



# COOPER

FLUID SYSTEMS



## WIGGINS SERVICE SYSTEMS



## In-Tank Receiver with Check Valve

The integrated check valve in the Wiggins ZN2CV is designed to prevent losing fuel from the receiver when the poppet is actuated and allowing nipple replacement without draining the tank. The check valve is specially designed to minimise pressure drop across the unit during high flow. ZN2CV is made of precision-machined components and the prototype unit has successfully passed 2,000-cycle tests without any failure.

### Features and Benefits Include:

- Allows easy non spill removal.
- Fuel anti theft device.
- Environmentally kind by reducing the spillage that occurs due to a damaged receiver.
- Designed and tested by Wiggins.
- Suits ZZ9A1 nozzle.
- Same pressure drop as ZNC2A.
- Replaceable nipple.
- Rebuild kit available.



**ZN2CV** In-Tank Receiver with Check Valve



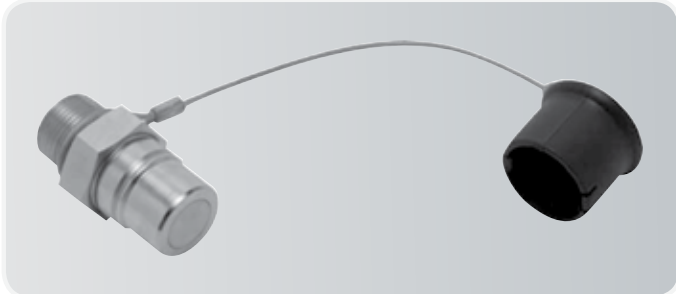
**KZN2CV-1** Installation Kit



**ZN2CV-100** Rebuild Kit

Service couplings allow you to change and fill crankcase oil, hydraulic reservoirs, top up transmission fluid & fill radiators. An extensive range of couplings is available to serve every fluid on your vehicle. Couplings can be mounted directly to equipment system, or at a remote location or central service box - reduces injuries by keeping workers off the machine.

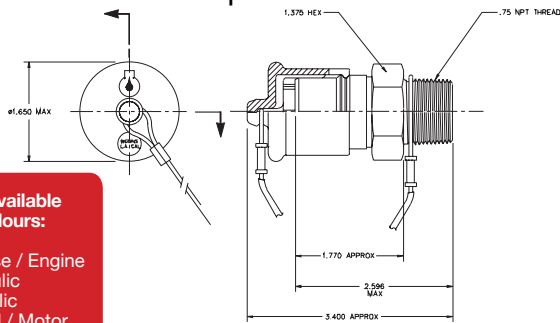
## Crankcase Receiver & Cap



**ON2 Receiver**

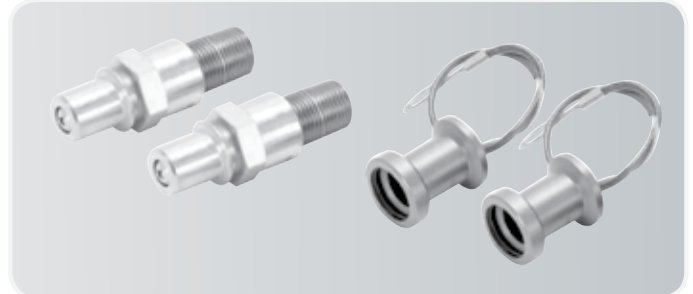
**OC-12CP Cap**

**ONC2A Receiver with Cap**



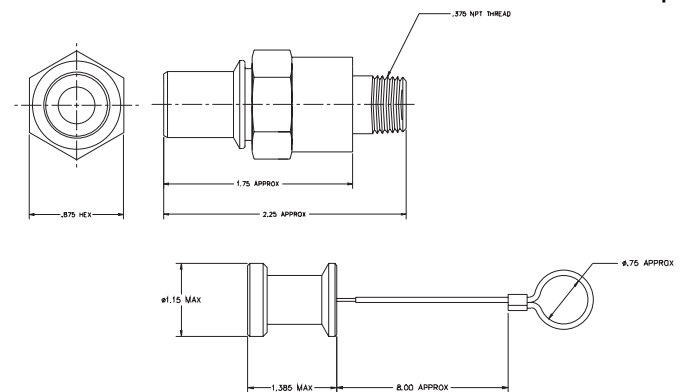
**ONC2A also available in six other colours:**  
 Blue: Coolant  
 Red: Crankcase / Engine  
 Yellow: Hydraulic  
 Green: Hydraulic  
 Orange: Wheel / Motor  
 Brown: Multi-Purpose Oil

## Transmission Receiver & Cap



**P1804 Receiver**

**P1880 Cap**



## Crankcase Nozzle & Plug

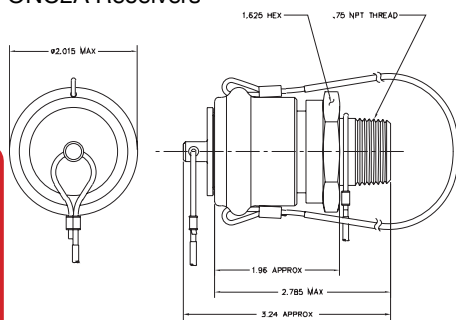


**OS2 Nozzle**

**OP12 Plug**

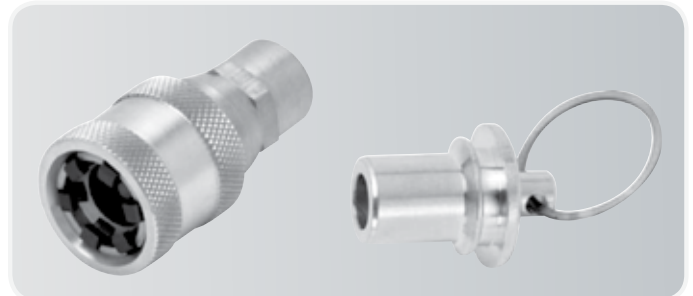
**OSP2 Nozzle with Plug**

\* mates with ON2 and ONC2A Receivers



**OSP2 also available in six other colours:**  
 Blue: Coolant  
 Red: Crankcase / Engine  
 Yellow: Hydraulic  
 Green: Hydraulic  
 Orange: Wheel / Motor  
 Brown: Multi-Purpose Oil

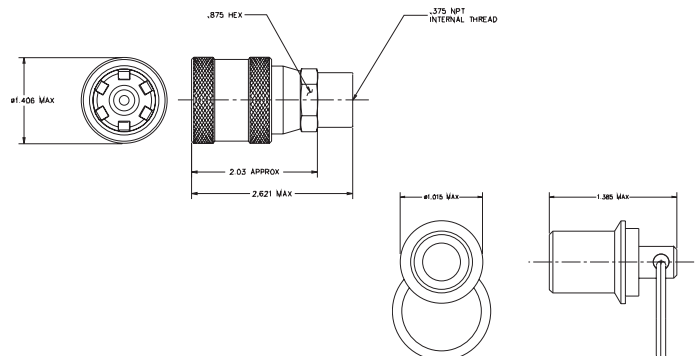
## Transmission Nozzle & Plug



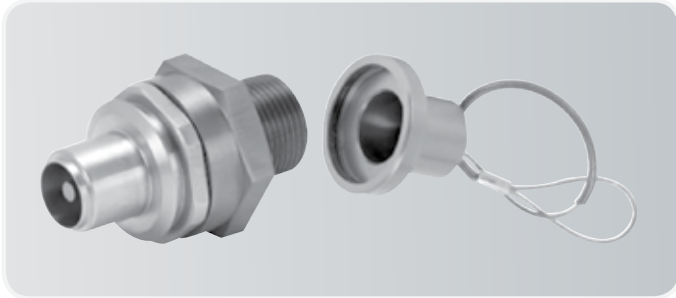
**C1807 Nozzle**

**P1844 Plug**

\* mates with P1804 Receiver

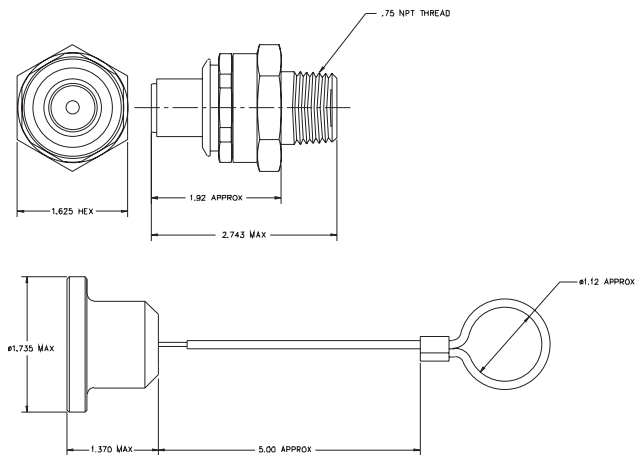


## Hydraulic Receiver & Cap

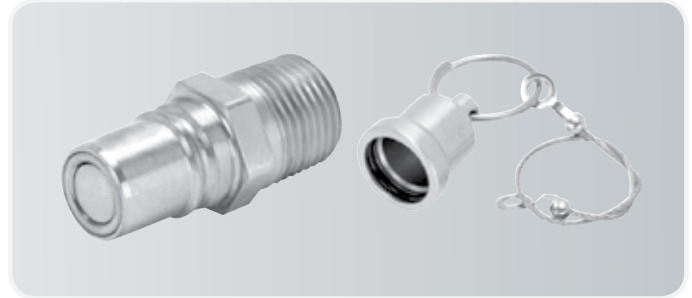


**6005A12 Receiver**

**6008-12 Cap**

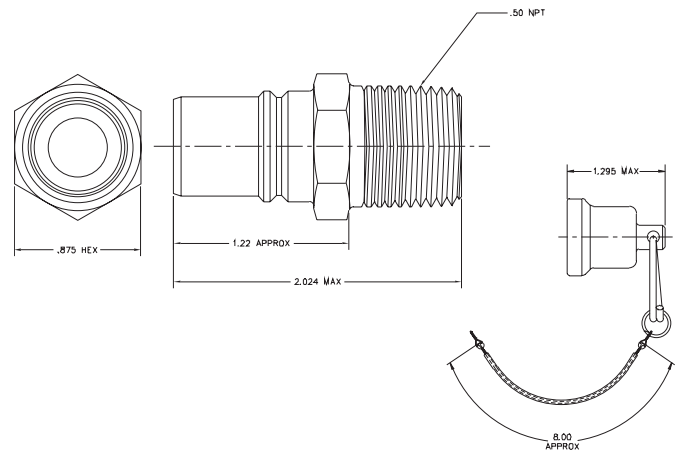


## Coolant Receiver & Cap

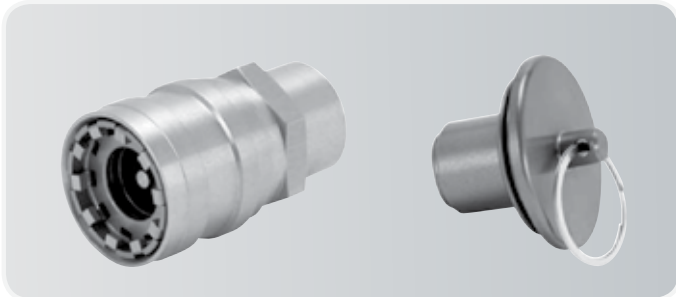


**EC285A8 Receiver**

**1208-8 Cap**



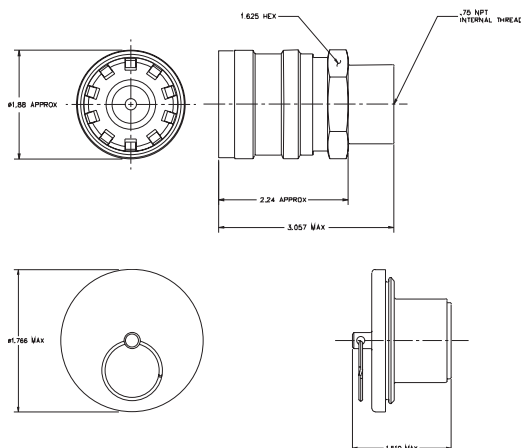
## Hydraulic Nozzle & Plug



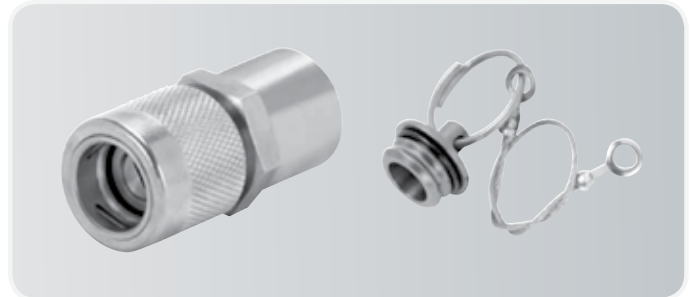
**6000B12 Nozzle**

\* mates with 6005A12 Receiver

**6009-12 Plug**



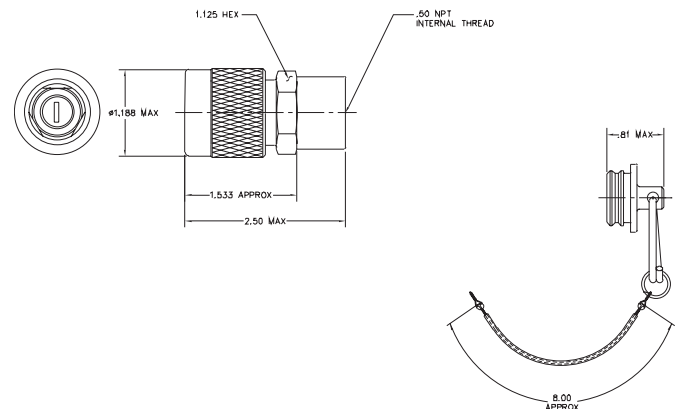
## Coolant Nozzle & Plug



**EC280B8 Nozzle**

\* mates with EC285A8 Receiver

**1209-8 Plug**

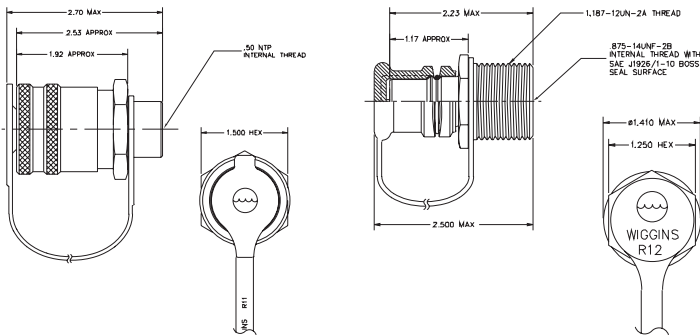


## R Series Coolant Receiver & Nozzle



**R11 Nozzle**                      **R11BLU Nozzle**  
**R12 Receiver**                **R12BLU Receiver**

- \* Nozzle and Receiver sold separately.
- \* Lanyard and Cap supplied with Receiver
- \* Replacement Lanyard: R1107
- \* Replacement Cap: R1205

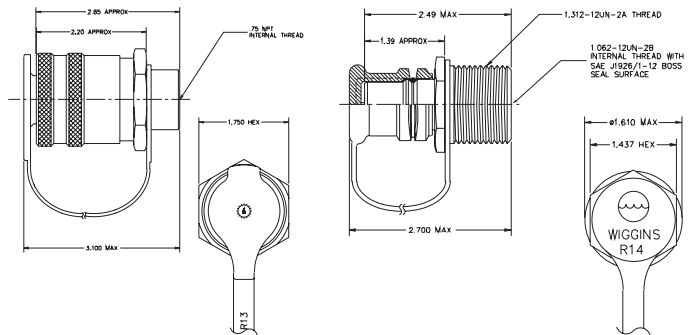


## R Series Transmission Receiver & Nozzle



**R13 Nozzle**                      **R13VLT Nozzle**  
**R14 Receiver**                **R14VLT Receiver**

- \* Nozzle and Receiver sold separately.
- \* Lanyard and Cap supplied with Receiver
- \* Replacement Lanyard: R1307
- \* Replacement Cap: R1405

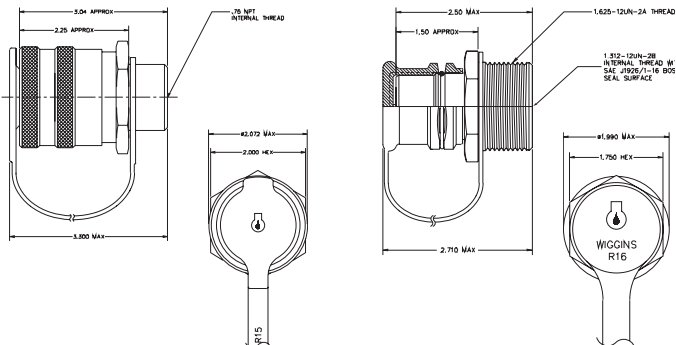


## R Series Oil Receiver & Nozzle



**R15 Nozzle**                      **R15RED Nozzle**  
**R16 Receiver**                **R16RED Receiver**

- \* Nozzle and Receiver sold separately.
- \* Lanyard and Cap supplied with Receiver
- \* Replacement Lanyard: R1507
- \* Replacement Cap: R1605

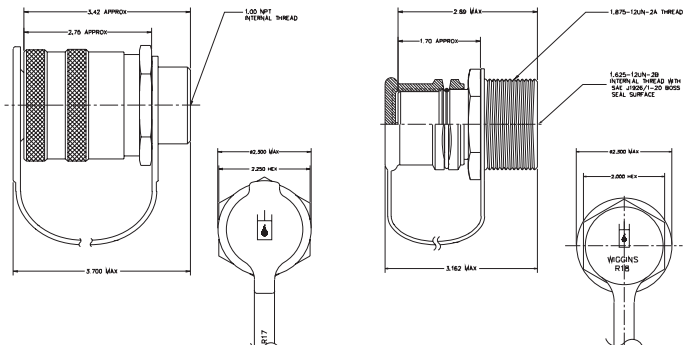


## R Series Hydraulic Receiver & Nozzle

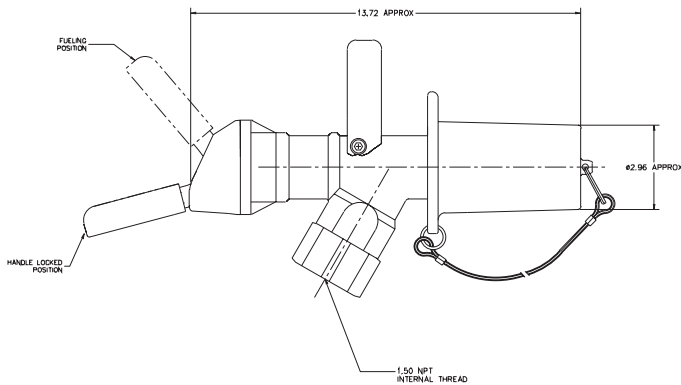


**R17 Nozzle**                      **R17YLW Nozzle**  
**R18 Receiver**                **R18YLW Receiver**

- \* Nozzle and Receiver sold separately.
- \* Lanyard and Cap supplied with Receiver
- \* Replacement Lanyard: R1707
- \* Replacement Cap: R1805



## ZZ9A1

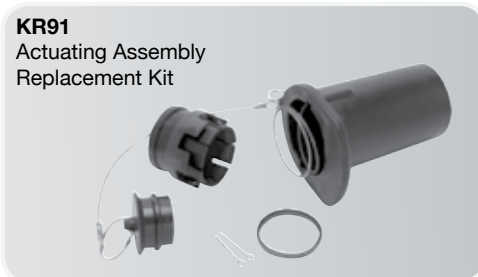


### Data Table

Flow Rate (gpm)	Pressure Drop	Operating Pressure	Weight (lbs)
25	1.0 psi	125 psig max.	5.75
60	4.0 psi	125 psig max.	5.75
100	9.0 psi	125 psig max.	5.75
125	14.0 psi	125 psig max.	5.75
150	24.0 psi	125 psig max.	5.75

### Replacement Kits

**KR91**  
Actuating Assembly  
Replacement Kit



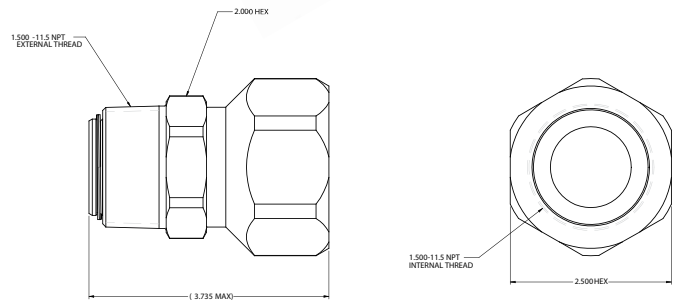
**KR92**  
Latching Mechanism  
Replacement Kit



**KR93**  
Housing Handle  
Replacement Kit

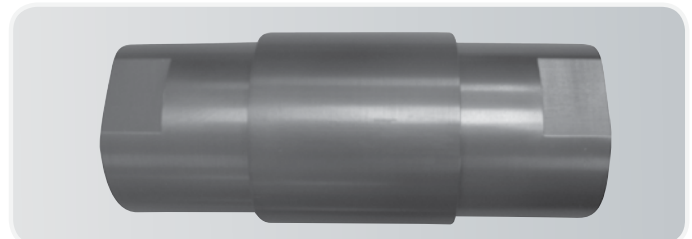


## ZS150



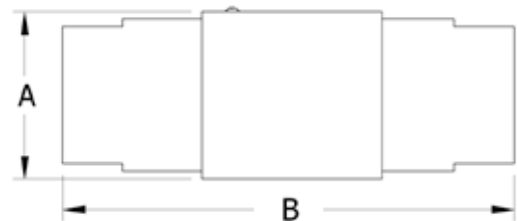
## ZC150

1.5" NPT M&F Swivel (suits ZZ9A1)



The Wiggins ZC150 Breakaway Coupling is designed to prevent damage to refuelling systems and minimise fuel spillage. In the event of a vehicle drive-away, the coupling halves will separate and the dual poppet valves will seal off both hoses.

The coupling uses two replaceable shear pins that break at a predetermined load. These pins may be purchased as part of a repair kit to allow speedy replacement in the field.



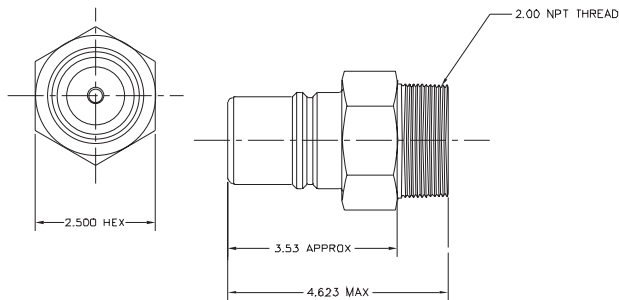
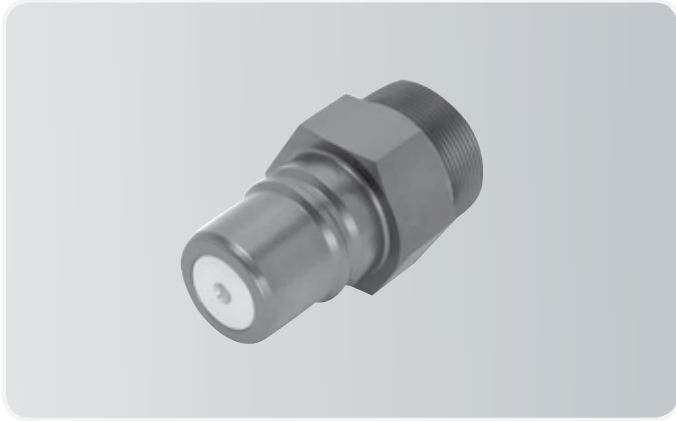
### Data Table

Description	A	B	Weight (lbs)	Operating Pressure
1-1/2" NPT	2.8"	7.5"	2.5	125psi

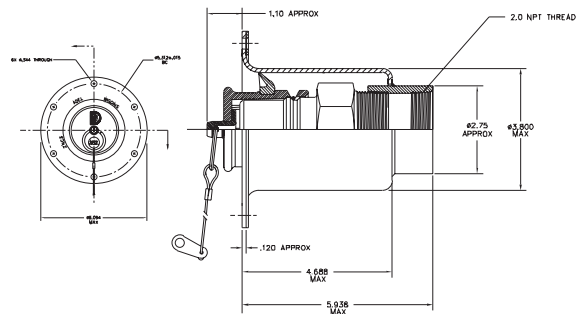
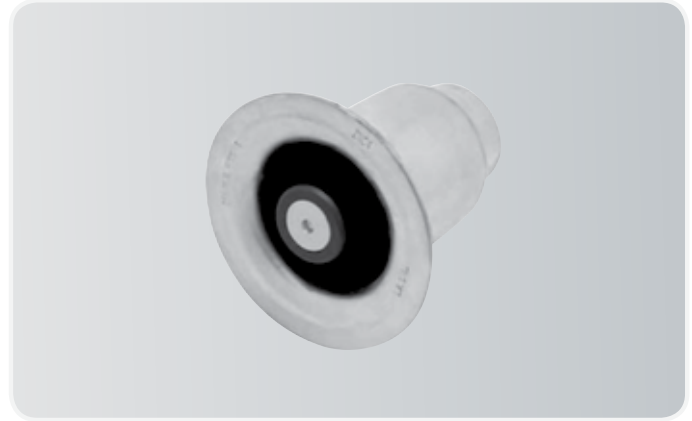
# WIGGINS FUEL RECEIVERS



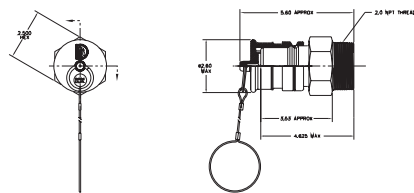
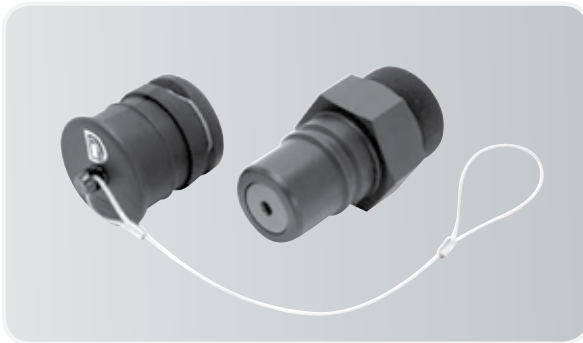
## ZN2A



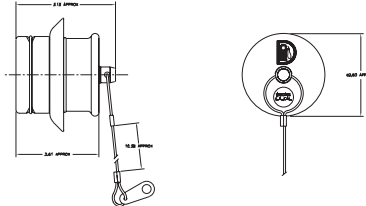
## ZNC4



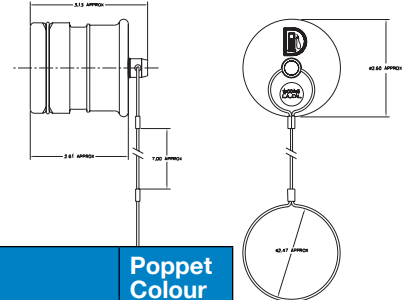
## JNC2A



## ZC-20BP



## ZC-20EP



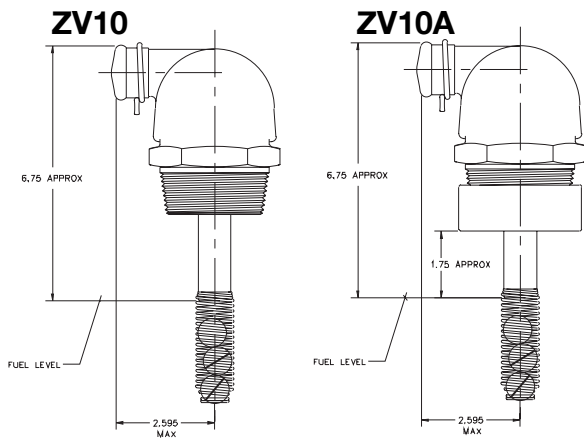
### Data Table

Receiver	Application	Poppet Colour
ZN2A	Standard for most applications and mountings	Clear
ZN2B	Light spring compensates for head pressure	Blue
ZN2D	Heavy spring to avoid premature shut-off	Red
ZN2AC	Stainless steel version of ZN2A	Clear
ZNC2A	Same as ZN2 with cap	Clear
ZNC3	Bolt on version	Clear
ZNC4	Weld on version	Clear
JNC2A	Remote receiver for JN125. The ONLY receiver to be used on remote-fill NON-PRESSURING systems	Black

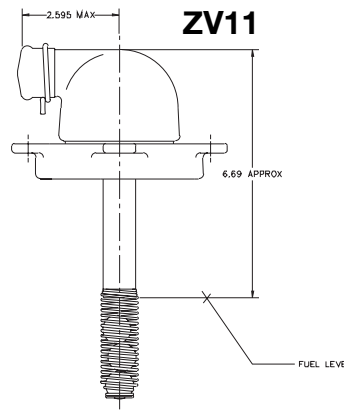
# WIGGINS FUEL TANK VENTS



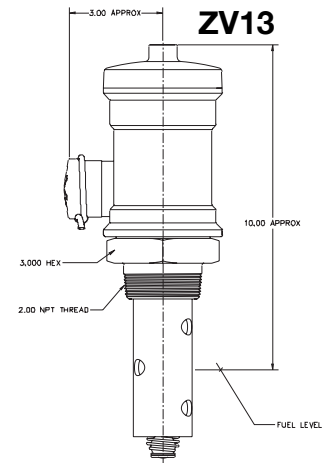
## ZV10



## ZV11



## ZV13

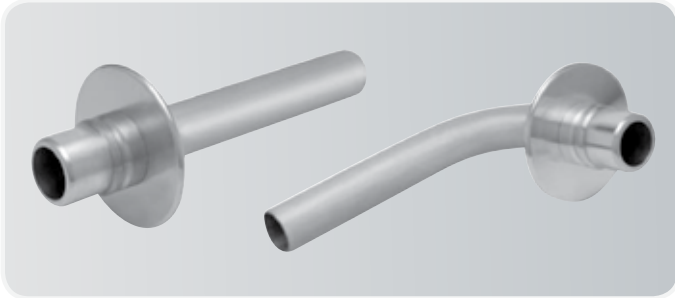


### Data Table

Vent Model	Mounting Style	Length	Pressure Relief	Rebuild Kit Number
ZV10	Pipe thread	9.375"	10.2 - 12.9 psi	K30285
ZV10A	Welded half coupling	9.375"	10.2 - 12.9 psi	K30285
ZV10B	Flange/Gasket	9.375"	10.2 - 12.9 psi	K30285
ZV10C	Same as ZV10 - with threaded outlet	9.500"	10.2 - 12.9 psi	K30285
ZV10F	Same as ZV10 - with long stem	12.50"	10.2 - 12.9 psi	K30285
ZV11	Gas cap mount	9.312"	10.2 - 12.9 psi	K30285
ZV11A	Gas cap mount - with long stem	12.50"	10.2 - 12.9 psi	K30285
ZV13	Vented pipe thread	12.50"	10.4 - 11.3 psi	N/A
ZV13F	Long stem	14.70"	10.4 - 11.3 psi	N/A



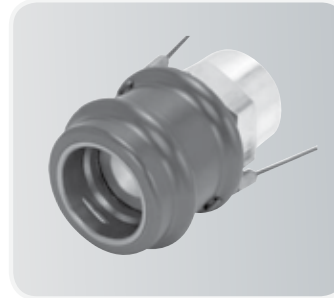
## Nozzle Adaptors for the ZZ9A1



**ZN6A**  
Straight Adaptor Tube

**ZN6B**  
90° Adaptor Tube

## Bulk Fuel Coupling



The ZS5 Bulk Transfer Nozzle can be used to drain a fuel tank for servicing, or to transfer fuel from one tank to another. The end fitting is the same 2" NPT female fitting as the ZZ9A1.

**ZS5 Nozzle**  
\* mates with ZN2A Receiver

# FLOW METERS

## WM50 Pulse Meters M50 Pulse & LC Display Meters



**M50ARP-X**



**Displays**

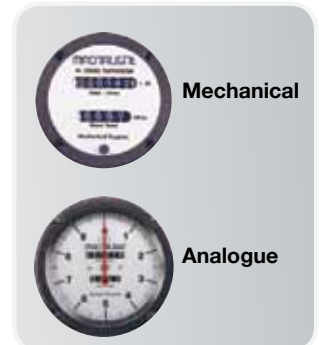
- 2" Large Capacity Flow Meter.
- Two independent pulse units.
- Flexibility of installation options (e.g. can be mounted horizontally or vertically; no flow conditioning required).
- Low pressure drop allows for economical pump selection or gravity flow applications.
- Meter construction enables fast and easy on-site servicing without removal from application; minimises the number of wearable and replaceable parts; extends product life.
- Intrinsically safe LC Deluxe and Standard Displays.



## M50 Mechanical Meters



**M50ARM-X**



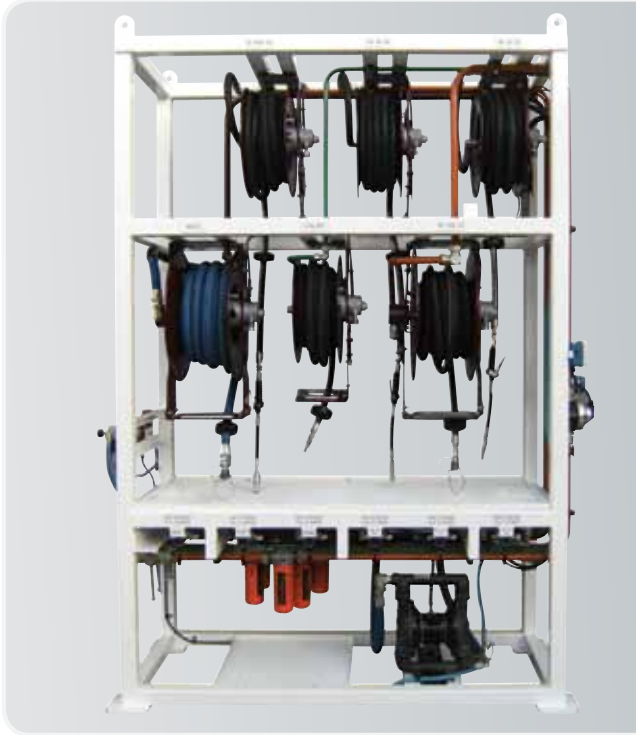
**Displays**

- 2" Large Capacity Flow Meter.
- Easy to read and operate mechanical display.
- Flexibility of installation options (e.g. can be mounted horizontally or vertically; no flow conditioning required).
- Low pressure drop allows for economical pump selection or gravity flow applications.
- Meter construction enables fast and easy on-site servicing without removal from application.
- An Option of 100 Pulses per unit of measure output is available for the Analogue version.



# HOSE REELS

## Hydraulic & Pneumatic Hose Reels



Hose Reel Stand



### Hydraulic Hose Reels & Pneumatic Hose Reels

- Safe to operate and maintain.
- Direct drive.
- Less moving parts with no power springs.
- No pawl.
- Stainless Steel hose guide with greater hose carrying capacity.
- High flow with low pressure drop.
- Optional brake assembly available. (Pneumatic only)



## 700 Series Hose Reel



Dual-arm design handles up to 74' (22.86m) of 3/4" (19mm) hose. Equipped with heavy-duty ball bearings for longer life than sleeved-type bearings.



## 750 Series Hose Reel



Heavy-duty, high volume reel handles up to 50' (15.2m) of 1-1/2" (38mm) hose that is ideal for fuel dispense. Maintains desired length of hose and ensures positive latch and rewind.



# SPILL CONTAINMENT & NOZZLES

## A1004

### Spill Containment Kit



- Sturdy ductile iron lid and heavy duty, snow plow resistant ductile iron rim.
- HDPE bellows liner.
- Deep polyethylene gravel guard accommodates thick concrete pads.
- One piece base with integral drain.
- 4" NPT or BSPT.

**EMCO**<sup>®</sup>  
WHEATON RETAIL

## A6000

### Roughneck<sup>®</sup> Truck Stop Nozzle



#### A6000-020 1" Nozzle

- Full-flow automatic nozzle.
- Rugged unibody construction, thick walled spout and stamped steel lever are built for durability, long lasting reliability, and maximum flow rates.
- Features a hold-open latch and vinyl scuff guard.
- 225L/min @ 40 PSI max.

**EMCO**<sup>®</sup>  
WHEATON RETAIL

# PUMPS

## Fire-Ball<sup>®</sup> 425



With robust design, the Fire-Ball is the pump of choice for your most demanding high volume applications.

Available in ratios of 3:1, 6:1, 10:1, 50:1 and 75:1

**GRACO**<sup>®</sup>

## Diaphragm Pumps



Ideal for a variety of applications from diesel, oil transfer and used oil, to windshield wash and anti-freeze.

Available in a range of sizes from 3/8" (9.5mm) to 3" (76.2mm).

**GRACO**<sup>®</sup>

**PERTH OFFICE**

PO Box 231, Cloverdale WA 6985  
25 Redcliffe Road, Redcliffe WA 6104  
Telephone (08) 6272 5333  
Facsimile (08) 6272 5350  
Email [cfsperth@cfs.cgl.com.au](mailto:cfsperth@cfs.cgl.com.au)

**KALGOORLIE OFFICE**

Unit 2, 35 Great Eastern Hwy, Kalgoorlie WA 6430  
Telephone (08) 9021 4000  
Facsimile (08) 9021 3999  
Email [cfskalgoorlie@cfs.cgl.com.au](mailto:cfskalgoorlie@cfs.cgl.com.au)

**ADELAIDE OFFICE**

19 Richard Street, Hindmarsh SA 5007  
Telephone (08) 8346 2705  
Facsimile (08) 8346 7443  
Email [cfsadelaide@cfs.cgl.com.au](mailto:cfsadelaide@cfs.cgl.com.au)

**BRISBANE OFFICE**

PO Box 257, Carole Park QLD 4300  
152 Cobalt Street, Carole Park QLD 4300  
Telephone (07) 3258 7222  
Facsimile (07) 3258 7200  
Email [cfsbrisbane@cfs.cgl.com.au](mailto:cfsbrisbane@cfs.cgl.com.au)

**TOOWOOMBA OFFICE**

Lot 13 Tews Court, Toowoomba QLD 4350  
Mobile 0417 930 591

**MACKAY OFFICE**

PO Box 691, Mackay QLD 4740  
8 Michelmore Street, Paget QLD 4740  
Telephone (07) 4952 4844  
Facsimile (07) 4952 4011  
Email [cfsmackay@cfs.cgl.com.au](mailto:cfsmackay@cfs.cgl.com.au)

**GLADSTONE OFFICE**

Unit 7A 2 Dennis Street, Boyne Island  
Mobile Workshop 0400 203 400  
Mobile Sales 0410 220 919

**TOWNSVILLE OFFICE**

PO Box 8020 GBC, Garbutt QLD 4814  
38 Toll Street, Bohle QLD 4818  
Telephone (07) 4774 3455  
Facsimile (07) 4774 4902  
Email [cfstownsville@cfs.cgl.com.au](mailto:cfstownsville@cfs.cgl.com.au)

[www.cooperfluidsystems.com.au](http://www.cooperfluidsystems.com.au)

**AUSTRALIA'S HYDRAULIC AND LUBRICATION SPECIALISTS**

A Division of Coventry Group Ltd ABN 37 008 670 102



**COOPER**  
FLUID SYSTEMS

**Ph 1300 026 673**  
for your nearest location