



**Wilcom e3**

**TrueSizer Web Beta 0.5**

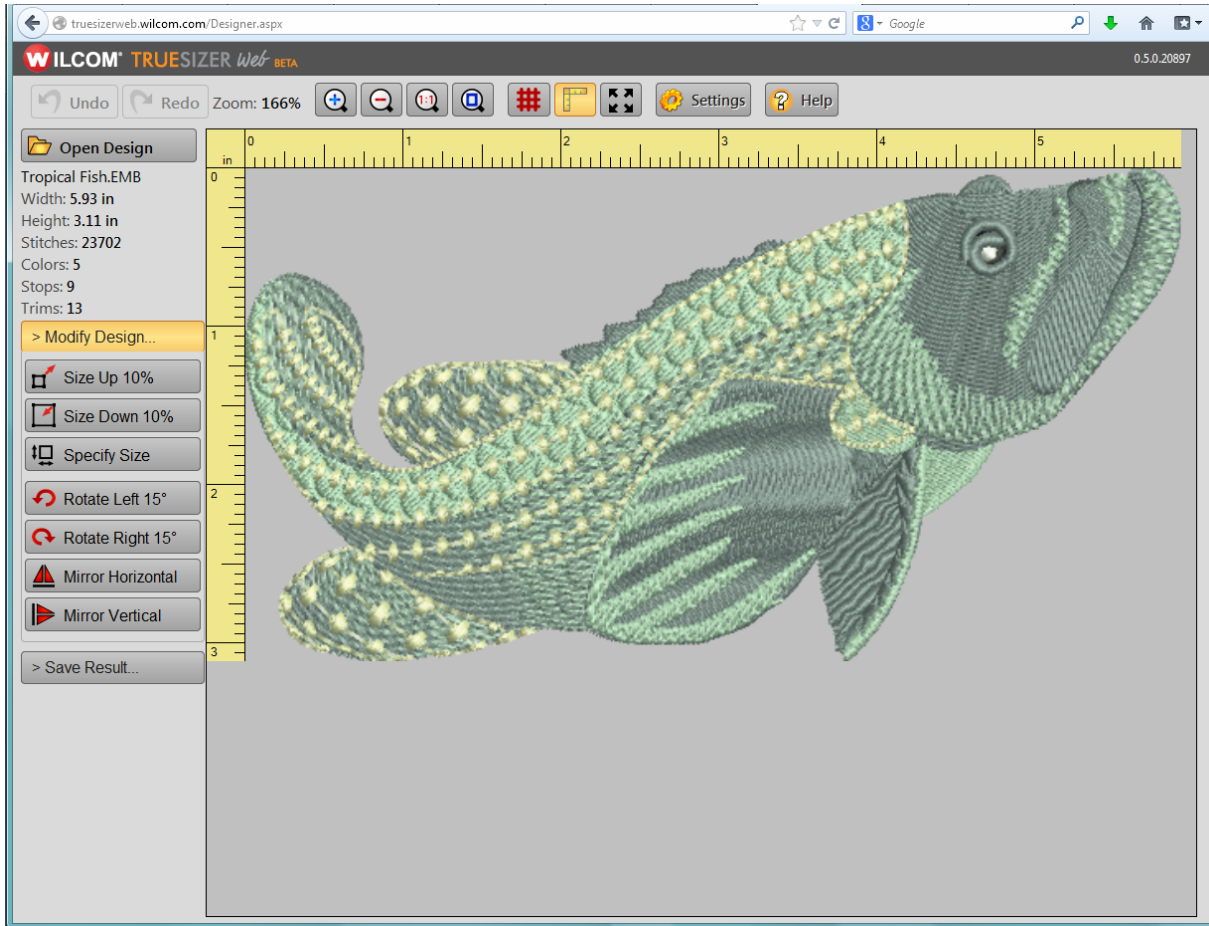
**Release Notes**

# Contents

Wilcom e3 TrueSizer Web Beta 0.5 .....	3
Public beta release .....	4
Reporting feedback.....	4
Accessing TrueSizer Web .....	5
Access TrueSizer via the Wilcom Website .....	5
Log in to gain access to the TrueSizer Web app.....	6
Sign up for a wilcom.com account if you don't have one .....	7
Bookmark the TrueSizer Web app URL for quick access .....	8
Explore TrueSizer Web using the demo design.....	9
Embroidery designs on your computer or SkyDrive.....	10
Microsoft SkyDrive cloud storage .....	10
Synchronizing desktop and mobile devices via SkyDrive .....	11
TrueSizer Web open and save on mobile devices .....	12
Save and convert embroidery designs.....	12
Print design production worksheets.....	13
The EMB advantage.....	13
Supported browsers .....	14
Known browser limitations .....	14
Mobile device restrictions .....	15
File management restrictions.....	15
Viewing designs on mobile devices.....	15
Keyboard restrictions .....	15
Mobile device browsers .....	15
Supported file formats .....	15
Copyright .....	17
Contact .....	17

## Wilcom e3 TrueSizer Web Beta 0.5

Wilcom TrueSizer Web is a free online web application to view, re-size and convert embroidery designs in Wilcom's EMB and other formats using only a web browser and internet connection. It is a companion product to Wilcom's more extensive, downloadable e3 TrueSizer desktop software, also free to the public.



Use TrueSizer Web Beta with a web browser and internet connection to:

- Open embroidery designs in Wilcom EMB and other formats, including the latest version e3 EMB
- View designs in TrueView realistic simulation at accurate real size, or zoomed in or out.
- View multi-decoration EMB designs containing print, embroidery, bling, and sequin components.
- Re-size digitized designs in Wilcom EMB, Bernina ART, and Janome JAN formats, preserving all original stitching effects and densities.
- Re-size, rotate, and mirror image designs.
- Save digitized designs in .EMB format versions e3, e2, e1.8, e1.5, and V2006.
- Convert designs into various stitch file formats for production.
- Print simple design worksheets with key design information and thread color sequence.
- Store and share designs in the cloud via your free Microsoft SkyDrive cloud storage account.

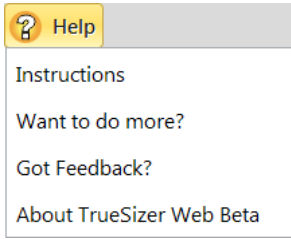
TrueSizer Web works with popular web browsers on many different operating systems, including Windows PCs, Macs, desktop computers, notebooks, laptops, and mobile tablets such as Apple iPad and many Android tablets.

## Public beta release

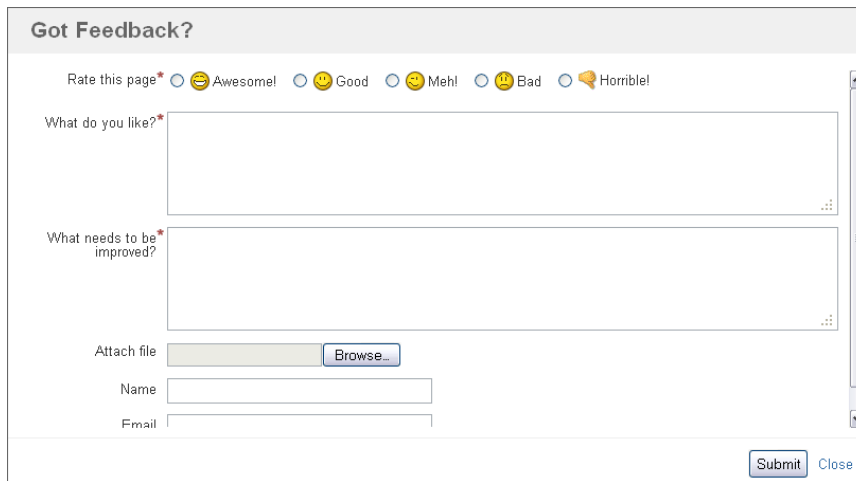
TrueSizer Web Beta version 0.5 is released as a public beta version. It has all the features we intend at this stage for version 1, but we'd like to get your feedback on this. There may also be some bugs we haven't found yet.

## Reporting feedback

We'd like to receive feedback from public users to help us improve TrueSizer Web. Give your input directly from inside the web application via **Help > Got Feedback?** We will update TrueSizer Web based on the feedback we get from users.



TrueSizer Web provides a built-in mechanism to provide page-by-page feedback. Use it to report improvement suggestions or bugs when using the system. Attach screen dumps or embroidery files to your report as necessary.

A screenshot of the 'Got Feedback?' form. The form has a title bar 'Got Feedback?'. Below the title bar, there is a rating section with the text 'Rate this page\*' and five radio buttons with corresponding smiley faces: 'Awesome!', 'Good', 'Meh!', 'Bad', and 'Horrible!'. Below the rating section, there are two text input fields: 'What do you like?\*' and 'What needs to be improved?'. Below the text input fields, there is an 'Attach file' section with a 'Browse...' button. Below the 'Attach file' section, there are two text input fields: 'Name' and 'Email'. At the bottom right of the form, there are two buttons: 'Submit' and 'Close'.

# Accessing TrueSizer Web

## Access TrueSizer via the Wilcom Website

TrueSizer Web is available via the Wilcom website at [www.wilcom.com/TrueSizer/](http://www.wilcom.com/TrueSizer/).

**WILCOM®** Get FREE TrueSizer Partner Login

Home Products Solutions Get Help About Contact

## TrueSizer e3 Page

Desktop vs Web

Products > Wilcom TrueSizer Download > TrueSizer

### TrueSizer Web *beta*

**Free embroidery web app**

Now you can access embroidery files on the go! Use your PC, Mac, iPad or Android device to view, resize and convert embroidery files. Take advantage of Wilcom's unique all-in-one .EMB format.

[Get TrueSizer Web](#)

Already have a Wilcom.com account? [Login](#)

[Web vs Desktop | Compare](#)

### TrueSizer Desktop

**Free embroidery conversion software**

View, modify, read and convert all major embroidery file types with full design scalability. Based on the same core software as Wilcom's acclaimed professional embroidery design software, TrueSizer provides the unique advantages of the 'all-in-one' .EMB file format.

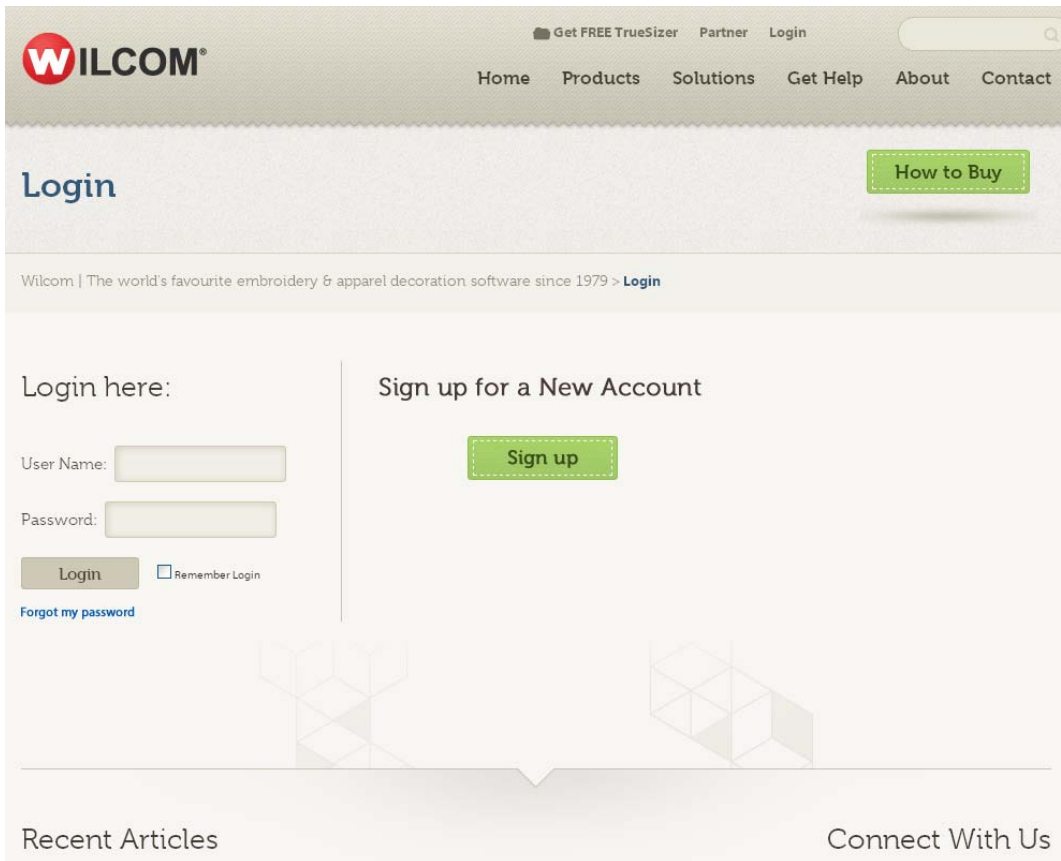
[Get TrueSizer Desktop](#)

Already have a Wilcom.com account? [Login](#)

[Web vs Desktop | Compare](#)

Click the **Get TrueSizer Web** button at the bottom of the screen.

## Log in to gain access to the TrueSizer Web app



The screenshot shows the Wilcom website's login page. At the top left is the Wilcom logo. The top navigation bar includes links for 'Home', 'Products', 'Solutions', 'Get Help', 'About', and 'Contact'. A search bar is located in the top right. Below the navigation bar, the word 'Login' is displayed in a large font. To the right of 'Login' is a green button labeled 'How to Buy'. Below this, a breadcrumb trail reads 'Wilcom | The world's favourite embroidery & apparel decoration software since 1979 > Login'. The main content area is split into two columns. The left column is titled 'Login here:' and contains a 'User Name:' input field, a 'Password:' input field, a 'Login' button, a 'Remember Login' checkbox, and a 'Forgot my password' link. The right column is titled 'Sign up for a New Account' and contains a green 'Sign up' button. At the bottom of the page, there are sections for 'Recent Articles' and 'Connect With Us'.

If you have a Wilcom.com account, log in at <http://www.wilcom.com/home/Login.aspx>

If not, click **Sign Up** to create an account.

## Sign up for a wilcom.com account if you don't have one

WILCOM®

Get FREE TrueSizer Partner Login

Home Products Solutions Get Help About Contact

### Sign Up

How to Buy

Wilcom | The world's favourite embroidery & apparel decoration software since 1979 > Sign Up for Wilcom.com

Create a Wilcom.com account to gain access to TrueSizer, support, partner resources and more.

\* User name:

\* Password:

\* Confirm Password:

We suggest a strong password - at least 7 characters, a combination of upper and lower case, numbers and characters.

\* First Name:

\* Last Name:

\* Email address:

Please use a valid email you have access to this will be used to verify your account.

\* Company name:

Job Title:

\* Country:

\* State/Province/County:

Telephone:  Area code:  Phone number:

\* What is your primary industry:

\* What is your secondary industry:

How many employees do you have:

I would like to get FREE TrueSizer product.

I would like to get Wilcom Support.

Yes I would like to receive Wilcom newsletters.

At Wilcom we respect your privacy. We will not give your personal information to third parties without your permission. By providing your information, you acknowledge that you have read and agree to our [Privacy Statement](#).

Submit

If you don't already have a Wilcom.com login, sign up to get one at <http://www.wilcom.com/Home/Signup.aspx>.  
Fill in your details, including access to TrueSizer Web.

I would not like to get FREE TrueSizer product. ✖

Please help us improve TrueSizer and our other services by completing these questions:

I want TrueSizer Desktop version

I want access to TrueSizer Web App

\* I've used TrueSizer previously:

Yes  No

\* What is the primary reason you need TrueSizer?

Please select

\* What other embroidery software do you use?

Please select

\* What embroidery machine do you use?

Please select

---

I would like to get Wilcom Support. +

Yes I would like to receive Wilcom newsletter.

At Wilcom we respect your privacy. We will not give your personal information to third parties without your permission. By providing your information, you acknowledge that you have read and agree to our [Privacy Statement](#).

- Click the **Submit** button.
- You will be sent a confirmation email.
- Open your confirmation email and click the link provided to confirm your signup.
- Log in with your new user name and password.

### Bookmark the TrueSizer Web app URL for quick access

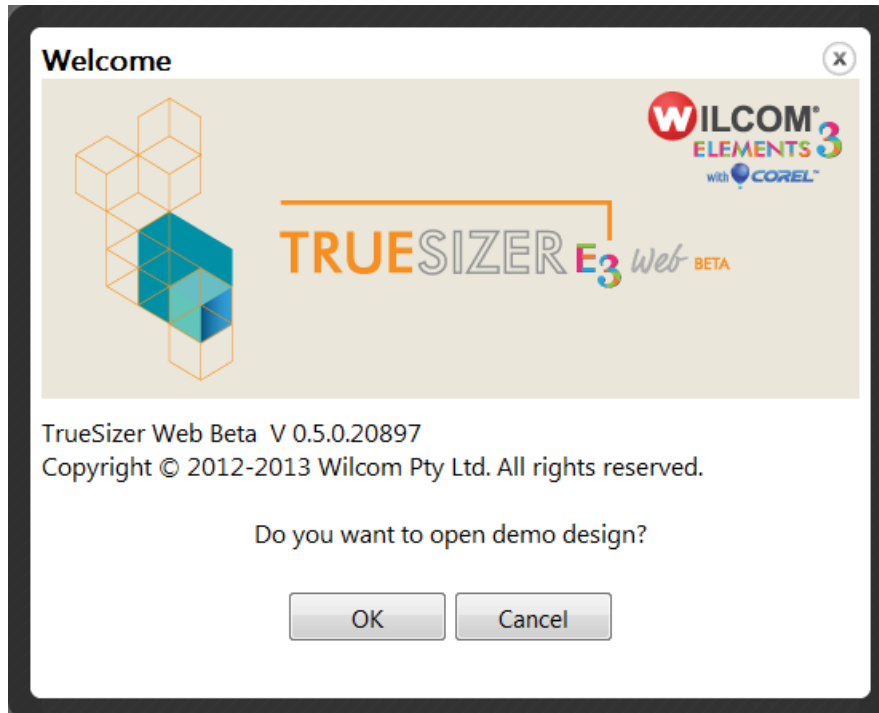
For quick access, bookmark the web app's direct URL

- Go directly to the TrueSizer Web application at <http://truesizer.wilcom.com/>.
- You will be prompted to log in if not already.



## Explore TrueSizer Web using the demo design

Familiarize yourself with TrueSizer Web operations using the demo design.

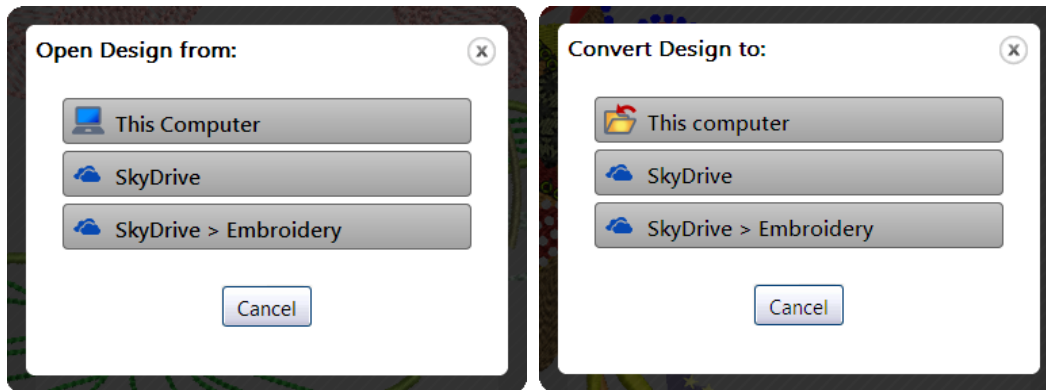


- Click **OK** when prompted to open the demo design from the **Welcome** page.
- Zoom in on the design to inspect it in TrueView.
- Note the size of the design on the ruler, and in the list of design info at the left of the screen.
- Choose to display measurements and rulers in inches or millimeters using the **Settings** droplist.
- Calibrate your screen if you want to see exact real size on your display.
- Click **Modify Design** to see a list of buttons to resize the design, rotate and mirror it.
- Click **Save Results** to see a list of buttons to **Print**, **Save** (as EMB), and **Convert** the design.
- To reload the demo design to start again, simply click on your web browser's **Refresh** button.

**Note:** When saving or converting designs to local PC, they will generally save to the default 'Download' folder. Access your browser settings to specify a different download folder or prompt you to specify one when saving.

## Embroidery designs on your computer or SkyDrive

Open and save embroidery designs to and from your local computer and free Microsoft SkyDrive. Some mobile platforms only allow use of embroidery designs via SkyDrive, not the local device storage.



Choose where to open or save the design:

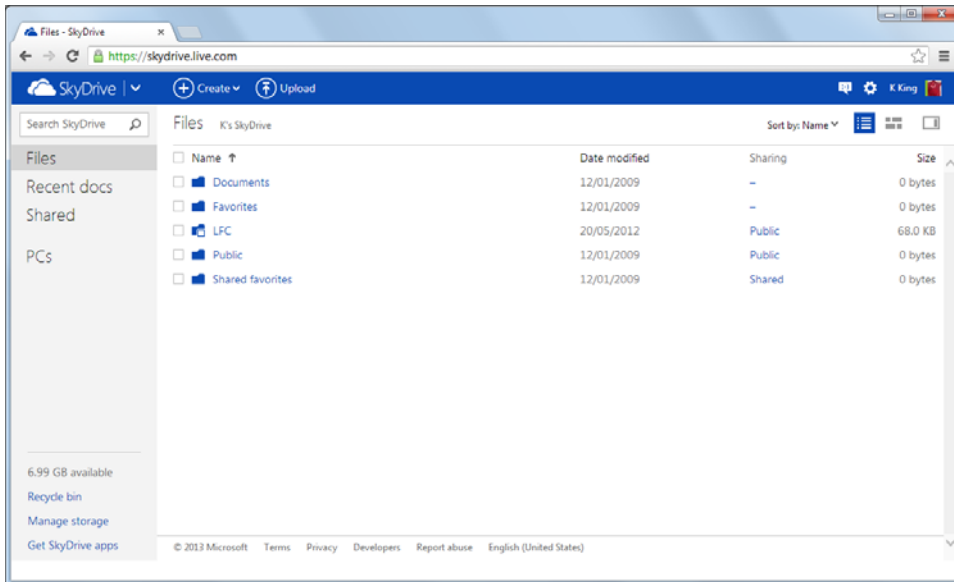
- This computer: the one you are using at the time
- SkyDrive: your Microsoft® SkyDrive cloud storage folders.
- SkyDrive > Embroidery: predefined 'Embroidery' folder on your Microsoft® SkyDrive.

### Microsoft SkyDrive cloud storage

SkyDrive is great because it:

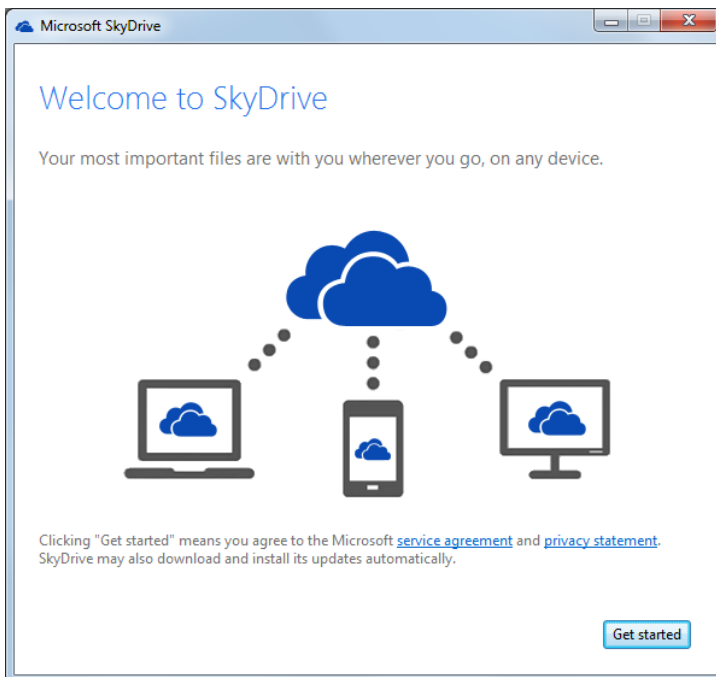
- offers 7Gb of free storage,
- integrates well with Windows file management,
- can automatically synchronize designs on all your computers and mobile devices, and
- lets you share designs with other people.

Sign up with a Microsoft® account at [www.skydrive.com](http://www.skydrive.com) and follow the instructions to get your free Skydrive storage in the cloud.



## Synchronizing desktop and mobile devices via SkyDrive

It is not essential for TrueSizer Web use, but it is handy to also install Microsofts Skydrive app for your mobile device – iPad from the Apple App Store, or Android from Google Play.



To keep all your designs synchronized between your various devices, you can also download and install the 'SkyDrive apps for your computer and your mobile devices if you wish.

### Download Microsoft SkyDrive App for your Windows or Mac Computer

- <http://windows.microsoft.com/en-us/skydrive/download>

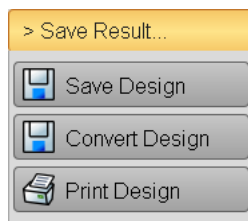
## Download the Microsoft SkyDrive App for your mobile tablet and phone

- From the Apple app Store for iPad and iPhone
- From Google Play for Android devices

## TrueSizer Web open and save on mobile devices

Mobile devices often restrict what types of files are allowed to be opened from a browser, or saved to the device. TrueSizer Web will only show the open and save locations available for your device. See also [Mobile device restrictions](#).

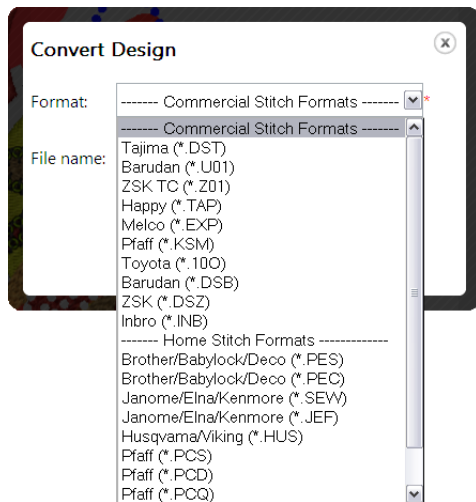
## Save and convert embroidery designs



TrueSizer Web provides commands to save, convert and print designs. Designs can be saved to Wilcom EMB format. This option allows you to backdate designs so that they can be opened in earlier versions of Wilcom EmbroideryStudio and compatible software.

Designs opened in EMB, ART, and JAN file format can be saved to EMB format, or converted to stitch formats.

Designs opened in a stitch file format cannot be saved to EMB format, but can be saved or converted to other stitch formats.

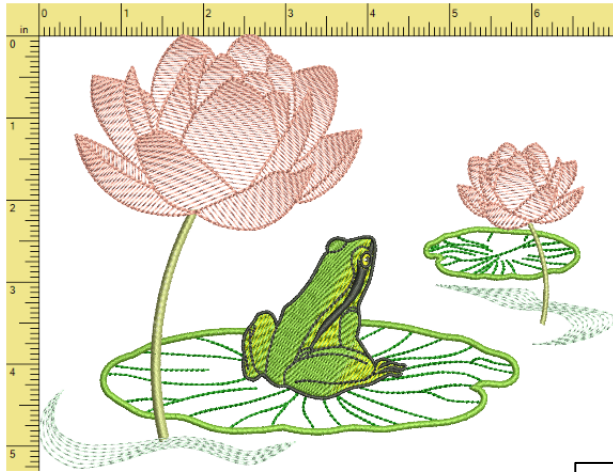


The **Convert Design** function saves designs to any of the supported stitch file formats. Stitch files are low-level formats for direct use by embroidery machines. EMB design files can be converted to any production file format. Production (stitch) files can also be interconverted. See also [Supported file formats](#).

**Note:** When saving or converting designs to local PC, they will generally save to the default 'Download' folder. Access your browser settings to specify a different download folder or prompt you to specify one when saving.

## Print design production worksheets

TrueSizer Web also lets you print simple production worksheets.



Design: Frog Color  
Blend.EMB  
Width: 7.00 in  
Height: 5.29 in  
Stitches: 17860  
Colors: 8

#	Color	Description	Brand Code
1	Deep Green	Royal	C750
2	Med Olive Green	Royal	C525
3	Tan	Royal	C788
4	Pale Green	Royal	C151
5	Tan	Royal	C788
6	Orange Gold	Royal	C439
7	Med Olive Green	Royal	C525
8	Night Sky	Royal	C794
9	Light Beige	Royal	C003
10	Night Sky	Royal	C794
11	Rose Pink	Royal	C223

Design file contains thread chart and thread code information

When you print an object design like EMB file, the color sequence table shows the brand and code of thread used for each color change.

## The EMB advantage

The EMB 'all-in-one' multi-decoration file format provides a number distinct advantages ...

### Scale EMB designs

Native EMB designs can be easily resized, maintaining all special effects and fills that the digitizer put in the original. Stitches are recalculated from the original outlines – for guaranteed results.

### Email EMB files direct

Send designs to your customer or partner embroidery company in the original EMB format. EMB format can be sent quickly by email and nothing else is required. Everything is saved in the one file – stitches, colors, production instructions, design outlines.

### Print out production worksheets

EMB files contain all details necessary to create detailed production worksheets. All color sequence information is saved in the EMB file.

## **Read and convert many popular file formats**

EMB files can be readily converted to other formats so you don't have to switch back and forth between different programs.

## **Guarantee quality of the final stitchout**

Because EMB format combines original outlines (condensed data) with the full original stitch data, customers will receive designs exactly as they were created – complete with any fine-tuning stitch edits that may be included. They can still resize the design from the original outlines with guaranteed rescaling. No confusion switching between multiple expanded and condensed files.

## **Supported browsers**

TrueSizer Web was developed under Chrome so you will gain the most reliable experience using this browser. However, TrueSizer Web will work with any Java-script-enabled browser. Note that there will always be some browser-specific issues. Tested browsers include:

- IE
- Firefox
- Opera
- Chrome
- Safari for Windows
- Safari for iOS
- Android native browser

## **Known browser limitations**

Known issues associated with some of these browsers include:

- Options for opening and saving designs using 'this computer' don't appear under iOS.
- Options for opening and saving designs using SkyDrive don't appear under Android and iOS.
- When converting to home formats, a window remains open when using IE8, IE9 , IE10. This problem also affects saving EMB formats and converting to some commercial formats.
- The 'Calibrate Screen' function only supports screens with resolutions between 48 and 480 DPI. If the screen DPI is beyond this range, TrueSizer Web cannot render the resultant image in actual size.
- The 'Full Screen' button does not work in IE – it is disabled. This problem does not affect Chrome.
- When performing certain actions while the Printout window is open in Chrome, TrueSizer Web becomes unstable. Also, Chrome (erroneously) allows multiple Printout windows to open. The problem does not occur in IE.

## Mobile device restrictions

TrueSizer Web is designed to work primarily with desktop computers. While it does work with mobile devices, default browsers on mobile devices may have restricted functionality. This may vary with the device and particular browser.

### File management restrictions

Most mobile devices won't allow you to upload or download embroidery files via browser apart from OS-compliant files such as recognized image files. Some devices will allow downloads through third-party filing software such as iFile. Some mobile devices have built-in file management software provided by the Android OS. Some devices can interface with USB devices which means that you can copy files to and from your mobile device.

### Viewing designs on mobile devices

Full screen mode may not work in some browsers. Sometimes you have to scroll to see everything on screen. There may be issues with calibrating screens on mobile devices. Viewing in actual size is not guaranteed. Scaling when revolving the screen on mobile devices is also not accurate.

### Keyboard restrictions

There may be restrictions entering information into fields and forms in TrueSizer Web when using the mobile device touchscreen keyboard. It is sometimes easier to rotate the screen to portrait mode to allow more keyboard space.

### Mobile device browsers

Default browsers on mobile devices generally have restricted functionality. If you experience restrictions, you may try substituting an alternative browser if available. Some, such as 'Dolphin', are designed specifically for use with mobile devices on both Android and iOS platforms.

## Supported file formats

TrueSizer Web supports both native Wilcom EMB file formats and third-party stitch file formats.

### Embroidery file types

Embroidery files fall into two broad categories: outline or 'design' files, and stitch or 'production' files:

Type	Description
Object file	Object files are high-level digitizing system CAD formats which contain object outlines, object properties and in Wilcom's case, also stitch data. When you open an original digitized design file in TrueSizer Web, it can be accurately resized while preserving the original stitching effects and correct densities.
Stitch file	Stitch or 'expanded' designs are low-level formats for direct use by embroidery machines. They contain only stitch coordinates and machine functions. Stitch files are generally not suited to resizing. Because the stitch count does not change, the density increases or decreases with the design size. Thus you should scale stitch designs by no more than $\pm 5-10\%$ because the densities scale by the same amount.

### Object file formats

Apart from native EMB file format, TrueSizer Web also supports the following outline (design) file formats.

Format	Brand	Description	Read	Write
EMB	Wilcom	All versions of EMB file from V2006 up to version e3	●	●
EMB	Wilcom	All versions of EMB file from the beginning up to version 9	●	
ART	BERNINA	All versions Artista design files from V1 to V6	●	
JAN	JANOME	All versions of JANOME Digitizer design files to V4	●	

### Commercial stitch file formats

TrueSizer Web 0.5 supports the following commercial stitch (production) file formats.

Format	Brand	Description	Read	Write
100	Toyota	Stitch file format native to Toyota machines	●	●
BRO	Bits & Volts	Contains information about stitch arrays	●	
DSB	Tajima	Like DST but with binary data as used on Barudan machines	●	●
DST	Tajima	Stitch file format native to Tajima machines, with ternary stitch data	●	●
DSZ	Tajima	Like DST but with binary data as used on Zangs/ZSK machines	●	●
EMX	Wilcom	Cross stitch data file	●	
EXP	Melco	Stitch or 'expanded' file format native to Melco machines	●	●
INB	Inbro	Inbro machines native stitch file	●	●
KSM	Pfaff	Pfaff stitch file format	●	●
PCH	Gunold APS	Contains information about stitch arrays	●	
STC	Gunold	Contains operative information	●	
STX	Datastitch	Contains information about stitch arrays	●	
TAP	Happy	Happy Machines native stitch file	●	●
U01	Barudan	Stitch file format native to Barudan machines	●	●
Z01	ZSK TC	Native ZSK stitch file	●	●

### Home stitch file formats

TrueSizer Web 0.5 supports the following home stitch file formats.

Format	Brand	Format	Read	Write
ARX	Artista	Cross stitch data file	●	
CSD	Poem / Huskygram / Singer EU	Contains operative information	●	●
HUS	Husqvarna / Viking	Contains stitch data	●	●
JEF	Janome / Elna / Kenmore	Contains stitch data	●	●
PCD	Pfaff	Pfaff file format	●	●
PCQ	Pfaff	Cross stitch data file	●	●
PCS	Pfaff	Contains stitch data	●	●



PEC	Brother / Babylock / Deco	Contains stitch data	●	●
PES	Brother / Babylock / Deco	Contains information about stitch arrays	●	●
PMU	Proel	Contains operative information	●	
PUM	Proel DOS	Contains operative information	●	
SEW	Janome / Elna / Kenmore	Contains stitch data	●	●
XXX	Compucon / Singer	Contains stitch data	●	●

## Copyright

Copyright © 1998-2013 Wilcom Pty Ltd. All rights reserved.

No parts of this publication or the accompanying software may be copied or distributed, transmitted, transcribed, stored in a retrieval system or translated into any human or computer language, in any form or by any means, electronic, mechanical, magnetic, manual, or otherwise, or disclosed to any third party without the express written permission of:

Wilcom Pty Ltd. (A.B.N. 43 001 971 919)  
 146-156 Wyndham Street, Alexandria (Sydney)  
 New South Wales, 2015, Australia  
 PO Box 581, Alexandria, 1435  
 Phone: +61 2 9578 5100  
 Fax: +61 2 9578 5108  
 Email: [support@wilcom.com](mailto:support@wilcom.com)  
 Web: <http://www.wilcom.com>

TrueView™ and Point & Stitch™ are trademarks of Wilcom Pty Ltd. Portions of the imaging technology of this Product are copyrighted by AccuSoft Corporation. The EPS File Import/Export Converter used in this Product is copyrighted by Access Softek, Inc. All rights reserved.

## Contact

If you have any queries, report them via TrueSizer Web itself – see [Reporting suggestions](#) – or contact Wilcom Support at <http://www.wilcom.com/support>.