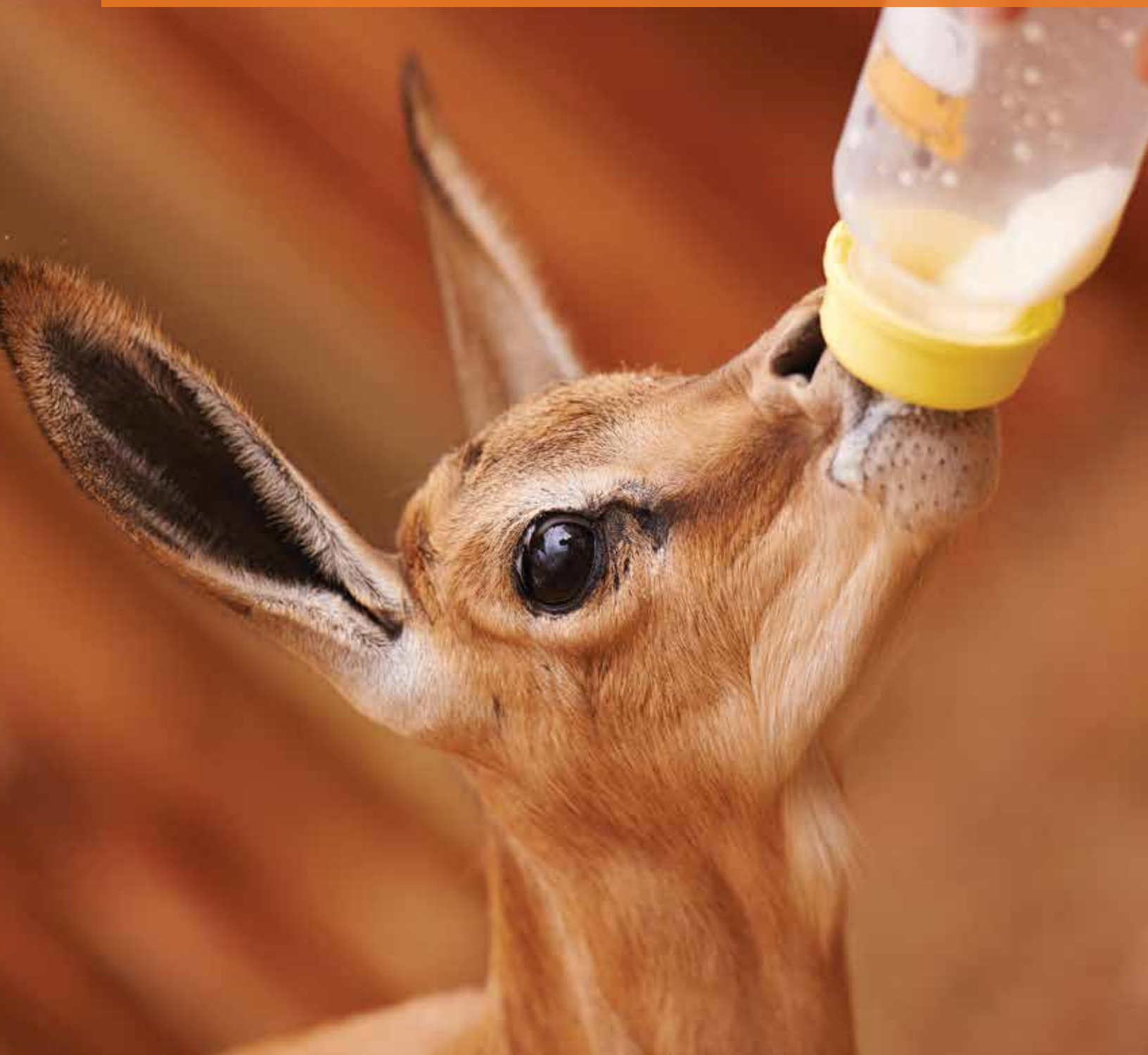


WILDLIFE REHABILITATION

AT THE ANIMAL BEHAVIOR INSTITUTE



A more personal education



MEANINGFUL

WHAT

IS WILDLIFE REHABILITATION?

Wildlife rehabilitation is the care and treatment of injured, orphaned or displaced wildlife. The ultimate goal is to return healthy animals to the wild by fostering their release into appropriate habitats. Animals that cannot be released may be used for educational programs and outreach when appropriate. Consequently, those interested in rehabilitation careers should also be comfortable with public speaking and environmental education.

Rehabilitators are involved in all aspects of wildlife care, from intake to release. Rehabilitators participate in feeding, medicating, veterinary care, and the cleaning of both the animals and the facilities. As animals grow and heal, they may need to be strengthened and gradually re-accustomed to the wild prior to release. Thus, rehabilitators must provide opportunities for species-appropriate exercise, such as running, flying, digging or swimming. Animals may also need physical therapy or pre-release conditioning in order to maximize their likelihood of success after release.

Are you ready to start working with injured or orphaned wildlife? Do you want to develop the skills to rehabilitate and release wild animals? The Animal Behavior Institute is the only institution to offer accredited, online programs in Wildlife Rehabilitation. Our specialized training will give you the skills you need to get started in rehabilitation and embark on a new career.

866.755.0448 • support@animaledu.com • www.animaledu.com



PERSONAL

WHO

WORKS WITH INJURED WILDLIFE?

Wildlife Rehabilitators

While wildlife rehabilitators obviously work with animals, they must also work with the public. Rehabilitators interact with people in educational programs, during animal intake or when handling the daily calls that come in to their facility. Rehabilitators help manage human-wildlife conflict, educating the public about wildlife needs and promoting good conservation practices. Larger facilities may hire wildlife educators that specialize in public education.

Wildlife Educators

Wildlife educators often work with school systems although they may also deliver programs to private or community groups. They design and write educational programs for children and adults and should be comfortable with public speaking. Depending on the size of the institution, educators may deliver the programs themselves or train additional staff members to deliver programs. The programs often use live animals and/or animal artifacts to engage and teach. Thus, wildlife educators need a thorough understanding of the animals, their natural history, and their behavior. Educators should have a good working knowledge of educational standards, animal training, and teaching methods.

What are some of the positions available working in wildlife rehabilitation?

- Wildlife rehabilitator
- Raptor rehabilitator
- Volunteer coordinator
- Veterinary assistant
- Museum interpreter
- Environmental educator
- Veterinary technician
- Marine mammal coordinator
- Wildlife educator
- Veterinarian
- Animal behaviorist
- Wildlife nutritionist

Wildlife rehabilitators and educators may work in wildlife centers or as part of a larger institution (such as a zoo, aquarium or museum). While some positions are paid, many rehabilitators are volunteers. Competition for paid positions can be keen; additional education and experience will give you a competitive edge when you're ready to seek employment.

866.755.0448 • support@animaledu.com • www.animaledu.com



FLEXIBLE

WHEN CAN I START?

Now! Getting started is easy - you can apply online in minutes. Once you're ready to schedule your courses, your academic advisor can help you plan the program that best fulfills your needs. Your certificate in Wildlife Rehabilitation requires the completion of five online courses and 40 hours of relevant field experience. Most students finish their certificate in 6-12 months.

Academic Curriculum

The coursework is designed to provide you with a rigorous education in Wildlife Rehabilitation, including the fundamentals of rehabilitation, environmental education, wildlife management, nutrition and disease. In addition, you'll choose an elective from the field of animal behavior.

The four required courses for this certificate program are:

1. ABI 142 Environmental Education & Outreach
2. ABI 214 Principles of Wildlife Rehabilitation
3. ABI 262 Wildlife Management
4. ABI 311 Animal Nutrition, Health & Disease

You will also select one elective from the following:

1. ABI 222 Animal Enrichment
2. ABI 233 Animal Training
3. ABI 281 Avian Training
4. ABI 331 Animal Behavior

Field Requirement

We believe that academic training must be accompanied by real world experience to be truly effective. During your time as a student, you will complete a field requirement consisting of 40 hours of hands-on experience as an employee, intern or volunteer at an approved institution of your choice. One of the strengths of our program is that students are able to choose where they would like to complete their fieldwork; the facility is not assigned.

866.755.0448 • support@animaledu.com • www.animaledu.com



EXCEPTIONAL

WHY

ANIMAL BEHAVIOR INSTITUTE?

Widespread Recognition & Acceptance

You can be confident about pursuing your education with the Animal Behavior Institute. Our quality programs enjoy widespread acceptance at other institutions. We are licensed by the North Carolina State Board of Community Colleges* and accredited by the International Association for Continuing Education and Training (IACET). As a result of this Accredited Provider status, the Animal Behavior Institute is able to offer IACET CEU credits. These credits are accepted by hundreds of professional associations, including those in the fields of therapy, counseling and health care. Credit from our courses can also be applied to meet the continuing education requirements of many educational institutions, including public and private schools.

In addition, individual courses are accepted directly for CEU credit by the American Association of Veterinary State Boards, the International Association of Animal Behavior Consultants, the Certification Council for Professional Dog Trainers, and the Association of Zoos and Aquariums. Please see our website at www.animaledu.com for a complete listing of our educational partners.

Upon graduation, students may begin using the designation CWRP, Certified Wildlife Rehabilitation Professional.

Personal Support

We'll provide you with close personal support from the day you begin until well after you've finished your program. When you enroll at the Animal Behavior Institute, your academic advisor will help you plan your individual program and answer any questions that arise along the way. Students have the freedom to choose how many classes to take each semester, when to take them and how to pay for them. And our flexible financing makes any program affordable. Qualified students can choose to finance a single course or their entire program – it's up to you.

As an alumnus, you'll have access to the same resources you've come to enjoy as a student. This includes access to job and internship listings, advising and assistance with resumes and cover letters. We're with you before and after you graduate.

*The Animal Behavior Institute is licensed by the North Carolina State Board of Community Colleges having met the requirements of Article 8 of Chapter 115D of the General Statutes of North Carolina. Please note that the NC State Board of Community Colleges is not an accrediting agency.

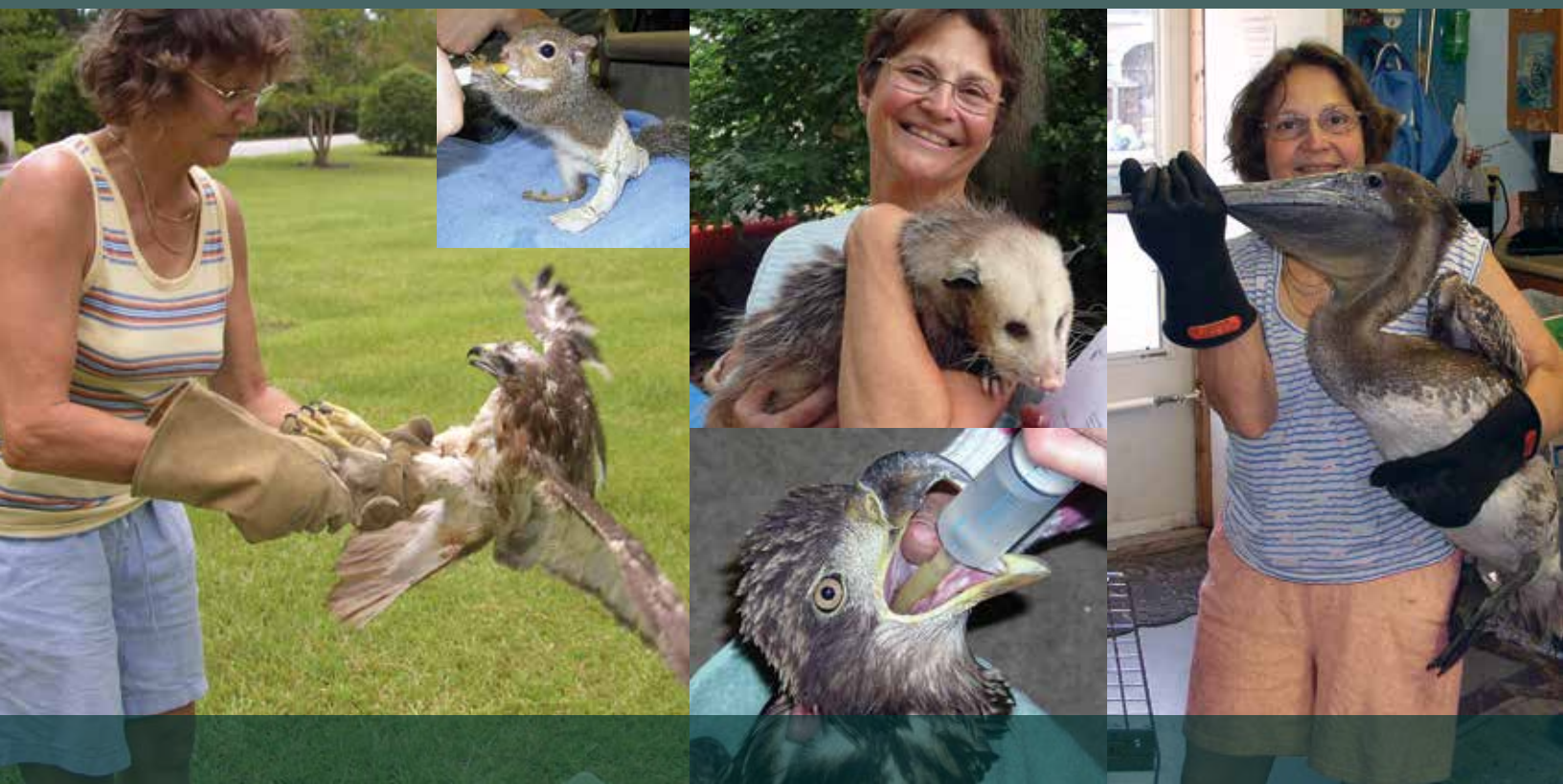
866.755.0448 • support@animaledu.com • www.animaledu.com



PROFESSIONAL

All courses at the Animal Behavior Institute share a common core, building a strong foundation and then applying that core to problem solving. The highlight of each week is a student-centered discussion; students work collectively to solve real world problems and case studies. Our approach helps build a strong rapport between each individual, their student colleagues, and the faculty. Small class sizes ensure that you'll know your instructors and receive the personal education you deserve.

An academic institution is only as strong as their faculty and ours are outstanding. Our faculty are selected on the basis of their education, experience, and passion for teaching. We'd like to introduce you to two of the instructors in our Wildlife Rehabilitation program. (For a complete list of instructors and their qualifications please visit us at www.animatedu.com.)



FACULTY SPOTLIGHT

TONI O'NEIL
Professor of Wildlife Rehabilitation



Professor O'Neil has worked as a wildlife rehabilitator and wildlife educator for over twenty years. She is the founder and director of Possumwood Acres

Wildlife Sanctuary in North Carolina, a wildlife facility specializing in rehabilitation, care and treatment of mammals, birds and reptiles. Professor O'Neil manages the entire rehabilitation facility at the sanctuary yet still finds time to run a very active wildlife education program using their non-releasable raptors. In addition to teaching for the Animal Behavior Institute, Professor O'Neil is an adjunct faculty member at the Coastal Carolina Community College where she teaches Biology, Zoology and Wildlife Rehabilitation.

Professor O'Neil is a sought after speaker, presenting regularly at wildlife symposiums and conferences. She readily lends her expertise to other organizations, having served on the Board of Directors at numerous institutions such as the Carolina Raptor Center, Duck Rescue Network, Wildlife Rehabilitators of North Carolina, Carolina Waterfowl Rescue, Carolina Wild Care and Animal Rehabilitators of the Carolinas. She is the proud recipient of the Governor's Award and the Onslow County Award for Service Excellence.

CHRISTINE REMINGTON
Professor of Wildlife Nutrition & Disease



Professor Remington teaches a broad array of courses at the institute, including wildlife nutrition & disease, exotic animal management & conserva-

tion, and husbandry & record keeping. Prior to joining the Animal Behavior Institute, Professor Remington spent seven years as a faculty member and department chair at Alamance Community College.

Professor Remington specializes in wildlife animal care and husbandry. She has worked in several public and private zoos and has served on the board of directors for wildlife preserves. Professor Remington has presented her academic research to colleagues at the U.S. Department of Agriculture, the American Society of Animal Science and the Comparative Nutrition Society.

In addition to teaching at the Animal Behavior Institute, Professor Remington serves as an adjunct faculty member and program coordinator at Bristol Community College.

Office of Admissions

Animal Behavior Institute, Inc.
4711 Hope Valley Road
Suite 4F-332
Durham, NC 27707

Toll Free:

(866) 755-0448

Fax:

(866) 351-6911

Email:

support@animaledu.com

www.animaledu.com



A more personal education