

ROCKWOOD

WINDJAMMER * SIGNATURE ULTRA LITE TRAVEL TRAILERS & FIFTH WHEELS



ROCKWOOD
WINDJAMMER * SIGNATURE ULTRA TRAVEL TRAILER & FIFTH WHEELS



YOUR LITE WEIGHT SPECIALIST.



3008W Churchill with Hickory

02

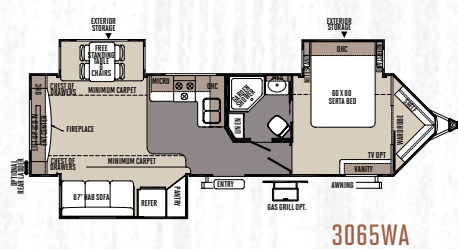
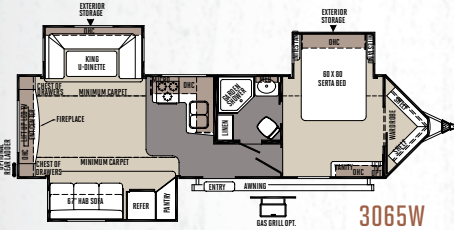
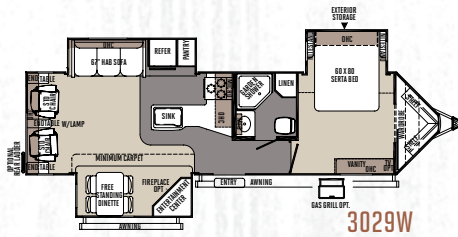
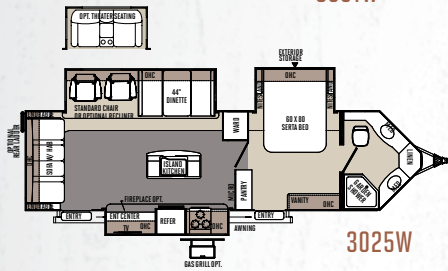
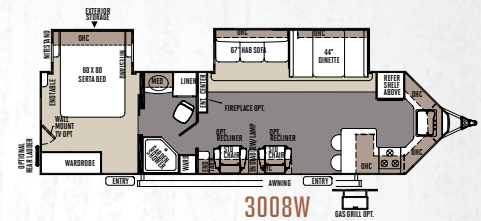
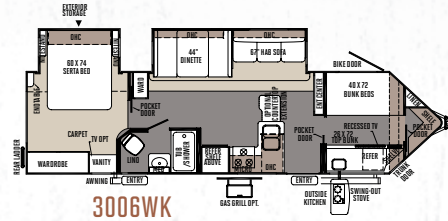
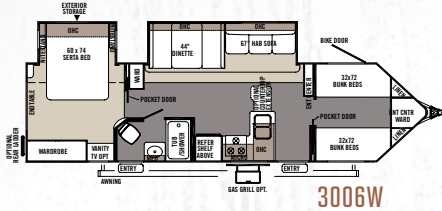
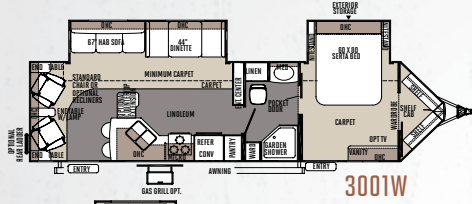
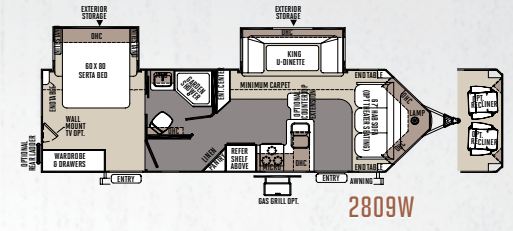
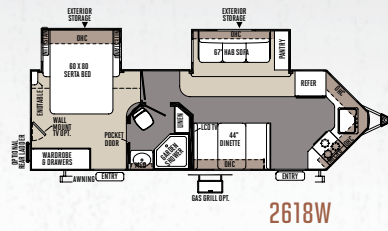
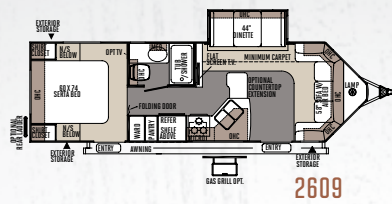
ROCKWOOD WINDJAMMER

AERODYNAMIC PROFILES MAKE ALL THE DIFFERENCE.

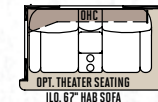
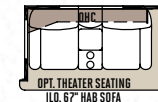
"V" nose design to utilize every possible space for interior room and storage. While the aerodynamic, six-sided vacuum-bonded exteriors can be towed by a wide variety of vehicles on the market, the available standards and options provide extensive customization for each individual consumer.



Unique galley style kitchen provides for an efficient work space and more counter space than expected.



SUPER SLIDE-OUT OPTIONS



OPT. THEATER SEATING
NOT AVAILABLE
I.L.O. 60\"/>

ATRIUM / FREE STANDING TABLE & CHAIRS OPTION



KING \"U\" DINETTE OPTION

SPECIFICATIONS

Model number of any particular unit does not necessarily reflect the overall length of the unit itself.
Dry weights are estimates.

MODEL	2609W	2618W	2809W	3001W	3006W	3006WK	3008W	3025W	3029W	3065W	3065WA
BASE/DRY UNIT WEIGHT	5528	5985	6121	6889	6945	7308	7038	7559	7263	7055	7095
BASE DRY HITCH WEIGHT	589	638	701	821	833	879	882	971	918	982	937
BASE DRY AXLE WEIGHT	4939	5347	5419	6068	6112	6429	6155	6588	6345	6073	6157
CARGO CAPACITY	1622	1665	1629	1661	1605	1542	1512	1491	1587	1595	1555
LENGTH	29' 7"	29' 7"	31' 7"	34' 5"	34' 5"	34' 5"	34' 5"	34' 5"	34' 11"	34' 5"	34' 5"
WIDTH	96"	96"	96"	96"	96"	96"	96"	96"	96"	96"	96"
HEIGHT W/D/A/C	118"	118"	118"	118"	118"	118"	118"	118"	118"	118"	118"
INTERIOR HEIGHT	80"	80"	80"	80"	80"	80"	80"	80"	80"	80"	80"
FRESH WATER CAPACITY	43 GAL	43 GAL	43 GAL	43 GAL	43 GAL	43 GAL	43 GAL	43 GAL	43 GAL	43 GAL	43 GAL
GRAY WATER CAPACITY	38 GAL	76 GAL	38 GAL	38 GAL	38 GAL	76 GAL	76 GAL	76 GAL	38 GAL	38 GAL	38 GAL
BLACK WATER CAPACITY	38 GAL	38 GAL	38 GAL	38 GAL	38 GAL	38 GAL	38 GAL	38 GAL	38 GAL	38 GAL	38 GAL



Rear bedroom with a walk around bed slide and spacious wardrobe

ROCKWOOD DIAMOND PACKAGE

THE UPGRADE PACKAGE YOU WANT ON ANY MODEL YOU CHOOSE.



Tan High Gloss Fiberglass with Black Accents (*Diamond Package only*)

Always striving to make the best even better, Rockwood has assembled a collection of upscale features and amenities designed to bring distinctive styling and added luxury to the aerodynamic Windjammer travel trailers and Signature Ultra Lite series of travel trailers and fifth wheels. Complete details of the Diamond Package contents can be found in the Standards and Options section.



Shielded Awning Covers (*Diamond and Platinum Packages*)



Tinted Bonded Frameless Windows with Tan Fiberglass (*Diamond Packages*)

NOW YOU CAN HAVE ALL RICH APPOINTMENTS OF THE DIAMOND PACKAGE WITH THE TRADITIONAL WHITE FIBERGLASS EXTERIOR YOU'VE ALWAYS LOVED.



Shown Above: "Tufted" Hide-A-Bed Sofa Upgrade (with Kensington/Cherry Decor), Deluxe Interior Window Treatment, Upgrade Decorative Slide out Fascia. (Diamond and Platinum Packages)

WELCOME TO THE PLATINUM PACKAGE

The optional Package includes all the interior features found the Diamond Package along with exclusive tinted bonded frameless windows and shielded awning covers with a traditional white fiberglass exterior. Complete details of the Platinum Package contents can be found in the Standards and Options section.



Tinted Bonded Frameless Windows with White Fiberglass (Platinum Package only)

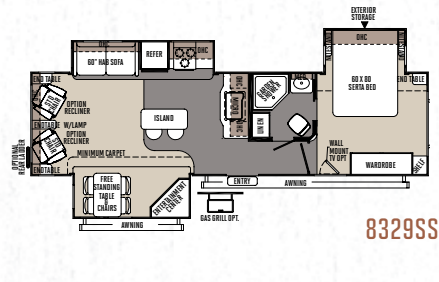
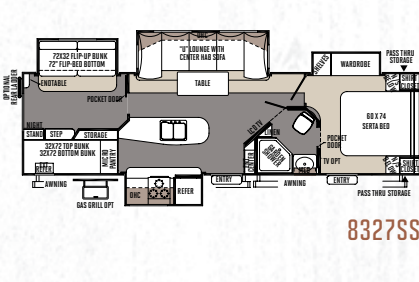
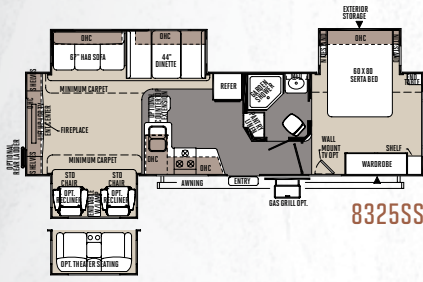
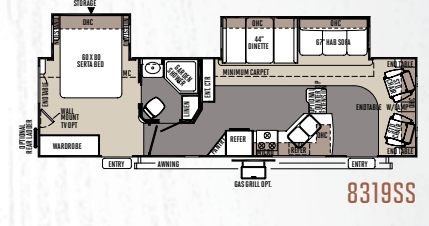
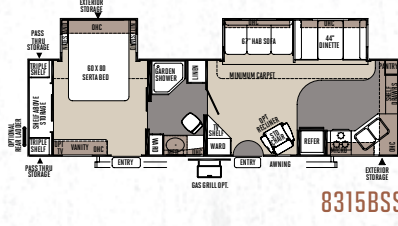
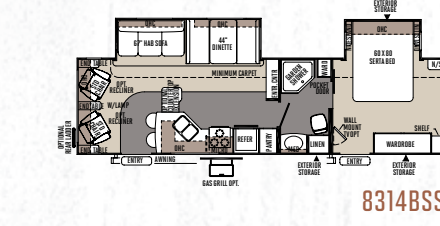
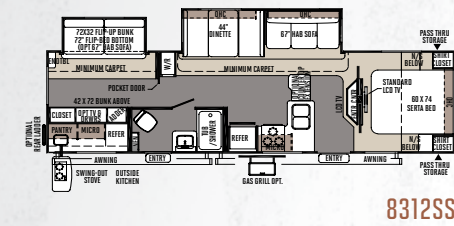
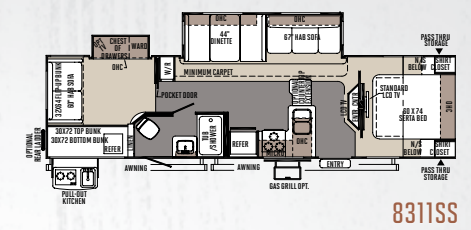
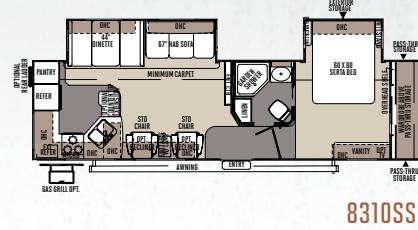
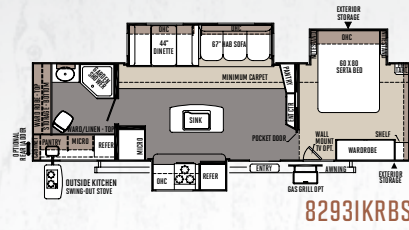


Upgraded Cabinetry Hardware (Diamond and Platinum Packages)

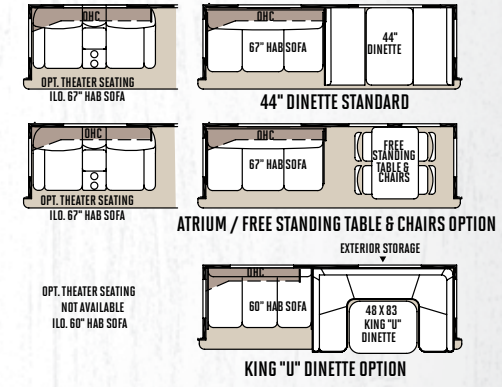


Solid Surface Corian Counter Tops in the Kitchen and Living Room (Diamond and Platinum Packages)





SUPER SLIDE-OUT OPTIONS



SPECIFICATIONS

Model number of any particular unit does not necessarily reflect the overall length of the unit itself. Dry weights are estimates.

MODEL	82931KRBS	8310SS	8311SS	8312SS	8314BSS	8315BSS	8319SS	8325SS	8327SS	8329SS
BASE/DRY UNIT WEIGHT	7230	7033	7180	7194	6807	6843	6965	7246	7648	7399
BASE DRY HITCH WEIGHT	954	856	646	848	941	905	639	746	1012	833
BASE DRY AXLE WEIGHT	6276	6177	6534	6346	5867	5938	6327	6500	6636	6567
CARGO CAPACITY	1520	1517	1470	1456	1643	1507	1585	1504	1502	1451
LENGTH	34' 9"	35'-3"	34'-9"	34'-9"	34'-9"	34'-9"	34'-9"	34'-9"	35'-3"	34'-9"
WIDTH	96"	96"	96"	96"	96"	96"	96"	96"	96"	96"
HEIGHT W/O A/C	118"	118"	118"	118"	118"	118"	118"	118"	118"	118"
INTERIOR HEIGHT	80"	80"	80"	80"	80"	80"	80"	80"	80"	80"
FRESH WATER CAPACITY	43 GAL	43 GAL	43 GAL	43 GAL	43 GAL	43 GAL	43 GAL	43 GAL	43 GAL	43 GAL
GRAY WATER CAPACITY	76 GAL	76 GAL	38 GAL	38 GAL	38 GAL	76 GAL	76 GAL	76 GAL	76 GAL	38 GAL
BLACK WATER CAPACITY	38 GAL	38 GAL	38 GAL	38 GAL	38 GAL	38 GAL	38 GAL	38 GAL	38 GAL	38 GAL



Rear bedroom with a spacious wardrobe slide



8329SS Hampton with Cherry



ROCKWOOD SIGNATURE ULTRA LITE

TRAVEL TRAILERS

BEAUTIFUL SPACIOUS INTERIORS COME STANDARD.

The Signature series has many outstanding features to enhance your camping experience.

The open floorplans and generous storage space allows extra room for those extra things you want to bring along. And sleeping on the comfortable Serta bed, you'll forget you were in the great outdoors. The spacious interior and, picturesque view through the many windows enable you to experience your surroundings in the comfort of your Signature travel trailer.



Rear bedroom with flip-up bunk, Optional Fold Down Sofa and Convenient Attached Half Bath.

08 8281WS Kensington with Hickory

ROCKWOOD SIGNATURE ULTRA LITE FIFTH WHEELS

KIDS WANT TO BRING THEIR FRIENDS? GO FOR IT!

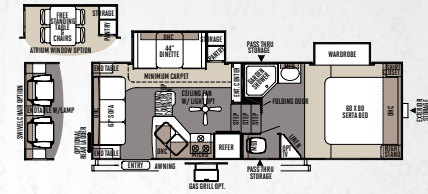
With a rear bedroom and King-U dinette and hide-a-bed sofa, you have all the sleeping space you need. The Rockwood Signature Ultra Lite, making family camping a memorable experience. All Rockwood Fifth Wheels come standard with the **Reese Revolution Hitch** allowing you to tow with almost any size truck bed.



Comfortable Bedroom with Queen Size Serta Mattress and Wardrobe Slide.



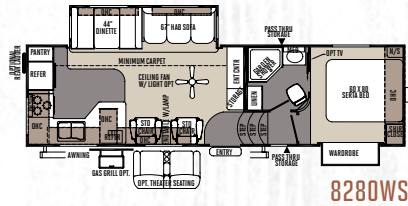
* Refer to the back cover to see the standard Reese Revolution Hitch in action.



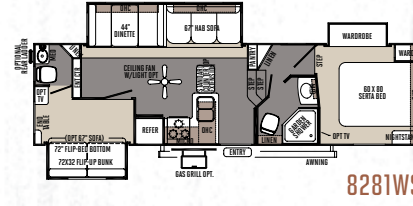
8244WS



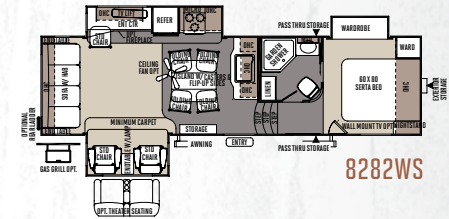
8265WS



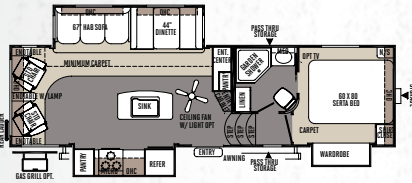
8280WS



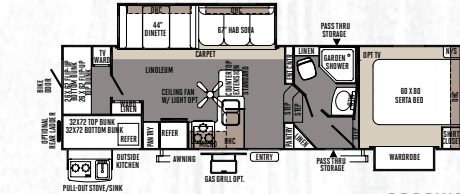
8281WS



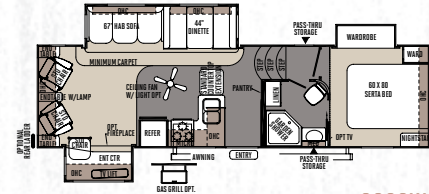
8282WS



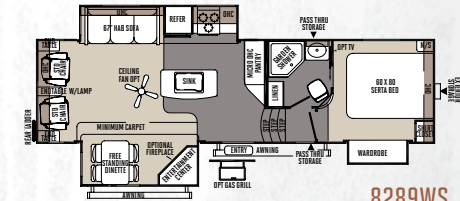
8285IKWS



8286WS



8288WS



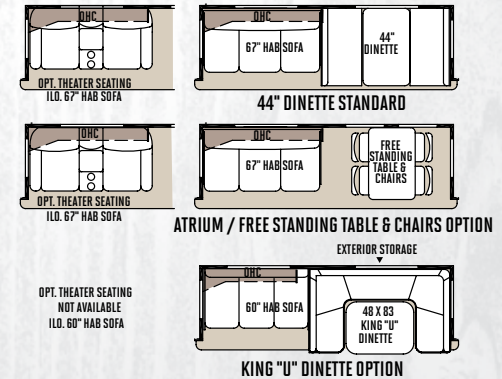
8289WS

SPECIFICATIONS

Model number of any particular unit does not necessarily reflect the overall length of the unit itself. Dry weights are estimates.

MODEL	8244WS	8265WS	8280WS	8281WS	8282WS	8285IKWS	8286WS	8288WS	8289WS
BASE/DRY UNIT WEIGHT	6592	7352	7513	7849	7944	7698	7842	7632	8082
BASE DRY HITCH WEIGHT	1181	1287	1089	1428	1324	1187	1411	1492	1337
BASE DRY AXLE WEIGHT	5410	6065	6424	6421	6620	6511	6431	6141	6745
CARGO CAPACITY	1458	1498	1537	1501	1406	1552	1508	1618	1268
LENGTH	26'-9"	29'-10"	31'-11"	31'-11"	31'-11"	31'-11"	31'-11"	31'-11"	31'-11"
WIDTH	96"	96"	96"	96"	96"	96"	96"	96"	96"
HEIGHT W/O A/C	148 1/2"	148 1/2"	148 1/2"	148 1/2"	148 1/2"	148 1/2"	148 1/2"	148 1/2"	148 1/2"
FRESH WATER CAPACITY	43 GAL	43 GAL	43 GAL	43 GAL	43 GAL	43 GAL	43 GAL	43 GAL	43 GAL
GRAY WATER CAPACITY	38 GAL	38 GAL	76 GAL	76 GAL	38 GAL	76 GAL	76 GAL	76 GAL	76 GAL
BLACK WATER CAPACITY	38 GAL	38 GAL	38 GAL	76 GAL	38 GAL	38 GAL	38 GAL	38 GAL	38 GAL

SUPER SLIDE-OUT OPTIONS



ROCKWOOD

POPULAR FEATURES

FEATURES THAT MAKE YOUR TRIPS FEEL LIKE HOME.

Rockwood takes careful consideration to each feature added into each product produced. Every detail is considered ranging from extra sleeping room, storage, comfort and convenience.

Take time to review the features listed below and match them with the competition's products. We're confident you'll discover Rockwood is the superior choice.



1



2



3



4



5



7



6

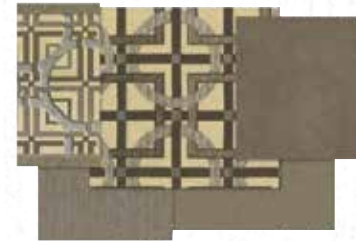
- 1 Adjustable Sleeper Sofa
(Std. Most Models)(Shown with optional "Tufted" style sofa)
- 2 Full 60" x 80" queen adjustable mattress on standard size sofa (54" x 80" Double air mattress with King-U-Dinette option)
- 3 Serta residential grade mattress *(Std.)*
- 4 Additional storage under sofa
- 5 Extra large dinette storage drawers and full extension metal guides in the kitchen *(Std.)*
- 6 Free-standing chair with seat storage and table with extension *(Opt.)*
- 7 32" LCD TV w/ 5.1 Dolby Speaker System with "Bluetooth" Technology *(Most Models)*



- 1 Forest River Switch Center (Std.)
- 2 Gaming plate (Std.)
- 3 Day night shades (Std.)
- 4 The Reese Revolution pin box provides: 1) Full 90 degree worry free turning, 2) Eliminates the need for a slider, 3) Greatly enhances maneuverability www.reeseprod.com (Std.)
- 5 Door side cable hook up (Std. Selected Models)
- 6 Heated holding tanks with 12 Volt heat pads secured to the bottom No need to use the furnace to heat tanks when traveling. (Std.)
- 7 For convenient winterizing, easy access to the water pump/filter and outside antifreeze inlet are provided. (Std. FW)
- 8 Heated pass through storage with separated front trunk area (Std. FW)
- 9 TPO front cap adds strength and durability (Std.)
- 10 Front window with rock guard for additional daylight (Most TT models)



CHURCHILL



HAMPTON



KENSINGTON



CHERRY DÉCOR OPTION



HICKORY DÉCOR STANDARD



STANDARD FLOOR COVERING

OPTIONAL FLOOR COVERING

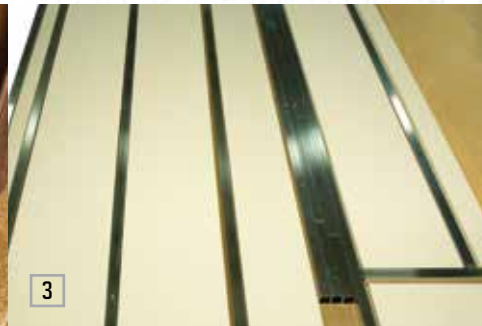
ROCKWOOD

QUALITY CONSTRUCTION

THE DETAILS ARE WHAT MAKE ALL THE DIFFERENCE.

Rockwood takes pride in constructing the very best products possible in each price point. From our entry level units to our top of the line products, no short cuts are taken to achieve excellence.

From the all-steel I-beams to the residential interior amenities to the vacuum-bonded exteriors, Rockwood products are quality built from the ground-up.



- 1 Glued and screwed wood cabinetry
- 2 Aluminum dinette frames for added strength and weight savings
- 3 Vacuum-bonded floor with 16" on center aluminum floor joists
- 4 Extra large dinette storage drawers
- 5 Full extension metal drawer guides in the kitchen
- 6 Dexter Torflex Axles:
 - Independent wheel suspension and self-damping action
 - Rubber cushioning eliminates metal-to-metal contact.
 - Forged torsion arm for maximum strengthModels are also equipped with E-Z Lube® System and Nev-R-Adjust® Brakes.
- 7 Enclosed underbelly protects trailer components as well as increasing aerodynamics
- 8 Aluminum Frame Construction with high gloss fiberglass exterior and deluxe graphics

ROOF CONSTRUCTION



Vacuum-bonded radius roof with vaulted ceiling providing superior insulation and more interior height.



4" thick roof with built in insulated A/C ducts



Built strong to enable you to conveniently perform periodic roof maintenance.

WALL STRENGTH



Structurally engineered materials makes our vacuum-bonded walls some of the strongest in the industry.

VACUUM-BONDED LAMINATED CONSTRUCTION



Rockwood is one of the few manufacturers that is a **fully 6 sided vacuum-bonded trailer**. Our walls, floors, roof, fronts and backs are all aluminum framed and vacuum-bonded to ensure a light weight strong structural trailer.

STANDARDS & OPTIONS

Standards & Options are subject to change.

MODELS	W	SUL TT	SUL FW	MODELS	W	SUL TT	SUL FW	MODELS	W	SUL TT	SUL FW
INTERIOR FEATURES											
· Hickory Interior	S	S	S	· LCD TV With 5.1 Digital Dolby Surround Sound Speaker System	S	S	S	· Movable Wood Table/Island w/ Folding Chairs (Std. 8282WS)	--	--	S*
· Cherry (w/ Solid Cherry Hand Rubbed Cabinet Doors) Interior	0	0	0	· Digital AM/FM/DVD w/ "Bluetooth" Technology	S	S	S	· Free Standing Table and Chairs (NA w/: 8327SS, 8282WS) (STD. 3029W, 3065WA, 8329SS, 8289WS)	0*	S*/0*	S*/0*
· Decorative Slide Out Fascia	S	S	S	· MP3 Player Hook-Up	S	S	S	· Stainless Steel Appliances	0	0	0
· Upgraded Decorative Slide Out Fascia	DP/PP	DP/PP	DP/PP	· 24" LCD TV Mounted in Bedroom (Std., Only on TT Models w/ Center Entertainment Floor Plans)	--	S*	--	· Raised Refrigerator Panels	0	0	0
· Solid Wood and Raised Panel Doors and Drawers	S	S	S	· LCD Bedroom TV With Outside Mounting Bracket	0	0	0	· Auto Gas/Electric Refrigerator	S	S	S
· Screwed and Glued Cabinetry	S	S	S	· Jack Knife Sofa (Std. 8244WS, Opt. 8281WS)	--	--	S*/0*	· Three Burner High Output Gas Range with Glass Top Cover	S	S	S
· Residential Full Extension Metal Drawer Guides in Kitchen	S	S	S	· Air Hide-A-Bed Sofa w/ Storage (N/A w/: 8244WS) (Opt., 8312SS 2nd sofa)	S*	S/0*	S*	· Upgraded 22" Gas Oven (N/A 8244WS)	SO	S	S
· Upgraded Cabinetry Hardware	DP/PP	DP/PP	DP/PP	· Upgraded "Tufted" Air Hide-A-Bed Sofa w/ Storage (N/A w/: 2609W, 8244WS)	DP*/PP*	DP*/PP*	DP*/PP*	· Microwave Oven	SO	SO	SO
· Flooring: Carpet and an Engineered Mold and Mildew Resistant Floor Covering	S	S	S	· Swivel Chair(s) (Opt. 8244WS)	S*	S*	S*/0*	· Solid Surface Corian Counter Tops in Kitchen/Living Room w/ Two Piece Sink Cover	DP/PP	DP/PP	DP/PP
· Minimum Carpet available	0	0	0	· Lazy Boy Leather Recliner Option: Available ILO All Units With Standard Barrel Chairs and 2809W ILO Front Sofa	0	0	0	· Flush Mount Stone Cast Sinks With Lift-Off Kitchen Faucets	S	S	S
· Floor Ducted Furnace	S	S	S	· Leather Theater Seating: Available ILO Barrel Chairs (Opt. w/ 3025W, 8325SS, 8282WS Only), and ILO 67" HAB Sofa) (All Models Except 2609W, 3029W, 8329SS, 8289WS)	0*	0*	0*	· Residential One-Piece Sink Cover/ Cutting Board Water-Pur Filtration System	S	S	S
· 13,500 BTU Ducted Roof Air	SO	SO	SO	· End Table With Attached Lamp (Where available)	S	S	S	· Counter Top Extension (Std. 8281WS, 8286WS, 8288WS) (N/A W/: 2618W, 3008W, 3025W, 3029W, 3065WA, 2931KRBS, 8315BSS, 8327SS, 8329SS, 8282WS, 8285IKWS, 8289WS)	0*	0*	S*/0*
· 15,000 BTU Ducted Roof Air	0	0	0	· Designer Valances w/ Lambrequin Arms	S	S	S	· Trash Can in Kitchen (Most Models)	S	S	S
· 2nd Roof A/C W/ 50 Amp Service	0*	0	0*	· Day/Night Shades	S	S	S	· Tub Surround	S	S	S
· Fireplace (Std. 3065W, 3065WA, 8325SS, 8265WS Only) (Opt. 3008W, 3025W, 3029W, 8329SS, 8282WS, 8288WS, 8289WS Only)	S*/0*	S*/0*	S*/0*	· Deluxe Interior Window Treatment	DP/PP	DP/PP	DP/PP	· Bathroom Skylight	S	S	S
· Ceiling Fan	--	--	0	· Aluminum Bed and Dinette Frames	S	S	S	· Six Gallon "Quick Recovery" 110 DSI Gas/Electric Water Heater	SO	S	S
· Carbon Monoxide Detector	SO	SO	SO	· 44" Family Style Dinette (N/A w/: 2809W, 3029W, 3065W, 3065WA, 8327SS, 8329SS, 8282WS, 8289WS)	S*	S*	S*	· Water Heater By-Pass Kit	S	S	S
· 12 Volt Power Plug With USB Charging Port	S	S	S	· 48" X 84" Spacious King-U-Style Dinette (Std. 2809W, 3065W) (N/A w/: 2609W, 2618W, 3029W, 3065WA, 8329IKRBS, 8325SS, 8327SS, 8329SS, 8244WS, 8265WS, 8282WS, 8285IKWS, 8288WS, 8289WS)	S*/0*	0*	0*	· Residential Style Porcelain Bowl Foot Flush Toilet	S	S	S
· CSA	0	0	0	· Spacious U-Lounge with Center HAB Sofa and Table (8327SS Only)	--	S*	--	· Create-a-Breeze Three Speed Fantastic Fan With Vent Cover	SO	SO	SO
· Monitor Panel	S	S	S	· Free Standing High Pressure Laminated Table With Swing Level Leg	S	S	S	· Extra Create-a-Breeze Fan	0	0	0
· Battery Disconnect Switch	S	S	S					· Residential Serta Mattress Upgrade	SO	SO	SO
· 55 Amp Converter With Charger	S	S	S					· Heated Mattress	0	0	0
· LED 12 Volt Interior Lighting	S	S	S								
· Interior Floor Light by Entrance Door	S	S	S								
· Directional Reading LED Lights on Sofa Slides	S	S	S								
· Residential Dome Style LED Lights Over Sofa and Table	S	S	S								
· Upgraded Recessed LED Lighting Around Medicine Cabinet	S	S	S								

W = WINDJAMMER
 SUL/TT = SIGNATURE ULTRA LITE TRAVEL TRAILER
 SUL/FW = SIGNATURE ULTRA LITE FIFTH WHEEL

S = STANDARD
 SO = STANDARD OPTION
 0 = OPTIONAL

-- NOT AVAILABLE
 * = SELECTED MODELS
 0 = DIAMOND PACKAGE

P = PLATINUM PACKAGE



MODELS	SUL		
	W	TT	FW
EXTERIOR FEATURES			
· Fully Laminated Aluminum Frame (Floor, Sidewall, & Roof)	S	S	S
· Insulation Factors R-7 Side Wall, R-12 Floor and R-14 Roof	S	S	S
· Radius Roof With Vaulted Interior Ceilings	S	S	S
· One Piece Seamless Roofing Membrane	S	S	S
· TV Antenna w/ Cable & Satellite Hook-Up	S	S	S
· Rear Ladder	0*	0	0
· Laminated Fiberglass Sidewalls With High Gloss Finish	SO	SO	SO
· Laminated Taupe Color Fiberglass Sidewalls With			
· High Gloss Finish and Color Keyed Roof	DP	DP	DP
· Deluxe TPO High Gloss Front Cap	S	SO	S
· Electric Slide-Out	S	S	S
· Decorative Frame Skirting	S	S	S
· Power Awning With Adjustable Rain Dump and LED Lighting	SO	SO	SO
· Power Awning With Adjustable Rain Dump, LED Lighting and Shielded Awning Covers	DP/PP	DP/PP	DP/PP
· Awning Slide Topper	0	0	0
· 30" Primary Entrance Door (Most Models)	S	S	S
· Lighted Entry Step	S	S	S
· Large Grab Handles	S	S	S
· Windows w/ Tinted Safety Glass	SO	SO	SO
· Tinted Bonded Frameless Windows	DP/PP	DP/PP	DP/PP
· Thermo Pane Window Upgrade	0	0	0
· Atrium Slide Windows (Super Slides)	S*/0*	S*/0*	S*/0*
· Outside Gas Grill and Worktable	0	0	0
· Outside Grill Prep w/ LP Hookup and Backer	S	S	S
· Outside Speakers	SO	SO	SO
· Outside Shower	S	S	S
· Front Outside "Trunk" Storage Separated From Heated Pass Thru Storage Compartment	--	--	S
· Outside Antifreeze Inlet for Convenient Winterizing	S	S	S
· Slam Latches on Most Exterior Storage Doors (N/A 2609W, 2618W, 2809W)	DP	DP	DP
· Slam Latch on Both Side Pass Thru Storage Doors & Front Compartment Door	--	--	S
· Slam Latch on Pass Thru Storage Doors (Models w/ Front Bedrooms Only)	--	S*	--
· Two 30 lb Gas Bottles	S	S	S

MODELS	SUL		
	W	TT	FW
· Molded Bottle Cover	S	S	S
· Surface Coated Steel I-Beam Frame	S	S	S
· Reese Revolution Hitch	--	--	S
· Power Front Jack	0	0	S
· Stabilizer Jacks	S	S	S
· Power Stabilizer Jacks	0	0	SO
· Torsion Axle, Rubber-Ryde Suspension	S	S	S
· Easy Lube Axles	S	S	S
· 15" Tires With Triple Step	S	S	S
· Aluminum Wheels	SO	SO	SO
· Spare Tire Carrier & Cover	SO	SO	SO
· Enclosed Holding Tanks	S	S	S
· Electronically Controlled Heated Holding Tanks	S	S	S
· Black Water Flush	S	S	S
CONVENIENCE PACKAGE "D" INCLUDES:			
13,500 BTU Ducted Air	SO	--	--
Upgraded 22" Gas Oven			
Microwave Oven			
110 DSI Gas/Electric Six Gallon "Quick Recovery" Water Heater			
Residential Serta Mattress Upgrade			
Fiberglass Exterior With High Gloss Finish			
Power Awning With Adjustable Rain Dump			
Windows w/ Tinted Safety Glass			
Outside Speakers			
Aluminum Wheels			
Spare Tire Carrier & Cover			
CONVENIENCE PACKAGE "E" INCLUDES:			
13,500 BTU Ducted Air	--	SO	--
Microwave Oven			
Residential Serta Mattress Upgrade			
Fiberglass Exterior With High Gloss Finish			
Power Awning With Adjustable Rain Dump			
Windows w/ Tinted Safety Glass			
Outside Speakers			
Aluminum Wheels			

MODELS	SUL		
	W	TT	FW
Spare Tire Carrier & Cover			
Deluxe TPO High Gloss Front Cap			
CONVENIENCE PACKAGE "F" INCLUDES:			
13,500 BTU Ducted Air	--	--	SO
Microwave Oven			
Residential Serta Mattress Upgrade			
Fiberglass Exterior With High Gloss Finish			
Power Awning With Adjustable Rain Dump			
Windows w/ Tinted Safety Glass			
Outside Speakers			
Aluminum Wheels			
Spare Tire Carrier & Cover			
Power Stabilizer Jacks			
DIAMOND PACKAGE INCLUDES:			
Upgraded Decorative Slide Out Fascia	0	0	0
Upgraded Cabinetry Hardware			
Upgraded Air Hide-A-Bed "Tufted" Sofa w/ Storage (N/A w/: 2609W, 8244WS)			
Deluxe Interior Window Treatment			
Solid Surface Corian Counter Tops in Kitchen/Living Room			
Laminated Taupe Color Fiberglass Sidewalls With High Gloss Finish and Color Keyed Roof			
Shielded Awning Covers			
Tinted Bonded Frameless Windows			
Slam Latches on Most Exterior Storage Doors (N/A 2609W, 2618W, 2809W)			
PLATINUM PACKAGE INCLUDES:			
Upgraded Decorative Slide Out Fascia	0	0	0
Upgraded Cabinet Hardware			
Upgrade Air Hide-A -Bed "Tufted" Sofa w/ Storage (N/A w/: 2609W, 8244WS)			
Deluxe Interior Window Treatment			
Solid Surface Corian Counter Tops in Kitchen/Living Room			
Shielded Awning Covers			
Tinted Bonded Frameless Windows			



PRE-DELIVERY INSPECTION FACILITY

20,000 square feet of quality assurance. The bare essentials for a premium product. This state-of-the-art facility gives immediate daily feedback to production for quality assurance in every unit built.



Forest River, Inc. encourages our customers to purchase their Forest River products from a local dealership whenever possible for the following reasons:

- 1) Forest River, Inc. dealers are independently owned and operated businesses so priority service and scheduling is at their discretion and is often provided to customers that purchased their unit at that dealership.
- 2) Purchasing locally allows customers to establish meaningful relationships with a dealer, enhancing the RV experience through assistance with product questions, user tips or RV regulations for your state or country, and much more!
- 3) Canadian customers must meet requirements to bring an RV purchased out of the country to their home. These requirements may involve additional inspections and certifications, taxes and fees. Your local Canadian Dealer is a professional at meeting these requirements.
- 4) Scheduling timely warranty repairs and adjustments through a local dealership provides far greater flexibility and convenience to you, the customer!

It is the goal of Forest River, Inc. that all of our RV owners fully enjoy the RV experience and that customer satisfaction meets or exceeds their expectations!

24/7 EMERGENCY ROADSIDE ASSISTANCE

For a worry-free ownership experience

Forest River includes one

year of Coach-Net RV Technical & Roadside

Assistance with each RV purchase. Whether new to the RV lifestyle or an experienced RV enthusiast, Forest River owners have 24/7 access to technical, operational and emergency road service coverage throughout the US & Canada.

Coach-Net's fast, dependable service is just a phone call away.

Coach-Net®

RV Technical & Roadside Assistance

TIGHT TURN? THE REESE REVOLUTION FIFTH WHEEL HITCH MAKES IT EASY.

With the Reese Revolution standard on all Rockwood Fifth Wheel models, you can tow with almost any size truck bed and have more free space to carry your camping gear.



ROCKWOOD WARRANTY

For details on Rockwood's complete warranty program, see your Rockwood dealer. When it comes to backing products with the same quality and commitment it has when it begins the manufacturing process, the only name you have to remember when you're looking for a recreational vehicle is Rockwood. Rockwood offers the following additional limited warranties to the original purchasers. Consult written warranty for details.

1. Twelve-year vinyl roof warranty, 2. Two-year fiberglass warranty, 3. Five-year axle warranty, 4. One-year bumper to bumper, 5. Available second-year warranty.

YOUR ROCKWOOD DEALER

201 West Elm Millersburg, IN 46543 | www.forestriverinc.com/Rockwood
574.642.2640



Learn More
Scan this barcode using a QR Reader on your smart phone to learn more about Forest River.



A Berkshire Hathaway company.

All specifications contained herein are based on the latest product information at time of printing. Forest River reserves the right to make changes in colors, materials, equipment and specifications at any time without notice and assumes no responsibility for any errors in this brochure. Litho. U.S.A P/W: 2013.11.06