

Winlink Setup and Configuration

Tuesday, June 12, 2012
10:07 PM

Winlink Setup and Configuration

Overview

This explains how I setup my FT897 and Signalink USB interface to use Winmor WL2K for Winlink.

First, I had the rig configured to use HRD with full control over digital modes. Before attempting to get Winlink running, I suggest making sure your equipment works together and can receive and send digital modes such as PSK31.

I'll try to explain the nuances I encountered with Winlink and RMS Express as I continue.

Read the Full Manual

First, open the winlink.org website and read the "how-to..." page.

<http://www.winlink.org/GetStarted>

There are a couple of key points.

- 1) You must be a licensed radio operator to use Winlink.
- 2) You must use the radio email client software to create your account.
- 3) You must make your first connecting using a radio.
- 4) You must send a message at least once every 400 days to keep your account.

To establish your WL2K radio email account you must load user software, configure it properly, and then send a message by connecting to a WL2K RMS radio gateway or CMS telnet port. Send your first message to any email address that already exists (we recommend your main internet e-mail account.) Afterwards, you will be able to receive radio e-mails at your new WL2K address [yourcall@winlink.org].

Now that you have read the how-to, download your software.

<http://www.winlink.org/ClientSoftware>

I chose RMS Express and have been very satisfied with its capabilities.

Open the FTP site and select the latest RMS Express Setup file

<ftp://autoupdate.winlink.org/User%20Programs/>

Download RMS Express

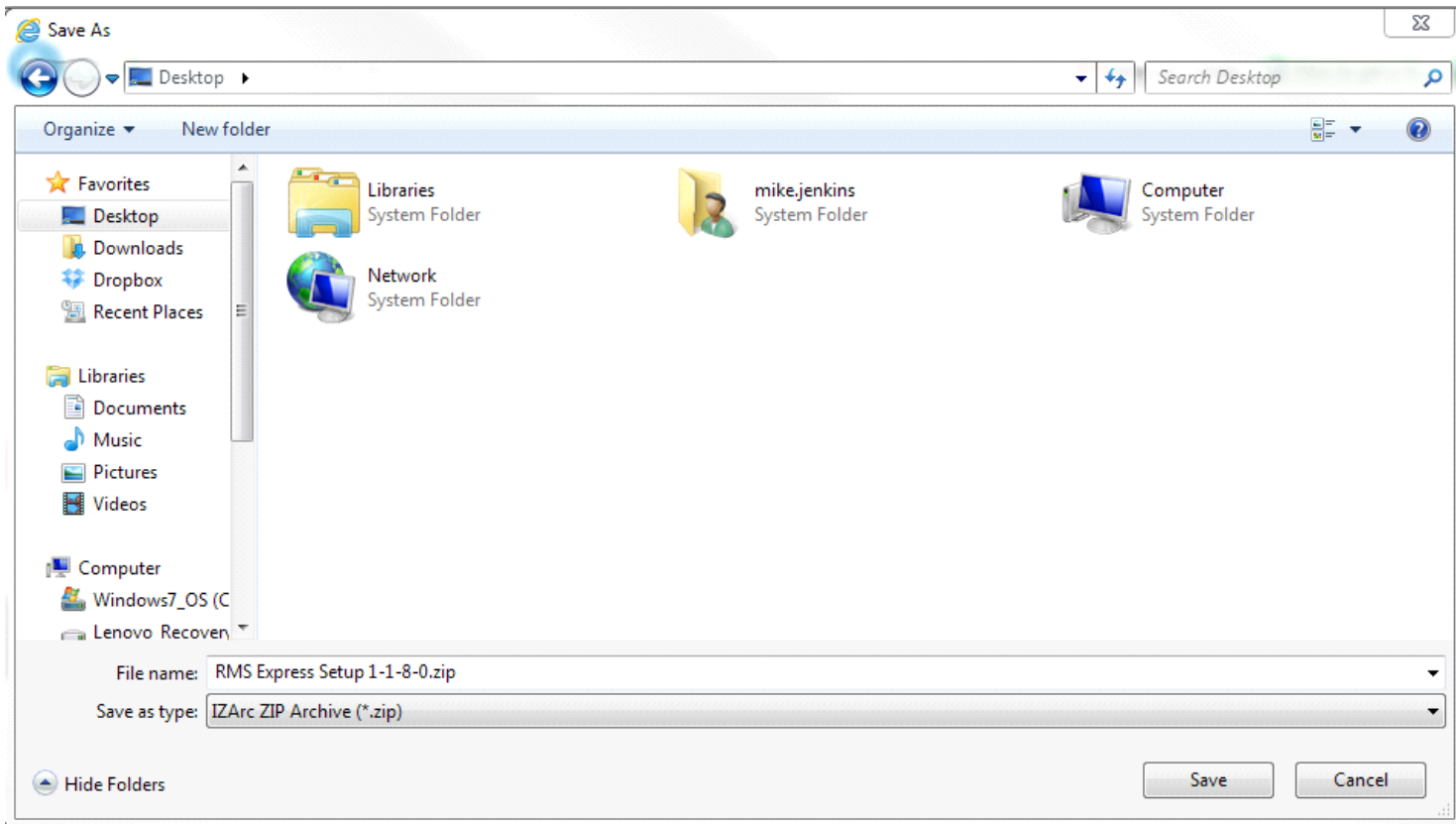
FTP directory /User%20Programs/ at autoupdate.winlink.org

To view this FTP site in Windows Explorer: **press Alt, click View, and then click Open FTP Site in Windows Explorer.**

[Up to higher level directory](#)

05/24/2011 12:00AM	3,219,711	itshfbc_100123.zip
04/20/2012 12:00AM	1,285,938	Paclink Setup 4-3-0-6.zip
06/29/2011 12:00AM	1,111	README Install Instructions.txt
05/28/2012 12:53PM	5,656,910	RMS Express Setup 1-1-8-0.zip
04/15/2012 12:00AM	7,523,178	RMSMessageLog 1-4-0.zip
05/13/2012 01:14PM	12,176	SCS PTC-IIIusb and end of PTC-IIusb Iipro IIex.pdf
09/07/2011 12:00AM	200,155	WINMOR TNC 1.4.0.0.zip

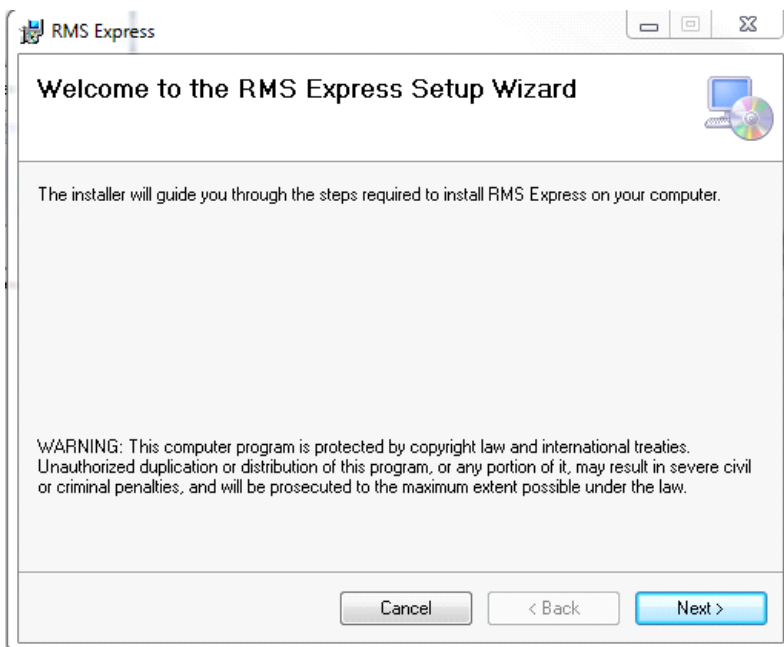
Download the file to your computer. For this demonstration I'll download the file to my desktop.



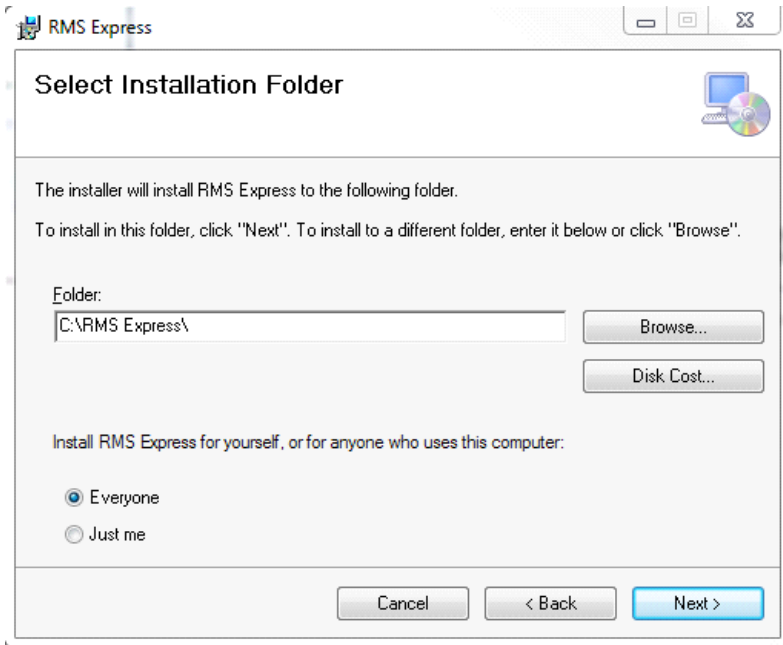
Once the file has been downloaded, open the .zip file.

Install RMS Express

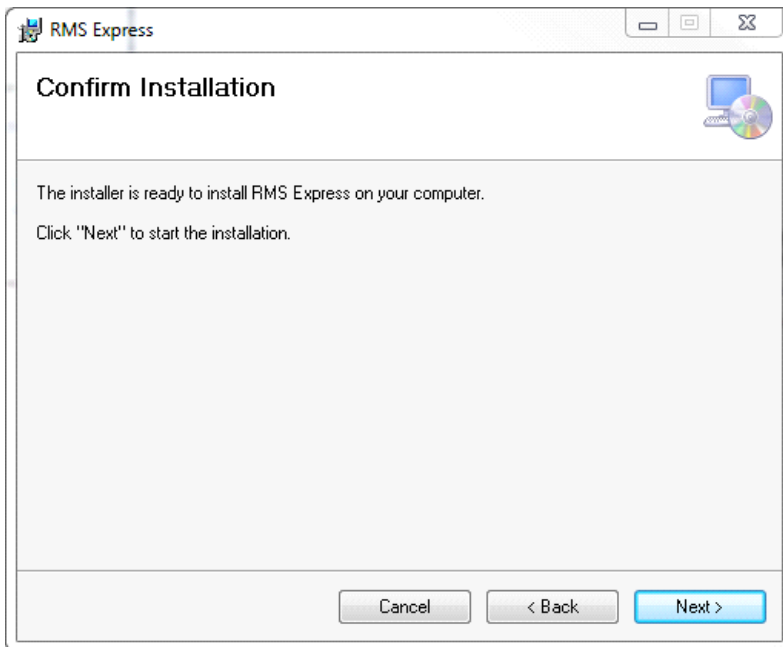
Double-click the RMS Express Setup.msi file to start the setup process.
Accept the default installation parameters.



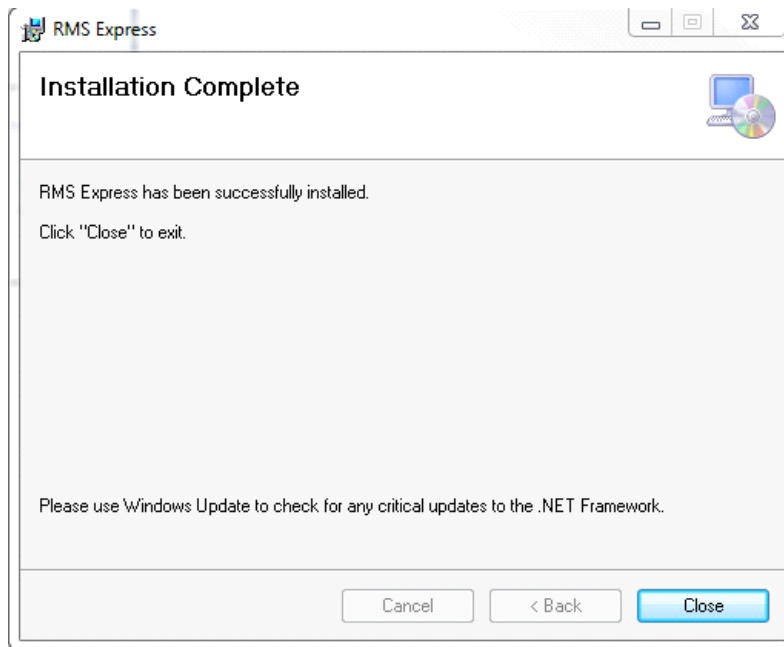
Click **Next**



Click **Next**



Click **Next**



Click **Close**, then close the zip file.

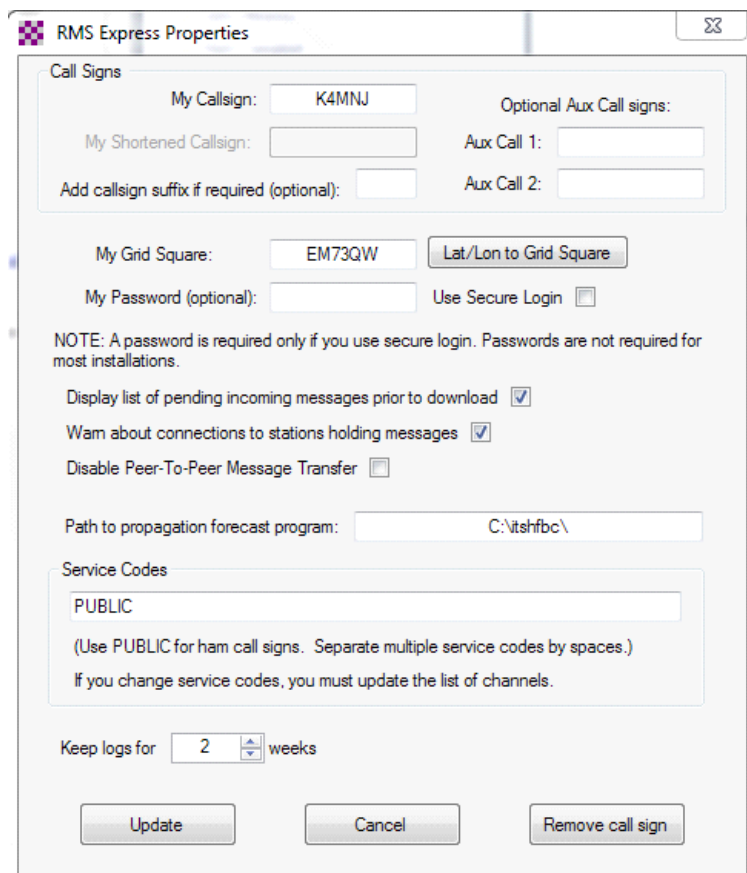
You will now have an RMS Express Icon on your desktop.

Configure RMS Express

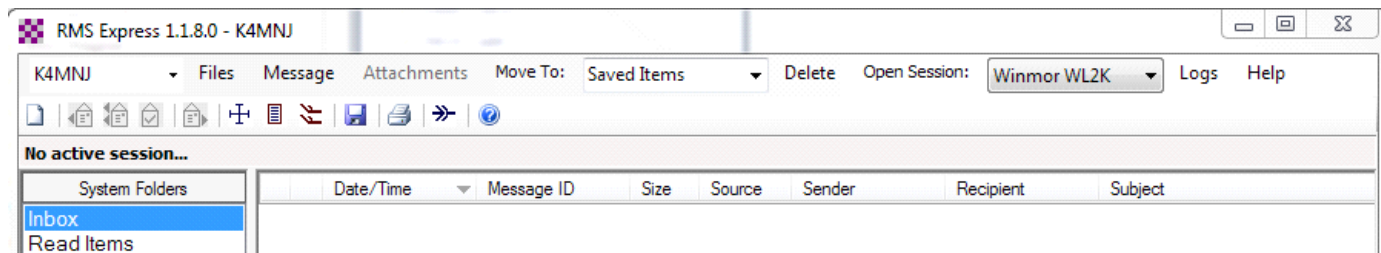


RMS Express

Double click the **RMS Express** Icon.

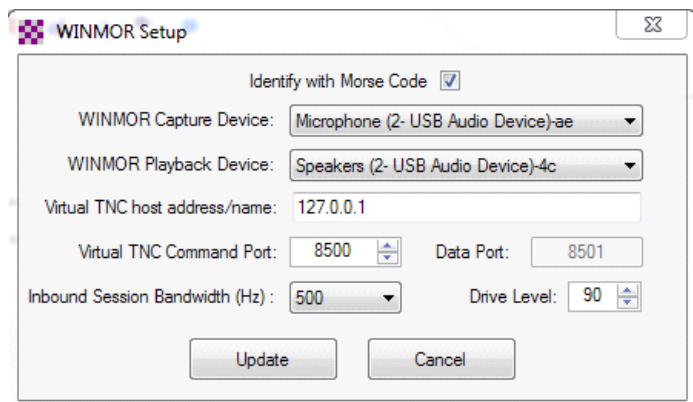


Setup the initial parameters as shown. Use **your callsign** and **Grid Square**.
Click **Update**



Set the Session type to **Winmor WL2K**.

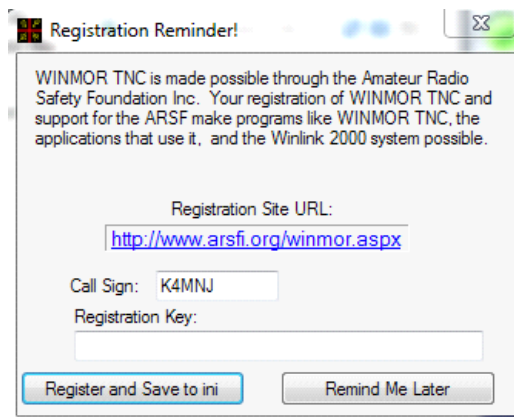
Click the **Open Session** link. The first time, the Winmor Setup screen will appear. Later this can be loaded from the Setup menu item.



Select your incoming capture and playback devices. Each computer will show something different. In my case, I'm using the U SB in and out since the Signalink is a USB sound device.

Click **Update**

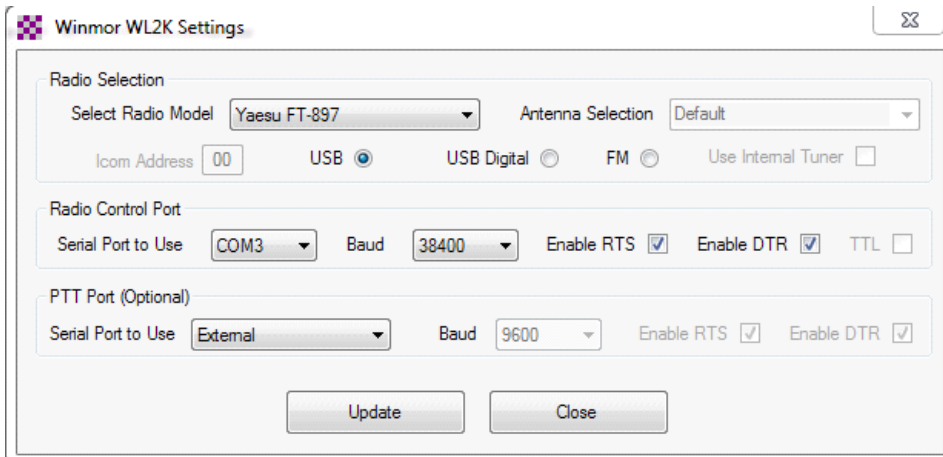
The Winmor Session dialog box will close and reopen.



Enter your **callsign** in the Registration Reminder.

Click **Remind Me Later**

On the Winmor Winlink 2000 Session dialog, Click **Setup**
Select **Radio Setup**



Winmor WL2K Settings

Radio Selection
 Select Radio Model: **Yaesu FT-897** Antenna Selection: **Default**

Icom Address: **00** USB USB Digital FM Use Internal Tuner

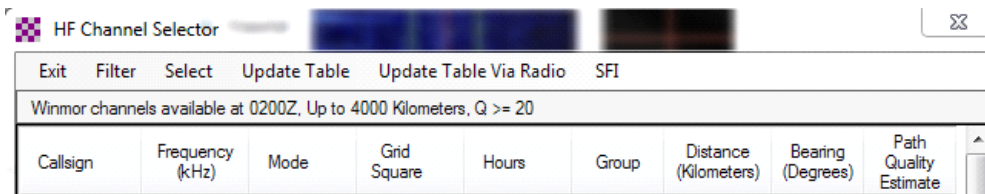
Radio Control Port
 Serial Port to Use: **COM3** Baud: **38400** Enable RTS Enable DTR TTL

PTT Port (Optional)
 Serial Port to Use: **External** Baud: **9600** Enable RTS Enable DTR

Update **Close**

Select your **radio type**, **Com port**, and Com port **speed**.
 Be sure you have the correct com port speed. This is a common mistake.
 Click **Update**

At this point, you are ready to load your channels.
 Click **Channel Selection**



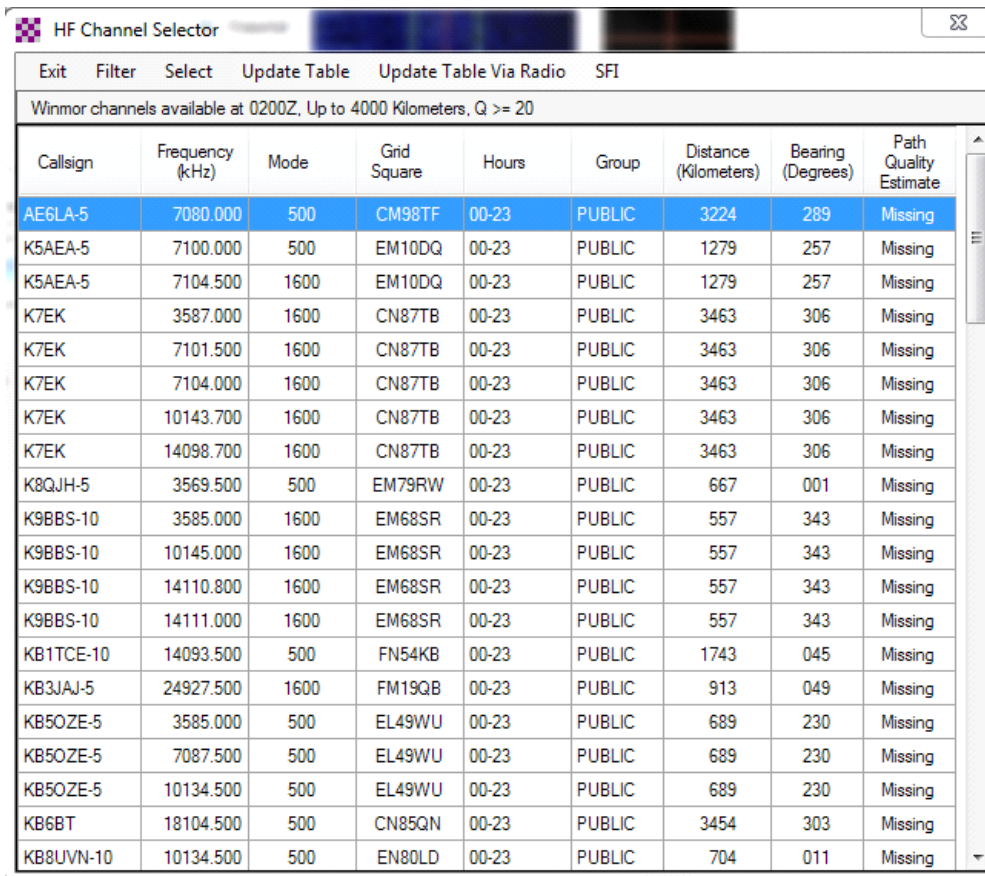
HF Channel Selector

Exit Filter Select Update Table Update Table Via Radio SFI

Winmor channels available at 0200Z, Up to 4000 Kilometers, Q >= 20

Callsign	Frequency (kHz)	Mode	Grid Square	Hours	Group	Distance (Kilometers)	Bearing (Degrees)	Path Quality Estimate
----------	-----------------	------	-------------	-------	-------	-----------------------	-------------------	-----------------------

Click **Update Table**. If you are connected to the internet, this will download a list of stations near you .



HF Channel Selector

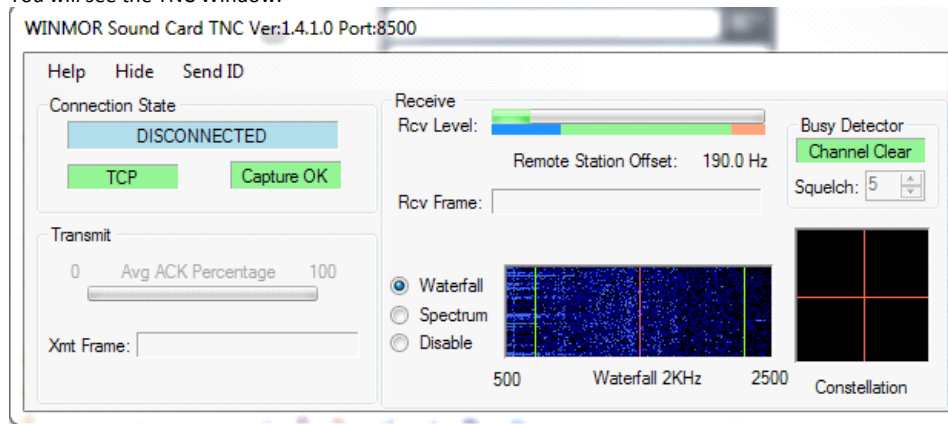
Exit Filter Select Update Table Update Table Via Radio SFI

Winmor channels available at 0200Z, Up to 4000 Kilometers, Q >= 20

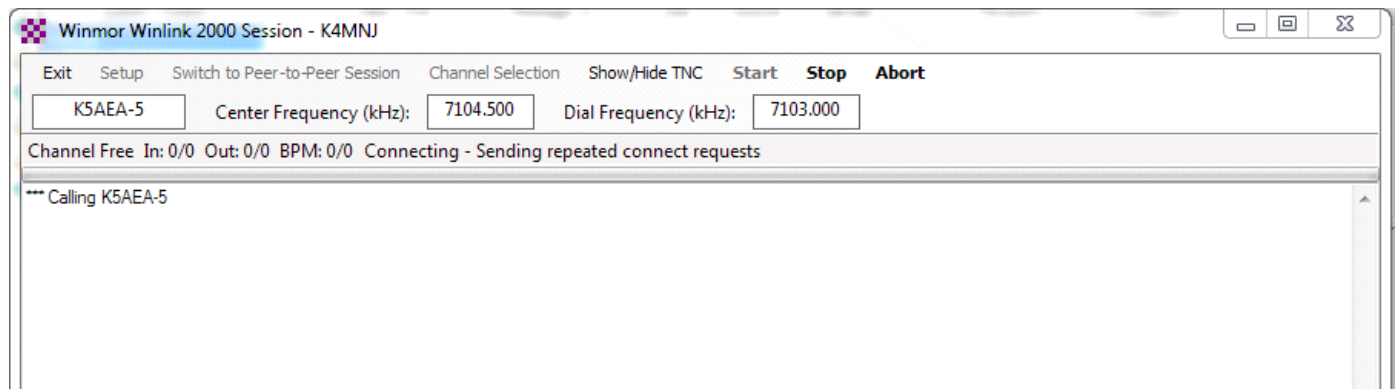
Callsign	Frequency (kHz)	Mode	Grid Square	Hours	Group	Distance (Kilometers)	Bearing (Degrees)	Path Quality Estimate
AE6LA-5	7080.000	500	CM98TF	00-23	PUBLIC	3224	289	Missing
K5AEA-5	7100.000	500	EM10DQ	00-23	PUBLIC	1279	257	Missing
K5AEA-5	7104.500	1600	EM10DQ	00-23	PUBLIC	1279	257	Missing
K7EK	3587.000	1600	CN87TB	00-23	PUBLIC	3463	306	Missing
K7EK	7101.500	1600	CN87TB	00-23	PUBLIC	3463	306	Missing
K7EK	7104.000	1600	CN87TB	00-23	PUBLIC	3463	306	Missing
K7EK	10143.700	1600	CN87TB	00-23	PUBLIC	3463	306	Missing
K7EK	14098.700	1600	CN87TB	00-23	PUBLIC	3463	306	Missing
K8QJH-5	3569.500	500	EM79RW	00-23	PUBLIC	667	001	Missing
K9BBS-10	3585.000	1600	EM68SR	00-23	PUBLIC	557	343	Missing
K9BBS-10	10145.000	1600	EM68SR	00-23	PUBLIC	557	343	Missing
K9BBS-10	14110.800	1600	EM68SR	00-23	PUBLIC	557	343	Missing
K9BBS-10	14111.000	1600	EM68SR	00-23	PUBLIC	557	343	Missing
KB1TCE-10	14093.500	500	FN54KB	00-23	PUBLIC	1743	045	Missing
KB3JAJ-5	24927.500	1600	FM19QB	00-23	PUBLIC	913	049	Missing
KB5OZE-5	3585.000	500	EL49WU	00-23	PUBLIC	689	230	Missing
KB5OZE-5	7087.500	500	EL49WU	00-23	PUBLIC	689	230	Missing
KB5OZE-5	10134.500	500	EL49WU	00-23	PUBLIC	689	230	Missing
KB6BT	18104.500	500	CN85QN	00-23	PUBLIC	3454	303	Missing
KB8UVN-10	10134.500	500	EN80LD	00-23	PUBLIC	704	011	Missing

Click a **station** near the top of the list.
 Close the form. If everything is working, the rig frequency will change to this frequency listed in the row selected.
 Listen for a while. You should hear modem sounds.
Tune your radio to this frequency.

You will see the TNC Window.



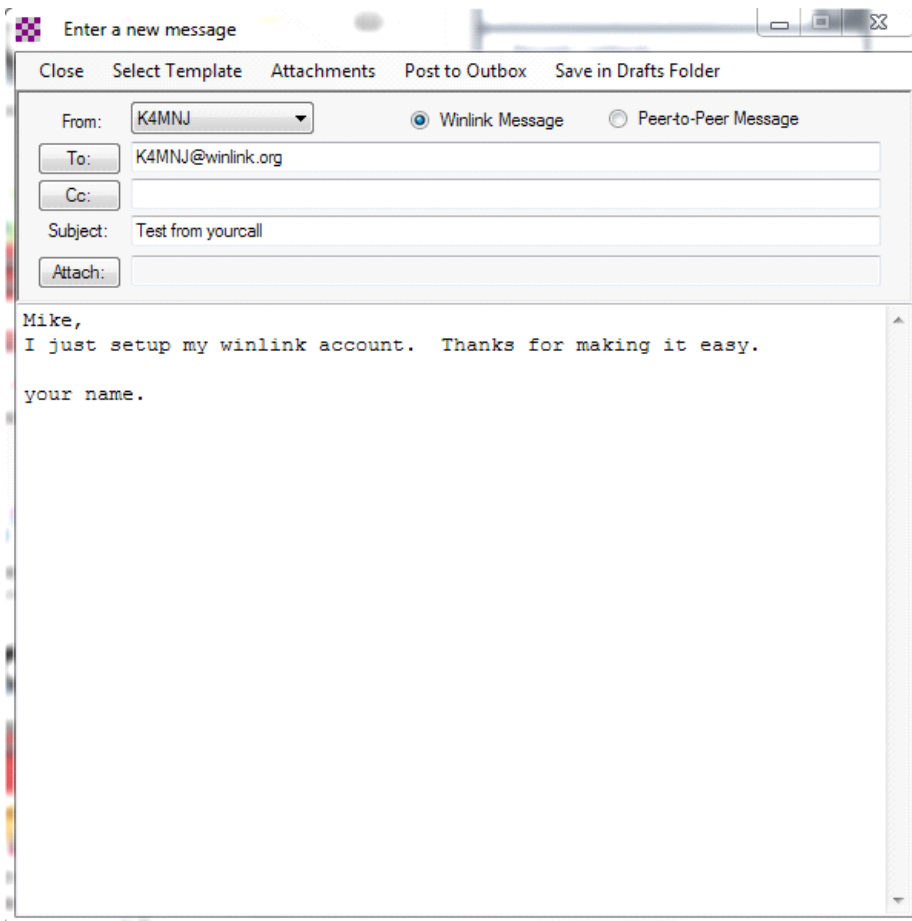
On the Session Window, Click **Start**



RMS Express will key the rig and start transmitting.
If this is working, you will see a response from the station. Watch this for a while until it disconnects.
Close the Session dialog. The TNC will automatically close too.

Compose a Message

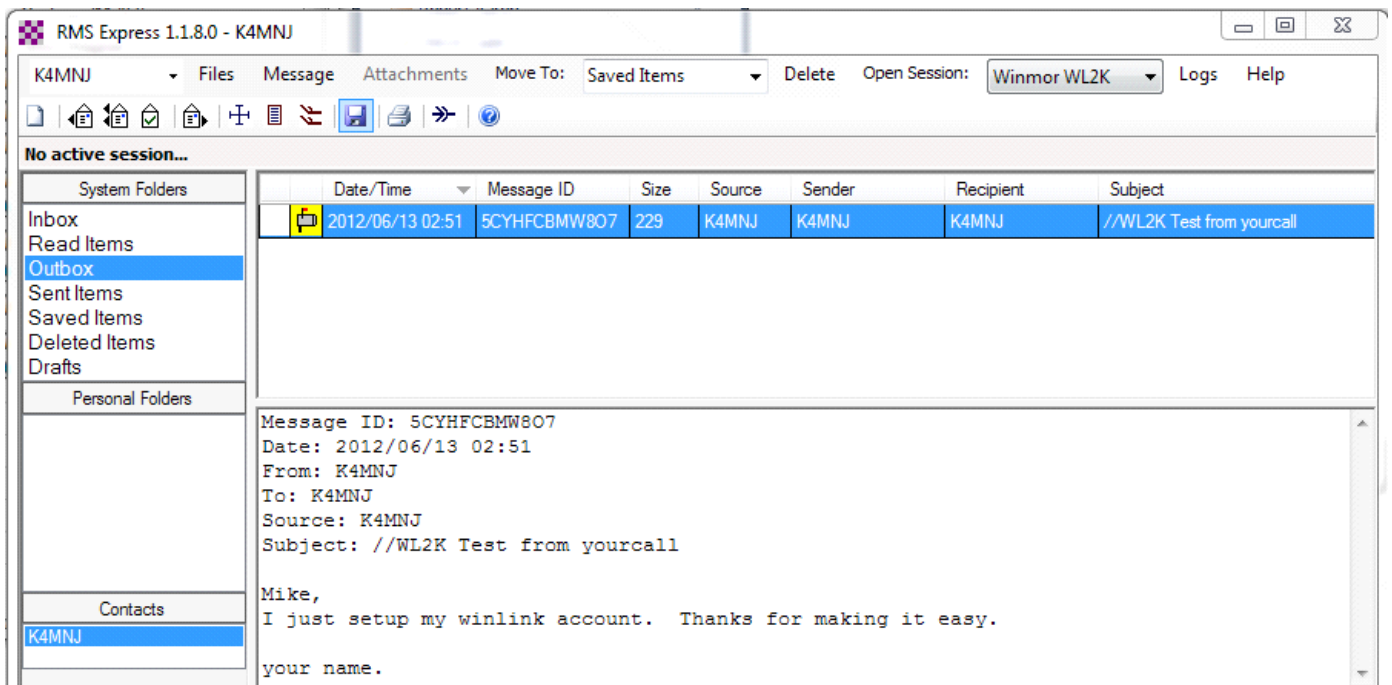
At the RMS Express main screen, click **Message**
Select **New Message**. A message template appears



Send your first message to me at **K4MNJ@winlink.org**. It is a good idea to send me a regular email at K4MNJ@ARRL.NET to let me know you are testing this. I don't check Winlink every day.

Update your To:, Subject:, and message fields
Click **Post to Outbox**

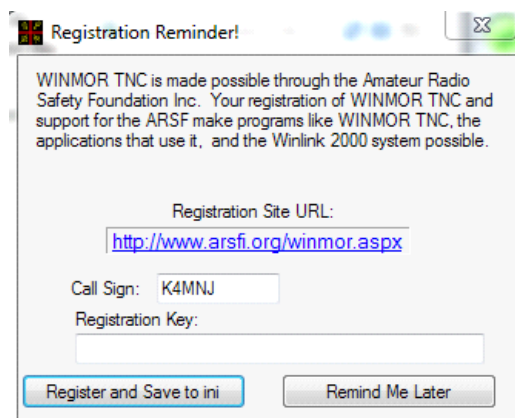
At the RMS Express main screen. **Click the Outbox folder** on the left.



Confirm your message was saved.

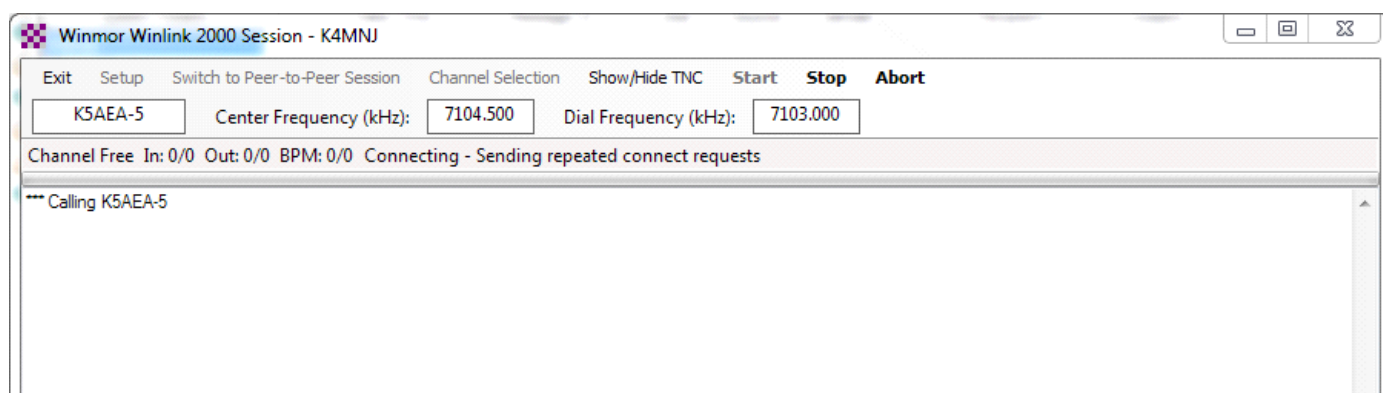
Send your Message

Confirm the Session type is **Winmor WL2K**.
Click the **Open Session** link.



Click **Remind Me Later**

On the Session Window, Click **Start**



If everything is working correctly, it will connect to the Winmor station, then send your message. It takes a few handshakes before the messages start to flow. Be patient and keep an eye on the notices shown in the window. If you see a lot of resend messages in the TNC window, you might need to select another station. Depending on propagation and band conditions, the first stations do not always reply.

73 de K4MNJ