



Wireless Infrared (IR) Keyboard WKB10WB1



Thank you for choosing the RCA Wireless Keyboard. You have selected a fine product designed to provide years of performance. Before attempting to use your wireless keyboard, please remove all parts from the box and carefully read the instructions.

1 Year Limited Warranty

Table Of Contents

Important Safeguards	2
Alternate Support Mode	3
Using The Keyboard	4
Battery Installation	4
Pointing & Operating Range	4
Keyboard Functions	5
Keyboard Features	7
Programming For TV	8
TV Code List	9
TV Operation	11
Troubleshooting	12
Warranty	13

Important Safeguards

CAUTIONS

- Your system is equipped with an IR control. The IR control complies with part 15 of the FCC Rules. Operation is subject to the following two conditions:
 - 1) The IR keyboard may not cause harmful interference.
 - 2) The IR keyboard must accept any interference received, including interference that may cause undesired operation.
- FCC Regulations state that unauthorized changes or modifications to this equipment may void the user's authority to operate it.

1. Read Instructions

All the safety and operating instructions should be read and understood before the appliance is operated.

2. Object and Liquid Entry

Never push objects of any kind into the keyboard, as these objects may touch dangerous voltage points or short out parts that could result in a electrical shock. Never spill liquid of any kind on the keyboard.

3. Damage Requiring Service

The appliance should be serviced by qualified service personnel when:

- Keyboard has fallen, or liquid has been spilled into the appliance; or
- The appliance does not appear to operate normally or exhibits a marked change in performance; or
- The appliance has been dropped, or the enclosure damaged.

4. Servicing

The user should not attempt to service the appliance beyond that described in the operating instructions. All other servicing should be referred to qualified service personnel.

5. Care and Cleaning

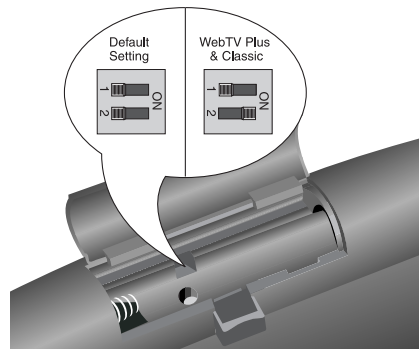
Use a soft cloth or dusting attachment of your vacuum cleaner to dust your keyboard. Plastic surfaces are easily scratched and with excessive use of oil-based furniture polishes, materials on the keyboard will accumulate more dust. A non-abrasive, anti-static cleaner / polisher is recommended.

6. Power Source

This product should be operated only from the type of power source indicated on the marking label or in the owner's manual.

Alternate Support Mode

Your keyboard is defaulted to operate the RCA receiver with UltimateTV service. If you have a WebTV Plus or WebTV Classic receiver, you must change the switch in the battery compartment as shown to operate these receivers.



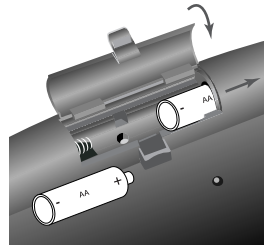
Using The Keyboard

Your keyboard supports many of the features of the UltimateTV and WebTV internet services. PIP functions are not provided on the keyboard.

Battery Installation

Your keyboard requires 2 new AA alkaline or zinc-carbon batteries. The battery life may vary depending on what type of AA batteries you are using.

1. Remove the battery compartment door.
2. Insert two AA batteries (included) matching the batteries to the (+) and (-) marks inside the battery case.
3. Replace the battery compartment door.



Pointing & Operating Range

Keyboard works on line of sight, so if there are any obstructions between the keyboard and the TV or receiver, it will seem like the keyboard isn't functioning correctly.



Keyboard Functions



These are the keys in order from left to right and top to bottom.

ON•OFF

Turns the TV or receiver on or off

TV
The TV key is used to change the device mode to operate your TV
Note: Most RCA, GE and ProScan TVs will not require programming. Check to see if your TV responds from the keyboard before you begin programming.

WEBTV

The WEBTV key is used to change the device mode to operate your receiver

TV•WEB

Switches the RCA receiver with UltimateTV service between UltimateTV and WebTV viewing

INPUT

Scrolls through available video input sources on your TV

MUTE

Mutes the TV volume

VOL- / VOL+

Turns TV volume down or up

CH- / CH+

Moves down or up one channel at a time

CLEAR & ESC

Removes the on screen display to return to normal viewing

REV, PLAY, FWD, REC, STOP & PAUSE

These keys operate the same as on your original remote

REPLAY

Jumps back 7 seconds and replays your video (UltimateTV function)

SKIP

Jumps ahead approximately 30 seconds of recorded video (UltimateTV function)

GOTO

Displays the URL entry toolbar so that you can type in a Web address to go to that page

Keyboard Functions Continued

SAVE

Saves the Web address in your Favorites folder

MAIL

Displays the e-mail screen. You have the option to send and receive e-mail

FAVS

Takes you directly to your Web Favorites list when you are on-line

SEARCH

Displays a Web Search screen

INFO

Provides additional information (such as Web page or viewing details for the Web site or UltimateTV program)

MY SHOWS

Displays the My Shows screen

HOME

Takes you to the TV/Web Home page

STANDARD KEYBOARD KEYS

- Number keys
- Alphabet keys
- Symbol keys

These keys function the same as any other computer keyboard

GUIDE

Displays the program guide. Press again to cycle through custom guides

BACK

Takes you back to the previous screen viewed

SCROLL UP / SCROLL DOWN

Scrolls up and down through Web or Guide content one page at a time

ARROWS

Moves the highlighted item on the screen

RETURN & OK

Selects the item highlighted on the screen

MENU & OPTION

Displays an options panel

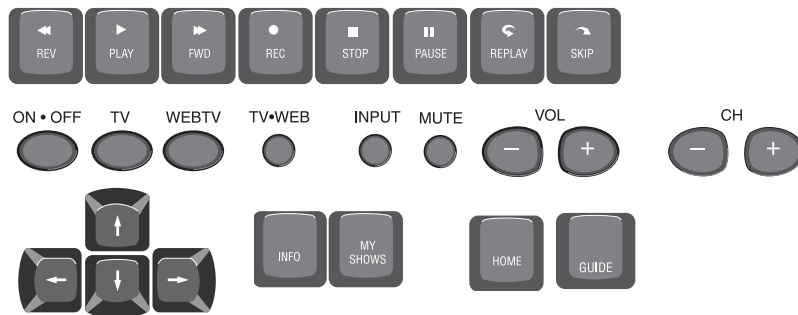
RECENT

Displays the list of most recently viewed Web pages when you are on-line

Keyboard Features

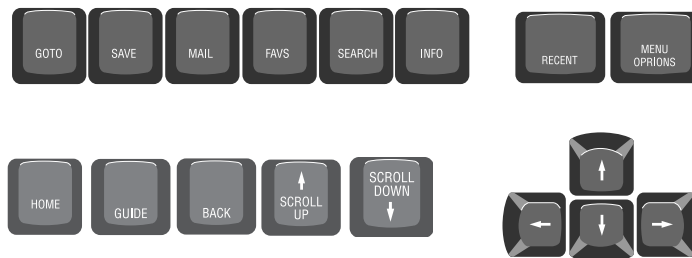
Basics for UltimateTV functions

The RCA receiver with UltimateTV service has a built-in hard drive that can store many hours of recorded digital video. Below are the most commonly used keys to operate the UltimateTV features. For more detail refer to the owners manual included with the receiver unit.



Basics for WebTV functions

The WebTV network service provides capabilities such as e-mail, searching the internet, and going to Web sites. Below are the most commonly used keys to operate the the WebTV features. For more detail refer to the owner's manual included with the receiver unit.



Programming For TV

You will need to program the wireless keyboard to work with your TV. Most RCA, GE & ProScan TVs will not require programming. Check to see if your TV responds to the keyboard before you begin programming. Use the following steps to program the keyboard.

- 1 Manually turn on the TV
- 2 Find the 3-digit code for your TV from the Programmable Codes listed on the next page. If more than one code is listed for your brand of TV, use the one at the beginning of the list.

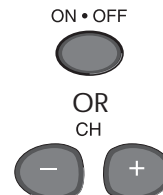
- 3 Press and **HOLD** the **TV** key



- 4 Enter the 3-digit code corresponding to a particular TV brand

- 5 Release the **TV** key

- 6 Check to see if the code works. Aim the keyboard at your TV and press the **ON • OFF** key. If the TV responds, try the **CH +/-** buttons.



Note: Your TV must have infrared (IR) remote control receiving capability in order to be used with the wireless keyboard.

TV Code List

Admiral	116, 234	Emerson	001, 012, 014, 083
Advertura	235	084, 085, 086, 087, 089, 090
Aiko	126	094, 118, 120, 123, 131, 132
Akai	063, 091, 117	133, 134, 135, 136, 137, 138
Alba	033	139, 140, 141, 142, 143, 144
Alleron	151	145, 146, 147, 148, 149, 150
A-Mark	029	151, 152, 211, 230, 236, 237
Amstrad	090	260, 270
Amtron	145	Envision	108, 118, 120
Anam	028, 029, 083	Etron	091
.....	105, 145	Fisher	050, 082, 153
Anam National	248, 249, 269	154, 155, 230
AOC	014, 029, 099, 108	Formenti	035
.....	109, 118, 119, 120, 251	Fortress	039
Archer	029	Fujitsu	015, 089, 151
Audiovox	029, 145	Funai	015, 083, 089, 145, 151
Bauer	035	Futuretec	145
Belcor	118	Futuretech	015, 083
Bell & Howell	116, 183, 230	GE	000, 014, 020, 080, 081, 084
Bradford	145	102, 105, 106, 111, 115, 118
Brockwood	014, 118	120, 130, 156, 187, 231, 232
Candle	014, 095, 097, 098	239, 269
.....	108, 118, 120, 121, 235	Genexxa	033
Capehart	014	Gibraltar	118
Celebrity	117	Goldstar	014, 052, 078, 079
Circuit City	014	094, 097, 109, 118, 119, 120
Citizen	018, 094, 095, 096	123, 128, 129, 159, 160, 161
.....	097, 098, 101, 108, 118	228
.....	120, 121, 126, 145, 199	Granda	003, 014
.....	235, 236	Grand	014
Colortyme	014, 118, 120	Grandiente	003
.....	122, 254	Grundy	045, 151
Concerto	097, 118, 120	Hallmark	014, 118, 120
Contec	049, 083	Harvard	145
Contec/Cony	123, 124, 145	Hinari	089
Craig	015, 083, 145	Hitachi	003, 010, 024, 071
Crown	094, 145	072, 073, 074, 075, 076, 077
Curtis Mathes	094, 101, 108	094, 097, 118, 120, 123, 124
.....	115, 118, 120, 125, 199, 230	163, 164, 218, 221, 222, 223
CXC	083, 145	224, 237, 253
Daewoo	002, 091, 092	Hitachi Pay TV	273
.....	094, 109, 118, 119, 120	IMA	145
.....	126, 127, 213, 214, 256	Infinity	064, 165
Daytron	014, 118, 120	Janeil	235
Dimensia	115	JBL	064, 165
Dixi	029, 052, 091	JC Penny	046, 081, 094, 101
Dumont	014, 118	108, 109, 111, 115, 118, 119
Electroband	117	120, 121, 130, 156, 161, 166
Electrohome	003, 005, 094	167, 174, 187, 199, 239, 255
.....	118, 120, 128, 129, 130, 269	JCB	117
Elta	091	Jensen	070, 118, 120

TV Code List Continued

JVC.....	066, 067, 068, 069, 123	Orion.....	015, 142, 260
.....	124, 163, 168, 169, 229, 240	Osaki.....	034
Kawasho.....	065, 117, 118, 120	Panasonic.....	006, 011, 012, 013, 060
Kenwood.....	108, 118, 120, 128, 129	064, 104, 105, 106, 165, 263
Kloss.....	036, 098, 235	265, 269
Kloss Novabeam.....	170, 171, 241	Philco.....	036, 095, 108, 109, 118
KTV.....	083, 084, 085, 094, 145	119, 120, 121, 123, 128, 165, 170
.....	172, 236	171, 176, 178, 184, 241, 267, 269
Lloyds.....	014	Philips.....	052, 064, 118, 121, 123, 128
Loewe.....	165	165, 170, 171, 176, 177, 186
Logik.....	183, 266	187, 188, 269
Luxman.....	097, 118, 120	Pilot.....	118
LXI.....	025, 030, 047, 050, 064, 111	Pioneer.....	059, 077, 112, 118, 120
.....	115, 120, 153, 165, 173, 174	189, 190, 237, 243, 264
.....	175, 230, 239	Portland.....	094, 109, 118, 119
Magnavox.....	004, 036, 064, 095, 099	120, 126
.....	108, 118, 120, 121, 128, 165, 170	Price Club.....	199
.....	171, 176, 177, 178, 184, 188, 215	Proscan.....	000, 111, 115, 239
.....	216, 217, 241, 267	Proton.....	014, 026, 094, 103, 118
Majestic.....	183	120, 123, 191, 244
Marantz.....	165, 052, 064, 108, 118, 120	Pulsar.....	113, 118
.....	165, 179	Quasar.....	011, 105, 106, 172, 263, 269
Matsui.....	091	Radio Shack.....	034, 037, 083, 094
Megatron.....	014, 120	115, 118, 120, 123, 145, 153
Memorex.....	014, 050, 091, 116	192, 230
.....	120, 182, 183, 230, 266	RCA.....	000, 016, 017, 025, 053, 054
MGA.....	014, 062, 108, 109,	055, 056, 057, 058, 077, 102, 109
.....	110, 118, 119, 120, 128, 129, 130	111, 115, 118, 119, 120, 128, 193
.....	155, 180, 182	194, 196, 197, 239, 245, 256, 269
Midland.....	054, 151, 171	273, 274
.....	172, 181	Realistic.....	050, 118, 120, 123, 145
Midland.....	239	153, 192, 230
Minutx.....	156	Saisho.....	090, 091
Mitsubishi.....	007, 014, 027, 061, 062	Sampo.....	108, 118, 120
.....	063, 109, 110, 118, 119, 120, 128	Samsung.....	276, 008, 014, 034, 052
.....	129, 130, 155, 180, 181, 182, 212	091, 094, 097, 101, 108, 109, 118
Motorola.....	234, 269	119, 120, 123, 125, 127, 128, 129
MTC.....	014, 097, 101, 108, 109	198, 199, 255, 275
.....	118, 119, 120, 199	Sansui.....	260
Multitech.....	145	Sanyo.....	049, 050, 051, 082, 118
NAD.....	014, 030, 112, 120, 173	153, 154, 180, 200, 230
.....	174, 243	SBR.....	052
National.....	013, 105	Schneider.....	052
NEC.....	023, 097, 100, 107, 108, 109	Scotch.....	120
.....	118, 119, 120, 129, 185, 254, 269	Scott.....	083, 087, 089, 094, 118, 120
Nikkai.....	033, 034	123, 132, 142, 145, 151
Nikko.....	014, 120, 126	Sears.....	009, 014, 030, 040, 041, 042
Normande.....	276	043, 044, 045, 046, 047, 050, 051
NTC.....	126	082, 089, 097, 111, 118, 120, 124
Onwa.....	083, 145	128, 129, 151, 153, 154, 155, 169
Optimus.....	243	173, 174, 201, 202, 230, 239
Optonica.....	037, 039, 192, 234		

TV Code List Continued

Seimitsu	014	Teletext	091
Sharp	021, 022, 037, 038, 039, 049	Tera	103, 244
.....	094, 118, 120, 123, 137, 192	Thomas	014
.....	203, 205, 210, 234	Thompson	005
Shogun	118	TMK	014, 097, 118, 120
Siemens	049	Toshiba	019, 030, 046, 050, 101
Signature	116, 183, 266	153, 173, 174, 199, 201, 230, 255
Simpson	121	Totevision	094
Sony	114, 117, 259, 268, 272	Toyomenko	014
Soundesign	014, 083, 095, 118	Universal	081, 156, 187
.....	120, 121, 145, 151	Vector Research	108
Spectricon	029, 099	Victor	069, 169, 240
Squareview	015	Video Concepts	063
SSS	083, 109, 118, 145	Vidtech	014, 109, 118, 119, 120
Starlite	145	Viking	098, 235
Supra	097	Wards	037, 081, 089, 102, 108, 109
Supre-Macy	098, 235	116, 118, 119, 120, 128, 132, 151
Supreme	117	156, 165, 170, 171, 176, 177, 183
Sylvania	035, 036, 064, 095, 108	184, 187, 188, 192, 208, 209, 266
.....	118, 120, 121, 128, 165, 170	267, 268, 270
.....	171, 176, 177, 178, 184, 188	Yamaha	108, 109, 119, 120
.....	207, 241, 267	128, 129
Symphonic	015, 145, 270	York	014
Tandy	033, 039, 234	Zenith	113, 118, 183, 226
Tatung	105, 237, 269	227, 261, 266, 271
Technics	106	Zonda	029
Techwood	097, 118, 120, 157		
Teknika	031, 032, 083, 089, 094		
.....	095, 096, 097, 098, 101, 109		
.....	110, 118, 119, 120, 121, 123		
.....	124, 126, 145, 151, 177, 182		
.....	183, 199, 266		

TV Operation

The ON•OFF key is used to turn the programmed TV ON or OFF. When the keyboard is programmed to a RCA, GE, or ProScan TV, the TV key will also turn the TV ON.

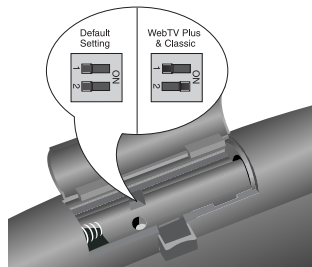


Note: The INPUT key allows you to scroll through available video input sources.

Troubleshooting

If the wireless keyboard is not working properly, check the following:

- Make sure you're pointing the keyboard at the front of the device you want to control.
- The wireless keyboard may need to be programmed to operate your TV.
- Check operation of the keyboard at a shorter distance to the receiver or TV.
- Make sure there is a clear line of sight between the keyboard and the TV or receiver.
- Make sure the batteries are inserted correctly.
- The batteries may be weak. Replace all batteries with new batteries. For best results, use alkaline batteries.
- Check for electrolyte leakage in the battery compartment. If leakage has occurred, wipe the affected area of the battery compartment with a clean, dry cloth. Replace the old batteries with new ones.
- If the channel keys are not working, press TV or WEBTV depending on which device you are trying to control.
- Your keyboard is defaulted to operate the RCA receiver with UltimateTV service. If you have a WebTV Plus or WebTV Classic receiver, you must change the switch in the battery compartment as shown to operate these receivers.



Limited 1 Year Warranty

Thomson Consumer Electronics, Inc. warrants that for 1 year from date of purchase, it will replace this product if found to be defective in materials or workmanship. Return it postage prepaid to the Product Exchange Center address for prompt, no charge replacement with a current equivalent. This replacement is Thomson Consumer Electronics, Inc.'s sole obligation under this warranty. Thomson Consumer Electronics, Inc. will not be responsible for any incidental or consequential damages, or for any loss arising in connection with the use or inability to use this product. Some states do not allow the exclusion or limitation of incidental or consequential damages, so the above limitation or exclusion may not apply to you. This warranty excludes defects or damage due to misuse, abuse, or neglect. This warranty gives you specific legal rights, and you may also have other rights, which vary from state to state.

UltimateTV, the UltimateTV logo, WebTV, and the WebTV logo are either registered trademarks or trademarks of Microsoft Corporation in the United States and/or other countries. Logos shown are registered trademarks of respective companies.



©2000 Thomson Consumer Electronics, Inc.
Product Exchange Center
11721 Alameda Ave.
Socorro, TX 79927

PWKB10WB1 Rev1100
Trademark(s) ® Registered Marca(s) Registrada(s)
Made in China



Other RCA Accessories

Several accessories are available that will enable you to expand your home video system. To order any that are listed below or to find out what other accessories are available contact your local RCA dealer, or call 1-800-338-0376.

Universal Remote Control (RCU800)

A full featured remote that offers the versatility of operating both video and audio components. It controls up to 8 components and includes code search, advanced PIP and menu controls, DBS satellite system compatibility and a toll-free consumer help line.



\$39.95

Surge Suppressor (SCP40)

Get full surge protection for your phone line, eliminate interference from noise entering through power lines and protect your valuable equipment from most harmful power spikes. 6 heavy duty grounded outlets and in/out phone line jack.



\$19.95