



Corrections for May 2021
with the compliments of Adlard Coles Nautical

REEDS

Nautical Almanac 2021

Corrections to 29th April 2021 include Admiralty Notices to Mariners Week 17/21

EDITORIAL NOTES

1. Corrections to the above Almanacs are placed on www.reedsalmanacs.co.uk at the following intervals: In early January (covering the period since going to press in June); and thereafter at the start of each month from February through to June. There is no repetition, except where an earlier correction is modified by later data.
2. We thank those who have contributed helpful suggestions, all of which are considered and, if feasible, included. Please tell the Editors as soon as possible of any corrections to the Almanac(s) thought to be necessary, particularly as a result of experience at sea.

3. Contents

Pages

2 Reeds Update Amendment Form

3–5 Reeds Nautical Almanac



THE SOUTH COAST
BOAT SHOW
MDL MARINAS
guided by **Raymarine**

7-9th May 2021 • Ocean Village Marina • Book Tickets at mdlmarinas.co.uk/scbs

Adlard Coles Nautical
50 Bedford Square
London, WC1B 3DP

Tel 0207 632 5600
Fax 0207 6732 5800
www.reedsalmanacs.co.uk

CORRECTIONS TO 2021 REEDS NAUTICAL ALMANAC

CORONAVIRUS As restrictions are slowly removed. There will be pressure on harbours and marinas and it is invaluable to check ahead for availability and the latest guidance - especially with Easter and better weather on the horizon. For example the Isle of Man has experienced a recent spike in infections. Please be mindful of the condition of your boat and any outstanding maintenance as the RNLI, MCA and other services do not need unnecessary call-outs at this time.

CHAPTER 9, HARBOURS, COASTS & TIDES

AREA 2, CENTRAL S ENGLAND

199 (RH Col), CROSSING THE ENGLISH CHANNEL (CENTRAL PART), *Ed Note: The seasonal yellow buoy, often seen N of the shipping lanes, 207° St Catherine's Pt 16M is not being replaced.*

211, CHRISTCHURCH, Navigation, *Ed Note: Recent reports indicate that the depths at the entrance to Christchurch Harbour are reasonably close to those indicated. However, the approach to the entrance is at this time over a cable further south than charted and closer to the tip of the sandy spit which protects the 'Run'.*

224, COWES/R MEDINA, TIDAL PREDICTIONS FOR APPRECIATING COWES TIDAL STREAMS, (RH Col), to reflect new service, after last line add: live met and tidal data is available from CHC at: www.cowesharbourcommission.co.uk/cowes_weather_station

233, RYDE, Lights and Marks, *Ed Note: A wave monitoring instrument has been established on the seabed until September 5ca S of N Sturbridge buoy. It is marked by a yellow guard buoy, Fl.Y.5s. Small craft are requested to keep 50m clear.*

AREA 4, E ENGLAND

320, RIVER STOUR, Communications, line 1, Dr ☎, amend: 879400.

321, RIVER ORWELL, Facilities, para 2, PIN MILL, line 2, delete: ☐ LPG ⚠.

328, LOWESTOFT, Navigation, after last para, insert new paragraph: **Gull Wing Bridge** is being built across Lake Lothing until 2023. A 32m wide chan will be maintained with details at ABP Lowestoft.

AREA 5, NE ENGLAND

343, BLAKENEY HARBOUR, Navigation, *Ed Note: Latest pilotage information published April 2021:*

- *Entry to the harbour should not be undertaken beyond 2hrs either side of high water on Blakeney Bar.*
- *Enter the harbour to the West of the Hjordis wreck beacon in an ESE direction heading for port hand buoy no. 1.*
- *Pass close to Hjordis wreck beacon, leaving it to port, continuing to port hand buoy no. 1.*
- *After passing close to port hand buoy no. 1, turn SSW and continue passing close to starboard buoy no. 2*
- *Then continue SSW and pass between buoys 4 and 5 and then onward following the buoys into the harbour.*

Vessels entering the harbour for the first time are strongly advised to call BHA for latest pilotage information as follows:

Neil Thompson: 07929 181138 or

Henry Archer: 07786 092405 or

Will Darby: 07795 463943

351, RIVER HUMBER, Facilities, para 3, Meridian Quay Marina, line 2 mob amend: 07415 2096592.

Chartlet, close W of Spurn Hd, Hawke Lt float, characteristic, amend: RGR, *Hawke, Fl(2+1)G.6s. Ed Note: Hawke has been changed to a preferred channel to port mark LNTM 42/21.*

AREA 8, NW SCOTLAND

469, LOCH MELFORT, Chartlet, N of Kimelford Yacht Haven, Sgeir na Ceardaich, delete: bn with R topmark, substitute: unlit PH buoy.

AREA 9, SW SCOTLAND

476 (LH Col), SOUND OF JURA, CRAIGHOUSE, L SWEEN and GIGHA, after line 7, Gamhna Gigha ✕, insert new line: Bhanarach Rocks ✕ Q (3) 5s; 55°40'·73N 05°43'·32W.

AREA 11, SW ENGLAND

568, PADSTOW, Shelter, lines 2-3, delete: or ⚓ close N in 1-5m LWS.

Navigation, tinted box, bullet pt 1, LW±1½, amend: LW±2.

Communications, line 2, Ferry ☎, amend: 07773081574.

AREA 13, N IRELAND

621 (RH Col), RATHLIN ISLAND, line 2, Rathlin W ☆ range, amend: 18M.

AREA 16, NETHERLANDS & BELGIUM

735, ROTTERDAM, Facilities, para 5, City Marina, lines 1-3, Erasmus bridge VHF Ch18 amend 20.

745, ZEEBRUGGE, Chartlet, [paste in new chartlet on page 4](#) showing new buoyage designation, removal of wind turbines and ongoing changes within Albert II-dok.

AREA 20, NORTH BRITTANY

858 (LH Col), ÎLE DE BRÉHAT, line 1, Le Paon ✕, R/G range, amend: 6M.

860 (LH Col), ARGENTON to L'ABER-ILDUT, line 8, delete in toto, substitute: Le Lieu ⚓ 5m, R twr, 48° 28'· 25N 04° 46'· 66W, and associated ⚓ Fl R 2·5s 4M, 48°28'·22N 04°46'·74W.

877, L'ABER-ILDUT, Navigation, lines 5-6, delete Le Lieu... to see, substitute: Le Lieu PHM bcn twr, 5m (unlit), and PHM buoy, Fl R 2·5s 4M close SW. *Ed Note: Le Lieu bcn, destroyed by a storm in 2019, has now been rebuilt but is no longer lit. The PHM buoy close SW, retains the light chara Fl R 2·5s 4M at 48°28'·22N 04°46'·74W.*

878, Lights and marks, line 3, after: Le Lieu bcn, delete: Fl R 2·5s 4M, substitute: and associated PHM buoy, Fl R 2·5s 4M.

Facilities, last line, Ferry: amend: Ferries: Foot/bikes across river. Offshore ferry to Ouessant.

878, L'ABER-ILDUT, Chartlet, [paste in new chartlet on page 5](#) showing Le Lieu bcn restored. *Ed Note: this updates the chartlet issued in January 2021 update.*

AREA 21, SOUTH BRITTANY

899 (RH Col), PLATEAU DES BIRVIDEAUX (6M NNW of Belle Île) ⚓ Fl (2) 6s, at end of entry delete: MMSI number.

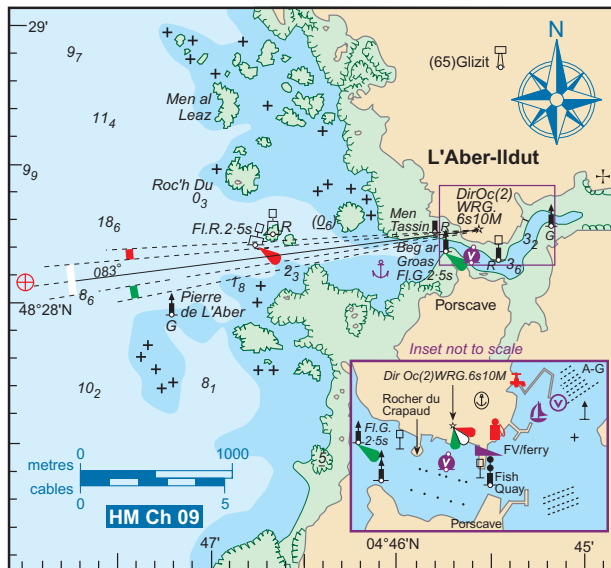
901, (LH Col), PLATEAU DU FOUR/BANC DE GUÉRANDE, line 7, Le Croisic ⚓, delete entry in toto, substitute: Le Croisic ⚓, Mo(U)15s R Lt 14m 5M, and Wavegem electricity generator) Oc(3)Y 10s, (both floating), 2x SPM Fl (5) Y 20s 4x SPM Fl Y 4s centred on 47°14'·37N 02°46'·61W. 992271051.

AREA 23, NORTH & NORTH WEST SPAIN

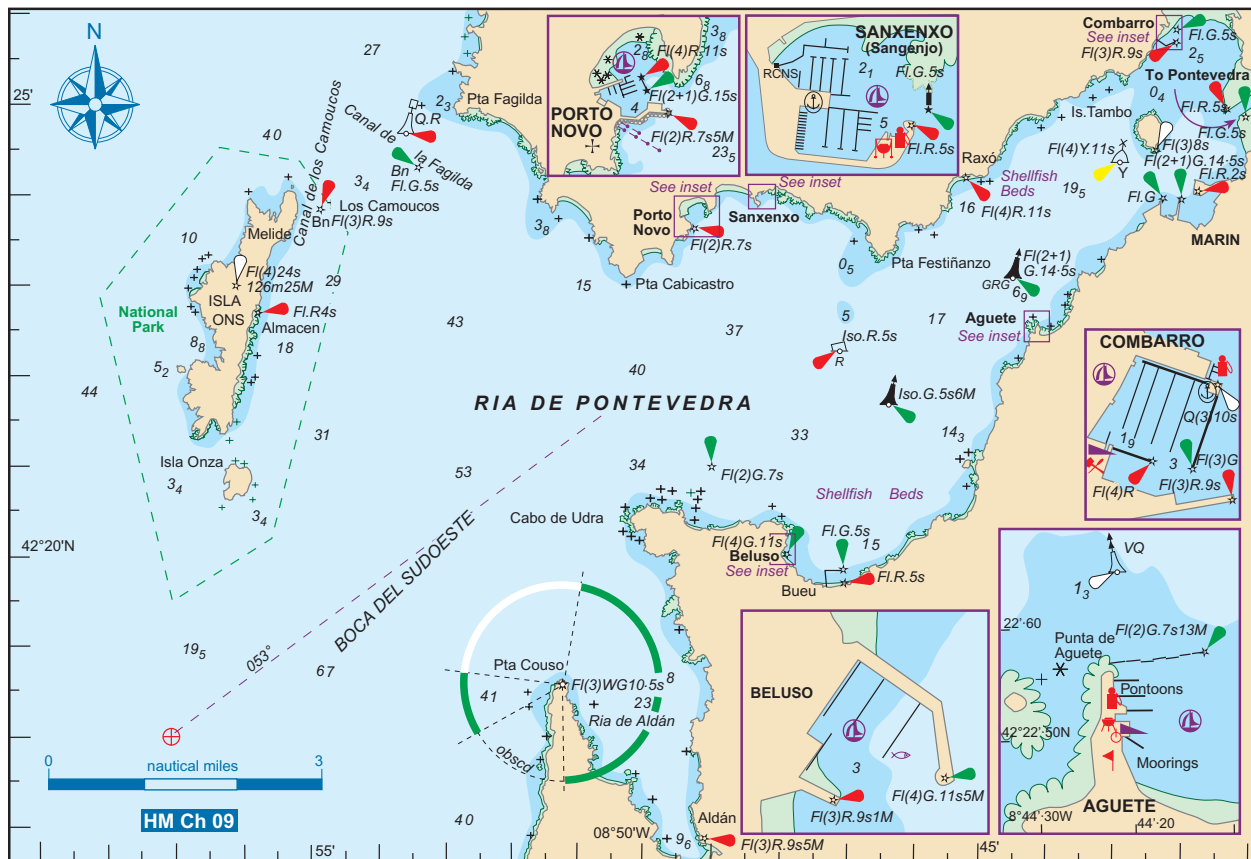
993, RIA DE PONTEVEDRA, Chartlet, [paste in new chartlet on page 5](#) showing location of new SHM buoy, Iso R 5s 6M, in SW approach.

AREA 25, SOUTH WEST SPAIN, GIBRALTAR & MOROCCO

1030, BAY OF CADIZ, Chartlet, just above bottom centre, legend: WIP 2018/19, amend: 2021/22.



878, L'ABER-ILDUT



993, RIA DE PONTEVEDRA