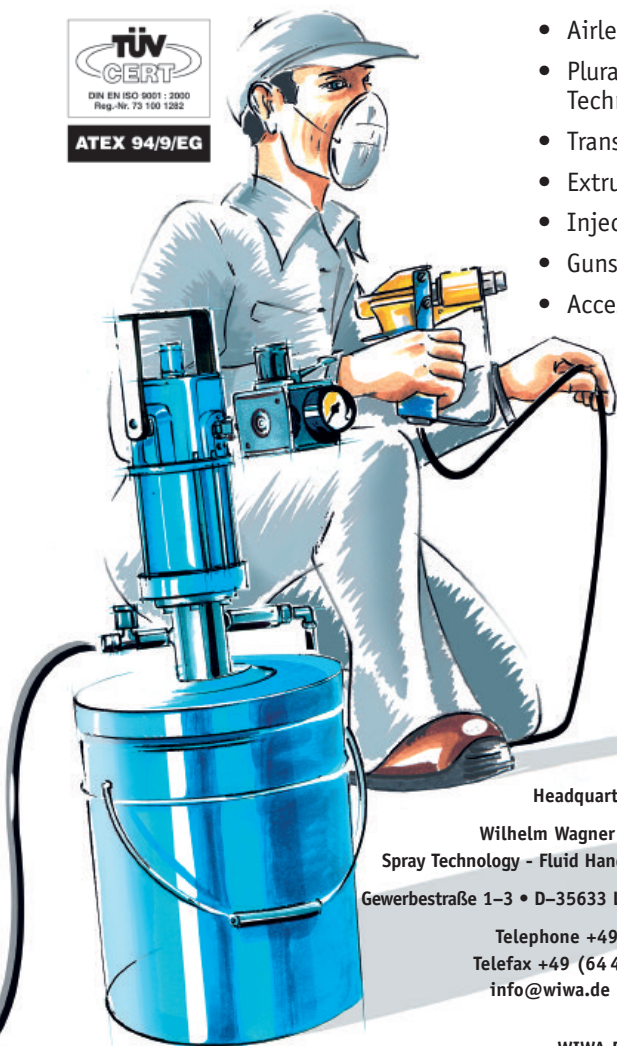


PRODUCT RANGE

QUALITY PRODUCTS ENSURE SUCCESS



- Airless
- Plural Component Technology
- Transfer Pumps
- Extrusion
- Injection
- Guns
- Accessories

Headquarter & Production

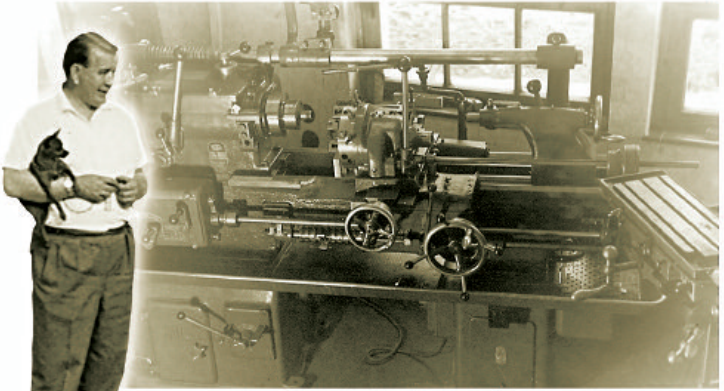
Wilhelm Wagner GmbH & Co. KG
Spray Technology - Fluid Handling Equipment
Gewerbestraße 1-3 • D-35633 Lahnu, Germany

Telephone +49 (64 41) 6 09-0
Telefax +49 (64 41) 6 09-50/-58
info@wiwa.de • www.wiwa.de

WIWA Partnership USA

WIWA LP • 107 N. Main St. • P.O. Box 398, Alger, OH 45812
Phone: +1-419-757-0141 • Fax: +1-419-549-5173 • Toll Free: +1-855-757-0141
sales@wiwalp.com • www.wiwalp.com

Founding years



In 1946 Wilhelm Wagner purchased his first lathe, beginning a second occupation. In 1950, Wilhelm Wagner KG was founded and registered with the local Chamber of Commerce. Wilhelm Wagner quit his job as a precision mechanic at Leitz in 1955 to allow him to focus all his energies on his own growing company.

WIWA today





WIWA is a solid, medium-sized company with more than 50 years of history and a world-wide distribution network. In addition to the two facilities in Germany with 90 employees, WIWA has been able to expand its international presence with own employees on five continents.

The experience gained from five decades of constant innovation, the strive to offer the highest quality products while maintaining an economical manufacturing process and the untiring efforts of everyone involved has provided the basis of our fifty year success story.

"The wheel of time continues to turn"

We know, however, that we cannot afford to rest on our laurels. Only those who keep closely attuned to market developments and remain flexible to change will survive in today's fast paced society.

For this reason, WIWA will continue to develop new products after our 50th anniversary, the new PROFIT Series representing only one of them.

"WIWA, because quality has a name!"

Our products have often been copied, but no one has reached the same quality. The original has always been far ahead of the copies. It has always been, is now and will always be this way.

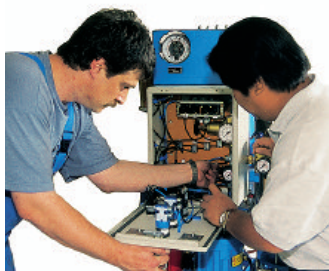
"Impossible is not part of our vocabulary"

This is a motto we believe deeply in and WIWA has always had an open ear for the special requirements of our customers.

A handwritten signature in blue ink that reads "Heidrun Wagner-Turczak".

Heidrun Wagner Turczak
– General Manager –

A high-quality product must be accompanied by expert advice. Our highly motivated staff, as well as national and international product training, ensures success.



Technical training for international staff



Technical training in Korea



First technical training in China



Seminar on lacquering procedure in the furniture industry



Seminar for joiners and carpenters at the vocational school for wood workers in Bad Wildungen



Training in Indonesia

Ideal for trade and industry. Compact, powerful and economical. WIWA Airless and Air Combi paint spraying equipment.



Applications: economical, environmentally-friendly spray technology for paint and finishing shops, carpentry shops, the furniture industry and the machine and auto industries.

Compatible materials: oil and grease, high build varnish, primer, sprayable spackle, sprayable paint and lacquer, two component material, textured paint, hammer-tone paint, water soluble materials and waterborne lacquer.

Mounts available: a variety of mounting versions such as pail, tripod and cart or wall mounting ensure high flexibility in application. The PROFIT with feed funnel is ideally suited for repairs and applications using small quantities of paint.

Pump versions: carbon steel, corrosion resistant steel and stainless steel versions assure the highest individuality in different application areas.

For material with low to medium viscosity		
Pressure ratio	Output*	Model
10:1	14	3010 N/RS
22:1	14	3022 N/RS
33:1	14	3033 N/RS
10:1	27	4210 N/RS
22:1	27	4222 N/RS
33:1	27	4233 N/RS

* ccm/cycle

WIWA paint spraying equipment with maximum performance at minimum cost for trade and industry.



Applications: ideal for use in carpentry shops, furniture industry, paint and finishing shops, machine and auto industry, steel and building fabrication, the steel working industry, automatic or manual painting facilities, ship coatings, rail car production and repair work on deck.

Compatible materials: application of primer, sprayable spackle, sprayable paint and lacquer, two component and tar-epoxy paints (with high viscosity and coarse pigmentation), textured paint, hammer-tone paint, zinc coatings, rust protective and micaceous iron oxide paints, water based paints (RS), clear coat paints and high-build varnishes.

Mounts available: a variety of mounting versions such as cart, cart with feed funnel, tripod and wall mounting allow maximum flexibility in application.

Pump versions: carbon steel, corrosion resistant steel and stainless steel versions assure the highest individuality in different application areas.

For material with low to medium viscosity		
Pressure ratio	Output*	Model
30:1	40	6530 N/R/RS
18:1	72	11018 N/R/RS
32:1	72	11032 N/R/RS

For lacquers and coating material with high viscosity		
Pressure ratio	Output*	Model
52:1	40	6552 N/R/RS

* ccm/cycle

* ccm/cycle

WIWA high-performance Airless paint spraying equipment.



Applications: large surfaces and high-build coatings such as in the ship-building and offshore industry, structural and corrosion protection, as well as in paint circulation systems and industrial coating lines, steel and building fabrication, railcar production, paint and finishing shops, industrial coatings, sprayable insulation, fire protective coatings and as a transfer pump for external feed sources

Compatible materials: application of abrasive material (with low to high viscosity), fire protective coatings, glassflake, insulation and high-build materials, anti-fouling and cold bitumen, solvent-free and low solvent paints, materials with short fibers, sprayable paints and lacquers, plural component and tar-epoxy paints, zinc primer and micaceous iron oxide paints (with high viscosity and/or coarse pigmentation).

Mounts available: cart, wall mounted, cart with lift.

Pump versions: carbon steel and corrosion resistant steel for a wide variety of coating requirements in various areas of application.

For material with low and medium viscosity		
Pressure ratio	Output*	Model
26:1	138	24026 N/R
23:1	153	28023 N/R
32:1	235	38032 N/R
42:1	235	38042 N/R
24:1	306	44024 N/R
32:1	306	44032 N/R

* ccm/cycle

For material with high viscosity		
Pressure ratio	Output*	Model
53:1	138	24053 N/R
71:1	138	24071 N/R
48:1	153	28048 N/R
64:1	153	28064 N/R

* ccm/cycle

WIWA high-performance Airless paint spraying equipment for large surfaces, high-build coatings and automatic coating systems.



Applications: large surfaces and high-build coatings as in the shipbuilding and offshore industry, structural and corrosion protection, as well as paint circulation systems and industrial coating lines, fire protective coatings, steel and building fabrication, railcar production, for industrial coatings, sprayable insulation and in automatic painting facilities.

Compatible materials: application of glasflake, anti-fouling, cold bitumen, low solvent and solvent free paints, material with short fibers, sprayable lacquers and paints, plural component and tar-epoxy paint, zinc primer, micaceous iron oxide paint (with high viscosity and/or coarse pigmentation), abrasive material, fire protective materials and high-build materials.

Mounts available: cart, cart with lift, wall-mounted, agitator and mounting kit for hot spray.

Pump versions: corrosion resistant steel. Stainless steel version upon request.

For material with low to medium viscosity		
Pressure ratio	Output*	Model
28:1	550	60028 R
36:1	550	60036 R

For material with low to medium viscosity		
Pressure ratio	Output*	Model
61:1	275	35061 R
75:1	275	35075 R
46:1	360	48046 R
57:1	360	48057 R

* ccm/cycle

* ccm/cycle

WIWA high-performance plural component paint spraying equipment.
Perfect solutions for nearly all fields of application.



Applications for the DUOMIX 333/300 and 230: marine and offshore industry, tank and container construction, pipe and pipeline coatings, coating for railcars, fire and structural protection as well as large surfaces such as silos, cooling towers and sewage plants.

Applications for the DUOMIX 140: Ideal for applying foam. Airless and Air-Combi versions for use in trade and industry. Quick and easy modification possible for the injection of gels in the structural preservation industry.

Compatible materials for the DUOMIX 333/300 and 230: solvent free plural component materials with high viscosity levels.

Compatible materials for the DUOMIX 140: two-component paints, lacquers and sealant gels.

Mounts available: upon request.

Pump versions: carbon steel and corrosion resistant steel for a variety of application requirements.

Technical data DUOMIX 140	
Mixing ratio	1:1
Pressure ratio	26:1
Max. volume	86 ccm/cycle

Technical data DUOMIX 230	
Mixing ratio	1:1 – 10:1
Pressure ratio	22:1 – 74:1
Max. volume	266 ccm/cycle

Technical data DUOMIX 300/333	
Mixing ratio	1:1 – 8:1
Pressure ratio	up to 85:1
Max. volume	up to 700 ccm/cycle

WIWA transfer pumps can be used for a wide variety of applications involving low to high viscosity materials.



Applications: for paint supply systems, conventional spraying systems, paint circulation systems and dispensing stations in industry and trade.

Compatible materials: paint and lacquers with low to high viscosity, water based lacquers, solvents, oil and grease, separating agents, stain, adhesives, plastisols, sealing materials, bitumen, epoxy material, undercoating materials, roof coating and insulation material, sound protection and other materials with high solids content.

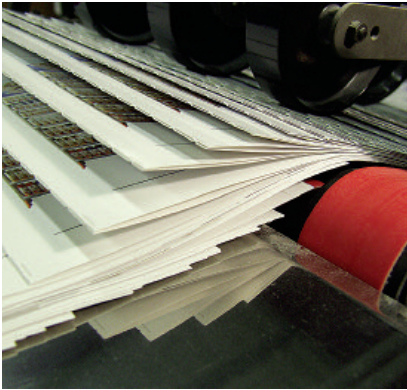
Mounts available: large variety of mounting versions such as cart, wall-mounted, drum cover attachment as well as in combination with ram presses, elevating carts and lifts.

Pump versions: carbon steel, corrosion resistant steel and stainless steel versions assure compatibility with a wide variety of applications.

Technical data TRANSFER PUMPS		
Pressure ratio	Output*	Model
3,5:1	150	150.03,5
5,5:1	150	150.05,5
15,5:1	150	150.15,5
3:1	375	375.03
5:1	375	375.05
9,5:1	375	375.09,5
3:1	600	600.03
6:1	600	600.06
12:1	600	600.12

* ccm/cycle

VULKAN, the new WIWA extrusion pump series for transferring, metering and applying a wide variety of materials. WIWA's renowned and internationally recognized modular pump concept can satisfy virtually any customer requirement.



Applications: WIWA extrusion pumps for railcar and track production, truck and bus production, automobile industry, window manufacturing, adhesive and printing industry.

Compatible materials: high viscosity sealants and adhesives, insulation, silicone, epoxy, mastic, printer ink, urethane, PVC, acrylic materials.

Mounts available: available with rams or lifts that can be cart mounted to provide maximum flexibility.

Pump versions: carbon and corrosion resistant versions available for a wide variety of materials and applications.

Technical Data EXTRUSION PUMPS	
Pressure ratio	16:1 to 94:1
Output	49 to 680 ccm/per cycle

Setting new standards in structural preservation.



2K-Inject 14025

Applications: ideally suited for use in structural preservation, crack injection, surface and veil injection, horizontal barriers and structural sealing.

Compatible materials: sealing material, one and two-component epoxy resins, polyurethane, two-component acrylic gels.

Mounts available: additional accessories upon request.

Pump versions: corrosion resistant.



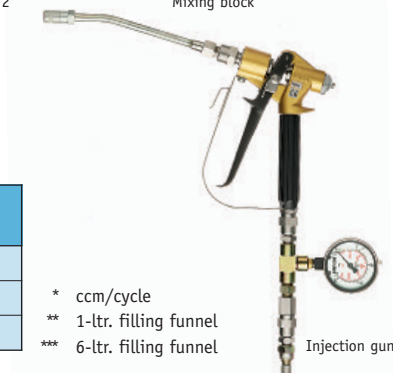
Inject HD 1



Inject HD 2



Mixing block



Injection gun

Pressure ratio	Output*	Model
25:1	80	14025
33:1	14	HD 1**
33:1	14	HD 2***

* ccm/cycle

** 1-ltr. filling funnel

*** 6-ltr. filling funnel