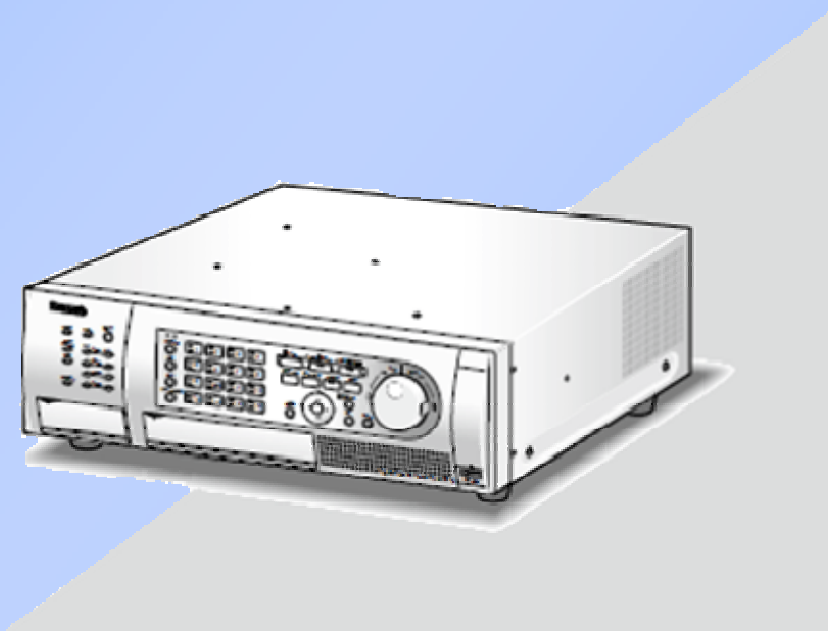


# *WJ-HD616K/716K Quick Reference Guide*

*Remote Operation  
Using Internet Explorer*



*For a local operation quick guide refer to "Local Quick Guide"  
available for download*

*<http://panasonic.ca/english/customer-care/operatinginstructions/query.asp>*

# *Table of Contents*

<b><u>Topic</u></b>	<b><u>Page</u></b>
<b>Table of Contents</b>	2
<b>Displaying the Operation Window</b>	3
<b>About the Operation Window</b>	
- Top Page	4
- [Control] Button	5-6
- Status Display Area	7
- Download Operation Area	8
- HDD Tab / CAM Tab	8-10
<b>Monitor Live images from cameras</b>	
- Displaying images on 1 screen	11
- Electronic Zooming – Live View	11
- Display Images in Multiscreen	12
- Display multiple Camera images Sequentially	12
<b>Record / Playback Images</b>	
- Record Images – Manual Record	13
- Play Recorded Images	13
<b>Playback Operations</b>	
- Playback controls	14
<b>Search and Playback</b>	
- Playback of an Images at a Specific Date and Time	15
- Search and Playback of Recorded Events – Alarms, Schedule REC etc.	16-17
- VMD (Video Motion Detection) Search	18-19
<b>Copy Recorded Images</b>	
- Copy recorded images to SD/SDHC/DVD	20
<b>Playback Images from Media</b>	
- Playback from SD/SDHC/DVD	21
<b>Download Images Currently Being Played</b>	
- Download Current images being played to PC.	22
<b>Play Copy or Downloaded Images</b>	
- Using Viewer Software to playback images from Media	23
- Using Viewer software to playback downloaded video to PC	23
- Playback using the Viewer Software	24
<b>Saving Printing Images from the Viewer Software</b>	
- Saving Images	25
- Printing Images	25
<b>Operating the Cameras</b>	
- Panning / Tilting / Zooming	26
- Focus / Iris Adjustment	27
- Preset Position / Auto Functions ( Auto Panning etc)	28

# Displaying the Operation Window

Turn on the computer and operate the recorder using a web browser

## Step 1

Start Internet Explorer

## Step 2

Enter the IP address or URL assigned to the recorder into the [Address] box, and then press the [Enter] key.  
- The authentication window will be displayed.

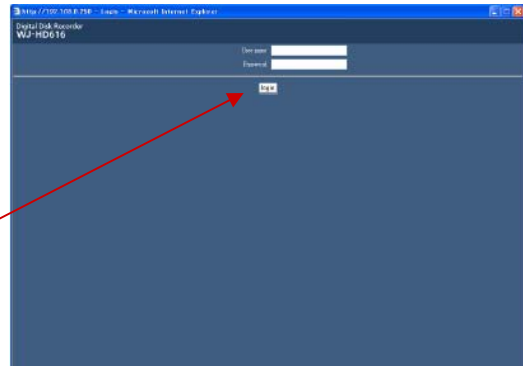
## Step 3

Enter your User name and Password

-Default

-User name: ADMIN

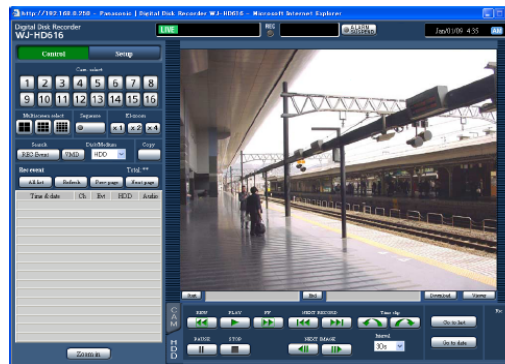
-Password: 12345



## Step 4

Click on [Login]

- The top page will be displayed

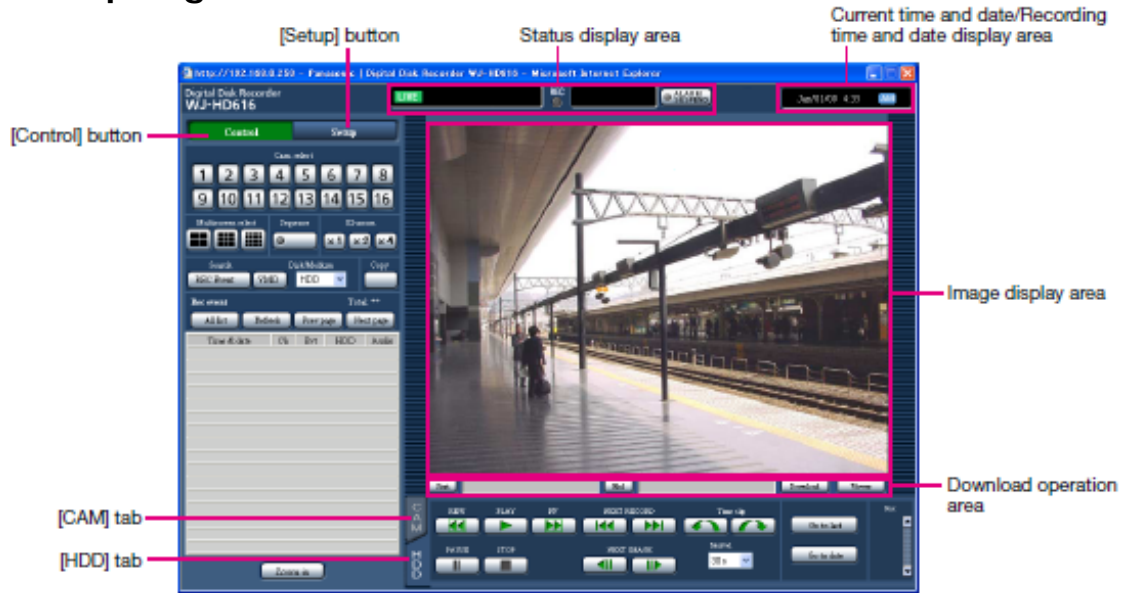


### NOTES:

When displaying the top page of the operation window of the recorder on a PC for the first time, the wizard for ActiveX installation required to display images from cameras will be displayed. Follow the instructions of the wizard to complete the installation.

# About the Operation Window

## Top Page



### [Control] button

It is possible to operate the switcher functions of the camera such as switching the camera channel to display live images from a different camera or start the sequence display using the operation panel displayed by clicking this button. The search result will also be displayed on this tab.

### [Setup] button

Operation relating to the settings of the recorder can be performed using the operation panel displayed by clicking this button.

### Status display area

The current status of the recorder such as playback status, recording status, etc. will be displayed.

### Current time and date/Recording time and date display area

When displaying live images in the image display area, the current time and date will be displayed. When displaying recorded images, the recording time and date (when images were recorded) will be displayed.

### Image display area

Live images or recorded images will be displayed. When configuring the settings, the setup menu will be displayed.

### Download operation area

Downloading of recorded images or the viewer software can be made on this area.

### [HDD] tab

Playback operation of recorded images can be made on this tab.

### [CAM] tab

Camera control such as zooming, focus adjustment, auto panning, etc. can be made on this tab.

## [Control] button

The following operation panels will be displayed when this button is clicked.



### [Cam. select] box

Images from the selected camera channel will be displayed on a 1-screen in the image display area by clicking the button.

### [Multiscreen select] box

Images from 4 - 16 cameras can be displayed simultaneously on a multi-screen.

**4-screen button:** Each time this button is clicked, images from different camera groups will be displayed on a 4-screen.

**9-screen button:** Each time this button is clicked, images from different camera groups will be displayed on a 9-screen.

**16-screen button:** Images from camera channels 1 - 16 will be displayed on a 16-screen.

### [Sequence] box

Images from different cameras will sequentially be displayed. The indicator on the button will light green during the sequence display.

### [EI-zoom] box

Images from the camera will be displayed at a scale corresponding to the clicked zoom factor button.

[x1] button: x1

[x2] button: x2

[x4] button: x4

### [Search] box

Use this button to search recorded images. When selecting "HDD" for "Disk/Media", the [Recording event] button and the [VMD] button will be displayed. The recording event list window or the VMD search list window will be displayed by clicking each button respectively.

When selecting "DVD" or "SD" for "Disk/Media", the [Copy data] button will be displayed. The copy data window will be displayed by clicking the [Copy data] button.

The search result will be displayed in list form at the bottom of the [Search] box.

### [Copy] button

The copy data window will be displayed by clicking this button. Use this button to manually copy recorded images onto an optional DVD or an SDHC/SD memory card.

### Recording event list window

**Number of the listed data:** Total number of the listed data (recording events) will be displayed. When the total number of the listed data is more than 10 000, the ">10000" indication will be displayed.

**[All list] button:** Cancels filtering and lists all recording events.

**[Refresh] button:** Updates the list to the latest one.

**[Prev page] button:** Displays the previous page of the list.

**[Next page] button:** Displays the next page of the list.

**[Time & date]:** Start time of recording will be displayed

## **[Control] button (Continued)**

The following operation panels will be displayed when this button is clicked.

**[Ch]**: A camera channel used for recording will be displayed.

**[Evt]**: Event type will be displayed.

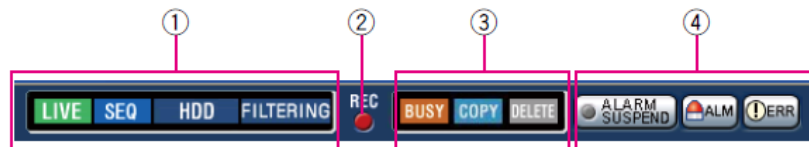
**[HDD]**: The hard disk drive number in which the corresponding recorded images are stored will be displayed.

**[Audio]**: When audio is attached to recorded images, the audio icon will be displayed.

**[Zoom in]** button

Live images from the camera or recorded images will be enlarged by clicking this button.

## Status display area



① **The status of image (live image/recorded image) display operation will be displayed.**

- : Indicates that live images are being displayed.
- : Indicates that playback images are being displayed.
- : Indicates that reverse playback images are being displayed.
- : Indicates that fast playback images are being displayed.
- : Indicates that fast reverse playback images are being displayed.
- : Indicates that a paused image is being displayed.
- : Indicates that recorded images/audio are being downloaded.
- : Indicates that downloading of recorded images/audio is completed.

**[Step 1] - [Step 7]**

: Indicates the playback speed.

- : Normal playback speed (1x)
- : Approx. 2x playback speed
- : Approx. 5x playback speed
- : Approx. 10x playback speed
- : Approx. 20x playback speed
- : Approx. 50x playback speed
- : Approx. 100x playback speed

- : Indicates that the sequence display is being performed.
- : Indicates the normal recording area or the event recording area on the hard disk drive.
- : Indicates that the DVD drive is being elected.
- : Indicates that the SDHC/SD memory card is being selected.
- : Indicates that RAID recovery is being performed.
- : Indicates that a recording events are being filtered.

② **[REC] indicator**  
**Indicates the status of recording.**

- : Indicates that recording is being performed.
- : Indicates that recording is not being performed.

③ **Indicates the following statuses:**

- : Indicates that the camera is inoperable since a user with a higher priority is currently operating the camera.
- : Indicates that copying is being performed.
- : Indicates that recorded images are being deleted.

④ **Indicates information about events and errors.**

**[ALARM SUSPEND] button**

: Clicking this button will disable the subsequent alarm actions

: Indicates that the alarm is being suspended.

**[ALM] button**

: This button will be displayed when an event occurs. The alarm action will be cancelled by clicking this button

**[ERR] button**

: Indicates an error occurrence. The error action will be cancelled by clicking this button.

## Download Operation Area



- ① **The start and end time and date of recorded images to be downloaded will be displayed.**  
**[Start]:** Designate the start time and date of recorded images to be downloaded.  
**[End]:** Designate the end time and date of recorded images to be downloaded.
- ② **[Download] button**  
Downloading of recorded images from the specified start and end time and date will start by clicking this button.
- ③ **[Viewer] button**  
The viewer software will be downloaded by clicking this button. It is possible to play, save and print the downloaded images using the viewer software.

---

## HDD Tab



### [REW] button

Plays recorded images in reverse at high speed.

Playback speed of fast reverse playback will change in the following order each time this button is clicked:

Step1 (1x) → Step2 (Approx. 2x) → Step3 (Approx. 5x) → Step4 (Approx. 10x) → Step5 (Approx. 20x) → Step6 (Approx. 50x) → Step7 (Approx. 100x)

### [PLAY] button

Plays recorded images.

[FF] button Plays recorded images at high speed. Playback speed of fast playback will change in the following order each time this button is clicked: Step2 (Approx. 2x) → Step3 (Approx. 5x) → Step4 (Approx. 10x) → Step5 (Approx. 20x) → Step6 (Approx. 50x) → Step7 (Approx. 100x)

### [NEXT RECORD] button

Skips to the next recorded image and plays it.

### [PREV RECORD] button

Skips to the previous recorded image and plays it.

### [Time slip] button

Jumps forward for a certain time and plays from the jumped point.

### [Reverse time slip] button

Jumps backward for a certain time and plays from the jumped point.

### Interval (Amount of time to be jumped)

Select the amount of time to be jumped from the following.

30 seconds, 1 minute, 5 minutes, 10 minutes, 30 minutes, 60 minutes



## HDD Tab (continued)

### [PAUSE] button

Playback will be paused when this button is clicked during playback. Playback will resume when this button is clicked during pausing.

### [STOP] button

Stops playback and displays live images.

### [NEXT IMAGE] button

The next frame will be displayed when this button is clicked during pausing.

### [PREV. IMAGE] button

The previous frame will be displayed when this button is clicked during pausing.

### [Go to last] button:

Click this button to skip to a point that is the start time of the latest recorded image using the camera channel currently being displayed and start playback.

### [Go to date] button:

The "Go to date" window will be displayed by clicking this button. It is possible to designate the desired time and date from when playback of recorded images is to start.

### [Rec] box

The recording button and the recording stop button will be displayed when the button is clicked.

The recording button and the recording stop button will be hidden when the button is clicked.



**(Recording button):** Starts manual recording.



**(Recording stop button):** Stops manual recording

---

## CAM Tab



### Zoom

Zooming can be adjusted by clicking the [-] button (wide) or the [+] button (tele).

#### NOTE:

It is possible to zoom in and out using the mouse wheel if available.

### Focus

Focusing can be adjusted by clicking the [Near] button or the [Far] button. The auto focus function can be performed by clicking the [Auto] button.

### Control pad/buttons

Clicking the buttons around the control pad can move (pan/tilt) a camera in the clicked direction.

Clicking inside the control pad also can adjust the vertical/horizontal position (pan/tilt) of the displayed live images. Panning/tilting speed will become faster if a clicked point gets farther from the center point of the control pad.

#### NOTE:

- Clicking on the screen can pan/tilt a camera to the clicked direction.

## CAM Tab (continued)

### Brightness

The brightness (lens aperture) can be adjusted by clicking the [-] (darker) button or the [+] (brighter) button.

It is possible to reset the adjusted brightness by clicking the [Reset] button.

### Preset

It is possible to register preset positions of the camera and to move the camera direction to the registered preset positions.

Select the preset position number from the following. Home, 1 - 256

When the [Move] button is clicked, the camera direction will move to the preset position corresponding to the selected preset position number.

When the [Register] button is clicked, the camera direction will be registered and assigned to the selected preset position number.

### Auto mode

Select the auto mode from the following. Click the [Start] button to start the selected auto mode function. Click the [Stop] button to stop the auto mode function.

**Auto track:** The camera will automatically track an object moving on the screen.

**Auto pan:** The camera direction will automatically move (pan) between the start point and end point set in advance.

**Preset sequence:** The camera will move (pan) to the preset positions registered in advance in order of the preset position number (numerical order).

**Sort:** The camera will move (pan) counter clockwise to the preset positions registered in advance in order of the closest from the current position.

**Patrol 1 - 4:** The camera will trace the manually recorded panning pattern.

### [Menu] box

When the [OPEN] button is clicked, the setup window of the camera will be displayed.

# Monitor Live Images

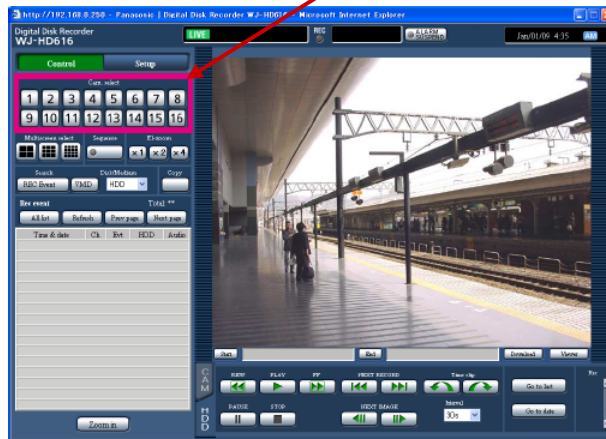
## Display image on 1-Screen

### Step 1

Display the top page of the operation window.  
(refer to pg 3)

### Step 2

Select the camera channel from which images to be displayed.  
- Click the camera channel button in the [Cam. select] box.



- Live images from the selected camera channel will be displayed.

### HINT:

Selecting a camera from the right-click pop-up menu will display images from the selected camera channel.

## Electronic Zooming – Live View

### Step 1

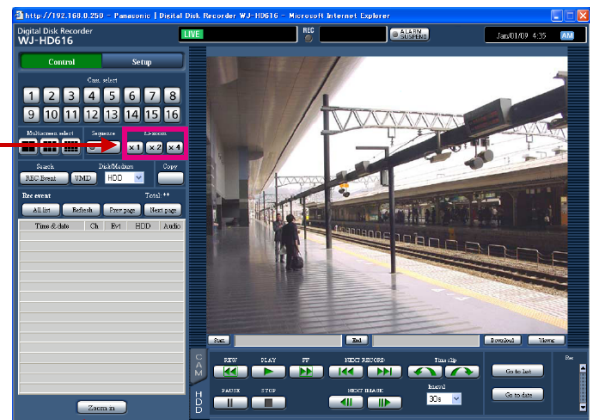
Click any of the [x1], [x2] and [x4] buttons to change the zoom factor of the electronic zoom.

### HINT 1

Clicking a point within the zoomed image moves the zoomed image by positioning the clicked point as the center point.

### HINT 2

By clicking the [Zoom in] button you can view the live images in a full screen format, single screen or multi-screen mode.  
- During the full screen mode return back to main window by right clicking the mouse and select "Back"



# Monitor Live Images (Continued)

## Display Images in a Multi- screen

### Step 1

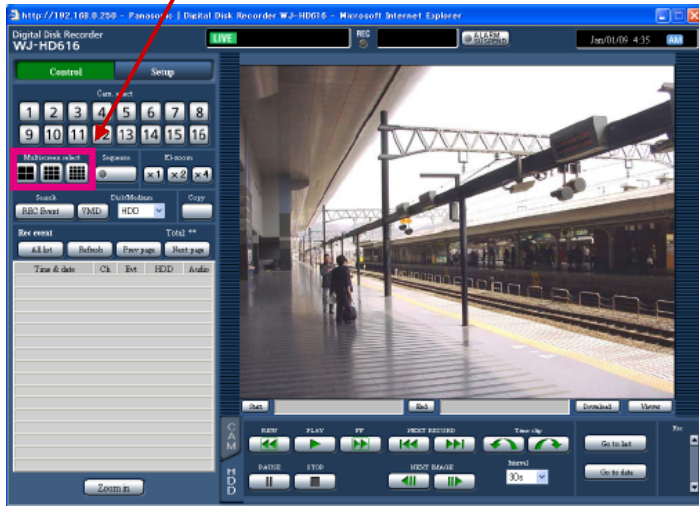
Display the top page of the operation window.  
(refer to pg 3)

### Step 2

Click a multiscreen selection button in the [Multiscreen select] box.

### Step 3

To display images on a 1-screen again, click any of the camera channel buttons in the [Cam. select] box.



### (4-screen button)

Each time this button is clicked, images from different camera groups will be displayed on a 4-screen.



### (9-screen button)

Each time this button is clicked, images from different camera groups will be displayed on a 9-screen.



### (16-screen button)

Images from camera channels 1 - 16 will be displayed on a 16-screen.

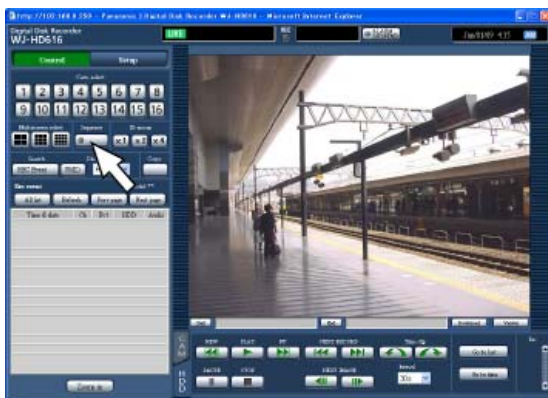
## Display Multiple Camera Images Sequentially

### Step 1

Display the top page of the operation window.  
(refer to pg 3)

### Step 2

Click the button in the [Sequence] box.



- Live images from multiple cameras will be displayed sequentially according to the settings configured in advance. The indicator on the [Sequence] button will light green and the "SEQ" indication will be displayed on the status bar.

### Step 3

To stop the sequence display, click the button in the [Sequence] box again.

# Record/Playback Images

## Record Images (Manual Record)

Recording can be started and stopped manually if the recorder has been pre-configured to do so.

### Step 1

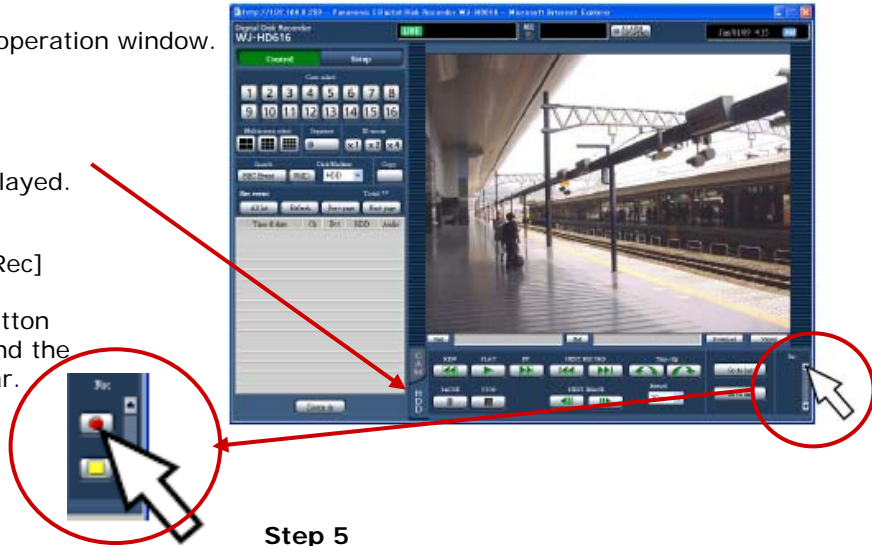
Display the top page of the operation window.  
(refer to page 3)

### Step 2

Click the [HDD] tab.  
- The [HDD] tab will be displayed.

### Step 3


Click the [▲] button in the [Rec] box.  
Continue clicking the [▲] button until the recording button and the recording stop button appear.



### Step 4

Click the  record button to start recording.

### Step 5

To stop recording, click the  stop recording button.  
- The [REC] indicator in the status display area will go off

---

## Play recorded Images


### Step 1

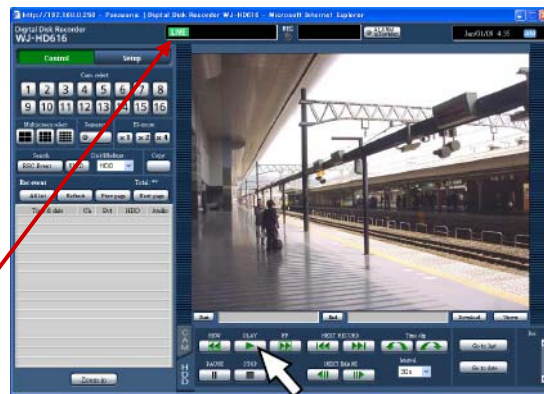
Display the top page of the operation window.  
(Refer to pg 3)

### Step 2

Click the [HDD] tab.  
- The [HDD] tab will be displayed.

### Step 3











Click the  [PLAY] button.  
- Plays recorded images. The (play) indication will be displayed in the status display area.



#### HINTS:

- It is possible to change the camera channel by clicking the camera selection button during playback.
- It is possible to display recorded images on a multiscreen by clicking a button in the [Multiscreen] box during playback.
- When clicking a camera title on the image displayed on a multiscreen, images from the camera whose camera title is clicked will be displayed on a 1-screen.

# Playback Operation

Pause		<ul style="list-style-type: none"> <li>• Playback will be paused when this button is clicked during playback.</li> <li>• Playback will resume when this button is pressed during pause.</li> </ul>
Fast reverse/ Fast reverse playback		<ul style="list-style-type: none"> <li>• Playback speed of fast playback will change in the following order each time the fast playback button is clicked: Step2 (Approx. 2x) → Step3 (Approx. 5x) → Step4 (Approx. 10x) → Step5 (Approx. 20x) → Step6 (Approx. 50x) → Step7 (Approx. 100x)</li> </ul>
Frame by frame playback/ Reverse frame by frame playback		<ul style="list-style-type: none"> <li>• When the frame by frame playback button is clicked, the next frame will be displayed and paused.</li> <li>• When the reverse frame by frame playback button is clicked, the previous frame will be displayed and paused.</li> </ul>
Skip/Reverse skip		<ul style="list-style-type: none"> <li>• When the skip button is clicked, playback point will skip to the start time of the next recorded images.</li> <li>• When the reverse skip button is clicked, playback point will skip to the start time of the previous recorded images.</li> <li>• When there is no next or previous recorded data, the current playback will continue. In this case, playback time of the current playback may sometimes be displayed as around approx. 1 minute ago.</li> </ul>
Time slip/Reverse time slip		<ul style="list-style-type: none"> <li>• When the button is clicked after selecting amount of time to jump (interval), the playback point will jump the selected amount of time (forward) and start playback.</li> <li>• A jumped playback point may sometimes not be an exactly point calculated for the selected amount of time</li> </ul>
Go to date		<ul style="list-style-type: none"> <li>• The "Go to date" window will be displayed by clicking this button. It is possible to start playback by designating the desired time and date.</li> </ul>
Skip to the latest recorded data		<ul style="list-style-type: none"> <li>• Playback of the latest recorded image will start by clicking this button.</li> </ul>
Multiscreen playback		<ul style="list-style-type: none"> <li>• Playback images will be displayed on a multi-screen (4-screen/9-screen/16-screen) by clicking this button.</li> <li>• Each time the 4-screen button or the 9-screen button is clicked, images from different camera groups will be displayed on a 4-screen or on a 9-screen respectively.</li> <li>• When the 16-screen button is clicked, images from camera channels 1 - 16 will be displayed on a 16-screen.</li> <li>• To display images on a 1-screen again, click any of the camera channel buttons in the [Cam. select] box.</li> </ul>
Electronic zoom		<ul style="list-style-type: none"> <li>• Playback images will be zoomed in by the electronic zoom.</li> </ul>
Enlargement of Images		<ul style="list-style-type: none"> <li>• Playback images will be enlarged.</li> </ul>



# Search and Playback

## Playback Images at a Specific Time and Date

Start playback by designating the desired time and date of a recorded image. Playback operation can be performed while recording.

### Step 1

Display the top page of the operation window. (refer to pg 3.)

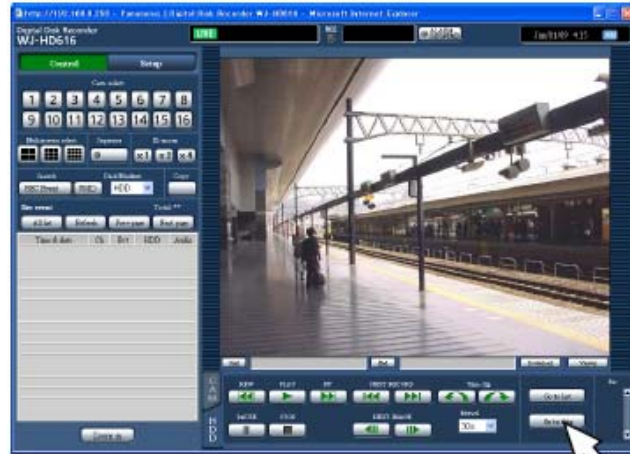
### Step 2

Click the [HDD] tab.

- The [HDD] tab will be displayed.

### Step 3

Click the [Go to date] button.

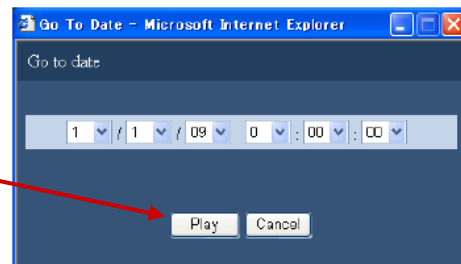


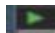
### Step 4

Click the  buttons and set the desired time and date.

### Step 5


Click the [Play] button.



- Playback of images recorded at the designated time and date will start. The  indication will be displayed in the status display area.

### Step 6

To stop playback, press the [Stop] button.

- The  indication on the status display area will disappear and live images will be displayed in the image display area.

# Search and Playback (continued)

## Search and play recording events (recording event search)

Display a list of recorded events, and then select a desired recorded event to play from the list. It is also possible to filter recording events using the following search filters.

Search filters	filter Description
<b>Search</b> Time and date  Event	Search for images recorded in a time range designated by selecting the start time and the end time Search for images recorded by the selected recording mode only. <ul style="list-style-type: none"> <li>• <i>Recording mode/Event</i>                              Manual recording, schedule recording, emergency recording, video loss, terminal alarm, command alarm, video motion detection (VMD), camera site alarm, i-VMD alarm</li> <li>• <i>Displayed when a camera alarm occurred</i>                              Motion detection, object appearance/disappearance detection, terminal alarm, residence detection, direction detection, interruption detection</li> </ul>
Camera	Search for images recorded using the selected camera channels only.

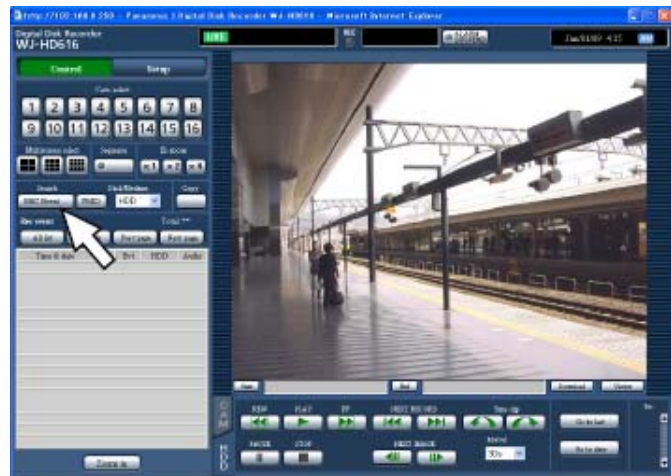
## Search and Play Operation

### Step 1

Display the top page of the operation window (refer to pg. 3)

### Step 2

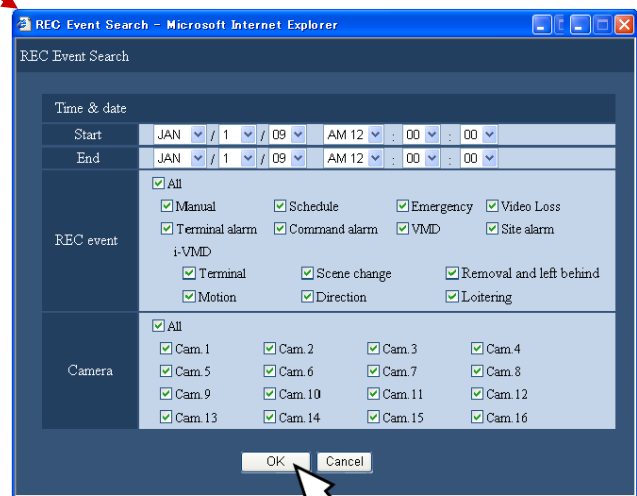
Select "HDD" for "Disk/Media" in the [Search] box, and then click the [REC Event] button.



- The "REC event search" window will be displayed.

### Step 3

Specify the search conditions (filters).



Continued on next page



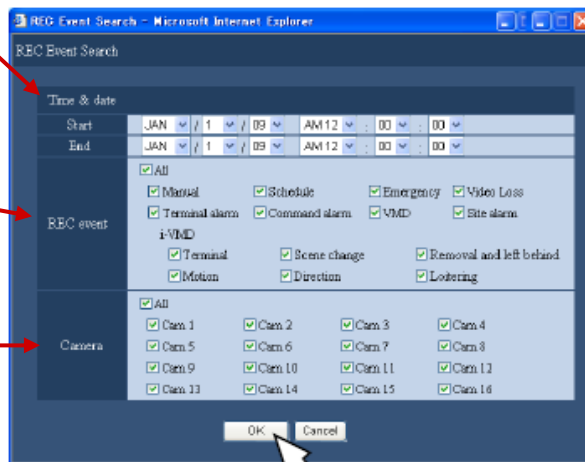
## Search and Play Operation (Cont'd)

**Time & date:** Designate the recording start time and date and the end time and date of recorded images to be searched for.

Select a start time and an end time by clicking the [▼] button.

**REC event:** Select an event type of recorded images to be searched for from the following. The checkbox respective to the selected event type will be checked. (When selecting "All", all the checkboxes will be checked.)

**Camera:** Select the desired camera channel used for recording to be searched by clicking. Select the desired camera channel used for recording. The checkbox respective to the selected camera channel will be checked. (When selecting "All", all the checkboxes will be checked.) To select all camera channels, click "All".



### Step 4

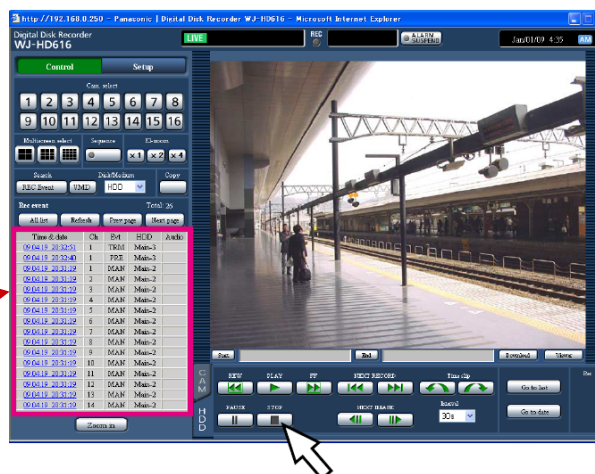
Click the [OK] button after completing the settings.  
- Recording events matched the search conditions will be displayed in the recording event list. The [Filtering] indication will be displayed on the status display area.

### Step 5

Click the time and date of the desired recording event.  
- Playback of recorded images of the selected recording event will start.

### Step 6

To stop playback, press the [STOP] button.  
- Playback will stop. Playback in the image display area will be switched to live image display.



### HINT:

Recorded images will be played on a 1-screen. To play on a multiscreen, click a multiscreen selection button in the [Multiscreen select] box after starting playback.

# VMD (Video Motion Detection) Search

Display a list of time and date when motion activity was detected (by the VMD function) from images recorded by all the recording modes

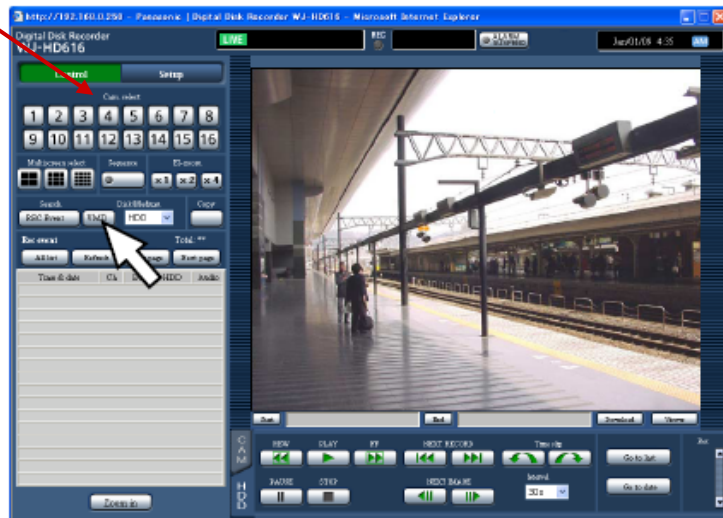
## Step 1

Display the top page of the operation window (Refer to pg 3), and then select the camera channel to be searched for in the [Cam. select] box.

## Step 2

Click the [VMD] button in the [Search] box.

- The VMD search filter window will be displayed.



## Step 3

Specify the search conditions (filters).

### Set detection area and detection sensitivity

Up to 4 detection areas (A - D) can be set. Set detection areas and detection sensitivities for each of them as follows.

#### a. Create a detection area by dragging the mouse.

Up to 4 areas can be created and they will be area A, B, C and D in order of creation.

#### b. Set the detection sensitivity of each detection area.

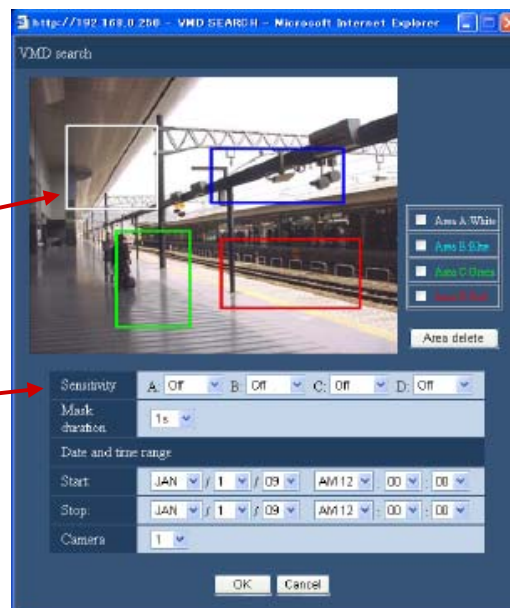
Click the [▼] button, and then set the Detection sensitivity for each area (A - D) from the following.

**Off:** Does not detect motion in the selected area.

**Low:** Low sensitivity

**Mid:** Standard sensitivity

**High:** High sensitivity



# VMD (Video Motion Detection) Search (cont'd)

## c. Specify the mask duration

Click the [▼] button, and then select the mask duration from the following. 1 s, 1 min, 1 h, 24h  
When the mask duration is set, any motion will not be detected for the set duration after motion is detected. Use the mask duration when it takes time to detect motion or when motion is detected frequently.

## d. Specify the time range

Click the [▼] button, and then specify the time range to be searched for.

### Step 4

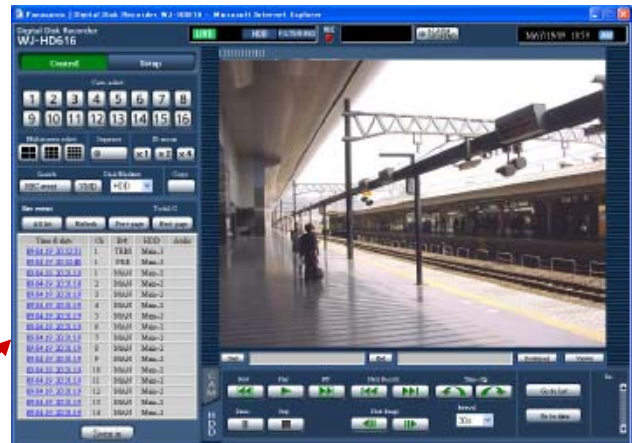
Click the [OK] button after completing the settings.  
- Data matched to the specified search conditions will be displayed in list form.

### Step 5

Click the time and date of the desired data in the result list.  
- Playback of recorded images of the selected data will start.

### Step 6

To stop playback, click the [STOP] button.  
- Playback will stop. Playback in the image display area will be switched to live image display.



### HINT:

Recorded images will be played on a 1-screen. To play on a multi-screen, click a multiscreen selection button in the [Multiscreen select] box after starting playback.

# Copy Recorded Images

It is possible to manually copy images recorded onto a DVD (optional) or an SD/SDHC memory card.

## Step 1

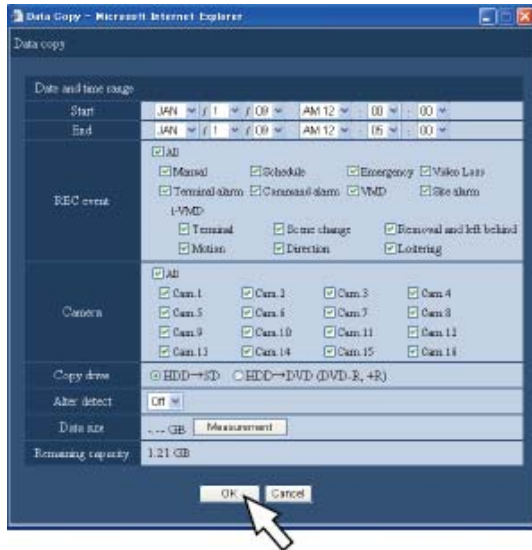
Display the top page of the operation window.  
(refer to pg 3)

## Step 2

Click the button in the [Copy] box.  
→ The data copy window will be displayed.

## Step 3

Specify the detailed conditions of recorded images to be copied.

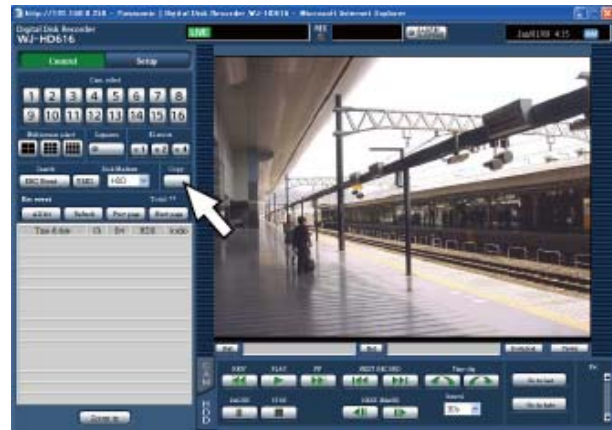


## Step 4

Click the [OK] button.  
- The data copy window will close. Copying will start and the [COPY] icon will be displayed in the status display area. When copying is complete, the [COPY] icon will disappear

### NOTE:

When selecting "DVD Drive" even though an optional built-in DVD drive is not installed, the error message of "No media is inserted" will be displayed.



**Date and time range:** Designate the start time and date and the end time and date of recorded images to be copied.

Click the [C] button, and then designate time and date.

**REC event:** Select an event type of recorded images from the following. Select the event type by checking the checkbox corresponding to the desired event type. The checkbox respective to the selected event type will be checked. (When selecting "All", all the checkboxes will be checked.)

**Camera:** Select a camera channel used for recording. Select the camera channel by checking the checkbox corresponding to the desired camera channel. To select all camera channels, select "All".

**Copy drive:** Select a DVD or an SDHC/SD memory card as a copying destination. Check the checkbox corresponding to either of "HDD → DVD" or "HDD → SDHC/SD memory card".

**Alter detect:** Determine whether or not to attach the alteration detection code to the recorded images to be copied.

When the alteration detection code is attached, it is possible to check if the copied recorded images have been altered or not when playing the copied recorded images using the viewer software.

Click the [C] button, and then select "On" or "Off".

**Data size:** When the [Measurement] button is clicked, size of the data to be copied will be displayed.

**Remaining capacity:** The remaining capacity of the destination media (SDHC/SD memory card or DVD) will be displayed.



# Playback images from Media (SD/SDHC/DVD)

Display a list of copied data (copied recorded images) available on an SD/SDHC memory card or a DVD (optional), and then select a desired recorded image to play from the list.

## Step 1

Insert an SDHC/SD memory card on which recording data is copied into the SDHC/SD memory card slot. When recording data was copied on a DVD, insert it in the DVD drive (if the DVD burner was installed as an option).

## Step 2

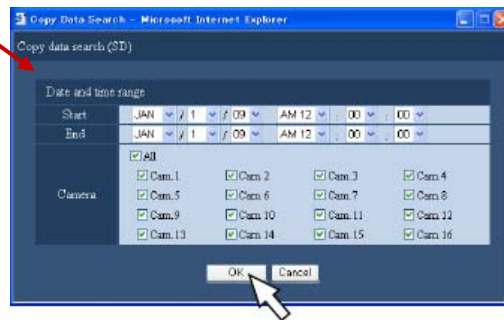
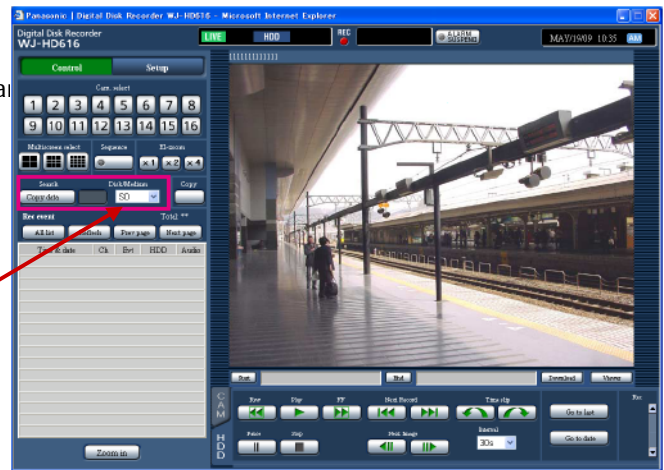
Display the top page of the operation window. (refer to pg 3)

## Step 3

Select "DVD" or "SD" for "Disk/Medium" in the [Search] box, and then click the [Copy data] button.

## Step 4

Specify the search conditions (filters).



## Step 5

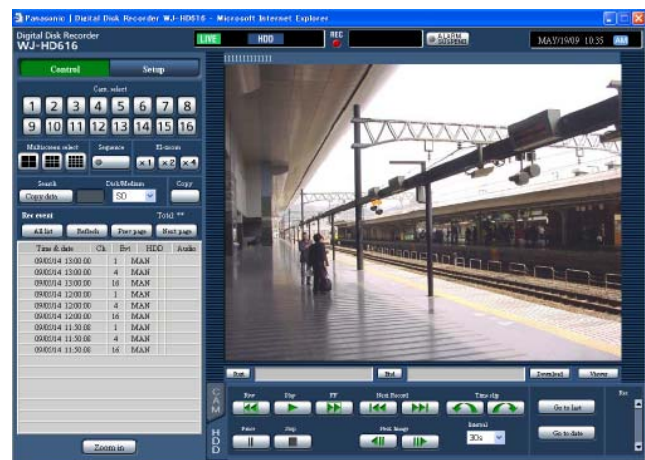
Click the [OK] button after completing the settings.  
→ Copied data matched the search conditions (filters) will be displayed on the copied data list window.

### Important:

- Do not remove the SDHC/SD memory card during playback of copied data on the SDHC/SD memory card. It may damage data on the SDHC/SD memory card.

### HINT:

When checking for a list after inserting another SDHC/SD memory card, select "Hard disk drive" for "Select Medium" in the "Search" box first and then select "SD memory card".



# Download Recorded Image Currently being Played

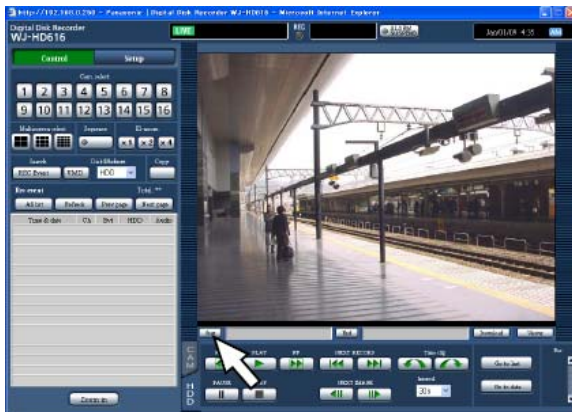
Designate the start and the end points of recorded images currently being played and download images to a PC.

## Step 1

Display the top page of the operation window.  
(refer to pg 3)

## Step 2

Operation can be performed when recorded images are being played on a 1-screen.  
Click the [Start] button in the download operation area at the desired point to set as the start point of the recorded images to be downloaded, or enter time and date in the "Start" box directly.



- The time and date of the start point will be displayed next to the [Start] button.

## Step 5

Click the [OK] button after selecting "With audio" or "Without audio" to determine whether or not to download images with audio and "ON" or "OFF" for "Alter detect" to determine whether or not to attach an alteration detection code to recorded images to be downloaded.

## Step 6

Click the [Save] button.  
- The "Save As" window will be displayed.

## Step 7

Create a new folder in the desired directory and click the [Save] button.  
→ Recorded images and audio will be downloaded as an image data file (filename.n3r) and an audio data file (filename.n3a) respectively.

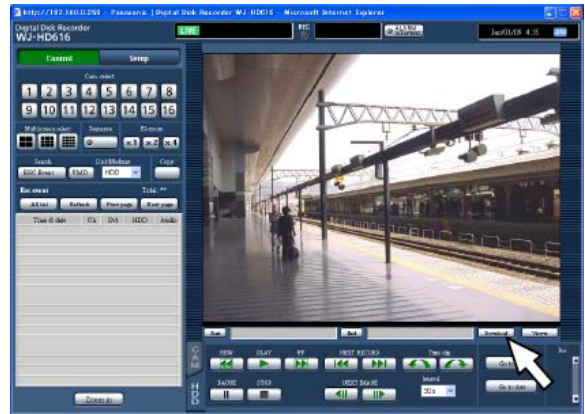
## Step 3

Click the [End] button in the download operation area at the desired point to set as the end point of the recorded images to be downloaded, or enter time and date in the "End" box directly.

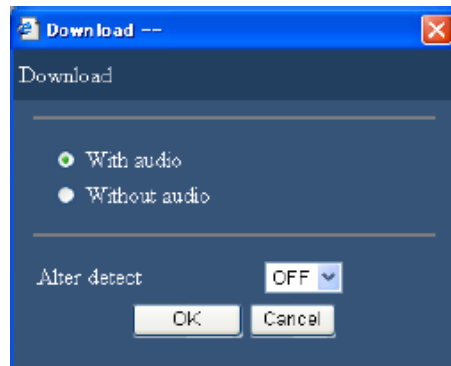
→ The time and date of the end point will be displayed next to the [End] button. It is possible to designate up to a 20 minute time range per download.

## Step 4

Click the [Download] button.



- The "Download" window will be displayed



### NOTE:

- When "With audio" is selected, the "Download" window will be displayed again after the download is complete.
- When playing on a multiscreen, it is impossible to download recorded images.

# *Play Copy or Downloaded Images*

When recorded images are copied/downloaded, recorded images and audio will be copied/downloaded as an image data file (filename.n3r) and an audio data file (filename.n3a) respectively into the copy/download destination.

It is possible to play, save and print the copied/downloaded data files using the dedicated viewer software.

## **Using the Viewer software to play recorded images copied to an SDHC/ SD memory card or a DVD**

Double-click the executable file (HD\_Viewer.exe) to launch the viewer software. The executable file is copied in the following folder together with recorded images.

**Copy destination:** SDHC/SD memory card

[Drive]: \PRIVATE\MEIGROUP\PSS\HDR\HD\_Viewer

**Copy destination:** DVD

[Drive]: \

### **NOTE:**

- The viewer software copied onto an SDHC/SD memory card or a DVD is software that can be launched without installation to a PC. When copying the viewer software to any other folder or destination, copy all the files.

## **Viewer software to play recorded images downloaded using a web browser**

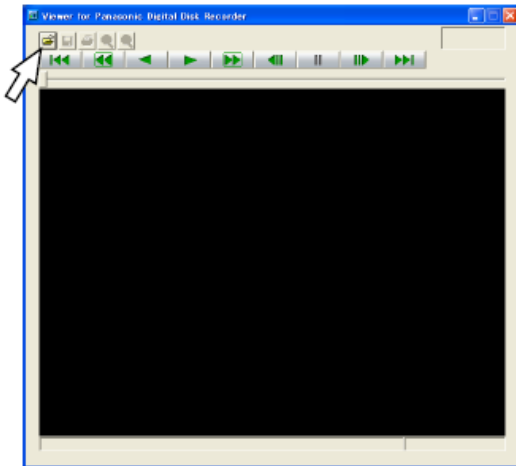
It is necessary to install to a PC and run the viewer software in order to play downloaded recorded images.

# Play Copy or Downloaded Images (continued)

## Playback using the Viewer Software

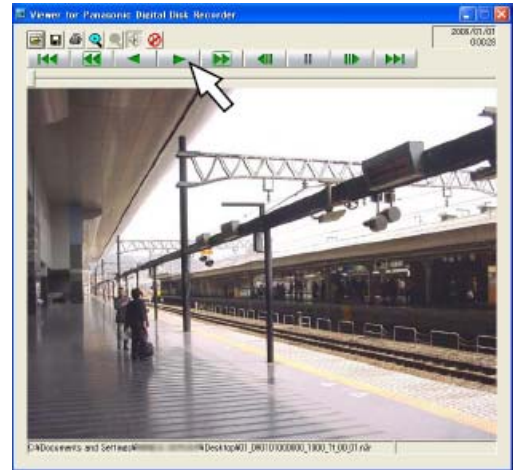
### Step 1

Select "HD\_Viewer" from the start menu ("Start" – "All programs" – "Panasonic" – "HD\_Viewer") or doubleclick the HD\_Viewer icon on the desktop.



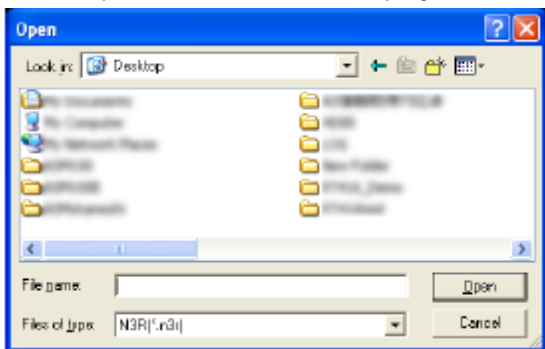
### Step 4

Click the [Open] button.  
→ The image data will be displayed.



### Step 2

Click the [Open file] button.  
- The "Open" window will be displayed.



### Step 5

Click the [PLAY] button.  
When playback finishes, a black screen will be displayed and paused.

### HINTS:

- It is possible to open an image file (extension: n3r) by dragging and dropping it onto the window of the viewer software.
- When two files or more are selected, it is possible to skip to play the previous/next file by clicking the [Previous file]/[Next file] buttons.

### Step 3

Select the downloaded image data file (filename.n3r).

- It is possible to select two files or more (up to 32 files) by clicking the desired files while holding down the [Ctrl] key or the [Shift] key.
- To play audio data, the image data file "filename.n3r" and the audio data file "filename.n3a" are necessary to be saved in the same folder.



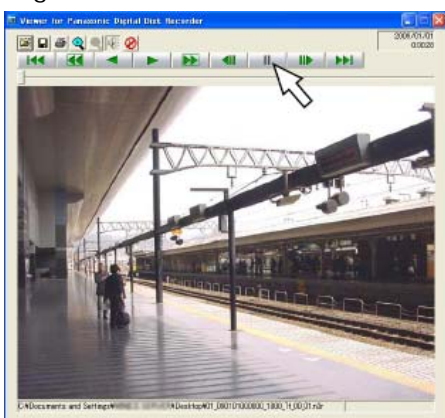
# Saving/Printing Images from the Viewer Software

## Saving Images

The currently displayed image can be saved on a PC as a JPEG file.

### Step 1

Start operation when playing images using the viewer software.



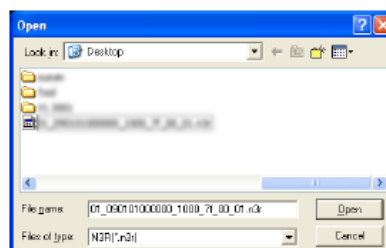
### Step 2

Click the [PAUSE] button.

### Step 3

Click the [SAVE] button.

→ The "Save As" window will be displayed.



### Step 4

Enter the file name, and then select "JPEG (\*.jpg)" for "Save as type".

### Step 5

Designate the folder and click the [Save] button.

→ The image will be saved.

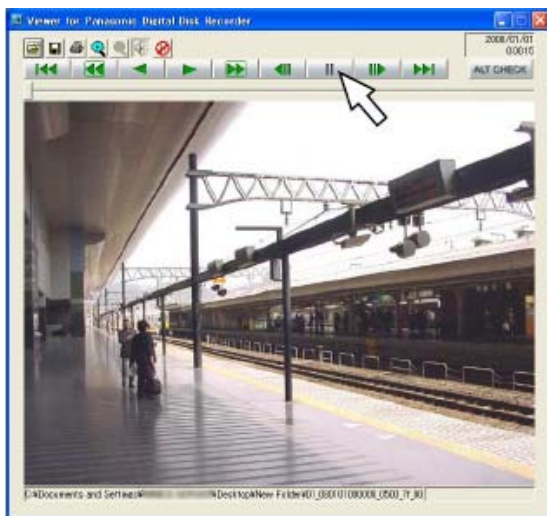
---

## Print the displayed image

The image paused using the viewer software can be printed.

### Step 1

Start operation when playing images using the viewer software.



### Step 2

Click the [PAUSE] button when the desired image is displayed.

### Step 3

Click the [PRINT] button.

When printing an image whose extension is "n3r", the time and date when paused using the viewer software will be printed.

# Operating the Camera

It is possible to perform Pan, Tilt, Zoom, Focus and Iris functions when displaying live images from a combination camera.

## Panning/Tilting

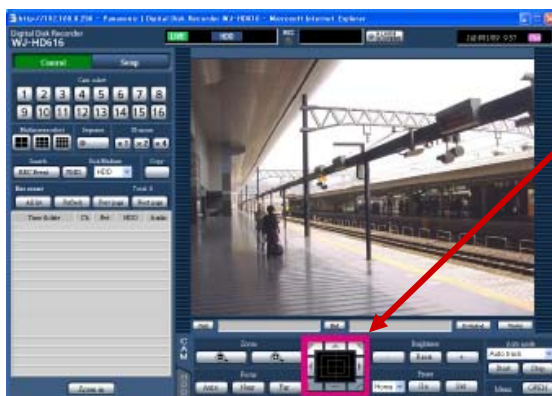
Adjust the horizontal/vertical position of images from the camera.

### Step 1

Display the top page of the operation window.

### Step 2

Display live images from the camera on a 1-screen, and then click the [CAM] tab.



### Step 3

Adjust the horizontal position and the vertical position of the camera (direction) by any of the following.

**Control buttons:** Click to move (pan/tilt) a camera in the clicked direction.

**Control pad:** Click to move (pan/tilt) a camera in the clicked direction. Panning/tilting speed will become faster if a clicked point gets farther from the center point of the control pad.

**Image display area:** Click the desired point to be located at the center of the angular field of view. The camera will move to locate the clicked point as the center point in the image display area.

→ The [CAM] tab will be displayed.

---

## Zooming

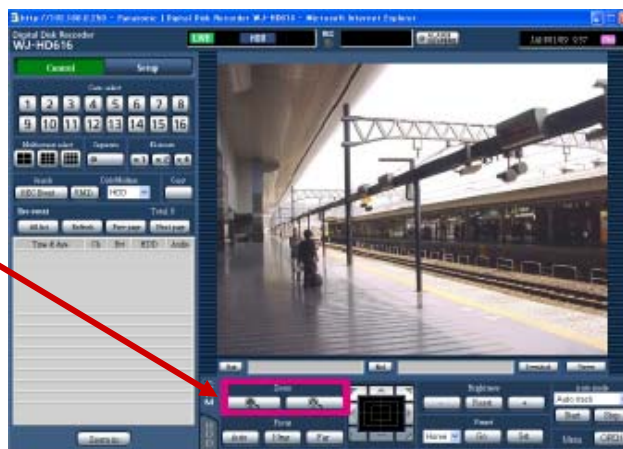
Zoom in/out images from the camera. Depending on the models of the connected cameras, the available zooming factors may be different

### Step 1

Display the [CAM] tab.

### Step 2

Zooming can be adjusted by clicking the [-] button (wide) or the [+] button (tele) in the [Zoom] box.



# Operating the Cameras (Continued)

## Focus Adjustment

Adjust the focus of the camera. The auto focus function is available.

### Step 1

Display the [CAM] tab.

### Step 2

Focusing can be adjusted by clicking the [Near] button or the [Far] button in the [Focus] box.

The auto focus function can be performed by clicking the [Auto] button.



---

## Iris Adjustment

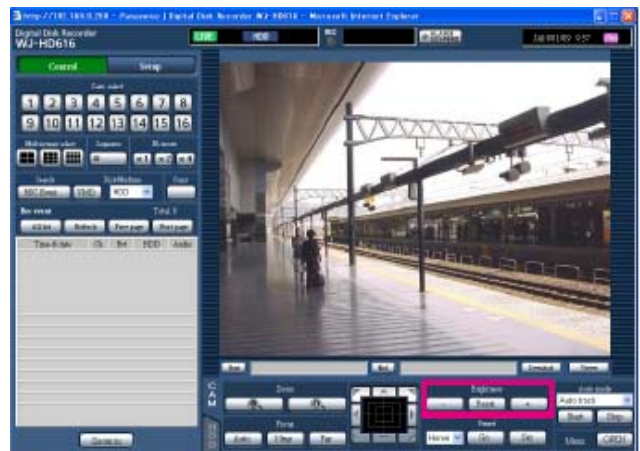
Adjust the lens iris of the camera

### Step 1

Display the [CAM] tab.

### Step 2

The brightness (lens aperture) can be adjusted by clicking the [-] (darker) button or the [+] (brighter) button in the [Brightness] box. It is possible to reset the adjusted brightness by clicking the [Reset] button.



# Operating the Camera (Continued)

## Preset position function

It is possible to register preset positions of the camera and to move the camera direction to the registered preset positions.

### Step 1

Display the [CAM] tab.

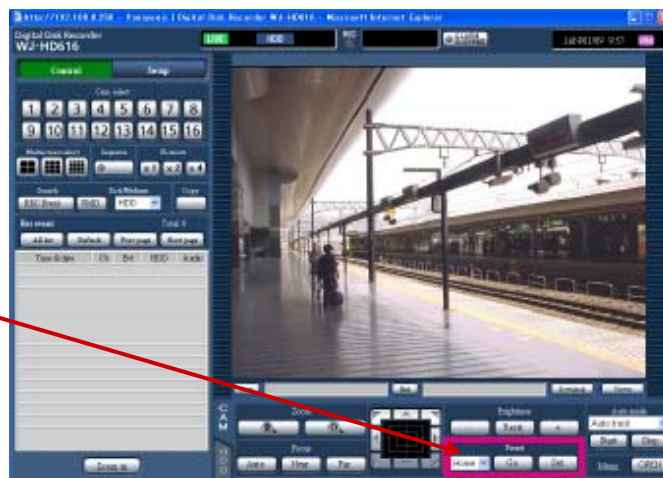
### Step 2

Click the [▼] button, and then select the preset position number from the following. Home, 1 - 256

### Step 3

When the [Register] button is clicked, the confirmation window will be displayed. The camera direction will be registered and assigned to the selected preset position number by clicking the [OK] button on the displayed confirmation window.

When the [Move] button is clicked, the camera direction will move to the preset position corresponding to the selected preset position number.



---

## Auto functions (Auto panning, etc.)

### Step 1

Display the [CAM] tab.

### Step 2

Click the [▼] button in the [Auto mode] box, and then select the desired auto function from the following.

- Auto track:** The camera will automatically track an object moving on the screen.
- Auto pan:** The camera direction will automatically move (pan) between the start point and end point set in advance.
- Preset sequence:** The camera will move (pan) to the preset positions registered in advance in order of the preset position number (numerical order).
- Sort:** The camera will move (pan) counterclockwise to the preset positions registered in advance in order of the closest from the current position.
- Patrol 1 - 4:** The camera will trace the manually recorded panning pattern.



***For more information on Panasonic  
security products please refer to  
[www.panasonic.ca](http://www.panasonic.ca) or call  
1-877-559-8473***