



WL Series

WL-21 (PG. 32) AND WL-42 (PG.34) LOADERS ON JOHN DEERE AND CASE MX SERIES TRACTOR. FEATURES HIGH LIFT AND OPTIMIZED 2WD PERFORMANCE DESIGN.

The Tried & True lineup of Westendorf front-end loaders fits tractors up to 160 horsepower and includes a loader that's perfect for your 2-wheel drive tractor. The WL Series' simple, yet rugged design, first-class workmanship, get-it-done performance and unmatched power will make quick work of any task. Level position indicator. Hydraulic Power-Mount™. Snap-Attach™ System. Hydra-Snap™ one-step coupling. Standard high-capacity bucket. Amazingly low-profile design. The list goes on and on. When you're shopping for a loader, no matter what the size or range, versatility, performance and workmanship are important. So is the value. Our Westendorf loaders are backed by over 75 years of experience and are built to maintain the highest resale values on the market today.



“ I tried to buy a WL-42 years ago at a farm sale. I was always outbid over the price of a new WL-21. My banker understood, and in no time I got my new WL-21 loader. My local dealer said I could pick it up at the factory, and you know, it was fun! Those guys bent over backwards to get my new 21 loader to me. That was 15 years ago. It's about time somebody said something about being built in the GOOD OLD USA again. Tell them boys doin' the weldin' to keep up the good work... they got it better than NASA when it comes to steel!”

Norman L. Willey
Willey Farms - Yale, IA

Legendary 2WD loader series

– ideal for your old or new 2WD tractor

This line of loaders is designed and tailored to fit a 2WD tractor. Reap the benefits of this tried and true 2WD design with a larger power triangle for unmatched strength, a better fit along the tractor’s hood, faster operation on older tractors and an unmatched integrated feel during operation.

Reliability you can count on

The WL Series loaders have withstood the test of time. The original design, developed back in the 60’s, has evolved over the years into the ideal 2WD loader. Its larger power triangle, double tapered arms, overall arm to cylinder proportions and the way it mounts to the tractor takes into account every aspect of a 2WD tractor to minimize strain to a lighter duty front axle while offering the same performance, lift height and capacities of a 4WD loader.



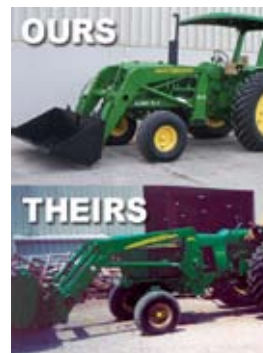
Power-Mount™ - Solid welded tower supports the loader

When it’s time to plant or use the tractor for field work, just park your loader in minutes with Westendorf’s Power-Mount™ system. Others “say” theirs is easy, but none match the speed, ease and simplicity of this all-matic hydraulic

system. Power-Mount™ does NOT require tools or dangerous kick stands and can be on OR off in less than 2 minutes.

Becomes ONE with the tractor

With no large front tires to get in the way, a 2WD loader can be positioned farther back on the tractor. This impacts how the loader and tractor feel “together” during operation. A 4WD loader is designed to fit and reach over large



front tires; as a result, placing it on a 2WD tractor will require the loader to sit farther forward and higher along the hood.



“I’ve hauled everything in this loader but the Queen of England!”

Scott Yeargin - Ottawa, KS

“This is the finest loader I have ever seen. This thing is incredibly easy to install/remove. I cannot imagine owning any other loader!”

Allen Gross



It’s a Snap!

Of course, the WL Series* loaders come with the time-tested and patented Snap-Attach™ system. It is a reliable quick-attach system that turns your loader into a user-friendly, multi-purpose tool. Removing the bucket is quick and easy. You can change to another attachment in just minutes and lock one back on without getting off the tractor. If you have an older WL series loader before the Snap-Attach™ system was introduced (over 30 years ago), there is a retrofit package available for your WL-20, WL-30 or any model in between.

*WL-21 loader requires package upgrade.

More Attachments

Choose from a wide selection of attachments such as quick-dismount grapple forks, 3-D grapple claw, brush crushers, bale spears, boom, forklifts, dozer blades, v-plows, snow scrapers and more. See pp. 36 & 37.

Customize it for the task at hand

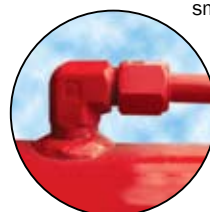
The WL-21 has a unique capability which allows setting the loader’s boom cylinder to a Power Plus Position for increased capacity, breakout and digging depth. Or, set it to the High Lift Position when the task at hand requires more lift height.

Tried and True

Simple rugged design has outperformed all other loaders for over 50 years. Just ask your grandfather. With over 75 years of experience, Westendorf KNOWS where to put the steel when designing a legendary workhorse loader to keep the loader light and the stress off your tractor.

Triple seal hose fittings

Flareless hose and cylinder fittings offer three separate levels of leak defense. They handle higher burst pressures and can be used with heavier tubing to withstand the higher hydraulic pressures found in today’s newer tractors.



It’s all about the “power triangle”

Smaller front tires allow the lift cylinders to be positioned lower on the tower. This creates a near perfect equilateral triangle between the three connection points illustrated above. First, this increases the lift capacity of the cylinder because the cylinder is positioned at a more powerful position. Secondly, because of increased power, we are able to use smaller diameter cylinders with the same performance as a larger cylinder. **What does this mean to you?** This means you get a much faster operating loader, especially if you are installing it on an older 2WD tractor with limited hydraulic output.

Custom options

Build a loader to meet your material handling needs. Add items such as a Hydra-Snap™, comfort ride, mechanical self-leveling, larger cylinders or custom paint color to your loader.

Simple mounting system

Bracketry is simple and based on the horse collar principle distributing the weight through the entire frame instead of over the front axle.

Quality components

To prevent wear, bushings have a grease relief chamber around the pins to distribute grease evenly during operation. Torsion tube is located for optimum visibility and goes through both walls of the arm to resist twisting.



“None are broken or busted up. They still work and look good!”

“I have 3 Westendorf loaders—WL-42C, TA-26, and a WL-21. I’ve had them for over 30 years. I use my TA-26 and WL-42C for round bales. Westendorf has the best high lift loader for hay. The quick-attach is nice to convert other attachments on the market to my Westendorf loaders. None are broken or busted up. They still work and look good!”

Roger Gaswint - Iowa

Big Buckets

High capacity buckets come standard on all WL loaders. Low-profile bucket reinforcements keep material from getting hung up inside the bucket and are easily adaptable to quick attach grapple forks. Add custom options such as built-in chain hooks or back drag blade when ordering. See bucket options and attachments. (p. 106)

Quality Cylinders

Westendorf cylinders are manufactured to internal quality levels based on over 75 years experience. They’re compact, lightweight and highly reliable. Metal piston rings with permaseal joints outperform plastic components in heavy-duty work environments year after year. The piston rods are chrome-plated above industry standards for more protection from rust corrosion, stroke wear and surface flaws. The cylinders are tested several times under both high and low pressure before delivery.





WL-21

Westendorf power in a smaller size up to 80 HP »
5925# at 10'

The WL-21 or the Jiffy Loader™ is the perfect fit for that smaller 2WD tractor, maintaining all the strength and durability that we put into our larger loaders. Great for moving hay, feeding livestock or cleaning up around the yard.

WL-21

Base package:

- 2-1/2" Bucket Cylinders
- 2-1/2" Lift Cylinders
- Hydraulic Power-Mount™
- Mounting & Hose Kit
- MA-40 Hydraulic Manifold
- Bucket Gauge Rod
- 72" Bucket

Options:

- Snap-Attach™ System
- Skid-Steer™ Adapter
- Hydra-Snap™
- Comfort Ride
- 3rd Steel Line
- Back Drag Blade
- Bucket Teeth
- Rotational Indicators
- Level UP Advantage
- Precision Valve w/Regen Spool
- Precision Joystick
- Attachments (pp. 36-37)

Ideal Match

You will feel the difference when you lift a large round bale or a bucket full of manure with a WL loader that fits well and sits back farther on the tractor.

A - The WL-21 features two lift cylinder connection points to match it to the task at hand. Choose the power plus position or high lift position.

B - The auto-lock feature will automatically lock the loader to the tractor without you leaving the tractor's seat. Just rotate locks to release loader for dismount.

C - The original, time-saving Snap-Attach™ system, adds versatility you need to take on any material handling situation. The design is time-tested and automatically locks the attachment to the coupler without tools or additional trips off the tractor.

D - Loaders are Westendorf Red in color; however, for you brand loyal enthusiasts who would like your loader painted to match your tractor, just let us know and allow a few extra days for your custom loader to arrive.

E - No tunnel vision here... The low-profile fit of the WL Series loaders will let you see clearly in all directions while working for faster and safer operation.



WL-27

The WL Series workhorse up to 100 HP »
5450# at 12'

The WL-27 is ready for any chore your tractor can handle. The WL-27 is considered an outstanding hay loader with its 12' lift height. Its low-profile design looks great on today's newer tractors. It's one powerful loader that will get all those jobs done quickly and efficiently. It falls between the WL-21 and WL-42 for fits and features.

WL-27

Base package:

- 2-1/2" Bucket & Lift Cylinders
- Hydraulic Power-Mount™
- Snap-Attach™ System
- Mounting & Hose Kit
- MA-40 Hydraulic Manifold
- Bucket Gauge Rod
- 72" Bucket

Options:

- 84" bucket
- Specialty Buckets
- Hydra-Snap™
- 3rd Steel Line
- Back Drag Blade
- Bucket Teeth
- Rotational Indicators
- Level UP Advantage
- Comfort Ride
- Precision Valve w/Regen Spool
- Precision Joystick
- Attachments (pp. 36-37)

WL-42

"Tried & True"

Power plus a whole lot more up to 160 HP »
7025# at 12'6"

The WL-42 is our flagship loader with over 500 fits. It is commonly referred to as our "Tried & True" loader. We've been asked if we are ever going to change it? Our reply... Why change something that has served our customers so well for over 50 years. It is hands down the best 2WD loader for your dollar. Plus, its resale value is impressive. The WL-42 has the strength and long-term durability to provide you many, many years of service. Its classic styling lends itself well to old or new 2WD tractors. It is a comfortable loader to operate; you won't find a more reliable, committed or better fitting loader on the market today. It features the original on and off without stands and the Snap-Attach™ for quick attachment changes as a standard package component.

WL-42

Base package:

- 2-1/2" Bucket Cylinders
- 3" Lift Cylinders
- Hydraulic Power-Mount™
- Snap-Attach™ System
- Mounting & Hose Kit
- MA-40 Hydraulic Manifold
- Bucket Gauge Rod
- 84" Large Capacity Bucket

Options:

- Mechanical Self-Leveling
- 3" Bucket Cylinders
- 96" Bucket
- HDHC Specialty Buckets
- Hydra-Snap™
- 3rd Steel Line
- Back Drag Blade
- Bucket Teeth
- Rotational Indicators
- Level UP Advantage
- Comfort Ride
- Precision Valve w/Regen Spool
- Precision Joystick
- Attachments (pp. 36-37)



I've had my WL-42 loader for 24 years and haven't had to ever put a weld on it!"

Warren Dibble - Minnesota



photo provided by Rene Rodriguez



Tool Free...

Since its introduction over 30 years ago, the Original Snap-Attach™ system has retained its rank as the #1 quick change attachment system on the market.

Snap-Attach™

Tried and true design does NOT require any tools



The simple Snap-Attach™ adapter has a patented V-shape to self-align the attachment to the adapter; plus, it ensures a tight connection over time minimizing wear. This system has been tested over time and it is one of the top reasons customers give for loving their Westendorf loader. See page 9 for details.

WL Series Attachments

	DB-84 DB-96	SBB-8 SBB-10	VP-96	EB-34	FL-42 FL-48	BC-4000	BC-5000	BC-6000	BC-7700	BC-8800
WL-21	●	●	●	●	●	●	(2)	(2)	(1)	●
WL-27	●	●	●	●	●	●	●	●	●	●
WL-42	●	●	●	●	●	●	●	●	●	●

	Z-47	GF-20	GF-28 GF-52	GF-51	GF-64	GF-84 GF-96	GF-184-3D	GF-32 TB-38	FB-42
WL-21		●						●	●
WL-27		●	●					●	●
WL-42	●		●	●	●	●	(3)	●	●

(1) Requires skid-steer adapter (2) Requires Snap-Attach™ (3) Requires HDHC Bucket

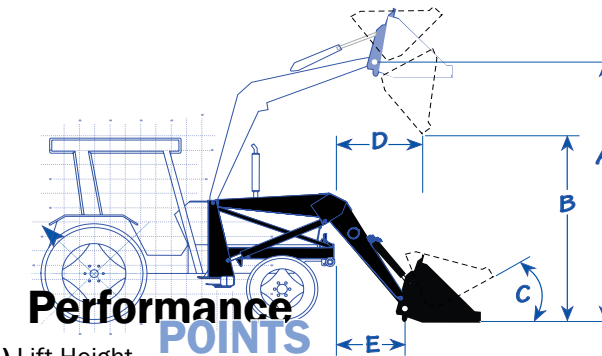
I have an Allis-Chalmers 460 loader; I recently set it up with the Snap-Attach™ system and it works great! I go from moving round bales to moving pallets to scooping manure in seconds!

Brian R. Young
Agricultural Education - Trimble County



Quick-Tach Bucket Teeth

On when you need them and off when you don't! The easiest and only tool-free tooth bar on the market. No holes to drill, no installation required... See page 106.



- A) Lift Height
- B) Clearance
- C) Rollback
- D) Reach at Max Height
- E) Reach at Ground Level

*For additional information on AWC Capacity - see page 11.
Note: Above specifications are based on ASABE S301.3 standard. Specifications may vary depending on make and model of tractor, front axle configuration, tire size, hydraulic system and type of attachment. Design specifications are subject to change without notice or obligation.

WL Specifications

	WL-21	WL-27	WL-42
Tractor HP Rating (approximate)	up to 80 HP	up to 100 HP	up to 160 HP
A Full Height (ground to pin - feet/inches)	10' / 120"	12' / 144"	12' 6" / 150"
B Clearance (bucket dump - inches)	94"	120"	130"
C Rollback	5"	12"	9"
D Reach at Max Height	34"	32"	30"
E Reach at Ground Level (to pin)	20"	28"	32"
	2500 psi 3000 psi	2500 psi 3000 psi	2500 psi 3000 psi
Lift Capacity - AWC* (31.5" from pin)	3000 3600	3100 3720	4000 4800
Lift Capacity - at Pivot Pin	4935 5925	4540 5450	5860 7025
Lift Cylinder - Std Opt.	2-1/2"	2-1/2"	3"
Bucket Cylinder - Std Opt.	2-1/2"	2-1/2"	2-1/2" 3"
Bucket Sizes Available	72", 84"	72", 84"	84", 96"

	SQ-80	SP-22	SP-43 SP-76	SP-42	SP-74	SS-I	SS-II	BH-15	QT-72	BT-84
WL-21	●	●	●	●	●	●	●	●	●	●
WL-27	●	●	●	●	●	●	●	●	●	●
WL-42	●	●	●	●	●	●	●	●	●	●