

2019

# WOMEN IN ALTERNATIVE INVESTMENTS CAREER FORUM

*The industry leading event to recruit and source  
the next generation of women in finance.*

NOVEMBER 8, 2019

NEW YORK CITY

WAVE

Women's Association of Venture & Equity





Women's Association of Venture & Equity

Welcome to the 2019 Women in Alternatives Career Forum hosted by the Women's Association of Venture & Equity (WAVE). We are thrilled to again be hosting an event that brings together talented young women with industry veterans who are committed to increasing diversity within their fields.

Numerous studies have shown there are clear business rationales to care about diversity, yet we as an industry have still fallen short. The commitment from the women and men in this room demonstrates that many within this industry have taken these shortcomings to heart and are committed to improving the status quo. We believe that improved diversity should not be solely the cause of the underrepresented groups but rather should be top of mind for all. The reality is that the leadership for many organizations may not look like the diverse employee populations that they seek to build but that doesn't mean that they can't be powerful advocates for creating more diverse, well-rounded teams.

WAVE created this event with the hope that it can support diversity initiatives already in-place and help to broaden the funnel of women who enter the industry each year as well as provide the opportunity for young women to enhance their peer networks given that community and meaningful mentor relationships can play a critical role for a successful career. WAVE hopes that by providing a resource for candidates to learn about the breadth of career paths available as well as the core skill sets needed for each, more women will have interest and be successful within the alternatives industry. The 2019 Forum is the third iteration of this event and each year we've been overwhelmed by the growing enthusiasm and support from others in the industry who are eager to come together for this cause. We are appreciative to our sponsors and supporting organizations, without them this event truly would not be possible. It is inspiring to see so many in the industry keen to be a part of the solution.

To the 2019 Career Forum Scholars, we are delighted to have you with us. We are so impressed with your experience and educational credentials. We received more than 600 applicants from 70+ different educational institutions in North America and Europe and it was a difficult task to decide which of you should be invited to attend. It's encouraging to see so many young, talented women eager to grow within this industry and we hope this Career Forum will be a valuable resource for you as you embark or continue along this journey. We hope that many of you will decide to pursue paths within alternative investments as we are sure that our industry can benefit from your immense talent and fresh perspective for years to come.

Sincerely,

WAVE Career Forum Co-Chairs



Anna Marie Curran  
Moelis & Company



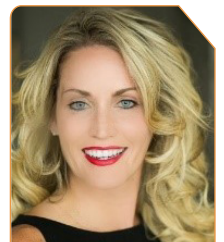
Danielle Fraser  
WAVE Coordinator



Kirsty McGuire  
Stepstone Group



Chrissie Chen Pariso  
Exelon Corporation



Shannon Zoller  
Tephra Advisors

# THANK YOU TO OUR EVENT SPONSORS

## CO-LEAD SPONSORS



## PLATINUM SPONSORS



## HOST SPONSORS



## GOLD SPONSORS



COFFEE/  
NETWORKING  
SPONSOR



LUNCH  
SPONSOR



PRINT  
SPONSOR



SMOOTHIE  
SPONSOR

**TRIAGO**

## SILVER SPONSORS



# THANK YOU TO OUR EVENT SPONSORS

## EXPO SPONSORS



## SUPPORTING ORGANIZATIONS



## SPECIALTY SUPPORTERS



## FOUNDING SPONSOR



## SUPPORTING SCHOOLS



# AGENDA

7:00–8:00 AM TRIANON BALLROOM	Registration and Buffet Breakfast
7:00–7:45 AM MERCURY BALLROOM	<p>Board Breakfast – <i>Invite Only</i></p> <p>Moderator: Kelly Williams - CEO, The Williams Legacy Foundation</p> <p>Panelists:</p> <ul style="list-style-type: none"> <li>▶ Julie Richardson - Director, UBS</li> <li>▶ Judith McHale - Director, Viacom</li> <li>▶ CoCo Brown - Founder, Athena Alliance</li> </ul>
8:00–8:15 AM TRIANON BALLROOM	<p>Welcome Remarks &amp; Keynote Speaker</p> <ul style="list-style-type: none"> <li>▶ Nicole North - Partner, Executive Talent, Lightspeed Venture Partners</li> </ul>
8:20–9:05 AM TRIANON BALLROOM	<p>Panel 1: Leading Ladies in Alternative Investments</p> <p>Moderator: Elizabeth Weindruch - Managing Director, Barings</p> <p>Panelists:</p> <ul style="list-style-type: none"> <li>▶ Elizabeth Jourdan - Deputy Chief Investment Officer, Mercy Health</li> <li>▶ Sarah Kim - Partner, Clayton, Dubilier &amp; Rice</li> <li>▶ Ginger Lew - Managing Director, Cube Hydro Partners</li> <li>▶ Kathryn Regan - Partner, Landmark Partners</li> </ul>
9:05–9:25 AM	Networking Break
9:25–10:10 AM TRIANON BALLROOM	<p>Panel 2A: Learning from the Experts: Breaking into Alternative Investments</p> <p>Moderator: Laura Hill - VP, Alternative Investments, Advocate Aurora Health</p> <p>Panelists:</p> <ul style="list-style-type: none"> <li>▶ Caitlin Fitzmaurice - Managing Director, UVMCO</li> <li>▶ Winnie Liu - Vice President, Lindsay Goldberg</li> <li>▶ Stewart Long Davis - Senior Associate, Roark</li> <li>▶ Alexa von Tobel - Managing Partner, Inspired Capital</li> </ul>
9:25–10:10 AM MERCURY BALLROOM	<p>Panel 2B: Learning from the Experts: Introduction to Careers within Alternative Investments</p> <p>Moderator: Nicola Halsall Idehen - Chief Human Resources Officer, The Vistria Group</p> <p>Panelists:</p> <ul style="list-style-type: none"> <li>▶ Roanne Daniels - H&amp;F Partner (Operating Group), Hellman &amp; Friedman</li> <li>▶ Lana Lewin - Managing Director, Credit Suisse</li> <li>▶ Angela McCoy - Vice President, PSP Capital Partners</li> <li>▶ Francesca Whitehead - Associate, Global Impact Team, KKR</li> </ul>
10:10–10:30 AM	Networking Break
10:30–11:15 AM TRIANON BALLROOM	<p>Panel 3: Male Perspectives on Diversity</p> <p>Moderator: Chris Keller - Partner and Portfolio Manager, Archean Capital Partners</p> <p>Panelists:</p> <ul style="list-style-type: none"> <li>▶ Ryan Bailey - Managing Partner, Pacenote Capital</li> <li>▶ Darren Friedman - Partner, StepStone Group</li> <li>▶ George Suttles - Director of Research, Commonfund Institute</li> <li>▶ Gero Wittemann - Partner, Hg</li> </ul>
11:15–11:20 AM TRIANON BALLROOM	Closing Remarks
11:20 AM–12:20 PM TRIANON BALLROOM	Roundtable Discussions
12:20–12:30 PM	Transition to Career Expo
12:30–2:30 PM AMERICAS HALL	Lunch/ Career Expo



Keynote  
**Speaker**





## ➤ Nicole North

Partner, Executive Talent at Lightspeed Venture Partners

While Nicole joined Lightspeed in early 2019 to help lead the firm's executive talent function, she's been working closely with the Lightspeed team and portfolio for many years — from helping build transformational teams at enterprise companies like AppDynamics and Aerohive to consumer companies such as Rothy's and Haus Beauty, to name a few.

Before Lightspeed, Nicole spent nearly a decade at executive search firm, SPMB, where she founded the firm's dedicated consumer practice. It was an exciting opportunity given SPMB's legacy of building the best enterprise organizations in the world, and a natural challenge for Nicole as she spent the first half of her career working for Korn Ferry International's Consumer Digital practice. Lyft, Rent The Runway, Coinbase, Capital One, Instacart, Walker & Co., Yelp, Nerdwallet, and Oculus are just a few of the companies she's successfully served throughout the years.

Like many of her peers at Lightspeed, Nicole's passionate about advancing diversity and inclusion in tech and infuses that into everything she does. "I'm thrilled about the opportunity Lightspeed provides to come into a company from a different angle, typically much earlier, and have an impact at the foundational stages enabling us to address more of the systemic issues impacting D&I in tech," said Nicole. "As the tech landscape continues to evolve, it's clear that we're in an exciting era of venture capital requiring a new approach to how we holistically fund and support the long-term success of our portfolio companies which MUST include prioritizing diversity and inclusion — from ICs to the board."

Nicole was a Regent's Award Scholarship recipient at Seattle University where she received her bachelor's degree in International Business and studied abroad at the University of Maastricht in the Netherlands. Born in Brazil and a citizen of the United States, Brazil, and Portugal, Nicole has a deep appreciation and love for different cultures and spends most of her free time riding bikes or building train tracks and "LEGO everything" with her husband and two young children in Marin.

# PANEL 1 8:20AM-9:05AM

## Leading Ladies in Alternative Investments



### > Moderator: Elizabeth Weindruch

Managing Director, Barings

Elizabeth Weindruch is a member of Barings Alternative Investments, a global real estate, private equity and real assets platform. Elizabeth is a Managing Director and Investment Committee member of the Funds & Co-Investments team and is responsible for originating and underwriting funds and co-investments globally. Prior to joining the firm in 2015, she was with the Wells Fargo Investment Institute where she led the strategy, due diligence, implementation and support efforts for private equity and private real estate products across the alternative investments platform. She has also held various roles at Citi Private Bank, Brooke Private Equity Associates and Investor Group Services during her 15-year tenure in the industry. She serves as a Trustee for the Heifer Foundation, a global non-profit that supports the mission of Heifer Project International to end global poverty and hunger. Elizabeth holds a B.A. in Political Science from Davidson College. She is a Little Rock, AR native but is proud to call Charlotte, NC home.



### > Elizabeth Jourdan

Deputy Chief Investment Officer, Mercy Health

Elizabeth Jourdan is the Deputy Chief Investment Officer for Mercy Health, a non-profit health system in the Midwest. She is responsible for portfolio management, due diligence, and sourcing of unique investment opportunities for Mercy's \$3B investment portfolio. Elizabeth also leads Mercy's socially responsible investing initiative. Elizabeth previously served as an Assistant Vice President of Investments at Allied World, a publicly-traded P&C insurance company with a \$9B investment portfolio. Prior to Allied World, she was an investment strategist at Prime Advisors, a core fixed-income asset manager. Elizabeth is Vice President & Co-Founder of the St. Louis Women in Investments Network (STLWIN). She is also a member of the Archdiocese of St. Louis's investment committee, and a board member for the CFA Society St. Louis. Elizabeth received her BA from Babson College (Boston, MA) and is a CFA charterholder. She was honored to be an Institutional Investor 2019 'Next Gen' finalist and 2019 'Most Wanted Allocator', and included in AI-CIO Magazine's 2016 '40 Under 40' and 2019 'Next Gen' Lists.



### > Sarah Kim

Partner, Clayton, Dubilier & Rice, LLC

Ms. Kim joined CD&R in 2008 and focuses on investments in healthcare. She played a key role in the Firm's acquisition and subsequent sale of Diversey, the public and secondary offerings of HD Supply and ServiceMaster, and the Firm's investments in David's Bridal, naviHealth, and Vets First Choice (now Covetrus). She serves as on the board of directors of naviHealth. Previously, she held positions at private equity firms Metalmark Capital and McCown De Leeuw & Co. and worked in the investment banking division of Goldman Sachs & Co. She holds an M.B.A. from Harvard Business School, a J.D. from Harvard Law School, and a B.A. in economics and political science from Yale University.





## ➤ Ginger Lew

Managing Director, Cube Hydro Partners

.Ms. Lew is the Managing Director of Cube Hydro Partners, a renewable clean energy company which she co-founded. She is also senior advisor to I Squared Capital, a \$13 billion private equity global infrastructure fund. Under the Obama Administration, Ms. Lew was Senior Counselor to the White House National Economic Council. She was the policy author of two major initiatives: regional innovation clusters and the expanding the role of women in the economy, domestically and internationally. Under the Clinton Administration, Ms. Lew was the Deputy Administrator and Chief Operating Officer of the U.S. Small Business. Ms. Lew also was the General Counsel at the U.S. Department of Commerce where she specialized in international trade issues. Ms. Lew was unanimously confirmed by the United States Senate for both positions. Ms. Lew currently serves on three private company boards and has served on publicly listed corporate boards. She is also on the Smithsonian Institute SITES board. She is the co-founder of the Association of Asian American Investment Managers (“AAAIM”), a national trade association of Asian American fund managers.



## ➤ Kathryn M. Regan

Partner, Landmark Partners

Kathryn Regan is a partner in Landmark Partners’ private equity group. She is engaged in the underwriting, negotiation and execution of Landmark’s private equity investments.

Since joining Landmark in 1999, Ms. Regan has had an active role in the evaluation and investment recommendations for Landmark’s private equity secondary funds spanning 2002 to the present. Ms. Regan has played a direct role in investing the Firm’s capital through portfolio acquisitions, fund recapitalizations, joint venture partnerships, SBA buyouts and primary commitments. Ms. Regan also leads the Quantitative Research Group’s LIVE Program and focuses on a number of internal projects aimed at best practices and information management. She currently serves on the Board of Directors for the Women’s Association of Venture and Equity (WAVE) and Advisory Board of funds managed by Alta Partners and Edison Partners.

Ms. Regan received an MBA from New York University – Leonard N. Stern School of Business and a BA from Villanova University.

# PANEL 2A 9:25AM-10:10AM

## Learning from the Experts: Breaking into Alternative Investments



### > Moderator: Laura Hill

Vice President, Alternative Investments, Advocate Aurora Health

Laura Hill is Vice President, Alternative Investments, at Advocate Aurora Health. Ms. Hill develops and manages AdvocateAurora's alternatives portfolio, comprised of private equity, private credit, real assets, and hedge funds. Prior to joining Advocate in 2014, Ms. Hill was a Vice President at Denali Capital LLC, a leveraged loan asset manager in Oak Brook, IL, where she managed a portfolio of senior secured bank loans, with an emphasis on middle market sponsor-backed transactions. Laura joined Denali from the Transaction Advisory Services group at Ernst & Young LLP in Chicago, IL. Laura received a B.S. in Business Economics & Public Policy from Indiana University in 2002 and an MBA from Northwestern University in 2010.



### > Caitlin Fitzmaurice

Managing Director, UVIMCO

Caitlin Fitzmaurice is a managing director at UVIMCO, with co-head responsibility for venture capital and growth equity investments.

She serves as a member of UVIMCO's investment committee and is involved in all aspects of the investment process. Caitlin joined UVIMCO in July 2014.

Prior to joining UVIMCO, Caitlin spent three years as an Investment Director with Cambridge Associates in Arlington, Virginia where she advised several universities and non-profit foundations on asset allocation, manager selection, and portfolio management of their endowments. Prior to Cambridge Associates, Caitlin worked for the Chief Investment Officer at Kingdon Capital Management, a long/short equity hedge fund based in New York City, and began her career on the institutional equity sales desk at Goldman Sachs.

Caitlin received a B.S. in finance and accounting from Georgetown University and an M.B.A degree from the Darden School of Business at the University of Virginia.



### > Winnie Liu

Vice President, Lindsay Goldberg

Winnie is a Vice President at Lindsay Goldberg. She joined the firm after earning her MBA at Harvard Business School. Previously, she worked at The Carlyle Group as an Associate. She began her career as an Investment Banking Analyst at Lazard after graduating from Harvard University with a BA in Economics.

Winnie is a member of the board of directors of Golden West Packaging Group and Pixelle Specialty Solutions and is also actively involved in Lindsay Goldberg's investments in Crown Paper Group and Stelco.



## ➤ Stewart Long Davis

Senior Associate, Roark

Stewart is a Senior Associate at Roark Capital Group in Atlanta, GA. She is actively involved in Roark's investment in Drybar and FOCUS Brands, most recently completing the acquisition of Jamba Juice. Prior to joining Roark, Stewart worked as an Associate at L-Catterton, a private equity firm in Greenwich, CT where she was involved in the firm's investments in SteelSeries gaming peripherals and John Hardy jewelry. She began her career at Goldman Sachs, where she worked in the firm's New York-based Consumer/Retail Investment Banking Group on deals such as the sale of Stuart Weitzman and Totes-Isotoner, and purchase of Ragu and Bertolli pasta sauces from Unilever, MyFitnessPal by Under Armour, and Alliance Boots by Walgreens. Stewart graduated Phi Beta Kappa with a B.A. in Literature and minors in Business and History from the Honors College at UNC Chapel Hill where she was also a member of the Division I Varsity Fencing team. Stewart is a dual citizen of the U.S. and U.K., an active member of Trinity Anglican Church in Atlanta, and serves on the board of the East African Children's Education Fund. In her free time she enjoys sailing, fly fishing, and golf with her husband, William, and puppy, Fitz Roy.



## ➤ Alexa von Tobel

Managing Partner, Inspired Capital

Alexa von Tobel, CFP® is founder and managing partner of Inspired Capital, the New York Times-Bestselling Author of Financially Fearless and Financially Forward, and the host of the podcast Inc.'s The Founders Project with Alexa von Tobel.

Prior to Inspired Capital, Alexa founded LearnVest in 2008 with the goal of helping people make progress on their money. After raising nearly \$75 million in venture capital, LearnVest was acquired by Northwestern Mutual in May 2015 in one of the biggest fintech acquisitions of the decade. Following the acquisition, von Tobel joined the management team of Northwestern Mutual as the company's first-ever Chief Digital Officer, overseeing digital strategy. She later assumed the role of Chief Innovation Officer through which she oversaw Northwestern Mutual's venture arm.

Alexa has appeared on the cover of Forbes Magazine, been interviewed on NPR's How I Built This and been featured in a wide variety of publications from The New York Times to Vogue. She is a member of the 2016 Class of Henry Crown Fellows and an inaugural member of President Obama's Ambassadors for Global Entrepreneurship. Alexa has been honored with numerous recognitions including: Fortune's 40 Under 40, Fortune's Most Powerful Women, Forbes' 30 Under 30, Inc. Magazine's 30 Under 30 and World Economic Forum's Young Global Leader.

Originally from Florida, Alexa attended Harvard College and Harvard Business School before settling in New York City where she currently resides with her husband, Cliff Ryan, and their three children.

# PANEL 2B 9:25AM-10:10AM

## Learning from the Experts: Introduction to Careers' within Alternative Investments



### > Moderator: Nicola Halsall Idehen

Chief Human Resources Officer, The Vistria Group

Prior to joining Vistria, Ms. Idehen was the Head of Talent Development at GCM Grosvenor. She was previously a Director at Management Leadership for Tomorrow and a hedge fund product specialist at Lehman Brothers/Neuberger Berman. Ms. Idehen began her career at the JP Morgan Private Bank, where she was a fixed income product specialist for both the discretionary and non-discretionary fixed income businesses.

Ms. Idehen received a B.A. in Economics from Yale University and an M.B.A from Harvard Business School.



### > Roanne Daniels

H&F Partner (Operating Group), Hellman & Friedman

Ms. Daniels is a Partner of H&F in the San Francisco office and is focused on helping the Firm drive value by improving the operational effectiveness of H&F's portfolio companies. Prior to joining the Firm in 2017, she worked as an Operating Partner at Bain Capital in Boston and London, where she spent over 11 years. Prior to joining Bain Capital, Ms. Daniels worked as a consultant at McKinsey & Company consulting with major clients in the healthcare and consumer products industries. She was also a correspondent and editor at Reuters. Ms. Daniels graduated from the University of Virginia and earned an MBA from the Harvard Business School.



### > Angela McCoy

Vice President, PSP Capital Partners

Angela McCoy is a Vice President in the Private Investments group of PSP Capital, the family office for Penny Pritzker. In that role, Angela is responsible for sourcing and executing new investment opportunities as well as providing portfolio company oversight, with a primary focus on the food and consumer sectors. She currently serves on the board of two PSP portfolio companies. Prior to joining PSP Capital in 2011, she spent over four years in the Leveraged Finance group at Bank of America Merrill Lynch, where she helped to structure and execute a variety of capital markets transactions that supported leveraged buyouts, corporate-to-corporate acquisitions, balance sheet restructurings, and other strategic debt financing initiatives. She earned a Bachelor of Science degree in Finance, with a minor in International Studies, from Wake Forest University. She currently serves on the Steering Committee for the Midwest Chapter of the Women's Association of Venture and Equity (WAVE) and is a member of the Private Equity Women Investor Network (PEWIN).



## ➤ Lana Lewin

Managing Director, Credit Suisse

Lana Lewin is a Managing Director of Credit Suisse, based in New York. In January 1997, she joined Donaldson, Lufkin & Jenrette, which subsequently merged with Credit Suisse. Throughout her tenure at the Firm, Ms. Lewin has been a member of the Asset Management division's Private Fund Group, which advises and raises capital for private investment funds.

Prior to DLJ, Ms. Lewin worked as a strategy consultant at Monitor Company, Inc., in marketing at Time Warner Inc., and in the investment banking division at Goldman, Sachs & Co.

Ms. Lewin holds a B.A. degree in Political Science and Economics, Phi Beta Kappa, with honors from the University of North Carolina at Chapel Hill and an M.B.A. with distinction from Harvard Business School. She serves on the Board of Directors of Planned Parenthood of New York City, where she chairs the endowment's investment committee. An avid runner and triathlete, Ms. Lewin lives in Manhattan with her husband and son.



## ➤ Francesca Whitehead

Associate, Global Impact Team, KKR

Francesca is a member of the KKR Global Impact Fund and is focused on investing in the Clean Tech sector. Prior to joining KKR, Francesca was at Goldman Sachs in their Natural Resources Leveraged Finance Investment Banking group. During her time at Goldman, she was actively involved in diversity recruiting efforts. Francesca also participated in the GS Analyst Impact Fund competition, which was featured on Yahoo Finance, and won \$100k in funding for NewStory—a non-profit focused on ending homelessness in developing countries. Outside of work, Francesca volunteers at Animal Haven and is applying to the junior council of the American Museum of Natural History and to be a young patron member for the Asia Society. Francesca has a B.A in Economics from Brown University and is from Hong Kong.

# PANEL 3 10:30AM-11:15AM

## Male Perspectives on Diversity



### > Moderator: Chris Keller

Partner and Portfolio Manager, Archean Capital Partners

Chris is a Managing Director at Moelis Asset Management and serves as co-portfolio manager of Archean Capital Partners, a fund focused on anchoring first-time private equity funds. He was previously with Summit Strategies Group, an institutional investment consultant, where he was a Managing Director, Head of Research and Head of Private Markets for 11 years. Chris is a Kauffman Fellow, a CFA® charterholder, and received an MBA from Washington University in St. Louis and an undergraduate degree in Molecular Biology from The University of Colorado.



### > Ryan Bailey

Managing Partner, Pacenote Capital

Ryan Bailey is a Managing Partner at Pacenote Capital where he oversees fund sourcing and research efforts. Pacenote Capital is focused on partnering with preeminent emerging investment managers.

Previously, Ryan functioned as the Head of Investments at Children's Health System of Texas, managing the investment strategy of \$1.8 billion in assets for the Hospital's pension, foundation, operating cash, and long term pools. As the Hospital's inaugural investment officer, Ryan established the department, designing and implementing the systems, processes, and governance structures required in the formation of a top tier endowment office.

Prior to Children's Health, Ryan served as Investment Officer and Interim CIO of the Meadows Foundation. In this capacity, he drove the due diligence process, aided the development of strategic asset allocation, and constructed and implemented investment strategy to achieve competitive performance.

Ryan graduated from Yale University with a Bachelor of Arts degree in Economics. He holds a number of certifications including: Chartered Financial Analyst (CFA), Financial Risk Manager (FRM), Chartered Alternative Investment Analyst designation (CAIA), and Chartered Market Technician (CMT) designations. In 2000, he founded a trading company located on the 83rd floor of World Trade Center One and later, after surviving the events on 9/11, relocated to Dallas, Texas. Ryan was featured in the June 2011 issue of D magazine, was named one of the 40 under 40 in the April 2015 edition of Asset International—Chief Investment Officer Magazine (aiCIO), was also a finalist for the aiCIO's 2015 Next Generation Award and received the Institutional Investor 2016 Investor Intelligence Award recognizing Healthcare Institutions for Portfolio Construction. He was a finalist for CIO Magazine's Industry Innovation Award for Healthcare 2017 and the 2018 winner of Institutional Investor's Healthcare System of the Year Award. Ryan currently serves as a Director on the board of Blue Dolphin Energy (BDCO), Board Member for the Texas Hedge Fund and is an Angel for the Texas Wall Street Women.



## ➤ Darren Friedman

Partner, Stepstone Group

Mr. Friedman is a member of the private equity team, focusing on global buyouts and co-investments. He is also involved in various investment and advisory activities.

Before joining StepStone in 2010, Mr. Friedman was a managing partner at Citi Private Equity, a \$10 billion equity co-investment, mezzanine and fund of private equity funds business. Previously he worked in the investment banking division at Salomon Smith Barney, where he managed the firm's relationships with private equity funds and their portfolio companies, completing numerous capital market and M&A transactions.

Mr. Friedman received his BS from the University of Illinois and MBA from the Wharton School of the University of Pennsylvania.



## ➤ George Suttles

Director of Research, Commonfund Institute

George Suttles supports Commonfund's educational, market research, and professional development activities as Director of Research of Commonfund Institute. He also serves as a member of the Commonfund Diversity and Inclusion Office. Prior to joining Commonfund, George was a Program Officer at the John A. Hartford Foundation, an independent, national private foundation focused on improving care for older adults. Before joining the foundation, he was a Vice President, Senior Philanthropic Relationship Manager at U.S. Trust/Bank of America. In this role he worked with private and institutional clients on issues related to best practices in strategic grantmaking. He is also a member of numerous nonprofit boards, including the New York Foundation where he serves on the Investment Committee. Currently, he is on the Adjunct Faculty at the New York University (NYU) School of Professional Studies. George received a B.A. from Wesleyan University, an M.A. in Philanthropic Studies from Indiana University Lilly Family School of Philanthropy (IUPUI) and an M.P.A. from Baruch CUNY School of Public Affairs.



## ➤ Gero Wittemann

Partner, Hg

Gero is a partner, co-leading the New York office having joined the firm in 2018.

He was previously a Managing Director at CVC, where he spent the previous 15 years and was part of the team that started the firm's expansion into North America. Gero was involved with a number of CVC's investments, including Univar and Pilot Flying J.

A fluent speaker of German, English and French, he graduated from WHU Otto Beisheim Graduate School of Management with a master's degree in business administration and also attended the Olin Graduate School of Business at Washington University and HEC Lausanne.



# ROUNDTABLE CAPTAINS\*

Ryan Ackell - Associate, New Mountain Capital  
Kristin Agatone - Chief Investment Officer, Lehigh University Endowment  
Nick Antoine - Managing Partner, Red Arts Capital  
Shalini Bala Subramaniam - Managing Director, Clearlake Capital Group, L.P.  
Danielle Beyer - Principal in Investor Relations, Valor Equity Partners  
Damali Bond - Managing Director, Park Hill  
Jim Bonetti - Managing Director, GTCR  
Yue Bonnet - Director, KKR  
Gregory Boyer - Managing Director, CenterGate Capital, L.P.  
Meredith Breach - Senior Associate, Vista Equity Partners  
Elizabeth Broomfield - Investment Professional, Hg  
Sarah Camougis - Partner, Choate, Hall & Stewart  
Patricia Chalian - Principal, M2O Private Fund Advisors  
Sabrina Chu - Senior Associate, Roark Capital  
Clodagh Coghlan - Private Equity Sr. Associate, StepStone Group  
Kristi Craig - Director, Georgetown University Investment Office  
Sancia Dalley - Senior Vice President, Strategic Partnerships, RFK Human Rights  
Neda Daneshzadeh - Partner, Prelude Growth Partners  
Roanne Daniels - H&F Partner (Operating Group), Hellman & Friedman  
Susi Daniels - H&F Partner & Head of Investor Relations, Hellman & Friedman  
Elizabeth Driscoll - Analyst, Funds and Co-Investments , Barings  
Allyson Estey - Associate, Vista Equity Partners  
Ezra Field - Managing Director, Roark Capital  
Caitlin Fitzmaurice - Managing Director, UVIMCO  
Jessie Gabriel - Partner, Baker & Hostetler LLP  
Tara Gadgil - Principal, Thoma Bravo  
Trish Gilbert - Chief Talent Officer, Wind Point Partners  
Dana Goldstein - Managing Director of Investor Relations, Levine Leichtman Capital Partners  
Jeanette Gorgas - Chief Human Capital Officer, Valor Equity Partners  
Mark Gudis - Managing Partner, Backcast Partners  
Priscilla G. Guevara - Head of Investor Relations, Science Inc.  
Nicola Halsall Idehen - Chief Human Resources Officer, The Vistria Group  
Tracy Harris - Partner, Investor Relations & Product Strategy, Siris Capital Group  
Demi Haupt - Vice President, Human Capital, Linden  
Sharon Healey - Director of Human Resources, Boston Partners  
Adi Herzberg - Director, Asset Management, Credit Suisse  
Laura Hill - Vice President, Alternative Investments, Advocate Aurora Health  
Afaf Ibraheem Warren - Vice President, Siris Capital Group  
Amy Johannes - Managing Director in Real Estate, Oaktree  
Dana Johns - Senior Portfolio Manager, Maryland State Retirement and Pension System  
Finley Johns - Principal, Quilvest Private Equity  
Elizabeth Jourdan - Deputy Chief Investment Officer, Mercy Health System  
Sharmila Kassam - Advisor, Funston Advisory Services  
LeAnn Kilarski - COO, CFO, CCO, Wind Point Partners



Sarah Kim - Partner, SKH Capital, LLC  
Jill Kitazaki - President, Denning and Company, LLC  
Ashley Knight - Investment Associate, Mercer  
Katie Kornel - Director in the Private Fund Group (PFG), Asset Management, Credit Suisse  
Tiffany Kosch - Managing Director, CenterGate Capital, L.P.  
Laura Krivacek - Private Equity Associate, StepStone Group  
Natasha Latif - Vice President, The Vistria Group  
Holly Lau - Credit Treasurer, New Mountain Capital  
Jennifer Lee - Vice President, Edison Partners  
Leslie Lenzo - Senior Vice President, Investments, Advocate Aurora Health  
Samantha Levenstein - Investor Relations, Beach Point Capital Management  
Gideon Lowin - Principal, Clayton Dubilier & Rice  
Jane Ma - Executive Director, Moelis & Company  
Loretta McCarthy - Managing Partner, Golden Seeds  
Sheryl Mejia - Partner, Decagon Advisors  
Marietta Moshivashvili - Managing Partner & CEO, Upper Bay Infrastructure  
Melissa Mounce - Managing Director, Leadership Talent, GTCR  
Catherine Ngai - Senior Associate, Cove Hill Partners  
Hong Nguyen - Director, RSM US LLP  
Nicole North - Partner, Lightspeed Venture Partners  
Lara Nosseir - Associate, Business Development, New Mountain Capital  
Carmen Ortiz-McGhee - Executive VP, National Association of Investment Companies (NAIC)  
Jessica Pan - Portfolio Manager, APG Asset Management US Inc.  
Namrita Rai - Vice President, Providence Strategic Growth  
Katheryn Regan - Partner, Landmark Partners  
Kylie Richards - Associate, Madison Dearborn Partners  
Michael Romano - Partner, Lightspeed Venture Partners  
Charlotte Ross - Principal, Inspired Capital  
Jennifer Schmelter - Advisor, Windrose Advisors  
Sheryl Schwartz - Managing Director, Flexstone Private Equity  
Bridget Schweih's - Senior Associate, 50 South Capital  
Lauren Seidman - Vice President, Stone Point Capital  
Stacey Sheeley - Partner, RSM US LLP  
Tina Sodhi - Partner, Triago  
Ali Soloff - Associate, Snow Phipps  
Alicia Sontag - Partner, Prelude Growth Partners  
Christina Staib - President, Tarcoola Ventures LLC  
Kallie Steffes - Founding Partner, Chalk Point Capital LP  
Betsy Sylvester - Director, Castlelake, L.P.  
Michael Tesser - Principal, Clayton Dubilier & Rice  
Allison Walker - Chief Talent Officer, FTV Capital  
Elizabeth (Scottie) Wardell - Managing Partner, Integrity Growth Partners  
Max Wein - Vice President, Snow Phipps  
Elizabeth Weindruch - Managing Director, Barings  
Gero Wittemann - Partner, Co-Head of Hg's New York Office, Hg  
Wendy Xu - Director of Private Equity, Rockefeller Capital Management  
Min Zhou - Vice President, Landmark Partners



Career  
**Expo Map**



# CAREER EXPO MAP



- 17 CFA Society New York
- 18 Charlesbank Capital Partners
- 19 Cove Hill Partners
- 20 Edison Partners
- 21 Excelsior Energy Capital
- 22 Falk Marques Group
- 23 Flexpoint Ford
- 24 FTV Capital
- 25 Goldman, Sachs & Co
- 26 Hilton
- 27 Integrity Growth Partners
- 28 Kayo Conference Series
- 29 Kinzie Capital Partners
- 30 Levine Leichtman Capital Partners
- 31 Linden Capital Partners
- 32 Martin J. Whitman School of Management, Syracuse University
- 33 MiddleGround Capital
- 34 Moelis & Company
- 35 NYU Stern School of Business
- 36 Oaktree Capital Management
- 37 Peak Rock Capital
- 38 Prelude Growth Partners
- 39 Providence Strategic Growth/ Providence Equity Partners
- 40 Red Arts Capital
- 41 Red Reef Partners
- 42 RFK Human Rights
- 43 RSM US
- 44 Science Inc.
- 45 Searchlight Capital Partners
- 46 Siris Capital Group
- 47 Snow Phipps Group
- 48 Stone Point Capital
- 49 The University of North Carolina at Chapel Hill
- 50 The Vistria Group
- 51 THL Capital
- 52 Thoma Bravo
- 53 UVIMCO
- 54 Valor Equity Partners
- 55 Wind Point Advisors

- 1 Landmark Partners
- 2 Lightspeed Venture Partners
- 3 Lindsay Goldberg
- 4 Clayton, Dubilier & Rice
- 5 Hellman & Friedman
- 6 Hg
- 7 Roark Capital Group
- 8 StepStone Group
- 9 Vista Equity Partners
- 10 Credit Suisse
- 11 GTCR
- 12 50 South Capital
- 13 Adams Street Partners
- 14 Backcast Partners Management
- 15 Barings
- 16 CenterGate Capital



# Expo **Sponsors**

## Company

## Company Description



50 South Capital Advisors LLC is the alternative assets subsidiary of Northern Trust, headquartered in Chicago. We manage various investment programs, including funds-of-funds, funds-of-one, and custom accounts. As a subsidiary of Northern Trust Corporation, 50 South Capital leverages the global reach and expertise of Northern Trust to be a value-added partner. The group's founding team still leads the firm.

Since our founding in 2000, we have executed a fund of funds strategy focused on the most inefficient subsectors in private equity and venture capital. Our program focuses on small and middle market buyout managers in North America and Europe as well as early stage venture capital managers in North America, Asia and Europe which we continue to believe offer investors the best risk adjusted return within the asset class.



Adams Street Partners ("Adams Street") is a global private markets investment manager, operating in more than thirty countries across five continents. Adams Street prides itself on the depth and breadth of its global investment capabilities, and its long-standing reputation as an innovator within the private markets space. With over \$37 billion of assets under management, Adams Street has 10 offices and the firm operates as a single global team and incorporates the skill and experience of its investment professionals across five strategies: primary, secondary, venture/growth, private credit and co-investments.

As an employee-owned firm, Adams Street believes in a culture of inclusiveness and collegial achievement, and strives to deliver the highest standards of integrity, respect and insight within all aspects of our business. Adams Street's guiding principles and collaborative environment drive the firm's commitment to providing exceptional client service and top tier investment returns.



Backcast Partners provides direct investments of debt and equity capital in support of North American middle market businesses with annual EBITDA of \$10 million to \$50 million. Backcast works closely with management teams and private equity sponsors to understand the future they envision for their businesses in order to form customized solutions. After carefully listening, the team introduces value-additive capabilities, including highly flexible capital solutions, industry relationship introductions, and a network of 50+ corporate operating partners—a roster of successful current and former senior operating executives from a vast array of industries. Backcast has offices in New York, Millburn, N.J., and Los Angeles. The firm was founded by veteran mid-market executives Ed Cerny, Dave Petrucco, and Mark Gudis, who have worked and invested together for nearly 20 years at leading credit platforms including the Blackstone Group, Kayne Anderson, and SAC Capital.



Barings is a \$325+ billion\* global financial services firm dedicated to meeting the evolving investment and capital needs of our clients and customers. Through active asset management and direct origination, we provide innovative solutions and access to differentiated opportunities across public and private capital markets. A subsidiary of MassMutual, Barings maintains a strong global presence with business and investment professionals located across North America, Europe and Asia Pacific.

\*As of June 30, 2019



By seeking out situations where complexity may deter other investors and obscure intrinsic value, and working closely with management to implement growth strategies, Blue Wolf Capital Partners positions companies to thrive over the long-term. Combining Environmental, Social, and Governance (ESG) principles with a commitment to strategic and operational excellence, we make control investments in middle market businesses. Our team partners play a hands-on role to develop a strategic, profitable, and market-responsive plan to generate value, bring key stakeholders together including labor, government, employees, and the surrounding community, and apply rigorous attention to operational improvement and accelerated change.



The Chartered Alternative Investment Analyst (CAIA) Association, a non-profit organization founded in 2002, is the world leader in alternative investment education. CAIA Association is best known for the CAIA Charter. Earning the CAIA Charter is the gateway to becoming a Member of the CAIA Association, a network of more than 11,000 alternative investment leaders located in 95+ countries. CAIA also offers the Fundamentals of Alternative Investments certificate program, an online course that provides an introduction to alternative investing. CAIA is considered a leading authority on industry trends and developments worldwide. For more information, please visit [CAIA.org](http://CAIA.org).



Castlelake, L.P. is a global private investment firm managing private funds with approximately \$13.7 billion\* in assets on behalf of endowments, foundations, public and private pension plans, private funds, family offices, insurance companies and sovereign wealth funds. We are a relationship-oriented, preferred liquidity provider in complex, small-to-mid-size, asset-based opportunities.

## Company

## Company Description



CenterGate Capital is a private equity firm focused on improving and growing lower middle market companies. In order to realize their potential, these companies need flexible capital, strategic guidance and strong management teams. We bring together a balance of transactional and operational experience along with a network of advisors and strategic relationships, which provide our portfolio companies with exceptional resources.

CenterGate Capital's goal is to realize shareholder value for our investors and all other stakeholders of our portfolio companies. Our holistic approach to value creation utilizes proven best practices to identify market opportunities, offer tailored investment structures and serve as active board members. We advise our portfolio companies on team building, strategic acquisitions, geographic expansion, operations improvement, KPI management and financial reporting.



Since 1937, CFA Society New York (CFANY) has sought to raise the standards of the investment industry through global insight, a dynamic community of local investment management professionals, and thought leadership. CFANY's mission is to raise the bar in investment management wherever possible and help establish the course for where the investment industry is headed.

CFANY is a leading voice within a network of CFA Societies in 150 global financial markets, representing over 165,000 CFA Institute members world-wide. CFANY works in conjunction with CFA Institute to develop the industry's future professionals and to raise the standards of professionalism in the investment management industry.

With over 12,000 members, CFANY is the largest CFA Institute member society in the world. For more information about CFA Society New York or to learn how to become a member, please visit our website at [www.cfany.org](http://www.cfany.org).



Chalk Point Capital LP is an opportunistic private equity investor focused on complex, off-the-run private investment opportunities. The firm brings a solution capital orientation to the lower/middle market with the goal of partnering with sellers of companies or assets to address their specific needs.



Based in Boston and New York, Charlesbank Capital Partners is a middle-market private equity investment firm managing more than \$5 billion of capital. Charlesbank focuses on management led buyouts and growth capital financings and also engages in opportunistic credit and technology investments. The firm seeks to partner with strong management teams to build companies with sustainable competitive advantage and excellent prospects for growth.



Founded in 1978, Clayton, Dubilier & Rice employs a distinctive approach to private equity investing, combining financial and operating capabilities to build businesses. CD&R works to make companies grow and prosper. Often we partner with families, founders, or corporate owners. The vast majority of the value we create results from strong collaborations with management to spur operational performance improvements by accelerating growth strategies, injecting new talent, and boosting productivity. The Firm stands on a reputation for problem-solving, managing complex transactions, and always doing what we say we will do.



Clearlake Capital Group, L.P. is a leading private investment firm founded in 2006. With a sector-focused approach, the firm seeks to partner with world-class management teams by providing patient, long-term capital to dynamic businesses that can benefit from Clearlake's operational improvement approach, O.P.S.®. The firm's core target sectors are software and technology-enabled services; industrials and energy; and consumer. Clearlake currently has over \$10 billion of assets under management and its senior investment principals have led or co-led over 200 investments.



Cove Hill Partners is a long-duration oriented private equity firm with over \$1 billion in commitments focused on building market-leading consumer and technology companies through partnership with outstanding management teams. Cove Hill's leadership team has deep expertise investing in SaaS, consumer internet, consumer marketplace, and franchised business models, and experience creating value through partnering with management teams on initiatives like go-to-market strategy, M&A, digital marketing, and pricing. The Firm also has an advisory board, made up of 30+ founders and executives from businesses like Domino's Pizza, Tinder, Shake Shack, and Deliveroo, that assists in providing mentorship and guidance regarding both potential investments and current portfolio companies.

Cove Hill was founded in 2017 by seasoned technology and consumer private equity investors, led by Andrew Balson, a 17-year veteran of Bain Capital. Since inception, the Firm has made investments in Storable, Gamma Technologies, LiveAuctioneers, and NetDocuments.



Credit Suisse is a leading global wealth manager with strong investment banking capabilities. Headquartered in Zurich, Switzerland, we have a global reach with operations in about 50 countries and employ more than 45,000 people from over 150 different nations. Embodying entrepreneurial spirit, Credit Suisse delivers holistic financial solutions to our clients, including innovative products and specially tailored advice. Striving for quality and excellence in our work, we recognize and reward extraordinary performance among our employees, provide wide-ranging training and development opportunities, and benefit from a diverse range of perspectives to create value for our clients, shareholders and communities.



Company

Company Description



Denning & Company LLC is a FINRA registered global private equity advisory firm headquartered in San Francisco, California. Founded in 2001, Denning & Company, LLC provides bespoke consulting, marketing, and fundraising services to established general partners as well as new teams offering unique investment ideas to limited partner investors worldwide. With over 75 years of combined industry experience, the Denning and Company team has raised capital in excess of \$14 billion for general partners based in the U.S., Japan/Asia, UK/Europe, Russia, and Israel from a limited partner base similarly diversified.



For more than 30 years, Edison Partners has been helping CEOs and their executive teams grow and scale successful companies. The firm's investment team brings extensive investing and operating experience to each investment. Through a unique combination of growth capital and the Edison Edge platform, consisting of operating centers of excellence, the Edison Director Network, and executive education programs, Edison employs a truly integrated approach to accelerating growth and creating value for businesses. A team of experts in financial technology, healthcare IT and enterprise solution sectors, Edison targets high-growth companies with USD \$5 million to \$25 million in revenue; investments also include buyouts, recapitalizations, spinouts and secondary stock purchases. Edison's active portfolio has created aggregated market value exceeding USD \$10 billion. Edison Partners is based in Princeton, N.J. and manages more than USD \$1.4 billion in assets throughout the eastern United States.



Excelsior Energy Capital is a pure-play renewable energy infrastructure fund focused on long-term investments in operating wind and solar power plants in North America. The Excelsior Energy Capital team has a proven track record, as a group executing over \$2.5 billion of equity investments across 2 GW of operating wind and solar projects. The team brings a comprehensive set of financial, legal, strategic and operational expertise – making Excelsior Energy Capital a valuable partner for developers and operators, and a trusted manager for investors.



Falk Marques Group develops and produces professional conferences, insightful industry news and event content, and unmatched networking opportunities for an international audience of senior-level decision makers in private equity, venture capital, and alternative investments.

Our highly acclaimed Women's Private Equity Summit and Women's Alternative Investment Summit are the cornerstones of our success. These annual industry events attract more than 600 and 450 attendees, respectively, bringing together institutional investors, fund managers, and advisors to the industry for an honest exchange of business ideas and information, invaluable networking, and unrivaled dealmaking. The Women's Leadership Unbound Summit, launched in September 2019, provides women leaders with an actionable roadmap to enhance their value to their firms and advance to the next level of power.

Falk Marques Group also publishes a weekly e-newsletter, Women's PE Briefs, which showcases the achievements of women in private equity and venture capital.

For more information, visit [www.falkmarquesgroup.com](http://www.falkmarquesgroup.com).



With offices in Chicago and New York, Flexpoint Ford is a private equity investment firm that has raised more than \$4.3 billion in capital and specializes in investments in the healthcare and financial services industries. Flexpoint Ford is uniquely flexible with respect to investment size, structure and asset class. Since the firm's formation in 2005, Flexpoint Ford has completed investments in more than 30 companies including investments in minority and majority structures in both private and public companies, and in a wide range of transaction types, including buyouts, growth investments and turnarounds. In July 2019, Flexpoint Ford announced the closing of its fourth private equity fund, Flexpoint Fund IV, L.P., along with a companion fund, Flexpoint Overage Fund IV, L.P. Total committed capital between the Funds is \$2.0 billion, with \$1.5 billion in Fund IV and \$500 million in Overage Fund IV.



As a leading growth equity investor for over 20 years, FTV Capital has raised over \$2.7 billion to invest in high-growth companies offering a range of innovative solutions in three sectors: enterprise technology & services, financial services, and payments & transaction processing. FTV's experienced team leverages its domain expertise and proven track record in these sectors to help motivated management teams accelerate growth. FTV also provides companies with access to its Global Partner Network, a group of the world's leading enterprises and executives who have helped FTV portfolio companies for nearly two decades. Founded in 1998, FTV Capital has invested in over 100 portfolio companies and has offices in San Francisco and New York.



The Goldman Sachs Group, Inc. is a leading global investment banking, securities and investment management firm that provides a wide range of financial services to a substantial and diversified client base that includes corporations, financial institutions, governments and high-net-worth individuals.

The Alternative Investments & Manager Selection (AIMS) Group provides investors with investment and advisory solutions, across leading hedge fund managers, private equity funds, real estate managers, public equity strategies and fixed income strategies. The AIMS Group manages globally diversified programs, targeted sector-specific strategies, customized portfolios, and a range of advisory services. Our investors access opportunities through new fund commitments, fund-of-fund investments, strategic partnerships, secondary-market investments, co-investments, and seed-capital investments. The AIMS Group provides manager diligence, portfolio construction, risk management, and liquidity solutions to investors, drawing on Goldman Sachs' market insights and risk management expertise. We extend these global capabilities to the world's leading sovereign wealth funds, pension plans, governments, financial institutions, endowments, foundations, and family offices, for which we invest or advise on over \$150 billion of alternative investments, public equity strategies and fixed income strategies.

## Company

## Company Description



Great Hill Partners is a Boston-based private equity firm targeting investments of \$25 million to \$500 million in high-growth companies across the consumer, digital infrastructure, financial technology, healthcare, and software sectors. Over the past two decades, Great Hill has raised nearly \$8 billion of commitments and invested in more than 75 companies, establishing an extensive track record of building long-term partnerships with entrepreneurs and providing flexible resources to help middle-market companies scale. For more information, visit [www.greathillpartners.com](http://www.greathillpartners.com).



Founded in 1980, GTCR is a leading private equity firm focused on investing in growth companies in the Growth Business Services, Technology, Media & Telecommunications, Healthcare and Financial Services & Technology industries. The Chicago-based firm pioneered The Leaders Strategy™ – finding and partnering with management leaders in core domains to identify, acquire and build market-leading companies through transformational acquisitions and organic growth. Since its inception, GTCR has invested more than \$15 billion in over 200 companies. For more information, please visit [www.gtcr.com](http://www.gtcr.com)



Hellman & Friedman is a large cap, private equity firm with offices in San Francisco, New York, and London. We take a concentrated approach to investing, looking to make a few, high conviction investments each year in high quality, growing businesses in the developed markets. Founded in 1984, we have raised over \$50 billion of committed capital throughout our 30-year history. We are currently investing our ninth fund, with \$16.5 billion of committed capital.

We are deeply invested in the success of our companies and believe that people thrive when they are working toward a common and focused goal. Our approach is based on a collaborative style with management, grounded in deep sector expertise across our core sectors. As the largest investor in our most recent fund, we believe our focus and significant skin in the game allows us to create better alignment with both our companies and our investors.



Hg is a specialist private equity investor, committed to building businesses that change the way we all do business, through deep sector specialisation and dedicated operational support.

We have built a team of 180 people over 25 years to become Europe's largest investor in software and services, with increasing global presence, being named the most active global technology PE investor for 2018.

Based in London, Munich and New York, Hg has FuM of \$12 billion, serving some of the world's leading institutional and private investors.

It has never been a more exciting time to be part of Hg. The firm now looks at deals between \$20 million to \$4 billion, partnering with the teams we invest in, leveraging Hg's network as a tool for knowledge-sharing across businesses. This has resulted in an impressive track record, across market cycles, with c. \$9 billion of software and services proceeds returned at 2.6x / 34% IRR.



Inspired Capital is a new early-stage venture capital firm founded by Alexa von Tobel (former founder and CEO of LearnVest) and Penny Pritzker (former Secretary of Commerce, 6x founder). Leveraging a team of highly proven and differentiated founders, Inspired Capital is operating as a builders fund and helping the next wave of entrepreneurs to build great companies. The fund seeks to invest in early stage opportunities where it believes it is advantaged, with a particular focus on consumer technology and financial technology.



Integrity Growth Partners (IGP) is a woman-owned private equity firm focused on making growth equity investments in lower middle market software and tech-enabled services companies within targeted underserved ecosystems in North America. IGP seeks to invest at a company's tipping point, strengthen the company's balance sheet, and accelerate sales and profitability through operational and sector expertise in active partnership with company management. IGP applies the same standards of efficiency, alignment, and continuous improvement expected of its portfolio companies by utilizing customized in-house technology and exclusive data science. IGP's sourcing method is high-touch, data-driven, and designed to generate exclusive, attractive deal flow through market cycles.



Kayo Conference Series designs curated, industry-leading events where women can connect with leaders in their field, champion their peers, and advance themselves through knowledge and deep relationships. We believe that networking is hard when there is only one woman in the room, and we believe no woman should walk alone on her path to success. When women connect and champion one another, they advance further and faster with more confidence.

Kayo connects investors in Private Equity, Credit, Energy, Power, and Real Estate through our flagship annual conferences, pop-up events, and online community to make it easy to connect with female business leaders and learn in an intimate setting. Our community network allows attendees to explore new deals or simply connect with others.

Nothing should stand between you and the career you want to have. We will walk beside you until you get there. Join us as we trailblaze together.

## Company

## Company Description



Kinzie Capital partners is a Chicago-based private equity firm investing in lower middle market companies in the consumer, manufacturing and service industries. Whether companies experiencing generational shifts, periods of high growth or changes in business cycles, Kinzie leverages technology and strong operational skills to create a positive impact on business outcomes. In a strategic alliance with Clarity Partners, who specializes in management and technology consulting, Kinzie has assembled a team who are readily available to assist with due diligence and work closely with our portfolio companies to execute strategic vision. At Kinzie, we believe that the combination of the right capital partner with operational excellence, technology and innovation is the key to driving value creation and lasting changes.



KKR is a leading global investment firm that manages multiple alternative asset classes, including private equity, energy, infrastructure, real estate and credit, with strategic partners that manage hedge funds.

Forty-three years ago, KKR's founders established a culture based on their own partnership and lifelong friendship. We partner with whom we do business and maintain a shared sense of ownership across the firm. Today our core values remain ingrained in every aspect of our organization. They are also reflected by the values we live by: Teamwork, Integrity, Relationship-Driven, Accountability, Innovation, Excellence and Diversity.

As a firm and as individuals, we are encouraged to think creatively to solve problems, explore opportunities, take on new responsibilities and challenges, put our clients first and contribute to our communities. People want to do business with those they like and trust. It's a mantra instilled in all of us from the top down.



Landmark Partners specializes in secondary market transactions of private equity, real estate and infrastructure investments, with approximately \$27 billion of committed capital as of June 30, 2019. Founded in 1989, the firm has one of the longest track records in the industry and is a leading source of liquidity to owners of interests in real estate, real asset, venture, mezzanine and buyout limited partnerships.

Landmark has completed over 650 transactions in its 30-year history and acquired over 2,375 partnership interests, managed by over 800 general partners, as of June 30, 2019.

Landmark Partners has more than 125 professionals across five offices in Boston, Dallas, London, New York and Simsbury, Connecticut. [www.landmarkpartners.com](http://www.landmarkpartners.com)



**LEVINE  
LEICHTMAN**  
CAPITAL PARTNERS

Levine Leichtman Capital Partners, LLC is an independently-owned middle-market private equity firm with a 35-year track record of successfully investing across various targeted sectors, including franchising, professional services, education and engineered products. LLCP utilizes a differentiated Structured Equity approach to its investments, combining debt and equity capital from the same investment partnership. This unique structure provides a less dilutive capital solution for management teams and entrepreneurs, while delivering growth and income with a significantly improved risk profile. Since inception, LLCP has managed over \$10.7 billion of institutional capital across 14 investment funds and has invested in over 80 portfolio companies throughout North America and Europe. Our global team consists of 37 dedicated investment professionals, including six partners who have worked together for an average of 22 years. LLCP currently manages \$6.4 billion of assets and has offices in Los Angeles, New York, Dallas, Chicago, Charlotte, London, Stockholm and The Hague. LLCP's most recent flagship fund, Levine Leichtman Capital Partners VI, L.P., closed in 2018 with \$2.5 billion of capital commitments.



Lightspeed Venture Partners is a multi-stage venture capital firm focused on accelerating disruptive innovations and trends in the Enterprise and Consumer sectors. Over the past two decades, the Lightspeed team has backed hundreds of entrepreneurs and helped build more than 400 companies globally, including Snap, Giphy, Honest Company, Nest, Nutanix, AppDynamics, MuleSoft, OYO, Pinduoduo, Guardant, StitchFix, TripActions, Rubrik, Calm and GrubHub. Lightspeed currently manages over \$8B across the global Lightspeed platform, with investment professionals and advisors in Silicon Valley, Israel, India, and China.

**LINDSAY GOLDBERG**

Lindsay Goldberg is a private investment firm, founded in 2001 by Alan E. Goldberg and Robert D. Lindsay, that focuses on partnering with families, founders and management teams. Lindsay Goldberg's relationship-driven investment model allows the firm to target hard-to-access markets, nurture differentiated sourcing networks, develop a collaborative approach to value creation and embrace a partnership culture. Since inception, Lindsay Goldberg has raised \$13.4 billion in capital commitments across its first four funds. In line with the firm's long-term orientation to business building, Lindsay Goldberg has executed over 220 follow-on acquisitions, capital projects and share purchases to support

platform business growth. The firm's strategy has generated strong risk-adjusted returns since inception while generally employing lower levels of leverage than the industry average.

Company

Company Description



Linden Capital Partners is a Chicago-based Private equity firm focused exclusively on healthcare. Founded in 2004, the firm has grown to become the country's largest dedicated healthcare private equity firm by creating exceptional value for companies, business owners, and investors. The firm's model of partnership with management and actively engaged operating partners has defined the firm's success and set the bar for others.

Linden has a proven track record of growth, closing the first fund of \$200 million in 2005, the second fund of \$375 million in 2010, the third fund of \$750 million in 2015, and the fourth fund of \$1.5 billion in 2018. Today, the firm manages a portfolio of 17 companies and over \$3 billion of commitments.



Lockton Companies Inc. is the world's largest privately held insurance brokerage firm, providing insurance, risk management, employee benefits and retirement services. In addition to its Kansas City, Missouri headquarters, Lockton operates more than 90+ locations in 27 countries. Lockton currently employs more than 7,000 people worldwide.



Locust Point's culture is grounded in a long-standing history of teamwork and collaboration. We believe that our team is our most important asset and that the strength and insight of our entire organization are integral to facilitating superior investment decisions. The Locust Point collaborative approach ensures each owner/operator benefits from the deep experience of our investment professionals working with small to mid-sized, privately owned seniors housing and long-term care businesses. Our national presence combined with our reputation in the industry means our clients understand that while we provide short-term capital, we are long-term partners.



Luminate Capital Partners provides flexible capital with an emphasis on investments that allow us to take majority ownership in companies where we can partner with management teams to drive strategy and operations. We focus on companies, people and industries that we know and where we can add value, including vertical applications, SaaS, back office and supply chain, marketing automation, e-commerce, data and analytics and software-enabled services. We look for companies that have emerged from the start-up, bootstrapped and venture funding phases and that seek new avenues of growth, operational scale, and a partner who can provide capital and operational capabilities.



Madison Dearborn Partners, LLC ("MDP") is a private equity investment firm based in Chicago, Illinois. Since MDP's formation in 1992, the firm has raised seven funds with aggregate capital of over \$22 billion and has completed over 133 investments. MDP is currently investing Madison Dearborn Capital Partners VII, L.P., a \$4.4 billion investment fund. MDP focuses on management buyout and growth equity transactions across a broad spectrum of industries including basic industries, telecommunications, media & technology services, business and government software services, financial services, and health care.



MiddleGround Capital is a private equity firm that invests in industrial and specialty distribution businesses in the North American lower middle market. We make control equity investments in fundamentally good businesses that align with our operational expertise.

We are differentiated as true operators who have experience working in and managing businesses that range from the lower middle market to Fortune 500 companies and invest in businesses that can benefit from our hands-on operational expertise. We partner with management teams to execute a customized value creation program that drives equity value back to both our investors and management.

Co-founded by John Stewart, Lauren Mulholland, and Scot Duncan in 2018, MiddleGround has since grown to a team of twenty professionals and acquired three platform companies. MiddleGround is investing out of its first fund, which totals \$459.5 million in capital commitments, and has offices in both Lexington, Kentucky and New York City.



Moelis & Company is a leading global independent investment bank that provides innovative strategic advice and solutions to a diverse client base, including corporations, governments and financial sponsors. The Firm assists its clients in achieving their strategic goals by offering comprehensive integrated financial advisory services across all major industry sectors. Moelis & Company's experienced professionals advise clients on their most critical decisions, including mergers and acquisitions, recapitalizations and restructurings, capital markets transactions, and other corporate finance matters. The Firm serves its clients from 19 geographic locations in North and South America, Europe, the Middle East, Asia and Australia. For further information, please visit: [www.moelis.com](http://www.moelis.com) or follow us on Twitter @Moelis.



The National Association of Investment Companies (NAIC) is a thought leader and the largest trade association of diverse-owned private equity firms and hedge funds. Comprised of 75 members representing over \$150B in assets under management and thousands of portfolio companies globally, NAIC member firms generate superior returns that help fuel the growth of the retirement and asset management industries across the globe.



New Mountain Capital is a New York-based investment firm that emphasizes business building and growth, rather than debt, as it pursues long-term capital appreciation. The firm currently manages private equity, public equity, and credit funds with over \$20 billion\* in assets under management. New Mountain seeks out what it believes to be the highest quality growth leaders in carefully selected industry sectors and then works intensively with management to build the value of these companies. For more information on New Mountain Capital, please visit [www.newmountaincapital.com](http://www.newmountaincapital.com).

*\* Includes amounts committed, not all of which have been drawn down and invested to date.*



Company

Company Description



The NYU Stern School of Business offers top MBA programs in the heart of New York City. With over 20 specializations and 200 electives, Stern students have the opportunity to explore many areas of interests. Experiential learning courses and connections with world renowned faculty members make the Stern experience unique. Despite being in New York City, Sternies find community on-campus through affinity groups and professional organizations. For those interested in finance, our Graduate Finance Association and Private Equity & Venture Capital Club offer professional and educational opportunities to advance in the field. Fun fact: both of these clubs are co-led by female students!



Oaktree is a leader among global investment managers specializing in alternative investments, with \$120 billion in assets under management as of June 30, 2019. The firm emphasizes an opportunistic, value-oriented and risk-controlled approach to investments in credit, private equity, real assets and listed equities. The firm has over 950 employees and offices in 18 cities worldwide.



Palladium Equity Partners, LLC (along with its affiliates, "Palladium") is a middle market private equity firm based in NYC with approximately \$2.7 billion in assets under management. The firm has a special focus on making investments in founder- and family-owned businesses, particularly those in fragmented industries ripe for consolidation, and in businesses it expects will benefit from the growth in the U.S. Hispanic population. Palladium seeks to transform and grow these businesses into professional enterprises through enhanced leadership, operational improvements and a renewed focus on growth. Since its founding in 1997, Palladium has invested approximately \$2.0 billion of capital in 32 platform investments and more than 120 add-on acquisitions.



Peak Rock Capital is a leading middle-market private investment firm. We make equity and debt investments in companies in North America and Europe. Peak Rock's equity investment platform focuses on opportunities where it can support senior management to drive rapid growth and profit improvement, with expertise in corporate carve-outs and partnering with families and founders seeking first-time institutional capital. Peak Rock's credit platform focuses on providing bespoke primary financings and making investments in secondary loans for corporate debt and commercial real estate. Peak Rock's principals have deep expertise in complex situations and cross-border transactions, with the ability to provide tailored capital solutions and close transactions quickly where speed and certainty are priorities.

## PJT Park Hill

PJT Park Hill provides global alternative asset advisory and fundraising services across four specialized verticals. Our platform includes deep expertise in private equity, real estate and hedge funds, as well as secondary advisory services. PJT Park Hill served as a placement agent to funds that have raised over \$300 billion. To learn more about PJT Park Hill, please visit the Company's website at [www.pjtpartners.com](http://www.pjtpartners.com)



## PRELUDE GROWTH PARTNERS

Prelude Growth Partners is a New York City based growth equity firm focused on providing capital and value-added operating support to high potential, fast-growing consumer brands. To date, Prelude has invested behind 8Greens, Sol de Janeiro, Summer Fridays, and Westman Atelier. Prelude seeks to make investments of \$5 million to \$15 million in each company, across branded consumer categories including personal care/beauty, health & wellness, food & beverage, baby, and pet. For additional information on Prelude, please visit [www.preludegrowth.com](http://www.preludegrowth.com).

## PSG | PROVIDENCE STRATEGIC GROWTH

Providence Equity Partners (“PEP”) is a leading global asset management firm with approximately \$40 billion in assets under management and a broad range of investment strategies in private equity and credit platforms. Formed in 2014, Providence Strategic Growth (“PSG”) is the growth equity franchise of PEP; PSG has a team of over 50 professionals and 12 senior advisors with a combined 325+ years of industry experience investing in software & tech-enabled service companies. PSG is headquartered in Boston with offices in Kansas City and London.

PSG believes a diversity of experiences, perspectives and backgrounds is the foundation of our culture. It is critical to our business and investments that we have creativity, innovation and out-of-box thinking. Through our on-going programs and partnerships, our goal is to recruit and retain talent that reinforces diversity. PSG’s success is directly linked to the strength of our culture, transparency and quality of people.

## RED ARTS CAPITAL

Based in Chicago, Red Arts Capital is a leading investment firm focused on supply chain and industrial related companies. Its objective is to invest in privately-owned, primarily family-owned and multi-generational businesses with solid business fundamentals and a strong track record and reputation.

## RED REEF PARTNERS

Established in 2009, Red Reef is a private investment firm specialized in North American farmland, serving investors seeking actively and sustainably managed, high quality farmland and related assets. The firm covers the North American farmland market from offices in Boca Raton, New York and Ames, Iowa. Red Reef’s team members share a commitment to excellence, integrity, and alignment with investors and business partners. The firm’s investment professionals have deep experience in real assets, natural resource, and agricultural investments and an established track record of investments, including over \$800 million of equity invested in agriculture and farmland assets and operating companies since 2007, in both customized farmland portfolios established and managed by Red Reef, and investments made by Red Reef investment professionals on behalf of funds or investment programs they managed prior to joining the firm.

Company

Company Description



Roark Capital Group is an Atlanta-based private equity firm with approximately \$13 billion in equity capital raised since inception. Roark focuses on family-owned business transfers, management/corporate buyouts, recapitalizations, going-private transactions, and corporate divestitures. Our portfolio of brands focuses on diverse consumer and business service companies, with a specialization in franchised and multi-unit business models in the restaurant, retail, consumer services, and business services sector.

Roark prides itself on being a trusted partner for its team members, management and business owners. We believe that successful partnerships begin with providing a compelling value proposition to all business constituencies. A win-win-win approach leads to an enthusiastic business environment where all stakeholders share in the growth and success of our businesses.

We are also committed to attracting and developing a wider pool of talent, as well as nurturing an inclusive culture. This allows us to truly leverage the vast experiences and thinking of one another to realize our team's full potential.



Rock The Street, Wall Street is a financial literacy program designed to spark the interest of high school girls into careers of finance. Girls learn about positive money management habits and the capital markets, while simultaneously helping them see the real-world application of the math content they learn in the classroom. RTSWS programs are funded by sponsors; volunteers are female financial professionals who go into local high schools to teach the M in STEM, and serve as real-life role models and mentors for girls. RTSWS programs provide a strong focus on the barriers that need to be removed and the types of interventions that "lift" students' interest, commitment, and ability to persist in the M of the STEM fields. Headquartered in Nashville, Tenn., RTSWS programs are in 28 high schools across 15 U.S. cities in the 2019-20 academic year: Charlotte, Chicago, Dallas/Ft. Worth, Kansas City, Minneapolis, Nashville, New Orleans, New York City, Omaha, Philadelphia, Raleigh, Sacramento, San Diego, Redwood City and St. Louis. RTSWS is a 501(c)(3) organization.



RSM US LLP is the leading provider of audit, tax and consulting services focused on the middle market, with nearly 11,000 people in 87 cities and four locations in Canada. For more information, visit [rsmus.com](http://rsmus.com).



Science Inc., a Los Angeles-based incubator and venture fund focused on technology and internet companies that tap into societal shifts and disrupt entrenched markets. Founded in 2011, Science's portfolio has seen \$1.3 billion in exits including Dollar Shave Club (acquired by Unilever). It built two of the first & largest influencer networks on YouTube and Pinterest: FameBit (acquired by Google) and HelloSociety (acquired by New York Times). Today, Science's portfolio includes notable companies such as PlayVS, Bird, MeUndies, Grove Collaborative, Mammoth Media, Liquid Death, and more.



Searchlight Capital Partners is a leading investment firm focused on value-oriented private equity and distressed debt-for-control investments in the middle market. Searchlight believes it employs a differentiated investment model with an ability to invest during all economic cycles. An important component of the strategy is the firm's expertise and ability to invest across a company's capital structure in the securities offering the most attractive risk/return for investors. The Searchlight team has significant experience in making complex private equity investments, including corporate divestitures, public-to-privates and structured minority investments. In addition, the Searchlight team has established its expertise in executing successful distressed debt, structured equity and debt-for-control investments that generate equity-like returns. Searchlight is pro-active in its approach to generating proprietary investments by actively developing industry themes and leveraging its extensive network of relationships. Searchlight invests in North America and Europe and has offices in New York, London and Toronto.



Siris is a leading private equity firm that invests primarily in mature technology and telecommunications companies with mission-critical products and services, facing industry changes or other significant transitions. Siris' development of proprietary research to identify opportunities and its extensive collaboration with its Executive Partners are integral to its approach. Siris' Executive Partners are experienced senior operating executives that actively participate in key aspects of the transaction lifecycle to help identify opportunities and drive strategic and operational value. Siris is based in New York and Silicon Valley and has raised nearly \$6 billion in cumulative capital commitments. [www.siris.com](http://www.siris.com)



Snow Phipps is a private equity firm focused on mid-market control investments. The firm was co-founded by Ian Snow and Ogden Phipps in 2005 and utilizes an Operating Partner strategy seeking to create long-term capital appreciation. Along with its founders, Snow Phipps is led by two additional Investment Partners: Alan Mantel and John Pless. The firm generally targets companies in attractive sectors or sub-sectors and then utilizes its Operating Partners and management teams to seek to raise these companies to higher levels of growth and performance. Headquartered in New York, Snow Phipps has overseen the deployment of over \$2.8 billion of private equity capital and co-investments in 24 platform investments and over 50 add-on acquisitions since inception.



StepStone is a global private markets firm providing customized investment and advisory solutions to some of the most sophisticated investors in the world.

With more than \$260 billion of total capital allocations, including over \$52 billion in assets under management, we cover the spectrum of opportunities in private markets across the globe.

StepStone prudently integrate fund investments, secondaries and co-investments across private equity, real estate, infrastructure and private debt to create solutions that are customized according to the objectives of any private markets investment program.

Company

Company Description

## STONE POINT CAPITAL

Stone Point Capital is a financial services-focused private equity firm based in Greenwich, CT. The firm has raised and managed eight private equity funds – the Trident Funds – with aggregate committed capital of more than \$25 billion. Stone Point targets investments in companies in the global financial services industry and related sectors.

For more than 20 years, we have been investing with individuals who are passionate about their businesses and are leading operators within their fields. We are committed to instilling a strong culture of alignment, both within our investment team and with our owner-operator partners.

Our ability to add value is enhanced by our deep sector knowledge, domain expertise and network of lasting partnerships built over time. We believe Stone Point's financial-services focus makes us the preferred partner for management teams and creates unique opportunities to invest alongside talented owner-operators across multiple investment lifecycles.

## Syracuse University Martin J. Whitman School of Management

Our full-time Master's degree programs emphasize a well-rounded education that incorporates both theoretical background and practical experience. As a Whitman student, you'll build an experiential portfolio through internships, consulting, specialized courses, community engagement, and other practical experiences that make you more valuable in the marketplace. After utilizing the planning tools offered through the Whitman Career Center, you'll identify gaps in your knowledge or skill sets and build a portfolio to enhance your skills.



UNC Kenan-Flagler has long understood what defines true business success and puts that understanding into practice. In and out of the classroom, we're shaping exceptional leaders who make positive impacts on the corporations they lead & the communities they serve. Our unmatched portfolio of premier MBA programs creates a unique atmosphere of collaboration, mutual support and genuine interest in each other's success. Our top-ranked Full-Time, Executive, and Online MBA offerings leverage a powerful and integrated curriculum to shape principled, agile leaders who drive extraordinary results for both the bottom line & the greater good.

UNC Kenan-Flagler Business School is deeply committed to the strong presence of women in our MBA faculty, staff and student body. Visit us in beautiful Chapel Hill, North Carolina, e-mail [mba\\_info@unc.edu](mailto:mba_info@unc.edu), or call 919-962-3236 to speak with a member from our team.



THL Credit is an alternative credit investment manager for both direct lending and broadly syndicated investments through public and private vehicles, collateralized loan obligations, separately managed accounts and co-mingled funds. THL Credit and its subsidiary maintain a variety of advisory and sub-advisory relationships across their investment platforms, including THL Credit, Inc. (Nasdaq: TCRD), a publicly traded business development company, and THL Credit Senior Loan Fund (NYSE: TSLF), a non-diversified, closed-end management investment company.



Thoma Bravo is a leading private equity firm focused on the software and technology-enabled services sectors. With a series of funds representing more than \$35 billion in capital commitments, Thoma Bravo partners with a company's management team to implement operating best practices, invest in growth initiatives and make accretive acquisitions intended to accelerate revenue and earnings, with the goal of increasing the value of the business. The firm has offices in San Francisco and Chicago.

## TRIAGO

Founded in 1992 as one of the world's first fund placement agents, Triago provides fundraising services, secondary advisory and strategic advisory for GPs and LPs of all types from every corner of the globe. Triago conducts four to six fundraisings each year, building lasting relationships and minimizing investor base correlation for select GPs. As a full-service firm, Triago fundraises expeditiously, allowing clients to focus on investing. In the secondary market, Triago offers a complete range of tailored services including fund portfolio sales, structured liquidity solutions, and direct secondary transactions. Through strategic advisory, Triago helps GPs, LPs, fund-of-funds, corporates, and others improve business and strengthen brands by identifying, preparing and executing mergers & acquisitions, joint-ventures and internal change of any type, narrow or broad. Triago's hallmarks are alignment with client interests, independence, creativity, and confidentiality.

All services mentioned above are provided in the USA by Triago Americas, Inc. member FINRA/SIPC



The University of Virginia Investment Management Company (UVIMCO) provides investment management services to the University of Virginia and its associated organizations. UVIMCO invests the endowment and other long-term funds held by the University and its associated organizations in the Long Term Pool, which is custom-managed for the endowment spending requirements and risk tolerance of the University. Located in Charlottesville, Virginia, UVIMCO's 16-person investment team is responsible for monitoring and evaluating investment strategies for the \$9.6 billion Long Term Pool. Our investments are predominantly made through external active managers and our portfolio is invested globally across a broad range of asset classes and strategies, including: public equity, hedge funds, private equity, venture capital, real estate, resources, credit, fixed income, and derivatives. Members of the investment team at UVIMCO have the opportunity to work across asset classes in a small, flat organization.

Company

Company Description



We're Valor — a different kind of private investment firm. We pioneered the idea of operational growth.

More than 20 years ago, we got our start tech-enabling industrial companies. We built the fastest connectors in the world — the backbone of the internet. As entrepreneurs, we built our own desks, and we still use them today.

We applied that operational growth mindset to tech-enable warehouses, assembly lines, and restaurants. We helped production move faster. We helped people work smarter. We found efficiencies and fine-tuned processes. And we grew our companies dramatically.

Today, we continue to invest in technology and technology-enabled companies that innovate and disrupt existing industries — from biosciences to transportation to food to health and wellness.

We've had the honor of serving some of the world's greatest entrepreneurs and companies.

Today, we work side by side, shoulder to shoulder, to help grow the operations of great companies solving the world's biggest problems.

Let's grow together.



Vista Equity Partners is a U.S.-based investment firm with offices in Austin, Chicago, New York City, Oakland, and San Francisco with more than \$50 billion in cumulative capital commitments. Vista exclusively invests in software, data, and technology-enabled organizations led by world-class management teams. As a value-added investor with a long-term perspective, Vista contributes professional expertise and multi-level support towards companies to realize their full potential. Vista's investment approach is anchored by a sizable long-term capital base, experience in structuring technology-oriented transactions, and proven management techniques that yield flexibility and opportunity.



Vistria is a Chicago-based firm that makes privately-negotiated buyout and recapitalization investments in US-based middle market companies in the healthcare, education, and financial services industries. Vistria believes in partnering with experienced management teams and creating value by growing cash flow through the implementation of strategic and operational initiatives.



Wind Point Partners is a Chicago-based private equity firm that partners with top caliber executives to acquire well-positioned middle market businesses where it can establish a clear path to value creation. Wind Point works to provide a solution to companies facing leadership transition challenges within the Consumer Products, Industrial Products and Business Services industries. Wind Point is led by five managing directors who have over 84 years of combined private equity experience and represent the third generation of firm leadership. Since its founding in 1984, Wind Point has raised over \$4 billion in commitments and acquired more than 100 platform companies and 300 add-on acquisitions.

# THE POWER OF PERSPECTIVE

Landmark Partners specializes in secondary market transactions of private equity, real estate and infrastructure investments, with approximately \$27 billion of committed capital. Founded in 1989, the firm has one of the longest track records in the industry and is a leading source of liquidity to owners of interests in real estate, real asset, venture, mezzanine and buyout limited partnerships.

Landmark Partners has more than 125 professionals across five offices in Boston, Dallas, London, New York and Simsbury, Connecticut.





HAUS  
LABORATORIES

ZOLA



D  
H  
DAILY HARVEST

girlboss®

goop



**TOMORROW, BUILT TODAY.**

**FOR OVER TWENTY YEARS LIGHTSPEED HAS  
BACKED EXCEPTIONAL FOUNDERS LOOKING  
TO REDEFINE THE STATUS QUO.**

**WHAT WILL YOU BUILD WITH US TODAY?**

# LINDSAY GOLDBERG

THE PARTNER OF CHOICE FOR FAMILIES, FOUNDERS, AND  
DEDICATED MANAGEMENT TEAMS WHOSE PRINCIPAL  
CONCERN IS FINDING A TRUSTED PARTNER TO HELP  
GROW THEIR BUSINESSES

WE INVEST IN OPPORTUNITIES WHERE OUR LONG-TERM  
ORIENTATION, PATIENT CAPITAL, AND OPERATING  
EXPERTISE CAN BUILD VALUE OVER TIME

[WWW.LINDSAYGOLDBERGLLC.COM](http://WWW.LINDSAYGOLDBERGLLC.COM)



StepStone is a global private markets firm providing customized investment and advisory solutions to some of the most sophisticated investors in the world

StepStone is a Proud Sponsor of the

# WAVE ACCESS WOMEN IN ALTERNATIVES CAREER FORUM

At StepStone, building an organization that is diverse and dynamic is a key strategic initiative. One way in which we demonstrate this commitment is through supporting important events like the WAVE Access Career Forum.

[WWW.STEPSTONEGLOBAL.COM](http://WWW.STEPSTONEGLOBAL.COM)

PRIVATE EQUITY  
REAL ESTATE  
INFRASTRUCTURE  
PRIVATE DEBT



# Investing is a team sport.

CD&R is proud to support WAVE's efforts to advance women leaders as they chart a course for success.

**Founded in 1978**, Clayton, Dubilier & Rice employs a distinctive approach to private equity investing, combining financial and operating capabilities to build businesses and enhance long-term performance. Since inception, CD&R has managed the investments of more than \$27 billion in 83 companies with an aggregate transaction value of more than \$125 billion.

CLAYTON  
DUBILIER  
& RICE

**Building Businesses,  
Building Value**

New York • London



# Hellman & Friedman

is proud to sponsor the  
**2019 Women in Alternative Investments Career Forum.**

H&F's founding vision remains intact today. If you empower people and believe in their success, together you can accomplish incredible things.

We hope you will join us in leading the future of private equity.

SAN FRANCISCO | NEW YORK | LONDON | [W HF.COM](http://www.hf.com)

Hg is delighted to support the WAVE Career Forum

# The #1 software & services investor in Europe has arrived in NYC



**Building businesses  
that change how we  
all do business**

Hg is a specialist private equity investor, partnering with software and services companies across the US and Europe to help them realise their full potential. To do this we look for diverse skills and diverse thinking to ensure we discover the best of the next generation.  
[hgcapital.com/join-us/](http://hgcapital.com/join-us/)



KKR is proud to sponsor

## **WAVE's Third Annual Women in Alternative Investments Career Forum**

We are honored to support WAVE's mission in promoting female leadership and supporting diversity across the private equity and alternative investments industry.

---

Enjoy the conference.

**KKR**



@KKR\_Co



/company/kkr

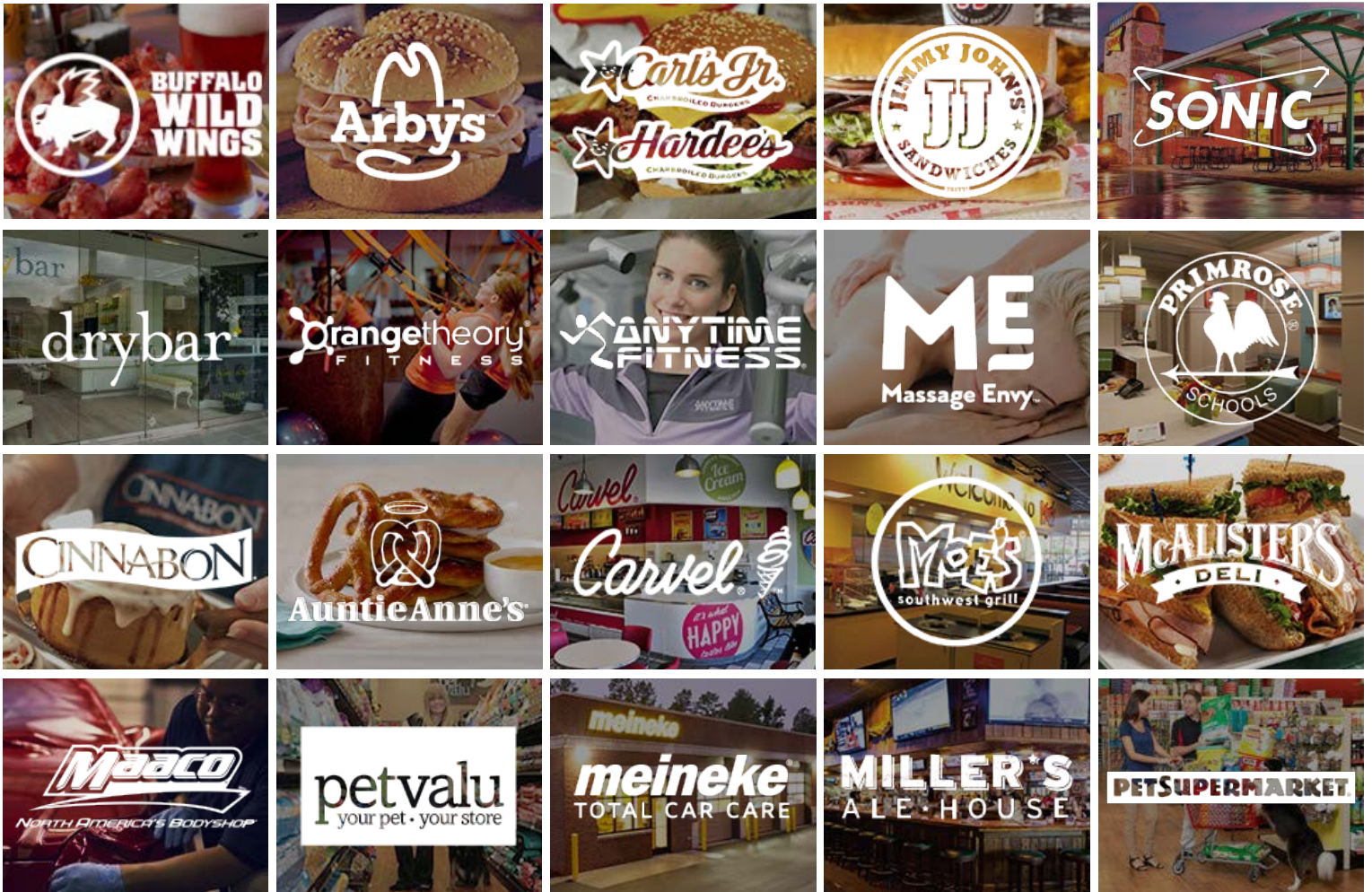
visit us at [www.kkr.com](http://www.kkr.com)

# ROARK

## CAPITAL GROUP

Roark is one the largest consumer-focused Private Equity firms in the world

With \$13 billion in capital, Roark is invested in brands that collectively generate \$37 billion in annual system revenues from 36,000 locations in 50 states and 81 countries.



### Highly Motivated Self-Starters

Roark is always on the lookout for exceptional talent. We are a highly analytical, results-driven firm. When evaluating candidates, we value:

Superior academic credentials without regard to field of study

Exceptional work ethic with a "can do" attitude and commitment to teamwork

Ability to synthesize information and develop informed decisions

Outstanding attention to detail and time management, writing and research skills



VISTA EQUITY PARTNERS IS A PROUD SPONSOR OF THE

# 2019 WOMEN IN ALTERNATIVE INVESTMENTS CAREER FORUM

Vista Equity Partners supports the Women's Association of Venture and Equity's mission to promote the development and advancement of women in private equity and venture capital.

Vista Equity Partners is a leading investment firm with a private equity portfolio of more than 60 software, data, and technology companies that are reinventing industries and helping businesses thrive. Our private equity investment approach is anchored by a sizable long-term capital base, experience in structuring technology-oriented transactions, and proven management techniques that yield both flexibility and opportunity. Across our platform, our investment teams manage private equity, credit, and public equity market funds centered on creating long-term value.

For more information, visit [VistaEquityPartners.com](http://VistaEquityPartners.com)



# Lead by example. Influence tomorrow.



Our future leaders will be defined by their achievements. Not their gender. We champion women in banking. To make the path to the top fair for everyone. So that our next generation of leaders can show the world that work ethic counts above all else. Discover a career at Credit Suisse: [credit-suisse.com/careers](https://credit-suisse.com/careers)

**GTCR proudly sponsors the  
WAVE Women in Alternative  
Investments Career Forum  
and its commitment to develop  
and advance women in private  
equity and venture capital.**



---

**GTCR**

[www.gtcr.com](http://www.gtcr.com)

# CenterGate Capital is a proud sponsor of WAVE's Third Annual Women in Alternative Investments Career Forum

CenterGate Capital is committed to gender diversity and inclusivity. We are proud to be a Gold Sponsor and to help further WAVE's mission, promoting engagement for women in private equity.



 /company/centergate-capital  
[www.centergatecapital.com](http://www.centergatecapital.com)

MDP

MADISON DEARBORN PARTNERS IS A PROUD SPONSOR OF THE  
2019 WAVE Career Forum



MADISON DEARBORN  
PARTNERS



NEW MOUNTAIN CAPITAL LLC

*Building Great Businesses*

---

PSG

PROVIDENCE  
STRATEGIC  
GROWTH



# VALOR

EQUITY PARTNERS

Vistria is a proud sponsor of WAVE and its commitment to promoting diversity within the alternatives industry. Diverse ideas, backgrounds, experiences, and perspectives lead to better value and results



# VISTRIA™

LOOK DEEPER



# WIND POINT PARTNERS

*Proud supporter of WAVE and Empowerment Initiatives*



*Wind Point Partners is a leading Chicago-based private equity investment firm that partners with top caliber executives to acquire well-positioned middle market businesses with a clear path to value creation.*



**Siris** is proud to support the **WAVE Career Forum** and WAVE's commitment to the development and advancement of women in private equity and venture capital.



Thinking about your business  
is a big part of ours.



**PUT OUR FINANCIAL SERVICES INSIGHTS TO WORK FOR YOU.**

To make confident decisions about the future, middle market leaders need a different kind of advisor. One who starts by understanding where you want to go and then brings the ideas and insights of an experienced global team to help get you there.

Experience the power of being understood.  
Experience RSM.

[rsmus.com/financialservices](http://rsmus.com/financialservices)

**THE POWER OF BEING UNDERSTOOD**  
AUDIT | TAX | CONSULTING



RSM US LLP is the U.S. member firm of RSM International, a global network of independent audit, tax and consulting firms. Visit [rsmus.com/aboutus](http://rsmus.com/aboutus) for more information regarding RSM US LLP and RSM International.

# TRIAGO

**Private Capital Funds Advisor**

Fundraising, Secondary, Strategic

Since 1992

New York • London • Paris • Dubai

[www.triago.com](http://www.triago.com)



50 South Capital Advisors LLC is the alternative assets subsidiary of Northern Trust, headquartered in Chicago. We manage various investment programs, including funds-of-funds, funds-of-one, and custom accounts. The group's founding team still leads the firm.



## Our global perspective is defined by our local investments.

Adams Street Partners is proud to sponsor the WAVE Annual Women In Alternatives Career Forum. Through their commitment to the development and advancement of women in private equity and venture capital, WAVE truly enriches us all.



Backcast Partners is proud to once again sponsor the Third Annual Women in Alternative Investments Career Forum.

Backcast is a middle market private credit and equity investor able to deliver differentiated value to companies beyond capital through its extensive network of over 50 corporate operating partners.

Other financial firms lend, Backcast *Partners*.

BARINGS

BARINGS IS PROUD TO SPONSOR THE

*Women in Alternatives*

2019 WAVE Career Forum

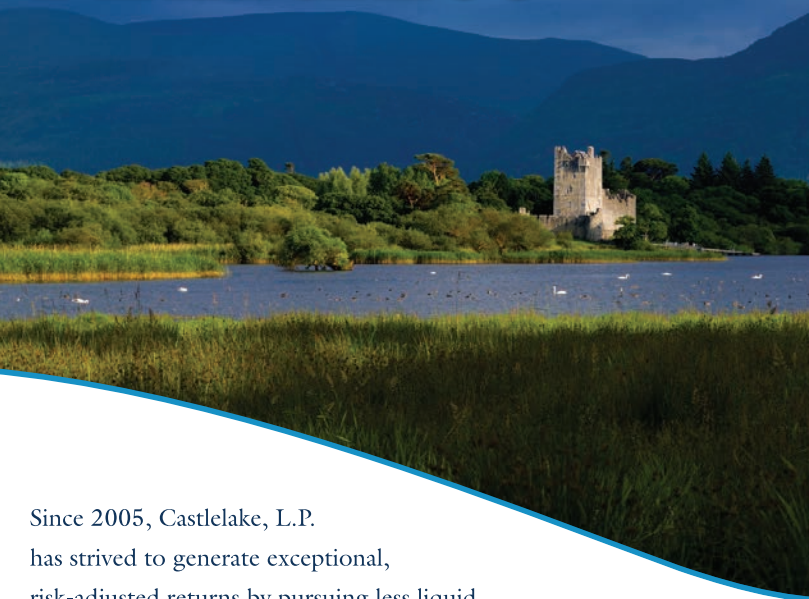
At Barings, we believe that a diversity of perspectives and strengths is essential to meeting the evolving needs of our clients. We are committed to attracting and retaining a talented workforce whose diversity reflects the clients and communities that contribute to our success.

BARINGS.COM  
19-960730

**W**e believe that private equity can be a force for positive change in the world, which is why we are so proud to support WAVE. Because as more women develop and advance in the industry, everyone benefits.



# PEERLESS



Since 2005, Castlelake, L.P. has strived to generate exceptional, risk-adjusted returns by pursuing less liquid, asset-rich opportunities on behalf of its global investors.

With a unique approach and distinct culture, Castlelake is truly *peerless*.



CASTLELAKE

Learn more about our firm and its differentiated investment strategy at [www.castlelake.com](http://www.castlelake.com).



PROUDLY SPONSORS THE  
**2019 WAVE Career Forum**

Cove Hill Partners is a private equity firm focused on partnering with outstanding management teams to build market-leading consumer and technology companies. The Firm manages a long-duration fund with over \$1 billion of commitments from its investors and founders. Cove Hill was founded in 2017 by seasoned technology and consumer private equity investor, Andrew Balson, a 17-year veteran of Bain Capital.



## Clearlake Capital Group is a proud sponsor of the WAVE Career Forum

**Clearlake Capital Group, L.P.** is a leading private investment firm founded in 2006. With a sector-focused approach, the firm seeks to partner with world-class management teams by providing patient, long-term capital to dynamic businesses that can benefit from Clearlake's operational improvement approach, *O.P.S.*®

The firm's core target sectors are industrials and energy; software and technology-enabled services; and consumer. Clearlake currently has over \$10 billion of assets under management and its senior investment principals have led or co-led over 200 investments.

[www.clearlake.com](http://www.clearlake.com)  
Santa Monica, CA

### THE FUND RAISER'S CREED

THE BEST DAY:	TODAY
THE BEST PLAY:	WORK
THE BEST WORK:	WORK YOU LIKE
THE GREATEST MISTAKE:	GIVING UP
THE GREATEST NEED:	COMMON SENSE
THE MOST DANGEROUS PERSON:	A LIAR
THE MOST DISAGREEABLE PERSON:	A COMPLAINER
THE GREATEST TEACHER:	EXPERIENCE
THE WORST BANKRUPT:	A SOUL VOID OF ENTHUSIASM
THE EASIEST THING TO DO:	FINDING FAULT
THE GREATEST COMFORT:	KNOWING YOU DID YOUR BEST
THE MEANEST FEELING:	ENVYING ANOTHER'S SUCCESS
THE GREATEST BLESSING:	GOOD HEALTH
THE GREATEST TRIUMPH:	VICTORY OVER YOURSELF
THE GREATEST THING IN THE WORLD:	LOVE OF YOUR FAMILY, FAITH & FRIENDS



Denning & Company, LLC | Private Equity Advisory  
[www.denningandcompany.com](http://www.denningandcompany.com) | 415.399.3939  
Member FINRA

WE INVEST IN  
GROWTH COMPANIES  
THAT SHARE OUR ETHOS



33  
years of  
success

\$1.6B  
assets under  
management

275  
years of  
experience

236  
investments

49  
portfolio companies

191  
exits

**INVESTING IN:**

Fintech • Healthcare IT • Enterprise Solutions



**edison**partners

281 WITHERSPOON ST. | PRINCETON, NJ 08540  
[WWW.EDISONPARTNERS.COM](http://WWW.EDISONPARTNERS.COM)



IS PROUD TO BE A  
**SILVER SPONSOR**  
AT THE  
2019 WOMEN IN  
ALTERNATIVE INVESTMENTS  
CAREER FORUM



**Great Hill** | 20  
PARTNERS | YRS



Great Hill Partners is a proud sponsor of the 2018 WAVE Career Forum

*On behalf of its  
Women's Leadership Council  
Oaktree is proud to support*

THE WOMEN'S ASSOCIATION OF  
VENTURE AND EQUITY (WAVE)

*and the*  
WOMEN IN ALTERNATIVES  
CAREER ACCESS FORUM



OAKTREE

# PJT Park Hill

PJT Park Hill  
is pleased to support the  
2019 WAVE Career Forum

[www.pjtpartners.com](http://www.pjtpartners.com)

New York | Boston | Chicago | San Francisco | London | Madrid | Hong Kong



Thoma Bravo is  
proud to sponsor  
the 2019 WAVE  
Career Forum

**Thoma Bravo supports the development and advancement of women in private equity and venture capital.**

Thoma Bravo is a leading private equity firm with a 40-year history, over \$35 billion in capital commitments and an investment focus on software and technology companies.

 THOMABRAVO

[WWW.THOMABRAVO.COM](http://WWW.THOMABRAVO.COM)

## STONE POINT CAPITAL

Stone Point Capital is proud to sponsor

### WAVE's Third Annual Women in Alternatives Career Forum

*Stone Point Capital is committed to cultivating a diverse and inclusive workplace, which we believe brings strength and effectiveness to our organization.*

Stone Point Capital LLC is a financial services-focused private equity firm based in Greenwich, CT. The firm has raised and managed eight private equity funds – the Trident Funds – with aggregate committed capital of more than \$25 billion. Stone Point targets investments in companies in the global financial services industry and related sectors.

[www.stonepoint.com](http://www.stonepoint.com)

## 2019 WOMEN IN ALTERNATIVE INVESTMENTS CAREER FORUM

# WAVE

Women's Association of Venture & Equity







Lockton  
Companies  
(back cover)