

23%

ALARM RATE
TANK FARM

Wonderware Alarm Adviser 2017

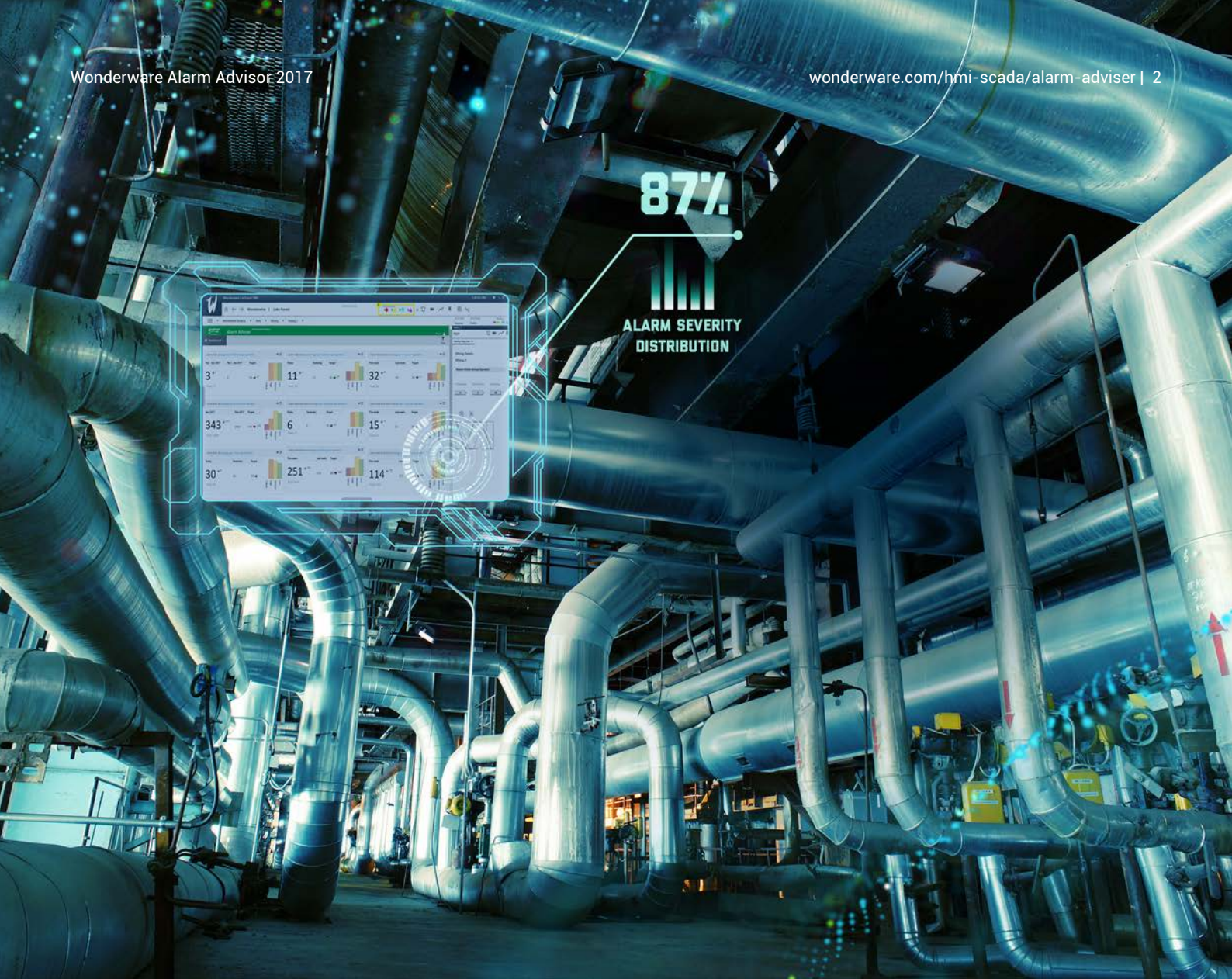
Interactive Alarm Analysis

Wonderware Alarm Adviser 2017 is a scalable, web-based alarm analysis tool that helps identify and rationalize nuisance alarms in your HMI/SCADA system.

Seamless installation ensures operators are quickly empowered with a holistic view of plant operations, helping to expedite corrective action, production efficiencies and ROI.

wonderware.com/hmi-scada/alarm-adviser

Wonderware
Finland & Baltics



Alarm Management Challenges

Advances in software technology, connected devices and the IoT over recent decades has led to an exponential increase in the number of alarms in industrial manufacturing operations.

The EEMUA 1911¹ and ISA² 18.2 Alarm Management Standards² recommend the practical limit of handling alarms per operator at 1 to 2 alarms every 10 minutes, and an average of 150 to 300 alarms per day. However automation systems today generate thousands of alarms per day, per operator.

Within the US automation industry alone, the cost of critical incidents is estimated at \$20 billion per annum³, encompassing \$10 billion in equipment replacement and litigation costs coupled with \$10 billion in lost production costs.

The challenge for operators is quickly identifying and distinguishing critical from routine alarms; and taking timely corrective action on potential impacts to safety and operations. All the while, ensuring adherence to stringent industry best practices and recommendations.

1. Engineering Equipment & Materials Users' Association 191 - Alarm systems a guide to design.
2. ANSI/ISA 18.2, Management of Alarm Systems for the Process Industry
3. Abnormal Situation Management (ASM) Consortium



Product At A Glance

Alarm Adviser 2017 is a powerful web-based alarm analysis tool that helps identify and rationalize nuisance alarms in your HMI/SCADA system.

It provides a single means of identifying frequent, standing, fleeting and consequential alarms, empowering operators to quickly recognize and distinguish safety-critical alarms from routine alarms.

Summary

- Powerful web-based alarm analysis tool that helps identify and rationalize nuisance alarms in your system.
- Interactive benchmarking tools provide a holistic view of plant operations, empowering operators to quickly analyze upsets and optimize system performance.
- Inbuilt dashboard metrics help facilitate compliance with alarm management best practice guidelines and regulations.
- Drill-down to predefined 'Analysis' charts to hone in on the desired problem periods and greatly improve the ability to discover the root cause of anomalies.
- Seamless connectivity to our range of HMI/SCADA solutions including [InTouch](#), [System Platform](#), [Citect SCADA](#) and [ClearSCADA](#) help maximize the value of process data.

Business Value

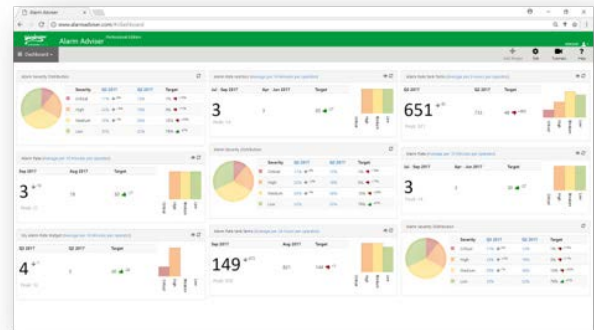
- Quick time to value and timely ROI.
- Greater context and insight into alarm data.
- Improved operator awareness and response time.
- Reduced risk of unscheduled downtime.
- Seamless adherence with alarm management regulations.
- Greater value and insight into process data.
- Improved plant performance and profitability.



Key Features

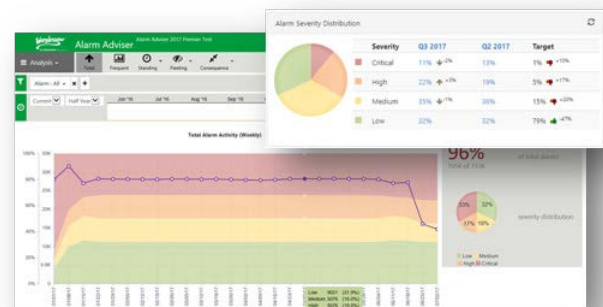
Customizable Dashboard

- Optimize your alarm analysis with a wide range of user configurable widgets consolidated into the dashboard view.
- Customize your own settings via user-configurable widgets to personalize your own dashboard and analysis settings.
- Display the distribution of alarm severity (critical, high, medium, low) in a specified period via 'Alarm Severity Distribution'.
- Show the peak or average alarm rate over a period of time for the selected interval per operator via 'Alarm Rate'.
- Set KPI targets to benchmark and compare recent and past performance to optimize improvements over time.



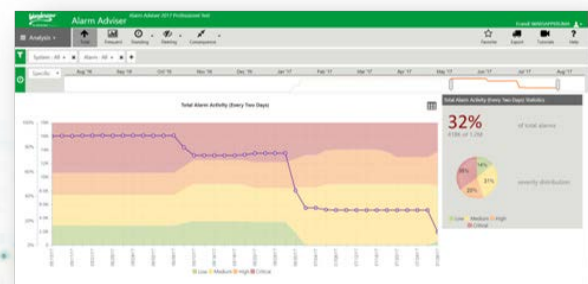
Interactive Drill-down

- Drill down from dashboards directly into analysis reports and hone in on desired problem areas.
- Filtering settings from 'Dashboard' view to 'Analysis' preserved.
- Replicate analysis time periods to compare alarms over similar time periods.
- Save valuable time in identifying and distinguishing nuisance alarms.



Inbuilt Visual Alarm History Analysis

- Filter alarms for a given time period - by severity, time of day, day of week, plant area, alarm category.
- Interactive timeline bar allows users to zoom in on a specific time range.
- Create analysis reports for the most frequent, fleeting (short duration) and standing (long duration) alarms, and identify alarms that should be targeted first.
- "Consequence" allows the analysis of the correlation between alarms, helping engineers to implement state-based suppression.
- Save valuable time analysing trends and identifying the root cause of an issue.





Key Features

Ease of Installation

- Installs in minutes without the need for complex configuration and engineering.
- Operators can quickly gain insight into alarm data and trends, identifying anomalies from routine alarms.

Ease of Use

- Simplified consolidated insight into alarm data empowering operators to take corrective action to optimize efficiency.
- No IIS / additional application engineering time needed.
- Simple electronic licensing model with unlimited client connectivity.

Alarm Management Industry Compliance

- Out-of-the-box metrics aligned with industry recommendations.
- Tailor metrics to suit your plant's specific requirements.

Holistic View of Your SCADA Alarm System

- Aggregated alarm data from various Schneider Electric SCADA/HMI systems.
- Optimizing efficiency across the operation and gaining greater value of process data.

Multi-language Support

Alarm Adviser 2017 offers multi-language support in a variety of languages including:

- English
- French
- Italian
- Spanish
- Czech
- Dutch
- Simplified Chinese

Alarm Analysis on the Go

- Alarm Adviser 2017 supports HTML 5 technology, ensuring you'll always have access to the data you need—anytime, anywhere, on any device.

Unlimited Analysis Clients

- Benefit from an unlimited number of analysis clients, giving you the freedom and flexibility to add and use as many devices as you need.

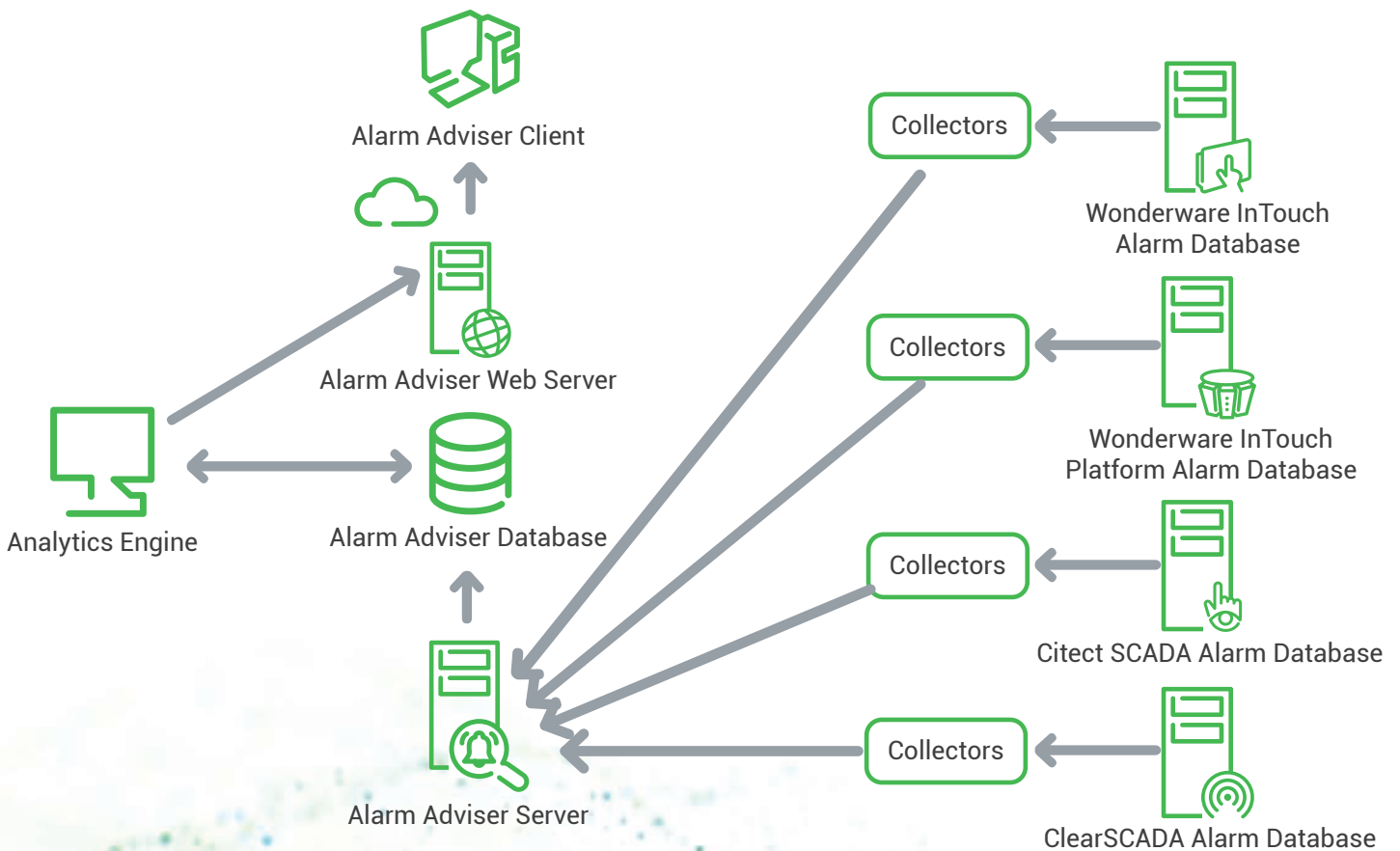


Connectivity

Alarm Adviser 2017 seamlessly connects to our range of powerful Schneider Electric HMI/SCADA solutions including:

- Wonderware System Platform
- Wonderware InTouch
- Citect SCADA
- ClearSCADA

Data is integrated from the relevant alarm databases through customized Collectors, onto the Alarm Adviser Server. This connectivity provides a holistic view of plant operations, aggregating alarm data from various systems and helping you maximize the value of your process data.





Technical Specifications

System Requirements:

- Microsoft® Windows® 7 (32-bit or 64-bit)
- Microsoft Windows 8/8.1 (32-bit or 64-bit)
- Microsoft SQL Server 2012 SP1 Express (32-bit or 64-bit)
- Microsoft SQL Server 2012 SP1 Standard (32-bit or 64-bit)
- Microsoft SQL Server 2016 SP1 Express (32-bit or 64-bit)
- Microsoft SQL Server 2016 SP1 Standard (32-bit or 64-bit)

Compatibility

- Wonderware System Platform 2012 / v3.5 or higher (A2ALMDB or WWALMDB)
- Wonderware InTouch 2012 / v10.5 or higher (WWALMDB)
- Vijeo Citect / Citect SCADA v7.20 or higher
- ClearSCADA 2015 r1 or higher

Compliance

- Out-of-the-box metrics aligned with EEMUA 191 and ISA 18.2 Industry Standards.
- Tailor metrics to suit your plant's specific requirements.

For more information

For more information on Alarm Advisor 2017 visit our website at: wonderware.com/hmi-scada/alarm-adviser