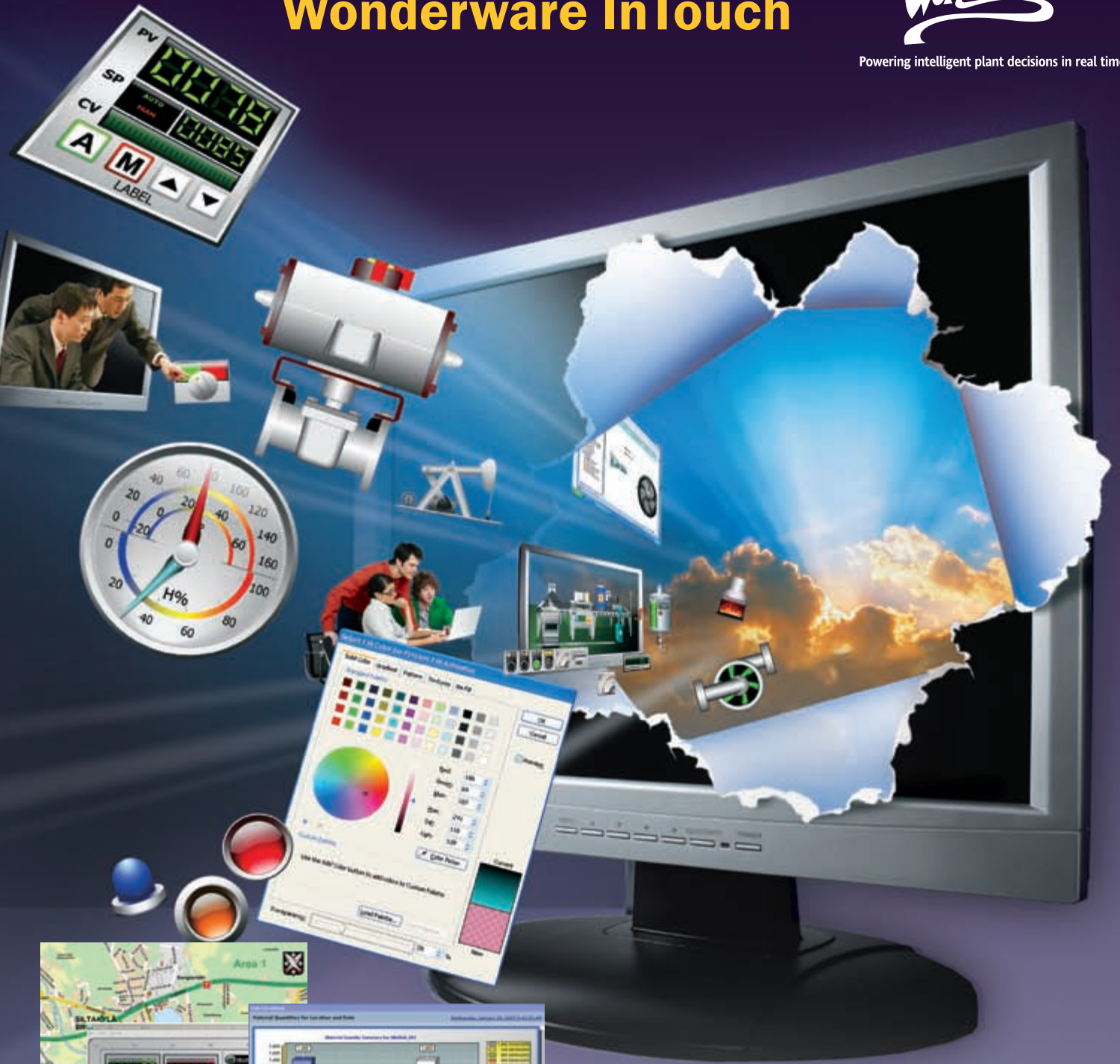


# Wonderware InTouch

invensys®  
**Wonderware**

Powering intelligent plant decisions in real time.



The global market leader — 450,000 installations in over 100,000 sites

**YOUR BREAKTHROUGH SOLUTION FOR ENTERPRISE-WIDE VISUALIZATION AND SUPERVISORY HMI AND SCADA**



Rockwell Automation   UNTRONICS   SIEMENS  
Schneider Electric   ABB   Honeywell  
invensys   YOKOGAWA ◆

**KLINKMANN**

[www.klinkmann.com](http://www.klinkmann.com)





# Your Breakthrough Solution for Enterprise-wide Visualization and HMI

Wonderware InTouch software leaps onto your screen with breakthrough technology, amazing graphic capabilities and comprehensive functionality delivered with Wonderware's legendary ease of use.

Wonderware's award winning InTouch Human Machine Interface (HMI) continues to outshine the competition with intuitive user interaction, robust runtime functionality, seamless integration with the Wonderware System Platform and unparalleled investment protection.

InTouch software is an open and extensible HMI with cutting-edge graphical capabilities providing incredible power and flexibility for application design with connectivity to the broadest range of systems and devices in the industry.

Whether you're an engineer or an operator, an end-user or a system integrator, an OEM or a VAR, Wonderware InTouch HMI gives you the breakthrough capabilities you need, to realize your own breakthrough improvements in operational and engineering productivity.

## Powerful and Sophisticated, Easy to Use

Already established as the world's favorite HMI and used in over one-third of the world's plants, in virtually every country and industry, Wonderware InTouch software raises the bar for excellence with a host of features and capabilities, including:

- **Vibrant, resolution-independent ArcestrA graphic capabilities, for realism, clarity and attention**
- **Versatile, user-friendly, multi-user development and editing environment for collaborative engineering productivity**
- **Powerful self-contained ArcestrA graphical symbols with integrated scripting and connectivity to preserve engineering effort through re-use and standardization**
- **Unprecedented power and flexibility with comprehensive scripting and graphical animation capabilities enables software engineers as well as non-programmers and novices to quickly customize application functions**
- **Complete control with the Wonderware Development Studio, providing a single consistent environment for centralized management and remote deployment of HMI applications everywhere, including the new Wonderware Compact Panels.**
- **Incredible scalability from simple single-node HMI to enterprise-wide supervisory solutions using the Wonderware System Platform**
- **Comprehensive library of pre-built, eye-popping graphical symbols and faceplates**
- **Built-in features for consistent handling and visualization of data quality**
- **Complete backwards compatibility with existing InTouch software applications**
- **Operational features that provide clear, clutter free, accurate and compelling visualization, while greatly expanding the amount of information available**

InTouch software enables engineers to become more productive and creative, in building compelling, intuitive, secure, reliable and maintainable HMI, SCADA and MES applications while reducing application development costs.

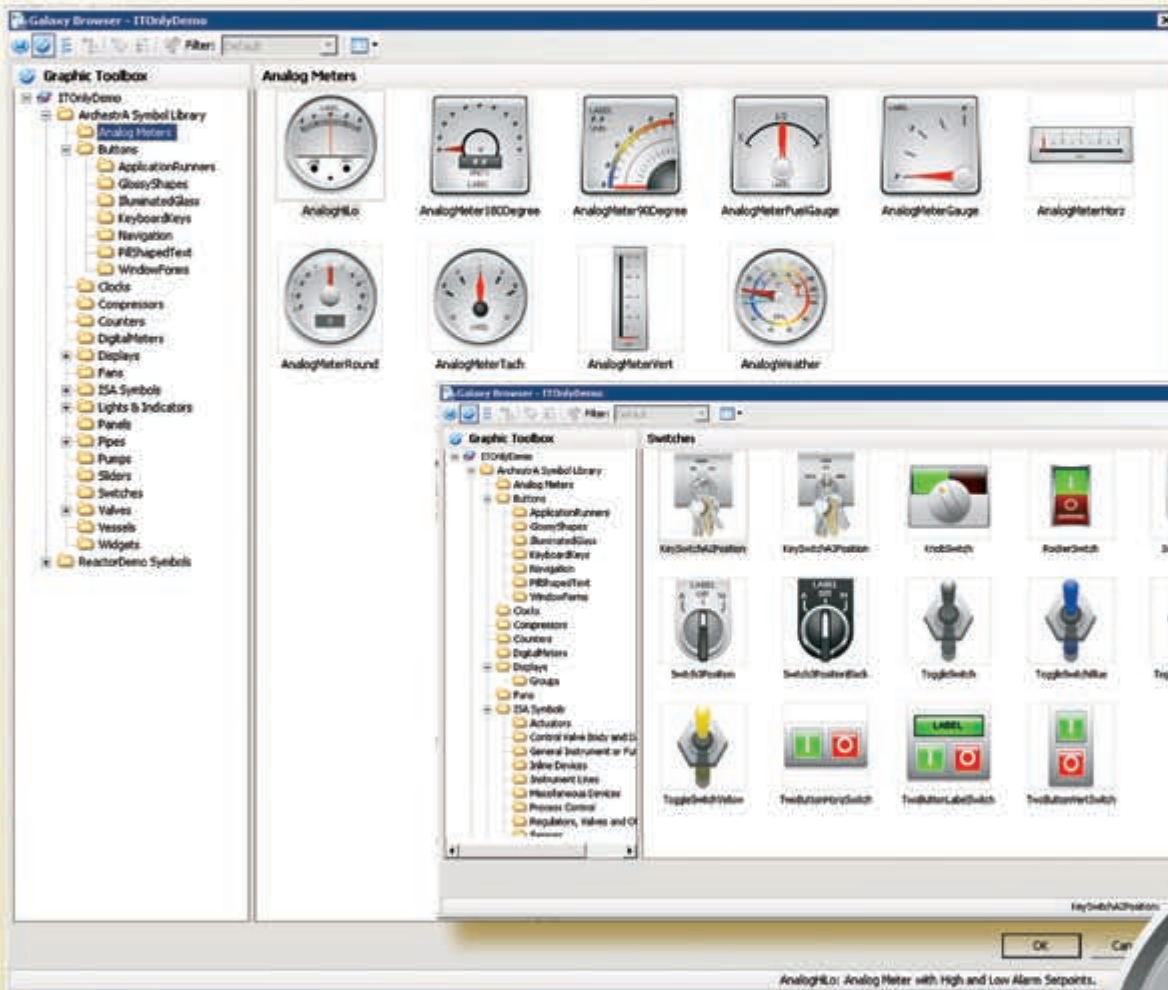
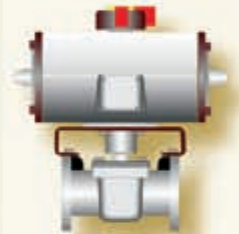


# Breakthrough Visualization Capabilities

InTouch software empowers you to quickly and easily develop custom graphical views of your real-time industrial processes.

InTouch software provides a comprehensive range of graphics primitives from which graphical symbols may be created, including arcs, chords, pies, curves and Microsoft Windows® common controls as well as the ability to create complex shapes by combining simpler shapes together.

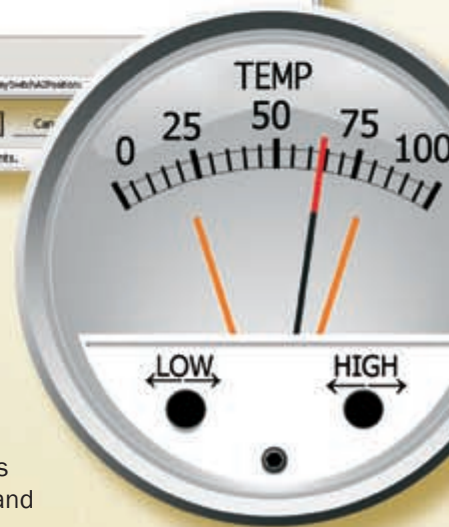
Advanced graphic attribute manipulation enables extremely powerful and precise control, via built-in animation or scripting of an incredible range of graphic attributes including transparency, smooth shading, fill style, line style, orientation, size, position and visibility enabling engineers to exercise their imagination and creativity to represent automation environments with style, utility and efficiency.



## Ready-to-use Symbol Library

InTouch software comes equipped with an extensible ArchestrA symbol library containing over 500 professionally designed ArchestrA graphic symbols, most with customizable 'intelligence' already incorporated, giving you drag-and-drop access to pre-built engineering components.

Library symbols may be used out-of-the-box or customized as needed. You may add your own new or modified symbols, or you may create your own special libraries of symbols to suit your engineering and development requirements.





# Versatility and Extensibility

Consistent built-in primitives for quality provide quality information for acquired data in a consistent form making it extremely easy to view and act upon changes in data quality.

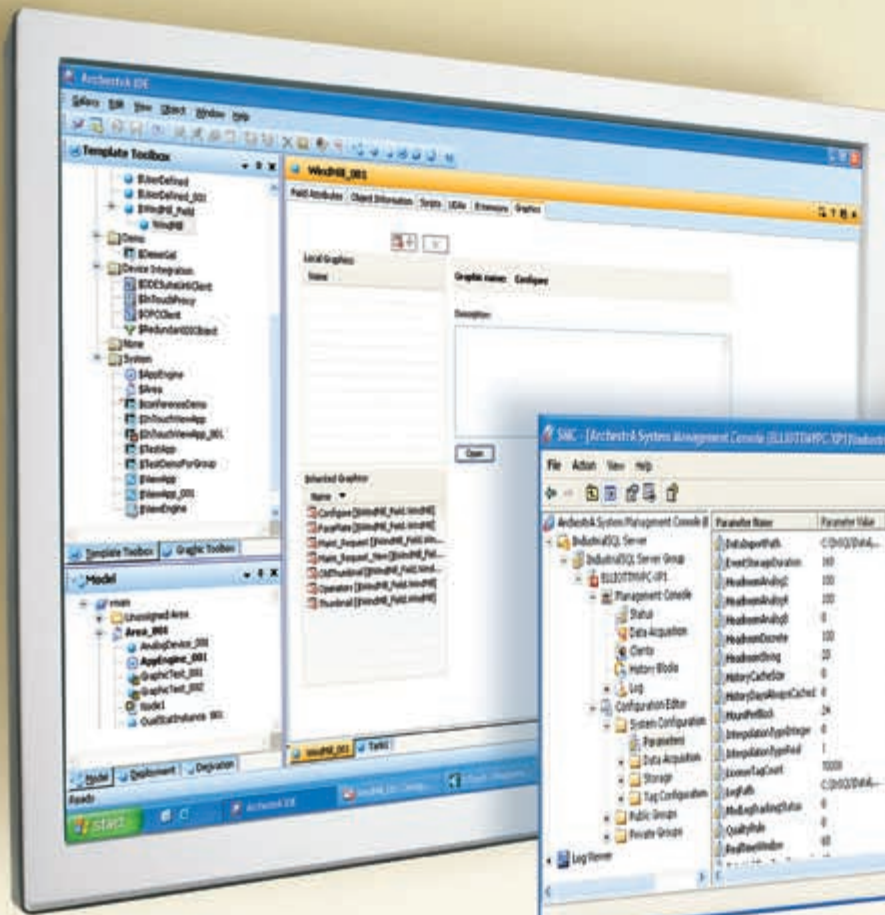
The InTouch graphics environment offers incredible power and choice to use or mix together vector graphics, bitmap graphics, library symbols, .NET controls and legacy ActiveX controls.

Archestra symbols directly support embedded .NET controls, giving you the freedom for unrestricted application extensibility without programming. They also offer access to standard controls such as Web browsers, desktop applications, mapping tools, ERP components and any other application which provides .NET compliant controls.

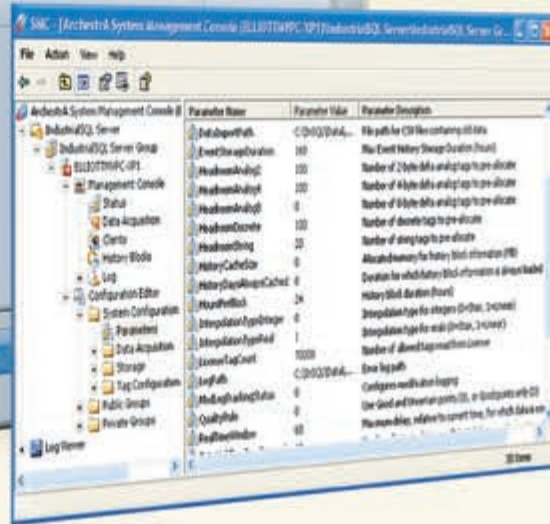


**Archestra symbols directly support embedded .NET controls, giving you the freedom for unrestricted application extensibility without programming.**





*The ArchestrA IDE provides powerful multi-user features, check-out and check-in of objects and symbols under development, and graphical feedback to developers of significant changes by team members.*

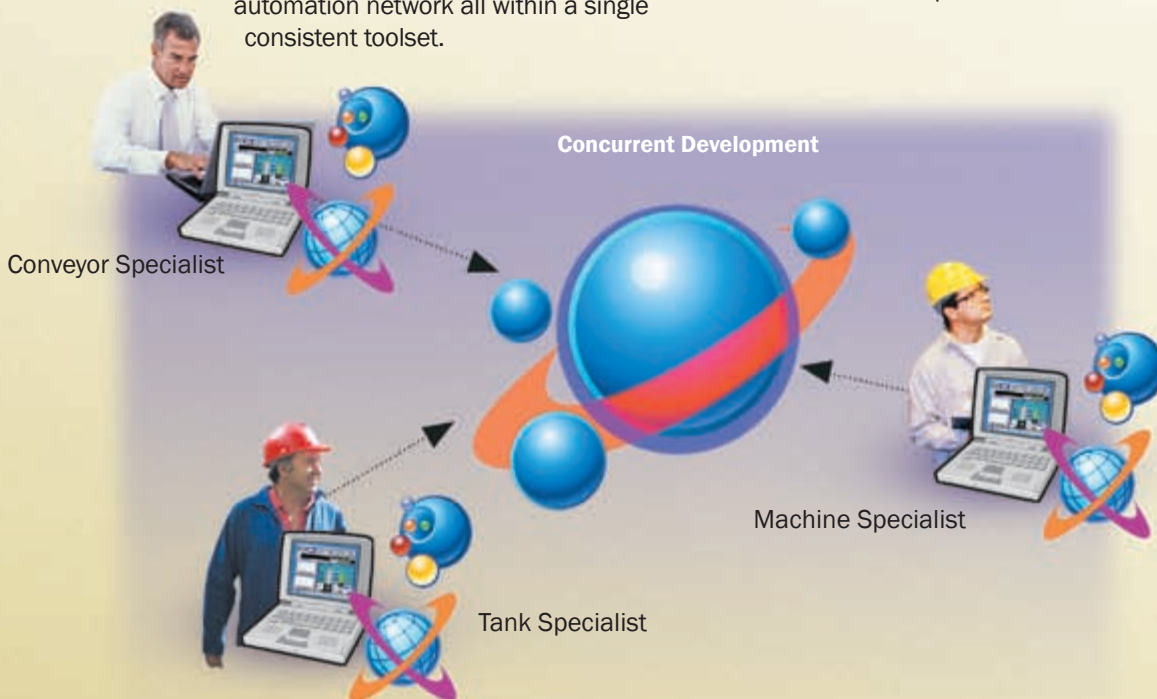


## One Powerfully Simple Development Environment

The Wonderware Development Studio preserves and expands the legendary ease of use and now includes a common Integrated Development Environment (IDE) for both the Wonderware System Platform and InTouch HMI. This enables engineers and developers to create applications of unprecedented power, flexibility and scalability, from the smallest HMI application to the largest enterprise automation network all within a single consistent toolset.

The feature-rich ArchestrA IDE found in both InTouch HMI and System Platform provides powerful multi-user features, check-out and check-in of objects and symbols under development, and graphical feedback to developers of significant changes.

The ArchestrA IDE provides access to rapid propagation of changes throughout an application and even across multiple networked PC nodes.





# Standardize, Organize, Customize

InTouch HMI enables you to quickly create applications that adhere to company standards yet are versatile enough to be deployed strategically throughout an organization using the best-suited devices.

InTouch software provides a powerful hierarchical project viewer allowing the InTouch HMI tag database to be logically managed in organized groups to simplify the creation and maintenance of InTouch HMI applications.

The powerful QuickScript Editor enables you to extend and customize applications to address specific system requirements whether you are an expert software engineer or a non-programmer.

Scripts can be configured to execute based on numerous parameters, such as specific process conditions, data changes, application and windows events, keyboard strokes and ActiveX or .NET control events.

Users also can develop a library of scripts that can be re-used to simplify the application resulting in decreased initial engineering and application maintenance time, as well as deployment.

With features like InTouch Fast Switch from development mode to runtime mode, and instant previews in the ArchestrA symbol editor, developers can quickly determine how their applications will look and behave before deploying them into a production environment.

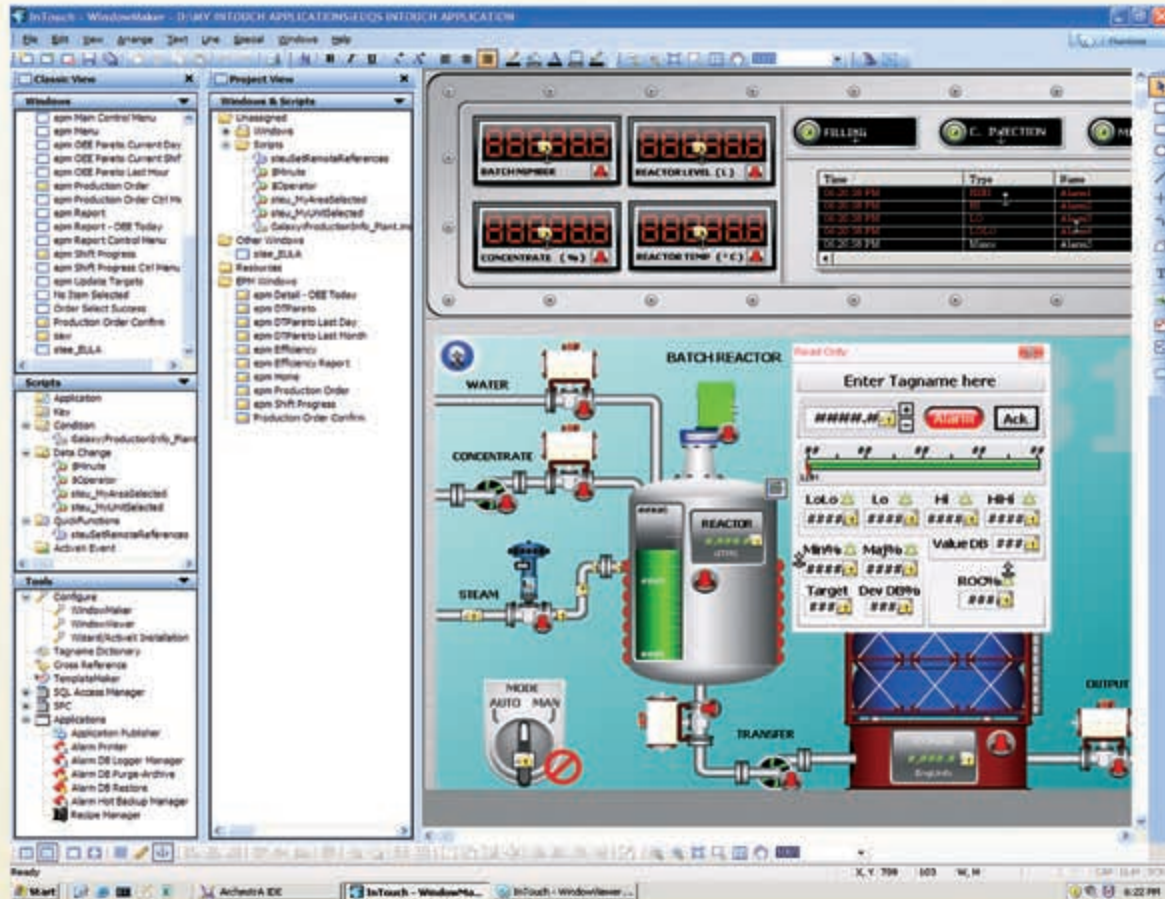
Dynamic resolution conversion provides real-time scaling between screen resolutions, so you can view and develop InTouch applications on a variety of screen resolutions without having to convert the application.



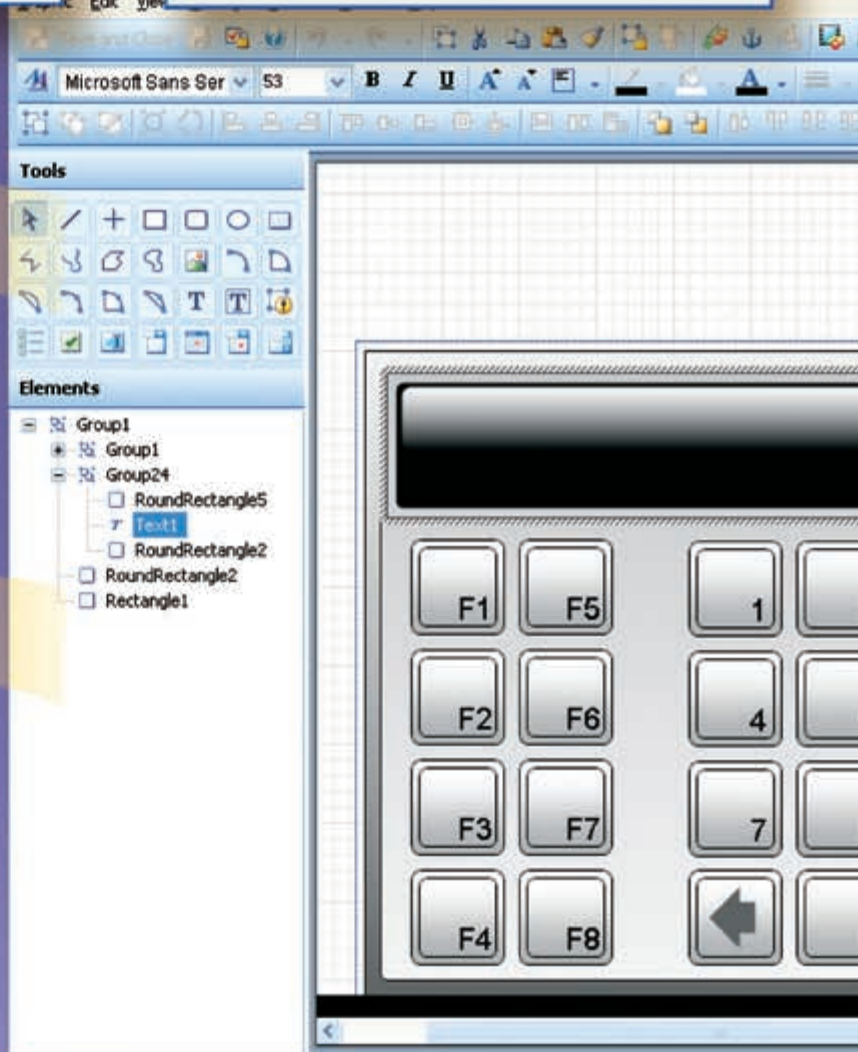
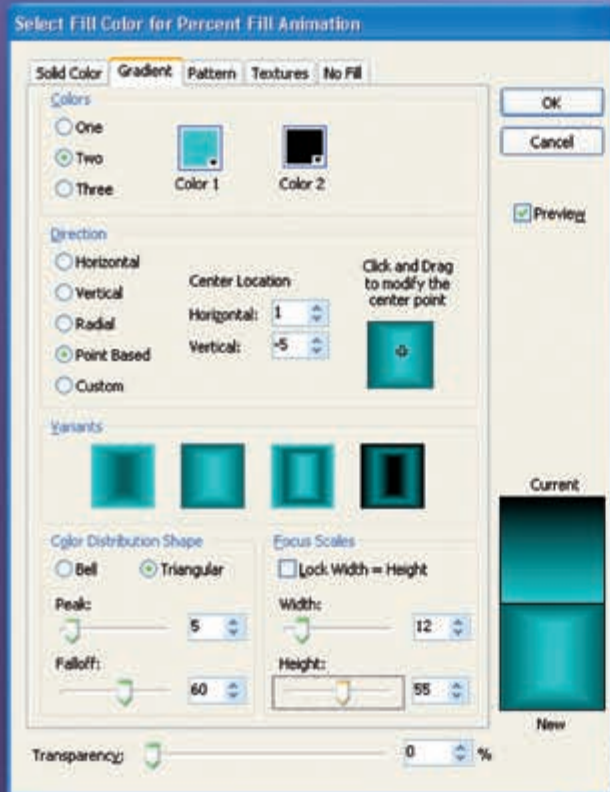
**The InTouch HMI tag database is logically managed in organized groups to simplify the creation and maintenance of InTouch applications.**

Dynamic resolution conversion provides real-time scaling between screen resolutions, so you can view and develop InTouch applications on a variety of screen resolutions without having to convert the application.

**Organize and view plant functionality and operations**



# Wonderware InTouch Graphical Editing Environment



**Comprehensive graphic toolbox unleashes your creativity.**

**Every graphic element and sub-group is individually editable providing tremendous control of your graphics with absolute ease.**

Double click the 'Text1' Text to add animations.



Every attribute of your graphic can be individually animated.

### Select Fill Color for Percent Fill Animation

**Solid Color** | Gradient | Pattern | Textures | No Fill

Colors  
 One  
 Two  
 Three

Color 1: [Red] Color 2: [Green]

Direction  
 Horizontal  
 Vertical  
 Radial  
 Point Based  
 Custom

Center Location  
Horizontal: 18  
Vertical: -31

Click and Drag to modify the center point: [Diagram]

Variants: [Four circular gradient preview icons]

Color Distribution Shape  
 Bell  Triangular

Focus Scales  
 Lock Width = Height

Peak: 27  
Falloff: 95  
Width: 12  
Height: 75

Transparency: 7 %

OK Cancel Preview

### Animation

Textures: No Fill

Grid of pattern options

Horizontal

Foreground: [Color 1] Background: [Color 2]

Transparency: 0 %

Current [Color Swatch] New [Color Swatch]

OK Cancel Preview

**Properties**

<b>Graphic</b>	
Name	Text1
<b>Appearance</b>	
X	440
Y	170
Width	127
Height	80
Angle	0
AbsoluteOrigin	503, 210
RelativeOrigin	0, 0
Text	LCD
Transparency	0
Locked	False
<b>Text Style</b>	
TextColor	Solid

**Animations**

No Animations are configured. Click '+' to add.

No Animations Configured  
No Animations are configured. Click '+' to add.

572, 527 X,Y: 440,170 W,H: 127,80 Angle: 0

### Edit Animations

Visualization	Interaction
Visibility	Disable
Fill Style	User Input
Line Style	Slider Horizontal
Text Style	Slider Vertical
Blink	Pushbutton
% Fill Horizontal	Action Scripts
% Fill Vertical	Show Symbol
Location Horizontal	Hide Symbol
Location Vertical	
Width	
Height	
Orientation	
Value Display	
Tooltip	

No Animations configured. Click '+' to add.

# Actionable Intelligence

Knowledge is power; and sophisticated, intelligent and interactive graphics that accurately communicate the right information are the key to this knowledge.

Powerful, intelligent graphics capabilities provide context to data, enable faster analysis, and facilitate better and more rapid understanding of displayed information.

Operators are presented the right information, at the right time, and in the right format. This empowers you to make timely, informed decisions, take corrective actions to reduce costs and operational incidents, and improve productivity across the entire operation.

You will be able to take advantage of robust, reliable, consistent HMI solutions with clutter-free screens and intelligent size-scalable faceplates.

InTouch data aware controls, intelligent graphical objects and built-in provision of quality information, plus robust .NET controls give you intuitive, accurate and consistent visualization of operational processes making you more productive, efficient and effective.

Dynamic symbol scaling, "Tooltips" and "mouse-over" capabilities enable you to obtain more information, more quickly about operational conditions in streamlined, uncluttered screens that provide focus to the task at hand.

Great multi-monitor support enables you to construct comprehensive multi-screen HMI applications with precise control of visualization and interaction

**Great multi-monitor support enables you to construct comprehensive multi-screen HMI applications with precise control of visualization and interaction.**





*InTouch provides quick, accurate visibility to system alarms and significantly enables faster responses in critical situations.*



## React and Respond in Real-Time

Timely visibility to system alarms and the ability to acknowledge them promptly can significantly reduce costly downtime, enable faster responses in critical situations, and provide opportunities for preemptive resolution of potentially critical situations.

Powerful InTouch Software troubleshooting tools include:

- **Distributed Alarm Display** – provides comprehensive summary information of current alarms
- **Alarm Viewer Control** – an ActiveX control that provides both current summary and historical session alarm information
- **Database View Control** – displays a historical view of alarms for analysis and incident review

InTouch software also provides runtime configurable tools to enable users to quickly determine the nature and location of an alarm, with options for supporting fast analysis and response to alarm conditions.

## Connect and Collect

InTouch software can connect to virtually any industrial automation and information system and devices using hundreds of available I/O and OPC servers that are designed to work with Wonderware products.

The InTouch HMI is capable of serving as an OPC client or an OPC server, and Wonderware servers provide access to InTouch application data through:

- **OPC technology**
- **Wonderware's SuiteLink protocol**
- **Microsoft DDE communications**

Third-party developers also can use the ArchestrA DA Server toolkit to create additional servers that incorporate one or all of the communication methods listed above.

## IT Friendly, Manageable, Secure, Extensible, Industry Standard

InTouch software makes it easier, more time efficient and less costly for you to manage HMI applications in larger deployments.

InTouch software is IT-friendly with a centralized application management environment, a robust centralized security model, extensibility capabilities and built-in diagnostics.

InTouch software is easy to manage, secure and support with its data aware controls featuring built in primitives for data security, quality, and status as well as support for .NET controls, support for Terminal Services, Office 2007 and Microsoft Vista.

InTouch HMI gives you flexibility with support for existing InTouch HMI applications alongside new graphics so you can upgrade one node at a time at your own pace.

InTouch software enables you to utilize industry-leading standards, as well as adopt your own internal standards, which can be used throughout your operation, ensuring consistency, minimizing customizations and reducing the risk of unplanned incidents.



## Create International Applications for Global Use

InTouch software is fully supported in English, German, French, Japanese and Simplified Chinese, with additional languages available and supported around the world by local distributors.

Support for UTC time, local time, time offsets, and daylight savings time greatly simplify the task of creating global applications.

InTouch software leverages Microsoft Tablet PC features such as inking and annotation enabling you to write values and notes in your own handwriting.



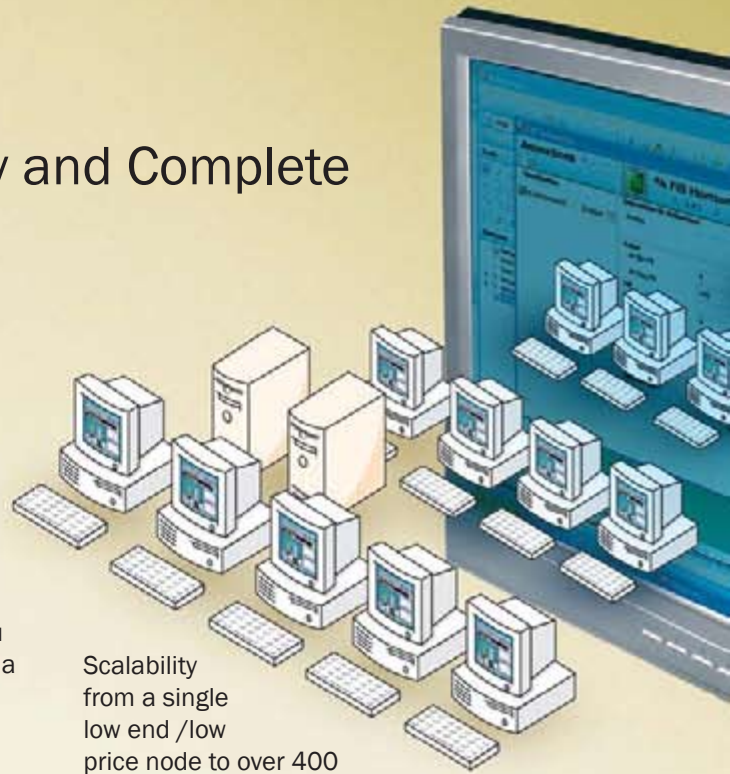
# Architectural Flexibility and Complete Scalability

InTouch software can be used as self-contained, standalone visualization stations or as an integrated part of the Wonderware System Platform distributed architecture.

A Terminal Services edition of InTouch software is available which can support multiple Terminal Services sessions from a single server on appropriately configured hardware.

As the easiest to learn HMI in the industry, you can always start small and very quickly create a running application in production.

When you are ready to expand, leverage the flexible and scalable ArcestrA software architecture to increase system size and complexity at your discretion to meet future requirements.



Scalability from a single low end /low price node to over 400 networked PCs

Start with one node and be prepared to expand to 1 million I/O.



***InTouch software makes it easier, more time efficient and less costly for you to manage HMI applications in larger deployments.***

## Security Where, When and How You Need It

InTouch software provides a selection of integrated security models and options to match your requirements, including:

- **Access-Level Password Security** – limits user capabilities in the InTouch HMI application based on areas of responsibility and authority
- **Microsoft Windows Authentication** – grants permissions to InTouch HMI users authenticated on a domain controller or local computer, based on user identity and group affiliations
- **Data Level Security** – customers who have adopted the Wonderware System Platform also enjoy secure integration from InTouch software all the way down to the level of each data element or attribute.
- **FDA 21 CFR Part 11 Functionality** – built-in authentication fields, security script functions and variables make it easier for users to comply with government regulations
- **InTouch Read Only Software** – a view-only runtime version of the InTouch application which prevents changing data or execution of controls



## Unequaled Investment Protection

Wonderware's continuing uncompromising and unequaled history of continuous support of our customers existing investments, InTouch applications created with the very first HMI version can be upgraded and used with the very latest InTouch software with ease.

All of the features of InTouch ArcestrA graphics work in concert with the full range of capabilities available with earlier versions of InTouch software.

Existing InTouch HMI applications can be upgraded to InTouch HMI and work with no modifications whatsoever!

InTouch HMI provides the capabilities to modify and extend these applications with all of the new features whenever you want or need to do so.

# Breakthrough Architecture—No Limits

Used together, the InTouch HMI and Wonderware System Platform provide an information and automation application environment of unprecedented power, scalability and ease of use; significantly greater than the sum of the parts.

The integration of the ArcestrA IDE and the new graphics capabilities of InTouch HMI provide a smooth upgrade path for InTouch software users into the world of ArcestrA applications and the Wonderware System Platform. The upgrade path offers users the benefits of scalability and increased functionality without sacrificing prior investments in InTouch HMI application development.

While the Wonderware System Platform is not required to run InTouch software, it's the ultimate add-on for InTouch software that will redefine your expectations for a supervisory system:

- **ArcestrA Graphics and Application Objects** – the powerful component objects within the System Platform encapsulate InTouch ArcestrA graphics along with application logic, I/O, history and data storage, enabling drag-and-drop solution engineering. This is an incredible time saver, which also improves the consistency and maintainability of applications.
- **Common Plant Model** – moves beyond the simple tag databases of traditional HMIs. As a logical representation of physical equipment and processes, the common plant model of the Wonderware System Platform abstracts equipment and systems into a more powerful and productive application development environment with extensive benefits for engineering reusability and reduced lifecycle cost.
- **Managed Applications** – enable easy and robust remote application deployment and management from a centralized environment, with change propagation across your entire network.
- **Extensible Universal Application Platform** – builds on the rich graphic capabilities of InTouch HMI to extend into all types of plant and industrial applications.
- **Automatic Configuration of System-Wide Functions** – so that information is configured once centrally, and can be re-used for any application that needs it, including graphics, history, alarm and event functions, security, logic, scripting, inputs and outputs.
- **Common Namespace** – across a Wonderware System Platform separates application code from device communications so both can be easily managed and updated, allowing re-use on any machine or application.
- **Extended Data Security and Status Indication** – builds on the capabilities inherent in InTouch software. The Wonderware System Platform extends the level of granularity in the definition and response for data security and status indication in a system.
- **Wonderware Production & Performance Management Modules** – provide a comprehensive set of functional modules that can extend the Wonderware System Platform to fit any production or performance management need. These modules help customers optimize equipment operations and performance, improve manufacturing quality, enforce manufacturing and batch execution as well as integrate plant application to enterprise systems.

## World-class Customer Support & Services

The Wonderware Customer Support Services Program makes it easy to learn, stay current, gain access to best practices and get assistance from the leading support team in the industry. This program includes access to our extensive online knowledge base center, security center, and web based training. To learn more about this valuable program contact your local sales representative.









## Wonderware and Klinkmann – close cooperation for over 15 years

KLINKMANN has supplied Wonderware automation and reporting software in Russia, Ukraine, Belarus, Estonia, Latvia, Lithuania and Finland for over 15 years. Klinkmann's Wonderware customer base includes all major industries and application areas like oil and gas, machine building, energy, food and beverage, pulp and paper, chemical, water treatment, traffic control and many others.

Klinkmann's customer support and customer training classes, for Wonderware software, in all Klinkmann offices secure optimal skills to all Wonderware users and correct implementation of the software.

Klinkmann development team develops communication software, to support Wonderware software, for all major automation systems incl. Rockwell, Unitronics, Siemens, Schneider, ABB, Metso and for all main data transfer technologies incl. GSM/GPRS/3G, ethernet, fieldbuses and WLAN.

To learn, how Wonderware software can help in your specific application, ask more information from the Klinkmann office closest to you.



Powering intelligent plant decisions in real time.

InTouch11\_en\_0409 L



[www.klinkmann.com](http://www.klinkmann.com)

### Helsinki

tel. +358 9 540 4940  
[automation@klinkmann.fi](mailto:automation@klinkmann.fi)

### St. Petersburg

tel. +7 812 327 3752  
[klinkmann@klinkmann.spb.ru](mailto:klinkmann@klinkmann.spb.ru)

### Moscow

tel. +7 495 641 1616  
[moscow@klinkmann.spb.ru](mailto:moscow@klinkmann.spb.ru)

### Yekaterinburg

tel. +7 343 376 5393  
[yekaterinburg@klinkmann.spb.ru](mailto:yekaterinburg@klinkmann.spb.ru)

### Pyatigorsk

tel. +7 879 331 8441  
[pyatigorsk@klinkmann.spb.ru](mailto:pyatigorsk@klinkmann.spb.ru)

### Samara

tel. +7 846 342 6655  
[samara@klinkmann.spb.ru](mailto:samara@klinkmann.spb.ru)

### Kiev

tel. +38 044 495 3340  
[klinkmann@klinkmann.kiev.ua](mailto:klinkmann@klinkmann.kiev.ua)

### Riga

tel. +371 6738 1617  
[klinkmann@klinkmann.lv](mailto:klinkmann@klinkmann.lv)

### Vilnius

tel. +370 5 215 1646  
[post@klinkmann.lt](mailto:post@klinkmann.lt)

### Tallinn

tel. +372 668 4500  
[klinkmann.est@klinkmann.ee](mailto:klinkmann.est@klinkmann.ee)

### Minsk

tel. +375 17 200 0876  
[minsk@klinkmann.com](mailto:minsk@klinkmann.com)