



*Portfolio*

**ELEGANT**

KITCHEN & BATH

  @ElegantKitchenandBath

1-866-9ELEGANT 201-332-6777



# WOODHARBOR<sup>®</sup>

*Custom Cabinetry*

*Woodharbor is committed to crafting beautiful, functional, and enduring cabinetry for your home. This portfolio is just a small sampling of wonderfully appealing thoughtful designs created with Woodharbor Custom Framed and Frameless Cabinetry to give you and your designer ideas and inspiration for your project.*



*Bring your home  
to life.*

*Barstow door, S-edge, Manor Flat and Slab Drawers, Paintable, Custom Finish (Frameless)*

*Design By: Reed Design to Build*





Perimeter Cabinetry: Oxboro door, A-edge shape, Manor Flat drawer, Maple, White Dove (Frameless)  
Island: Oxboro door, A-edge shape, Manor Flat drawer, Knotty Alder, Weathered Silverwood (Flush Inset)

Design by: Vine Street Design  
Photography by: Kaskel Photo





*Perimeter Cabinetry: Oxboro door, A-edge shape, Manor Flat front, Maple, White Dove  
Island: Oxboro door, A-edge shape, Manor Flat drawer, Knotty Alder, Weathered Silverwood*



*Seabrook door, Double Hip profile, A-edge shape, Knotty Alder, Weathered Silverwood (Frameless)*



*Seabrook door, Double Hip profile, A-edge, Manor Flat Drawer, Knotty Alder, Weathered Silverwood (Frameless)*





*Madison door, Standard Hip profile, A-edge shape, Manor Flat drawer, Coastal White (Flush Inset)*

*Design by: Jill Jordan*





*Madison door, Standard Hip profile, A-edge shape, Manor Flat drawer front, Coastal White*



*Integrated Appliance Panels*



*Chateaux door, A-edge shape, Classic drawer, Cherry, Espresso (Flush Inset)*





Portsmouth door, D-edge shape, Manor Raised drawer, Knotty Alder, Sawyer Smoke Stack (Frameless)

Design by: Carlie Korinek CKD, CK Cabinetry and Design  
Photography by: Jeffrey Volker JLV Enterprises





Portsmouth door, D-edge shape, Manor Raised drawer, Knotty Alder, Sawyer Smoke Stack



Portsmouth door, D-edge shape, Manor Raised drawer, Knotty Alder, Sawyer Smoke Stack  
Island: Portsmouth door, D-edge shape, Manor Raised Drawer, Maple, Heritage White







West End Elite door, Unique edge shape, Slab drawer, Reconstituted Zebra wood, Natural (Frameless)

Design by: Steve Campbell, Trillium Cabinet Company





West End Elite door, Unique edge shape, Slab drawer, Reconstituted Zebrawood, Natural



West End Elite door, Unique edge shape, Slab drawer, Reconstituted Zebrawood, Natural





*Cameron door, A-edge shape, Slab drawer, Quarter Sawn White Oak, Espresso (Full Overlay)*

*Design By: Michael McIntyre, McIntyre Millwork & Hardwood*





*Cameron door, A-edge shape, Slab drawer, Quarter Sawn White Oak, Espresso*



*Cameron door, A-edge shape, Slab drawer, Quarter Sawn White Oak, Espresso*





Seabrook door, S-edge shape, Manor Flat drawer, Knotty Alder, Rustic Timber (Frameless)

Design by: Carlie Korinek CKD, CK Cabinetry and Design  
Photography by: Jeffrey Volker JLV Enterprises





*Seabrook door, S-edge shape, Manor Flat drawer, Knotty Alder, Rustic Timber*



*Seabrook door, S-edge shape, Manor Flat drawer, Knotty Alder, Rustic Timber*







*Madison door, A-edge shape, Slab drawer, Maple, Honey (Full Overlay)*





*Madison door, A-edge shape, Slab drawer, Maple, Honey*



*Madison door, A-edge shape, Slab drawer, Maple, Honey*





Somerlake door, Standard Hip profile, A-edge shape, Manor Flat drawer, Cherry, Walnut/Black Glaze (Full Overlay)

Design by: Mike May, Woodharbor Design Showroom





*Cameron, A-edge shape, Slab drawer, Cherry, Walnut*



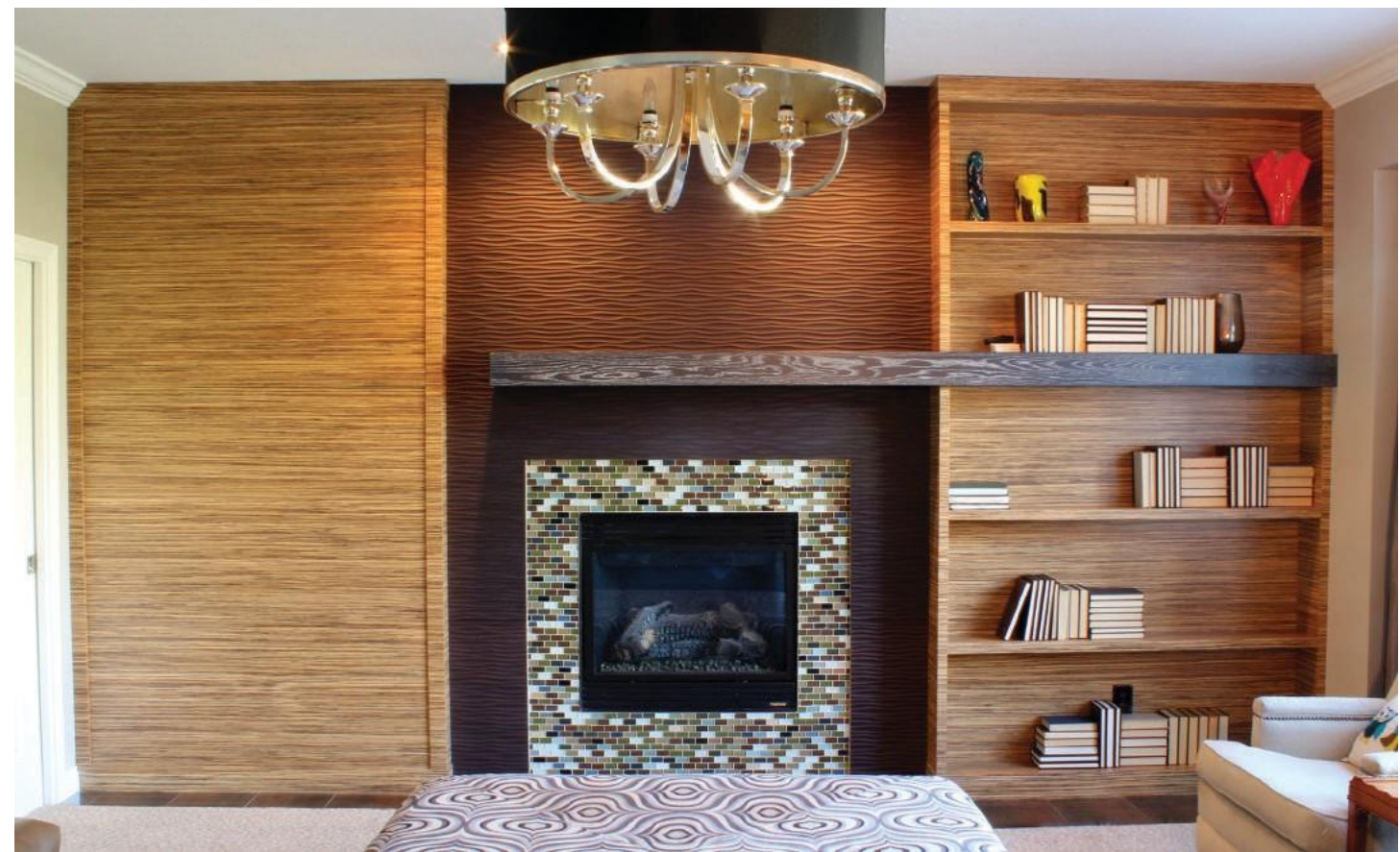
*Georgetown door, Unique edge shape, Manor Flat drawer, Coastal White*



*Cameron door, A-edge shape, Slab drawer, Cherry, Espresso*



*Cameron door, A-edge shape, Slab drawer, Cherry, Espresso*



*Reconstituted Zebra wood, Natural (Frameless)*





*Seabrook door, Prairie profile, S-edge shape, Manor Flat drawer, Cherry, Clove (Full Overlay)*





Seabrook door, Prairie profile, S-edge shape, Manor Flat drawer, Cherry, Clove



Seabrook door, Prairie Profile, A-edge shape, Manor Flat drawer, Knotty Alder, Clove



Cherry, Vineyard library shelves



Nottingham and Brittany doors, A-edge shape, Brittany Styled drawer, Cherry, Rustic Chestnut (Full Overlay)

Design by: Augusta Tapia



# Accessories



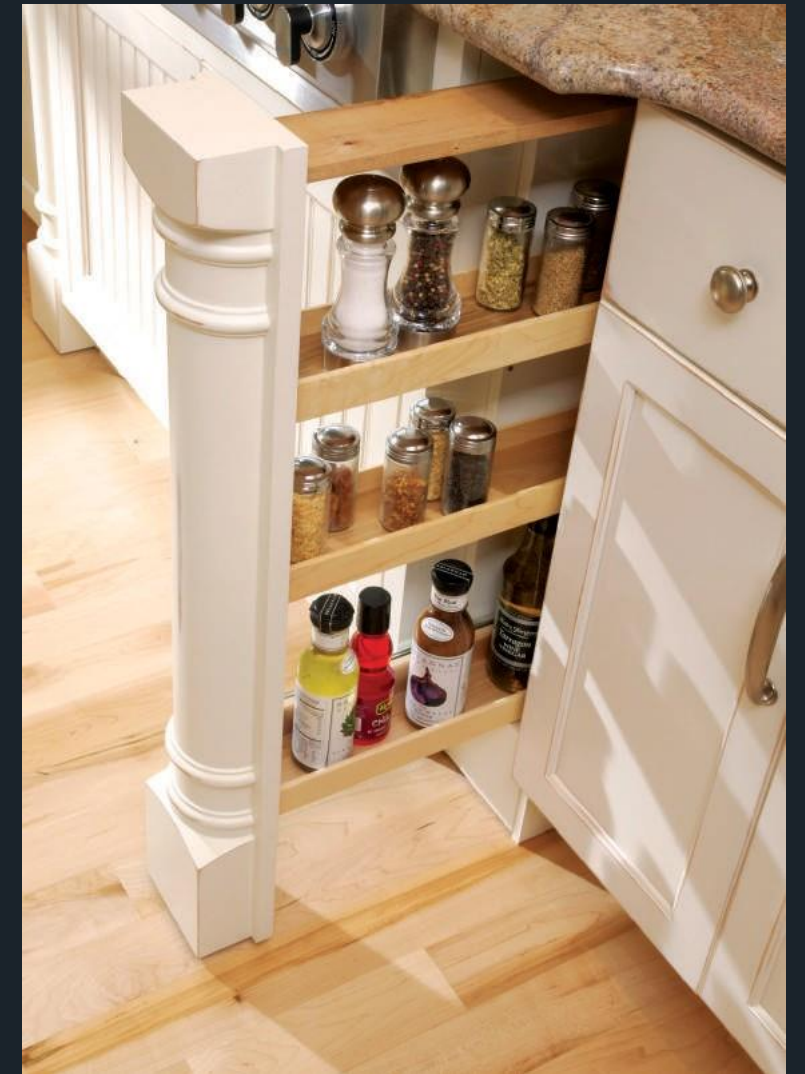
Corner Turntable



Spice Rack



Tray Partition



Base Pull-Out Column



Maple Roll-Out Shelves



Knife Block



Dish Drawer Organizer



Cutlery Tray/Spice Tray





Mantel Pull-Out Pantry



Bi-Fold Flip Up Lift System



Appliance Garage Lift Up System



Up and Over Lift System



Adjustable Drawer Partitions



Integrated Appliance Panels



Basket Cabinet



Double Roll-Out Waste



Scooped Drawer



Integrated Filing System



Bring your home  
to life.



**Quality Products, Healthy Environment**

The manufacturing of all Woodharbor products is certified by the Kitchen Cabinet Manufacturers Association for promoting green principles and renewal of natural resources.

**ELEGANT**  
KITCHEN & BATH

  @ElegantKitchenandBath

1-866-9ELEGANT 201-332-6777

 **WOODHARBOR**  
*Custom Cabinetry*  
3277 9th Street SW □ Mason City, IA 50401  
Ph: 641.423.0444 □ [www.woodharbor.com](http://www.woodharbor.com)



4.2018 tp/cd