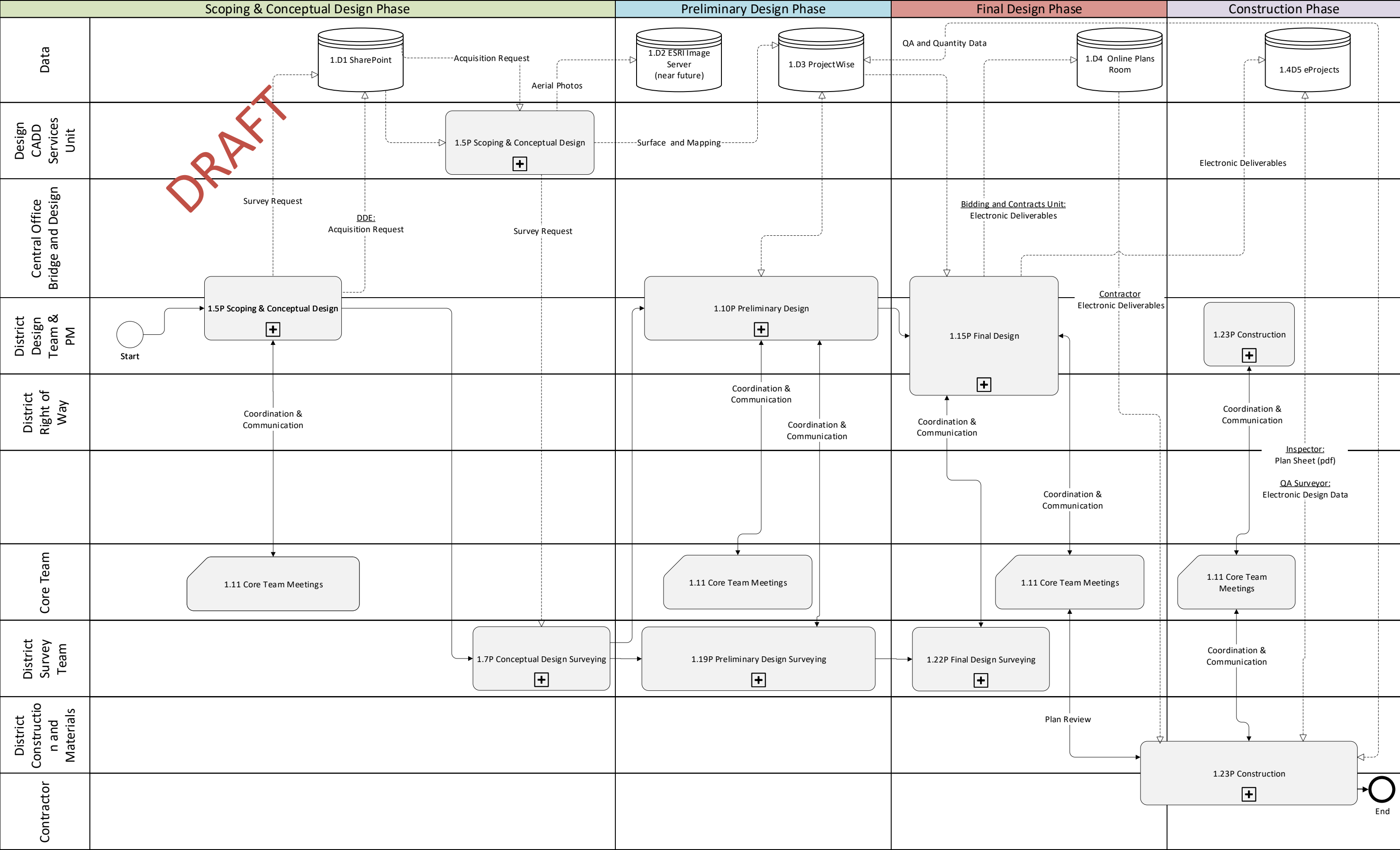


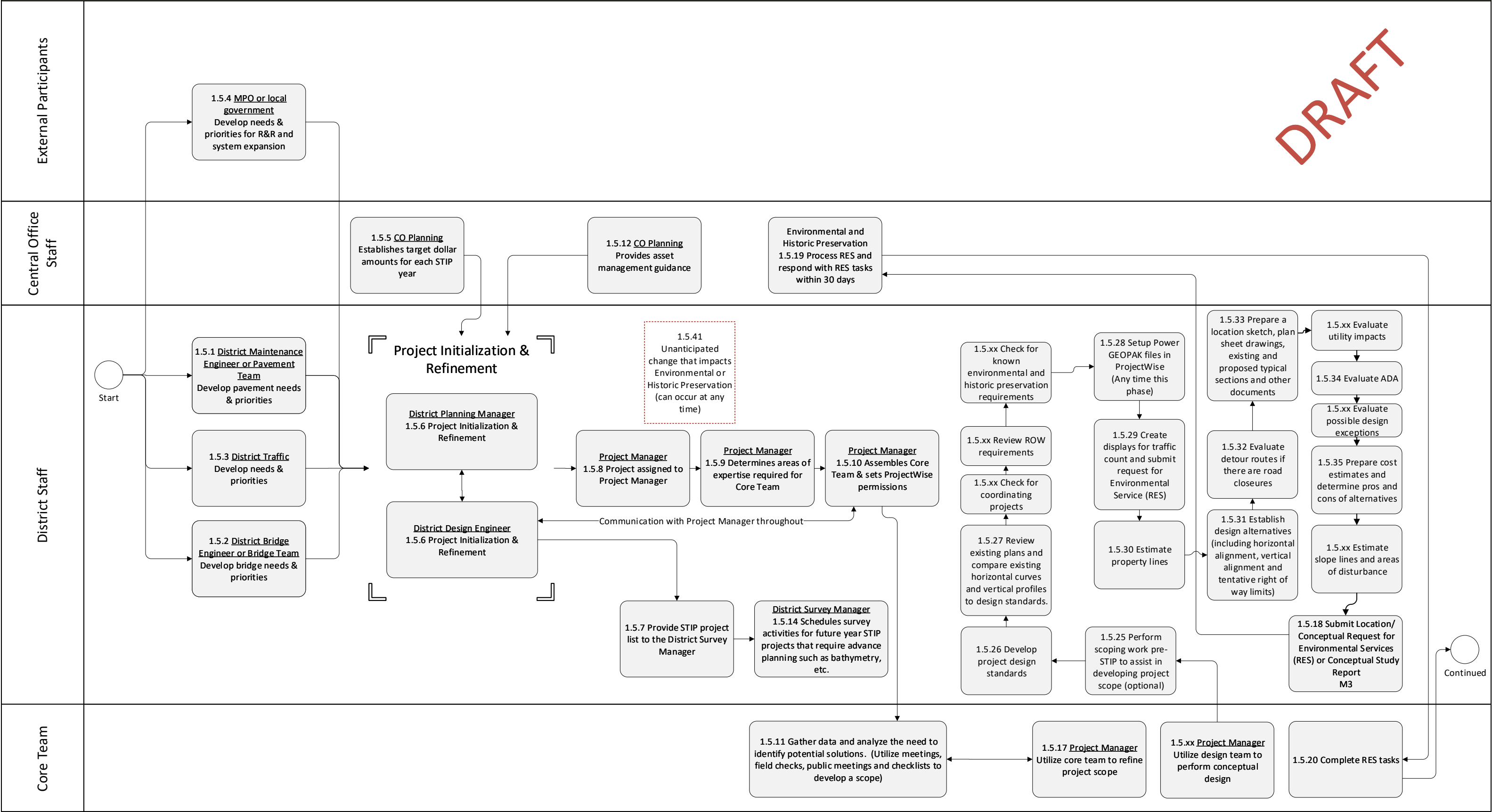
1. Project Development Process - CADD and Surveying



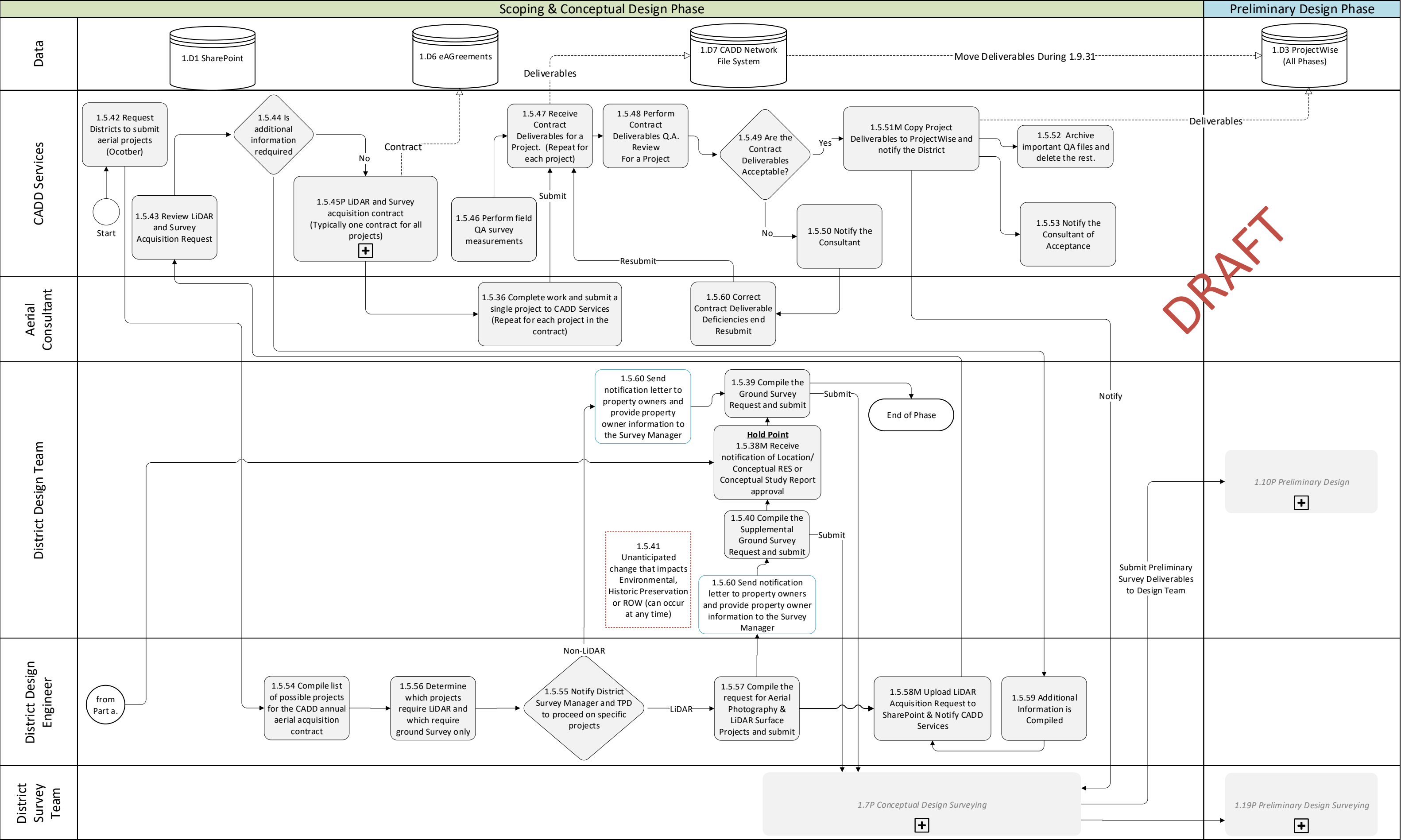
1.5a Scoping & Conceptual Design Process (part 1 of 2)

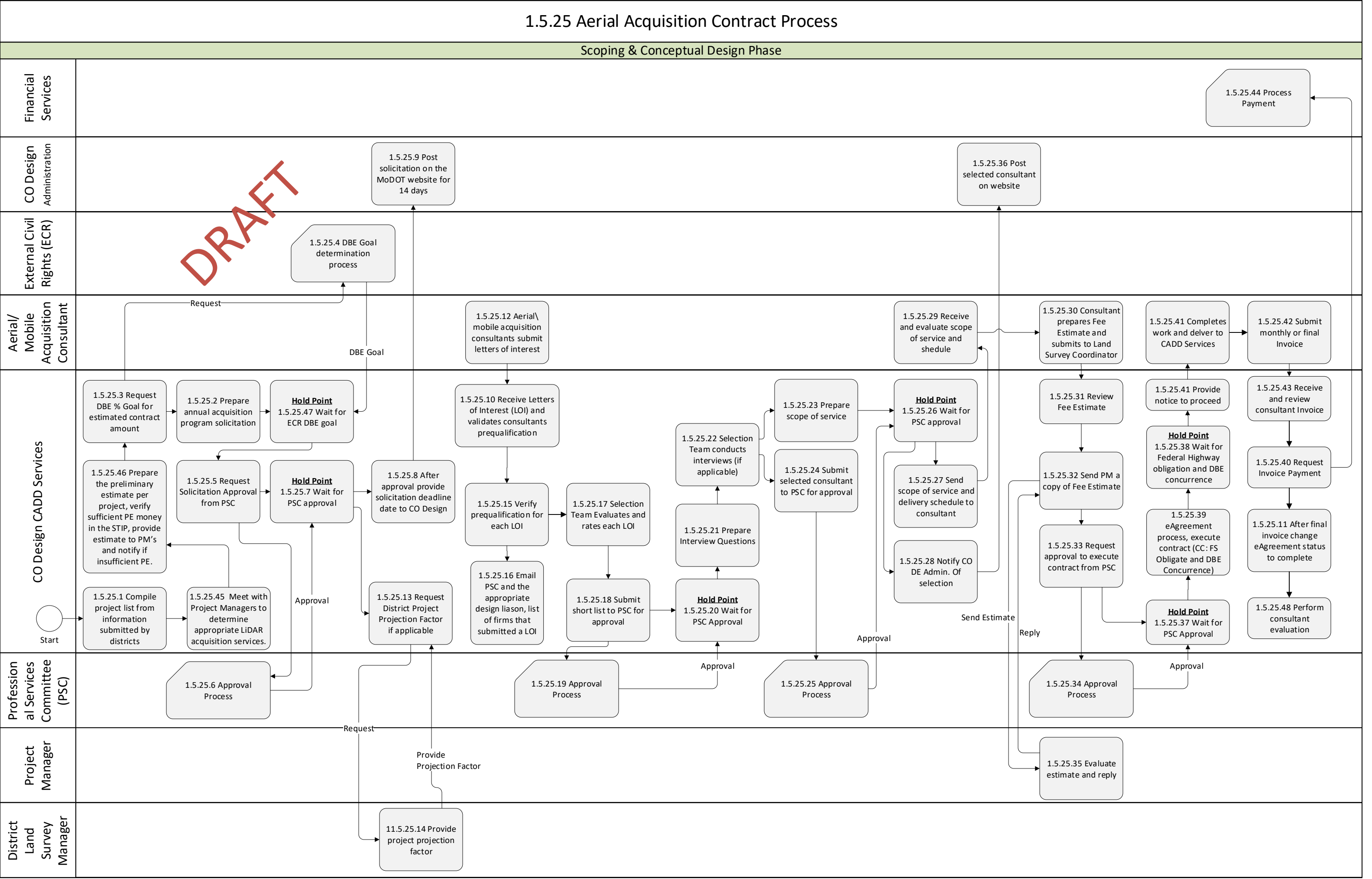
Scoping & Conceptual Design Phase

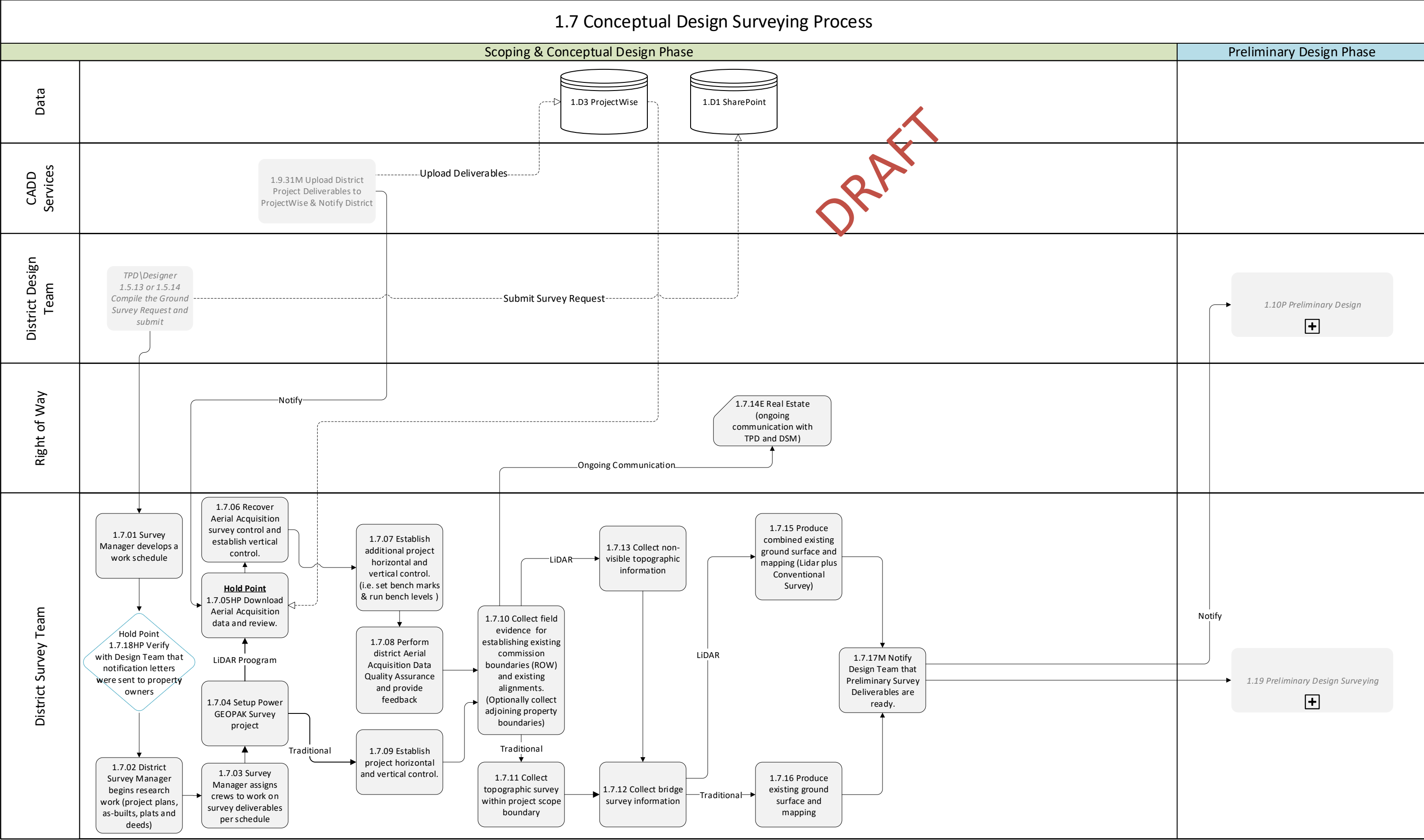
DRAFT



1.5b Scoping & Conceptual Design Process (part 2 of 2)



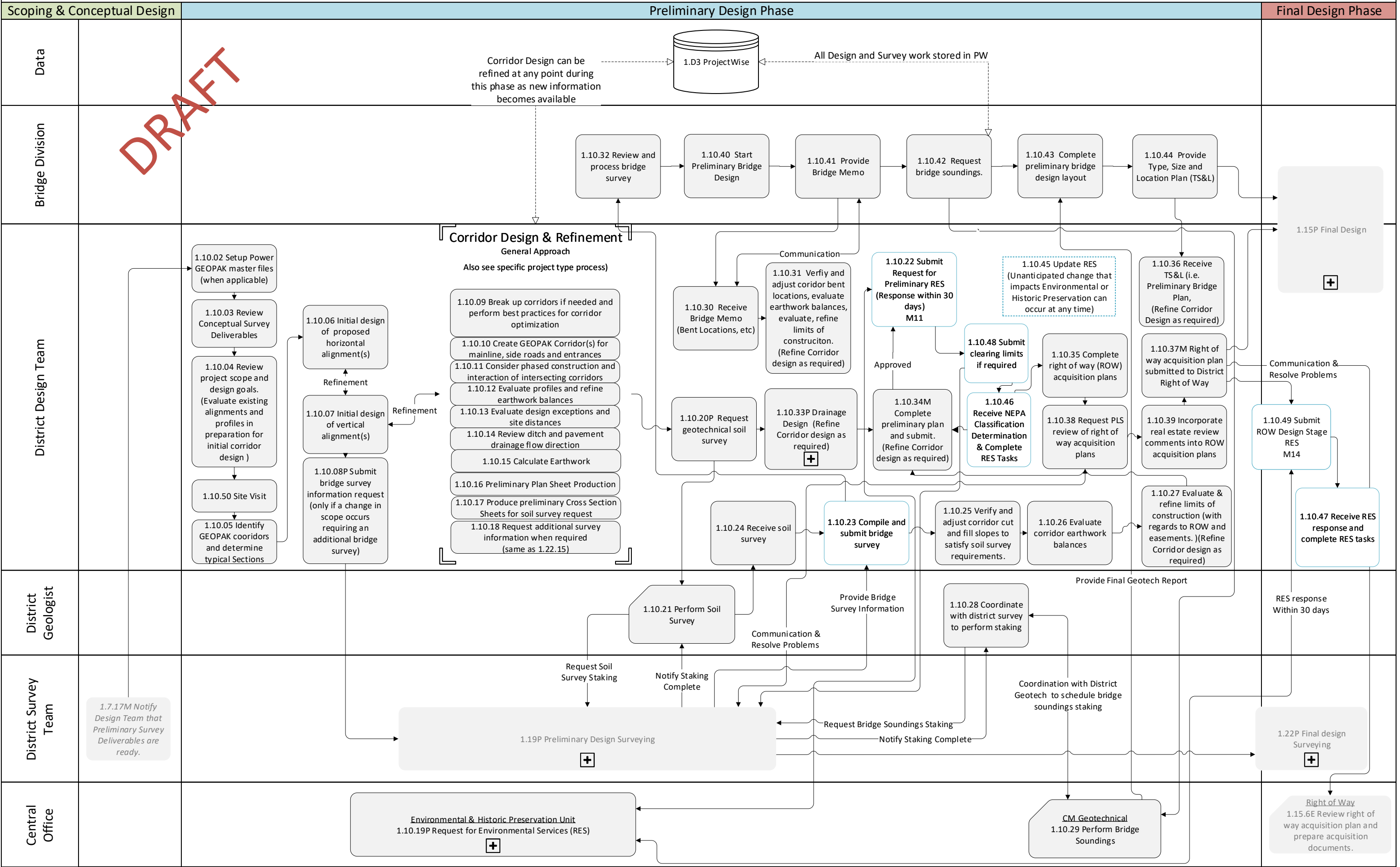




DRAFT

The Design Team is notified by the Survey Team when survey deliverables are updated. Likewise, the Survey Team is notified by the Design Team when any of the design data has been changed that may impact the survey workflow.

1.10 Preliminary Design Process

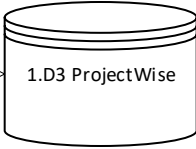


1.10.33 Drainage Design Process

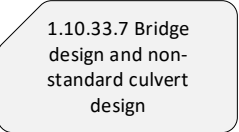
Preliminary Design Phase

DRAFT

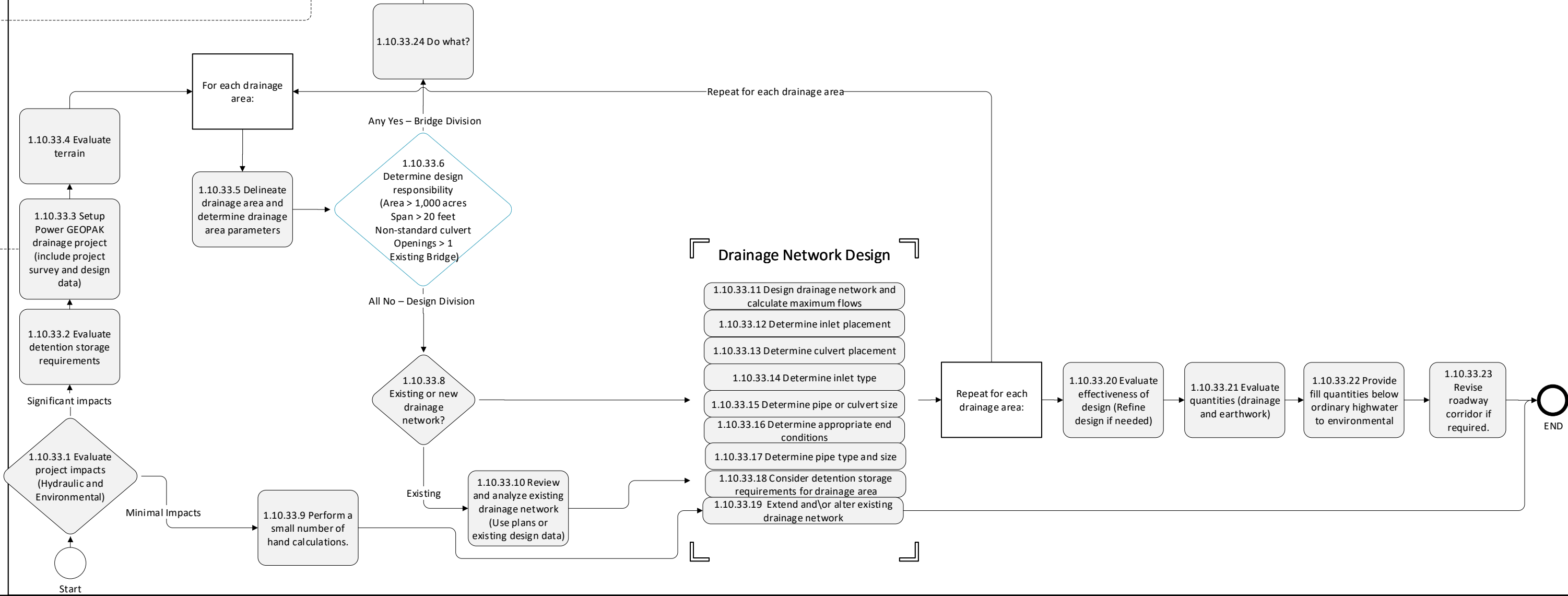
Data



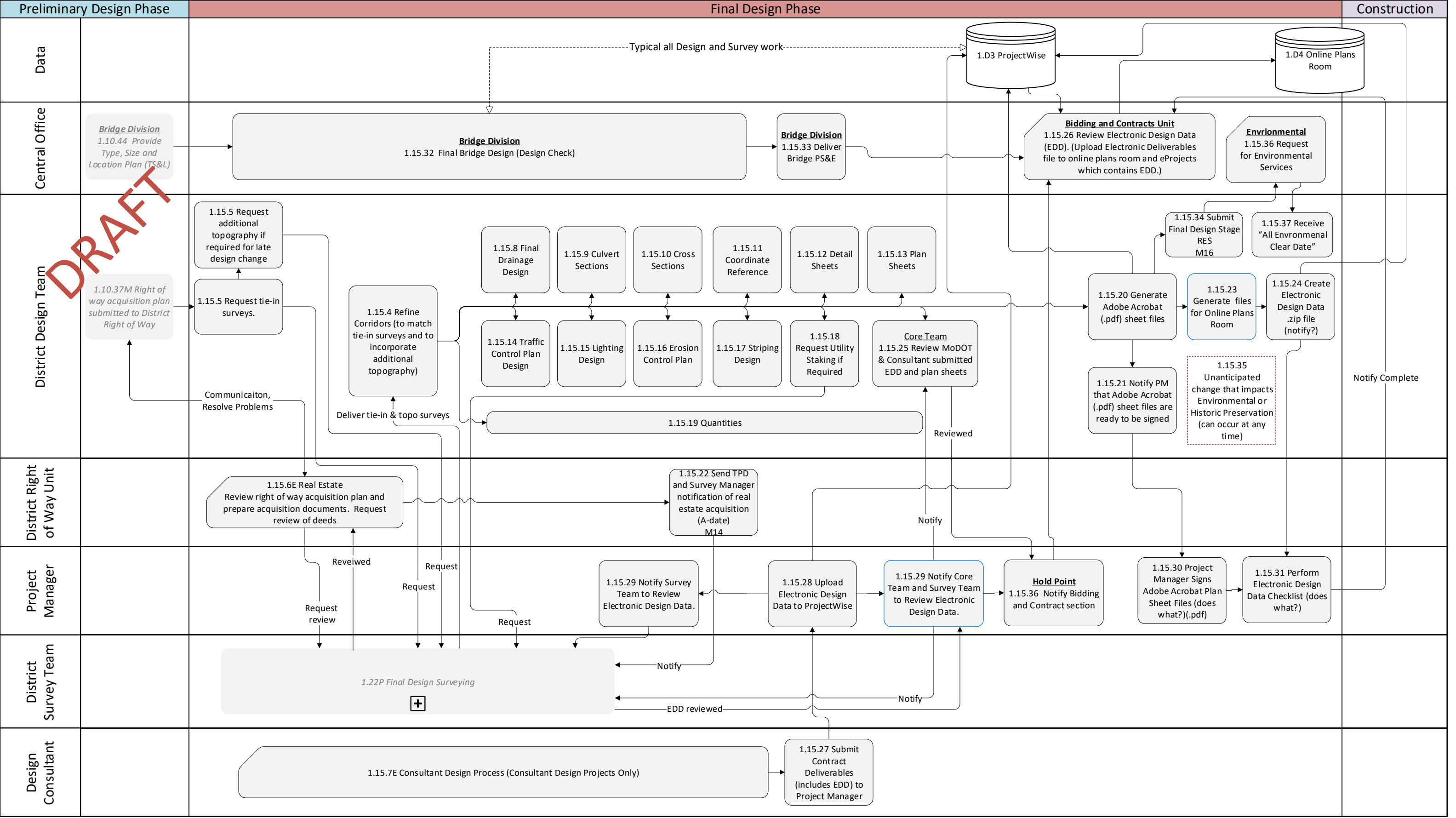
Bridge Division



District Design Team

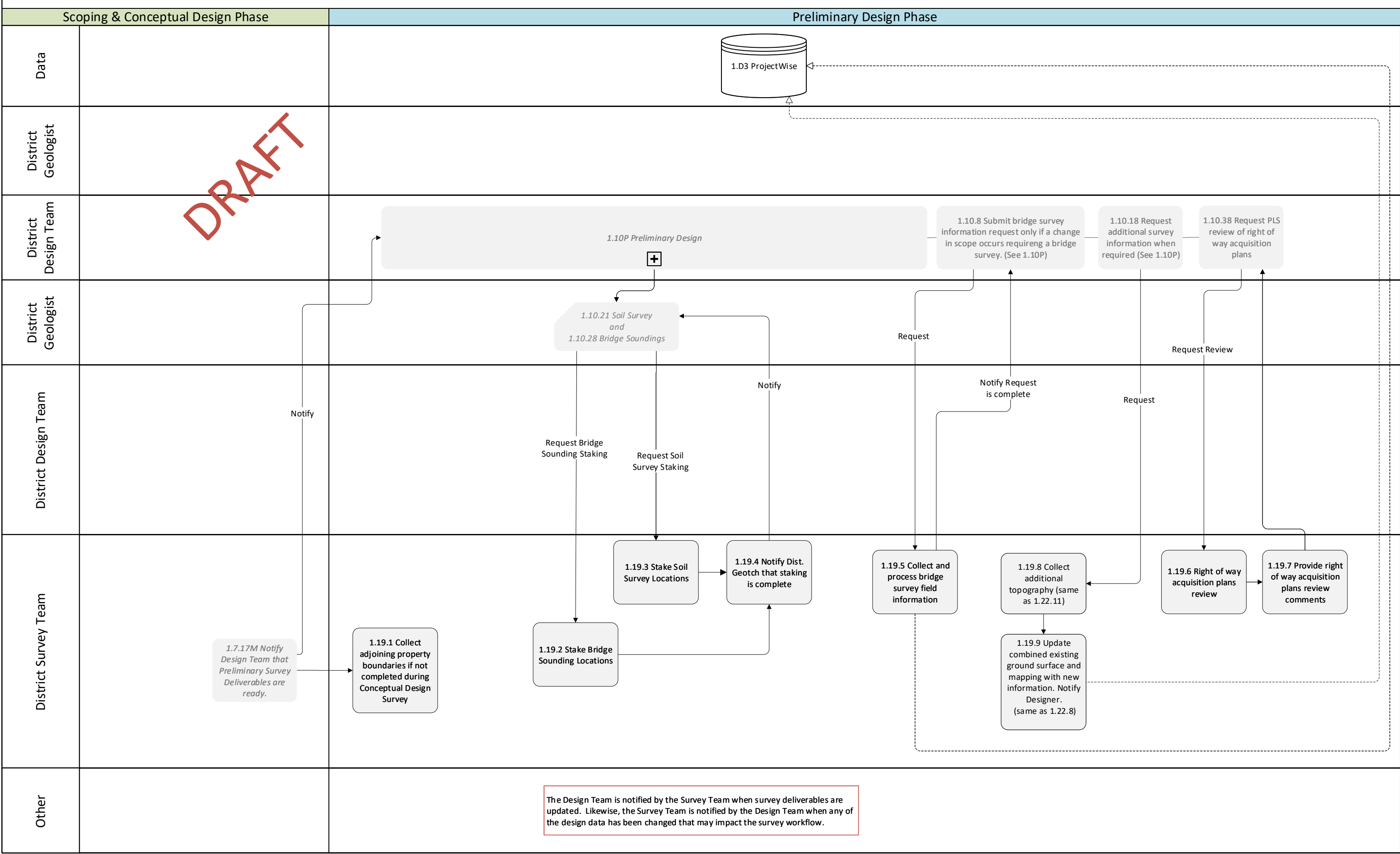


1.15 Final Design Process

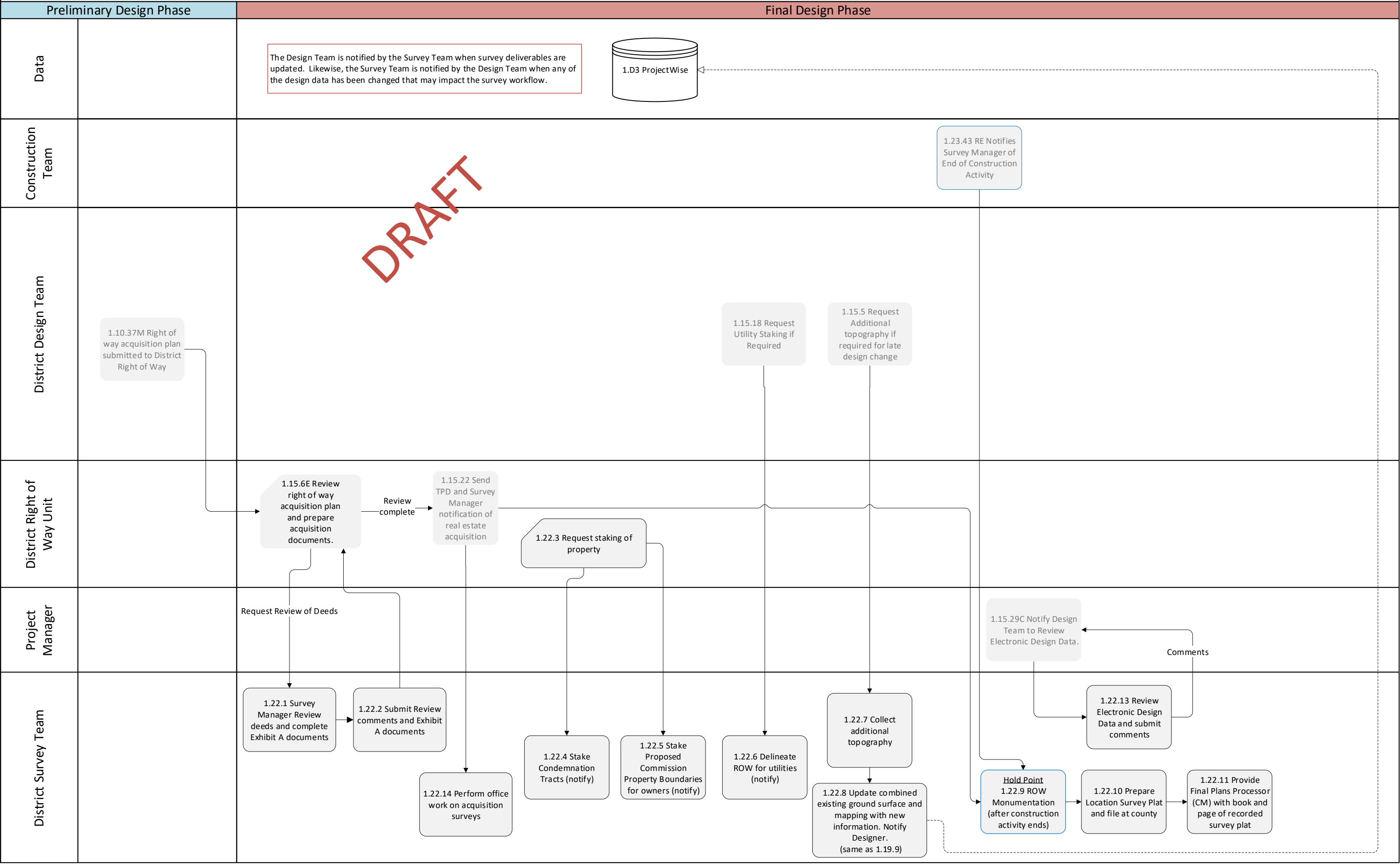


The Design Team is notified by the Survey Team when survey deliverables are updated. Likewise, the Survey Team is notified by the Design Team when any of the design data has been changed that may impact the survey workflow.

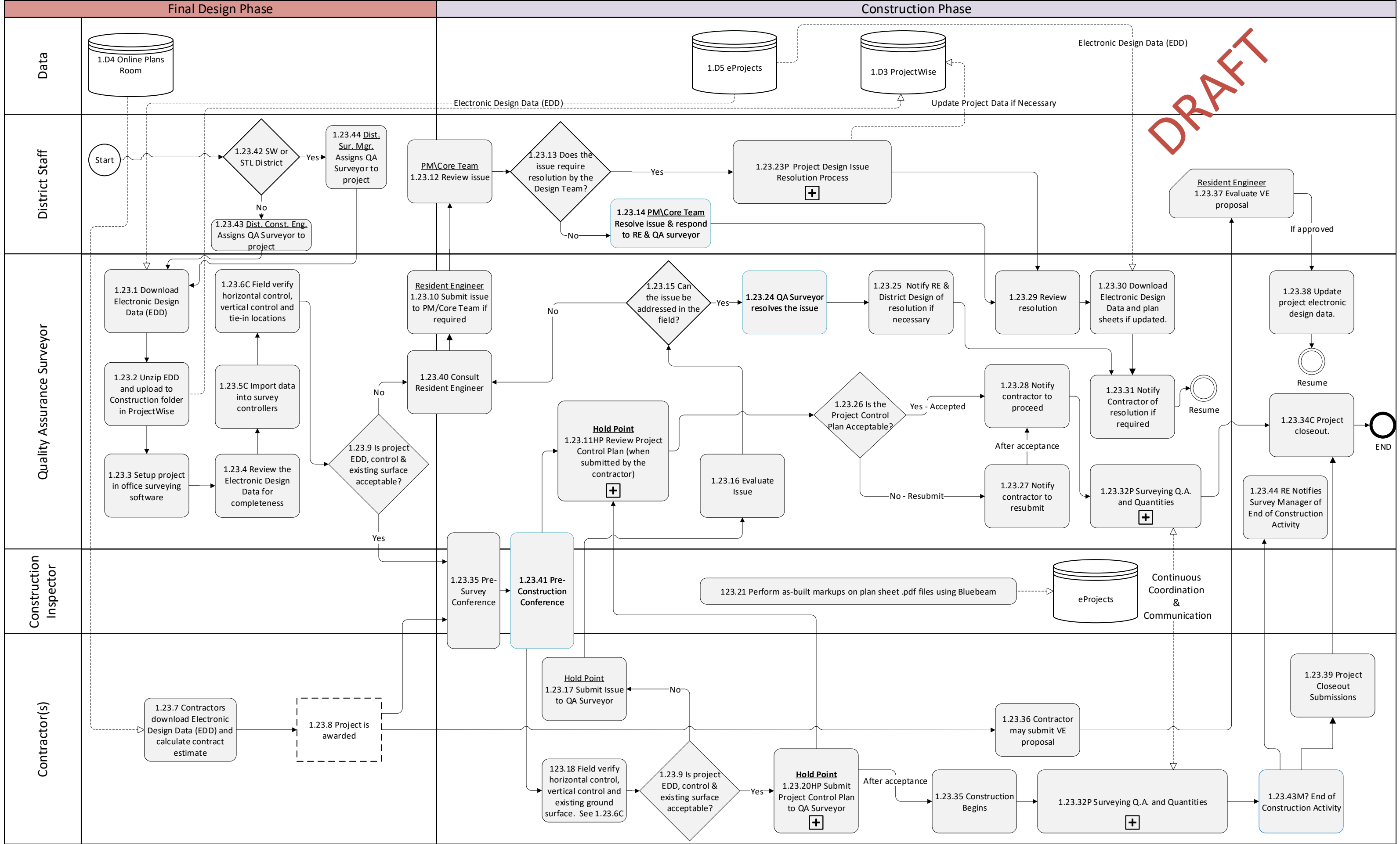
1.19 Preliminary Design Surveying Process

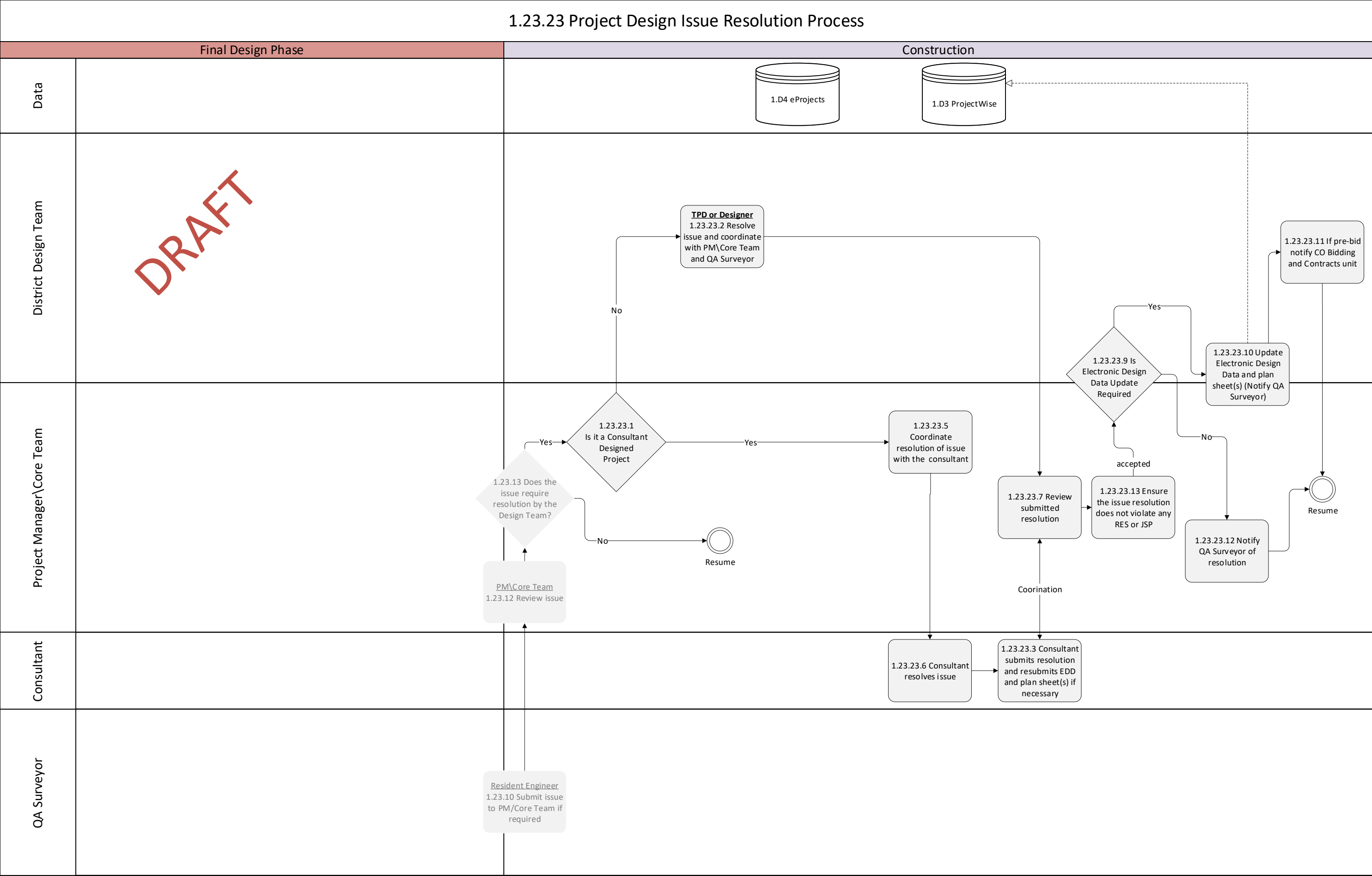


1.22 Final Design Surveying Process



1.23 Construction Process





1.23.32 Surveying Quality Assurance and Quantities Process

Construction Phase	
--------------------	--

