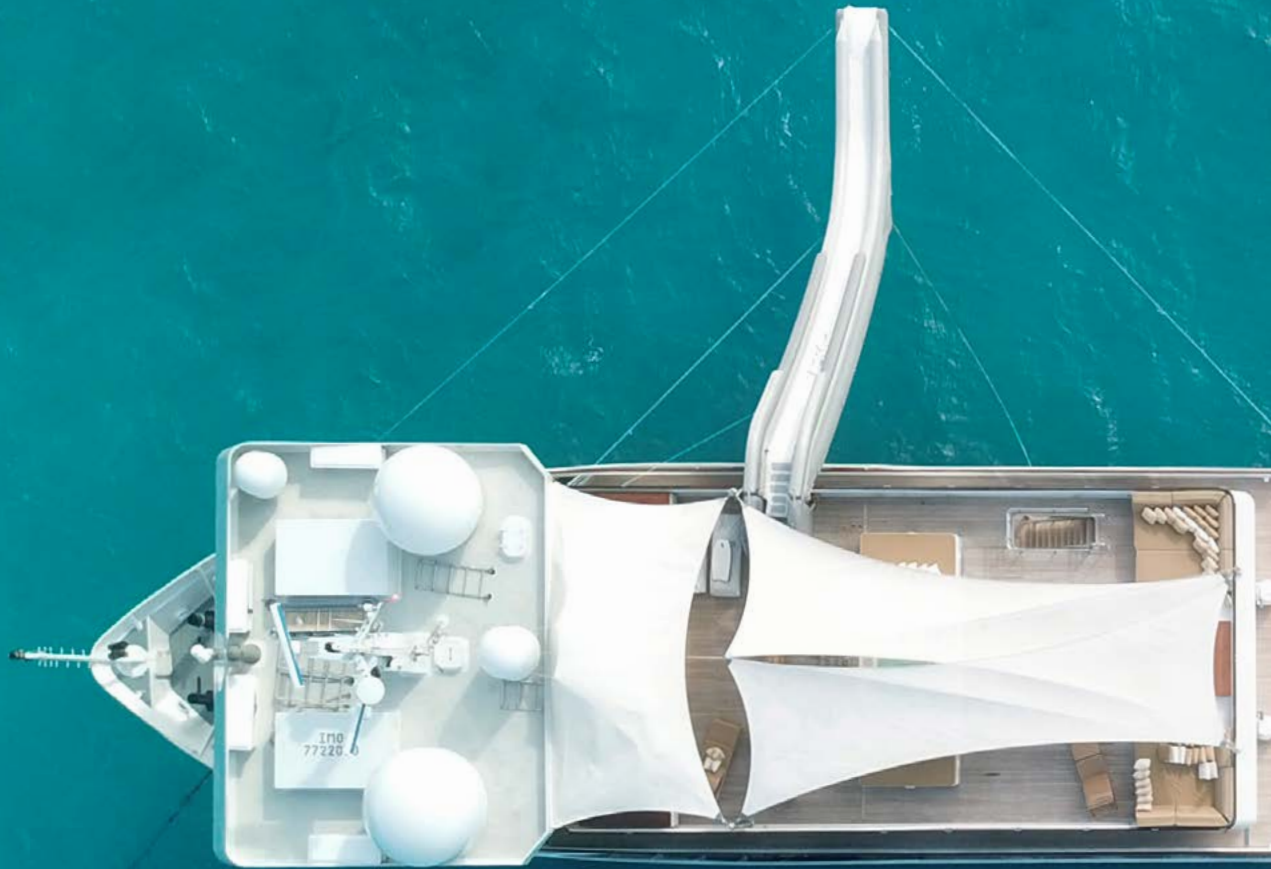




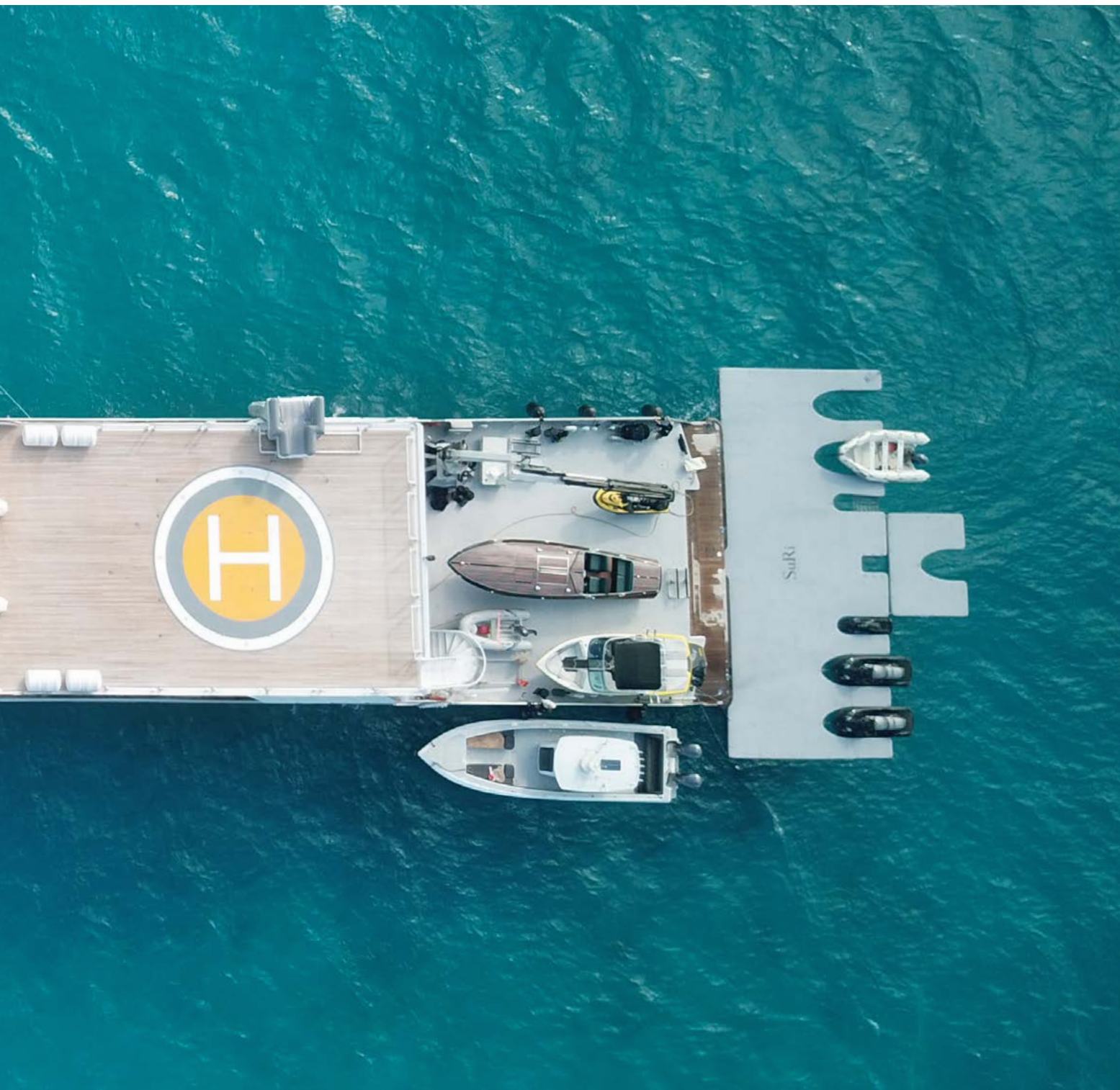
SuRi

World's Most Adventurous Charter Yacht



“

SuRi's mission is to make the impossible, possible. Our only question is when can we make your dream charter vacation a reality?



Welcome

Where luxury abounds and dream adventures beckon. As one of the very few purpose-built luxury yachts in the world, SuRi combines endless comfort with limitless adventure.

From white sandy beaches and vibrant reefs to lush green rainforests and ancient caves, let SuRi take you to some of the world's most beautiful places on an adventure you've only dreamed about.

No other luxury charter vessel has the collection of toys and tenders that SuRi has, enabling her to transform any destination – land, air, or sea – into unbridled once-in-a-lifetime experiences.



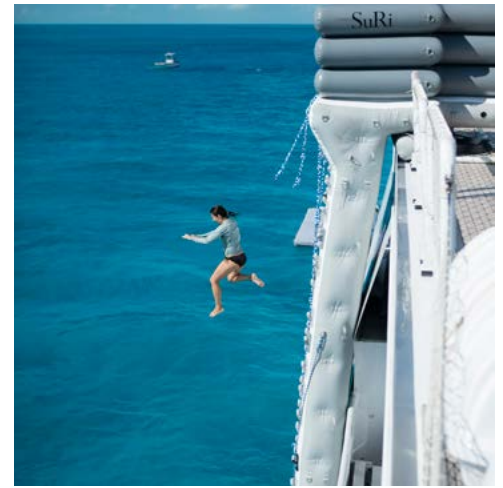




SuRi Experience

With endless luxury both on board and off, and access to some of the world's most beautiful and untouched destinations, SuRi truly delivers a charter yacht experience like no other.

Whether you're scuba diving among exotic reefs, taking flight in the seaplane, or cruising across the water in the StanCraft Wooden Speedster, SuRi will feed your adventurous side in every way possible.





“

Soar over bright blue oceans, lush tropical islands and sandy atolls.



Why Charter SuRi?

As one of the few purpose built luxury adventure yachts, SuRi stands out in a sea of white boats by focusing on delivering once-in-a-lifetime bucket list experiences in exotic far flung locations that other yachts simply can't match. Boasting an unrivalled selection of tenders & toys for her size as well as luxurious amenities, SuRi offers everything you could possibly desire on your unforgettable luxury adventure charter vacation.

From braving treacherous seas as a crabber on the popular television show, *Deadliest Catch*, to sailing the South Pacific, SuRi has certainly led an adventurous life. After undergoing over five years of conversions, refits, and a major hull extension, which involved cutting her in two, adding a 36-foot mid-section, then joining her back together, SuRi finally revealed her new 208-foot profile and became the ultimate luxury adventure yacht she is today.







Sun Deck

Surround yourself in beautiful spaces, inside and out. SuRi's spacious sun deck is the perfect place to relax and enjoy the sunshine boasting an array of sleek yet comfortable lounging spaces, ideal for both entertaining and unwinding from the day's activities.

Dine al fresco or work on your tan as you soak up the sun on the expansive collection of sun lounges, or zen out beneath the shade of crisp fabric canopies.











Bridge Deck

Comprised of a multi-purpose open aft deck and several lounge spaces, the bridge deck is designed as a blissful retreat to unwind after a lively day of exploring. Sit back, breathe in the fresh ocean air, and let the relaxing ambiance of our light-filled and elegant lounges wash over you. Enjoy refreshing cocktails, an enticing movie, or a good read among plush furnishings, rich wooden features, and earthy tones, perfectly complimenting the blue waters and golden sunsets outside.











Owner's Deck

Expansive and contemporary, the owner's deck is a private oasis boasting 5 sumptuous staterooms including four VIP suites, and a full beam master suite with private lounge and office. Each of the staterooms feature large, unobstructed views along with full ensuite bathrooms.





“

Unwind in the sanctuary of your deluxe private room and ensuite, boasting plush furnishings and unobstructed views.

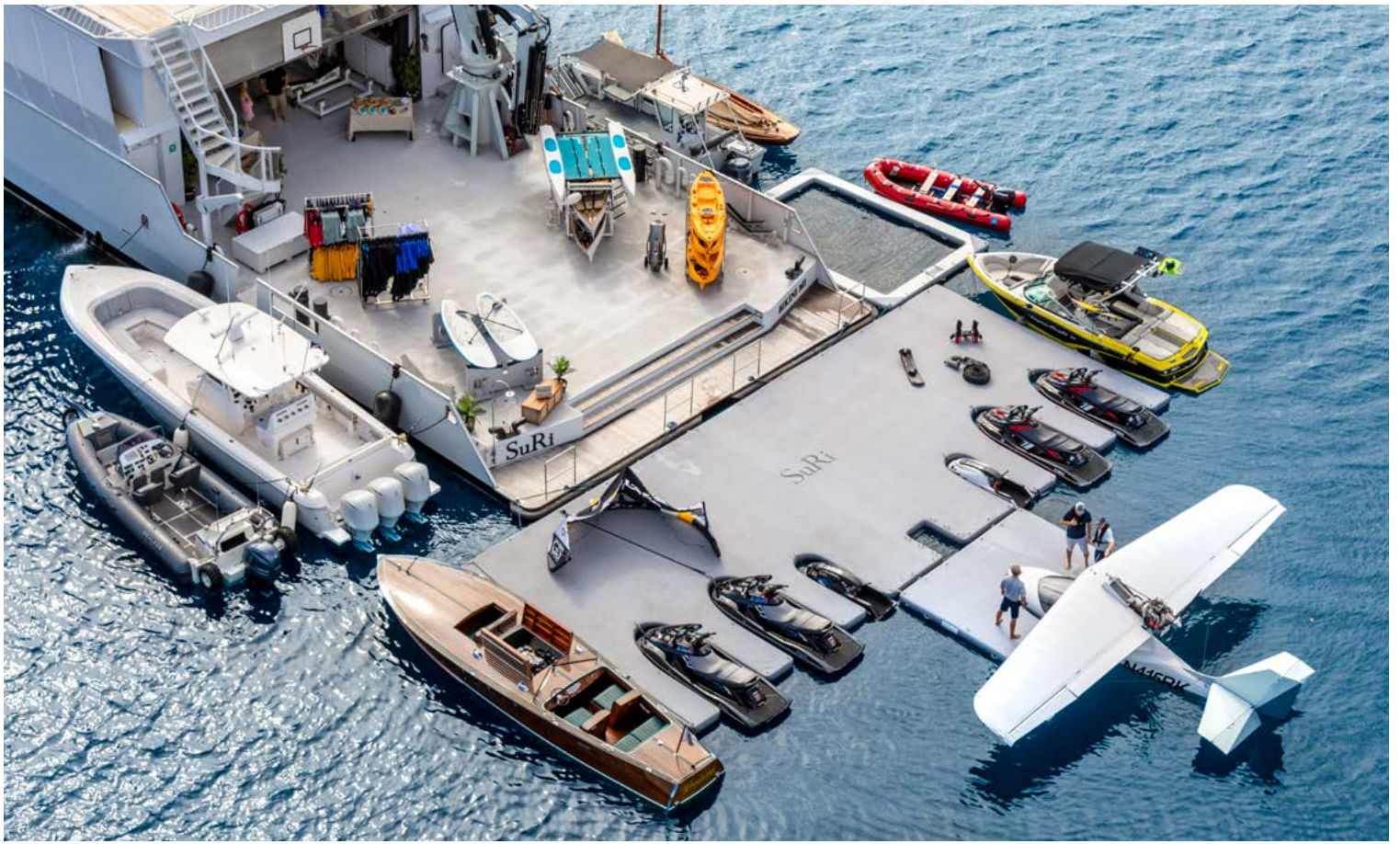






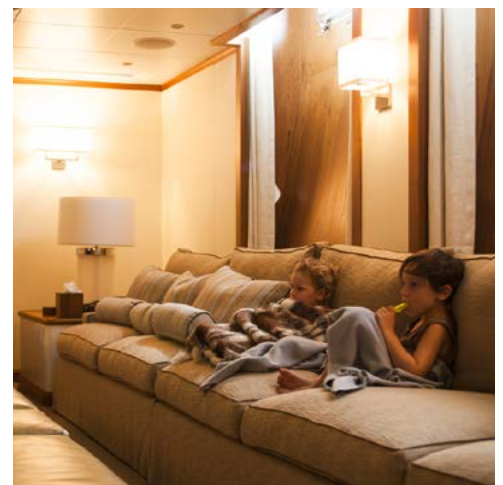
Hangar Deck

Explore SuRi's gigantic toy box, where you'll find a vast array of water and land equipment, sea craft, and aircraft available for your adventure experiences.

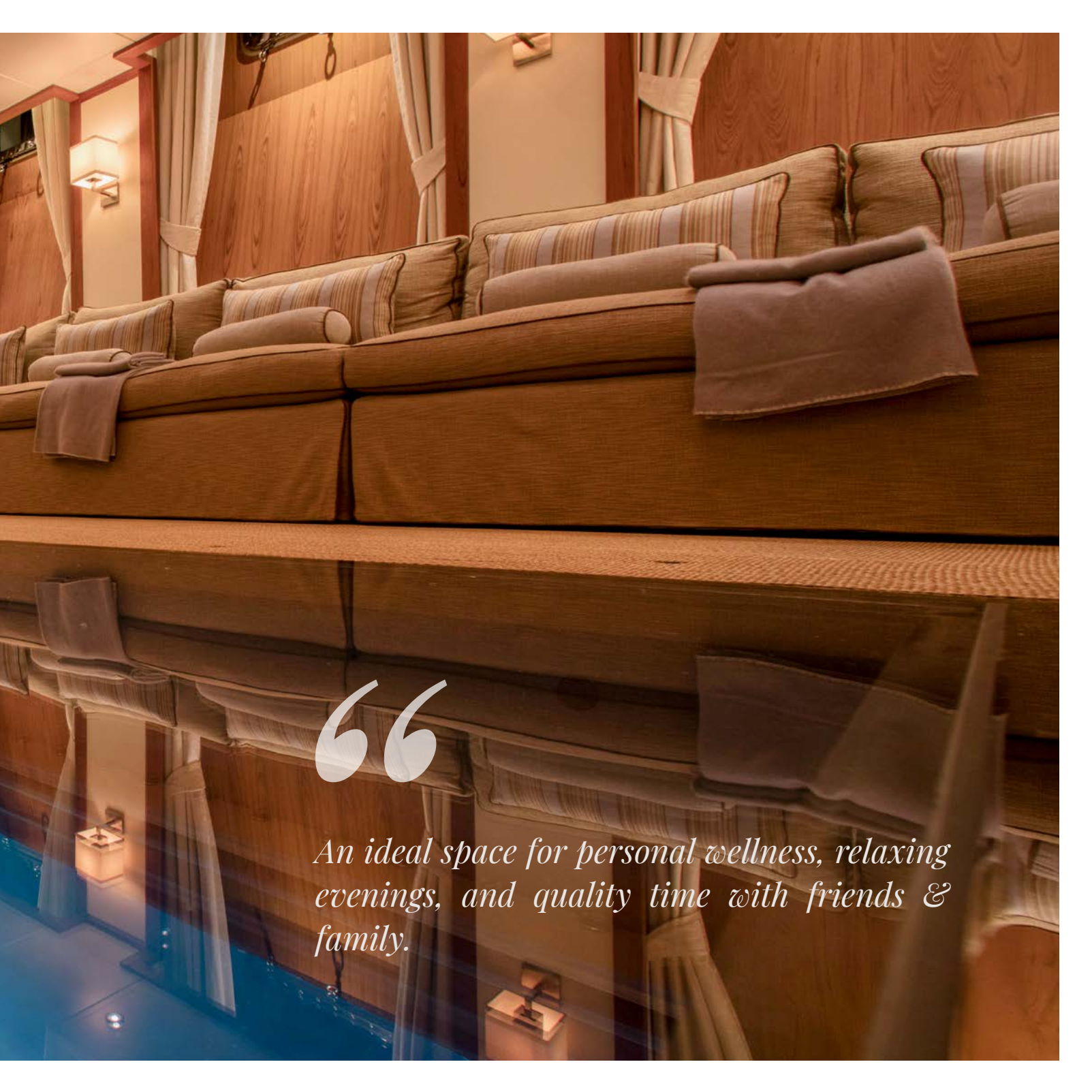


Lower Deck

The lower deck is SuRi's center of entertainment and wellness featuring a large media room with its spectacular 'Windows to the Sea', fitness center, yoga studio, private massage room, and two staterooms.





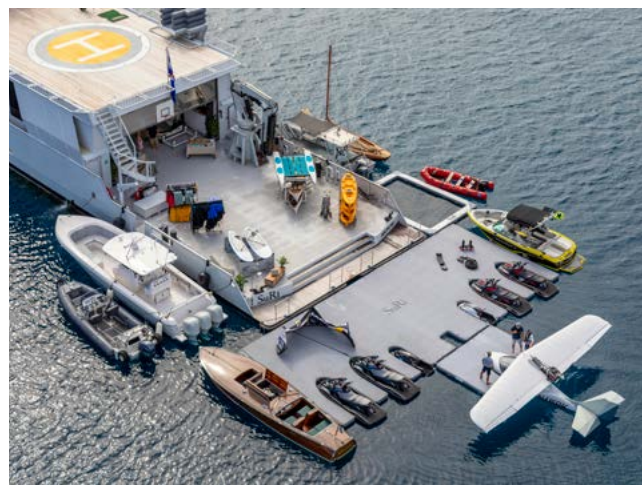


“

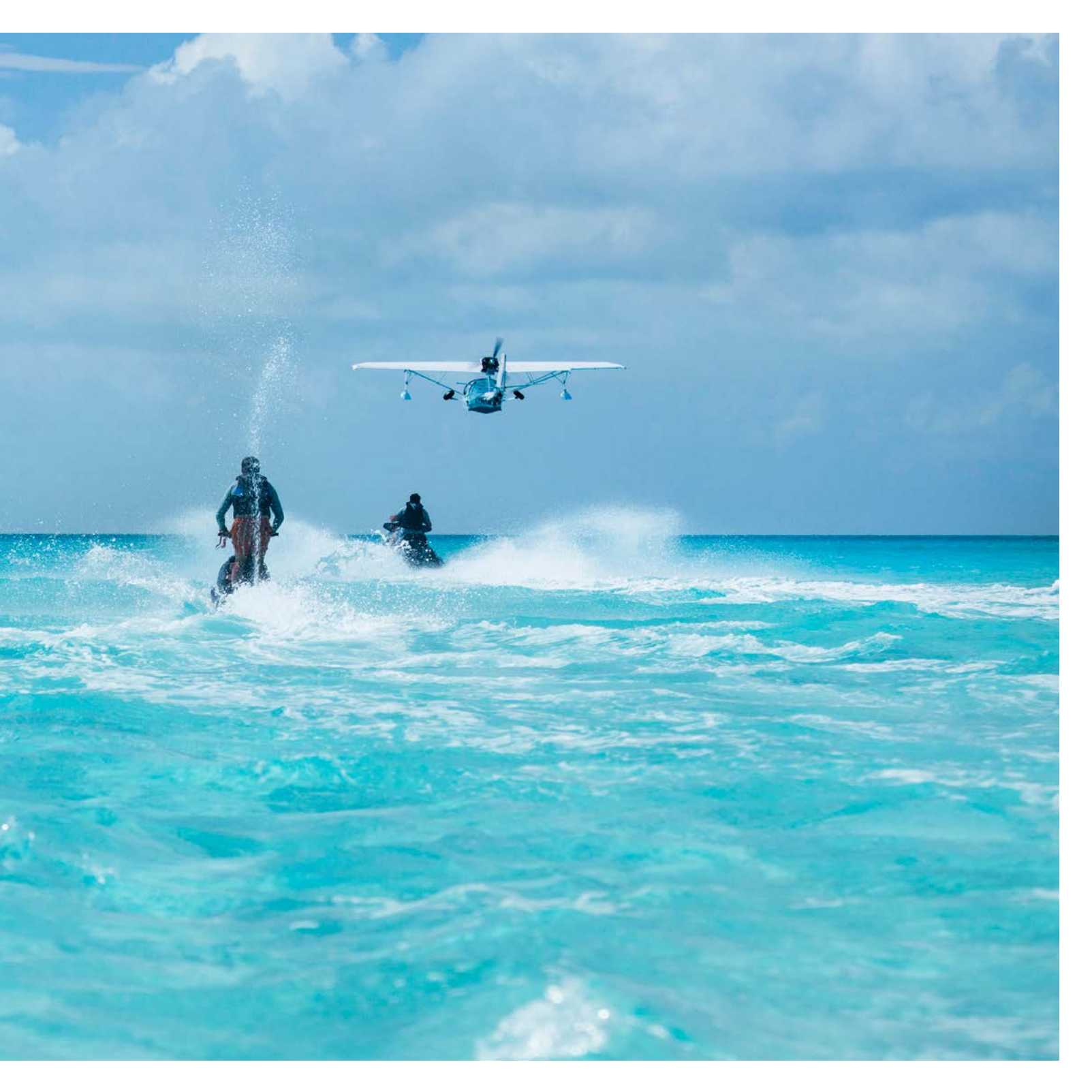
An ideal space for personal wellness, relaxing evenings, and quality time with friends & family.

Watersports Equipment

1 x Mastercraft X10 Wakeboarding and Watersport Speedboat
Variety of Kneeboards, Wakeboards, & Surfboards
Adult & Child Connelly Water Skis
1 x Zapata Fly Board with a Variety of Boots to Fit All Sizes
1 x Zapata Hover Board with Variety of Boot Sizes
4 x Yamaha FX High Performance Jet Skis
2 x Yamaha Superjet Race Performance Stand Up Jet Ski
2 x Seabob Underwater Scooters
Freestyle Cruiser Inflatable Water Slide - 11 meter
Inflatable Rock Climbing Wall
Inflatable Swimming Pool
Inflatable Stern Platform for Water Sports Equipment
Scuba Diving and Snorkelling Gear
2 x Single Kayaks
2 x Double Kayaks
Hobie Cat - 4 Person
Heritage Single Rowing Boat
Heritage Double Rowing Boat
4 x Paddle Boards
6 x Surfboards - Ranging from 5' to 8'
SeaDoo Towable Inflatable - 3 Person
Super Mable Inflatable - 3 Person
O'Brien Inflatable - 2 Person
Yellow Banana Boat - 4 person
Fishing Gear for Trawling / Jigging
Variety of Big Game Fishing Gear











Speedboat & Tenders

StanCraft Wooden Speedster - 30 feet (9.1m) with 600hp inboard engine. This 1997 deluxe vintage boat has been completely refurbished with Mahogany wood and plush seating so you and up to 5 guests can enjoy comfort and style while out on the water.

Intrepid Center Console - 37 feet (11.3m) with 3 x 300hp Yamaha 4-stroke outboards. Optioned with side dive door and fully rigged for big game fishing, it is the ideal tender for diving and fishing excursions reaching speeds up to 45 knots.

Munson Packman Landing Craft - 23 feet (7m) with 2x 200hp 4-stroke outboards. When heading to shore for a bike ride, day trip, or beach dining, This multi-functional tender will transport you and all your gear right on to the beach.

Mastercraft X10 Wakeboarding Speedboat - 21 feet (6.4m) with an IImor MV-8 5.2 liter engine. The newest addition to the SuRi fleet of toys boasts a seating area for up to 14 people and creates the ultimate conditions for wakeboarding and other water sports.

Amphibious Sealegs RIB - 25 feet (7.7m) with Yamaha 200hp outboard engine. It is the ultimate adventure watercraft. Able to effortlessly transfer from water to land in an instant. With seating for up to 8 people, a payload of 700kg, and enough power to reach 40 knots and tow a water skier.

Gem Class Gaff Rig - Classic 23 foot (7m) Daysailer designed by Herbert Krumm-Gartner. This cruising yacht's classic wooden construction and craftsmanship retains the feel of a traditional Gaff-rigged Yacht with the luxury of modern features.



Aviation Equipment

A-Star AS350 Helicopter - The perfect choice for scenic flights and capturing envy inspiring photography. Seating for 4 passengers plus the pilot, the helicopter boasts a spacious and comfortable ride with wide panoramic windows allowing for unobstructed views of the magnificent scenery.

SeaRey Seaplane - The amphibious 2-person SeaRey Seaplane is your ultimate adventure partner; ready to take you well off the beaten path. With the ability to take off from the water in under 400 feet, and touch down on land or sea, the SeaRey can take you on your own personal island-hopping seaplane tour, discovering remote islands and hidden tropical sanctuaries.







Land Equipment

Beach Set-up - When you're ready to hit solid ground and feel the sand between your toes, SuRi comes prepared with everything you need for an on-land expedition. A comprehensive beach set-up package, including a large beach tent for 12 people, Weber BBQ, and catering ashore, brings on-board comfort and luxuries to the shore so you can enjoy the perfect beach day.

Cannondale Hybrid Bicycles - With 3 Cannondale road bikes, you can discover each new destination on two wheels. Built for big miles, both on-road and off-road, you'll be able to venture far and wide, and never be worried about taking the road less travelled. Lightweight, perfectly balanced, and precision handling, these award-winning bicycles offer a smooth and comfortable ride for cyclists of all abilities.



Health & Wellness

Whether you want to work up a sweat in the fitness centre, find your Zen in the yoga studio, or let our onboard masseuse knead all your worries away, SuRi has everything you need to feel good, inside and out.

- Keiser Performance Trainer is a compact & versatile equipment
- Single-column, wall mounted high-low pulley system
- Power-Plate my5 Vibration Training Machine
- Life Fitness 9500HR Treadmill
- Precor Elliptical Trainer
- Nautilus SelectTech Dumbbells
- Stott Pilates SPX Max plus Reformer Bundle
- TRX Suspension Training Kit 2016



Taste & Service

From sun-drenched brunch on the sundeck, to cocktails and canapés in the glass enclosed lounge, to an elegant evening banquet, our onboard chefs create the finest cuisine, masterfully prepared for your indulgence.







Specifications

Size & Range

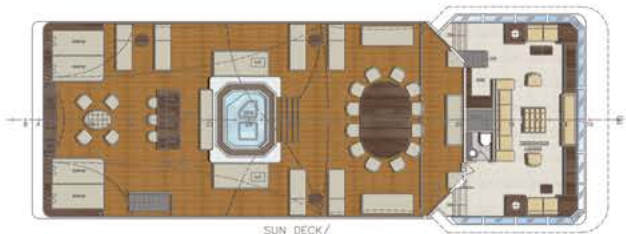
Length Overall	208' 0"
Beam	38' 0"
Draft Max	11' 0"
Draft Min	8'
Gross Tonnage	1352 GRT
Displacement	750 tons
Ballast	79,643 gallons
Fuel Capacity	63,733 gallons
Cruise Speed	11 knots
Range	9,900 NM @ 11 knots
Max Speed	13 knots

Propulsion & Power

Main Engines:	2 x CAT 3508C 820kW each
Generator:	2 x CAT C6.6 @ 125kW each 1 X 85 kW (Emergency Gen)
Water Maker:	2000 gpd Village 3 x village marine
Trans:	Twin Disc MG 540
Bow Thruster:	GM DD 8V71 (300 hp)

Accommodation

Number of cabins:	7
Bed configuration:	6 King, 1 Queen, 4 Single
Number of guests:	12



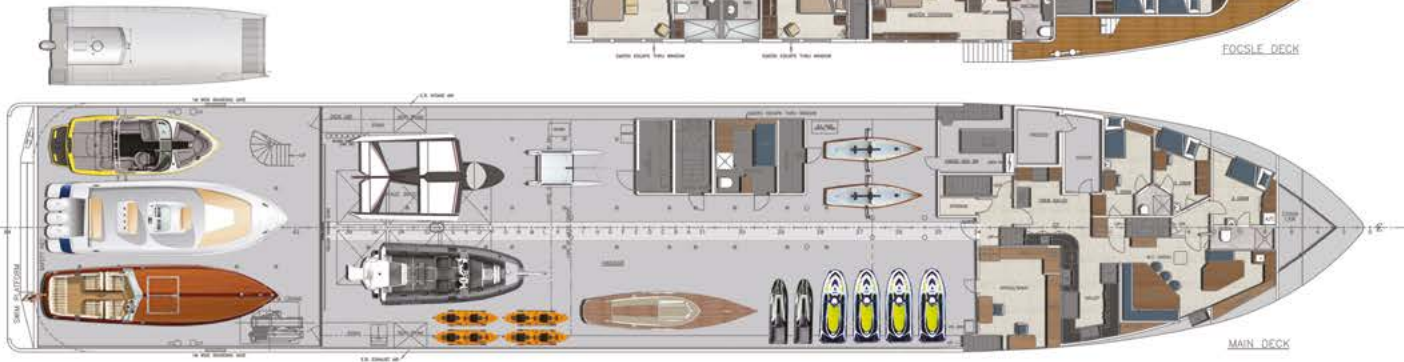
SUN_DECK/
OBSERVATION LOUNGE



BRIDGE DECK



FOOCSLE DECK



MAIN DECK



HOLD DECK

Watersports Equipment

Mastercraft X10 Wakeboarding and Watersport Speedboat
Variety of Kneeboards, Wakeboards, & Surfboards
Adult & Child Connelly Water Skis
1 x Zapata Fly Board with a Variety of Boots to Fit All Sizes
1 x Zapata Hover Board with Variety of Boot Sizes
4 x Yamaha FX High Performance Jet Skis
2 x Yamaha Superjet Race Performance Stand Up Jet Ski
2 x Seabob Underwater Scooters
Freestyle Cruiser Inflatable Water Slide - 11 meter
Inflatable Rock Climbing Wall
Inflatable Swimming Pool
Inflatable Stern Platform for Water Sports Equipment
Scuba Diving and Snorkelling Gear
2 x Single Kayaks
2 x Double Kayaks
Hobie Cat - 4 Person
Heritage Single Rowing Boat
Heritage Double Rowing Boat
4 x Paddle Boards
6 x Surfboards - Ranging from 5' to 8'
SeaDoo Towable Inflatable - 3 Person
Super Mable Inflatable - 3 Person
O'Brien Inflatable - 2 Person
Yellow Banana Boat - 4 person
Fishing Gear for Trawling / Jigging
Variety of Big Game Fishing Gear

Speedboat & Tenders

StanCraft Wooden Speedster
Intrepid Center Console
Mastercraft X10 Wakeboarding and Watersport Speedboat
Munson Packman Landing Craft
Amphibious Sealegs RIB
Gem Class Gaff Rig

Aviation Equipment

Conditions Apply On Use

A-Star AS350 Squirrel Helicopter
SeaRey Seaplane - 2 Person

Land Equipment

Cannondale Hybrid Bicycles - 3 Cannondale Road Bikes
Beach Set-up - Beach Tent for 12 guests with Ample Space, Weber BBQ, & Catering Ashore

Fitness Equipment

Keiser Performance Trainer
Power-Plate my5 Vibration Training Machine
Life Fitness 9500HR Treadmill
Precor Elliptical Trainer
Nautilus SelectTech Dumbbells
Stott Pilates SPX Max plus Reformer Bundle
TRX Suspension Training Kit - 2016



SuRi

Fulfilling your adventure charter dreams!

www.mysuri.com