



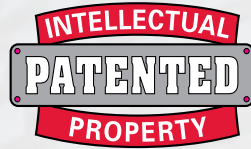
THE FREVOLUTION®



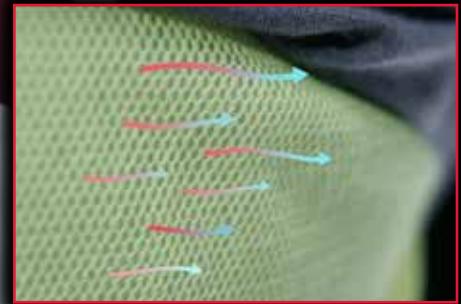
MCR SAFETY

WE PROTECT PEOPLE

World's Safest FR Clothing Powered by Summit Breeze®



Patented Triple Vent Design Reduces Heat Stress



Proprietary 5.5oz inherent blend FR ripstop design

Zero 3rd degree burns!

FR mesh vent maximizes airflow ensuring workers stay cool

Only MCR Safety FR clothing, powered by Summit Breeze® technology, directs a majority of gas away from the face, significantly minimizing inhalation injury.



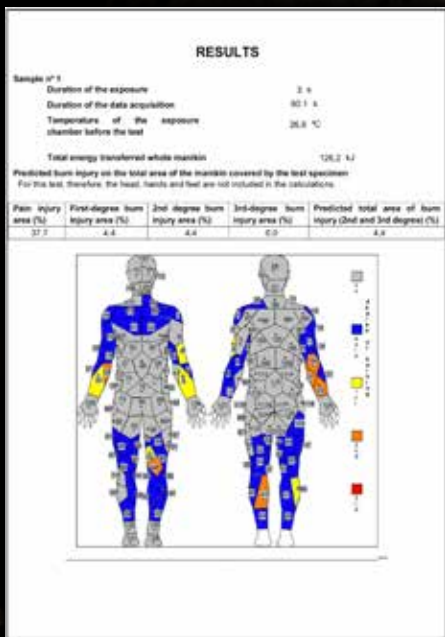
Elite Level Burn Performance

ASTM F1930 Test Data
***Less Than 8% Body Burn**
***0% 3rd Degree Body Burn**



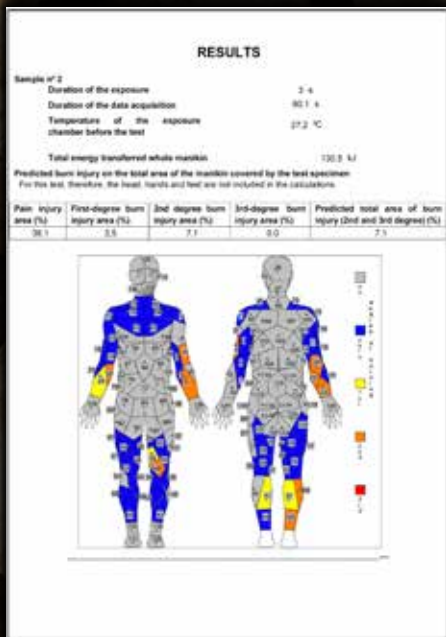
Tested Independently at Aitex
5.5oz Inherent FR Blend Overall
Powered by Summit Breeze®

Total Energy 126.2 kJ
4.4% 2nd Degree Body Burn



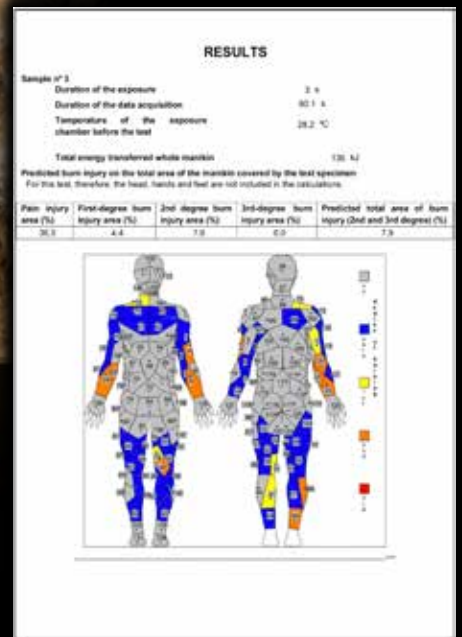
0% 3rd Degree Body Burn

Total Energy 130.5 kJ
7.1% 2nd Degree Body Burn



0% 3rd Degree Body Burn

Total Energy 136 kJ
7.9% 2nd Degree Body Burn



0% 3rd Degree Body Burn

Dual Rated
NFPA 70E CAT 2 & NFPA 2112



Powerful Performance
Priceless Protection
Peace of Mind

OEKO-TEX®
INSPIRING CONFIDENCE
FREE OF FORMALDEHYDE

SBS1001

Gray Color

SBS1002

Navy Blue Color

SBS1003

Tan Color

SBS1006

Medium Blue Color



Summit Breeze® 5.5oz FR Shirts

**5.5oz FR Ripstop
Inherent Blend**



EXTREME MOISTURE WICKING
AND ANTI-STATIC PROPERTIES
TWICE THE DURABILITY OF
COTTON

CAT 2 ATPV 8.9 cal/cm²



**Patented
Triple Vent
Technology**



IMPROVES AIR FLOW
REDUCES BODY BURN
UP TO 50%*

Front Pen Pocket



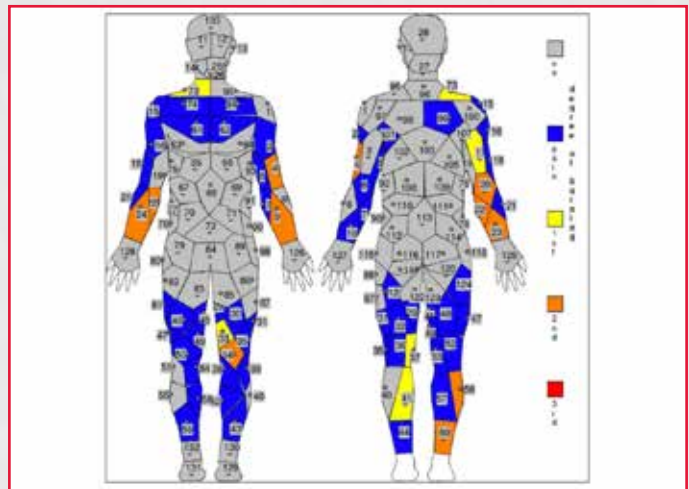
- 5.5oz FR Inherent Blend Material
- Patented Triple Vent Technology
- Nomex® double stitched seams for increased strength
- Button-down collar

POWERED BY

Summit Breeze®

TECHNOLOGY

**ASTM F1930 Tested - Less Than 5% Body
Burn when worn with our P2D FR Jeans!**





SBS2001

Gray Color

SBS2002

Navy Blue Color

SBS2003

Tan Color

SBS2006

Medium Blue Color



Summit Breeze® 7oz FR Shirts

7oz FR 100% Cotton Material



DOUBLE NEEDLE STITCHED WITH NOMEX® THREAD IN HIGH WEAR AREAS FOR DURABILITY

Patented Triple Vent Technology



IMPROVES AIR FLOW REDUCES BODY BURN UP TO 50%*

- 7oz FR 100% Cotton Material
- Patented Triple Vent Technology
- Nomex® double stitched seams for increased strength
- Button-Down Collar
- Two chest pockets with flap and button closures
- Adjustable two button closure on each sleeve cuff

POWERED BY

Summit Breeze®
TECHNOLOGY

CAT 2 ATPV 8.7 cal/cm²



Front Pen Pocket



SIG
Gray Color

SIN
Navy Blue Color

SIT
Tan Color



88/12 FR Work Shirts

Max Comfort™ 6.5oz FR
88% Cotton/12% Nylon
Sateen Fabric

Front Pen Pocket



- 6.5oz FR Max Comfort™ 88% cotton/12% nylon sateen fabric
- Nomex® double stitched seams on major seams for increased strength
- Extended back tail to stay tucked in

CAT 2 ATPV 9.5 cal/cm²

Button Down Collar





LSTIG
Gray Color

LSTIN
Navy Blue Color

LSTIT
Tan Color



FR Long Sleeve Shirts

**6.5oz FR
100% Cotton Fabric**



Left Chest Pocket



- 6.5oz FR 100% cotton fabric
- 1 outer left chest pocket
- Extremely comfortable for all day use

POWERED BY
Summit Breeze®
TECHNOLOGY

CAT 2 ATPV 10.6 cal/cm²



Rib-Knit Crewneck Collar



HIG
Gray Color

HIN
Navy Blue Color

HIT
Tan Color



FR Henley Long Sleeve Shirts

7oz FR Max Comfort™ 100% Cotton Interlock Knit Shell



Left Chest Pocket



- 7oz FR Max Comfort™ 100% Cotton interlock knit shell
- 3 button placket front
- Left chest pocket
- Fabric is moisture wicking and breathable
- Rib knit collar and cuff
- Hi-temperature FR poly button

CAT 2 ATPV 9.6 cal/cm²



3 Button Placket Front





SS1N

Navy Blue Color

SS2BK

Black Color



FR Hoodies

- 12oz FR Max Comfort™ 100% Cotton interlock fleece shell
- Attached 3-section hood with FR cord
- Sewn with Flame Resistant thread
- Zipper front closure

- 12oz FR Max Comfort™ 100% Cotton interlock fleece shell
- Attached 3-section hood with FR cord
- Pullover Style
- One front pouch pocket
- Ribbed Cuff

FR 100% Max Comfort Cotton Interlock Fleece



CAT 2 ATPV 18 cal/cm²



PID
Blue Denim Color



Legacy FR Denim

- 13oz FR Max Comfort™ 100% Cotton Denim
- Enzyme wash for softness, comfort, and a great look
- Reinforced belt loops
- Three sided coin pocket
- Double needle stitched with Aramid thread in high wear areas
- 8" single needle topstitch at top of out seam for durability
- All stress points bar tacked for extended wear
- Two large patch pockets on seat

**13oz FR Max Comfort™
Heavy Weight Indigo Denim**



Three Sided Coin Pocket



**Two Large Patch Pockets
on Seat**



CAT 2 ATPV 20.0 cal/cm²





P2D
Blue Denim Color



Stretch Comfort FR Denim

- 10.5oz FR 98% Cotton 2% Spandex Fabric
- Oeko-Tex Standard 100
- Third party certified by UL
- Double needle stitched with Aramid thread in high wear areas
- Zipper front with button top
- 5 pockets
- Comfortable lightweight and stretchable blend
- Designer style

**10.5oz FR
98% Cotton
2% Spandex Fabric**



Zipper Front with Button Top



5 Pockets



CAT 2 ATPV 13 cal/cm²



PT2N

Navy Blue Color

PT2T

Tan Color



88/12 FR Work Pants

- 7oz Premium 88/12 blend
- Total of 6 pockets
- NFPA 2112 and NFPA 70E
- CAT 2 ATPV 8.6 cal/cm²
- Double Stitched for durability and wear
- Pleated knees, added material for ease of bending
- CAT 2 and NFPA labels sewn onto pants

**7oz Premium
88/12 blend**



Side Utility Pocket



Utility Pocket



CAT 2 ATPV 8.6 cal/cm²





SBC1011

Gray Color



SBC1012

Navy Blue Color



ASTM F1930 Test Data
***Less Than 8% Body Burn**
***0% 3rd Degree Body Burn**



OEKO-TEX®
INSPIRING CONFIDENCE
FREE OF
FORMALDEHYDE

5.5oz FR Ripstop Inherent Blend

5.5oz FR Ripstop Inherent Blend



EXTREME MOISTURE WICKING AND ANTI-STATIC PROPERTIES TWICE THE DURABILITY OF COTTON

Patented Ventilated Rear Cape with FR Mesh



IMPROVES AIR FLOW REDUCES BODY BURN UPTO 50%*

Patented Ventilated Underarm Vents with FR Mesh



IMPROVES AIR FLOW REDUCES BODY BURN UPTO 50%*

CAT 2 ATPV 8.9 cal/cm²



FR Mesh Gas Monitor Pocket



Tool Pocket



Zippered Chest Pocket



POWERED BY
Summit Breeze®
TECHNOLOGY

SBC2011

Gray Color

SBC2012

Navy Blue Color

SBC2013

Tan Color

SBC2014

Red Color



7oz FR 100% Cotton

7oz FR 100% Cotton Material



DOUBLE NEEDLE STITCHED WITH NOMEX® THREAD IN HIGH WEAR AREAS FOR DURABILITY

Patented Ventilated Rear Cape with FR Mesh



IMPROVES AIR FLOW REDUCES BODY BURN UP TO 50%*

Patented Ventilated Underarm Vents with FR Mesh



IMPROVES AIR FLOW REDUCES BODY BURN UP TO 50%*

CAT 2 ATPV 8.7 cal/cm²



FR Mesh Gas Monitor Pocket



Tool Pocket



Zipped Chest Pocket



POWERED BY
Summit Breeze®
TECHNOLOGY



SBC2031

Gray Color



SBC2035

Royal Blue Color



**FR 3" Contrasting Trim
with 1" Silver Reflective
Core with X pattern on Back**



7oz FR 100% Cotton

**7oz FR 100% Cotton
Material**



DOUBLE NEEDLE STITCHED
WITH NOMEX® THREAD IN HIGH
WEAR AREAS FOR DURABILITY

**Patented Ventilated
Rear Cape with FR Mesh**



IMPROVES AIR FLOW
REDUCES BODY BURN
UP TO 50%*

**Patented Ventilated
Underarm Vents with FR Mesh**



IMPROVES AIR FLOW
REDUCES BODY BURN
UP TO 50%*

CAT 2 ATPV 8.7 cal/cm²



FR Mesh Gas Monitor Pocket



Tool Pocket



Storm Flap



POWERED BY
Summit Breeze®
TECHNOLOGY

DCWUG
Gray Color

DCWUT
Tan Color

DCWURB
Royal Blue Color

DCWURG
Gray Color



7oz FR Westex UltraSoft® Material

**7oz FR Westex
UltraSoft® Material**



DOUBLE NEEDLE STITCHED
WITH NOMEMEX® THREAD IN HIGH
WEAR AREAS FOR DURABILITY

5 Pockets



- Nomex® triple stitched seams for increased strength on major seams for durability
- Heavy duty two-way YKK® brass break-away zipper
- Protective storm flap with snap closure to cover front zipper
- Two chest pockets, left pocket with pen tunnel
- Two front hip pockets on coverall pants
- Side pass through with snap closure
- Two back patch pockets
- Bi-swing action back gussets for ease of movement
- Tool pocket on right leg
- Adjustable snap closure on cuff of sleeves

Zipper Front with Button Top



CAT 2 ATPV 8.7 cal/cm²



WESTEX®
UltraSoft®



CCMG
Gray Color



CCMN
Navy Blue Color



7oz FR 100% Cotton

7oz Max Comfort™
FR 100% Cotton Twill Fabric



TRIPLE NEEDLE STITCHED
WITH NOMEX® THREAD IN HIGH
WEAR AREAS FOR DURABILITY

Adjustable Snap
Closure on Cuff of
Sleeves and Pants



Two Chest Pockets,
Left Pocket with Pen
Tunnel



- Nomex® triple stitched seams for increased strength on major seams
- Heavy duty two-way YKK® brass break-away zipper
- Two chest pockets, left pocket with pen tunnel
- Two front hip pockets on coverall pants
- Side pass through with snap closure
- Two back patch pockets
- Tool pocket on right leg
- Adjustable snap closure on cuff of sleeves

CAT 2 ATPV 8.8 cal/cm²



FRMASKDH I

Gray Color

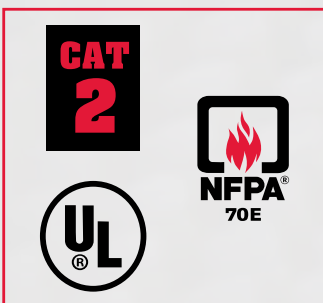


5.5oz FR Westex DH Mask

- 48% Lenzing, 40% Modacrylic, 12% Aramid
- Fabric is 2112 UL certified
- Tested to ASTM 1930
- NFPA 70E certified
- CAT 2 ATPV 6.6 cal/cm²
- Double Layer of Westex DH
- 3 Ply design for better fit around face
- 2 Adjustable tie on loops, better fit for wearer

CAT 2 ATPV 6.6 cal/cm²

5.5oz FR Fabric



 **WESTEX**[®]
DH



BLCVCX
Black Color

BLCVTCN
Navy Blue Color



FR Balaclava



- ATPV 32 cal/cm²
- ASTM F1506 Electric Arc Protection
- ASTM 1959
- Meets hood requirements of NFPA 1971
- Made with CarbonX® Rib Knit FR Material
- Double layered for extra protection and insulation
- Will not melt or burn
- Provides face and neck protection
- Elastic binding around face for a secure fit
- One size fits all



- ATPV 8.9 cal/cm²
- ASTM F1506 Electric Arc Protection
- ASTM 1959
- Made with Westex® TrueComfort® FR Material
- Sewn with FR Nomex® Thread
- Elastic binding around face for a secure fit
- Made in U.S.A.
- One size fits all



CHC1N
Navy Blue Color

CHC1G
Gray Color



FR Summit Freeze® Insulated Chore Coat

7oz twill cotton outer
10oz quilted modacrylic liner



2-way FR zipper front
FR hook/loop tabs storm flap



- 7-ounce twill cotton outer material
- 10-ounce quilted modacrylic liner for warmth and added protection
- CAT 3 ATPV 35 cal/cm²
- ASTM F1506 Electric Arc Protection
- NFPA 2112 and NFPA 70E
- ASTM 1930 Tested, Certified
- 2-way FR zipper front with FR hook and loop tabs on storm flap
- 4 outer pockets - 2 chest pockets and 2 inset hand warmer pockets
- One inner patch pocket
- Inner sleeves add additional protection
- FR Hook and Loop adjustable wrist straps for personal fit
- Double needle stitched with FR Nomex® thread for durability
- Pleated action back provides arms with 360-degree full range of motion
- Adjustable FR Hook and Loop closure on each sleeve cuff

CAT 3 ATPV 35 cal/cm²



One Inner Patch Pocket



POWERED BY
Summit Breeze®
TECHNOLOGY



B4T
Brown Color



BP4T
Brown Color



FR Summit Freeze Insulated Workwear

- 11oz FR 100% FR duck cotton outer
- CAT 3 ATPV 34.8 cal/cm²
- 10oz FR quilted modacrylic liner
- Bi-Swing action back for comfort
- Zipper front covered by storm flap
- Over-sized zipper pull for ease of use with gloves
- No exposed metal
- 2 Insulated hand warmer pockets over flap pockets, 4 total outer pockets
- 1 Inside left pocket
- Elastic bottom for fit and to help keep jacket from riding up

- 12oz FR Max Comfort™ 100% Cotton Canvas Outer Shell
- CAT 3 ATPV 38 cal/cm²
- 11.5oz FR quilted lining – 100% FR treated cotton and non-woven modacrylic batting
- FR Aramid double stitched seams on main seams
- 2 chest pockets with concealed snap closure
- Protective storm flap covers 2-way #10 brass non-separating front zipper
- Heavy weight 2" adjustable elasticized straps with FR heat resistant buckles
- Two rear pockets with concealed snap closures – no flaps
- Vented legs w/10m FR zipper closure, 28". The zipper is protected by storm flaps with snap closures
- Elastic waist
- Hip pockets with snap closure

11oz 100% FR Insulated Summit Freeze®



CAT 3 ATPV 34.8 cal/cm²



B3N

Navy Blue Color

BP3N

Navy Blue Color



FR Max Comfort Insulated Outerwear

- 7.5oz FR Max Comfort™ 88% Cotton/12% Nylon Outer
- 11.5oz FR quilted lining – 100% FR treated cotton and non-woven modacrylic batting
- Water Repellent
- FR Aramid double stitched seams for increased strength
- 2 Inset Hand pockets
- Pleated action back with 360° full range of motion
- FR Brass #10-Nomex® 1-way separating front zipper closure with protective storm flap with snap closure
- Knit cuffs and waistband

- 7.5oz FR Max Comfort™ 88% Cotton/12% Nylon Outer
- 11.5oz FR quilted lining – 100% FR treated cotton and non-woven modacrylic batting
- Water Repellent
- FR Aramid double stitched seams for increased strength
- 2 chest pockets with concealed snap closure
- Protective storm flap covers 2-way #10 brass non-separating front zipper
- Heavy weight 2" adjustable elasticized straps with FR heat resistant buckles
- Two rear pockets with concealed snap closures – no flaps
- Vented legs w/10m FR zipper closure, 28". The zipper is protected by storm flaps with snap closures
- Elastic waist
- Hip pockets with snap closure

**7.5oz FR Max Comfort™
88% Cotton 12% Nylon**

CAT 3 ATPV 35 cal/cm²





SBS 1027
Hi-Vis Lime Color

Class
3



2" 3M™ Scotchlite™
5535 Segmented Flame Resistant Tape
Lighter than traditional industrial FR tape
with great flexibility for a long day's work

Summit Breeze® 5.5oz Class 3 Hi-Vis FR

**5.5oz FR Ripstop
Inherent Blend**



EXTREME MOISTURE WICKING
AND ANTI-STATIC PROPERTIES
TWICE THE DURABILITY OF
COTTON

**Patented Ventilated
Rear Cape With FR Mesh**



IMPROVES AIR FLOW
REDUCES BODY BURN
UP TO 50%*

- 5.5oz FR Inherent Blend Material
- Patented Triple Vent Technology
- Nomex® double stitched seams for increased strength
- Button-down collar

POWERED BY
Summit Breeze®
TECHNOLOGY

CAT 2 ATPV 8.9 cal/cm²



Front Pen Pocket



SICL3L
Hi-Vis Lime Color



**Class
3**



Westex® Ultrasoft® Class 3 FR

**7oz FR Westex
Ultrasoft® Fabric**



Front Pen Pocket



Class 3 Hi-Vis FR Shirt

- 7oz FR Westex Ultrasoft® fabric
- Meets ANSI 107 Type R, Class 3 Hi-Visibility requirements
- Nomex® double stitched seams for increased strength
- Button-Down Collar
- Two chest pockets with flap and button closures
- Adjustable two button closure on each sleeve cuff
- Extended back tail to stay tucked in
- Non-conductive garment

CAT 2 ATPV 8.7 cal/cm²



WESTEX
UltraSoft®





FRMCL2L

Fluorescent Lime Color

FRMCL2ML

Fluorescent Lime Color

FRMCL3ML

Fluorescent Lime Color



FR Modacrylic Safety Vest

Class 2 FR Safety Vest

Sizes M-X4

- FR Solid fabric
- Arc rating 5.4 cal/cm²
- 2" Silver FR Reflective Stripes
- FR Hook and Loop front closure
- D-Ring Access for fall protection harness
- GlenGuard® Hi-Vis material
- 3 pockets

Class 2 FR Safety Vest

Sizes M-X4

- FR Mesh fabric
- Arc Rating 4.6 cal/cm²
- 2" Silver FR Reflective Stripes
- FR Hook and Loop front closure, D-Ring Access for fall protection harness
- GlenGuard® Hi-Vis material
- 3 pockets

Class 3 FR Safety Vest

Sizes S-X4

- FR Mesh fabric
- Arc Rating 4.6 cal/cm²
- 2" Silver FR Reflective Stripes
- FR Hook and Loop front closure
- D-Ring Access for fall protection harness
- GlenGuard® Hi-Vis material
- 3 pockets



FR Modacrylic/Aramid Blend Fabric

CAT 1



BJ238JH

Fluorescent Lime Color



Class 3

BJ238CH

Fluorescent Lime Color



Class 3

BJ238BP

Fluorescent Lime Color



Class E

BJ238PW

Fluorescent Lime Color



Class E



FR Rainwear

FR Jacket

Sizes M-X5

- FR PVC/Meta-Aramid
- Sturdy zipper front with large storm flap
- Cape ventilated back with D-Ring access
- 2" Silver FR reflective stripes
- Two front patch pockets
- Adjustable/attached drawstring hood
- Adjustable hook and loop wrist closures

FR 49" Rain Coat

Sizes M-X5

- FR PVC/Meta-Aramid
- Sturdy zipper front with large snap over flaps
- 2" Silver FR reflective stripes
- Two front patch pockets
- Adjustable/oversized attached hideaway drawstring hood
- Standup collar for added protection
- Adjustable hook and loop wrist closures

FR Bib Pant

Sizes M-X5

- FR PVC/Meta-Aramid
- Easy release FR suspender straps
- Dual Band 2" Silver FR reflective stripes
- Fly Front, adjustable side snaps
- Adjustable hook and loop ankle straps

FR Elastic Waist Pant

Sizes M-X5

- FR PVC/Meta-Aramid
- Dual Band 2" Silver FR reflective stripes
- Adjustable hook and loop ankle straps
- Fly Front

Tested in accordance with ASTM F903 – Standard Test Method for Resistance of Materials used in Protective Clothing to Penetration by Liquids

FR PVC/Meta-Aramid



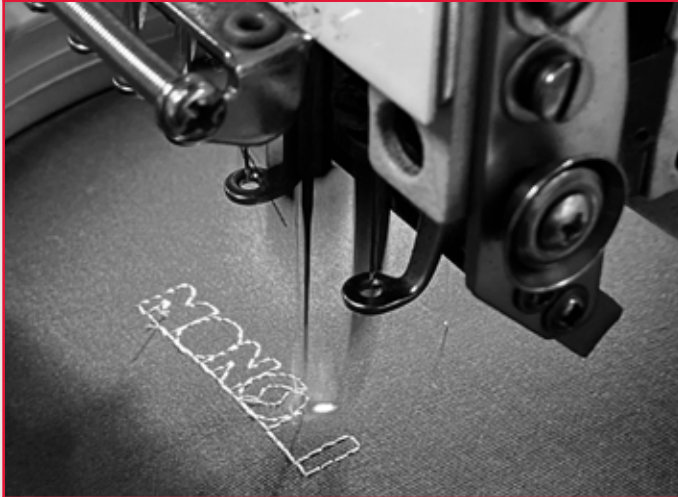
CAT 2 ATPV 11 cal/cm²





Rep your Brand on MCR Safety FR Clothing!

MCR Safety owns and operates a full customization facility within our distribution center located in Piperton, TN. Zero need to outsource your brand customization when MCR Safety can handle it from start to finish.



**Embroidery
Patches
Pockets**

**Reflective Stripes
Silkscreen
Heat Press**

Order Code	Description
FR Embroidery	
FREMB1	FR Embroider-1000 Stitches
FREMB2	FR Embroider-2000 Stitches
FREMB3	FR Embroider-3000 Stitches
FREMB4	FR Embroider-4000 Stitches
FREMB5	FR Embroider-5000 Stitches
FREMB6	FR Embroider-6000 Stitches
FREMB7	FR Embroider-7000 Stitches
FREMB8	FR Embroider-8000 Stitches
FREMB9	FR Embroider-9000 Stitches
FREMB10	FR Embroider-10,000 Stitches
FREMB11	FR Embroider-11,000 Stitches
FREMB12	FR Embroider-12,000 Stitches
FREMB13	FR Embroider-13,000 Stitches
FREMB14	FR Embroider-14000 Stitches
FREMB15	FR Embroider-15000 Stitches
FR Patches (Sewing Cost Only)	
<i>Contact us to receive a quote for custom designed patchwork</i>	
FREMBNP	FR Patch+Embroider Name+Sew on Garment
FRSEWPATBACK	FR Sew Patch Back
FRSEWPATLBST	FR Sew Patch Right Breast
FRSEWPATLLA	FR Sew Patch Upper Left Arm
FRSEWPATLRA	FR Sew Patch Lower Right Arm
FRSEWPATRBST	FR Sew Patch Left Breast
FRSEWPATULA	FR Sew Patch Upper Left Arm
FRSEWPATURA	FR Sew Patch Upper Right Arm
FR Pockets	
FRSEWOLLSP	FR Sew Outer Lower Left Standard Pocket
FRSEWOLRSP	FR Sew Outer Lower Right Standard Pocket
FR Reflective Stripes	
FRSEWREFLTAPELEG	FR Sew Silver Refl Tape Legs
FRSEWREFLTAPESLV	FR Sew Silver Refl Tape Sleeve
FRSEWRL	FR Sew Stripes, Chest Right
FRSEWSL	FR Sew Stripes, Chest Left
FRSEWSR	FR Sew Shoulder Right
FRSEWSL	FR Sew Shoulder Left
FRSEWSTRIPEB	FR Sew Stripes, Back- Left And Right Side
FRSEWSTRIPEL	FR Sew Stripes, Left Side
FRSEWSTRIPER	FR Sew Stripes, Right Side
FRSEWFULLHTAPE	FR Full H Reflective Configuration
FR Silkscreen	
FRSSMC	FR Silkscreen Minimum Order Charge
FRSSPUV1	1-19 Ea, Single FR Vest Print/Single Color
FRSSPUV2	20-47 Ea, Single FR Vest Print/Single Color
FRSSPUV3	48-503 Ea, Single FR Vest Print/Single Color
FRSSPUV4	504+ Ea, Single FR Vest Print/Single Color
FRSSSU	FR Silkscreen Setup Charge
FR Heat Press	
FRHPV1	FR Vests-Heat Press 16" or Less
FRHPV2	FR Vests-Heat Press Over 16"



<DUPONT>
Kevlar.



MU3624 Sizes: M-XXL

- Premium brown goatskin leather
- Wing Thumb
- Rolled Leather Hem
- A second layer of premium brown goatskin in the palm, fingertips thumb crotch, index finger and knuckle
- Double stitched, sewn with DuPont™ Kevlar® thread
- Arc rated 28.6 cal/cm² (HRC3/CAT3)
- Heat Attenuation Factor, HAF = 94%
- Shirred elastic around entire wrist



<DUPONT>
Kevlar.



MU3644 Sizes: M-XXL

- Premium Grade Grain Goatskin
- 5 inch split cowhide bell cuff
- Wing Thumb
- Rolled Leather Hem
- A second layer of premium brown goatskin in the palm, fingertips and knuckle
- Double stitched, sewn with DuPont™ Kevlar® thread
- Arc rated 28.6 cal/cm² (HRC3/CAT3)
- Shirred elastic around entire wrist

<DUPONT>
Kevlar.



MU3624G Sizes: M-XXL

- Premium brown goatskin leather
- 4 inch gauntlet cuff
- Wing Thumb
- Rolled Leather Hem
- A second layer of premium brown goatskin in the palm, fingertips thumb crotch, index finger and knuckle
- Double stitched, sewn with DuPont™ Kevlar® thread
- Arc rated 28.6 cal/cm² (HRC3/CAT3)
- Heat Attenuation Factor, HAF = 94%
- Fourchette panels for enhanced fit
- Shirred elastic wrist



CAT 3 ATPV 35 cal/cm²



***3 Month
Guaranteed
Wear Life!**

*We stand behind our MU series gloves. If they don't last 3 months then a new pair will come your way!



<small>DU PONT</small>
Kevlar ^{13 GAUGE}
 CUT A4 ABR 4 PUNY 4 HEAT 3 CAT 4

- MU3624GK Sizes: M-XXL
- Lined with DuPont™ Kevlar® - 360° cut protection
 - Premium goatskin - high tensile strength
 - Double stitched with Kevlar® thread - greater seam strength



<small>DU PONT</small>
Kevlar
 CUT A4 ABR 4 PUNY 4 HEAT 3 CAT 2

- MU3624FR Sizes: M-XL
- Premium Grade Grain Goatskin
 - Nomex® fabric back - excellent thermal stability
 - Ergonomic double leather pattern
 - Sewn with DuPont™ Kevlar® thread
 - 2 ½" cuff with shirred elastic around entire wrist



<small>DU PONT</small>
Kevlar
 CUT A4 ABR 4 PUNY 4 HEAT 3 CAT 4

- MU3624K Sizes: M-XXL
- Premium brown goatskin leather
 - 13 gauge DuPont™ Kevlar® lined
 - Wing style thumb
 - Double stitched, sewn with DuPont™ Kevlar® thread
 - Fouchette panels for enhanced fit
 - Arc rating of 61.4 cal/cm² (HRC4 / CAT4)
 - Shirred elastic around entire wrist



<small>DU PONT</small>
Kevlar
 CUT A4 ABR 4 PUNY 4 HEAT 3 CAT 2

- MU3624GFR Sizes: M-XL
- Premium Grade Grain Goatskin
 - Lined with DuPont™ Kevlar®
 - Nomex® back of hand
 - 2.5 inch cuff
 - Wing Thumb
 - Double stitched, sewn with DuPont™ Kevlar® thread
 - Arc rated 24.7 cal/cm² (HRC2 / CAT2)
 - Heat Attenuation Factor, HAF = 91.3%
 - Shirred elastic around entire wrist

CAT 3 ATPV 35 cal/cm²



***3 Month
Guaranteed
Wear Life!**



*We stand behind our MU series gloves. If they don't last 3 months then a new pair will come your way!

Memphis Series



Advanced Research Center

SAFETY



MP110AF

Memphis Series

MCR Safety's Memphis Series safety glasses are not only designed for your safety, but also for exceptional comfort. The bayonet style temples are made of a soft and flexible TPR material that provides a great fit for most individuals, regardless of their facial profile. This series features polycarbonate lenses that block 99.9% of UVA, UVB, and UVC rays and a wrap around lens design for

an unobstructed view and outstanding coverage. The flexible TPR nose pad and temples not only make this one of our most comfortable options, but also helps grip or hold these safety glasses in place. The MP1120 features green 2.0 filter lenses that can be used for some light brazing, torching, or welding applications. Looking for the best safety glasses? Look no further, choose MCR Safety!

- Sporty, lightweight sunglass design frame that all industrial workers love to wear
- Polycarbonate lenses provide 99.9% UVA/UVB/UVC protection
- Soft, flexible TPR temples and nose pad for added comfort
- Single lens, wrap-around design for unobstructed view
- Passes ANSI Z87+ standards
- Cord included

• Mossy Oak® Camo Glasses

- MOMP110AF ○ Clear UV-AF Coating
- MOMP112AF ○ Gray UV-AF Coating
- MOMP114AF ● Amber UV-AF Coating
- MOMP11B ● Brown Lens

• Black Frame

- MP110 ○ Clear
- MP110AF ○ Clear UV-AF Coating
- MP110DC ○ Clear **MAX36™** Coating
- MP110PF ○ Clear **MAX6™** Coating
- MP112 ○ Gray Lens
- MP112AF ○ Gray UV-AF Coating
- MP112DC ○ Gray **MAX36™** Coating
- MP112G ○ Gray Green Coating
- MP112PF ○ Gray **MAX6™** Coating
- MP113 ● Light Blue Lens
- MP114 ● Amber Lens
- MP114AF ● Amber UV-AF Coating
- MP117 ○ Silver Mirror Lens
- MP118 ● Blue Mirror Lens
- MP119 ○ Indoor/Outdoor Clear Mirror
- MP1120 ● Green Filter 2.0 Lens
- MP1130 ● Green Filter 3.0 Lens
- MP1150 ● Green Filter 5.0 Lens

Magnifiers

- | | |
|-----------------|------------------|
| ○ Clear Lens | ○ Gray Lens |
| MPH10 +1.0 Lens | MPH10G +1.0 Lens |
| MPH15 +1.5 Lens | MPH15G +1.5 Lens |
| MPH20 +2.0 Lens | MPH20G +2.0 Lens |
| MPH25 +2.5 Lens | MPH25G +2.5 Lens |



Swagger® SR4



SR438B



Swagger® SR4

Get your swag on and conquer the next safety hazard with the Swagger® SR4 Safety Glasses. Dual lens frame design and athletic bayonet temples with soft TPR permanently bonded all the way from the temple tips to the nose pads are the core elements in each SR4 offering. Each style meets or exceeds the ANSI Z87+ high impact standard. Who doesn't want to look good while they work?

- Next generation inspired design built for all environments
- Soft TPR extended from temples to nose pads for comfort and grip
- Dielectric (no metal parts)
- Lightweight and balanced frame with zero removable parts
- Rugged polycarbonate lenses filters 99.9% of harmful U.V. rays
- Applications for use in all industrial work settings, outdoors, on the lake, at the beach, and other places that you enjoy when not working



SR410 Clear Lens, Clear Frame and Temples, Gray TPR
 SR410PF **MAX6™** Clear Lens, Clear Frame and Temples, Gray TPR



SR422 Gray Lens, Black Frame and Black Temples, Gray TPR
 SR422PF **MAX6™** Gray Lens, Black Frame and Black Temples, Gray TPR



SR438B Blue Diamond Mirror Lens, Gun Metal Frame and Temples, Blue TPR



SR417BZDC **MAX36™** Black Mirror *Polarized* Lens, Clear Frame and Temples, Gray TPR



SR44R Fire Mirror Lens, White Frame and Temples, Red TPR

Dominator™ DM3



DM1328BZ



Dominator™ DM3

MCR Safety glasses are designed to provide solution-based eyewear protection. This series is available with MAX3™ scratch resistant coating which provides three times greater scratch resistance, MAX6™ anti-fog coating which is proven to provide six times greater fog-resistance and dissipation, or MAX36™ which provides MAX3™ and MAX6™ coatings on the lens. The Dominator™ DM3 glasses feature co-injected TPR wire core adjustable nose pads and temples for complete adjustability. Available in 4 frame options; Gun Metal/Red TPR, Clear/Blue TPR, Black/Black TPR, or Yellow/Blue TPR. Additionally, it is offered in 4 polarized lens options. Dominate your day with adjustability, protection, and comfort!

- Italian fashion, sport focused design
- Co-injected soft wire core adjustable TPR temples
- Co-injected wire core independently adjustable nose pads



- Gun Metal Color Frame, Red TPR
 - DM1310P ○ MAX3™ Clear Scratch Resistant Coating
 - DM1310PF ○ MAX6™ Clear Anti-Fog Coating
 - DM1312P ○ MAX3™ Gray Scratch Resistant Coating
 - DM1312PF ○ MAX6™ Gray Anti-Fog Coating
 - DM1319 ○ BossMan™ Indoor-Outdoor Clear Mirror
 - DM131R ● BossMan™ Fire Mirror
 - DM131RZ ● BossMan™ Fire Mirror, *Polarized*
 - DM131RDC ● MAX36™ Fire Mirror

- Clear Frame, Blue TPR
 - DM1320PF ○ MAX6™ Clear Anti-Fog Coating
 - DM1322PF ○ MAX6™ Gray Anti-Fog Coating
 - DM1323PF ○ MAX6™ Light Blue Anti-Fog Coating
 - DM1329 ○ BossMan™ Indoor-Outdoor Clear Mirror
 - DM1328B ● BossMan™ Blue Diamond Mirror
 - DM1328BZ ● BossMan™ Blue Diamond Mirror, *Polarized*
 - DM1328BDC ● MAX36™ Blue Diamond Mirror

- Black Frame, Black TPR
 - DM1330PF ○ MAX6™ Clear Anti-Fog Coating
 - DM1332PF ○ MAX6™ Gray Anti-Fog Coating
 - DM1334PF ● MAX6™ Amber Anti-Fog Coating
 - DM1337B ○ BossMan™ Black Mirror
 - DM1337BZ ○ BossMan™ Black Mirror, *Polarized*
 - DM1337BDC ○ MAX36™ Black Mirror
 - DM1337BZDC ○ MAX36™ Black Mirror, *Polarized*

- Yellow Frame, Blue TPR
 - DM1340PF ○ MAX6™ Clear Anti-Fog Coating
 - DM1348B ● BossMan™ Blue Diamond Mirror

- DM3 Magnifiers
 - Tortoise Frame, Tan TPR, MAX6™ Anti-Fog Coating
 - Clear Lens
 - Brown Lens
 - DM13H10PF +1.0 DM13H10BPF +1.0
 - DM13H15PF +1.5 DM13H15BPF +1.5
 - DM13H20PF +2.0 DM13H20BPF +2.0
 - DM13H25PF +2.5 DM13H25BPF +2.5

- Black Carbon Fiber Pattern Frame, Gray TPR
 - MAX36™ Gray, *Polarized* Lens
 - DM3H15GZDC +1.5
 - DM3H20GZDC +2.0
 - DM3H25GZDC +2.5

Interested in participating in a Wear Trial?



Visit: www.mcrcsafety.com/en/trial

Coveralls/Bib Overalls Sizing Chart

Measured Chest of Wearer	Measured Back of Wearer		Measured Waist of Wearer	Measured Sleeves of Wearer		Suggested Numeric Size	Suggested Alpha Size
	Reg.	Tall		Reg.	Tall		
30"-33"	20"	21"	28"-30"	23"	25"	36	XS
34"-37"	20"	22"	30"-32"	23.5"	25"	38	S
38"-40"	21"	23"	32"-34"	24"	26"	40-42	M
41"-44"	24"	25"	34"-36"	24"	26"	44-46	L
45"-47"	24"	26"	36"-38"	24.5"	26"	48-50	XL
48"-51"	26"	27"	38"-40"	25"	27"	52-54	2XL
52"- 55"	28"	29"	42"-44"	26"	28"	56-58	3XL
56"- 59"	30"	30"	46"-48"	26"	28"	60-62	4XL
60"-62"	33"	34"	50"- 52"	26.5"	29"	64-66	5XL
63"-65"	36"	37"	54"- 56"	27"	30"	68-70	6XL
66"-68"	37"	38"	58"-60"	27.5"	31"	72	7XL
Height of 5'7" or less - Order Length:							27.5
Height of 5'8" or 6'1" - Order Length:							Regular
Height of 6'2" or greater - Order Tall Length:							Tall

Shirts/Jackets/Liners Sizing Chart

Measured Chest of Wearer	Measured Back of Wearer		Measured Sleeves of Wearer		Suggested Alpha Size
	Reg.	Tall	Reg.	Tall	
36"- 38"	20"	21"	24"	26"	S
40"- 42"	21"	22"	24.5"	26"	M
44"- 46"	24"	24"	26"	27"	L
48"- 50"	25"	26"	26"	27"	XL
52"- 54"	27"	28"	27"	29"	2XL
56"- 58"	28"	29"	27"	29"	3XL
60"- 62"	31"	32"	28"	30"	4XL
64"- 66"	34"	35"	28"	30"	5XL

