

AUGUSTION

ANNUAL FALL CLASSIC AUCTION WORLDNET FACILITY • GREELEYVILLE, SC FRIDAY, SEPTEMBER 17TH, 2021

9 AM

ITEMS
BEING
ADDED
DAILY!
VISIT OUR
WEBSITE FOR
UPDATED
LISTINGS!



2018 WESTERN STAR 4700SF
TRIAXLE DUMP TRUCKS



KOMATSU PC 210 LC-11

WWW.WORLDNETAUCTIONS.LIVE.COM



2015-2010 FLEET MAINTAINED
TRACTORS



2003 PETERBILT 379 TRUCK TRACTOR
W/CAT C15 POWER

WorldNet Auctions Live
LLC

1533 MCMILLAN RD., GREELEYVILLE, SC 29056

843-426-4255

email: info@worldnetauctions.live.com

SCAL #3965F • SCAL #1966

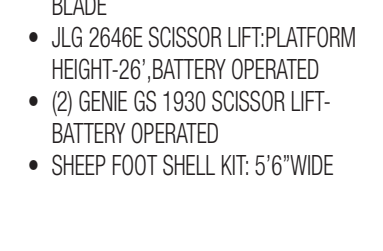
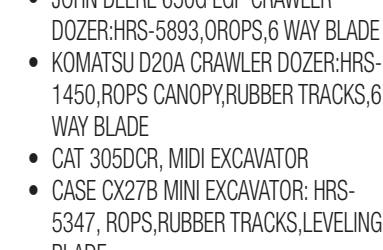
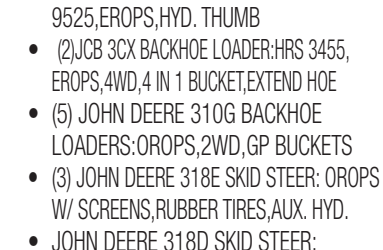
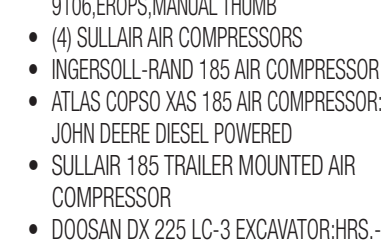
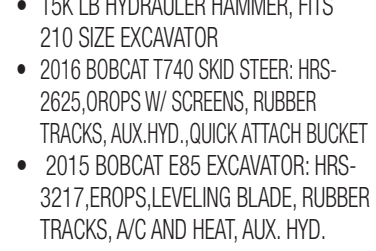
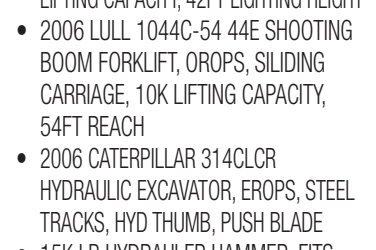
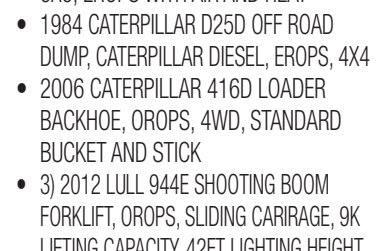
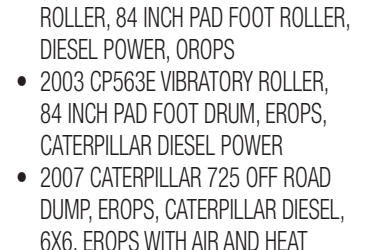
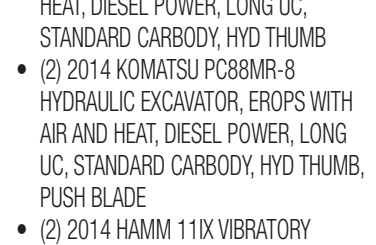
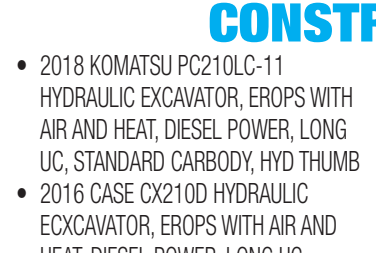
Online Bidding Powered By: proxibid & EquipmentFacts.com

ANNUAL FALL CLASSIC AUCTION

FRIDAY, SEPT. 17TH • 9AM WORLDNET FACILITY • 1533 MCMILLAN RD, GREELEYVILLE, SC

CONSTRUCTION

- 2018 KOMATSU PC210LC-11 HYDRAULIC EXCAVATOR, EROPS WITH AIR AND HEAT, DIESEL POWER, LONG UC, STANDARD CARBODY, HYD THUMB
- 2016 CASE CX210D HYDRAULIC EXCAVATOR, EROPS WITH AIR AND HEAT, DIESEL POWER, LONG UC, STANDARD CARBODY, HYD THUMB
- (2) 2014 KOMATSU PC88MR-8 HYDRAULIC EXCAVATOR, EROPS WITH AIR AND HEAT, DIESEL POWER, LONG UC, STANDARD CARBODY, HYD THUMB, PUSH BLADE
- (2) 2014 HAMM 11IX VIBRATORY ROLLER, 84 INCH PAD FOOT ROLLER, DIESEL POWER, OROPS
- 2003 CP563E VIBRATORY ROLLER, 84 INCH PAD FOOT DRUM, EROPS, CATERPILLAR DIESEL POWER
- 2007 CATERPILLAR 725 OFF ROAD DUMP, EROPS, CATERPILLAR DIESEL, 6X6, EROPS WITH AIR AND HEAT
- 1984 CATERPILLAR D25D OFF ROAD DUMP, CATERPILLAR DIESEL, EROPS, 4X4
- 2006 CATERPILLAR 416D LOADER BACKHOE, OROPS, 4WD, STANDARD BUCKET AND STICK
- 3) 2012 LULL 944E SHOOTING BOOM FORKLIFT, OROPS, SLIDING CARIRAGE, 9K LIFTING CAPACITY, 42FT LIGHTING HEIGHT
- 2006 LULL 1044C-54 44E SHOOTING BOOM FORKLIFT, OROPS, SILIDING CARRIAGE, 10K LIFTING CAPACITY, 54FT REACH
- 2006 CATERPILLAR 314CLCR HYDRAULIC EXCAVATOR, EROPS, STEEL TRACKS, HYD THUMB, PUSH BLADE
- 15K LB HYDRAULIC HAMMER, FITS 210 SIZE EXCAVATOR
- 2016 BOBCAT T740 SKID STEER: HRS-2625, OROPS W/ SCREENS, RUBBER TRACKS, AUX. HYD., QUICK ATTACH BUCKET
- 2015 BOBCAT E85 EXCAVATOR: HRS-3217, EROPS, LEVELING BLADE, RUBBER TRACKS, A/C AND HEAT, AUX. HYD.
- 1999 INGERSOLL-RAND DD-110 ROLLER: HRS-1010, DOUBLE DRUM, VIBRATORY, ROPS CANOPY, WATER SYSTEM
- 2001 KOMATSU PC200LC-6 EXCAVATOR: HRS-8610, EROPS
- 2000 JOHN DEERE 230LC EXCAVATOR: HRS-9106, EROPS, MANUAL THUMB
- (4) SULLAIR AIR COMPRESSORS
- INGERSOLL-RAND 185 AIR COMPRESSOR
- ATLAS COPSO XAS 185 AIR COMPRESSOR: JOHN DEERE DIESEL POWERED
- SULLAIR 185 TRAILER MOUNTED AIR COMPRESSOR
- DOOSAN DX 225 LC-3 EXCAVATOR: HRS.-9525, EROPS, HYD. THUMB
- (2) JCB 3CX BACKHOE LOADER: HRS 3455, EROPS, 4WD, 4 IN 1 BUCKET, EXTEND HOE
- (5) JOHN DEERE 310G BACKHOE LOADERS: OROPS, 2WD, GP BUCKETS
- (3) JOHN DEERE 318E SKID STEER: OROPS W/ SCREENS, RUBBER TIRES, AUX. HYD.
- JOHN DEERE 318D SKID STEER: OROPS, RUBBER TIRES, AUX. HYD.
- CLARK FORKLIFT: PROPANE POWERED, OROPS
- 1997 CATERPILLAR 12H MOTORGRADER: HRS.-6598, 12' MOLDBOARD, SCARIFIER EROPS, TILT, ARTICULATING COUNTY MACHINE
- JOHN DEERE 650G LGP CRAWLER DOZER: HRS-5893, OROPS, 6 WAY BLADE
- KOMATSU D20A CRAWLER DOZER: HRS-1450, ROPS CANOPY, RUBBER TRACKS, 6 WAY BLADE
- CAT 305DCR, MIDI EXCAVATOR
- CASE CX27B MINI EXCAVATOR: HRS-5347, ROPS, RUBBER TRACKS, LEVELING BLADE
- JLG 2646E SCISSOR LIFT: PLATFORM HEIGHT-26', BATTERY OPERATED
- (2) GENIE GS 1930 SCISSOR LIFT- BATTERY OPERATED
- SHEEP FOOT SHELL KIT: 5'6" WIDE





CONSTRUCTION CONT'D

- (2) POLARIS 700 6X6 RANGERS: OROPS, MANUAL DUMP BODY, FRONT MOUNTED WINCHES
- 1984 JOHN DEERE 544 WHEEL LOADER, OROPS, ARTICULATING, JD DIESEL POWER
- DRESSER 412B MOTOR SCRAPER, DIESEL POWER, OROPS
- BOXER 525DX WALK BEHIND SKID STEER, DIESEL POWER, GP BUCKET
- 1998 CAT D3CLGP CRAWLER DOZIER, OROPS, PAT BLADE, LIMB RISERS, HIGH STAT
- 2010 TAKEUCHI TB180 HYDRAULIC EXCAVATOR, EROPS, W/AIR & HEAT, RUBBER TRACKS, PUSH BLADE, HYDRAULIC THUMB
- 1997 BLAW KNOX PF3172 ASPHALT PAVER, OROPS, RUBBER WHEELS, DIESEL POWER

- 2005 KENWORTH T800 TRI-AXLE DUMP TRUCK :CAT C-11 ENGINE,(IN FRAME REBUILD),ALLISON AUTO. TRANS.
- 1986 INTERNATIONAL S1700 FUEL TRUCK: INTERNATIONAL DIESEL ENGINE,10 SPEED
- 2005 INTERNATIONAL 4200 SERVICE TRUCK:MILES-191,158, DIESEL POWERED,EATON FULLER 6 SPEED,CRANE,AIR COMPRESSOR,SINGLE AXLE TANDEM WHEELS
- (3) 2013 PETERBILT 386 DAY CAB;ISX 15 ENGINE,EATON FULLER 10 SPEED, WETLINE
- 2000 MACK RD688S TRI-AXLE DUMP TRUCK:MACK POWERED DIESEL, EATON FULLER 8 SPEED
- 2003 MACK CV513 GRANITE REAR DISCHARGE MIXER TRUCK: 117,604,MACK DIESEL,EATON FULLER 9 SPEED, MCNEILUS 11 CU. YD BODY
- 2007 VOLVO VN SLEEPER TRUCK: VOLVO VED12 ENGINE,EATON FULLER AUTOMATIC



TRUCKS

- (2) 2018 WESTERN STAR 4700SF TRIAXLE DUMP TRUCKS, ALLISON AUTOMATIC TRANSMISSION, DETROIT 475HP DIESEL ENGINE, 20K FRONTS, 46K REARS. 190K MILES & 210K MILES ROGERS SMOOTH SIDE STEEL BODY

WITH WARRANTY REMAINING

- (2) 2017 INTERNATIONAL HX620 TRI AXLE DUMPS, CUMMINS ISX 455 455 HP, ALLISON 4500RDS TRANS, HOT SHIFT PTO, DOUBLE FRAMED, 18K FRONTS, 46 REARS, PTO
- (2) 2016 CATERPILLAR CT660S DUAL AXLE DUMP TRUCK:CAT CT13 ENGINE,AUTO TRANS,26 YD. BODY
- (4) 2015 FREIGHTLINER COLUMBIA TRUCK TRACTORS, CUMMINS ISX 15 DIESEL POWER, 10 SPEED EATON FULLER TRANS, ALUMINUM WHEELS AND TANKS, PTO AND WET LINE
- 2007 KENWORTH T800 TRI-AXLE DUMP TRUCK:CAT C-13 ENGINE(IN FRAME REBUILD),EATON FULLER MANUAL TRANS.

- 2008 VOLVO SLEEPER TRUCK: VOLVO D13 ENGINE,EATON FULLER MANUAL TRANS.
- 2007 FORD F 750 SINGLE AXLE DUMP, CAT DIESEL, ALLISON AUTO TRANS, ONLY 138,000 MILES
- 1982 MACK RWS766LST SUPER LINER DAY CAB: CUMMINS NTC-400 ENGINE,EATON FULLER 15 SPEED,WETLINE,DUAL STACKS ***BILL OF SALE ONLY***
- 1982 FORD 8000 DUAL AXLE DUMP TRUCK: MILES-66,400,CAT 3208 DIESEL ENGINE,AUTO. TRANS.,DIFF. LOCK,DUAL AXLE TANDEM WHEELS,ELECTRIC TARP SYSTEM
- 2003 PETERBILT TRUCK TRACTOR, CATERPILLAR C15 6ZN POWER, 13 SPEED EATON FULLER TRANS, 70" BUNK SLEEPER, 80% VIRGIN RUBBER REMAINING, TRI PAC, ALUMINUM WHEELS, ENGINE BRAKE, CRUISE, NEW DUAL EXHAUST, NOTE: RECENT ENGINE OVERHAUL





TRUCKS, TRAILERS, FARM EQUIPMENT & CONSTRUCTION AUCTION HIGHLIGHTS

TRUCKS CONT'D

- 2013 FREIGHTLINER CASCADIA TRUCK TRACTOR, DETROIT DD13 POWER, 10 SPEED EATON FULLER TRANS, DOUBLE BUNK SLEEPER, TRAILERS
- (5) 2014 PETERBILT 386 TRUCK TRACTORS, CUMMINS ISM POWER, 10 SPEED EATON FULLER TRANS, ALUMINUM WHEELS AND TANKS, PTO AND WET LINE
- 2012 FREIGHTLINER CASCADIA TRUCK TRACTOR, CUMMINS ISM POWER, 10 SPEED EATON FULLER TRANS, ALUMINUM WHEELS AND TANKS, PTO AND WET LINE
- (4) KENWORTH T800 TRUCK TRACTORS, CUMMINS ISM POWER, 10 SPEED EATON FULLER TRANS, ALUMINUM WHEELS AND TANKS, PTO AND WET LINE
- (5) 2013 PETERBILT 386 TRUCK TRACTORS, CUMMINS ISM POWER, 10 SPEED EATON FULLER TRANS, ALUMINUM WHEELS AND TANKS, PTO AND WET LINE
- 2012 PETERBILT 386 TRUCK TRACTOR, CUMMINS ISM POWER, 10 SPEED EATON FULLER TRANS, ALUMINUM WHEELS AND TANKS, PTO AND WET LINE
- (3) 2011 PETERBILT 386 TRUCK TRACTORS, CUMMINS ISM POWER, 10 SPEED EATON FULLER TRANS, ALUMINUM WHEELS AND TANKS, PTO AND WET LINE
- 2010 PETERBILT 385 TRUCK TRACTOR, CUMMINS ISM POWER, 10 SPEED EATON FULLER TRANS, ALUMINUM WHEELS AND TANKS, PTO AND WET LINE

TRAILERS

- 2020 GLOBE 25 TON TAG TRAILER, DUAL TANDEM, RAMPS, PINTLE HITCH, WOOD FLOORING
- 2010 KAUFMAN 35 TON TAG TRAILER, PINTLE HITCH, AIR BRAKES, HYDRAULIC DOVE TAIL, TRI

- DUAL AXLES, JACK
- 2008 ANDERSON TILT TRAILER: 20' LX 8' W, TILT, DUAL AXLE TANDEM WHEELS, PINTLE HITCH, ELECTRIC BRAKES, WOOD FLOOR
- (2) NEW CLAY'S 6X12 UTILITY TRAILER: SINGLE AXLE
- (4) NEW CLAY'S 76" X 16' UTILITY TRAILER: DUAL AXLE
- (2) NEW CLAY'S 7X20 EQUIPMENT TRAILER: DUAL AXLE, FLIP DOWN RAMPS
- TOWMASTER TRI AXLE 25TON TAG ALONG TRAILER
- (4) UTILITY FLATBED TRAILERS, 48 FOOT, SLIDING AXLES, WOOD DECKING

TRACTORS AND FARM RELATED

- CHALLENGER MT455B W/ SIDE CUTTER: HRS-497, EROPS, 2WD, TURF TIRES
- JOHN DEERE 5055E TRACTOR: HRS-473, ROPS CANOPY, 2WD, 1 REMOTE
- WOODS 7144RD BATWING MOWER: PTO DRIVEN, HYDRAULIC BATWINGS
- UNVERFERTH 3 PT. FIELD CULTIVATOR

NEW SUPPORT EQUIPMENT

- (3) NEW 40' MULTI DOOR CONTAINER
- (14) 20' WROUGHT IRON GATES (PAIR)
- (6) 14' WROUGHT IRON GATES (PAIR)
- (4) NEW CONEX CONTAINERS WITH SIDE DOOR & WINDOW
- (3) SETS OF FORK EXTENSIONS
- (4) SELF DUMPING HOPPERS
- (6) HYDRAULIC SKID STEER GRAPPLE ATTACHMENTS
- (4) 25 DRAWER WORK BENCH
- (6) 18 DRAWER WORK BENCH
- (4) 10 DRAWER WORK BENCH
- (2) 20 DRAWER WORK BENCH
- (4) 15 DRAWER WORK BENCH
- (5) VARIOUS SIZED CONTAINER SHELTERS & ARCHED SHELTERS
- VARIOUS SIZED MOBILE TOILETS

- (6) PALLETS OF 5 BIND
- (1) 8' X 20' PCS STEEL FR
- (2) ELECTRIC WINCHES
- (5) CAT CLEAN OUT BUC
- (2) PM PUGO V BUCKE
- (5) LATE MODEL WACK

VEHICLES

- 2005 DODGE DAKOTA PICKUP: MILES-159,02 CAB, 2WD, CRUISE, TILT,
- 2007 CHEVROLET COL 175,396, 2WD, REG. CA
- 2006 MERCEDES BENZ AUTO TRANS, LEATHER
- 1980 JEEP LAREDO W

BOATS

- BASSTRACKER TX-17 / TRACKER 60 PRO SER TRAILER, TROLLING MO DEPTH FINDER
- ZODIAC JET BOAT

SKID STEER ATTACHMENTS

- (4) SKID STEER SKELET ATTACHMENTS
- (10) HYDRAULIC SKID S ATTACHMENTS
- (6) HYDRAULIC SKID S ATTACHMENTS WITH 2
- (4) HYDRAULIC SKID S ATTACHMENTS
- (2) HYDRAULIC SKID S ATTACHMENTS
- (2) HYDRAULIC SKID S ATTACHMENTS
- (2) HYDRAULIC SKID S ATTACHMENT
- (2) HYDRAULIC SKID S ATTACHMENTS

WWW.WORLDCONSTRUCTIONAUCTIONS.COM



FRIDAY, SEPT. 17, 2021 • 9AM
WORLDNET FACILITY
1533 MCMILLAN RD, GREELEYVILLE, SC

**THIS BROCHURE WAS PRINTED IN ADVANCE!
 MANY MORE ITEMS BEING ADDED DAILY**

WHEELS & 10 CHAINS
 ATTACHMENTS
 BUCKETS & DIGGING BUCKETS
 ATTACHMENTS FOR EXCAVATOR
 RUBBER PLATE TAMPS

- (1) HYDRAULIC SKID STEER ROLLER ATTACHMENT
- (1) HYDRAULIC SKID STEER TRENCHER ATTACHMENT
- (1) HYDRAULIC SKID STEER TRIMBLE ATTACHMENT
- CATERPILLAR LT18B TILLER ATTACHMENT FOR SKID STEER V BUCKET

NEW TRAILERS & MISCELLANEOUS

- (2) NEW 7X16 TANDEM AXLE ENCLOSED TRAILERS
- (2) NEW 6X12 SINGLE AXLE ENCLOSED TRAILERS
- (2) NEW 22' HEAVY DUTY EQUIPMENT TRAILERS WITH RAMPS
- (4) NEW 16' TANDEM AXLE TAG TRAILERS WITH TAILGATES
- (6) NEW 12' SINGLE AXLE TAG TRAILERS WITH TAILGATES
- (2) FEED TRAIN UTV BULK DEER FEEDERS
- (2) FEED TRAIN PULL TYPE DEER FEEDERS
- EASY-GO BATTERY OPERATED GOLF CART
- (2) POLARIS 700 6X6 RANGERS: OROPS, MANUAL DUMP BODY, FRONT MOUNTED WINCHES

SLT
 1, EXTENDED
 AUTO TRANS, COLD A/C
 COLORADO PICKUP: MILES-
 100,000, AUTO TRANS.
 Z E350: MILES-136,276,
 AND POWER INTERIOR
 1/2 HARD TOP, 4X4

ALUMINUM BOATW/
 150HP MOTOR: SINGLE AXLE
 MOTOR, HUMMINGBIRD

ATTACHMENTS

1 TON BUCKET
 SKID STEER BRUSH CUTTER
 SKID STEER AUGER
 SKID STEER HEADS
 SKID STEER ROTARY TILLER
 SKID STEER BROOM
 SKID STEER SWEEPER
 SKID STEER CEMENT MIXER
 SKID STEER GRAPPLE



AUCTIONS LIVE . COM





**LOCAL ELECTRIC,
TELEPHONE & TREE CO-OP'S**

- 2006 FORD F-150 PICK UP, GAS POWER, AUTO TRANS, SINGLE CAB 2WD, BRUSH GUARD
- 2002 GMC 2500HD PICK UP. GAS POWER, AUTO TRANS, SINGLE CAB, 4WD
- 2010 FORD E350 WORK VAN, GAS POWER, AUTO TRANS, 2WD
- 2001 CHEVROLET 2500HD PICK UP, GAS POWER, AUTO TRANS, SINGLE CAB, 4WD
- 2008 FORD EXPLORER XLT, GAS POWER, AUTO TRANS, 2WD, POWER WINDOWS, LOCKS AND SEATS, COLD AC
- 2007 DODGE 1500 PICK UP, EXTENDED CAB, 2WD, POWER WINDOWS, LOCKS AND SEATS, COLD AC, SPRAY IN BED LINER



**WORLDNET
IS BOOKING AUCTIONS FOR 2021**

**For More Information Contact Jason Wilson
803-460-2226 or 843-426-4255**

UPCOMING AUCTION

**WORLD OF CONCRETE 21
LIVE VIRTUAL AUCTION**

CHICAGO, ILLINOIS



Your City, County & State Marketplace!

www.govworldauctions.com

Please check each item for fees & Charges.

This website is strictly for City, County, & State Governments to sell their surplus items.

SALES CLOSE EVERY TWO WEEKS!

No Registration Fee

QUESTIONS? PLEASE CONTACT

**BROOKS DISHER 843.409.1045 • CHUCK EASLER 843.372.0950
JASON WILSON 843.426.4255 • RICH KELLY 843.209.4371
SCAL#: 4185F**





**1533 MCMILLAN ROAD
GREELEYVILLE, SC 29056
843-426-4255**

**email: info@worldnetauctionslive.com
www.worldnetauctionslive.com**



Online Bidding Powered By:



***If you would like to be added to our
mailing list call 843-426-4255***

FIRST CLASS MAIL

PRESORTED
FIRST CLASS MAIL
US POSTAGE PAID
COLUMBIA, SC
PERMIT #487

**TIME SENSITIVE MAIL.
PLEASE DELIVER ON TIME.**



VISIT OUR WEBSITE!

◆TERMS AND CONDITIONS◆

Call our Office with any questions at 843-426-4255 or email inquiries to info@worldnetauctionslive.com.

CONSIGNMENTS: **ACCEPTING CONSIGNMENTS DAILY** Monday thru Friday 8:30 am to 4:00 pm. COMMISSION IS 10% WITH A \$10 (TEN DOLLAR) MINIMUM CHARGE PER TAG.

TERMS: ALL ITEMS SOLD AS IS WHERE IS. WORLDNET AUCTIONS DOES NOT GUARANTEE ANY ITEM AS TO USEFULNESS OR MERCHANTABILITY OR ANY INTENDED PURPOSE. WORLDNET AUCTIONS DOES NOT GUARANTEE ANY YEAR MODELS, HOURS, ETC. SC SALES TAX LAWS APPLY. THERE IS A 10% BUYER FEE. THERE IS A \$50.00 TITLE FEE ADDED TO EACH TITLED ITEM. NO EXCEPTIONS! AUCTIONEER RESERVES THE RIGHT TO ADD OR DELETE ITEMS FROM THE AUCTION. ALL ITEMS MUST BE PAID FOR IN FULL ON SALE DAY WITH USA CURRENCY. TERMS ARE CASH, CASHIERS CHECK, PERSONAL OR BUSINESS CHECK, OR CREDIT CARDS. NO ITEMS WILL BE LOADED UNTIL ITEMS ARE PAID FOR IN FULL. BUYERS ARE RESPONSIBLE FOR LOADING AND REMOVAL AND TRANSPORT OF ANY PURCHASE. WNA WILL ASSIST IN LOADING TO THE BEST OF OUR ABILITY, BUT IS IN NO WAY RESPONSIBLE FOR LOADING. WNA WILL NOT SECURE LOADS. ALL SALES ARE FINAL. ALL CREDIT/DEBIT CARD PAYMENTS 3.75%. BUYER IS RESPONSIBLE FOR THEIR OWN INSPECTION.

ALL ITEMS TO BE REMOVED WITHIN THREE WEEKS OF SALE UNLESS OTHERWISE SPECIFIED! PREVIEW IS PRESENT DATE TO SALE DATE. ALLOW 30 BUSINESS DAYS FOR TITLE PAPERWORK TO BE PROCESSED. **CHECK FOR HOLIDAY LOAD OUT SCHEDULE.**

ANY UNSOLD ITEM LEFT OVER 60 DAYS WILL INCUR \$10 PER DAY PER ITEM STORAGE FEES. ANY SOLD ITEM LEFT OVER 60 DAYS WILL BE SOLD AT NEXT AUCTION IN ABSOLUTE ROW.

FOR INFO CALL THE OFFICE 843-426-4255. NOW ACCEPTING VISA, MASTERCARD AND DISCOVER. CREDIT CARD FEES APPLY.

ALL ITEMS SUBJECT TO PRIOR SALE. Due to circumstances beyond our control, a piece may be removed from auction. If you have an interest in one particular piece please call the sale site to confirm said piece has been delivered and checked in to auction.

ALL ITEMS TO HAVE KEY, BATTERIES, AMPLE FUEL AT CHECK IN OR IT WILL BE SUPPLIED AND YOU WILL BE CHARGED. ALL VEHICLES MUST HAVE TITLE AT CHECK IN & BE SIGNED OVER TO WORLDNET AUCTIONS LIVE LLC. NO EXCEPTIONS! PLEASE PRACTICE SOCIAL DISTANCING. MASK ARE RECOMMENDED.

WORLDNET AUCTIONS IS NOT RESPONSIBLE FOR ANY PRICE PROTECTION!

ONLINE BIDDING: IF YOU WISH TO BID ONLINE THERE IS AN ADDITIONAL 2% ADMIN FEE.

GO TO WWW.PROXIBID.COM TO REGISTER FOR ONLINE BIDDING ONLY.

NOTE: All Announcements made on the day of sale supercede any printed material.

Visit Us Online at: www.worldnetauctionslive.com

