



WORMHOLE SWITCH

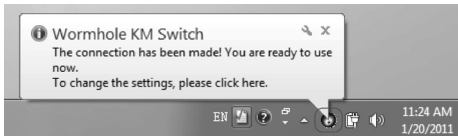
QUICK INSTALLATION GUIDE

JUC100

GETTING STARTED



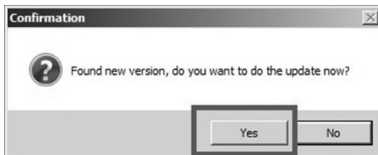
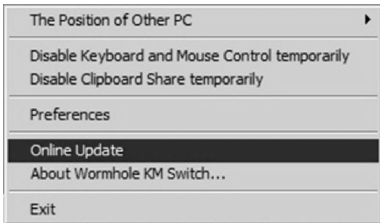
- Step 1. Connect one end of the **j5 Wormhole Switch** to a USB port on one of two computers.
- Step 2. Connect the other end of the **j5 Wormhole Switch** to a USB port on the second computer.
- Step 3. The device will automatically start software installation on both computers.
- Step 4. A pop up "AutoPlay" window may appear. If this happens please click on the option, "Run WKMLoader.exe" and click "Yes" to complete installation.



Update the software version of your Wormhole:

Note:

1. Please make sure **the network is available** during the driver update.
2. Remove the cable from the slave computer (keep the cable plugged into the primary computer).
3. Start the online update : Right-click the Wormhole Icon on the bottom right-hand corner of the screen).
4. Select "**Online update**", and Select "**Yes**" to proceed.



5. Follow the directions to complete installation.



Extra Features

Keyboard and Mouse Sharing

Move the mouse cursor between two displays naturally and seamlessly.



Switch the Keyboard usage to another computer .

***Keyboard control always follows the cursor**



Clipboard Sharing

With the clipboard sharing feature, you can easily edit, copy or paste clipboard content bi-directionally.



File Transferring

It is the easiest and fastest way to transfer files between two computers. Just simply drag and drop the file or folder to the other computer.



Required Environment

- Microsoft Windows 7, Vista, XP, 2000 SP3 (32-bit or 64-bit) Compatible
- CPU: Intel Pentium II Processor or later
- RAM: 512MB RAM or higher
- Hard disk space requirement of at least 100MB
- Available USB port 1.1 or 2.0 port

Package Contents

- Wormhole Switch Adapter (1.8 meter)
- Quick Installation Guide
- User Manual

Regulatory Compliance

- FCC / CE / C-Tick / VCCI

Disclaimer

Information in this document is subject to change without notice. The manufacturer does not make any representations or warranties (implied or otherwise) regarding the accuracy and completeness of this document and shall in no event be liable for any loss of profit or any commercial damage, including but not limited to special, incidental, consequential, or other damage. No part of this document may be reproduced or transmitted in any form by any means, electronic or mechanical, including photocopying, recording or information recording and retrieval systems without the expressed written permission of the manufacturer.

STOP !!

If you have any issues using this product, please try the instructions below before returning this product to the store.

1. The User Manual

Contains detailed instructions and a troubleshooting section, many common issues can be easily resolved by reading the user manual.

2. Online Support

Please visit the j5 create website (www.j5create.com) to find the latest software for your device. If you still experience issues, you can submit a trouble ticket through j5 web support. Your ticket will be handled within 24 hours. We stand behind our products and it is our goal to provide you world class support.

3. Telephone Support

Please call us @ 888-689-4088 and one of our support technicians will be very happy to assist you.

TECHNICAL SUPPORT

Toll free number: 888-689-4088

Business Hours: Mon. – Fri. 10:00 a.m – 6:00 p.m E.S.T

Email: service@j5create.com