

# HARTMANN & FORBES

WOVEN-TO-SIZE GRASSWEAVE





[WTS] GRASSWEAVE  
WOVEN-TO-SIZE

An organic, modern mix of refined to rustic textures, crafted with artisanal technique to exquisite detail. Handwoven with sustainable blends of grass fibers, including banana stem, ramie, arrowroot, river reed, jute, abaca, vetiver, palm, water hyacinth, walingi and bamboo.



Designer – Kathleen Navarra, Navarra Design Inc | Photo – Kurt Manley

## ESSENCE

This foundational weave is offered in a broad assortment of sophisticated colorways to create a shade for every room. Its refined beauty and lightweight design provides universal appeal with a pure and simple narrative.

LE3012 Sand

LE3003 Cloud

LE3006 Shell

LE3015 Muslin

LE3042 Wilderness

LE3118 Brush

LE3057 Denim

NEW | LE3139 Lark

NEW | LE3039 Fog

LE3154 Garden

LE3054 Sprig

NEW | LE3418 Linseed

LE3030 Fescue

NEW | LE3130 Bisque

LE3018 Sterling

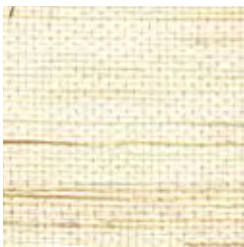
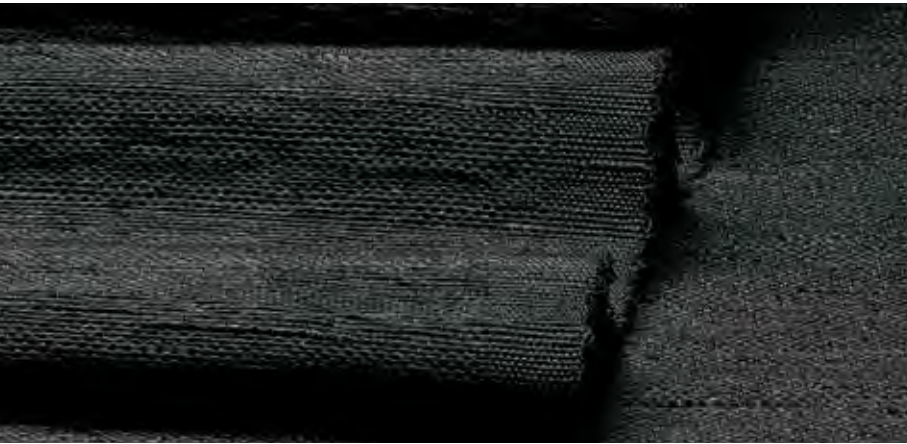
NEW | LE3009 Citrine

NEW | LE3027 Cork

LE1012 Farandine

NEW | LE3036 Ash

LE1039 Lustring



LE1006 Cambric



LE1053 Silesia



LE1062 Challis



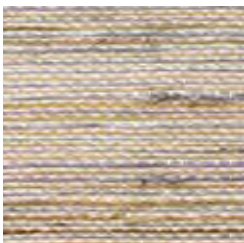
LE1055 Sindon



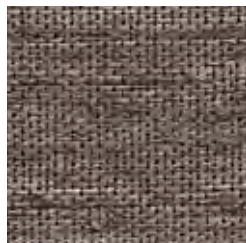
LE1052 Batiste



LE1050 Sendal



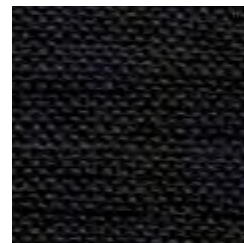
LE1015 Cambresine



LE1054 Borato



LE1084 Zephyr



LE1087 Georgette **NEW**

## ELEMENTS

Fresh, pure and timeless, this richly refined linen-like textile offers sophisticated beauty in a wide array of colorways ranging from neutral hues to dramatic darker tones, including Georgette a new rich black.



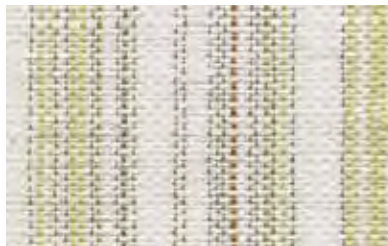
Designer - Lindsay Anyon Brier, Anyon Interior Design | Photo - John Merkl



Design - Brian del Toro, Inc | Photo - Marco Ricca

# TABARET

Influenced by vintage European linen, this handwoven textile of ramie fiber offers subtle variegated stripes in nature's hues, creating a harmonious mix of status and pedigree.



LE2630 Lawn



LE2660 Greylake



LE2657 Lagoon



LE2645 Brownstone





LE1003 Shantung



LE1051 Tulle

## GLIMMER

This lustrous fine weave is ethereal, almost weightless, accented with micro hand knots that inject a pared-down luxe aesthetic.



LE1303 Tamin



LE1360 Zanella





## DRIFTWOOD

Inspired by the casual elegance of sun-washed driftwood, this design blends ivory with weathered hues of gold, grey and off-black.



LE1107 Utara



LE1124 Togo



LE1109 Selatan



LE1160 Sapi



LE1187 Rinca



Price Group: 6 | Max Width: 180"

Available Styles: Roman, Roller, Drapery, Top Treatment

Shown: LE1124 Driftwood – Togo, Traditional Style Roman  
EW259 Geometry – Contorno, Drapery | WL364 Santa Lucia – Cypress, Wallcovering



## GLISTEN

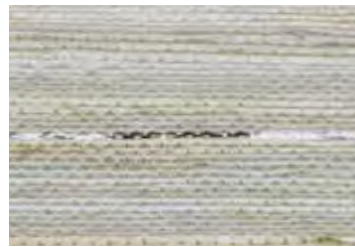
A delicate accent of silvery filaments infuses this collection with metallic that sparkles under incandescent lighting.



LE1403 Aura



LE1421 Calcite



LE1423 Nautilus



Designer - Tineke Triggs, Artistic Designs for Living | Photo - Aubrie Pick Photography



# RAINFALL

To create a pleasant variance, softly reflective metallic and colored warp threads dance with white ramie weft fibers in harmonious, handwoven choreography.



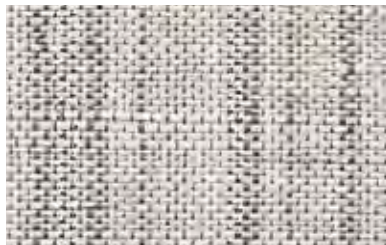
LE2024 Sunset



LE2021 Sunrise



LE2012 Dawn



LE2039 Dusk



Price Group: 6 | Max Width: 180"

Available Styles: Roman, Roller, Drapery, Top Treatment

Shown: LE2021 Rainfall – Sunrise, Splitview™ Style Roman | SH02 Linen, Sheer Liner





## PATHWAYS

Stripes are the hallmark detail in this collection of exquisite gauzy weaves. Presented either as open or feathered stripes.



LE1030 Vatulele



LE1032 Namale



LE1020 Awan



LE1024 Hutan





Designer – Kathleen Navarra, Navarra Design Inc | Photo – Kurt Manley



LE2203 Whitecap



LE2212 Sandle



LE2215 Briarwood



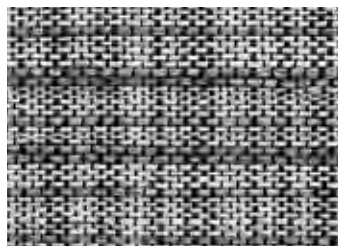
LE2272 Sandstone

## TARTAN

Artisans masterfully guide shuttles wound with handspun ramie, in variegated thicknesses, through a composition of colored threads to achieve this haberdashery-inspired tartan pattern. The occasional appearance of hand-tied knots enhances the design's tactile richness and approachability.



LE2257 Lapis



LE2260 Cobblestone



NEW

## JAZZ

Inspired by the visual rhythm of classical guitar strings, the Jazz Series imbues the tonal qualities of a bygone era, yet leans toward the future.



LE4003 Arpeggio



LE4006 Tremolo



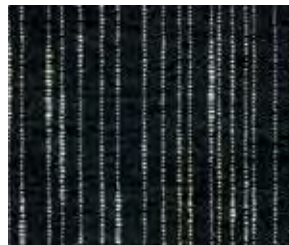
LE4021 Bridge



LE4060 Fusion



LE4045 Staccato



LE4087 Legato



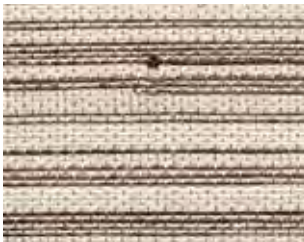


Design – Betsy Barmat Stires | Photo – Angie Seckinger Photography



## TISSAGE

Inspired by horsehair weaving traditions, layers of chestnut, grey, caramel and cocoa are woven for a rich texture. Perfect for dramatic shading statements.



LE1218 Cremello



LE1239 Dapple



LE1242 Arabian



LE1257 Halus



LE1255 Sorrel



LE1104 Tussah





## INTERWOVEN

Playing with the drama of light and dark, edge-cut reeds fade in and out of the neutral ground for a unique chiaroscuro effect.



LE1057 Seychelles



LE1083 Laut



LE1056 Camaca



LE1082 Wehi



LE1081 Tapu



LE1086 Aroha

## VINES

A weave of minutely-scaled natural banana fibers is accented by horizontal ribbons of luminous arrowroot. The intricate detailing makes this weave a delight for the senses.



LE1070 Lanta



LE1072 Surin



## VETIVER

The calming influence of the vetiver plant is felt in this weave. A textured ramie ground is artfully accented with bands of vetiver fibers.



LE1095 Gading



LE1096 Jahe



LE1098 Kayu



## CROSSHATCH

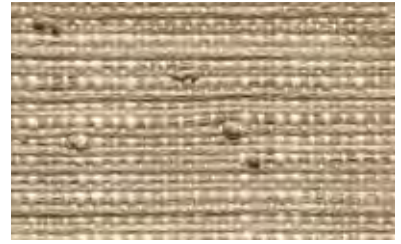
A chic interpretation of chambray fabric, this series is woven with palm fibers and Italian-inspired spun yarn that shows evidence of its innovative construction.



LE1606 Natural



LE1609 Wheat



LE1618 Flax



LE1639 Dust



LE1642 Tea



LE1660 Thunder





NEW

# WICKER

The legacy of hand-weaving wicker basketry and furnishings dates back to the ancient Mesopotamians. Inspired by this tradition, the Wicker Series offers a superior balance of woven textures and natural hues.



LE4106 Cane



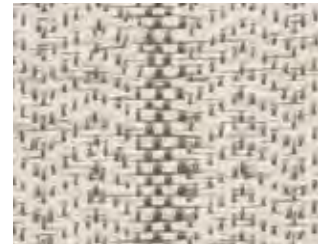
LE4136 Willow



LE4187 Rattan



LE2812 Tempo



LE2839 Encore



LE2912 Beat



LE2960 Pulse

## RHYTHM

Inspired by indigenous music tradition and its melodic essence, this artisanal textile series is handwoven using original foot-treadle looms. This intensive process results in patterned compositions that add a vibe of tribal heritage to an interior space.



LE2712 Chords



LE2739 Keys



LE2781 Notes









LE3303 Spirit



LE3312 Charisma



LE3309 Mystique



LE3315 Karma

## AURA

A complex design with a spirited sensibility, this weave of refined ramie and arrowroot creates a gentle and meditative atmosphere.



LE3387 Chakra **NEW**



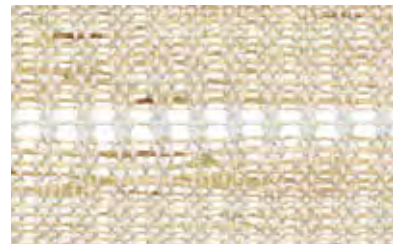


## MACRAME

A bohemian expression with free spirit, this uniquely woven natural textile is unassumingly elegant, offering a casual charm in its soft, muted color palette.



LE2303 Blanc



LE2306 Naturel



LE2336 Gris





## ILLUMINATION

A minimalist weave with subtle sheen for nonchalant luxury. Layered shadings of ivory and misty grey offer elegance and beauty.



LE1064 Madras



LE1284 Bishan



LE1292 Pasir



LE1301 Barege



LE1336 Samet

## TRESTLE

Lending a contemporary charm to any room, this weave captures attention with memorable stripes woven in tone-on-tone arrowroot.



LE1310 Railay





Designer – Tiffany Home Design | Photo – Gregory Dean

## INTERWOVEN II

This intricate open weave evokes contemplation and relaxation with its nuanced palm, ramie and soft yarn textures.



LE2503 Imperial



LE2521 Delmar



LE2515 Solana



LE2536 Clearwater







## INTERBRAID

Intricately handwoven ramie braids in pale grey and golden wheat delicately rise above a finely woven field. The unique horizontal pattern has a gentle rhythm which lends a natural restfulness and comfort to a room.



LE1906 Blonde



LE1903 Champagne



LE1939 Ash



LE1960 Heather



Price Group: 6 | Max Width: 180"  
Available Styles: Roman, Drapery

Shown: LE1960 Interbraid – Heather, Splitview™ Style Roman  
EW256 Geometry – Praca, Pillow



## THATCH

The beautiful texture of a thatched roof is the inspiration for this series, a medium-weight textile offering privacy and a casual point of view to an interior.



LE1703 Wrafton



LE1100 Cassimere



LE1805 Buckskin

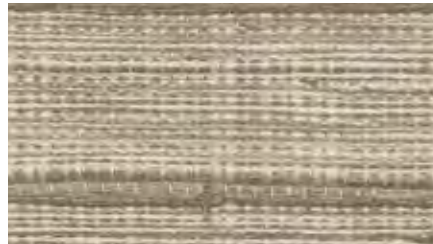


## MESA

Inspired by Southwestern weaving traditions, palm and ramie fibers in modern earth tones mingle with hand-placed water hyacinth strips for textural dimension. This tapestry-like design adds luxurious layers of warmth and artistic beauty to an interior.



LE2121 Adobe



LE2115 Pueblo





LE1123 Kocoma

## CABANA

Densely-woven contrasting fibers in subtle hues create a relaxed and approachable weave in sand tones that evoke a laid-back island vibe.



LE1125 Qamea



LE1130 Palm

# SHALE

Referencing the raw beauty of high desert geology, naturalistic color bands are stacked to achieve a striae effect. Arrowroot fibers in shades of desert sand combine for tonal beauty.



LE1506 Sand



LE1512 Dune



LE1530 Sage



LE1317 Berani



LE1169 Moorea



LE1132 Motu

# WOODSTOCK

Naturalistic designs in deep woodland colors of walnut, moss and straw. This handsome collection of weaves evokes a cozy mountain feeling.





## INTERLACE

Soliciting an interplay between light and fiber, this innovative warp-yarn structure and gauze-like ramie fibers candle incidental light in a graceful dramatic dance.



LE3209 Tawny



LE3215 Ember



LE1800 Bouclé



LE1300 Cire



LE1305 Atlas



LE1860 Armure

## HERITAGE

An update on a traditional grassweave design, the subtle sheen and dressy softness of arrowroot provides a seductive allure.

Price Group: 6 | Max Width: 180"  
Available Styles: Roman, Drapery, Top Treatment

Shown: LE1800 Heritage – Bouclé, Old Style Roman  
WL406 Sundance – Rockport, Wallcovering





## VINTAGE

Relax with a timeless grassweave pattern that blends effortlessly with contemporary and traditional interiors alike. The matte finish demonstrates a natural and organic nature.



LE1803 Parchment



LE1201 Frieze



LE1155 Cypress



LE1151 Chamois



LE1152 Marcello



LE1150 Leno



LE1203 Bistre



LE1154 Cretonne

## AUSTRIAN

This classic European shade design is reinterpreted in natural fibers to become a modern classic. The wide-warp treatment allows hand-knotted palm or arrowroot fibers to drape in an elegant scalloped pattern.



LE1300w Cire 5" warp

PG6



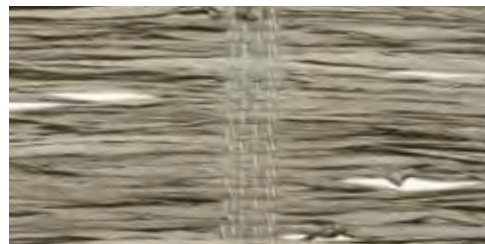
LE1151w Chamois 5" warp

PG5



LE1154w Crentone 5" warp

PG5



LE1150w Leno 5" warp

PG5

## HAVEN

Ramie, prized for its beauty and softness, is in full effect in this wondrously airy weave. A delicately neutral palette is offered from warm white to golden straw.



LE1200 Canera

PG6



LE1207 Tiaki

PG6



LE2409 Root



LE2439 Stem

## EARTHEN

Handwoven of vetiver, a hearty organic root fiber with a warm woody scent, this weave is grounded and earthy offering interiors a complex textural identity that is exotic, yet modern.



LE2487 Seed



## RUSTICA

Primitive and rustic, this textured weave features natural reeds alternating with a woven textile, giving these designs a pleasing heartiness to block sun and impart a comfortable feeling to any décor.



LE1253 Burrel



LE1250 Calico