

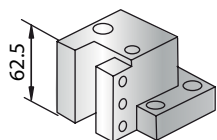
WT 100 / NTY3 / WY100

Nakamura-Tome

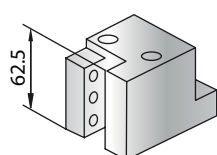


STATIC TOOLS

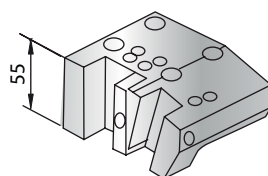
1) O.D. Cutting holder RH



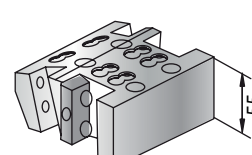
2) O.D. Cutting holder LH



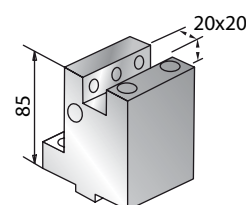
3) Double O.D. cutting holder



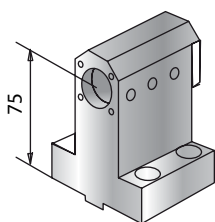
4) Quad O.D. cutting holder



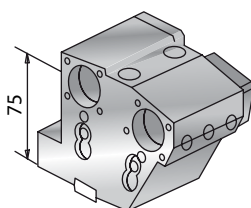
5) I.D. Cutting holder



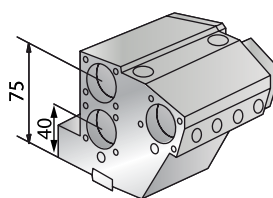
6) Boring bar holder



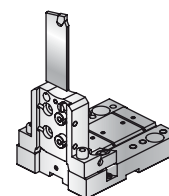
7) Double boring bar holder



8) Triple boring bar holder



9) Cut-off holder



10) Boring bar sleeve



Technical Data / Dati Tecnici

Code
Codice

1) O.D. CUTTING HOLDER RH 20x20mm
1) Portautensile per esterni destro 20x20mm

ANK.W10.OD20.R

2) O.D. CUTTING HOLDER LH 20x20mm
2) Portautensile per esterni sinistro 20x20mm

ANK.W10.OD20.L

3) DOUBLE O.D. HOLDER 20x20mm
3) Portautensili per esterni doppio 20x20mm

ANK.W10.OD20.2

4) QUAD O.D. CUTTING HOLDER 20x20mm
4) Portautensile esterno quadruplo 20x20mm

ANK.W10.OD20.Q

5) I.D. CUTTING HOLDER 20x20mm
5) Portautensile per interni 20x20mm

ANK.W10.ID20

Technical Data / Dati Tecnici

Code
Codice

6) BORING BAR HOLDER 25mm
6) Portabareno 25mm

ANK.W10.BB25

7) DOUBLE BORING BAR HOLDER 25mm
7) Portabareno doppio 25mm

ANK.W10.BB25.2

8) TRIPLE BORING BAR HOLDER \varnothing 20mm
8) Portabareno triplo \varnothing 20mm

ANK.W10.BB20.3

9) CUT-OFF HOLDER 26mm
9) Portalama 26mm

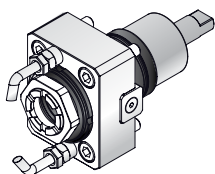
ANK.W10.CO26

10) BORING BAR SLEEVE
10) Bussole di riduzione

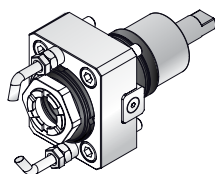
ANK.W10.RDX

LIVE TOOLS

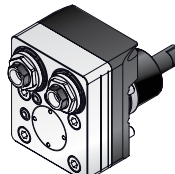
1A) Axial MA-2,5



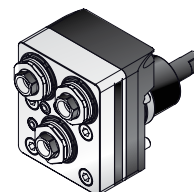
1B) Axial MA-2,5 C 70 Bar



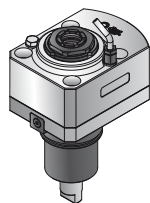
2) Axial MA-1,5 2U Front



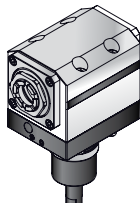
3) Axial MA-1,5 3U Front



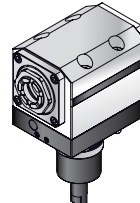
4) Axial MA-2,5S Speeder



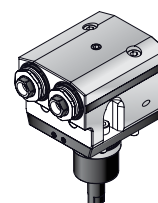
5A) Radial M90-2,5



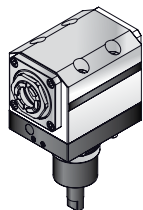
5B) Radial M90-2,5C 70 Bar



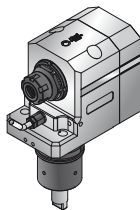
6) Radial M90-1,5 2U Front



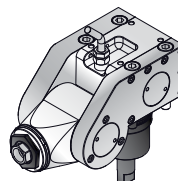
7) Radial M90-2,5 2U Oppos.



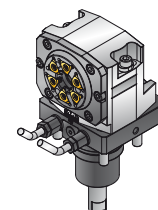
8) Radial M90-2,5S Speeder



9) Adjustable MCU-1,5



10) Thread Whirling



Technical Data / Dati Tecnici

Code Codice

1A) AXIAL MA-2,5
1A) Assiale MA-2,5

ANK.W10.0100

1B) AXIAL MA-2,5 C 70 Bar
1B) Assiale MA-2,5 C 70 Bar

ANK.W10.010C

2) AXIAL MA-1,5 2U FRONT
2) Assiale MA 1,5 2U Frontale

ANK.W10.0120

3) AXIAL MA-1,5 3U FRONT
3) Assiale MA 1,5 3U Frontale

ANK.W10.0130

4) AXIAL MA-2,5S SPEEDER
4) Assiale MA-2,5S speeder

ANK.W10.010S

5A) RADIAL M90-2,5
5A) Radiale M90-2,5

ANK.W10.0200

Technical Data / Dati Tecnici

Code Codice

5B) RADIAL M90 -2,5 C 70 Bar
5B) Radiale M90-2,5 C 70 Bar

ANK.W10. 020C

6) RADIAL M90-1,5 2U FRONT
6) Radiale M90-1,5 2U Frontale

ANK.W10. 0220

7) RADIAL M90-2,5 2U OPPOSITE
7) Radiale M90-2,5 2U Contrapposto

ANK.W10.0300

8) RADIAL M90-2,5 S SPEEDER
8) Radiale M90-2,5 S Speeder

ANK.W10.020S

9) ADJUSTABLE MCU-1,5
9) Orientabile MCU-1,5

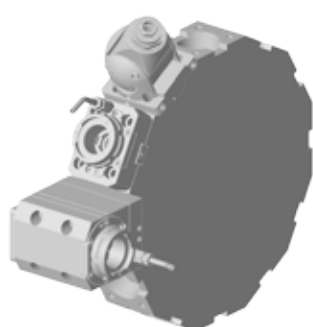
ANK.W10.0500

10) THREAD WHIRLING M90-2,5T
10) Turbofilettare M90-2,5T

ANK.W10.0800

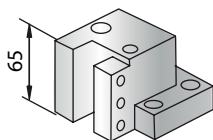
WT150 / WT250 / TC18 / WTW 150 / WTS 150 NTM 3 / SUPER NTJ - NTJX

Nakamura-Tome

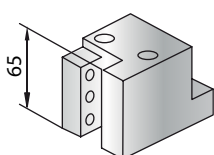


STATIC TOOLS

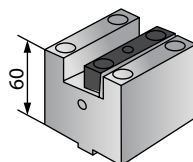
1) O.D. Cutting holder RH



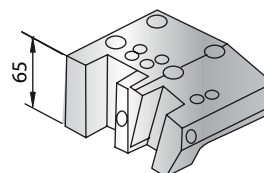
2) O.D. Cutting holder LH



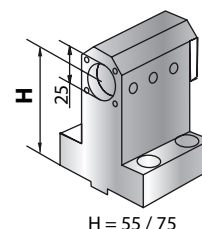
3) Double I.D. holder



4) Double O.D. holder

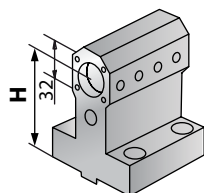


5A/B) Boring bar holder



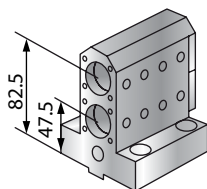
H = 55 / 75

6A/B) Boring bar holder

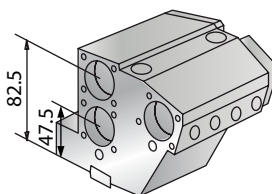


H = 55 / 70

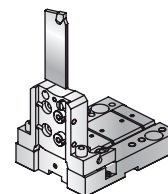
7) Double boring bar holder



8) Triple boring bar holder



9) Cut-off holder



10) Boring bar sleeve



Technical Data / Dati Tecnici

Code
Codice

Technical Data / Dati Tecnici

Code
Codice

1) O.D. CUTTING HOLDER RH 20x20mm 1) Portautensile per esterni destro 20x20mm	ANK.W15.OD20.R
2) O.D. CUTTING HOLDER LH 20x20mm 2) Portautensile per esterni sinistro 20x20mm	ANK.W15.OD20.L
3) DOUBLE I.D. HOLDER 20x20mm 3) Portautensile per interni doppio 20x20mm	ANK.W15.ID20.2
4) DOUBLE O.D. HOLDER 20x20mm 4) Portautensile per esterni doppio 20x20mm	ANK.W15.OD20.2
5A) BORING BAR HOLDER 25mm H=55 5A) Portabareno 25mm H=55	ANK. W15.BB25.55
5B) BORING BAR HOLDER 25mm H=75 5B) Portabareno 25mm H=75	ANK. W15.BB25.75

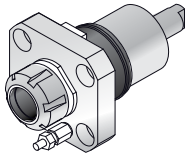
6A) BORING BAR HOLDER 32mm H=55 6A) Portabareno 32mm H=55	ANK. W15.BB32.55
6B) BORING BAR HOLDER 32mm H=70 6B) Portabareno 32mm H=70	ANK. W15.BB32.70
7) DOUBLE BORING BAR HOLDER 25mm 7) Portabareno doppio 25mm	ANK. W15.BB25.2
8) TRIPLE BORING BAR HOLDER 25mm 8) Portabareno triplo 25mm	ANK. W15.BB25.3
9) CUT OFF HOLDER 32mm 9) Portalama 32mm	ANK. W15.C032
10) BORING BAR SLEEVE 10) Bussole di riduzione	ANK. W15.RDX

WT150 / WT250 / TC18 / WTW 150 / WTS 150 NTM 3 / SUPER NTJ - NTJX

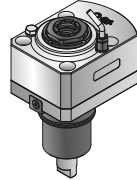
LIVE TOOLS

ER 25

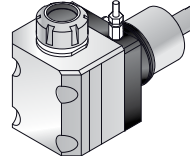
1A/B) Axial MA-2,5/2,5C



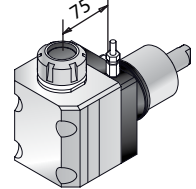
2) Axial MA-2,5S Speeder



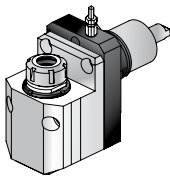
3A/B) Radial M90-2,5/2,5C



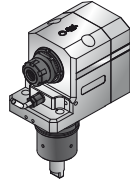
4A/B) Rad. M90-2,5/2,5C H75



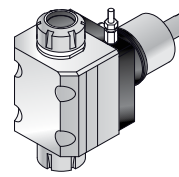
5A/B) Radial M90-2,5D/2,5DC



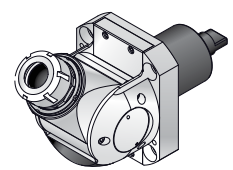
6) Radial M90-2,5 DS Speeder



7A/B) Radial M90-2,5 2U Opp.



8) Adjustable MCU-1,5



Technical Data / Dati Tecnici

Code Codice

1A) AXIAL MA-2,5
1A) Assiale MA-2,5

ANK.W15.0100

1B) AXIAL MA-2,5 C 70 Bar
1B) Assiale MA-2,5 C 70 Bar

ANK.W15.010C

2) AXIAL MA-2,5S SPEEDER
2) Assiale MA-2,5S Speeder

ANK.W15.010S

3A) RADIAL M90-2,5
3A) Radiale M90-2,5

ANK.W15.0200

3B) RADIAL M90-2,5 C 70 Bar
3B) Radiale M90-2,5 C 70 Bar

ANK.W15.020C

4A) RADIAL M90-2,5 H=75 mm
4A) Radiale M90-2,5 H=75 mm

ANK.W15.0200.75

4B) RADIAL M90-2,5 C 70 BAR H=75 mm
4B) Radiale M90-2,5 C 70 Bar H=75 mm

ANK.W15.020C.75

Technical Data / Dati Tecnici

Code Codice

5A) RADIAL OFFSET M90-2,5D
5A) Radiale Arretrato M90-2,5D

ANK.W15.0700

5B) RADIAL OFFSET M90-2,5DC 70 Bar
5B) Radiale Arretrato M90-2,5DC 70 Bar

ANK.W15.070C

6) RADIAL OFFSET M90-2,5DS SPEEDER
6) Radiale M90-2,5 DS Speeder

ANK.W15.070S

7A) RADIAL M90-2,5 2U OPPOSITE ER25/16
7A) Radiale M90-2,5 2U ER25/16 Contrapposto

ANK.W15.0300

7B) RADIAL M90-2,5 2U OPPOSITE ER25/25
7B) Radiale M90-2,5 2U ER25/25 Contrapposto

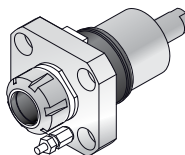
ANK.W15.0301

8) ADJUSTABLE MCU-1,5
8) Orientabile MCU-1,5

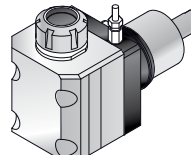
ANK.W15.0500

ER 32

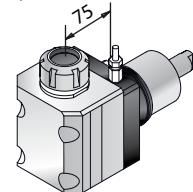
9A/B) Axial MA-3,5/3,5C 70 Bar



10A/B) Radial M90-3,5/3,5C 70 Bar



11A/B) Radial M90-3,5/3,5C H75



Technical Data / Dati Tecnici

Code Codice

9A) AXIAL MA-3,5
9A) Assiale MA-3,5

ANK.W15.0100.32

9B) AXIAL MA-3,5 C 70 Bar
9B) Assiale MA-3,5 C 70 Bar

ANK.W15.010C.32

10A) RADIAL M90-3,5
10A) Radiale M90-3,5

ANK.W15.0200.32

Technical Data / Dati Tecnici

Code Codice

10B) RADIAL M90-3,5 C 70 Bar
10B) Radiale M90-3,5 C 70 Bar

ANK.W15.020C.32

11A) RADIAL M90-3,5 H=75 mm
11A) Radiale M90-3,5 H=75 mm

ANK.W15.0200.32.75

11B) RADIAL M90-3,5C 70 Bar H=75 mm
11B) Radiale M90-3,5C 70 Bar H=75 mm

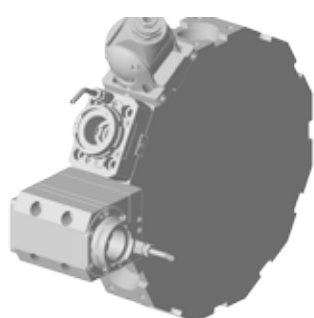
ANK.W15.020C.32.75



SmartChange
Ref. Pg 9 / Rif. pag 9

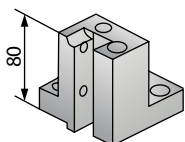
WT300

Nakamura-Tome

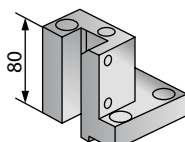


STATIC TOOLS

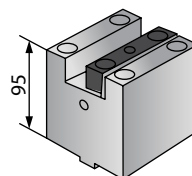
1) O.D. Cutting holder RH



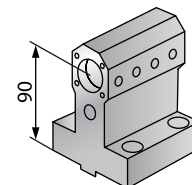
2) O.D. Cutting holder LH



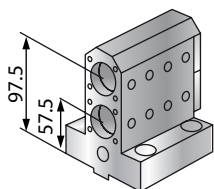
3) Double I.D. holder



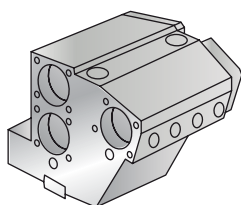
4) Boring bar holder



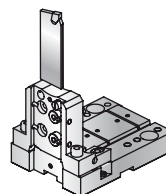
5) Double boring bar holder



6) Triple boring bar holder



7) Cut-off holder



8) Boring bar sleeve



Technical Data / Dati Tecnici

Code
Codice

Technical Data / Dati Tecnici

Code
Codice

1) O.D. CUTTING HOLDER RH 25X25mm

1) Portautensile per esterni destro 25x25mm

ANK.W30.OD25.R

5) DOUBLE BORING BAR HOLDER 25mm

5) Portabareno doppio 25mm

ANK.W30.BB25.2

2) O.D. CUTTING HOLDER LH 25X25mm

2) Portautensile per esterni sinistro 25x25mm

ANK.W30.OD25.L

6) TRIPLE BORING BAR HOLDER ø25mm

6) Portabareno triplo ø25mm

ANK.W30.BB25.3

3) DOUBLE I.D. HOLDER 25x25mm

3) Portautensile per interni doppio 25x25mm

ANK.W30.ID25.2

7) CUT-OFF HOLDER 32mm

7) Portalama 32mm

ANK.W30.C032

4) BORING BAR HOLDER 32mm

4) Portabareno 32mm

ANK.W30.BB32

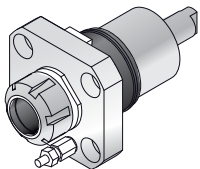
8) BORING BAR SLEEVE

8) Bussole di riduzione

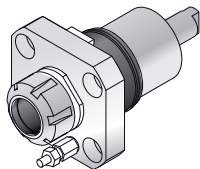
ANK.W30.RDX

LIVE TOOLS

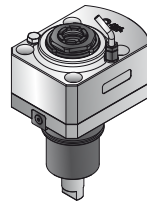
1A) Axial MA-3,5



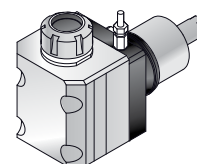
1B) Axial MA-3,5C 70 Bar



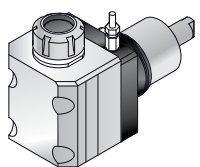
2) Axial MA-2,5 S Speeder



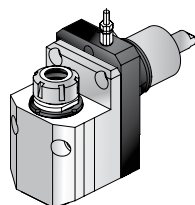
3A) Radial M90-3,5



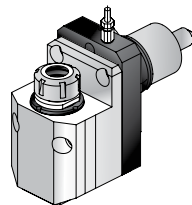
3B) Radial M90-3,5C 70 Bar



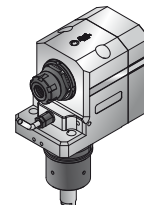
4A) Radial M90-3,5 D



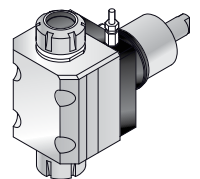
4B) Radial M90-3,5 DC



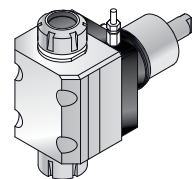
5) Radial M90-3,5DS Speeder



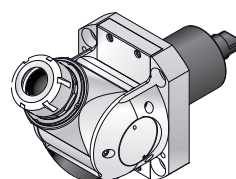
6A) Radial M90-3,5 2U 32/20



6B) Radial M90-3,5 2U 32/32



7) Adjustable MCU-1,5



Technical Data / Dati Tecnici

Code Codice

1A) AXIAL MA-3,5
1A) Assiale MA-3,5

ANK.W30.0100

1B) AXIAL MA-3,5 C 70 Bar
1B) Assiale MA-3,5 C 70 Bar

ANK.W30.010C

2) AXIAL MA-2,5 S SPEEDER
2) Assiale MA-2,5 S Speeder

ANK.W30.010S

3A) RADIAL M90- 3,5
3A) Radiale M90- 3,5

ANK.W30.0200

3B) RADIAL M90- 3,5 C 70 Bar
3B) Radiale M90- 3,5 C 70 Bar

ANK.W30.020C

4A) RADIAL M90- 3,5 D
4A) Radiale M90- 3,5 D

ANK.W30.0700

Technical Data / Dati Tecnici

Code Codice

4B) RADIAL M90- 3,5 DC
4B) Radiale M90- 3,5 DC

ANK.W30.070C

5) RADIAL M90-3,5 DS SPEEDER
5) Radiale M90-3,5 DS Speeder

ANK.W30.070S

6A) RADIAL M90-3,5 2U OPPOSITE ER 32/ER20
6A) Radiale M90-3,5 2U ER32/ER20 Contrapposto

ANK.W30.0300

6B) RADIAL M90-3,5 2U OPPOSITE ER 32/ER32
6B) Radiale M90-3,5 2U ER32/ER32 Contrapposto

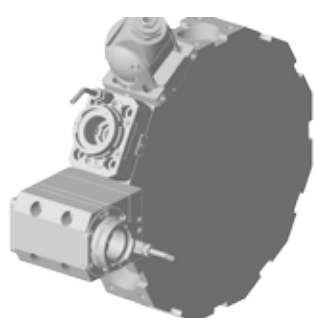
ANK.W30.0301

7) ADJUSTABLE MCU-1,5
7) Orientabile MCU-1,5

ANK.W30. 0500

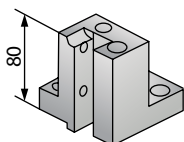
SUPERMILL WY250 - WT150 - SC200L NTY3 JUMBO

Nakamura-Tome

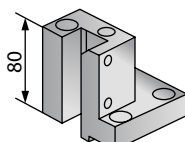


STATIC TOOLS

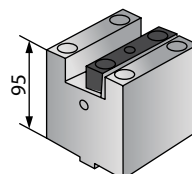
1) O.D. Cutting holder RH



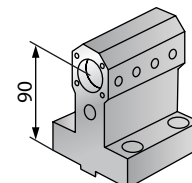
2) O.D. Cutting holder LH



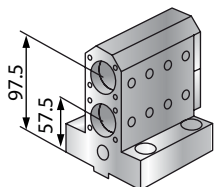
3) Double I.D. holder



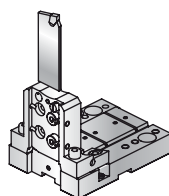
4) Boring bar holder



5) Double boring bar holder



6) Cut-off holder



7) Boring bar sleeve



Technical Data / Dati Tecnici

Code
Codice

1) O.D. CUTTING HOLDER RH 25X25mm
1) Portautensile per esterni destro 25x25mm

ANK.WT4.OD25.R

2) O.D. CUTTING HOLDER LH 25X25mm
2) Portautensile per esterni sinistro 25x25mm

ANK.WT4.OD25.L

3) DOUBLE I.D. HOLDER 25x25mm
3) Portautensile per interni doppio 25x25mm

ANK.WT4.ID25.2

4) BORING BAR HOLDER 32mm
4) Portabareno 32mm

ANK.WT4.BB32

Technical Data / Dati Tecnici

Code
Codice

5) DOUBLE BORING BAR HOLDER 25mm
5) Portabareno doppio 25mm

ANK.WT4.BB25.2

6) CUT-OFF HOLDER 32mm
6) Portalama 32mm

ANK.WT4.C032

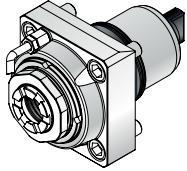
7) BORING BAR SLEEVE
7) Bussole di riduzione

ANK.WT4.RDX

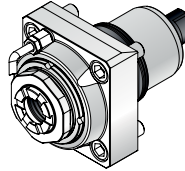
SUPERMILL WY250 - WT150 - SC200L NTY3 JUMBO

LIVE TOOLS

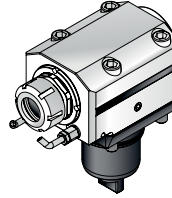
1A) Axial MA-3,5



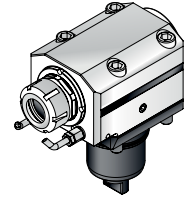
1B) Axial MA-3,5 C70 Bar



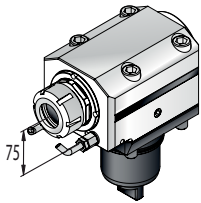
2A) Radial M90-3,5



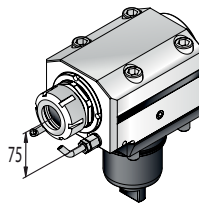
2B) Radial M90-3,5C 70 Bar



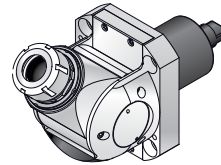
3A) Radial M90-3,5 H 75



3B) Radial M90-3,5C 70 Bar
H 75



4) Adjustable MCU-1,5



Technical Data / Dati Tecnici

Code Codice

1A) AXIAL MA-3,5
1A) Assiale MA-3,5

ANK.WT4.0100

1B) AXIAL MA-3,5 C 70 Bar
1B) Assiale MA-3,5 C 70 Bar

ANK.WT4.010C

2A) RADIAL M90- 3,5
2A) Radiale M90- 3,5

ANK.WT4.0200

2B) RADIAL M90- 3,5 C 70 Bar
2B) Radiale M90- 3,5 C 70 Bar

ANK.WT4.020C

Technical Data / Dati Tecnici

Code Codice

3A) RADIAL M90- 3,5 H=75 mm
3A) Radiale M90- 3,5 H=75 mm

ANK.WT4.0200.75

3B) RADIAL M90- 3,5 C 70 Bar H=75 mm
3B) Radiale M90- 3,5 C 70 Bar H=75 mm

ANK.WT4.020C.75

4) ADJUSTABLE MCU- 1,5
4) Orientabile MCU 1,5

ANK.WT4.0500