

# Coromant Capto™

**WTO**

Driven  
Precision  
Tools

*Higher Productivity*

ISO 9001



**FASTEST TIME WINS!**

Quick Change for highest Productivity

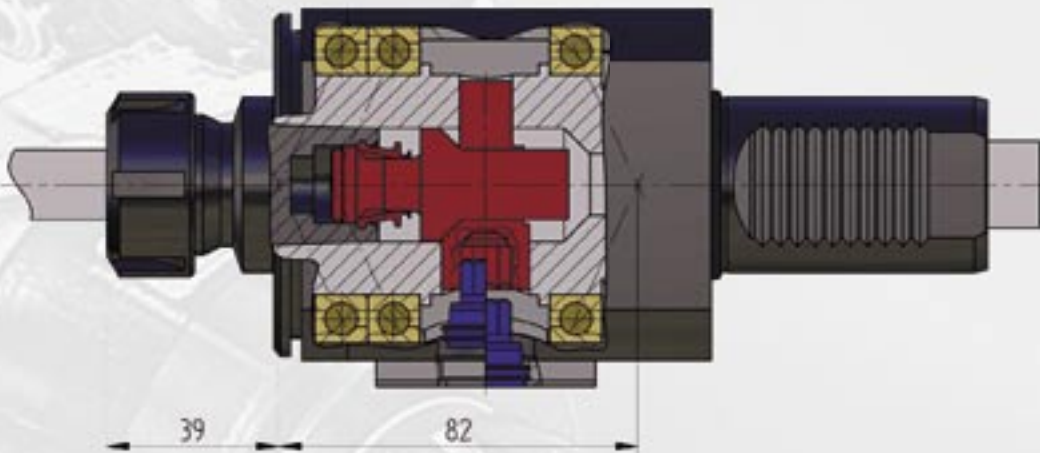
The design of driven precision tools with Coromant Capto™ has significant advantages when compared to other modular quick change systems. The tool clamping cam and drawbar is integrated in the driven tool housing allowing the front spindle bearings to be placed directly behind the quick change interface.

This is not possible on any other quick change system with tool clamping in front of the driven tool spindle.

Driven tools with Coromant Capto™ have:

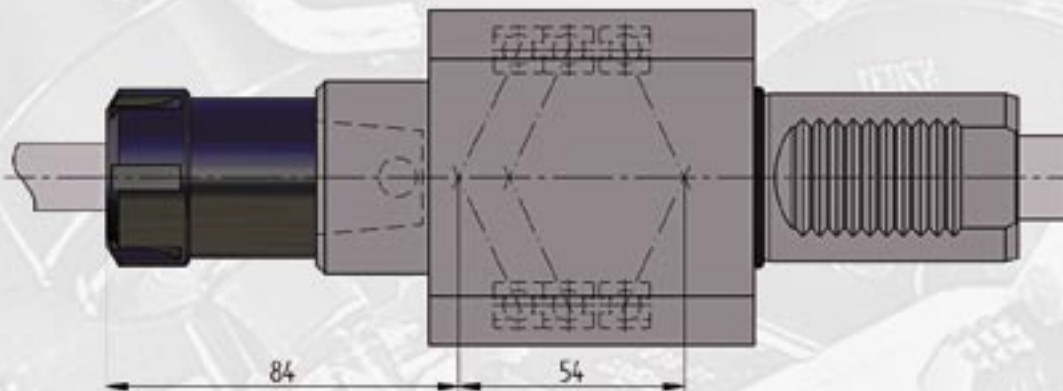
- + higher stability and rigidity especially in milling operations
- + higher cutting performance and better surface finish
- + longer cutting tool life

## Straight drill/milling unit with Coromant Capto™ C4



- + short extension from the front of the spindle bearings
- + long active distance between the spindle bearings

## Straight drill/milling unit with other modular quick change systems



- long extension from the front of the spindle bearings
- short active distance between the spindle bearings

## VDI turret



Page 7 - 8



Page 9



Page 10 - 11



Page 12 - 13



Page 14

## Daewoo, Nakamura



Page 15



Page 16



Page 17

## Mori Seiki SL/ZL



Page 18



Page 19



Page 20



Page 21



Page 22

## Mori Seiki NL



Page 23



Page 24



Page 25

## Cycle controlled lathes



Page 26



Page 27



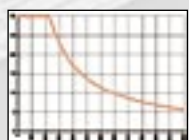
Page 28

## CDI – Coromant Disk Interface



Page 29 - 30

## Pressure diagram - internal coolant

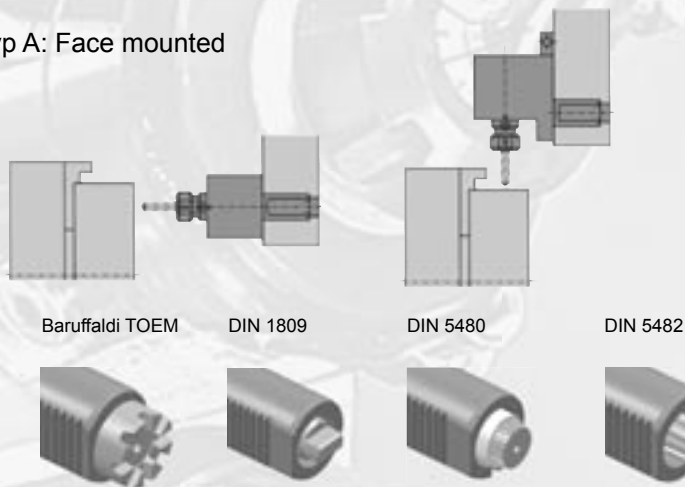


Page 31

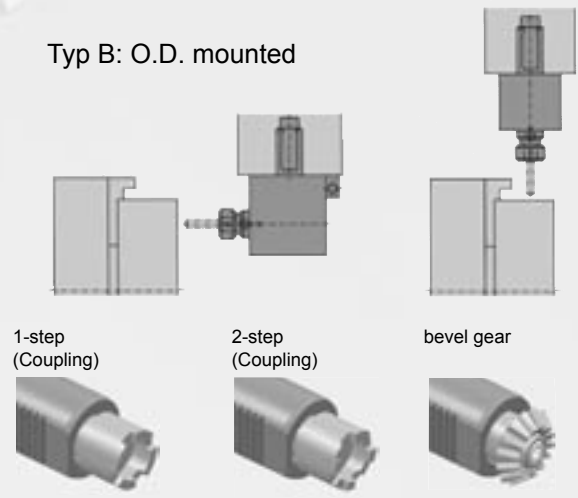
## Machine type listing • Turret specification

From the Machine Type listing below, find the turret specification for your machine.  
Determine the style of precision driven tool needed from the Program Overview page.  
Using the turret specification, select the suitable driven tool from the data sheets.

### Typ A: Face mounted



### Typ B: O.D. mounted



Maschine Type	Turret specification				Remarks
	VDI ∅D	Turret Manufacturer	Type	Drive coupling	
Benzinger TNI, TCM	25	Sauter	B	DIN 5480	
Boehring NG 180, NG 200	40	Sauter (L2=120)	B	DIN 5480	Upper turret: also L2=100 mm suitable
Cincinnati Hawk HTC-150M	30	Diplomatic	A	DIN 1809	
Cincinnati Hawk HTC-200M, HTC-250M	40	Diplomatic	A	DIN 1809	
Colchester Storm II 120M, Tornado 120M	30	Sauter	A	DIN 5482	
Colchester Storm II 220M, Tornado 220M	40	Sauter	A	DIN 5482	
Doosan S 310M, S 310SM, S 310SLM, S 240LM	30	Sauter (L2=85)	B	DIN 5480	
Doosan S 390LM	40	Sauter	A	DIN 5482	
Doosan Z 280TM	40	Sauter (L2=100)	B	DIN 5480	
Doosan Z 290M, Z 290SM, Z 290SMY	30	Sauter (L2=85)	B	DIN 5480	
Doosan Z 340SM	30	Sauter (L2=100)	B	DIN 5480	
Doosan V 420M, V420TM, V 550M, V 550TM	50	Sauter	A	DIN 5480	
Doosan V 850M, V850TM	60	Doosan	B	DIN 5480	
Emag VSC 160, VSC 200, VSC 250, VL2, VL3, VL5	40	Emag	B	DIN 1809	
Emag VSC 315, VSC 400, VSC 500	50	Emag	B	DIN 1809	
Emco E 65 TCM	30	Sauter	A	DIN 5480	
Emco ET 345 II	30	Diplomatic	A	DIN 1809	Old version
	30	Diplomatic	A	DIN 5480	New version since 2004
Emco ET 365 MC	30	Emco HT-665	B	DIN 5480	
Emco ET 500 MC	40	Diplomatic	A	DIN 1809	Without sub spindle
Emco HT 645, HT 665	30	Emco HT-665	B	DIN 5480	
Emco HT 690	40	Emco HT-690	B	DIN 5480	
Emco ET 700 MC	50	Diplomatic	A	DIN 1809	
Emco ET 900 MC	60	Diplomatic	A	DIN 1809	
Fortune VTurn 36CV, 46CV	50	Sauter	A	DIN 5482	
Fortune VTurn II 16(Y)CV, 20(Y)CV	30	Diplomatic	A	DIN 1809	
	30	Sauter	A	DIN 5480	
Fortune VTurn II 23CV, 26CV	40	Diplomatic	A	DIN 1809	
	40	Sauter	A	DIN 5480	
Fortune VTurn II 23BCV, 26BCV, 26Y(B)CV	40	Sauter (L2=100)	B	DIN 5480	VDI serration: right hand
Gildemeister CTV 200, CTV 250 linear	40	Sauter (L2=100)	B	DIN 5480	
Gildemeister CTX 210, 310	30	Sauter	A	DIN 5480	
Gildemeister CTX 320 linear	30	Sauter	A	DIN 5480	Without sub spindle
Gildemeister CTX 320 linear with sub spindle	30	Sauter (L2=100)	B	DIN 5480	
Gildemeister CTX 410, 420 linear	40	Sauter	A	DIN 5480	Without sub spindle
Gildemeister CTX 420 linear with sub spindle	40	Sauter (L2=100)	B	DIN 5480	VDI serration: right hand
Gildemeister CTX 510, 520 linear	40	Sauter	A	DIN 5480	Without sub spindle
Gildemeister CTX 620 linear	50	Sauter	A	DIN 5480	Without sub spindle
Gildemeister GMX 250, 300, 400, 500 linear	40	Sauter (L2=100)	B	DIN 5480	
Gildemeister Sprint 65	30	Sauter (L2=100)	B	DIN 5480	Only for new version since 2005
Gildemeister Twin 42	25	Sauter	B	DIN 5480	Frame size 1 – option = VDI 25
	30	Sauter (L2=100)	B	DIN 5480	Frame size 2 – standard = VDI 30
	40	Sauter (L2=100)	B	DIN 5480	Frame size 2 – option = VDI 40

Maschine Type	Turret specification				Remarks
	VDI ∅D	Turret Manufacturer	Type	Drive coupling	
Gildemeister Twin 50, 70	30	Sauter (L2=100)	B	DIN 5480	
Gildemeister Twin 65, 102	30 40	Sauter (L2=100) Sauter (L2=100)	B B	DIN 5480 DIN 5480	Frame size 2 – standard = VDI 30 Frame size 2 – option = VDI 40
Gildemeister Twin 500 linear	40	Sauter (L2=120)	B	DIN 5480	
Graziano GT 300	30	Sauter	A	DIN 5482	Now: CTX 300 Graziano
Graziano GT 300, GT 400 with sub spindle	30	Sauter (L2=85)	B	DIN 5480	Now: CTX 300, CTX 400 Graziano
Graziano GT 400, GT 500	40	Sauter	A	DIN 5482	Now: CTX 400, CTX 500 Graziano
Graziano GT 500 with sub spindle	40	Sauter (L2=100)	B	DIN 5480	Now: CTX 500 Graziano
Graziano GT 700	50	Sauter	A	DIN 5482	Now: CTX 700 Graziano
Hardinge Elite 6/42, 8/51	30	Sauter (L2=85)	B	DIN 5480	
Hardinge Quest LMC 42	25	Sauter	B	DIN 5480	
Hardinge Quest 6/42, 8/51, 10/65	30	Sauter (L2=100)	B	DIN 5480	
Hardinge Talent 6/45, 8/52	30	Sauter	A	DIN 5482	
Hardinge Talent 8/52A, 10/78	40	Sauter	A	DIN 5482	
Heyligenstaedt Heynumat 5	40	Sauter	A	DIN 5482	
Heyligenstaedt Heynumat 15	50	Sauter	A	DIN 5482	
Heyligenstaedt Heynumat 20, 21, 24, 25	60	Sauter	A	DIN 5482	
Index C45, C65	25	Index G200	B	1-step	
Index G60, G160, G200	25	Index G200	B	1-step	
Index G250, G300, G300 Flex	30	Index G300	B	1-step	
Index G400	40	Index G400	B	1-step	
Index MS32	25	Index G200	B	1-step	
Index MS52	30	Index G300	B	1-step	
Index MV200	25	Index G200	B	1-step	
Index V160, V200, V200 Tandem	25	Index G200	B	1-step	
Index V250	30	Index G300	B	1-step	
Index V250	30	Index G300	B	1-step	
Index V300	40	Index V300	B	1-step	
Magdeburger M110	30	Sauter	A	DIN 5482	
Magdeburger M120, M160S-4, M160U-2, M160U-4	40	Sauter	A	DIN 5482	
Magdeburger M160GS-4, M160GU-4	40	Sauter (L2=100)	B	DIN 5480	
Magdeburger M300	40	Sauter	A	DIN 5482	
Magdeburger M400S-4, M400U-2	50 40 60	Sauter Sauter Sauter	A A A	DIN 5482 DIN 5482 DIN 5482	Standard = VDI 50 Option = VDI 40, VDI 60
Magdeburger M400U-4, M500	50	Sauter	A	DIN 5482	
Magdeburger MV100	30	Sauter (L2=100)	B	DIN 5480	
Magdeburger MVT160U-4	40	Sauter (L2=100)	B	DIN 5480	
Mazak MP-610, MP-6100	40*	Mazak MP-6100	B	DIN 1809	
Mazak MP-620, MP-6200, MP-6200Y	40*	Mazak MP-6200	B	DIN 1809	12 stations turret
Mazak MP-6200Y (16 stations turret)	40*	Mazak MP-6100	B	DIN 1809	
Mazak MP-630, MP-6300	50*	Mazak MP-6300	B	DIN 1809	
Mazak QT Nexus 200M, 250M	40*	Mazak SQT-200M	B	DIN 1809	12 stations turret
Mazak QT Nexus 200MS, 250MS	40*	Mazak SQT-200MS	B	DIN 1809	12 stations turret, with sub spindle
Mazak QT Nexus 300M, 350M	50*	Mazak SQT-300M	B	DIN 1809	
Mazak QT Nexus 300MS, 350MS	50*	Mazak SQT-300MS	B	DIN 1809	
Mazak SQT-100M	40*	Mazak SQT-100M	B	DIN 1809	
Mazak SQT-100MS	40*	Mazak SQT-100MS	B	DIN 1809	With sub spindle
Mazak SQT-200M, SQT-250M	40*	Mazak SQT-200M	B	DIN 1809	12 stations turret
Mazak SQT-200MS, SQT-250MS	40*	Mazak SQT-200MS	B	DIN 1809	12 stations turret, with sub spindle
Mazak SQT-200M, SQT-250M (16 stations turret)	40*	Mazak SQT-100M	B	DIN 1809	
Mazak SQT-200MS, SQT-250MS (16 stations turret)	40*	Mazak SQT-100MS	B	DIN 1809	With sub spindle
Mazak SQT-28M, SQT-30M, SQT-300M	50*	Mazak SQT-300M	B	DIN 1809	
Mazak SQT-28MS, SQT-30MS, SQT-300MS	50*	Mazak SQT-300MS	B	DIN 1809	
Monforts DNC 3	30	Sauter (L2=100)	B	DIN 5480	
Monforts DNC 5, MHC 5	40	Sauter (L2=120)	B	DIN 5480	
Monforts MNC 500	40 40	Sauter Sauter (L2=120)	A B	DIN 5482 DIN 5480	Turret 1 Turret 2
Monforts MNC 1000	60 50	Sauter Sauter	A A	DIN 5482 DIN 5482	Turret 1 + 2 Turret 2 - Option
Monforts RNC 3, RNC 200, 300	30	Sauter	A	DIN 5482	
Monforts RNC 4, 5, RNC 400, 400Y, 500, 500Y, 600	40	Sauter	A	DIN 5482	
Monforts RNC 400 DuoTurn, 500 DuoTurn,	40	Sauter (L2=120)	B	DIN 5480	
Monforts RNC 7, RNC 700	50	Sauter	A	DIN 5482	
Monforts RNC 1000	60	Sauter	A	DIN 5482	

Maschine Type	Turret specification				Remarks
	VDI ∅D	Turret Manufacturer	Type	Drive coupling	
Mori Seiki MT-1500	30	Mori Seiki ZT1000Y	B	DIN 1809	VDI turret
Mori Seiki MT-2002, MT-2500	40	Mori Seiki ZT2500Y	B	DIN 1809	VDI turret
Mori Seiki ZT-1000Y, ZT-1500Y	30	Mori Seiki ZT1000Y	B	DIN 1809	VDI turret
Mori Seiki ZT-2500Y, ZT-2500MC	40	Mori Seiki ZT2500Y	B	DIN 1809	VDI turret
Niles N 10	30	Sauter	A	DIN 5482	Drive coupling: B15x12
	40	Sauter	A	DIN 5482	Drive coupling: B17x14
Niles N 20	40	Sauter	A	DIN 5482	Drive coupling: B17x14
	50	Sauter	A	DIN 5482	Drive coupling: B20x17
Niles N 30	50	Sauter	A	DIN 5482	Drive coupling: B20x17
Niles N 40, N50	60	Sauter	A	DIN 5482	Drive coupling: B25x22
Niles NF 20, NV 20	40	Sauter (L2=100)	B	DIN 5480	
Okuma LB 10II-M	30	Okuma LB 200-M	A	1-step	
Okuma LB 15II-M	40	Okuma LB 300-M	A	1-step	
Okuma LB 25II-M	40	Okuma LB 400-M	A	1-step	
Okuma LB 35II-M	50	Okuma LB 35II-M	A	2-step	Old version
	50	Okuma LU 35-M	A	1-step	New version
Okuma LB 45II-M	60	Okuma LU 45-M	A	1-step	
Okuma LB 200-M	30	Okuma LB 200-M	A	1-step	
Okuma LB 300-M	40	Okuma LB 300-M	A	1-step	
Okuma LB 300-MW	40	Okuma LT 300-M	B	1-step	Only for new version since 2005
Okuma LB 400-M	40	Okuma LB 400-M	A	1-step	
Okuma MacTurn 350	40	Okuma LT 300-M	B	1-step	
Okuma LT 10-M	30	Okuma LT 200-M	B	1-step	
Okuma LT 15-M	40	Okuma LT 300-M	B	1-step	
Okuma LT 25-M	40	Okuma LT 400-M	B	1-step	
Okuma LT 200-M	30	Okuma LT 200-M	B	1-step	
Okuma LT 300-M	40	Okuma LT 300-M	B	1-step	
Okuma LT 400-M	40	Okuma LT 400-M	B	1-step	
Okuma LU 15-M	40	Okuma LB 300-M	A	1-step	
Okuma LU 25-M	40	Okuma LB 400-M	A	1-step	
Okuma LU 35-M	50	Okuma LU 35-M	A	1-step	
Okuma LU 45-M	60	Okuma LU 45-M	A	1-step	
Okuma LU 300-M	40	Okuma LB 300-M	A	1-step	
Okuma LU 400-M	40	Okuma LB 400-M	A	1-step	
Okuma LVT 300-M	40	Okuma LVT 300-M	A	1-step	
Okuma LVT 400-M	40	Okuma LVT 400-M	A	1-step	
Spinner TC 52-MC, TC 65-MC	30	Sauter	A	DIN 5482	
Spinner TC 77-MC, TC 110-MC	50	Baruffaldi	A	TOEM 250	
Spinner TS 46-MC, TS 66L-MCt	30	Baruffaldi	A	TOEM 160	Without sub spindle
Spinner TS 66H-MC, TS77-MC	40	Baruffaldi	A	TOEM 200	Without sub spindle
Scherer VDZ 120, VDZ 120DS, VDZ 200	30	Sauter (L2=100)	B	DIN 5480	
	40	Sauter (L2=100)	B	DIN 5480	
Scherer VDZ 420, VDZ 420 DS	50	Sauter	B	DIN 5480	
Traub TNA 300	30	Sauter	A	DIN 5482	
Traub TNA 400	40	Sauter	A	DIN 5482	
Traub TNC 42 EG/EGY	25	Traub TNC 42	B	bevel gear	
Traub TNC 42 DG/DGY, TNC 65	30	Traub TNC 65	B	bevel gear	
Victor VTurn 36CV, 46CV	50	Sauter	A	DIN 5482	
Victor VTurn II 16(Y)CV, 20(Y)CV	30	Diplomatic	A	DIN 1809	
	30	Sauter	A	DIN 5480	
Victor VTurn II 23CV, 26CV	40	Diplomatic	A	DIN 1809	
	40	Sauter	A	DIN 5480	
Victor VTurn II 23BCV, 26BCV, 26Y(B)CV	40	Sauter (L2=100)	B	DIN 5480	VDI serration: right hand
Weiler DZ 45	30	Sauter	A	DIN 5482	
Weiler DZ 67 V1, V2	30	Sauter	A	DIN 5482	
Weiler DZ 67 V3	30	Sauter (L2=85)	B	DIN 5480	With sub spindle
WFL M30	40	Sauter	A	DIN 5482	Old version
	40	Sauter (L2=100)	B	DIN 5480	New version
WFL M40, M60	50	Sauter	A	DIN 5482	

\*no VDI standard

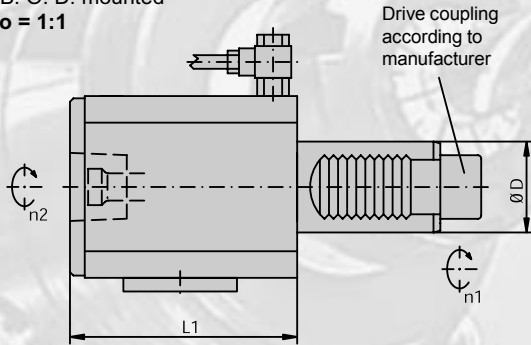
## Straight drill/milling unit with Coromant Capto™

Please select suitable turret specification from the Machine Type listing!

Typ A: Face mounted

Typ B: O. D. mounted

Ratio = 1:1



### 4101... (EC) with external coolant supply

Torque wrench must be used!

Item No.	Turret specification				Clamping System			Dimensions / Data				Drw. No.
	ØD	Turret manufacturer	Typ	Drive coupling	Size			L1	M Nm	Ratio n1:n2	343-830820...	
410103015-30	30	Baruffaldi	A	TOEM 160	C3			76	32	1:1	...N499	
410103016-30	30	Duplomatic	A	DIN 1809	C3			76	32	1:1	...N500	
410103007-30	30	Index G300	B	1-step	C3			76	32	1:1	...N130	
410103013-30	30	Okuma LB 200-M Okuma LT 200-M	B	1-step	C3			67	32	1:1	...N185	
410103025-30	30	Sauter	A	DIN 5480	C3			76	32	1:1	...N1119	
410103006-30	30	Sauter Emco HT-665	B B	DIN 5480	C3			76	32	1:1	...N22	
410103010-30	30	Sauter	A	DIN 5482	C3			76	32	1:1	...N321	
410104068-40	40	Baruffaldi	A	TOEM 200	C4			83	63	1:1	...N501	
410104022-40	40	Duplomatic	A	DIN 1809	C4			100	63	1:1	...N56	
410104095-40	40	Emag	B	DIN 1809	C4			83	63	1:1	...N855	
410104108-40	40	Index G400	B	1-step	C4			83	63	1:1	...N1117	
410104080-40	40	Index V300	B	1-step	C4			83	63	1:1	...N596	
410104064-40	40*	Mazak MP-6100	B	DIN 1809	C4			74	63	1:1	...N86	
410104069-40	40*	Mazak MP-6200	B	DIN 1809	C4			83	63	1:1	...N85	
410104072-40	40*	Mazak SQT-100M(S)	B	DIN 1809	C4			74	63	1:1	...N510	
410104071-40	40*	Mazak SQT-200M(S)	B	DIN 1809	C4			83	63	1:1	...N509	
410104085-40	40	Mori Seiki ZT2500Y	B	DIN1809	C4			83	63	1:1	...N641	
410104041-40	40	Okuma LB 300-M	A	1-step	C4			100	63	1:1	...N8	
410104053-40	40	Okuma LB 400-M	A	1-step	C4			100	63	1:1	...N118	
410104049-40	40	Okuma LT 300-M	B	1-step	C4			74	63	1:1	...N41	
410104061-40	40	Okuma LT 400-M	B	1-step	C4			83	63	1:1	...N288	
410104089-40	40	Okuma LVT 300-M	A	1-step	C4			83	63	1:1	...N755	
410104091-40	40	Okuma LVT 400-M	A	1-step	C4			100	63	1:1	...N757	
410104105-40	40	Sauter	A	DIN 5480	C4			83	63	1:1	...N1072	
410104062-40	40	Sauter Emco HT-690	B B	DIN 5480	C4			83	63	1:1	...N353	
410104019-40	40	Sauter	A	DIN 5482	C4			100	63	1:1	...N176	
410104026-50	50	Baruffaldi	A	TOEM 250	C4			100	63	1:1	...N502	
410104032-50	50	Emag	B	DIN 1809	C4			100	63	1:1	...N1139	
410105032-50	50	Duplomatic	A	DIN 1809	C5			110	100	1:1	...N311	
410105011-50	50	Okuma LB 35II-M	A	2-step	C5			110	100	1:1	...N429	
410105020-50	50	Okuma LU 35-M	A	1-step	C5			110	100	1:1	...N89	
410104030-50	50	Sauter	A	DIN 5480	C4			100	63	1:1	...N1125	
410105051-50	50	Sauter	A	DIN 5480	C5			110	100	1:1	...N1127	
410104031-50	50	Sauter	B	DIN 5480	C4			100	63	1:1	...N1126	
410105013-50	50	Sauter	A	DIN 5482	C5			110	100	1:1	...N92	
410105019-60	60	Duplomatic	A	DIN 1809	C5			110	100	1:1	...N60	
410106003-60	60	Duplomatic	A	DIN 1809	C6			160	200	1:1	...N503	
410105020-60	60	Okuma LU 45-M	A	1-step	C5			110	100	1:1	...N36	
410105013-60	60	Sauter	A	DIN 5482 B25x22	C5			110	100	1:1	...N371	
410106004-60	60	Sauter	A	DIN 5482 B25x22	C6			160	200	1:1	...N504	
410106005-60	60	Sauter	A	DIN 5482 B28x25	C6			160	200	1:1	...N505	

\*no VDI standard

## Straight drill/milling unit with Coromant Capto™

Please select suitable turret specification from the Machine Type listing!

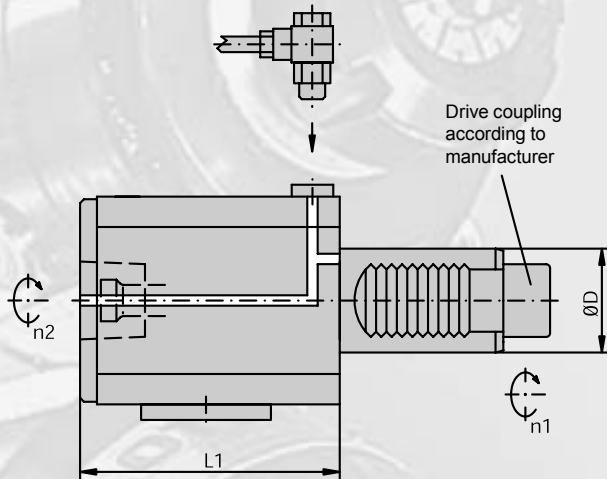
Typ A: Face mounted

Typ B: O. D. mounted

Ratio = 1:1

Max. coolant pressure = 435 PSI (30 bar)

(Check specified coolant pressure diagram!)



**4101...** (IC) with internal + external coolant supply

Torque wrench must be used!

Item No.	Turret specification				Clamping System			Dimensions / Data			Coolant Pressure diagram	Drw. No. 343-830820...
	ØD	Turret manufacturer	Typ	Drive coupling	Size			L1	M Nm	Ratio n1:n2		
410103017-30	30	Baruffaldi	A	TOEM 160	C3			76	32	1:1	D01001	...N508
410103008-30	30	Duplomatic	A	DIN 1809	C3			76	32	1:1	D01001	...N166
410103011-30	30	Index G300	B	1-step	C3			76	32	1:1	D01001	...N329
410103023-30	30	Sauter	A	DIN 5480	C3			76	32	1:1	D01001	...N964
410103012-30	30	Sauter Emco HT-665	B B	DIN 5480	C3			76	32	1:1	D01001	...N327
410103005-30	30	Sauter	A	DIN 5482	C3			76	32	1:1	D01001	...N17
410104066-40	40	Baruffaldi	A	TOEM 200	C4			83	63	1:1	D01007	...N153
410104047-40	40	Duplomatic	A	DIN 1809	C4			100	63	1:1	D01007	...N18
410104109-40	40	Index G400	B	1-step	C4			83	63	1:1	D01007	...N1118
410104097-40	40	Index V300	B	1-step	C4			83	63	1:1	D01007	...N889
410104070-40	40*	Mazak MP-6200	B	DIN 1809	C4			83	63	1:1	D01007	...N506
410104027-40	40*	Mazak SQT-200M(S)	B	DIN 1809	C4			83	63	1:1	D01007	...N161
410104086-40	40	Mori Seiki ZT2500Y	B	DIN 1809	C4			83	63	1:1	D01007	...N643
410104029-40	40	Okuma LB 300-M	A	1-step	C4			100	63	1:1	D01007	...N7
410104032-40	40	Okuma LB 400-M	A	1-step	C4			100	63	1:1	D01007	...N294
410104028-40	40	Okuma LT 400-M	B	1-step	C4			83	63	1:1	D01007	...N129
410104090-40	40	Okuma LVT 300-M	A	1-step	C4			83	63	1:1	D01007	...N756
410104092-40	40	Okuma LVT 400-M	A	1-step	C4			100	63	1:1	D01007	...N758
410104099-40	40	Sauter	A	DIN 5480	C4			83	63	1:1	D01007	...N969
410104033-40	40	Sauter Emco HT-690	B B	DIN 5480	C4			83	63	1:1	D01007	...N282
410104013-40	40	Sauter	A	DIN 5482	C4			100	63	1:1	D01007	...N102
410104003-50	50	Baruffaldi	A	TOEM 250	C4			100	63	1:1	D01007	...N421
410105012-50	50	Duplomatic	A	DIN 1809	C5			110	100	1:1	D01007	...N103
410105007-50	50	Okuma LB 35II-M	A	2-step	C5			110	100	1:1	D01007	...N109
410105022-50	50	Okuma LU 35-M	A	1-step	C5			110	100	1:1	D01007	...N427
410104000-50	50	Sauter	A	DIN 5480	C4			100	63	1:1	D01007	...N652
410105048-50	50	Sauter	A	DIN 5480	C5			110	100	1:1	D01007	...N978
410104001-50	50	Sauter	B	DIN 5480	C4			100	63	1:1	D01007	...N653
410105016-50	50	Sauter	A	DIN 5482	C5			110	100	1:1	D01007	...N95
410105025-60	60	Duplomatic	A	DIN 1809	C5			110	100	1:1	D01007	...N380
410106006-60	60	Duplomatic	A	DIN 1809	C6			160	200	1:1	D01000	...N507
410105016-60	60	Okuma LU 45-M	A	1-step	C5			110	100	1:1	D01007	...N234
410105017-60	60	Sauter	A	DIN 5482 B25x22	C5			110	100	1:1	D01007	...N42
410106001-60	60	Sauter	A	DIN 5482 B25x22	C6			160	200	1:1	D01000	...N355
410106000-60	60	Sauter	A	DIN 5482 B28x25	C6			160	200	1:1	D01000	...N163

\*no VDI standard



## Straight offset drill/milling unit with Coromant Capto™ - HIGH PRESSURE -

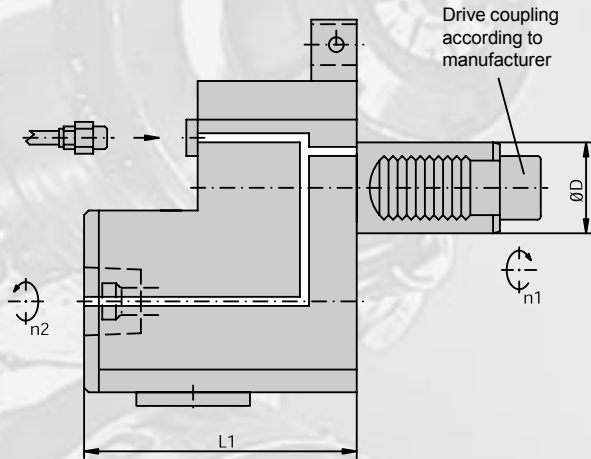
Please select suitable turret specification from the Machine Type listing!

Typ A: Face mounted

Typ B: O. D. mounted

Ratio = 1:1

Max. coolant pressure = 1160 PSI (80 bar)



### 4101... (IC - HP) with internal + external coolant supply

Torque wrench must be used!

Item No.	Turret specification				Clamping System			Dimensions / Data				Coolant	Drw. No.
	ØD	Turret manufacturer	Typ	Drive coupling	Size			L1	E	M Nm	Ratio n1:n2	Pressure diagram	343-830820...
410103026-30	30	Sauter	A	DIN 5480	C3			86	50	32	1:1	D01013	...N1129
410103027-30	30	Sauter	B	DIN 5480	C3			86	50	32	1:1	D01013	...N1130
410104074-40	40	Baruffaldi	A	TOEM 200	C4			120	50	63	1:1	D01013	...N517
410104073-40	40	Duplomatic	A	DIN 1809	C4			120	50	63	1:1	D01013	...N530
410104037-40	40	Okuma LB 300-M	A	1-step	C4			120	50	63	1:1	D01013	...N222
410104075-40	40	Okuma LB 400-M	A	1-step	C4			120	50	63	1:1	D01013	...N518
410104100-40	40	Sauter	A	DIN 5480	C4			120	50	63	1:1	D01013	...N971
410104076-40	40	Sauter	B	DIN 5480	C4			120	50	63	1:1	D01013	...N521
410104077-40	40	Sauter	A	DIN 5482	C4			120	50	63	1:1	D01013	...N522
410105040-50	50	Baruffaldi	A	TOEM 250	C5			160	75	100	1:1	D01013	...N101
410105042-50	50	Duplomatic	A	DIN 1809	C5			160	75	100	1:1	D01013	...N523
410105017-50	50*	Mazak MP-6300	B	DIN 1809	C5			115	75	100	1:1	D01013	...N328
410105041-50	50*	Mazak SQT-300M(S)	B	DIN 1809	C5			130	75	100	1:1	D01013	...N520
410105038-50	50	Okuma LB 35II-M	A	2-step	C5			160	75	100	1:1	D01013	...N432
410105043-50	50	Okuma LU 35-M	A	1-step	C5			160	75	100	1:1	D01013	...N524
410105052-50	50	Sauter	A	DIN 5480	C5			160	75	100	1:1	D01013	...N1128
410105044-50	50	Sauter	A	DIN 5482	C5			160	75	100	1:1	D01013	...N525
410105032-60	60	Duplomatic	A	DIN 1809	C5			160	75	100	1:1	D01013	...N527
410106007-60	60	Duplomatic	A	DIN 1809	C6			175	75	200	1:1	D01013	...N519
410105031-60	60	Okuma LU 45-M	A	1-step	C5			160	75	100	1:1	D01013	...N526
410105030-60	60	Sauter	A	DIN 5482 B25x22	C5			160	75	100	1:1	D01013	...N516
410106008-60	60	Sauter	A	DIN 5482 B25x22	C6			175	75	200	1:1	D01013	...N528
410106009-60	60	Sauter	A	DIN 5482 B28x25	C6			175	75	200	1:1	D01013	...N529

### 4101... (EC) with external coolant supply only

Torque wrench must be used!

Item No.	Turret specification				Clamping System			Dimensions / Data				Drw. No.
	ØD	Turret manufacturer	Typ	Drive coupling	Size			L1	E	M Nm	Ratio n1:n2	343-830820...
410105003-50	50*	Mazak MP-6300	B	DIN 1809	C5			115	75	100	1:1	...N456
410105055-50	50*	Mazak SQT-300M(S)	B	DIN 1809	C5			130	75	100	1:1	...N1285

\*no VDI standard

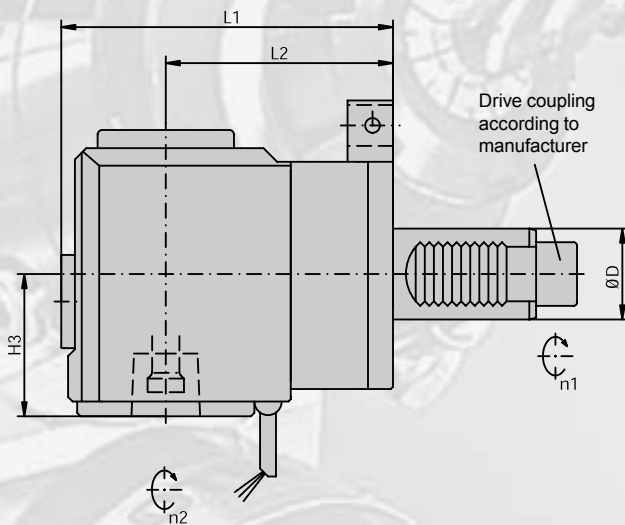
## Right angle drill/milling unit with Coromant Capto™

Please select suitable turret specification from the Machine Type listing!

Typ A: Face mounted

Typ B: O. D. mounted

Ratio = 1:1



### 4105... (EC) with external coolant supply

Torque wrench must be used!

Item No.	Turret specification				Clamping System			Dimensions / Data					Drw. No.
	ØD	Turret manufacturer	Typ	Drive coupling	Size			L1	L2	H3	M Nm	Ratio n1:n2	
410503000-25	25	Index G200	B	1-step	C3			105	70	45	20	1:1	343-830820... ...N433
410503006-25	25	Traub TNC 42	B	Kegelrad	C3			100	65	45	20	1:1	...N1133
410503051-30	30	Emco HT-665	B	DIN 5480	C3			135	100	45	32	1:1	...N1168
410503009-30	30	Index G300	B	1-step	C3			125	90	45	32	1:1	...N131
410503047-30	30	Okuma LT 200-M	B	1-step	C3			125	90	45	32	1:1	...N1135
410503013-30	30	Sauter (L2=85)	B	DIN 5480	C3			120	85	45	32	1:1	...N378
410503016-30	30	Sauter (L2=100)	B	DIN 5480	C3			135	100	45	32	1:1	...N23
410503033-30	30	Mori Seiki ZT1000Y	B	DIN 1809	C3			100	65	45	32	1:1	...N730
410503036-30	30	Traub TNC 65	B	Kegelrad	C3			110	75	45	32	1:1	...N720
410504117-40	40	Emco HT-690	B	DIN 5480	C4			146	100	60	63	1:1	...N696
410504100-40	40	Index G400	B	1-step	C4			156	110	60	63	1:1	...N604
410504176-40	40	Index V300	B	1-step	C4			129	90	60	63	1:1	...N1166
410504090-40	40*	Mazak MP-6100	B	DIN 1809	C4			154	115	60	63	1:1	...N87
410504089-40	40*	Mazak MP-6200	B	DIN 1809	C4			169	130	60	63	1:1	...N4
410504088-40	40*	Mazak SQT-100M(S)	B	DIN 1809	C4			139	100	60	63	1:1	...N511
410504087-40	40*	Mazak SQT-200M(S)	B	DIN 1809	C4			169	130	60	63	1:1	...N322
410504108-40	40	Mori Seiki ZT2500Y	B	DIN 1809	C4			156	110	60	63	1:1	...N642
410504064-40	40	Okuma LT 300-M	B	1-step	C4			136	90	60	63	1:1	...N40
410504060-40	40	Okuma LT 400-M	B	1-step	C4			146	100	60	63	1:1	...N58
410504135-40	40	Okuma LVT 300-M	A	1-step	C4			116	70	60	63	1:1	...N762
410504137-40	40	Okuma LVT 400-M	A	1-step	C4			116	70	60	63	1:1	...N764
410504121-40	40	Sauter (L2=100)	B	DIN 5480	C4			146	100	60	63	1:1	...N722
410504122-40	40	Sauter (L2=120)	B	DIN 5480	C4			159	120	60	63	1:1	...N723
410505074-50	50*	Mazak MP-6300	B	DIN 1809	C5			224	175	86	100	1:1	...N928
410505087-50	50*	Mazak SQT-300M(S)	B	DIN 1809	C5			209	160	86	100	1:1	...N1131
410504052-50	50	Sauter	B	DIN 5480	C4			156	110	60	63	1:1	...N1108
410505046-60	60	Doosan	B	DIN 5480	C5			174	125	86	100	1:1	...N1140

\*no VDI standard

## Right angle drill/milling unit with Coromant Capto™ - HIGH PRESSURE -

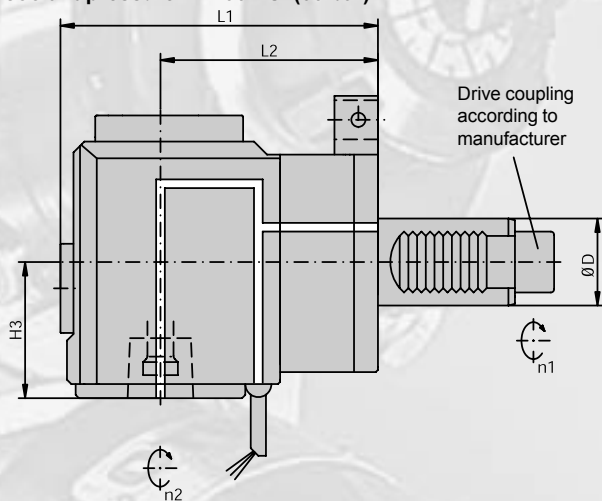
Please select suitable turret specification from the Machine Type listing!

Typ A: Face mounted

Typ B: O. D. mounted

Ratio = 1:1

Max. coolant pressure = 1100 PSI (80 bar)



**4105...** (IC - HP) with internal + external coolant supply

Torque wrench must be used!

Item No.	Turret specification				Clamping System			Dimensions / Data					Coolant Pressure diagram	Drw. No.
	ØD	Turret manufacturer	Typ	Drive coupling	Size			L1	L2	H3	M Nm	Ratio n1:n2		
410503001-25	25	Index G200	B	1-step	C3			105	70	45	20	1:1	D01013	343-830820...N434
410503007-25	25	Traub TNC 42	B	Kegelrad	C3			100	65	45	20	1:1	D01013	...N1134
410503052-30	30	Emco HT-665	B	DIN 5480	C3			135	100	45	32	1:1	D01013	...N1169
410503012-30	30	Index G300	B	1-step	C3			125	90	45	32	1:1	D01013	...N330
410503048-30	30	Okuma LT 200-M	B	1-step	C3			125	90	45	32	1:1	D01013	...N1136
410503017-30	30	Sauter (L2=85)	B	DIN 5480	C3			120	85	45	32	1:1	D01013	...N995
410503028-30	30	Sauter (L2=100)	B	DIN 5480	C3			135	100	45	32	1:1	D01013	...N346
410503032-30	30	Mori Seiki ZT1000Y	B	DIN 1809	C3			100	65	45	32	1:1	D01013	...N731
410503046-30	30	Traub TNC 65	B	Kegelrad	C3			110	75	45	32	1:1	D01013	...N1123
410504118-40	40	Emco HT-690	B	DIN 5480	C4			146	100	60	63	1:1	D01013	...N697
410504101-40	40	Index G400	B	1-step	C4			156	110	60	63	1:1	D01013	...N605
410504177-40	40	Index V300	B	1-step	C4			129	90	60	63	1:1	D01013	...N1167
410504091-40	40*	Mazak MP-6100	B	DIN 1809	C4			154	115	60	63	1:1	D01013	...N513
410504092-40	40*	Mazak MP-6200	B	DIN 1809	C4			169	130	60	63	1:1	D01013	...N514
410504079-40	40*	Mazak SQT-100M(S)	B	DIN 1809	C4			139	100	60	63	1:1	D01013	...N323
410504042-40	40*	Mazak SQT-200M(S)	B	DIN 1809	C4			169	130	60	63	1:1	D01013	...N51
410504109-40	40	Mori Seiki ZT2500Y	B	DIN 1809	C4			156	110	60	63	1:1	D01013	...N644
410504082-40	40	Okuma LT 300-M	B	1-step	C4			136	90	60	63	1:1	D01013	...N411
410504031-40	40	Okuma LT 400-M	B	1-step	C4			146	100	60	63	1:1	D01013	...N250
410504136-40	40	Okuma LVT 300-M	A	1-step	C4			116	70	60	63	1:1	D01013	...N763
410504138-40	40	Okuma LVT 400-M	A	1-step	C4			116	70	60	63	1:1	D01013	...N765
410504125-40	40	Sauter (L2=100)	B	DIN 5480	C4			146	100	60	63	1:1	D01013	...N726
410504126-40	40	Sauter (L2=120)	B	DIN 5480	C4			159	120	60	63	1:1	D01013	...N727
410505075-50	50*	Mazak MP-6300	B	DIN 1809	C5			224	175	86	100	1:1	D01013	...N929
410505088-50	50*	Mazak SQT-300M(S)	B	DIN 1809	C5			209	160	86	100	1:1	D01013	...N1132
410504053-50	50	Sauter	B	DIN 5480	C4			156	110	60	63	1:1	D01013	...N1109
410505044-60	60	Doosan	B	DIN 5480	C5			174	125	86	100	1:1	D01013	...N812

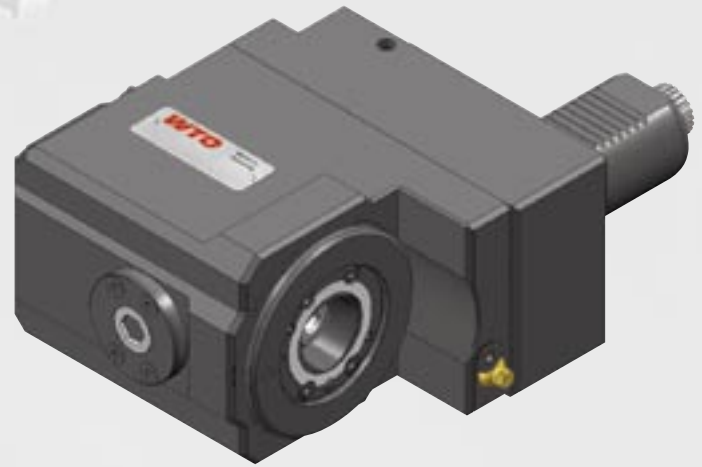
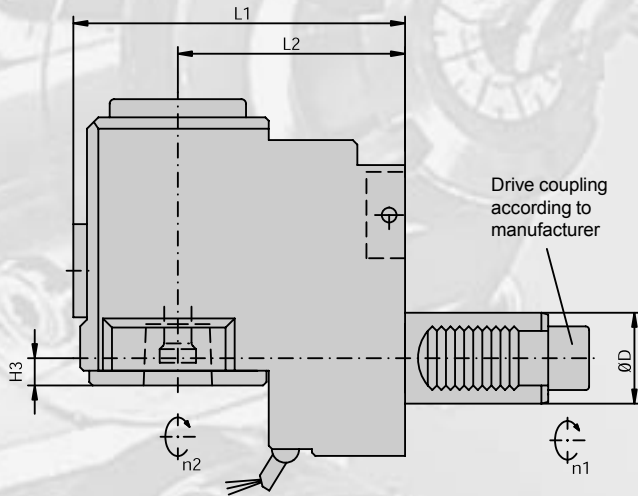
\*no VDI standard

## Right angle back set drill/milling unit with Coromant Capto™

Please select suitable turret specification from the Machine Type listing!

Typ A: Face mounted  
Typ B: O. D. mounted

Ratio = 1:1



### 4105... (EC) with external coolant supply

Torque wrench must be used!

Item No.	Turret specification				Clamping System			Dimensions / Data					Drw. No.
	∅D	Turret manufacturer	Typ	Drive coupling	Size			L1	L2	H3	M Nm	Ratio n1:n2	
410503021-30	30	Baruffaldi	A	TOEM 160	C3			120	85	3	32	1:1	343-830820... ...N531
410503022-30	30	Diplomatic	A	DIN 1809	C3			120	85	3	32	1:1	...N532
410503025-30	30	Okuma LB 200-M	A	1-step	C3			120	85	3	32	1:1	...N2
410503034-30	30	Sauter	A	DIN 5480	C3			120	85	3	32	1:1	...N732
410503008-30	30	Sauter	A	DIN 5482	C3			120	85	3	32	1:1	...N108
410504093-40	40	Baruffaldi	A	TOEM 200	C4			146	100	10	63	1:1	...N533
410504038-40	40	Diplomatic	A	DIN 1809	C4			146	100	10	63	1:1	...N57
410504154-40	40	Emag	B	DIN 1809	C4			136	90	10	63	1:1	...N857
410504041-40	40	Okuma LB 300-M	A	1-step	C4			146	100	10	63	1:1	...N10
410504065-40	40	Okuma LB 400-M	A	1-step	C4			146	100	10	63	1:1	...N119
410504129-40	40	Sauter	A	DIN 5480	C4			146	100	10	63	1:1	...N719
410504062-40	40	Sauter	A	DIN 5482	C4			146	100	10	63	1:1	...N68
410504003-50	50	Baruffaldi	A	TOEM 250	C4			156	110	10	63	1:1	...N422
410505062-50	50	Diplomatic	A	DIN 1809	C5			183	124	35	100	1:1	...N534
410505052-50	50	Diplomatic	A	DIN 1809	C5			183	124	-25	100	1:1	...N342
410504055-50	50	Emag	B	DIN 1809	C4			136	90	10	63	1:1	...N1164
410505066-50	50	Okuma LB 35II-M	A	2-step	C5			183	124	35	100	1:1	...N547
410505028-50	50	Okuma LB 35II-M	A	2-step	C5			188	129	-25	100	1:1	...N430
410505067-50	50	Okuma LU 35-M	A	1-step	C5			183	124	35	100	1:1	...N548
410505037-50	50	Okuma LU 35-M	A	1-step	C5			188	129	-25	100	1:1	...N90
410504054-50	50	Sauter	A	DIN 5480	C4			156	110	10	63	1:1	...N1137
410505089-50	50	Sauter	A	DIN 5480	C5			183	124	35	100	1:1	...N1138
410505050-50	50	Sauter	A	DIN 5482	C5			183	124	35	100	1:1	...N246
410505018-50	50	Sauter	A	DIN 5482	C5			183	124	-25	100	1:1	...N275
410505020-60	60	Diplomatic	A	DIN 1809	C5			183	124	35	100	1:1	...N61
410505034-60	60	Diplomatic	A	DIN 1809	C5			183	124	-25	100	1:1	...N535
410506003-60	60	Diplomatic	A	DIN 1809	C6			226	144	5	200	1:1	...N409
410505036-60	60	Okuma LU 45-M	A	1-step	C5			183	124	35	100	1:1	...N540
410505021-60	60	Okuma LU 45-M	A	1-step	C5			183	124	-25	100	1:1	...N37
410505014-60	60	Sauter	A	DIN 5482 B25x22	C5			183	124	35	100	1:1	...N463
410505024-60	60	Sauter	A	DIN 5482 B25x22	C5			183	124	-25	100	1:1	...N192
410506006-60	60	Sauter	A	DIN 5482 B25x22	C6			226	144	5	200	1:1	...N545
410506000-60	60	Sauter	A	DIN 5482 B28x25	C6			226	144	5	200	1:1	...N165

\*no VDI standard

H3=3, H3=5, H3=10, H3=35 : Coromant Capto™ in front of VDI center line

H3=-25 : Coromant Capto™ behind VDI center line

## Right angle back set drill/milling unit with Coromant Capto™ - HIGH PRESSURE -

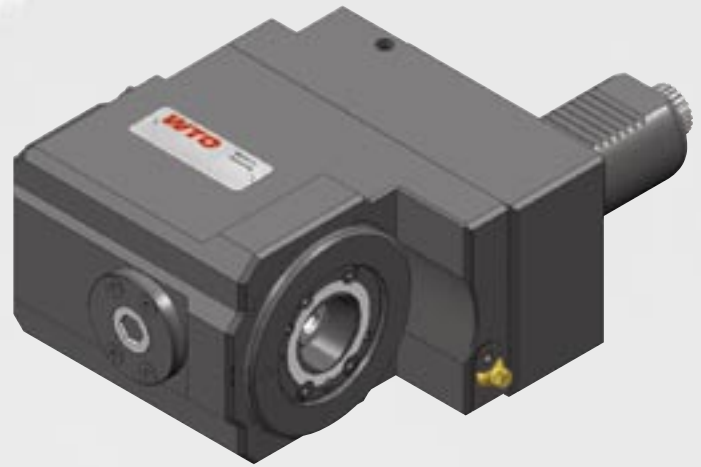
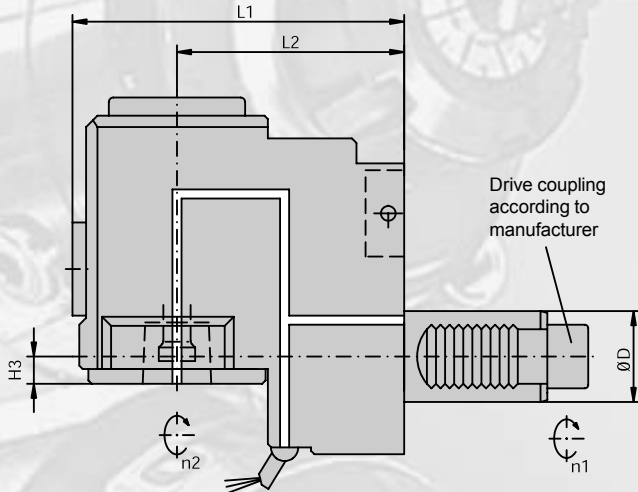
Please select suitable turret specification from the Machine Type listing!

Typ A: Face mounted

Typ B: O. D. mounted

Ratio = 1:1

Max. coolant pressure = 1100 PSI (80 bar)



**4105...** (IC - HP) with internal + external coolant supply

Torque wrench must be used!

Item No.	Turret specification				Clamping System			Dimensions / Data					Coolant Pressure diagram	Drw. No. 343-830820...
	∅D	Turret manufacturer	Typ	Drive coupling	Size			L1	L2	H3	M Nm	Ratio n1:n2		
410503023-30	30	Baruffaldi	A	TOEM 160	C3			120	85	3	32	1:1	D01013	...N296
410503010-30	30	Diplomatic	A	DIN 1809	C3			120	85	3	32	1:1	D01013	...N167
410503026-30	30	Okuma LB 200-M	A	1-step	C3			120	85	3	32	1:1	D01013	...N564
410503035-30	30	Sauter	A	DIN 5480	C3			120	85	3	32	1:1	D01013	...N733
410503003-30	30	Sauter	A	DIN 5482	C3			120	85	3	32	1:1	D01013	...N13
410504085-40	40	Baruffaldi	A	TOEM 200	C4			146	100	10	63	1:1	D01013	...N460
410504094-40	40	Diplomatic	A	DIN 1809	C4			146	100	10	63	1:1	D01013	...N536
410504153-40	40	Emag	B	DIN 1809	C4			136	90	10	63	1:1	D01013	...N856
410504075-40	40	Okuma LB 300-M	A	1-step	C4			146	100	10	63	1:1	D01013	...N224
410504052-40	40	Okuma LB 400-M	A	1-step	C4			146	100	10	63	1:1	D01013	...N54
410504130-40	40	Sauter	A	DIN 5480	C4			146	100	10	63	1:1	D01013	...N724
410504043-40	40	Sauter	A	DIN 5482	C4			146	100	10	63	1:1	D01013	...N69
410504044-50	50	Baruffaldi	A	TOEM 250	C4			156	110	10	63	1:1	D01013	...N577
410505063-50	50	Diplomatic	A	DIN 1809	C5			183	124	35	100	1:1	D01013	...N537
410505051-50	50	Diplomatic	A	DIN 1809	C5			183	124	-25	100	1:1	D01013	...N332
410504056-50	50	Emag	B	DIN 1809	C4			136	90	10	63	1:1	D01013	...N1165
410505019-50	50	Okuma LB 35II-M	A	2-step	C5			183	124	35	100	1:1	D01013	...N400
410505036-50	50	Okuma LB 35II-M	A	2-step	C5			188	129	-25	100	1:1	D01013	...N110
410505056-50	50	Okuma LU 35-M	A	1-step	C5			183	124	35	100	1:1	D01013	...N413
410505061-50	50	Okuma LU 35-M	A	1-step	C5			188	129	-25	100	1:1	D01013	...N491
410504000-50	50	Sauter	A	DIN 5480	C4			156	110	10	63	1:1	D01013	...N654
410505081-50	50	Sauter	A	DIN 5480	C5			183	124	35	100	1:1	D01013	...N981
410505053-50	50	Sauter	A	DIN 5482	C5			183	124	35	100	1:1	D01013	...N351
410505023-50	50	Sauter	A	DIN 5482	C5			183	124	-25	100	1:1	D01013	...N128
410505035-60	60	Diplomatic	A	DIN 1809	C5			183	124	35	100	1:1	D01013	...N538
410505019-60	60	Diplomatic	A	DIN 1809	C5			183	124	-25	100	1:1	D01013	...N16
410506004-60	60	Diplomatic	A	DIN 1809	C6			226	144	5	200	1:1	D01013	...N539
410505037-60	60	Okuma LU 45-M	A	1-step	C5			183	124	35	100	1:1	D01013	...N542
410505016-60	60	Okuma LU 45-M	A	1-step	C5			183	124	-25	100	1:1	D01013	...N235
410505038-60	60	Sauter	A	DIN 5482 B25x22	C5			183	124	35	100	1:1	D01013	...N543
410505015-60	60	Sauter	A	DIN 5482 B25x22	C5			183	124	-25	100	1:1	D01013	...N236
410506002-60	60	Sauter	A	DIN 5482 B25x22	C6			226	144	5	200	1:1	D01013	...N356
410506005-60	60	Sauter	A	DIN 5482 B28x25	C6			226	144	5	200	1:1	D01013	...N544

\*no VDI standard

H3=3, H3=5, H3=10, H3=35 : Coromant Capto™ in front of VDI center line

H3=-25 : Coromant Capto™ behind VDI center line

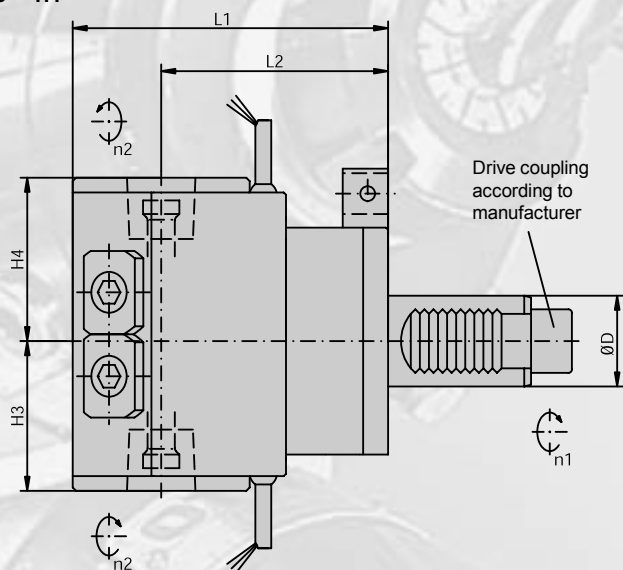
## Right angle double spindle drill/milling unit with Coromant Capto™

Please select suitable turret specification from the Machine Type listing!

Typ A: Face mounted

Typ B: O. D. mounted

Ratio = 1:1



**4105...** (EC) with external coolant supply

Torque wrench must be used!

Item No.	Turret specification				Clamping System			Dimensions / Data					Drw. No.
	ØD	Turret manufacturer	Typ	Drive Coupling	Size			L1	L2	H3 H4	M Nm	Ratio n1:n2	
<b>410503008-25</b>	25	Traub TNC 42	B	bevel gear	C3			100	65	58 50	20	1:1	343-830820... ...N1155
<b>410503054-30</b>	30	Emco HT-665	B	DIN 5480	C3			135	100	58 50	32	1:1	...N1313
<b>410503043-30</b>	30	Okuma LT 200-M	B	1-step	C3			125	90	50 58	32	1:1	...N1002
<b>410503049-30</b>	30	Sauter (L2=85)	B	DIN 5480	C3			120	85	58 50	32	1:1	...N1156
<b>410503007-30</b>	30	Sauter (L2=100)	B	DIN 5480	C3			135	100	58 50	32	1:1	...N38
<b>410503044-30</b>	30	Mori Seiki ZT1000Y	B	DIN 1809	C3			100	65	50 58	32	1:1	...N1052
<b>410503050-30</b>	30	Traub TNC 65	B	bevel gear	C3			110	75	58 50	32	1:1	...N1157
<b>410504171-40</b>	40	Emco HT-690	B	DIN 5480	C4			139	100	70 64	63	1:1	...N1158
<b>410504172-40</b>	40*	Mazak SQT-100M(S)	B	DIN 1809	C4			139	100	70 64	63	1:1	...N1159
<b>410504144-40</b>	40*	Mazak SQT-200M(S)	B	DIN 1809	C4			169	130	70 64	63	1:1	...N820
<b>410504173-40</b>	40	Mori Seiki ZT2500Y	B	DIN 1809	C4			149	110	70 64	63	1:1	...N1160
<b>410504174-40</b>	40	Okuma LT 300-M	B	1-step	C4			129	90	64 70	63	1:1	...N994
<b>410504175-40</b>	40	Okuma LT 400-M	B	1-step	C4			139	100	64 70	63	1:1	...N1161
<b>410504145-40</b>	40	Sauter (L2=100)	B	DIN 5480	C4			139	100	70 64	63	1:1	...N796
<b>410504143-40</b>	40	Sauter (L2=120)	B	DIN 5480	C4			159	120	70 64	63	1:1	...N860

\*no VDI standard

## Straight drill/milling unit with Coromant Capto™

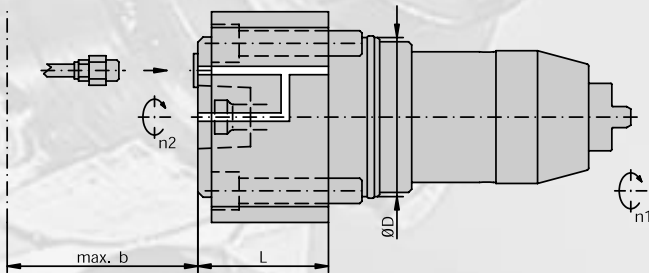
Suitable for standard turret (not VDI turret)

Check max. available tool length!

Ratio = 1:1

Max. coolant pressure = 435 PSI (30 bar)

(Check specified coolant pressure diagram!)



### 4101... (IC) with internal + external coolant supply

Torque wrench must be used!

Item No.	Turret specification			Clamping System		Dimensions / Data				Coolant	Drw. No.
	ØD	Machine Manufacturer	Max. RPM	Size	b	L1	M Nm	Ratio n1:n2	Pressure diagram	343-830820...	
410104002-65	65	Daewoo Puma 300 M Daewoo Puma 300 MS Daewoo Puma MX/TT 2000, 2500	4000*	C4	69 76 70	62	63	1:1	D01007	... N725	
410105011-75	75	Daewoo Puma 400 M/LM	4000*	C5	109	78	100	1:1	D01010	... N911	
410105001-85	85	Daewoo Puma 600, 700 M/LM	4000*	C5	131	73	140	1:1	D01010	... N708	
410104004-65	65	Nakamura Super NTX	4000*	C4	100	70	63	1:1	D01010	... N895	
410104001-75	75	Nakamura STS-40, STW-40, TW-30	4000*	C4	90	62	63	1:1	D01010	... N398	

\*(IC) not for turret option with max. RPM = 6000.

### 4101... (EC) with external coolant supply only

Torque wrench must be used!

Item No.	Turret specification			Clamping System		Dimensions / Data				Drw. No.
	ØD	Machine manufacturer	Max. RPM	Size	b	L1	M Nm	Ratio n1:n2	343-830820...	
410103000-55	55	Daewoo Puma 200, 230, 240, 250 M Daewoo Puma 1500, 2000, 2500 Y	6000	C3	62 80	50	32	1:1	... N883	
410104001-65	65	Daewoo Puma 300 M Daewoo Puma 300 MS Daewoo Puma MX/TT 2000, 2500	6000	C4	69 76 70	62	63	1:1	... N687	
410105012-75	75	Daewoo Puma 400 M/LM	4000	C5	109	78	100	1:1	... N1147	
410105002-85	85	Daewoo Puma 600, 700 M/LM	4000	C5	131	73	140	1:1	... N735	
410103002-55	55	Nakamura Super NTJ, Super NTM Nakamura TW-10 Nakamura TW-20 (16 stations turret) Nakamura WT-150, WT-250 Nakamura WTS-150, WTW-150	6000	C3	62	50	32	1:1	... N1162	
410104003-65	65	Nakamura Super NTX	6000	C4	100	70	63	1:1	... N894	
410104000-75	75	Nakamura STS-40, STW-40, TW-30	6000	C4	90	62	63	1:1	... N397	

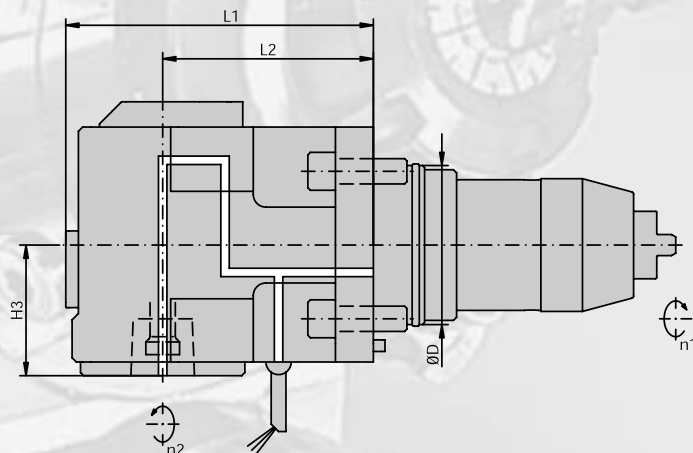
## Right angle drill/milling unit with Coromant Capto™ - HIGH PRESSURE -

Suitable for standard turret (not VDI turret)

Check max. available tool length!

Ratio = 1:1

Max. coolant pressure = 1100 PSI (80 bar)



### 4105... (IC - HP) with internal + external coolant supply

Torque wrench must be used!

Item No.	Turret specification			Clamping System	Dimensions / Data					Coolant	Drw. No.
	ØD	Machine manufacturer	Max. RPM		Size	L1	L2	H3 H4	M Nm		
410503003-55	55	Daewoo Puma 200, 230, 240, 250 M Daewoo Puma 1500, 2000, 2500 Y	6000	C3	95	60	45	32	1:1	D01013	343-830820... ... N1148
410504003-65	65	Daewoo Puma 300 M Daewoo Puma 300 MS	6000	C4	124	78	57	63	1:1	D01013	... N736
410504010-65	65	Daewoo Puma MX/TT 2000, 2500	6000	C4	146	100	60	63	1:1	D01013	... N1322
410505017-75	75	Daewoo Puma 400 M/LM	4000	C5	144	85	86	100	1:1	D01013	... N912
410505002-85	85	Daewoo Puma 600, 700 M/LM	4000	C5	145	95	75	100	1:1	D01013	... N709
410503001-55	55	Nakamura Super NTJ, Super NTM Nakamura TW-10 Nakamura TW-20 (16 stations turret) Nakamura WT-150, WT-250 Nakamura WTS-150, WTW-150	6000	C3	89	55	45	32	1:1	D01013	... N1082
410504004-65	65	Nakamura Super NTX, TW-20 Nakamura WT-300	6000	C4	111	65	60	63	1:1	D01013	... N737
410504033-75	75	Nakamura STS-40, STW-40, TW-30	6000	C4	146	100	57	63	1:1	D01013	... N214

### 4105... (EC) with external coolant supply only

Torque wrench must be used!

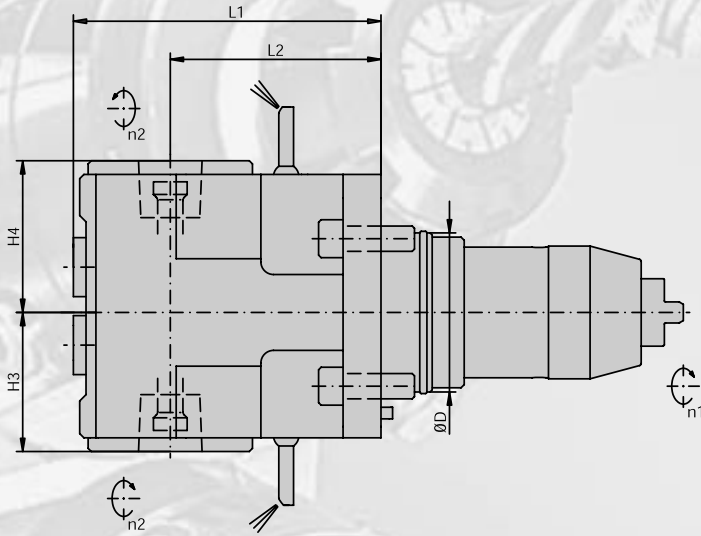
Item No.	Turret specification			Clamping System	Dimensions / Data					Drw. No.
	ØD	Machine manufacturer	Max. RPM		Size	L1	L2	H3 H4	M Nm	
410503002-55	55	Daewoo Puma 200, 230, 250 M Daewoo Puma 1500, 2000, 2500 Y	6000	C3	95	60	45	32	1:1	343-830820... ... N884
410504002-65	65	Daewoo Puma 300 M Daewoo Puma 300 MS	6000	C4	124	78	57	63	1:1	... N688
410504009-65	65	Daewoo Puma MX/TT 2000, 2500	6000	C4	146	100	60	63	1:1	... N1321
410505018-75	75	Daewoo Puma 400 M/LM	4000	C5	144	85	86	100	1:1	... N950
410505003-85	85	Daewoo Puma 600, 700 M/LM	4000	C5	145	95	75	100	1:1	... N739
410503000-55	55	Nakamura Super NTJ, Super NTM Nakamura TW-10 Nakamura TW-20 (16 stations turret) Nakamura WT-150, WT-250 Nakamura WTS-150, WTW-150	6000	C3	89	55	45	32	1:1	... N1081
410504001-65	65	Nakamura Super NTX, TW-20 Nakamura WT-300	6000	C4	111	65	60	63	1:1	... N639
410504034-75	75	Nakamura STS-40, STW-40, TW-30	6000	C4	146	100	57	63	1:1	... N396



## Right angle double spindle drill/milling unit with Coromant Capto™

Suitable for standard turret (not VDI turret)  
Check max. available tool length!

Ratio = 1:1



**4105...** (EC) with external coolant supply only

Torque wrench must be used!

Item No.	Turret specification			Clamping System		Dimensions / Data					Drw. No.
	ØD	Machine manufacturer	Max. RPM	Size	L1	L2	H3 H4	M Nm	Ratio n1:n2		
<b>410503004-55</b>	55	Daewoo Puma 200, 230, 250 M Daewoo Puma 1500, 2000, 2500 Y	6000	C3	104	70	50 58	32	1:1	343-830820... ... N1142	
<b>410504008-65</b>	65	Daewoo Puma 300 M/MS Daewoo TX200M/Y	6000	C4	117	78	64 70	63	1:1	... N1143	
<b>410503005-55</b>	55	Nakamura Super NTJ Nakamura TW-10 Nakamura TW-20 (16 stations turret) Nakamura WT-150 Nakamura WT-250	6000	C3	89	55	50 58	32	1:1	... N1144	
<b>410504007-65</b>	65	Nakamura Super NTX, TW-20 Nakamura WT-300	6000	C4	111	65	64 70	63	1:1	... N1145	
<b>410504035-75</b>	75	Nakamura STS-40, STW-40, TW-30	6000	C4	139	100	64 70	63	1:1	... N967	

## Straight drill/milling unit with Coromant Capto™

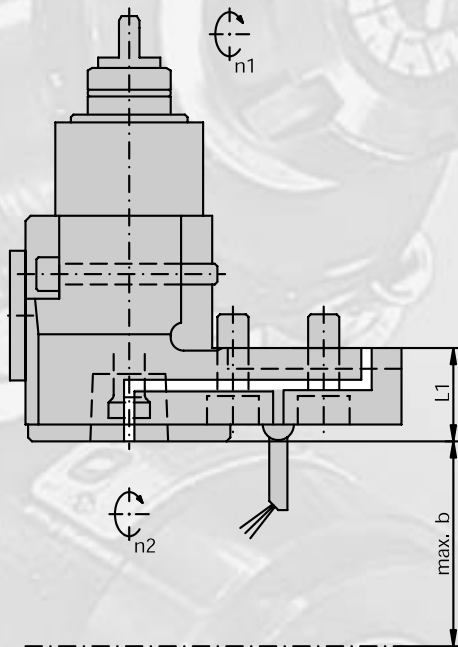
Suitable for standard turret (not VDI turret)

Check max. available tool length!

Ratio = 1:1

Max. coolant pressure = 435 PSI (30 bar)

(Check specified coolant pressure diagram!)



### 4101... (IC) with internal + external coolant supply

Torque wrench must be used!

Item No.	Turret specification			Clamping System		Dimensions / Data				Coolant	Drw. No.
	∅D	Machine Manufacturer	Max. RPM	Size	b	L1	M Nm	Ratio n1:n2	Pressure diagram	343-830820...	
410103001-00	-	Mori Seiki SL-150 Mori Seiki DL-150	4000*	C3	76	24	32	1:1	D01010	... N98	
410104026-00	-	Mori Seiki SL/ZL-200, -250, SL-2500 Mori Seiki ZT-2500	4000*	C4	79 89	36	63	1:1	D01010	... N377	
410104027-00	-	Mori Seiki SL-300	4000*	C4	79	36	50	1:1	D01010	... N572	

\*(IC) not for turret option with max. RPM = 6000.

### 4101... (EC) with external coolant supply only

Torque wrench must be used!

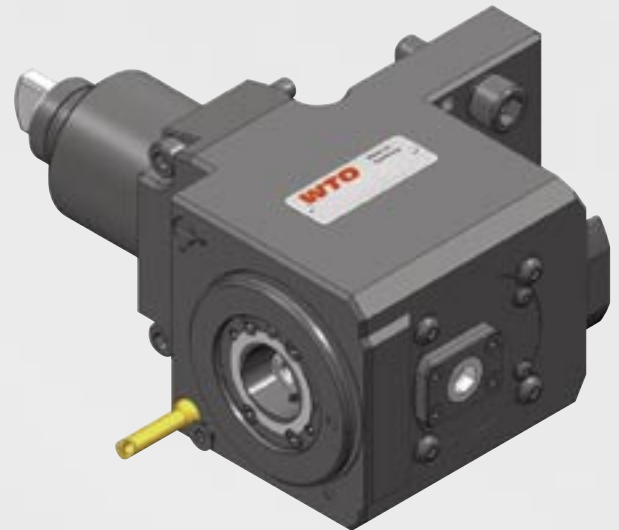
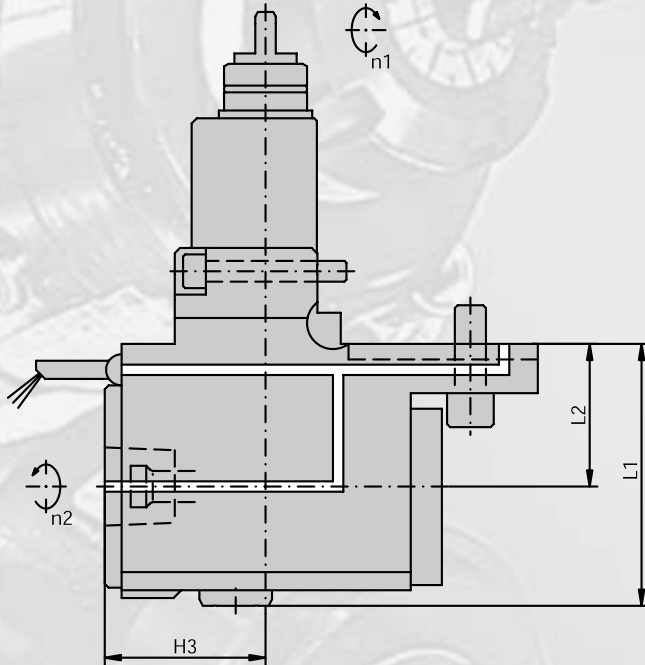
Item No.	Turret specification			Clamping System		Dimensions / Data				Drw. No.
	∅D	Machine manufacturer	Max. RPM	Size	b	L1	M Nm	Ratio n1:n2	343-830820...	
410103000-00	-	Mori Seiki SL-150 Mori Seiki DL-150	6000	C3	76	24	32	1:1	... N32	
410104025-00	-	Mori Seiki SL/ZL-200, -250, SL-2500 Mori Seiki ZT-2500	6000	C4	79 89	36	63	1:1	... N376	
410104028-00	-	Mori Seiki SL-300	6000	C4	79	36	50	1:1	... N573	

## Straight drill/milling unit with Coromant Capto™

Suitable for standard turret (not VDI turret)  
Check max. available tool length!

**Ratio = 1:1**

**Max. coolant pressure = 435 PSI (30 bar)**  
(Check specified coolant pressure diagram!)



### 4101... (IC) with internal + external coolant supply

Torque wrench must be used!

Item No.	Turret specification			Clamping System		Dimensions / Data				Coolant Pressure diagram	Drw. No.
	∅D	Machine Manufacturer	Max. RPM	Size	b	L1	M Nm	Ratio n1:n2			
410103001-00	-	Mori Seiki SL-150 Mori Seiki DL-150	4000*	C3	76	24	32	1:1	D01010	343-830820... ... N98	
410104026-00	-	Mori Seiki SL/ZL-200, -250, SL-2500 Mori Seiki ZT-2500	4000*	C4	79 89	36	63	1:1	D01010	... N377	
410104027-00	-	Mori Seiki SL-300	4000*	C4	79	36	50	1:1	D01010	... N572	

\* (IC) not for turret option with max. RPM = 6000.

### 4101... (EC) with external coolant supply only

Torque wrench must be used!

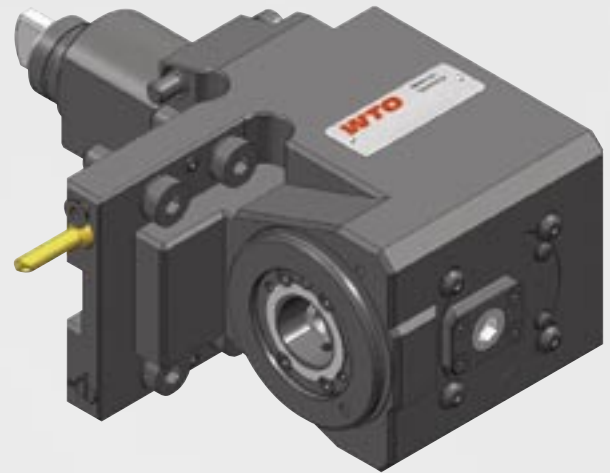
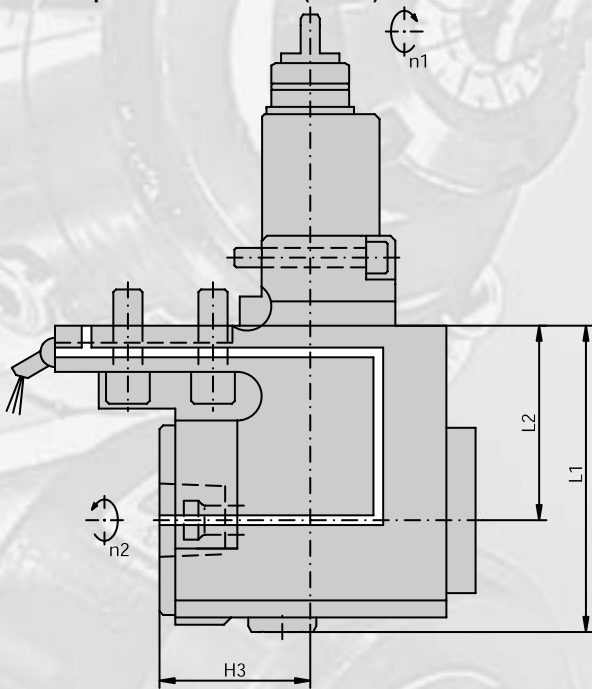
Item No.	Turret specification			Clamping System		Dimensions / Data				Drw. No.
	∅D	Machine manufacturer	Max. RPM	Size	b	L1	M Nm	Ratio n1:n2		
410103000-00	-	Mori Seiki SL-150 Mori Seiki DL-150	6000	C3	76	24	32	1:1	... N32	
410104025-00	-	Mori Seiki SL/ZL-200, -250, SL-2500 Mori Seiki ZT-2500	6000	C4	79 89	36	63	1:1	... N376	
410104028-00	-	Mori Seiki SL-300	6000	C4	79	36	50	1:1	... N573	

## Right angle drill/milling unit with Coromant Capto™ - HIGH PRESSURE -

Suitable for standard turret (not VDI turret)  
Check max. available tool length!

Ratio = 1:1

Max. coolant pressure = 1100 PSI (80 bar)



### 4105... (IC - HP) with internal + external coolant supply

Torque wrench must be used!

Item No.	Turret specification			Clamping System	Dimensions / Data					Coolant	Drw. No.
	ØD	Machine manufacturer	Max. RPM		Size	L1	L2	H3	M Nm		
410504047-00	-	Mori Seiki ZT-2500	6000	C4	126	80	60	63	1:1	D01013	343-830820... ... N842

### 4105... (EC) with external coolant supply only

Torque wrench must be used!

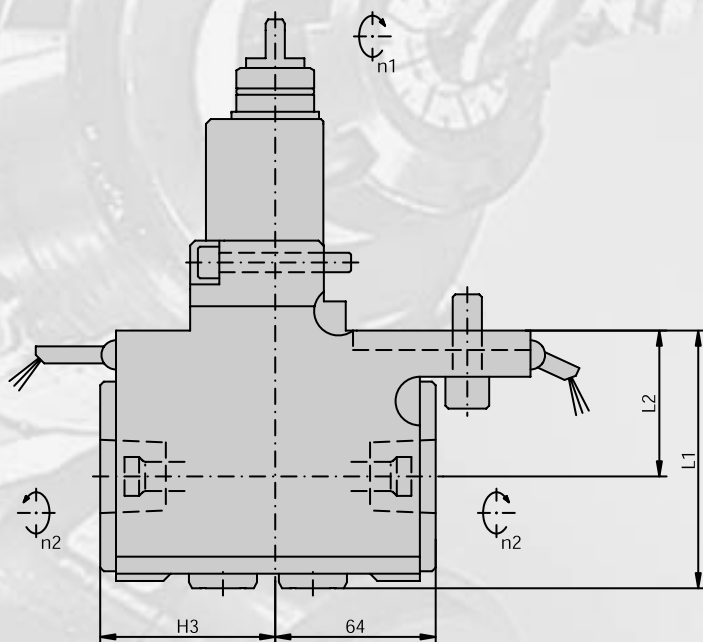
Item No.	Turret specification			Clamping System	Dimensions / Data					Drw. No.	
	ØD	Machine manufacturer	Max. RPM		Size	L1	L2	H3	M Nm		Ratio n1:n2
410504046-00	-	Mori Seiki ZT-2500	6000	C4	126	80	60	63	1:1		343-830820... ... N841

Right angle double spindle drill/milling unit with Coromant Capto™

Suitable for standard turret (not VDI turret)

Check max. available tool length!

Ratio = 1:1



### 4105... (EC) with external coolant supply only

Torque wrench must be used!

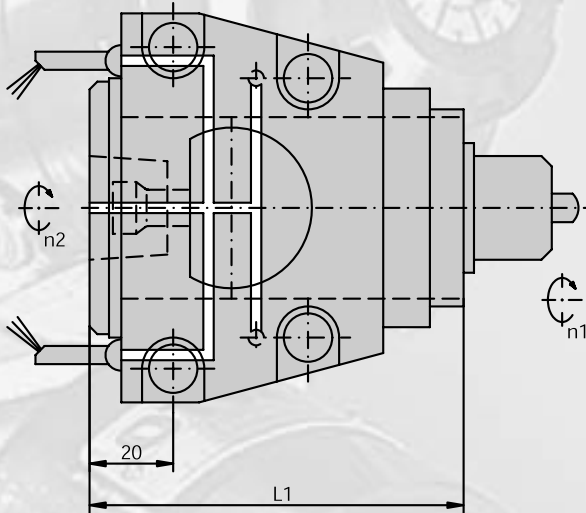
Item No.	Turret specification			Clamping System	Dimensions / Data					Drw. No.
	ØD	Machine manufacturer	Max. RPM		Size	L1	L2	H3 H4	M Nm	
410503002-00	-	Mori Seiki SL-150	6000	C3	100	65	90 70	32	1:1	343-830820... ... N448
410504048-00	-	Mori Seiki SL/ZL-200, -250, SL-2500	6000	C4	106	60	70 64	63	1:1	... N843
410504045-00	-	Mori Seiki ZT-2500	6000	C4	126	80	64 70	63	1:1	... N836

## Straight drill/milling unit with Coromant Capto™

Suitable for standard turret (not VDI turret)  
Check max. available tool length!

Ratio = 1:1

Max. coolant pressure = 435 PSI (30 bar), 1100 PSI (80 bar)  
(Check specified coolant pressure diagram!)



### 4101... (IC) with internal + external coolant supply (max. 435 PSI / 30 bar)

Torque wrench must be used!

Item No.	Turret specification			Clamping System		Dimensions / Data			Coolant	Drw. No.
	∅D	Machine Manufacturer	Max. RPM	Size		L1	M Nm	Ratio n1:n2	Pressure diagram	343-830820... ... N391
410105001-00	-	Mori Seiki SL-400, SL-600	4000	C5		146	100	1:1	D01006	

### 4101... (IC - HP) with internal + external coolant supply (max. 1100 PSI / 80 bar)\*

Torque wrench must be used!

Item No.	Turret specification			Clamping System		Dimensions / Data			Coolant	Drw. No.
	∅D	Machine Manufacturer	Max. RPM	Size		L1	M Nm	Ratio n1:n2	Pressure diagram	343-830820... ... N813
410105004-00	-	Mori Seiki SL-400, SL-600	4000	C5		176	100	1:1	D01013	

\* suitable only for operating in Z-axis!

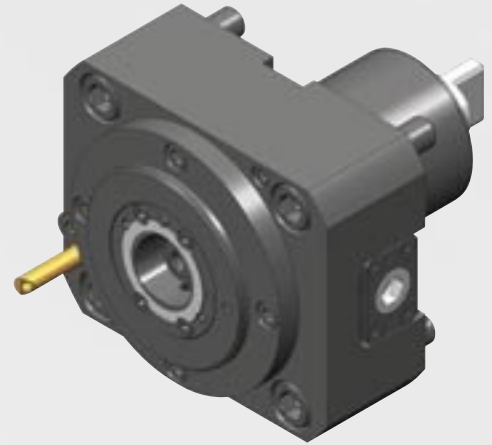
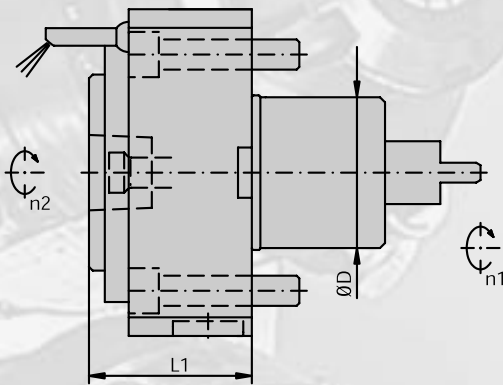
### 4101... (EC) with external coolant supply only

Torque wrench must be used!

Item No.	Turret specification			Clamping System		Dimensions / Data			Coolant	Drw. No.
	∅D	Machine Manufacturer	Max. RPM	Size		L1	M Nm	Ratio n1:n2	Pressure diagram	343-830820... ... N390
410105000-00	-	Mori Seiki SL-400, SL-600	4000	C5		146	100	1:1		

## Straight drill/milling unit with Coromant Capto™

Suitable for standard turret  
 Check max. available tool length!  
**Ratio = 1:1**



### 4101... (EC) with external coolant supply

Torque wrench must be used!

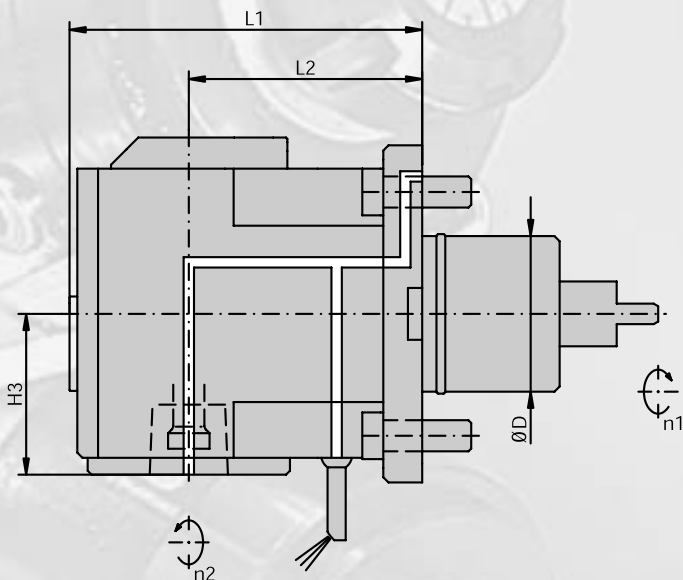
Item No.	Turret specification			Clamping System		Dimensions / Data				Drw. No.
	$\varnothing D$	Machine manufacturer	Max. RPM	Size	b	L1	M Nm	Ratio n1:n2	343-830820...	
<b>410104034-60</b>	60	Mori Seiki NL-1000, -1500, -2500	6000	C4	83	65	63	1:1	... N1154	
<b>410105044-60</b>	60	Mori Seiki NL-1000, -1500, -2500	6000	C5	83	70	63	1:1	... N1366	

## Right angle drill/milling unit with Coromant Capto™ - HIGH PRESSURE -

Suitable for standard turret

Ratio = 1:1

Max. coolant pressure = 1100 PSI (80 bar)



### 4105... (IC - HP) with internal + external coolant supply

Torque wrench must be used!

Item No.	Turret specification			Clamping System	Dimensions / Data					Coolant	Drw. No.
	ØD	Machine manufacturer	Max. RPM		Size	L1	L2	H3	M Nm		
<b>410504040-60</b>	60	Mori Seiki NL-1000, -1500, -2500	6000	C4	136	90	60	63	1:1	D01013	343-830820... ... N1121
<b>410505048-60</b>	60	Mori Seiki NL-1000, -1500, -2500	6000	C5	136	90	60	63	1:1	D01013	... N1152

### 4105... (EC) with external coolant supply only

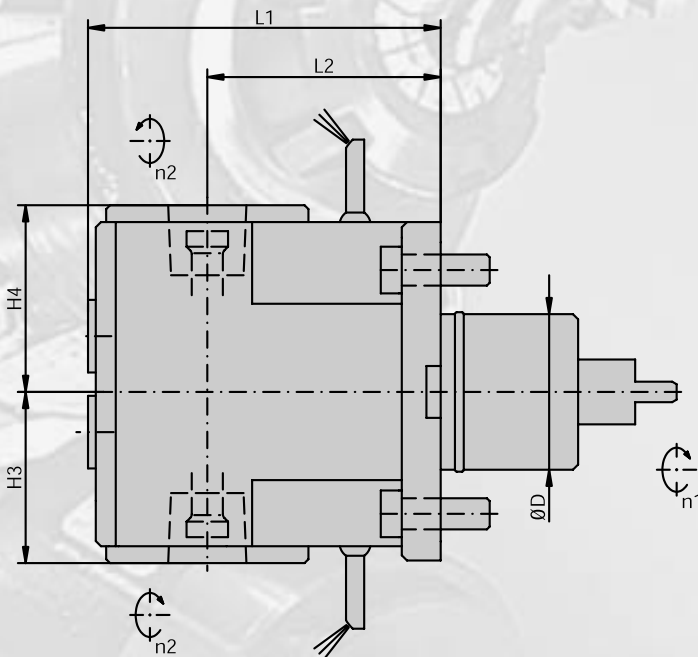
Torque wrench must be used!

Item No.	Turret specification			Clamping System	Dimensions / Data					Drw. No.	
	ØD	Machine manufacturer	Max. RPM		Size	L1	L2	H3	M Nm		Ratio n1:n2
<b>410504039-60</b>	60	Mori Seiki NL-1000, -1500, -2500	6000	C4	136	90	60	63	1:1		343-830820... ... N1120
<b>410505047-60</b>	60	Mori Seiki NL-1000, -1500, -2500	6000	C5	136	90	60	63	1:1		... N1151



## Right angle double spindle drill/milling unit with Coromant Capto™

Suitable for standard turret  
**Ratio = 1:1**



**4105...** (EC) with external coolant supply only

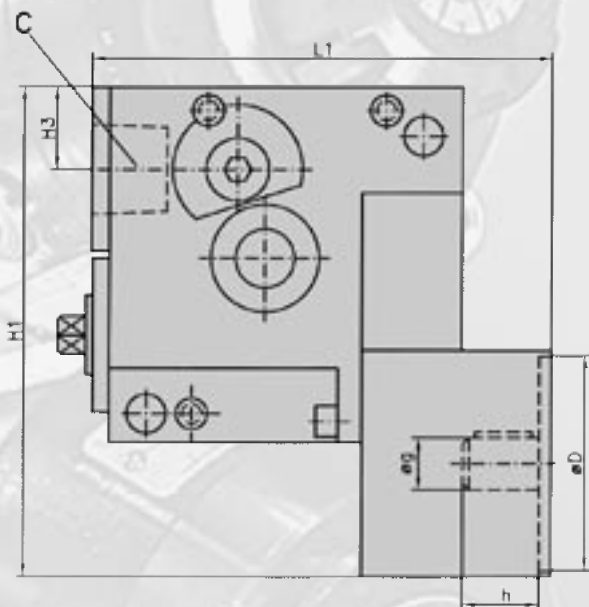
Torque wrench must be used!

Item No.	Turret specification			Clamping System	Dimensions / Data					Drw. No.
	ØD	Machine manufacturer	Max. RPM		Size	L1	L2	H3 H4	M Nm	
<b>410504041-60</b>	60	Mori Seiki NL-1000, -1500, -2500	6000	C4	136	90	64 70	63	1:1	343-830820... ... N1122
<b>410505049-60</b>	60	Mori Seiki NL-1000, -1500, -2500	6000	C5	136	90	64 86	63	1:1	... N1153

Turret block with Coromant Capto™  
- Cycle controlled lathes -

**Only available for machines with this option!**

The turret block is mounted and adjusted on the upper slide.  
Turret block will be delivered without drive motor and control.  
The complete mounting and integration is performed by the machine manufacturer.  
To be used with turning tool holders and driven tools.



**4002...**

Torque wrench must be used!

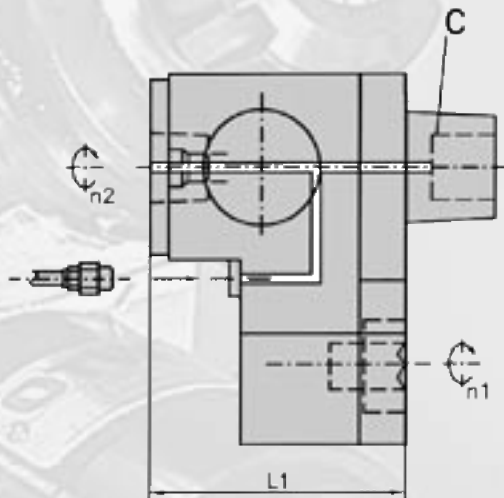
Item No.	Interface C	Motor interface				Dimensions / Data						RPM Max. RPM	Drw. No. 343- 830820... ... N112 ... N350 ... N773 ... N479
		ØD	Motor drive	Øg	h	L1	H1	H3	M Nm	Ratio n1:n2			
<b>400295000-06</b>	C6	95	DIN748	19	40	188	254	42	100	3:1	3000	... N112	
<b>4002A1000-06</b>	C6	110	DIN748	24	50	233	251	42	100	3:1	3000	... N350	
<b>4002A3008-06</b>	C6	130	DIN748	32	58	248	261	42	100	3:1	3000	... N773	
<b>4002A3000-08</b>	C8	130	DIN748	32	58	292	356	50	100	3:1	3000	... N479	

## Straight drill/milling unit with Coromant Capto™ - Cycle controlled lathes -

Suitable for WTO turret block only.  
For manual tool change; decentral drive.

**Ratio = 1:1**

**Max. coolant pressure = 435 PSI (30 bar)**  
(Check specified coolant pressure diagram!)



### 4101... (IC) with internal + external coolant supply

Torque wrench must be used!

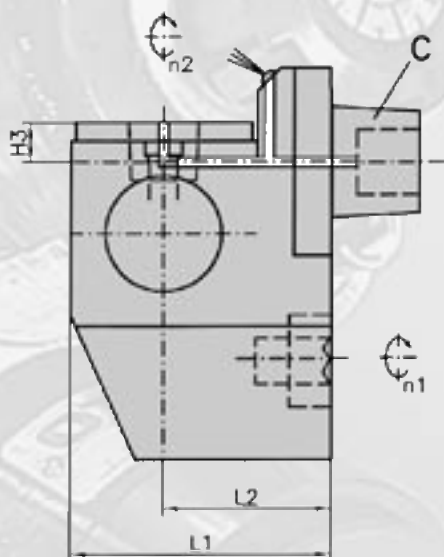
Item No.	Turret block interface		Clamping System				Dimensions / Data			Coolant	Drw. No.
	C		Size				L1	M Nm	Ratio n1:n2	Pressure diagram	343-830820...
<b>410104000-06</b>	C6		C4				110	80	1:1	D01002	...N122
<b>410105000-06</b>	C6		C5				120	100	1:1	D01002	...N113
<b>410105000-08</b>	C8		C5				120	100	1:1	D01002	...N484
<b>410106000-08</b>	C8		C6				178	100	1:1	D01012	...N777

## Right angle drill/milling unit with Coromant Capto™ - Cycle controlled lathes -

Suitable for WTO turret block only.  
For manual tool change; decentral drive.

**Ratio = 1:1**

**Max. coolant pressure = 435 PSI (30 bar)**  
(Check specified coolant pressure diagram!)

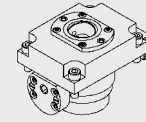
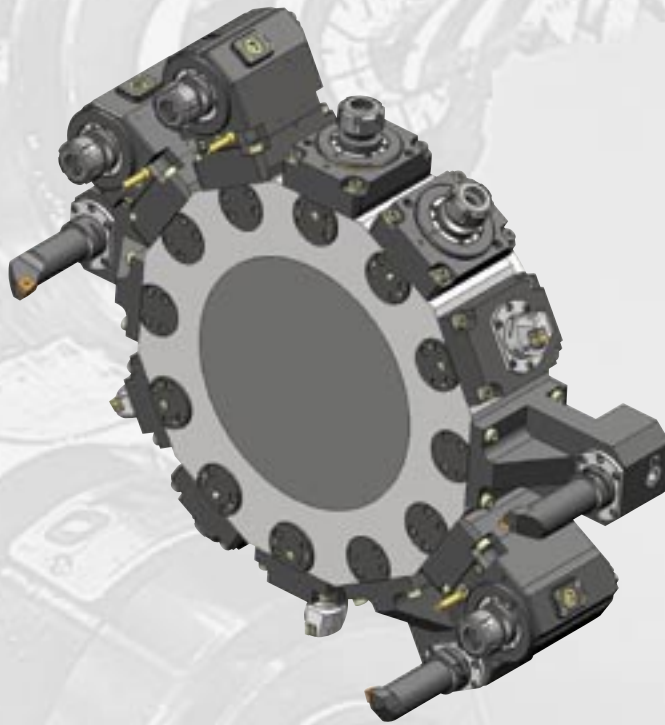


### 4105... (IC - HP) with internal + external coolant supply

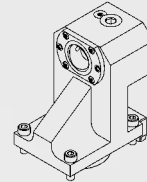
Torque wrench must be used!

Item No.	Turret block interface		Clamping System				Dimensions / Data					Coolant	Drw. No.
	C		Size				L1	L2	H3	M Nm	Ratio n1:n2	Pressure diagram	
410504000-06	C6		C4				110	72	18	80	1:1	D01002	343-830820... ...N123
410505000-06	C6		C5				120	72	30	100	1:1	D01002	...N114
410505000-08	C8		C5				120	72	30	100	1:1	D01002	...N485
410506000-08	C8		C6				195	125	70	100	1:1	D01012	...N778

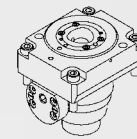
The new turret interface for high productivity mill/turning centres



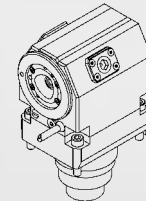
Clamping unit straight



Clamping unit right angle



Drill/Milling unit straight



Drill/Milling unit right angle

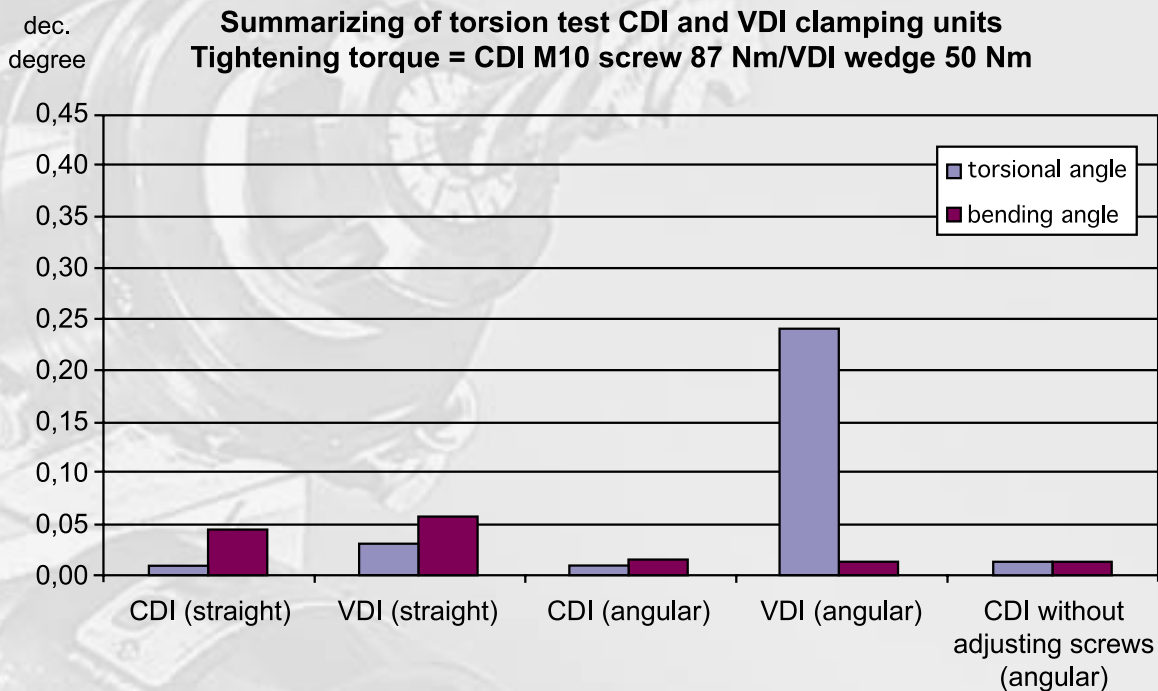
## CDI = Advanced Technology

- + High stability and rigidity
- + Same interface for static and driven toolholders
- + Flexible and symmetric interface (180° mountable)
- + Centerline adjustment for right angle toolholders
- + Shorter tool projection resulting in longer tool capabilities

## CDI = More Customer Value

- + Higher cutting performance
- + Longer cutting tool life
- + Better workpiece quality
- + More available tool length for radial drilling operations

## CDI / VDI - Higher Rigidity



### CDI: Standard sizes

- + CDI 58 → Coromant Capto™ 3  
turret disk size / 260 mm  
DTH with 32 Nm, 6000 1/min  
internal coolant supply
- + CDI 68 → Coromant Capto™ 4  
turret disk size / 320 mm  
DTH with 63 Nm, 6000 1/min  
internal coolant supply
- + CDI 80 → Coromant Capto™ 5, 6  
turret disk size / 380 mm  
DTH with 63/125 Nm, 6000 1/min  
internal coolant supply

### CDI: Available machine models

- + CDI 58 Index G160  
Benzinger TNI, TCM\*
- + CDI 68 Emag VSC 200, 250  
Emco HT-665  
Hessapp DVT-250, 300  
Okuma Macturn 350, LT 300M  
Takisawa TMM-250\*
- + CDI 80 Emag VSC 400, 500  
Emco HT-690  
Gildemeister GMX 400, 500  
Hessapp DVT-550  
Index G400  
Mori Seiki ZT-2500Y  
Traub TNA 700  
\* currently in design stage

# PRESSURE DIAGRAMM

ISO 9001

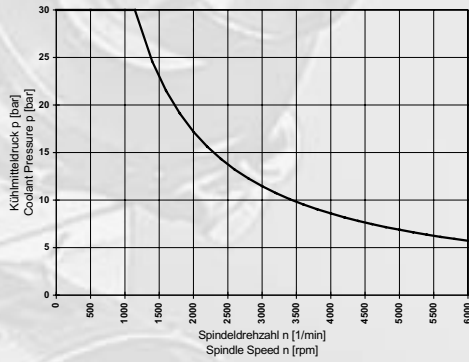
**WTO**

Maximum possible coolant pressure depends on RPM.  
 Every sealing system has an individual diagram.  
 Select the suitable diagram by the number stated in the  
 data sheet of the driven precision tool.

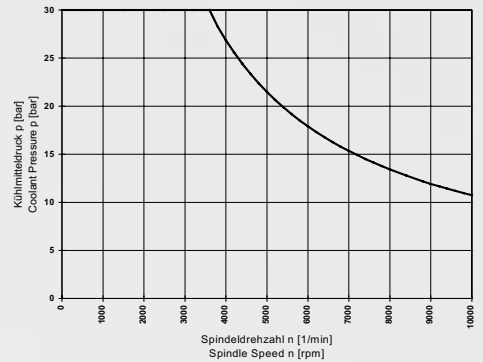
**ATTENTION:**

Do not run dry! Coolant must to be switched on before rotating.  
 For machining cast iron, only use driven tools with diagram D01012 or D01013.  
 1 bar = 14.5 PSI  
 Filtration of minimum 50 µm recommended

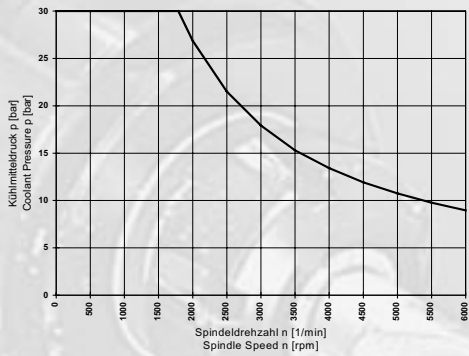
**D01001**



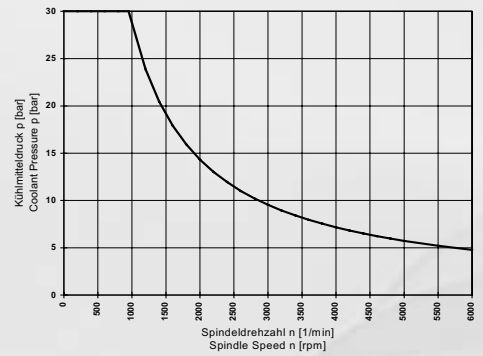
**D01002**



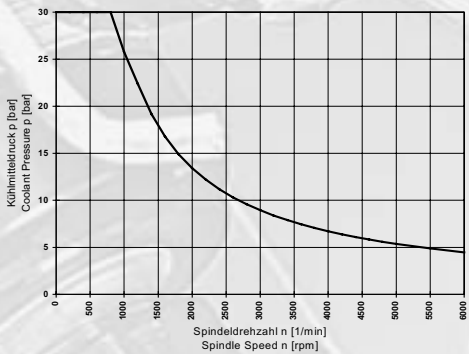
**D01003**



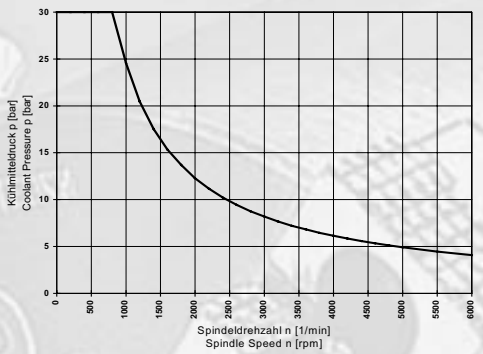
**D01007**



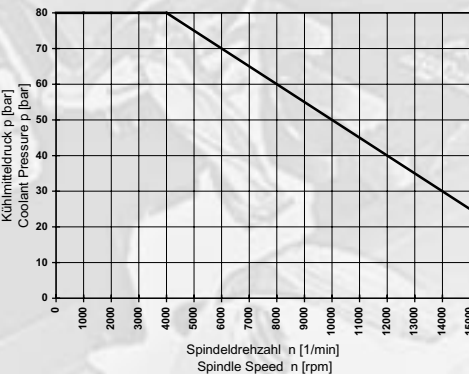
**D01010**



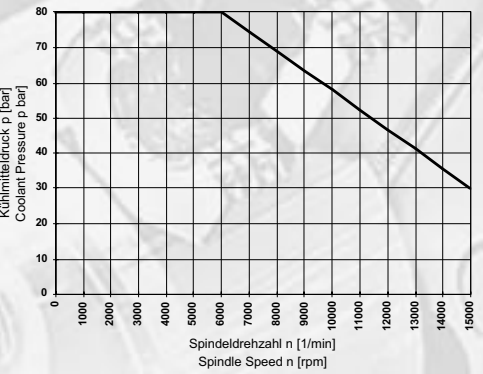
**D01011**



**D01012**



**D01013**



## CHRONOLOGY OF THE DRIVEN TOOL PIONIER

1977

Development of the industry's first right angle and multiple spindle heads for machining centers with automatic tool changer by Werner Tschiggfrei (founded WTO in 1983)

1987

Presentation of the industry's first modular driven tool system for mill/turning centers

1989

Driven tools with through the spindle internal coolant offered for the first time as a standard program

1990

Development of the first driven tools with Coromant Capto Quick Change System for Sandvik Coromant

1995

Founded U.S. Division of WTO with sales and service capabilities

1996

Development of a driven tool system with quick change suitable for cycle controlled lathes  
Development of turret integrated driven tool spindles with quick change system

1997

Development of the WT System (compact driven tools with interchangeable presetable tool spindles)  
Development of a modular tooling and drive system for multi spindle turning centers

1998

Development of driven tools with HSK (new compact design with quick clamping by cam lock)

2000

Development of driven tools for thread wirling operations on swiss type turning centers

2001

Driven precision tools with minimum quantity lubrication supply through the spindle

2002

Development of "Performance Series" designed for highest performance



### Germany

WTO GmbH  
Auf der oberen Au 45  
77797 Ohlsbach

Telefon: +49-(0)7803 9392-0  
Telefax: +49-(0)7803 9392-40  
E-Mail: [info@wto.de](mailto:info@wto.de)

[www.wto.de](http://www.wto.de)



### USA

WTO Inc.  
9123 Monroe Rd. Suite 100  
Charlotte, NC 28270

Telefon: +1 -704 841 - 4465  
Telefax: +1 -704 841 - 4467  
E-Mail: [info@wto-usa.com](mailto:info@wto-usa.com)

[www.wto-usa.com](http://www.wto-usa.com)