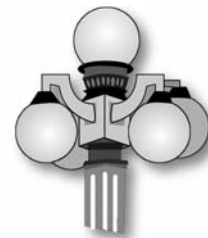


Midwinter²⁰¹⁰ Bulletin

BAY VIEW, MICHIGAN

FRIDAY, FEBRUARY 26, 2010



Two-horse open sleigh

Driver Sam Cedwell, Bubba (left) and Prince prepare to take a group of Terrace Inn guests on a sleigh-ride tour of Bay View. (Town Crier photo)

New boss

Stakoe takes reins as executive director

By Tamara Stevens
Assistant to the Executive Director

As of Feb. 16, John P. Stakoe is the new executive director of the Bay View Association. Stakoe fills the position formerly held by Rodney Slocum for the past 26 years.

“The Board of Trustees (of Bay View) believes John will be a strong manager and leader, and his extensive experience working with people will be a real asset,” said President Larry Ternan. “John is excited to get started and to carry out the mission and programs of Bay View.



“He brings to us many talents and knowledge in areas which will be of direct benefit to the Association and the greater community.”

Stakoe was elected three times to the Michigan House of Representatives, serving the 44th District from 2003 through January 2009, when he was term limited and could not run for

See STAKOE, page 4

President Ternan: Heart of Bay View on tap for summer

By Larry Ternan
Bay View President

Hello from Bay View, a Chautauqua on Lake Michigan. In our 135th year, we look forward to this summer and a bright future.

Plans for the 2010 Festival and Assembly program are taking shape with outstanding speakers, fine classical music featured throughout the summer, new educational offerings and notable events. Our capable program directors, Ned Dewire, Chris Ludwa,

Toby Jones and Renee Allen report on their ambitious plans in this Bulletin.

Our new Executive Director, John Stakoe, started his new position on Feb. 16 (see above) with an overlap

See HEART, page 6

Outreach survey: Keep charitable focus local

By Karen Weaver
Bay View Outreach

Two methods were employed by a subcommittee of the Worship and Religious Life Committee to secure member input concerning the possible scope and direction of future Bay View outreach activities.

A written survey – accessible both online and in printed form – generated a total of 99 responses. Survey results are summarized in the chart at right. (Note: Figures may not total 100 percent because some questions allowed multiple responses.)

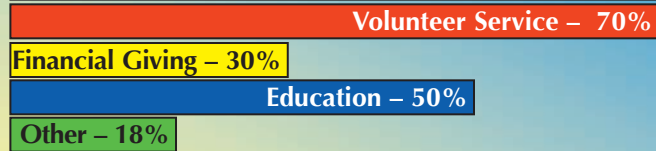
Many people began their responses with words of thanks: “Thank you for the opportunity to share my thoughts.” “I appreciate you considering my opinion.”

Some survey respondents defined outreach with comments such as “any effort made by those who have so much to help those who are less fortunate.” Others said outreach is helping those in our “backyard” who might need help so Bay View “can be better known and appreciated in the local community.” Several people saw Bay View as a “catalyst in the local area” citing efforts such as Crop Walk.

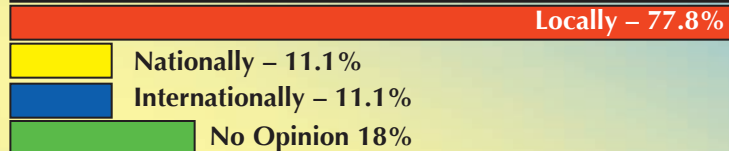
A minority said outreach efforts should not be part of Bay View programs, as they don’t consider Bay View to be their primary residence or community. Comments in this vein included “Financial giving should be done through our local (home) churches,” and “Worship and Religious Life should make sure internal needs are met before sending money outside Bay View.”

Worship and Religious Life Outreach Survey 2009

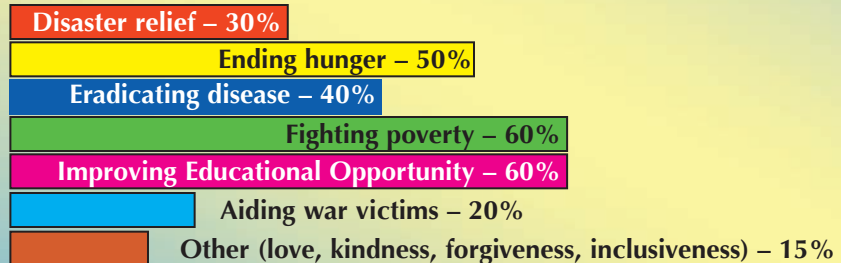
#1. Bay View outreach program should emphasize:



#2. Bay View charitable outreach should be focused:



#3. What values most faithfully represent your understanding of Christian ministry?



Should Bay View “piggyback” on existing well established programs such as Habitat for Humanity, Red Cross, local food banks, Doctors Without Borders, etc.?



A series of cottage meetings served to reinforce and supplement survey results. Ideas discussed during these sessions fell into two groups: 1) Suggestions for specific outreach programs and services and 2) proposals for communicating/publicizing outreach programs within Bay View and the wider community.

Outreach programs and services

- Create a pay-it-forward barter system: You lend your Bay View neighbor a hand – maybe drive him to the supermarket or teach her to knit – and in return, another Bay View neighbor patches your roof or walks your dog. This “time banking” program would turn traditional volunteerism into a two-way street, transforming recipients into givers, givers into recipients. (Visit

www.timebanks.org to see this idea at work.)

- Broaden the religious experience. For example, organize an occasional special service like Taize, or family hymns on the beach. This might tie in to a community-wide event like the C.S. Lewis Festival and be promoted through local churches. All people of all faiths could participate.

- Extend an invitation to people such as Greg Mortenson, author of “Three Cups of Tea,” to speak in Bay View about his efforts to empower girls and women in underdeveloped countries through education.

- Broaden the idea of outreach to include in-reach; do a better job of

See OUTREACH, page 3

Performing Arts preview; musical, opera to switch

By Chris Ludwa
Artistic Director

It's been an incredible year, both professionally and personally. Melissa and Alex continue to be well, and his natural enthusiasm for music, life, and community are more apparent each day. I share this fact not as a belated Christmas card, but because I believe these are qualities that each of us on the human journey crave, and that which the Performing Arts provide to the Bay View community and the surrounding region. In that spirit, the following are highlights for the upcoming summer:



Chris Ludwa

- Our Vespers series, northern Michigan's most affordable, eclectic concert series, will continue the tradition of featuring internationally-acclaimed faculty talent, the Festival choir, and music that echoes the experiences of our lives.

- Bay View Theatre Arts will pro-

duce a star-studded professional revue and three family-oriented, fully-staged productions of "Willy Wonka" (Youth Theatre), "The Magic Flute" (Opera) and "The Wizard of Oz" (Musical).

- A Motown tour called "American Vision: The Music of Ray Charles and Stevie Wonder" featuring Jerome Collins, lead singer for the rising group called Straight No Chaser. This early season concert will kick off the seasons "On the Rocks" pops series with a bang.

- Crouse Visiting Artist series will include Barrage, a fiddle-fusion sensation that turns classical music on its ear. Metropolitan opera star Timothy Noble with Gold Company vocal jazz visionary Steve Zegree will delight you with a "Great American Songbook" program.

- Conservatory students will be featured in weekly recitals, plus the annual Student Scholarship Night, and will work as ambassadors of Bay View in the greater community.

- A collaboration with Great Lakes Chamber Orchestra featuring pianist-Tony Patterson with Chris Ludwa leading the orchestra on Gershwin's immortal "Rhapsody in Blue."

- The world famous Artie Shaw Orchestra will play Hall Auditorium in late June, we'll pull out the stops for the Fourth of July holiday, and Carrie Newcomer will return with Phil Gulley to bring a humorous and heartfelt concert of poems and parables in mid-July.

- In coordination with the Heart of Bay View, we will co-present one of the best known improvisational comedy routines, Second City. This marks a huge step and an enormous crowd is expected for the July 5 performance.

The only major change this summer will see the musical and opera switch positions. The opera will occur July 22-25 and the musical Aug. 5-7. We hope this will allow maximum preparation time for participants, including as many munchkins as we can fit on the stage!

The Festival web site, www.bayviewfestival.org will soon be updated with performance calendars, brochure info, and season ticket deals that will provide you with a summer full of opportunities to connect to history, one another, and the divine.

Outreach survey offers Bay View many suggestions

Continued from page 2

helping those within Bay View who need help, as well as communicating outreach activities/programs/opportunities to Bay View members.

- Support local sports teams by donating team wear with Bay View identity.

- Get the youth more involved through bake sales, special collections and special projects such as Habitat for Humanity

- Develop an interactive online resource bank where people willing to donate time and talent could list (and remove) their names, availability and contact information.

Communicating/publicizing outreach activities

- Place articles in The Town Crier and Petoskey News-Review featuring both individuals and organizations within Bay View providing volunteer services. An article could be written each week highlighting the outreach activities of a specific campus organization. For example: Woman's Council gives a scholarship to a student at Petoskey High School. Campus Club collected enough money to buy a truck load of food for the Manna Food Bank.

- Produce a brochure that spotlights Bay View's commitment to outreach, describes ongoing outreach activities, and explains how residents in both Bay View and the extended community can participate. This would include information currently provided piece meal in The Town Crier, scattered in the Bay

View Summer Program, or not currently publicized at all.

- Develop a section of the Bay View web site (or a separate web site) with content similar to that of the outreach brochure described above.

- Create a "This is Bay View" DVD that could be played as kiosk loop in local hotels, hospitals, real-estate offices, luxury trailer parks, senior centers, campgrounds, etc.

- Publish and distribute a community Resource guide listing Bay View organizations and groups along with appropriate contact information.

- Publish an outreach e-blast, or blog. Engage young people to write and contribute articles. Engage each organization on campus to share outreach-related items of interest.

Stakoe looking forward to new executive director post

Continued from page 1

the seat again.

Having served as chair of the local government committee and Assistant Majority Floor Leader, Stakoe knows Lansing and its leaders well. While in office he received several awards for his service, including Michigan Municipal League Distinguished Achievement Award 2004; Police Officer Association of Michigan Legislator of the Year 2005; Michigan Environmental Health Association Distinguished Service Award 2006; Michigan Arabian Horse Association Directors Award 2006; and Dads and Moms of Michigan Legislator of the Year 2008.

Though he and his wife, Carol, have lived in southeast Michigan all their lives, they have also been frequent visitors to the Petoskey area. They have been bringing their two daughters to northwest Michigan for many years to downhill ski in the winter and to enjoy all the best things Northern Michigan has to offer in the summer.

Their youngest daughter is a sophomore at Eastern Michigan University. Their oldest daughter attended Oakland Community College and is a full-time dental assistant.

"I couldn't have written a better job description if I'd written it myself," Stakoe said. "With my deep love of classical music and my wife's and my love of live theater, the idea of moving to an area we already like and are familiar with, and having access to so many cultural opportunities, was simply amazing."



"The definition of a good leader is someone who shares their own vision of the organization and their excitement with those around them . . . One of the great things about this position is that I share the enthusiasm for the organization and what the organization has to offer."

– John P. Stakoe

Stakoe said he and his family routinely take advantage of live theater and classical music performances in the Detroit area, and are looking forward to the offerings in Bay View in the summer.

Stakoe, who grew up in Dearborn and graduated from Dearborn High School, is no stranger to Northern Michigan. His family brought him to the Black Lake area as he was growing up. His brother, Joseph Stakoe, and his family have lived in the Petoskey area

for many years.

Prior to serving in the House, Stakoe was twice elected supervisor of the Charter Township of Highland, Mich., serving from 1996-2002. The township has a population of approximately 20,000 residents. He describes it as being similar to a city manager's position, managing staff and departments of building, assessing, planning, financing and public safety. He developed and managed an annual budget of \$7 million and wrote and provided oversight for a number of grant projects.

From 1977 through 1996, Stakoe served as a sergeant on the Milford Police Department, supervising patrol and dispatch functions.

Stakoe's education includes a Bachelor of Science degree from Eastern

Michigan University in 1975, with a Secondary Education Certificate. His teaching degree served him well when Stakoe was on the police force, where he ran the D.A.R.E. education programs. He then earned a Master of Arts degree from Eastern Michigan University in Criminology in 1996, and received additional professional training in 1993 at Northwestern University's management school for police administrators.

Stakoe is looking forward to his new role as executive director of Bay View and the new challenges he will face. He believes his style of management will benefit the staff at Bay View.

"The definition of a good leader is someone who shares their own vision of the organization and their excitement with those around them," Stakoe said.

"If you don't have the enthusiasm toward the organization and the excitement isn't within you, it's not going to be something that you can imbue in others. One of the great things about this position is that I share the enthusiasm for the organization and what the organization has to offer."

In addition to downhill skiing and classical music, Stakoe enjoys power walking with his wife, tennis, working out with weights – something he developed back when he was in the police academy – reading, and while he admits it's been years since he rode, he still enjoys horseback riding.

He and his wife have purchased a home in Emmet County and plan to settle in the area for many years to come.

Morning Council plans annual "Treasures in the Trees" marketplace July 17

Once again, we are seeking sellers for Morning Council's annual marketplace, "Treasures in the Trees" to be held Saturday morning July 17, 2010 in Fairview Park.

Any Bay View cottager, organiza-

tion, or friend can rent space to sell art, antiques, furniture or just too-good-to-toss stuff! Each seller is assigned a 20 by 20 foot booth. Sellers are responsible for setup, cleanup and pricing, and keep all proceeds.

Booth rental is \$30, payable to Bay View Morning Council.

If you would like to reserve a booth or have any questions, contact Nancy Foster at nancy.foster@verizon.net, or at (412)915-4914.



Silent sentinels

Covered with snow, Bay View cottages await spring and the return of their owners. (Town Crier photo)

Worship 2010: Music, bioethics and lots of stories

By Ned Dewire,
Director of Worship & Religious Life

During June, worship in Hall Auditorium begins Sunday, June 13 with the Rev. Louise Seipel.

“Lou” is an ordained United Methodist pastor in west Ohio, having served churches for 20 years, and is now Vice President of Community Properties in Columbus. This is one of the largest subsidized housing projects in the United States.

Lou was pastor for Shirley and Ned Dewire for many years.

On Sunday, June 20, Hall Auditorium worship will be led by Pastor Kelvin Lumpkin. He is founder of Abundant Life Christian Center in Sarasota, Fla. Kelvin is a member of the team that works with Jay Crouse in southwest Florida.

On Sunday, June 27, the Rev. Dr. Carol Bechtel will return. She teaches Old Testament at Western Theological Seminary. Her passion is linking scripture and music, so her theme will be “The Bible and Brahms’ Requiem.”

During July, the senior minister at Marble Collegiate Church in New York City, the Rev. Dr. Michael Brown, will preach at the 10:45 a.m. worship in Hall Auditorium on Sunday, July 4.



Ned Dewire

Michael had very significant ministries in The United Methodist Church before being called to Marble Church last year.

On Sunday, July 11, the Rev. Dr. Sergei Nikolaev, President of the Methodist Seminary in Moscow, Russia (and Professor of Evangelism), will preach. Sergei, a native of Russia, is a graduate of Southern Methodist University, Dallas. He will work with us, through the week, about the role of Christian Church in the global context.

The Rev. Dr. Philip Gulley, Quaker pastor and storyteller, will return to Bay View on July 18. He is a prolific writer and speaker and has his own PBS show in Indiana. Ballad singer Carrie Newcomer will come the same week. Phil and Carrie will perform together on Monday evening, July 19.

On Sunday, July 25, the Rev. Dr. Peter Storey of South Africa, will return to preach. Peter and his wife, Elizabeth, were at Bay View last year, and this year they have been invited by Chautauqua, so we will be sharing their visit.

Professor Gordon Wood, Brown University Professor Emeritus, will return to Bay View for the American Experience Week lectures, co-sponsored by Department of Education. Professor Wood was at Bay View a few years ago, and very well received. He will talk about the “Empire of Liberty.”

We start August with the Rev. Dr.

Tex Sample preaching on Sunday, Aug. 1. This is the week of the Christian Leadership Institute, when two theological seminaries co-sponsor a week with our Department of Worship and Religious Life. Tex is the storyteller on each lesson in the “Living the Questions” study series. On that Sunday morning, worship will be contemporary jazz, led by Bradley Sowash. He appears regularly on PBS’s “The Piano Guy,” and has done extensive writing in jazz for Christian worship.

On Sunday, Aug. 8, the Rev. Colin Honey, pastor in Melbourne, Australia, and one of the world’s leading biomedical ethicists, will preach. He will go to the Chautauqua at Lakeside from Bay View. He will work with us to apply faith to the big ethical questions.

On Sunday, Aug. 15, the Rev. Dr. Ian Lawton, from Christ Community Church, in Spring Lake, Mich., will preach. This will be the last week of the 2010 Assembly Season.

For postseason, on Sunday, Aug. 22, the Rev. Laurie Haller will preach. She is the United Methodist District Superintendent in Grand Rapids, Mich. She regularly does triathalons and has “runmomrun” for her email address.

On Sunday, Aug. 29, the Rev. David Kidd, long time Bay View cottager, will preach on the theme of “Conversations about Bay View and the Church.” Labor Day Sunday preacher will be the Rev. Doug Trebilcock, a new Bay View cottager.

Heart of Bay View campaign slated for summer

Continued from page 1

with Rod Slocum until Feb. 26. At this writing, Rod plans to introduce John to the community and provide transition, then head for Florida to watch spring training.

When you can, please stop by the Wade Administration Building and meet John Stakoe. We look forward to his leadership and fellowship with the Bay View community.

The Heart of Bay View campaign to fund needed improvements to John M Hall Auditorium will take place this summer. At the end of the summer, the project is scheduled to move on to design and construction. Thus, this summer's campaign is important and is Bay View's one opportunity to do what is needed to improve sound, safety and convenience for those participating in and attending worship and performances in the "Heart of Bay View." The John M Hall Auditorium is the center of Bay View's worship, music and performing arts and the board urges all to support this capital fundraising effort.



President Ternan

The midwinter meeting at Metro Airport in Detroit started with meetings of program directors with Rod Slocum and John Stakoe. Then there was a joint meeting with them and the trustees. The regular trustee meeting took place on Saturday, Feb. 6, with

many subjects discussed and actions taken on several important matters.

As you know, last September the board adopted a modified fee schedule for leaseholders which included a phase-in over three years. In implementing the first phase on the December winter bill, an unanticipated distribution problem became apparent with many leaseholders charged substantially higher or lower fees in the first year of the transition. This was caused by changing the basis for the first year charges for the ad valorem portion of the fees from the value of lots and cottages to the value of lots only.

In order to correct the distribution problem and to assure normalization of the phase in of the new fee policy of one-third of the change in each of the three years, the board decided to make adjustments in this spring's bills. Some fees will decrease or increase from the fees charged in December, 2009. This is an across the board adjustment to ensure a smooth systematic three year phase in of the new policy. The total fees charged and collected by Bay View for this year are not increased.

The board continues to work in earnest to strengthen cash and financial management. Several steps have been taken and more will follow to standardize statements, accounting and reporting. A new audit committee has started its work of monitoring financial accounting and approving financial procedures, policies and statements. We expect new procedures to be implemented to improve cash handling and accounting.

Bay View's investments have been moved to The Investment Fund for Foundations (TIFF), which is designed for conservative and sound investments for foundations and nonprofit corporations like Bay View.

The board approved a strategic plan for Bay View which should be on Bay's web site in March for all members to read. It sets forth seven specific goals and includes strategies and dates to reach the goals. The executive director and the Long Range Planning Committee, working closely with program committees and the Finance Committee, are responsible to articulate and recommend to the board what Bay View's programs should be, the costs, and a plan for funding.

A Development and Gifts Committee has been established to work with the board and the executive director in formulating policies and practices which will, in time, provide a program for charitable giving and also reduce multiple and sometimes excessive requests to support Bay View's many programs. The executive director will be responsible for overseeing and administering development efforts. An objective is also to provide adequate funding for all programs of Bay View.

We are working with consultants and attorneys on the issues of tax assessment by Bear Creek Township and electrical charges by the City of Petoskey. We are hopeful more information might be shared by summer.

Peace and goodwill to all. Enough of winter, let's meet soon in Bay View.

Fifth "Bells Around the Bay" concert May 23 in Hall Aud.

You are invited to come to the fifth "Bells Around the Bay" concert that will take place at 3 p.m. Sunday, May 23, at John M. Hall Auditorium.

The tradition of having bell choirs in Bay View initiated by maestro Donald Allured continues on. In fact, three of the four participating bell choir directors have rung under Don's capable leadership.

The first "Bells Around the Bay Concert" was in 1999. This year four choirs join together for the first time.

Participating bell choirs are Carillon Ringers of the Petoskey United Methodist Church directed by Jane Andrews; Praise Ringers of the Zion Lutheran Church in Petoskey directed by David Pugh; Kirk Ringers of the First Presbyterian Church in Harbor

Springs directed by Peter Sims; and the Pilgrim Bell Ensemble of First Congregational Church of Christ in Charlevoix directed by Roger Waters.

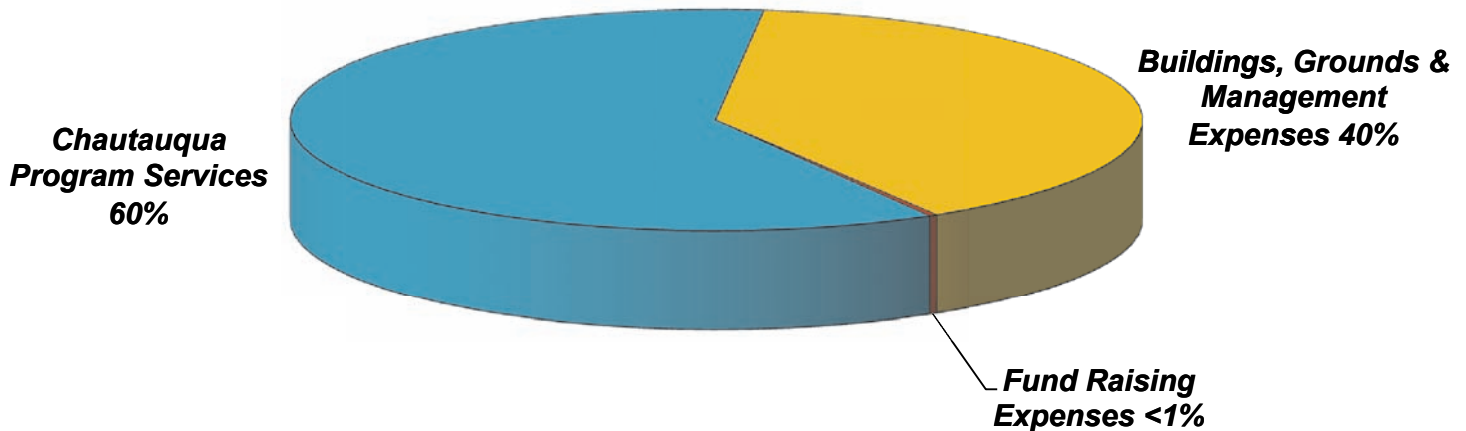
An entertaining program centering on the theme of Americana will delight all ages. A free-will offering will be taken. The "Bells Around the Bay" concert will be a wonderful way to begin your 2010 season in Bay View.

Treasurer's Report

Financial Statement 2008-2009



Bay View Association 2009 Consolidated Uses of Funds



Bay View navigating financial storm

By Barbara Merrell
Bay View Treasurer

By the end of the 2009 fiscal year, Oct. 31, virtually all of the endowment accounts were back above the original gift amount. This allowed the utilization of some endowment income in 2009 operating results that were at break even. The emergency budget reductions that all areas made last winter contributed to this solid result.



Barbara Merrell

On the recommendation of the Investment Advisory Committee, the board of trustees approved moving the management of the Association's investments to The Investment Fund for Foundations, TIFF, an investment firm that manages money for non-

profit organizations. This transfer occurred at the beginning of November.

TIFF's investment goal is to generate a payout ratio of 5 percent on the original investment, plus 2 percent or more to offset inflation. You can find out more about TIFF on its web site www.tiff.org.

Separately, the trustees removed all board imposed restrictions on the utilization of investment income. Over the years, previous boards added restrictions to protect the purchasing power of endowments. While the protection of future purchasing power is important, all agree the first priority is to maintain our current strong program.

This summer the various committees involved with Bay View's finances will study how to comply with the Uniform Prudent Management of Institutional Funds Act (UPMIFA),

which was signed into law by the Governor of Michigan on Sept. 10, 2009.

To align with the new fee structure, the comptroller's area will be redesigning Bay View's financial reports. The above pie chart shows the consolidated expenditures spent on the Chautauqua Program versus the other two reporting categories in 2009.

The Buildings, Grounds & Management expense category will be allocated between the Chautauqua Program and Rent. This will be an assignment for the Finance Committee this summer.

The redesign of our financial reports will be evolutionary, so bear with us as we work to produce new formats that are meaningful.

And last but not least, thank you to the many committee members who donate their time and ideas to strengthening Bay View's finances.

**Bay View Association
Operations Revenue & Expense Report**

Department	2009	2008	2007	2006
Revenues				
ASSEMBLY	100,883	95,047	94,384	90,516
PERFORMING ARTS	341,122	357,325	379,723	335,454
RECREATION	187,879	200,811	185,007	161,130
EDUCATION SEMINARS	31,762	46,990	23,228	23,340
ADJUNCT PROGRAMS	18,716	22,673	16,211	21,732
ADMINISTRATIVE OVERHEAD	673,864	719,334	687,106	687,069
BUILDINGS & GROUNDS	409,122	435,715	407,071	429,241
COMMUNITY SERVICES	252,651	252,999	247,573	224,643
Total Revenues	2,016,000	2,130,894	2,040,303	1,973,125
Expenditures				
ASSEMBLY	100,413	95,047	93,737	90,221
PERFORMING ARTS	339,007	357,325	392,851	368,098
RECREATION	190,546	218,503	199,781	161,121
EDUCATION SEMINARS	31,710	46,990	23,228	19,651
ADJUNCT PROGRAMS	17,064	21,770	14,213	21,732
ADMINISTRATIVE OVERHEAD	682,373	733,372	674,798	680,808
BUILDINGS & GROUNDS	425,010	443,841	397,796	395,799
COMMUNITY SERVICES	229,876	224,570	254,329	235,906
Total Expenses	2,016,000	2,141,418	2,050,733	1,973,339
Excess Revenue Over Expense	-	(10,524)	(10,430)	(214)

Despite economy, Bay View in sound financial shape

By David Hartnett
Bay View Comptroller

With all the uncertainty in the global economy and financial markets this past year, the Bay View Association was still able to end the year in sound financial condition.

The Consolidated Statement of Activities for Bay View (see page 9) for the fiscal year ending Oct. 31, 2009 shows an increase in net assets, or surplus of \$713,212 on total revenues of \$3.08 million.

Donations accounted for \$568,855 of the total revenue and investment

earnings (interest, dividends, net realized and unrealized gains) accounted for \$455,987 or 14.8 percent of total revenues.

As can be seen on the Operations Revenue and Expense Report (above), operations ended the year breaking even with both operating revenues and expenses totaling \$2.016 million.

Included in the report but not shown were transfers of \$108,503 from



David Hartnett

the Endowment, Capital and Designated Gift funds to support program activities.

In February 2009 the board of trustees amended the budget, cutting expenses and revenue forecasts to be able to react to the uncertain economic outlook at the time. The results for 2009 show revenues were down \$114,894 compared to 2008 and expenses were reduced by \$125,418 when compared 2008.

Other noteworthy financial highlights in 2009 include:

Continued on page 9

Bay View Association Consolidated Statement of Activities

	<u>2009</u>	<u>2008</u>	<u>2007</u>	<u>2006</u>
Revenues				
Support and Contributions	568,855	687,108	420,676	332,330
Interest and Dividend Income	82,898	208,912	208,207	163,686
Net Realized and Unrealized Gains on Investments	373,089	-	319,911	290,426
Products, Services and Assessments	<u>2,054,948</u>	<u>2,028,201</u>	<u>2,701,648</u>	<u>1,972,218</u>
Total Revenues	<u>3,079,790</u>	<u>2,924,221</u>	<u>3,650,442</u>	<u>2,758,660</u>
Expenses				
Net Realized and Unrealized Losses on Investments	-	1,352,918	-	-
Program Services	1,423,393	1,591,626	1,608,215	1,487,395
Management and General	936,194	940,060	1,313,841	1,282,250
Fund Raising	6,991	51,439	30,436	10,840
Total Expenses	<u>2,366,578</u>	<u>3,936,043</u>	<u>2,952,492</u>	<u>2,780,485</u>
Increase (Decrease) in Net Assets	<u>713,212</u>	<u>(1,011,822)</u>	<u>697,950</u>	<u>(21,825)</u>

Continued from page 8

- The downturn in the economy and cold summer impacted the Recreation program more than the other programs. Revenues and attendance were down across the board. On the positive side, Recreation expenses of \$190,500 were in-line with budget and were \$6,240 less than last year.

- Revenues from the musical "A Funny Thing Happened on the Way to the Forum" were \$21,270 as compared to a budget of \$26,000; and the Revue, "Broadway Our Way," earned \$17,522 to a budget of \$16,500. The opera once again did well with revenues of \$15,225 to the budget of \$14,000.

- Wednesday Festival concert revenues of \$8,200 were more than twice last years total and Sunday Vespers revenue of \$47,072 represented an 8.8 increase over 2008. The "On the Rocks" pops concerts; Backbeat and the Drifters Tribute Band brought in

See CLOSING, page 10

Bay View Association Consolidated Statement of Financial Position

	<u>2009</u>	<u>2008</u>	<u>2007</u>	<u>2006</u>
ASSETS				
Current assets:				
Cash	204,886	422,162	102,652	833,202
Investments, at market	3,321,031	1,039,027	1,964,189	907,331
Accounts receivable	53,651	74,258	59,037	73,619
Prepaid Expenses	4,505	8,548	22,759	3,491
Total current assets	<u>3,584,073</u>	<u>1,543,995</u>	<u>2,148,637</u>	<u>1,817,643</u>
Non-current assets:				
Investments, at market	1,227,764	2,584,504	2,909,898	2,571,616
Total non-current assets	<u>1,227,764</u>	<u>2,584,504</u>	<u>2,909,898</u>	<u>2,571,616</u>
Total assets	<u>4,811,837</u>	<u>4,128,499</u>	<u>5,058,535</u>	<u>4,389,259</u>
LIABILITIES AND NET ASSETS				
Current liabilities:				
Accounts payable	4,525	74,934	193,058	63,915
Accrued liabilities	10,525	48,414	-	-
Deferred Revenue	-	-	-	11,825
Deposits	8,000	5,500	-	-
Total current liabilities	<u>23,050</u>	<u>128,848</u>	<u>193,058</u>	<u>75,740</u>
Net assets:				
Unrestricted	603,322	158,881	152,359	79,355
Temporarily restricted	1,295,757	1,087,684	1,794,908	1,386,396
Permanently restricted	2,889,708	2,753,086	2,918,210	2,847,768
Total net assets	<u>4,788,787</u>	<u>3,999,651</u>	<u>4,865,477</u>	<u>4,313,519</u>
Total liabilities and net assets	<u>4,811,837</u>	<u>4,128,499</u>	<u>5,058,535</u>	<u>4,389,259</u>

Closing the books on another successful Bay View season

Continued from page 9

revenues of \$9,400 and \$10,400 respectively.

- Appreciation Night contributions were down dramatically in 2009 with revenues of \$23,026 compared to budget of \$35,000 and 2008's total of \$33,953.

- Employee healthcare costs were reduced substantially in 2009 with the redesign of the employee healthcare plan to include a Health Reimbursement Arrangement (HRA). The employees' coverage did not change from the prior year but the cost to Bay View was reduced by \$10,427 over the prior year and \$17,896 to budget.

- At the Oct. 9, 2009, board of trustees meeting the board decided to hire The Investment Fund for Foundations (TIFF) to manage the Bay View Endowment and Capital Funds. The decision was based on the recommendation of the Investment Advisory Committee.

The transfer process began the last week of the fiscal year which accounts for the large amount of funds classified as short term investments as reported on the Consolidated Statement of Financial Position, Page 10.

- The Bay View Association Endowment fund ended the year with a balance of \$3.1 million, a gain of \$368,395 in value. With the rebound in the financial markets this past year, the endowment fund generated an investment return of 13.9 percent for the fiscal year as compared to last year's loss of 23.3 percent.

- Capital Fund also did well ending the year with \$1.16 million an increase of \$68,460. For the fiscal year, the Capital fund's investment return was 12.9 percent compared to a loss of 20.7 percent for last year.

Bay View Capital Fund Value as of October 31, 2009

CAPITAL FUNDS:	Fund Value
Bay View Memorial Fund	20,210
Memorial Gardens Perpetual Care Endowment	97,918
Bay View Scholarship Fund	37,568
Harold L. Child Capital Fund	43,937
Crouse Memorial Chapel Maintenance Fund	37,588
Carey Perkins Memorial Museum Fund	21,700
Decker Memorial	32,018
Heseltine Pool Maintenance Fund	41,654
Insurance Reserve Fund	53,228
Major Building Maintenance Fund	469,946
Shoreline/Sewer Major Maintenance Fund	117,828
Individual Fund Values Under \$20,000 Combined	189,724
Total Capital Funds	\$ 1,163,319

In conclusion Bay View remains in solid financial condition and is holding its own during this unprecedented economic downturn. The Association still has financial challenges and we will work to keep costs in-line and strive to build the programs to better serve the Association as a whole.

Bay View Endowment Fund Value as of October 31, 2009

ARTS ENDOWMENT:	Fund Value
Virginia Galvin Crouse Visiting Artist	214,154
Charlotte & Wesley Hager Memorial for Music Sch	92,332
Aura Stephenson Scholarship	84,465
Wardall, Bloch, Hazelton	59,383
Charlotte & Wesley Hager Memorial for Music Scholarships	57,544
Paul & Martha Cook Violin Scholarship	42,106
Music Scholarship Endowment	33,276
McCune Memorial Scholarship	26,255
Fred A. Stenning Memorial Scholarship	23,571
Dr. Felton & Mary Olive Davis Green Scholarship	23,213
Dr. Eleanor Larsen O'Neal Scholarship	23,176
Bay View Arts Endowment	20,083
Legacy Funds	173,742
Total Arts Endowment	\$ 873,300
HISTORIC PRESERVATION:	
Norma G. Sleight Archives	72,952
Bay View Historic Preservation	61,749
Bay View Archives	20,335
Legacy Funds	14,004
Total Historic Preservation	\$ 169,040
GENERAL ENDOWMENT:	
Bay View Endowment	869,191
Vanden Belt Endowment	40,061
Legacy Funds	18,663
Total General Endowment	\$ 927,915
EDUCATION AND WORSHIP ENDOWMENT:	
Edith Buffett Worship	93,339
Colaw Lectureship	83,788
Kimes Lectureship Corpus	78,397
Norma G. Sleight Library	75,306
Norma G. Sleight Education	70,767
Bay View Library	65,849
Heritage Fund	60,496
Worship Endowment	57,013
Doris Bailey Baker Lectureship Endowment	49,285
William J. Howell Family Lectureship Endowment	48,711
Ralph E. and Margery J. Ray	36,914
Dietrich Bonhoeffer Memorial Lecture	34,667
Butterfield Family Endowment	33,023
Joyce Bailey Jones Endowment	31,117
Robert and Patricia Jenkins Worship Endowment	30,087
Education Endowment	29,586
Zelda Heiney-Rathweg Endowment	23,117
Louise W. Garman Lectureship	19,041
Legacy Funds	98,848
Total Education and Worship Endowment	\$ 1,019,351
RECREATION ENDOWMENT:	
W.T. Maxson Woods Memorial Fund	73,909
Ernie Gray Recreation	36,036
Total Recreation Endowment	\$ 109,945
Total Invested Funds	\$ 3,099,551

Charts and Tables by David Hartnett

Rec 2010 focus: Youth development

By Renée Allen
Recreation Director

Warm summer breezes coming across the bay; it's not that far away. Bay View recreation continues to be that "special place" for kids in the community. This season will be no different than the last hundred.

A kid's bike rodeo to promote safety will be a new activity this summer. The heritage and tradition of the favorite Friday events will continue. The Fawn log cabin is complete and co-directors have special themed events planned.



Renée Allen

The 2010 youth recreation event brochure will soon be available on the Bay View website. If you are in need of employment forms you may also find them there, as well as registration forms for club sign-up.

Community members please take note of a new section listed on the website under recreation that lists the volunteer needs for recreation in the community. Last year several parents planned, promoted and shared new skills in orienteering with kids and planned a triathlon that was very well attended.

These events bring added value to the recreation program and cannot happen without the Bay View sharing that just happens naturally. A big thank you on behalf of the community to these kind-hearted parents!

This year's program focus will be on youth development. If you have any skills to share with staffers or campers in outdoor education, youth development, crafts, or pre-season training, please contact, renee@parishon-line.tv.

See you in June for another season promoting a safe, fun-filled recreation program and lasting memories for all!



Billy, Edward and Ellie Solms (front) and Nicolas and Luke Zannino enjoy the new Fawns' playground cabin. (File Photo by Cate Zannino)

Check out "log cabin"; Rec could use your help

In October we dedicated our "log cabin" built by John Liddicott, Bob Shier and Steve Watson. It really is a work of art both inside and out. Glenna Atkinson and I look forward to a fun season with the Fawns.

We are planning our pioneer activities for Week 4, July 26-29, and would welcome your ideas and, of course, help. We could use your help sewing, basket weaving, doll making, cooking over an open fire, making toys, or carving just to name a few activities. We could also use some items to make our activities possible: yards of calico prints, thread, needles, feathers,

wooden beads, leather, basket weaving supplies, an iron kettle, potting soil, seed packets (pumpkin and sunflower), wooden disks, quarter-inch wooden dowels and wooden spoons.

Please contact Barb Turkal (turkals@hotmail.com) with your ideas, specific talents or "just want to help." Don't forget to make one of your first visits in Bay View to see the Fawns log cabin. We are also actively pursuing nature ideas, activities, and items to promote the use of our "Nature Nook."

Thanks and see you in Bay View.

– Barb Turkal

Rec has openings for swim director, program director

Bay View Recreation has openings for swim director and program director. Both require prior Bay View recreation working experience. If you are interested or want further information, email renee@parishon-line.tv.

Swim Director: Must be WSI certified, CPR and First Aid certified, LG certified, have Red Cross

swim teaching experience, management skills and strong verbal skills and have familiarity with the Bay View recreation program.

Programming Director – Requires strong verbal skills, ability to work well with youth counselors, event coordination skills and management, CPR certified and First Aid certified.

Woman's Council eyes active season in 2010

By Joyce Giguere
Bay View Woman's Council President

The Bay View Woman's Council and Morning Council will open with the Annual Luncheon at the Bay View Inn at 12 p.m. Thursday, June 24.

Our program chair, Bev Ragland, has planned a wonderful program given by Elizabeth Blair and her "Fine Pearls." She will dazzle us with her beautiful collection of lovely pearls and her knowledge of these magnificent jewels. We invite all to come and be entertained and enthralled with the history and stories of pearls in our culture.

Tickets can be obtained from our very capable chair of the luncheon, Pat Sehr, phone number 231-347-3187. Also, her cell phone number is 231-633-052. Tickets are \$20 and Pat recommends that you get your tickets early. Even if you do not pay for your tickets immediately, she suggests that you call and make the reservation to ensure you have a spot for this great day.

Other interesting speakers at our Tuesday afternoon teas will be Rand Shakelton, "Antartica Survival"; MaryEllen Lapp, "Colors"; Crooked Tree Breadworks, "Yummy"; Jim Lenfestey, "Poet in Residence"; and Jan McDermott, "Good for the Soul."

Our final meeting will be the carry-in-luncheon, chaired by Jeri Sutton; installation of officers and a performance from our scholarship recipients.

On Tuesday, July 20, the Woman's Council will have the Grand Bazaar under the wonderful leadership of Ginny Smith and Rose Cooper. The funds raised from this activity will be used to maintain the Woman's Council Building, contribute to scholarship funds for our music students and Petoskey High School student, and to share with other groups on campus and in the local community.

Everyone is encouraged to bring to Bay View treasures for the bazaar for either the cottage treasures booth or the silent auction. Also, Christmas and/or any holiday decorations and items are requested for the holiday booth as well. The Bay View sweaters are always a big, big hit and any knitter who can make them would be greatly appreciated. A very popular booth last year, especially for the guys, was the "sports equipment sale booth." Anyone



Helen Hagey, a board member of the Woman's Council, presents a check of \$1,000 to Peggy Child Smith and Norm Wells, co-chairs of the "Heart of Bay View Campaign" for the John M. Hall Auditorium. Helen also donated 10 percent of the proceeds from her garage sale to the campaign. She plans to hold another garage sale next summer. Contact helenhagey@charter.net if you wish to join her in selling as well as donating 10 percent of proceeds to the campaign. (Courtesy photo)

wishing to donate ski equipment, fishing equipment, etc., would also be greatly appreciated.

There will again be a Crop Walk on Saturday, July 26, and the Red Cross Joyce Bailey Jones Blood Drive will be Wednesday, July 14. Chairing this annual blood drive will be Jan McDermott and Ellen Sue Liestenfeltz.

Ladies may rent rooms on the second floor of the Woman's Council Building during the Bay View season. If you have friends or family coming for a few days or a week or a season, consider the Woman's Council as their inn of residence. For early reservations contact our Woman's Council House Hostess, Mary Jane Williams, 734-424-0892. All women from Bay View and the surrounding communities are invited to join us. The first board meeting will be at 8:30 a.m. Monday, June 21.

Panhellenic members notice

Bring your charm bracelets to Bay View this summer. Our program for the last Panhellenic meeting in August will be "Charm Bracelet Memories."

Evelyn Hall birthday party – Come one, come all...

To the party
To celebrate Evelyn Hall's
One hundred and twenty years

At half past six
In the month of June
On the twenty seventh day

In Memory

Bay View extends sympathy to families of loved ones

The love and sympathy of our Bay View community is extended to the families of those who died in the past year:

Lucille Vanderlinde
 Gratia Kemp
 Irma Thomas
 Winn Hinman
 Lou Ann Seely
 Helen Siskonen (mother of Phyllis Scheffler)
 Leonard Slutz
 John A. Arnould
 Caroline Russell Gregory
 Omer LeVasseur

Keith Whitehouse
 Richard McDevitt, Jr.
 T. Willard Hunter
 Kathleen Mary Topolsky (Mother of Courtney Blackburn)
 Robert Blok
 Ruth Alice Williams
 William L. Porter
 Elizabeth Russell
 James W. Brown
 Marian Dressler
 Vaughan Tufts
 Dr. Paul Cook (former Bay View President)
 Harold "Doc" McCaughrin

Second Mid-Atlantic Reunion attracts 15

The second annual Mid-Atlantic Mid-Winter Reunion for all Bay View Campus Club members was held on Valentine's/President's Day weekend, February 12-15, in Williamsburg, Va.

Although the weather at first was daunting, Williamsburg was clear of snow and 15 members from Michigan, Ohio, Maryland, North Carolina and Virginia enjoyed strolling the streets of the restored Colonial area and experiencing 18th century life.

Attendees caught up with each other during a wine and cheese reception Friday night hosted by Darrel and Sue Shinn, followed by dinner at James Shields Colonial Tavern on Duke of Gloucester Street. Saturday lunch was held at Graham and Helen Hagey's home, featuring the area's famous Pierce's BBQ.

Historical Museum exhibit features quilts, coverlets

The Bay View Historical Museum's 2010 exhibit will feature quilts and coverlets. The museum's collection reflects both decoration and function.

In the Victorian age of the 1890's, decorative crazy quilts were a popular form of art handwork with the use of an abundance of silks and satins sewn and embroidered into subjects of interests significant to the

During the day, participants browsed the colonial area at their leisure, but joined together for a group picture taken for the Petoskey News Review at the newly opened Williamsburg Kilwin's, where chocolate lovers celebrated Valentine's Day.

That evening, the Hageys held a reception at their home before dinner at the trendy Alize Restaurant. On Sunday, the group attended the Williamsburg United Methodist Church with the Hageys where a short program on Bay View was presented to the Sunday School class by Sue Shinn.

Afterward, the group went to brunch at the historic Old Chickahominy House. Fun and fellowship was had by all and plans for the next Mid-Atlantic Reunion in 2011 are already under way!

quilter and her family. In contrast, Depression era quilts were made of plainer cotton and wool fabrics and used for warmth, reflecting the economy of the time.

This summer's program will provide visitors an opportunity to view the museum's collection and learn more about quilt making. Children's activities and tours will be featured.



Walkers to fight world hunger on June 26

Your CROP dollars are at work.

In Haiti, Church World Service is on the scene at Santa Domingo, providing food, water, baby and health kits for earthquake victims.

Manna provided over 125,000 people with food in 2009. That's a 12 percent increase over 2008. The many agencies under Manna's umbrella have received 1.7 million pounds of food. That's an increase from 1.5 million in 2008.

Even though needs continue to rise and we sometimes feel like we're filling a bucket with a teaspoon of water at a time, consider this quote from Anne Frank's diary: "How lovely to think that no one need wait a moment: We can start now, start slowly changing the world! How lovely that everyone, great and small, can make a contribution."

We're changing the world a step at a time each year we participate in the Petoskey - Bay View CROP Hunger Walk. Please mark your calendars to join us once again Saturday, June 26.

Chorale plans two Bay View May concerts

The board members of the Northern Michigan Chorale and its director, Peter D. Sims, are pleased to announce some exciting changes for their spring 2010 concerts.

The 28th Annual Spring Concerts are scheduled for 7:30 p.m. Friday, May 7, and 3:30 p.m. Sunday, May 9, at John M. Hall Auditorium.

Adult tickets are \$10 and student (under 18 years of age) tickets are \$7. Tickets can be purchased at the Petoskey Chamber of Commerce, from Chorale members and at the door. Tickets will go on sale in mid-April (no absolute date has been determined).

The theme of these concerts is ecumenically sacred, and features Diane Bish's, "Morning Has Broken." This arrangement has as its setting, nine favorite hymns with connecting narrations.

Miss Diane Bish is the former organist and music director at the famous Coral Ridge Presbyterian Church in Ft. Lauderdale, Fla., and her choral arrangements are exciting to sing and to hear.

One hundred plus singers have begun rehearsals and a special children's choir and a team of dancers will also be a part of the presentation of "Morning Has Broken."

Magazine has space

The summer 2010 Issue of the Bay View Literary Magazine has space for a few more stories, essays, and poems, particularly for the section "Voices of Young People."

Please send to Marjorie Bayes, 200 Rampart Way, #108, Denver, CO 80230, or send by email to bayeswashburn@mac.com .



Is it frozen?

Open water is visible in this photo of Little Traverse Bay taken Feb. 3. The bay was officially declared frozen Feb. 13, which is later than normal, with the ice at that time extending to Nine Mile Point. It has been a mild winter in Bay View, not a lot of snow and no bone-chilling cold like last year. Temperatures have been consistently in the 20s and 30s. Most of the snow on the ground fell in December, and has not melted. (Town Crier photo)

The John M. Hall Vespers Concerts Ticket Order Form



\$54 for 9 Concerts, a 40% savings over the single ticket price!

A special offer only for Bay View members – order now and save money on 2010 John M. Hall Vespers Concerts tickets.

This is a one-time offer for Bay View members only. To take advantage of this special offer, your order must be postmarked by May 15, 2010. After that time, Vespers tickets will be available from the Bay View Box Office for \$10 each, or online for the same price plus a \$1.50 a ticket service charge. The nine-concert package will be \$70. Vespers tickets are \$12 at the door.

Number of packages _____ X \$54 \$ _____
 Shipping and handling (if desired) \$ _____ 3
 Total: \$ _____

Name _____
 Address _____
 City _____ State _____ Zip _____
 Phone _____ Email address _____

- My check made payable to “Bay View Association” is enclosed.
- Please charge my credit card:

Card Number _____ Exp. _____

Signature _____

Tickets held at Bay View Business Office unless you enclose shipping charge.



Mail to: Bay View Association
 P.O. Box 583
 Petoskey, MI 49770



Not in your hands: The future is on the computer

If you are reading this Midwinter Bulletin on a dead tree, please consider switching to the Bay View Express electronic document distribution system.

In fact, we strongly urge everyone to switch to Bay View Express immediately. A big reason is cost. For example, last fall President Ternan sent out a letter introducing new Bay View Executive Director John Stakoe, and also explaining the new fees and taxes structure.

It cost Bay View \$973 for this mailing alone, and that doesn't include the cost for the time spent by Bay View employees preparing the mailing. Throw that in and the cost is well over \$1,000. That's over \$1,000 just for one mailing.

You can be certain of few things in life, but one of them is that the cost of mailing is not going to go down. It will only go up, so such mailings will be even more costly in the future.

Fortunately, we have an alternative that has almost no

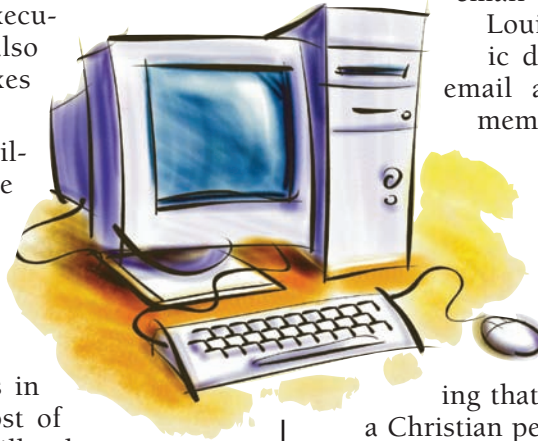
cost – online distribution. Bay View is far behind the rest of the world in this regard, but we are trying to catch up as fast as possible.

We can't do that without your help, however.

To sign up for electronic distribution, just email louise@bayviewassociation.org and Louise will put your name on the electronic distribution list. There may be several email addresses for yourselves and family members.

When letters and communications are sent via email, we will only U.S. mail to those who have not given us email addresses.

This movement toward online documents is not driven by cost alone. It is a way to continue fulfilling that part of Bay View's mission "to provide a Christian perspective in a changing world." Online is the way the world is changing. In the future, Bay View's perspective needs to be presented online, not just on paper, so our message remains vibrant and is not left behind. Thank you!



of The United Methodist Church

Box 583 • Petoskey, MI 49770

2010 Mid-Winter Bulletin