

veterinary technology for life

Eickemeyer®

www.eickemeyer.com

Veterinary Ophthalmology Catalogue



Telephone +49 7461 96 580 0



173660



17366001



17366002



17366003



173646



173661

Slit Lamp KOWA SL-17

KOWA's latest portable slit lamp, the SL-17, provides optimum stereoscopic observation with selectable magnifications and slit widths within a compact, lightweight, portable unit. With its non-slip ergonomic grip, the SL-17 provides maximum operator comfort during lengthy examinations.

- Ergonomic and lightweight, only 790 g
- Continuously variable LED illumination from 10K to 20K lux
- Choice of 10x and 16x magnifications
- 4 slit widths: 0.1 mm, 0.2 mm, 0.8 mm and Ø 12 mm
- Spot illumination: Ø 1 mm, Ø 5 mm, Ø 12 mm
- 1 mm slit length for observing the anterior chamber flare
- Built-in cobalt blue filter
- Standard AAA batteries for up to 280 minutes operation

Technical Data

- Interior angle: 13°
- Working distance: approx. 80 mm (at 16x magnification), approx. 100 mm (at 10x magnification)
- Field of view: Ø 10 mm (at 16x magnification), Ø 15 mm (at 10x magnification)
- Viewing distance: 50–72 mm
- Eyepiece dioptic adjustment: -8 – +5D
- Slit projection angle: horizontal, ±60°
- Power input: DC 4.8-6.4 V (4 AAA batteries)
- Dimensions (W x D x H): 22 x 9.5 x 22.5 cm
- Weight: 790 g (incl. batteries)

Article

173660	Slit Lamp KOWA SL-17, white
17366001	Slit Lamp KOWA SL-17, pink
17366002	Slit Lamp KOWA SL-17, aqua blue
17366003	Slit Lamp KOWA SL-17, green
173648	Slit Lamp KOWA SL-17 iPhone 6 Adaptor
173645	Slit Lamp KOWA SL-17 iPhone 5s Adaptor
173646	Slit Lamp KOWA SL-17 iPhone 4s Adaptor
173647	Slit Lamp KOWA SL-17 Samsung Galaxy S4 Adaptor
173661	Slit Lamp KOWA SL-17 Case
17354001	Slit Lamp KOWA SL-17 Video Adaptor
17354006	KOWA SL 15/17 Slit Lamp Pentax Q Digital Camera Mount

Eickemeyer®

*Quality equipment
for your practice*

HEINE® HSL 150 Slit Lamp

- Compact and light-weight, the portable HSL 150 is ideal for situations where a full-size slit lamp is not available or convenient
- Suitable for the examination of the anterior segment

Features

- Slit size adjustable from 0.2 x 4 mm to 10 x 14 mm
- 6x magnification
- Blue interference filter (FITC), can be selected for corneal examination
- Multi-coated optics for maximum light transmission
- 3.5 V XHL xenon halogen technology for bright, white light comparable with the brightness of a classic slit lamp
- The HSL 150 instrument head weighs just 70 g, the lightest slit lamp of its kind
- Compatible with 3.5 V HEINE® handles

Article

173543	HEINE® HSL 150 Slit Lamp, 3.5 V
17354302	HSL 10 x Loupe Attachment <ul style="list-style-type: none"> • 10-fold magnification when combined with HSL 150 loupe • Increased working distance with a large field of view

17354302



173543

HEINE® BETA 200 Ophthalmoscope

HEINE® optimises the Gullstrand principle with aspherical optics (separation of illumination and observation beam). Corneal and iris reflexes are eliminated, a full view is guaranteed even with small pupils.

- XHL Xenon Halogen Technology provide a bright, white light
- 6 apertures with separate red-free filter
- Crossed linear polarising filter
- Recessed, multi-coated viewing window avoids stray light
- Soft orbital support that protects the users' glasses and steadies the instrument due to ergonomic shape
- Optimal working distance of 4–5 cm (from the eye)
- Fits HEINE® handles (see Diagnostic section)

Article

301135	HEINE® BETA 200 Ophthalmoscope, 3.5 V
--------	---------------------------------------



HEINE® BETA 200 LED Ophthalmoscope

Superior aspherical optics now with LED HQ illumination.

- LED in HQ: The new standard in LED illumination defining optimal light intensity, homogeneity and colour rendering.
- Exclusive dustproof design protects the precision optical components and ensures maintenance-free operation.
- Optical components are flush-mounted on a cast aluminum frame, eliminating misalignment and making the instrument shock-resistant.
- The BETA 200 LED has virtually unlimited hours of working life (up to 100,000 hours).
- Range of lenses: 27 lenses from -35D to +40D, without macula aperture (pinhole).
- Exclusive continuous brightness control between 100% and 3% (patent pending).
- No stray light due to the recessed, multi-coated viewing window – eliminates distractions.
- Precise one-hand control of the instrument.
- Ergonomic design offers flexibility while examining.
- Suitable for large as well as small or undilated pupils.
- The full functionality of the BETA 200 LED is guaranteed with the current BETA Rechargeable Handles and the EN 100 Wall Unit.
- 5 Year Warranty

Article

300137	HEINE® BETA 200 LED Ophthalmoscope
--------	------------------------------------





302555



301146



302046



302635



302555

Ophthalmoscope WELCH ALLYN® PanOptic	
<ul style="list-style-type: none"> • Makes observing conditions such as hypertension, diabetic retinopathy and papilledema much easier to identify • Improved working distance between veterinarian and patient <p>*WELCH ALLYN® to HEINE® Handle Adaptor (302046) available *Spare bulbs</p>	
Article	
301145	<p>WELCH ALLYN® PanOptic Ophthalmoscope</p> <ul style="list-style-type: none"> • Provides a 5x larger view of the fundus compared to a standard ophthalmoscope in an undilated eye • Enables a 25° field-of-view vs, the standard 5° field-of-view • Increases magnification by 26 % over a standard scope • Dynamic Focusing Wheel: Adjusts the focus in a continuous, smooth action for more precise control and optimum view • Focusing range of -20 to +20 diopter
302555	<p>HEINE® BETA L Rechargeable Handle, 3.5 V</p> <p>If the handle is switched on when replaced in the charger, it automatically switches off. When removed, it switches on again at the previously-selected brightness.</p> <p>3.5 V Li-Ion Rechargeable battery handle</p> <ul style="list-style-type: none"> • 2 hours to charge handle with BETA NT 300 charging unit • Bottom insert displays charge status
301146	<p>WELCH ALLYN® PanOptic Ophthalmoscope iExaminer Adaptor</p> <ul style="list-style-type: none"> • iPhone 4/4s compatible • iPhone not included
301147	<p>WELCH ALLYN® PanOptic Ophthalmoscope iExaminer Adaptor</p> <ul style="list-style-type: none"> • iPhone 6/6s compatible • iPhone not included

WELCH ALLYN® /HEINE® Ophthalmoscope Adaptor	
Article	
173549	Adaptor HEINE® to WELCH ALLYN® Battery Handle
302046	Adaptor WELCH ALLYN® to HEINE® Battery Handle

HEINE® Rechargeable Handles	
Article	
302535	<p>HEINE® BETA NT Rechargeable Handle</p> <ul style="list-style-type: none"> • 3.5 V NiMH Rechargeable battery • Compatible with NT 300 table charger • 4 Hours maximum charging
302635	HEINE® BETA R Rechargeable Handle, 3.5 V
302555	<p>HEINE® BETA L Rechargeable Handle</p> <p>If the handle is switched on when replaced in the charger, it automatically switches off. When removed, it switches on again at the previously-selected brightness.</p> <ul style="list-style-type: none"> • 3.5 V Li-Ion Rechargeable battery handle • 2 hours to charge handle with BETA NT 300 charging unit • Bottom insert displays charge status

Otoscope and Ophthalmoscope HEINE® NT 300 Charger

The HEINE® NT 300 table charger automatically charges HEINE® rechargeable batteries irrespective of their state of charge or their output voltage. The rechargeable battery cannot be overcharged with the appropriate adaptor set it is possible to recharge all BETA L, BETA NT, BETA SLIM rechargeable handles and laryngoscope rechargeable handles in the same NT 300.

- Two independent charging compartments. Complete functionality for one or two handles at a time.
- Fast charge feature: 2 hours to recharge a BETA L rechargeable handle with Li-Ion L rechargeable battery or 4 hours for other rechargeable handles.
- Automatic charging process, regardless of the state of the battery charge, ensuring a long service life for rechargeable batteries
- Overcharge protection; Charger switches off automatically when the battery is fully charged
- Charge Indicator: Steady light indicates the charging is complete, pulsating light indicates the handset is charging
- Dimensions: 61 x 142 mm (H x W)
- Weight: 830 g

Article

302550 HEINE® NT 300 Charger



HEINE® Rechargeable Handle & Bottom Inserts

The foundation of the system is the grip sleeve, which forms the handpiece for each BETA handle. With corresponding module parts, any handle can be put together as shown here. A BETA battery handle can be converted to a rechargeable handle. All BETA handles feature short-circuit protection and a high-quality ceramic resistor for brightness control.

Article

302400	HEINE® BETA Handle
302425	HEINE® BETA Handle Bottom Insert for C Size Batteries
302637	HEINE® BETA R Bottom Insert, 3.5V <ul style="list-style-type: none"> • Allows direct mains charging • Suitable for 3.5V NiMH or 3.5V Li-Ion
302435	HEINE® BETA NT Handle Bottom Insert
302405	HEINE® BETA Handle Sleeve Extension <ul style="list-style-type: none"> • Accommodates three C Size Batteries/3.5V
302437	HEINE® BETA NT Li-Ion Battery, 3.5V <ul style="list-style-type: none"> • Double the capacity (up to 120 min) • No "memory effect": Full power at any time
302436	HEINE® BETA NT Rechargeable Battery, 3.5V
302438	HEINE® BETA L Bottom Insert
302431	HEINE® BETA L Rechargeable Li-Ion Battery, 3.5V



HEINE® BETA 4 USB Bottom Insert and accessories

Article

302440	HEINE® BETA 4 USB Bottom Insert
302441	HEINE® BETA 4 USB Li-ion Rechargeable Handle <ul style="list-style-type: none"> • Including Li-ion L Rechargeable Battery 3.5 V and BETA 4 USB Bottom Insert • Charging time: 4h
302442	HEINE® BETA 4 plug-in Power Supply <ul style="list-style-type: none"> • For USB Cable
302443	HEINE® BETA 4 USB Rechargeable Handle SET <ul style="list-style-type: none"> • Rechargeable Handle including Li-ion L Battery 3.5 V, BETA 4 USB Bottom Insert, plug-in Power Supply and USB Cable





302553



302431

302432



302551



30255101

HEINE® BETA® 4 Rechargeable Handles and Accessories

- High quality metal construction for high stability and long life
- Unique locking system. No friction from metal to metal, preventing wear and guarantees a secure fit of the instruments
- Deep discharge protection: Protects the battery from total discharge and ensures maximum operating life
- Li-Ion Technology: No ‚memory effect‘ resulting in longer battery life. Fast charging time.
- Durable: Up to 6 weeks of normal operation without recharging when using LED instruments
- High capacity: More than twice the capacity compared to NiMH batteries
- Charge level indicator in the Bottom Insert (302552)

Article

302553	HEINE® BETA® 4 NT Handle Includes: <ul style="list-style-type: none"> • Li-ion Rechargeable Battery (302432) • BETA® 4 NT Bottom Insert (302552)
302552	HEINE® BETA® 4 NT Bottom Insert
302431	HEINE® BETA L Rechargeable Li-Ion Battery, 3.5V <ul style="list-style-type: none"> • Charging time: 2 hours
302536	HEINE® BETA® 4 SLIM NT Handle <ul style="list-style-type: none"> • Incl. Li-ion Rechargeable Battery and BETA® 4 SLIM Base Unit • Slim Handle with automatic closure • Dimensions (in cm): H 13,5 x Ø 1,9 • Weight: 180 g
302432	Li-ion Rechargeable Battery <ul style="list-style-type: none"> • Spare part for HEINE® BETA® 4 SLIM NT Loading Handle (302536)
302551	HEINE® NT 4 Table Charger <ul style="list-style-type: none"> • For NT 4 load handles • Space-saving design • Simultaneous loading of 2 handles possible • With overcharge protection and charge indicator • All BETA® 4 NT Load Handles (adapters included) and BETA® SLIM NT Load Handles (optional Reducer kit: 30255101) can be charged in the NT4 desktop charger with corresponding adapters or reducer sets. • Dimensions (in cm): B 14.2 x H 6.1 x T 6.6 • Weight: 235 g
30255101	Reduction Kit <ul style="list-style-type: none"> • Suitable for BETA® 4 SLIM NT Loading Handles and F.O.® 4 Slim NT Laryngoscope Loading Handle • 2 Pieces

A partner for your long-term success

Eickemeyer®



HEINE® OMEGA 500 Indirect Ophthalmoscopes

These head mounted indirect ophthalmoscopes can be used in the consulting room, operating theatre or anywhere else in the clinic. They are comfortable to wear and can easily be adjusted to an individual's head size. In addition, key adjustment controls feature soft touch surfaces for precise and positive adjustment control. The LED system provides a longer operating time, longer working life, improved thermal management and excellent colour rendering compared to XHL-Technology.

Features:

- Multi-coated illumination system
- Stereo views regardless of the pupil size
- Rheostat adjustable positioning
- Locking flip up system

Article

173480	HEINE® OMEGA 500 XHL Indirect Ophthalmoscope <ul style="list-style-type: none"> • Lighting system with XHL Xenon Halogen Lamp Technology • Please order battery box or mPack battery separately
173488	HEINE® OMEGA 500 LED Indirect Ophthalmoscope <ul style="list-style-type: none"> • LED technology: Homogeneous illumination with no heat development and extended working life.
173476	HEINE® mPack Battery <ul style="list-style-type: none"> • Rechargeable Li-Ion Battery with Plug-in Transformer • Compatible with: HEINE® Omega 500 (173480, 173485, 173487)
31112903	HEINE® mPack/mPack LL Plug-in Transformer



173480



173476

HEINE® OMEGA 500 UNPLUGGED Indirect Ophthalmoscopes

The OMEGA 500 LED has set a new standard for reliability and performance. The „unplugged“ battery on the back of the headband allows one-of-a-kind mobility and up to 20 hours „ON“ time.

- Exact vertical alignment of the illumination with the observation path further minimising the reflections.
- Unique “Synchronized Adjustment of Convergence and Parallax” for high quality, stereoscopic fundus images through any pupil size.
- Precise selection of the observation and illumination optics for small pupils down to 1.0 mm.
- Excellent optical performance due to the multi-coated illumination system.
- Due to the mounting of the optics on an aluminum chassis, the OMEGA 500 is solid, long lasting, and is guaranteed to be dustproof.
- The HC50 L Headband Rheostat controls the LED illumination as well as the XHL Xenon-Halogen illumination.

Article

173485	HEINE® OMEGA 500 XHL UNPLUGGED Indirect Ophthalmoscope <ul style="list-style-type: none"> • XHL - Xenon Halogen Lamp Technology • Includes: Li-Ion mPack battery in the headband, complete with charger
173487	HEINE® OMEGA 500 LED UNPLUGGED Indirect Ophthalmoscope <ul style="list-style-type: none"> • LED Lighting technology • Homogeneous illumination • No heat development • Longer operating life



173485



173492

HEINE® OMEGA 500 UNPLUGGED with DV 1 Digital Video Camera

The head-mounted indirect ophthalmoscope OMEGA 500 is now available from HEINE® with DV1 digital video camera.

- The integrated camera and optical system of the indirect ophthalmoscope are precisely calibrated for each other.
- No further adjustment of the mirror is necessary for digital image capture.
- 1280 x 960 display - High resolution video recording or images for investigations.
- Ease of use - Digital image processing without additional adjustments.
- Recording is immediately displayed onscreen.
- The headband of the OMEGA 500 distributes the weight of the compact camera ensuring a comfortable fit
- Due to the mounting of the optics on an aluminum chassis, the OMEGA500 is robust, long lasting, and is guaranteed to be dustproof
- The high depth of field in combination with the easy to reach focus lever, ensures a sharp and focused image.
- Can be connected via USB 2.0 to any laptop or computer. A software program, enabling both video and image recording, is included.
- Wireless power supply system with mPack UNPLUGGED headband battery for wireless operator convenience.

Article

- | | |
|--------|---|
| 173492 | <p>HEINE® OMEGA 500 UNPLUGGED with DV 1 Digital Video Camera</p> <ul style="list-style-type: none"> • Includes Foot switch for easy recording of images (this is not provided by HEINE® and so it is not covered by HEINE® warranty) |
|--------|---|



173476



173465



173490



173495

HEINE® Indirect Ophthalmoscope Accessories

Article

- | | |
|----------|---|
| 173465 | <p>HEINE® Indirect Ophthalmoscope Teaching Mirror</p> <ul style="list-style-type: none"> • Suitable for Suitable for HEINE® Omega® 500/2C/100 |
| 31112901 | <p>HEINE® Indirect Ophthalmoscope Battery</p> <ul style="list-style-type: none"> • Suitable for HEINE® Omega® 500 UNPLUGGED • Wireless mobility • Brightness control directly on the device • Built-in Li-Ion battery mPack in the head band, complete with charger |
| 173476 | <p>HEINE® mPack</p> <ul style="list-style-type: none"> • Rechargeable Li-Ion Battery and plug-in transformer included |
| 173495 | <p>Combibag for HEINE® OMEGA 500</p> |
| 173490 | <p>HEINE® Indirect Ophthalmoscope Case</p> <ul style="list-style-type: none"> • Suitable for Suitable for HEINE® Omega® 500 |

Eickemeyer®

*Tailored advice and
a comprehensive service*

EICKEMEYER® Aspheric Ophthalmoscopy

The large diopter gives a small image for a good overview. Small Diopter gives you a bigger image with less overview. The bigger the eye, the „smaller“ the diopter of the lens needed:

- Dog: 20 D or 30 D
- Cat: 20 D or 30 D

Article

173474	EICKEMEYER® Aspheric Ophthalmoscopy Lens 20 D
173475	EICKEMEYER® Aspheric Ophthalmoscopy Lens 30 D



173474

VOLK Aspheric Lenses

Aspheric surfaces correct aberrations present in more common spherical lenses, which help improve the field of view for diagnosis. VOLK double aspheric glass optics provide enhanced imaging for indirect ophthalmoscopy, which further helps the veterinary ophthalmologist reach a definitive diagnosis

The bigger the eye, the "smaller" the diopter of the lens:

- Horse: 15 D
- Dog: 20 D or 30 D
- Cat: 20 D or 30 D
- Bird: 78 D

Article

17353815	VOLK 15 D
173538	VOLK 20 D
17353801	VOLK 28 D
17353860	VOLK 60 D
17353878	VOLK 78 D
173536	VOLK Pan Retinal 2.2 D
173537	VOLK Macula Plus 5.5D



173538



173536



173537

HEINE® Aspheric Lenses

- Advanced anti-reflex A.R. multicoating – reduced reflection, excellent light transmission
- Lens curvature matches that of the retina – perfect, distortion-free retinal image
- Large diameter – significant increase in field of view without magnification loss
- Aspheric surfaces – reduced distortion of the periphery

Article

Article		Ø mm
173472	HEINE® Aspheric Lens 20 D	50
173473	HEINE® Aspheric Lens 30 D	46



173472



173574



173580



301180



301170



173585

Gonioscopy Lenses

- The Barkan and Koeppel lenses enable examination of the iridocorneal angle and diagnosis of primary glaucoma by creating a corneal vault by leaving the anterior chamber undisturbed
- The small diameter contact surface allows static or dynamic gonioscopy
- A light source, head loupe or microscope is required to achieve desirable resolution and illumination

Article

173573	KOEPPE Diagnostic Gonio Lens <ul style="list-style-type: none"> • Ø 14 mm • Magnification: 1.7x • Viewing Angle: 160°
173574	KOEPPE Diagnostic Gonio Lens <ul style="list-style-type: none"> • Small, Ø 17 mm • Particularly suitable for smaller animals
173575	KOEPPE Diagnostic Gonio Lens <ul style="list-style-type: none"> • Medium, Ø 18 mm • Particularly suitable for medium sized animals
173576	KOEPPE Diagnostic Gonio Lens <ul style="list-style-type: none"> • Magnification: 1.5x • Viewing Angle: 160°, Ø 19 mm
173580	BARKAN Gonio Lens <ul style="list-style-type: none"> • Hydrostatic pressure attaches lens to cornea

HEINE® Ophthalmic Examination Lamp

Article

301180	HEINE® Ophthalmic Examination Lamp, 3.5 V <ul style="list-style-type: none"> • For examination of the anterior segment and cornea in focal light • 5 different apertures that help detect erosion, oedema and foreign bodies on the cornea • Compatible with HEINE® handles • Apertures focused at 100 mm working distance *Spare Bulbs (Art. 301181)
301170	HEINE® Finoff Transilluminator, 3.5 V <ul style="list-style-type: none"> *Spare Bulbs 3.5 V (Art. 300038) Spare Bulbs LED 3.5 V (Art. 300039)

EICKEMEYER® ERG System

- Ideal for pre-operative screening of retinal function in cataract patients
- Handy device for checking the operation of the retina in acquired and hereditary disorders
- Complete ERG/VEP screening
- Connection to a PC or laptop (Windows) via USB interface
- With white stimulus
- Clear, easy-to-use software
- Includes: six contact lens electrodes and two needle electrodes

Article

173585	EICKEMEYER® ERG System
173586	Needle Electrode <ul style="list-style-type: none"> • 0.28 GA • Length 12 mm
173587	Disposable Contact Lens Electrode <ul style="list-style-type: none"> • 3 per pack

EICKEMEYER® Diascleral Transilluminator

A standard diagnostic tool for any practice.

The Diascleral Transilluminator provides a focused light source and is therefore suitable for examining the fundus in all animals. It is a standard diagnostic tool for any veterinarian and is used to get a first impression of the ophthalmological status of the patient, even when the pupil is closed. The great advantage is its ability to bend the upper portion and appropriately focus the light. This allows the investigator to view the fundus with a closed pupil (direct ophthalmoscopy). It can also be used, with the aid of an ophthalmic lens as a light source, to perform an indirect ophthalmoscopy.

The Diascleral Transilluminator is suitable for the diagnosis of the following changes in the fundus:
Retinal hemorrhage and/or retinal detachment, e. g. in Hypertensive Retinopathy of a cat (frequent occurrence, particularly in older cats)
Other changes in the retina, e. g. PRA (Progressive Retinal Atrophy), chorioretinitis (inflammation in the retina) or congenital abnormalities (Collie Eye Anomaly, retinal dysplasia).

- Cone of Light: Ø 3 mm
- Aperture: 16 lumens (if new batteries)
- Weight (excl. battery): 30 g
- Includes: 2 AAA batteries (1.5 V), Allen key

Article

301195 EICKEMEYER® Diascleral Transilluminator



Ophthalmic Examination Lamp

The ophthalmic examination lamp is equipped with 2 main LEDs (white and red) and 3 secondary-LEDs (red, green, blue).

The lamp has 3 switches: limit switch, on and off switch and 2 side switches. One side switch has 5 brightness levels for the main white light. It has 3 brightness levels of the four main colored light and the three colors of the secondary LEDs. Thus, a simple and fast switching between the color light is possible.

The lamp has a life expectancy of up to 400 hours. A battery level indicator is integrated.

Technical specifications

- Length: 143 mm
- Head diameter: 40 mm
- Case diameter: 25.4 mm
- Weight without batteries: 138 g
- Lamp white main-LED: CREE XP-G2 (R6)
- Lamp Red Head LED: CREE XP-E (R2)
- Lamp power: white main LED max 440 lumens, Red Head LED max. 120 lumens
- Reverse polarity protection
- Titanium coated steel clip
- Lens made of mineral glass with AR coating
- Housing made of aerospace aluminum
- Splash-proof to IPX-8

Article

173598 Ophthalmic Examination Lamp





217210



217309



173589

EICKEMEYER® Doppler

Article

- 217210 EICKEMEYER® Doppler
Reliable and accurate non-invasive blood pressure monitor for small animals.
- Compact, hand-held design
 - High sensibility for a clear signal
 - Adjustable sound volume and headphone connection
 - Focused 8 MHz Probe with wide beam for better flow detection in the artery
 - Probe adapted for positioning on the carpal joint or the underside of the tail
 - Rechargeable battery powered, operating time: ±6 hours
 - Dimensions: 175 x 80 x 25 mm (L x W x H)
 - Lightweight (300 g)
 - Incl. battery charger
 - Incl. 250 g gel/bottle
- 217309 Sphygmomanometer for Dogs and Cats
• Includes two cuffs: 5.0 and 7.5 cm
- 217307 Doppler Blood Pressure Cuff, 1.9 cm
• Ideal for small cats
- 217308 Doppler Blood Pressure Cuff, 3.3 cm
• Ideal for cats and small dogs
- 217311 Doppler Blood Pressure Cuff, 10 cm
• Ideal for large dogs

SCHIRMER Tear Test

SCHIRMER's Tear Test is indicated to quantitatively measure the rate of tear production

- Useful in the evaluation of conjunctivitis to help diagnose tear deficiency as a contributing factor to ocular surface diseases
- Physiological range: 10–20 mm
- Individually packaged – sterile
- 100 per pack

Article

- 173589 SCHIRMER Tear Test – Ophthalmic Strips

Fundus Camera Optibrand ClearView

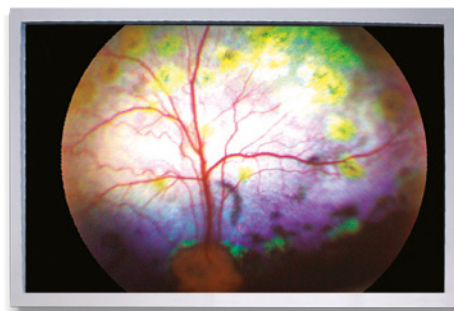
The Optibrand ClearView Optical Imaging System automatically captures retinal images in a digital format and projects them onto your computer screen for closer examination, discussion with your client and saving as a permanent record. If necessary, you can easily transmit images to a veterinary ophthalmologist for further evaluation through ClearView's easy-to-use, online telemedicine portal. With ClearView, you have a more powerful diagnostic tool in hand with a fast, convenient connection to a specialist when you need it. The lightweight camera is comfortable to hold and easy to use with only one button.

PC requirements:

- Windows XP or Vista
- 1.5 GHz processor
- 32 MB disk space
- USB 2.0
- Minimum monitor resolution: 1,680 x 1,050

Article

173550	Fundus Camera Optibrand ClearView
17355001	Fundus Camera Optibrand Frontview <ul style="list-style-type: none"> • Works in tandem with ClearView to create an all-in-one optical imaging tool capable of examining all areas of the eye • Simple attachment clips to the front of the ClearView camera, allowing for examination of areas of the outer eye not visible with ClearView alone



173550

D-EYE Fundus Camera for Smartphones

The Fundus Camera for Smartphones
The innovative portable retinal imaging system D-EYE can easily be connected to an iOS or Android smartphone (Apple or Samsung) and thus becomes a fundus camera for investigation and diagnosis. Use on your device anywhere to perform early or routine eye examinations and retinal screenings to the most common diseases like Progressive Retinal Atrophy (PRA) and Hypertensive retinopathy in cats. It is simple, effective and affordable.

Features include

- Non-invasive, comfortable and ergonomic
- Field of view of up to 20 degrees
- Portable – requires no external power source or lighting
- Reflections are eliminated
- App with integrated patient information file
- On the spot local storage of patient data history checks
- Data can be accessed anywhere

Article

173555	D-EYE for Apple iPhone 5/5s
173556	D-EYE for Apple iPhone 6
173557	D-EYE for Samsung Galaxy S4
173558	D-EYE for Samsung Galaxy S5



173556



173560

Tono-Pen VET™

The Tono-Pen VET™ tonometer is the leading device for measuring and monitoring intra-ocular pressure. It functions in any orientation, making it ideal to use on all of your patients. The device activates with the push of a button and results are displayed clearly on the easy-to-read LCD screen.

Sterile OCU-FILM tip covers are used to minimise the risk of cross-contamination between uses.

Features:

- Easiest way to detect glaucoma
- Patient can be positioned in any way
- Easy to use with minimal training
- Simple, fast and reliable
- Light weight (only 64 g)
- Incl. disposable tip covers
- 150/box

Article

173560	Tono-Pen VET™
173565	OCU-FILM Tip Covers • 150 per pack
173563	Tono-Pen XL/Vet Battery • 4 per pack



173600

Tono-Pen AVIA® VET™ Tonometer

With over 40 breeds of dogs and cats possessing a predisposition to glaucoma, the Reichert Tono-Pen Tonometer provides simplicity for monitoring this condition. The Tono-Pen AVIA® VET™ does not require calibration and is ready for use. The battery lasts four times longer, and boasts a larger LCD screen.

- Patient can be positioned in any way
- Fast and accurate IOP measurement with minimal training
- Less corneal irritation due to smaller sensor
- Disposable covers to eliminate cross contamination
- Easy to read, digital display
- Measuring range: 5 – 55 mm/Hg
- Long Battery Life
- Small size, weight 71 grams
- Maintenance-free
- Includes 150 protective tip covers (OCU-FILM® +)

Article

173600	Tono-Pen AVIA® VET™ Tonometer
173565	Ocu-Film® Tono-Pen Tip Cover • Minimises the risk of cross-contamination • 150 per pack
173605	Tono-Pen AVIA® VET™ Battery



SCHIOTZ Tonometer

- Indentation tonometer for measurement of intraocular pressure
- Placed directly on the eye
- Requires topical ocular anaesthetic

Article

173551	SCHIOTZ Tonometer
--------	-------------------

Surgical Loupes

Features:

- 4-fold magnification
- Large field of view: 35 mm
- Working distance 250 mm

Article

310704 Surgical Loupes



Loupes MaxDetail

The inexpensive magnifying glasses for demanding detailed work providing 2-fold magnification

Features:

- Large diopter adjustment (± 3 diopters)
- Working distance: 40 cm
- Excellent image quality through large focal area
- Suitable for spectacle wearers
- Weight: 40 g

Article

310600 Loupes MaxDetail



310600

LED Head Lamp for Loupes MaxDetail

The small, lightweight LED head lamp combines two high-power LEDs with a light condensing lens that produces a strong, brilliant and uniform light field.

- Allows a shadow-free and almost constant illumination for up to 8 hours in normal mode and up to 14 hours in Eco mode
- Vertically adjustable light
- Battery case can be comfortably worn on the belt or in a shirt pocket
- Low power consumption, because the lamp is optimized for battery use

Includes:

- Small, lightweight and compact LED spotlight
- Powered handy, compact battery housing and cable management
- Illumination: 3200 lx (250 mm), 1200 lx (400 mm)
- Hard foam case

Specifications

Lamp housing:

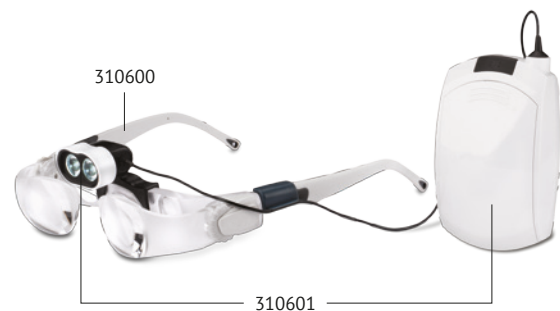
- Swivel range: vertical
- Dimensions (mm): L 32 x W 20 x D 34
- Weight: 11 g

Battery case:

- Cable length: 1 m
- 3x AA batteries/case
- Dimensions (mm): L 90 x W 55 x D 29 (without clip), D 40 (with clip)
- Weight: 60 g (without batteries)

Article

310601 LED Head Lamp for Loupes MaxDetail



310601



310601



310700



310701



310702

HEINE® Loupes HR 2.5x

HEINE® binocular loupes set a benchmark for design, hightech materials and precise manufacturing methods. HEINE® HR 2.5x loupes offer an excellent balance between high magnification, field of view, depth of field, and ease of use.

They are ideal for a wide range of applications such as dental, ophthalmic, cosmetic and reconstructive surgery.

Features

- Achromatic optics for crisp, bright images with colour-correction
- Lightweight (51 g)
- Water-resistant
- Independent adjustment of left and right optics for perfect PD adjustment
- High magnification with a large field of view and excellent depth of field
- i-View loupe mount provides any angle of view and flips up the optics independently of the optional LED Loupe Light
- Field of View: 90 mm
- Depth: 110 mm

Features S-FRAME spectacle frame

- Maximum comfort with a modern and ergonomic design
- Innovative, light materials - weighs only 24 g
- 2 Sterilisable swivel levers
- Optional Correction Frame for prescription lenses available (310512)

Article

310700	HEINE® HR 2.5x Binocular Loupes <ul style="list-style-type: none"> • High Resolution 2.5x magnification with i-View on S-FRAME spectacle frame • Working distance: 34 cm
310707	HEINE® HR 2.5x w/HEINE® S-FRAME (42 cm) <ul style="list-style-type: none"> • High Resolution 2.5x magnification with i-View on S-FRAME spectacle frame • Working Distance: 42 cm
310716	HEINE® HR 2.5x w/HEINE® S-FRAME (34 cm) <ul style="list-style-type: none"> • High Resolution 2.5x magnification with i-View on S-FRAME spectacle frame • Working Distance: 34 cm
310701	HEINE® HR 2.5x Binocular Loupes + LED Loupe Light <ul style="list-style-type: none"> • High Resolution 2.5x magnification with i-View on S-FRAME spectacle frame • Working distance: 42 cm • With LED LoupeLight • Attachable yellow filter • mPack LL battery charger EN 50
310703	HEINE® HR 2.5x Binocular Loupes <ul style="list-style-type: none"> • High Resolution 2.5x magnification with i-View Loupe Mount on Professional L Headband • Working distance: 34 cm • Protective glasses • 2 Sterilisable swivel levers
310713	HEINE® HR 2.5x w/Professional Headband <ul style="list-style-type: none"> • High Resolution 2.5x magnification with i-View Loupe Mount on Professional L Headband • Working Distance: 43 cm • Comfortable head cushions • Adjustable height and width • 2 Sterilisable swivel levers • Optics can be combined with glasses
310702	HEINE® HR 2.5x Binocular Loupes <ul style="list-style-type: none"> • High Resolution 2.5x magnification with i-View Loupe Mount on Professional L Headband • Working distance: 34 cm • S-GUARD splash protection • Protective glasses • 2 Sterilisable swivel levers

HEINE® Loupes HRP 3.5x

HRP Binocular Loupes of 3.5x magnification or higher are recommended for fine surgical procedures where high magnification is necessary. For example in endodontal, vascular, neuro, and intricate orthopaedic surgery and for experienced users.

HRP loupes have been designed to provide the largest field of view and best depth of field possible for each magnification.

Features

- Achromatic optics for crisp, bright images from edge to edge
- Lightweight (85 g)
- Water-resistant
- Independent adjustment of left and right optics for perfect PD adjustment
- i-View loupe mount provides any angle of view and flips up the optics independently of the optional LED Loupe Light
- Working distance in: HRP 3.5x/420 mm
- Field of view in: 65 mm
- Focus in: 60 mm

Article

310698	HEINE® Loupes HRP 3.5x <ul style="list-style-type: none"> • Professional L Headset with S-GUARD
310699	HEINE® Loupes HRP 3.5x <ul style="list-style-type: none"> • Professional L Headset without S-GUARD



310698



310699

HEINE® LED MicroLight – Lightweight Head Set

- Advanced LED technology
- White, homogenous light, ideal for all surgical and dental applications
- Compact and lightweight, ensures perfect comfort
- Waterproof design, easy to clean
- Individual adjustment of height and angle of view
- 100 % coaxially for shadow-free light
- Homogenous illumination of the whole field of view
- Approximately 81 mm illumination field at 420 mm, approx. 95 mm at 520 mm working distance
- Precision multiple lens optical system consisting of four high-quality lenses
- Complete homogenous illumination of the whole field of view, and a clearly defined light spot
- Includes m-pack LL battery and plug-in charger

Technical Data

- Illumination: 40,000 lux at a working distance of 250 mm
- Colour temperature: 6,250 kelvin
- LED operating life: 1 W super-high output LED rated at 50,000 hours operating life
- Angle of declination: stepless and individually adjustable for every examination
- Operating time: 17 hours (with mPack LL)
- Lightweight (165 g together with LED MicroLight)
- Ideal for spectacle wearers
- Fully-adjustable for width to fit any head
- Hygienic and comfortable leather cushions

Article

311136	HEINE® LED MicroLight – Lightweight Head Set
--------	--





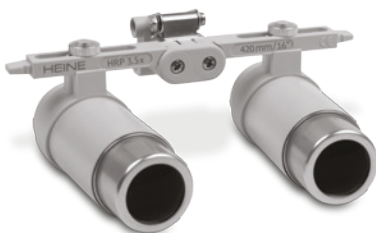
311137



311138



311121



311121

HEINE® ML4 LED HeadLight

The new standard in LED illumination defining optimal light intensity, homogeneity and colour rendering for each individual examination situation.

The adjustable illumination spot size fits any examination situation. Coaxial and homogeneous illumination with an absolutely bright light spot that is uniform from edge-to-edge for the perfect illumination of difficult to see areas.

100 % freedom with a choice of cable-free mPack UNPLUGGED head-worn battery or mPack belt-worn battery pack.

The HEINE® ML4 LED HeadLight Professional headband has multiple adjustment points for comfort and stability – ideal for long procedures.

Features

- 50,000 Lux of bright, white light
- Colour temperature: 4,500 Kelvin
- Stepless light intensity control
- Adjustable light spot size: 30–80 mm at 42 cm working distance
- Wide viewing angle
- Multi-coated glass optics for maximum brightness
- Operating time: 8.5 hours with mPack battery and 3.5 hours with mPack UNPLUGGED
- Can be combined with HEINE® HR and HRP loupes
- Warranty: 5 Years

Features Loupes (HR 2.5x, HR 3.5x, HRP, HR 6x)

- Working distance: 420 mm
- Crisp, High-Resolution Image
- Unique i-View Loupe Mount
- Exceptional Focal Range
- Multi-coated Achromatic Optics

Article

311137	HEINE® ML4 LED HeadLight with mPack <ul style="list-style-type: none"> • Includes: mPack Battery (convenient to wear on the belt)
311138	HEINE® ML4 LED HeadLight with mPack UNPLUGGED <ul style="list-style-type: none"> • Integrated headband Professional, light-weight high-performance mPack battery UNPLUGGED • The cordless battery mPack UNPLUGGED offers 100% freedom of movement • Wireless, with rechargeable battery integrated on the headband
311121	HEINE® HR 2.5x Loupe <ul style="list-style-type: none"> • Magnification: 2.5x
311123	HEINE® HR 3.5x Loupe <ul style="list-style-type: none"> • Magnification: 3.5x
311122	HEINE® HRP Loupe <ul style="list-style-type: none"> • Magnification: 4.5x
311124	HEINE® HR 6x Loupe <ul style="list-style-type: none"> • Magnification: 6x • For HEINE® 3S LED/HEINE® ML4 LED
311126	Mounting kit for Loupe <ul style="list-style-type: none"> • Compatible with: HEINE® 3S LED/ML4 LED
311131	Safety Glasses <ul style="list-style-type: none"> • Compatible with: HEINE® 3S LED/ML4
173477	HEINE® mPack <ul style="list-style-type: none"> • Rechargeable Li-Ion Battery • Plug-in transformer not included • Compatible with: HEINE® Omega 500 (173480, 173485, 173487)
173478	HEINE® mPack Connection Cable <ul style="list-style-type: none"> • Cable between mPack battery and 3S LED head lamp
31112903	HEINE® mPack/mPack LL Plug-in Transformer

HEINE® LED LoupeLight Professional

Precision multiple lens optical system consisting of four high-quality lenses. Complete homogenous illumination of the whole field of view, and a clearly defined light spot

Features

- Advanced LED technology
- Coaxial illumination
- Compact, lightweight (24 g)
- Waterproof design, easy to clean
- Individual adjustment of the angle of view, provides the right angle for every situation
- Optional yellow filter reduces blue light, avoiding premature hardening of composites
- Illumination: 40,000 lux at a working distance of 250 mm
- Colour temperature: 6,250 kelvin
- LED operating life: 1W super-high output LED rated at 50,000 hours operating life
- Spot size: the illuminated field is designed to complement the HR/HRP loupes. 81 mm dia. at 420 mm, 95 mm dia. at 520 mm
- Angle of declination: stepless and individually adjustable for every examination

Article

310718	HEINE® LED LoupeLight Professional for HR/HRP Loupes <ul style="list-style-type: none"> • Includes mPack LL battery and plug-in transformer • Operating time: 17 hours (with mPack LL)
31112904	HEINE® mPack LL <ul style="list-style-type: none"> • Rechargeable Li-Ion Battery • Plug-in transformer included <p>Compatible with:</p> <ul style="list-style-type: none"> • HEINE® LED LoupeLight (310701, 310718) • HEINE® LED MicroLight (311135, 311136)
31112903	HEINE® mPack/mPack LL Plug-in Transformer



310718

HEINE® LED-LoupeLight 2

Compact LED Headlight – now even brighter

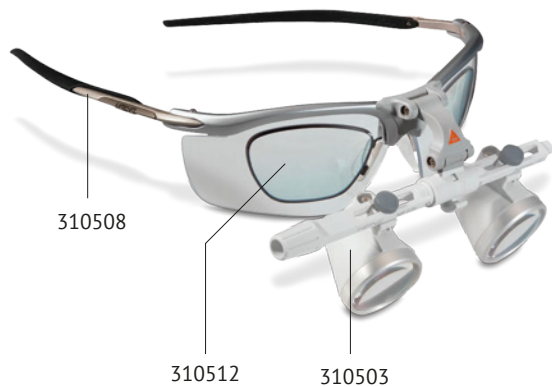
The combination of light and Loupe delivers the ultimate in performance as high quality illumination along with LED HQ-maximises the image quality of the Loupe. For a perfect view and precise diagnosis, the LoupeLight 2 is now 25 % brighter than its predecessor model, with a homogeneous edge-to-edge illumination of 55,000 lux. The LoupeLight 2 now features a replaceable connecting cord which connects the device to the mPack mini – the new and compact power source. With a weight of only 95 g, the mPack mini is now approximately 70 % smaller and lighter than its predecessor.

Features

- Compact and Lightweight
- Bright, homogeneous and coaxial illumination (55,000 lux)
- With mPack mini and E4-USB plug-in transformer
- For i-View loupe mount (HR/HRP)
- 5 year guarantee

Article

310717	HEINE® LED LoupeLight 2
--------	-------------------------



HEINE® HR Loupes 2.5x

HEINE® HR High Resolution Binocular Loupes provide chromatic optics for crisp, bright images with colour-correction. The i-View loupe mount provides any angle of view and flips up the optics independently of the optional LED LoupeLight. HEINE® HR Loupes are lightweight, water-resistant and offer high magnification with a large field of view and excellent depth of field.

- Magnification: 2.5x

Article

310503	HEINE® HR Loupes 2.5x <ul style="list-style-type: none"> • Working distance: 34 cm
310504	HEINE® HR Loupes 2.5x <ul style="list-style-type: none"> • Working distance: 42 cm
310508	HEINE® S-FRAME Loupe Mount <ul style="list-style-type: none"> • Suitable for HR and HRP Loupes • Maximum comfort with a modern, ergonomic design • Innovative, light materials – weighs only 24 g
310510	HEINE® Professional Headband Loupe Mount <ul style="list-style-type: none"> • Suitable for HR and HRP Loupes Adjustable for height and width with comfortable head cushions Optics can be combined with glasses
310718	HEINE® LED LoupeLight Professional for HR/HRP Loupes on S-FRAME <ul style="list-style-type: none"> • Includes mPack LL battery and plug-in transformer • Operating time: 17 hours (with mPack LL) • Precision multiple lens optical system consisting of four high-quality lenses Complete homogenous illumination of the whole field of view, and a clearly defined light spot

Features

- Advanced LED technology
- Coaxial illumination
- Compact, lightweight (24 g)
- Waterproof design, easy to clean
- Individual adjustment of the angle of view, provides the right angle for every situation
- Optional yellow filter reduces blue light, avoiding premature hardening of composites
- Illumination: 40,000 lux at a working distance of 250 mm
- Colour temperature: 6,250 kelvin
- LED operating life: 1 W super-high output
- LED rated at 50,000 hours operating life
- Spot size: the illuminated field is designed to complement the HR/HRP loupes. 81 mm dia. at 420 mm, 95 mm dia. at 520 mm
- Angle of declination: stepless and individually adjustable for every examination

310511	HEINE® S-GUARD Loupe Accessory <ul style="list-style-type: none"> • Provides splash protection as well as rapid and simple adjustment of binocular loupes on the headband
310512	HEINE® Correction Frame Loupe Accessory for S-FRAME <ul style="list-style-type: none"> • Clip-in correction frame for prescription lenses for S-FRAME and S-GUARD

HEINE® HRP Loupes

HRP High Resolution Binocular Loupes of 3.5x magnification or higher offer all the features of the HEINE® HR loupes and are recommended for fine surgical procedures where high magnification is necessary. HRP loupes have been designed to provide the largest field of view and best depth of field possible for each magnification.

Artikel-Nr.

310505	HEINE® HRP Loupes 3.5x <ul style="list-style-type: none"> • Working distance: 42 cm
310506	HEINE® HRP Loupes 4.0x <ul style="list-style-type: none"> • Working distance: 34 cm
310507	HEINE® HRP Loupes 6.0x <ul style="list-style-type: none"> • Working distance: 34 cm
310508	HEINE® S-FRAME Loupe Mount <ul style="list-style-type: none"> • Suitable for HR and HRP Loupes • Maximum comfort with a modern, ergonomic design • Innovative, light materials – weighs only 24 g
310510	HEINE® Professional Headband Loupe Mount <ul style="list-style-type: none"> • Suitable for HR and HRP Loupes • Adjustable for height and width with comfortable head cushions • Optics can be combined with glasses
310718	HEINE® LED LoupeLight Professional for HR/HRP Loupes on S-FRAME <ul style="list-style-type: none"> • Includes mPack LL battery and plug-in transformer • Operating time: 17 hours (with mPack LL) • Precision multiple lens optical system consisting of four high-quality lenses • Complete homogenous illumination of the whole field of view, and a clearly defined light spot

Features

- Advanced LED technology
- Coaxial illumination
- Compact, lightweight (24 g)
- Waterproof design, easy to clean
- Individual adjustment of the angle of view, provides the right angle for every situation
- Optional yellow filter reduces blue light, avoiding premature hardening of composites
- Illumination: 40,000 lux at a working distance of 250 mm
- Colour temperature: 6,250 kelvin
- LED operating life: 1 W super-high output
- LED rated at 50,000 hours operating life
- Spot size: the illuminated field is designed to complement the HR/HRP loupes. 81 mm dia. at 420 mm, 95 mm dia. at 520 mm
- Angle of declination: stepless and individually adjustable for every examination

310511	HEINE® S-GUARD Loupe Accessory <ul style="list-style-type: none"> • Provides splash protection as well as rapid and simple adjustment of binocular loupes on the headband
310512	HEINE® Correction Frame Loupe Accessory for S-FRAME <ul style="list-style-type: none"> • Clip-in correction frame for prescription lenses for S-FRAME and S-GUARD



310505



310508



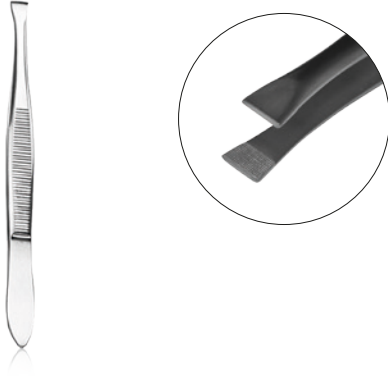
310510



310718



310512



DOUGLAS Cilia Forceps

Designed with fine horizontal serrations which can help correct abnormal growth of lashes from the posterior lamella (e.g. distichiasis).

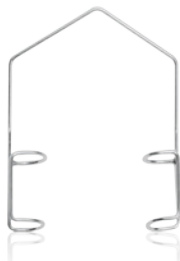
Article		Length mm
170309	DOUGLAS Cilia Forceps	90



GRADLE Cilia Forceps

- Suitable for correcting abnormal growth of lashes from the posterior lamella (e.g. distichiasis)
- Designed with a smooth, squared off positive gripping jaws and a double leaf spring mechanism for self-opening action

Article		Length mm
170310	GRADLE Cilia Forceps	95



BARRAQUER Speculum

Wire speculum designed with fenestrated blades to help keep the eyelids retracted.

Article		Length mm
170004	BARRAQUER Speculum	40



CASTROVIEJO Speculum

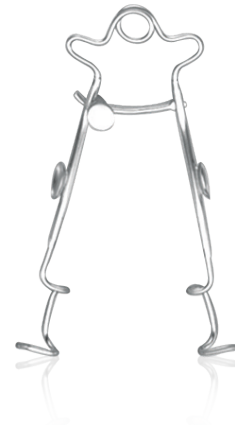
- Designed with straight adjustable arms and open blades
- Locking mechanism allows for fine control

Article		Length mm
170008	CASTROVIEJO Speculum	80

GRAEFE Eyelid Retractor

Wire retractor with a fine control mechanism to minimise friction.

Article		Length mm
170009	GRAEFE Eyelid Retractor	90



DESMARRES Retractors

Designed with a smooth curved blunt blade to help manually retract the eyelid.

Article		Length mm
170114	DESMARRES Retractor – Size 2	140
170116	DESMARRES Retractor – Size 3	160



170114

Strabismus Scissors

Designed with a long shank to blade ratio, which helps provide a steady grip while maintaining greater precision cutting. Very useful for dissecting tissue in and around the orbit.

Article		Length mm	Form
118011	Strabismus Scissor	115	straight
118111	Strabismus Scissor	115	curved
116011	Strabismus Scissor (TC)	115	straight
116111	Strabismus Scissor (TC)	115	curved



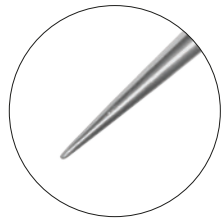
118111



BOWMAN Lacrimal Probe

Helps to determine the functional status of the lacrimal drainage system. Can also be used to help perform a dacryocystorhinostomy.

Article		Length mm
170470	BOWMAN; Lacrimal Probe – Size 0/00	130



WILDER Lacrimal Dilators

Designed with a tapered blunt tip and a round knurled handle.

Article		Length mm
170481	WILDER Lacrimal Dilator – Size 1	110
170482	WILDER Lacrimal Dilator – Size 2	110
170483	WILDER Lacrimal Dilator – Size 3	110

170481



KELLNAR Lacrimal Dilators and Tubes

- Helps to determine the functional status of the lacrimal drainage system
- Silicone tubing can be used to irrigate and aspirate with the dilator

Article		Length mm
170486	KELLNAR Lacrimal Dilator – Left	85
170487	KELLNAR Lacrimal Dilator – Right	85
170490	KELLNAR Lacrimal Dilator – Dual-ended	140
170503	KELLNAR Probe Silicone Tube • Outer Ø 0.6 mm	1000
170505	KELLNAR Probe Silicone Tube • Outer Ø 0.9 mm	1000
170507	KELLNAR Probe Silicone Tube • Outer Ø 1.6 mm	1000

170486

ANEL Lacrimal Cannulae

Designed to irrigate and aspirate purulent debris from the nasolacrimal duct.

Article		Length mm	Form
440605	ANEL Lacrimal Cannula	15	straight
440705	ANEL Lacrimal Cannula – 90°	15	curved



440605



440705

Lacrimal Duct Cannulae

- Suitable for flushing purulent debris through the nasolacrimal duct
- Luer hub connection

Article		Length mm	Form
441007	Lacrimal Duct Cannula	25	curved
440805	Lacrimal Duct Cannula – Olive Tip	30	straight
440905	Lacrimal Duct Cannula – Olive Tip	33	curved



441007



440805



440905

BONN Irrigating Cannulae

Designed with a blunt angled tip which is suitable for flushing or aspirating the nasolacrimal duct.

Article	
441100	BONN Irrigating Cannula
441101	BONN Irrigating Cannula – Slim



441100



KNOLLE-PEARCE Irrigating Vectis

Designed to gently remove the nucleus by using mechanical and hydrostatic forces.

Article

441120 KNOLLE-PEARCE Irrigating Vectis



KUHNT Corneal Scraper

Designed with a delicate sharp tip at a 45° angle on a flat handle.

Article

170331 KUHNT Corneal Scraper



MEYHOEFER Chalazion Curettes

Article

170420 MEYHOEFER Chalazion Curette, 2.0 mm

170425 MEYHOEFER Chalazion Curette, 2.5 mm

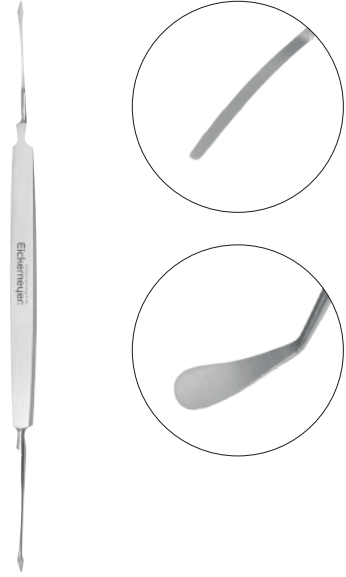
170420

CASTROVIEJO Cyclodialysis Spatula

Designed with a smooth, straight, flat, delicate handle and dual-ended delicate sharp tips.

Article

170512 CASTROVIEJO Cyclodialysis Spatula – Dual-Ended

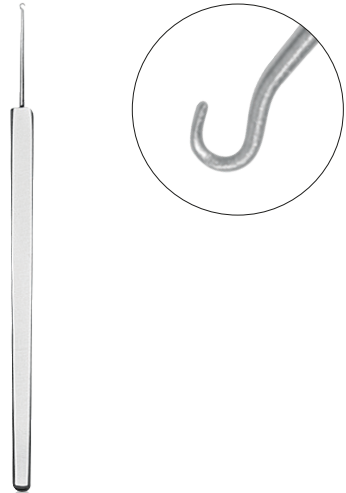


GRAEFE Iris Hook

Designed with a sharp hook and a polished flat handle.

Article

170440 GRAEFE Iris Hook



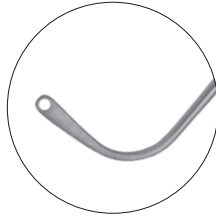
WEBER Wire Loop

Designed with a delicate, long loop on a straight, flat handle.

Article

170464 WEBER Wire Loop





GASS Retinal Detachment Hook

- Designed with an oval hole that helps securely place a retaining suture on ocular muscles
- Oval aperture: 1.5 mm diameter
- Hook length: 13 mm

Article

170441 GASS Retinal Detachment Hook



DESMARRES Chalazion Forceps

- Designed with a solid lower plate and an open upper plate
- Handle is ridged with a locking thumb screw

Article

Length mm

171522 DESMARRES Chalazion Forceps – Size 2

90



STADES Nictating Forceps

Thumb forceps with two locking mechanisms designed specifically for third eyelid surgery. The lower plate is solid and the upper plate is semi-curved.

Article

Length mm

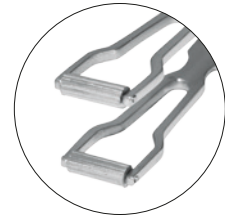
171609 STADES Nictating Forceps

95

KNAPP Conjunctiva Forceps

Thumb forceps with a grooved handle and large apertures to help grasp the conjunctiva.

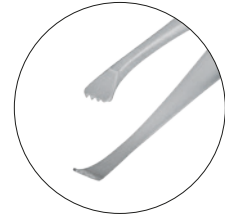
Article		Length mm
171611	KNAPP Conjunctiva Forceps	110



GRAEFE Fixation Forceps

Jaws are designed with straight serrated teeth to provide a firm grip on eyelashes.

Article		Length mm
171411	GRAEFE Fixation Forceps with Pin	110
171412	GRAEFE Fixation Forceps with Lock	110



171411

Eickemeyer®

*Innovations for
your everyday
success*





173500



173500

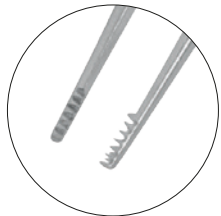


173518

Intraocular Silicone Prosthesis

- Constructed from black silicone with low immunoreactive characteristics
- Helps improve cosmetic results post enucleation
- Range of sizes available

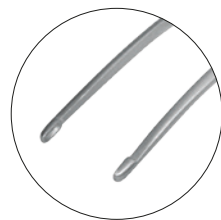
Article		Ø mm
173500	Eye Implant Introducer	
173514	Silicone Prosthesis	14
173515	Silicone Prosthesis	15
173516	Silicone Prosthesis	16
173517	Silicone Prosthesis	17
173518	Silicone Prosthesis	18
173519	Silicone Prosthesis	19
173520	Silicone Prosthesis	20
173522	Silicone Prosthesis	22
173523	Silicone Prosthesis	23
173524	Silicone Prosthesis	24
173526	Silicone Prosthesis	26
173528	Silicone Prosthesis	28
1735290030	Silicone Prosthesis	30
1735290033	Silicone Prosthesis	33
1735290036	Silicone Prosthesis	36
1735290038	Silicone Prosthesis	38
1735290040	Silicone Prosthesis	40
1735290043	Silicone Prosthesis	43
1735290045	Silicone Prosthesis	45
1735290047	Silicone Prosthesis	47
1735290050	Silicone Prosthesis	50
1735290052	Silicone Prosthesis	52
1735290055	Silicone Prosthesis	55
1735290060	Silicone Prosthesis	60



HESS Capsule Forceps

Opposing surfaces have a row of fine teeth with fine double curving pointed tips and ridged handles to enhance grip.

Article		Length mm
171306	HESS Capsule Forceps	65



GILL-ARRUGA Capsule Forceps

Designed with a fine down curving pointed tip and ridged linear grip. This instrument is suitable for the handling of delicate ocular tissues.

Article		Length mm
171307	GILL-ARRUGA Capsule Forceps	75

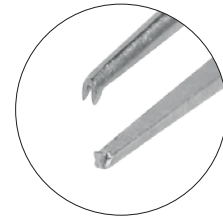
CASTROVIEJO Suture Forceps

Designed with straight shaft tips with extremely delicate teeth and a 5.5 mm tying platform.

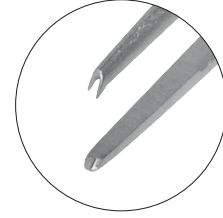
Article		Length mm
171503	CASTROVIEJO Suture Forceps, 0.3 mm	100
171505	CASTROVIEJO Suture Forceps, 0.5 mm	100



171503



171503

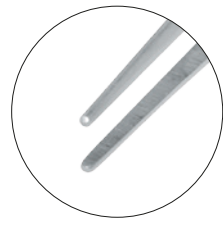


171505

TUEBINGEN Suture Forceps

Designed with straight shaft tips with extremely delicate teeth and a 6.5 mm tying platform.

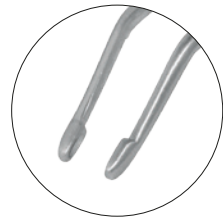
Article		Length mm
171510	TUEBINGEN Suture Forceps	100



ARRUGA Capsule Forceps

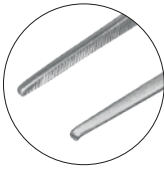
Designed with down curving tips at a 45° angle and ridged linear grip to enhance instrument handling.

Article		Length mm
171309	ARRUGA Capsule Forceps	100





170610



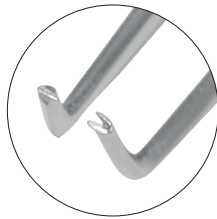
170710



GRAEFE Iris Forceps

Designed with a ridged handle and guide pins for excellent instrument grip/control.

Article		Length mm	Form
170610	GRAEFE Iris Forceps	100	straight
170710	GRAEFE Iris Forceps	100	curved
170810	GRAEFE Iris Forceps – 1 x 2 Teeth	100	straight
170910	GRAEFE Iris Forceps – 1 x 2 Teeth	100	curved



HESS (Colibri) Iris Forceps

Designed with 1 x 2 fine teeth for holding flaps of cornea or sclera and a ridged handle for improved instrument handling.

Article		Length mm
171007	HESS (Colibri) Iris Forceps	70



BARRAQUER (Colibri) Forceps

Designed with ridged, long, straight and flat handles that contain a long single hole.

- Tip width: 0.5 mm
- Tip curve: 45°
- Teeth

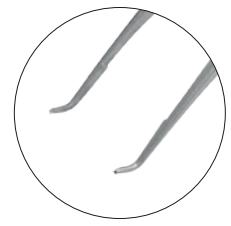
Article		Length mm
171105	BARRAQUER (Colibri) Forceps	70

BARRAQUER-KATZIN (Colibri) Forceps

Designed with ridged, straight and flat handles to enhance instrument grip.

- Tip width: 0.12 mm
- Tip angle: 90°
- Teeth

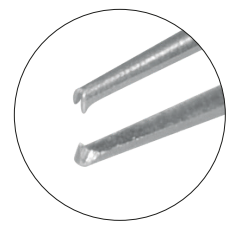
Article		Length mm
171107	BARRAQUER-KATZIN (Colibri) Forceps	70



BISHOP-HARMON Iris Forceps

Designed with 1 x 2 sharp and delicate teeth to handle eye tissues. The flat, straight, smooth, handles with 3 holes provide extra grip.

Article		Length mm
171108	BISHOP-HARMON Iris Forceps	85



FUCHS Capsule Forceps

Opposing surfaces are designed with fine longitudinal teeth and down curving tips.

Article		Length mm
171207	FUCHS Capsule Forceps	70





171710



170221

170222

170223

170224

CASTROVIEJO Scissors

Designed with fine tips and a double leaf spring mechanism for self-opening action. The ridged handle and guide pin enhances instrument control.

Article		Length mm	Form
171710	CASTROVIEJO Iridectomy Scissors – Sharp Tips	100	curved
172111	CASTROVIEJO Corneal Scissors	100	curved – right
172110	CASTROVIEJO Corneal Scissors	100	curved – left

VANNAS Cataract Scissors

Designed with extra thin angled blades and a double leaf spring mechanism for self-opening action. The ridged handle enhances instrument control.

Article		Length mm	Form
172208	VANNAS Cataract Scissors	85	curved

GRAENITZ Eyelid Spatula

Designed to help protect the delicate structures of the eyelid during incision.

Article		Length mm
170221	10 mm GRAENITZ Eyelid Spatula – Size 1	77
170222	16 mm GRAENITZ Eyelid Spatula – Size 2	77
170223	22 mm GRAENITZ Eyelid Spatula – Size 3	77
170224	25 mm GRAENITZ Eyelid Spatula – Size 4	77

BARRAQUER Needle Holders

Designed with round knurled ridged handles without a locking mechanism. Ideal for fine suturing in the anterior chamber.

Article		Length mm	Form
173011	BARRAQUER Needle Holder	110	curved
173012	BARRAQUER Needle Holder	130	curved

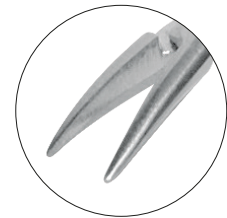


173011

BARRAQUER-TROUTMAN Needle Holder

Designed with round knurled ridged handles with an automatic locking mechanism. Ideal for fine suturing in the anterior chamber.

Article		Length mm	Form
173010	BARRAQUER-TROUTMAN Needle Holder	100	curved



BOYNTON Needle Holders (TC)

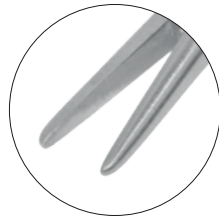
Designed with serrated jaws to firmly hold needles and a single spring mechanism for self-opening action.

Article		Length mm
173112	BOYNTON Needle Holder (TC)	120

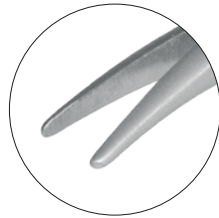




172414



172514



CASTROVIEJO Needle Holders

Designed with a double leaf spring mechanism for self-opening action and a locking mechanism to maintain a secure grip on suture needles. The ridged handles help enhance instrument grip and control.

Article		Length mm	Form
172414	CASTROVIEJO Needle Holder	140	straight
172514	CASTROVIEJO Needle Holder	140	curved

Eickemeyer®

*Quality equipment
for your practice*



166520



166530

Sugi Swabs

- Sugi absorbent materials are especially suitable for dabbing those areas where special care must be taken (e.g. neural structures and ocular tissue)
- Sugi absorbent materials are manufactured from cellulose material
- The material undergoes soft/elastic expansion immediately upon contacting moisture
- The absorptive capacity is approximately 17 times its own weight

Article		Length mm
166520	7 mm Sugi Swab – Wedge Tip • 200 per pack	70
166530	4 mm Sugi Swab – Cylindrical • 500 per pack	70

Ophthalmic Surgery Instrument Set – Basic

This instrument set provides a good foundation of equipment for veterinary ophthalmic diagnostics, therapeutics and procedures.

Article		Form	Length mm
981704	Ophthalmic Surgery Instrument Set – Basic		
101780	Size 15 Guarded Scalpels		
170009	GRAEFE Eyelid Retractor		90
171411	GRAEFE Fixation Forceps with Pin		110
171522	DESMARRES Chalazion Forceps – Size 2		90
110811	STEVENS Tenotomy Scissors – Fine	straight	110
170810	GRAEFE Iris Forceps – 1 x 2 Teeth	straight	100
170610	GRAEFE Iris Forceps	straight	100
173011	BARRAQUER Needle Holder	curved	110



101780 170009 171411 171522



110811 170810 170610 173011

Eickemeyer®



A partner for your long-term success



170512 170331 170464 101710 132812 171108



171505 171207 171411 171007 171522 171510



170004 172111 172110 171710 110911 173011



981703

981702

Ophthalmic Surgery Instrument Set – Advanced

The ocular region is one of the most important and delicate areas of anatomy. This region's fragile nature requires distinctive instruments to help surgically manage encountered abnormalities. This surgical instrument set provides all the necessary equipment for the veterinary surgeon to tackle entropion, eyelid reconstruction, corneal pedicle graft, etc.

Article	Form	Length mm
173020	Ophthalmic Surgery Instrument Set – Advanced	
170512	CASTROVIEJO Cyclodialysis Spatula – Dual-Ended	
170331	KUNHT Corneal Scraper	
170464	WEBER Wire Loop	
101710	BEAVER Scalpel Handle	100
132812	ADSON Tissue Forceps – Delicate – 1 x 2 Teeth	120
171108	BISHOP-HARMON Iris Forceps	85
171505	0.5 mm CASTROVIEJO Suture Forceps	100
171207	FUCHS Capsule Forceps	70
171411	GRAEFE Fixation Forceps with Pin	110
171007	HESS (Colibri) Iris Forceps	70
171522	DESMARRES Chalazion Forceps – Size 2	90
171510	TUEBINGEN Suture Forceps	100
170004	BARRAQUER Speculum	40
172111	CASTROVIEJO Corneal Scissors	curved – right 100
172110	CASTROVIEJO Corneal Scissors	curved – left 100
171710	CASTROVIEJO Iridectomy Scissors – Sharp Tips	curved 100
110911	STEVENS Tenotomy Scissors – Fine	curved 110
173011	BARRAQUER Needle Holder	curved 110
981702	Autoclavable Storage Case – Silver	
	• Dimensions (in mm): L 290 x W 135 x H 40 mm	
981703	Fingered Silicone Insert –	275 x 125 mm (L x W)

Eickemeyer®

*Veterinary
technologie
for life*

AlgerBrush II

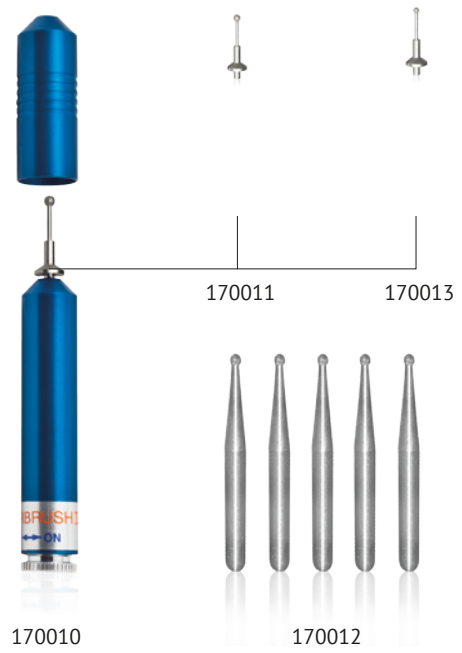
The AlgerBrush II is a battery powered, handheld, low torque motorised burr. It has been designed to remove foreign bodies from the cornea or sclera of patients. The burr in this rotary instrument is used as a "brush" rather than a drill and the foreign bodies are thus "brushed" from the eye leaving a smooth surface, which in turn heals much faster than with other instruments that could be used for this purpose.

AlgerBrush II Unit includes 3.5 mm Round Medium Grit Diamond Burr.

*According to a recent paper (Veterinary Ophthalmology (2013) 16, 2, 83–88), it has been successfully used to treat spontaneous corneal epithelial defects (SCCEDs) in dogs in combination with a bandage contact lens.

Article

170010	AlgerBrush II Unit
170011	AlgerBrush II Corneal Burr – 3.5 mm • Chuck attachment included
170012	AlgerBrush II Corneal Burrs – 1 mm • 5 per pack
170013	AlgerBrush II Corneal Burr – 2.5 mm
170014	AlgerBrush II Diamond Grinding Wheel – 4 mm • Fine • With chuck



Cryosurgical „Cryo-Stick“

Pen-like device works with nitric oxide (N₂O) on the basis of expansion refrigeration and reaches a temperature of -89 °C

- Bloodless treatment
- Almost painless
- Minimal scarring
- Ideal for ophthalmic or dermatological treatments
- Special cartridge valve prevents gas leakage
- Tip covers an area of 1 – 6mm
- Multiple use of the cartridge is possible
- Includes: One N₂O Cartridge

Article

173442	Cryosurgical „Cryo-Stick“ • Lowest temperature: -89 °C • Includes N ₂ O Cartridge
173444	N ₂ O Cartridge • N ₂ O cartridge for Cryo-Stick (173442) • Special cartridge valve prevents gas loss



Cautery Pen

- Precise cauterisation thanks to the very fine tip (28 mm)
- Easy to use
- Operating temperature: 600 °C
- Individual sterile packaging
- For single use only

Article

173430	Disposable Cautery Pen
--------	------------------------





Operating Microscope

The ergonomic position of the controls allows a comfortable posture when operating for long periods

Features:

- 5 magnification steps: 3.6x/5.4x/8.9x/14.2x/22.3x
- Visual field 56–9 mm
- Micro-focusing 40 mm, motorised pedal controlled
- Light source delivers bright light, 150 W
- Mobile floor stand with 4 lockable castors, providing excellent mobility
- Tilt-resistant, heavy floor stand with locking castors
- Optional: tube for connection of CCD cameras
-

Article

328140 Operating Microscope



Examination Light VarioLED flex

- Flexible gooseneck arm and ergonomic magnifier handle to help examine oral or ocular structures
- Large field of view with 76 mm lens Ø
- Distortion-free aspheric lens with 2.5x magnification
- Shadow free ring illumination or precise segment illumination
- High level of illumination provided by 63 long-life LEDs
- Low energy consumption (5 W) and long service life (~ 50,000 hours)
- Securable to table tops ≤ 60 mm

Article

614500 Examination Light VarioLED flex



605990

Vacuum Pillow – V Shape

V-shaped vacuum pillow designed to help position and support an animal's head during surgery (e.g. conjunctival pedicle graft). Adjusting the cushion inflation pressure allows the pillow to adapt to a wide range of head sizes.

- V shape
- PVC construction
- Extra soft edges

Article

605911 Vacuum Pillow – V Shape

605990 Vacuum Pillow Hand Pump
 • Suitable for inflating all EICKEMEYER® vacuum cushions

Ocular Linscan 12 MHz Transducer

- Scan/Freeze/Save button on probe
- Comfortable design
- Near/Mid/Far gain controls
- Plug and Play with USB 2.0
- Foot switch included
- Cine Loop with up to 1 minute recording
- High resolution and great image quality
- 12 MHz enhanced up to 15 MHz

Article

173300	Ocular Linscan 12 MHz Transducer
173301	Ocular Linscan 12 MHz Transducer Footswitch – spare part



173300

AESCLAP Clipper Isis/Exacta

Reduced noise and vibration, whilst delivering superior cordless clipping. Ideal for cat forelimb, head, and neck regions.

- Blade cutting width: 24 mm
- Blade cutting length: 0.5 mm
- Battery life up to 40 min./4 hours to recharge
- Weight: 120 g
- Includes one clipper blade

Article

902600	AESCLAP Clipper Isis/Exacta
902601	AESCLAP Isis/Exacta Clipper Blade <ul style="list-style-type: none"> • Carbon blades (can not be re-sharpened)



902600

Saddle Chair Barrage

- Easy to wash synthetic leather cover
- Colour: Black
- Smooth double castors
- Adjustable height: 52 to 72 cm

Article

610160	Saddle Chair Barrage
610161	Saddle Chair Barrage Armrest <ul style="list-style-type: none"> • Pair



610160

EICKEMEYER KG
Eltastraße 8
78532 Tuttlingen
Germany
T +49 7461 96 580 0
F +49 7461 96 580 90
E export@eickemeyer.com
www.eickemeyer.com