



 **CAROMED**[®]
recover beautifully

body aesthetics by  **MENTOR**[®]



Pink Passion.

Compassion. Commitment. A Cure.

Mentor offers elegantly designed compression garments manufactured exclusively by Caromed® to help women feel beautiful as they recover from cosmetic and reconstructive procedures. When you choose our Pink Passion™ garments, Mentor donates a percentage of your purchase directly to breast cancer research and awareness programs. Although we are the first company to make such a commitment through the sale of post-surgical garments, our dedication to breast cancer research and education is long standing. Through research, science and innovation, we continue to develop breast implant products and garments that play a rejuvenating role in a woman's recovery from cancer.

Through dear friends or loved ones, we have all been impacted by cancer. With your purchase of a Pink Passion™ garment, you bring hope to a very important cause and help us take another step forward in the battle to eradicate breast cancer.

body aesthetics
by  MENTOR

Catalogue Contents

BREAST AND CHEST COLLECTION

2-8124	Post-Augmentation Bra	1
2-8126EL	Reconstruction Sports Bra	2
2-8008S	Bra Vest with Cups, Short Style	3
2-8008L	Bra Vest with Cups, Long Style	4
2-8002	Shaped Compression Vest	5
2-8014	Compression Vest	6
5-8030	Vest Style Arm Bandage	7
5-8035	Bolero Style Arm Bandage	8
2-8015	The Bandeau – Standard Design (Double Bandeau)	9
2-8016	The Bandeau – Single Strap Design	9
2-8020	The Bandeau – One Size Fits All (3" Wide)	9
2-8125	Semi-Shaped White Cotton Bra	10
2-8126	Semi-Shaped Champagne Satin Bra with Velcro® Straps	11
2-8127	Semi-Shaped White Cotton Bra with Velcro® Straps	11

ABDOMINOPLASTY COLLECTION

3-8005	Female Abdominoplasty Garment	13
3-8025	Adjustable Abdominoplasty Garment	14
4-8200	Capri Abdomino/Lipoplasty Combination Girdle	15
4-8212	Above-the-Knee Abdomino/Lipoplasty Combination Girdle	15
4-8213	Ankle Length Abdomino/Lipoplasty Combination Girdle	15

LIPOPLASTY COLLECTION

4-8011	Powernet Mid-Thigh Girdle	17
4-8511	Satin Mid-Thigh Girdle	17
4-8012	Powernet Above-the-Knee Girdle	18
4-8512	Satin Above-the-Knee Girdle	18
4-8000	Powernet Capri Length Girdle	19
4-8500	Satin Capri Length Girdle	19
4-8013	Powernet Ankle Length Girdle	19
4-8513	Satin Ankle Length Girdle	19
4-4011	Powernet Mid-Thigh Suspended Girdle	20
4-4511	Satin Mid-Thigh Suspended Girdle	20
4-4012	Powernet Above-the-Knee Suspended Girdle	21
4-4512	Satin Above-the-Knee Suspended Girdle	21
4-4000	Powernet Capri Suspended Girdle	22
4-4500	Satin Capri Suspended Girdle	22
4-4013	Powernet Ankle Length Suspended Girdle	22

LIPOPLASTY COLLECTION *(continued)*

4-4513	Satin Ankle Length Suspendered Girdle	22
4-8552	Above-the-Knee Breast/Lipo Bodysuit	23
4-8550	Capri Breast/Lipo Bodysuit	23

UNISEX WAISTBINDER COLLECTION

3-8004-9	9" Width White Unisex One-Piece Waistbinder	25
3-8004-12	12" Width White Unisex One-Piece Waistbinder	25
3-8004-15	15" Width White Unisex One-Piece Waistbinder	25
3-8504-9	9" Width Black Unisex One-Piece Waistbinder	26
3-8504-12	12" Width Black Unisex One-Piece Waistbinder	26
3-8504-15	15" Width Black Unisex One-Piece Waistbinder	26
3-8027-9	9" Width White Unisex Multi-Flap Waistbinder	27
3-8037-12	12" Width White Unisex Multi-Flap Waistbinder	27
3-8047-15	15" Width White Unisex Multi-Flap Waistbinder	27
3-8527-9	9" Width Black Unisex Multi-Flap Waistbinder	28
3-8537-12	12" Width Black Unisex Multi-Flap Waistbinder	28
3-8547-15	15" Width Black Unisex Multi-Flap Waistbinder	28

MALE GARMENT COLLECTION

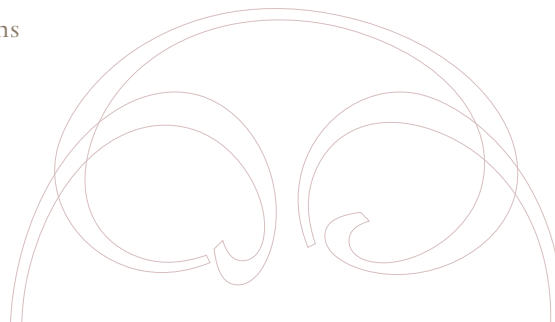
2-8003	Male Compression Vest	29
3-9000	Male Abdominoplasty Garment, without Zippers	30
3-9005	Male Abdominoplasty Garment	30
4-8100	Male Below-the-Knee Girdle	31
4-8112	Male Above-the-Knee Girdle	32
4-8113	Male Ankle-Length Girdle	32

HEAD AND NECK COLLECTION

1-8006	Chin-Neck Bandage	33
1-8011	Ear Bandage	34
1-8018	Therma-Jaw Bandage with Gel Packs	35
1-8019	Therma-Jaw Bandage without Gel Packs	35
1-8017	Two Gel Packs (Bandage not included)	35
1-8026	Face Lift Bandage	36
1-8007	Full Face Bandage	37

INFORMATION

Custom Garment Measuring Instructions	39
Custom Garment Order Form	43
Patient Care Instructions	45
Terms and Conditions	46





Quality

As the first post-surgical garment manufacturer, Caromed has defined industry standards for excellence and integrity. Today, our garments are available in new, elegantly designed styles that allow you to recover in comfort—and recover beautifully.

Throughout our history, we've earned a proven reputation for producing superior medical-grade compression garments with unmatched dedication and exacting attention to detail. We have evolved from offering a few select garments, to being a market leader with an extensive array of elite products for cosmetic and reconstructive patients around the world.

All Caromed garments are produced in North Carolina exclusively for Mentor using world-class fabrics from the finest mills throughout the U.S. Each is selected only if it meets our stringent guidelines for medical-grade compressive properties that satisfy scrupulous physician and patient needs. We use only the best available zippers, hook & eye closures and elastics which is why we meticulously cut, sew and produce each garment with accuracy and care.

Caromed's dedication comes from putting our hearts into making sure every garment measures up to a level of excellence medical professionals and patients have come to expect. More than anything, every Caromed garment is designed to assure you can recover in style, so you can feel beautiful about the new you.



Caromed post augmentation bras feature medical grade compression fabrics that help minimize swelling and bruising, while providing a slightly contoured design for support and comfort.



2-8124 Post Augmentation Bra

FEATURES

- Break-away adjustable straps
- Front zipper closure for easy application
- Hook & eye closures behind zipper
- Formed cups
- Heavier straps are available on sizes 38 and above
- Simulated underwire

COLORS

-  Black
-  Champagne
-  Pink

IDEAL FOR

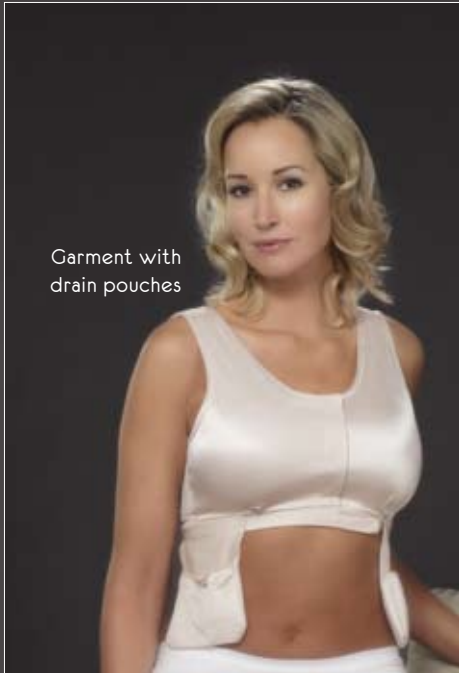
- Breast augmentation
- Breast reduction
- Breast reconstruction

SIZING CHART

Chest	
Inches	Centimeters
32	81.3
34	86.4
36	91.4
38	96.5
40	101.6
42	106.7
44	111.8

custom sizing available

Refer to price list for complete catalogue number.



Garment with drain pouches

2-8126EL Reconstruction Sports Bra

FEATURES

- Satin fabric that is internally lined with soft, breathable cotton
- Adjustable Velcro® front closure
- Adjustable Velcro® straps
- Two drain pouches with Velcro® attachments on both sides
- Additional drain pouches can also be ordered

COLORS

- Champagne
- Pink

IDEAL FOR

- Breast reduction
- Breast reconstruction

CUP SIZES B, C & D

Chest	
Inches	Centimeters
32	81.3
34	86.4
36	91.4
38	96.5
40	101.6
42	106.7
44	111.8
46	116.9
48	121.9
50	127.0
52	132.1

custom sizing available

Refer to price list for complete catalogue number.

Please note: Underwear shown in photos not available.



Made from a soft satin fabric, Caromed bra vests with cups allow you to recover in comfort and recover in style.

2-80085 Bra Vest with Cups, Short Style

FEATURES

- Front detachable straps
- Front zipper closure for easy application
- Hook & eye closures behind zipper
- Heavier straps are available on sizes 38 and above
- Unilateral cup design is available for post-operative mastectomy patients

COLOR

 Champagne

IDEAL FOR

- Breast reduction
- Breast reconstruction
- Lipoplasty of the back, midriff and flanks
- Mastectomy

CUP SIZES A-DD

Chest	
Inches	Centimeters
32	81.3
34	86.4
36	91.4
38	96.5
40	101.6
42	106.7
44	111.8

custom sizing available

Please specify cup size when ordering. For reduction surgery, downsizing cup by one size is recommended.

Refer to price list for complete catalogue number.



Made from a soft satin fabric, Caromed bra vests with cups allow you to recover in comfort and recover in style.



2-8008L Bra Vest with Cups, Long Style

FEATURES

- Front detachable straps
- Front zipper closure for easy application
- Hook & eye closures behind zipper
- Heavier straps are available on sizes 38 and above
- Unilateral cup design is available for post-operative mastectomy patients
- Can be special ordered with sleeves

COLOR

 Champagne

IDEAL FOR

- Breast reduction
- Breast reconstruction
- Lipoplasty of the back, midriff and flanks
- Mastectomy

CUP SIZES A-DD

Chest	
Inches	Centimeters
32	81.3
34	86.4
36	91.4
38	96.5
40	101.6
42	106.7
44	111.8

custom sizing available

Please specify cup size when ordering. For reduction surgery, downsizing cup by one size is recommended.

Refer to price list for complete catalogue number.

Please note: Underwear shown in photos not available.

Caromed's shaped compression vests are made from a soft, satin fabric that closely resembles the look and style you enjoy with your everyday undergarments.



2-8002 Shaped Compression Vest

FEATURES

- Slightly contoured cup area
- Front detachable straps
- Front zipper closure for easy application
- Hook & eye closures behind zipper
- Heavier straps are available on sizes 38 and above
- Can be custom ordered with sleeves

COLORS

-  Black
-  Champagne
-  Pink

IDEAL FOR

- Breast reduction
- Breast reconstruction

SIZING CHART

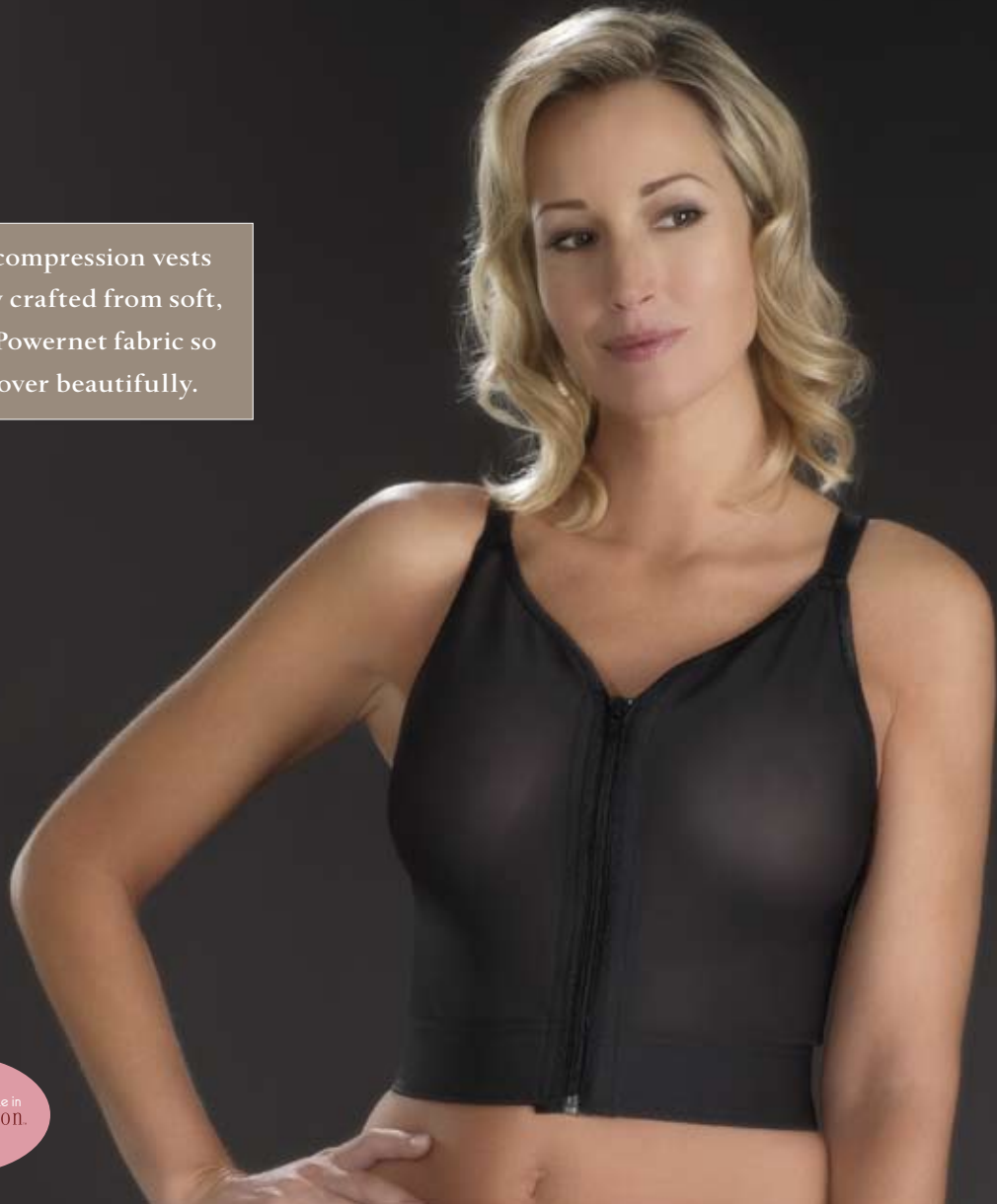
Chest	
Inches	Centimeters
30	76.0
32	81.3
34	86.4
36	91.4
38	96.5
40	101.6
42	106.7
44	111.8

custom sizing available

Refer to price list for complete catalogue number.

Please note: Underwear shown in photos not available.

Caromed's compression vests are expertly crafted from soft, breathable Powernet fabric so you can recover beautifully.






2-8014 Compression Vest

FEATURES

- Soft, breathable Powernet fabric
- Front detachable straps
- Front zipper closure for easy application
- Hook & eye closures behind zipper
- Heavier straps are available on sizes 38 and above
- Can be special ordered with sleeves

COLORS

-  Black
-  Champagne
-  Pink

IDEAL FOR

- Submuscular or subglandular breast augmentation
- Mastectomy

SIZING CHART

Chest	
Inches	Centimeters
30	76.0
32	81.3
34	86.4
36	91.4
38	96.5
40	101.6
42	106.7
44	111.8
46	116.9

custom sizing available
Refer to price list for complete catalogue number.



5-8030 Vest Style Arm Bandage*

FEATURES

- Includes graded compression from shoulder to wrist
- Front zipper closure for easy application
- Hook & eye closures behind zipper
- Can be ordered with thumb loops

COLORS

-  Black
-  Champagne

IDEAL FOR

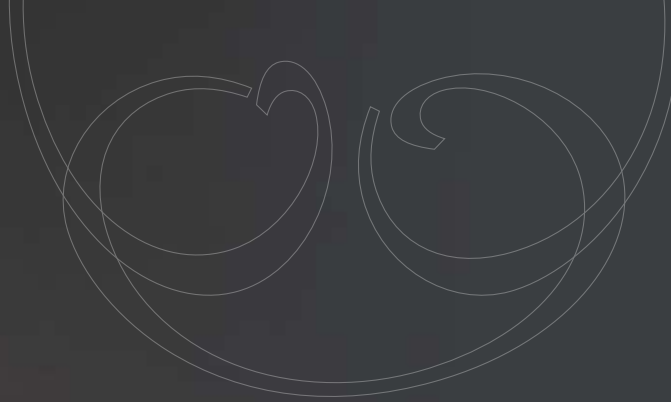
- Dermolipectomy
- Lipoplasty of the upper arms
- Lipoplasty of the anterior or lateral auxiliary folds or rolls

* Vest style arm bandages are CUSTOM ORDER ONLY. See measurement instructions on pages 39-41. When ordering, please specify which vest you would like sleeves added to:

- 2-8008L Bra Vest w/Cups, Long
- 2-8014 Compression Vest
- 2-8002 Shaped Compression Vest

Refer to price list for complete catalogue number.

Please note: Underwear shown in photos not available.



5-8035 Bolero Style Arm Bandage

FEATURES

- Attach with Velcro® straps across the chest
- Graded compression from shoulders to wrists
- Can be ordered with axillae openings or thumb loops

COLORS

-  Black
-  Champagne

IDEAL FOR

- Dermolipectomy
- Lipoplasty of the upper arms
- Lipoplasty of anterior and lateral axillary folds/rolls

SIZING CHART

Size (inches)	Shoulder to Wrist	Mid-Upper Arm	Wrist
S	19 - 20	9 - 10	5
M	21 - 22	10 - 11	5.5
L	22 - 23	11 - 12	6
XL	23 - 24	12 - 13	6.5
XXL	24 - 25	13 - 14	7

see arm measurement diagram, page 41

Refer to price list for complete catalogue number.



Standard Design
(Double Bandeau)



Single Strap
Design

2-8015 The Bandeau - Standard Design *(Double Bandeau)*

2-8016 The Bandeau - Single Strap Design

2-8020 The Bandeau - One Size Fits All, 3" Wide Band *(Not Pictured)*

FEATURES

- Velcro® closures on both ends of the top strap so you can adjust angle and compression
- Soft padding strip to protect inframammary crease
- Available in 2" width or with top-strap lace for camisole look

COLOR

 Champagne

IDEAL FOR

- Submuscular breast augmentation
- Subglandular breast augmentation

SIZING CHART

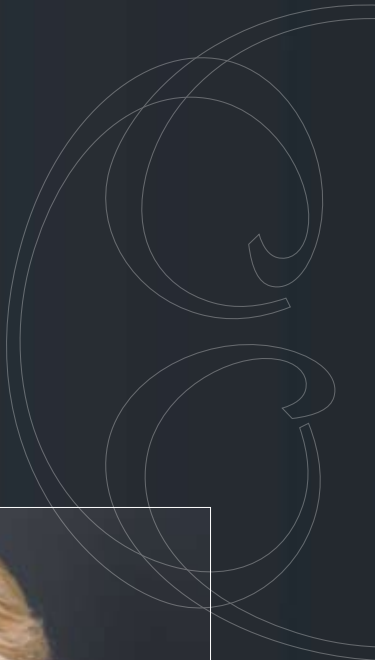
Chest	
Inches	Centimeters
32	81.3
34	86.4
36	91.4
38	96.5
40	101.6
42	106.7*

custom sizing available

*2-8016 only

Refer to price list for complete catalogue number.

Please note: Underwear shown in photos not available.



2-8125 Semi-Shaped White Cotton Bra

FEATURES

- Slightly contoured for added support and comfort
- Double fabric used for sizes 46 and up
- Front hook & eye closures

COLOR

White

IDEAL FOR

- Breast augmentation
- Breast reconstruction
- Breast reduction

SIZING CHART

Chest	
Inches	Centimeters
32	81.3
34	86.4
36	91.4
38	96.5
40	101.6
42	106.7
44	111.8
46	116.9

custom sizing available

Refer to price list for complete catalogue number.

Please note: Underwear shown in photos not available.



2-8126 Semi-Shaped Champagne Satin Bra with Velcro® Straps *(Not Pictured)*

2-8127 Semi-Shaped White Cotton Bra with Velcro® Straps

FEATURES

- Slightly contoured for added comfort and support
- Double fabric used for sizes 46 and up
- Detachable Velcro® straps
- Front hook & eye closures

COLOR

- Champagne
- White

IDEAL FOR

- Breast augmentation
- Breast reconstruction
- Breast reduction

SIZING CHART

Chest	
Inches	Centimeters
32	81.3
34	86.4
36	91.4
38	96.5
40	101.6
42	106.7
44	111.8
46	116.9

custom sizing available

Refer to price list for complete catalogue number.

Please note: Underwear shown in photos not available.


ABDOMINOPLASTY
COLLECTION





Beauty

At Caromed, we design our garments with an eye on beauty, style and elegance. Our classic satin finishes and Powernet fabrics are available in Black, Champagne, or Pink Passion™—each offering women a unique feeling of sophistication and stylish comfort.



Our new garment designs mirror fine French lingerie and our soft pallet of colors balances beautifully with European inspired laces, exemplifying attention to detail and combining graceful garment construction. Now women can feel rejuvenated and refined, recovering in style and recovering beautifully.



With an elegant design, Caromed's female abdominoplasty garments are made from lightweight, breathable Powernet fabric.

3-8005 Female Abdominoplasty Garment

FEATURES

- Made with lightweight, breathable Powernet fabric
- Features a standard 4" waistband (2" or 6" waistbands available as special order)
- Slit opening in the flap to accommodate urinary catheters
- Padded, easy-to-use zippers
- Velcro® flap crotch closure

COLORS

-  Black
-  Champagne

IDEAL FOR

- Lipectomy of the abdomen
- Traditional abdominoplasty

SIZING CHART

Size	Inches		Centimeters	
	Hip	Waist	Hip	Waist
XS	30 - 32	20 - 22	76.2 - 81.3	50.8 - 55.9
S	33 - 34	23 - 24	83.8 - 86.4	58.4 - 61.0
M	35 - 36	25 - 26	88.9 - 91.4	63.5 - 66.0
L	37 - 38	27 - 28	94.0 - 96.5	68.6 - 71.1
XL	40 - 43	30 - 33	101.6 - 109.2	76.2 - 83.8
XXL	44 - 46	34 - 36	111.8 - 116.8	86.4 - 91.4

custom sizing available
Refer to price list for complete catalogue number.



Caromed's comfortable, adjustable abdominoplasty garments offer precise control, which make them easy to apply.

3-8025 Adjustable Abdominoplasty Garment

FEATURES

- Adjustable Velcro® openings at the waist, abdomen and crotch
- Can be ordered for men with scrotal support pouch
- Slit opening in the flap to accommodate urinary catheters

COLORS

-  Black
-  Champagne

IDEAL FOR

- Lipoplasty of the trochanteric area, abdomen and flanks

SIZING CHART

Size	Inches		Centimeters	
	Hip	Waist	Hip	Waist
XS	30 - 32	20 - 22	76.2 - 81.3	50.8 - 55.9
S	33 - 34	23 - 24	83.8 - 86.4	58.4 - 61.0
M	35 - 36	25 - 26	88.9 - 91.4	63.5 - 66.0
L	37 - 38	27 - 28	94.0 - 96.5	68.6 - 71.1
XL	40 - 43	30 - 33	101.6 - 109.2	76.2 - 83.8
XXL	44 - 46	34 - 36	111.8 - 116.8	86.4 - 91.4

custom sizing available
Refer to price list for complete catalogue number.



Capri length



Abdomino/Lipoplasty Combination Girdles

4-8200 Capri Length 4-8212 Above-the-Knee 4-8213 Ankle Length*

FEATURES

- Lightweight, breathable Powernet fabric
- Hidden seaming on a reinforced panel for a smooth, sophisticated appearance
- Standard 6" waistbands (2" or 4" waistbands available as special order)
- Velcro® flap closure for precise abdominal compression
- Zippers with hook & eye closures for easy application in the operating room and at home

* Ankle length girdles are SPECIAL ORDER ONLY. See measurement instructions on pages 39-41.

COLORS

-  Black
-  Champagne
-  Pink

IDEAL FOR

- Abdominoplasty combined with lipoplasty of the trochanteric area, abdomen, thighs, hips, flanks and knees

SIZING CHART

Size	Inches		Centimeters	
	Hip	Waist	Hip	Waist
XS	33 - 34	23 - 24	83.8 - 86.4	58.4 - 61.0
S	35 - 36	25 - 26	88.9 - 91.4	63.5 - 66.0
M	37 - 38	27 - 28	94.0 - 96.5	68.6 - 71.1
L	40 - 43	30 - 33	101.6 - 109.2	76.2 - 83.8
XL	44 - 46	34 - 36	111.8 - 116.8	86.4 - 91.4
XXL	48 - 50	38 - 40	121.9 - 127.0	96.5 - 101.6

custom sizing available

Refer to price list for complete catalogue number.



LIPOPLASTY
COLLECTION

Comfort

Contemporary styles, elegant designs, and smooth comfortable fabrics define Caromed's new line of post surgical compression garments. Over the years, Caromed has gone to great lengths to identify fabric qualities and patterns that afford the greatest level of comfort and style in a compression garment; and that tradition continues today.

We offer a range of classic garments that are crafted with lightweight breathable Powernet and attractive satin-finish compression fabrics designed to raise the level of comfort patients desire as they recover and adjust to their new figure.

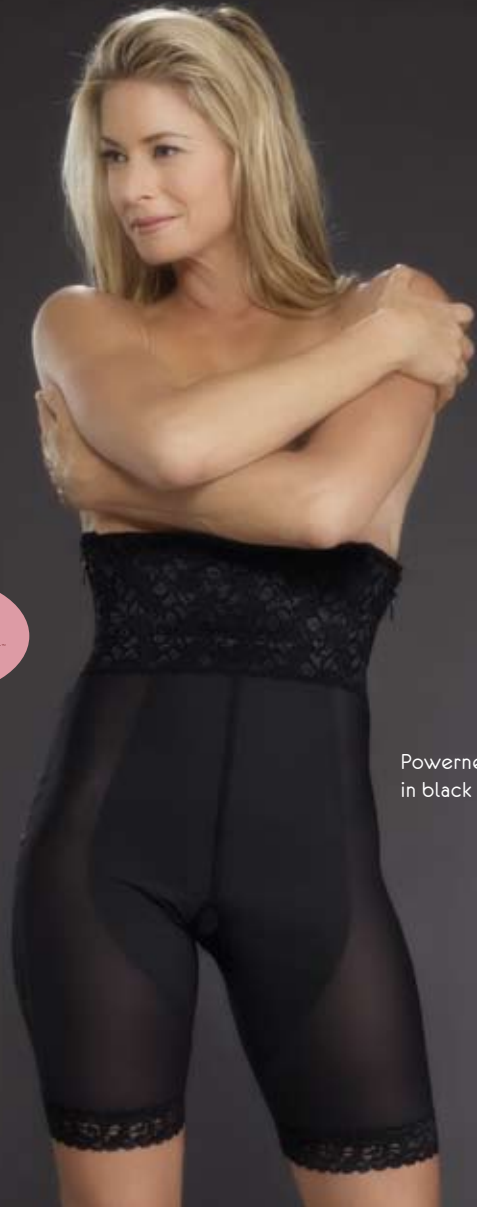
Our garments are designed with external seams, comfort-lined zippers, and hook & eye closures for easier application. Our attention to detail even includes the use of heat sealed comfort labels that don't itch or irritate your skin.

Caromed goes to such lengths to assure comfort because it's not enough to only feel beautiful after you recover. We believe you should feel beautiful and comfortable *while* you recover.

Our mid-thigh lipoplasty girdles feature French inspired lace and hidden seaming on a reinforced panel for an elegant, classy look.



Satin in champagne



Powernet in black

4-8011 Powernet Mid-Thigh Girdle

4-8511 Satin Mid-Thigh Girdle

FEATURES

- French inspired lace and hidden seaming on a reinforced panel for a smooth, sophisticated appearance
- Standard 4" waistbands (2" or 6" waistbands available as special order)
- Zippers with hook& eye closures for easy application in the operating room and at home
- Open crotch design for added comfort and convenience

COLORS

-  Black
-  Champagne
-  Pink

IDEAL FOR

- Lipoplasty of the trochanteric area, abdomen, thighs, hips, buttocks and flanks

SIZING CHART

Size	Inches		Centimeters	
	Hip	Waist	Hip	Waist
XS	33 - 34	23 - 24	83.8 - 86.4	58.4 - 61.0
S	35 - 36	25 - 26	88.9 - 91.4	63.5 - 66.0
M	37 - 38	27 - 28	94.0 - 96.5	68.6 - 71.1
L	40 - 43	30 - 33	101.6 - 109.2	76.2 - 83.8
XL	44 - 46	34 - 36	111.8 - 116.8	86.4 - 91.4
XXL	48 - 50	38 - 40	121.9 - 127.0	96.5 - 101.6
XXXL	52 - 54	42 - 44	132.0 - 137.0	107.0 - 112.0

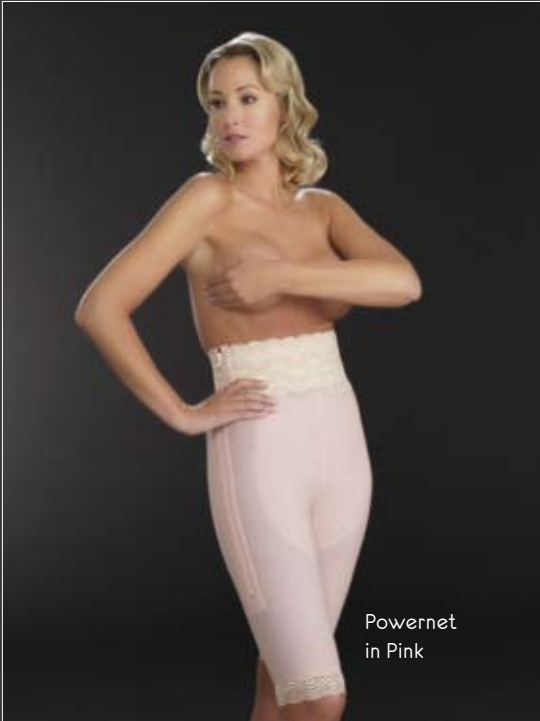
custom sizing available

Refer to price list for complete catalogue number.



Satin in champagne

Recover beautifully in our above-the-knee lipoplasty girdles that include French inspired lace and hidden seaming on a reinforced panel for a more stylish look.



Powernet in Pink



4-8012 Powernet Above-the-Knee Girdle
 4-8512 Satin Above-the-Knee Girdle

FEATURES

- French inspired lace and hidden seaming on a reinforced panel for a smooth, sophisticated appearance
- Standard 4" waistbands (2" or 6" waistbands available as special order)
- Zippers with hook & eye closures for easy application in the operating room and at home
- Open crotch design for added comfort and convenience

COLORS

-  Black
-  Champagne
-  Pink

IDEAL FOR

- Lipoplasty of the trochanteric area, abdomen, thighs, hips, buttocks and flanks

SIZING CHART

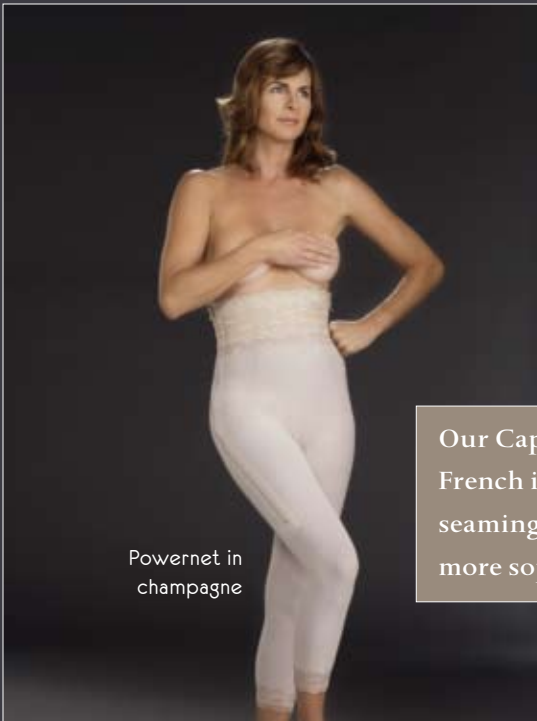
Size	Inches		Centimeters	
	Hip	Waist	Hip	Waist
XS	33 - 34	23 - 24	83.8 - 86.4	58.4 - 61.0
S	35 - 36	25 - 26	88.9 - 91.4	63.5 - 66.0
M	37 - 38	27 - 28	94.0 - 96.5	68.6 - 71.1
L	40 - 43	30 - 33	101.6 - 109.2	76.2 - 83.8
XL	44 - 46	34 - 36	111.8 - 116.8	86.4 - 91.4
XXL	48 - 50	38 - 40	121.9 - 127.0	96.5 - 101.6
XXXL	52 - 54	42 - 44	132.0 - 137.0	107.0 - 112.0

custom sizing available

Refer to price list for complete catalogue number.



Satin in Pink



Powernet in champagne



Our Capri lipoplasty girdles include French inspired lace and hidden seaming on a reinforced panel for a more sophisticated appearance.

4-8000 Powernet Capri Length Girdle
4-8500 Satin Capri Length Girdle

4-8013 Powernet Ankle Length Girdle*
4-8513 Satin Ankle Length Girdle*

FEATURES

- French inspired lace and hidden seaming on a reinforced panel for a smooth, sophisticated appearance
- Standard 4" waistbands (2" or 6" waistbands available as special order)
- Zippers with hook & eye closures for easy application in the operating room and at home
- Open crotch design for added comfort and convenience

COLORS

-  Black
-  Champagne
-  Pink

IDEAL FOR

- Lipoplasty of the trochanteric area, abdomen, thighs, hips, buttocks, flanks and knees

SIZING CHART

Size	Inches		Centimeters	
	Hip	Waist	Hip	Waist
XS	33 - 34	23 - 24	83.8 - 86.4	58.4 - 61.0
S	35 - 36	25 - 26	88.9 - 91.4	63.5 - 66.0
M	37 - 38	27 - 28	94.0 - 96.5	68.6 - 71.1
L	40 - 43	30 - 33	101.6 - 109.2	76.2 - 83.8
XL	44 - 46	34 - 36	111.8 - 116.8	86.4 - 91.4
XXL	48 - 50	38 - 40	121.9 - 127.0	96.5 - 101.6
XXXL	52 - 54	42 - 44	132.0 - 137.0	107.0 - 112.0

custom sizing available

Refer to price list for complete catalogue number.

* Ankle length girdles are SPECIAL ORDER ONLY. See measurement instructions on pages 39-41.



High back
satin in Pink



Satin in
champagne



4-4011 Powernet Mid-Thigh Suspended Girdle
4-4511 Satin Mid-Thigh Suspended Girdle

FEATURES

- French inspired lace and hidden seaming on a reinforced panel for a smooth, sophisticated appearance
- Full length zippers with hook & eye closures for easy application in the operating room and at home
- Front detachable suspender strap
- Available without zippers as a second-stage garment
- Open crotch design for added comfort and convenience
- Can be special ordered with a high back

COLORS

-  Black
-  Champagne
-  Pink

IDEAL FOR

- Lipoplasty of the trochanteric area, abdomen, thighs, hips, buttocks and flanks

SIZING CHART

Size	Inches		Centimeters	
	Hip	Waist	Hip	Waist
XS	33 - 34	23 - 24	83.8 - 86.4	58.4 - 61.0
S	35 - 36	25 - 26	88.9 - 91.4	63.5 - 66.0
M	37 - 38	27 - 28	94.0 - 96.5	68.6 - 71.1
L	40 - 43	30 - 33	101.6 - 109.2	76.2 - 83.8
XL	44 - 46	34 - 36	111.8 - 116.8	86.4 - 91.4
XXL	48 - 50	38 - 40	121.9 - 127.0	96.5 - 101.6

custom sizing available

Refer to price list for complete catalogue number.



Satin in black



Powernet in Pink



4-4012 Powernet Above-the-Knee Suspended Girdle

4-4512 Satin Above-the-Knee Suspended Girdle

FEATURES

- French inspired lace and hidden seaming on a reinforced panel for a smooth, sophisticated appearance
- Full length zippers with hook & eye closures for easy application in the operating room and at home
- Front detachable suspender strap
- Available without zippers as a second stage garment
- Open crotch design for added comfort and convenience
- Can be special ordered with a high back

COLORS

-  Black
-  Champagne
-  Pink

IDEAL FOR

- Lipoplasty of the trochanteric area, abdomen, thighs, hips, buttocks and flanks

SIZING CHART

Size	Inches		Centimeters	
	Hip	Waist	Hip	Waist
XS	33 - 34	23 - 24	83.8 - 86.4	58.4 - 61.0
S	35 - 36	25 - 26	88.9 - 91.4	63.5 - 66.0
M	37 - 38	27 - 28	94.0 - 96.5	68.6 - 71.1
L	40 - 43	30 - 33	101.6 - 109.2	76.2 - 83.8
XL	44 - 46	34 - 36	111.8 - 116.8	86.4 - 91.4
XXL	48 - 50	38 - 40	121.9 - 127.0	96.5 - 101.6

custom sizing available

Refer to price list for complete catalogue number.



Powernet in champagne



Satin in Pink

Suspended Girdles

4-4000 Powernet Capri

4-4500 Satin Capri

4-4013 Powernet Ankle Length*

4-4513 Satin Ankle Length*

FEATURES

- French inspired lace and hidden seaming on a reinforced panel for a smooth, sophisticated appearance
- Full length zippers with hook & eye closures for easy application in the operating room and at home
- Front detachable suspender strap
- Open crotch design for added comfort and convenience
- Can be special ordered with a high back

COLORS

-  Black
-  Champagne
-  Pink

IDEAL FOR

- Lipoplasty of the trochanteric area, abdomen, thighs, hips, buttocks, flanks and knees

SIZING CHART

Size	Inches		Centimeters	
	Hip	Waist	Hip	Waist
XS	33 - 34	23 - 24	83.8 - 86.4	58.4 - 61.0
S	35 - 36	25 - 26	88.9 - 91.4	63.5 - 66.0
M	37 - 38	27 - 28	94.0 - 96.5	68.6 - 71.1
L	40 - 43	30 - 33	101.6 - 109.2	76.2 - 83.8
XL	44 - 46	34 - 36	111.8 - 116.8	86.4 - 91.4
XXL	48 - 50	38 - 40	121.9 - 127.0	96.5 - 101.6

custom sizing available

* Ankle length girdles are SPECIAL ORDER ONLY. See measurement instructions on pages 39-41.



Elegant and comfortable, our one-piece garments combine body-shaping Powernet girdles attached to satin, semi-shaped bras with adjustable straps.

Capri bodysuit in champagne

Capri bodysuit in black

4-8552 Above-the-Knee Breast/Lipo Bodysuit
 4-8550 Capri Breast/Lipo Bodysuit

FEATURES

- Combination of lightweight, breathable Powernet and a soft satin bra top
- Semi- shaped bra with adjustable straps
- Comes standard with two full length zippers
- Available as a second stage bodysuit with or without zippers and without an open crotch
- Open crotch design for added comfort and convenience

COLORS

-  Black
-  Champagne

IDEAL FOR

- Procedures combining breast reduction, reconstruction or augmentation with multiple area lipoplasty

SIZING CHART

Size	Inches		Centimeters	
	Hip	Waist	Hip	Waist
XS	33 - 34	23 - 24	83.8 - 86.4	58.4 - 61.0
S	35 - 36	25 - 26	88.9 - 91.4	63.5 - 66.0
M	37 - 38	27 - 28	94.0 - 96.5	68.6 - 71.1
L	40 - 43	30 - 33	101.6 - 109.2	76.2 - 83.8
XL	44 - 46	34 - 36	111.8 - 116.8	86.4 - 91.4
XXL	48 - 50	38 - 40	121.9 - 127.0	96.5 - 101.6
Chest Sizes 32 - 44		Chest Sizes 81.3 - 111.8		

custom sizing available

Refer to price list for complete catalogue number.



UNISEX WAISTBINDER
COLLECTION



White Unisex One-Piece Waistbinders (One Flap)

3-8004-9 9" Width

3-8004-12 12" Width

3-8004-15 15" Width

FEATURES

- Soft, cotton liner wicks away moisture from the body
- X-shape elastic across the back ensures an ideal fit
- Reinforced back panel provides extra support
- Breathable fabric
- Available in 6" width as a special order

COLOR

White

IDEAL FOR

- Abdominoplasty
- Lipoplasty of the abdomen, flanks and midriff

SIZING CHART

Size	Waist	
	Inches	Centimeters
XS	22 - 24	55.9 - 61.0
S	26 - 28	66.0 - 71.1
M	30 - 36	76.2 - 91.4
L	38 - 42	96.5 - 106.7
XL	44 - 46	111.8 - 116.8
XXL	47 - 48	119.4 - 121.9
XXXL	50 - 51	127.0 - 129.5

custom sizing available
Refer to price list for complete catalogue number.

Please note: Underwear shown in photos not available.



Black Unisex One-Piece Waistbinders (One Flap)

3-8504-9 9" Width

3-8504-12 12" Width

3-8504-15 15" Width

FEATURES

- Soft, cotton liner wicks away moisture from the body
- X-shape elastic across the back ensures an ideal fit
- Reinforced back panel provides extra support
- Breathable fabric
- Available in 6" width as a special order

COLOR

■ Black

IDEAL FOR

- Abdominoplasty
- Lipoplasty of the abdomen, flanks and midriff

SIZING CHART

Size	Waist	
	Inches	Centimeters
XS	22 - 24	55.9 - 61.0
S	26 - 28	66.0 - 71.1
M	30 - 36	76.2 - 91.4
L	38 - 42	96.5 - 106.7
XL	44 - 46	111.8 - 116.8
XXL	47 - 48	119.4 - 121.9
XXXL	50 - 51	127.0 - 129.5

custom sizing available
Refer to price list for complete catalogue number.

Please note: Underwear shown in photos not available.



White Unisex Multi-Flap Waistbinders

3-8027-9 9" Width

3-8037-12 12" Width

3-8047-15 15" Width*

FEATURES

- Velcro® closures and a multi-flap design optimizes compression for an ideal fit and improved comfort
- Soft, cotton liner wicks away moisture from the body
- X-shape elastic across the back ensures they embrace the body
- 9" width waistbinders have two flaps; 12" and 15" width waistbinders have three flaps

COLOR

White

IDEAL FOR

- Abdominoplasty
- Lipoplasty of the abdomen, flanks and midriff

SIZING CHART

Size	Waist	
	Inches	Centimeters
XS	22 - 24	55.9 - 61.0
S	26 - 28	66.0 - 71.1
M	30 - 36	76.2 - 91.4
L	38 - 42	96.5 - 106.7
XL	44 - 46	111.8 - 116.8
XXL	47 - 48	119.4 - 121.9
XXXL	50 - 51	127.0 - 129.5

custom sizing available
Refer to price list for complete catalogue number.

*15" width multi-flap waistbinders are SPECIAL ORDER ONLY. See measurement instructions on pages 39-41.

Please note: Underwear shown in photos not available.



Black Unisex Multi-Flap Waistbinders

3-8527-9 9" Width

3-8537-12 12" Width

3-8547-15 15" Width*

FEATURES

- Velcro® closures and a multi-flap design optimizes compression for an ideal fit and improved comfort
- Soft, cotton liner wicks away moisture from the body
- X-shape elastic across the back ensures they embrace the body
- 9" width waistbinders have two flaps; 12" and 15" width waistbinders have three flaps

COLOR

 Black

IDEAL FOR

- Abdominoplasty
- Lipoplasty of the abdomen, flanks and midriff

SIZING CHART

Size	Waist	
	Inches	Centimeters
XS	22 - 24	55.9 - 61.0
S	26 - 28	66.0 - 71.1
M	30 - 36	76.2 - 91.4
L	38 - 42	96.5 - 106.7
XL	44 - 46	111.8 - 116.8
XXL	47 - 48	119.4 - 121.9
XXXL	50 - 51	127.0 - 129.5

custom sizing available
Refer to price list for complete catalogue number.

*15" width multi-flap waistbinders are SPECIAL ORDER ONLY. See measurement instructions on pages 39-41.

Please note: Underwear shown in photos not available.



MALE GARMENT
COLLECTION



2-8003 Male Compression Vest

FEATURES

- Lightweight, breathable Powernet fabric
- Double-reinforced front panels
- Comfortable Velcro® shoulder straps
- Easy-to-use zipper and hook & eye closures
- 2" elastic waistband

COLORS



Black



Beige

IDEAL FOR

- Gynecomastia procedures
- Lipoplasty of the back, midriff and flanks

SIZING CHART

Size	Inches		Centimeters	
	Chest	Waist	Chest	Waist
XS	30 - 32	34	76.2 - 81.3	86.4
S	34 - 36	36	86.4 - 91.4	91.4
M	38 - 40	38	96.5 - 101.6	96.5
L	42 - 44	40	106.7 - 111.8	101.6
XL	46 - 48	42	116.8 - 121.9	106.7
XXL	50 - 52	44	127.0 - 132.1	111.8

custom sizing available

Refer to price list for complete catalogue number.



3-9000 Male Abdominoplasty Garment, without Zippers *(Not Pictured)*

3-9005 Male Abdominoplasty Garment

FEATURES

- Lightweight, breathable Powernet fabric
- Velcro® flap closure
- Reinforced, double-zipper front closure
- Scrotal support pouch
- Standard 4" waistband (2" or 6" waistband available as special order)

COLORS

- Black
- Beige

IDEAL FOR

- Traditional abdominoplasty
- Lipectomy of the abdomen

SIZING CHART

Size	Waist	
	Inches	Centimeters
XS	26 - 27	66.0 - 68.6
S	28 - 30	71.1 - 76.2
M	32 - 34	81.3 - 86.4
L	36 - 38	91.4 - 96.5
XL	40 - 42	101.6 - 106.7
XXL	44 - 46	111.8 - 116.8

custom sizing available

Refer to price list for complete catalogue number.



4-8100 Male Below-the-Knee Girdle

FEATURES

- Lightweight, breathable Powernet fabric
- Convenient open crotch
- Double-reinforced front panels
- Optional scrotal support and suspenders (available on request)
- Standard 4" waistband (2" or 6" waistband available as special order)

COLORS

-  Black
-  Beige

IDEAL FOR

- Lipoplasty of the trochanteric area, the abdomen or thighs, hips, buttocks, flanks and knees

SIZING CHART

Size	Waist	
	Inches	Centimeters
XS	26 - 27	66.0 - 68.6
S	28 - 30	71.1 - 76.2
M	32 - 34	81.3 - 86.4
L	36 - 38	91.4 - 96.5
XL	40 - 42	101.6 - 106.7
XXL	44 - 46	111.8 - 116.8

custom sizing available

Refer to price list for complete catalogue number.



- 4-8112 Male Above-the-Knee Girdle
- 4-8113 Male Ankle-Length Girdle* (Not Pictured)

FEATURES

- Lightweight, breathable Powernet fabric
- Convenient open crotch
- Double-reinforced front panels
- Optional scrotal support and suspenders (available on request)
- Standard 4" waistband (2" or 6" waistband available as special order)

COLORS

- Black
- Beige

IDEAL FOR

- Lipoplasty of the trochanteric area, the abdomen or thighs, hips, buttocks and flanks

SIZING CHART

Size	Waist	
	Inches	Centimeters
XS	26 - 27	66.0 - 68.6
S	28 - 30	71.1 - 76.2
M	32 - 34	81.3 - 86.4
L	36 - 38	91.4 - 96.5
XL	40 - 42	101.6 - 106.7
XXL	44 - 46	111.8 - 116.8

custom sizing available
 Refer to price list for complete catalogue number.

* Ankle length girdles are SPECIAL ORDER ONLY. See measurement instructions on pages 39-41.



HEAD AND NECK
COLLECTION



1-8006 Chin-Neck Bandage

FEATURE

- Lightweight, breathable fabric

COLOR

 Beige

IDEAL FOR

- Facial surgery
- Neck surgery
- Submental region surgery
- Mentoplasty and/or chin implants
- Ear or periaural procedures
- Oral and maxillofacial surgery
- Pediatric facial surgery

SIZING CHART

Size	Inches		Centimeters	
	Neck	Head	Neck	Head
XS	13	18	33.0	45.7
S	14	20	35.6	50.8
M	15	22	38.1	55.9
L	16	24	40.6	61.0
XL	17	26	43.2	66.0

custom and pediatric sizing available

Refer to price list for complete catalogue number.



1-8011 Ear Bandage

FEATURE

- Lightweight, breathable fabric
- Includes an under-chin strap

COLOR

 Beige

IDEAL FOR

- Ear reconstruction
- Skin or cartilage grafts
- Otoplasty
- Pediatric facial surgery

SIZING CHART

Size	Inches		Centimeters	
	Neck	Head	Neck	Head
XXS	12	16	30.5	40.6
XS	13	18	33.0	45.7
S	14	20	35.6	50.8
M	15	22	38.1	55.9
L	16	24	40.6	61.0
XL	17	26	43.2	66.0

custom and pediatric sizing available

Refer to price list for complete catalogue number.

All of our gel packs allow for immediate cold therapy, and can also be conveniently heated for warm therapy.



- 1-8018 Therma-Jaw Bandage with Gel Packs
- 1-8019 Therma-Jaw Bandage without Gel Packs
- 1-8017 Two Gel Packs (*Bandage Not Included*)

FEATURES

- Lightweight, breathable fabric
- Bilateral pockets of soft fabric securely hold the gel packs in place

COLOR

Beige

IDEAL FOR

- Temporomandibular joint surgery or disease
- Craniofacial surgery
- Orthognathic procedures
- Rhytidectomy, parotidectomy surgery
- Oral and maxillofacial surgery
- Pediatric facial surgery

SIZING CHART

Size	Inches		Centimeters	
	Neck	Head	Neck	Head
XS	13	18	33.0	45.7
S	14	20	35.6	50.8
M	15	22	38.1	55.9
L	16	24	40.6	61.0
XL	17	26	43.2	66.0

custom and pediatric sizing available

Refer to price list for complete catalogue number.



Our face lift bandage is uniquely designed so ear slits can be cut for added comfort without the fabric unraveling.

1-8026 Face Lift Bandage

FEATURES

- Lightweight, breathable fabric
- Ear slits can be cut for added comfort without the fabric unraveling

COLOR

 Beige

IDEAL FOR

- Facial surgery
- Rhytidectomy surgery
- Neck surgery
- Submental region surgery
- Mentoplasty and/or chin implants
- Ear or periaural procedures
- Oral and maxillofacial surgery
- Pediatric facial surgery

SIZING CHART

Size	Inches		Centimeters	
	Neck	Head	Neck	Head
XS	13	18	33.0	45.7
S	14	20	35.6	50.8
M	15	22	38.1	55.9
L	16	24	40.6	61.0
XL	17	26	43.2	66.0

custom and pediatric sizing available

Refer to price list for complete catalogue number.



1-8007 Full Face Bandage

FEATURES

- Lightweight, breathable fabric

COLOR

 Beige

IDEAL FOR

- Facial surgery
- Rhytidectomy and dermabrasion procedures
- Malar implant surgery
- Pediatric facial surgery

SIZING CHART

Size	Inches		Centimeters	
	Neck	Head	Neck	Head
XS	13	18	33.0	45.7
S	14	20	35.6	50.8
M	15	22	38.1	55.9
L	16	24	40.6	61.0
XL	17	26	43.2	66.0

custom and pediatric sizing available

Refer to price list for complete catalogue number.



Custom Garment Measuring Instructions

A precise fit requires specific measurements. The following guidelines provide you with needed measurements and how-to-measure graphs. Custom orders should be faxed to:

1-866-225-2873 (Domestic Customers)

+1 805-967-7108 (International Customers)

When ordering your custom garment from outside the United States, please allow a 3-4 week lead time. Please refer to the diagram's corresponding areas to measure.

Custom Head and Ear Bandage

Record the following measurements on the custom garment order form.

- (A) horizontal head circumference (see following page)
- (B) vertical head circumference
- (C) neck (see following page)

Custom Vests and Bras

Record the following measurements on the custom garment order form.

Item #	Description	Measurements
2-8002	shaped compression vest	D, E, F, G, H
2-8003	male compression vest	D, E, F, G, H
2-8008	bra-vest with cups	D, E, F, G, H
2-8014	female compression vest	D, E, F, G, H
2-8015/ 2-8016	bandeau	E, F, G
2-8124	post augmentation bra	D, E, F, G, H
2-8125	semi-shaped bra	D, E, F, G, H
2-8126	semi-shaped bra	D, E, F, G, H
2-8126EL	reconstruction sports bra	D, E, F, G, H
2-8127	semi-shaped bra	D, E, F, G, H

See page 40 for measurements F, G and H



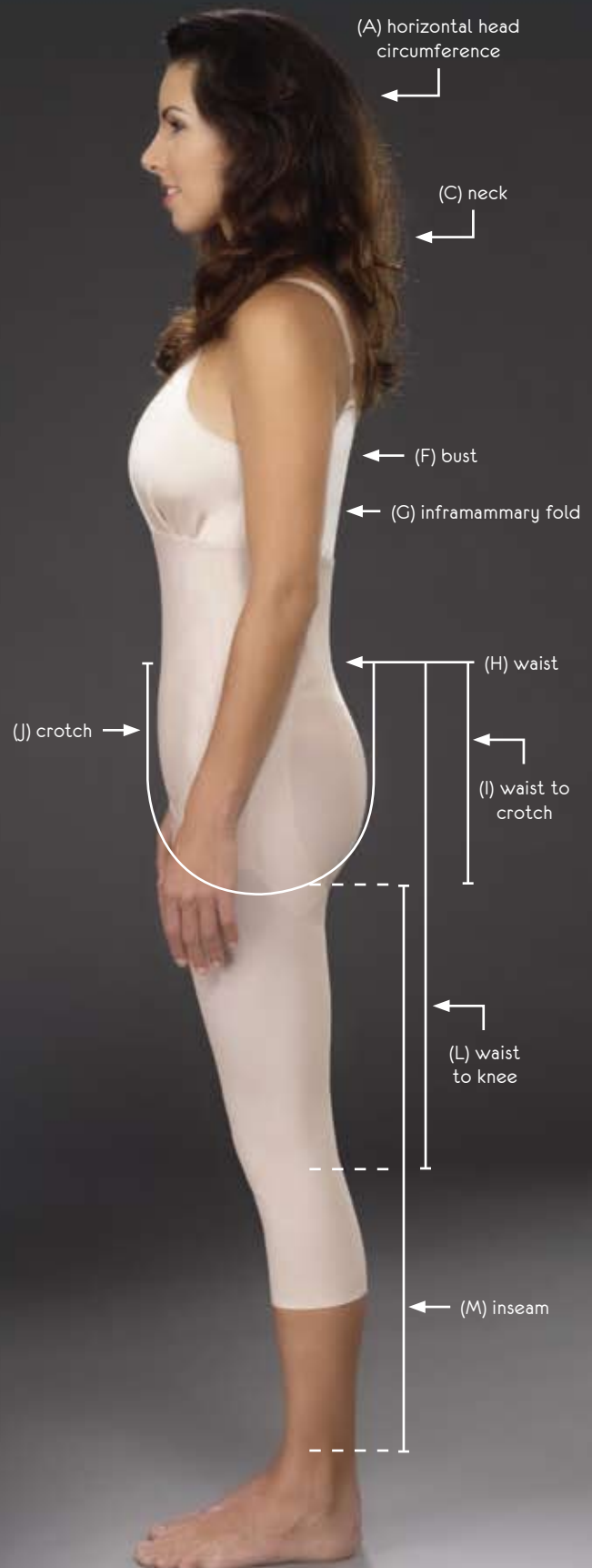
Custom Garment Measuring Instructions

Custom Girdles/Abdominal Garments/Waistbinders

Record the following measurements on the custom garment order form.

Item #	Description	Measurements
3-8004/ 3-8504	waistbinder	E, H, I, K
3-8027/ 3-8037/ 3-8047	waistbinder	E, H, I, K
3-8527/ 3-8537/ 3-8547	waistbinder	E, H, I, K
3-8005	abdominoplasty garment	H, I, J, K, N
3-8025	abdominoplasty garment	H, I, J, K, N
3-9000/ 3-9005	male abdominoplasty	H, I, J, K, N
4-8011/ 4-8511	mid-thigh girdle	H-P
4-8012/ 4-8512	above-the-knee girdle	H-Q
4-8000/ 4-8500	capri length girdle	H-U
4-8013/ 4-8513	ankle-length girdle	H-U
4-4011/ 4-4511	mid-thigh suspended girdle	H-P
4-4012/ 4-4512	above-the-knee suspended girdle	H-Q
4-4000/ 4-4500	capri length suspended girdle	H-U
4-4013/ 4-4513	ankle-length suspended girdle	H-U
4-8200	capri abdomino/lipo girdle	H-U
4-8212	above-the-knee abdomino/lipo girdle	H-Q
4-8213	ankle-length abdomino/lipo girdle	H-U
4-8552	above-the-knee bodysuit	H-Q
4-8550	capri length bodysuit	H-U
4-8100	male below-the-knee girdle	H-U
4-8112	male above-the-knee girdle	H-Q
4-8113	male ankle-length girdle	H-U

See page 39 for measurements E, K and N-U



Custom Garment Measuring Instructions



Custom Arm Bandage (5-8030 and 5-8035)

Record the following measurements on the custom garment order form (Female - include bra and cup size).

Arm Length Measurements

- (V1.0) shoulder to elbow
- (V1.1) shoulder to wrist

Arm Circumferential Measurements

- (W1.0) upper arm deltoid (next to shoulder)
- (W1.1) mid-upper arm
- (W1.2) elbow
- (W1.3) mid-forearm
- (W1.4) wrist
- (X) shoulder to shoulder
- (Y) bra and cup size



Custom Garment Order Form

Fax this form to: 866-225-2873

International customers: +1 805 967 7108

Physician Name _____ Date _____

Phone Number _____ Fax Number _____

Account # _____ Customer Order # _____

Surgery Date _____ Date Garment(s) Needed _____

Custom Items Ordered _____

Procedure _____

Patient Height _____ Patient Weight _____

Patient Name _____

MEASUREMENTS

Refer to diagrams on pages 39 to 41 in order to assure that the areas measured are accurate, needed for your specific garment and correspond directly to each letter.

Measurement	Description	Custom Measurements	
A	Circumference of head measured horizontally		
B	Circumference of head measured vertically		
C	Circumference of neck		
D	Shoulder width		
E	Shoulder to natural waistline		
F	Bust (fullest part)		
G	Circumference of chest at inframammary fold		
H	Waistline		
I	Waist to crotch		
J	Crotch (measure from natural waistline through crotch area to back of waistline)		
K	Hip (fullest part)		
L	Natural waistline to knee		
M	Inseam (measure from upper inner thigh to ankle)	Left:	Right:
N	Circumference of upper thigh	Left:	Right:
O	Circumference of mid-thigh	Left:	Right:
P	Circumference of leg (2" above the knee)	Left:	Right:
Q	Circumference of knee	Left:	Right:
R	Circumference of leg (2" below the knee)	Left:	Right:
S	Circumference of upper calf	Left:	Right:
T	Circumference of mid-calf	Left:	Right:
U	Circumference of ankle	Left:	Right:
V 1.0*	Arm length measurement – shoulder to elbow		
V 1.1*	Arm length measurement – shoulder to wrist		
W 1.0*	Arm circumferential measurement – upper arm deltoid (next to shoulder)		
W 1.1*	Arm circumferential measurement – mid-upper arm		
W 1.2*	Arm circumferential measurement – elbow		
W 1.3*	Arm circumferential measurement – mid-forearm		
W 1.4*	Arm circumferential measurement – wrist		
X	Arm circumferential measurement – Shoulder to shoulder		
Y	Male chest size		
Y	Bra and cup size		

* To order custom arm bandage #5-8030, all measurements under sections V and W are required.

Patient Care Instructions

When applying and caring for your Caromed compression garment at home, please follow these instructions carefully. Your garment is a medical device, designed and manufactured to help provide you with optimal cosmetic results.

Caromed recommends that someone assist you with your at-home garment application. Again, follow the instructions one step at a time, and take your time.

Application of your Caromed garment is a step-by-step process. Caromed garments are designed for ease of application; however, since this garment is a medical device, we ask that you follow all instructions carefully for best results.

HELPFUL TIPS

To apply your Caromed garment at home: If you have just showered, make certain that you are completely dry before applying your Caromed garment. Assume a seated position on a bed or comfortable chair. If at any time during the application of your girdle, you become fatigued, please take a minute to rest.

GIRDLES

While seated, fasten the girdle up to the knee area. Secure both the hook & eyes closures and zippers.

Remain seated, step into the girdle and position the girdle properly, gently pulling the girdle into place. While standing propped near your chair or bed, pull the girdle up making sure to position the crotch opening as far up as possible.

Fasten the remaining hook & eye closures on one side only. Carefully pull up the zipper. Now fasten the hook & eye closures on the remaining side. This side will be somewhat more difficult to secure and we recommend that someone be present to provide assistance. After the hook & eye closures are secured, carefully zip up this side.

PLEASE USE EXTRA CAUTION TO AVOID CATCHING THE ZIPPER IN THE INNER FACING.

Important: If the zipper becomes snagged – **STOP IMMEDIATELY. DO NOT** attempt to force the zipper in any direction. Remove the entire garment completely. This alleviates the tension placed on the zipper. You now will be able to gently work with the zipper until it is freed from the facing.

Urination: Caromed recommends that all female patients purchase a small, flexible plastic funnel to position close to the perineum when voiding. This will prevent accidental splashing or spraying of the garment. Voiding in the standing position will probably be more comfortable the first few days following surgery.

Elimination: We recommend that you unzip one side, drop the flap, hold securely to one side and elimination can be accomplished quite easily without soiling the garment.

Laundering: Caromed recommends that you hand wash your Caromed garment in lukewarm water with a mild soap or detergent, then air dry. Please do not dry your garment in an electric or gas dryer as this may ruin the garment.

MOST PATIENTS REQUIRE TWO GARMENTS IN ORDER TO HAVE A FRESHLY LAUNDERED ONE AVAILABLE

To remove bloodstains, simply soak your garment in a basin of cool water to which 1/4 cup of peroxide has been added. Then launder and let air-dry.

Terms and Conditions

PRODUCT RETURNS

Customers within the U.S. may return product for credit directly to our Texas facility provided they include a copy of the packing slip that came with the product. The product must be in its original packaging and in resalable condition. Product returns more than 60 days after the invoice date are subject to restocking fees. Product returned more than 6 months after the invoice date is not eligible for credit. For customers outside the U.S., please contact us to arrange for a Return Goods Authorization. Product should be returned to our warehouse by a traceable method:

MENTOR

Attention: Product Returns
3025 Skyway Circle Drive
Irving, Texas 75038

Please Note: Custom garments are **NOT RETURNABLE** as they are manufactured to the precise specifications of the patient and cannot be resold.

ACCOUNT QUESTIONS

If you have account inquiries or questions about your invoice; you may contact your Customer Account Representative or our Accounts Receivable Department at:

Telephone: (800) 235-5731
Fax: (805) 879-6001

Or contact us in writing at:

MENTOR

Attention: Aesthetics Products
P.O. Box 946
Santa Barbara, CA 93117

PAYMENT DEDUCTIONS

Any payment deductions from the invoiced amount due to pricing errors and shortages must be submitted in writing within 30 days of the invoice date. Proof of delivery must be requested within 30 days of invoice date.

CREDIT MEMOS

If you have an open credit memo on your account, please use it to reduce your next payment. Please note which invoices and credit memos you are using on your payment to help us maintain your account accurately. Credit memos expire two years from date of document.

PAYMENT TERMS

Your acceptance of product on the invoice indicates agreement to pay within the standard terms shown on the face of the invoice. We prefer payment by check to our remittance address printed on the face of the invoice. You may also use VISA, MasterCard or American Express to pay the invoice by calling your Customer Account Representative at (800) 235-5731. If you have a question or problem with any aspect of the invoice, it is important to contact us immediately.

SALES TAXES

Applicable sales taxes will be charged to all customers unless a valid exemption or resale certificate is provided to MENTOR at the following mailing address:

MENTOR

Attention: Tax Department
201 Mentor Drive
Santa Barbara, CA 93111

PRICE REPORTING

The customer is required to report the actual price charged by MENTOR, including any future adjustments thereto, to all applicable federal and state agencies.

THANK YOU FOR LETTING US SERVE YOU.



Manufactured by:

CAROMED INTERNATIONAL, INC.

5605 Spring Court
Raleigh, NC 27616
Toll free: 1-800-948-1938
Phone: 919-878-0578
Fax: 919-876-1610

EU Authorized Representative:

MENTOR MEDICAL SYSTEMS, BV

Zernikedreef 2
2333 CL
Leiden
The Netherlands
Tel: (31) 71 52 49 600
Fax: (31) 71 52 17 422

Distributed by:



Mentor Corporation

201 Mentor Drive
Santa Barbara, CA 93111 USA
Tel: 805-879-6000
Customer Service: 800-235-5731
Fax: 805-967-7108
www.mentorcorp.com

byron body aesthetics by  **MENTOR**®