

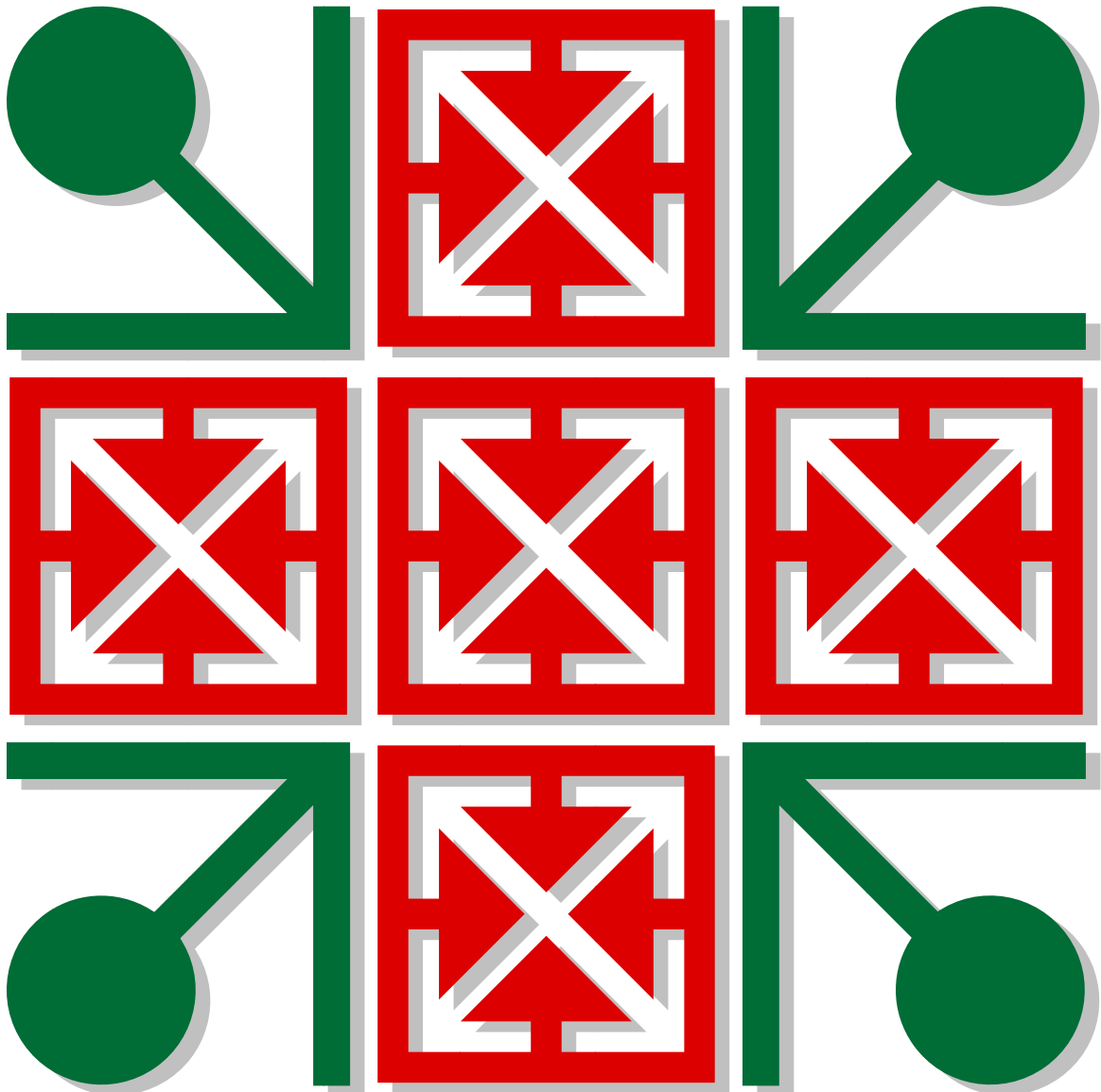
# Sixth Form Curriculum and Options

Exciting courses for future careers 2012-2014



**Llantwit Major School**  
**Ysgol Llanilltud Fawr**

*A School for the 21<sup>st</sup> Century at the Heart of the Community*



At Llantwit Major School...

We believe that:

*People are our greatest asset*

We are therefore committed to ...

- ▶ Setting the highest expectations, to ensure students become independent learners, and attain the knowledge, skills, understanding and qualifications for success in the 21st Century.
- ▶ Creating an ethos which demands high regard for self and others, and ensures that each student makes a positive contribution to the community and wider society.
- ▶ Providing a stimulating, challenging and supportive curriculum which meets the needs and interests of all learners and celebrates success for all.
- ▶ Developing dynamic and meaningful partnerships between the School and the wider community which have, at the core, the aim to raise attainment and promote learning as a lifelong activity. ICT plays a crucial role in all aspects of the School life and the achievement of all of our objectives.

## Any questions?

### Why should I stay on in school?

There are many advantages to continuing your education, whether in Llantwit Major Sixth Form, or elsewhere. Obviously you will gain extra qualifications which are needed for you to access courses at universities and colleges, and employers also look for evidence of education beyond GCSE. But there are also other benefits to staying on an extra year or two:-

You give yourself the time to develop as a person, to become more mature and enhance the social skills necessary for the outside world.

Other skills such as time management and independent study will develop, proving to admissions tutors and employers that you are adaptable and can work using your own initiative.

And continuing your education with us in Llantwit Major Sixth Form has many benefits of its own:-

- ▶ You know the school and the school knows you!
- ▶ Familiar teachers and surroundings will help you settle in quickly.
- ▶ Because we know in advance which courses are running and how many students we will have, you will start your course in the first week of term - enrolment in the Sixth Form will only take one day.
- ▶ The vast majority of classes are small and all are run by experienced Sixth Form teachers.
- ▶ Textbooks and many other resources are supplied by the departments.
- ▶ We have great facilities such as a comfortable Common Room, and a Study Room for the use only of Sixth Form students, complete with access to 30 computers.
- ▶ We provide excellent pastoral support to help you through problems both academic and personal.
- ▶ You will have access to plenty of help and advice on what to do when you leave the Sixth Form.
- ▶ We provide you with endless opportunities to participate in extra-curricular activities outside the classroom to enrich your time with us.

Information for new students to Llantwit Major Sixth Form who are moving from another school:

- Please make yourself known to us at some point during the Open Evening
- If you would like to visit the school again, please contact Mrs Viggers, the Sixth Form PPSO to arrange a time - an option form can be returned to the school at this point
- We will then write to you later in the school year giving you advice on what to do next with regard to letting the school know about your GCSE results and when the school will be open to discuss any further advice you may need with regard to option changes etc
- We always have a number of new students from other schools and you will be made very welcome!

## What qualifications do I need to get into the Sixth Form?

We have what is called an “open” Sixth Form which means we try to offer courses appropriate to students of all abilities. Clearly we want everyone to succeed and we will advise students on what is the best course of study for them and make sure they have reached the required level to progress onto a specific course.

To enter Year 12 you will need:

1. A minimum of 5 GCSE's at grade C or above. If you have taken Btec qualifications in Years 10 and 11, we also want to see evidence of C grades in some GCSE subjects before agreeing to you starting AS level courses. We offer two Btecs at Level 3 in the Sixth Form which are a progression from the Level 2 ones taken in Years 10 and 11. We will also consider two grade C or above short course GCSE's as one of your 5 if you have evidence of good GCSE passes in other subjects.
2. The entry requirement of most departments is at least a C at GCSE in the subject you wish to study at AS level. These subjects appear as 'Essential' subjects in the departments' information.
3. Some departments will let you study their subject at AS Level without having taken it at GCSE, but will want to see evidence of ability in a similar subject eg Sociology will accept you at AS Level with a grade C in English or a Humanities subject.
4. Some departments have other requirements eg to study a Science at AS Level you should have at least BB grades at Higher Level and to study Mathematics at AS Level you must have at least a B grade at GCSE after studying the Higher Tier course.
5. Some departments may prefer you to have a GCSE at grade C in other subjects too - these appear as 'preferable' subjects in the departments' information eg to study Biology at AS level it is preferable that you also have a C grade in maths. *If in doubt, check the information for specific departments later on in the prospectus.*
6. GCSE English language and mathematics - regardless of your chosen subjects at AS level, we would prefer you to have at least a C grade in these two subjects. If you haven't, you will be expected to resit. Employers and universities expect these qualifications.

*If in doubt, check the information for specific departments later on in the prospectus.*

## How many subjects should I study at AS Level?

All our AS level students study the Welsh Baccalaureate Advanced Diploma alongside their AS level subjects. The number of AS level subjects you study will depend on your GCSE grade. What we recommend is:

Mostly A\*/A/B grades - Welsh Bac' plus 4 AS Level/Btec National Award subjects

Mostly B/C grades - Welsh Bac' plus 3 AS Level/Btec National Award subjects

To continue with your studies in a subject in Year 13, you must have achieved at least an E grade at AS Level and a minimum of 2 A level subjects must be studied.

## What is the Welsh Baccalaureate ('Bac')?

The WBO, or Welsh Bac' is an exciting new development that we first introduced for our AS level students two years ago. It will allow you to study your AS Level subjects while at the same time broadening your whole learning experience. Worth an A grade or 120 UCAS points, the Welsh Bac will offer you the opportunity to have a wider variety of experiences while gaining valuable Key Skills, work experience, and voluntary work with the added advantage of a Personal Tutor and regular one to one tutoring and support. And the good news is you do not sit an exam! All work for the Welsh Bac is completed in a Diary and Key Skills Portfolio

## What topics and activities make up the Welsh Bac?

### Key Skills

Communication at Level 3

Application of number at Level 2

Information technology at Level 2

Working with others at Level 3

Improving own learning and performance at Level 3

Problem solving at Level 2

### Core topics

Contemporary issues affecting Wales, Europe and the World eg global citizenship, sustainability, international cultural influences, the position of the Welsh language, the importance of involvement in the democratic process

Contemporary PSE issues eg healthy lifestyles, social problems, positive relationships

A foreign language and culture module

### Welsh Bac activities

Team Enterprise Activity - a group fund raising activity

Work Experience - a week working with an employer related to a career that interests you

Community Participation - time spent volunteering to help others

Welsh Bac weeks - two weeks of activities spent outside the classroom

## What help will I get if I need it?

As in previous years, you will be in a form group, known in the Sixth Form as a Tutor Group. Your Personal Tutor will get to know you very well and will want to build up a good relationship with you, for example monitoring your attendance and giving you advice on study skills. AS Level students will have one half hour tutorial with their Personal Tutors every half term, plus Group Tutorials in what is known as 'form period' lower down the school. Attendance at Group Tutorials is compulsory and much of the Welsh Bac work is completed then.

Your Personal Tutor will also help monitor your progress and will be there to discuss any problems you have.

Also able to give you advise are Mrs K Winstone Cooper, Leader of Learning, Upper School and Mrs Viggers, the Upper School PPSO. They can be approached at any time to discuss problems whether academic or personal and Mrs Viggers will also be involved in liaising with your parents.

For the vast majority of students, their time in the Sixth Form passes by with few problems, but we do have procedures in place to ensure that you get the best out of your time here, such as an attendance policy and a contract.

Academic progress is monitored regularly by way of Self-Assessment interviews with your Personal Tutor which take place every half term

Regular communication is maintained with subject tutors and parents if and when needed so that support and guidance can be given.

You can be assured that you will be fully supported throughout your time in the Sixth Form: we know that it can be a challenging time for some students and we want to make it run as smoothly as possible for you.

### **What difference will I see on my timetable?**

The majority of your spare time should be spent in the Study Room, working independently - we recommend that for every hour you spend on a subject in the classroom you put in another hour of your own time. But of course, you will need time to relax and this can be done in the Common Room or the Canteen.

You will have 9 lessons per AS Level subject. You will also have the following lessons: Welsh Bac, Key Skills, and Careers

### **What can I do in the Sixth Form apart from studying?**

As part of the Welsh Bac, you will take part in a number of activities outside the classroom:

Team Enterprise Activity

Work Experience

Community Participation

Welsh Bac weeks

There are also other responsibilities you can take on; just some of them are listed below:

Senior Prefect

Paired Reading

Chips counselling

Dragon Sports

Form Representative

House Captain

### **What help will I get with Careers Guidance?**

The Work Related Education department is run by Mrs S Gifford.

The Careers Education Programme as part of the WBQ in school is designed to ensure that students have a good understanding of career opportunities. Mrs Gifford is involved in the planning of appropriate activities such as visits to local companies and school-based talks by employers' representatives.

The Careers Advisor from "Careers Wales" will also provide you with regular guidance and counselling to ensure that you have all the help you need to make the right decisions about your future.



## What help will I get with university applications?

You will be supported fully through the whole process, whether you are certain about what you want to do or have no idea at all. Applications are now carried out electronically and full training and support is given for this. We encourage all students who apply to take advantage of Open Days and other visits, some of which we arrange for you. Help will be supplied with making choices, writing personal statements and mock interviews will also be carried out if you wish. Those students applying for medicine or Oxbridge colleges are given the additional help they need.

## What about finances?

We fully support students applications for the Educational Maintenance Allowance and many of our students are entitled to this means tested payment to help them stay on in full-time education.

Guidance and support is given with attendance to ensure students receive regular payments and encouragement is given to help them work towards the bonus payments that are available.

## What happens next?

- ▶ Options Evening - you will be given an options form with this handbook at the Open Evening. *If you did not attend then ask your form tutor or Mrs Viggers for a form. Her office is in the Study Room in E Block.*
- ▶ You should return your completed Options Form to your Form Tutor. The deadline for this is **Monday 6<sup>th</sup> February 2012**. *If you lose the form then ask for another one.* By this date you will have had time to think about the subjects you wish to study in Year 12 having listened to and talked to subject teachers as well as reading the prospectus carefully.
- ▶ 'Clashes' - the option columns are drawn up and used to survey the combination of subjects most students wish to study. Despite this it is inevitable that some students will have 'clashes'. If you do, let us know and the feedback will be considered but it important to remember option columns are structured as a best fit for the majority of students.
- ▶ Class sizes: if a subject only attracts a very small number of students we have no guarantee that this subject will then go ahead or run with the full number of lessons.
- ▶ Options interviews with Mrs Winstone Cooper, Mr Davies and Mrs Greville will start shortly after the forms have been collected in so that we can all be sure you are making the right decision.
- ▶ August - results day!
- ▶ September - it is possible that once you have received your GCSE results you may wish to change your mind about your options. You will be given a day in the first week of term when this can be discussed and changes made if necessary.

## Decision Time

It is best to try and make your decision early. We will accept you on to a course as late as the first day of term, but it is better for everyone, especially you, if you read this handbook in plenty of time and think carefully about what you want to do at the end of Year 11. Advertisements for apprenticeships or jobs appear any time after Easter so you need to think now about your future.

If you do choose to return to Llantwit Major Sixth Form, and we hope you do, it must be your decision and made for the right reasons. We want students who are ready to face the new and exciting challenges of life in the Sixth Form: students who are willing to work hard and make the most of their time here in what is a crucial stage in their education.

<b>Core Subjects</b>	<b>Option Choices</b>				
<i>All students will study a core body of</i>	<i>ALL students are required to choose a subject from a maximum of 4 out of the 5 columns</i>				
<ul style="list-style-type: none"> <li>• Welsh</li> <li>Bac.</li> <li>• Key Skills</li> <li>• Careers</li> </ul>	<b>Option A</b>	<b>Option B</b>	<b>Option C</b>	<b>Option D</b>	<b>Option E</b>
	Product Design	OCR ICT Level 3	CCLD	Religious Studies	Business Studies
	Theatre Studies	Music	History	Textiles	Nutrition
	German	Sociology	Art	Welsh	Psychology
	Psychology	English	Maths Mech	Biology	Eng Lit
	Geography	Chemistry	PE	Applied Science	Physics
	Maths Statistics		Btec. Sport	IT	French
	<b>CHOICE</b>	<b>CHOICE</b>	<b>CHOICE</b>	<b>CHOICE</b>	<b>CHOICE</b>
.....	.....	.....	.....	.....	
<i>If in any of the option columns there are two subjects you are keen to study, please indicate below:</i>					
Option Column ..... Second Subject .....			Option Column ... Second Subject .....		
<i>If you <b>do not</b> intend to return to Llantwit Sixth form please clarify:</i>	<i>Attend other school</i>	<i>Seek Employment</i>	<i>Further education</i>	<i>Other</i>	<i>Unsure</i>



## Organise and participate in the Welsh Baccalaureate Christmas Fayre



Study a range of options at AS and A level

## Celebrate Exam Results and Student Awards



Be part of a Sixth Form Leadership Team



Take part in Charity and Enterprise



Experience Field Trips and Visits





## Subject Index

Art and Design.....	12
Business Studies.....	13
Design Technology - Product Design .....	14
Design Technology -Nutrition .....	16
Design Technology -Textiles .....	17
Design Technology- BTEC National Award in Child Care Learning and Development .....	19
Drama - Theatre Studies.....	21
English Literature and Language .....	22
English Literature.....	23
Geography .....	24
History.....	25
Information and Communication Technology A Level .....	26
ICT Level 3 OCR National Certificate .....	28
Mathematics with Mechanics Mathematics with Statistics Further Mathematics .....	30
Modern Foreign Languages .....	32
Music.....	34
PE A Level.....	36
PE BTEC Sport .....	37
Psychology .....	38
Religious Studies .....	39
Science - Applied .....	40
Science - Biology.....	41
Science - Chemistry .....	42
Science - Physics.....	43
Sociology .....	44



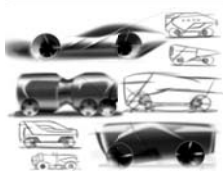
## Art and Design

Which Teacher is in charge of the course?	Mr S Thomas
Qualification and Exam Board	A/S Level Art and Design A Level Art and Design WJEC
Subject Knowledge and Skills Covered	The GCE in Art and Design has been designed to encourage an adventurous and enquiring approach to the subject. Fine art, mixed media, painting, photography and print making.
Assessment format	<p>AS Unit 1 Coursework Portfolio: September - 1st February Deadline. Weighting: 30% of total A Level mark. Candidates will explore key aspects of fine art focussing on drawing, painting and artist led research. Students should produce in depth sketchbook work and a collection of studies in a portfolio format which exemplifies work carried out during the AS course.</p> <p>Unit 2 Externally Set Assignment (Exam) February - May Weighting: 20% of total A Level mark/ Supervised Time - 8 hours. Candidates select one of 14 starting points set by exam board. The externally set assignment will last from 1st February until the deadline for receipt of marks in early May.</p> <p>A2 Unit 3 Coursework Personal Investigation 1st February Deadline. Weighting: 30% of total A Level mark. Candidates are required to build upon the knowledge, understanding and skills gained in the AS with greater depth of study. Candidates are required to develop their own artistic investigation based on an idea, issue or technique with evaluative sketchbook notes essential.</p> <p>Unit 4 - Externally Set Assignment (Exam) February - May Weighting: 20% of total A Level mark/Supervised Time - 12 hours. An externally-set assignment. Separate question papers for each endorsement containing 14 exciting starting points. Candidates choose one. The examination period is 12 hours. Set by WJEC, marked by the centre and moderated by WJEC.</p>
What qualifications do I need to start the course?	Normal entry will be by gaining an A* - C grade in Art at GCSE. All students will be expected to have a real interest in the subject.
How can I use this course after Year 13?	AS/A Level Art and Design will prepare you for a Foundation Course in Art which can lead to a Degree Course in a variety of areas including:  3D Design      Graphic Design      Multimedia Photography      Fashion Architecture      Fine Art
What else do I need to know?	For more information talk to your Art teacher or see the WJEC website - <a href="http://www.wjec.org.uk">http://www.wjec.org.uk</a>



## Business Studies

Which Teacher is in charge of the course?	Mrs L Gallo
Qualification and Exam Board	AQA AS and A Level Business Studies
Subject Knowledge and Skills Covered	The overall aim of the course is to help you understand the internal functions of contemporary business organisations and develop skills which will give you the ability to manipulate data, present arguments, problem-solving and planning work.
Assessment format	AS Modules:  Planning and Financing a Business Managing a Business A2 Modules: Strategies for Success The Business Environment & Managing Change
What qualifications do I need to start the course?	This stimulating and rewarding course will appeal to you whether you have studied Business Studies before or are interested in the challenge of a new subject. Many students who have not studied Business before have been very successful and their interest and hard work has helped them to achieve the qualification.
How can I use this course after Year 13?	It is ideal preparation for further study of Business or Management at degree level.
What else do I need to know?	At least a grade C in Maths and English would be desirable for students studying this course.



## Design Technology - Product Design

Which Teacher is in charge of the course?	Mr A E Stephens
Qualification and Exam Board	WJEC Product Design at AS and A Level
Subject Knowledge and Skills Covered	<p>Both the AS and A Level in DT Product Design are essentially Design and Make programmes creating a unique opportunity in the curriculum for students to use the design process to identify and solve real problems by designing and making products.</p> <p>As a subject Design Technology can provide a strong evidence base for the six Key Skills as an inherent part of the subject study. The Sixth Form courses promote progression by providing a range of usable skills. Through the key skills of problem solving, use of IT and communication candidates are able to work in a wide range of contexts demonstrating achievement in a range of materials and processes. Students can relate their studies to personal interests and or future intended careers.</p> <p>The design and problem solving approach of DT and related knowledge, understanding and skills may enhance the study of Art, Electronics, IT/Computing or Physics.</p> <p>The DT course is about the application of skills, knowledge and understanding. The content is delivered mainly in a practical way to enable students to experience and build their own technological knowledge and be able to draw on it in practical and theoretical solutions. Exercising initiative, imagination and resourcefulness are key issues in students developing their design and knowledge. Through identifying needs pupils realise they have a part to play in meeting these needs through responsible design.</p> <p>Pupils will be able to refine their ability to translate 2D ideas into well manufactured 3D outcomes using traditional and CAD/CAM approaches. Designing and manufacturing should help students to see the relationship between Designer, Manufacturer and User, to develop a greater perception of DT in the world we live.</p>
Assessment format	<p>AS Level</p> <p>DT1 20% 2 hours Product Design Exam Paper Section A questions require short answers: Section B requires open-ended essay responses. This component is externally assessed by the WJEC.</p> <p>DT2 30% (approximately 60 hours) Design and Make Task This component is marked by the centre and moderated by the WJEC.</p> <p>A Level</p> <p>DT3 Exam Paper 20% 2½ hours Section A questions require short answers specifically addressing the A</p>


	<p>subject content.</p> <p>Section B questions require short answers covering the whole subject content.</p> <p>Section C requires open-ended essay type responses. This component is externally assessed by the WJEC.</p> <p>DT4 30% (approximately 60 hours)</p> <p>Major Project</p> <p>This component is marked by the centre and moderated by the WJEC.</p>
What qualifications do I need to start the course?	<p>Preferable to have a GCSE in either:</p> <p>DT Systems &amp; Control; Graphics; Product Design; Textiles or Resistant Materials.</p> <p>Grade B or above.</p>
How can I use this course after Year 13?	<p>Primarily solving problems is a major part of day to day life so the technique of finding answers to practical problems is a useful life skill combining a range of transferable skills such as literacy, numeracy, working with others and graphical communication. Careers in design are many and varied. The course can be used to gain entry to foundation courses, BTec, HND and Degree courses. Typical careers could include:</p> <p>Product/ Furniture/ Industrial/ Jewellery Design</p> <p>Interior Design/ Landscape Architect</p> <p>Graphic Design/ Illustration/ Animation/ Advertising</p> <p>Architecture/ CAD Draughtsperson</p> <p>Model Making</p> <p>Automotive/ Aeronautical / Civil/ Structural or Mechanical Engineering</p> <p>Television and Theatre Design</p> <p>Multi Media Designer</p>
What else do I need to know?	<p>Department encourages involvement in several competitions. We encourage students to actively seek the assistance of local experts in execution of Major Project. Local businesses have in the past been very involved and supportive of pupils.</p>





## Home Economics -Nutrition

Which Teacher is in charge of the course?	Miss R Newbrook
Qualification and Exam Board	AS/A level GCE Home Economics Food, Nutrition and Health OCR Examination Board
Subject Knowledge and Skills Covered	<p>This interesting course will give you extensive knowledge of food and up to date nutritional issues. You will enjoy the opportunity to combine theoretical knowledge with practical work to produce practical and investigative work to a high standard.</p> <p>The specification for the examination covers the following areas of study:</p> <p>Society and Health: Demography, family and society, key issues for society, environmental and social issues and Health.</p> <p>Resource management: Resources, food provision, selection and purchase of household goods, food preparation and cooking equipment and food safety and hygiene.</p> <p>Introduction to Nutrition Nutrients and energy Nutritional needs and diets of different groups Properties of food Design, development and production of new food products Developments in the food industry</p>
Assessment format	<p>AS Level involves: 2 Mandatory units 50% Society and health Resource Management</p> <p>A Level involves: 2 Mandatory units Investigative study</p>
What qualifications do I need to start the course?	This stimulating and rewarding course will appeal to you if you have studied Food at GCSE Level, although it is not essential to have done so in order to join the course. Many students find a food link with Sports Science and Biology.
How can I use this course after Year 13?	This course could lead to relevant careers related to an improvement to the quality of life and provide a basis for further study. Possible careers could include food science, dietetics, teaching, health education, food journalism, management within the retail industry, food technology, consumerism etc.
What else do I need to know?	This course will be of value and interest to students whose principle interests are food and nutrition.

	<h2>Home Economics -Textiles</h2>
<p>Which Teacher is in charge of the course?</p>	<p>Mrs C Griffiths</p>
<p>Qualification and Exam Board</p>	<p>Design and Technology - Textiles Product Design AQA</p>
<p>Subject Knowledge and Skills Covered</p>	<p>This specification has been designed to encourage you to take a broad view of design and technology, to develop your capacity to design and make products and to appreciate the complex relations between design, materials, manufacture and marketing.</p> <p>It encourages you to develop your critical thinking while involving yourself in problem solving activities that will help you to understand the relationships between designer, manufacturer and user.</p> <p>You will use practical and theoretical skills that will provide you with a comprehensive study of fashion and textiles.</p> <p>The course enables you to develop your knowledge and understanding of materials, components and creative skills, to integrate areas of fashion and technology, and to develop an understanding of their application to modern society.</p>
<p>Assessment format</p>	<p>AS Level involves:</p> <p>Unit 1 -An examination paper of 2 hours duration covering Materials, Components and Application (50% of AS)</p> <p>Unit 2 - Coursework - Learning Through Designing and Making which may take a number of forms: a single design and make project, two smaller projects and/or a portfolio of work (50% of AS)</p> <p>A Level involves:</p> <p>Unit 3 - An examination paper of 2 hours duration covering Design and Manufacture (25% of A Level)</p> <p>Unit 4 - Design and Making Practice, you are expected to submit evidence of a single, substantial designing and making activity (25% of A Level)</p>
<p>What qualifications do I need to start the course?</p>	<p>This stimulating and rewarding course will appeal to you if you have studied Textile Technology at GCSE Level, although it is not essential to have done so in order to join the course.</p> <p>Many such students have been successful in previous years and their interest and hard work has helped them through to achieve the qualification. Sometimes they choose this because they had regretted not doing so at GCSE.</p> <p>However, you will be expected to be prepared to put in the extra effort to gain the knowledge and understanding achieved in Textiles Technology at GCSE.</p>


How can I use this course after Year 13?	<p>This could lead to careers in fashion, textiles and design, e.g. fashion buying and forecasting, fashion promotion, fashion and textiles design, interior design, theatre/costume design, retail and marketing management, teaching etc.</p> <p>Previous students have continued to study textiles and fashion at University. Recently, one of our students graduated from the London College of Fashion. The College of Music and Drama at Cardiff and its stage costume degree has proved popular. Other recent students are enjoying a Fashion degree course at Newport and the Fashion Retail Management Degree at Birmingham City University.</p>
What else do I need to know?	<p>If you wish to develop your interest and ability in fashion and textiles design, this is the course for you. This will allow you freedom to be creative and innovative while making sure that you satisfy the assessment criteria for the specification.</p>



## Home Economics- BTec National Award in Child Care Learning and Development

Which Teacher is in charge of the course?	Mrs C Griffiths
Qualification and Exam Board	BTec National Award in Child Care Learning and Development Level 3. Examination board - Edexcel
Subject Knowledge and Skills Covered	<p>The subject gives you the chance to explore 5 key units. 3 of which will be studied in Year 12 and 2 in Year 13. These are:</p> <p>Unit 1: Positive relationships for children's care, learning and development  Unit 2: Positive environments for children's care, learning and development  Unit 3: Promoting children's development. (Double unit)  Unit 38: Reflecting on practise  Unit 5: Safeguarding children.</p> <p>All the above units give you the chance to understand more about early years work and care of children.</p>
Assessment format	<p>You will be given tasks called assignments that will test your understanding of the content of each unit. There are no examinations, but each assignment work must show evidence of your learning. The evidence that you produce must match the criteria for the assessment for the unit.</p> <p>Your work will be graded according to a three-point grading scale of pass, merit and distinction.</p> <p>The National Award in Child Care Learning and Development is equivalent to an A Level, and the grade obtained will be determined by the level you achieve, i.e.:</p> <p>Distinction = A at A Level  Merit = C at A Level  Pass = E at A Level.</p>
What qualifications do I need to start the course?	<p>You need to be reliable and have a mature attitude to the course. You must have a willingness to work hard and to meet deadlines during the course because remember there are no exams! Whether you gain a pass, merit or distinction will depend on your ability to produce your assignment evidence on time!</p> <p>A record of good attendance and attitude.  Child Development GCSE would be a bonus.</p>

How can I use this course after Year 13?	This course is an excellent foundation on which to build further study in Child Psychology, Nursing, Early Years, teaching or Midwifery.
What else do I need to know?	<p>This course is studied over 2 years and therefore you need to commit for two years in order to achieve the qualification. There is no award after one year.</p> <p>You will be taught by a team of teachers delivering different aspects of the course.</p> <p>You will need access to a Child Care setting in the first and second year in order to cover certain aspects of Unit 2 and all of unit 4. This will be arranged as work experience. You will be responsible for organising this placement.</p>

	<h2 style="text-align: center;">Drama - Theatre Studies</h2>
Which Teacher is in charge of the course?	Mrs N Richards
Qualification and Exam Board	AS/A Level Drama & Theatre Studies Edexcel
Subject Knowledge and Skills Covered	Year 12 Unit 1: Exploration of Drama and Theatre Unit 2: Theatre text in Performance Unit 3: Exploration of Dramatic performance Unit 4: Theatre Text in Context
Assessment format	Unit 1: Practical Exploration and Exploration Notes (3000 words) Unit 2: Externally assessed performance examination. Performance with a group and a performance of monologue/duologue. Unit 3: Internally assessed research and development plus written evaluation. Unit 4: Written paper assessing knowledge of two texts studied and an evaluation of live theatre.
What qualifications do I need to start the course?	It is useful to have studied GCSE Drama but many students choose AS Drama and Theatre Studies who have not studied Drama before. These students have usually participated in the School production or a show outside of School (again, this not essential).
How can I use this course after Year 13?	Not everyone aspires to be or is going to be an actor. However, this is the age of the 'presentation' where products and ideas are sold in a competitive market on the basis of how well the presenter can vouch for his/her point of view. No-one is exempt from the need to be able to communicate with each other. The scientist, the businessman, the engineer, the bank manager, the shop assistant, the hairdresser all require the skills that Drama can offer. Interviews require confidence and assertiveness, an ability to speak at ease and with audibility and relaxed appropriate body language. Therefore, ALL professions will benefit from completing a Drama course. However, there is a regular turnover of students accepted to top Drama colleges from Llantwit Major school and many already working in the Performing Arts Industry. A level Drama and Theatre studies goes well with a number of other courses such as History, Music, RS, Psychology, Sociology, Media and English.
What else do I need to know?	The course is mainly practical based and most lessons do not involve written work. Completing tasks by deadlines is an integral part and all students are expected to be committed as all practical work is completed as a group. There is no written exam as part of the AS course but examination will take place continuously throughout lessons - excellent attendance is vital.



## English Literature and Language

Which Teacher is in charge of the course?	Miss C Howe
Qualification and Exam Board	WJEC AS and A Level English Literature and Language
Subject Knowledge and Skills Covered	<p>At AS Level you will:</p> <p>Analyse poetry from early modern English to 1900 and modern prose (<i>The Time Traveller's Wife</i> and H.G. Wells' <i>The Time Machine</i>).</p> <p>Write a literary piece (e.g. short story) and a non-literary piece (e.g. magazine article.) You will then write a commentary on your own work.</p> <p>At A Level you will:</p> <p>Analyse modern drama and compare this to a Shakespeare play.</p> <p>Produce your own performance texts (e.g. stand up comedy routine)</p> <p>Compare unseen texts from different genres and periods.</p> <p>Skills developed include:</p> <p>Analytical skills</p> <p>Understanding of literary genres and periods</p> <p>Communication and debating skills.</p> <p>Creative Writing Skills</p>
Assessment format	Exams (modular) and coursework.
What qualifications do I need to start the course?	Essential: At least a C in English and English Literature at GCSE
How can I use this course after Year 13?	You could use this A level for: English Literature, Linguistics, Business, Media, Journalism, Teaching, Drama, Social Science, Law and Creative Writing courses
What else do I need to know?	If you can't decide between English Literature or English Literature and Language, then think about the elements of your GCSE course you particularly enjoyed. For example, if you enjoyed the oral and creative writing units, then English Literature/Language is probably for you. If you enjoyed studying novels, plays and poetry and writing about them, then opt for English Literature. If in doubt, ask your teacher!





## English Literature

Which Teacher is in charge of the course?	Miss C Howe
Qualification and Exam Board	WJEC AS and A Level English Literature
Subject Knowledge and Skills Covered	<p>At AS Level you will:</p> <p>Study modern poetry and modern drama (post 1900)</p> <p>Write a literary piece in a literary genre of your choice e.g. science fiction, gothic or travel writing and write a commentary on it, explaining the choices you made.</p> <p>Study and compare two prose texts.</p> <p>For A Level English Literature you will:</p> <p>Compare texts from different periods and genres.</p> <p>Study Shakespeare and related drama and medieval poetry.</p> <p>Skills developed include:</p> <p>Analytical skills</p> <p>Ability to discuss different viewpoints</p> <p>Understanding of literary genres and periods</p> <p>Ability to write a strong literary argument</p> <p>Communication and debating skills.</p>
Assessment format	Exams (modular) and coursework.
What qualifications do I need to start the course?	Essential: C or above in English and English Literature.
How can I use this course after Year 13?	You could use this A level for: English Literature, Business, Media, Journalism, Teaching, Drama, Social Science, Law and Creative Writing courses
What else do I need to know?	The English Department aim to take students on theatre trips and visit universities for outside lectures. English literature is not just about studying books. It also encompasses history, media, philosophy, cultural changes and psychology as all these things have an influence on the literature we study.



## Geography

Which Teacher is in charge of the course?	Mrs J Jones
Qualification and Exam Board	The course that you will be following is the Edexcel Geography AS/A2.
Subject Knowledge and Skills Covered	<p>The topics that you will study are:</p> <p>AS</p> <p>World at Risk (hazards, climate change)</p> <p>Going Global (people, globalisation, population, world cities)</p> <p>Unequal Spaces</p> <p>Rebranding Places</p> <p>Fieldwork- a three day residential course at Dale Fort- Pembrokeshire- including studies on coastal conflicts and rebranding places.</p> <p>A2</p> <p>Energy Security</p> <p>Water Conflicts</p> <p>Biodiversity under Threat</p> <p>Superpower geographies</p> <p>Bridging the Development gap?</p> <p>The technological fix?</p> <p>Fieldwork.</p>
Assessment format	<p>The scheme of assessment is in two parts. Two units make up the Advanced Subsidiary (AS) assessment, and a further two A2 units make up the four units required for Advanced GCE assessment.</p> <p>Geographical research and skills will be assessed via examination.</p>
What qualifications do I need to start the course?	<p>The specification provides a balanced geographical education which builds on, but is not dependent on, prior knowledge of the subject at GCSE level. A minimum of a grade C at GCSE Geography would otherwise be required.</p>
How can I use this course after Year 13?	<p>The skills you use in your geographical studies make you of potential interest to a range of employers. The close link between the subject and the world around us makes for a varied list of related careers, e.g. working with the development or aid agencies, environmental work and tourism and leisure.</p> <p>Statistics show that compared with other subjects, Geographers are among the most employable. Many of those leaving University with a Geography Degree enter three areas of employment: administration and management; marketing or financial work. This is because Geographers possess the abilities and skills that employers look for.</p>
What else do I need to know?	<p>All students are expected to attend a three day residential course at the end of the Easter term of the AS course. This takes place at the Dale Fort field study centre in Pembrokeshire, where tuition is provided in all aspects of geographical fieldwork and techniques.</p>



## History

Which Teacher is in charge of the course?	Dr J M Alter
Qualification and Exam Board	GCE A Level and AS Level - WJEC examination board.
Subject Knowledge and Skills Covered	<p>AS WJEC specification covers the following modules: A Period study on Wales and England c1880-1939 and an In-depth study on Nazi Germany c1933-1945.</p> <p>A Level is focussed on: Historical Investigation coursework based on Nazi Germany c1933 - 1945 and topics and themes relating to the history of both the chosen Wales and England c1940-1980 and the chosen in-depth study.</p> <p>As you acquire and understand historical knowledge, you will learn to employ a range of historical skills (e.g. evaluation of sources) and you will gain expertise in transferable skills like research, evaluating and forming arguments, gathering information as well as presentational skills. The study of history will stimulate a genuine interest in the past and lay the foundations for what may become a lasting and absorbing leisure pursuit in adult life.</p>
Assessment format	There are two examinations at AS Level. Each of the modules will be examined. At A2 Level there will be one paper and course work.
What qualifications do I need to start the course?	You must possess a GCSE in History A* - C, or we would consider you if you possessed the equivalent qualification in English or a humanities subject.
How can I use this course after Year 13?	The course provides you with a basis for applications to many Higher Education courses. You are also trained in skills that would be of great benefit in such areas as: Law, Education, Research Work, Archive Work, Archaeology, Treasure Hunter, Museum Service, Personnel, Administration as well as Management in the Civil Service, Local Government and Business.
What else do I need to know?	GCE History shows that you have a high level of literacy and that you are able to analyse complex information, make judgements based on facts and assess various view points and theories. These skills are highly valued by both colleges and employers. Moreover, they are invaluable in life as we make decisions and sift through the myriad of information, news and hype that the media and other sources bombard us with. History also gives us a sense of perspective and development- 'He who ignores History has no past and no future!'



## Information and Communication Technology A Level

Which Teacher is in charge of the course?	Mr M J Bell
Qualification and Exam Board	WJEC Advanced GCE in Information and Communication Technology
Subject Knowledge and Skills Covered	<p><b>The aim of the course is that the student should develop:</b>  the capacity for thinking creatively, innovatively, analytically, logically and critically;  skills to work collaboratively;  the ability to apply skills, knowledge and understanding of ICT in a range of contexts to solve problems;  an understanding of the consequences of ICT on individuals, organisations and society and of social, legal, ethical and other considerations on the use of ICT;  an awareness of emerging technologies and an appreciation of the potential impact these may have on individuals, organisations and society.</p> <p><b>Areas studied typically include:</b>  Information systems, Data, information and knowledge  Uses of ICT in Business, Education, Health Care and at Home  Communications, Networks, Network management and the Internet  Relational Databases and Management Information Systems  System Development Life Cycle  Word processing / DTP, Spreadsheets, Presentation, Databases, Web authoring and Multimedia</p>
Assessment format	<p><b>AS (2 units)</b>  IT1 30% 2 hours 15 minutes Written Paper 80 marks (120 UMS)  A written paper of two sections, A (theory) and B (Spreadsheets)  IT2 20% Internal Assessment 80 marks (80 UMS)  Candidates undertake DTP and multimedia tasks, presenting the outcome for internal assessment and moderation by WJEC.</p> <p><b>A Level (the above plus a further 2 units)</b>  IT3 30% 2 hours 30 minutes Written Paper 90 marks (120 UMS)  A written paper of two sections, A and B, presented as a question paper  IT4 20% Internal Assessment 100 marks (80 UMS)  Candidates analyse, design, implement, test and evaluate a solution to a problem of their choice requiring the use of a relational database. This is a substantial piece of work, undertaken over an extended period of time. It is internally assessed and moderated by WJEC.</p>

<p>What qualifications do I need to start the course?</p>	<p>To study ICT at AS or Advanced GCE you need have no formal qualification in the subject, but if you have a GCSE (or equivalent qualification) in Information Technology you will find that the AS/Advanced GCE course in ICT will build on some of the knowledge and skills you have already developed.</p> <p>The most important factor is that you have an interest in, and are enthusiastic about, ICT.</p>
<p>How can I use this course after Year 13?</p>	<p>After you have completed your AS or Advanced GCE course in ICT you may choose to seek employment in the ever-growing computing-related industries, or continue your study full time at a higher education institution.</p>
<p>What else do I need to know?</p>	<p>Computers are now widely used in all aspects of government, business, industry, education, leisure and the home. In this increasingly technological age a study of ICT, and particularly how computers are used in the solution of a variety of problems, is not only valuable to the students themselves for their future careers but is also essential to the future well being of the country.</p>

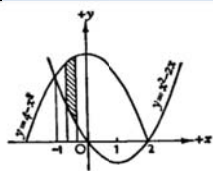


## ICT Level 3 OCR National Certificate

Which Teacher is in charge of the course?	Mr M J Bell	
Qualification and Exam Board	OCR Nationals in ICT Level 3: National Certificate - equivalent to 1 A level.  The OCR Nationals in ICT Level 3 offer students a more in-depth look at ICT in the modern workplace, and give an insight into its role in specialist careers. The qualifications provide ongoing learning and assessment of the practical skills and knowledge required to succeed in ICT-related careers.	
Subject Knowledge and Skills Covered	Students take mandatory units 1 to 4	
	Unit 1 - Digital Business Communication  Students develop a thorough knowledge and understanding of communication in a business context, and learn how to use ICT in effective business communications. Document and computer security in the workplace, the role and contribution of communication technology to business and the application of a presentation style to document creation are just three of the skills covered here.	Unit 2 - Collaborative Working  By successfully completing this unit, students will have gained a thorough knowledge and understanding of collaboration as an essential skill in working towards a final product in ICT related projects. Skills covered include: planning as part of a group, investigating the use of ICT tools to support collaborative working and carrying out research for a group project.
	Unit 3 - Problem Solving  Students develop skills and knowledge which enable them to use various techniques to analyse and interpret numerical data. Some of the key skills taught here are defining statistical problems, collecting data, using spreadsheets to store and analyse data and methods of data presentation.	Unit 4 - Creating a Digital Showcase  This unit teaches the skills required to develop an interactive media product to showcase an event or situation. As part of successfully completing this unit, students will be able to demonstrate how to specify requirements, design solutions and author an interactive media product.
	and 2 optional units such as Unit 5 - Advanced Spreadsheets Unit 6 - Advanced Databases Unit 10 - Digital Imaging Photography Unit 11 - Digital Video Unit 12 - Digital Audio Unit 14 - Cartooning and Animation Unit 16 - Programming for Computer Games Unit 17 - Computer Games Production Unit 18 - Computer Games Technology Unit 20 - Web Authoring Unit 22 - Databases for e-Commerce Unit 25 - Scripting and Coding for Websites	

Assessment format	All units are internally assessed, and then externally moderated by an OCR Visiting Moderator. There are no external tests or exams, and ongoing assessments and moderations can take place at any. All individual units are graded as Pass, Merit or Distinction.
What qualifications do I need to start the course?	To study OCR Nationals in ICT Level 3 you need no formal qualification in the subject, but if you have an OCR Nationals in ICT Level 2 you will find that the course will build on some of the knowledge and skills you have already developed. The most important factor is that you have an interest in, and are enthusiastic about the subject.
How can I use this course after Year 13?	After you have completed your National Certificate you may choose to seek employment in the ever-growing computing-related industries, or continue your study full time at a higher education institution.
What else do I need to know?	Computers are now widely used in all aspects of government, business, industry, education, leisure and the home. In this increasingly technological age a study of ICT, and particularly how computers are used in the solution of a variety of problems, is not only valuable to the students themselves but also essential to the future well being of the country. It is recognised that ICT has a great deal to offer. It integrates well with subjects across the curriculum. It demands both logical discipline and imaginative creativity; it encourages an awareness of the management and organisation of computer systems; it extends the students' horizons beyond the school or college environment in the appreciation of the effects of computer applications on society and individuals. For these reasons, it is as relevant to a student studying Arts subjects, as it is to one studying Science subjects.





## Mathematics with Mechanics

## Mathematics with Statistics

## Further Mathematics

Which Teacher is in charge of the course?	Mrs M Martin
Qualification and Exam Board	WJEC AS Mathematics A Level Mathematics A Level Further Mathematics.
Subject Knowledge and Skills Covered	<p><b>AS Level - Year 12</b></p> <p>C1 - Co-ordinate geometry, quadratic functions and their graphs, curve sketching, Algebra - factor theorem and remainder theorem. Surds. We start calculus!</p> <p>C2 - Sequences, Arithmetic and Geometric series, laws of logarithms, solving trigonometric equations. Circles and their theorems. Integration.</p> <p>M1 - Motion under uniform acceleration, equilibrium of a system of forces, finding the resultant force, momentum and impulse, Newton's laws of motion. Friction and its properties. Centres of Mass. or S1 - Probability laws, conditional probability, expectation and variance of discrete and continuous random variables, the binomial distribution, Poisson distribution.</p> <p>All these modules are built on in Year 13.</p> <p><b>A Level - Year 13</b></p> <p>C3, C4, M2 or S2 or M1/S1</p> <p>C3 - Functions, Differentiation involving the quotient and product rules, Integration, Iteration, Simpson's rule; The modulus, exponential and logarithmic functions and their graphs. Further trigonometric functions, Transformations of functions.</p> <p>C4 - Differential equations. Integration by parts; by partial fractions and by substitution. Vectors. Harmonic functions. Integration and differentiation of further trigonometric functions. Expansions and approximations using expansions. Volumes of solids of revolution.</p> <p>M2 - Hooke's law. Differential equations. Energy. Power and Work. Constant and variable forces. Circular motion.</p> <p>S2 - Hypothesis testing. Normal and rectangular distributions. Distributions of two independent events.</p>

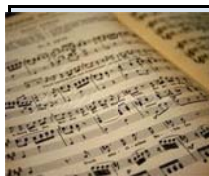
Assessment format	<p>In Year 12 you will do modules C1, C2 and M1 (Mechanics) Or C1, C2 and S1 (Statistics).</p> <p>In Year 13 you will do modules C3, C4 and M2 (Mechanics) Or C3, C4 and S2 (Statistics).</p> <p>Also there is an opportunity to do the M1 paper instead of the S2 paper and S1 instead of the M2.</p> <p>If you choose to do Further Mathematics then you will take 12 modules in total over the two years: C1, C2, C3, C4, M1, M2, S1, S2, FP1, FP2, FP3 and either M3 or S3. You will also have to opt for both mathematics columns in year 12.</p>
What qualifications do I need to start the course?	<p>You will have done the Higher tier course at GCSE and obtained at least a B grade.</p>
How can I use this course after Year 13?	<p>Maths with Mechanics is useful for further studies in Physics, Engineering courses or Architecture.</p> <p>Maths with Statistics is useful for further studies in Geography, Medicine, Sports Science, Biology or Psychology courses.</p> <p>It is advisable that if you want to take Maths at University then you should do the Maths and Further Maths A Levels.</p> <p>An A Level in Maths impresses all employers and opens up job opportunities in various professions. For example: banking, insurance, accountancy, industry, engineering, the RAF.</p> <p>With a Degree in Maths the world is your oyster ... and there is always teaching!</p>
What else do I need to know?	<p>Maths is hard work, but quite satisfying when you have solved a problem.</p> <p>When you have a solution you have completed the question - with other subjects you can always add more to an essay or do further reading!</p> <p>Come and talk to any member of the Maths Department for further information.</p>



## Modern Foreign Languages

Which Teacher is in charge of the course?	Ms M Scantlebury
Qualification and Exam Board	WJEC A level French WJEC A level German
Subject Knowledge and Skills Covered	<p>Through the study of AS and A2 French and German you will be able to:</p> <ul style="list-style-type: none"> <li>Develop an interest in and enthusiasm for language learning</li> <li>Develop understanding of the language in a variety of contexts and genres</li> <li>Communicate effectively, confidently and clearly in the language for a range of purposes</li> <li>Develop awareness and understanding of the contemporary society, cultural background and heritage of countries where the language is spoken</li> </ul> <p>You will be encouraged to:</p> <ul style="list-style-type: none"> <li>Derive enjoyment and benefit from language learning</li> <li>Acquire knowledge, skills and understanding for practical use, further study and/or employment</li> <li>Communicate with speakers of the language</li> <li>Take your place in a multilingual global society</li> </ul> <p>AS Level: You will find French and German at AS Level quite different from what you have studied before. You will focus primarily on acquiring the grammatical and linguistic skills necessary for effective communication in the foreign language.</p> <p>You will learn and use your grammar through a range of topic areas, including:</p> <ul style="list-style-type: none"> <li>Travel and Tourism, Sport, Hobbies and Entertainment, Customs and Traditions, Healthy / Unhealthy Living, Education, Relationships and Responsibilities, Gender Issues, Youth Culture</li> </ul> <p>A2: In Year 13 you will consolidate and improve upon the grammar skills you have acquired in Year 12. You will also explore a variety of topic areas, including:</p> <ul style="list-style-type: none"> <li>Environmental Issues, encompassing: <ul style="list-style-type: none"> <li>Pollution, Global Warming, Transport and Energy, Nuclear Energy Conservation, Recycling,</li> </ul> </li> <li>Social and Political Issues, involving: <ul style="list-style-type: none"> <li>Media, Racism and Immigration, Terrorism, Work and Unemployment</li> </ul> </li> </ul> <p>Part of the A2 course also involves choosing one or two of the following options:</p> <ul style="list-style-type: none"> <li>The World of Cinema</li> <li>The World of Literature</li> <li>The Regions of France / Germany.</li> </ul>
Assessment	You will be assessed in the summer term of Year 12 by two

format	<p>examinations:</p> <p>Oral Examination: This will be a 15 minute exam in the foreign language involving discussion of topics studied during the AS year. Time will also be spent on general conversation, where you will be able to talk about yourselves, your interests and studies and aspirations and ambitions for the future.</p> <p>Listening, Reading and Writing: This will be a 2½ hour exam, whereby you are tested on these three skills. It will involve Listening and Reading activities in the foreign language, along with some grammar tasks and an essay on one of the topic areas studied.</p> <p>You will be assessed in the summer term of Year 13 by two examinations:</p> <p>Oral Examination: This will be conducted by a visiting examiner. You will take part in a structured discussion, again involving topics you will have studied. You will also give an oral “expose” (a presentation) on one of the areas in the Guided Studies Option. This will also be discussed.</p> <p>Listening, Reading and Writing: This is a 3 hour examination, where again these three skill areas will be tested. You will complete various Listening and Reading activities, along with a translation into the foreign language and an essay from the Guided Studies Option.</p> <p>Guided Studies</p>
What qualifications do I need to start the course?	A good pass at ‘C’ grade or above GCSE French or German
How can I use this course after Year 13?	The study of a foreign language opens up a host of possibilities in later life. You can of course choose to study French or German at University or perhaps study a new language altogether. Most Universities in fact view the study of a language at A Level as advantageous for many degree courses. As far as jobs are concerned, in today’s global climate, a foreign language could open doors into a variety of professions, ranging from business and law to travel, translating and maybe even teaching! Perhaps the most exciting opportunities, however, lie in living and working in the countries where the target languages are spoken.
What else do I need to know?	The study of a modern language at A Level requires dedication and commitment. It involves you taking responsibility for your own learning and revising independently the grammar and vocabulary that you are taught. As communication is the key, you are encouraged at all times to speak in the foreign language, whether it is in the lessons or in time spent with the Foreign Language Assistant. Don’t be afraid of making mistakes! It’s part of the learning process. Speak and practise whenever and wherever you can!



## Music

Which Teacher is in charge of the course?	Miss E Brown
Qualification and Exam Board	A Level Music AQA
Subject Knowledge and Skills Covered	<p>You will study six modules.</p> <p>AS Level</p> <p>MUSC1 Influences on Music 30% You will look at the development of musical styles. You study one set work and then an Area of Study of your choice taken from one of the following three: Choral Music in the Baroque period Music Theatre from 1940-1980 British Popular Music from 1960 to the Present Day</p> <p>MUSC2 Composing: Creating Musical Ideas 30% You will be encouraged to develop your own style in composing. You may compose in any style you wish from classical to rock, pop and jazz. This is a Controlled Time task and you choose one of the following options: Compositional techniques Free Composition Arranging</p> <p>MUSC3: Interpreting Musical Ideas 40% You select two options from a choice of 6 including individual performance, group performance and technology-based performance.</p> <p>A2</p> <p>MUSC4: Music in Context You continue to explore musical styles by study of another set work. You also choose an Area of Study based on Choral Music, Chamber Music or Jazz.</p> <p>MUSC5: Composing- Developing Musical Ideas You complete another Controlled Time task from Compositional Techniques, Free Composition or Arranging.</p> <p>MUSC6: Performing: A Musical Performance You prepare a number of pieces for one of three options: a) a solo performance of between 10-15 mins b) a technology-based performance c) a combination of the above two</p>


Assessment format	<p>Performing The Performances are recorded in school during the course and externally assessed.</p> <p>Composing The Controlled Time tasks are completed in school and externally assessed.</p> <p>Listening Both Listening modules are assessed by a Listening examination. The exam lasts for 1 ¾ hours at AS and 2 ¼ hours at A2. The written papers include a mix of listening questions and essays.</p>
What qualifications do I need to start the course?	GCSE Music is very helpful but not essential. However, you do need to have had experience of performing either as a soloist or as a member of a group.
How can I use this course after Year 13?	There are many career prospects for well-qualified musicians either as: performers/composers or as administrators, publishers, teachers, broadcasters, journalists and sound engineers. There are numerous courses available in Higher Education where Music / Music Technology may be studied to a higher level.
What else do I need to know?	<p>You can perform on any instrument including singing</p> <p>You can use ICT to help with your composition</p> <p>It is recommended that you have individual lessons in your chosen instrument/voice</p>

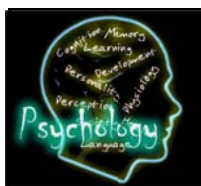


## PE A Level

Which Teacher is in charge of the course?	Mr K Francis
Qualification and Exam Board	OCR A Level Physical Education
Subject Knowledge and Skills Covered	<p>AS Modules:</p> <ul style="list-style-type: none"> <li>▶ Socio-Cultural studies</li> <li>▶ Anatomy and physiology</li> <li>▶ Skills acquisition</li> </ul> <p>A2 Modules:</p> <ul style="list-style-type: none"> <li>▶ Exercise and sport physiology</li> <li>▶ Historical studies in sport</li> <li>▶ Psychology of sport</li> </ul>
Assessment format	40% practical (2 practical options at AS, 1 at A2 and an evaluation of performance). 60% theory exams on the modules listed
What qualifications do I need to start the course?	GCSE PE is advisable although some exceptions have been made - see Mr Francis to discuss if you feel that you might be interested. You must be interested in sports issues and have a commitment to improving your own performance at School representative standard and above or be coaching or officiating to a level 2 standard.
How can I use this course after Year 13?	To follow a Degree in Sport or another subject; leisure work; sports development; sports coaching; fitness instruction.
What else do I need to know?	The A Level PE course has a very high reputation within the School. The pupils on the course become very involved in many aspects of the PE Department and in trips, events and courses to enhance their Curriculum Vitae.



	<h2>PE BTEC Sport</h2>
Which Teacher is in charge of the course?	Mr K Francis
Qualification and Exam Board	Edexcel Level 3 BTEC National Subsidiary Award in Sport
Subject Knowledge and Skills Covered	Units: 6 units of study which will include : <ul style="list-style-type: none"> <li>▶ Principles of Anatomy and Physiology in Sport (half a unit)</li> <li>▶ The Physiology of Fitness (half a unit)</li> <li>▶ Assessing Risk in Sport</li> <li>▶ Sports Development</li> <li>▶ Fitness Testing for Sport and Exercise</li> <li>▶ Fitness Training and Programming</li> <li>▶ Exercise Health and Lifestyle</li> </ul>
Assessment format	100% coursework One assignment for each topic area split up into smaller sections throughout the course. Pupils are able to attain a pass, merit or distinction which are respectively equivalent to an E, C or A at A Level.
What qualifications do I need to start the course?	GCSE PE or BTEC PE from Year 11 would be desirable, but if you have not taken these routes you are welcome to discuss your interest with Mr Francis. An interest in sport and exercise is essential. You should enjoy sport and be keen to find out more about the world of sport. You must be prepared to work independently and meet various deadlines.
How can I use this course after Year 13?	Sports development, Sport Leisure Industry - leisure assistant, Sports physiotherapy, PE teaching, Coaching sports, fitness instructor, or a different field of work. Either a job or further qualifications including a degree if that is what you would like to do next. If you take the opportunities you will be given on the course you will have a fantastic Curriculum Vitae which you could use to show any employer or course leader that you have worked as part of a team, have good leadership skills, are reliable, have developed communication skills, etc.
What else do I need to know?	The BTEC Sport course is a very varied and vocationally linked course. It suits candidates who have an interest in sport, and pupils who do not particularly like exams. It gives you a fresh opportunity to be involved in other aspects of sport if you are interested, but have never been a top performer yourself. It is also a different type of qualification for pupils who do not mind exams but prefer the structure of assignment based work that you can prepare and re-submit over the course, and still get the same University recognition as A Level students.



## Psychology

Which Teacher is in charge of the course?	Mrs. R. Brotherton
Qualification and Exam Board	AS and A2 Level Psychology (AQA)
Subject Knowledge and Skills Covered	<p>Topics studied at AS level are Human Memory, Attachment, Research Methods, Social Influence, Stress and Abnormality (mental disorders).</p> <p>Topics studied at A2 level are Aggression, Eating Behaviour, Relationships, Schizophrenia, Addiction and Research Methods.</p> <p>Students will develop their literacy, numeracy communication and problem-solving skills, as well as learning to design, evaluate and think critically about psychological research.</p>
Assessment format	100% examination.
What qualifications do I need to start the course?	<p>Essential</p> <p>GCSE English (C)</p> <p>GCSE Maths (C)</p> <p>GCSE Science (C)</p>
How can I use this course after Year 13?	The qualification is accepted at all universities. It will provide students with an excellent knowledge base for going on to study psychology at degree level and students will have learnt many transferable skills that they will be able to use in all college/ university courses and all careers.
What else do I need to know?	Excellent attendance will be necessary in order to succeed in psychology A-Level as it is not an 'easy option'.



## Religious Studies

Which Teacher is in charge of the course?	Mrs M A Williams
Qualification and Exam Board	AS Religious Studies WJEC
Subject Knowledge and Skills Covered	<p><u>Subject knowledge</u> Ethics - the theory of ethics and ethical issues e.g. natural law and sexual ethics Religion and Contemporary Society - medical ethics (euthanasia and animal rights), religion and the media, sociology of religion and psychology of religion</p> <p><u>Skills</u> To be able to think independently. To be able to present a balanced and reasoned argument To problem solve.</p>
Assessment format	There are two module examinations. If you do not achieve the grade you feel you want you can then re sit a paper.
What qualifications do I need to start the course?	It is possible to follow this course without having taken full course GCSE RS but it is strongly recommended that you have at least a Grade C in one of your English papers.
How can I use this course after Year 13?	Many people are surprised to find that Universities and employers hold a qualification in RS highly as it is a subject which requires analytical skills, a high level of thinking skills and problem solving techniques. It can be used as a base for a vast variety of courses and careers which would include medicine, teaching and law.
What else do I need to know?	The course is extremely interesting but you need to be the kind of young person who likes to ask questions and is not content with the obvious answer. You need to be interested in world events and want to discuss what is happening and why.



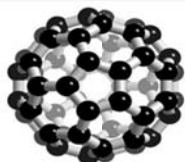
## Science - Applied

Which Teacher is in charge of the course?	Mrs P Birt
Qualification and Exam Board	OCR AS / A2 Level Applied Science
Subject Knowledge and Skills Covered	<p>The AS Course comprises three units</p> <p>Science at Work Analysis at Work Monitoring the Activity of the Human Body</p> <p>The A2 Course comprises three units</p> <p>Investigating the Scientist's Work The Mind and Brain Working Waves</p>
Assessment format	<p>AS Assessment</p> <p>Unit 1 - Science at Work. Internally assessed Portfolio (33% of overall AS grade)</p> <p>Unit 2 - Analysis at Work Internally assessed Portfolio (33% of overall AS grade)</p> <p>Unit 3 - Monitoring the Activity of the Human Body Externally assessed 1½ hour written exam (33% of overall AS Grade)</p> <p>A2 Assessment</p> <p>Unit 1 - Investigating the Scientist's Work Internally assessed Portfolio (33% of overall A2 grade)</p> <p>Unit 2 - The Mind and Brain Internally assessed Portfolio (33% of overall A2 grade)</p> <p>Unit 3 - Working Waves Externally assessed 1½ hour written exam (33% of overall A2 grade)</p>
What qualifications do I need to start the course?	<p>At least 2 C Grades in Science and a C grade in mathematics at GCSE Level.</p> <p>As two thirds of the course is portfolio based you should have at least a grade B in your GCSE science coursework.</p> <p>You must be a diligent, independent learner prepared for hard work!</p>
How can I use this course after Year 13?	<p>Applied Science A Level could lead to a variety of careers, for example in Biology/Chemistry Labs, Forensic Science Technicians, Health Care Professionals and work in Environmental Science.</p> <p>This course is ideal preparation for more science based foundation courses in further education.</p>
What else do I need to know?	<p>This A Level offers the chance to study all 3 of the Sciences with an emphasis on coursework rather than examinations. Pupils are given the opportunity to work at their own pace to produce portfolio work of the highest standard.</p>



## Science - Biology

Which Teacher is in charge of the course?	Mrs P A Birt
Qualification and Exam Board	AS and A Level Biology <u>OCR Specification codes:</u> H021 (AS) H421 (A)
Subject Knowledge and Skills Covered	<u>AS Units (weightings and exam length in brackets):</u> Cells, Exchange and Transport (15% - 1 hour) Molecules, Biodiversity, Food and Health (25% - 1 hour 45 mins) Practical Skills in Biology (10%)  <u>A level Units:</u> Communication, Homeostasis and Energy (15% - 1 hour) Control, Genomes and Environment (25% - 1 hour 45 mins) Practical Skills in Biology (10%)
Assessment format	80% module examinations taken in January and June of each year 20% practical skills assessment under direct teacher supervised, marked internally and externally moderated
What qualifications do I need to start the course?	To be able to cope with the level of material covered during the course, it is essential that students have at least a B grade in GCSE Mathematics At least two B grades in GCSE Core Science and Additional Science are essential while at least one A grade is preferable.
How can I use this course after Year 13?	Previous Biology students have gone on to study biomedical science, medicine, dentistry, physiotherapy, forensics, marine biology, zoology, sports science, anthropology, architecture, law and accountancy to name but a few of the very diverse options!
What else do I need to know?	Most students find AS and A level Chemistry to be of great benefit when studying biology as it complements the biochemistry topics covered during the course.



## Science - Chemistry

Which Teacher is in charge of the course?	Dr K Hall
Qualification and Exam Board	AS and A Level Chemistry <u>OCR Specification codes:</u> H034 (AS) H434 (A)
Subject Knowledge and Skills Covered	<u>AS Units (weightings and exam length in brackets):</u> Atoms, Bonds and Groups (15% - 1 hour) Chains, Energy and Resources (25% - 1 hour 45 mins) Practical Skills in Chemistry (10%)  <u>A level Units:</u> Rings, Polymers and Analysis (15% - 1 hour) Equilibria, Energetics and Elements (25% - 1 hour 45 mins) Practical Skills in Chemistry (10%)
Assessment format	80% module examinations taken in January and June of each year 20% practical skills assessment under direct teacher supervised, marked internally and externally moderated
What qualifications do I need to start the course?	To be able to cope with the level of material covered during the course, it is essential that students have at least a B grade in GCSE Mathematics At least two B grades in GCSE Core Science and Additional Science are essential while at least one A grade is preferable
How can I use this course after Year 13?	Chemistry A Level could lead to a variety of further subjects to study e.g. biochemistry, engineering, medicine and biomedical sciences. It is usually essential for medicine.
What else do I need to know?	Due to the complementary nature of the courses students would benefit from studying other science A level subjects Students / Parents are welcome to discuss the content of the course further in school with any of the Science Tutors.





## Science - Physics

Which Teacher is in charge of the course?	Mr N Edwards
Qualification and Exam Board	OCR AS / A2 Level Physics
Subject Knowledge and Skills Covered	<p>The AS Course contains three units.</p> <p>(1) Mechanics (Motion / Forces in action / Work and energy)</p> <p>(2) Electrons, Waves and Photons (Electric current / Resistance / DC Circuits / Waves / Quantum Physics)</p> <p>(3) Practical Skills</p> <p>The A2 Course contains three units.</p> <p>(1) The Newtonian World (Newton's laws and momentum / Circular motion and oscillations / Thermal Physics)</p> <p>(2) Fields, Particles and Frontiers of Physics (Electric and magnetic fields / Capacitors and exponential decay / Nuclear Physics / Medical imaging / Modelling the Universe)</p> <p>(3) Further Practical Skills</p>
Assessment format	<p><u>AS Assessment</u></p> <p>Unit (1)- Written Examination 1 hour (30 % of AS grade)</p> <p>Unit (2) - Written Examination 1 hour 45 minutes (50 % of AS grade)</p> <p>Unit (3)- Practical Tests (In lessons marked internally, moderated by OCR) (20 % of AS grade)</p> <p><u>A2 Assessment</u></p> <p>Unit (1) - Written Examination 1 hour (15 % of overall A2 grade)</p> <p>Unit (2) - Written Examination 1 hour 45 minutes (25 % of overall A2 grade)</p> <p>Unit (3) - Further Practical Tests (In lessons marked internally, moderated by OCR) (10 % of overall A2 grade)</p>
What qualifications do I need to start the course?	<p>To be able to cope with the level of material covered during the course, it is essential that students have at least a B grade in GCSE Mathematics</p> <p>At least two B grades in GCSE Core Science and Additional Science are essential while at least one A grade is preferable.</p> <p>The most successful candidates also study 'A' level Mathematics</p>
How can I use this course after Year 13?	In addition to studying Physics beyond Advanced Level the course would also be useful in a wide range of other disciplines, most notably the study of various strands of engineering at degree level.
What else do I need to know?	<p>Due to the complementary nature of the courses students would benefit from studying A level Mathematics</p> <p>Students / Parents are welcome to discuss the content of the course further in school with any of the Physics Tutors.</p>



## Sociology

Which Teacher is in charge of the course?	Mrs. R. Brotherton
Qualification and Exam Board	AS and A2 Level Sociology (OCR)
Subject Knowledge and Skills Covered	<p>Sociology is a study of people, society and how they react to each other. You will study four units:</p> <p>Exploring socialisation, culture and Identity: This unit covers the process of socialisation and its role in forming identity. It also explores the research process in context including data collection, analysis and research concepts.</p> <p>Topics in socialisation, culture and identity: The family</p> <p>Power and Control: Crime and Deviance - who commits crime, who is blamed for crime, how does society react to crime?</p> <p>Exploring Social Inequality and Difference: Developing links between sociological thought and methods regarding themes such as power, social inequality, culture and identity.</p> <p>Skills developed will include communication, critical thinking, logical reasoning, using evidence to support an argument, statistical analysis, interpretation of data and appreciation of other viewpoints.</p>
Assessment format	100% examination
What qualifications do I need to start the course?	<p>Essential GCSE English (C)</p> <p>Preferred GCSE Sociology (C)</p>
How can I use this course after Year 13?	Sociology is a highly valuable qualification. Studying it at A-Level will provide an excellent base from which to study Sociology at Degree Level. Also, it will help prepare students for the majority of other degree courses. The subject leads to many different careers in such diverse areas as research, social work, nursing, policing, management, the NHS, politics and teaching.

## School Uniform:

*Please note that uniform is subject to change for September 2012*

### Mandatory Range of Everyday Wear for Girls and Boys

SKIRT	Plain black, knee length.	Not patterned or mottled, not shorter or longer.
OR TROUSERS	Plain black or dark charcoal grey, classic cut.	Not jeans, cords, leather, flared, flecked, striped or patterned, nor any other variation of grey.
POLO SHIRT	Plain white, short-sleeved with embroidered Senior School logo.	No alternative is acceptable.
SWEATSHIRT	Optional wear over Senior School polo shirt. Plain black with embroidered Senior School logo.	No alternative is acceptable. No alternative under-garment is acceptable. No lack of polo shirt is acceptable.
SOCKS STOCKINGS OR TIGHTS	Plain black.	No alternative is acceptable.
SHOES	Plain black, <u>low heeled</u> .	No other colour is acceptable. Trainers, boots, fancy patterns and suede are <b>not</b> acceptable. High heels <b>must not</b> be worn.
TOPCOAT	A single plain colour waist or hip length, with or without hood, anorak/jacket.	No stencils, patterns, logos, illustrations or stripes. No multi colours.

The source of supply of the recognised, embroidered school clothes is: 'LM Sportsplace', The Precinct, Llantwit Major, ☎ 792332

The Friends of Llantwit Major School operates a Second Hand Uniform Shop. Please telephone the school for details of current stock and opening times.

**Please note:** For reasons of safety and security in School the wearing of bracelets, neck chains, earrings and rings is **not** encouraged. Ear-studs are strongly discouraged for the same practical reasons, but in any case not more than one stud per earlobe will be accepted. A discreet amount of make up is permitted for senior students. Head scarves, coloured bows and head-bands are **NOT** allowed. Scarves are **NOT** to be worn inside the School buildings.

Should there be any doubt about the acceptability of a particular item of wear, or of hairstyle or length; the Headteacher's decision must be accepted.