



Gemini
The duplicate finder

Contents

Chapter 1. Introducing Gemini

Overview	3
Key Features	3
System Requirements	3
Download and Installation	4

Chapter 2. Scanning and Cleaning

Scanning for duplicates	5
Selecting Duplicates Manually	7
The AutoSelect Feature	8
Final Check	9
Shredding Duplicates	9

Chapter 3. Preferences

General	10
Exclude List	11

Chapter 4. FAQ

Overview

Gemini is a perfect tool to find and eliminate duplicate files that consume drive space on your Mac. With its intelligent scanning algorithms, stunning design and handy user interface Gemini offers a unique experience of making your Mac free from duplicates in a fascinating way.

Find all your duplicate movies, songs, documents and other files that you don't need and literally "shred" them with Gemini!

Key Features

- Easy-to-use and user-friendly interface
- Drag-and-drop nature
- Accurate comparison of duplicates
- Works with iTunes and iPhoto libraries
- Built-in file preview
- Auto Select wizard
- Scans for duplicate folders too
- Security check
- Finder integration
- Wide sorting options
- Big files are prioritized while scanning
- Support scanning external drives
- Ignores potentially troublesome files
- Duplicates can be erased or moved to Trash
- User can set a minimum size limit for files to scan
- Editable exclude list of files, folders and extensions

System Requirements

Works on Intel Macs only.

- Mac OS X 10.7 or higher
- 4.3 MB of disk space

Download and Installation

Gemini is available for download on the Mac App Store. Click [this link](#) to open Gemini page in Mac App Store and install it.

Now that you have installed Gemini, you can launch it from your Applications folder.

Alternatively, you can search for Gemini in Spotlight and launch it from there.

You can also buy and download Gemini from our [website](#).

To install Gemini from our website follow these steps:

1. Visit the [Gemini page](#) on our website and click Free Download.
2. Run the downloaded Gemini.dmg.
3. Drag the Gemini icon to the Applications folder.

After you have downloaded Gemini from our website, activate it to take full advantage of its features.

Follow these instructions to activate Gemini:

1. Launch Gemini and click **Activate** in its upper right corner.
2. Click **Buy License** in the Activation dialog to buy license, if you haven't done it yet, or click **Enter Activation Number...** to enter the activation number from your confirmation email.

Make sure you include all letters and numbers. Avoid entering blank spaces. As soon as a correct number is in the field, the application will be activated automatically.

Note: You also can automatically activate Gemini by clicking the code in your confirmation email.

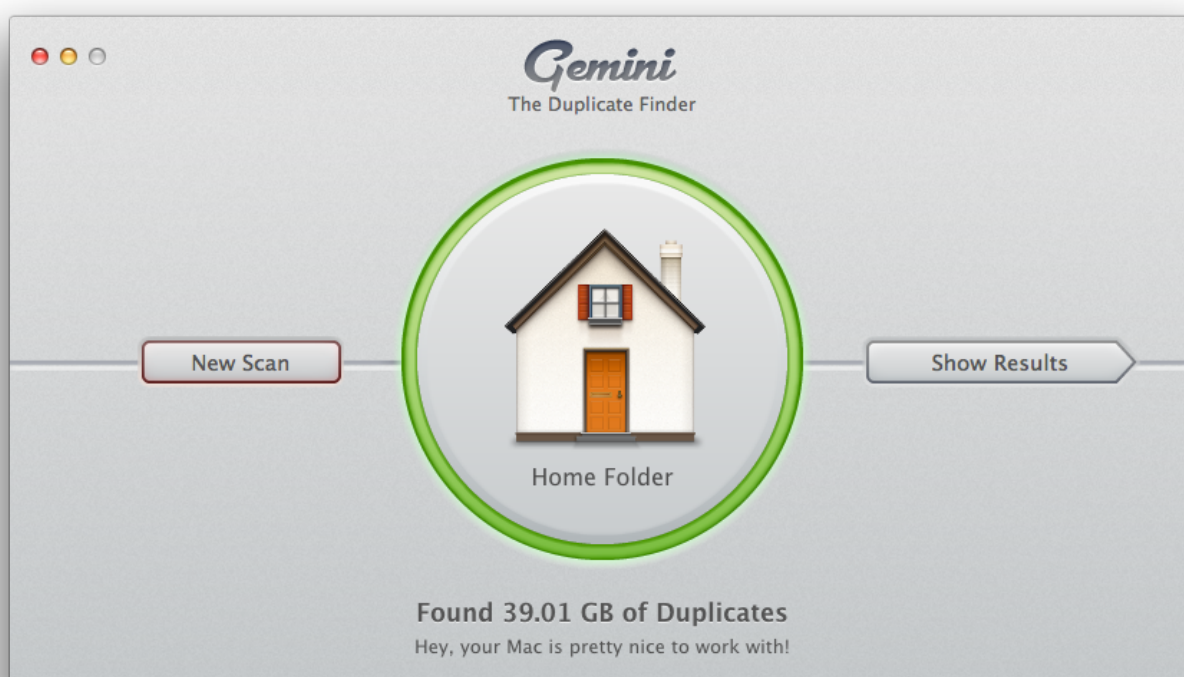
That's all! Your copy of Gemini is successfully activated now.

Scanning for duplicates

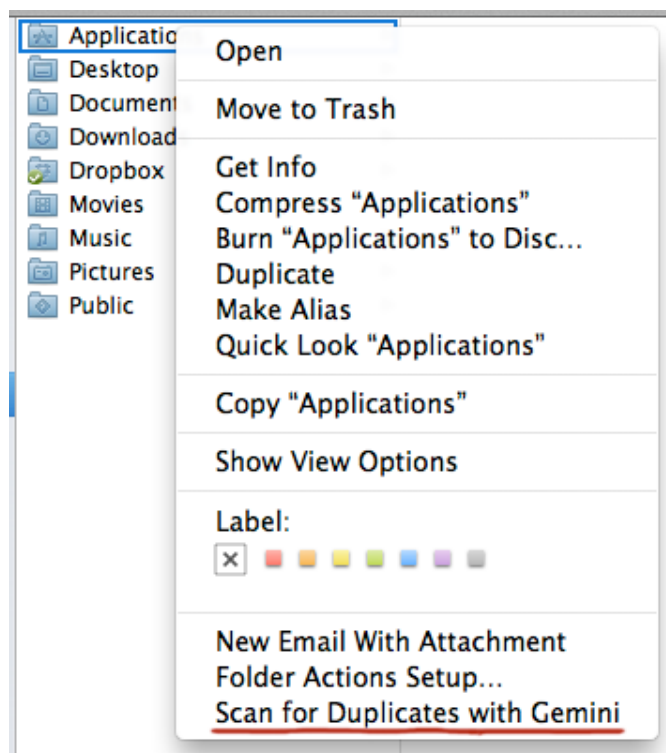
After its launch Gemini will offer you to choose which folders should be scanned for duplicates. You can do that in three different ways:



1. Drop one or more folders from Finder to the drop zone of Gemini. Then click **Scan** to launch the scan process.
2. Click "+" and select one or more folders in the newly opened Finder window. Click **Scan** to start the scan.



3. Reveal the necessary location in Finder and then click **Scan For Duplicates with Gemini** in the control-click menu.



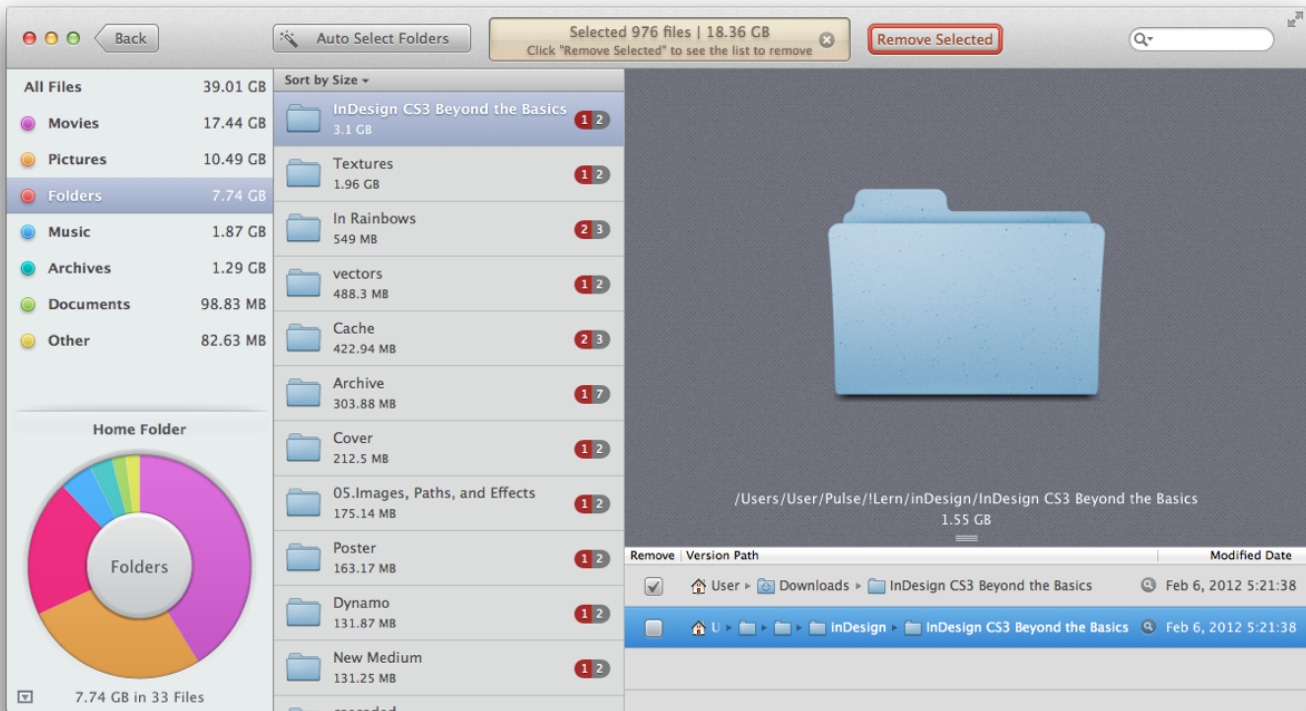
After that you can abort the scan by clicking **Cancel Scan**. That will interrupt the scan process and you will need to start all over again to find duplicates.

You can also click **Stop and Show Results** in order to see the already found duplicates only.

Due to Gemini's advanced algorithms the app is able to find the biggest duplicates first. If you need to quickly free up space on your Mac, you can use the Stop and Show Results button to speed up the process and remove only the duplicates that consume the most space.

Selecting Duplicates Manually

Now that you have proceeded to the list of found duplicates, you can start choosing the ones you don't really need.



The pie chart in the lower left corner helps determine what types of duplicates consume most space.

The middle column shows the list of files that have duplicates on your Mac. Choose the file and you will see the list of all its instances. Every file can be previewed in the right section of the window.

Check the duplicate you don't need in the list of the file instances and it will be moved to the Final Check list. The selected file won't be deleted, it will be only be marked for deletion.

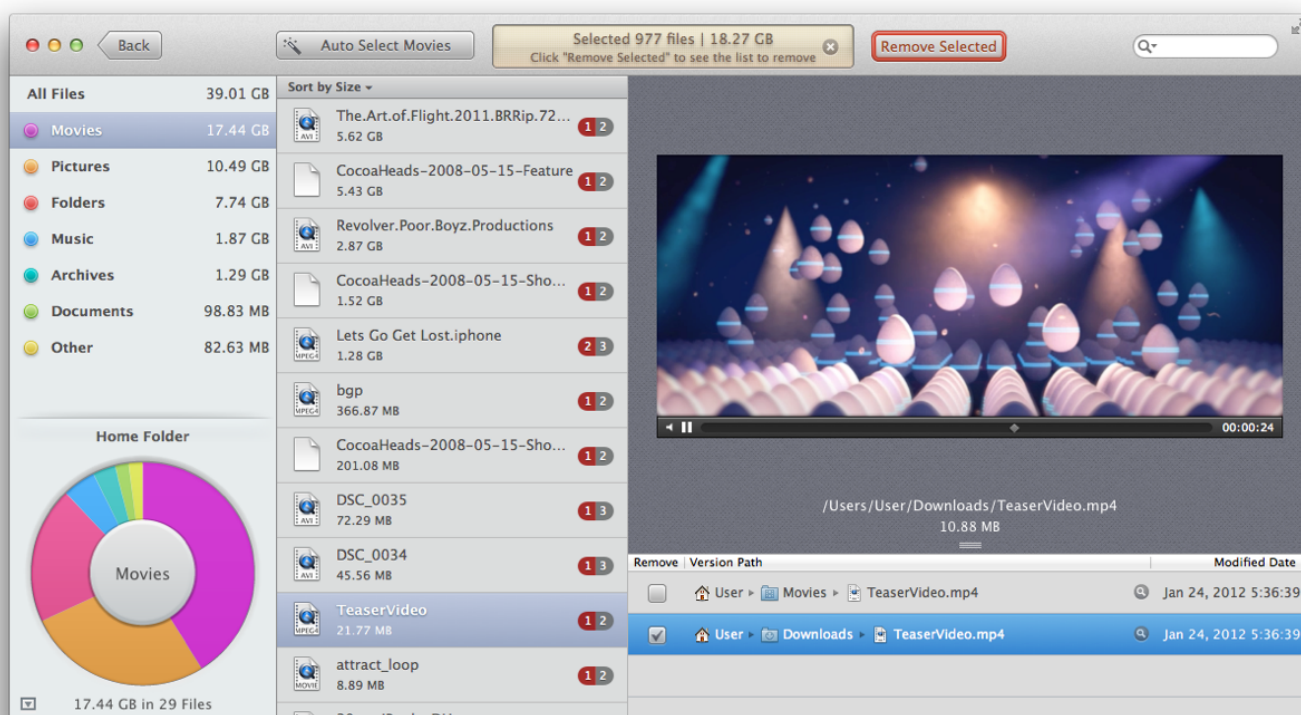
For an every file found you can select the unneeded duplicates and thus create the list of files for deletion.

The Auto Select Feature

Gemini also offers you to save your time and select all unneeded duplicates in one click. When you click **Auto Select**, Gemini automatically checks the files it valued as duplicated and creates the Final Check list.

Auto Select compares found duplicates by nearly a dozen of attributes, such as creation and modification dates, extensions and so on. If the algorithm is unable to determine which instance of a file is a duplicate, it skips all of them. It is done for you to be sure that Auto Select will check only files that most definitely are duplicates and not the originals.

You can also apply the Auto Select feature only to particular categories of files. Select the necessary category of files on the pie chart or above it and click **Auto Select** to pick out the duplicates within the selected category.



Final Check

After you have determined what duplicates should be deleted, click Final Check. The Shred list containing all previously selected duplicates will appear. You can manually uncheck them using the “x” button in front of every file, or you can uncheck all duplicates in bulk by clicking **Put All Back**.



Shredding Duplicates

If you are sure you have selected the duplicates you really want to be deleted, click **Remove**. After that Gemini will spectacularly delete them. This operation was intentionally made showy and pretty slow so you could undo the operation by clicking **Stop** in case you see the file you don't want to be deleted.

By default, the shredding operation moves all duplicates to Trash, so you still can recover them via the Put Back feature in Trash. You can change this option in Preferences and select the complete erasure of files instead of moving them to Trash.

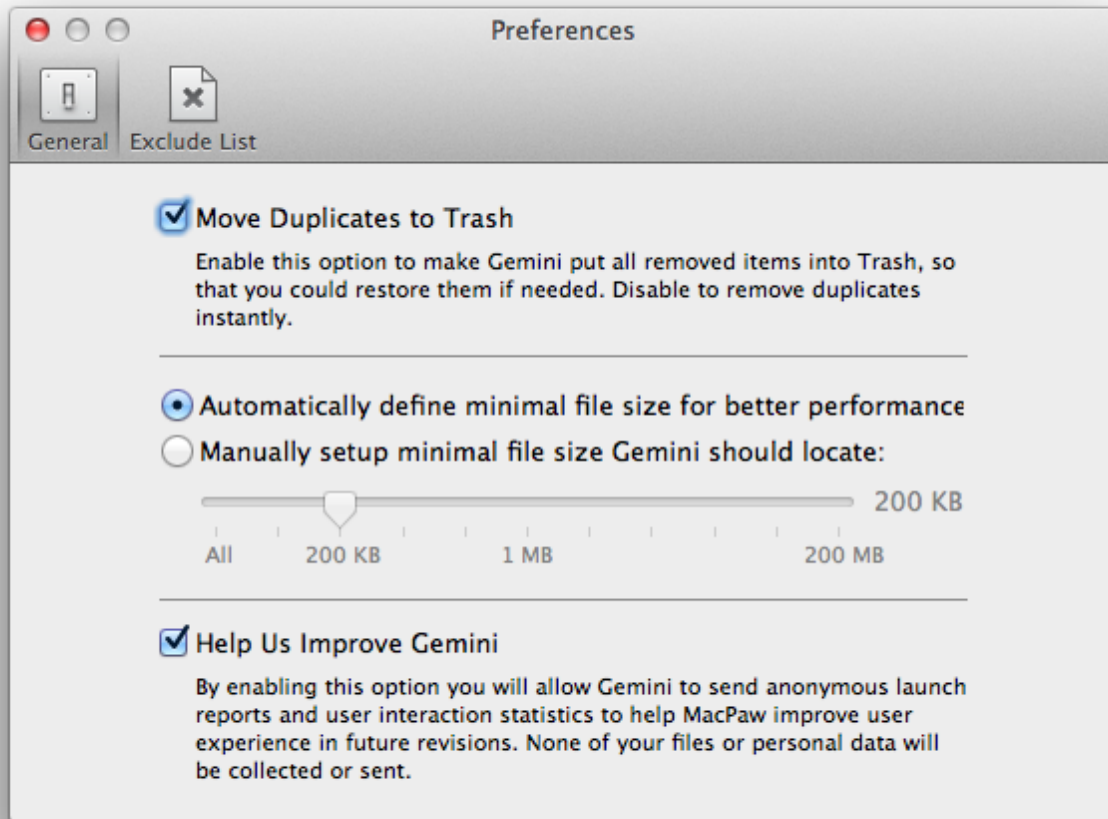
When the duplicates will be finally shredded, you can start a new scan or share your cleaning results with friends in Facebook or Twitter.

Starting from the version 1.1 Gemini provides the Preferences window for advanced users.

You can open Preferences by clicking Gemini -> Preferences in the menu bar or using the hotkey Command+,.

General

The General tab of Preferences provides next options:



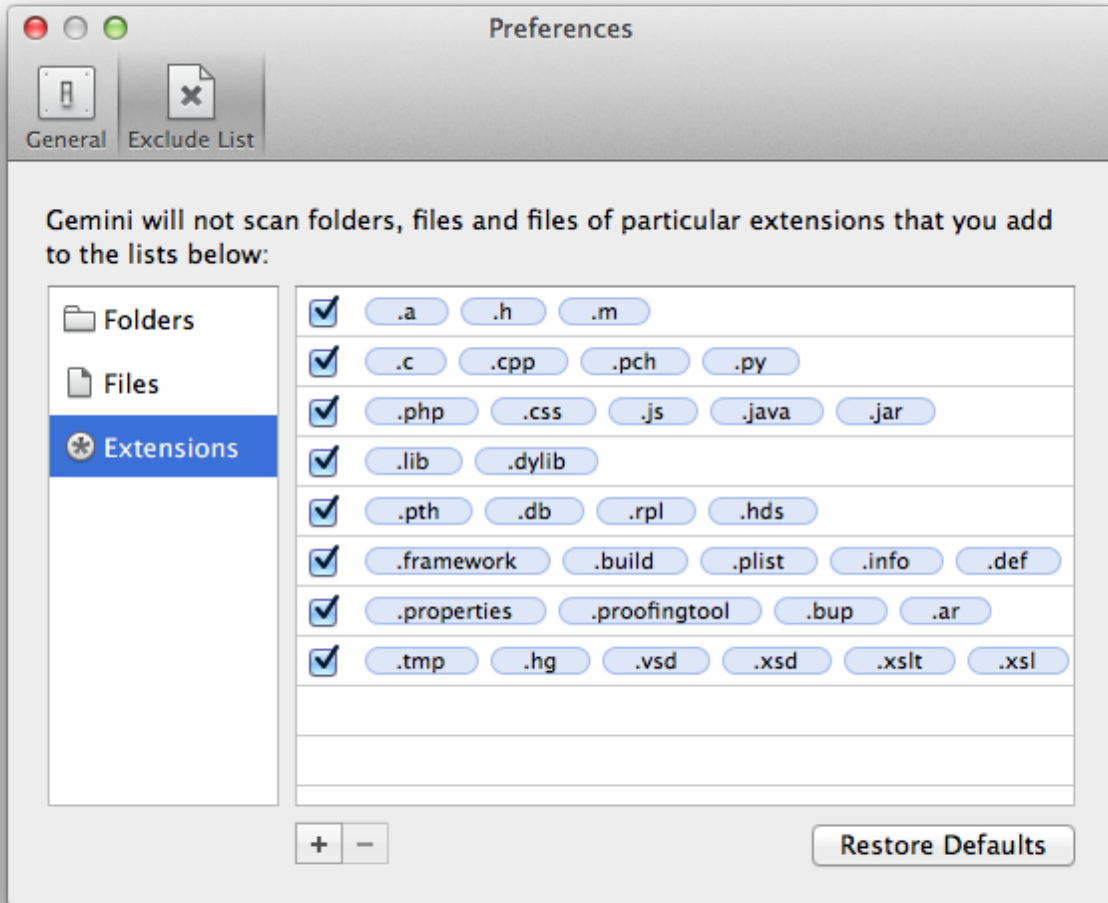
– **Move duplicates to Trash.** Uncheck this option if you want Gemini to erase duplicates instead of moving them to Trash.

– **Automatically define minimal file size for better performance.** To make the scanning process faster Gemini automatically defines the minimum size limit of files to scan. That allows to ignore the smallest files, as in most cases deleting duplicates of such size will not significantly increase the amount of free space on your Mac. However, you can always select to “Manually set up minimal file size Gemini should locate” and manually define the minimum size of files allowed for scanning.

– **Help us improve Gemini.** By default Gemini sends us helpful information about your experience of using it on every launch (we do not get your personal data in any possible way). You can cancel that by unchecking the Help Us Improve Gemini option.

Exclude List

The Exclude List tab of Preferences allows to add files, folders or even file extensions that should be ignored by Gemini while scanning your Mac.



Click **Files** or **Folders** on the left of the window and click “+” to add a necessary file or folder to the corresponding exclude list. You can also add a file or a folder by simply dragging it from Finder to Exclude List.

If you select the already added file or folder and click “-”, it will be removed from the corresponding exclude list. Clicking **Restore Defaults** cancels all the modifications of the exclude list and brings it back to the initial state.

The exclude list of extensions by default contains a few extensions to ignore by Gemini. We found that these files can be duplicated for important reasons and thus should remain intact. However, you can edit this list, add more extensions and remove the existing ones.

FAQ

1. Is Gemini safe to use?

Gemini is totally safe to use. Its scanning algorithms avoid scanning critically important system files so you may be sure you won't remove files that can affect system performance.

Also, if you delete the duplicates with Gemini, you will still be able to restore them, as Gemini does not erase these files, it only puts them to Trash.

2. Can Gemini scan removable drives?

Yes, Gemini can scan hard drives, solid state disks and removable media.

3. Can I exclude particular files from Gemini scan?

Such feature will be implemented in the next releases of Gemini.

4. I cleaned duplicates but Finder shows the same amount of free space on my drive, why?

When you clean duplicates with Gemini, the app moves them to Trash so you can easily restore them.

However, if you are sure you don't need the deleted files, just empty your Trash and the amount of free space on your drive will increase.

5. Does Gemini work with my iPhoto/iTunes files?

Yes. If you have files in your iPhoto or iTunes, Gemini will scan them for duplicates. If you select to remove duplicates from your iTunes library, Gemini will launch iTunes and do that automatically during the shredding process. If you want to remove duplicated images from your iPhoto library, Gemini may also ask you to restart iPhoto after shredding.

6. Does Gemini support iPhoto 9.4?

Yes. Gemini 1.3.1 is able to find and remove duplicates if your iPhoto version is 9.4.1 or earlier.

7. If I have any issues using Gemini, what should I do?

MacPaw offers full-time support for our customers. You can contact our support team via email:

support@macpaw.com or by phone: +1(8775) MACPAW. We also maintain a fully functional support section on our site: <http://macpaw.com/support>

8. How to Uninstall Gemini

Just drag the Gemini icon from the Applications folder to Trash to uninstall Gemini. If you're a CleanMyMac user, you can also use CleanMyMac to uninstall Gemini.

Thank you for using Gemini!