



WHEN YOU KNOW THE DIFFERENCE™

09

DUTCH AIRE



INSTANT CELEBRITY

There's a rising star in the luxury coach world. Newmar is proud to introduce the brand new 2009 Dutch Aire, a coach that's destined to win the world over. Go ahead, take the keys. The show is about to begin.







NEXT HOUSEHOLD NAME



Word will spread about Dutch Aire's beauty and talent. Its phenomenal living area was designed with a contemporary aesthetic that ensconces floor to ceiling. Take special note of the Flexsteel® furniture, polished porcelain flooring, angular light fixtures and hardwood-accented window treatments.

Your space transforms into a personal movie theatre with the optional pre-programmed universal remote control. The entertainment system features a Samsung® LCD TV with a DVD player and Surround Sound system.



PAINT IT BRILLIANT



Subtle touches help make your new coach extraordinary. The Full-Paint Masterpiece™ Finish with durable Super Clear Coat illuminates Dutch Aire's dashing front and rear caps. As your eyes wander, notice the unique new headlights and chrome mirrors with optional sideview cameras.

Taking center stage is the Spartan® Mountain Master chassis. It gives your coach its unbelievable strength and allows for incredible storage space and larger, stronger Michelin® tires.



Your advanced kitchen boils, bakes, sears and sautées fluently. Included are intelligent, stainless appliances, such as a 30" convection oven and four-door refrigerator with icemaker. Simply perfect for bringing your culinary visions to life.

Entertaining is about the presentation. So you'll appreciate the stunning, spacious handcrafted hardwood cabinets and the intricately tiled backsplash. For those who prefer sleeker cabinets, a contemporary flat-panel door option is also available. A designer faucet and Mystera® countertop tie it all together.



MODERN
IN EVERY SENSE
OF THE WORD



STEAL THE SPOTLIGHT



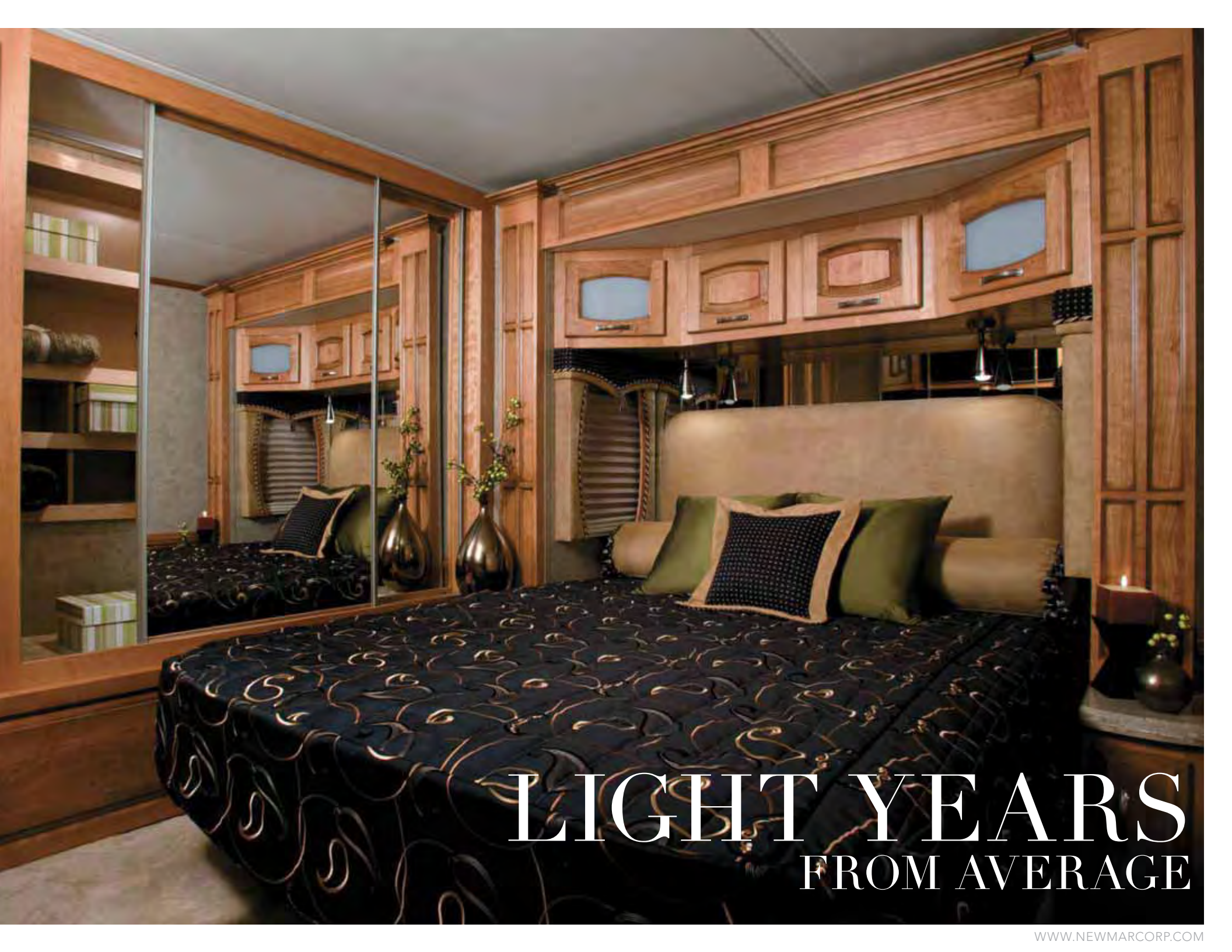
You're about to deliver a powerful performance. Can you handle the Cummins® ISL 425 Hp engine? It sings with just a turn of the ignition. Dutch Aire handles like a dream, thanks to revolutionary Comfort Drive™ Steering. It's an exclusive Newmar innovation that returns the wheel to the center and makes turning and

backing up virtually effortless. The driver command center puts everything at your fingertips, including chassis information, a rearview color monitor system and an optional removable TomTom® navigation system that can be used in other vehicles.



Dutch Aire's bedroom is unbelievably soothing. Feel the Ultrasuede headboard and luxurious accent pillows that offset your King-Sized Bed. Exquisite, aren't they? Imagine how well you'll sleep on the optional Comfortaire mattress. It uses air technology to let you and your partner adjust the firmness to your individual preference.

Turn on your Samsung® 26" LCD TV. See how clear the picture is? Now all you need to decide is whether to drench your room in light or to close the day/night window shades for privacy. This is your time.



LIGHT YEARS
FROM AVERAGE

DÉCOR & EXTERIORS

Dutch Aire's four hardwood cabinet options pair well with any of the color combinations below. Choose from either the standard raised-panel or optional Euro-style cabinet doors.



GRANITE



RUSSET

Carmel Glazed Cherry



Euro Style



Raised Panel

Coastal Cherry



Euro Style



Raised Panel

Mondavi Maple



Euro Style



Raised Panel

Windsor Beech



Euro Style



Raised Panel



SAHARA



SEA MIST

2009 DUTCH AIRE FEATURES

STANDARD FEATURES

CHASSIS FEATURES

Spartan® Mountain Master GT Chassis with IFS
Cummins® ISL 425 Hp
Two-Stage Engine Compression Brake
Adjustable Pedals
Tag Axle (43' Floorplans)
Coated Aluminum Wheels
Hydraulic Leveling Jacks with Single Touch Control
Comfort Drive™ Steering with Adjustable Control
Manual Tilt and Telescopic Steering Column
Cruise Control
Recessed Fuel Fills with Crossover to Fill from Either Side
Back-Up Alarm
Anti-Lock Braking System
Electronic Chassis Information Display in Dash

AIR CONDITIONING AND HEATING

Two 13.5M Penguin™ Heat Pump Central Air Conditioners
(40' Floorplans)
Two 15M Penguin™ Heat Pump Central Air Conditioners
(43' Floorplans)
Hydronic Zone Propane Heating System
Dash Heater and High-Output Air Conditioner
Propane Leak Detector
Wall-Mounted Sensors for Heating and Air Conditioning

APPLIANCES AND ACCESSORIES

30" Convection Microwave Oven
Two-Burner Cooktop with Piezo Ignition
Polished Mystera® Range Cover
Dometic® 9 Cu.Ft. Refrigerator with Ice Maker
Brushed Stainless Steel Refrigerator Front
Washer/Dryer Prep
Samsung® 32" LCD TV in Living Area* (40" LCD TV on
Certain Floorplans)
Samsung® 26" LCD TV in Bedroom
AM/FM Dash Radio with MP3 Adapter and CD Player
Rearview Color Monitor System
Surround Sound Home Theater System with Single-Disc
DVD Player
TV Antenna with Power Booster with Two Interior Jacks
"TV Antenna Is Up" Warning Signal
Satellite Prep—Phone, TV Jack and Receptacle
Audio/Video Switch System with Remote
Telephone Connection with Phone Jacks in Living and Dash Area
Cable TV Connection with RG6 Coax

High Definition Component Wiring and HD-ready Video
Switching System
Two Bedroom Radio Speakers with On/Off Switch
DVD Player in Bedroom
Roof-Mounted Air Horns
10 Bc Fire Extinguisher, and Carbon Monoxide and
Smoke Detectors

CABINETS AND FURNITURE

Windsor Beech Hardwood Cabinets with Raised-Panel,
Double-Arched Cabinet Doors
Hidden-Leaf Dinette Table with Four Chairs (Two Fixed,
Two Folding)*
Polished Mystera® Countertop in Kitchen with Undermounted
Sink and Flush Sink Covers
Polished Mystera® Countertop in Bathroom with
Integrated Sink
Pullout Mobile Island Kitchen Base Cabinet with Polished
Mystera® Countertop*
Knife Hinges on Cabinet Doors
Flexsteel® Furniture
Pullout Pantry Shelves*
Residential Style Full Extension Ball Bearing Drawer Guides
Ultra-leather Driver/Passenger Seats with Six-Way Power and
Power Lumbar, with Footrest on Passenger Seat
Adjustable-Height Shoulder Seat Belts
Lifts on Bed Top to Access Storage Area
Pullout Step-stool with Storage in Bathroom Cabinet
Storage Shelves Recessed into Rear Cap of Rear Wardrobe
Floorplans
Luxurious Pillowtop Mattress with Quilted Bedspread and
Accent Pillows
King Bed*

ELECTRICAL FEATURES

8.0 kW Cummins Onan® Quiet Series Diesel Generator on
Slideout Tray
50-Amp Electrical Service with Flexible Cord
Four 6-Volt House Batteries on Pullout Tray
Battery Disconnect Switch
110-Volt Exterior Receptacle
5-Watt Solar Panel
2,000-Watt Inverter
Emergency Start Switch
Exterior Security Light on Each Side
Midship Side Turn Signals
Recessed Docking Lights
Switched Receptacle for Engine Block Heater
Fluorescent Lights in Ceiling and Overhead Cabinets

Lighted Wardrobes
Slideout Information Voice Module
Manually Operated Hold-to-Run Slideout Switch
ICC Light Flasher Switch
Two 12-Volt Auxiliary Receptacles on Dashboard
Exterior TV Jack
Interior Courtesy Lights
Map Lights

EXTERIOR FEATURES

Full-Paint Masterpiece™ Finish with Front Protective Film
One-Piece Bonded Windshield
Large Chrome Convex Exterior Mirrors with Remote Control
and Defrost
Entrance Door with Automatic Double Step
Power Flush Stepwell Cover
Lighted Exterior Storage Compartments with Cargo Liner,
Controlled by Interior Master Switch
10,000 lb. Towing Hitch with Two Extra 14-Gauge Wires
Lighted Acrylic Assist Handle at Entrance Door
Rear Protective Full-Width Tow Guard
Rear Ladder
Undercoating
Mud Flaps

INTERIOR FEATURES

Padded Vinyl Ceiling
Duo Day/Night Window Shade System (Windshield and
Driver/Passenger Side Windows)
Day/Night Pleated Window Shades and Lambrequins
Mini Blinds in Kitchen and Bathroom
Hardwood Fascia on Living Area Slideouts
Polished Porcelain Floor Tile in Kitchen, Bathroom and
Living Area
Polished Mystera® Routed Backsplash with Tile Inserts
in Kitchen
Raised-Panel Interior Passage Doors
Deluxe Carpeting with High-Density Padding in Living Room
and Bedroom
Interior Assist Handle at Main Entrance Door
Power-Activated Sun Visors

PLUMBING AND BATH FEATURES

Demand Water System with SHURflo® Pump
Sewage Holding-Tank Rinse
Thetford™ Aqua Magic Plus China Stool with Wood Seat and
Sprayer (Vacuum Flush on Rear Bath Floorplans)
Towel Ladder on Hinged Bathroom Door
Exterior Shower

Fiberglass Tub/Shower with Glass Door
Monitor Panel
Water Pump Switches Located in Bathroom, Kitchen and
Exterior Near Gate Valves
Water Filter for Entire Unit
Soap Dispenser at Kitchen Sink

CONSTRUCTION FEATURES

Power Lock Arms

WINDOWS, AWNINGS AND VENTS

Double-Pane, Tinted Safety-Glass Windows
Fan-Tastic® Vent with Rain Sensor in Kitchen and
Bathroom Areas
Skylight in Bathroom*
A & E® 9000 Bedroom and Slideout Window Awnings
A & E® Oasis Power Front Entrance Door Awning
A & E® Weather Pro Power Side Awning
A & E® Slideout Awning Covers
Cockpit Overhead Ventilation System

OPTIONAL FEATURES

AIR CONDITIONING AND HEATING

Two 15M Penguin™ Heat Pump Central Air Conditioners
Extra 15M Penguin™ Heat Pump Central Air Conditioner with
10.0 kW Onan Generator (43' Floorplans)
Hydronic Zone Diesel Heating System

APPLIANCES AND ACCESSORIES

Dometic® 12 Cu.Ft. Side-by-Side Refrigerator with Icemaker
Dometic® 12 Cu.Ft. Four-Door Refrigerator with Icemaker and
Water Dispenser
Norcold® 12 Cu.Ft. Four-Door Refrigerator with Icemaker and
Water Dispenser
Norcold® Freezer on Pullout Tray
One-Piece Washer/Dryer*
Two-Piece Washer/Dryer*
Fisher & Paykel DishDrawer®
Samsung® 23" LCD TV with DVD Player in Living Area
Overhead Cabinet*
Samsung® 32" LCD TV in Front Overhead Cabinet*
SIRIUS® Satellite Radio Capability (Does Not Include SIRIUS®
Monthly Subscription)

Dash Radio/CD Player with Portable TomTom®
Navigation System and MP3 Adapter
10-Disc CD Player (N/A with Dash Radio option)
Pre-Programmed Universal Remote Control
External Entertainment Center with 26" LCD TV and AM/FM
Radio and CD Player
Automatic Satellite without Receiver
In-Motion Satellite without Receiver
Entertainment Center with Relocated Living Area TV
TripTek™ Electronic Travel Information (Displayed on Rearview
Monitor)
Garmin® Navigation System
Sideview Cameras
CB Radio with Antenna
CB Antenna
Central Vacuum with Deluxe Tool Kit

CABINETS AND FURNITURE

Coastal Cherry Hardwood Cabinets
Carmel Glazed Cherry Hardwood Cabinets
Mondavi Maple Hardwood Cabinets
Hardwood Euro-Style Cabinet Doors with Concealed Hinges
Heated Driver/Passenger Seats
Two Ultraleather Euro Recliners with Ottoman*
Ultraleather Swivel Rocker Recliner*
Ultraleather Recliner with Ottoman*
Ultraleather Free-Standing Recliner*
Ultraleather Easy-Bed Sofa*
Ultraleather Combination U-Dinette and Sofa* (Hide-A-Bed
N/A with this option)
Ultraleather Hide-A-Bed Sofa with Air Mattress*
Booth Dinette with Seatbelts
Combination Desk/Dinette Table with Two Fixed and Two
Folding Chairs*
Round Hardwood Dinette Table with Two Fixed and Two
Folding Chairs with Large Dinette Window*
Folding Coffee Table
Comfortaire Air Mattress for Main Bed

ELECTRICAL FEATURES

Roof-Mounted Spot Light
Pre-Wire for Freezer
Energy Management System
Power Cord Rewind Reel
Solar Prep

EXTERIOR FEATURES

Large Storage Tray with Access from Either Side
Small Storage Tray

INTERIOR FEATURES

Undermounted Solid Surface Sinks
Center Entrance Door Layout*

PLUMBING AND BATH FEATURES

Assist Handle in Tub/Shower
Fold-down Shower Seat
Corner Bath Tub
110-Volt Heat Pads for Holding Tanks

CONSTRUCTION FEATURES

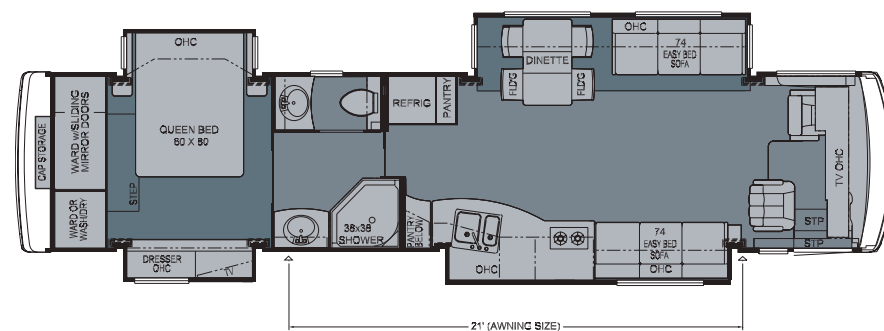
One-Piece Molded Fiberglass Roof with 9mm Decking
Power Baggage Door Locks

WINDOWS, AWNINGS AND VENTS

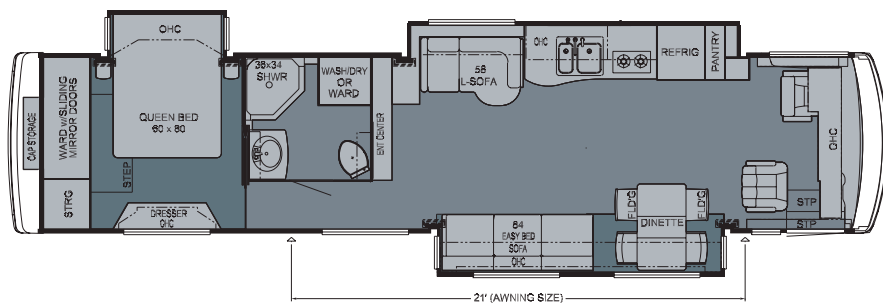
Driver's-Side Power Window
Keyless Entry with Touch Pad and Doorbell
Drop-Down Shade on Weather Pro Side Awning

*CHECK WITH DEALERSHIP ON FLOORPLAN AVAILABILITY

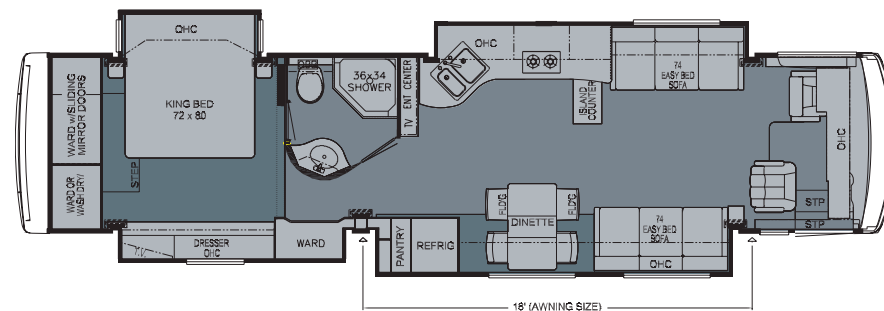
DUTCH AIRE FLOORPLANS



2009 Dutch Aire Diesel Pusher 4023

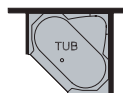


2009 Dutch Aire Diesel Pusher 4055



2009 Dutch Aire Diesel Pusher 4085

P370 Tub ILO
Shower: DADP
4023, 4304, 4317



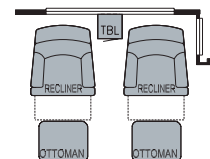
J580 59"
Entertainment
Center: DADP
4317, 4320



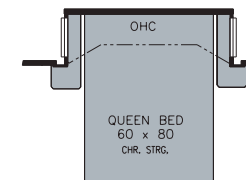
K801 Combination
U-Dinette & L-Sofa:
DADP 4023, 4085,
4304, 4317, 4320

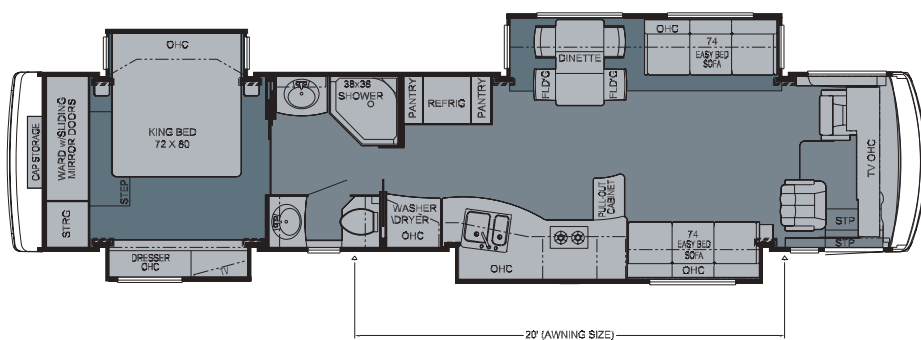


K240 Recliners & Lamp
Stand ILO 84" Sofa:
DADP 4320

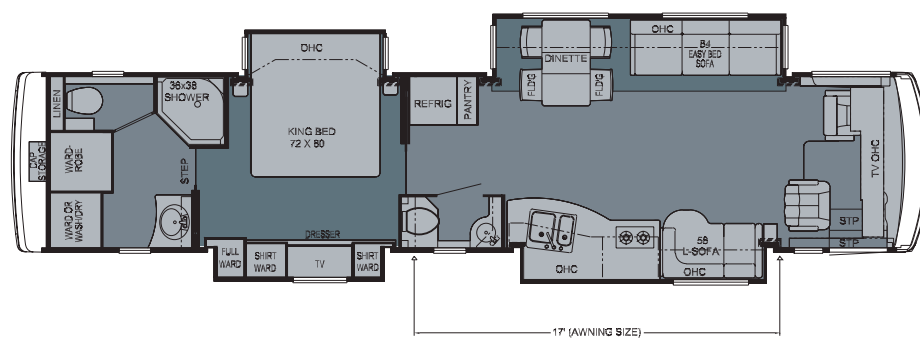


K030 Queen Bed ILO
King: DADP 4085,
4317, 4304, 4320

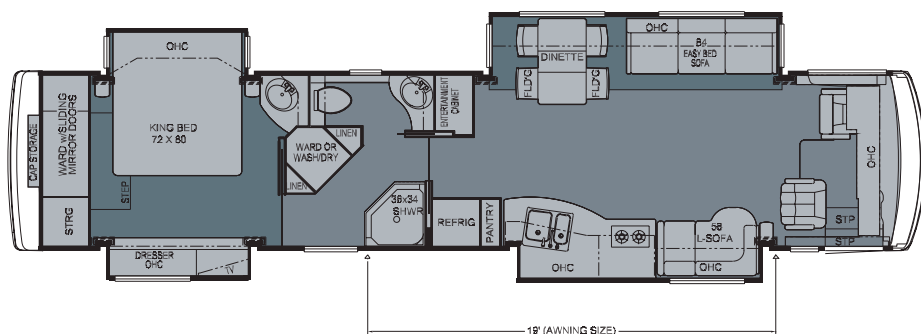




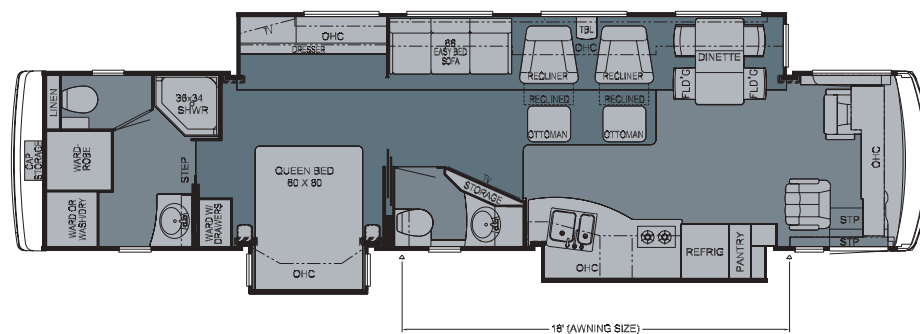
2009 Dutch Aire Diesel Pusher 4304



2009 Dutch Aire Diesel Pusher 4317

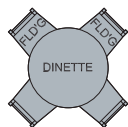


2009 Dutch Aire Diesel Pusher 4320

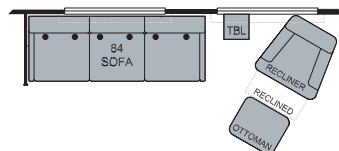


2009 Dutch Aire Diesel Pusher 4331

K541 Round Dinette:
DADP 4023, 4055,
4085, 4304, 4317,
4320, 4331



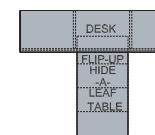
K814 84 Sofa & 1
Recliner ILO 2:
DADP 4331



K420/K421 Booth
Dinette: DADP 4023,
4055, 4085, 4304,
4317, 4320, 4331



K124 Combination
Desk Dinette: DADP
4023, 4055, 4304,
4317, 4320, 4331



DUTCH AIRE CONSTRUCTION



The Spartan® Mountain Master GT doesn't just lead the way, it paves it. Spartan's Mountain Master chassis is America's most popular, most reliable, highest-performing diesel pusher. Experience the power, superior ride, handling and excellent driving performance your coach, built on

a Spartan® Mountain Master chassis, has to offer. The Mountain Master chassis provides excellent resale value and carries a 36-month, 50,000-mile, no-deductible warranty, which includes roadside assistance for the entire warranty period. Sit back and enjoy the ride!



Newmar Express Limited Warranty

Every Dutch Aire Diesel Pusher is backed by Newmar's one-year limited warranty/unlimited miles. Ask your Newmar dealer for details.

Limited Five-Year Structural Warranty

If any part of your Newmar recreational vehicle superstructure (which is the steel/aluminum structure of the sidewall, roof or frame) fails to perform properly within five years from the date of purchase because of faulty workmanship or material supplied by Newmar, it will be repaired without charge for either parts or labor by Newmar. This structural warranty is available only to the original purchaser and is non-transferable.



Roof R-Value = 16

- a. BriteTEK™ Roof
- b. 9mm Wood Decking
- c. Fiberglass Batten Insulation
- d. A/C Ducting
- e. Aluminum Rafter Framing
- f. Kraft Paper Vapor Barrier
- g. 5/8" Bead Foam
- h. 3/16" Panel
- i. Padded Vinyl Overlay

Sidewall R-Value = 11

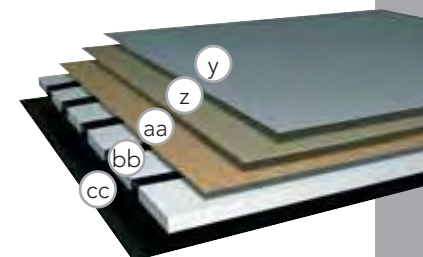
- j. 3/16" Plywood Interior Wall
- k. 5/8" Bead Foam
- l. Kraft Paper Vapor Barrier
- m. Fiberglass Batten Insulation
- n. 3/16" Plywood Exterior Wall
- o. Composite One-Piece Gelcoat Exterior Sidewall
- p. Aluminum Framing with 3 1/2" Header Above

Floor R-Value = 16

- q. Carpet/Tile
- r. Carpet Padding
- s. 5/8" Floor Decking
- t. Fiberglass Batten Insulation
- u. 2"x 3" Wood Framing
- v. Polyethylene Moisture Barrier
- w. Foam Panels (Noise Protection)
- x. Aluminum Ducting

Basement R-Value = 4

- y. Cargo Liner
 - z. 3/8" Floor Decking
 - aa. 3/16" Luan Panel
 - bb. 1 1/2" Bead Foam
 - cc. Aluminum Sheeting with Steel Support Rails to Prevent Bowing and Flexing
1. 13.5M or 15M Penguin™ Heat Pump Central Air Conditioners (2)
 2. One-Piece Bonded Windshield
 3. Coated Aluminum Wheels
 4. Double-Pane, Tinted Safety-Glass Windows
 5. Side-Hinged Baggage Doors with Optional Pullout Tray



FLOORPLAN SPECIFICATIONS

FLOORPLAN	APP. OVERALL LENGTH	WIDTH	APP. OVERALL HEIGHT	INTERIOR WIDTH	INTERIOR HEIGHT	GREY	SEWAGE	WATER	PROPANE	FURNACE
4023	40' 9"	101.5"	12' 6"	95.5"	84"	65 gal.	45 gal.	105 gal.	32 gal.	55,000 Btu
4055	40' 9"	101.5"	12' 6"	95.5"	84"	65 gal.	45 gal.	105 gal.	32 gal.	55,000 Btu
4085	40' 9"	101.5"	12' 6"	95.5"	84"	65 gal.	45 gal.	105 gal.	32 gal.	55,000 Btu
4304	42' 9"	101.5"	12' 9"	95.5"	84"	65 gal.	45 gal.	105 gal.	32 gal.	55,000 Btu
4317	42' 9"	101.5"	12' 9"	95.5"	84"	65 gal.	45 gal.	105 gal.	32 gal.	55,000 Btu
4320	42' 9"	101.5"	12' 9"	95.5"	84"	65 gal.	45 gal.	105 gal.	32 gal.	55,000 Btu
4331	42' 9"	101.5"	12' 9"	95.5"	84"	65 gal.	45 gal.	105 gal.	32 gal.	55,000 Btu

SPARTAN® CHASSIS

FLOORPLAN	ENGINE HP	AXLE RATIO	FUEL CAP.	WHEEL- BASE	FRONT GAWR*	REAR GAWR*	TAG GAWR*	GVWR*	GCWR*	APP. UVW	APP. NCC
4023	425	4.88	150 gal.	276"	14,600 lb.	20,000 lb.	0 lb.	34,600 lb.	44,600 lb.	29,625 lb.	4,975 lb.
4055	425	4.88	150 gal.	276"	14,600 lb.	20,000 lb.	0 lb.	34,600 lb.	44,600 lb.	28,910 lb.	5,690 lb.
4085	425	4.88	150 gal.	276"	14,600 lb.	20,000 lb.	0 lb.	34,600 lb.	44,600 lb.	29,489 lb.	5,111 lb.
4304	425	4.88	150 gal.	276" + TAG	16,000 lb.	20,000 lb.	10,000 lb.	46,000 lb.	56,000 lb.	32,501 lb.	13,499 lb.
4317	425	4.88	150 gal.	276" + TAG	16,000 lb.	20,000 lb.	10,000 lb.	46,000 lb.	56,000 lb.	32,765 lb.	13,235 lb.
4320	425	4.88	150 gal.	276" + TAG	16,000 lb.	20,000 lb.	10,000 lb.	46,000 lb.	56,000 lb.	32,364 lb.	13,636 lb.
4331	425	4.88	150 gal.	276" + TAG	16,000 lb.	20,000 lb.	10,000 lb.	46,000 lb.	56,000 lb.	33,248 lb.	12,752 lb.

Lengths, heights, widths and dry weights are approximate. Weight will vary based on optional equipment added to the above base weight.

GAWR: Gross Axle Weight Rating is the maximum permissible weight for an axle.

GVWR: Gross Vehicle Weight Rating is the maximum permissible weight for a fully loaded motor coach.

GCWR: Gross Combination Weight Rating is the value specified by the manufacturer of the vehicle as the maximum allowable loaded weight of this motor coach and any towed trailer or towed vehicle.

UVW: Unloaded Vehicle Weight is the weight of this motor coach as built at the factory with full fuel, engine oil and coolants. The UVW does not include cargo, fresh water, propane gas or dealer-installed accessories.

NCC: Net Carrying Capacity is the maximum weight of all occupants, including the driver, personal belongings, food, fresh water, waste water, propane gas, tools, tongue weight of towed vehicle, dealer-installed accessories, etc., that can be carried by the motor coach.

*Specifications supplied by the chassis manufacturer.



(Please affix dealer stamp in this area.)

See more of the stunning new

2009 DUTCH AIRE

Visit www.newmarcorp.com

09



NEWMAR CORPORATION • 355 N DELAWARE ST • PO BOX 30 • NAPPANEE IN 46550-0030
574-773-7791 • Fax 574-773-2895 • www.newmarcorp.com