



SPECCHEM

Solution to Service





We have
CONCRETE
COVERED



Concrete Accessories



Concrete Restoration



DOT/Infrastructure

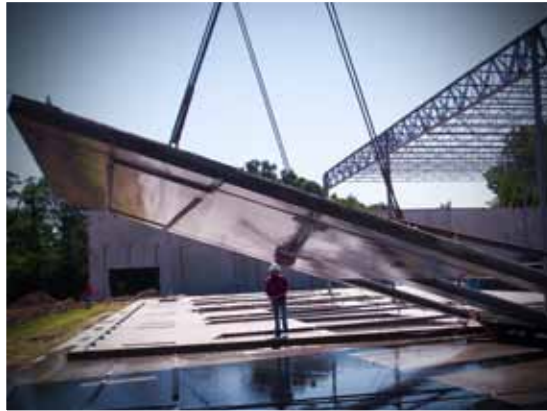


Residential Concrete



Industrial Concrete





Who are we?

SpecChem supplies and services the concrete distributor network with quality construction chemicals that provide performance and value to the industry. SpecChem emphasizes distributor profitability through innovative programs and quality products with a new and higher level of service that our customers deserve in today's marketplace. SpecChem is an industry leader in manufacturing Cementitious Repair Mortars, Cementitious Grouts, comprehensive line of Epoxies, Concrete Sealers, Form Release Agents, Curing Compounds, Bondbreakers and many other concrete chemicals. SpecChem services five key concrete markets: commercial, industrial, residential, D.O.T. & infrastructure and the concrete restoration sector.



Specifications

03 1000 Concrete Forming and Accessories

FORM WORK ACCESSORIES

Form Release Agent
SpecStrip
Bio Strip WB

03 3511 Concrete Floor Finishes

DENSIFIERS AND HARDENERS

Liquid Densifier/Hardener
SpecHard
Cure Hard
LithSeal SC
Dry Shake Hardener
Quartz Hardener

COATING

High Gloss Sealer
Deco Shine
Crystal Shine
Aqua Shine
Colored Coating
Surface Shine Grey
Plastic Aggregate
Surface Grip
Cure & Seal WB

03 3000 Cast in Place

ACCESSORY MATERIALS

Non Shrink Epoxy Grout
SpecPoxy Grout
Non Shrink Grout
SC Multipurpose Grout
SC Precision Grout

BONDING AND JOINTING PRODUCTS

Latex Bonding Agent
Strong Bond
SpecWeld

EPOXY BONDING SYSTEM

SpecPoxy 1000
SpecPoxy 2000
SpecPoxy 3000
SpecPoxy 3000 FS

CURING MATERIALS

Evaporation Reducer
SpecFilm
SpecFilm Concentrate
Curing Compound, Naturally Dissipating Cure
SpecRez
E-Cure

Curing & Sealing Compound, High Gloss

Cure & Seal 25
Cure & Seal 25 WB
Cure & Seal WB
Surface Shine

03 4713 Tilt-Up Concrete

PANEL MATERIAL

Form Bondbreaker
SpecTilt 100
SpecTilt WB
Curing Compound
SpecTilt 100
SpecTilt WB
Non-Shrink Grout
SC Multipurpose Grout

03 0100 Maintenance of Concrete

CLEANING MATERIALS

Degreaser
Orange Peel

CEMENTITIOUS PATCHING AND REPAIR MATERIALS

Cementitious Resurfacing Mortar
Duo Patch
RevCrete
Cementitious Repair Mortar; Trowel Grade
Duo Patch
RevCrete
Final Finish
Cementitious Pavement Repair Mortar
Duo Patch
RepCon V/O
SpecPatch
Precast Patch
Precast Patch 5

EPOXY PATCHING AND REPAIR MATERIALS

Duo Patch
RepCon H
SpecPlug
Epoxy Injection Adhesive
SpecPoxy 1000
Epoxy Bonding Adhesive
SpecPoxy 1000
SpecPoxy 2000
Anchoring Adhesive: Self-leveling or non-sag as applicable. Non-sag Epoxy Products
SpecPoxy 3000 FS

Industry Leadership



Architects & Engineers



Distributors

SPECHEM

Solution to Service



Department of Transportation



Developers & Owners



Contractors



Locations



Corporate Office

1511 Baltimore Ave
Kansas City, MO 64108

Manufacturing Locations

Kansas City, Kansas
Dallas, Texas
Las Vegas, Nevada
Charleston, South Carolina

Sales Offices

Kansas City, Missouri
Dallas, Texas
Chicago, Illinois
St. Petersburg, Florida
Baltimore, Maryland
New York
Massachusetts
Long Beach, California
Stockton, California





Baltimore Kansas City, MO

This historical six-story Lowe & Campbell building has been part of an \$18 million renovation and continues its ties with athletics as it is home to SpecChem and Sporting KC, Kansas City's major league soccer team.



Richmond Kansas City, KS

SpecChem recently renovated our main manufacturing facility located on Richmond Avenue. The Richmond facility used to be home to the maintenance and repair of the Kansas City streetcar.



Bunker Kansas City, KS

This strategically located cementitious manufacturing plant is just off the Kansas River which provides the best sand in the United States for high strength grouts, structural repair mortars and other bagged cementitious concrete restoration materials. SpecChem has a strong relationship with our key raw material suppliers for this facility and has obtained a competitive advantage in the industry due to our logistic position.



Star Dallas, TX

This state of the art manufacturing plant is strategically located to provide a competitive advantage with many raw material suppliers. Being centrally located in the mid-south provides "Star" with a wide geographic coverage range.



Sinatra Las Vegas, NV

Serving the Southwest, "Sinatra" is one of our newest manufacturing plants. "Sinatra" produces a full line of cementitious, epoxy and liquid technologies. The plant is centrally located in the Southwest.



Chopper Charleston, SC

The newest addition to SpecChem's manufacturing portfolio, Chopper is a 70,000 square foot full line manufacturing plant located in the heart of the Southeast. Chopper has the largest capacity of any of SpecChem's manufacturing plants and is strategically located to service Miami to Boston.



Marketing

Corporate Pieces



- Product data - over 100 products
- Comprehensive Concrete Systems
- Easy to access information
- Industry tools and tips



- Over 250 years of industry knowledge and experience

Monthly Newsletters

SPEC CHEM
Solution to Service

Share the Success

RepCon® 928
Polymer-modified rapid setting concrete repair mortar with corrosion inhibitor

RepCon® 928: I-294 Illinois Tollway
Contractor: RW Dunteman



RepCon® 928 Rapid Setting Repair Mortar

- One component, dry-polymer modified
- Fiber-reinforced
- Takes foot traffic in 1 hour after set
- Horizontal and formed vertical application

The Illinois Tollway was experimenting with a new precast roadway slab replacement process and required an Illinois DOT approved rapid hardening repair mortar to anchor the load transfer dowels. RepCon® 928 provided the contractor, RW Dunteman, the solution with outstanding high early strength, excellent durability in an easy to apply consistency. RepCon® 928 achieves over 3,000 psi in 3 hours allowing traffic to resume quickly.

SpecChem provides the most comprehensive concrete chemical systems in the industry. For more information call your local SpecChem sales professional. 816.968.5600 or www.specchemllc.com

Follow us on Facebook, Twitter, and LinkedIn.

CONTACT YOUR SPECHEM PROFESSIONAL FOR MORE INFORMATION.
1511 Baltimore Ave, Suite 600 | Kansas City, MO 64108 | P: 816.968.5600 | F: 816.561.4029 | www.specchemllc.com

Made in America

SPEC CHEM **SpecTech**
Solution to Service June 2014

TIPS: Successful Sealer Application



Concrete sealers serve a very necessary purpose in the beautification and protection of concrete surfaces. The following is a list of guidelines that should be followed when applying membrane forming sealers.

Surface Preparation:
All surfaces to be sealed MUST be properly cleaned.

- Concrete must be clean, dry and free of contaminants and preferably cool, out of the direct hot sun. Sealers applied to hot concrete in direct sun can bubble or flash set creating an uneven appearance
- Early morning dew (condensation) can be difficult to see and can prevent proper adhesion of sealers

- Avoid wide variation in temperature between concrete and air temp
- Patterned/colored concrete – be sure to wash off any residual powder release that may inhibit adhesion of the sealer

Soaps and detergents should not be used to clean concrete surfaces prior to sealer application. Detergents are emulsions and if allowed to dry on a surface, they form a barrier that can inhibit bonding of most acrylic sealers to adhere.

Application Tools:

- Sealers may be applied with a pump-up sprayer or solvent resistant short nap roller
- If roller applied, do not roll too quickly to avoid whipping air bubbles in sealer or use an application pad.
- If using a sprayer, make sure it is clean and has a fan tip nozzle adequate to apply a uniform membrane. Never let the pressure of the sprayer drop below optimum.
- Clean sprayer immediately following application with mineral spirits or xylene.



Sealer Application:

- Test the sealer in an inconspicuous area for desired appearance and to assure proper adhesion.
- Sealer should be applied in a very thin and uniform manner. Back roll any puddles immediately.
- Over application will result in a mottled appearance, could trap moisture, and will not allow sealer to cure properly.
- If at any time the sealer puddles or is over-applied, immediately spray mineral spirits or xylene on top of the sealer to keep liquid and brush out excess to allow the sealer to properly cure.
- For increased gloss, a second coat may be applied after first coat has thoroughly dried, typically 4-6 hours.
- Two thin coats will produce a better gloss than one heavy coat. Cross roll to ensure even application. Apply one direction and then cross roll in perpendicular direction.

Follow us on Facebook, Twitter, and LinkedIn.

Made in America

SpecChem App



Product Library **DOT Approvals** **Calculator** **Crossover**

Categories:

- Feature Products
- Form Release Agents & Form Treatment
- Cure & Sealers
- Liquid Hardeners
- Paving Curing Compounds
- Resin Curing Compounds
- Bond Breakers
- Sealers
- Evaporation Retardant
- Acrylic Bonding Agents

Form Release Agents & Form Treatment:
Bio Strip WB



- Faster ways to access data
- Additional approvals
- English & Spanish Data Sheets
- Easy to use calculator



Product Library **DOT Approvals** **Calculator** **Crossover**

Bar Diameter:

Hole Diameter:

Hole/Bar Depth:

Number of Holes:

Results

Volume of Hole:

Volume of Bar:

Volume of Annulus:

Gallons of Epoxy Per Hole:

Holes Per Gallon:

Total Volume of Epoxy Needed:

Total # of SpecPoxy 22fl-oz Tubes Needed:

Calculate

*All calculations include an estimated 10% spillage, leak and waste factor.



Trade Associations



Training



SpecMasters

SpecChem is home to a 7,600 sq. ft. training facility where we provide one-on-one knowledge about our products. This training program is extremely hands on and provides our customers with substantial information about the SpecChem product line, the industry, concrete chemical marketing concepts and market penetration techniques. It is a high energy and fun learning environment. We look forward to showcasing the SpecChem team and the collaboration with our customers.

- Over 500 graduates
- Attendees from all over the US
- 7,600 sq. ft. training facility
- Simulated Application
- Compatible Systems
- Certified Contractors



Make **CONCRETE** **COVERED**



SPECHEM
Solution to Service

1511 Baltimore Ave, Suite 600
Kansas City, MO 64108
816.968.5600 | www.specchemllc.com