

Introduction

Kintex®-7 FPGAs are available in -3, -2, -1, and -2L speed grades, with -3 having the highest performance. The -2L devices can operate at either of two V_{CCINT} voltages, 0.9V and 1.0V and are screened for lower maximum static power. When operated at $V_{CCINT} = 1.0V$, the speed specification of a -2L device is the same as the -2 speed grade. When operated at $V_{CCINT} = 0.9V$, the -2L performance and static and dynamic power is reduced.

Kintex-7 FPGA DC and AC characteristics are specified in commercial, extended, industrial, and military temperature ranges. Except for the operating temperature range or unless otherwise noted, all the DC and AC electrical parameters are the same for a particular speed grade (that is, the timing characteristics of a -1 speed grade military device are the same as for a -1 speed grade commercial

device). However, only selected speed grades and/or devices are available in each temperature range.

All supply voltage and junction temperature specifications are representative of worst-case conditions. The parameters included are common to popular designs and typical applications.

Available device and package combinations can be found in:

- *7 Series FPGAs Overview* ([DS180](#))
- *Defense-Grade 7 Series FPGAs Overview* ([DS185](#))

This Kintex-7 FPGA data sheet, part of an overall set of documentation on the 7 series FPGAs, is available on the Xilinx website at www.xilinx.com/7.

DC Characteristics

Table 1: Absolute Maximum Ratings (1)

Symbol	Description	Min	Max	Units
FPGA Logic				
V_{CCINT}	Internal supply voltage	-0.5	1.1	V
V_{CCAUX}	Auxiliary supply voltage	-0.5	2.0	V
V_{CCBRAM}	Supply voltage for the block RAM memories	-0.5	1.1	V
V_{CCO}	Output drivers supply voltage for 3.3V HR I/O banks	-0.5	3.6	V
	Output drivers supply voltage for 1.8V HP I/O banks	-0.5	2.0	V
V_{CCAUX_IO}	Auxiliary supply voltage	-0.5	2.06	V
V_{REF}	Input reference voltage	-0.5	2.0	V
$V_{IN}^{(2)(3)(4)}$	I/O input voltage for 3.3V HR I/O banks	-0.40	$V_{CCO} + 0.55$	V
	I/O input voltage for 1.8V HP I/O banks	-0.55	$V_{CCO} + 0.55$	V
	I/O input voltage (when $V_{CCO} = 3.3V$) for V_{REF} and differential I/O standards except TMSD_33 ⁽⁵⁾	-0.40	2.625	V
V_{CCBATT}	Key memory battery backup supply	-0.5	2.0	V
GTX Transceiver				
$V_{MGTAVCC}$	Analog supply voltage for the GTX transmitter and receiver circuits	-0.5	1.1	V
$V_{MGTAVTT}$	Analog supply voltage for the GTX transmitter and receiver termination circuits	-0.5	1.32	V
$V_{MGTVCCAUX}$	Auxiliary analog Quad PLL (QPLL) voltage supply for the GTX transceivers	-0.5	1.935	V
$V_{MGTREFCLK}$	GTX transceiver reference clock absolute input voltage	-0.5	1.32	V

Table 1: Absolute Maximum Ratings (1) (Cont'd)

Symbol	Description	Min	Max	Units
$V_{MGTAVTTRCAL}$	Analog supply voltage for the resistor calibration circuit of the GTX transceiver column	-0.5	1.32	V
V_{IN}	Receiver (RXP/RXN) and Transmitter (TXP/TXN) absolute input voltage	-0.5	1.26	V
$I_{DCIN-FLOAT}$	DC input current for receiver input pins DC coupled RX termination = floating	-	14	mA
$I_{DCIN-MGTAVTT}$	DC input current for receiver input pins DC coupled RX termination = $V_{MGTAVTT}$	-	12	mA
$I_{DCIN-GND}$	DC input current for receiver input pins DC coupled RX termination = GND	-	6.5	mA
$I_{DCOUT-FLOAT}$	DC output current for transmitter pins DC coupled RX termination = floating	-	14	mA
$I_{DCOUT-MGTAVTT}$	DC output current for transmitter pins DC coupled RX termination = $V_{MGTAVTT}$	-	12	mA
XADC				
V_{CCADC}	XADC supply relative to GNDADC	-0.5	2.0	V
V_{REFP}	XADC reference input relative to GNDADC	-0.5	2.0	V
Temperature				
T_{STG}	Storage temperature (ambient)	-65	150	°C
T_{SOL}	Maximum soldering temperature for Pb/Sn component bodies (6)	-	+220	°C
	Maximum soldering temperature for Pb-free component bodies (6)	-	+260	°C
T_j	Maximum junction temperature(6)	-	+125	°C

Notes:

- Stresses beyond those listed under Absolute Maximum Ratings might cause permanent damage to the device. These are stress ratings only, and functional operation of the device at these or any other conditions beyond those listed under Operating Conditions is not implied. Exposure to Absolute Maximum Ratings conditions for extended periods of time might affect device reliability.
- The lower absolute voltage specification always applies.
- For I/O operation, refer to the *7 Series FPGAs SelectIO Resources User Guide* (UG471).
- The maximum limit applies to DC signals. For maximum undershoot and overshoot AC specifications, see Table 4 and Table 5.
- See Table 10 for TMDS_33 specifications.
- For soldering guidelines and thermal considerations, see the *7 Series FPGA Packaging and Pinout Specification* (UG475).

Table 2: Recommended Operating Conditions (1)(2)

Symbol	Description	Min	Typ	Max	Units
FPGA Logic					
$V_{CCINT}^{(3)}$	Internal supply voltage	0.97	1.00	1.03	V
	For -2L (0.9V) devices: internal supply voltage	0.87	0.90	0.93	V
$V_{CCBRAM}^{(3)}$	Block RAM supply voltage	0.97	1.00	1.03	V
	For -2L (0.9V) devices: block RAM supply voltage	0.87	0.90	1.03	V
V_{CCAUX}	Auxiliary supply voltage	1.71	1.80	1.89	V
$V_{CCO}^{(4)(5)}$	Supply voltage for 3.3V HR I/O banks	1.14	-	3.465	V
	Supply voltage for 1.8V HP I/O banks	1.14	-	1.89	V
$V_{CCAUX_IO}^{(6)}$	Auxiliary supply voltage when set to 1.8V	1.71	1.80	1.89	V
	Auxiliary supply voltage when set to 2.0V	1.94	2.00	2.06	V
$V_{IN}^{(7)}$	I/O input voltage	-0.20	-	$V_{CCO} + 0.2$	V
	I/O input voltage (when $V_{CCO} = 3.3V$) for V_{REF} and differential I/O standards except TMDS_33(8)	-0.20	-	2.625	V
$I_{IN}^{(9)}$	Maximum current through any pin in a powered or unpowered bank when forward biasing the clamp diode.	-	-	10	mA
$V_{CCBATT}^{(10)}$	Battery voltage	1.0	-	1.89	V

Table 2: Recommended Operating Conditions (1)(2) (Cont'd)

Symbol	Description	Min	Typ	Max	Units
GTX Transceiver					
$V_{MGTAVCC}^{(11)}$	Analog supply voltage for the GTX transceiver QPLL frequency range ≤ 10.3125 GHz ⁽¹²⁾⁽¹³⁾	0.97	1.0	1.08	V
	Analog supply voltage for the GTX transceiver QPLL frequency range > 10.3125 GHz	1.02	1.05	1.08	V
$V_{MGTAVTT}^{(11)}$	Analog supply voltage for the GTX transmitter and receiver termination circuits	1.17	1.2	1.23	V
$V_{MGTVCCAUX}^{(11)}$	Auxiliary analog QPLL voltage supply for the transceivers	1.75	1.80	1.85	V
$V_{MGTAVTTRCAL}^{(11)}$	Analog supply voltage for the resistor calibration circuit of the GTX transceiver column	1.17	1.2	1.23	V
XADC					
V_{CCADC}	XADC supply relative to GNDADC	1.71	1.80	1.89	V
V_{REFP}	Externally supplied reference voltage	1.20	1.25	1.30	V
Temperature					
T_j	Junction temperature operating range for commercial (C) temperature devices	0	–	85	°C
	Junction temperature operating range for extended (E) temperature devices	0	–	100	°C
	Junction temperature operating range for industrial (I) temperature devices	–40	–	100	°C
	Junction temperature operating range for military (M) temperature devices	–55	–	125	°C

Notes:

1. All voltages are relative to ground.
2. For the design of the power distribution system, consult the *7 Series FPGAs PCB Design and Pin Planning Guide* (UG483).
3. V_{CCINT} and V_{CCBRAM} should be connected to the same supply.
4. Configuration data is retained even if V_{CCO} drops to 0V.
5. Includes V_{CCO} of 1.2V, 1.5V, 1.8V, 2.5V, and 3.3V at $\pm 5\%$.
6. For more information, refer to the V_{CCAUX_IO} section of *7 Series FPGAs SelectIO Resources User Guide* (UG471).
7. The lower absolute voltage specification always applies.
8. See Table 10 for TMD5_33 specifications.
9. A total of 200 mA per bank should not be exceeded.
10. V_{CCBATT} is required only when using bitstream encryption. If battery is not used, connect V_{CCBATT} to either ground or V_{CCAUX} .
11. Each voltage listed requires the filter circuit described in the *7 Series FPGAs GTX/GTH Transceivers User Guide* (UG476).
12. For data rates ≤ 10.3125 Gb/s, $V_{MGTAVCC}$ should be $1.0V \pm 3\%$ for lower power consumption.
13. For lower power consumption, $V_{MGTAVCC}$ should be $1.0V \pm 3\%$ over the entire CPLL frequency range.

Table 3: DC Characteristics Over Recommended Operating Conditions

Symbol	Description	Min	Typ ⁽¹⁾	Max	Units
V_{DRINT}	Data retention V_{CCINT} voltage (below which configuration data might be lost)	0.75	–	–	V
V_{DRI}	Data retention V_{CCAUX} voltage (below which configuration data might be lost)	1.5	–	–	V
I_{REF}	V_{REF} leakage current per pin	–	–	15	μA
I_L	Input or output leakage current per pin (sample-tested)	–	–	15	μA
$C_{IN}^{(2)}$	Die input capacitance at the pad	–	–	8	pF
I_{RPU}	Pad pull-up (when selected) @ $V_{IN} = 0V, V_{CCO} = 3.3V$	90	–	330	μA
	Pad pull-up (when selected) @ $V_{IN} = 0V, V_{CCO} = 2.5V$	68	–	250	μA
	Pad pull-up (when selected) @ $V_{IN} = 0V, V_{CCO} = 1.8V$	34	–	220	μA
	Pad pull-up (when selected) @ $V_{IN} = 0V, V_{CCO} = 1.5V$	23	–	150	μA
	Pad pull-up (when selected) @ $V_{IN} = 0V, V_{CCO} = 1.2V$	12	–	120	μA

Table 3: DC Characteristics Over Recommended Operating Conditions (Cont'd)

Symbol	Description	Min	Typ ⁽¹⁾	Max	Units
I _{RPD}	Pad pull-down (when selected) @ V _{IN} = 3.3V	68	–	330	μA
	Pad pull-down (when selected) @ V _{IN} = 1.8V	45	–	180	μA
I _{CCADC}	Analog supply current, analog circuits in powered up state	–	–	25	mA
I _{BATT} ⁽³⁾	Battery supply current	–	–	150	nA
R _{IN_TERM} ⁽⁴⁾	Thevenin equivalent resistance of programmable input termination to V _{CCO} /2 (UNTUNED_SPLIT_40)	28	40	55	Ω
	Thevenin equivalent resistance of programmable input termination to V _{CCO} /2 (UNTUNED_SPLIT_50)	35	50	65	Ω
	Thevenin equivalent resistance of programmable input termination to V _{CCO} /2 (UNTUNED_SPLIT_60)	44	60	83	Ω
n	Temperature diode ideality factor	–	1.010	–	–
r	Temperature diode series resistance	–	2	–	Ω

Notes:

1. Typical values are specified at nominal voltage, 25°C.
2. This measurement represents the die capacitance at the pad, not including the package.
3. Maximum value specified for worst case process at 25°C.
4. Termination resistance to a V_{CCO}/2 level.

Table 4: V_{IN} Maximum Allowed AC Voltage Overshoot and Undershoot for 3.3V HR I/O Banks⁽¹⁾⁽²⁾

AC Voltage Overshoot	% of UI at –55°C to 125°C	AC Voltage Undershoot	% of UI at –55°C to 125°C
V _{CCO} + 0.55	100	–0.40	100
		–0.45	61.7
		–0.50	25.8
		–0.55	11.0
V _{CCO} + 0.60	46.6	–0.60	4.77
V _{CCO} + 0.65	21.2	–0.65	2.10
V _{CCO} + 0.70	9.75	–0.70	0.94
V _{CCO} + 0.75	4.55	–0.75	0.43
V _{CCO} + 0.80	2.15	–0.80	0.20
V _{CCO} + 0.85	1.02	–0.85	0.09
V _{CCO} + 0.90	0.49	–0.90	0.04
V _{CCO} + 0.95	0.24	–0.95	0.02

Notes:

1. A total of 200 mA per bank should not be exceeded.
2. The peak voltage of the overshoot or undershoot, and the duration above V_{CCO} + 0.20V or below GND – 0.30V, must not exceed the values in this table.

Table 5: V_{IN} Maximum Allowed AC Voltage Overshoot and Undershoot for 1.8V HP I/O Banks⁽¹⁾⁽²⁾

AC Voltage Overshoot	% of UI at –55°C to 125°C	AC Voltage Undershoot	% of UI at –55°C to 125°C
V _{CCO} + 0.55	100	–0.55	100
V _{CCO} + 0.60	50.0 ⁽³⁾	–0.60	50.0 ⁽³⁾
V _{CCO} + 0.65	50.0 ⁽³⁾	–0.65	50.0 ⁽³⁾
V _{CCO} + 0.70	47.0	–0.70	50.0 ⁽³⁾
V _{CCO} + 0.75	21.2	–0.75	50.0 ⁽³⁾

Table 5: V_{IN} Maximum Allowed AC Voltage Overshoot and Undershoot for 1.8V HP I/O Banks⁽¹⁾⁽²⁾ (Cont'd)

AC Voltage Overshoot	% of UI at -55°C to 125°C	AC Voltage Undershoot	% of UI at -55°C to 125°C
$V_{CCO} + 0.80$	9.71	-0.80	50.0 ⁽³⁾
$V_{CCO} + 0.85$	4.51	-0.85	28.4
$V_{CCO} + 0.90$	2.12	-0.90	12.7
$V_{CCO} + 0.95$	1.01	-0.95	5.79

Notes:

1. A total of 200 mA per bank should not be exceeded.
2. The peak voltage of the overshoot or undershoot, and the duration above $V_{CCO} + 0.20V$ or below $GND - 0.30V$, must not exceed the values in this table.
3. For UI lasting less than 20 μs .

Table 6: Typical Quiescent Supply Current

Symbol	Description	Device	Speed Grade					Units
			1.0V				0.9V	
			-3	-2/-2L	-1	-1M	-2L	
I _{CCINTQ}	Quiescent V_{CCINT} supply current	XC7K70T	241	241	241	N/A	187	mA
		XC7K160T	474	474	474	N/A	368	mA
		XC7K325T	810	810	810	N/A	629	mA
		XC7K355T	993	993	993	N/A	771	mA
		XC7K410T	1080	1080	1080	N/A	838	mA
		XC7K420T	1313	1313	1313	N/A	1019	mA
		XC7K480T	1313	1313	1313	N/A	1019	mA
		XQ7K325T	N/A	810	810	810	629	mA
		XQ7K410T	N/A	1080	1080	1080	838	mA
I _{CCOQ}	Quiescent V_{CCO} supply current	XC7K70T	1	1	1	N/A	1	mA
		XC7K160T	1	1	1	N/A	1	mA
		XC7K325T	1	1	1	N/A	1	mA
		XC7K355T	1	1	1	N/A	1	mA
		XC7K410T	1	1	1	N/A	1	mA
		XC7K420T	1	1	1	N/A	1	mA
		XC7K480T	1	1	1	N/A	1	mA
		XQ7K325T	N/A	1	1	1	1	mA
		XQ7K410T	N/A	1	1	1	1	mA
I _{CCAUXQ}	Quiescent V_{CCAUX} supply current	XC7K70T	21	21	21	N/A	21	mA
		XC7K160T	40	40	40	N/A	40	mA
		XC7K325T	68	68	68	N/A	68	mA
		XC7K355T	75	75	75	N/A	75	mA
		XC7K410T	85	85	85	N/A	85	mA
		XC7K420T	99	99	99	N/A	99	mA
		XC7K480T	99	99	99	N/A	99	mA
		XQ7K325T	N/A	68	68	68	68	mA
		XQ7K410T	N/A	85	85	85	85	mA

Table 6: Typical Quiescent Supply Current (Cont'd)

Symbol	Description	Device	Speed Grade					Units
			1.0V				0.9V	
			-3	-2/-2L	-1	-1M	-2L	
I _{CCAUX_IOQ}	Quiescent V _{CCAUX_IO} supply current	XC7K70T	N/A	N/A	N/A	N/A	N/A	mA
		XC7K160T	2	2	2	N/A	2	mA
		XC7K325T	2	2	2	N/A	2	mA
		XC7K355T	N/A	N/A	N/A	N/A	N/A	mA
		XC7K410T	2	2	2	N/A	2	mA
		XC7K420T	N/A	N/A	N/A	N/A	N/A	mA
		XC7K480T	N/A	N/A	N/A	N/A	N/A	mA
		XQ7K325T	N/A	2	2	2	2	mA
		XQ7K410T	N/A	2	2	2	2	mA
I _{CCBRAMQ}	Quiescent V _{CCBRAM} supply current	XC7K70T	6	6	6	N/A	6	mA
		XC7K160T	14	14	14	N/A	14	mA
		XC7K325T	19	19	19	N/A	19	mA
		XC7K355T	31	31	31	N/A	31	mA
		XC7K410T	34	34	34	N/A	34	mA
		XC7K420T	41	41	41	N/A	41	mA
		XC7K480T	41	41	41	N/A	41	mA
		XQ7K325T	N/A	19	19	19	19	mA
		XQ7K410T	N/A	34	34	34	34	mA

Notes:

1. Typical values are specified at nominal voltage, 85°C junction temperatures (T_j) with single-ended SelectIO resources.
2. Typical values are for blank configured devices with no output current loads, no active input pull-up resistors, all I/O pins are 3-state and floating.
3. Use the Xilinx Power Estimator (XPE) spreadsheet tool (download at www.xilinx.com/power) to calculate static power consumption for conditions other than those specified.

Power-On/Off Power Supply Sequencing

The recommended power-on sequence is V_{CCINT}, V_{CCBRAM}, V_{CCAUX}, V_{CCAUX_IO}, and V_{CCO} to achieve minimum current draw and ensure that the I/Os are 3-stated at power-on. The recommended power-off sequence is the reverse of the power-on sequence. If V_{CCINT} and V_{CCBRAM} have the same recommended voltage levels then both can be powered by the same supply and ramped simultaneously. If V_{CCAUX}, V_{CCAUX_IO}, and V_{CCO} have the same recommended voltage levels then they can be powered by the same supply and ramped simultaneously.

For V_{CCO} voltages of 3.3V in HR I/O banks and configuration bank 0:

- The voltage difference between V_{CCO} and V_{CCAUX} must not exceed 2.625V for longer than T_{VCCO2VCCAUX} for each power-on/off cycle to maintain device reliability levels.
- The T_{VCCO2VCCAUX} time can be allocated in any percentage between the power-on and power-off ramps.

The recommended power-on sequence to achieve minimum current draw for the GTX transceivers is V_{CCINT}, V_{MGTAVCC}, V_{MGTAVTT} OR V_{MGTAVCC}, V_{CCINT}, V_{MGTAVTT}. There is no recommended sequencing for V_{MGTVCCAUX}. Both V_{MGTAVCC} and V_{CCINT} can be ramped simultaneously. The recommended power-off sequence is the reverse of the power-on sequence to achieve minimum current draw.

If these recommended sequences are not met, current drawn from V_{MGTAVTT} can be higher than specifications during power-up and power-down.

- When $V_{MGTAVTT}$ is powered before $V_{MGTAVCC}$ and $V_{MGTAVTT} - V_{MGTAVCC} > 150$ mV and $V_{MGTAVCC} < 0.7$ V, the $V_{MGTAVTT}$ current draw can increase by 460 mA per transceiver during $V_{MGTAVCC}$ ramp up. The duration of the current draw can be up to $0.3 \times T_{MGTAVCC}$ (ramp time from GND to 90% of $V_{MGTAVCC}$). The reverse is true for power-down.
- When $V_{MGTAVTT}$ is powered before V_{CCINT} and $V_{MGTAVTT} - V_{CCINT} > 150$ mV and $V_{CCINT} < 0.7$ V, the $V_{MGTAVTT}$ current draw can increase by 50 mA per transceiver during V_{CCINT} ramp up. The duration of the current draw can be up to $0.3 \times T_{VCCINT}$ (ramp time from GND to 90% of V_{CCINT}). The reverse is true for power-down.

Table 7 shows the minimum current, in addition to I_{CCQ} , that are required by Kintex-7 devices for proper power-on and configuration. If the current minimums shown in Table 6 and Table 7 are met, the device powers on after all five supplies have passed through their power-on reset threshold voltages. The FPGA must not be configured until after V_{CCINT} is applied.

Once initialized and configured, use the Xilinx Power Estimator (XPE) spreadsheet tool (download at www.xilinx.com/power) to estimate current drain on these supplies.

Table 7: Power-On Current for Kintex-7 Devices

Device	$I_{CCINTMIN}$	$I_{CCAUXMIN}$	I_{CCOMIN}	I_{CCAUX_IOMIN}	$I_{CCBRAMMIN}$	Units
XC7K70T	$I_{CCINTQ} + 450$	$I_{CCAUXQ} + 40$	$I_{CCOQ} + 40$ mA per bank	$I_{CCOAUXXIOQ} + 40$ mA per bank	$I_{CCBRAMQ} + 40$	mA
XC7K160T	$I_{CCINTQ} + 550$	$I_{CCAUXQ} + 50$	$I_{CCOQ} + 40$ mA per bank	$I_{CCOAUXXIOQ} + 40$ mA per bank	$I_{CCBRAMQ} + 40$	mA
XC7K325T	$I_{CCINTQ} + 600$	$I_{CCAUXQ} + 80$	$I_{CCOQ} + 40$ mA per bank	$I_{CCOAUXXIOQ} + 40$ mA per bank	$I_{CCBRAMQ} + 40$	mA
XC7K355T	$I_{CCINTQ} + 1450$	$I_{CCAUXQ} + 109$	$I_{CCOQ} + 40$ mA per bank	$I_{CCOAUXXIOQ} + 40$ mA per bank	$I_{CCBRAMQ} + 81$	mA
XC7K410T	$I_{CCINTQ} + 1500$	$I_{CCAUXQ} + 125$	$I_{CCOQ} + 40$ mA per bank	$I_{CCOAUXXIOQ} + 40$ mA per bank	$I_{CCBRAMQ} + 90$	mA
XC7K420T	$I_{CCINTQ} + 2200$	$I_{CCAUXQ} + 180$	$I_{CCOQ} + 40$ mA per bank	$I_{CCOAUXXIOQ} + 40$ mA per bank	$I_{CCBRAMQ} + 108$	mA
XC7K480T	$I_{CCINTQ} + 2200$	$I_{CCAUXQ} + 180$	$I_{CCOQ} + 40$ mA per bank	$I_{CCOAUXXIOQ} + 40$ mA per bank	$I_{CCBRAMQ} + 108$	mA
XQ7K325T	$I_{CCINTQ} + 600$	$I_{CCAUXQ} + 80$	$I_{CCOQ} + 40$ mA per bank	$I_{CCOAUXXIOQ} + 40$ mA per bank	$I_{CCBRAMQ} + 40$	mA
XQ7K410T	$I_{CCINTQ} + 1500$	$I_{CCAUXQ} + 125$	$I_{CCOQ} + 40$ mA per bank	$I_{CCOAUXXIOQ} + 40$ mA per bank	$I_{CCBRAMQ} + 90$	mA

Table 8: Power Supply Ramp Time

Symbol	Description	Conditions	Min	Max	Units
T_{VCCINT}	Ramp time from GND to 90% of V_{CCINT}		0.2	50	ms
T_{VCCO}	Ramp time from GND to 90% of V_{CCO}		0.2	50	ms
T_{VCCAUX}	Ramp time from GND to 90% of V_{CCAUX}		0.2	50	ms
T_{VCCAUX_IO}	Ramp time from GND to 90% of V_{CCAUX_IO}		0.2	50	ms
$T_{VCCBRAM}$	Ramp time from GND to 90% of V_{CCBRAM}		0.2	50	ms
$T_{VCCO2VCCAUX}$	Allowed time per power cycle for $V_{CCO} - V_{CCAUX} > 2.625$ V	$T_J = 125^\circ\text{C}^{(1)}$	–	300	ms
		$T_J = 100^\circ\text{C}^{(1)}$	–	500	
		$T_J = 85^\circ\text{C}^{(1)}$	–	800	
$T_{MGTAVCC}$	Ramp time from GND to 90% of $V_{MGTAVCC}$		0.2	50	ms
$T_{MGTAVTT}$	Ramp time from GND to 90% of $V_{MGTAVTT}$		0.2	50	ms
$T_{MGTVCCAUX}$	Ramp time from GND to 90% of $V_{MGTVCCAUX}$		0.2	50	ms

Notes:

1. Based on 240,000 power cycles with nominal V_{CCO} of 3.3V or 36,500 power cycles with a worst case V_{CCO} of 3.465V.

DC Input and Output Levels

Values for V_{IL} and V_{IH} are recommended input voltages. Values for I_{OL} and I_{OH} are guaranteed over the recommended operating conditions at the V_{OL} and V_{OH} test points. Only selected standards are tested. These are chosen to ensure that all standards meet their specifications. The selected standards are tested at a minimum V_{CCO} with the respective V_{OL} and V_{OH} voltage levels shown. Other standards are sample tested.

Table 9: SelectIO DC Input and Output Levels (1)(2)

I/O Standard	V_{IL}		V_{IH}		V_{OL}	V_{OH}	I_{OL}	I_{OH}
	V, Min	V, Max	V, Min	V, Max	V, Max	V, Min	mA	mA
HSTL_I	-0.300	$V_{REF} - 0.100$	$V_{REF} + 0.100$	$V_{CCO} + 0.300$	0.400	$V_{CCO} - 0.400$	8	-8
HSTL_I_12	-0.300	$V_{REF} - 0.080$	$V_{REF} + 0.080$	$V_{CCO} + 0.300$	25% V_{CCO}	75% V_{CCO}	6.3	-6.3
HSTL_I_18	-0.300	$V_{REF} - 0.100$	$V_{REF} + 0.100$	$V_{CCO} + 0.300$	0.400	$V_{CCO} - 0.400$	8	-8
HSTL_II	-0.300	$V_{REF} - 0.100$	$V_{REF} + 0.100$	$V_{CCO} + 0.300$	0.400	$V_{CCO} - 0.400$	16	-16
HSTL_II_18	-0.300	$V_{REF} - 0.100$	$V_{REF} + 0.100$	$V_{CCO} + 0.300$	0.400	$V_{CCO} - 0.400$	16	-16
HSUL_12	-0.300	$V_{REF} - 0.130$	$V_{REF} + 0.130$	$V_{CCO} + 0.300$	20% V_{CCO}	80% V_{CCO}	0.1	-0.1
LVC MOS12	-0.300	35% V_{CCO}	65% V_{CCO}	$V_{CCO} + 0.300$	0.400	$V_{CCO} - 0.400$	Note 3	Note 3
LVC MOS15, LVDCI_15	-0.300	35% V_{CCO}	65% V_{CCO}	$V_{CCO} + 0.300$	25% V_{CCO}	75% V_{CCO}	Note 4	Note 4
LVC MOS18, LVDCI_18	-0.300	35% V_{CCO}	65% V_{CCO}	$V_{CCO} + 0.300$	0.450	$V_{CCO} - 0.450$	Note 5	Note 5
LVC MOS25	-0.300	0.700	1.700	$V_{CCO} + 0.300$	0.400	$V_{CCO} - 0.400$	Note 6	Note 6
LVC MOS33	-0.300	0.800	2.000	3.450	0.400	$V_{CCO} - 0.400$	Note 6	Note 6
LV TTL	-0.300	0.800	2.000	3.450	0.400	2.400	Note 7	Note 7
MOBILE_DDR	-0.300	20% V_{CCO}	80% V_{CCO}	$V_{CCO} + 0.300$	10% V_{CCO}	90% V_{CCO}	0.1	-0.1
PCI33_3	-0.400	30% V_{CCO}	50% V_{CCO}	$V_{CCO} + 0.500$	10% V_{CCO}	90% V_{CCO}	1.5	-0.5
SSTL12	-0.300	$V_{REF} - 0.100$	$V_{REF} + 0.100$	$V_{CCO} + 0.300$	$V_{CCO}/2 - 0.150$	$V_{CCO}/2 + 0.150$	14.25	-14.25
SSTL135	-0.300	$V_{REF} - 0.090$	$V_{REF} + 0.090$	$V_{CCO} + 0.300$	$V_{CCO}/2 - 0.150$	$V_{CCO}/2 + 0.150$	13.0	-13.0
SSTL135_R	-0.300	$V_{REF} - 0.090$	$V_{REF} + 0.090$	$V_{CCO} + 0.300$	$V_{CCO}/2 - 0.150$	$V_{CCO}/2 + 0.150$	8.9	-8.9
SSTL15	-0.300	$V_{REF} - 0.100$	$V_{REF} + 0.100$	$V_{CCO} + 0.300$	$V_{CCO}/2 - 0.175$	$V_{CCO}/2 + 0.175$	13.0	-13.0
SSTL15_R	-0.300	$V_{REF} - 0.100$	$V_{REF} + 0.100$	$V_{CCO} + 0.300$	$V_{CCO}/2 - 0.175$	$V_{CCO}/2 + 0.175$	8.9	-8.9
SSTL18_I	-0.300	$V_{REF} - 0.125$	$V_{REF} + 0.125$	$V_{CCO} + 0.300$	$V_{CCO}/2 - 0.470$	$V_{CCO}/2 + 0.470$	8	-8
SSTL18_II	-0.300	$V_{REF} - 0.125$	$V_{REF} + 0.125$	$V_{CCO} + 0.300$	$V_{CCO}/2 - 0.600$	$V_{CCO}/2 + 0.600$	13.4	-13.4

Notes:

1. Tested according to relevant specifications.
2. 3.3V and 2.5V standards are only supported in 3.3V I/O banks.
3. Supported drive strengths of 2, 4, 6, or 8 mA in HP I/O banks and 4, 8, or 12 mA in HR I/O banks.
4. Supported drive strengths of 2, 4, 6, 8, 12, or 16 mA in HP I/O banks and 4, 8, 12, or 16 mA in HR I/O banks.
5. Supported drive strengths of 2, 4, 6, 8, 12, or 16 mA in HP I/O banks and 4, 8, 12, 16, or 24 mA in HR I/O banks.
6. Supported drive strengths of 4, 8, 12, or 16 mA
7. Supported drive strengths of 4, 8, 12, 16, or 24 mA
8. For detailed interface specific DC voltage levels, see the *7 Series FPGAs SelectIO Resources User Guide* ([UG471](#)).

Table 10: Differential SelectIO DC Input and Output Levels

I/O Standard	V _{ICM} ⁽¹⁾			V _{ID} ⁽²⁾			V _{OCM} ⁽³⁾			V _{OD} ⁽⁴⁾		
	V, Min	V, Typ	V, Max	V, Min	V, Typ	V, Max	V, Min	V, Typ	V, Max	V, Min	V, Typ	V, Max
BLVDS_25	0.300	1.200	1.425	0.100	–	–	–	1.250	–	Note 5		
MINI_LVDS_25	0.300	1.200	V _{CCAUX}	0.200	0.400	0.600	1.000	1.200	1.400	0.300	0.450	0.600
PPDS_25	0.200	0.900	V _{CCAUX}	0.100	0.250	0.400	0.500	0.950	1.400	0.100	0.250	0.400
RSDS_25	0.300	0.900	1.500	0.100	0.350	0.600	1.000	1.200	1.400	0.100	0.350	0.600
TMDS_33	2.700	2.965	3.230	0.150	0.675	1.200	V _{CCO} –0.405	V _{CCO} –0.300	V _{CCO} –0.190	0.400	0.600	0.800

Notes:

1. V_{ICM} is the input common mode voltage.
2. V_{ID} is the input differential voltage (Q – \bar{Q}).
3. V_{OCM} is the output common mode voltage.
4. V_{OD} is the output differential voltage (Q – \bar{Q}).
5. V_{OD} for BLVDS will vary significantly depending on topology and loading.
6. LVDS_25 is specified in Table 12.
7. LVDS is specified in Table 13.

Table 11: Complementary Differential SelectIO DC Input and Output Levels

I/O Standard	V _{ICM} ⁽¹⁾			V _{ID} ⁽²⁾		V _{OL} ⁽³⁾	V _{OH} ⁽⁴⁾	I _{OL}	I _{OH}
	V, Min	V, Typ	V, Max	V, Min	V, Max	V, Max	V, Min	mA, Max	mA, Min
DIFF_HSTL_I	0.300	0.750	1.125	0.100	–	0.400	V _{CCO} –0.400	8.00	–8.00
DIFF_HSTL_I_18	0.300	0.900	1.425	0.100	–	0.400	V _{CCO} –0.400	8.00	–8.00
DIFF_HSTL_II	0.300	0.750	1.125	0.100	–	0.400	V _{CCO} –0.400	16.00	–16.00
DIFF_HSTL_II_18	0.300	0.900	1.425	0.100	–	0.400	V _{CCO} –0.400	16.00	–16.00
DIFF_HSUL_12	0.300	0.600	0.850	0.100	–	20% V _{CCO}	80% V _{CCO}	0.100	–0.100
DIFF_MOBILE_DDR	0.300	0.900	1.425	0.100	–	10% V _{CCO}	90% V _{CCO}	0.100	–0.100
DIFF_SSTL12	0.300	0.600	0.850	0.100	–	(V _{CCO} /2) – 0.150	(V _{CCO} /2) + 0.150	14.25	–14.25
DIFF_SSTL135	0.300	0.675	1.000	0.100	–	(V _{CCO} /2) – 0.150	(V _{CCO} /2) + 0.150	13.0	–13.0
DIFF_SSTL135_R	0.300	0.675	1.000	0.100	–	(V _{CCO} /2) – 0.150	(V _{CCO} /2) + 0.150	8.9	–8.9
DIFF_SSTL15	0.300	0.750	1.125	0.100	–	(V _{CCO} /2) – 0.175	(V _{CCO} /2) + 0.175	13.0	–13.0
DIFF_SSTL15_R	0.300	0.750	1.125	0.100	–	(V _{CCO} /2) – 0.175	(V _{CCO} /2) + 0.175	8.9	–8.9
DIFF_SSTL18_I	0.300	0.900	1.425	0.100	–	(V _{CCO} /2) – 0.470	(V _{CCO} /2) + 0.470	8.00	–8.00
DIFF_SSTL18_II	0.300	0.900	1.425	0.100	–	(V _{CCO} /2) – 0.600	(V _{CCO} /2) + 0.600	13.4	–13.4

Notes:

1. V_{ICM} is the input common mode voltage.
2. V_{ID} is the input differential voltage (Q – \bar{Q}).
3. V_{OL} is the single-ended low-output voltage.
4. V_{OH} is the single-ended high-output voltage.

LVDS DC Specifications (LVDS_25)

The LVDS_25 standard is available in the HR I/O banks. See the *7 Series FPGAs SelectIO Resources User Guide* ([UG471](#)) for more information.

Table 12: LVDS_25 DC Specifications

Symbol	DC Parameter	Conditions	Min	Typ	Max	Units
V_{CCO}	Supply Voltage		2.375	2.500	2.625	V
V_{OH}	Output High Voltage for Q and \bar{Q}	$R_T = 100 \Omega$ across Q and \bar{Q} signals	–	–	1.675	V
V_{OL}	Output Low Voltage for Q and \bar{Q}	$R_T = 100 \Omega$ across Q and \bar{Q} signals	0.700	–	–	V
V_{ODIFF}	Differential Output Voltage: (Q – \bar{Q}), Q = High (\bar{Q} – Q), \bar{Q} = High	$R_T = 100 \Omega$ across Q and \bar{Q} signals	247	350	600	mV
V_{OCM}	Output Common-Mode Voltage	$R_T = 100 \Omega$ across Q and \bar{Q} signals	1.000	1.250	1.425	V
V_{IDIFF}	Differential Input Voltage: (Q – \bar{Q}), Q = High (\bar{Q} – Q), \bar{Q} = High		100	350	600	mV
V_{ICM}	Input Common-Mode Voltage		0.300	1.200	1.425	V

Notes:

1. Differential inputs for LVDS_25 can be placed in banks with V_{CCO} levels that are different from the required level for outputs. Refer to the *7 Series FPGAs SelectIO Resources User Guide* ([UG471](#)) for more information.

LVDS DC Specifications (LVDS)

The LVDS standard is available in the HP I/O banks. See the *7 Series FPGAs SelectIO Resources User Guide* ([UG471](#)) for more information.

Table 13: LVDS DC Specifications

Symbol	DC Parameter	Conditions	Min	Typ	Max	Units
V_{CCO}	Supply Voltage		1.710	1.800	1.890	V
V_{OH}	Output High Voltage for Q and \bar{Q}	$R_T = 100 \Omega$ across Q and \bar{Q} signals	–	–	1.675	V
V_{OL}	Output Low Voltage for Q and \bar{Q}	$R_T = 100 \Omega$ across Q and \bar{Q} signals	0.825	–	–	V
V_{ODIFF}	Differential Output Voltage: (Q – \bar{Q}), Q = High (\bar{Q} – Q), \bar{Q} = High	$R_T = 100 \Omega$ across Q and \bar{Q} signals	247	350	600	mV
V_{OCM}	Output Common-Mode Voltage	$R_T = 100 \Omega$ across Q and \bar{Q} signals	1.000	1.250	1.425	V
V_{IDIFF}	Differential Input Voltage: (Q – \bar{Q}), Q = High (\bar{Q} – Q), \bar{Q} = High	Common-mode input voltage = 1.25V	100	350	600	mV
V_{ICM}	Input Common-Mode Voltage	Differential input voltage = ± 350 mV	0.300	1.200	1.425	V

Notes:

1. Differential inputs for LVDS can be placed in banks with V_{CCO} levels that are different from the required level for outputs. Refer to the *7 Series FPGAs SelectIO Resources User Guide* ([UG471](#)) for more information.

AC Switching Characteristics

All values represented in this data sheet are based on the speed specifications in the Vivado® Design Suite 2013.4 and ISE® software 14.7 as outlined in [Table 14](#).

Table 14: Kintex-7 FPGA Speed Specification Version By Device

Version In:		Typical V_{CCINT} (Table 2)	Device
ISE 14.7	Vivado 2013.4		
1.10	1.11	1.0V	XC7K70T, XC7K160T, XC7K325T, XC7K355T, XC7K410T, XC7K420T, XC7K480T
1.09	1.09	0.9V	XC7K70T, XC7K160T, XC7K325T, XC7K355T, XC7K410T, XC7K420T, XC7K480T
1.05	1.06	1.0V	XQ7K325T, XQ7K410T
1.05	1.05	0.9V	XQ7K325T, XQ7K410T

Switching characteristics are specified on a per-speed-grade basis and can be designated as Advance, Preliminary, or Production. Each designation is defined as follows:

Advance Product Specification

These specifications are based on simulations only and are typically available soon after device design specifications are frozen. Although speed grades with this designation are considered relatively stable and conservative, some under-reporting might still occur.

Preliminary Product Specification

These specifications are based on complete ES (engineering sample) silicon characterization. Devices and speed grades with this designation are intended to give a better indication of the expected performance of production silicon. The probability of under-reporting delays is greatly reduced as compared to Advance data.

Product Specification

These specifications are released once enough production silicon of a particular device family member has been characterized to provide full correlation between specifications and devices over numerous production lots. There is no under-reporting of delays, and customers receive formal notification of any subsequent changes. Typically, the slowest speed grades transition to production before faster speed grades.

Testing of AC Switching Characteristics

Internal timing parameters are derived from measuring internal test patterns. All AC switching characteristics are representative of worst-case supply voltage and junction temperature conditions.

For more specific, more precise, and worst-case guaranteed data, use the values reported by the static timing analyzer and back-annotate to the simulation net list. Unless otherwise noted, values apply to all Kintex-7 FPGAs.

Speed Grade Designations

Since individual family members are produced at different times, the migration from one category to another depends completely on the status of the fabrication process for each device. [Table 15](#) correlates the current status of each Kintex-7 device on a per speed grade basis.

Table 15: Kintex-7 Device Speed Grade Designations

Device	Speed Grade Designations		
	Advance	Preliminary	Production
XC7K70T			-3, -2, -2L(1.0V), -1, and -2L (0.9V)
XC7K160T			-3, -2, -2L(1.0V), -1, and -2L (0.9V)
XC7K325T			-3, -2, -2L(1.0V), -1, and -2L (0.9V)
XC7K355T			-3, -2, -2L(1.0V), -1, and -2L (0.9V)
XC7K410T			-3, -2, -2L(1.0V), -1, and -2L (0.9V)
XC7K420T			-3, -2, -2L(1.0V), -1, and -2L (0.9V)
XC7K480T			-3, -2, -2L(1.0V), -1, and -2L (0.9V)
XQ7K325T			-2I, -2L(1.0V), -1I, -2L(0.9V), and -1M
XQ7K410T		-2I, -2L(1.0V), -1I, -2L(0.9V), and -1M	

Production Silicon and Software Status

In some cases, a particular family member (and speed grade) is released to production before a speed specification is released with the correct label (Advance, Preliminary, Production). Any labeling discrepancies are corrected in subsequent speed specification releases.

[Table 16](#) lists the production released Kintex-7 device, speed grade, and the minimum corresponding supported speed specification version and software revisions. The software and speed specifications listed are the minimum releases required for production. All subsequent releases of software and speed specifications are valid.

Table 16: Kintex-7 Device Production Software and Speed Specification Release

Device	Speed Grade Designations			
	1.0V			0.9V ⁽¹⁾
	-3	-2/-2L	-1	-1M
XC7K70T	Vivado tools 2012.4 v1.08 or ISE tools 14.2 v1.06		N/A	Vivado tools 2012.4 v1.07 or ISE tools 14.3 v1.06
XC7K160T	Vivado tools 2012.4 v1.08 or ISE tools 14.2 v1.06		N/A	Vivado tools 2012.4 v1.07 or ISE tools 14.3 v1.06
XC7K325T	Vivado tools 2012.4 v1.08 or ISE tools 14.2 v1.06		N/A	Vivado tools 2012.4 v1.07 or ISE tools 14.3 v1.06
XC7K355T	Vivado tools 2012.4 v1.08 or ISE tools 14.2 v1.06		N/A	Vivado tools 2012.4 v1.07 or ISE tools 14.3 v1.06
XC7K410T	Vivado tools 2012.4 v1.08 or ISE tools 14.2 v1.06		N/A	Vivado tools 2012.4 v1.07 or ISE tools 14.3 v1.06
XC7K420T	Vivado tools 2012.4 v1.08 or ISE tools 14.2 v1.06		N/A	Vivado tools 2012.4 v1.07 or ISE tools 14.3 v1.06
XC7K480T	Vivado tools 2012.4 v1.08 or ISE tools 14.2 v1.06		N/A	Vivado tools 2012.4 v1.07 or ISE tools 14.3 v1.06
XQ7K325T	N/A	Vivado tools 2013.1 v1.04 or ISE tools 14.5 v1.04		Vivado tools 2013.1 v1.04 or ISE tools 14.5 v1.04
XQ7K410T	N/A			

Notes:

- In the software, -2L (0.9V) designs are distinguished from -2L (1.0V) designs via an additional "L" following the device name, e.g., XC7K325TL is the device name for a -2L (0.9V) design and XC7K325T is the part name for a -2L (1.0V) design. For the -2L (0.9V) speed specification, select the Kintex-7 Low Voltage family in the software.
- Blank entries indicate a device and/or speed grade in advance or preliminary status.

Performance Characteristics

This section provides the performance characteristics of some common functions and designs implemented in Kintex-7 devices. The numbers reported here are worst-case values; they have all been fully characterized. These values are subject to the same guidelines as the [AC Switching Characteristics, page 11](#). In each table, the I/O bank type is either High Performance (HP) or High Range (HR).

Table 17: Networking Applications Interface Performances

Description	I/O Bank Type	Speed Grade				Units
		1.0V			0.9V	
		-3	-2/-2L	-1	-2L	
SDR LVDS transmitter (using OSERDES; DATA_WIDTH = 4 to 8)	HR	710	710	625	625	Mb/s
	HP	710	710	625	625	Mb/s
DDR LVDS transmitter (using OSERDES; DATA_WIDTH = 4 to 14)	HR	1250	1250	950	950	Mb/s
	HP	1600	1400	1250	1250	Mb/s
SDR LVDS receiver (SFI-4.1) ⁽¹⁾	HR	710	710	625	625	Mb/s
	HP	710	710	625	625	Mb/s
DDR LVDS receiver (SPI-4.2) ⁽¹⁾	HR	1250	1250	950	950	Mb/s
	HP	1600	1400	1250	1250	Mb/s

Notes:

1. LVDS receivers are typically bounded with certain applications where specific dynamic phase-alignment (DPA) algorithms dominate deterministic performance.

Table 18: Maximum Physical Interface (PHY) Rate for Memory Interfaces IP available with the Memory Interface Generator (FFG and RF Packages)⁽¹⁾⁽²⁾

Memory Standard	I/O Bank Type	V _{CCAUX_IO}	Speed Grade					Units
			1.0V				0.9V	
			-3	-2/-2L	-1	-1M	-2L	
4:1 Memory Controllers								
DDR3	HP	2.0V	1866	1866	1600	1066	1333	Mb/s
	HP	1.8V	1600	1333	1066	800	1066	Mb/s
	HR	N/A	1066	1066	800	800	800	Mb/s
DDR3L	HP	2.0V	1600	1600	1333	1066	1066	Mb/s
	HP	1.8V	1333	1066	800	800	800	Mb/s
	HR	N/A	800	800	667	N/A	667	Mb/s
DDR2	HP	2.0V	800	800	800	667	800	Mb/s
	HP	1.8V	800	800	800	667	800	Mb/s
	HR	N/A	800	800	800	533	800	Mb/s
RLDRAM III	HP	2.0V	800	667	667	550	533	MHz
	HP	1.8V	550	500	450	400	450	MHz
	HR	N/A	N/A					
2:1 Memory Controllers								
DDR3	HP	2.0V	1066	1066	800	667	800	Mb/s
	HP	1.8V	1066	1066	800	667	800	Mb/s
	HR	N/A	1066	1066	800	667	800	Mb/s
DDR3L	HP	2.0V	1066	1066	800	667	800	Mb/s
	HP	1.8V	1066	1066	800	667	800	Mb/s
	HR	N/A	800	800	667	N/A	667	Mb/s
DDR2	HP	2.0V	800	800	800	667	800	Mb/s
	HP	1.8V				667		
	HR	N/A				533		
QDR II+ ⁽³⁾	HP	2.0V	550	500	450	300	450	MHz
	HP	1.8V	500	450	400	300	400	MHz
	HR	N/A						
RLDRAM II	HP	2.0V	533	500	450	400	450	MHz
	HP	1.8V						
	HR	N/A						
LPDDR2	HP	2.0V	667	667	667	533	667	Mb/s
	HP	1.8V	667	667	667	533	667	Mb/s
	HR	N/A	667	667	667	533	667	Mb/s

Notes:

1. V_{REF} tracking is required. For more information, see the *7 Series FPGAs Memory Interface Solutions User Guide* (UG586).
2. When using the internal V_{REF} the maximum data rate is 800 Mb/s (400 MHz).
3. The maximum QDRII+ performance specifications are for burst-length 4 (BL = 4) implementations. Burst length 2 (BL = 2) implementations are limited to 333 MHz for all speed grades and I/O bank types.

Table 19: Maximum Physical Interface (PHY) Rate for Memory Interfaces IP available with the Memory Interface Generator (FBG Packages)⁽¹⁾⁽²⁾

Memory Standard	I/O Bank Type	V _{CCAUX_IO} ⁽³⁾	Speed Grade					Units
			1.0V				0.9V	
			-3	-2/-2L	-1	-1M	-2L	
4:1 Memory Controllers								
DDR3	HP	N/A	1333	1066	800	800	800	Mb/s
	HR	N/A	1066	800	800	800	800	Mb/s
DDR3L	HP	N/A	1066	800	667	667	667	Mb/s
	HR	N/A	800	800	667	N/A	667	Mb/s
DDR2	HP	N/A	800	800	800	667	800	Mb/s
	HR	N/A	800	667	667	533	667	Mb/s
RLDRAM III	HP	N/A	550	500	450	350	450	MHz
	HR	N/A	N/A					
2:1 Memory Controllers								
DDR3	HP	N/A	1066	1066	800	667	800	Mb/s
	HR	N/A	1066	800	800	667	800	Mb/s
DDR3L	HP	N/A	1066	800	667	667	667	Mb/s
	HR	N/A	800	800	667	N/A	667	Mb/s
DDR2	HP	N/A	800	800	800	667	800	Mb/s
	HR	N/A	800	667	667	533	667	Mb/s
QDR II+ ⁽⁴⁾	HP	N/A	550	500	450	300	450	MHz
	HR	N/A	450	400	350	300	350	MHz
RLDRAM II	HP	N/A	533	500	450	400	450	MHz
	HR	N/A						
LPDDR2	HP	N/A	667	667	667	400	667	Mb/s
	HR	N/A	667	667	533	400	533	Mb/s

Notes:

1. V_{REF} tracking is required. For more information, see the *7 Series FPGAs Memory Interface Solutions User Guide* ([UG586](#)).
2. When using the internal V_{REF} the maximum data rate is 800 Mb/s (400 MHz).
3. FBG packages do not have separate V_{CCAUX_IO} supply pins to adjust the pre-driver voltage of the HP I/O banks.
4. The maximum QDRII+ performance specifications are for burst-length 4 (BL = 4) implementations. Burst length 2 (BL = 2) implementations are limited to 333 MHz for all speed grades and I/O bank types.

IOB Pad Input/Output/3-State

Table 20 (3.3V high-range IOB (HR)) and Table 21 (1.8V high-performance IOB (HP)) summarizes the values of standard-specific data input delay adjustments, output delays terminating at pads (based on standard) and 3-state delays.

- T_{IOPI} is described as the delay from IOB pad through the input buffer to the I-pin of an IOB pad. The delay varies depending on the capability of the SelectIO input buffer.
- T_{IOOP} is described as the delay from the O pin to the IOB pad through the output buffer of an IOB pad. The delay varies depending on the capability of the SelectIO output buffer.
- T_{IOTP} is described as the delay from the T pin to the IOB pad through the output buffer of an IOB pad, when 3-state is disabled. The delay varies depending on the SelectIO capability of the output buffer. In HP I/O banks, the internal DCI termination turn-on time is always faster than T_{IOTP} when the DCITERMDISABLE pin is used. In HR I/O banks, the IN_TERM termination turn-on time is always faster than T_{IOTP} when the INTERMDISABLE pin is used.

Table 20: 3.3V IOB High Range (HR) Switching Characteristics

I/O Standard	T_{IOPI}					T_{IOOP}					T_{IOTP}					Units
	Speed Grade					Speed Grade					Speed Grade					
	1.0V				0.9V	1.0V				0.9V	1.0V				0.9V	
	-3	-2/-2L	-1	-1M	-2L	-3	-2/-2L	-1	-1M	-2L	-3	-2/-2L	-1	-1M	-2L	
LVTTL_S4	1.31	1.42	1.64	1.64	1.51	3.77	3.90	4.00	4.00	4.13	3.52	3.67	3.86	3.86	3.85	ns
LVTTL_S8	1.31	1.42	1.64	1.64	1.51	3.50	3.64	3.73	3.73	3.86	3.26	3.40	3.60	3.60	3.58	ns
LVTTL_S12	1.31	1.42	1.64	1.64	1.51	3.49	3.62	3.72	3.72	3.84	3.24	3.39	3.58	3.58	3.56	ns
LVTTL_S16	1.31	1.42	1.64	1.64	1.51	3.03	3.17	3.26	3.26	3.39	2.79	2.93	3.13	3.13	3.11	ns
LVTTL_S24	1.31	1.42	1.64	1.64	1.51	3.25	3.39	3.48	3.48	3.61	3.01	3.15	3.35	3.35	3.33	ns
LVTTL_F4	1.31	1.42	1.64	1.64	1.51	3.22	3.36	3.45	3.45	3.58	2.98	3.12	3.32	3.32	3.30	ns
LVTTL_F8	1.31	1.42	1.64	1.64	1.51	2.71	2.84	2.93	2.93	3.06	2.46	2.61	2.80	2.80	2.78	ns
LVTTL_F12	1.31	1.42	1.64	1.64	1.51	2.69	2.82	2.92	2.92	3.05	2.44	2.59	2.79	2.79	2.77	ns
LVTTL_F16	1.31	1.42	1.64	1.64	1.51	2.57	2.85	3.15	3.15	2.88	2.33	2.61	3.02	3.02	2.60	ns
LVTTL_F24	1.31	1.42	1.64	1.64	1.51	2.41	2.64	2.89	3.04	2.94	2.16	2.41	2.76	2.91	2.66	ns
LVDS_25	0.64	0.68	0.80	0.87	0.83	1.36	1.47	1.55	1.55	1.58	1.11	1.24	1.41	1.41	1.30	ns
MINI_LVDS_25	0.68	0.70	0.79	0.87	0.83	1.36	1.47	1.55	1.55	1.59	1.11	1.24	1.41	1.41	1.31	ns
BLVDS_25	0.65	0.69	0.80	0.85	0.83	1.83	2.02	2.20	2.57	2.16	1.59	1.79	2.07	2.44	1.88	ns
RSDS_25 (point to point)	0.63	0.68	0.79	0.87	0.83	1.36	1.48	1.55	1.55	1.59	1.11	1.24	1.41	1.41	1.31	ns
PPDS_25	0.65	0.69	0.80	0.87	0.83	1.36	1.49	1.58	1.58	1.59	1.11	1.25	1.45	1.45	1.31	ns
TMDS_33	0.72	0.76	0.86	0.90	0.83	1.43	1.54	1.60	1.60	1.70	1.18	1.31	1.47	1.47	1.42	ns
PCI33_3	1.28	1.41	1.65	1.65	1.50	2.71	3.08	3.52	3.52	3.42	2.46	2.84	3.39	3.39	3.14	ns
HSUL_12_S	0.63	0.64	0.71	0.85	0.79	1.77	1.90	2.00	2.00	2.13	1.52	1.67	1.86	1.86	1.85	ns
HSUL_12_F	0.63	0.64	0.71	0.85	0.79	1.26	1.40	1.50	1.50	1.61	1.01	1.16	1.37	1.37	1.33	ns
DIFF_HSUL_12_S	0.58	0.61	0.70	0.84	0.81	1.55	1.68	1.78	1.78	1.92	1.30	1.45	1.65	1.65	1.64	ns
DIFF_HSUL_12_F	0.58	0.61	0.70	0.84	0.81	1.16	1.28	1.35	1.35	1.50	0.92	1.04	1.21	1.21	1.22	ns
MOBILE_DDR_S	0.64	0.66	0.74	0.74	0.89	2.58	2.91	3.31	3.31	1.95	2.33	2.68	3.17	3.17	1.67	ns
MOBILE_DDR_F	0.64	0.66	0.74	0.74	0.89	1.91	2.13	2.36	2.36	1.69	1.66	1.89	2.23	2.23	1.41	ns
DIFF_MOBILE_DDR_S	0.63	0.66	0.75	0.75	0.79	2.51	2.84	3.24	3.24	1.95	2.26	2.61	3.10	3.10	1.67	ns
DIFF_MOBILE_DDR_F	0.63	0.66	0.75	0.75	0.79	1.89	2.11	2.34	2.34	1.72	1.64	1.88	2.21	2.21	1.44	ns
HSTL_I_S	0.61	0.64	0.73	0.84	0.79	1.55	1.69	1.80	1.80	1.91	1.30	1.46	1.67	1.67	1.63	ns
HSTL_II_S	0.61	0.64	0.73	0.84	0.78	1.21	1.34	1.43	1.61	1.70	0.96	1.11	1.30	1.47	1.42	ns
HSTL_I_18_S	0.64	0.67	0.76	0.85	0.79	1.28	1.39	1.45	1.45	1.58	1.04	1.16	1.31	1.32	1.30	ns

Table 20: 3.3V IOB High Range (HR) Switching Characteristics (Cont'd)

I/O Standard	T _{IOPI}					T _{IOOP}					T _{IOTP}					Units
	Speed Grade					Speed Grade					Speed Grade					
	1.0V				0.9V	1.0V				0.9V	1.0V				0.9V	
	-3	-2/-2L	-1	-1M	-2L	-3	-2/-2L	-1	-1M	-2L	-3	-2/-2L	-1	-1M	-2L	
HSTL_II_18_S	0.64	0.67	0.76	0.85	0.79	1.18	1.31	1.40	1.57	1.69	0.93	1.08	1.27	1.44	1.41	ns
DIFF_HSTL_I_S	0.63	0.67	0.77	0.84	0.78	1.42	1.54	1.61	1.78	1.84	1.17	1.31	1.48	1.65	1.56	ns
DIFF_HSTL_II_S	0.63	0.67	0.77	0.84	0.79	1.15	1.24	1.27	1.61	1.78	0.91	1.01	1.14	1.47	1.50	ns
DIFF_HSTL_I_18_S	0.65	0.69	0.78	0.84	0.79	1.27	1.38	1.43	1.45	1.67	1.03	1.14	1.30	1.32	1.39	ns
DIFF_HSTL_II_18_S	0.65	0.69	0.78	0.85	0.81	1.14	1.23	1.26	1.57	1.72	0.90	1.00	1.13	1.44	1.44	ns
HSTL_I_F	0.61	0.64	0.73	0.84	0.79	1.10	1.19	1.23	1.31	1.41	0.85	0.96	1.10	1.18	1.13	ns
HSTL_II_F	0.61	0.64	0.73	0.84	0.78	1.05	1.18	1.28	1.31	1.42	0.80	0.95	1.15	1.18	1.14	ns
HSTL_I_18_F	0.64	0.67	0.76	0.85	0.79	1.05	1.18	1.28	1.36	1.44	0.80	0.95	1.15	1.22	1.16	ns
HSTL_II_18_F	0.64	0.67	0.76	0.85	0.79	1.03	1.14	1.23	1.32	1.42	0.78	0.90	1.10	1.19	1.14	ns
DIFF_HSTL_I_F	0.63	0.67	0.77	0.84	0.78	1.09	1.18	1.22	1.31	1.48	0.84	0.95	1.09	1.18	1.20	ns
DIFF_HSTL_II_F	0.63	0.67	0.77	0.84	0.79	1.02	1.11	1.14	1.31	1.48	0.77	0.88	1.01	1.18	1.20	ns
DIFF_HSTL_I_18_F	0.65	0.69	0.78	0.84	0.79	1.08	1.17	1.21	1.36	1.48	0.83	0.94	1.07	1.22	1.20	ns
DIFF_HSTL_II_18_F	0.65	0.69	0.78	0.85	0.81	1.01	1.10	1.13	1.32	1.48	0.76	0.87	1.00	1.19	1.20	ns
LVC MOS33_S4	1.31	1.40	1.60	1.60	1.54	3.77	3.90	4.00	4.00	4.13	3.52	3.67	3.86	3.86	3.85	ns
LVC MOS33_S8	1.31	1.40	1.60	1.60	1.54	3.49	3.62	3.72	3.72	3.84	3.24	3.39	3.58	3.58	3.56	ns
LVC MOS33_S12	1.31	1.40	1.60	1.60	1.54	3.05	3.18	3.28	3.28	3.41	2.80	2.95	3.15	3.15	3.13	ns
LVC MOS33_S16	1.31	1.40	1.60	1.60	1.54	3.06	3.43	3.88	3.88	3.72	2.81	3.20	3.75	3.75	3.44	ns
LVC MOS33_F4	1.31	1.40	1.60	1.60	1.54	3.22	3.36	3.45	3.45	3.58	2.98	3.12	3.32	3.32	3.30	ns
LVC MOS33_F8	1.31	1.40	1.60	1.60	1.54	2.71	2.84	2.93	2.93	3.06	2.46	2.61	2.80	2.80	2.78	ns
LVC MOS33_F12	1.31	1.40	1.60	1.60	1.54	2.57	2.85	3.15	3.15	2.88	2.33	2.61	3.02	3.02	2.60	ns
LVC MOS33_F16	1.31	1.40	1.60	1.60	1.54	2.44	2.69	2.96	2.96	2.88	2.19	2.45	2.82	2.82	2.60	ns
LVC MOS25_S4	1.08	1.16	1.32	1.35	1.36	3.08	3.22	3.31	3.31	3.44	2.84	2.98	3.18	3.18	3.16	ns
LVC MOS25_S8	1.08	1.16	1.32	1.35	1.36	2.85	2.98	3.07	3.08	3.20	2.60	2.75	2.94	2.94	2.92	ns
LVC MOS25_S12	1.08	1.16	1.32	1.35	1.36	2.44	2.57	2.67	2.67	2.80	2.19	2.34	2.54	2.54	2.52	ns
LVC MOS25_S16	1.08	1.16	1.32	1.35	1.36	2.79	2.92	3.01	3.01	3.14	2.54	2.68	2.88	2.88	2.86	ns
LVC MOS25_F4	1.08	1.16	1.32	1.35	1.36	2.71	2.84	2.93	2.93	3.06	2.46	2.61	2.80	2.80	2.78	ns
LVC MOS25_F8	1.08	1.16	1.32	1.35	1.36	2.14	2.28	2.37	2.37	2.50	1.90	2.04	2.24	2.24	2.22	ns
LVC MOS25_F12	1.08	1.16	1.32	1.35	1.36	2.15	2.29	2.52	2.52	2.48	1.91	2.05	2.38	2.38	2.20	ns
LVC MOS25_F16	1.08	1.16	1.32	1.35	1.36	1.92	2.17	2.45	2.45	2.33	1.67	1.94	2.32	2.32	2.05	ns
LVC MOS18_S4	0.64	0.66	0.74	0.95	0.87	1.55	1.68	1.78	1.78	1.91	1.30	1.45	1.65	1.65	1.63	ns
LVC MOS18_S8	0.64	0.66	0.74	0.95	0.87	2.14	2.28	2.37	2.37	2.50	1.90	2.04	2.24	2.24	2.22	ns
LVC MOS18_S12	0.64	0.66	0.74	0.95	0.87	2.14	2.28	2.37	2.37	2.50	1.90	2.04	2.24	2.24	2.22	ns
LVC MOS18_S16	0.64	0.66	0.74	0.95	0.87	1.49	1.62	1.72	1.72	1.84	1.24	1.39	1.58	1.58	1.56	ns
LVC MOS18_S24	0.64	0.66	0.74	0.95	0.87	1.74	1.92	2.08	2.22	1.92	1.50	1.69	1.95	2.08	1.64	ns
LVC MOS18_F4	0.64	0.66	0.74	0.95	0.87	1.38	1.51	1.61	1.64	1.77	1.13	1.28	1.47	1.50	1.49	ns
LVC MOS18_F8	0.64	0.66	0.74	0.95	0.87	1.64	1.78	1.87	1.87	2.00	1.40	1.54	1.74	1.74	1.72	ns
LVC MOS18_F12	0.64	0.66	0.74	0.95	0.87	1.64	1.78	1.87	1.87	2.00	1.40	1.54	1.74	1.74	1.72	ns
LVC MOS18_F16	0.64	0.66	0.74	0.95	0.87	1.52	1.68	1.81	1.81	1.72	1.28	1.45	1.68	1.68	1.44	ns
LVC MOS18_F24	0.64	0.66	0.74	0.95	0.87	1.34	1.46	1.55	2.09	1.66	1.09	1.23	1.42	1.96	1.38	ns

Table 20: 3.3V IOB High Range (HR) Switching Characteristics (Cont'd)

I/O Standard	T _{IOP1}					T _{IOP}					T _{IOTP}					Units
	Speed Grade					Speed Grade					Speed Grade					
	1.0V				0.9V	1.0V				0.9V	1.0V				0.9V	
	-3	-2/-2L	-1	-1M	-2L	-3	-2/-2L	-1	-1M	-2L	-3	-2/-2L	-1	-1M	-2L	
LVC MOS15_S4	0.66	0.69	0.81	0.93	0.90	1.86	2.00	2.09	2.09	2.22	1.62	1.76	1.96	1.96	1.94	ns
LVC MOS15_S8	0.66	0.69	0.81	0.93	0.90	2.05	2.18	2.28	2.28	2.41	1.80	1.95	2.14	2.15	2.13	ns
LVC MOS15_S12	0.66	0.69	0.81	0.93	0.90	1.83	2.03	2.23	2.23	1.91	1.59	1.80	2.10	2.10	1.63	ns
LVC MOS15_S16	0.66	0.69	0.81	0.93	0.90	1.76	1.95	2.13	2.13	1.91	1.52	1.72	1.99	1.99	1.63	ns
LVC MOS15_F4	0.66	0.69	0.81	0.93	0.90	1.63	1.76	1.86	1.86	1.98	1.38	1.53	1.72	1.72	1.70	ns
LVC MOS15_F8	0.66	0.69	0.81	0.93	0.90	1.79	1.99	2.18	2.18	1.92	1.55	1.76	2.05	2.05	1.64	ns
LVC MOS15_F12	0.66	0.69	0.81	0.93	0.90	1.40	1.54	1.65	1.65	1.67	1.15	1.31	1.52	1.52	1.39	ns
LVC MOS15_F16	0.66	0.69	0.81	0.93	0.90	1.37	1.51	1.61	1.89	1.66	1.13	1.27	1.48	1.75	1.38	ns
LVC MOS12_S4	0.88	0.91	1.00	1.17	1.01	2.53	2.67	2.76	2.76	2.89	2.29	2.43	2.63	2.63	2.61	ns
LVC MOS12_S8	0.88	0.91	1.00	1.17	1.01	2.05	2.18	2.28	2.28	2.41	1.80	1.95	2.14	2.15	2.13	ns
LVC MOS12_S12	0.88	0.91	1.00	1.17	1.01	1.75	1.89	1.98	1.98	2.11	1.51	1.65	1.85	1.85	1.83	ns
LVC MOS12_F4	0.88	0.91	1.00	1.17	1.01	1.94	2.07	2.17	2.17	2.30	1.69	1.84	2.04	2.04	2.02	ns
LVC MOS12_F8	0.88	0.91	1.00	1.17	1.01	1.50	1.64	1.73	1.73	1.86	1.26	1.40	1.60	1.60	1.58	ns
LVC MOS12_F12	0.88	0.91	1.00	1.17	1.01	1.54	1.71	1.87	1.87	1.69	1.29	1.48	1.74	1.74	1.41	ns
SSTL135_S	0.61	0.64	0.73	0.85	0.79	1.27	1.40	1.50	1.53	1.64	1.02	1.17	1.36	1.40	1.36	ns
SSTL15_S	0.61	0.64	0.73	0.73	0.73	1.24	1.37	1.47	1.53	1.59	0.99	1.14	1.33	1.40	1.31	ns
SSTL18_I_S	0.64	0.67	0.76	0.84	0.79	1.59	1.74	1.85	1.85	1.95	1.34	1.50	1.72	1.72	1.67	ns
SSTL18_II_S	0.64	0.67	0.76	0.85	0.78	1.27	1.40	1.50	1.50	1.63	1.02	1.17	1.36	1.36	1.35	ns
DIFF_SSTL135_S	0.59	0.61	0.73	0.85	0.79	1.27	1.40	1.50	1.53	1.64	1.02	1.17	1.36	1.40	1.36	ns
DIFF_SSTL15_S	0.63	0.67	0.77	0.85	0.79	1.24	1.37	1.47	1.53	1.59	0.99	1.14	1.33	1.40	1.31	ns
DIFF_SSTL18_I_S	0.65	0.69	0.78	0.85	0.79	1.50	1.63	1.72	1.82	1.95	1.26	1.40	1.59	1.69	1.67	ns
DIFF_SSTL18_II_S	0.65	0.69	0.78	0.85	0.79	1.13	1.22	1.25	1.50	1.66	0.88	0.99	1.12	1.36	1.38	ns
SSTL135_F	0.61	0.64	0.73	0.85	0.79	1.04	1.17	1.26	1.31	1.42	0.79	0.93	1.13	1.18	1.14	ns
SSTL15_F	0.61	0.64	0.73	0.73	0.73	1.04	1.17	1.26	1.26	1.39	0.79	0.93	1.13	1.13	1.11	ns
SSTL18_I_F	0.64	0.67	0.76	0.84	0.79	1.12	1.22	1.26	1.34	1.44	0.88	0.99	1.13	1.21	1.16	ns
SSTL18_II_F	0.64	0.67	0.76	0.85	0.78	1.05	1.18	1.28	1.32	1.42	0.80	0.95	1.15	1.19	1.14	ns
DIFF_SSTL135_F	0.59	0.61	0.73	0.85	0.79	1.04	1.17	1.26	1.31	1.42	0.79	0.93	1.13	1.18	1.14	ns
DIFF_SSTL15_F	0.63	0.67	0.77	0.85	0.79	1.04	1.17	1.26	1.26	1.39	0.79	0.93	1.13	1.13	1.11	ns
DIFF_SSTL18_I_F	0.65	0.69	0.78	0.85	0.79	1.10	1.19	1.23	1.34	1.52	0.85	0.96	1.10	1.21	1.24	ns
DIFF_SSTL18_II_F	0.65	0.69	0.78	0.85	0.79	1.02	1.10	1.14	1.32	1.50	0.77	0.87	1.00	1.19	1.22	ns

Table 21: 1.8V IOB High Performance (HP) Switching Characteristics

I/O Standard	T _{IOPI}					T _{IOOP}					T _{IOTP}					Units
	Speed Grade					Speed Grade					Speed Grade					
	1.0V				0.9V	1.0V				0.9V	1.0V				0.9V	
	-3	-2/-2L	-1	-1M	-2L	-3	-2/-2L	-1	-1M	-2L	-3	-2/-2L	-1	-1M	-2L	
LVDS	0.75	0.79	0.92	0.96	0.89	1.05	1.17	1.24	1.26	1.43	0.88	1.01	1.08	1.10	1.32	ns
HSUL_12_S	0.69	0.72	0.82	0.98	0.95	1.65	1.84	2.05	2.05	1.80	1.48	1.68	1.89	1.89	1.70	ns
HSUL_12_F	0.69	0.72	0.82	0.98	0.95	1.39	1.54	1.68	1.68	1.49	1.22	1.38	1.52	1.52	1.39	ns
DIFF_HSUL_12_S	0.69	0.72	0.82	0.98	0.92	1.65	1.84	2.05	2.05	1.47	1.48	1.68	1.89	1.89	1.37	ns
DIFF_HSUL_12_F	0.69	0.72	0.82	0.98	0.92	1.39	1.54	1.68	1.68	1.35	1.22	1.38	1.52	1.52	1.24	ns
DIFF_HSUL_12_DCI_S	0.69	0.72	0.82	0.82	0.92	1.78	1.91	2.05	2.05	1.46	1.61	1.76	1.89	1.89	1.35	ns
DIFF_HSUL_12_DCI_F	0.69	0.72	0.82	0.82	0.92	1.56	1.67	1.76	1.76	1.35	1.39	1.51	1.60	1.60	1.24	ns
HSTL_I_S	0.68	0.72	0.82	0.90	0.84	1.15	1.28	1.38	1.38	1.46	0.98	1.12	1.22	1.22	1.35	ns
HSTL_II_S	0.68	0.72	0.82	0.90	0.84	1.05	1.17	1.26	1.27	1.44	0.88	1.01	1.10	1.11	1.34	ns
HSTL_I_18_S	0.70	0.72	0.82	0.95	0.86	1.12	1.24	1.34	1.34	1.41	0.95	1.08	1.18	1.18	1.31	ns
HSTL_II_18_S	0.70	0.72	0.82	0.90	0.86	1.06	1.18	1.26	1.27	1.44	0.89	1.02	1.10	1.11	1.34	ns
HSTL_I_12_S	0.68	0.72	0.82	0.96	0.94	1.14	1.27	1.37	1.37	1.43	0.97	1.11	1.21	1.21	1.32	ns
HSTL_I_DCI_S	0.68	0.72	0.82	0.90	0.78	1.11	1.23	1.33	1.33	1.36	0.94	1.07	1.17	1.17	1.26	ns
HSTL_II_DCI_S	0.68	0.72	0.82	0.85	0.78	1.05	1.17	1.26	1.26	1.33	0.88	1.01	1.10	1.10	1.23	ns
HSTL_II_T_DCI_S	0.70	0.72	0.82	0.82	0.76	1.15	1.28	1.38	1.38	1.40	0.98	1.12	1.22	1.22	1.29	ns
HSTL_I_DCI_18_S	0.70	0.72	0.82	0.90	0.76	1.11	1.23	1.33	1.33	1.36	0.94	1.07	1.17	1.17	1.26	ns
HSTL_II_DCI_18_S	0.70	0.72	0.82	0.82	0.76	1.05	1.16	1.24	1.24	1.32	0.88	1.00	1.08	1.08	1.21	ns
HSTL_II_T_DCI_18_S	0.70	0.72	0.82	0.84	0.76	1.11	1.23	1.33	1.34	1.36	0.94	1.07	1.17	1.18	1.26	ns
DIFF_HSTL_I_S	0.75	0.79	0.92	1.02	0.89	1.15	1.28	1.38	1.38	1.47	0.98	1.12	1.22	1.22	1.37	ns
DIFF_HSTL_II_S	0.75	0.79	0.92	1.02	0.89	1.05	1.17	1.26	1.32	1.47	0.88	1.01	1.10	1.16	1.37	ns
DIFF_HSTL_I_DCI_S	0.75	0.79	0.92	0.92	0.76	1.15	1.28	1.38	1.38	1.47	0.98	1.12	1.22	1.22	1.37	ns
DIFF_HSTL_II_DCI_S	0.75	0.79	0.92	0.92	0.76	1.05	1.17	1.26	1.26	1.40	0.88	1.01	1.10	1.10	1.29	ns
DIFF_HSTL_I_18_S	0.75	0.79	0.92	0.98	0.89	1.12	1.24	1.34	1.34	1.46	0.95	1.08	1.18	1.18	1.35	ns
DIFF_HSTL_II_18_S	0.75	0.79	0.92	0.99	0.89	1.06	1.18	1.26	1.32	1.47	0.89	1.02	1.10	1.16	1.37	ns
DIFF_HSTL_I_DCI_18_S	0.75	0.79	0.92	0.92	0.75	1.11	1.23	1.33	1.33	1.46	0.94	1.07	1.17	1.17	1.35	ns
DIFF_HSTL_II_DCI_18_S	0.75	0.79	0.92	0.93	0.75	1.05	1.16	1.24	1.26	1.41	0.88	1.00	1.08	1.10	1.31	ns
DIFF_HSTL_II_T_DCI_18_S	0.75	0.79	0.92	0.92	0.76	1.11	1.23	1.33	1.33	1.46	0.94	1.07	1.17	1.17	1.35	ns
HSTL_I_F	0.68	0.72	0.82	0.90	0.84	1.02	1.14	1.22	1.22	1.26	0.85	0.98	1.06	1.06	1.15	ns
HSTL_II_F	0.68	0.72	0.82	0.90	0.84	0.97	1.08	1.15	1.15	1.29	0.80	0.92	0.99	0.99	1.18	ns
HSTL_I_18_F	0.70	0.72	0.82	0.95	0.86	1.04	1.16	1.24	1.24	1.32	0.87	1.00	1.08	1.08	1.21	ns
HSTL_II_18_F	0.70	0.72	0.82	0.90	0.86	0.98	1.09	1.16	1.20	1.35	0.81	0.94	1.00	1.03	1.24	ns
HSTL_I_12_F	0.68	0.72	0.82	0.96	0.94	1.02	1.13	1.21	1.21	1.26	0.85	0.97	1.05	1.05	1.15	ns
HSTL_I_DCI_F	0.68	0.72	0.82	0.90	0.78	1.04	1.16	1.24	1.24	1.30	0.87	1.00	1.08	1.08	1.20	ns
HSTL_II_DCI_F	0.68	0.72	0.82	0.85	0.78	0.97	1.08	1.15	1.15	1.22	0.80	0.92	0.99	0.99	1.12	ns
HSTL_II_T_DCI_F	0.70	0.72	0.82	0.82	0.76	1.02	1.14	1.22	1.22	1.26	0.85	0.98	1.06	1.06	1.15	ns
HSTL_I_DCI_18_F	0.70	0.72	0.82	0.90	0.76	1.04	1.16	1.24	1.24	1.30	0.87	1.00	1.08	1.08	1.20	ns
HSTL_II_DCI_18_F	0.70	0.72	0.82	0.82	0.76	0.98	1.09	1.16	1.16	1.27	0.81	0.93	1.00	1.00	1.17	ns

Table 21: 1.8V IOB High Performance (HP) Switching Characteristics (Cont'd)

I/O Standard	T _{IOPI}					T _{IOOP}					T _{IOTP}					Units
	Speed Grade					Speed Grade					Speed Grade					
	1.0V				0.9V	1.0V				0.9V	1.0V				0.9V	
	-3	-2/-2L	-1	-1M	-2L	-3	-2/-2L	-1	-1M	-2L	-3	-2/-2L	-1	-1M	-2L	
HSTL_II_T_DCI_18_F	0.70	0.72	0.82	0.84	0.76	1.04	1.16	1.24	1.24	1.30	0.87	1.00	1.08	1.08	1.20	ns
DIFF_HSTL_I_F	0.75	0.79	0.92	1.02	0.89	1.02	1.14	1.22	1.22	1.35	0.85	0.98	1.06	1.06	1.24	ns
DIFF_HSTL_II_F	0.75	0.79	0.92	1.02	0.89	0.97	1.08	1.15	1.20	1.35	0.80	0.92	0.99	1.03	1.24	ns
DIFF_HSTL_I_DCI_F	0.75	0.79	0.92	0.92	0.76	1.02	1.14	1.22	1.22	1.35	0.85	0.98	1.06	1.06	1.24	ns
DIFF_HSTL_II_DCI_F	0.75	0.79	0.92	0.92	0.76	0.97	1.08	1.15	1.15	1.30	0.80	0.92	0.99	0.99	1.20	ns
DIFF_HSTL_I_18_F	0.75	0.79	0.92	0.98	0.89	1.04	1.16	1.24	1.24	1.38	0.87	1.00	1.08	1.08	1.28	ns
DIFF_HSTL_II_18_F	0.75	0.79	0.92	0.99	0.89	0.98	1.09	1.16	1.24	1.40	0.81	0.94	1.00	1.08	1.29	ns
DIFF_HSTL_I_DCI_18_F	0.75	0.79	0.92	0.92	0.75	1.04	1.16	1.24	1.24	1.38	0.87	1.00	1.08	1.08	1.28	ns
DIFF_HSTL_II_DCI_18_F	0.75	0.79	0.92	0.93	0.75	0.98	1.09	1.16	1.18	1.33	0.81	0.93	1.00	1.02	1.23	ns
DIFF_HSTL_II_T_DCI_18_F	0.75	0.79	0.92	0.92	0.76	1.04	1.16	1.24	1.24	1.38	0.87	1.00	1.08	1.08	1.28	ns
LVC MOS18_S2	0.47	0.50	0.60	0.90	0.87	3.95	4.28	4.85	4.85	3.40	3.78	4.13	4.69	4.69	3.29	ns
LVC MOS18_S4	0.47	0.50	0.60	0.90	0.87	2.67	2.98	3.43	3.43	2.69	2.50	2.82	3.27	3.27	2.59	ns
LVC MOS18_S6	0.47	0.50	0.60	0.90	0.87	2.14	2.38	2.72	2.72	2.18	1.97	2.22	2.56	2.56	2.07	ns
LVC MOS18_S8	0.47	0.50	0.60	0.90	0.87	1.98	2.21	2.52	2.52	2.02	1.81	2.05	2.36	2.36	1.92	ns
LVC MOS18_S12	0.47	0.50	0.60	0.90	0.87	1.70	1.91	2.17	2.17	1.85	1.53	1.75	2.01	2.01	1.74	ns
LVC MOS18_S16	0.47	0.50	0.60	0.90	0.87	1.57	1.75	1.97	1.97	1.76	1.40	1.59	1.81	1.81	1.65	ns
LVC MOS18_F2	0.47	0.50	0.60	0.90	0.87	3.50	3.87	4.48	4.48	2.85	3.33	3.71	4.32	4.32	2.74	ns
LVC MOS18_F4	0.47	0.50	0.60	0.90	0.87	2.23	2.50	2.87	2.87	2.26	2.06	2.34	2.71	2.71	2.15	ns
LVC MOS18_F6	0.47	0.50	0.60	0.90	0.87	1.80	2.00	2.26	2.26	1.52	1.63	1.84	2.09	2.09	1.42	ns
LVC MOS18_F8	0.47	0.50	0.60	0.90	0.87	1.46	1.72	2.04	2.04	1.51	1.29	1.56	1.88	1.88	1.40	ns
LVC MOS18_F12	0.47	0.50	0.60	0.90	0.87	1.26	1.40	1.53	1.53	1.46	1.09	1.24	1.37	1.37	1.35	ns
LVC MOS18_F16	0.47	0.50	0.60	0.90	0.87	1.19	1.33	1.44	1.66	1.46	1.02	1.17	1.28	1.50	1.35	ns
LVC MOS15_S2	0.59	0.62	0.73	0.88	0.86	3.55	3.89	4.45	4.45	3.11	3.38	3.73	4.29	4.29	3.01	ns
LVC MOS15_S4	0.59	0.62	0.73	0.88	0.86	2.45	2.70	3.06	3.06	2.46	2.28	2.54	2.90	2.90	2.35	ns
LVC MOS15_S6	0.59	0.62	0.73	0.88	0.86	2.24	2.51	2.88	2.88	2.33	2.07	2.35	2.72	2.72	2.23	ns
LVC MOS15_S8	0.59	0.62	0.73	0.88	0.86	1.91	2.16	2.49	2.49	2.05	1.74	2.00	2.32	2.32	1.95	ns
LVC MOS15_S12	0.59	0.62	0.73	0.88	0.86	1.77	1.98	2.23	2.23	1.97	1.60	1.82	2.07	2.07	1.87	ns
LVC MOS15_S16	0.59	0.62	0.73	0.88	0.86	1.62	1.81	2.02	2.02	1.85	1.45	1.65	1.86	1.86	1.74	ns
LVC MOS15_F2	0.59	0.62	0.73	0.88	0.86	3.38	3.69	4.18	4.18	2.74	3.21	3.53	4.02	4.02	2.64	ns
LVC MOS15_F4	0.59	0.62	0.73	0.88	0.86	2.04	2.21	2.44	2.44	1.72	1.87	2.06	2.27	2.27	1.62	ns
LVC MOS15_F6	0.59	0.62	0.73	0.88	0.86	1.47	1.74	2.09	2.09	1.49	1.30	1.58	1.93	1.93	1.39	ns
LVC MOS15_F8	0.59	0.62	0.73	0.88	0.86	1.31	1.46	1.61	1.61	1.47	1.14	1.30	1.45	1.45	1.37	ns
LVC MOS15_F12	0.59	0.62	0.73	0.88	0.86	1.21	1.34	1.45	1.45	1.44	1.04	1.18	1.29	1.29	1.34	ns
LVC MOS15_F16	0.59	0.62	0.73	0.88	0.86	1.18	1.31	1.41	1.68	1.41	1.01	1.15	1.25	1.52	1.31	ns
LVC MOS12_S2	0.64	0.67	0.78	1.04	0.95	3.38	3.80	4.48	4.48	3.27	3.21	3.64	4.31	4.31	3.17	ns
LVC MOS12_S4	0.64	0.67	0.78	1.04	0.95	2.62	2.94	3.43	3.43	2.76	2.45	2.78	3.27	3.27	2.65	ns
LVC MOS12_S6	0.64	0.67	0.78	1.04	0.95	2.05	2.33	2.72	2.72	2.24	1.88	2.17	2.56	2.56	2.14	ns

Table 21: 1.8V IOB High Performance (HP) Switching Characteristics (Cont'd)

I/O Standard	T _{IOPI}					T _{IOOP}					T _{IOTP}					Units
	Speed Grade					Speed Grade					Speed Grade					
	1.0V				0.9V	1.0V				0.9V	1.0V				0.9V	
	-3	-2/-2L	-1	-1M	-2L	-3	-2/-2L	-1	-1M	-2L	-3	-2/-2L	-1	-1M	-2L	
LVCN0512_S8	0.64	0.67	0.78	1.04	0.95	1.94	2.18	2.51	2.51	2.16	1.77	2.02	2.34	2.34	2.06	ns
LVCN0512_F2	0.64	0.67	0.78	1.04	0.95	2.84	3.15	3.62	3.62	2.47	2.67	2.99	3.46	3.46	2.37	ns
LVCN0512_F4	0.64	0.67	0.78	1.04	0.95	1.97	2.18	2.44	2.44	1.69	1.80	2.02	2.28	2.28	1.59	ns
LVCN0512_F6	0.64	0.67	0.78	1.04	0.95	1.33	1.51	1.70	1.70	1.43	1.16	1.35	1.54	1.54	1.32	ns
LVCN0512_F8	0.64	0.67	0.78	1.04	0.95	1.27	1.42	1.55	1.55	1.41	1.10	1.26	1.39	1.39	1.31	ns
LVDCI_18	0.47	0.50	0.60	0.87	0.86	1.99	2.15	2.35	2.35	2.44	1.82	1.99	2.19	2.19	2.34	ns
LVDCI_15	0.59	0.62	0.73	0.92	0.87	1.98	2.23	2.58	2.58	2.40	1.81	2.07	2.41	2.41	2.29	ns
LVDCI_DV2_18	0.47	0.50	0.60	0.88	0.87	1.99	2.15	2.34	2.34	1.86	1.82	1.99	2.18	2.18	1.76	ns
LVDCI_DV2_15	0.59	0.62	0.73	0.88	0.87	1.98	2.23	2.58	2.58	1.83	1.81	2.07	2.41	2.41	1.73	ns
HSLVDCI_18	0.68	0.72	0.82	0.90	0.86	1.99	2.15	2.35	2.35	2.43	1.82	1.99	2.19	2.19	2.32	ns
HSLVDCI_15	0.68	0.72	0.82	0.93	0.84	1.98	2.23	2.58	2.58	2.27	1.81	2.07	2.41	2.41	2.17	ns
SSTL18_I_S	0.68	0.72	0.82	0.95	0.86	1.02	1.15	1.24	1.24	1.41	0.85	0.99	1.08	1.08	1.31	ns
SSTL18_IL_S	0.68	0.72	0.82	1.01	0.87	1.17	1.29	1.37	1.38	1.55	1.00	1.13	1.21	1.22	1.45	ns
SSTL18_I_DCI_S	0.68	0.72	0.82	0.87	0.76	0.92	1.06	1.17	1.18	1.32	0.75	0.90	1.01	1.02	1.21	ns
SSTL18_IL_DCI_S	0.68	0.72	0.82	0.82	0.78	0.88	0.98	1.08	1.12	1.26	0.71	0.83	0.92	0.96	1.15	ns
SSTL18_IL_T_DCI_S	0.68	0.72	0.82	0.98	0.78	0.92	1.06	1.17	1.18	1.32	0.75	0.90	1.01	1.02	1.21	ns
SSTL15_S	0.68	0.72	0.82	0.82	0.81	0.94	1.06	1.15	1.16	1.32	0.77	0.91	0.99	1.00	1.21	ns
SSTL15_DCI_S	0.68	0.72	0.82	0.90	0.78	0.94	1.06	1.15	1.16	1.30	0.77	0.90	0.99	1.00	1.20	ns
SSTL15_T_DCI_S	0.68	0.72	0.82	0.87	0.80	0.94	1.06	1.15	1.15	1.30	0.77	0.90	0.99	0.99	1.20	ns
SSTL135_S	0.69	0.72	0.82	0.93	0.89	0.97	1.10	1.19	1.20	1.35	0.80	0.94	1.03	1.03	1.24	ns
SSTL135_DCI_S	0.69	0.72	0.82	0.85	0.84	0.97	1.09	1.19	1.20	1.33	0.80	0.93	1.03	1.03	1.23	ns
SSTL135_T_DCI_S	0.69	0.72	0.82	0.93	0.84	0.97	1.09	1.19	1.20	1.33	0.80	0.93	1.03	1.03	1.23	ns
SSTL12_S	0.69	0.72	0.82	1.02	0.95	0.96	1.09	1.18	1.18	1.33	0.79	0.93	1.02	1.02	1.23	ns
SSTL12_DCI_S	0.69	0.72	0.82	0.90	0.91	1.03	1.17	1.27	1.27	1.33	0.86	1.01	1.11	1.11	1.23	ns
SSTL12_T_DCI_S	0.69	0.72	0.82	0.88	0.91	1.03	1.17	1.27	1.27	1.33	0.86	1.01	1.11	1.11	1.23	ns
DIFF_SSTL18_I_S	0.75	0.79	0.92	0.99	0.89	1.02	1.15	1.24	1.29	1.43	0.85	0.99	1.08	1.13	1.32	ns
DIFF_SSTL18_IL_S	0.75	0.79	0.92	0.93	0.89	1.17	1.29	1.37	1.40	1.55	1.00	1.13	1.21	1.24	1.45	ns
DIFF_SSTL18_I_DCI_S	0.75	0.79	0.92	0.92	0.76	0.92	1.06	1.17	1.24	1.40	0.75	0.90	1.01	1.08	1.29	ns
DIFF_SSTL18_IL_DCI_S	0.75	0.79	0.92	0.96	0.75	0.88	0.98	1.08	1.18	1.33	0.71	0.83	0.92	1.02	1.23	ns
DIFF_SSTL18_IL_T_DCI_S	0.75	0.79	0.92	0.92	0.76	0.92	1.06	1.17	1.24	1.40	0.75	0.90	1.01	1.08	1.29	ns
DIFF_SSTL15_S	0.68	0.72	0.82	0.99	0.89	0.94	1.06	1.15	1.16	1.32	0.77	0.91	0.99	1.00	1.21	ns
DIFF_SSTL15_DCI_S	0.68	0.72	0.82	0.96	0.75	0.94	1.06	1.15	1.16	1.30	0.77	0.90	0.99	1.00	1.20	ns
DIFF_SSTL15_T_DCI_S	0.68	0.72	0.82	0.88	0.76	0.94	1.06	1.15	1.23	1.38	0.77	0.90	0.99	1.07	1.28	ns
DIFF_SSTL135_S	0.69	0.72	0.82	1.09	0.91	0.97	1.10	1.19	1.20	1.35	0.80	0.94	1.03	1.03	1.24	ns
DIFF_SSTL135_DCI_S	0.69	0.72	0.82	0.90	0.76	0.97	1.09	1.19	1.20	1.33	0.80	0.93	1.03	1.03	1.23	ns
DIFF_SSTL135_T_DCI_S	0.69	0.72	0.82	0.84	0.76	0.97	1.09	1.19	1.27	1.43	0.80	0.93	1.03	1.11	1.32	ns
DIFF_SSTL12_S	0.69	0.72	0.82	0.96	0.91	0.96	1.09	1.18	1.18	1.33	0.79	0.93	1.02	1.02	1.23	ns

Table 21: 1.8V IOB High Performance (HP) Switching Characteristics (Cont'd)

I/O Standard	T _{IOPI}					T _{IOOP}					T _{IOTP}					Units
	Speed Grade					Speed Grade					Speed Grade					
	1.0V				0.9V	1.0V				0.9V	1.0V				0.9V	
	-3	-2/-2L	-1	-1M	-2L	-3	-2/-2L	-1	-1M	-2L	-3	-2/-2L	-1	-1M	-2L	
DIFF_SSTL12_DCI_S	0.69	0.72	0.82	0.87	0.78	1.03	1.17	1.27	1.27	1.33	0.86	1.01	1.11	1.11	1.23	ns
DIFF_SSTL12_T_DCI_S	0.69	0.72	0.82	0.96	0.80	1.03	1.17	1.27	1.27	1.41	0.86	1.01	1.11	1.11	1.31	ns
SSTL18_I_F	0.68	0.72	0.82	0.95	0.86	0.94	1.06	1.15	1.15	1.32	0.77	0.91	0.99	0.99	1.21	ns
SSTL18_IL_F	0.68	0.72	0.82	1.01	0.87	0.97	1.09	1.16	1.21	1.36	0.80	0.93	1.00	1.05	1.26	ns
SSTL18_I_DCI_F	0.68	0.72	0.82	0.87	0.76	0.89	1.02	1.10	1.15	1.30	0.72	0.86	0.94	0.99	1.20	ns
SSTL18_IL_DCI_F	0.68	0.72	0.82	0.82	0.78	0.89	1.02	1.10	1.10	1.24	0.72	0.86	0.94	0.94	1.14	ns
SSTL18_IL_T_DCI_F	0.68	0.72	0.82	0.98	0.78	0.89	1.02	1.10	1.15	1.27	0.72	0.86	0.94	0.99	1.17	ns
SSTL15_F	0.68	0.72	0.82	0.82	0.81	0.89	1.01	1.09	1.09	1.24	0.72	0.85	0.93	0.93	1.14	ns
SSTL15_DCI_F	0.68	0.72	0.82	0.90	0.78	0.89	1.01	1.09	1.12	1.27	0.72	0.85	0.93	0.96	1.17	ns
SSTL15_T_DCI_F	0.68	0.72	0.82	0.87	0.80	0.89	1.01	1.09	1.12	1.27	0.72	0.85	0.93	0.96	1.17	ns
SSTL135_F	0.69	0.72	0.82	0.93	0.89	0.88	1.00	1.08	1.12	1.27	0.71	0.85	0.92	0.96	1.17	ns
SSTL135_DCI_F	0.69	0.72	0.82	0.85	0.84	0.89	1.00	1.08	1.12	1.27	0.72	0.85	0.92	0.96	1.17	ns
SSTL135_T_DCI_F	0.69	0.72	0.82	0.93	0.84	0.89	1.00	1.08	1.12	1.27	0.72	0.85	0.92	0.96	1.17	ns
SSTL12_F	0.69	0.72	0.82	1.02	0.95	0.88	1.00	1.08	1.12	1.26	0.71	0.84	0.92	0.96	1.15	ns
SSTL12_DCI_F	0.69	0.72	0.82	0.90	0.91	0.91	1.03	1.11	1.11	1.24	0.74	0.88	0.95	0.95	1.14	ns
SSTL12_T_DCI_F	0.69	0.72	0.82	0.88	0.91	0.91	1.03	1.11	1.12	1.26	0.74	0.88	0.95	0.96	1.15	ns
DIFF_SSTL18_I_F	0.75	0.79	0.92	0.99	0.89	0.94	1.06	1.15	1.23	1.38	0.77	0.91	0.99	1.07	1.28	ns
DIFF_SSTL18_IL_F	0.75	0.79	0.92	0.93	0.89	0.97	1.09	1.16	1.24	1.40	0.80	0.93	1.00	1.08	1.29	ns
DIFF_SSTL18_I_DCI_F	0.75	0.79	0.92	0.92	0.76	0.89	1.02	1.10	1.23	1.36	0.72	0.86	0.94	1.07	1.26	ns
DIFF_SSTL18_IL_DCI_F	0.75	0.79	0.92	0.96	0.75	0.89	1.02	1.10	1.16	1.32	0.72	0.86	0.94	1.00	1.21	ns
DIFF_SSTL18_IL_T_DCI_F	0.75	0.79	0.92	0.92	0.76	0.89	1.02	1.10	1.24	1.38	0.72	0.86	0.94	1.08	1.28	ns
DIFF_SSTL15_F	0.68	0.72	0.82	0.99	0.89	0.89	1.01	1.09	1.09	1.24	0.72	0.85	0.93	0.93	1.14	ns
DIFF_SSTL15_DCI_F	0.68	0.72	0.82	0.96	0.75	0.89	1.01	1.09	1.12	1.27	0.72	0.85	0.93	0.96	1.17	ns
DIFF_SSTL15_T_DCI_F	0.68	0.72	0.82	0.88	0.76	0.89	1.01	1.09	1.20	1.35	0.72	0.85	0.93	1.03	1.24	ns
DIFF_SSTL135_F	0.69	0.72	0.82	1.09	0.91	0.88	1.00	1.08	1.12	1.27	0.71	0.85	0.92	0.96	1.17	ns
DIFF_SSTL135_DCI_F	0.69	0.72	0.82	0.90	0.76	0.89	1.00	1.08	1.12	1.27	0.72	0.85	0.92	0.96	1.17	ns
DIFF_SSTL135_T_DCI_F	0.69	0.72	0.82	0.84	0.76	0.89	1.00	1.08	1.20	1.35	0.72	0.85	0.92	1.03	1.24	ns
DIFF_SSTL12_F	0.69	0.72	0.82	0.96	0.91	0.88	1.00	1.08	1.12	1.26	0.71	0.84	0.92	0.96	1.15	ns
DIFF_SSTL12_DCI_F	0.69	0.72	0.82	0.87	0.78	0.91	1.03	1.11	1.11	1.24	0.74	0.88	0.95	0.95	1.14	ns
DIFF_SSTL12_T_DCI_F	0.69	0.72	0.82	0.96	0.80	0.91	1.03	1.11	1.18	1.33	0.74	0.88	0.95	1.02	1.23	ns

Table 22 specifies the values of T_{IOTPHZ} and $T_{IOIBUFDISABLE}$. T_{IOTPHZ} is described as the delay from the T pin to the IOB pad through the output buffer of an IOB pad, when 3-state is enabled (i.e., a high impedance state). $T_{IOIBUFDISABLE}$ is described as the IOB delay from IBUFDISABLE to O output. In HP I/O banks, the internal DCI termination turn-off time is always faster than T_{IOTPHZ} when the DCITERMDISABLE pin is used. In HR I/O banks, the internal IN_TERM termination turn-off time is always faster than T_{IOTPHZ} when the INTERMDISABLE pin is used.

Table 22: IOB 3-state Output Switching Characteristics

Symbol	Description	Speed Grade					Units
		1.0V				0.9V	
		-3	-2/-2L	-1	-1M	-2L	
T_{IOTPHZ}	T input to pad high-impedance	0.76	0.86	0.99	0.99	0.62	ns
$T_{IOIBUFDISABLE_HR}$	IBUF turn-on time from IBUFDISABLE to O output for HR I/O banks	1.72	1.89	2.14	2.14	2.17	ns
$T_{IOIBUFDISABLE_HP}$	IBUF turn-on time from IBUFDISABLE to O output for HP I/O banks	1.31	1.46	1.76	1.76	1.86	ns

Input/Output Logic Switching Characteristics

Table 23: ILOGIC Switching Characteristics

Symbol	Description	Speed Grade					Units
		1.0V				0.9V	
		-3	-2/-2L	-1	-1M	-2L	
Setup/Hold							
T_{ICE1CK}/T_{ICKCE1}	CE1 pin Setup/Hold with respect to CLK	0.42/0.00	0.48/0.00	0.67/0.00	0.67/0.00	0.56/-0.16	ns
T_{ISRCK}/T_{ICKSR}	SR pin Setup/Hold with respect to CLK	0.53/0.01	0.61/0.01	0.99/0.01	0.99/0.01	0.88/-0.30	ns
$T_{IDOCKE2}/T_{IOCKDE2}$	D pin Setup/Hold with respect to CLK without Delay (HP I/O banks only)	0.01/0.27	0.01/0.29	0.01/0.34	0.01/0.34	0.01/0.41	ns
$T_{IDOCKDE2}/T_{IOCKDDE2}$	DDL pin Setup/Hold with respect to CLK (using IDELAY) (HP I/O banks only)	0.01/0.27	0.02/0.29	0.02/0.34	0.02/0.34	0.01/0.41	ns
$T_{IDOCKE3}/T_{IOCKDE3}$	D pin Setup/Hold with respect to CLK without Delay (HR I/O banks only)	0.01/0.27	0.01/0.29	0.01/0.34	0.01/0.34	0.01/0.41	ns
$T_{IDOCKDE3}/T_{IOCKDDE3}$	DDL pin Setup/Hold with respect to CLK (using IDELAY) (HR I/O banks only)	0.01/0.27	0.02/0.29	0.02/0.34	0.02/0.34	0.01/0.41	ns
Combinatorial							
T_{IDIE2}	D pin to O pin propagation delay, no Delay (HP I/O banks only)	0.09	0.10	0.12	0.12	0.14	ns
T_{IDIDE2}	DDL pin to O pin propagation delay (using IDELAY) (HP I/O banks only)	0.10	0.11	0.13	0.13	0.15	ns
T_{IDIE3}	D pin to O pin propagation delay, no Delay (HR I/O banks only)	0.09	0.10	0.12	0.12	0.14	ns
T_{IDIDE3}	DDL pin to O pin propagation delay (using IDELAY) (HR I/O banks only)	0.10	0.11	0.13	0.13	0.15	ns
Sequential Delays							
T_{IDLOE2}	D pin to Q1 pin using flip-flop as a latch without Delay (HP I/O banks only)	0.36	0.39	0.45	0.45	0.54	ns
T_{IDLDE2}	DDL pin to Q1 pin using flip-flop as a latch (using IDELAY) (HP I/O banks only)	0.36	0.39	0.45	0.45	0.55	ns
T_{IDLOE3}	D pin to Q1 pin using flip-flop as a latch without Delay (HR I/O banks only)	0.36	0.39	0.45	0.45	0.54	ns
T_{IDLDE3}	DDL pin to Q1 pin using flip-flop as a latch (using IDELAY) (HR I/O banks only)	0.36	0.39	0.45	0.45	0.55	ns
T_{ICKQ}	CLK to Q outputs	0.47	0.50	0.58	0.58	0.71	ns
$T_{RQ_ILOGICE2}$	SR pin to OQ/TQ out (HP I/O banks only)	0.84	0.94	1.16	1.16	1.32	ns
$T_{GSRQ_ILOGICE2}$	Global Set/Reset to Q outputs (HP I/O banks only)	7.60	7.60	10.51	10.51	11.39	ns
$T_{RQ_ILOGICE3}$	SR pin to OQ/TQ out (HR I/O banks only)	0.84	0.94	1.16	1.16	1.32	ns
$T_{GSRQ_ILOGICE3}$	Global Set/Reset to Q outputs (HR I/O banks only)	7.60	7.60	10.51	10.51	11.39	ns
Set/Reset							
$T_{RPW_ILOGICE2}$	Minimum Pulse Width, SR inputs (HP I/O banks only)	0.54	0.63	0.63	0.63	0.68	ns, Min
$T_{RPW_ILOGICE3}$	Minimum Pulse Width, SR inputs (HR I/O banks only)	0.54	0.63	0.63	0.63	0.68	ns, Min

Table 24: OLOGIC Switching Characteristics

Symbol	Description	Speed Grade					Units
		1.0V				0.9V	
		-3	-2/-2L	-1	-1M	-2L	
Setup/Hold							
T_{ODCK}/T_{OCKD}	D1/D2 pins Setup/Hold with respect to CLK	0.45/-0.13	0.50/-0.13	0.58/-0.13	0.58/-0.13	0.79/-0.18	ns
T_{OOCECK}/T_{OCKOCE}	OCE pin Setup/Hold with respect to CLK	0.28/0.03	0.29/0.03	0.45/0.03	0.45/0.03	0.35/-0.10	ns
T_{OSRCK}/T_{OCKSR}	SR pin Setup/Hold with respect to CLK	0.32/0.18	0.38/0.18	0.70/0.18	0.70/0.18	0.62/-0.04	ns
T_{OTCK}/T_{OCKT}	T1/T2 pins Setup/Hold with respect to CLK	0.49/-0.16	0.56/-0.16	0.68/-0.16	0.68/-0.13	0.67/-0.18	ns
T_{OTCECK}/T_{OCKTCE}	TCE pin Setup/Hold with respect to CLK	0.28/0.01	0.30/0.01	0.45/0.01	0.45/0.06	0.31/-0.10	ns
Combinatorial							
T_{ODQ}	D1 to OQ out or T1 to TQ out	0.73	0.81	0.97	0.97	1.18	ns
Sequential Delays							
T_{OCKQ}	CLK to OQ/TQ out	0.41	0.43	0.49	0.49	0.63	ns
$T_{RQ_OLOGICE2}$	SR pin to OQ/TQ out (HP I/O banks only)	0.63	0.70	0.83	0.83	1.12	ns
$T_{GSRQ_OLOGICE2}$	Global Set/Reset to Q outputs (HP I/O banks only)	7.60	7.60	10.51	10.51	11.39	ns
$T_{RQ_OLOGICE3}$	SR pin to OQ/TQ out (HR I/O banks only)	0.63	0.70	0.83	0.83	1.12	ns
$T_{GSRQ_OLOGICE3}$	Global Set/Reset to Q outputs (HR I/O banks only)	7.60	7.60	10.51	10.51	11.39	ns
Set/Reset							
$T_{RPW_OLOGICE2}$	Minimum Pulse Width, SR inputs (HP I/O banks only)	0.54	0.54	0.63	0.63	0.68	ns, Min
$T_{RPW_OLOGICE3}$	Minimum Pulse Width, SR inputs (HR I/O banks only)	0.54	0.54	0.63	0.63	0.68	ns, Min

Input Serializer/Deserializer Switching Characteristics

Table 25: ISERDES Switching Characteristics

Symbol	Description	Speed Grade					Units
		1.0V				0.9V	
		-3	-2/-2L	-1	-1M	-2L	
Setup/Hold for Control Lines							
$T_{ISCK_BITSLIP}/$ $T_{ISCKC_BITSLIP}$	BITSLIP pin Setup/Hold with respect to CLKDIV	0.01/0.12	0.02/0.13	0.02/0.15	0.02/0.15	0.02/0.21	ns
$T_{ISCK_CE}/$ $T_{ISCKC_CE}^{(2)}$	CE pin Setup/Hold with respect to CLK (for CE1)	0.39/-0.02	0.44/-0.02	0.63/-0.02	0.63/-0.02	0.51/-0.22	ns
$T_{ISCK_CE2}/$ $T_{ISCKC_CE2}^{(2)}$	CE pin Setup/Hold with respect to CLKDIV (for CE2)	-0.12/0.29	-0.12/0.31	-0.12/0.35	-0.12/0.35	-0.17/0.40	ns
Setup/Hold for Data Lines							
$T_{ISDCK_D}/$ T_{ISCKD_D}	D pin Setup/Hold with respect to CLK	-0.02/0.11	-0.02/0.12	-0.02/0.15	-0.02/0.15	-0.04/0.19	ns
$T_{ISDCK_DDLY}/$ T_{ISCKD_DDLY}	DDLY pin Setup/Hold with respect to CLK (using IDELAY) ⁽¹⁾	-0.02/0.11	-0.02/0.12	-0.02/0.15	-0.02/0.15	-0.03/0.19	ns
$T_{ISDCK_D_DDR}/$ $T_{ISCKD_D_DDR}$	D pin Setup/Hold with respect to CLK at DDR mode	-0.02/0.11	-0.02/0.12	-0.02/0.15	-0.02/0.15	-0.04/0.19	ns
$T_{ISDCK_DDLY_DDR}/$ $T_{ISCKD_DDLY_DDR}$	D pin Setup/Hold with respect to CLK at DDR mode (using IDELAY) ⁽¹⁾	0.11/0.11	0.12/0.12	0.15/0.15	0.15/0.15	0.19/0.19	ns
Sequential Delays							
T_{ISCKO_Q}	CLKDIV to out at Q pin	0.46	0.47	0.58	0.58	0.67	ns
Propagation Delays							
T_{ISDO_DO}	D input to DO output pin	0.09	0.10	0.12	0.12	0.14	ns

Notes:

1. Recorded at 0 tap value.
2. T_{ISCK_CE2} and T_{ISCKC_CE2} are reported as T_{ISCK_CE}/T_{ISCKC_CE} in the timing report.

Output Serializer/Deserializer Switching Characteristics

Table 26: OSERDES Switching Characteristics

Symbol	Description	Speed Grade					Units
		1.0V				0.9V	
		-3	-2/-2L	-1	-1M	-2L	
Setup/Hold							
T_{OSDCK_D}/T_{OSCKD_D}	D input Setup/Hold with respect to CLKDIV	0.37/0.02	0.40/0.02	0.55/0.02	0.55/0.02	0.44/-0.24	ns
$T_{OSDCK_T}/T_{OSCKD_T}^{(1)}$	T input Setup/Hold with respect to CLK	0.49/-0.15	0.56/-0.15	0.68/-0.15	0.68/-0.15	0.67/-0.25	ns
$T_{OSDCK_T2}/T_{OSCKD_T2}^{(1)}$	T input Setup/Hold with respect to CLKDIV	0.27/-0.15	0.30/-0.15	0.34/-0.15	0.34/-0.15	0.46/-0.25	ns
$T_{OSCKC_OCE}/T_{OSCKC_OCE}$	OCE input Setup/Hold with respect to CLK	0.28/0.03	0.29/0.03	0.45/0.03	0.45/0.03	0.35/-0.15	ns
T_{OSCKC_S}	SR (Reset) input Setup with respect to CLKDIV	0.41	0.46	0.75	0.75	0.70	ns
$T_{OSCKC_TCE}/T_{OSCKC_TCE}$	TCE input Setup/Hold with respect to CLK	0.28/0.01	0.30/0.01	0.45/0.01	0.45/0.01	0.31/-0.15	ns
Sequential Delays							
T_{OSCKO_OQ}	Clock to out from CLK to OQ	0.35	0.37	0.42	0.42	0.54	ns
T_{OSCKO_TQ}	Clock to out from CLK to TQ	0.41	0.43	0.49	0.49	0.63	ns
Combinatorial							
T_{OSDO_TTQ}	T input to TQ Out	0.73	0.81	0.97	0.97	1.18	ns

Notes:

- T_{OSDCK_T2} and T_{OSCKD_T2} are reported as T_{OSDCK_T}/T_{OSCKD_T} in the timing report.

Input/Output Delay Switching Characteristics

Table 27: Input/Output Delay Switching Characteristics

Symbol	Description	Speed Grade					Units
		1.0V				0.9V	
		-3	-2/-2L	-1	-1M	-2L	
IDELAYCTRL							
T _{DLYCCO_RDY}	Reset to Ready for IDELAYCTRL	3.22	3.22	3.22	3.22	3.22	µs
F _{IDELAYCTRL_REF}	Attribute REFCLK frequency = 200.00 ⁽¹⁾	200.00	200.00	200.00	200.00	200.00	MHz
	Attribute REFCLK frequency = 300.00 ⁽¹⁾	300.00	300.00	N/A	N/A	N/A	MHz
IDELAYCTRL_REF_PRECISION	REFCLK precision	±10	±10	±10	±10	±10	MHz
T _{IDELAYCTRL_RPW}	Minimum Reset pulse width	52.00	52.00	52.00	52.00	52.00	ns
IDELAY/ODELAY							
T _{IDELAYRESOLUTION}	IDELAY/ODELAY chain delay resolution	1/(32 x 2 x F _{REF})					ps
T _{IDELAYPAT_JIT} and T _{ODELAYPAT_JIT}	Pattern dependent period jitter in delay chain for clock pattern. ⁽²⁾	0	0	0	0	0	ps per tap
	Pattern dependent period jitter in delay chain for random data pattern (PRBS 23) ⁽³⁾	±5	±5	±5	±5	±5	ps per tap
	Pattern dependent period jitter in delay chain for random data pattern (PRBS 23) ⁽⁴⁾	±9	±9	±9	±9	±9	ps per tap
T _{IDELAY_CLK_MAX} / T _{ODELAY_CLK_MAX}	Maximum frequency of CLK input to IDELAY/ODELAY	800.00	800.00	710.00	710.00	710.00	MHz
T _{IDCCK_CE} / T _{IDCKC_CE}	CE pin Setup/Hold with respect to C for IDELAY	0.11/0.10	0.14/0.12	0.18/0.14	0.18/0.14	0.14/0.16	ns
T _{ODCCK_CE} / T _{ODCKC_CE}	CE pin Setup/Hold with respect to C for ODELAY	0.14/0.03	0.16/0.04	0.19/0.05	0.19/0.05	0.28/0.06	ns
T _{IDCCK_INC} / T _{IDCKC_INC}	INC pin Setup/Hold with respect to C for IDELAY	0.10/0.14	0.12/0.16	0.14/0.20	0.14/0.20	0.10/0.23	ns
T _{ODCCK_INC} / T _{ODCKC_INC}	INC pin Setup/Hold with respect to C for ODELAY	0.10/0.07	0.12/0.08	0.13/0.09	0.13/0.09	0.19/0.16	ns
T _{IDCCK_RST} / T _{IDCKC_RST}	RST pin Setup/Hold with respect to C for IDELAY	0.13/0.08	0.14/0.10	0.16/0.12	0.16/0.12	0.22/0.19	ns
T _{ODCCK_RST} / T _{ODCKC_RST}	RST pin Setup/Hold with respect to C for ODELAY	0.16/0.04	0.19/0.06	0.24/0.08	0.24/0.08	0.32/0.11	ns
T _{IDDO_IDATAIN}	Propagation delay through IDELAY	Note 5	Note 5	Note 5	Note 5	Note 5	ps
T _{ODDO_ODATAIN}	Propagation delay through ODELAY	Note 5	Note 5	Note 5	Note 5	Note 5	ps

Notes:

1. Average Tap Delay at 200 MHz = 78 ps, at 300 MHz = 52 ps.
2. When HIGH_PERFORMANCE mode is set to TRUE or FALSE.
3. When HIGH_PERFORMANCE mode is set to TRUE.
4. When HIGH_PERFORMANCE mode is set to FALSE.
5. Delay depends on IDELAY/ODELAY tap setting. See the timing report for actual values.

Table 28: IO_FIFO Switching Characteristics

Symbol	Description	Speed Grade					Units
		1.0V				0.9V	
		-3	-2/-2L	-1	-1M	-2L	
IO_FIFO Clock to Out Delays							
T_{OFFCKO_DO}	RDCLK to Q outputs	0.51	0.56	0.63	0.63	0.81	ns
T_{CKO_FLAGS}	Clock to IO_FIFO Flags	0.59	0.62	0.81	0.81	0.77	ns
Setup/Hold							
T_{CCK_D}/T_{CKC_D}	D inputs to WRCLK	0.43/-0.01	0.47/-0.01	0.53/-0.01	0.53/0.09	0.76/-0.05	ns
$T_{IFFCK_WREN}/T_{IFFCKC_WREN}$	WREN to WRCLK	0.39/-0.01	0.43/-0.01	0.50/-0.01	0.50/-0.01	0.70/-0.05	ns
$T_{OFFCK_RDEN}/T_{OFFCKC_RDEN}$	RDEN to RDCLK	0.49/0.01	0.53/0.02	0.61/0.02	0.61/0.02	0.79/-0.02	ns
Minimum Pulse Width							
$T_{PWH_IO_FIFO}$	RESET, RDCLK, WRCLK	0.81	0.92	1.08	1.08	1.29	ns
$T_{PWL_IO_FIFO}$	RESET, RDCLK, WRCLK	0.81	0.92	1.08	1.08	1.29	ns
Maximum Frequency							
F_{MAX}	RDCLK and WRCLK	533.05	470.37	400.00	400.00	333.33	MHz

CLB Switching Characteristics

Table 29: CLB Switching Characteristics

Symbol	Description	Speed Grade					Units
		1.0V				0.9V	
		-3	-2/-2L	-1	-1M	-2L	
Combinatorial Delays							
T_{ILO}	An – Dn LUT address to A	0.05	0.05	0.06	0.06	0.07	ns, Max
T_{ILO_2}	An – Dn LUT address to AMUX/CMUX	0.15	0.16	0.19	0.19	0.22	ns, Max
T_{ILO_3}	An – Dn LUT address to BMUX_A	0.24	0.25	0.30	0.30	0.37	ns, Max
T_{ITO}	An – Dn inputs to A – D Q outputs	0.58	0.61	0.74	0.74	0.91	ns, Max
T_{AXA}	AX inputs to AMUX output	0.38	0.40	0.49	0.49	0.62	ns, Max
T_{AXB}	AX inputs to BMUX output	0.40	0.42	0.52	0.52	0.66	ns, Max
T_{AXC}	AX inputs to CMUX output	0.39	0.41	0.50	0.50	0.62	ns, Max
T_{AXD}	AX inputs to DMUX output	0.43	0.44	0.52	0.52	0.67	ns, Max
T_{BxB}	BX inputs to BMUX output	0.31	0.33	0.40	0.40	0.51	ns, Max
T_{BxD}	BX inputs to DMUX output	0.38	0.39	0.47	0.47	0.62	ns, Max
T_{CxC}	CX inputs to CMUX output	0.27	0.28	0.34	0.34	0.43	ns, Max
T_{CxD}	CX inputs to DMUX output	0.33	0.34	0.41	0.41	0.54	ns, Max
T_{DxD}	DX inputs to DMUX output	0.32	0.33	0.40	0.40	0.52	ns, Max
Sequential Delays							
T_{CKO}	Clock to AQ – DQ outputs	0.26	0.27	0.32	0.32	0.40	ns, Max
T_{SHCKO}	Clock to AMUX – DMUX outputs	0.32	0.32	0.39	0.39	0.46	ns, Max
Setup and Hold Times of CLB Flip-Flops Before/After Clock CLK							
T_{AS}/T_{AH}	$A_N – D_N$ input to CLK on A – D Flip Flops	0.01/0.12	0.02/0.13	0.03/0.18	0.03/0.24	0.02/0.18	ns, Min
T_{DICK}/T_{CKDI}	$A_X – D_X$ input to CLK on A – D Flip Flops	0.04/0.14	0.04/0.14	0.05/0.20	0.05/0.26	0.05/0.21	ns, Min
	$A_X – D_X$ input through MUXs and/or carry logic to CLK on A – D Flip Flops	0.36/0.10	0.37/0.11	0.46/0.16	0.46/0.22	0.56/0.15	ns, Min
$T_{CECK_CLB}/T_{CKCE_CLB}$	CE input to CLK on A – D Flip Flops	0.19/0.05	0.20/0.05	0.25/0.05	0.25/0.11	0.24/0.04	ns, Min
T_{SRCK}/T_{CKSR}	SR input to CLK on A – D Flip Flops	0.30/0.05	0.31/0.07	0.37/0.09	0.37/0.22	0.48/0.05	ns, Min
Set/Reset							
T_{SRMIN}	SR input minimum pulse width	0.52	0.78	1.04	1.04	0.95	ns, Min
T_{RQ}	Delay from SR input to AQ – DQ flip-flops	0.38	0.38	0.46	0.46	0.59	ns, Max
T_{CEO}	Delay from CE input to AQ – DQ flip-flops	0.34	0.35	0.43	0.43	0.54	ns, Max
F_{TOG}	Toggle frequency (for export control)	1818	1818	1818	1818	1286	MHz

CLB Distributed RAM Switching Characteristics (SLICEM Only)

Table 30: CLB Distributed RAM Switching Characteristics

Symbol	Description	Speed Grade					Units
		1.0V				0.9V	
		-3	-2/-2L	-1	-1M	-2L	
Sequential Delays							
T _{SHCKO}	Clock to A – B outputs	0.68	0.70	0.85	0.85	1.08	ns, Max
T _{SHCKO_1}	Clock to AMUX – BMUX outputs	0.91	0.95	1.15	1.15	1.44	ns, Max
Setup and Hold Times Before/After Clock CLK							
T _{DS_LRAM} /T _{DH_LRAM}	A – D inputs to CLK	0.45/0.23	0.45/0.24	0.54/0.27	0.54/0.28	0.69/0.33	ns, Min
T _{AS_LRAM} /T _{AH_LRAM}	Address An inputs to clock	0.13/0.50	0.14/0.50	0.17/0.58	0.17/0.61	0.21/0.63	ns, Min
	Address An inputs through MUXs and/or carry logic to clock	0.40/0.16	0.42/0.17	0.52/0.23	0.52/0.29	0.63/0.23	ns, Min
T _{WS_LRAM} /T _{WH_LRAM}	WE input to clock	0.29/0.09	0.30/0.09	0.36/0.09	0.36/0.11	0.46/0.10	ns, Min
T _{CECK_LRAM} / T _{CKCE_LRAM}	CE input to CLK	0.29/0.09	0.30/0.09	0.37/0.09	0.37/0.11	0.47/0.10	ns, Min
Clock CLK							
T _{MPW}	Minimum pulse width	0.68	0.77	0.91	0.91	1.11	ns, Min
T _{MCP}	Minimum clock period	1.35	1.54	1.82	1.82	2.22	ns, Min

Notes:

1. T_{SHCKO} also represents the CLK to XMUX output. Refer to the timing report for the CLK to XMUX path.

CLB Shift Register Switching Characteristics (SLICEM Only)

Table 31: CLB Shift Register Switching Characteristics

Symbol	Description	Speed Grade					Units
		1.0V				0.9V	
		-3	-2/-2L	-1	-1M	-2L	
Sequential Delays							
T _{REG}	Clock to A – D outputs	0.96	0.98	1.20	1.20	1.35	ns, Max
T _{REG_MUX}	Clock to AMUX – DMUX output	1.19	1.23	1.50	1.50	1.72	ns, Max
T _{REG_M31}	Clock to DMUX output via M31 output	0.89	0.91	1.10	1.10	1.25	ns, Max
Setup and Hold Times Before/After Clock CLK							
T _{WS_SHFREG} / T _{WH_SHFREG}	WE input	0.26/0.09	0.27/0.09	0.33/0.09	0.33/0.11	0.41/0.10	ns, Min
T _{CECK_SHFREG} / T _{CKCE_SHFREG}	CE input to CLK	0.27/0.09	0.28/0.09	0.33/0.09	0.33/0.11	0.42/0.10	ns, Min
T _{DS_SHFREG} / T _{DH_SHFREG}	A – D inputs to CLK	0.28/0.26	0.28/0.26	0.33/0.30	0.33/0.36	0.41/0.36	ns, Min
Clock CLK							
T _{MPW_SHFREG}	Minimum pulse width	0.55	0.65	0.78	0.78	0.91	ns, Min

Block RAM and FIFO Switching Characteristics

Table 32: Block RAM and FIFO Switching Characteristics

Symbol	Description	Speed Grade					Units
		1.0V				0.9V	
		-3	-2/-2L	-1	-1M	-2L	
Block RAM and FIFO Clock-to-Out Delays							
T _{RCKO_DO} and T _{RCKO_DO_REG} ⁽¹⁾	Clock CLK to DOUT output (without output register) ⁽²⁾⁽³⁾	1.57	1.80	2.08	2.08	2.44	ns, Max
	Clock CLK to DOUT output (with output register) ⁽⁴⁾⁽⁵⁾	0.54	0.63	0.75	0.75	0.86	ns, Max
T _{RCKO_DO_ECC} and T _{RCKO_DO_ECC_REG}	Clock CLK to DOUT output with ECC (without output register) ⁽²⁾⁽³⁾	2.35	2.58	3.26	3.26	4.49	ns, Max
	Clock CLK to DOUT output with ECC (with output register) ⁽⁴⁾⁽⁵⁾	0.62	0.69	0.80	0.80	0.94	ns, Max
T _{RCKO_DO_CASCADE} and T _{RCKO_DO_CASCADE_REG}	Clock CLK to DOUT output with Cascade (without output register) ⁽²⁾	2.21	2.45	2.80	2.80	3.19	ns, Max
	Clock CLK to DOUT output with Cascade (with output register) ⁽⁴⁾	0.98	1.08	1.24	1.24	1.32	ns, Max
T _{RCKO_FLAGS}	Clock CLK to FIFO flags outputs ⁽⁶⁾	0.65	0.74	0.89	0.89	0.97	ns, Max
T _{RCKO_POINTERS}	Clock CLK to FIFO pointers outputs ⁽⁷⁾	0.79	0.87	0.98	0.98	1.10	ns, Max
T _{RCKO_PARITY_ECC}	Clock CLK to ECCPARITY in ECC encode only mode	0.66	0.72	0.80	0.80	0.93	ns, Max
T _{RCKO_SDBIT_ECC} and T _{RCKO_SDBIT_ECC_REG}	Clock CLK to BITERR (without output register)	2.17	2.38	3.01	3.01	4.15	ns, Max
	Clock CLK to BITERR (with output register)	0.57	0.65	0.76	0.76	0.89	ns, Max
T _{RCKO_RDADDR_ECC} and T _{RCKO_RDADDR_ECC_REG}	Clock CLK to RDADDR output with ECC (without output register)	0.64	0.74	0.90	0.90	0.98	ns, Max
	Clock CLK to RDADDR output with ECC (with output register)	0.71	0.79	0.92	0.92	1.10	ns, Max
Setup and Hold Times Before/After Clock CLK							
T _{RCKC_ADDRA} /T _{RCKC_ADDRA}	ADDR inputs ⁽⁸⁾	0.38/0.27	0.42/0.28	0.48/0.31	0.48/0.38	0.65/0.38	ns, Min
T _{RDCK_DI_WF_NC} / T _{RCKD_DI_WF_NC}	Data input setup/hold time when block RAM is configured in WRITE_FIRST or NO_CHANGE mode ⁽⁹⁾	0.49/0.51	0.55/0.53	0.63/0.57	0.63/0.57	0.78/0.64	ns, Min
T _{RDCK_DI_RF} /T _{RCKD_DI_RF}	Data input setup/hold time when block RAM is configured in READ_FIRST mode ⁽⁹⁾	0.17/0.25	0.19/0.29	0.21/0.35	0.21/0.35	0.25/0.32	ns, Min
T _{RDCK_DI_ECC} / T _{RCKD_DI_ECC}	DIN inputs with block RAM ECC in standard mode ⁽⁹⁾	0.42/0.37	0.47/0.39	0.53/0.43	0.53/0.58	0.66/0.46	ns, Min
T _{RDCK_DI_ECCW} / T _{RCKD_DI_ECCW}	DIN inputs with block RAM ECC encode only ⁽⁹⁾	0.79/0.37	0.87/0.39	0.99/0.43	0.99/0.58	1.17/0.41	ns, Min
T _{RDCK_DI_ECC_FIFO} / T _{RCKD_DI_ECC_FIFO}	DIN inputs with FIFO ECC in standard mode ⁽⁹⁾	0.89/0.47	0.98/0.50	1.12/0.54	1.12/0.69	1.32/0.65	ns, Min

Table 32: Block RAM and FIFO Switching Characteristics (Cont'd)

Symbol	Description	Speed Grade					Units
		1.0V				0.9V	
		-3	-2/-2L	-1	-1M	-2L	
$T_{RCKK_INJECTBITERR}/T_{RCKC_INJECTBITERR}$	Inject single/double bit error in ECC mode	0.49/0.30	0.55/0.31	0.63/0.34	0.63/0.43	0.78/0.41	ns, Min
T_{RCKK_EN}/T_{RCKC_EN}	Block RAM Enable (EN) input	0.30/0.17	0.33/0.18	0.38/0.20	0.38/0.32	0.48/0.22	ns, Min
$T_{RCKK_REGCE}/T_{RCKC_REGCE}$	CE input of output register	0.21/0.13	0.25/0.13	0.31/0.14	0.31/0.19	0.34/0.16	ns, Min
$T_{RCKK_RSTREG}/T_{RCKC_RSTREG}$	Synchronous RSTREG input	0.25/0.06	0.27/0.06	0.29/0.06	0.29/0.14	0.35/0.06	ns, Min
$T_{RCKK_RSTRAM}/T_{RCKC_RSTRAM}$	Synchronous RSTRAM input	0.27/0.35	0.29/0.37	0.31/0.39	0.31/0.39	0.34/0.40	ns, Min
$T_{RCKK_WEA}/T_{RCKC_WEA}$	Write Enable (WE) input (Block RAM only)	0.38/0.15	0.41/0.16	0.46/0.17	0.46/0.29	0.54/0.19	ns, Min
$T_{RCKK_WREN}/T_{RCKC_WREN}$	WREN FIFO inputs	0.39/0.25	0.39/0.30	0.40/0.37	0.40/0.49	0.65/0.37	ns, Min
$T_{RCKK_RDEN}/T_{RCKC_RDEN}$	RDEN FIFO inputs	0.36/0.26	0.36/0.30	0.37/0.37	0.37/0.49	0.60/0.38	ns, Min
Reset Delays							
T_{RCO_FLAGS}	Reset RST to FIFO flags/pointers ⁽¹⁰⁾	0.76	0.83	0.93	0.93	1.06	ns, Max
$T_{RREC_RST}/T_{RREM_RST}$	FIFO reset recovery and removal timing ⁽¹¹⁾	1.59/-0.68	1.76/-0.68	2.01/-0.68	2.01/-0.68	2.07/-0.60	ns, Max
Maximum Frequency							
$F_{MAX_BRAM_WF_NC}$	Block RAM (Write first and No change modes) When not in SDP RF mode	601.32	543.77	458.09	458.09	372.44	MHz
$F_{MAX_BRAM_RF_PERFORMANCE}$	Block RAM (Read first, Performance mode) When in SDP RF mode but no address overlap between port A and port B	601.32	543.77	458.09	458.09	372.44	MHz
$F_{MAX_BRAM_RF_DELAYED_WRITE}$	Block RAM (Read first, Delayed_write mode) When in SDP RF mode and there is possibility of overlap between port A and port B addresses	528.26	477.33	400.80	400.80	317.36	MHz
$F_{MAX_CAS_WF_NC}$	Block RAM Cascade (Write first, No change mode) When cascade but not in RF mode	551.27	493.83	408.00	408.00	322.48	MHz
$F_{MAX_CAS_RF_PERFORMANCE}$	Block RAM Cascade (Read first, Performance mode) When in cascade with RF mode and no possibility of address overlap/one port is disabled	551.27	493.83	408.00	408.00	322.48	MHz
$F_{MAX_CAS_RF_DELAYED_WRITE}$	When in cascade RF mode and there is a possibility of address overlap between port A and port B	478.24	427.35	350.88	350.88	267.38	MHz

Table 32: Block RAM and FIFO Switching Characteristics (Cont'd)

Symbol	Description	Speed Grade					Units
		1.0V				0.9V	
		-3	-2/-2L	-1	-1M	-2L	
F _{MAX_FIFO}	FIFO in all modes without ECC	601.32	543.77	458.09	458.09	372.44	MHz
F _{MAX_ECC}	Block RAM and FIFO in ECC configuration	484.26	430.85	351.12	351.12	254.13	MHz

Notes:

1. The timing report shows all of these parameters as T_{RCKO_DO}.
2. T_{RCKO_DOR} includes T_{RCKO_DOW}, T_{RCKO_DOPR}, and T_{RCKO_DOPW} as well as the B port equivalent timing parameters.
3. These parameters also apply to synchronous FIFO with DO_REG = 0.
4. T_{RCKO_DO} includes T_{RCKO_DOP} as well as the B port equivalent timing parameters.
5. These parameters also apply to multirate (asynchronous) and synchronous FIFO with DO_REG = 1.
6. T_{RCKO_FLAGS} includes the following parameters: T_{RCKO_AEMPTY}, T_{RCKO_AFULL}, T_{RCKO_EMPTY}, T_{RCKO_FULL}, T_{RCKO_RDERR}, T_{RCKO_WRERR}.
7. T_{RCKO_POINTERS} includes both T_{RCKO_RDCOUNT} and T_{RCKO_WRCOUNT}.
8. The ADDR setup and hold must be met when EN is asserted (even when WE is deasserted). Otherwise, block RAM data corruption is possible.
9. These parameters include both A and B inputs as well as the parity inputs of A and B.
10. T_{RCO_FLAGS} includes the following flags: AEMPTY, AFULL, EMPTY, FULL, RDERR, WRERR, RDCOUNT, and WRCOUNT.
11. RDEN and WREN must be held Low prior to and during reset. The FIFO reset must be asserted for at least five positive clock edges of the slowest clock (WRCLK or RDCLK).

DSP48E1 Switching Characteristics

Table 33: DSP48E1 Switching Characteristics

Symbol	Description	Speed Grade					Units
		1.0V				0.9V	
		-3	-2/-2L	-1	-1M	-2L	
Setup and Hold Times of Data/Control Pins to the Input Register Clock							
$T_{D\text{SPDCK_A_AREG}}/T_{D\text{SPCKD_A_AREG}}$	A input to A register CLK	0.24/ 0.12	0.27/ 0.14	0.31/ 0.16	0.33/ 0.18	0.38/ 0.12	ns
$T_{D\text{SPDCK_B_BREG}}/T_{D\text{SPCKD_B_BREG}}$	B input to B register CLK	0.28/ 0.13	0.32/ 0.14	0.39/ 0.15	0.41/ 0.18	0.51/ 0.16	ns
$T_{D\text{SPDCK_C_CREG}}/T_{D\text{SPCKD_C_CREG}}$	C input to C register CLK	0.15/ 0.15	0.17/ 0.17	0.20/ 0.20	0.20/ 0.22	0.31/ 0.21	ns
$T_{D\text{SPDCK_D_DREG}}/T_{D\text{SPCKD_D_DREG}}$	D input to D register CLK	0.21/ 0.19	0.27/ 0.22	0.35/ 0.26	0.35/ 0.27	0.46/ 0.20	ns
$T_{D\text{SPDCK_ACIN_AREG}}/T_{D\text{SPCKD_ACIN_AREG}}$	ACIN input to A register CLK	0.21/ 0.12	0.24/ 0.14	0.27/ 0.16	0.30/ 0.16	0.31/ 0.12	ns
$T_{D\text{SPDCK_BCIN_BREG}}/T_{D\text{SPCKD_BCIN_BREG}}$	BCIN input to B register CLK	0.22/ 0.13	0.25/ 0.14	0.30/ 0.15	0.32/ 0.15	0.34/ 0.16	ns
Setup and Hold Times of Data Pins to the Pipeline Register Clock							
$T_{D\text{SPDCK_}\{A, B\}_M\text{REG_MULT}}/T_{D\text{SPCKD_}\{A, B\}_M\text{REG_MULT}}$	{A, B} input to M register CLK using multiplier	2.04/ -0.01	2.34/ -0.01	2.79/ -0.01	2.79/ -0.01	3.66/ -0.06	ns
$T_{D\text{SPDCK_}\{A, D\}_A\text{DREG}}/T_{D\text{SPCKD_}\{A, D\}_A\text{DREG}}$	{A, D} input to AD register CLK	1.09/ -0.02	1.25/ -0.02	1.49/ -0.02	1.49/ -0.02	1.94/ -0.23	ns
Setup and Hold Times of Data/Control Pins to the Output Register Clock							
$T_{D\text{SPDCK_}\{A, B\}_P\text{REG_MULT}}/T_{D\text{SPCKD_}\{A, B\}_P\text{REG_MULT}}$	{A, B,} input to P register CLK using multiplier	3.41/ -0.24	3.90/ -0.24	4.64/ -0.24	4.64/ -0.24	5.89/ -0.41	ns
$T_{D\text{SPDCK_D_PREG_MULT}}/T_{D\text{SPCKD_D_PREG_MULT}}$	D input to P register CLK using multiplier	3.33/ -0.62	3.81/ -0.62	4.53/ -0.62	4.53/ -0.62	5.70/ -1.42	ns
$T_{D\text{SPDCK_}\{A, B\}_P\text{REG}}/T_{D\text{SPCKD_}\{A, B\}_P\text{REG}}$	A or B input to P register CLK not using multiplier	1.47/ -0.24	1.68/ -0.24	2.00/ -0.24	2.00/ -0.24	2.37/ -0.41	ns
$T_{D\text{SPDCK_C_PREG}}/T_{D\text{SPCKD_C_PREG}}$	C input to P register CLK not using multiplier	1.30/ -0.22	1.49/ -0.22	1.78/ -0.22	1.78/ -0.22	2.11/ -0.36	ns
$T_{D\text{SPDCK_PCIN_PREG}}/T_{D\text{SPCKD_PCIN_PREG}}$	PCIN input to P register CLK	1.12/ -0.13	1.28/ -0.13	1.52/ -0.13	1.52/ -0.13	1.81/ -0.21	ns
Setup and Hold Times of the CE Pins							
$T_{D\text{SPDCK_}\{CEA;CEB\}_A\text{REG};B\text{REG}}/T_{D\text{SPCKD_}\{CEA;CEB\}_A\text{REG};B\text{REG}}$	{CEA; CEB} input to {A; B} register CLK	0.30/ 0.05	0.36/ 0.06	0.44/ 0.09	0.44/ 0.09	0.55/ 0.09	ns
$T_{D\text{SPDCK_CEC_CREG}}/T_{D\text{SPCKD_CEC_CREG}}$	CEC input to C register CLK	0.24/ 0.08	0.29/ 0.09	0.36/ 0.11	0.36/ 0.11	0.43/ 0.11	ns
$T_{D\text{SPDCK_CED_DREG}}/T_{D\text{SPCKD_CED_DREG}}$	CED input to D register CLK	0.31/ -0.02	0.36/ -0.02	0.44/ -0.02	0.44/ 0.02	0.58/ 0.12	ns
$T_{D\text{SPDCK_CEM_MREG}}/T_{D\text{SPCKD_CEM_MREG}}$	CEM input to M register CLK	0.26/ 0.15	0.29/ 0.17	0.33/ 0.20	0.33/ 0.20	0.39/ 0.25	ns
$T_{D\text{SPDCK_CEP_PREG}}/T_{D\text{SPCKD_CEP_PREG}}$	CEP input to P register CLK	0.31/ 0.01	0.36/ 0.01	0.45/ 0.01	0.45/ 0.01	0.54/ 0.00	ns

Table 33: DSP48E1 Switching Characteristics (Cont'd)

Symbol	Description	Speed Grade					Units
		1.0V				0.9V	
		-3	-2/-2L	-1	-1M	-2L	
Setup and Hold Times of the RST Pins							
$T_{\text{DSPDCK_RSTA; RSTB_AREG; BREG}} / T_{\text{DSPCKD_RSTA; RSTB_AREG; BREG}}$	{RSTA, RSTB} input to {A, B} register CLK	0.34/ 0.10	0.39/ 0.11	0.47/ 0.13	0.47/ 0.14	0.53/ 0.34	ns
$T_{\text{DSPDCK_RSTC_CREG}} / T_{\text{DSPCKD_RSTC_CREG}}$	RSTC input to C register CLK	0.06/ 0.22	0.07/ 0.24	0.08/ 0.26	0.08/ 0.26	0.08/ 0.31	ns
$T_{\text{DSPDCK_RSTD_DREG}} / T_{\text{DSPCKD_RSTD_DREG}}$	RSTD input to D register CLK	0.37/ 0.06	0.42/ 0.06	0.50/ 0.07	0.50/ 0.07	0.57/ 0.07	ns
$T_{\text{DSPDCK_RSTM_MREG}} / T_{\text{DSPCKD_RSTM_MREG}}$	RSTM input to M register CLK	0.18/ 0.18	0.20/ 0.21	0.23/ 0.24	0.23/ 0.24	0.24/ 0.29	ns
$T_{\text{DSPDCK_RSTP_PREG}} / T_{\text{DSPCKD_RSTP_PREG}}$	RSTP input to P register CLK	0.24/ 0.01	0.26/ 0.01	0.30/ 0.01	0.30/ 0.11	0.37/ 0.00	ns
Combinatorial Delays from Input Pins to Output Pins							
$T_{\text{DSPDO_A_CARRYOUT_MULT}}$	A input to CARRYOUT output using multiplier	3.21	3.69	4.39	4.39	5.60	ns
$T_{\text{DSPDO_D_P_MULT}}$	D input to P output using multiplier	3.15	3.61	4.30	4.30	5.44	ns
$T_{\text{DSPDO_A_P}}$	A input to P output not using multiplier	1.30	1.48	1.76	1.76	2.10	ns
$T_{\text{DSPDO_C_P}}$	C input to P output	1.13	1.30	1.55	1.55	1.84	ns
Combinatorial Delays from Input Pins to Cascading Output Pins							
$T_{\text{DSPDO_A; B_ACOUT; BCOUT}}$	{A, B} input to {ACOUT, BCOUT} output	0.47	0.53	0.63	0.63	0.75	ns
$T_{\text{DSPDO_A; B_CARRYCASCOULT}}$	{A, B} input to CARRYCASCOULT output using multiplier	3.44	3.94	4.69	4.69	5.96	ns
$T_{\text{DSPDO_D_CARRYCASCOULT}}$	D input to CARRYCASCOULT output using multiplier	3.36	3.85	4.58	4.58	5.77	ns
$T_{\text{DSPDO_A; B_CARRYCASCOULT}}$	{A, B} input to CARRYCASCOULT output not using multiplier	1.50	1.72	2.04	2.04	2.44	ns
$T_{\text{DSPDO_C_CARRYCASCOULT}}$	C input to CARRYCASCOULT output	1.34	1.53	1.83	1.83	2.18	ns
Combinatorial Delays from Cascading Input Pins to All Output Pins							
$T_{\text{DSPDO_ACIN_P_MULT}}$	ACIN input to P output using multiplier	3.09	3.55	4.24	4.24	5.42	ns
$T_{\text{DSPDO_ACIN_P}}$	ACIN input to P output not using multiplier	1.16	1.33	1.59	1.59	2.07	ns
$T_{\text{DSPDO_ACIN_ACOUT}}$	ACIN input to ACOUT output	0.32	0.37	0.45	0.45	0.53	ns
$T_{\text{DSPDO_ACIN_CARRYCASCOULT}}$	ACIN input to CARRYCASCOULT output using multiplier	3.30	3.79	4.52	4.52	5.76	ns
$T_{\text{DSPDO_ACIN_CARRYCASCOULT}}$	ACIN input to CARRYCASCOULT output not using multiplier	1.37	1.57	1.87	1.87	2.40	ns
$T_{\text{DSPDO_PCIN_P}}$	PCIN input to P output	0.94	1.08	1.29	1.29	1.54	ns
$T_{\text{DSPDO_PCIN_CARRYCASCOULT}}$	PCIN input to CARRYCASCOULT output	1.15	1.32	1.57	1.57	1.88	ns

Table 33: DSP48E1 Switching Characteristics (Cont'd)

Symbol	Description	Speed Grade					Units
		1.0V				0.9V	
		-3	-2/-2L	-1	-1M	-2L	
Clock to Outs from Output Register Clock to Output Pins							
$T_{\text{DSPCKO_P_PREG}}$	CLK PREG to P output	0.33	0.35	0.39	0.39	0.45	ns
$T_{\text{DSPCKO_CARRYCASCOU_PREG}}$	CLK PREG to CARRYCASCOU output	0.44	0.50	0.59	0.59	0.71	ns
Clock to Outs from Pipeline Register Clock to Output Pins							
$T_{\text{DSPCKO_P_MREG}}$	CLK MREG to P output	1.42	1.64	1.96	1.96	2.31	ns
$T_{\text{DSPCKO_CARRYCASCOU_MREG}}$	CLK MREG to CARRYCASCOU output	1.63	1.87	2.24	2.24	2.65	ns
$T_{\text{DSPCKO_P_ADREG_MULT}}$	CLK ADREG to P output using multiplier	2.30	2.63	3.13	3.13	3.90	ns
$T_{\text{DSPCKO_CARRYCASCOU_ADREG_MULT}}$	CLK ADREG to CARRYCASCOU output using multiplier	2.51	2.87	3.41	3.41	4.23	ns
Clock to Outs from Input Register Clock to Output Pins							
$T_{\text{DSPCKO_P_AREG_MULT}}$	CLK AREG to P output using multiplier	3.34	3.83	4.55	4.55	5.80	ns
$T_{\text{DSPCKO_P_BREG}}$	CLK BREG to P output not using multiplier	1.39	1.59	1.88	1.88	2.24	ns
$T_{\text{DSPCKO_P_CREG}}$	CLK CREG to P output not using multiplier	1.43	1.64	1.95	1.95	2.32	ns
$T_{\text{DSPCKO_P_DREG_MULT}}$	CLK DREG to P output using multiplier	3.32	3.80	4.51	4.51	5.74	ns
Clock to Outs from Input Register Clock to Cascading Output Pins							
$T_{\text{DSPCKO_}\{ACOUT; BCOUT\}_}\{AREG; BREG\}}$	CLK (ACOUT, BCOUT) to {A,B} register output	0.55	0.62	0.74	0.74	0.87	ns
$T_{\text{DSPCKO_CARRYCASCOU_}\{AREG; BREG\}_MULT}$	CLK (AREG, BREG) to CARRYCASCOU output using multiplier	3.55	4.06	4.84	4.84	6.13	ns
$T_{\text{DSPCKO_CARRYCASCOU_BREG}}$	CLK BREG to CARRYCASCOU output not using multiplier	1.60	1.82	2.16	2.16	2.58	ns
$T_{\text{DSPCKO_CARRYCASCOU_DREG_MULT}}$	CLK DREG to CARRYCASCOU output using multiplier	3.52	4.03	4.79	4.79	6.07	ns
$T_{\text{DSPCKO_CARRYCASCOU_CREG}}$	CLK CREG to CARRYCASCOU output	1.64	1.88	2.23	2.23	2.65	ns
Maximum Frequency							
F_{MAX}	With all registers used	741.84	650.20	547.95	547.95	429.37	MHz
$F_{\text{MAX_PATDET}}$	With pattern detector	627.35	549.75	463.61	463.61	365.90	MHz
$F_{\text{MAX_MULT_NOMREG}}$	Two register multiply without MREG	412.20	360.75	303.77	303.77	248.32	MHz
$F_{\text{MAX_MULT_NOMREG_PATDET}}$	Two register multiply without MREG with pattern detect	374.25	327.65	276.01	276.01	225.73	MHz
$F_{\text{MAX_PREADD_MULT_NOADREG}}$	Without ADREG	468.82	408.66	342.70	342.70	263.44	MHz
$F_{\text{MAX_PREADD_MULT_NOADREG_PATDET}}$	Without ADREG with pattern detect	468.82	408.66	342.70	342.70	263.44	MHz

Table 33: DSP48E1 Switching Characteristics (Cont'd)

Symbol	Description	Speed Grade					Units
		1.0V				0.9V	
		-3	-2/-2L	-1	-1M	-2L	
F _{MAX_NOPIPELINEREG}	Without pipeline registers (MREG, ADREG)	306.84	267.81	225.02	225.02	177.15	MHz
F _{MAX_NOPIPELINEREG_PATDET}	Without pipeline registers (MREG, ADREG) with pattern detect	285.23	249.13	209.38	209.38	165.32	MHz

Clock Buffers and Networks

Table 34: Global Clock Switching Characteristics (Including BUFGCTRL)

Symbol	Description	Speed Grade					Units
		1.0V				0.9V	
		-3	-2/-2L	-1	-1M	-2L	
T _{BCCCK_CE} /T _{BCCCK_CE} ⁽¹⁾	CE pins Setup/Hold	0.12/0.30	0.14/0.38	0.26/0.38	0.26/0.92	0.23/0.40	ns
T _{BCCCK_S} /T _{BCCCK_S} ⁽¹⁾	S pins Setup/Hold	0.12/0.30	0.14/0.38	0.26/0.38	0.26/0.92	0.23/0.40	ns
T _{BCCCKO_O} ⁽²⁾	BUFGCTRL delay from I0/I1 to O	0.08	0.10	0.12	0.12	0.10	ns
Maximum Frequency							
F _{MAX_BUFG}	Global clock tree (BUFG)	741.00	710.00	625.00	625.00	560.00	MHz

Notes:

1. T_{BCCCK_CE} and T_{BCCCK_S} must be satisfied to assure glitch-free operation of the global clock when switching between clocks. These parameters do not apply to the BUFGMUX primitive that assures glitch-free operation. The other global clock setup and hold times are optional; only needing to be satisfied if device operation requires simulation matches on a cycle-for-cycle basis when switching between clocks.
2. T_{BGCKO_O} (BUFG delay from I0 to O) values are the same as T_{BCCCKO_O} values.

Table 35: Input/Output Clock Switching Characteristics (BUFIO)

Symbol	Description	Speed Grade					Units
		1.0V				0.9V	
		-3	-2/-2L	-1	-1M	-2L	
T _{BIOCKO_O}	Clock to out delay from I to O	1.04	1.14	1.32	1.32	1.48	ns
Maximum Frequency							
F _{MAX_BUFIO}	I/O clock tree (BUFIO)	800.00	800.00	710.00	710.00	710.00	MHz

Table 36: Regional Clock Buffer Switching Characteristics (BUFR)

Symbol	Description	Speed Grade					Units
		1.0V				0.9V	
		-3	-2/-2L	-1	-1M	-2L	
T _{BRCKO_O}	Clock to out delay from I to O	0.60	0.65	0.77	0.77	1.06	ns
T _{BRCKO_O_BYP}	Clock to out delay from I to O with Divide Bypass attribute set	0.30	0.32	0.38	0.38	0.57	ns
T _{BRDO_O}	Propagation delay from CLR to O	0.71	0.75	0.96	0.96	0.93	ns

Table 36: Regional Clock Buffer Switching Characteristics (BUFR) (Cont'd)

Symbol	Description	Speed Grade					Units
		1.0V				0.9V	
		-3	-2/-2L	-1	-1M	-2L	
Maximum Frequency							
$F_{MAX_BUFR}^{(1)}$	Regional clock tree (BUFR)	600.00	540.00	450.00	450.00	450.00	MHz

Notes:

1. The maximum input frequency to the BUFR and BUFMR is the BUFIO F_{MAX} frequency.

Table 37: Horizontal Clock Buffer Switching Characteristics (BUFH)

Symbol	Description	Speed Grade					Units
		1.0V				0.9V	
		-3	-2/-2L	-1	-1M	-2L	
T_{BHCKO_O}	BUFH delay from I to O	0.10	0.11	0.13	0.13	0.12	ns
T_{BHCK_CE}/T_{BHCK_CE}	CE pin Setup and Hold	0.20/0.16	0.23/0.20	0.38/0.21	0.38/0.79	0.28/0.09	ns
Maximum Frequency							
F_{MAX_BUFH}	Horizontal clock buffer (BUFH)	741.00	710.00	625.00	625.00	560.00	MHz

Table 38: Duty Cycle Distortion and Clock-Tree Skew

Symbol	Description	Device	Speed Grade					Units
			1.0V				0.9V	
			-3	-2/-2L	-1	-1M	-2L	
T_{DCD_CLK}	Global Clock Tree Duty Cycle Distortion ⁽¹⁾	All	0.20	0.20	0.20	0.20	0.25	ns
T_{CKSKEW}	Global Clock Tree Skew ⁽²⁾	XC7K70T	0.29	0.40	0.40	N/A	0.47	ns
		XC7K160T	0.42	0.53	0.57	N/A	0.59	ns
		XC7K325T	0.59	0.74	0.79	N/A	0.91	ns
		XC7K355T	0.45	0.57	0.59	N/A	0.69	ns
		XC7K410T	0.60	0.74	0.79	N/A	0.91	ns
		XC7K420T	0.60	0.74	0.79	N/A	0.91	ns
		XC7K480T	0.60	0.74	0.79	N/A	0.91	ns
		XQ7K325T	N/A	0.74	0.79	0.79	0.91	ns
XQ7K410T	N/A	0.74	0.79	0.79	0.91	ns		
T_{DCD_BUFIO}	I/O clock tree duty cycle distortion	All	0.12	0.12	0.12	0.12	0.12	ns
T_{BUFIO_SKEW}	I/O clock tree skew across one clock region	All	0.02	0.02	0.02	0.02	0.03	ns
T_{DCD_BUFR}	Regional clock tree duty cycle distortion	All	0.15	0.15	0.15	0.15	0.15	ns

Notes:

1. These parameters represent the worst-case duty cycle distortion observable at the I/O flip flops. For all I/O standards, IBIS can be used to calculate any additional duty cycle distortion that might be caused by asymmetrical rise/fall times.
2. The T_{CKSKEW} value represents the worst-case clock-tree skew observable between sequential I/O elements. Significantly less clock-tree skew exists for I/O registers that are close to each other and fed by the same or adjacent clock-tree branches. Use the Xilinx Timing Analyzer tools to evaluate clock skew specific to your application.

MMCM Switching Characteristics

Table 39: MMCM Specification

Symbol	Description	Speed Grade					Units
		1.0V				0.9V	
		-3	-2/-2L	-1	-1M	-2L	
MMCM_F _{INMAX}	Maximum Input Clock Frequency	1066.00	933.00	800.00	800.00	800.00	MHz
MMCM_F _{INMIN}	Minimum Input Clock Frequency	10.00	10.00	10.00	10.00	10.00	MHz
MMCM_F _{INJITTER}	Maximum Input Clock Period Jitter	< 20% of clock input period or 1 ns Max					
MMCM_F _{INDUTY}	Allowable Input Duty Cycle: 10–49 MHz	25.00	25.00	25.00	25.00	25.00	%
	Allowable Input Duty Cycle: 50–199 MHz	30.00	30.00	30.00	30.00	30.00	%
	Allowable Input Duty Cycle: 200–399 MHz	35.00	35.00	35.00	35.00	35.00	%
	Allowable Input Duty Cycle: 400–499 MHz	40.00	40.00	40.00	40.00	40.00	%
	Allowable Input Duty Cycle: >500 MHz	45.00	45.00	45.00	45.00	45.00	%
MMCM_F _{MIN_PSCLK}	Minimum Dynamic Phase Shift Clock Frequency	0.01	0.01	0.01	0.01	0.01	MHz
MMCM_F _{MAX_PSCLK}	Maximum Dynamic Phase Shift Clock Frequency	550.00	500.00	450.00	450.00	450.00	MHz
MMCM_F _{VCOMIN}	Minimum MMCM VCO Frequency	600.00	600.00	600.00	600.00	600.00	MHz
MMCM_F _{VCOMAX}	Maximum MMCM VCO Frequency	1600.00	1440.00	1200.00	1200.00	1200.00	MHz
MMCM_F _{BANDWIDTH}	Low MMCM Bandwidth at Typical ⁽¹⁾	1.00	1.00	1.00	1.00	1.00	MHz
	High MMCM Bandwidth at Typical ⁽¹⁾	4.00	4.00	4.00	4.00	4.00	MHz
MMCM_T _{STATPHAOFFSET}	Static Phase Offset of the MMCM Outputs ⁽²⁾	0.12	0.12	0.12	0.12	0.12	ns
MMCM_T _{OUTJITTER}	MMCM Output Jitter	Note 3					
MMCM_T _{OUTDUTY}	MMCM Output Clock Duty Cycle Precision ⁽⁴⁾	0.20	0.20	0.20	0.20	0.25	ns
MMCM_T _{LOCKMAX}	MMCM Maximum Lock Time	100.00	100.00	100.00	100.00	100.00	µs
MMCM_F _{OUTMAX}	MMCM Maximum Output Frequency	1066.00	933.00	800.00	800.00	800.00	MHz
MMCM_F _{OUTMIN}	MMCM Minimum Output Frequency ⁽⁵⁾⁽⁶⁾	4.69	4.69	4.69	4.69	4.69	MHz
MMCM_T _{EXTFDVAR}	External Clock Feedback Variation	< 20% of clock input period or 1 ns Max					
MMCM_RST _{MINPULSE}	Minimum Reset Pulse Width	5.00	5.00	5.00	5.00	5.00	ns
MMCM_F _{PFDMAX}	Maximum Frequency at the Phase Frequency Detector	550.00	500.00	450.00	450.00	450.00	MHz
MMCM_F _{PFDMIN}	Minimum Frequency at the Phase Frequency Detector	10.00	10.00	10.00	10.00	10.00	MHz
MMCM_T _{FBDELAY}	Maximum Delay in the Feedback Path	3 ns Max or one CLKIN cycle					
MMCM Switching Characteristics Setup and Hold							
T _{MMCMDCK_PSEN} / T _{MMCMCKD_PSEN}	Setup and Hold of Phase Shift Enable	1.04/0.00	1.04/0.00	1.04/0.00	1.04/0.00	1.04/0.00	ns
T _{MMCMDCK_PSINCDEC} / T _{MMCMCKD_PSINCDEC}	Setup and Hold of Phase Shift Increment/Decrement	1.04/0.00	1.04/0.00	1.04/0.00	1.04/0.00	1.04/0.00	ns
T _{MMCMCKO_PSDONE}	Phase Shift Clock-to-Out of PSDONE	0.59	0.68	0.81	0.81	0.78	ns
Dynamic Reconfiguration Port (DRP) for MMCM Before and After DCLK							
T _{MMCMDCK_DADDR} / T _{MMCMCKD_DADDR}	DADDR Setup/Hold	1.25/0.15	1.40/0.15	1.63/0.15	1.63/0.15	1.43/0.00	ns, Min

Table 39: MMCM Specification (Cont'd)

Symbol	Description	Speed Grade					Units
		1.0V				0.9V	
		-3	-2/-2L	-1	-1M	-2L	
$T_{MMCMDCK_DI}/T_{MMCMCKD_DI}$	DI Setup/Hold	1.25/0.15	1.40/0.15	1.63/0.15	1.63/0.15	1.43/0.00	ns, Min
$T_{MMCMDCK_DEN}/T_{MMCMCKD_DEN}$	DEN Setup/Hold	1.76/0.00	1.97/0.00	2.29/0.00	2.29/0.00	2.40/0.00	ns, Min
$T_{MMCMDCK_DWE}/T_{MMCMCKD_DWE}$	DWE Setup/Hold	1.25/0.15	1.40/0.15	1.63/0.15	1.63/0.15	1.43/0.00	ns, Min
$T_{MMCMCKO_DRDY}$	CLK to out of DRDY	0.65	0.72	0.99	0.99	0.70	ns, Max
F_{DCK}	DCLK frequency	200.00	200.00	200.00	200.00	100.00	MHz, Max

Notes:

1. The MMCM does not filter typical spread-spectrum input clocks because they are usually far below the bandwidth filter frequencies.
2. The static offset is measured between any MMCM outputs with identical phase.
3. Values for this parameter are available in the Clocking Wizard.
See www.xilinx.com/products/intellectual-property/clocking_wizard.htm.
4. Includes global clock buffer.
5. Calculated as $F_{VCO}/128$ assuming output duty cycle is 50%.
6. When $CLKOUT4_CASCADE = TRUE$, $MMCM_F_{OUTMIN}$ is 0.036 MHz.

PLL Switching Characteristics

Table 40: PLL Specification

Symbol	Description	Speed Grade					Units
		1.0V				0.9V	
		-3	-2/-2L	-1	-1M	-2L	
PLL_F_{INMAX}	Maximum Input Clock Frequency	1066.00	933.00	800.00	800.00	800.00	MHz
PLL_F_{INMIN}	Minimum Input Clock Frequency	19.00	19.00	19.00	19.00	19.00	MHz
$PLL_F_{INJITTER}$	Maximum Input Clock Period Jitter	< 20% of clock input period or 1 ns Max					
PLL_F_{INDUTY}	Allowable Input Duty Cycle: 19–49 MHz	25.00	25.00	25.00	25.00	25.00	%
	Allowable Input Duty Cycle: 50–199 MHz	30.00	30.00	30.00	30.00	30.00	%
	Allowable Input Duty Cycle: 200–399 MHz	35.00	35.00	35.00	35.00	35.00	%
	Allowable Input Duty Cycle: 400–499 MHz	40.00	40.00	40.00	40.00	40.00	%
	Allowable Input Duty Cycle: >500 MHz	45.00	45.00	45.00	45.00	45.00	%
PLL_F_{VCOMIN}	Minimum PLL VCO Frequency	800.00	800.00	800.00	800.00	800.00	MHz
PLL_F_{VCOMAX}	Maximum PLL VCO Frequency	2133.00	1866.00	1600.00	1600.00	1600.00	MHz
$PLL_F_{BANDWIDTH}$	Low PLL Bandwidth at Typical ⁽¹⁾	1.00	1.00	1.00	1.00	1.00	MHz
	High PLL Bandwidth at Typical ⁽¹⁾	4.00	4.00	4.00	4.00	4.00	MHz
$PLL_T_{STATPHAOFFSET}$	Static Phase Offset of the PLL Outputs ⁽²⁾	0.12	0.12	0.12	0.12	0.12	ns
$PLL_T_{OUTJITTER}$	PLL Output Jitter	Note 3					
$PLL_T_{OUTDUTY}$	PLL Output Clock Duty Cycle Precision ⁽⁴⁾	0.20	0.20	0.20	0.20	0.25	ns
$PLL_T_{LOCKMAX}$	PLL Maximum Lock Time	100	100	100	100	100	μs
PLL_F_{OUTMAX}	PLL Maximum Output Frequency	1066.00	933.00	800.00	800.00	800.00	MHz
PLL_F_{OUTMIN}	PLL Minimum Output Frequency ⁽⁵⁾	6.25	6.25	6.25	6.25	6.25	MHz
$PLL_T_{EXTFDVAR}$	External Clock Feedback Variation	< 20% of clock input period or 1 ns Max					
$PLL_RST_{MINPULSE}$	Minimum Reset Pulse Width	5.00	5.00	5.00	5.00	5.00	ns

Table 40: PLL Specification (Cont'd)

Symbol	Description	Speed Grade					Units
		1.0V				0.9V	
		-3	-2/-2L	-1	-1M	-2L	
PLL_F _{PFD} MAX	Maximum Frequency at the Phase Frequency Detector	550.00	500.00	450.00	450.00	450.00	MHz
PLL_F _{PFD} MIN	Minimum Frequency at the Phase Frequency Detector	19.00	19.00	19.00	19.00	19.00	MHz
PLL_T _{FB} DELAY	Maximum Delay in the Feedback Path	3 ns Max or one CLKIN cycle					
Dynamic Reconfiguration Port (DRP) for PLL Before and After DCLK							
T _{PLLCK_DADDR} / T _{PLLCKC_DADDR}	Setup and hold of D address	1.25/0.15	1.40/0.15	1.63/0.15	1.63/0.15	1.43/0.00	ns, Min
T _{PLLCK_DI} / T _{PLLCKC_DI}	Setup and hold of D input	1.25/0.15	1.40/0.15	1.63/0.15	1.63/0.15	1.43/0.00	ns, Min
T _{PLLCK_DEN} / T _{PLLCKC_DEN}	Setup and hold of D enable	1.76/0.00	1.97/0.00	2.29/0.00	2.29/0.00	2.40/0.00	ns, Min
T _{PLLCK_DWE} / T _{PLLCKC_DWE}	Setup and hold of D write enable	1.25/0.15	1.40/0.15	1.63/0.15	1.63/0.15	1.43/0.00	ns, Min
T _{PLLCKO_DRDY}	CLK to out of DRDY	0.65	0.72	0.99	0.99	0.70	ns, Max
F _{DCK}	DCLK frequency	200.00	200.00	200.00	200.00	100.00	MHz, Max

Notes:

1. The PLL does not filter typical spread-spectrum input clocks because they are usually far below the bandwidth filter frequencies.
2. The static offset is measured between any PLL outputs with identical phase.
3. Values for this parameter are available in the Clocking Wizard.
See www.xilinx.com/products/intellectual-property/clocking_wizard.htm.
4. Includes global clock buffer.
5. Calculated as $F_{VCO}/128$ assuming output duty cycle is 50%.

Device Pin-to-Pin Output Parameter Guidelines

Table 41: Clock-Capable Clock Input to Output Delay Without MMCM/PLL (Near Clock Region)

Symbol	Description	Device	Speed Grade					Units
			1.0V				0.9V	
			-3	-2/-2L	-1	-1M	-2L	
SSTL15 Clock-Capable Clock Input to Output Delay using Output Flip-Flop, Fast Slew Rate, <i>without</i> MMCM/PLL.								
T _{ICKOFF}	Clock-capable clock input and OUTFF <i>without</i> MMCM/PLL (near clock region)	XC7K70T	4.98	5.49	6.17	N/A	7.04	ns
		XC7K160T	5.23	5.77	6.48	N/A	7.38	ns
		XC7K325T	5.72	6.31	7.09	N/A	8.07	ns
		XC7K355T	5.34	5.87	6.57	N/A	7.51	ns
		XC7K410T	5.84	6.44	7.22	N/A	8.21	ns
		XC7K420T	5.50	6.04	6.77	N/A	7.73	ns
		XC7K480T	5.50	6.04	6.77	N/A	7.73	ns
		XQ7K325T	N/A	6.31	7.09	7.09	8.07	ns
		XQ7K410T	N/A	6.44	7.22	7.22	8.21	ns

Notes:

- Listed above are representative values where one global clock input drives one vertical clock line in each accessible column, and where all accessible IOB and CLB flip-flops are clocked by the global clock net.

Table 42: Clock-Capable Clock Input to Output Delay Without MMCM/PLL (Far Clock Region)

Symbol	Description	Device	Speed Grade					Units
			1.0V				0.9V	
			-3	-2/-2L	-1	-1M	-2L	
SSTL15 Clock-Capable Clock Input to Output Delay using Output Flip-Flop, Fast Slew Rate, <i>without</i> MMCM/PLL.								
T _{ICKOFFAR}	Clock-capable clock input and OUTFF <i>without</i> MMCM/PLL (far clock region)	XC7K70T	5.29	5.83	6.55	N/A	7.47	ns
		XC7K160T	5.84	6.45	7.24	N/A	8.24	ns
		XC7K325T	6.33	6.99	7.84	N/A	8.92	ns
		XC7K355T	5.95	6.55	7.32	N/A	8.36	ns
		XC7K410T	6.45	7.12	7.97	N/A	9.07	ns
		XC7K420T	6.41	7.06	7.90	N/A	9.01	ns
		XC7K480T	6.41	7.06	7.90	N/A	9.01	ns
		XQ7K325T	N/A	6.99	7.84	7.84	8.92	ns
		XQ7K410T	N/A	7.12	7.97	7.97	9.07	ns

Notes:

- Listed above are representative values where one global clock input drives one vertical clock line in each accessible column, and where all accessible IOB and CLB flip-flops are clocked by the global clock net.

Table 43: Clock-Capable Clock Input to Output Delay With MMCM

Symbol	Description	Device	Speed Grade					Units
			1.0V				0.9V	
			-3	-2/-2L	-1	-1M	-2L	
SSTL15 Clock-Capable Clock Input to Output Delay using Output Flip-Flop, Fast Slew Rate, with MMCM.								
T _{ICKOFMMCMCC}	Clock-capable clock input and OUTFF with MMCM	XC7K70T	0.95	0.95	0.95	N/A	1.74	ns
		XC7K160T	0.96	0.96	0.96	N/A	1.78	ns
		XC7K325T	1.00	1.00	1.00	N/A	1.82	ns
		XC7K355T	1.00	1.00	1.00	N/A	1.78	ns
		XC7K410T	1.00	1.00	1.00	N/A	1.82	ns
		XC7K420T	1.07	1.07	1.07	N/A	1.82	ns
		XC7K480T	1.07	1.07	1.07	N/A	1.82	ns
		XQ7K325T	N/A	1.00	1.00	1.00	1.82	ns
		XQ7K410T	N/A	1.00	1.00	1.00	1.82	ns

Notes:

1. Listed above are representative values where one global clock input drives one vertical clock line in each accessible column, and where all accessible IOB and CLB flip-flops are clocked by the global clock net.
2. MMCM output jitter is already included in the timing calculation.

Table 44: Clock-Capable Clock Input to Output Delay With PLL

Symbol	Description	Device	Speed Grade					Units
			1.0V				0.9V	
			-3	-2/-2L	-1	-1M	-2L	
SSTL15 Clock-Capable Clock Input to Output Delay using Output Flip-Flop, Fast Slew Rate, with PLL.								
T _{ICKOFPLLCC}	Clock-capable clock input and OUTFF with PLL	XC7K70T	0.84	0.84	0.84	N/A	1.45	ns
		XC7K160T	0.89	0.89	0.89	N/A	1.54	ns
		XC7K325T	0.89	0.89	0.89	N/A	1.54	ns
		XC7K355T	0.89	0.89	0.89	N/A	1.50	ns
		XC7K410T	0.89	0.89	0.89	N/A	1.54	ns
		XC7K420T	0.96	0.96	0.96	N/A	1.54	ns
		XC7K480T	0.96	0.96	0.96	N/A	1.54	ns
		XQ7K325T	N/A	0.89	0.89	0.89	1.54	ns
		XQ7K410T	N/A	0.89	0.89	0.89	1.54	ns

Notes:

1. Listed above are representative values where one global clock input drives one vertical clock line in each accessible column, and where all accessible IOB and CLB flip-flops are clocked by the global clock net.
2. PLL output jitter is already included in the timing calculation.

Table 45: Pin-to-Pin, Clock-to-Out using BUFIO

Symbol	Description	Speed Grade					Units
		1.0V				0.9V	
		-3	-2/-2L	-1	-1M	-2L	
SSTL15 Clock-Capable Clock Input to Output Delay using Output Flip-Flop, Fast Slew Rate, with BUFIO.							
T _{ICKOFCS}	Clock-to-Out of I/O clock for HR I/O banks	4.93	5.52	6.20	6.20	6.97	ns
	Clock-to-Out of I/O clock for HP I/O banks	4.85	5.44	6.11	6.11	6.90	ns

Device Pin-to-Pin Input Parameter Guidelines

Table 46: Global Clock Input Setup and Hold Without MMCM/PLL with ZHOLD_DELAY on HR I/O Banks

Symbol	Description	Device	Speed Grade					Units
			1.0V				0.9V	
			-3	-2/-2L	-1	-1M	-2L	
Input Setup and Hold Time Relative to Global Clock Input Signal for SSTL15 Standard. ⁽¹⁾								
T _{PSFD} /T _{PHFD}	Full Delay (Legacy Delay or Default Delay) Global Clock Input and IFF ⁽²⁾ without MMCM/PLL with ZHOLD_DELAY on HR I/O Banks	XC7K70T	2.83/-0.29	2.95/-0.29	3.15/-0.29	N/A	4.96/-0.33	ns
		XC7K160T	3.17/-0.35	3.29/-0.35	3.55/-0.35	N/A	5.54/-0.49	ns
		XC7K325T	2.83/-0.06	2.94/-0.06	3.15/-0.06	N/A	5.18/-0.14	ns
		XC7K355T	3.26/-0.32	3.41/-0.32	3.67/-0.32	N/A	5.84/-0.49	ns
		XC7K410T	3.43/-0.34	3.59/-0.34	3.88/-0.34	N/A	6.21/-0.54	ns
		XC7K420T	3.37/-0.27	3.48/-0.27	3.76/-0.27	N/A	6.00/-0.52	ns
		XC7K480T	3.37/-0.27	3.48/-0.27	3.76/-0.27	N/A	6.00/-0.52	ns
		XQ7K325T	N/A	2.94/-0.06	3.15/-0.06	3.15/-0.06	5.18/-0.14	ns
		XQ7K410T	N/A	3.59/-0.34	3.88/-0.34	3.88/-0.34	6.21/-0.54	ns

Notes:

- Setup and Hold times are measured over worst case conditions (process, voltage, temperature). Setup time is measured relative to the Global Clock input signal using the slowest process, highest temperature, and lowest voltage. Hold time is measured relative to the Global Clock input signal using the fastest process, lowest temperature, and highest voltage.
- IFF = Input Flip-Flop or Latch.

Table 47: Clock-Capable Clock Input Setup and Hold With MMCM

Symbol	Description	Device	Speed Grade					Units
			1.0V				0.9V	
			-3	-2/-2L	-1	-1M	-2L	
Input Setup and Hold Time Relative to Global Clock Input Signal for SSTL15 Standard. ⁽¹⁾								
T _{PSMMCMCC} / T _{PHMMCMCC}	No Delay clock-capable clock input and IFF ⁽²⁾ with MMCM	XC7K70T	2.39/-0.22	2.65/-0.22	2.94/-0.22	N/A	2.21/-0.44	ns
		XC7K160T	2.49/-0.20	2.77/-0.20	3.07/-0.20	N/A	2.38/-0.47	ns
		XC7K325T	2.55/-0.16	2.85/-0.16	3.14/-0.16	N/A	2.60/-0.47	ns
		XC7K355T	2.43/-0.16	2.73/-0.16	3.00/-0.16	N/A	2.47/-0.43	ns
		XC7K410T	2.55/-0.16	2.84/-0.16	3.14/-0.16	N/A	2.58/-0.47	ns
		XC7K420T	2.47/-0.09	2.73/-0.09	3.02/-0.09	N/A	2.40/-0.41	ns
		XC7K480T	2.47/-0.09	2.73/-0.09	3.02/-0.09	N/A	2.40/-0.41	ns
		XQ7K325T	N/A	2.85/-0.16	3.14/-0.16	3.14/-0.16	2.60/-0.47	ns
		XQ7K410T	N/A	2.84/-0.16	3.14/-0.16	3.14/-0.16	2.58/-0.47	ns

Notes:

- Setup and Hold times are measured over worst case conditions (process, voltage, temperature). Setup time is measured relative to the Global Clock input signal using the slowest process, highest temperature, and lowest voltage. Hold time is measured relative to the Global Clock input signal using the fastest process, lowest temperature, and highest voltage.
- IFF = Input Flip-Flop or Latch
- Use IBIS to determine any duty-cycle distortion incurred using various standards.

Table 48: Clock-Capable Clock Input Setup and Hold With PLL

Symbol	Description	Device	Speed Grade					Units
			1.0V				0.9V	
			-3	-2/-2L	-1	-1M	-2L	
Input Setup and Hold Time Relative to Clock-Capable Clock Input Signal for SSTL15 Standard. ⁽¹⁾								
T _{PSPLLCC} / T _{PHPLLCC}	No Delay clock-capable clock input and IFF ⁽²⁾ with PLL	XC7K70T	2.75/-0.32	3.04/-0.32	3.33/-0.32	N/A	2.42/-0.54	ns
		XC7K160T	2.85/-0.31	3.16/-0.31	3.46/-0.31	N/A	2.59/-0.56	ns
		XC7K325T	2.91/-0.27	3.24/-0.27	3.54/-0.27	N/A	2.80/-0.56	ns
		XC7K355T	2.79/-0.27	3.12/-0.27	3.40/-0.27	N/A	2.67/-0.52	ns
		XC7K410T	2.91/-0.27	3.24/-0.27	3.53/-0.27	N/A	2.78/-0.56	ns
		XC7K420T	2.83/-0.20	3.12/-0.20	3.41/-0.20	N/A	2.61/-0.50	ns
		XC7K480T	2.83/-0.20	3.12/-0.20	3.41/-0.20	N/A	2.61/-0.50	ns
		XQ7K325T	N/A	3.24/-0.27	3.54/-0.27	3.54/-0.27	2.80/-0.56	ns
		XQ7K410T	N/A	3.24/-0.27	3.53/-0.27	3.53/-0.27	2.78/-0.56	ns

Notes:

- Setup and Hold times are measured over worst case conditions (process, voltage, temperature). Setup time is measured relative to the Global Clock input signal using the slowest process, highest temperature, and lowest voltage. Hold time is measured relative to the Global Clock input signal using the fastest process, lowest temperature, and highest voltage.
- IFF = Input Flip-Flop or Latch
- Use IBIS to determine any duty-cycle distortion incurred using various standards.

Table 49: Data Input Setup and Hold Times Relative to a Forwarded Clock Input Pin Using BUFIO

Symbol	Description	Speed Grade					Units
		1.0V				0.9V	
		-3	-2/-2L	-1	-1M	-2L	
Input Setup and Hold Time Relative to a Forwarded Clock Input Pin Using BUFIO for SSTL15 Standard.							
T _{PSCS} /T _{PHCS}	Setup/Hold of I/O clock for HR I/O banks	-0.36/1.36	-0.36/1.50	-0.36/1.70	-0.36/1.70	-0.44/1.87	ns
	Setup/Hold of I/O clock for HP I/O banks	-0.34/1.39	-0.34/1.53	-0.34/1.73	-0.34/1.73	-0.44/1.87	ns

Table 50: Sample Window

Symbol	Description	Speed Grade					Units
		1.0V				0.9V	
		-3	-2/-2L	-1	-1M	-2L	
T _{SAMP}	Sampling Error at Receiver Pins ⁽¹⁾	0.51	0.56	0.61	0.61	0.56	ns
T _{SAMP_BUFIO}	Sampling Error at Receiver Pins using BUFIO ⁽²⁾	0.30	0.35	0.40	0.40	0.35	ns

Notes:

- This parameter indicates the total sampling error of the Kintex-7 FPGAs DDR input registers, measured across voltage, temperature, and process. The characterization methodology uses the MMCM to capture the DDR input registers' edges of operation. These measurements include:
 - CLK0 MMCM jitter
 - MMCM accuracy (phase offset)
 - MMCM phase shift resolution
 These measurements do not include package or clock tree skew.
- This parameter indicates the total sampling error of the Kintex-7 FPGAs DDR input registers, measured across voltage, temperature, and process. The characterization methodology uses the BUFIO clock network and IDELAY to capture the DDR input registers' edges of operation. These measurements do not include package or clock tree skew.

Additional Package Parameter Guidelines

The parameters in this section provide the necessary values for calculating timing budgets for Kintex-7 FPGA clock transmitter and receiver data-valid windows.

Table 51: Package Skew

Symbol	Description	Device	Package	Value	Units	
T _{PKGSKEW}	Package Skew ⁽¹⁾	XC7K70T	FBG484	108	ps	
			FBG676	135	ps	
		XC7K160T	FBG484	118	ps	
			FBG676	136	ps	
			FFG676	161	ps	
		XC7K325T	FBG676	146	ps	
			FFG676	154	ps	
			FBG900	163	ps	
			FFG900	161	ps	
		XC7K355T		FFG901	149	ps
		XC7K410T	FBG676	165	ps	
			FFG676	168	ps	
			FBG900	151	ps	
			FFG900	146	ps	
		XC7K420T	FFG901	149	ps	
			FFG1156	145	ps	
		XC7K480T	FFG901	149	ps	
			FFG1156	145	ps	
		XQ7K325T	RF676	154	ps	
			RF900	161	ps	
XQ7K410T	RF676	168	ps			
	RF900	146	ps			

Notes:

1. These values represent the worst-case skew between any two SelectIO resources in the package: shortest delay to longest delay from die pad to ball.
2. Package delay information is available for these device/package combinations. This information can be used to deskew the package.

GTX Transceiver Specifications

GTX Transceiver DC Input and Output Levels

Table 52 summarizes the DC output specifications of the GTX transceivers in Kintex-7 FPGAs. Consult the *7 Series FPGAs GTX/GTH Transceivers User Guide* (UG476) for further details.

Table 52: GTX Transceiver DC Specifications

Symbol	DC Parameter	Conditions	Min	Typ	Max	Units
DV _{PPOUT}	Differential peak-to-peak output voltage ⁽¹⁾	Transmitter output swing is set to maximum setting	–	–	1000	mV
V _{CMOUTDC}	DC common mode output voltage.	Equation based	$V_{MGTAVTT} - DV_{PPOUT}/4$			mV
R _{OUT}	Differential output resistance		–	100	–	Ω
T _{OSKEW}	Transmitter output pair (TXP and TXN) intra-pair skew		–	2	12	ps
DV _{PPIN}	Differential peak-to-peak input voltage (external AC coupled)	>10.3125 Gb/s	150	–	1250	mV
		6.6 Gb/s to 10.3125 Gb/s	150	–	1250	mV
		≤ 6.6 Gb/s	150	–	2000	mV
V _{IN}	Absolute input voltage	DC coupled V _{MGTAVTT} = 1.2V	–200	–	V _{MGTAVTT}	mV
V _{CMIN}	Common mode input voltage	DC coupled V _{MGTAVTT} = 1.2V	–	2/3 V _{MGTAVTT}	–	mV
R _{IN}	Differential input resistance		–	100	–	Ω
C _{EXT}	Recommended external AC coupling capacitor ⁽²⁾		–	100	–	nF

Notes:

1. The output swing and preemphasis levels are programmable using the attributes discussed in the *7 Series FPGAs GTX/GTH Transceivers User Guide* (UG476) and can result in values lower than reported in this table.
2. Other values can be used as appropriate to conform to specific protocols and standards.

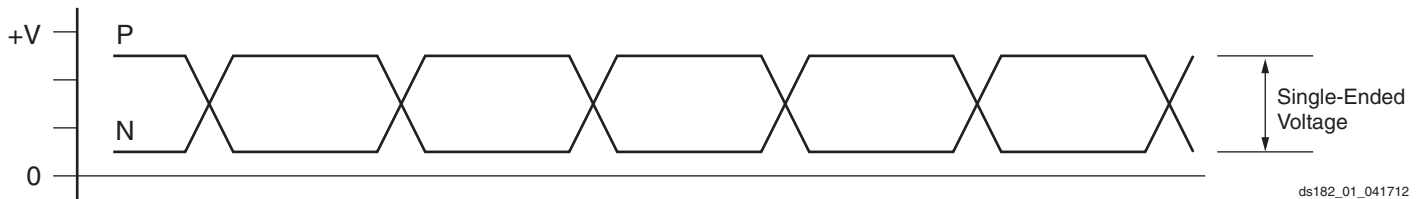


Figure 1: Single-Ended Peak-to-Peak Voltage

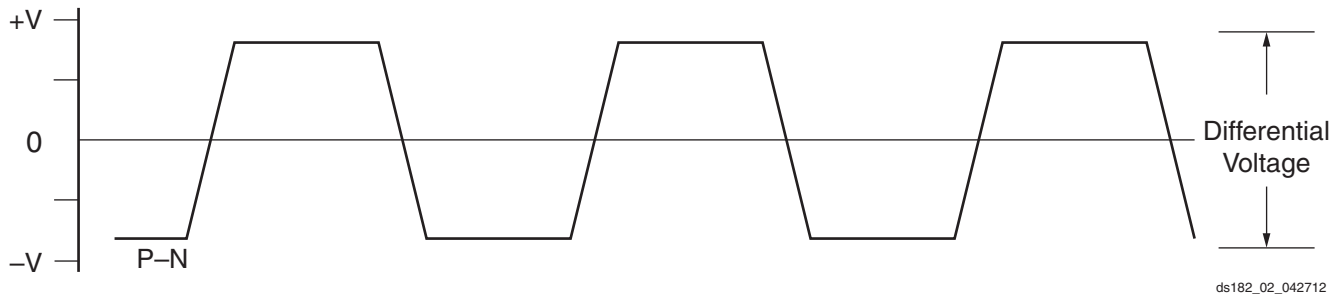


Figure 2: Differential Peak-to-Peak Voltage

Table 53 summarizes the DC specifications of the clock input of the GTX transceiver. Consult the *7 Series FPGAs GTX/GTH Transceivers User Guide* (UG476) for further details.

Table 53: GTX Transceiver Clock DC Input Level Specification

Symbol	DC Parameter	Min	Typ	Max	Units
V _{IDIFF}	Differential peak-to-peak input voltage	250	–	2000	mV
R _{IN}	Differential input resistance	–	100	–	Ω
C _{EXT}	Required external AC coupling capacitor	–	100	–	nF

GTX Transceiver Switching Characteristics

Consult the *7 Series FPGAs GTX/GTH Transceivers User Guide* (UG476) for further information.

Table 54: GTX Transceiver Performance

Symbol	Description	Output Divider	Speed Grade								Units
			1.0V				0.9V				
			-3		-2/-2L		-1/-1M ⁽¹⁾		-2L ⁽²⁾		
			Package Type								
FF		FB		FF RF		FB		FF RF		FB	
F _{GTXMAX} ⁽³⁾	Maximum GTX transceiver data rate		12.5	6.6	10.3125	6.6	8.0	6.6	6.6	6.6	Gb/s
F _{GTXMIN} ⁽³⁾	Minimum GTX transceiver data rate		0.500	0.500	0.500	0.500	0.500	0.500	0.500	0.500	Gb/s
F _{GTXCRANGE}	CPLL line rate range	1	3.2–6.6								Gb/s
		2	1.6–3.3								Gb/s
		4	0.8–1.65								Gb/s
		8	0.5–0.825								Gb/s
		16	N/A								Gb/s
F _{GTXQRANGE1}	QPLL line rate range 1	1	5.93–8.0	5.93–6.6	5.93–8.0	5.93–6.6	5.93–8.0	5.93–6.6	5.93–6.6	Gb/s	
		2	2.965–4.0		2.965–4.0		2.965–4.0		2.965–3.3		Gb/s
		4	1.4825–2.0		1.4825–2.0		1.4825–2.0		1.4825–1.65		Gb/s
		8	0.74125–1.0		0.74125–1.0		0.74125–1.0		0.74125–0.825		Gb/s
		16	N/A		N/A		N/A		N/A		Gb/s
F _{GTXQRANGE2}	QPLL line rate range 2 ⁽⁴⁾	1	9.8–12.5	N/A	9.8–10.3125	N/A	N/A		N/A		Gb/s
		2	4.9–6.25		4.9–5.15625		N/A		N/A		Gb/s
		4	2.45–3.125		2.45–2.578125		N/A		N/A		Gb/s
		8	1.225–1.5625		1.225–1.2890625		N/A		N/A		Gb/s
		16	0.6125–0.78125		0.6125–0.64453125		N/A		N/A		Gb/s
F _{GCPLL} RANGE	GTX transceiver CPLL frequency range		1.6–3.3		1.6–3.3		1.6–3.3		1.6–3.3		GHz
F _{GQPLL} RANGE1	GTX transceiver QPLL frequency range 1		5.93–8.0		5.93–8.0		5.93–8.0		5.93–6.6		GHz

Table 54: GTX Transceiver Performance (Cont'd)

Symbol	Description	Output Divider	Speed Grade								Units
			1.0V				0.9V				
			-3		-2/-2L		-1/-1M ⁽¹⁾		-2L ⁽²⁾		
			Package Type								
FF		FB		FF RF		FB		FF RF		FB	
F _{GQPLL} RANGE2	GTX transceiver QPLL frequency range 2		9.8–12.5		9.8–10.3125		N/A		N/A		GHz

Notes:

1. The -1 speed grade requires a 4-byte internal data width for operation above 5.0 Gb/s.
2. The -2L (0.9V) speed grade requires a 4-byte internal data width for operation above 3.8 Gb/s.
3. Data rates between 8.0 Gb/s and 9.8 Gb/s are not available.
4. For QPLL line rate range 2, the maximum line rate with the divider N set to 66 is 10.3125Gb/s.

Table 55: GTX Transceiver Dynamic Reconfiguration Port (DRP) Switching Characteristics

Symbol	Description	Speed Grade				Units
		1.0V		0.9V		
		-3	-2/-2L	-1/-1M	-2L	
F _{GTXDRPCLK}	GTXDRPCLK maximum frequency	175.01	175.01	156.25	125.00	MHz

Table 56: GTX Transceiver Reference Clock Switching Characteristics

Symbol	Description	Conditions	All Speed Grades			Units
			Min	Typ	Max	
F _{GCLK}	Reference clock frequency range	-3 speed grade	60	–	700	MHz
		All other speed grades	60	–	670	MHz
T _{RCLK}	Reference clock rise time	20% – 80%	–	200	–	ps
T _{FCLK}	Reference clock fall time	80% – 20%	–	200	–	ps
T _{DCREF}	Reference clock duty cycle	Transceiver PLL only	40	50	60	%

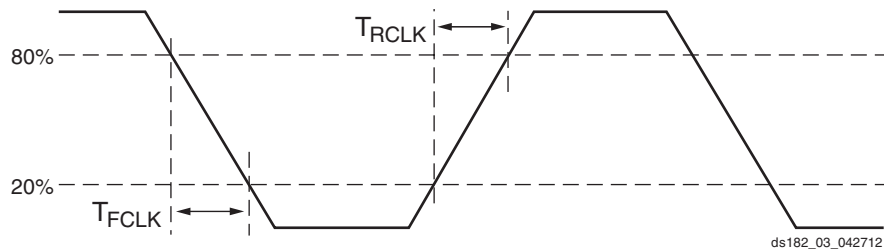


Figure 3: Reference Clock Timing Parameters

Table 57: GTX Transceiver PLL /Lock Time Adaptation

Symbol	Description	Conditions	All Speed Grades			Units
			Min	Typ	Max	
T _{LOCK}	Initial PLL lock		–	–	1	ms
T _{DLOCK}	Clock recovery phase acquisition and adaptation time for decision feedback equalizer (DFE).	After the PLL is locked to the reference clock, this is the time it takes to lock the clock data recovery (CDR) to the data present at the input.	–	50,000	37 x10 ⁶	UI
	Clock recovery phase acquisition and adaptation time for low-power mode (LPM) when the DFE is disabled.		–	50,000	2.3 x10 ⁶	UI

Table 58: GTX Transceiver User Clock Switching Characteristics⁽¹⁾⁽²⁾

Symbol	Description	Conditions	Speed Grade				Units
			1.0V			0.9V	
			-3 ⁽³⁾	-2/-2L ⁽³⁾	-1/-1M ⁽⁴⁾	-2L ⁽⁵⁾	
F _{TXOUT}	TXOUTCLK maximum frequency		412.500	412.500	312.500	237.500	MHz
F _{RXOUT}	RXOUTCLK maximum frequency		412.500	412.500	312.500	237.500	MHz
F _{TXIN}	TXUSRCLK maximum frequency	16-bit data path	412.500	412.500	312.500	237.500	MHz
		32-bit data path	390.625	322.266	250.000	206.250	MHz
F _{RXIN}	RXUSRCLK maximum frequency	16-bit data path	412.500	412.500	312.500	237.500	MHz
		32-bit data path	390.625	322.266	250.000	206.250	MHz
F _{TXIN2}	TXUSRCLK2 maximum frequency	16-bit data path	412.500	412.500	312.500	237.500	MHz
		32-bit data path	390.625	322.266	250.000	206.250	MHz
		64-bit data path	195.313	161.133	125.000	103.125	MHz
F _{RXIN2}	RXUSRCLK2 maximum frequency	16-bit data path	412.500	412.500	312.500	237.500	MHz
		32-bit data path	390.625	322.266	250.000	206.250	MHz
		64-bit data path	195.313	161.133	125.000	103.125	MHz

Notes:

1. Clocking must be implemented as described in the *7 Series FPGAs GTX/GTH Transceivers User Guide* ([UG476](#)).
2. These frequencies are not supported for all possible transceiver configurations.
3. For speed grades -3, -2, -2L (1.0V), a 16-bit data path can only be used for speeds less than 6.6 Gb/s.
4. For speed grade -1, a 16-bit data path can only be used for speeds less than 5.0 Gb/s.
5. For speed grade -2L (0.9V), a 16-bit data path can only be used for speeds less than 3.8 Gb/s.

Table 59: GTX Transceiver Transmitter Switching Characteristics

Symbol	Description	Condition	Min	Typ	Max	Units
F _{GTXTX}	Serial data rate range		0.500	–	F _{GTXTXMAX}	Gb/s
T _{RTX}	TX Rise time	20%–80%	–	40	–	ps
T _{FTX}	TX Fall time	80%–20%	–	40	–	ps
T _{LLSKEW}	TX lane-to-lane skew ⁽¹⁾		–	–	500	ps
V _{TXOOBVDDP}	Electrical idle amplitude		–	–	15	mV
T _{TXOOBTRANSITION}	Electrical idle transition time		–	–	140	ns
T _{J12.5}	Total Jitter ⁽²⁾⁽⁴⁾	12.5 Gb/s	–	–	0.28	UI
D _{J12.5}	Deterministic Jitter ⁽²⁾⁽⁴⁾		–	–	0.17	UI
T _{J11.18}	Total Jitter ⁽²⁾⁽⁴⁾	11.18 Gb/s	–	–	0.28	UI
D _{J11.18}	Deterministic Jitter ⁽²⁾⁽⁴⁾		–	–	0.17	UI

Table 59: GTX Transceiver Transmitter Switching Characteristics (Cont'd)

Symbol	Description	Condition	Min	Typ	Max	Units
TJ _{10.3125}	Total Jitter ⁽²⁾⁽⁴⁾	10.3125 Gb/s	–	–	0.28	UI
DJ _{10.3125}	Deterministic Jitter ⁽²⁾⁽⁴⁾		–	–	0.17	UI
TJ _{9.953}	Total Jitter ⁽²⁾⁽⁴⁾	9.953 Gb/s	–	–	0.28	UI
DJ _{9.953}	Deterministic Jitter ⁽²⁾⁽⁴⁾		–	–	0.17	UI
TJ _{9.8}	Total Jitter ⁽²⁾⁽⁴⁾	9.8 Gb/s	–	–	0.28	UI
DJ _{9.8}	Deterministic Jitter ⁽²⁾⁽⁴⁾		–	–	0.17	UI
TJ _{8.0}	Total Jitter ⁽²⁾⁽⁴⁾	8.0 Gb/s	–	–	0.30	UI
DJ _{8.0}	Deterministic Jitter ⁽²⁾⁽⁴⁾		–	–	0.15	UI
TJ _{6.6_QPLL}	Total Jitter ⁽²⁾⁽⁴⁾	6.6 Gb/s	–	–	0.28	UI
DJ _{6.6_QPLL}	Deterministic Jitter ⁽²⁾⁽⁴⁾		–	–	0.17	UI
TJ _{6.6_CPLL}	Total Jitter ⁽³⁾⁽⁴⁾	6.6 Gb/s	–	–	0.30	UI
DJ _{6.6_CPLL}	Deterministic Jitter ⁽³⁾⁽⁴⁾		–	–	0.15	UI
TJ _{5.0}	Total Jitter ⁽³⁾⁽⁴⁾	5.0 Gb/s	–	–	0.30	UI
DJ _{5.0}	Deterministic Jitter ⁽³⁾⁽⁴⁾		–	–	0.15	UI
TJ _{4.25}	Total Jitter ⁽³⁾⁽⁴⁾	4.25 Gb/s	–	–	0.30	UI
DJ _{4.25}	Deterministic Jitter ⁽³⁾⁽⁴⁾		–	–	0.15	UI
TJ _{3.75}	Total Jitter ⁽³⁾⁽⁴⁾	3.75 Gb/s	–	–	0.30	UI
DJ _{3.75}	Deterministic Jitter ⁽³⁾⁽⁴⁾		–	–	0.15	UI
TJ _{3.2}	Total Jitter ⁽³⁾⁽⁴⁾	3.20 Gb/s ⁽⁵⁾	–	–	0.2	UI
DJ _{3.2}	Deterministic Jitter ⁽³⁾⁽⁴⁾		–	–	0.1	UI
TJ _{3.2L}	Total Jitter ⁽³⁾⁽⁴⁾	3.20 Gb/s ⁽⁶⁾	–	–	0.32	UI
DJ _{3.2L}	Deterministic Jitter ⁽³⁾⁽⁴⁾		–	–	0.16	UI
TJ _{2.5}	Total Jitter ⁽³⁾⁽⁴⁾	2.5 Gb/s ⁽⁷⁾	–	–	0.20	UI
DJ _{2.5}	Deterministic Jitter ⁽³⁾⁽⁴⁾		–	–	0.08	UI
TJ _{1.25}	Total Jitter ⁽³⁾⁽⁴⁾	1.25 Gb/s ⁽⁸⁾	–	–	0.15	UI
DJ _{1.25}	Deterministic Jitter ⁽³⁾⁽⁴⁾		–	–	0.06	UI
TJ ₅₀₀	Total Jitter ⁽³⁾⁽⁴⁾	500 Mb/s	–	–	0.1	UI
DJ ₅₀₀	Deterministic Jitter ⁽³⁾⁽⁴⁾		–	–	0.03	UI

Notes:

- Using same REFCLK input with TX phase alignment enabled for up to 12 consecutive transmitters (three fully populated GTX Quads).
- Using QPLL_FBDIV = 40, 20-bit internal data width. These values are NOT intended for protocol specific compliance determinations.
- Using CPLL_FBDIV = 2, 20-bit internal data width. These values are NOT intended for protocol specific compliance determinations.
- All jitter values are based on a bit-error ratio of $1e^{-12}$.
- CPLL frequency at 3.2 GHz and TXOUT_DIV = 2.
- CPLL frequency at 1.6 GHz and TXOUT_DIV = 1.
- CPLL frequency at 2.5 GHz and TXOUT_DIV = 2.
- CPLL frequency at 2.5 GHz and TXOUT_DIV = 4.

Table 60: GTX Transceiver Receiver Switching Characteristics

Symbol	Description		Min	Typ	Max	Units
F _{GTXR}	Serial data rate		0.500	–	F _{GTXMAX}	Gb/s
T _{RXLECIDLE}	Time for RXLECIDLE to respond to loss or restoration of data		–	10	–	ns
RX _{OOBVDDPP}	OOB detect threshold peak-to-peak		60	–	150	mV
RX _{SST}	Receiver spread-spectrum tracking ⁽¹⁾	Modulated @ 33 KHz	–5000	–	0	ppm
RX _{RL}	Run length (CID)		–	–	512	UI
RX _{PPMTOL}	Data/REFCLK PPM offset tolerance	Bit rates ≤ 6.6 Gb/s	–1250	–	1250	ppm
		Bit rates > 6.6 Gb/s and ≤ 8.0 Gb/s	–700	–	700	ppm
		Bit rates > 8.0 Gb/s	–200	–	200	ppm
SJ Jitter Tolerance⁽²⁾						
JT_SJ _{12.5}	Sinusoidal Jitter (QPLL) ⁽³⁾	12.5 Gb/s	0.3	–	–	UI
JT_SJ _{11.18}	Sinusoidal Jitter (QPLL) ⁽³⁾	11.18 Gb/s	0.3	–	–	UI
JT_SJ _{10.32}	Sinusoidal Jitter (QPLL) ⁽³⁾	10.32 Gb/s	0.3	–	–	UI
JT_SJ _{9.95}	Sinusoidal Jitter (QPLL) ⁽³⁾	9.95 Gb/s	0.3	–	–	UI
JT_SJ _{9.8}	Sinusoidal Jitter (QPLL) ⁽³⁾	9.8 Gb/s	0.3	–	–	UI
JT_SJ _{8.0}	Sinusoidal Jitter (QPLL) ⁽³⁾	8.0 Gb/s	0.44	–	–	UI
JT_SJ _{6.6_QPLL}	Sinusoidal Jitter (QPLL) ⁽³⁾	6.6 Gb/s	0.48	–	–	UI
JT_SJ _{6.6_CPLL}	Sinusoidal Jitter (CPLL) ⁽³⁾	6.6 Gb/s	0.44	–	–	UI
JT_SJ _{5.0}	Sinusoidal Jitter (CPLL) ⁽³⁾	5.0 Gb/s	0.44	–	–	UI
JT_SJ _{4.25}	Sinusoidal Jitter (CPLL) ⁽³⁾	4.25 Gb/s	0.44	–	–	UI
JT_SJ _{3.75}	Sinusoidal Jitter (CPLL) ⁽³⁾	3.75 Gb/s	0.44	–	–	UI
JT_SJ _{3.2}	Sinusoidal Jitter (CPLL) ⁽³⁾	3.2 Gb/s ⁽⁴⁾	0.45	–	–	UI
JT_SJ _{3.2L}	Sinusoidal Jitter (CPLL) ⁽³⁾	3.2 Gb/s ⁽⁵⁾	0.45	–	–	UI
JT_SJ _{2.5}	Sinusoidal Jitter (CPLL) ⁽³⁾	2.5 Gb/s ⁽⁶⁾	0.5	–	–	UI
JT_SJ _{1.25}	Sinusoidal Jitter (CPLL) ⁽³⁾	1.25 Gb/s ⁽⁷⁾	0.5	–	–	UI
JT_SJ ₅₀₀	Sinusoidal Jitter (CPLL) ⁽³⁾	500 Mb/s	0.4	–	–	UI
SJ Jitter Tolerance with Stressed Eye⁽²⁾						
JT_TJSE _{3.2}	Total Jitter with Stressed Eye ⁽⁸⁾	3.2 Gb/s	0.70	–	–	UI
JT_TJSE _{6.6}		6.6 Gb/s	0.70	–	–	UI
JT_SJSE _{3.2}	Sinusoidal Jitter with Stressed Eye ⁽⁸⁾	3.2 Gb/s	0.1	–	–	UI
JT_SJSE _{6.6}		6.6 Gb/s	0.1	–	–	UI

Notes:

- Using RXOUT_DIV = 1, 2, and 4.
- All jitter values are based on a bit error ratio of 1e⁻¹².
- The frequency of the injected sinusoidal jitter is 10 MHz.
- CPLL frequency at 3.2 GHz and RXOUT_DIV = 2.
- CPLL frequency at 1.6 GHz and RXOUT_DIV = 1.
- CPLL frequency at 2.5 GHz and RXOUT_DIV = 2.
- CPLL frequency at 2.5 GHz and RXOUT_DIV = 4.
- Composite jitter with RX in LPM or DFE mode.

GTX Transceiver Protocol Jitter Characteristics

For Table 61 through Table 66, the 7 Series FPGAs GTX/GTH Transceivers User Guide (UG476) contains recommended settings for optimal usage of protocol specific characteristics.

Table 61: Gigabit Ethernet Protocol Characteristics

Description	Line Rate (Mb/s)	Min	Max	Units
Gigabit Ethernet Transmitter Jitter Generation				
Total transmitter jitter (T_TJ)	1250	–	0.24	UI
Gigabit Ethernet Receiver High Frequency Jitter Tolerance				
Total receiver jitter tolerance	1250	0.749	–	UI

Table 62: XAUI Protocol Characteristics

Description	Line Rate (Mb/s)	Min	Max	Units
XAUI Transmitter Jitter Generation				
Total transmitter jitter (T_TJ)	3125	–	0.35	UI
XAUI Receiver High Frequency Jitter Tolerance				
Total receiver jitter tolerance	3125	0.65	–	UI

Table 63: PCI Express Protocol Characteristics⁽¹⁾

Standard	Description	Line Rate (Mb/s)	Min	Max	Units	
PCI Express Transmitter Jitter Generation						
PCI Express Gen 1	Total transmitter jitter	2500	–	0.25	UI	
PCI Express Gen 2	Total transmitter jitter	5000	–	0.25	UI	
PCI Express Gen 3 ⁽²⁾	Total transmitter jitter uncorrelated	8000	–	31.25	ps	
	Deterministic transmitter jitter uncorrelated		–	12	ps	
PCI Express Receiver High Frequency Jitter Tolerance						
PCI Express Gen 1	Total receiver jitter tolerance	2500	0.65	–	UI	
PCI Express Gen 2 ⁽³⁾	Receiver inherent timing error	5000	0.40	–	UI	
	Receiver inherent deterministic timing error		0.30	–	UI	
PCI Express Gen 3 ⁽²⁾	Receiver sinusoidal jitter tolerance	0.03 MHz–1.0 MHz	8000	1.00	–	UI
		1.0 MHz–10 MHz		Note 4	–	UI
		10 MHz–100 MHz		0.10	–	UI

Notes:

1. Tested per card electromechanical (CEM) methodology.
2. PCI-SIG 3.0 certification and compliance test boards are currently not available.
3. Using common REFCLK.
4. Between 1 MHz and 10 MHz the minimum sinusoidal jitter roll-off with a slope of 20dB/decade.

Table 64: CEI-6G and CEI-11G Protocol Characteristics

Description	Line Rate (Mb/s)	Interface	Min	Max	Units
CEI-6G Transmitter Jitter Generation					
Total transmitter jitter ⁽¹⁾	4976–6375	CEI-6G-SR	–	0.3	UI
		CEI-6G-LR	–	0.3	UI
CEI-6G Receiver High Frequency Jitter Tolerance					
Total receiver jitter tolerance ⁽¹⁾	4976–6375	CEI-6G-SR	0.6	–	UI
		CEI-6G-LR	0.95	–	UI
CEI-11G Transmitter Jitter Generation					
Total transmitter jitter ⁽²⁾	9950–11100	CEI-11G-SR	–	0.3	UI
		CEI-11G-LR/MR	–	0.3	UI
CEI-11G Receiver High Frequency Jitter Tolerance					
Total receiver jitter tolerance ⁽²⁾	9950–11100	CEI-11G-SR	0.65	–	UI
		CEI-11G-MR	0.65	–	UI
		CEI-11G-LR	0.825	–	UI

Notes:

1. Tested at most commonly used line rate of 6250 Mb/s using 390.625 MHz reference clock.
2. Tested at line rate of 9950 Mb/s using 155.46875 MHz reference clock and 11100 Mb/s using 173.4375 MHz reference clock.

Table 65: SFP+ Protocol Characteristics

Description	Line Rate (Mb/s)	Min	Max	Units
SFP+ Transmitter Jitter Generation				
Total transmitter jitter	9830.40 ⁽¹⁾	–	0.28	UI
	9953.00			
	10312.50			
	10518.75			
	11100.00			
SFP+ Receiver Frequency Jitter Tolerance				
Total receiver jitter tolerance	9830.40 ⁽¹⁾	0.7	–	UI
	9953.00			
	10312.50			
	10518.75			
	11100.00			

Notes:

1. Line rated used for CPRI over SFP+ applications.

Table 66: CPRI Protocol Characteristics

Description	Line Rate (Mb/s)	Min	Max	Units
CPRI Transmitter Jitter Generation				
Total transmitter jitter	614.4	–	0.35	UI
	1228.8	–	0.35	UI
	2457.6	–	0.35	UI
	3072.0	–	0.35	UI
	4915.2	–	0.3	UI
	6144.0	–	0.3	UI
	9830.4	–	Note 1	UI
CPRI Receiver Frequency Jitter Tolerance				
Total receiver jitter tolerance	614.4	0.65	–	UI
	1228.8	0.65	–	UI
	2457.6	0.65	–	UI
	3072.0	0.65	–	UI
	4915.2	0.95	–	UI
	6144.0	0.95	–	UI
	9830.4	Note 1	–	UI

Notes:

1. Tested per SFP+ specification, see Table 65.

Integrated Interface Block for PCI Express Designs Switching Characteristics

More information and documentation on solutions for PCI Express designs can be found at:

www.xilinx.com/technology/protocols/pciexpress.htm

Table 67: Maximum Performance for PCI Express Designs

Symbol	Description	Speed Grade				Units
		1.0V			0.9V	
		-3	-2/-2L	-1/-1M	-2L	
F _{PIPECLK}	Pipe clock maximum frequency	250.00	250.00	250.00	250.00	MHz
F _{USERCLK}	User clock maximum frequency	500.00 ⁽¹⁾	500.00 ⁽¹⁾	250.00	250.00	MHz
F _{USERCLK2}	User clock 2 maximum frequency	250.00	250.00	250.00	250.00	MHz
F _{DRPCLK}	DRP clock maximum frequency	250.00	250.00	250.00	250.00	MHz

Notes:

1. PCI Express x8 Gen 3 operation is only supported in -2 and -3 speed grades.

XADC Specifications

Table 68: XADC Specifications

Parameter	Symbol	Comments/Conditions	Min	Typ	Max	Units
$V_{CCADC} = 1.8V \pm 5\%$, $V_{REFP} = 1.25V$, $V_{REFN} = 0V$, $ADCCLK = 26\text{ MHz}$, $T_j = -40^\circ\text{C}$ to 100°C , Typical values at $T_j = +40^\circ\text{C}$						
ADC Accuracy⁽¹⁾						
Resolution			12	–	–	Bits
Integral Nonlinearity ⁽²⁾	INL		–	–	± 3	LSBs
Differential Nonlinearity	DNL	No missing codes, guaranteed monotonic	–	–	± 1	LSBs
Offset Error		Offset calibration enabled	–	–	± 6	LSBs
Gain Error		Gain calibration disabled	–	–	± 0.5	%
Offset Matching		Offset calibration enabled	–	–	4	LSBs
Gain Matching		Gain calibration disabled	–	–	0.3	%
Sample Rate			0.1	–	1	MS/s
Signal to Noise Ratio ⁽²⁾	SNR	$F_{SAMPLE} = 500\text{KS/s}$, $F_{IN} = 20\text{KHz}$	60	–	–	dB
RMS Code Noise		External 1.25V reference	–	–	2	LSBs
		On-chip reference	–	3	–	LSBs
Total Harmonic Distortion ⁽²⁾	THD	$F_{SAMPLE} = 500\text{KS/s}$, $F_{IN} = 20\text{KHz}$	–	70	–	dB
ADC Accuracy at Extended Temperatures						
Resolution		$T_j = -55^\circ\text{C}$ to 125°C	10	–	–	Bits
Integral Nonlinearity ⁽²⁾	INL	$T_j = -55^\circ\text{C}$ to 125°C	–	–	± 1	LSB (at 10 bits)
Differential Nonlinearity	DNL	No missing codes, guaranteed monotonic, $T_j = -55^\circ\text{C}$ to 125°C	–	–	± 1	
Analog Inputs⁽³⁾						
ADC Input Ranges		Unipolar operation	0	–	1	V
		Bipolar operation	–0.5	–	+0.5	V
		Unipolar common mode range (FS input)	0	–	+0.5	V
		Bipolar common mode range (FS input)	+0.5	–	+0.6	V
Maximum External Channel Input Ranges		Adjacent channels set within these ranges should not corrupt measurements on adjacent channels	–0.1	–	V_{CCADC}	V
Auxiliary Channel Full Resolution Bandwidth	FRBW		250	–	–	KHz
On-Chip Sensors						
Temperature Sensor Error		$T_j = -40^\circ\text{C}$ to 100°C .	–	–	± 4	$^\circ\text{C}$
		$T_j = -55^\circ\text{C}$ to $+125^\circ\text{C}$	–	–	± 6	$^\circ\text{C}$
Supply Sensor Error		Measurement range of V_{CCAUX} $1.8V \pm 5\%$ $T_j = -40^\circ\text{C}$ to $+100^\circ\text{C}$	–	–	± 1	%
		Measurement range of V_{CCAUX} $1.8V \pm 5\%$ $T_j = -55^\circ\text{C}$ to $+125^\circ\text{C}$	–	–	± 2	%
Conversion Rate⁽⁴⁾						
Conversion Time - Continuous	t_{CONV}	Number of ADCCLK cycles	26	–	32	Cycles
Conversion Time - Event	t_{CONV}	Number of CLK cycles	–	–	21	Cycles
DRP Clock Frequency	DCLK	DRP clock frequency	8	–	250	MHz
ADC Clock Frequency	ADCCLK	Derived from DCLK	1	–	26	MHz

Table 68: XADC Specifications (Cont'd)

Parameter	Symbol	Comments/Conditions	Min	Typ	Max	Units
DCLK Duty Cycle			40	–	60	%
XADC Reference⁽⁵⁾						
External Reference	V _{REFP}	Externally supplied reference voltage	1.20	1.25	1.30	V
On-Chip Reference		Ground V _{REFP} pin to AGND, T _j = –40°C to 100°C	1.2375	1.25	1.2625	V

Notes:

- Offset and gain errors are removed by enabling the XADC automatic gain calibration feature. The values are specified for when this feature is enabled.
- Only specified for bitstream option XADCEnhancedLinearity = ON.
- For a detailed description, see the ADC chapter in the *7 Series FPGAs and Zynq-7000 All Programmable SoC XADC Dual 12-Bit 1 MSPS Analog-to-Digital Converter User Guide (UG480)*.
- For a detailed description, see the Timing chapter in the *7 Series FPGAs and Zynq-7000 All Programmable SoC XADC Dual 12-Bit 1 MSPS Analog-to-Digital Converter User Guide (UG480)*.
- Any variation in the reference voltage from the nominal V_{REFP} = 1.25V and V_{REFN} = 0V will result in a deviation from the ideal transfer function. This also impacts the accuracy of the internal sensor measurements (i.e., temperature and power supply). However, for external ratiometric type applications allowing reference to vary by ±4% is permitted. On-chip reference variation is ±1%.

Configuration Switching Characteristics

Table 69: Configuration Switching Characteristics

Symbol	Description	Speed Grade				Units
		1.0V			0.9V	
		-3	-2/-2L	-1/-1M	-2L	
Power-up Timing Characteristics						
T _{PL} ⁽¹⁾	Program latency	5	5	5	5	ms, Max
T _{POR} ⁽¹⁾	Power-on reset (50 ms ramp rate time)	10/50	10/50	10/50	10/50	ms, Min/Max
	Power-on reset (1 ms ramp rate time)	10/35	10/35	10/35	10/35	ms, Min/Max
T _{PROGRAM}	Program pulse width	250	250	250	250	ns, Min
CCLK Output (Master Mode)						
T _{ICCK}	Master CCLK output delay	150	150	150	150	ns, Min
T _{MCCKL}	Master CCLK clock Low time duty cycle	40/60	40/60	40/60	40/60	%, Min/Max
T _{MCCKH}	Master CCLK clock High time duty cycle	40/60	40/60	40/60	40/60	%, Min/Max
F _{MCCK}	Master CCLK frequency	100.00	100.00	100.00	70.00	MHz, Max
	Master CCLK frequency for AES encrypted x16	50.00	50.00	50.00	35.00	MHz, Max
F _{MCCK_START}	Master CCLK frequency at start of configuration	3.00	3.00	3.00	3.00	MHz, Typ
F _{MCCKTOL}	Frequency tolerance, master mode with respect to nominal CCLK	±50	±50	±50	±50	%, Max
CCLK Input (Slave Modes)						
T _{SCCKL}	Slave CCLK clock minimum Low time	2.50	2.50	2.50	2.50	ns, Min
T _{SCCKH}	Slave CCLK clock minimum High time	2.50	2.50	2.50	2.50	ns, Min
F _{SCCK}	Slave CCLK frequency	100.00	100.00	100.00	70.00	MHz, Max
EMCCLK Input (Master Mode)						
T _{EMCCKL}	External master CCLK Low time	2.50	2.50	2.50	2.50	ns, Min
T _{EMCCKH}	External master CCLK High time	2.50	2.50	2.50	2.50	ns, Min
F _{EMCCK}	External master CCLK frequency	100.00	100.00	100.00	70.00	MHz, Max

Table 69: Configuration Switching Characteristics (Cont'd)

Symbol	Description	Speed Grade				Units
		1.0V			0.9V	
		-3	-2/-2L	-1/-1M	-2L	
Internal Configuration Access Port						
F _{ICAPCK}	Internal configuration access port (ICAPE2)	100.00	100.00	100.00	70.00	MHz, Max
Master/Slave Serial Mode Programming Switching						
T _{DCCK} /T _{CCKD}	DIN Setup/Hold	4.00/0.00	4.00/0.00	4.00/0.00	5.00/0.00	ns, Min
T _{CCO}	DOOUT clock to out	8.00	8.00	8.00	9.00	ns, Max
SelectMAP Mode Programming Switching						
T _{SMDCCK} /T _{SMCCKD}	D[31:00] Setup/Hold	4.00/0.00	4.00/0.00	4.00/0.00	4.50/0.00	ns, Min
T _{SMCSCCK} /T _{SMCCKCS}	CSI_B Setup/Hold	4.00/0.00	4.00/0.00	4.00/0.00	5.00/0.00	ns, Min
T _{SMWCK} /T _{SMCKKW}	RDWR_B Setup/Hold	10.00/0.00	10.00/0.00	10.00/0.00	12.00/0.00	ns, Min
T _{SMCKCSO}	CSO_B clock to out (330Ω pull-up resistor required)	7.00	7.00	7.00	8.00	ns, Max
T _{SMCO}	D[31:00] clock to out in readback	8.00	8.00	8.00	10.00	ns, Max
F _{RBCK}	Readback frequency	100.00	100.00	100.00	70.00	MHz, Max
Boundary-Scan Port Timing Specifications						
T _{TAPTCK} /T _{TCKTAP}	TMS and TDI Setup/Hold	3.00/2.00	3.00/2.00	3.00/2.00	3.00/2.00	ns, Min
T _{TCKTDO}	TCK falling edge to TDO output	7.00	7.00	7.00	8.50	ns, Max
F _{TCK}	TCK frequency	66.00	66.00	66.00	50.00	MHz, Max
BPI Flash Master Mode Programming Switching						
T _{BPICCO} ⁽²⁾	A[28:00], RS[1:0], FCS_B, FOE_B, FWE_B, ADV_B clock to out	8.50	8.50	8.50	10.00	ns, Max
T _{BPIDCC} /T _{BPICCD}	D[15:00] Setup/Hold	4.00/0.00	4.00/0.00	4.00/0.00	4.50/0.00	ns, Min
SPI Flash Master Mode Programming Switching						
T _{SPIDCC} /T _{SPICCD}	D[03:00] Setup/Hold	3.00/0.00	3.00/0.00	3.00/0.00	3.00/0.00	ns, Min
T _{SPICCM}	MOSI clock to out	8.00	8.00	8.00	9.00	ns, Max
T _{SPICFC}	FCS_B clock to out	8.00	8.00	8.00	9.00	ns, Max
USRCCLK Output						
T _{USRCCLKO}	STARTUPE2 USRCCLKO input to CCLK output	0.50/6.00	0.50/6.70	0.50/7.50	0.50/7.50	ns, Min/Max
Device DNA Access Port						
F _{DNACK}	DNA access port (DNA_PORT)	100.00	100.00	100.00	70.00	MHz, Max

Notes:

- To support longer delays in configuration, use the design solutions described in the *7 Series FPGA Configuration User Guide* ([UG470](#)).
- Only during configuration, the last edge is determined by a weak pull-up/pull-down resistor in the I/O.

eFUSE Programming Conditions

Table 70 lists the programming conditions specifically for eFUSE. For more information, see the *7 Series FPGA Configuration User Guide (UG470)*.

Table 70: eFUSE Programming Conditions⁽¹⁾

Symbol	Description	Min	Typ	Max	Units
I _{FS}	V _{CCAUX} supply current	–	–	115	mA
t _j	Temperature range	15	–	125	°C

Notes:

1. The FPGA must not be configured during eFUSE programming.

Revision History

The following table shows the revision history for this document:

Date	Version	Description
03/01/2011	1.0	Initial Xilinx release.
04/01/2011	1.1	Added the XC7K355T, XC7K420T, and XC7K480T devices throughout data sheet. Added the extended temperature range discussion to page 1 . Updated V _{CCAUX_IO} in Table 2 . Edits to clarify Power-On/Off Power Supply Sequencing power sequencing discussion. Added I _{CCAUX_IO} and I _{CCBRAM} to Table 6 and Table 7 . Updated MMCM_F _{INDUTY} and added F _{INJITTER} , T _{OUTJITTER} , T _{EXTFDVAR} , and Note 3 to Table 39 . Removed the SBG324 package from Table 51 . Updated the Notice of Disclaimer .
10/04/2011	1.2	Replaced -1L with -2L throughout this data sheet. Updated Min/Max values and removed Note 5 from Table 2 . Clarified Power-On/Off Power Supply Sequencing power sequencing discussion including adding T _{VCCO2VCCAUX} to Table 8 . Updated V _{ICM} in Table 12 and Table 13 . Added Note 1 to table 12 . Updated Table 70 including adding Note 1 . Added <i>Absolute Maximum Ratings for GTX Transceivers</i> . Revised the reference clock maximum frequency (F _{GCLK}) in Table 56 . Added Table 58 . Added LVTTTL and removed SSTL135_II and SSTL15_II specifications from Table 20 . Removed HSTL_III from Table 21 . Removed the <i>I/O Standard Adjustment Measurement Methodology</i> section. Use IBIS for more accurate information and measurements. Updated T _{IDELAYPAT_JIT} in Table 27 . Added T _{AS} /T _{AH} to Table 29 . Added T _{RDCK_DL_WF_NC} /T _{RCKD_DL_WF_NC} and T _{RDCK_DL_RF} /T _{RCKD_DL_RF} to Table 32 . Completely updated Table 69 . Updated the AC Switching Characteristics in Table 20 , Table 21 , Table 22 , Table 23 , Table 24 , Table 25 , Table 27 through Table 39 , Table 41 though Table 38 , and Table 67 .
11/03/2011	1.3	Revised the V _{OCM} specification in Table 12 . Updated the AC Switching Characteristics based upon the ISE 13.3 v1.02 speed specification throughout document including Table 20 and Table 21 . Added MMCM_T _{FBDELAY} while adding MMCM_ to the symbol names of a few specifications in Table 39 and PLL to the symbol names in Table 40 . In Table 41 through Table 48 , updated the pin-to-pin descriptions with the SSTL15 standard. Updated units in Table 50 .
02/13/2012	1.4	Updated summary description on page 1 . In Table 2 , revised V _{CCO} for the 3.3V HR I/O banks and updated T _j . Added typical values to Table 3 . Updated the notes in Table 6 . Added MGTAVCC, MGTAVTT, and MGTVCCAUX power supply ramp times to Table 8 . Rearranged Table 9 , added Mobile_DDR, HSTL_I_18, HSTL_II_18, HSUL_12, SSTL135_R, SSTL15_R, and SSTL12 and removed DIFF_SSTL135, DIFF_SSTL18_I, DIFF_SSTL18_II, DIFF_HSTL_I, and DIFF_HSTL_II. Added Table 10 and Table 11 . Revised the specifications in Table 12 and Table 13 . Updated the eFUSE Programming Conditions section and removed the endurance table. Added the IO_FIFO Switching Characteristics table. Revised I _{CCADC} and updated Note 1 in Table 68 . Revised DDR LVDS transmitter data width in Table 17 . Updated the AC Switching Characteristics based upon the ISE 13.4 v1.03 speed specification throughout document. Removed notes from Table 29 as they are no longer applicable. Updated specifications in Table 69 . Updated Note 1 in Table 38 . In the GTX Transceiver DC Input and Output Levels section: Revised V _{IN} , and added I _{DCIN} and I _{DCOUT} to Table 52 . Added Note 4 to Table 54 . In Table 56 , revised F _{GCLK} , removed T _{PHASE} , and added T _{DLOCK} . Revised specifications and added Note 2 to Table 58 . Added Table 59 and Table 60 along with GTX Transceiver Protocol Jitter Characteristics in Table 61 through Table 66 .

Date	Version	Description
05/23/2012	1.5	<p>Reorganized entire data sheet including adding Table 45 and Table 49.</p> <p>Updated T_{SOL} in Table 1. Updated I_{BATT} and added R_{IN_TERM} to Table 3. Added values to Table 6 and Table 7. Updated Power-On/Off Power Supply Sequencing, page 6 with regards to GTX transceivers.</p> <p>Updated many parameters in Table 9 including SSTL135 and SSTL135_R. Removed V_{OX} column and added DIFF_HSUL_12 to Table 11. Updated V_{OL} in Table 12. Updated Table 17 and removed notes 2 and 3. Updated Table 18.</p> <p>Updated the AC Switching Characteristics based upon the ISE 14.1 v1.04 for the -3, -2, -2L (1.0V), -1, and -2L (0.9V) speed specifications throughout the document.</p> <p>In Table 32, updated Reset Delays section including Note 10 and Note 11. Added data for T_{LOCK} and T_{DLOCK} in Table 56. Updated many of the XADC specifications in Table 68 and added Note 2. Updated and moved <i>Dynamic Reconfiguration Port (DRP) for MMCM Before and After DCLK</i> section from Table 69 to Table 39 and Table 40.</p>
07/25/2012	1.6	<p>Updated the descriptions, changed V_{IN} and Note 2 and added Note 4 in Table 1. In Table 2, changed descriptions and notes, removed Note 7, changed GTX transceiver parameters and values and added Note 12. Updated parameters in Table 3. Added Table 4 and Table 5.</p> <p>Changed the typical values for many of the devices in Table 7. Updated LVCMOS12 and the SSTLs in Table 9. Updated many of the specifications in Table 10 and Table 11.</p> <p>Updated speed specification to v1.06 (-3, -2, -2L(1.0V), -1) and v1.05 (-2L(0.9V)) with appropriate changes to Table 15 and Table 16 including production release of the XC7K325T and the XC7K410T in the -2, -2L(1.0V), and -1 speed designations.</p> <p>Added notes and specifications to Table 18 and Table 19.</p> <p>Updated the IOB Pad Input/Output/3-State discussion and changed Table 22 by adding $T_{IOBUFDISABLE}$.</p> <p>Removed many of the combinatorial delay specifications and T_{CINCK}/T_{CKCIN} from Table 29.</p> <p>Rearranged Table 52 including moving some parameters to Table 1. Added Table 57. Updated Table 58. In Table 60, updated SJ Jitter Tolerance with Stressed Eye section, page 53 and Note 8. Added Note 1, Note 2, and Note 3 to Table 63. Added Note 1 and Note 2 to Table 64, and line rate ranges. Updated Table 65 including adding Note 1. Updated Table 66 including adding Note 1. In Table 68 updated Note 1 and added Note 4. In Table 69, updated T_{POR} and F_{EMCCK}.</p>
09/04/2012	1.7	<p>Updated Table 15 and Table 16 for production release of the XC7K160T in the -2, -2L(1.0V), and -1 speed designations.</p>
09/26/2012	1.8	<p>In Table 2, revised V_{CCINT} and V_{CCBRAM} and added Note 3. Updated Table 15 and Table 16 for production release of the XC7K480T in the -2, -2L(1.0V), and -1 speed designations and the XC7K325T and XC7K410T in the -3 speed designation.</p>
10/10/2012	1.9	<p>Updated the $I_{CCINTMIN}$ value for the XC7K355T in Table 7. Updated Table 15 and Table 16 for production release of the XC7K420T in the -2, -2L(1.0V), and -1 speed designations.</p>
10/25/2012	2.0	<p>Updated the AC Switching Characteristics based upon ISE 14.3 v1.07 for the -3, -2, -2L (1.0V), -1 speed specifications, and ISE 14.3 v1.06 for the -2L (0.9V) speed specifications throughout the document.</p> <p>Updated Table 15 and Table 16 for production release of the XC7K355T in the -2, -2L(1.0V), and -1 speed designations. Also updated Table 15 and Table 16 for production release of the XC7K325T and XC7K410T in the -2L (0.9V).</p> <p>Added values for Table 17 -2L (0.9V). Added package skew values to Table 51. In Table 54, increased -1 speed grade (FF package) F_{GTXMAX} value from 6.6 Gb/s to 8.0 Gb/s.</p>
10/31/2012	2.1	<p>Updated Table 15 and Table 16 for production release of the XC7K70T in the -2, -2L(1.0V), and -1 speed designations.</p>
11/26/2012	2.2	<p>Updated Table 15 and Table 16 for production release of -3 speed designation for XC7K70T, XC7K160T, XC7K355T, XC7K420T, and XC7K480T. Removed Note 4 from Table 68.</p>
12/05/2012	2.3	<p>Updated Table 15 and Table 16 for production release of the -2L (0.9V) speed designation for XC7K160T, XC7K420T, and XC7K480T. Updated Note 1 in Table 51.</p>
12/12/2012	2.4	<p>Updated Table 15 and Table 16 for production release of the -2L (0.9V) speed designation for XC7K70T and XC7K355T. Added Internal Configuration Access Port section to Table 69.</p>

Date	Version	Description
10/04/2013	2.5	In Table 1 , revised V_{IN} (I/O input voltage) to match values in Table 4 and Table 5 , and combined Note 4 with old Note 5 and then added new Note 5 . Also in Table 1 , updated I_{DCIN} and I_{DCOUT} sections. Revised V_{IN} description and added Note 3 and Note 8 in Table 2 . Updated first 3 rows in Table 4 and Table 5 . Replaced XPower with Xilinx Power Estimator (XPE) in sentence before Table 7 . Updated V_{IL} minimum for PCI33_3 in Table 9 . Added Note 1 to Table 12 . Added Note 1 to Table 13 . Added Vivado Design Suite to AC Switching Characteristics . Updated titles of Table 18 and Table 19 , and removed the following note: <i>RLDRAM III (BL = 4, BL = 8) and LPDDR2 specifications have not been validated with memory IP</i> . Updated T_{IOOP} and T_{IOTP} values in Table 20 . Replaced “TRACE report” with “timing report” in notes for Table 26 , Table 27 , Table 28 , Table 30 , and Table 32 . Removed this note: <i>A Zero “0” Hold Time listing indicates no hold time or a negative hold time</i> from Table 30 , Table 31 , and Table 46 . Updated Note 1 in Table 36 . Updated Table 58 to more accurately show transceiver user clocks for supported line rates. Updated Note 8 and description of F_{GTXRX} in Table 60 . Updated Note 2 , Note 3 , and Note 4 in Table 68 . Added $T_{USRCLK0}$ to Table 69 .
11/27/2013	2.6	Added Kintex-7Q defense-grade devices throughout. Added -1M speed grade throughout. Added reference to <i>7 Series FPGAs Overview</i> and <i>Defense-Grade 7 Series FPGAs Overview</i> in Introduction . In Table 2 , added junction temperature operating range for military (M) devices. In Table 3 , removed commercial (C), industrial (I), and extended (E) from descriptions of R_{IN_TERM} . Updated temperature ranges in Table 4 and Table 5 . Removed Note 1 and Note 2 from Table 7 . Added $T_J = 125^{\circ}\text{C}$ to Conditions column for $T_{VCCO2VCCAUX}$ in Table 8 . Added Table 14 . Updated description of $MMCM_F_{PFDMAX}$ in Table 39 . Updated description of PLL_F_{PFDMAX} in Table 40 . Added RF package type to Table 54 . Added F_{DNACK} to Table 69 .
02/07/2014	2.7	Updated the AC Switching Characteristics based upon ISE 14.7 and Vivado 2013.4. Updated Note 5 and added Note 6 to Table 2 . Added Note 2 to Table 4 . Added Note 2 and updated Note 3 in Table 5 . Added HSUL_12_F, DIFF_HSUL_12_F, MOBILE_DDR_S, MOBILE_DDR_F, DIFF_MOBILE_DDR_S, and DIFF_MOBILE_DDR_F standards to and updated values in Table 20 . Added HSUL_12_F, DIFF_HSUL_12_F, DIFF_HSUL_12_DCI_S, and DIFF_HSUL_12_DCI_F standards to and updated values in Table 21 . In Table 33 , corrected $F_{MAX_CAS_RF_DELAYED_WRITE}$ from 478.27 to 478.24 MHz to match software behavior. Removed introductory paragraph of Device Pin-to-Pin Output Parameter Guidelines and Device Pin-to-Pin Input Parameter Guidelines . Updated display format of “ADC Accuracy at Extended Temperatures” section in Table 68 .
03/04/2014	2.8	Updated Note 2 in Table 4 and Note 2 in Table 5 . For XQ7K325T and XQ7K410T in Table 15 , changed -2 and -1 speed grades to -2I and -1I, respectively, and moved all XQ7K325T speed grades from Preliminary to Production. In Table 16 , added production software for XQ7K325T -2/2L, -1, -1M, and (0.9V) -2L speed grades. Removed “and FB” from title of Table 19 . Removed notes from Table 20 and Table 21 . Added Note 1 to Table 67 .

Notice of Disclaimer

The information disclosed to you hereunder (the “Materials”) is provided solely for the selection and use of Xilinx products. To the maximum extent permitted by applicable law: (1) Materials are made available “AS IS” and with all faults, Xilinx hereby DISCLAIMS ALL WARRANTIES AND CONDITIONS, EXPRESS, IMPLIED, OR STATUTORY, INCLUDING BUT NOT LIMITED TO WARRANTIES OF MERCHANTABILITY, NON-INFRINGEMENT, OR FITNESS FOR ANY PARTICULAR PURPOSE; and (2) Xilinx shall not be liable (whether in contract or tort, including negligence, or under any other theory of liability) for any loss or damage of any kind or nature related to, arising under, or in connection with, the Materials (including your use of the Materials), including for any direct, indirect, special, incidental, or consequential loss or damage (including loss of data, profits, goodwill, or any type of loss or damage suffered as a result of any action brought by a third party) even if such damage or loss was reasonably foreseeable or Xilinx had been advised of the possibility of the same. Xilinx assumes no obligation to correct any errors contained in the Materials or to notify you of updates to the Materials or to product specifications. You may not reproduce, modify, distribute, or publicly display the Materials without prior written consent. Certain products are subject to the terms and conditions of Xilinx’s limited warranty, please refer to Xilinx’s Terms of Sale which can be viewed at www.xilinx.com/legal.htm#tos; IP cores may be subject to warranty and support terms contained in a license issued to you by Xilinx. Xilinx products are not designed or intended to be fail-safe or for use in any application requiring fail-safe performance; you assume sole risk and liability for use of Xilinx products in such critical applications, please refer to Xilinx’s Terms of Sale which can be viewed at www.xilinx.com/legal.htm#tos.

AUTOMOTIVE APPLICATIONS DISCLAIMER

XILINX PRODUCTS ARE NOT DESIGNED OR INTENDED TO BE FAIL-SAFE, OR FOR USE IN ANY APPLICATION REQUIRING FAIL-SAFE PERFORMANCE, SUCH AS APPLICATIONS RELATED TO: (I) THE DEPLOYMENT OF AIRBAGS, (II) CONTROL OF A VEHICLE, UNLESS THERE IS A FAIL-SAFE OR REDUNDANCY FEATURE (WHICH DOES NOT INCLUDE USE OF SOFTWARE IN THE XILINX DEVICE TO IMPLEMENT THE REDUNDANCY) AND A WARNING SIGNAL UPON FAILURE TO THE OPERATOR, OR (III) USES THAT COULD LEAD TO DEATH OR PERSONAL INJURY. CUSTOMER ASSUMES THE SOLE RISK AND LIABILITY OF ANY USE OF XILINX PRODUCTS IN SUCH APPLICATIONS.