



Yale® KeyMark®

Protected Keyway Cylinders

applications



description

Yale® KeyMark® is a protected keyway line of cylinders. Cylinders include mortise, rim, key-in-lever, key-in-knob, auxiliary, and interchangeable core. Interchangeable core is available in both large and small format. All formats can be tied into one master key system!

contents

- Applications.....2
- Keys.....3
- System Specifications4
- Cylinder Types..... 5-12
- Collars..... 13
- Accessories..... 14
- Construction Core Program..... 15

protected

Yale KeyMark keyways are considered as 'protected' by Yale and special procedures are in place to ensure their integrity.

See page 4 for more information.

certifications

- ANSI/BHMA A156.5 Grade 1
- E09211 (Mortise)
- E09221 (Rim)
- E09231 (Bored Lock Cylinders)



product specifications

All cylinders to have an angled keyway that accepts a keyblank that is constructed with the same angle. All cylinders shall be available in any of the mortise, rim, cylindrical or interchangeable core types. All cylinder components (excluding tumbler pins and fasteners) shall be constructed of the same material; this material shall be extruded brass. All cylinders shall be capable of utilizing the same key sections and the same key cutting depth and space specification without any loss of keying capacity. Cylinders shall contain standard pins, a portion of which, both bottom and top, shall be spooled for greater resistance against picking.

applications

Especially recommended for installations requiring protected key control protection. Ideally suited for Educational and Healthcare facilities, Industrial, and Commercial buildings.

features and benefits

Features	Benefits
<ul style="list-style-type: none"> • Unique <i>Yale KeyMark Security Leg®</i> keyway angle 	<ul style="list-style-type: none"> • Will not interchange with <i>KeyMark</i> by Medeco
<ul style="list-style-type: none"> • Protected key control through the <i>Security Leg</i> keyway 	<ul style="list-style-type: none"> • Provides increased resistance against picking and impressioning
<ul style="list-style-type: none"> • Convenient, simple to service 	<ul style="list-style-type: none"> • No extra internal moving parts such as side bars
<ul style="list-style-type: none"> • Available in 6- and 7-pin cylinders 	<ul style="list-style-type: none"> • Can easily retrofit into existing systems
<ul style="list-style-type: none"> • Able to master key SFIC, LFIC and fixed core cylinders to the same keying system 	<ul style="list-style-type: none"> • One key can operate small format IC, as well as large format IC, and fixed core cylinders
<ul style="list-style-type: none"> • Uses common style pins 	<ul style="list-style-type: none"> • No angle tip or interlocking pins which result in loss of keying capacity
<ul style="list-style-type: none"> • Different keying specifications from conventional <i>Yale</i> systems 	<ul style="list-style-type: none"> • Increased master keying capacity over conventional <i>Yale</i> keying systems
<ul style="list-style-type: none"> • New keyways 	<ul style="list-style-type: none"> • Will not interchange with current <i>Yale</i> or <i>KeyMark</i> by Medeco key systems, resulting in increased protection for the owner

keys

security leg®

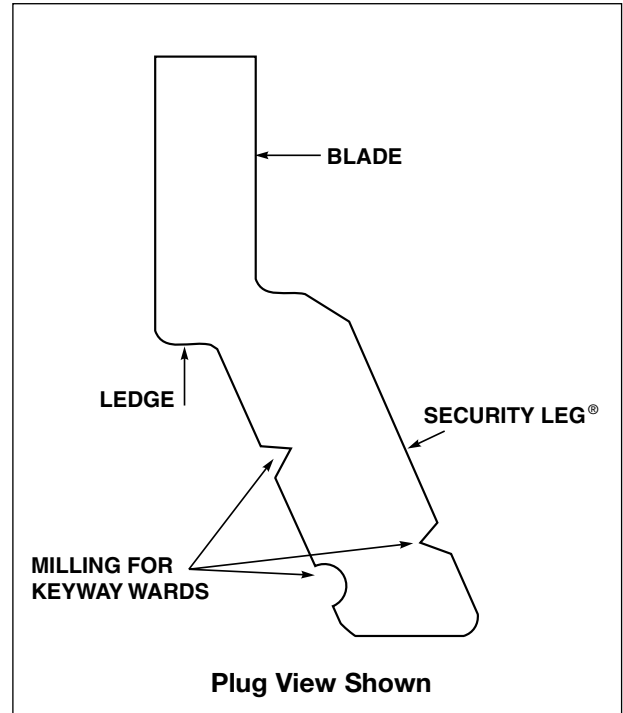
The Yale® KeyMark® keyway has three distinct components: an upper portion or blade, a middle ledge, and a unique, lower angled portion or leg which exits the plug at an angle.

The Security Leg® keyway offers these advantages:

1. Keyway differentiation by angle
2. Increased picking resistance
3. Prevents other manufacturers' or other angle users' keys from entering the cylinder
4. A unique and strong protected key with true key control
5. A key blank of added thickness for extra strength and durability
6. Prevents duplication of keys on standard key machines

key warranty

Yale KeyMark keys are covered by a lifetime warranty against breakage under normal usage conditions. Refer to the current Yale pricebook for additional warranty information.



keys and key stamping

KeyBlank Descriptions				
Bow Style	Material	Number	Used For	Keyway
K	N (Nickel Silver)	11	6-pin Master/Change Keys 6-pin SFIC Control Keys	Keyway designations not printed for security reasons.
		117	7-pin Master/Change Keys 7-pin SFIC Control Keys	
		117C	6-pin LFIC Control Keys	
		118C	7-pin LFIC Control Keys	Refer to system bitting list for correct keyway.
		91C	6-pin Schlage® Control Keys	

How to Order Example

Qty.	Description	Keyway
100	KN11	XX

stamping

All keys will come standard with keybow and stampings as shown. Control keys for LFIC will be furnished with a larger keybow.



Front Side



Back Side

backside stamping options

- Keyset (VKC1) standard – unless otherwise indicated
- System registry number will be stamped on upper-level keys unless otherwise indicated
- Concealed key control (CKC2 only) available on cylinders
- Visual key control (VKC2 and VKC3) not available on cylinders

system specifications

keyways

Keyway Administration and Assignment

For security purposes, the keyway hierarchies and profiles are not printed. All keyways will be noted on the master key system bitting list.

Yale® Key Systems Administration will assign all Yale® KeyMark® keyways. Keyways will be assigned according to facility type, geographic location, and keying system specifications. All keys will direct ship to the end user. All master key systems will be registered with Key Systems Administration and all bittings will be factory created.

System Administration & Key Control

Key control will be maintained through compliance with the *Yale Security Policy*: for a copy contact Key Systems Administration or visit our website at www.yalelocks.com. System information and/or systems related product will be forwarded directly to the owner, unless otherwise indicated by the owner's appointed administrator.

Primary Systems Administrators

All *Yale KeyMark* master key systems must have a signed Notice of Acceptance for the Facility on file with Key Systems Administration. The Notice of Acceptance designates the primary systems administrator of the facility. Unless otherwise indicated by the primary systems administrator by way of a separate specific letter of authorization, all shipments for *Yale KeyMark* product will go to the shipping address as per the Notice of Acceptance.

For every master key system that is established, a separate Owner's Binder will be sent directly to the primary systems administrator. This Owner's Binder will include all the information needed by the Facility to maintain the *Yale KeyMark* master key system,

including system-specific Registration Certificates which are required for all future orders to be placed for the system.

All keyblanks to be maintained in the possession of the facility must be accounted for. Any defective, incorrectly cut or damaged key blank must be retained in the facility's possession to be returned to *Yale* on a quarterly basis.

keying specifications

6- or 7-pin with two nickel silver change keys per cylinder. *Yale KeyMark* cylinders may be furnished uncombined, master keyed, or grandmaster keyed to a specific facility. Keyed random or 0-bitted cylinders are not available. For uncombined, specify UC. UC are furnished less pins, springs, pin covers and keys.

system specifications

Yale KeyMark uses the A2 pinning specification for all types of cylinders. To ensure the security and integrity of each master key system, the following guidelines should be followed:

- Master key systems are independent and cannot be keyed into existing and/or conventional Yale master key systems.
- Cylinders are to be keyed to factory generated bittings only.
- Master key systems are not to exceed five levels of keying.
- Proper keying nomenclature must be used for all systems.
- Cross keying is not available.
- Construction master keying is not available. See page 15 for construction core program.
- Selective master keys are not recommended. If required, they must be established at the inception of the keying system.

finishes

Yale KeyMark cylinders are available in the following ANSI/BHMA finishes offered by *Yale*.

ANSI/BHMA Code	Finish Description
605	Bright Brass, Clear Coated
606	Satin Brass, Clear Coated
612	Satin Bronze, Clear Coated
613	Dark Oxidized Satin Bronze, Oil Rubbed
618	Bright Nickel (matching 630)
619	Satin Nickel (matching 629)
625	Bright Chrome Plated
626	Satin Chrome Plated



Yale® KeyMark® | protected keyway

mortise cylinders

fixed core



Mortise Fixed Core (FC)

For use with mortise and auxiliary locksets.

Cylinder	Length	Pins	Cam
K100	1-1/8" 1-1/4" 1-1/2" 1-3/4" 2"	6 or 7	KC1 (For cam options, see page 14.)
All cylinders are drilled for 7-pins. Length must be specified.			

how to order examples

Mortise Cylinder Ordered Separately							
Quantity	Cylinder	Length	Pins	Keyway	Cam	Keyset	Finish
50	K100	1-1/4"	6	XX	KC1	AA1	626
Collar not furnished with cylinder ordered separately.							

Mortise Lockset with a Yale® KeyMark® Cylinder									
Quantity	Trim	Lock	Cylinder	Pins	Keyway	Keyset	Hand	Thickness	Finish
50	AUR	8805FL	K100	6	XX	AA1	RHR	1-3/4"	626
Collar - 1765 furnished standard when ordered with lockset.									

For Collar applications, see page 13.



**Mortise Lock AUR 8805FL
with K100 Cylinder**

Exceptions: Yale® KeyMark® cylinders are not available for the following: 8820, 8820FL, 8827, 8827FL, 8832, 8832FL.

rim cylinders

fixed core

For use with exit devices and auxiliary locking devices.

Cylinder	Length	Pins	Tailpiece
K300	1-1/8"	6 or 7	KT1 Horizontal Break-off *
*For vertical application change orientation of tailpiece. All cylinders are drilled for 7-pins.			



Rim Fixed Core (FC)

how to order examples

Rim Cylinder Ordered Separately						
Quantity	Cylinder	Pins	Keyway	Tailpiece	Keyset	Finish
50	K300	6	XX	KT1	AA1	626
Collar not furnished with cylinder ordered separately.						

Exit Device with a Yale® KeyMark® Cylinder								
Quantity	Device	Trim	Cylinder	Pins	Keyway	Keyset	Hand	Finish
50	7150	626F	K300	6	XX	AA1	RHR	626
For Collar applications, see page 13.								



Heavy-Duty Exit Device Trim 626F with K300 Cylinder and KP4 Collar

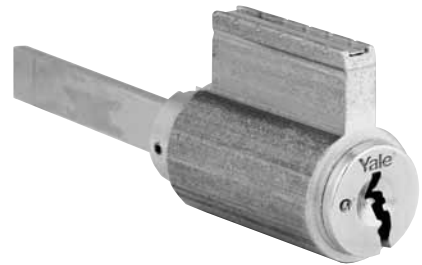


key-in-knob and key-in-lever cylinders

fixed core component and interchangeable core

For use with lever and knob series locksets.

Cylinder	Trim Type	Pins		Tailpiece*
		6	7	
K400	Knob, Yale® 5300, 5400 Series	X	NA**	NA
K402	Lever, Yale 4700LN, 5300LN	X	NA	KT2
K402	Lever, Yale 5400LN, 6400LN Series	X		KT2
			X	KT7
K404	Knob/Lever, Yale 4300, 4300LN, 4800LN Series	X	NA	KT3
K490	Lever, Schlage® A, D & ND Series	X	NA	KT5



Key-in-knob (KIK),
Key-in-lever (KIL)
Fixed Core (FC)

*Length varies by function and application. For tailpiece options, see page 14.
**7-Pin available only for CA design with 5300 and for CA and BR designs with 5400.

how to order examples

Component Cylinder Ordered Separately					
Quantity	Cylinder	Pins	Keyway	Keyset	Finish
50	K400	6	XX	AA1	626

Cylindrical Lock with a Yale® KeyMark® Fixed Core Cylinder or IC							
Quantity	Trim	Lock	Cylinder	Pins	Keyway	Keyset	Finish
50	AU	5407LN	K402 (Fixed Core) or *K600 (Small Format IC) - see page 9, or *K800 (Large Format IC) - see page 8.	6	XX	AA1	626

how to order with construction temporary cores

(See page 15 for Construction Core Program)



Heavy-duty Cylindrical Lock
AU5407LN with K800 Core

Cylindrical Lock with a Temporary LFIC						
Quantity	Trim	Lock	Cylinder	Key Code	Hand	Finish
50	AU	5407LN	1210	CT6LL	RHR	626

For permanent core ordered separately, see "Core Only" on page 8.

Cylindrical Lock with a Temporary, Lockable SFIC						
Quantity	Trim	Lock	Cylinder	Key Code	Hand	Finish
50	B-AU	5407LN	K926	CT6SL	RHR	626

For permanent core ordered separately, see "Core Only" on page 9.

interchangeable core cylinders

large format mortise

For use with mortise and auxiliary locksets.



Complete Mortise Cylinder (LFIC)

Complete Cylinder	Core	Housing	Length	Pins		Cam
				6	7	
K820	Included	Included	1-1/2"	X		KC1 (For cam options, see page 14.)
			1-11/16"		X	
			1-3/4"	X	X	
			2"	X	X	
K800	K860	K860	1-1/2"	X		
			1-11/16"		X	
			1-3/4"	X	X	
			2"	X	X	
Schlage® LFIC	K890			X	NA	

how to order examples



Large Format Interchangeable Core (LFIC)

Mortise Cylinder Ordered Separately								
	Quantity	Cylinder	Length	Pins	Keyway	Cam	Keyset	Finish
Complete Cylinder	50	K820	1-1/2"	6	XX	KC1	AA1	626
Housing Only	50	K860	1-1/2"	6	--	KC1	--	626
Core Only	50	K800	--	6	XX	--	AA1	626

Collar not furnished with cylinder ordered separately.

Mortise Lockset with a Yale® KeyMark® LFIC Cylinder								
Quantity	Trim	Lock	Cylinder	Pins	Keyset	Hand	Thickness	Finish
50	AUR	8805FL	K820	6	AA1	RHR	1-3/4"	626

Collar - 1765 furnished standard when ordered with lockset. For Collar applications, see page 13.



Mortise Lock AUR 8805FL with K820 Cylinder

how to order with construction temporary cores (See page 15 for Construction Core Program)

Mortise Lockset with Temporary LFIC							
Quantity	Trim	Lock	Cylinder	Key Code	Hand	Thickness	Finish
50	AUR	8805FL	K825	CT6LL	RHR	1-3/4"	626

For permanent core ordered separately, see "Core Only" above.

Mortise Cylinder Separately with Temporary LFIC					
Quantity	Cylinder	Length	Cam	Key Code	Finish
50	K825	1-1/2"	KC1	CT6LL	626

For permanent core ordered separately, see "Core Only" above.

interchangeable core cylinders

small format mortise

For use with mortise and auxiliary locksets.



Complete Mortise Cylinder (SFIC)



Small Format Interchangeable Core (SFIC)



Mortise AUR 8805FL with K620 Cylinder

Complete Cylinder	Core	Housing	Length	Pins		Cam
				6	7	
K620	Included	Included	1-1/4"	X		KC1 (For cam options, see page 14.)
			1-3/8"	X	X	
			1-3/4"	X	X	
K630 Tapered*	Included	Included	1-1/4"	X		
			1-3/8"	X	X	
	K600			X	X	
Non-Tapered Mortise Housing		K660	1-1/4"	X		
			1-3/8"	X	X	
			1-3/4"	X	X	
Tapered Mortise Housing		K670	1-1/4"	X		
			1-3/8"	X	X	

* Tapered housings (not illustrated) are designed for narrow stile/backset applications, (storefront doors). Recessed collars are not necessary.

how to order examples

Mortise Cylinder Ordered Separately								
	Quantity	Cylinder	Length	Pins	Keyway	Cam	Keyset	Finish
Complete Cylinder	50	K620	1-1/4"	6	XX	KC1	AA1	626
Housing Only	50	K660	1-1/4"	6	--	KC1	--	626
Core Only	50	K600	--	6	XX	--	AA1	626

Collar not furnished with cylinder ordered separately.

Mortise Lockset with a Yale® KeyMark® SFIC Cylinder								
Quantity	Trim	Lock	Cylinder	Pins	Keyset	Hand	Thickness	Finish
50	AUR	8805FL	K620	6	AA1	RHR	1-3/4"	626

Collar - 1765 furnished standard when ordered with lockset. For Collar applications, see page 13.

how to order with construction temporary cores

(See page 15 for Construction Core Program)

Mortise Lockset with Temporary, Lockable SFIC							
Quantity	Trim	Lock	Cylinder	Key Code	Hand	Thickness	Finish
50	AUR	8805FL	K625	CT6SL	RHR	1-3/4"	626

For permanent core ordered separately, see "Core Only" above.

Mortise Lockset with Temporary, Disposable SFIC							
Quantity	Trim	Lock	Cylinder	Key Code	Hand	Thickness	Finish
50	AUR	8805FL	K625	CT6SD	RHR	1-3/4"	626

For permanent core ordered separately, see "Core Only" above.

interchangeable core cylinders

large format rim

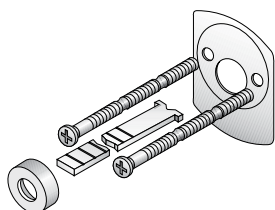
For use with exit devices and auxiliary locking devices.



Complete Rim Cylinder (LFIC)

Complete Cylinder	Core	Housing	Length	Pins		Tailpiece (TP)
				6	7	
K840	Included	Included	1-7/16"	X	--	KT1 Horizontal Break-off (For vertical application, change orientation of tailpiece)
			1-5/8"	--	X	
		K880	1-7/16"	X	--	
			1-5/8"	--	X	
	K800	--	--	X	X	
Schlage® LFIC	K890	--	--	X	NA	

how to order examples



Tailpiece and Mounting Hardware

Rim Cylinder Ordered Separately								
	Quantity	Cylinder	Length	Pins	Keyway	TP	Keyset	Finish
Complete Cylinder	50	K840	1-7/16"	6	XX	KT1	AA1	626
Housing Only	50	K880	1-7/16"	6	--	KT1	--	626
Core Only	50	K800	--	6	XX	--	AA1	626

Collar not furnished with cylinder ordered separately.



Heavy-Duty Exit Device Trim 626F with K840 Cylinder and KP4 Collar

Exit Device with a Yale® KeyMark® LFIC Cylinder								
Quantity	Device	Trim	Cylinder	Pins	Keyway	Keyset	Hand	Finish
50	7150	626F	K840	6	XX	AA1	RHR	626

For Collar applications, see page 13.

how to order with construction temporary cores (See page 15 for Construction Core Program)

Exit Device with Temporary LFIC						
Quantity	Device	Trim	Cylinder	Key Code	Hand	Finish
50	7150	626F	K845	CT6LL	RHR	626

For permanent core ordered separately, see "Core Only" above.

Rim Cylinder Separately with Temporary LFIC				
Quantity	Cylinder	Tailpiece	Key Code	Finish
50	K845	KT1	CT6LL	626

For permanent core ordered separately, see "Core Only" above.



interchangeable core cylinders

small format rim

For use with exit devices and auxiliary locking devices.



Complete Rim Cylinder (SFIC)

Complete Cylinder	Core	Housing	Length	Pins		Tailpiece (TP)
				6	7	
K640	Included	Included	1-1/4"	X	--	KT1 Horizontal Break-off (For vertical application, change orientation of tailpiece.)
			1-3/8"	X	X	
--	--	K680	1-1/4"	X	--	
			1-3/8"	X	X	
--	K600	--	--	X	X	

how to order examples

Rim Cylinder Ordered Separately								
	Quantity	Cylinder	Length	Pins	Keyway	TP	Keyset	Finish
Complete Cylinder	50	K640	1-1/4"	6	XX	KT1	AA1	626
Housing Only	50	K680	1-1/4"	6	--	KT1	--	626
Core Only	50	K600	--	6	XX	--	AA1	626

Collar not furnished with cylinder ordered separately.



Heavy-Duty Exit Device Trim 626F with K640 Cylinder and KP4 Collar

Exit Device with a Yale® KeyMark® SFIC Cylinder								
Quantity	Device	Trim	Cylinder	Pins	Keyway	Keyset	Hand	Finish
50	7150	626F	K640	6	XX	AA1	RHR	626

For Collar applications, see page 13.

how to order with construction temporary cores (See page 15 for Construction Core Program)

Exit Device with Temporary, Lockable SFIC						
Quantity	Device	Trim	Cylinder	Key Code	Hand	Finish
50	7150	626F	K645	CT6SL	RHR	626

For permanent core ordered separately, see "Core Only" above.

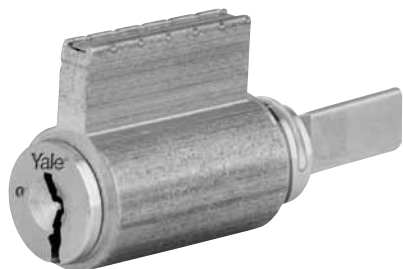
Rim Cylinder Separately with Temporary, Disposable SFIC				
Quantity	Cylinder	Tailpiece	Key Code	Finish
50	K645	KT1	CT6SD	626

For permanent core ordered separately, see "Core Only" above.

auxiliary locks/padlocks

bored auxiliary deadlocks

For use with bored auxiliary deadlocks.



Cylinder	Used With	Pins		Tailpiece
		6	7	
K202	Yale 4800LN Series	X	NA	KT8
K290	Schlage® "B"	X	NA	KT6

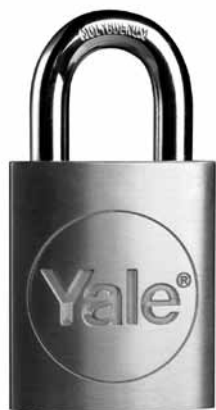
Note: For D series LFIC, refer to page 8 for K800 information.

how to order examples

Cylinder Ordered Separately						
Quantity	Cylinder	Pins	Keyway	Tailpiece	Keyset	Finish
50	K202	6	XX	KT4	AA1	626

padlocks

For use with Yale PD500 Series Large or Small Format Interchangeable Core padlocks.



how to order examples

Padlock with a Large Format Yale® KeyMark® Core					
Quantity	Lock	Cylinder	Pins	Keyway	Keyset
50	PD524	K800	6	XX	AA1

For How To Order core only, refer to page 8.

Padlock with a Small Format Yale® KeyMark® Core					
Quantity	Lock	Cylinder	Pins	Keyway	Keyset
50	PD512	K600	6	XX	AA1

For How To Order core only, refer to page 9.



collars



**1765
Solid Recessed**



**KP3
Wave Washer
(Furnished standard with 1765 collar.)**

1765 collar application guide for mortise lock standard "sectional" and all Reflections® trims

Cylinder		Door Thickness			
Type	Length	1-3/4"	2"	2-1/4"	2-1/2"
K100	1-1/8"	.312	.187	.062	*
K100	1-1/4"	.375	.281	.125	.062
K620/660					
K620	1-3/8"	.563	.469	.312	.187
K100	1-1/2"	.656	.563	.406	.281
K820/860					
K820/860	1-11/16"	.844	.750	.594	.500

* Indicates cylinder length not sufficient for door/escutcheon thickness; select a longer cylinder.

1765 collar application guide for mortise lock "escutcheon" trim

Cylinder		Camden				SL or Easton				Lenoir				Copenhagen			
Type	Length	Door Thickness				Door Thickness				Door Thickness				Door Thickness			
		1-3/4"	2"	2-1/4"	2-1/2"	1-3/4"	2"	2-1/4"	2-1/2"	1-3/4"	2"	2-1/4" ^	2-1/2"	1-3/4"	2"	2-1/4"	2-1/2"
K100	1-1/8"	NC	*	*	*	.125	KP4	*	*	.187	NC	NC	*	.187	.094	*	*
K100	1-1/4"	NC	NC	*	*	.156	.094	*	*	.281	.125	.062	NC	.344	.219	.094	*
K620/660																	
K620	1-3/8"	.125	NC ^	NC ^	*	.375	.250	.156	KP4	.469	.312	.187	.062	.469	.344	.250	KP4
K100	1-1/2"	.250	.125	*	NC	.500	.375	.250	.125	.563	.406	.312	.156	.594	.469	.375	.219
K820/860																	
K820/860	1-11/16"	.469	.344	.219	.062	.719	.563	.469	.312	.750	.594	.469	.375	.844	.656	.531	.406

*Indicates cylinder length not sufficient for door/escutcheon thickness, select a longer cylinder. ^Single cylinder only NC=No Collar Required

collar application guide for exit device trim

Cylinder		Trim							
Type	Length	121NL	200	500/510	620/680	630	350/650	660/670	
Rim K300	1-1/8"	1765.250	1765.406	599.544	KP4	1765.250			
K640/680	1-1/4"								
K640/680	1-3/8"								
K840/880	1-7/16"								
K840/880	1-5/8"								
Mortise/FC K100	1-1/2"							NC	KP4
Mortise/LFIC K820/K860	1-1/2"							NC	KP4
K820/K860	1-11/16"							KP4	1765.375
Mortise/SFIC K620/K660	1-1/4"							NA	NA
K620/K660	1-3/8"							NA	NC
K620/K660	1-3/4"							KP4	1765.375



**KP4
Flush Mount**

Collar sizes are based on 1-3/4" door thickness, for sizes other than those shown contact Yale technical support.

accessories

cams*



KC1



KC2



KC4

Number	Reference
KC1†	2160
KC2	2130
KC3	1161/Schlage® straight
KC4	1160
KC5	1161L (AR)
KC6	1161G (KeySwitch)
KC7	Schlage® cloverleaf
KC8	Corbin Russwin cloverleaf (A01)
KC9	Sargent® Straight
KC10	Yale® Affinity®

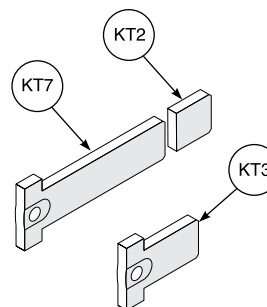
†Furnished standard unless otherwise specified.

Cylinder Accessories*

Number	Reference
KP1	Cam Washer
KP2	Screws

***Note: Yale® KeyMark® cams and cylinder accessories are not interchangeable with other Yale® cylinders.**

tailpieces

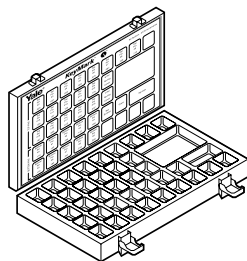


Number	Used With	Remarks
KT1	K300/K840	Rim/LFIC Rim
KT2	K402	6-Pin KIL
KT3	K404	KIL
KT4	K200	Auxiliary
KT5	K490	Schlage® KIL Kit
KT6	K290	Schlage® Auxiliary
KT7	K402	7-Pin KIL
KT8	K202	6-Pin Interconnected Lock

service tools

Pin Kit

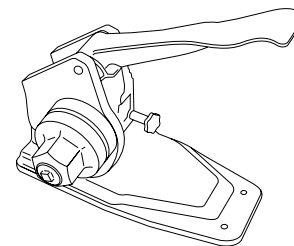
Each pin kit has all the pins necessary to combine Yale® KeyMark® FC, SFIC and LFIC cylinders.



How To Order

K918

Key Cutting Equipment & Accessories	Number
Key Punch	K900
Key Punch Vise (K900 Machine)	K901

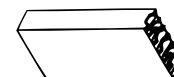


K900

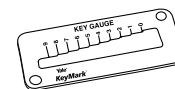
Key Punch

This code-cutting punch features automatic key advance and interchangeable vise assembly. The key punch can rest on your workbench, or it can be mounted securely to the bench by means of the two mounting holes located in the base.

Tools & Fixtures	Number
Flattening (Staking) Tool for K800 LFIC	K902
K400 Series Staking Tool (Non-IC)	K912
Holding Fixture for Mortise, Rim, Component, and K800	K913
IC Pinning Block (6- or 7-Pin)	K914
Key Gauge/Decoder	K915
IC Pin Ejector	K916
IC Hand Capping Punch	K917
Jaw, tip gauge & code card for HPC 1200	K919



K912



K915

construction core program

construction master keying

For security reasons, Yale® KeyMark® cylinders are not available construction master keyed. Temporary construction cores are available for both SFIC and LFIC. Temporary cores for SFIC are available with either disposable or locking cores. Temporary cores for LFIC are available with only lockable cores. Please note that temporary cores are not available in competitor formats.

When requesting locksets or cylinders with temporary cores where *Yale KeyMark* cores will be used for the permanent master key system, the proper ordering procedures must be followed to ensure the issuance of the correct cylinder collars and housings. For all Temporary Construction core orders, both the cylinder and key code designations must be specified. See this page and pages 7-11 for How to Order Examples.

Key Codes	Description
CT6LL	6-pin with large format lockable temporary core
CT6SL	6-pin with small format lockable temporary core
CT6SD	6-pin with small format disposable temporary core
CT7LL	7-pin with large format lockable temporary core
CT7SL	7-pin with small format lockable temporary core
CT7SD	7-pin with small format disposable temporary core

Large Format (LFIC)

Yale's 1210/1220 cores are furnished when the following cylinder designations are used:

Cylinder	Description	Used With
1210	CT6LL	Cylindrical
1220	CT7LL	Cylindrical
K825	Complete Cylinder	Mortise
K845	Complete Cylinder	Rim

All locksets and cylinders ordered with large format interchangeable cores will be provided with keyed alike standard *Yale* 1210 or 1220 temporary cores. Temporary operating and control keys are required and quantities should be specified. At the completion of the construction phase, these temporary cores can be returned. Refer to the current *Yale* price book for details. See pages 7, 8 & 10 for additional examples.

How to Order Example:

Mortise Lockset to be Furnished with Temporary LFIC
For the above example, the customer would receive complete mortise locksets with *Yale KeyMark* K860-1-1/2" housings, 1765.594 collars and 6-pin Yale 1210 keyed alike core. The *Yale KeyMark* permanent cores, K800, would be ordered separately.

Qty.	Trim	Lock	Cylinder	Key Code	Hand	Thickness	Finish
50	AUR	8805FL	K825	CT6LL	RHR	1-3/4"	626

Small Format (SFIC)

Small format temporary cores can be provided with two options: Disposable or Lockable.
Either disposable or K926 (6-pin lockable) cores are furnished when

the following cylinder designations are used:

Cylinder	Description	Used With
K925	6/7-pin Disposable Thumb Turn Only	Cylindrical
K926	6/7-pin Lockable Core Only	Cylindrical
K625	Complete Cylinder	Mortise
K635	Complete Cylinder	Mortise-Tapered
K645	Complete Cylinder	Rim

Option 1: Disposable SFIC (K925)

All locksets and cylinders will be provided with disposable thumb-turn type cores. No keys are required. These cores are disposable and cannot be returned. See pages 9 & 11 for additional examples.

How to Order Example:

Mortise Lockset to be Furnished with Temporary, Disposable SFIC
For the above example, the customer would receive complete mortise locksets with *Yale KeyMark* K660 – 1-1/4" housings, 1765.375 collars and disposable thumb-turn cores, K925. The *Yale KeyMark* permanent cores, K600, would be ordered separately.

Qty.	Trim	Lock	Cylinder	Key Code	Hand	Thickness	Finish
50	AUR	8805FL	K625	CT6SD	RHR	1-3/4"	626

Option 2: Lockable SFIC (K926)

All locksets and cylinders will be provided with keyed alike standard SFIC cores that are unrelated to the permanent master key system. Temporary operating and control keys are required, quantities must be specified. At the completion of the construction phase, these temporary cores can be returned. See pages 9 & 11 for additional examples.

How to Order Example:

Exit Device to be Furnished with Temporary, Lockable SFIC
For the above example, the customer would receive complete exit devices and trim with *Yale KeyMark* K680 housings, KP4 collars and temporary locking SFIC cores, K926. The *Yale KeyMark* permanent cores, K600, would be ordered separately.

Qty.	Device	Trim	Cylinder	Key Code	Hand	Finish
50	7150	626F	K645	CT6SL	RHR	626

How To Order

Systems requiring SFIC temporary cores must be ordered either completely with disposable, or lockable cores. Locksets and /or cylinder on a particular purchase order may not be mixed with SFIC temporary core types.

Lockable SFIC cores, K926, and disposable SFIC cores, K925, may be purchased separately. Refer to the *Yale KeyMark* pricing tab for details.

online literature and templates

For the latest information on Yale Locks & Hardware products, visit our website at: www.yalelocks.com

Click on the “Product Information” button to find:

- Catalogs
- Parts manuals
- Templates
- Specifications
- Installation instructions

Yale® customers can click on the ebusiness symbol  on the website to register for an ebusiness account to:

- Check the status of orders
- Check availability of QuickShip items
- Track your order and confirm delivery
- Receive email notification of template changes
- And More...

Or contact us at:

U.S.A.

Yale Locks & Hardware

Address: 225 Episcopal Road, Berlin, CT 06037-4004
 Tel: 1-800-438-1951 • Fax: 1-800-338-0965 • www.yalelocks.com

Canada:

ASSA ABLOY Door Security Solutions Canada

Address: 160 Four Valley Drive, Vaughan, Ontario L4K 4T9
 Tel: 1-800-461-3007 • Fax: 1-800-461-8989 • www.assaabloy.ca

International:

ASSA ABLOY Americas International

Tel: 1-905-821-7775 • Fax: 1-905-821-1429 • www.assaabloyai.com

Yale Locks & Hardware is a division of Yale Security Inc., an ASSA ABLOY Group company.

Yale®, Affinity® and Reflections® are registered trademarks of Yale Security Inc., an ASSA ABLOY Group company. KeyMark® and Security Leg® are registered trademarks of Medeco Security Locks, Inc., an ASSA ABLOY Group company. Other products' brand names may be trademarks or registered trademarks of their respective owners and are mentioned for reference purposes only. These materials are protected under U.S. copyright laws. All contents current at time of publication. Yale Security Inc. reserves the right to change availability of any item in this catalog, its design, construction, and/or its materials. Copyright © 2002, 2013, Yale Security Inc., an ASSA ABLOY Group company. All rights reserved. Reproduction in whole or in part without the express written permission of the Yale Security Inc., an ASSA ABLOY Group company, is prohibited.

YALE, with its unique global reach and range of products, is the world's favorite lock.

ASSA ABLOY is the global leader in door opening solutions, dedicated to satisfying end-user needs for security, safety and convenience.

42050-6/13R