

**Yale®**

**Manual Hoists**



Specifications for

# Hoists and Trolleys

# Table of Contents

---

## Hand Chain Hoist

---

Yale Yalelift 360 .....	1-2
Yale VS /// .....	3-4
CM Series 622 .....	5
Yale Yalelift ITP/ITG .....	6-7
Yale Yalelift LHP/LHG .....	8-9
Coffing LHH .....	10-11

## Ratchet Lever Hoist

---

Yale Yalehandy .....	12
Yale UNOplus .....	13
Yale C 85 and D 85 .....	14-15
Yale D 95 .....	16
Yale AL .....	17

## Trolleys

---

CM CBTP/CBTG .....	18
Yale HTP and HTG .....	19-20

## Beam Clamps

---

Yale YC .....	21
Yale YRC .....	22

## Specialities

---

Budgit Series USA Hoist .....	23-26
CM Cyclone Hoist .....	27-32
Chester Zephyr Hoist .....	33-41
Chester PT Trolley .....	42-43



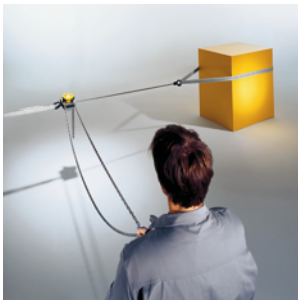
## Yalelift 360 Hand chain hoist

### Capacity 500 - 20000 kg

Areas of operation as well as operator conditions have been improved far beyond those of a classical hand chain hoist.

#### Standard Features

- The enclosed robust stamped steel housing protects all internal components even in the toughest conditions.
- The extremely low headroom allows maximum use of the lifting height.
- The revolutionary 360° rotating hand chain guide allows the operator to work from virtually any position, in confined spaces or above the load. The Yalelift can even be operated from the side of the load which also makes it possible to use the hoist for horizontal pulling or tensioning. Due to the additional flexibility, the operator is no longer forced to work in the danger zone near the load.
- The brake system is extremely quiet and guarantees operational safety and improved serviceability due to omission of the vulnerable ratchet pawls. All parts are made of high quality materials, additionally zinc-plated or yellow-chromated to increase corrosion prevention.
- Chain guide and gearbox are almost totally enclosed. Even under the toughest conditions the internal gearbox remains protected.
- The hardened load sheave with four precision machined pockets ensures accurate movement of the load chain.
- The surface protected zinc-plated alloy steel load chains fulfil all requirements of current national and international standards and regulations.
- Drop forged load and suspension hooks that yield under overload instead of breaking, are made of high tensile steel. The hooks are fitted with robust safety latches and rotate 360°.



#### Options

- Adjustable overload prevention device.
- Stainless steel load and hand chains.
- Chain container
- Corrosion resistant version
- Explosion proof version (ATEX)



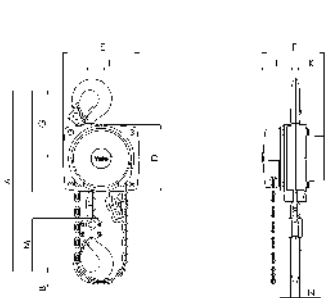
design award  
winner  
**2003**

**Specifications model Yalelift 360**

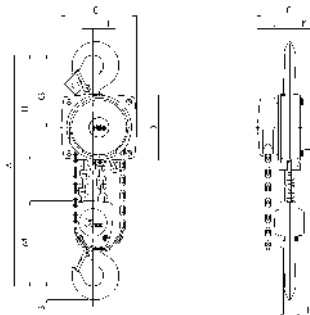
Model	Capacity kg	Number of chain falls	Chain dimensions d x p mm	Lift per 1 m handchain overhaul m	Chain pull at WLL daN	Weight at standard lift (3 m) kg
YL 500	500	1	5 x 15	30	21	9
YL 1000	1000	1	6 x 18	49	30	13
YL 2000	2000	1	8 x 24	71	32	20
YL 3000	3000	1	10 x 30	87	38	29
YL 5000	5000	2	10 x 30	174	34	38
YL 10000	10000	3	10 x 30	261	44	71
YL 20000	20000	6	10 x 30	522	2 x 44	196

**Dimensions model Yalelift 360**

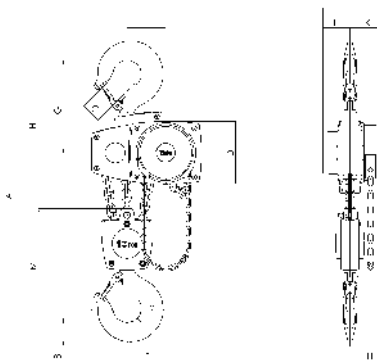
Model	YL 500	YL 1000	YL 2000	YL 3000	YL 5000	YL 10000	YL 20000
Amin., mm	300	335	395	520	654	825	1010
B, mm	17	22	30	38	45	68	85
C, mm	24	29	35	40	47	68	64
D, mm	133	156	182	220	220	220	303
E, mm	148	175	203	250	250	383	555
F, mm	139	157	183	204	204	204	250
G, mm	139	164	192	225	242	326	391
H, mm	206	242	283	335	352	436	501
I, mm	24	24	31	34	21	136	-
K, mm	61	70	83	95	95	95	396
L, mm	79	87	100	109	109	109	125
M, mm	110	125	156	178	285	401	471
N, mm	14	19	22	30	37	50	56



Yalelift 360, 500 - 3000 kg



Yalelift 360, 5000 kg



Yalelift 360, 10000 kg



## VS III Hand chain hoist

**Capacity 500 - 5000 kg**

The newly designed hand chain hoist VSIII is an innovative further development introduced by Yale. The improved hand chain guide prevents canting or jamming of the hand chain, leading to a smooth running of the chain. High quality bearings on side plates, gearbox and load chain sheave ensure smooth operation of load chain and drive pinion.

Optimized hand forces set standards for easy operation.

### Standard Features

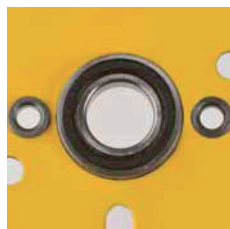
- Strong bolts between side plates and housing cover and the reinforced hand wheel cover ensure increased stability.
- Precision machined guide rollers ensure smooth running of the load chain.
- High quality bearings for gearbox, side plates and load chain sheave permit a long service life.
- Zinc-plated and yellow-chromated brake parts and guide rollers ensure increased corrosion protection.
- Zinc-plated load chain as standard for added corrosion protection.

### Options

- Overload prevention device
- Chain container



Load chain sheave with needle bearing



Side plate with ball bearing



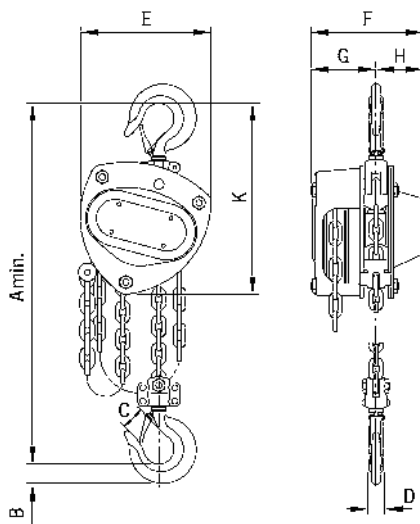
Housing cover with ball bearing

**Specifications model VS III**

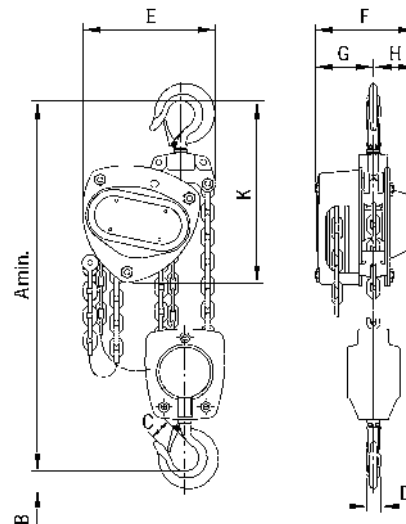
Model	Capacity kg	Number of chain falls	Chain dimensions d x p mm	Lift per 1 m handchain overhaul mm	Chain pull at WLL daN	Weight at standard lift (3 m) kg
VSIII 0.5/1	500	1	5x15	26	21	9.0
VSIII 1.0/1	1000	1	6x18	24	24	11.5
VSIII 2.0/1	2000	1	8x24	19	32	19.0
VSIII 2.0/2	2000	2	6x18	15	29	17.3
VSIII 3.0/1	3000	1	10x30	12	40	31.0
VSIII 3.0/2	3000	2	8x24	10	37	27.0
VSIII 5.0/2	5000	2	10x30	8	41	43.0

**Dimensions model VS III**

Model	VS III 0.5/1	VS III 1.0/1	VS III 2.0/1	VS III 2.0/2	VS III 3.0/1	VS III 3.0/2	VS III 5.0/2
A min. mm	350	380	460	490	570	580	700
B . mm	21	28	36	36	45	45	47
C . mm	23	27	35	35	40	40	45
D . mm	16	20	29	29	29	29	40
E . mm	145	158	205	170	240	220	250
F . mm	140	155	180	155	210	175	190
G . mm	80	87	94	87	110	94	95
H . mm	60	68	86	68	100	81	95
K . mm	240	270	320	285	370	340	410



Model VSIII, 250 - 3000 kg, single fall



Model VSIII, 2000 - 5000 kg, double fall



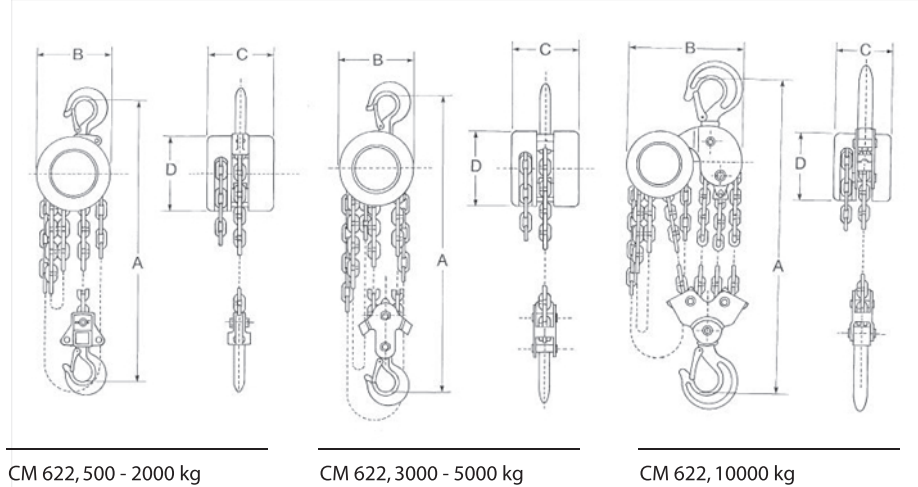
## Series 622 Hand chain hoist

Capacity 500 - 10000 kg

Series CM 622 hand chain hoist has simple, efficient, economical design.

### Standard Features

- Equipped with hardened load chain for flexibility and long wear.
- Compact design, low headroom and lightweight steel construction for easy installation, even in confined spaces.
- Weston-type load brake requires no lubrication.
- Hand wheel cover with guide slots minimizes jamming and slipping.
- Forged swivel hooks with latches reduce twisting of chain and unintentional unhooking of load when chain is slack.



### Specificationsa model CM 622

Model	Capacity kg	Standard lift m	Number of chain falls	Hand chain overhauled to lift load one meter m	Chain pull at WLL daN	Headroom mm	Weight kg
CM 622, 500	500	3	1	29	24	295	7
CM 622, 1000	1000	3	1	37	35	330	10
CM 622, 2000	2000	3	1	80	37	460	26
CM 622, 3000	3000	3	2	154	29	556	38
CM 622, 5000	5000	3	2	147	47	606	60
CM 622, 10000	10000	3	4	289	49	700	74

\* We do not recommend lifting height is over 12m.

### Dimensions model CM 622

Model	0.5 t	1 t	2 t	3 t	5 t	10 t
A, mm	295	330	460	565	616	700
B, mm	125	142	210	210	210	358
C, mm	109	128	168	168	168	168
D, mm	124.4	142	210	210	210	210
Hook opening(upper)	22	26.5	32	34	44	57
Hook opening(lower)	22	26.5	32	34	44	57



## Yalelift ITP/ITG Hand chain hoist with integrated push or geared type trolley

**Capacity 500 - 20000 kg**

The combination of the Yalelift 360 with a low headroom manual trolley provides even more flexibility in the application of the Yalelift 360.

### Standard Features

- All units of this series up to a capacity of 3000 kg are provided with single chain fall and the min. headroom (Dim. A) has been further reduced. Ideal for applications with low ceilings and limited headroom.
- The proven and almost stepless adjustment system allows quick and easy assembly of the trolley.
- Trolleys up to 5 t are offered for two beam ranges. Range A for a flange width up to 180 mm is standard and covers approx. 80 % of all requirements. Conversion to range B for beam width up to 300 mm can be easily accomplished.
- The trolley wheels are designed for a max. beam profile incline of 14 % (DIN 1025 - part 1), excellent rolling features are guaranteed by prelubricated, encapsulated ball bearings.
- Anti-drop and anti-tilt devices as standard.

### Options

- Adjustable overload prevention device.
- Stainless steel load and hand chains.
- Chain container
- Rubber buffers
- Corrosion resistant version
- Explosion proof version (ATEX)
- Beam locking device to secure the unloaded trolley in a fixed position on the beam (park position e.g. on ships). Available up to a capacity of 20000 kg.

### Specifications model Yalelift ITP/ITG

Model	Capacity kg	Number of chain falls	Size	Beam flange width b mm	Beam flange thickness t mm	Curve radius m	Weight at standard lift (3m) -P kg	Weight at standard lift (3m) -G kg	Weight at standard lift (3m) with locking device -P kg	Weight at standard lift (3m) with locking device -G kg
YLIT* 500	500	1	A	50 - 180	19	0.9	20	24	26	31
YLIT* 500	500	1	B	180 - 300	19	0.9	21	25	27	32
YLIT* 1000	1000	1	A	50 - 180	19	0.9	27	32	35	40
YLIT* 1000	1000	1	B	180 - 300	19	0.9	29	33	37	41
YLIT* 2000	2000	1	A	58 - 180	19	1.15	44	49	52	57
YLIT* 2000	2000	1	B	180 - 300	19	1.15	46	50	54	58
YLIT* 3000	3000	1	A	74 - 180	27	1.5	77	82	86	91
YLIT* 3000	3000	1	B	180 - 300	27	1.4	79	84	88	93
YLIT* 5000	5000	2	A	98 - 180	27	2.0	125	130	135	140
YLIT* 5000	5000	2	B	180 - 300	27	1.8	129	134	139	144
YLIT* 10000	10000	3	B	125 - 310	40	1.8	-	-	-	-
YLIT* 20000**	20000	6	B	180 - 310	40	5.0	-	-	-	-

\* Insert P=Push trolley, G=Geared trolley.

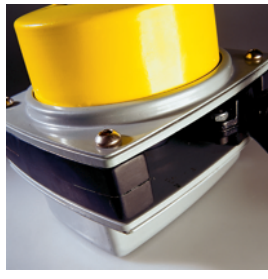
\*\*Dimensions on request.



Chain guide



High quality encapsulated ball bearings and sliding bushes for smooth and effortless operation.



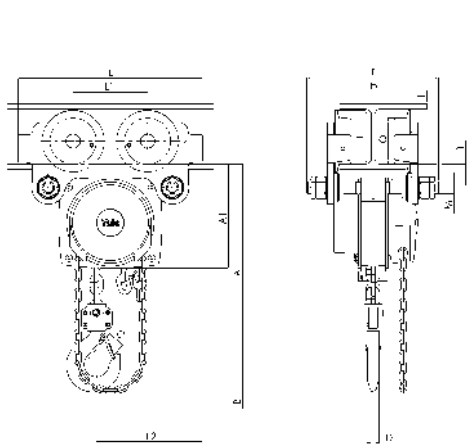
The robust stamped steel housing with four stay bolts is resistant to the toughest working conditions.



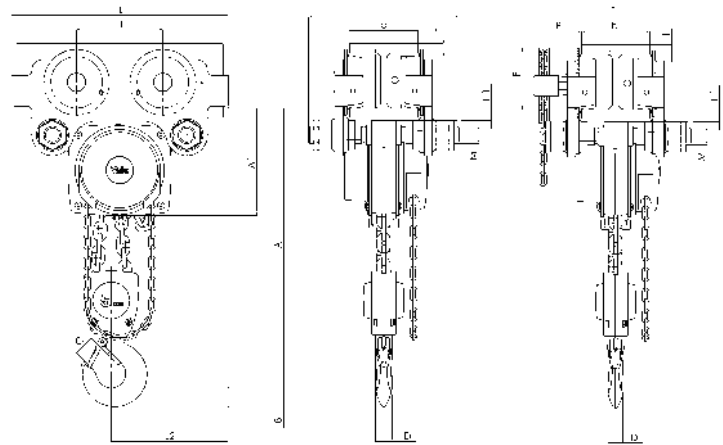
The precisely machined load sheave ensures accurate movement of the load chain.

## Dimensions model Yalelift ITP/ITG

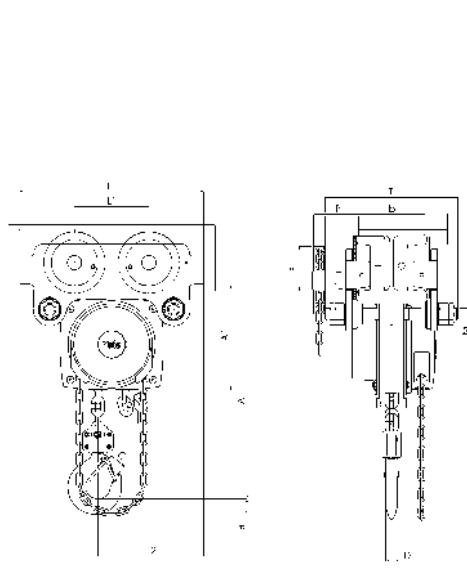
Model	YLITP/ITG 500	YLITP/ITG 1000	YLITP/ITG 2000	YLITP/ITG 3000	YLITP/ITG 5000	YLITP/ITG 10000
Amin., mm	245	272	323	382	550	784
A1, mm	158	178	205.5	252	260.5	380
A2, mm	-	-	-	-	-	-
B, mm	17	22	30	38	45	68
C, mm	24	29	35	40	47	68
D, mm	14	19	22	30	37	50
F (Geared), mm	92	92	91	107	149.5	113
H1, mm	24.5	24	23.5	32	30.5	55
I (Pushed), mm	71.5	71.5	95.5	131	142.5	169
I (Geared), mm	76.5	76.5	98	132.5	148.5	169
L, mm	270	310	360	445	525	430
L1, mm	130	130	150	180	209	200
L2, mm	159	175	207	256	283	261
L3, mm	-	-	-	-	-	-
L4, mm	-	-	-	-	-	-
M, mm	M 18	M 22	M 27	M 30	M 42	M 48
O, mm	60	60	80	112	125	150
P (Geared), mm	108	110	112	112	117	158
T (area A), mm	280	290	305	320	364	540
T (area B), mm	400	410	425	440	484	540



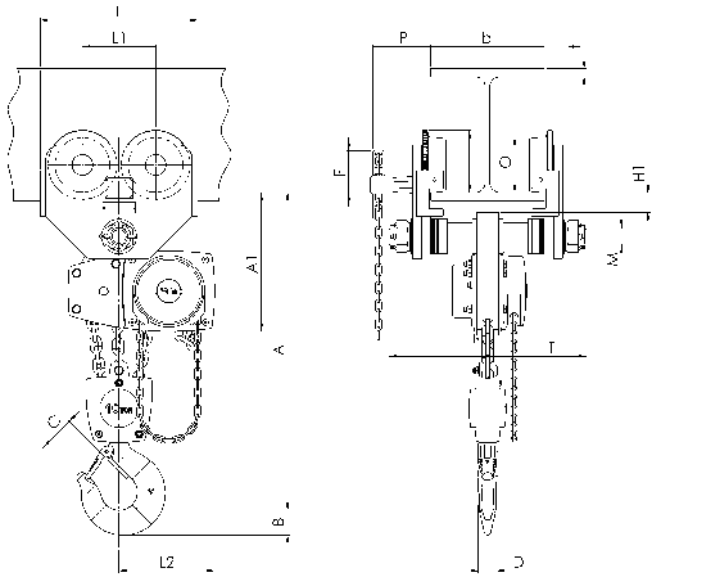
Yalelift ITP, 500 - 3000 kg



Yalelift ITP/ITG, 5000 kg



Yalelift ITG, 500 - 3000 kg



Yalelift ITG, 10000 kg





# Yalelift LHP/LHG

## Hand chain hoist with integrated push or geared type trolley (low headroom)



**Capacity 500 - 10000 kg**

The hand chain hoist model Yalelift LH with integrated low headroom manual trolley is the consequent further development of the Yalelift IT. Wherever an even smaller headroom is essential, the Yalelift LH is the ideal choice.

### Standard Features

- The specially developed chain reeving system and chain guide allow the bottom block to be pulled laterally to the hoist even further up and almost against the beam flange.
- The integrated design of the innovative Yalelift LH uses the same manual trolleys as incorporated in the Yalelift IT series.
- All models of the LH series up to 3000 kg capacity are provided with single chain fall.
- The proven and almost stepless adjustment system allows quick and easy assembly of the trolley.
- The trolleys up to 5 t are offered for two beam ranges. Range A for a flange width up to 180 mm is standard and covers approx. 80 % of all requirements. Conversion to range B for beam width up to 300 mm can be easily accomplished.
- The trolley wheels are designed for a max. beam profile incline of 14 % (DIN 1025 - part 1), excellent rolling features are guaranteed by prelubricated, encapsulated ball bearings.
- The low headroom version of the Yalelift IT is adjustable to fit a wide range of beam profiles (e.g. INP, IPE, IPB).
- Anti-drop and anti-tilt devices as standard.
- Excellent rolling features due to machined steel wheels mounted on pre-lubricated, encapsulated ball bearings.

### Options

- Adjustable overload prevention device.
- Stainless steel load and hand chains.
- Chain container
- Corrosion resistant version
- Explosion proof version (ATEX)
- Beam locking device to secure the unloaded trolley in a fixed position on the beam (park position e.g. on ships). Available up to a capacity of 10000 kg.

### Specifications model Yalelift LHP/LHG

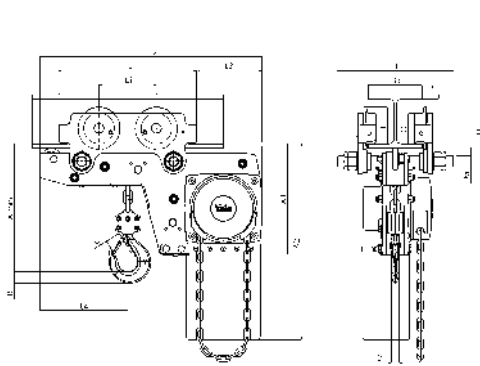
Model	Capacity kg	Standard lifting height m	Number of chain falls	Size mm	Beam flange width mm	Headroom mm	Curve radius min. mm	Weight kg	
								- push trolley	- geared trolley
YLLH* 500	500	3	1	A	60-180	188	0.9	27	31
YLLH* 500	500	3	1	B	180-300	188	0.9	27	32
YLLH* 1000	1000	3	1	A	70-180	211	0.9	35	40
YLLH* 1000	1000	3	1	B	180-300	211	0.9	36	41
YLLH* 2000	2000	3	1	A	82-180	264	1.15	61	65
YLLH* 2000	2000	3	1	B	180-300	264	1.15	62	67
YLLH* 3000	3000	3	1	A	100-180	316	1.5	107	112
YLLH* 3000	3000	3	1	B	180-300	316	1.4	109	114
YLLH* 5000	5000	3	2	A	110-180	425	2	152	157
YLLH* 5000	5000	3	2	B	180-300	425	1.8	156	161
YLLH* 10000	10000	3	3	A	125-180	565	1.8	on request	on request
YLLH* 10000	10000	3	3	B	180-310	565	1.8	on request	on request

\* Insert P=Push trolley, G=Geared trolley

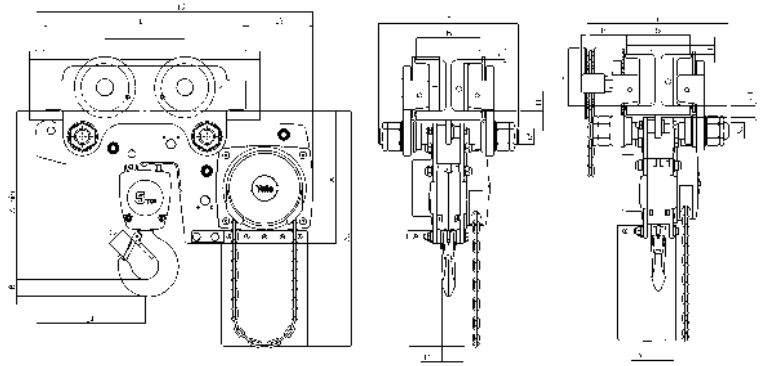


## Dimensions model Yalelift LHP/LHG

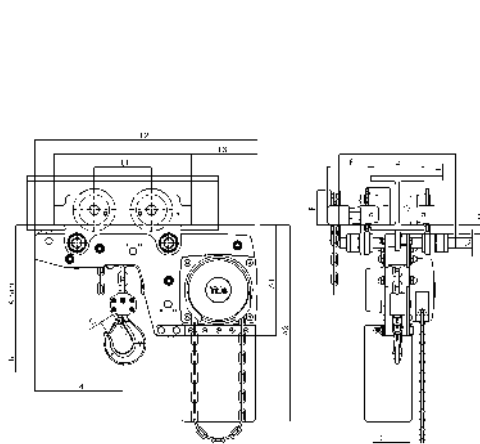
Model	YLLH 500	YLLH 1000	YLLH 2000	YLLH 3000	YLLH 5000	YLLH 10000
Amin., mm	188	211	264	316	425	565
A1, mm	223	250	289	346	345	365
A2, mm	381	427	511	614	612	665
B, mm	17	22	30	38	45	68
C, mm	24	29	35	40	47	68
D, mm	14	19	22	30	37	50
F (Geared), mm	92	92	91	107	150	150
H1, mm	24	24	24	32	31	45
I (Pushed), mm	72	72	96	131	143	170
I (Geared), mm	77	77	98	133	149	170
L, mm	270	310	360	445	525	485
L1, mm	130	130	150	180	209	225
L2, mm	444	488	582	690	720	805
L3, mm	124	135	172	203	175	215
L4, mm	184	201	230	265	283	348
M, mm	M 18	M 22	M 27	M 30	M 42	M 48
O, mm	60	60	80	112	125	150
P (Geared), mm	108	110	112	112	117	165
T (area A), mm	280	290	305	320	364	440
T (area B), mm	400	410	425	440	484	540



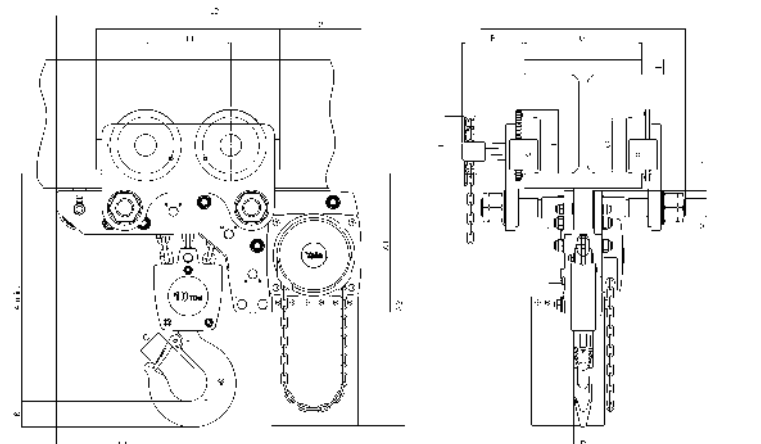
Yalelift LHP, 500 - 3000 kg



Yalelift LHP/LHG, 5000 kg



Yalelift LHG, 500 - 3000 kg



Yalelift LHG, 10000 kg



## LHH Hand chain hoist

**Capacity 500 – 50000 kg**

Stamped steel hand chain hoists are an excellent low cost option in the Coffing line. The compact, lightweight design is ideal for construction and contractor applications where portability and easy rigging are critical.

### Standard Features

- **CAPACITIES & LIFT** - Rated loads from 1/2 to 20 Tons in stock with standard lifts of 10, 15, and 20 feet. Standard hand chain drop is 2-feet less than lift. Other lifts, hand chain drops and 25 - 50 Ton models available — consult factory.
- **COMPACT and LIGHTWEIGHT** - Designed for portability and easy installation. Compact gear housing provides low headroom.
- **EASY TO OPERATE** - Lubricated bearings and bushings, bearing-mounted pinions, and heat-treated spur gearing ensure smooth and efficient operation with minimal effort.
- **SAFETY & LOAD CONTROL** - Mechanical load brake engages instantly for precise load holding and positioning. 360o swivel hooks with safety latches for positive load engagement.
- **DURABLE** - Through hardened load chain provides added strength and wear resistance for greater chain life. Stamped steel housing withstands rugged conditions.
- **EASY TO MAINTAIN** - Designed for easy inspection and maintenance. Hoist can be dismantled easily with simple hand tools.
- **METRIC RATED**

### Specifications model LHH

Model	Capacity kg	Standard lifting height** m	Number of chain falls	Chain overhauled to lift load one meter m	Chain pull at WLL daN	Headroom mm	Net weight (3m lift) kg
LHH-1/2	500	3/4.5/6	1	32	25	260	9
LHH-1	1000	3/4.5/6	1	56	24	300	11
LHH-1 1/2	1500	3/4.5/6	1	75	29	344	16
LHH-2	2000	3/4.5/6	1	75	34	381	21
LHH-3	3000	3/4.5/6	1	95	38	435	30
LHH-5	5000	3/4.5/6	3	203	36	575	34
LHH-8	8000	3/6	3	312.5	35	826	72
LHH-10	10000	3/6	3	312.5	43	826	72
LHH-12	12000	3/6	5	526	38	1286	149
LHH-15	15000	3/6	5	526	47	1286	149
LHH-20	20000	3/6	6	312.5 x 2 †	45	1330	243
LHH-25	25000*	3	8	416.7 x 2 †	44	1330	308
LHH-30	30000*	3	10	526.3 x 2 †	47	1651	429
LHH-40	40000*	3	14	714.3 x 2 †	46	1862	635
LHH-50	50000*	3	20	1000 x 2 †	47	1972	835

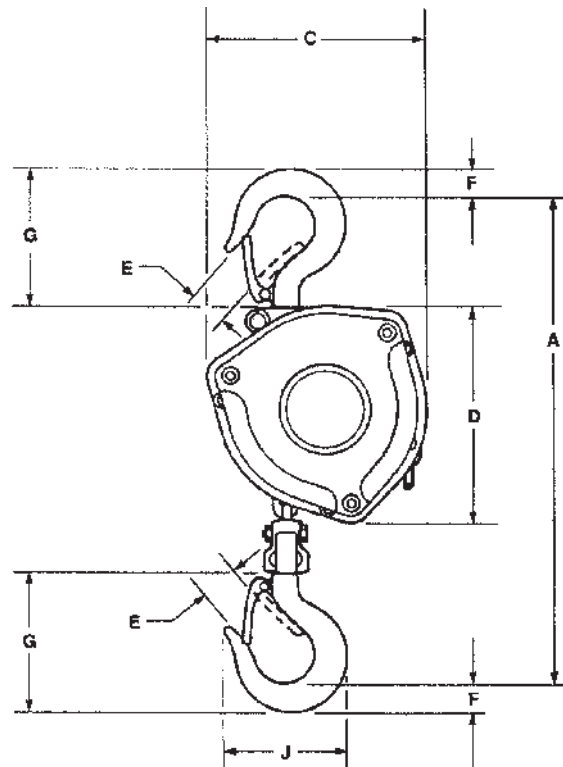
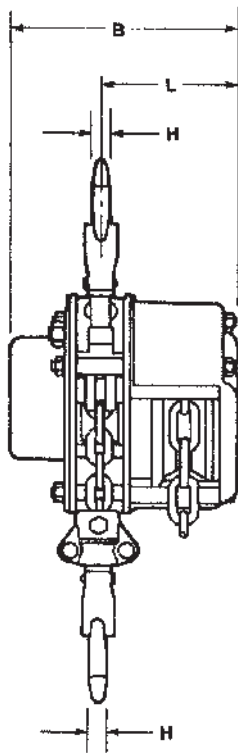
\* 25, 30, 40 and 50 Ton models available by special order — consult factory.

\*\* Standard lifts shown. Other lifts available — consult factory.

† LHH-20 through LHH-50 models have two hand chains.

## Dimensions model LHH

Model	A, mm	B, mm	C, mm	D, mm	E, mm	F, mm	G, mm	H, mm	J, mm	K, mm
1/2t	260	138	138	133	24	16	86	11	75	83
1t	284	151	159	152	29	8	103	16	91	87
1 1/2t	400	165	184	156	33	29	90	21	102	92
2t	381	184	214	216	35	32	125	22	116	98
3t	435	198	254	254	40	38	146	29	138	111
5t	575	165	283	186	48	46	173	35	165	92
8t	826	198	383	-	70	64	242	46	222	106
10t	826	198	383	-	70	64	242	46	222	106
12t	1286	198	516	-	75	72	284	62	271	106
15t	1286	198	516	-	75	72	284	62	271	106
20t	1330	308	733	-	79	90	319	90	318	154
25t	1343	368	733	-	79	89	319	90	318	184
30t	1651	429	752	-	106	126	462	113	386	214
40t	1862	511	752	-	103	157	565	133	448	256
50t	1972	657	752	-	121	171	603	175	514	329



# Yalehandy Ratchet lever hoist

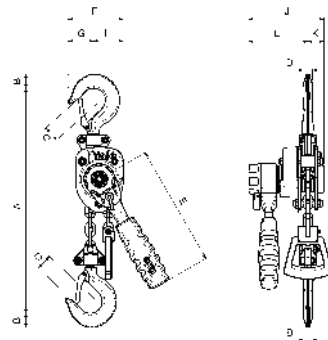
## Capacity 250 - 500 kg

The extreme low tare weight and the very compact design make the hoist easy to use even in confined working conditions. Due to the multitude of application possibilities e.g. in industry, trade and service this ratchet lever hoist is indispensable.



### Standard Features

- The enclosed design protects the internal parts from contamination.
- The short handlever is fitted with an ergonomic rubber grip.
- All parts of the disc type load brake are manufactured from high quality materials and are corrosion protected.
- Standard free chaining device to quickly attach the load or to pull the chain through the hoist in both directions.
- Alloyed steel link chain with zinc-plated resp. yellow chromated finish, in accordance with national and international standards and regulations.
- Drop forged suspension and load hooks are made from non-aging, high tensile steel and fitted with robust safety latches.



Yalehandy, 250 - 500 kg

### Dimensions model Yalehandy

Model	Yalehandy 250	Yalehandy 500
Amin., mm	240	282
B, mm	20	17
C, mm	21	24
D, mm	14	12
E, mm	160	160
F, mm	72	104
G, mm	33	38
H, mm	39	66
J, mm	98	116
K, mm	21	36
L, mm	77	80

### Specifications model Yalehandy

Model	Capacity kg	Standard lifting height m	Number of chain falls	Lift with one full lever turn mm	Handle pull at WLL daN	Headroom mm	Weight kg
Yalehandy 250	250	1.5	1	80	25	240	2
Yalehandy 500	500	1.5	1	40	25	282	3



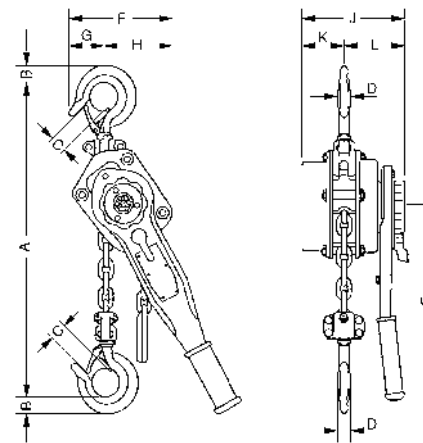
## UNOplus Ratchet lever hoist

**Capacity 750 - 6000 kg**

Further technical development turns the ratchet lever hoist into the successor of our proven UNO model. The versatile tool for lifting, pulling and securing of loads is characterised by its compact design and robust stamped steel construction.

### Standard Features

- Due to optimized gearing and improved bearings in the housing cover a minimum effort is required to operate the short hand lever.
- Steel hand wheel as standard.
- Automatic screw-and-disc type load brake with corrosion protected components.
- Standard free chaining device to quickly attach the load or to pull the chain through the hoist in both directions.
- Robust chain guide rollers eliminate fouling and jamming of chain on the load sheave.
- Sturdy bottom block with encapsulated bolt connections
- Alloyed steel link chain with zinc-plated resp. yellow chromated finish, in accordance with national and international standards and regulations.
- Drop forged suspension and load hooks are made from non-aging, high tensile steel and fitted with robust safety latches.



UNO plus, 750 - 6000 kg

### Options

- Explosion proof version (ATEX)

### Specifications model UNO plus

Model	Capacity kg	Standard lifting height m	Number of chain falls	Lift with one full lever turn mm	Handle pull at WLL daN	Headroom mm	Weight kg
UNO plus 750	750	1.5	1	20	14	295	7
UNO plus 1500	1500	1.5	1	22	22	410	13
UNO plus 3000	3000	1.5	1	17	34	510	22
UNO plus 6000	6000	1.5	2	9	35	690	32

### Dimensions model UNO plus

Model	UNO plus 750	UNO plus 1500	UNO plus 3000	UNO plus 6000
Amin., mm	295	410	510	690
B, mm	21	28	36	45
C, mm	24	32	40	44
D, mm	13	21	27	33
E, mm	235	330	380	380
F, mm	111	170	220	220
G, mm	33	80	100	100
H, mm	78	90	120	120
J, mm	142	180	210	210
K, mm	55	80	90	90
l, mm	87	100	120	120



**C 85**  
**Ratchet lever hoist**  
**with roller chain**

Capacity 750 - 10000 kg



**D 85**  
**Ratchet lever hoist**  
**with link chain**

Capacity 750 - 10000 kg

Almost unlimited applications in maintenance, mining, construction, steel fabrication, shipbuilding and utility work. Ideal for moving and positioning heavy machines and securing heavy loads, simplifies setting pipes etc. in manholes and trenches.

**Standard Features**

- Enclosed housing with housing cover, handlever and bottom block made from high tensile white malleable cast iron for overall rugged construction.
- The graphite cast iron load sheave for the link chain has precision machined chain pockets for accurate fit and durability of the load chain.
- The roller chain sprocket is made from heat treated chromium-molybdenum steel with precision machined teeth to ensure smooth chain movement.
- Alloyed steel link chain with zinc-plated resp. yellow chromated finish, in accordance with national and international standards and regulations.

**Options**

- All models can be equipped with an overload prevention device in the form of a slip clutch which is factory preset to approx. 25 % ± 15 % overload.
- Free chaining device to quickly attach the load or to pull the chain through the hoist in both directions.
- Hoist with sling chain.

**!** Since 1936 more than 1 million units have been built in Velbert.



Option:  
 Overload protection for  
 D 95 and C/D 85.

**!** This ratchet lever hoist is suitable for cargo tie down applications, since it has an automatic screw-and-disc type load brake preventing an unintentional loosening of the load.

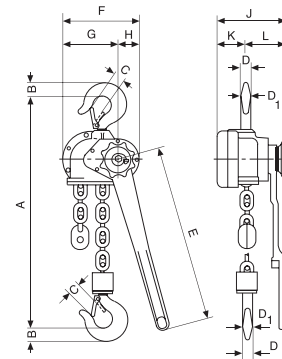


## Specifications model C85

Model	Capacity kg	Standard lifting height m	Number of chain falls	Lift with one full lever turn mm	Handle pull at WLL daN	Headroom mm	Weight kg
Pul-lift C85 750	750	1.5	1	115	38	322	9
Pul-lift C85 1500	1500	1.5	1	45	31	389	17
Pul-lift C85 3000	3000	1.5	1	36	40	403	22
Pul-lift C85 6000	6000	1.5	2	18	44	560	38
Pul-lift C85 10000	10000	1.5	3	12	44	785	67

## Dimensions model C85

Model	Pul-lift C85 750	Pul-lift C85 1500	Pul-lift C85 3000	Pul-lift C85 6000	Pul-lift C85 10000
Amin., mm	322	389	403	560	785
B, mm	21	27	35	48	61
C, mm	27	30	34	46	54
D, mm	15	20	25	40	40
D1, mm	17	23	25	40	45
E, mm	443	443	570	570	570
F, mm	112	189	197	197	305
G, mm	56	134	142	142	163
H, mm	56	55	55	55	142
J, mm	142	171	179	218	218
K, mm	39	72	76	76	76
L, mm	103	99	103	142	142



C/D85, 750 - 10000 kg

## Specifications model D85

Model	Capacity kg	Standard lifting height m	Number of chain falls	Lift with one full lever turn mm	Handle pull at WLL daN	Headroom mm	Weight kg
Pul-lift D85 750	750	1.5	1	111	38	322	8
Pul-lift D85 1500	1500	1.5	1	45	31	389	16
Pul-lift D85 3000	3000	1.5	1	33	40	403	20
Pul-lift D85 6000	6000	1.5	2	17	42	532	33
Pul-lift D85 10000	10000	1.5	3	11	37	805	60

## Dimensions model D85

Model	Pul-lift D85 750	Pul-lift D85 1500	Pul-lift D85 3000	Pul-lift D85 6000	Pul-lift D85 10000
Amin., mm	322	389	403	532	805
B, mm	21	27	35	48	61
C, mm	27	30	34	46	54
D, mm	15	20	25	40	40
D1, mm	17	23	25	40	45
E, mm	443	443	570	570	570
F, mm	112	189	197	197	305
G, mm	56	134	142	142	163
H, mm	56	55	55	55	142
J, mm	142	171	179	218	218
K, mm	39	72	76	76	76
L, mm	103	99	103	142	142



## D 95 Ratchet lever hoist with link chain



**Capacity 1500 - 3000 kg**

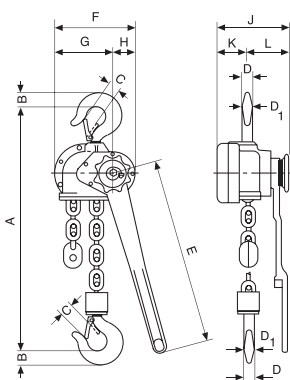
The D 95 in its cast malleable iron design has taken key technical features from the proven D 85 but excels due to low tare weight and an extremely small measurement between suspension and load hooks. A versatile unit for moving, positioning and securing loads.

### Standard Features

- Enclosed housing with housing cover, handlever and bottom block made from high tensile malleable cast iron for overall rugged construction.
- The short handlever is fitted with an ergonomic rubber grip.
- It has an automatically acting load pressure brake which works on the self-locking principal.  
For example, when used to secure loads an unintentional loosening of the brake is prevented when the load vibrates.
- Standard free chaining device to quickly attach the load or to pull the chain through the hoist in both directions.
- Alloyed steel link chain with zinc-plated resp. yellow chromated finish, in accordance with national and international standards and regulations.

### Options

- All models can be equipped with an overload prevention device in the form of a slip clutch which is factory preset to approx. 25 % ± 15 % overload.
- Hoist with sling chain.



D95, 1500 - 3000 kg

### Dimensions model D95

型号	D95 1500	D95 3000
Amin., mm	314	376
B, mm	23	30
C, mm	23	25
D, mm	18	22
D1, mm	18	22
E, mm	315	443
F, mm	156	189
G, mm	112	134
H, mm	44	55
J, mm	141	177
K, mm	49,5	72
L, mm	92	105

### Specifications model D95

Model	Capacity kg	Standard lifting height m	Number of chain falls	Lift with one full lever turn mm	Handle pull at WLL daN	Headroom mm	Weight kg
Pul-lift D95 1500	1500	1.5	1	35	27	314	10
Pul-lift D95 3000	3000	1.5	1	38	49	376	17



## AL Ratchet lever hoist



Capacity 750 - 3000 kg

Its low tare weight is an advantage. When the hoist has to be frequently carried over longer distances to different assignments. This universal ratchet hoist should not be missing in any service truck.

### Standard Features

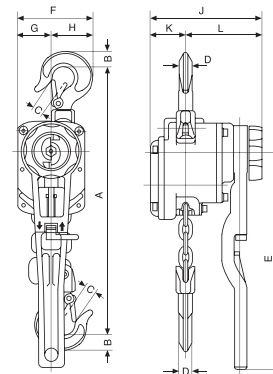
- The enclosed housing, hand lever and hand wheel are made from high quality aluminium.
- Low effort on hand lever.
- Due to precise needle bearings the hoist can be operated with little effort.
- Standard free chaining device to quickly attach the load or to pull the chain through the hoist in both directions.
- The chain guide is cast into the body to ensure faultless chain movement.
- Alloyed steel link chain with zinc-plated resp. yellow chromated finish, in accordance with national and international standards and regulations.

### Options

- Stainless steel load chains.

### Dimensions model AL

Model	AL 750	AL 1000	AL 1500	AL 3000
Amin., mm	315	325	380	455
B, mm	20	23	27	36
C, mm	22	23	26	33
D, mm	14	16	20	24
E, mm	300	300	300	400
F, mm	106	109	138	168
G, mm	47	47	60	75
H, mm	59	62	78	93
J, mm	154	154	177	212
K, mm	49	49	74	94
L, mm	105	105	103	118



AL, 750 - 3000 kg

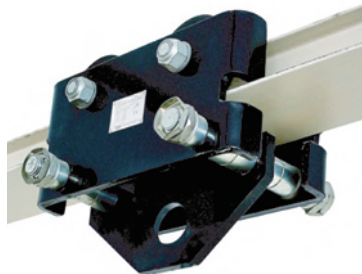
### Specifications model AL

Model	Capacity	Standard lifting height	Number of chain falls	Lift with one full lever turn	Handle pull at WLL	Headroom	Weight
	kg	m		mm	daN	mm	kg
AL 750	750	1.5	1	30	16	315	6
AL 1000	1000	1.5	1	30	22	325	7
AL 1500	1500	1.5	1	16	18	380	10
AL 3000	3000	1.5	1	14	28	455	18

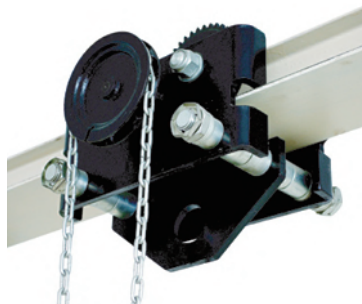
## CBTP/CBTG Monorail trolley

Capacity 500 - 5000 kg

The smooth rolling CBTP/CBTG trolley is the economical choice for most applications. Adjustable - Trolley easily adjusts to fit any beam flange within range of adjustment.

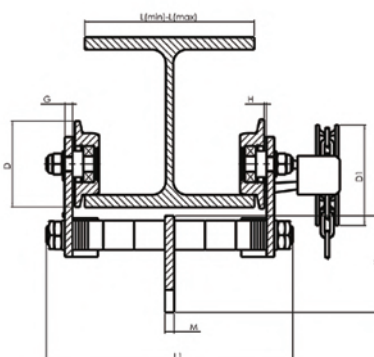
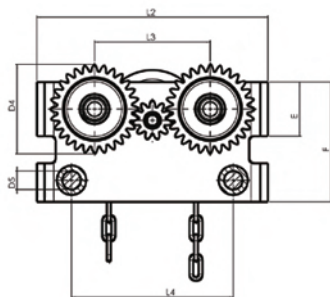
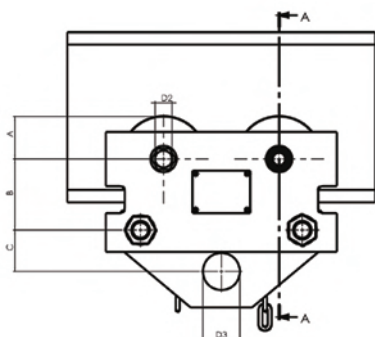


Model CBTP



Model CBTG

Model	Capacity (kg)	Beam flange width (mm)	Beam flange thickness (mm)	Curve radius min. (mm)	Weight (kg)
CBTP 500 CBTG 500	500	50-220	19	1000	8 15
CBTP 1000 CBTG 1000	1000	58-220	19	1000	11 16
CBTP 2000 CBTG 2000	2000	66-220	19	1300	19 22
CBTP 3000 CBTG 3000	3000	74-220	27	1500	37 42
CBTP 5000 CBTG 5000	5000	90-220	27	1600	58 65



Specifications (mm)	CBTP 500 kg	CBTP 1000 kg	CBTP 2000 kg	CBTP 3000 kg	CBTP 5000 kg	CBTG 500 kg	CBTG 1000 kg	CBTG 2000 kg	CBTG 3000 kg	CBTG 5000 kg
A	41.5	41.5	55.5	75	80	41.5	41.5	55.5	75	80
B	74	77	92	120	134	77	77	92	120	134
C	36.5	42	53.5	62	73	42	42	53.5	62	73
D	φ 83	φ 83	φ 111	φ 150	φ 160	φ 83	φ 83	φ 111	φ 150	φ 160
D1	-	-	-	-	-	φ 130	φ 130	φ 130	φ 164	φ 184
D2	φ 16	φ 16	φ 19	φ 25	φ 27	φ 16	φ 16	φ 19	φ 25	φ 27
D3	30	φ 35	φ 48	φ 60	φ 70	φ 35	φ 35	φ 48	φ 60	φ 70
D4	-	-	-	-	-	φ 92.9	φ 92.9	φ 115.53	φ 153.19	φ 172
D5	φ 16	φ 21	φ 25	φ 31	φ 37	φ 21	φ 21	φ 25	φ 31	φ 37
E	49	57	70	90	105	57	57	70	90	105
F	120	135	155	190	220	135	135	155	190	220
G	6	8	10	12	16	6	8	10	12	16
H	4	4	4	4	4	4	4	4	4	4
K	90	100	125	155	180	100	100	125	155	180
M	8	8	12	14	20	8	8	12	14	20
L(min)-L(max)	58-220	58-220	58-220	74-220	90-220	58-220	58-220	58-220	74-220	90-220
L1	300	310	320	340	350	310	310	320	340	350
L2	192	250	300	370	440	250	250	300	370	440
L3	90	130	150	180	209	130	130	150	180	209
L4	130	170	210	260	300	170	170	210	260	300



## HTP/HTG Push and geared type trolley

**Capacity 500 - 20000 kg**

The trolley enables the exact positioning or easy traversing of large loads with either manual or powered hoisting equipment.

### Standard Features

- It has excellent rolling features due to machined steel wheels mounted on prelubricated, encapsulated ball bearings.
- Adjustable to fit a wide range of beam widths and profiles (e.g. INP, IPE and IPB).
- Adjustments are made by rotating the clevis load bar which also ensures the centred positioning of the hoist in the clevis – no creeping to the left or the right.
- The trolley wheels are designed for a max. beam profile incline of 14 % (DIN 1025 - part 1).
- Trolleys are in accordance with the UVV and machinery directives.

### Options

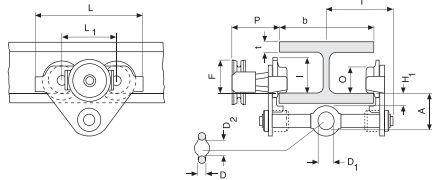
- Rotating hand chain guide.
- Stainless steel hand chains.
- Buffers
- Corrosion resistant version
- Explosion proof version (ATEX)
- Locking device to secure the trolley in position on the beam (park position e.g. on ships).

### Specifications model HTP & HTG

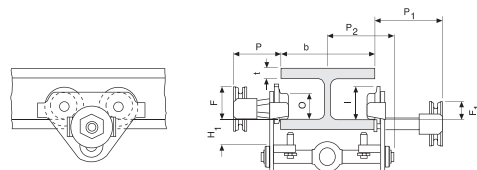
Model		Capacity kg	Beam flange width b - Size A mm	Beam flange width b - Size B mm	Beam flange thickness t max. - Size A mm	Beam flange thickness t max. - Size B mm	Curve radius min. - Size A m	Curve radius min. - Size B m	Weight kg	
- Push trolley	- Geared trolley								-P	-G
HTP 500	HTG 500	500	50 - 220	160 - 300	25	40	900	900	8 - 11	10 - 13
HTP 1000	HTG 1000	1000	50 - 220	160 - 300	25	40	900	900	9 - 12	11 - 14
HTP 2000	HTG 2000	2000	66 - 220	160 - 300	25	40	1150	1150	16 - 19	18 - 21
HTP 3000	HTG 3000	3000	74 - 220	160 - 300	25	40	1400	1400	32 - 36	35 - 39
HTP 5000	HTG 5000	5000	90 - 220	180 - 300	25	40	1800	1800	48 - 52	52 - 56
—	HTG 8000	8000	—	125 - 310	—	40	—	1800	—	104
—	HTG 10000	10000	—	125 - 310	—	40	—	1800	—	104
—	HTG 15000	15000	—	125 - 310	—	40	—	5000	—	230
—	HTG 20000	20000	—	125 - 310	—	40	—	5000	—	230

**Dimensions model HTP & HTG**

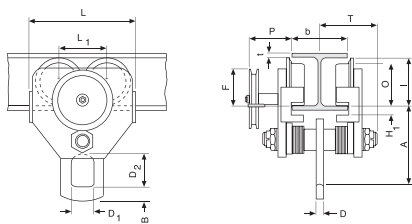
Model	HTP 500	HTP 1000	HTP 2000	HTP 3000	HTP 5000	HTG 500	HTG 1000	HTG 2000	HTG 3000	HTG 5000	HTG 8000	HTG 10000	HTG 15000	HTG 20000
A, mm	A=77 B=92	A=82.5 B=97.5	A=98.5 B=113.5	A=114 B=129	A=132.5 B=147.5	A=77 B=92	A=82.5 B=97.5	A=98.5 B=113.5	A=114 B=129	A=132.5 B=147.5	— B=276	— B=276	— B=270	— B=270
B, mm	—	—	—	—	—	—	—	—	—	—	52	52	70	70
D, mm	16	17	22	26	33	16	17	22	26	33	30	30	35	35
D1, mm	25	30	40	48	60	25	30	40	48	60	80	80	110	110
D2, mm	30	35	47	58	70	30	35	47	58	70	114	114	155	155
F (HTG), mm	—	—	—	—	—	91.5	91.5	90.5	107.5	149.5	113	113	113	113
F1, mm	46	46	46	46	45.5	46	46	46	46	45.5	—	—	—	—
H1, mm	A=30.5 B=45.5	A=30.5 B=45.5	A=30.5 B=45.5	A=30 B=45	A=30 B=45	A=30.5 B=45.5	A=30.5 B=45.5	A=30.5 B=45.5	A=30 B=45	A=30 B=45	— B=45	— B=45	— B=45	— B=45
I (HTP), mm	71.5	71.5	95.5	131	142.5	—	—	—	—	—	—	—	—	—
I (HTG), mm	—	—	—	—	—	76.5	76.5	98	132.5	148.5	170	170	170	170
L, mm	260	260	310	390	450	260	260	310	390	450	430	430	870	870
L1, mm	130	130	150	180	209	130	130	150	180	209	200	200	200	200
L2, mm	—	—	—	—	—	—	—	—	—	—	—	—	115	115
O, mm	60	60	80	112	125	60	60	80	112	125	150	150	150	150
P (HTG), mm	—	—	—	—	—	110	110	110	110	110	—	163	163	163
P1, mm	168	168	168	168	168	168	168	168	168	168	—	—	—	—
P2, mm	146	150	155	160	167.5	146	150	155	160	167.5	—	—	—	—
T, mm	A=146 B=187	A=150 B=187	A=155 B=189.5	A=160 B=191.5	A=167.5 B=191.5	A=146 B=187	A=150 B=187	A=155 B=189.5	A=160 B=191.5	A=167.5 B=191.5	— B=270	— B=270	— B=270	— B=270



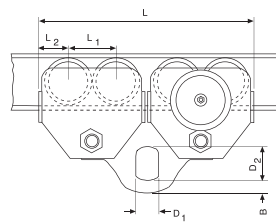
HTP/HTG, 500 - 5000 kg



HTP/G with locking device, 500 - 5000 kg



HTG, 10000 kg



HTG, 20000 kg



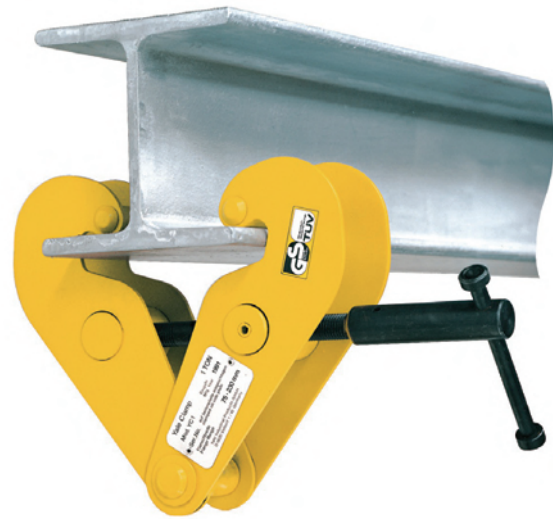
## YC Beam clamp

Capacity 1000 - 10000 kg

Provides a quick and versatile rigging point for hoisting equipment, pulley blocks or loads. Flexible application due to wide adjustment range. The central threaded spindle allows easy attachment and a safe and secure grip. The spindle can be secured against loosening.

### Options

- Can be supplied with shackle (other jaw capacities).

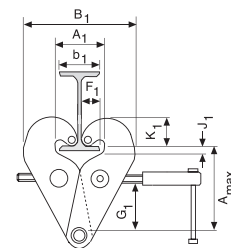
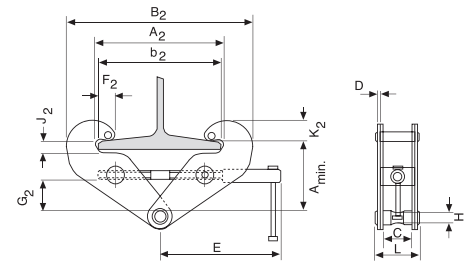


### Specifications model YC

Model	Capacity kg	Beam flange width mm	Weight kg
YC 1	1000	75 - 230	4
YC 2	2000	75 - 230	5
YC 3	3000	80 - 320	9
YC 5	5000	90 - 320	11
YC 10	10000	90 - 320	17

### Dimensions model YC

Model	YC 1	YC 2	YC 3	YC 5	YC 10
Amin., mm	115	115	180	180	175
Amax., mm	150	150	225	225	220
A1, mm	78	78	80	90	90
A2, mm	246	246	320	310	320
B1, mm	186	186	232	242	268
B2, mm	350	350	455	445	480
b1, mm	75	75	80	90	90
b2, mm	230	230	320	310	320
C, mm	50	50	70	70	70
D, mm	4	6	8	10	14
E, mm	215	215	255	255	275
F1, mm	34	35	35	35	35
F2, mm	17	18	21	21	20
G1, mm	82	82	120	116	110
G2, mm	44	44	75	75	66
H, mm	20	20	22	28	38
J1, mm	14	14	30	30	34
J2, mm	21	21	34	34	35
K1, mm	48	50	60	60	60
K2, mm	31	32	40	42	40
L, mm	84	94	122	129	146



Model YC



## YRC Beam clamp

**Capacity 1000 - 10000 kg**

Compact and rigid beam clamp to be used as a versatile rigging point for hoisting equipment and loads. Flexible application due to wide adjustment range. The central threaded spindle allows easy attachment and a safe and secure grip. The spindle can be secured against loosening.

### Standard Features

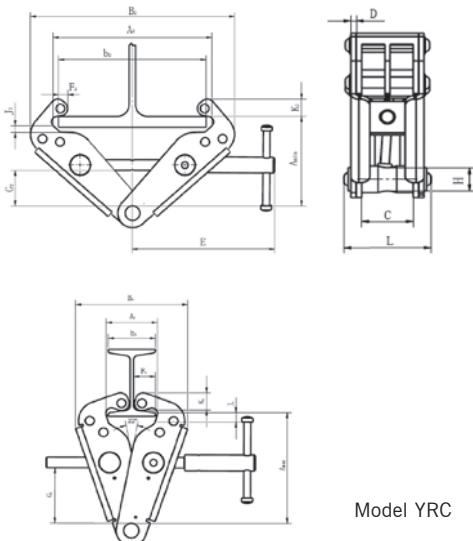
- Extremely robust due to reinforced side plates and jaws, for a safe attachment point even under demanding conditions.
- Easy handling due to proven threaded spindle mechanism.
- Flattened clamping jaws for use even in confined spaces.



### Specifications model YRC

Model	Capacity kg	Beam flange width mm	Weight kg
YRC 1	1000	75 - 230	5
YRC 2	2000	75 - 230	6
YRC 3	3000	80 - 320	13
YRC 5	5000	90 - 320	14
YRC 10	10000	90 - 320	24

Compare model YRC (left) and model YC (right) - model YRC is more robust to be used under demanding conditions.



Model YRC

### Dimensions model YRC

Model	YRC 1	YRC 2	YRC 3	YRC 5	YRC 10
Amin	135	135	183	183	202
Amax	165	165	224	224	241
A1	74	74	97	97	114
A2	238	238	330	330	340
B1	161	163	212	216	263
b1	68	68	80	80	90
B2	300	304	425	425	475
b2	230	230	320	320	320
C	45	58	69	69	69
D	4	6	8	10	12
E	212	212	303	303	304
F1	32	32	37	37	40
F2	19	19	30	30	31
G1	83	83	118	118	112
G2	53	53	79	79	80
H	28	28	32	32	44
J1	14	14	22	22	27
J2	26	26	37	37	41
K1	26	26	41	41	53
K2	26	26	32	32	40
L	77	97	117	125	133



## USA Hand Chain Hoist with hook suspension



**Capacity 250 – 6000 kg**

BUDGIT USA Hand Chain Hoists were boldly engineered to combine various materials with special shapes and incorporating features to ensure greater strength and ruggedness, true efficiency, smooth operation and greater reliability.

### Standard Features

- Light weight.
- Frame made from tough aluminum alloy casting with high strength qualities.
- Hand chain wheel cover of heavy pressed steel with special shape to guide the hand chain through gag-resistant operations.
- A proven load brake design of the Weston Type for fine, sure control.
- Overload device standard. Protection from excessive overloads.
- It is lightweight and compactly designed for portable, hook-on, use anywhere type service. The rugged design provides long life in industrial and construction service and is frequently used in rigging and off-vertical type lifting requirements.

### Options

- Spark and corrosion resistant features that include bronze alloy hooks; bronze block sleeve or aluminum lower block; special chrome nickel stainless steel alloy load chains; and aluminum or bronze hand chain.

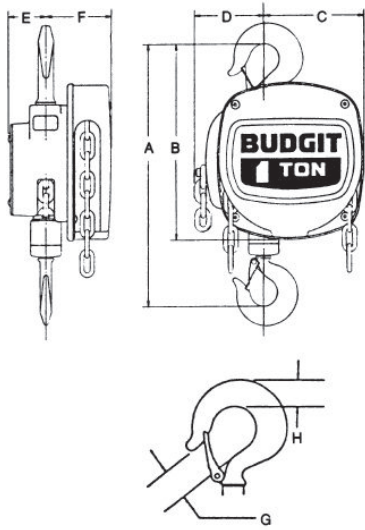
### Specifications model USA with hook suspension

Catalog No.		Capacity*	Standard lifting height	Number of chain falls	Chain overhauled to lift load one meter	Chain pull at WLL	Headroom	Net weight
Standard	Spark and corrosion resistance	ton	m		m	daN	mm	kg
8260	8260SR	0.25	2.4	1	25	11	318	12
8261	8261SR	0.5	2.4	1	25	22	318	12
8262	8262SR	1	2.4	1	35	32	337	15
8259	8259SR	1.5	2.4	1	69	27	413	23
8263	8263SR	2	2.4	1	69	35	413	23
8264	8264SR	3	2.4	2	137	27	695	34
8265	8265SR	4	2.4	2	137	36	695	34
8266	8266SR	5	2.4	3	206	32	772	48
8267	8267SR	6	2.4	3	206	37	772	48

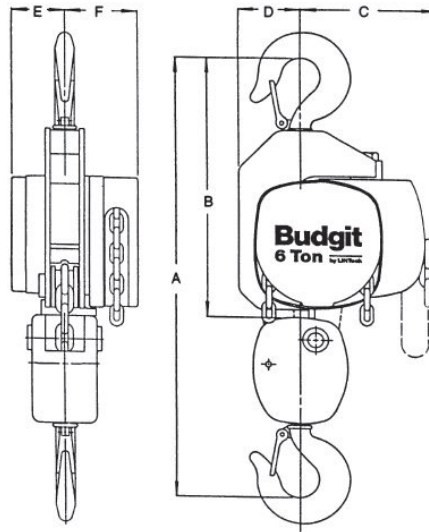
\* Capacity for standard models is metric ton rated. Capacity for spark and corrosion resistance models is US ton rated due to stainless steel load chain.

**Dimensions model USA with hook suspension**

Model	1/4 metric ton 1/4 US ton	1/2 metric ton 1/2 US ton	1 metric ton 1 US ton	1 1/2 metric ton 1 1/2 US ton	2 metric ton 2 US ton	3 metric ton 3 US ton	4 metric ton 4 US ton	5 metric ton 5 US ton	6 metric ton 6 US ton
A,mm	318	318	337	413	413	695	695	772	772
B,mm	229	229	267	305	305	384	384	432	432
C,mm	121	121	140	117	117	194	194	222	222
D,mm	95	95	95	184	184	108	108	102	102
E,mm	54	54	54	105	105	105	105	105	105
F,mm	89	89	92	98	98	98	98	98	98
G-upper,mm	25	25	29	30	30	34	34	43	43
G-lower,mm	25	25	25	29	29	34	34	43	43
H-upper,mm	26	26	29	35	35	37	37	46	46
H-lower,mm	26	26	26	29	29	37	37	46	46



USA, 1/4 - 2 metric ton/US ton



USA, 3 - 6 metric ton/US ton

## USA Army Type Trolley Hoist



Capacity 250 – 6000 kg

BUDGIT USA Hand Chain Hoists were boldly engineered to combine various materials with special shapes and incorporating features to ensure greater strength and ruggedness, true efficiency, smooth operation and greater reliability.

### Standard Features

- Light weight.
- Frame made from tough aluminum alloy casting with high strength qualities.
- Hand chain wheel cover of heavy pressed steel with special shape to guide the hand chain through gag-resistant operations.
- A proven load brake design of the Weston Type for fine, sure control.
- Overload device standard. Protection from excessive overloads.
- It has the advantage of decreasing the headroom with close coupled trolley connection. The trolley hoist delivers tighter headroom where just a couple of inches greater lift is of utmost importance.
- USA Army Type Trolley Hoist is a variation of the hook suspended hand chain hoist. Rather than the standard hook suspension, trolley hoists have a lug suspension to permit a rigid mount trolley to be attached to the hoist...making up the trolley hoist unit. Trolley can be either a push or hand geared model. The 1-ton model, because of its compactness, requires a special hand chain wheel extension for the chain wheel to clear a monorail beam. Subsequently, the trolley for the 1-ton unit includes anti-tip guide rollers to prevent trolley tipping when the hand chain is pulled to raise or lower loads.



### Options

- Spark and corrosion resistant features that include bronze alloy hooks; bronze block sleeve or aluminum lower block; special chrome nickel stainless steel alloy load chains; and aluminum or bronze hand chain.

### Specifications model USA Army Type trolley hoist

Catalog No.		Capacity* ton	Standard lifting height m	Number of chain falls	Chain overhauled to lift load one meter m	Chain pull at WLL daN	Headroom mm	Minimum curve radius m	Net weight kg
Standard	Spark & Corrosion Resistance								
<b>With Push Trolley</b>									
8310	8310SR	0.25	2.4	1	25	11	308	0.8	19
8311	8311SR	0.5	2.4	1	25	22	308	0.8	19
8312	8312SR	1	2.4	1	35	32	308	1.1	27
8313**	8313SR	1.5	2.4	1	69	27	400	1.2	45
8314	831SR	2	2.4	1	69	35	400	1.2	45
8415	8415SR	3	2.4	2	137	27	613	1.2	68
8316	8316SR	4	2.4	2	137	36	587	1.2	114
8317	8317SR	5	2.4	3	206	32	645	1.8	127
8318	8318SR	6	2.4	3	206	37	645	1.8	127
<b>With Geared Trolley</b>									
8321***	8321SR	0.25	2.4	1	25	11	308	0.8	30
8322	8322SR	0.5	2.4	1	25	22	308	0.8	30
8323	8323SR	1	2.4	1	35	32	308	1.1	35
8324	8324SR	1.5	2.4	1	69	27	400	1.2	51
8325	8325SR	2	2.4	1	69	35	400	1.2	51
8326	8326SR	3	2.4	2	137	27	613	1.2	75
8327	8327SR	4	2.4	2	137	36	587	1.2	120
8328	8328SR	5	2.4	3	206	32	645	1.8	134

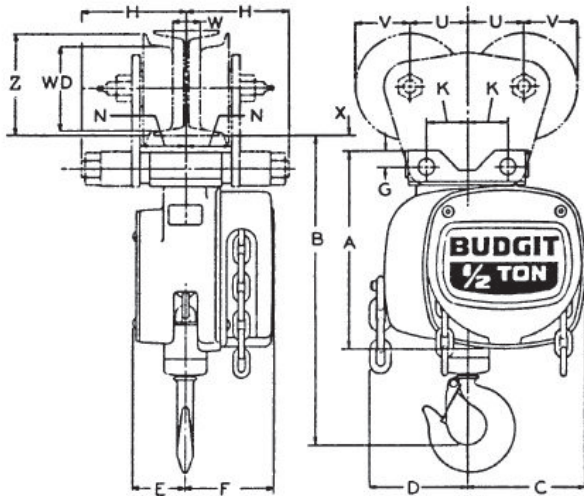
\* Capacity for standard models is metric ton rated. Capacity for spark and corrosion resistance models is US ton rated due to stainless steel load chain.

\*\* In order to maintain the best possible headroom, the 1-ton capacity BUDGIT USA Trolley Hoist has an extended hand chain wheel. For push type trolley applications with the extended hand chain wheel, a push trolley with anti-tip roller is utilized on the side of the beam opposite the hoist hand chain.

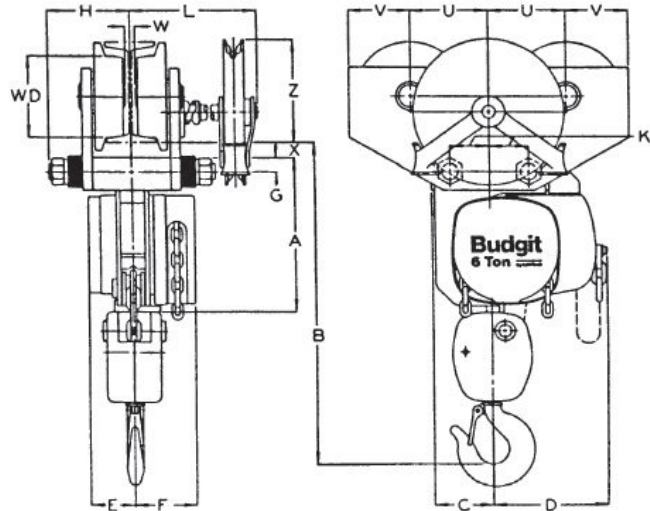
\*\*\* Catalog No. 8321, ½ ton hoist with hand geared trolley uses the 1-ton hand geared trolley. For dimensions U, V, W, Y, Z, WD and Minimum Radius Curve, use 1 ton dimensions.

**Dimensions model USA Army Type trolley hoist**

Model	1/4 metric ton 1/4 US ton	1/2 metric ton 1/2 US ton	1 metric ton 1 US ton	1 1/2 metric ton 1 1/2 US ton	2 metric ton 2 US ton	3 metric ton 3 US ton	4 metric ton 4 US ton	5 metric ton 5 US ton	6 metric ton 6 US ton
A, mm	197	197	222	276	276	295	295	308	308
B.min, mm	308	308	308	400	400	645	638	679	679
C, mm	121	121	140	117	117	108	108	114	114
D, mm	95	95	95	184	184	194	194	222	222
E, mm	54	54	54	105	105	105	105	105	105
F, mm	89	89	181	98	98	98	98	98	98
G, mm	16	16	16	21	21	27	27	27	27
K, mm	40	40	40	64	64	76	76	76	76
L.max, mm	248	248	248	260	260	464	448	448	448
U, mm	56	56	78	87	87	87	116	152	152
V, mm	54	54	68	97	97	110	83	122	122
W.min, mm	16	16	32	32	32	25	40	21	21
X.min, mm	16	16	16	16	16	16	16	16	16
Z.max, mm	100	100	124	152	152	149	137	203	203
WD, mm	79	79	102	125	125	125	102	165	165



USA Army Type trolley hoist with push trolley, 1/4 - 6 metric ton/US ton



USA Army Type trolley hoist with geared trolley, 1/4 - 6 metric ton/US ton





## Cyclone Hand chain hoist



Capacity 250 - 10000 kg

One of the most popular and reliable hoists ever designed.

- Most interchangeability of parts in the industry
- Standard Load Limiter for simple, automatic overload protection
- Enclosed contoured Weston-type automatic brake for positive load control
- High-efficiency spur gearing for greater lift with minimum effort
- Rugged Hoistaloy chain for added strength and durability
- Fully machined, forged liftwheel pockets for easier lifting and smooth free chaining
- High-strength aluminum alloy castings in frame and covers
- Inspected over 75 times to meet or exceed HMI and ASME/ANSI performance and safety standards
- Metric rated

### Options

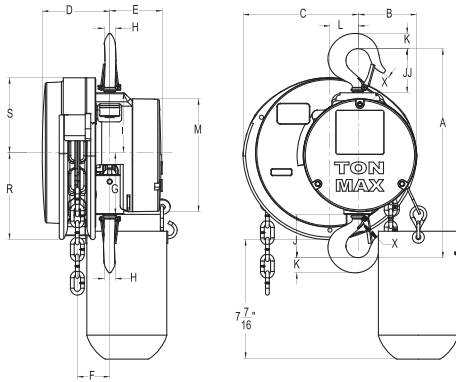
- Fabric chain bags
- Metal chain containers
- Unwelded hand chain
- Latchlok hooks
- Bullard hooks
- Eye-type suspension
- Spark-resistant version (include zinc-plated load and hand chain, bronze hooks)

### Specifications model Cyclone

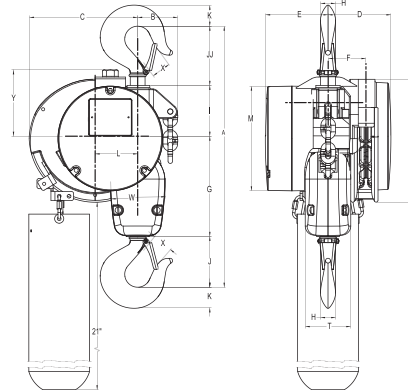
Model	Capacity kg	Standard lifting height m	Number of chain falls	Chain overhauled to lift load one meter m	Chain pull at WLL daN	Headroom mm	Weight kg
Cyclone 250	250	3	1	22.5	10	327	18
Cyclone 500	500	3	1	22.5	21	327	18
Cyclone 1000	1000	3	1	30	31	356	20
Cyclone 1500	1500	3	1	40.5	36	440	31
Cyclone 2000	2000	3	1	52	37	440	31
Cyclone 3000	3000	3	2	81	38	546	47
Cyclone 4000	4000	3	2	104	40	546	47
Cyclone 5000	5000	3	3	156	34	616	63
Cyclone 6000	6000	3	3	156	41	641	64
Cyclone 8000	8000	3	4	208	40	876	112
Cyclone 10000	10000	3	5	260	43	902	113

## Dimensions model Cyclone

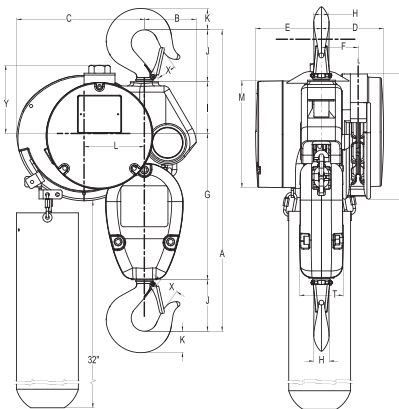
Model	1/2 t & 1/4 t	1 t	1 1/2 t & 2 t	3 t & 4 t	5 t	6 t	8 t	10 t
A, mm	327	356	440	546	616	641	876	902
B, mm	94	94	106	84	106	106	121	121
C, mm	183	183	170	227	262	262	324	324
D, mm	105	105	129	129	124	124	148	148
E, mm	83	83	122	122	127	127	103	103
F, mm	52	52	79	76	75	75	95	95
G, mm	98	95	132	210	300	300	437	437
H, mm	27	30	29	32	32	35	43	46
I, mm	95	95	122	108	106	106	154	154
J, mm	67	75	92	105	105	117	143	156
JJ, mm	67	90	94	124	—	—	—	—
K, mm	24	29	38	43	43	48	57	65
L, mm	44	44	32	89	124	124	186	186
M, mm	179	179	219	219	219	219	219	219
N, mm	—	—	—	276	276	276	276	276
R, mm	138	138	138	—	—	—	—	—
S, mm	119	119	119	—	—	—	—	—
T, mm	—	—	—	98	102	102	162	162
W, mm	—	—	—	114	159	159	164	164
X, mm	26	29	33	41	41	44	52	59
Y, mm	—	—	—	130	149	149	141	141



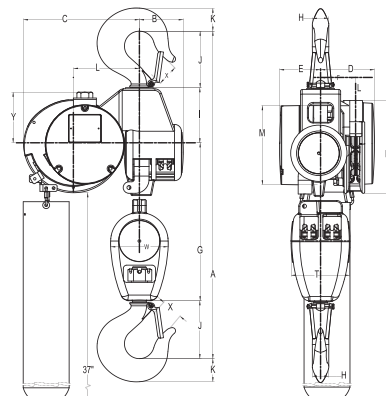
Cyclone, 250 - 2000 kg



Cyclone, 3000 - 4000 kg



Cyclone, 5000 - 6000 kg



Cyclone, 8000 - 10000 kg



## Cyclone Army Type Trolley Hoist



Capacity 250 - 12000 kg

Same quality and performance as the Cyclone in a compact, lowheadroom integral trolley mount. Ideal for applications requiring amoveable hoist including:

- Rugged steel loadbars connected directly to hoist frame
- Reduced headroom, side clearances and end approach for easy maneuvering of heavy loads in tight places
- Standard Load Limiter automatic overload protection
- Plain and geared trolley mounts in capacities from 1/4 to 12 tons
- Universal tread trolley wheels for operation on sloped or flat flanged beams
- Chain containers, zinc-plated load and hand chain, aluminum unwelded hand chain, Latchlok hooks, bronze hooks, bullard hooks, larger beam trolleys, trolley guards, and units without Load Limiter optional, depending on capacity
- Metric rated

### Options

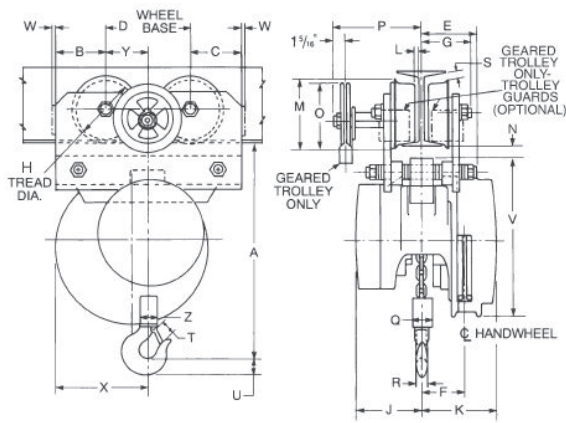
- Fabric chain bags
- Metal chain containers
- Unwelded hand chain
- Latchlok hooks
- Bullard hooks
- Eye-type suspension
- Spark-resistant version (include zinc-plated load and hand chain, bronze hooks)

### Specifications model Cyclone Army type trolley hoist

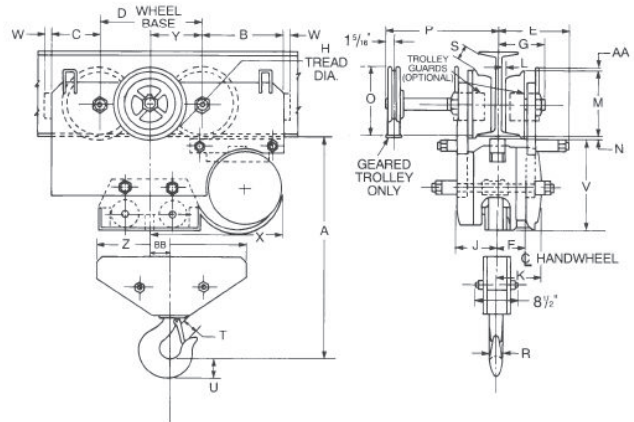
Model		Capacity kg	Standard lifting height m	Number of chain falls	Beam flange width mm	Chain overhauled to lift load one meter m	Chain pull at WLL daN	Headroom mm	Curve radius min. mm	Weight kg	
- Push trolley	- Geared trolley									- P	- G
4521	4541	250	3	1	67-140	22.5	10	298	762	31	50
4522	4542	500	3	1	67-140	22.5	21	298	762	31	50
4524	4544	1000	3	1	67-140	30	31	298	762	37	60
4525	4545	1500	3	1	86-143	40.5	36	389	762	64	76
4526	4546	2000	3	1	86-143	52	37	389	762	64	76
4527	4547	3000	3	2	86-143	81	38	479	1219	86	108
4528	4548	4000	3	2	86-143	104	39	479	1219	86	108
4529	4549	5000	3	3	102-159	156	33	597	1524	126	141
4530	4550	6000	3	3	102-159	156	40	610	1524	128	143
4531	4551	8000	3	4	127-203	208	41	718	1829	239	273
4532	4552	10000	3	5	127-203	260	42	718	1829	243	277
4533	4553	12000	3	6	140-203	312	43	772	2438	484	498

## Dimensions model Cyclone Army type trolley hoist

Model	1/4 t, 1/2 t & 1 t		1 1/2 t & 2 t		3 t & 4 t		5 t		6 t		8 t		10 t		12 t	
	Push	Geared	Push	Geared	Push	Geared	Push	Geared	Push	Geared	Push	Geared	Push	Geared	Push	Geared
A, mm	298	300	389	389	479	479	597	597	610	610	718	718	718	718	772	772
B, mm	106	106	94	94	146	146	165	165	165	165	227	227	227	227	276	276
C, mm	65	65	94	94	87	87	95	95	95	95	133	133	133	133	183	183
D, mm	152	152	152	152	175	175	197	197	197	197	279	279	279	279	279	279
E, mm	114	125	127	127	138	138	156	156	156	156	184	184	184	184	184	184
F, mm	52	52	79	79	76	76	71	71	71	71	76	76	76	76	76	76
G, mm	76	95	92	95	110	110	125	125	125	125	141	141	141	141	148	148
H, mm	79	102	121	102	127	127	152	152	152	152	203	203	203	203	203	203
J, mm	83	83	122	122	122	122	127	127	127	127	122	122	122	122	122	122
K, mm	105	105	129	129	129	129	124	124	124	124	129	129	129	129	129	129
L, mm	8	8	13	8	6	6	10	10	10	10	13	13	13	13	27	27
M, mm	102	121	141	121	149	149	178	178	178	178	240	240	240	240	241	241
N, mm	13	14	14	14	27	27	27	27	27	27	13	13	13	13	11	11
O, mm	—	141	—	141	156	156	171	171	171	171	192	192	192	192	183	183
P, mm	—	254	—	254	227	227	265	265	265	265	291	291	291	291	297	297
Q, mm	51	51	64	64	98	98	102	102	102	102	303	303	—	—	—	—
R, mm	17	17	29	29	32	32	32	32	35	35	46	46	46	46	60	60
S, mm	2	24	5	24	24	24	19	19	19	19	56	56	56	56	129	129
T, mm	25	25	35	35	41	41	41	41	44	44	59	59	59	59	76	76
U, mm	22	22	29	29	43	43	43	43	48	48	65	65	65	65	76	76
V, mm	257	257	289	289	289	289	289	289	289	289	295	295	295	295	295	295
W, mm	6	10	10	10	13	13	16	16	16	16	16	16	16	16	16	16
X, mm	183	183	170	170	227	227	262	262	262	262	367	367	367	367	416	416
Y, mm	76	76	76	76	87	87	98	98	98	98	140	140	140	140	140	140
Z, mm	51	51	64	64	114	114	159	159	159	159	354	354	462	462	551	551
AA, mm	—	—	—	—	—	—	—	—	—	—	10	10	10	10	10	10
BB, mm	—	—	—	—	—	—	—	—	—	—	49	49	0	0	0	0



Model Cyclone Army type trolley hoist - push trolley



Model Cyclone Army type trolley hoist - geared trolley



## Cyclone Trolley Hoist For Low Headroom

Capacity 500 - 6000 kg

Cyclone and trolley all in one unit for low headroom applications features:

### Standard Features

- Crowned tread and flanged wheels to minimize rolling friction
- Simple, efficient design
- Reduced headroom, side clearances and end approach for easy maneuvering of loads in tight places
- Plain trolley mounts in capacities from 1/2 to 6 tons
- Geared trolley mounts in capacities from 1 1/2 to 6 tons
- Chain containers, zinc-plated load and hand chain, aluminum unwelded hand chain, Latchlok hooks, bronze hooks, bullard hooks, larger beam trolleys, trolley guards and units without Load Limiter optional, depending on capacity
- Standard Load Limiter/automatic overload protection
- Metric rated

### Options

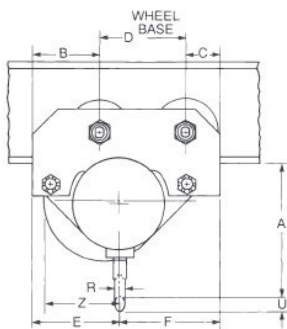
- Fabric chain bags
- Metal chain containers
- Unwelded hand chain
- Latchlok hooks
- Bullard hooks
- Eye-type suspension
- Spark-resistant version (include zinc-plated load and hand chain, bronze hooks)

### Specifications model Cyclone low headroom trolley hoist

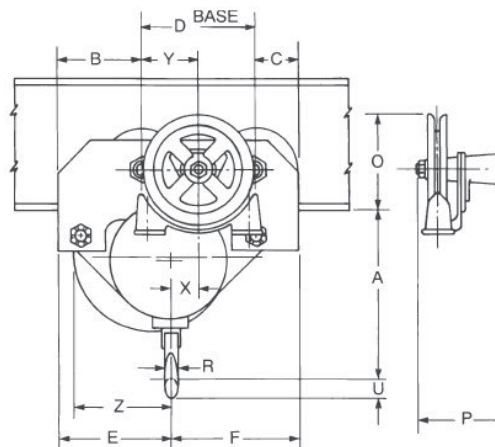
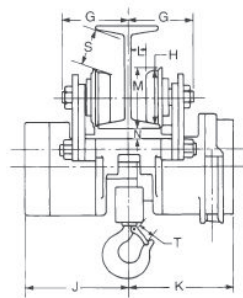
Model		Capacity kg	Standard lifting height m	Number of chain falls	Beam flange width mm	Chain overhauled to lift load one meter m	Chain pull at WLL daN	Headroom mm	Curve radius min. mm	Weight kg	
- Push trolley	- Geared trolley									- P	- G
4832	—	500	3	1	86-127	22.5	21	225	914	41	—
4834	—	1000	3	1	86-127	30	31	235	914	44	—
4835	4925	1500	3	1	92-140	40.5	36	318	1219	86	97
4836	4926	2000	3	1	92-140	52	37	318	1219	86	100
4837	4927	3000	3	2	92-140	81	38	359	1219	95	109
4838	4928	4000	3	2	102-178	104	40	425	2438	143	172
4839	4929	5000	3	3	102-178	156	34	464	2438	153	163
4840	4930	6000	3	3	102-178	156	41	476	2438	176	162

## Dimensions model Cyclone low headroom trolley hoist

Model	1/2 t	1 t	1 1/2 t & 2 t	3 t	4 t	5 t	6 t
A, mm	225	235	318	359	425	464	476
B, mm	92	92	152	152	187	187	187
C, mm	92	92	79	79	102	102	102
D, mm	165	165	197	197	229	229	229
E, mm	175	171	194	267	279	302	302
F, mm	171	175	235	162	238	216	216
G, mm	95	95	130	130	149	149	149
H, mm	121	121	117	117	149	149	149
J, mm	152	152	237	237	268	268	268
K, mm	206	206	244	244	279	279	279
L, mm	13	13	13	13	13	13	13
M, mm	138	138	137	137	171	171	171
N, mm	25	25	25	25	29	29	29
O, mm	—	—	171	171	165	165	165
P, mm	—	—	124	124	108	108	108
R, mm	17	21	29	32	32	32	35
S, mm	8	8	35	35	27	27	27
T, mm	26	29	33	41	41	41	44
U, mm	24	29	38	43	43	43	48
W, mm	—	—	143	143	178	178	178
X, mm	—	—	57	16	22	—	—
Y, mm	—	—	98	98	114	114	114
Z, mm	187	184	168	241	241	264	264



Model Cyclone low headroom trolley hoist - push trolley



Model Cyclone low headroom trolley hoist - geared trolley





## Zephyr Hook Suspended Hoist



Capacity 500 – 25000 kg

Chester Zephyr steel framed hook suspended hoists are designed, built and tested to rigid specifications of quality and performance, to exceed industry standards. The Chester Zephyr is a thoroughly engineered hoist from every standpoint. With available capacities from 1/4 through 25 ton, its simplicity of design makes it easy to service and maintain.

### Standard Features

- Lightweight steel frame,
- Heavy duty steel covers, ball bearing supported load shaft and a durable, efficient, grease lubricated planetary gear train.
- Gears and pinions are alloy steel, machine cut, heat treated and mounted on heavy duty roller bearings.
- Load and hand chain guides assure smooth, trouble free operation.
- A fast acting Weston Style brake provides smooth, positive load handling.
- Precision formed alloy steel load chain runs in a reversible 5 or 6 pocket load sheave.
- The Zephyr design is easily adaptable to meet the special requirements of most applications.

### Options

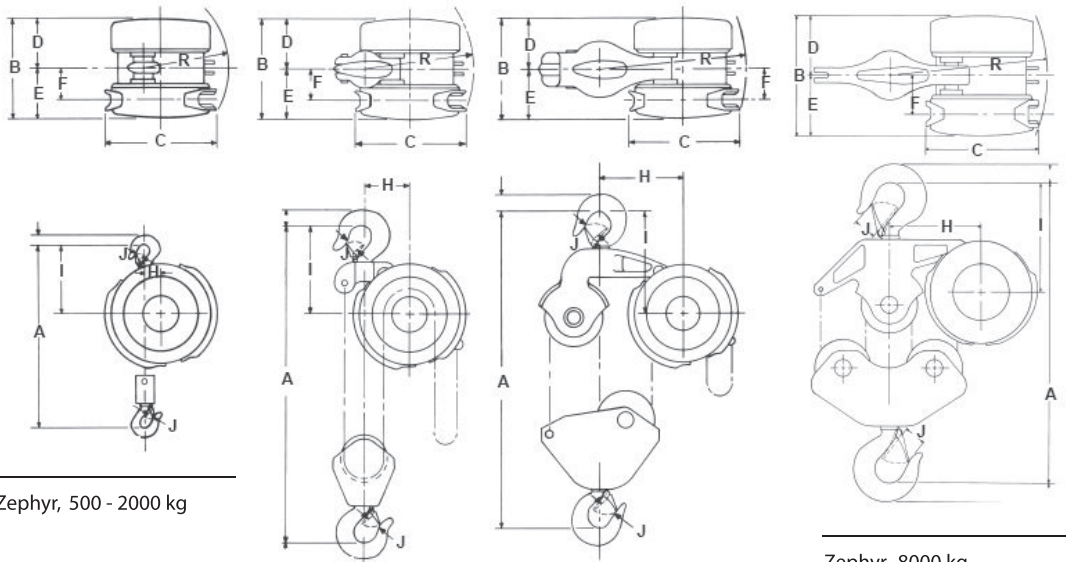
- Chain container.
- Spark-resistance features.
- Corrosion-resistance features.

### Specifications model Zephyr hook type hoist

Model	Capacity kg	Standard lifting height m	Number of chain falls	Chain overhauled to lift load one meter m	Chain pull at WLL daN	Headroom mm	Net weight kg
130-1/2	500	2.4	1	33	14	308	20
130-1	1000	2.4	1	33	28	308	21
130-1 1/2	1500	2.4	1	58	26	403	38
130-2	2000	2.4	1	58	34	403	38
130-3	3000	2.4	2	116	27	597	55
130-4	4000	2.4	2	116	36	622	59
130-5	5000	2.4	3	174	29	648	83
130-6	6000	2.4	3	174	35	648	83
130-8	8000	2.4	4	232	36	679	110
130-10	10000	2.4	5	290	38	781	140
130-12	12000	2.4	6	174x2	35x2	1260	297
130-16	16000	2.4	8	232x2	36x2	1359	371
130-20	20000	2.4	10	290x2	38x2	1432	473
130-25	25000	2.4	12	348x2	42x2	1432	482

## Dimensions model Zephyr hook type hoist

Model	1/2 t & 1 t	1 1/2 t & 2 t	3 t	4 t	5 t & 6 t	8 t	10 t	12 t	16 t	20 t	25 t
A, mm	308	403	597	622	648	679	781	1260	1359	1432	1432
B, mm	216	254	254	254	254	254	254	371	416	464	511
C, mm	222	292	292	292	292	292	292	292	292	292	292
D, mm	108	127	127	127	127	127	127	186	208	232	256
E, mm	108	127	127	127	127	127	127	186	208	232	256
F, mm	76	83	83	83	83	83	83	141	164	187	211
H, mm	35	44	124	124	162	216	260	283	283	283	283
I, mm	164	194	232	244	267	279	270	344	384	384	384
J, mm	25	29	34	43	43	52	57	76	92	92	92
R, mm	178	216	292	292	343	356	432	470	476	487	500
S, mm	—	—	—	—	—	—	235	—	—	—	—

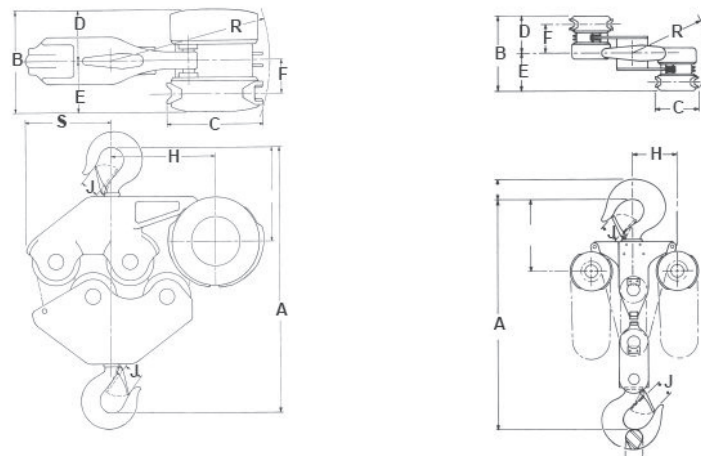


Zephyr, 500 - 2000 kg

Zephyr, 3000 - 4000 kg

Zephyr, 5000 - 6000 kg

Zephyr, 8000 kg



Zephyr, 10000 kg

Zephyr, 12000 - 25000 kg



## Zephyr Army Type Trolley Hoist



**Capacity 500 – 10000 kg**

The Chester Zephyr Army Type Geared Trolley Hoist consists of the standard Zephyr Hoist mechanism and an integral trolley which minimizes headroom when compared to a hoist suspended from a standard trolley.

**1/2 to 2 TON.** Zephyr Army Trolley hoists in these capacities are notable for light weight and ability to traverse minimum radius curves freely, since the trolley units swivel. Construction is ingeniously simple.

A standard Zephyr spur geared hoist is suspended on a special load bar carried at each end by a lifetime lubricated precision ball bearing g-equipped two wheel trolley. Trolley units are adjustable to beam size and are interchangeable. Plain trolley may be replaced with geared unit at any time, as required. Wheels have convex-machined treads that will maintain roundness through long use.

**3 to 10 TON.** These units are compact combinations of the larger-capacity Zephyr spur geared hoists with integrated four-wheel trolleys with duo-sealed Timken-bearings. The result is a unit of minimum dimensions retaining full operating advantages. Modified conventional Army Type construction not only provides protection of heavy gauge rolled steel side plates, but also added advantages of adjustability to beam sizes, as well as adaptability to comparatively tight minimum radius track curves. All trolley wheels are easily adjustable for bearing wear.

Zephyr Army Type Hoists are available for wide flange sections, monorail runways, or I-beams outside the normal adjustment range. Consult factory for details.

### Options

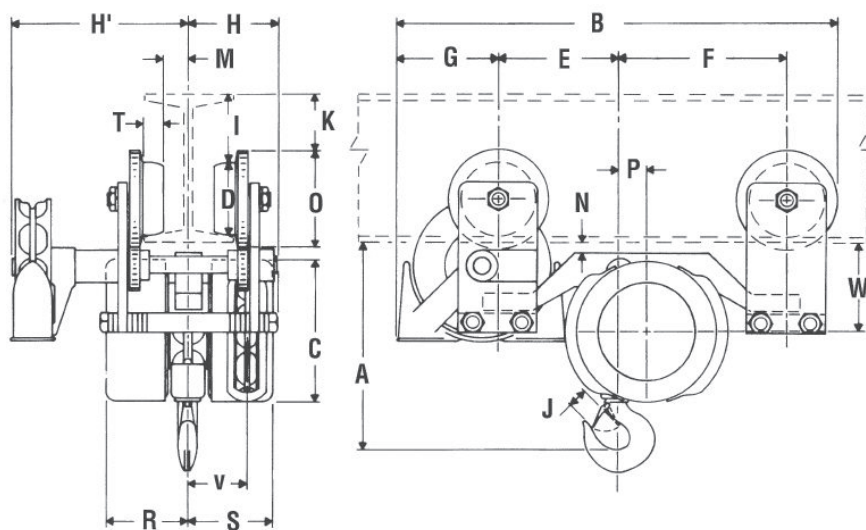
- Track clamps
- Load limiters
- Trolley bumpers and drop stops
- Chain containers
- Spark and corrosion resistance construction

### Specifications model Zephyr Army Type trolley hoist

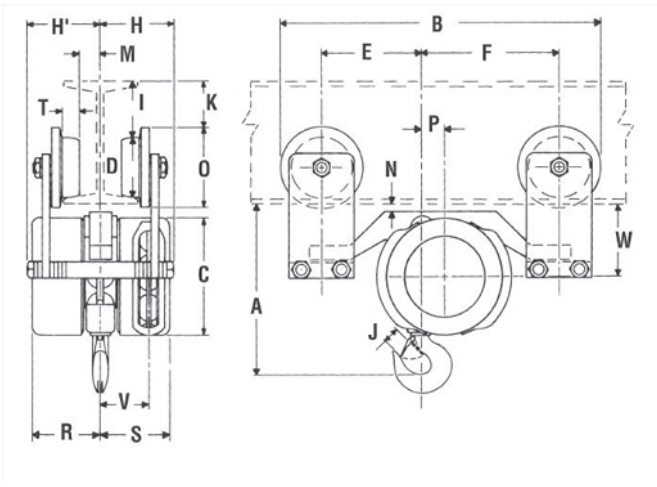
Model		Capacity kg	Standard lifting height m	Number of chain falls	Beam flange width mm	Headroom mm	Curve radius min. mm	Net weight kg	
- Push trolley	- Geared trolley							-P	-G
1311-1/2	1312-1/2	500	2.4	1	102-254	273	533	43	63
1311-1	1312-1	1000	2.4	1	127-254	276	533	49	66
1311-1 1/2	1312-1 1/2	1500	2.4	1	152-381	343	762	77	88
1311-2	1312-2	2000	2.4	1	152-381	343	762	77	88
1311-3	1312-3	3000	2.4	2	203-457	498	914	100	118
1311-4	1312-4	4000	2.4	2	203-610	511	914	124	134
1311-5	1312-5	5000	2.4	3	254-508	597	1219	170	181
1311-6	1312-6	6000	2.4	3	254-508	597	1219	170	181
1311-8	1312-8	8000	2.4	4	254-610	625	2134	237	255
1311-10	1312-10	10000	2.4	5	305-610	635	2286	305	319

## Dimensions model Zephyr Army Type trolley hoist

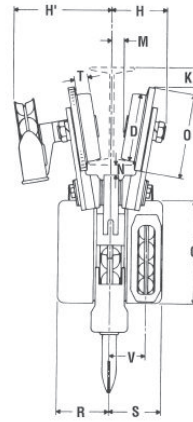
Model	1/2 t	1 t		1 1/2 t		2 t		3 t	4 t	5 t	6 t	8 t	10 t
		Push	Geared	Push	Geared	Push	Geared						
A, mm	276	276	276	343	343	343	343	498	511	597	597	625	635
B, mm	467	502	572	622	692	622	692	425	425	495	495	533	603
C, mm	184	184	184	248	248	248	248	248	248	248	248	248	248
D, mm	73	95	95	114	114	114	114	162	162	183	183	210	248
E, mm	156	156	156	191	191	191	191	108	108	127	127	133	152
F, mm	219	219	219	279	279	279	279	—	—	—	—	—	—
G, mm	—	—	133	—	146	—	146	—	—	—	—	—	—
H, mm	108	117	122	127	116	127	116	130	130	146	146	159	159
H', mm	—	—	219	—	225	—	225	279	279	332	332	343	324
I, mm	21	24	24	25	25	25	25	—	—	—	—	—	—
J, mm	25	25	25	29	29	29	29	34	43	43	43	52	57
K, mm	11	8	8	8	8	8	8	16	16	41	41	10	22
L, mm	—	—	—	—	—	—	—	279	279	302	302	356	419
M, mm	13	13	13	17	17	17	17	19	19	29	29	13	13
N, mm	16	16	16	11	11	11	11	29	29	25	25	44	19
O, mm	92	127	127	152	152	152	152	203	203	229	229	254	297
P, mm	35	35	35	44	44	44	44	—	—	—	—	—	—
R, mm	108	108	108	127	127	127	127	127	127	127	127	127	127
S, mm	108	108	108	127	127	127	127	127	127	127	127	127	127
T, mm	22	27	27	28	28	28	28	33	33	37	37	43	44
V, mm	76	76	76	83	83	83	83	83	83	83	83	83	83
W, mm	116	116	116	138	138	138	138	210	210	219	219	219	165



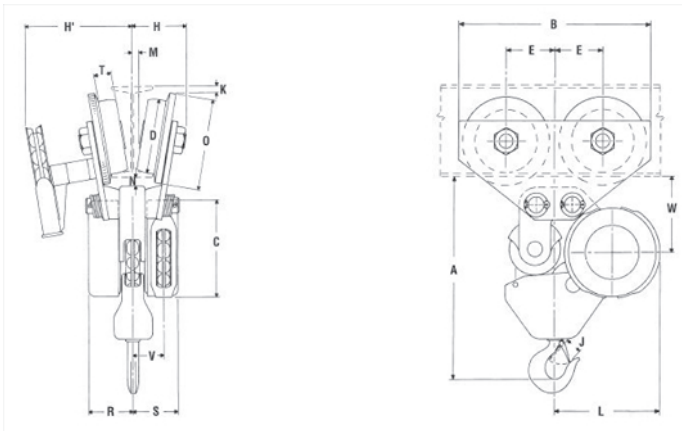
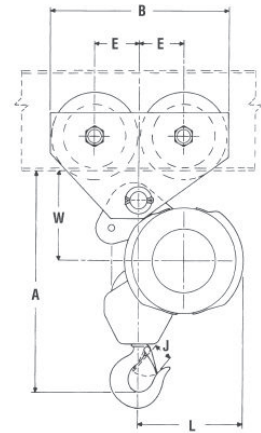
Zephyr Army Type trolley hoist with push trolley, 500-2000kg



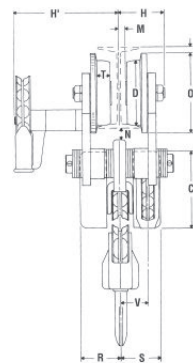
Zephyr Army Type trolley hoist with geared trolley, 1000-2000kg



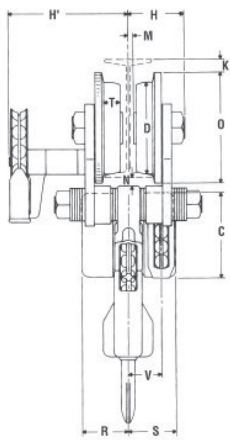
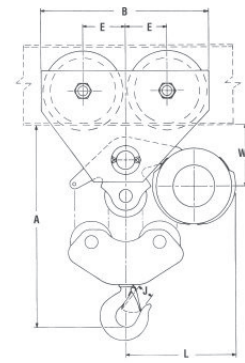
Zephyr Army Type trolley hoist, push & geared, 3000-4000kg



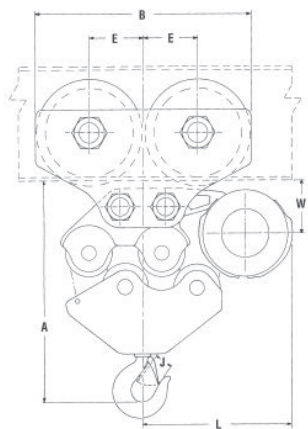
Zephyr Army Type trolley hoist, push & geared, 5000-6000kg



Zephyr Army Type trolley hoist, push & geared, 8000kg



Zephyr Army Type trolley hoist, push & geared, 10000kg







## Zephyr Low Headroom Trolley Hoist



**Capacity 1500 – 24000 kg**

Chester Zephyr Low Headroom trolley hoists, as the name implies are designed for those applications where head room is so limited that no other type hoist can be used. It offers the answer for existing structures with low ceilings and suggests interesting cost savings in new construction by allowing lower ceilings.

The Chester Low Head Room is not adjustable to varying size beams. Each unit is custom-built to fit the size beam specified in the order.

Zephyr Low Head Room hoists are equipped with concentrically machined, cast iron, precision bearing trolley wheels.

Beam size, height, flange width, and curve radius are required for all orders.

### Standard Features

- Equipped with concentrically machined, cast iron, precision bearing trolley wheels.
- Custom built to fit a specific beam and can be built to suite patented tracks, I-Beams, Wide Flange beams or almost any other type of runway
- Incorporates a rugged steel frame, suspension members and covers and uses the heavy duty components common to our Zephyr Hoist product line
- Planetary gear train
- Positive acting Weston Style load brake
- Alloy steel load chain
- Load wheel can be reversed to double its useful life
- The design of the Zephyr Low headroom hoist makes it ideal for customization to meet the specific requirements of most applications.

### Options

- Load limiters
- Chain containers
- Track clamps
- Spark and corrosion resistant features

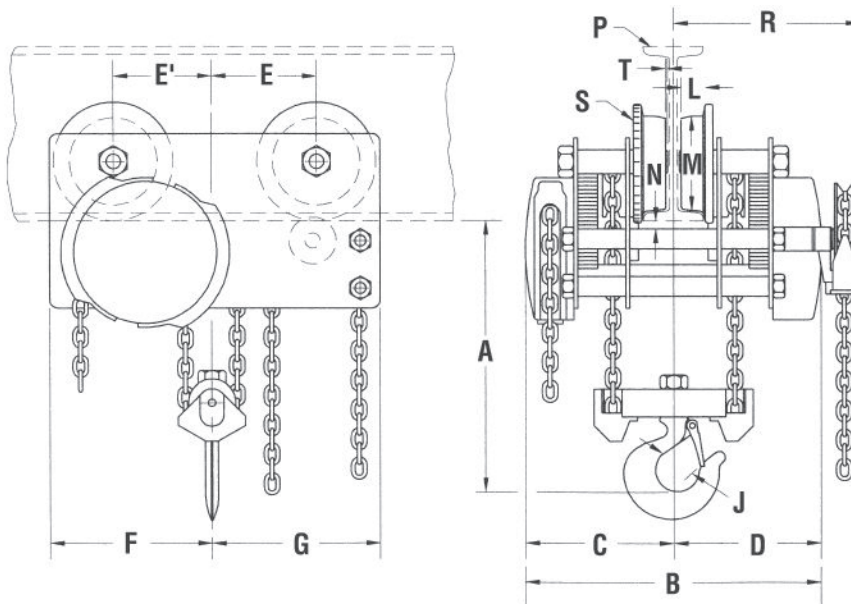
### Specifications model Zephyr low headroom trolley hoist

Model		Capacity kg	Standard lifting height m	Number of chain falls	Beam flange width mm	Chain overhauled to lift load one meter m	Chain pull at WLL daN	Headroom mm	Curve radius min. m	Weight kg	
- Push trolley	- Geared trolley									- P	- G
1421-1 1/2	1422-1 1/2	1500	2.4	1	152	87	18	159	2.0	94	104
1421-2	1422-2	2000	2.4	1	152	87	24	159	2.0	95	106
1421-3	1422-3	3000	2.4	2	203	176	19	187	2.0	138	152
1421-4	1422-4	4000	2.4	2	203	176	25	203	2.3	140	154
1421-5	1422-5	5000	2.4	3	254	165	36	222	2.6	260	287
1421-6	1422-6	6000	2.4	3	254	165	42	222	2.6	260	287
1421-8	1422-8	8000	2.4	4	254	355	29	279	2.9	295	351
1421-10	1422-10	10000	2.4	5	305	330	39	292	3.6	464	501
1421-12	1422-12	12000	2.4	6	305	330	47	292	—	464	501
1421-16	1422-16	16000	2.4	8	381	710	31	346	—	726	762
1421-20	1422-20	20000	2.4	10	457	731.5	39	438	—	885	957
1421-24	1422-24	24000	2.4	12	457	731.5	47	438	—	885	957



## Dimensions model Zephyr low headroom trolley hoist

Model	1 1/2 t & 2 t	3 t	4 t	5 t & 6 t	8 t	10 t & 12 t	16 t	20 t & 24 t
A, mm	159	187	203	222	279	292	346	438
B, mm	518	518	518	667	667	667	772	772
C, mm	259	259	259	333	333	333	386	386
D, mm	259	259	259	333	333	213	386	386
E, mm	130	165	165	187	213	225	302	311
E', mm	130	168	168	187	225	248	302	314
F, mm	222	270	270	305	356	397	473	489
G, mm	210	270	270	305	343	365	473	483
H, mm	16	14	14	23	14	14	14	19
J, mm	29	34	43	43	52	57	76	92
L, mm	29	34	34	36	43	44	51	51
M, mm	114	162	162	183	210	248	298	298
N, mm	13	13	13	14	14	16	19	16
P, mm	86	102	102	117	117	127	140	152
R, mm	332	332	332	419	419	419	479	468
S, mm	152	203	203	229	254	297	343	343



Zephyr low headroom trolley hoist



## Zephyr Swivel Truck Low Headroom Trolley Hoist

**Capacity 250 – 6000 kg**

The Chester Zephyr Swivel Truck Low Headroom Trolley Hoist provides an absolute minimum distance from the bottom of the runway beam to the saddle of the load hook in the fully raised position. This trolley hoist provides true low headroom capabilities.

Our Swivel Truck Low Headroom also incorporates two highly desirable features – compact physical dimensions, and the ability to travel extremely short radius curves. Runways can be located closer to walls than would otherwise be possible, with units of heavier and bulkier construction.

The Swivel Truck is ideal for patented monorail, especially when required for use with switches, turntables and interlocks. For such applications, minimum dimensions are a necessity. Our compact, lightweight, steel swivel truck design offers versatility and adaptability to problem job applications where space savings is essential.

### Options

- Wider flange width
- Load limiters
- Chain containers
- Track clamps
- Spark and corrosion resistant features

### Specifications model Zephyr swivel truck low headroom trolley hoist

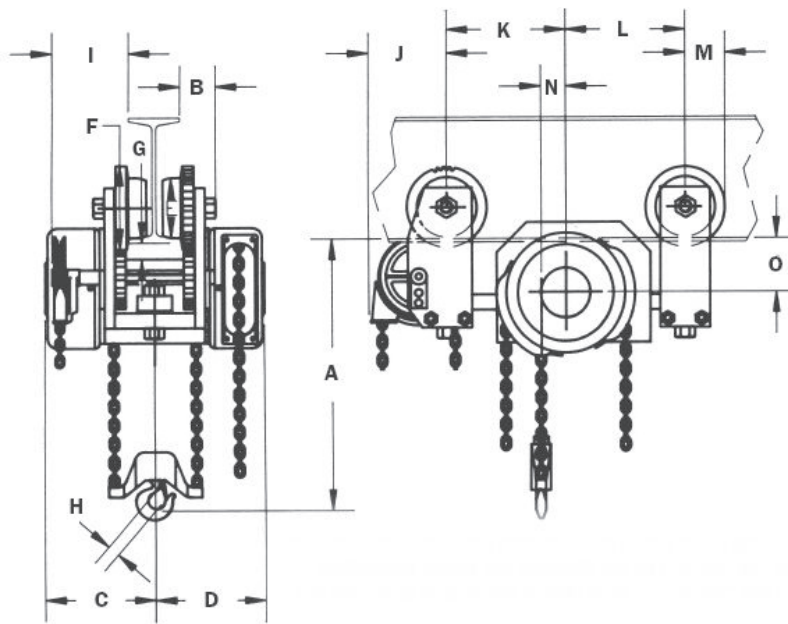
Model		Capacity kg	Standard lifting height m	Number of chain falls	Beam flange width* mm	Chain overhauled to lift load one meter m	Chain pull at WLL daN	Headroom mm	Curve radius min.** mm	Weight kg	
- Push trolley	- Geared trolley									- P	- G
1321-1/4	1322-1/4	250	2.4	1	127	33	8	157	533	58	65
1321-1/2	1322-1/2	500	2.4	1	127	33	16	157	533	58	65
1321-1	1322-1	1000	2.4	1	127	33	32	157	533	58	65
1321-1 1/2	1322-1 1/2	1500	2.4	1	152	66	26	171	762	111	121
1321-2	1322-2	2000	2.4	1	152	66	34	171	762	114	122
1321-3	1322-3	3000	2.4	2	203	170	19	211	1067	156	170
1321-4	1322-4	4000	2.4	2	203	170	26	235	1067	159	172
1321-5	1322-5	5000	2.4	3	254	170	33	252	1219	211	225
1321-6	1322-6	6000	2.4	3	254	170	41	252	1219	211	225

\* Each unit is set for a specified flange width and is not adjustable.

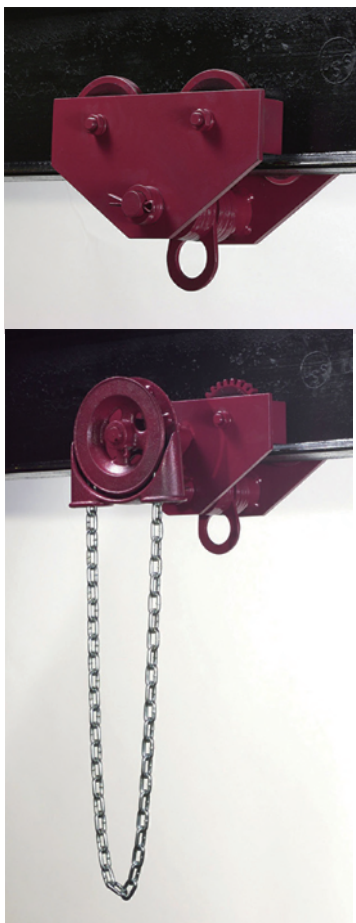
\*\* Curve radius is must always be specified when ordering.

## Dimensions model Zephyr swivel truck low headroom trolley hoist

Model	1/4 t - 1 t	1 1/2 t & 2 t	3 t	4 t	5 t	6 t
A, mm	157	171	210	235	252	252
B, mm	51	56	65	65	71	71
C, mm	167	221	251	251	257	257
D, mm	167	221	251	251	257	257
E, mm	95	114	162	162	183	183
F, mm	127	152	203	203	229	229
G(push), mm	22	16	24	24	22	22
G(g geared), mm	22	16	24	24	22	22
H, mm	25	29	34	43	43	43
I, mm	119	183	206	206	216	216
J, mm	95	159	156	156	176	176
K, mm	184	289	294	294	294	294
L, mm	165	194	195	195	224	224
M, mm	64	76	102	102	114	114
N, mm	35	76	76	76	76	76
O, mm	75	48	87	87	98	98



Zephyr swivel truck low headroom trolley hoist



## PT Push and Geared Trolley



**Capacity 250 – 50000 kg**

### Standard Features

- Lifetime lubricated precision ball bearings, in 1/4 through 3 ton capacity trolleys, assure a minimum of manual effort and also of maintenance.
- In the 4 ton through 25 ton capacities, each trolley is equipped with eight duo-sealed Timken tapered roller bearings that absorb the radial and thrust loads exerted in these heavier sizes, and reduce manual effort and maintenance to a minimum.
- Heavy rolled steel side plates are shaped to give these trolley units stability and rigidity. They extend beyond the wheels to act as bumpers. Steel equalizing pins connect the two halves of each trolley, providing load equalization and smooth operation.
- Trolley wheels are long wearing alloy cast iron. Wheel treads are machined to provide smoothest possible rolling motion. Steel axles are rigidly supported in the side frame. Steel trolley blocks reinforce the side plates as well as the equalizing pin.
- Trolley can be adjusted to fit different beam flange width. Consult factory when special beam request.

### Options

- Spark-resistance feature – add “SR” as suffix to models.

### Specifications model PT

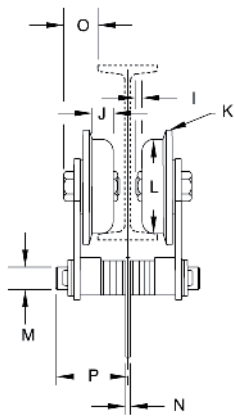
Model		Capacity kg	Minimum beam height mm	Beam flange width mm	Minimum curve radius mm	Net weight kg	
- Push trolley	- Geared trolley					- P	- G
1641-0025	—	250	102	68 - 127	508	10	17
1641-0050	—	500	102	68 - 127	508	10	17
1641-0100	1642-0100	1000	127	76 - 152	610	20	28
1641-0150	1642-0150	1500	127	76 - 152	610	20	29
1641-0200	1642-0200	2000	152	85 - 159	762	30	41
1641-0300	1642-0300	3000	152	85 - 159	762	32	42
1641-0400	1642-0400	4000	203	102 - 178	914	70	83
1641-0500	1642-0500	5000	203	102 - 178	914	73	85
1641-0600	1642-0600	6000	203	102 - 178	914	73	85
1641-0800	1642-0800	8000	254	117 - 203	1524	136	157
1641-1000	1642-1000	10000	254	117 - 203	1524	141	163
1641-1200	1642-1200	12000	254	117 - 203	1524	141	163
1641-1600	1642-1600	16000	305	152 - 203	2438	272	295
1641-2000	1642-2000	20000	305	152 - 203	2438	277	299
1631-2500	1632-2500	25000	457	152 - 203	3048	474	544
1641-3000	1642-3000	30000	610	178 - 203	N.A.	689	733
1641-4000	1642-4000	40000	610	178 - 203	N.A.	806	855
1631-5000	1632-5000	50000	610	178 - 203	N.A.	1214	1284

1/4 through 20 ton units are supplied straight sided with universal wheels for operation on flat or tapered beams. For patented track applications consult factory.

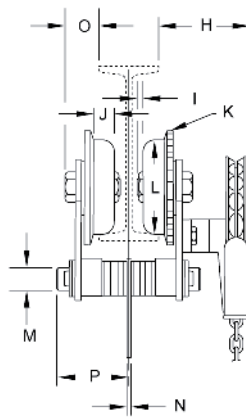
25 and 50 ton units are supplied with canted side plates for operation on standard American tapered I-beams. For other beams consult factory.

## Dimensions model PT

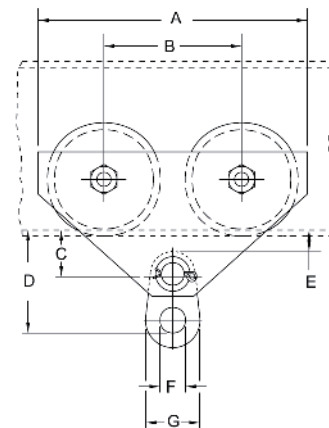
Model	1/4 - 1/2	1	1 1/2	2	3	4	5 - 6	8	10 - 12	16	20	25
A, mm	292	337	337	397	397	476	476	600	600	711	711	718
B, mm	152	171	171	194	194	216	216	270	270	305	305	356
C, mm	48	57	57	67	67	83	83	98	98	121	121	149
D, mm	124	137	143	171	175	213	219	270	283	349	425	425
E, mm	22	25	25	29	29	32	32	35	35	37	37	54
F, mm	44	44	51	54	57	70	76	89	114	102	114	102
G, mm	70	76	83	92	102	121	140	165	203	229	254	254
H, mm	152	156	156	156	156	206	206	229	229	271	271	368
I, mm	0	0	0	0	0	3	3	3	3	6	6	8
J, mm	22	29	29	29	29	35	35	43	43	44	44	51
K, mm	102	127	127	152	152	203	203	254	254	297	297	343
L, mm	73	95	95	114	114	162	162	210	210	248	248	298
M, mm	25	32	32	38	38	51	51	64	64	83	83	83
N, mm	6	6	10	10	13	16	16	19	25	32	32	44
O, mm	51	44	44	54	54	67	67	83	83	117	117	178
P, mm	105	121	121	133	133	156	156	175	175	194	194	210



PT push trolley



PT geared trolley



# ORDERING INFORMATION

To make your order placement fast, accurate and easy, please have all of the specification information prepared that is prepared in the chart below.

### Hand Chain Hoists

Model: \_\_\_\_\_

Capacity: \_\_\_\_\_ kg      Hand chain drop: \_\_\_\_\_ m

Lift: \_\_\_\_\_ m      **NOTE:** Hand chain drop is normally 0.5m less than lift.

Overload prevention device       Stainless steel load and hand chains  
 Chain container       Corrosion resistant version  
 Explosion proof version/Spark-resistant version


### Trolley Hoists

Model: \_\_\_\_\_

Capacity: \_\_\_\_\_ kg      Lift: \_\_\_\_\_ m      Hand chain drop: \_\_\_\_\_ m

Beam flange width: \_\_\_\_\_ mm      **NOTE:** Hand chain drop is normally 0.5m less than lift.

Minimum curve radius: \_\_\_\_\_ mm



Trolley type:       Push trolley       Geared trolley

Others:

Overload prevention device       Stainless steel load and hand chains       Chain container  
 Beam locking device       Rubber buffers  
 Corrosion resistant version       Explosion proof version/Spark-resistant version

### Ratchet Lever Hoists

Model: \_\_\_\_\_

Capacity: \_\_\_\_\_ kg      Lift: \_\_\_\_\_ m

Overload prevention device       Stainless steel load chain       Sling chain       Explosion proof version


### Trolleys

Model: \_\_\_\_\_

Capacity: \_\_\_\_\_ kg

Beam flange width: \_\_\_\_\_ mm

Minimum curve radius: \_\_\_\_\_ mm



Trolley type:       Push trolley       Geared trolley

Others:

Beam locking device       Rubber buffers  
 Corrosion resistant version       Explosion proof version/Spark-resistant version





**Singapore/Malaysia/Indonesia/Vietnam/Brunei/Philippines/Australia**

**Columbus McKinnon Asia Pacific Pte Ltd**

No.2, Jurong East Street 21, #04-31J,  
IMM Building, Singapore 609601.  
Email: inquiryasia@cmworks.com

**Thailand**

**Yale Industrial Products Asia (Thailand) Co., Ltd.**

BB Building Room 1510, 15th Floor, 54 Asoke Road, Klongtannua,  
Wattana, Bangkok 10110, Thailand  
Email: inquiryasia@cmworks.com

**India**

**Columbus McKinnon Corporation India Office**

Flat No. 101b, Heerabai Niwas  
Behind Symantec, Baner  
Pune 411045 India  
Email: inquiryasia@cmworks.com

[www.cmworks.com](http://www.cmworks.com)

Please contact our authorized distributor.

