



# Korean International School

---

## YEAR 10 & 11 Curriculum

2021 – 2023

A Guide to your Subject Options



# Contents

Message from the Principal & Head of Secondary	3
Core Values and Aims	4
Advice for Selecting Subjects	5-6
Head of Department Contact Emails	7
IGCSE Curriculum Overview including ICE	8-9
Subject Pages	10-32
<ul style="list-style-type: none"><li>• First Language English</li><li>• English as a Second Language</li><li>• Chinese – First Language</li><li>• Chinese – Second Language</li><li>• Chinese (Mandarin) – Foreign Language</li><li>• Spanish – Foreign Language</li><li>• Mathematics (Without Coursework)</li><li>• Biology</li><li>• Chemistry</li><li>• Physics</li><li>• Psychology (GCSE)</li><li>• Geography</li><li>• History</li><li>• Travel &amp; Tourism</li><li>• Art and Design</li><li>• Economics</li><li>• Business Studies</li><li>• Computer Science</li><li>• Media Studies (GCSE)</li><li>• Music</li><li>• Drama</li><li>• Sport (BTEC)</li></ul>	
Proposed Subject Timetable & Subject Selection Link	33

# Message from the Principal & Head of Secondary

---

This guide is designed to provide you with information regarding the options selection for students entering Year 10 in 2021.

The process of choosing subjects can appear daunting in the first instance but by taking the time to read the included information and seeking advice from teachers, we are sure you will find it a smooth one.

The school aims underpin the development of our curriculum and as such, students can expect to be pushed to reach their potential in an environment that supports their holistic development. As well as the optional courses, all students will study a core group of subjects that ensure a well-rounded programme.

When selecting the options students should consider the subjects they are passionate about studying, their personal strengths and weaknesses, along with areas they may be interested in pursuing in their senior school years and beyond. Choosing subjects based on what friends are studying or which teachers they like represents poor rationale. As always, pastoral and teaching staff will make themselves available to support students as they make their subject selection.

Students entering Year 10 in 2021 will study the core subjects below:

- English
- Mathematics
- Science (at least one chosen from Biology, Chemistry & Physics)
- Chinese or Spanish
- Humanities (elective)

This year we are pleased to be able to provide extra support in English. All Year 10 students will take FCE (First Certificate in English) classes within their timetable to supplement and support their English writing skills. FCE is a Cambridge exam which is taken externally.

We are also excited to add a new program - BTEC Sports (Level 2) to our choices. This qualification is equivalent to one IGCSE.

Career Guidance and PE are also studied as non-examinable subjects. At this level the focus for PE is to encourage a healthy, balanced lifestyle and Career Guidance will assist the students with their plans for the future.

We look forward to working with all of you throughout this process. Good luck!

**Maisie Chan**  
**Head of Secondary School**

**Christopher Chadwick**  
**Principal**

# KIS School Mission Statement

Find passion. Foster vision. Encourage action

---

## Our Core Values:

- To ensure a supportive, happy and secure environment for learning.
- We show care, kindness and compassion to others.
- We are supportive of each other.
- We respect the needs and rights of each member of our community.
- We embrace diversity and celebrate individuality.
- We are responsible and honest in our actions.

## Our Aims:

- To create an effective, caring and supportive learning environment.
- To provide students with the qualifications and 'approaches to learning' necessary to access tertiary education and future careers.
- To provide challenges and opportunities to succeed for all students in order to create high expectations of behaviour and involvement.
- To develop a sense of social responsibility and participation in the international community.
- To foster self-discipline, leadership, respect for others and the ability to work independently.
- To provide an ethos of continual improvement and lifelong learning
- To promote a culture of excellence in teaching and learning.
- To provide an individualised and personalised approach to learning together with small class sizes and flexible teaching methods.
- To develop leadership skills and a sense of service to others through a range of extracurricular opportunities locally and internationally.
- To use innovative pedagogy and technology to enrich learning. To work in partnership with parents, and the local and wider community in the ongoing development of the school.
- To foster a learning community where every student, teacher, staff member, parent has an ongoing passion for learning.

# Advice for Selecting Subjects

---

**Dear Year 9 Students,**

Welcome to the IGCSE Options process. This is the beginning of an important time in your educational journey. It is the first time that you are able to make choices about the subjects that you would like to study.

The decisions that you are making now will have a large impact on your A Level studies in the future and eventually your university choices. You will need to think carefully about what courses you will like to study. As you make your decisions, think about these questions:

- What subjects interest you?
- What are you good at?
- What are you not so good at?
- What do you think you would like to do as a career?

It is very important that you talk to your parents and teachers to discuss the choices you are considering. Talk to the current Year 10 and Year 11 students to get an idea of the expectations and their experiences of the subjects you are interested in. Take time to research different careers. Friends are very important, but be careful not to choose courses just because your friends are. This is your journey and an important one.

## **Reasons for selecting a subject**

When you finally choose, please bear the following in mind:

**SELECT** a subject because:

- You will enjoy it
- You have a strong interest in it
- You are good at it
- It will help you in your future career aspirations and plans
- You believe that you will succeed in it

**DO NOT SELECT** a subject because:

- Your friends have chosen it
- You think it will be easy
- You have been told it involves less work
- Relatives or friends tell you to do it without a good reason
- You just like the teacher



# Advice for Selecting Subjects

---

Universities are looking for students that have a broad and balanced curriculum and that will help you no matter what your path becomes.

As a student in Upper Secondary, you will become senior members of our school. Therefore, it is important that you consider yourselves mature students, model positive behaviour, and an outstanding attitude towards learning.

Please think very carefully about all of the information and advice that you are being given and do not be afraid to ask about anything you need further help with. We want to help you make the best possible decisions so that you can achieve your potential in your studies.

For more advice:

[Making Subject Choices for Year 10](#)

[Career Pilot - Choosing your IGCSEs](#)

[Bitesize - Everything you need to know about choosing your GCSE options](#)

[How Important are GCSEs when it comes to University?](#)

# Subject Departments

---

If you have any questions regarding the subjects on offer, please contact the Lead Teachers for assistance.

Head of Secondary	Ms. M. Chan	machan@kis.edu.hk
Deputy Head	Mr. J. Green	jgreen@kis.edu.hk
Deputy Head	Mr. R. Williams	rwilliams@kis.edu.hk
Examinations Officer	Mr. C. Johnstone	cjohnstone@kis.edu.hk
<b>Subject</b>	<b>Teacher Name</b>	<b>Contact Email</b>
English	Ms. V. Srivastava	vsrivastava@kis.edu.hk
ESL	Mr. H. Reddy	hreddy@kis.edu.hk
Mathematics	Mr. A. Rugoobur	arugoobur@kis.edu.hk
Science	Ms. C. Woodburn	cwoodburn@kis.edu.hk
Social Studies	Ms. G. Aravind	garavind@kis.edu.hk
Chinese	Ms. A. Wang	awang@kis.edu.hk
Foreign Languages	Mr. C. Padrosa	cpadrosa@kis.edu.hk
Art & Design	Ms. E. Bell-Scott	ebellscott@kis.edu.hk
Computer Science	Ms. K. Suresh	sukavitha@kis.edu.hk
Media Studies	Mr. J. Warburton	jwarburton@kis.edu.hk
Commerce	Mr. M. Drew	mdrew@kis.edu.hk
Music	Mr. M. Shum	mshum@kis.edu.hk
Drama	Mr. M. Steenkamp	msteenkamp@kis.edu.hk
Sport (BTEC)	Mr. L. Leader	lleader@kis.edu.hk

# IGCSE Curriculum Overview

---

IGCSE (International General Certificate of Education) is a two-year course that will be assessed in May/June 2023. We are affiliated with, and accredited by three examining boards:

- **Cambridge International Examinations** - <https://www.cambridgeinternational.org/>
- **AQA (Assessment & Qualifications Alliance)** - <https://www.aqa.org.uk/>
- **Pearson BTEC programme** - <https://qualifications.pearson.com/en/about-us/qualification-brands/btec.html>

The BTEC (Business and Technology Education Council) programme is a new course that is equivalent to one GCSE.

BTECs are high quality, hands-on qualifications grounded in the real world of work. BTECs are all about learning by doing and that means BTEC students put what they learn into practice straight away. Throughout the course, they work on a series of assignments set in real-life scenarios, developing the practical knowledge and skills employers and universities are looking for.

The options choices at KIS have been designed to provide all students with a broad range of choices that will enable them to enter post-16 study. There are four compulsory areas:

- English
- Mathematics
- Science – Students are required to study at least ONE core science: Biology, Chemistry or Physics
- Language – Chinese or Spanish

KIS will determine the appropriate English and Mathematics course of each student based on Year 9 term grades and Checkpoint results. The Chinese Department will determine the appropriate Chinese course.

**Students will need to select FIVE options including ONE Science and ONE Language, so they have a total of eight subjects.**



## Cambridge ICE curriculum

Cambridge ICE is a group award for Cambridge IGCSE, and is very popular in the USA and South America.

It allows schools to offer a broad and balanced curriculum by recognising the achievements of learners who pass examinations in at least seven Cambridge IGCSE subjects from five different subject groups, including two different languages.

The Cambridge IGCSE subjects are grouped into five curriculum areas:

- Group I: Languages
- Group II: Humanities and Social Sciences
- Group III: Sciences
- Group IV: Mathematics
- Group V: Creative and Professional

Learners must take two different languages from Group I, and one subject from each of Groups II, III, IV and V. The seventh subject can be taken from any of the five subject groups.

## Timetabling of Subjects

We will try our very best to provide students with their preferred options, but this may not always be possible. If there is limited interest in an option then the subject may be withdrawn. It is important that you submit your Subject Selection form as soon as possible. The Subject Selection Google Form link will be emailed to you at **9am on 10<sup>th</sup> February, 2021**. The final deadline for the submission of your choices is **Friday 26<sup>th</sup> February, 2021**.

At KIS, we understand that some students may decide that the course they are in does not suit them. Students will have until **Friday, 10<sup>th</sup> September, 2021** to change their subjects. **After this date, no changes in the subject options will be permitted.**

## Examination Fees

Exams in all subjects are compulsory in Year 11. Parents and guardians are responsible for paying the examinations fees for their child. These fees are **not included** in the normal school fees. Examination fees are invoiced in January.

# First Language English

Group I - Course Code: 0500

KIS determines the appropriate English course.

## Course Description:

Cambridge IGCSE First Language Course is designed for students who have a level in **English equivalent to First Language Competence**.

English Language is crucial in the process of communicating accurately, appropriately and effectively in speech and writing. This course is structured to enable students to understand and respond appropriately to what they hear, read and experience. They learn how to employ a wide-ranging vocabulary, use correct grammar, spelling, punctuation, and develop personal style and awareness of the audience being addressed. Additionally, the course will stimulate personal development and an understanding of self and others, whilst concurrently complementing other areas of study through the development of the skills of analysis, synthesis and drawing of inference. Students' imaginative, creative and personal responses are an integral part of the course.

**Assessment:** First Language English is examined through 1 compulsory paper and Coursework.

**All Candidates must take two components – Paper 2 and Coursework Portfolio.**

<b>Paper 2-Reading - 50%</b>	<b>Coursework Portfolio – 50%</b>
<b>2 hours</b> <b>80 marks</b>  Structured and extended writing questions. Questions will be based on three reading texts.  This component is set and marked by Cambridge.	<b>80 marks</b>  Candidates submit a portfolio of three extended writing assignments, each of about 500-800 words.  Internally assessed and externally moderated.

## **Grading and reporting**

Grades A\*, A, B, C, D, E, F or G indicate the standard a candidate achieved at Cambridge IGCSE. A\* is the highest and G is the lowest.

**Careers:** English is the key to professional and personal success in an increasingly competitive global market. In order to gain entry to colleges and universities world worldwide and progress onwards in such esteemed professions as law, business, education, medicine and the new media technologies. Grade C in IGCSE English as a First Language satisfies the English proficiency requirements of many universities in the UK and other Anglophone countries.



# First Language Chinese

Group I - Course Code: 0509

KIS determines the appropriate Chinese course.

Cambridge IGCSE First Language Chinese is designed for learners whose mother tongue is Chinese. The course allows learners to:

- develop the ability to communicate clearly, accurately and effectively when writing
- learn how to use a wide range of vocabulary and correct grammar, character formation and punctuation
- develop a personal style and an awareness of the audience being addressed.

Learners are also encouraged to read widely, including classical texts, both for their own enjoyment and to further their awareness of the ways in which Chinese can be used. Cambridge IGCSE First Language Chinese also develops more general analysis and communication skills such as synthesis, inference and the ability to order facts and present opinions effectively.

## Assessment overview

All candidates take two papers.

<b>Paper 1</b> <b>Reading, Directed Writing and Classical Chinese</b> <b>2 hours 15 minutes</b> <b>50%</b>	<b>Paper 2</b> <b>Writing</b> <b>2 hours</b> <b>50%</b>
60 marks Questions will be based on syllabus content Externally assessed	50 marks Questions will be based on syllabus content Externally assessed
Section 1 Comprehension and Use of Language (23 marks) Section 2 Directed Writing (25 marks) Section 3 Classical Chinese (12 marks)	Section 1 Argumentative/Discursive Writing (25 marks) Section 2 Descriptive/Narrative Writing (25 marks)

# Chinese - Second Language

## Group I - Course Code: 0523

**KIS determines the appropriate Chinese course.**

Cambridge IGCSE Chinese as a Second Language offers learners the opportunity to develop practical communication skills in listening, speaking, reading and writing.

Learners will be presented with a variety of stimuli that will build up their skills in reading and writing. They will learn to select relevant details, understand the difference between what is directly stated and implied, and practise writing for different purposes and audiences. Learners will listen to a range of spoken material, including talks and conversations, in order to develop listening skills. In both written and spoken Chinese, learners will be able to respond to information as well as abstract ideas. Learners will engage in conversations on a variety of topics, and develop their skills in expressing their viewpoints with a degree of accuracy and clarity.

Texts and questions are printed in both traditional and simplified characters on the question papers. Candidates choose the form they prefer in the examination and may write their answers in either traditional or simplified characters.

The Speaking test is assessed in Mandarin Chinese only.

### Assessment overview

All candidates take three components. The reading passages and questions are printed in both traditional and simplified characters on the question papers. Candidates may write their answers in either traditional or simplified characters.

<b>Paper 1 Reading and writing 2 hours 60% 60 marks</b>	<b>Paper 2 Listening 30-45 minutes 20% 30 marks</b>	<b>Component 3 Speaking 10-13 minutes 20% 60 marks</b>
Written examination consisting of five exercises that test a range of reading and writing skills. Types of task include: information transfer, short-answer questions, multiple-matching, functional writing and extended writing. Externally assessed	Written examination consisting of four exercises that test listening skills. Candidates listen to recordings of short and longer spoken texts. Types of task include: short-answer questions, gap-fill sentences, information correction and multiple-choice questions. All listening material is recorded in Mandarin Chinese. Externally assessed	The Speaking test is conducted in Mandarin Chinese. The Speaking test consists of three parts: candidates give a two- to three-minute presentation, followed by a short discussion with the examiner about the presentation, followed by a short conversation with the examiner about general topics. Internally assessed and externally moderated

# Chinese (Mandarin) – Foreign Language

Group I - Course Code: 0547

KIS determines the appropriate Chinese course.

The Cambridge IGCSE Mandarin is designed for candidates who are learning Mandarin Chinese as a foreign language. The course is based on the linked language skills of listening, reading, speaking and writing, and these are built on as learner's progress through their studies.

## The IGCSE syllabus covers the following topics:

1. Everyday activities: home life and school; food, health and fitness.
2. Personal and social life: self, family and personal relationships; holidays.
3. The world around us: hometown and local area; natural and made environment; people, places and customs.
4. The world of work: continuing education; careers and employment.
5. The international world: tourism at home and abroad; life in other countries.

## Assessment Details

All candidates take the following four components:

Grades available: A*, A, B, C, D, E, F, G	Weighting of papers
<b>Paper 1 Listening</b> approximately 35 minutes Candidates listen to a number of recordings and answer questions testing comprehension. 30 marks Externally assessed	25%
<b>Paper 2 Reading</b> 1 hour 15 minutes Candidates read a number of texts and answer questions testing comprehension. 36 marks Externally assessed	25%
<b>Paper 3 Speaking*</b> approximately 15 minutes Candidates complete two role-plays, a topic presentation/conversation and a general conversation. 100 marks Internally assessed/externally moderated	25%
<b>Paper 4 Writing</b> 1 hour 15 minutes Candidates respond in the target language to three tasks. 45 marks Externally assessed	25%

# Spanish – Foreign Language

Group I - Course Code: 0530

## Course overview

This course is designed for students who are learning Spanish as a foreign language. The aim is to develop an ability to use the language effectively for practical communication. The course is built around the listening, reading, speaking and writing skills. These are built on as learner's progress through their studies.

## Syllabus content

The subject content is organised into five broad Topic areas which provide contexts for the acquisition of vocabulary and the study of grammar and structures. Through the study of these Topic areas, candidates gain insight into target language countries and communities as they develop a wider range of practical use in the Spanish language. The Topic areas are:

## Topics

- A. Everyday activities
- B. Personal and social life
- C. The world around us
- D. The world of work
- E. The international world

## Assessment Details

All candidates take the following four components:

Grades available: A*, A, B, C, D, E, F, G		Weighting of papers
<b>Paper 1 Listening</b> Candidates listen to a number of recordings and answer questions testing comprehension. 40 marks	approximately 35 minutes Externally assessed	25%
<b>Paper 2 Reading</b> Candidates read a number of texts and answer questions testing comprehension. 45 marks	1 hour 15 minutes Externally assessed	25%
<b>Paper 3 Speaking*</b> Candidates complete two role-plays, a topic presentation/conversation and a general conversation. 40 marks	approximately 15 minutes Internally assessed/externally moderated	25%
<b>Paper 4 Writing</b> Candidates respond in the target language to three tasks. 45 marks	1 hour 15 minutes Externally assessed	25%

# Mathematics

Group IV - Course Code: 0580

KIS determines the appropriate Mathematics course.

## Introduction

IGCSE Mathematics builds on the Cambridge Secondary topics covered in Years 7-9. Students will be given regular tests and quizzes, homework and classwork to monitor their progress. These results will be used to calculate their term grade. The student's final grade is determined through an external exam.

Group 2 may follow the Core curriculum and Group 1 may follow the Extended curriculum. Candidates aiming for grades A\* to C should follow the Extended curriculum.

**Resources:** The following textbook will be used for both Year 10 and 11.

**Extended Mathematics for IGCSE**, D. Rayner, Oxford. 5<sup>th</sup> Edition.

## Content

All candidates will study the following topics in Year 10 and Year 11.

1. Number
2. Algebra and graphs
3. Geometry
4. Mensuration
5. Co-ordinate geometry
6. Trigonometry
7. Matrices and transformations
8. Probability
9. Statistics

## Assessment

Students studying the core curriculum will be assessed by Paper 1 and 3.

Students studying the extended syllabus will be assessed by Paper 2 and 4.

**Paper 1 (Core) 1 hour:** Short-answer questions based on the Core curriculum. 56 marks. Externally marked. Weight = 35%

**Paper 2 (Extended) 1 hour 30 minutes:** Short-answer questions based on the Extended curriculum. 70 marks. Externally marked. Weight = 35%

**Paper 3 (Core) 2 hours:** Structured questions based on the Core curriculum. 104 marks. Externally marked. Weight = 65%

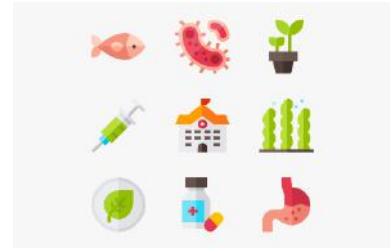
**Paper 4 (Extended) 2 hours 30 minutes:** Structured questions based on the Extended curriculum. 130 marks. Externally marked. Weight = 65%

- Candidates should have an electronic calculator for all papers. Algebraic or graphical calculators are not permitted. Three significant figures will be required in answers except where otherwise stated.



# Biology

Group III - Course Code: 0610



## Overview:

Biology IGCSE 0610 is an exciting two-year course which gives you the opportunity to study life and the organisms around us. Over the two years, you will consider how organisms interact with one another and with their environment and you will learn about the practical aspects of Biology in the process. These topics help to build a solid foundation of understanding and offer an excellent pathway to studying Biology at a higher level.

The topics prescribed for the subject are outlined on the University of Cambridge International Examinations website. The Biology syllabus, which contains specific standards and skills, can be downloaded from the Cambridge website.

## Requirements for IGCSE Biology:

Candidates should have good verbal English Skills and very-good-to-excellent reading comprehension skills.

## Who should take IGCSE Biology?

Those who are considering a future in Medicine, Ecology, Veterinary Science, Genetics, Research or even if you have a passion for the living world around you.

## Assessment

At the end of Year 11, Candidates will sit three papers covering the material from Year 10 and Year 11 Biology. Candidates will have the option of taking the Core or Extended Assessments.

## Core Candidates:

Paper 1: 45 minute multiple-choice paper consisting of 40 questions. This paper is worth 30%.

Paper 3: 1 hour 15 minute written paper of short answer and structured questions. This paper is worth 50%.

Paper 6: 1 hour written paper to assess laboratory skills knowledge. This paper is worth 20%.

Core Candidates may earn a mark ranging from C to G.

## Extended Candidates:

Paper 2: 45 minute multiple-choice paper consisting of 40 questions. This paper is worth 30%.

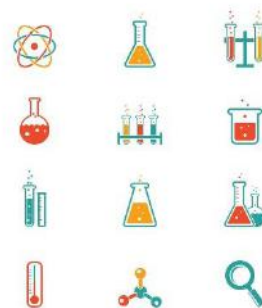
Paper 4: 1 hour 15 minute written paper of short answer and structured questions. This paper is worth 50%.

Paper 6: 1 hour written paper to assess laboratory skills knowledge. This paper is worth 20%.

Extended Candidates may earn a mark ranging from A\* to G.

# Chemistry

## Group III - Course code: 0620



### Overview:

Chemistry IGCSE 0620 is an exciting two-year course which gives you the opportunity to study matter, its properties and its behaviour. Over the two years, you will consider the transformations that substances undergo and the energy changes that occur during these processes. You will also develop practical skills as part of the course.

The topics prescribed for the subject are outlined on the University of Cambridge International Examinations website. The Chemistry syllabus, which contains specific standards and skills, can be downloaded from the Cambridge website.

### Requirements for IGCSE Chemistry:

Candidates should have good verbal English Skills and very-good-to-excellent reading comprehension skills. Candidates should have good math skills and be able to manipulate maths equations to solve for missing variables.

### Who should take IGCSE Chemistry?

Those who are considering a future in engineering, medicine, scientific research or technology-related fields.

### Assessment

At the end of year 11 candidates will sit three papers covering the material from year 10 and year 11 Chemistry. Candidates will have the option of taking the Core or Extended Assessments.

### Core Candidates:

Paper 1: 45 minute multiple-choice paper consisting of 40 questions. This paper is worth 30%

Paper 3: 1 hour 15 minute written paper of structured questions. This paper is worth 50%.

Paper 6: 1 hour written paper to assess laboratory skills knowledge. This paper is worth 20%.

Core candidates may earn a mark ranging from C to G.

### Extended Candidates:

Paper 2: 45 minute multiple-choice paper consisting of 40 questions. This paper is worth 30%

Paper 4: 1 hour 15 minute written paper of structured questions. This paper is worth 50%.

Paper 6: 1 hour written paper to assess laboratory skills knowledge. This paper is worth 20%.

Extended Candidates may earn a mark ranging from A\* to G.

# Physics

Group III - Course Code: 0625



## Overview:

Physics IGCSE 0625 is an exciting two-year course, which gives you the opportunity to study the mechanics of the world around you and to explore why things happen the way that they do. As you develop your investigative skills, you will consider how energy, forces and matter affect the world around you.

The topics prescribed for the subject are outlined on the University of Cambridge International Examinations website. The Physics Syllabus, which contains specific standards and skills, can be downloaded from the Cambridge website.

## Requirements for IGCSE Physics:

Candidates should have good verbal English Skills and very-good-to-excellent reading comprehension skills. Candidates should have good math skills and be able to manipulate maths equations to solve for missing variables.

## Who should take IGCSE Physics?

Those who are considering a future in engineering, scientific research or technology-related fields. Physics is also a logic driven subject and it gives an excellent understanding of how to solve problems methodically.

## Assessment

At the end of Year 11, candidates will sit three papers covering the material from Year 10 and Year 11 Physics. Candidates will have the option of taking the Core or Extended Assessments.

## Core Candidates:

Paper 1: 45 minute multiple-choice paper consisting of 40 questions. This paper is worth 30%

Paper 3: 1 hour 15 minute written paper of short answer and structured questions. This paper is worth 50%.

Paper 6: 1 hour written paper to assess laboratory skills knowledge. This paper is worth 20%.

Core Candidates may earn a mark ranging from C to G.

## Extended Candidates:

Paper 2: 45 minute multiple-choice paper consisting of 40 questions. This paper is worth 30%

Paper 4: 1 hour 15 minute written paper of short answer and structured questions. This paper is worth 50%.

Paper 6: 1 hour written paper to assess laboratory skills knowledge. This paper is worth 20%.

Extended Candidates may earn a mark ranging from A\* to G.



# Psychology

(AQA GCSE) Course Code: 8182

AQA GCSE Psychology provides an engaging and effective introduction to the fundamentals of psychology. During this two-year course students will develop critical analysis, independent thinking and research skills. The content is structured around two main topic areas:

- A) Cognition and behaviour: memory, perception, development and research methods.
- B) Social context and behaviour: social influence, language, thought and communication, brain and neuropsychology and psychological problems.

During the lessons students will learn how to think and conduct research like a psychologist. They will set up experiments in the school to find out more about the thoughts, feelings and behaviour of their peers, and will gain a deeper understanding of their own psyche.

## Requirements for GCSE Psychology:

Candidates should have good verbal English Skills and very-good-to-excellent reading comprehension skills.

## Who should take IGCSE Psychology?

Those who are looking at a career in counselling, education, medicine or similar alongside those who are interested in unravelling the mysteries of the human mind, would like to learn how to conduct research in Social Sciences, and are eager to develop transferable skills that help them become more effective learners and communicators.

## Assessment

All candidates take two papers.

<b>Paper 1: Cognition and behaviour</b>	<b>Paper 2: Social context and behaviour</b>
<b>How it's assessed</b> <ul style="list-style-type: none"> <li>• Written exam: 1 hour 45 minutes</li> <li>• 100 marks</li> <li>• 50% of GCSE</li> </ul>	<b>How it's assessed</b> <ul style="list-style-type: none"> <li>• Written exam: 1 hour 45 minutes</li> <li>• 100 marks</li> <li>• 50% of GCSE</li> </ul>
<b>Questions</b> <ul style="list-style-type: none"> <li>• Section A: multiple choice, short answer and extended writing (25 marks)</li> <li>• Section B: multiple choice, short answer and extended writing (25 marks)</li> <li>• Section C: multiple choice, short answer and extended writing (25 marks)</li> <li>• Section D: multiple choice, short answer and extended writing (25 marks)</li> </ul>	<b>Questions</b> <ul style="list-style-type: none"> <li>• Section A: multiple choice, short answer and extended writing (25 marks)</li> <li>• Section B: multiple choice, short answer and extended writing (25 marks)</li> <li>• Section C: multiple choice, short answer and extended writing (25 marks)</li> <li>• Section D: multiple choice, short answer and extended writing (25 marks)</li> </ul>

# Geography

Group II - Course Code: 0460

## Introduction:

Cambridge IGCSE Geography course is based upon the study of both the Physical and Human world around us. It aims to encourage growth of knowledgeable global citizens. The content is studied through the use of case studies many of which are locally (HK) and regionally (Asia) based. The course is structured through three themes: **1. Population and Settlement, 2. The Natural World, 3. Industry, Resources and the Environment.**



## The students will gain:

- Understanding of location on a local, regional and global scale.
- Awareness of the characteristics, distribution and processes affecting contrasting physical and human environments.
- Understanding of the ways in which people interact with each other and with their environment.
- Awareness of the contrasting opportunities and constraints presented by different environments.
- Appreciation of the earth including its people, places, landscapes, natural processes and phenomena, as well as the environment.

## Topics

- |                                   |                             |
|-----------------------------------|-----------------------------|
| 1. Population                     | 7. Rainforests and Deserts  |
| 2. Migration                      | 8. Agriculture              |
| 3. Settlement                     | 9. Industry                 |
| 4. Earthquakes and Volcanoes      | 10. Energy and Water        |
| 5. Rivers                         | 11. Mapping Skills          |
| 6. Marine Processes and Landforms | 12. Research Investigations |

## Assessment

Paper 1	Paper 2	Paper 4
Geographical Themes: Candidates answer three questions, each worth 25 marks. Includes a range of short answer, paragraph and case study questions.	Geographical Skills: Using a 50000:1 map and photographic sources, complete all set questions based on navigation, land usage and graphing skills.	Alternative to Coursework: Using the included resources complete the research investigation based around a human and a natural case study.
1 hour 45 minutes	1 hour 30 minutes	1 hour 30 minutes
45% of total grade	27.5% of total grade	27.5% of total grade

# History

## Group II - Course Code: 0470

### Introduction:

Cambridge IGCSE History course looks at some of the major international events of the twentieth century, as well as covering the history of particular regions, Russia and the United States, in more depth. It develops both historical knowledge and the skills required for historical research.

The course helps students develop an understanding of the nature of cause and effect, continuity and change, similarity and difference and find out how to use and understand historical evidence as part of students' studies.



### The students will gain:

- Interest in and enthusiasm for learning about the past
- Knowledge and understanding of individuals, people and societies in the past
- Understanding of the nature and use of historical evidence
- Understanding of key historical concepts: cause and consequence, change and continuity, and similarity and differences
- A sound basis for further study and the pursuit of personal interest
- International understanding
- Development of historical skills, including investigation, analysis, evaluation and communication skills.

### Content Overview

#### Core Content – Key Questions

- Were the peace treaties of 1919–23 fair?
- To what extent was the League of Nations a success?
- Why had international peace collapsed by 1939?
- Who was to blame for the Cold War?
- How effectively did the United States contain the spread of Communism?
- How secure was the USSR's control over Eastern Europe, 1948–c.1989?
- Why did events in the Gulf matter, c.1970–2000?

#### Depth Studies

- Russia, 1905–41
- The United States, 1919–41

### Assessment

Paper 1	Paper 2	Paper 4
<p>Written Paper:</p> <p>Answer two questions of the four questions that are provided.</p> <p>Write a structured essay on one of the questions based on the Depth Studies.</p>	<p>Written Paper:</p> <p>Answer six questions on the core content using the included source content provided.</p>	<p>Alternative to Coursework:</p> <p>Answer one question based on the Depth Studies.</p>
2 hours	2 hours	1 hour
40% of total grade	33% of total grade	27% of total grade

# Travel & Tourism

Group II - Course Code: 0471

## Introduction:

Cambridge IGCSE Travel and Tourism designed to help meet the need for skilled and knowledgeable individuals in this rapidly diversifying industry. The syllabus develops practical skills across a range of working roles, as well as providing a global and local perspective on travel and tourism.

If you enjoy travelling or wish to be involved in the tourism industry, this course will interest you.



## The students will gain:

- Understanding of the travel and tourism industry
- Theoretical knowledge of the industry and related sectors, including knowledge of travel and tourism products and services, the infrastructure on which they depend and the transport system needed to operate them
- Practical ability in a range of skills and procedures related to working in the travel and tourism industry, including knowledge of the essential personal and professional skills required by individuals working in the service sector
- Critical awareness of the physical, social and economic environments in which travel and tourism takes place, including understanding of the global, regional and local perspectives of travel and tourism.

## Topics

1. The Travel & Tourism Industry
2. Features of Worldwide Destinations
3. Customer Care and Working Procedure
4. Travel & Tourism Products and Services
5. Marketing and Promotion
6. The Marketing and Promotion of Visitor Services

## Assessment

Paper 1	Paper 2
Core Paper: Four scenario-based questions which candidates provide short answers to. The scenarios are set in an international travel and tourism environment, with some local examples.	Alternative to Coursework: This question paper has four scenario-based questions, which require candidates to provide short answers. It is based primarily on Unit 5, marketing and promotion.
2 hours	2 hours 30 minutes
60% of total grade	40% of total grade

# Art and Design

Group V - Course Code: 0400

## Course Overview

The IGCSE Art and Design course is a practical course. It encourages personal expression, imagination, sensitivity, conceptual thinking, powers of observation, an analytical ability and practical attitudes.

Students learn to use various mediums to record from observation. They also learn how to develop ideas from initial attempts to final solutions. Students will be required to complete two papers with any medium they chose within two years. One is a coursework and the other is a controlled test. Both papers require students to submit a portfolio and a piece of final work.

In the first year, students will explore to various aspects of Art and Design through practice and art history study. Although art history study is not compulsory in IGCSE, it helps students understand and respond to the art movements.

In the second year, students need to develop a theme to their coursework project. It is strongly suggested that students complete their coursework at the end of January, so that they will have sufficient time to prepare for the externally set assignment (test) after that.

## Assessment

Coursework: Students produce a final outcome in a chosen medium and a portfolio of up to eight pages of maximum size A2.

Externally Set Assignment: Students take an eight-hour test (two days) and a preparatory period to produce their supporting studies of up to four pages of maximum size A2.

## Course Content

- Drawing: Materials such as charcoal, pen, pencil, pastel, colour pencil will be used to create drawings based on the visual elements such as proposition value, volume, texture.
- Painting: Both acrylic and watercolour.
- Graphic Design: Create idea with design principles.
- Printmaking: Itching, silkscreen print, linocut print, dry point etc.
- Art History: Introduction to different periods and movements in art history and civilization.





# Economics

## Group II - Course Code: 0455



### Course Overview

The Cambridge IGCSE Economics syllabus develops an understanding of economic terminology and principles and of basic economic theory. Learners study the economics of developed and developing nations and how these interrelate. They also learn to handle simple data and undertake economic analysis, evaluate information and discriminate between facts and value judgments in economic issues.

The syllabus not only provides an excellent foundation to study Economics further, it also encourages a better understanding of the world in which learners live, and helps them play an active part in the decision-making process, whether as consumers, producers or citizens of the local, national and international community.

### The syllabus covers the following topics:

1. The basic economic problem
2. The allocation of resources
3. Microeconomic decision makers
4. Government and the macroeconomy
5. Economic development
6. International trade and globalisation

### Assessment Details

Learners are assessed against three assessment objectives: knowledge and understanding; analysis; and critical evaluation and decision-making. Students will sit two examination papers.

#### Paper 1 Multiple choice

Candidates answer 30 multiple-choice questions. (Weighted at 30%)

#### Paper 2 Structured questions

Candidates answer one compulsory question, which requires them to interpret and analyse previously unseen data relevant to a real economic situation, and three optional questions from a choice of six. (Weighted at 70%)



# Business Studies

Group V - Course Code: 0450

## Course Overview

The Cambridge IGCSE Business Studies course gives learners an introduction to a broad range of key business principles, including an understanding of how business activity in both the public and private sectors shapes the world around them. The syllabus guides learners through topics such as business structure, innovation, change and finance. Links between these concepts are repeatedly drawn, in order to provide a holistic understanding of the modern business world.

Alongside deepening their knowledge of business theory, learners also enhance their numeracy skills. Therefore, the course provides an ideal foundation for learners to study A Level Business and also helps prepare them for their professional careers.

## The syllabus covers the following topics:

- 1 Understanding business activity
- 2 People in business
- 3 Marketing
- 4 Operations management
- 5 Financial information and decisions
- 6 External influences on business activity

## Assessment Details

Learners are assessed by sitting two exam papers:

- Paper 1 – Short Answer and Data Response
- Paper 2 – Case Study

### Components at a glance

This table summarises the key information about each examination paper.

Component	Time and marks	Skills assessed	Details	Percentage of qualification
Paper 1 Short Answer and Data Response	1 hour 30 minutes 80 marks	Knowledge and understanding Application Analysis Evaluation	You answer all <b>four</b> questions which are a mixture of short answers and structured data responses	50%
Paper 2 Case Study	1 hour 30 minutes 80 marks	Knowledge and understanding Application Analysis Evaluation	You answer all <b>four</b> structured questions which are based on an unseen case study, provided as an insert with the paper	50%

# Media Studies

(AQA GCSE) Course Code: 8572

GCSE Media Studies allows students to critically understand the role of the media in daily life and offers students an interactive and engaging course that aims to broaden minds. You will cover all aspects of media including language, representations, industries and audiences, giving students both an overall and in-depth understanding of how media represents the world.

MEDIA  
LANGAUAGE

MEDIA  
REPRESENTATION

MEDIA  
INSTITUTIONS

MEDIA  
AUDIENCES

## Media 1 (Year 10)

Section A will focus on Media Language and Media Representations. Questions in this section can test any two of the following forms:

magazines  
advertising and marketing  
newspapers  
online, social media and video games.

Section B will focus on Media Industries and Media Audiences. Questions in this section can test any two of the following forms:

radio  
music video  
newspapers  
online, social media and video games  
film industry

How it's assessed

Written exam: 1 hour 30 minutes  
84 marks  
35% of GCSE

## Media 2 (Year 11)

Section A will be based on a screening from an extract of one of the television Close Study Products and can test any area of the theoretical framework.

Section B will be based on either newspapers or online, social and participatory media and video games and can test any area of the framework.

How it's assessed

Written exam: 1 hour 30 minutes  
84 marks  
35% of GCSE

## Coursework

*What's assessed?*

Application of knowledge and understanding of the theoretical framework.

Ability to create media products.

*How it's assessed?*

A choice of one of five briefs  
60 marks  
30% of GCSE

*What do students produce?*

A media product for an intended audience.

# Computer Science

## Group V - Course Code: 0478

### Course Overview

Computer Science is the study of computers and computing as well as their theoretical and practical applications. Computer science applies the principles of mathematics, engineering, and logic to a lot of functions, including algorithm formulation, software and hardware development, and artificial intelligence.

IGCSE Computer Science helps learners develop their understanding of the component parts of computer systems, the principles of problem solving, and the ethical issues and potential risks when using computers. Learners learn to develop solutions to problems using a high-level programming language and gain confidence in computational thinking. The course can provide a foundation for further study in Computer Science and underpinning knowledge required for other subjects in engineering.

The syllabus covers the following topics:

- Data representation (Binary systems, Hexadecimal, Data storage)
- Communication and Internet technologies (Data transmission; Data security)
- Hardware and software (Logic Gages; Input & Output Devices; Storage; High and Low- Level Languages)
- Security and Ethics
- Algorithm design and problem-solving (Pseudocode; Flowchart)
- Programming (Programming Concept; Data Structure)
- Databases

### **Requirements for IGCSE Computer Science:**

Candidates should have good Math or Science skills and enjoy logical thinking and problem solving.

**Software package adopted:** Python 3.8

**System requirement:** As specified in BYOD device program

Class takes place in computer room. Student can use their BYOD device for Problem solving and working with projects and assignments in Computer Science.

### **Assessment Details:**

- Paper 1 Theory 1 hour 45 minutes (60%)  
This written paper contains short-answer and structured questions.
- Paper 2 Problem-solving and Programming 1 hour 45 minutes (40%)  
This written paper contains short-answer and structured questions

Paper 2 Problem-solving and Programming - pre-release material

The purpose of the pre-release material tasks is to direct students to some of the topics which will be examined in Paper 2. 20 of the marks in this paper are from questions testing students understanding gained from developing programmed solutions to these tasks. The pre-release material task will be solved by students, facilitated by tutor.

# Music

## Group V - Course Code: 0410

**Minimum requirement: Grade 5 or equivalent in music theory and instrument**

### Course Overview

The Cambridge IGCSE Music syllabus develops learners listen to, perform and compose music, encouraging aesthetic and emotional development, self-discipline and, importantly, creativity. As a result, learners enhance their appreciation and enjoyment of music, an achievement that forms an ideal foundation for future study and enhances lifelong musical enjoyment.

Learners study music of all styles; each style is placed in its historical and cultural context, and learners are encouraged to be perceptive, sensitive and critical when listening. Although the majority of the syllabus examines Western European music, the music of other cultures is also represented.

### The syllabus covers the following areas:

- a range of basic musical skills, knowledge and understanding, with a perceptive and critical response to the main historical periods and styles of Western music
- recognise and understand the music of selected non-Western traditions,
- an appreciation of cultural similarities and differences
- the development of an informed appreciation of music
- a foundation for further study in music at a higher level.

### Assessment details:

All candidates take three components:

Component 1 (**Listening** 40%) c.1 hour 15 minutes, 70 marks. Written examination based on CD recordings supplied by Cambridge International. Externally assessed.

- Aural awareness, perception and discrimination in relation to Western music.
- Identifying and commenting on a range of music from cultures in different countries.
- Knowledge and understanding of one World Focus from a non-Western culture and one Western Set Work.

Component 2 (**Performing** 30%) 50 marks. Coursework on two prepared performances, one individual and one ensemble. Internally marked/externally moderated.

- Technical competence on one or more instruments.
- Interpretative understanding of the music performed.

Component 3 (**Composing** 30%) 100 marks. Coursework on two contrasting compositions. Internally marked/externally moderated.

- Discrimination and imagination in free composition.
- Notation, using staff notation and, if appropriate, other suitable systems.

# Drama

## Group V - Course Code: 0411

Through practical and theoretical study, learners develop an understanding and enjoyment of drama, developing group and individual skills and studying ways to communicate ideas and feelings to an audience. They learn how to discover the performance possibilities of a text and other stimuli, and devise dramatic material of their own. Learners also develop their performance skills, the demonstration of which will form part of the final assessment.

**Aims:** The aims describe the purposes of a course based on this syllabus.

The syllabus aims to:

- develop candidates' understanding of drama through practical and theoretical study
- enable candidates to understand the role of actor, director and designer in creating a piece of theatre
- develop candidates' acting skills, both individually and in groups
- enable candidates to develop their skills in devising original drama
- help candidates communicate feelings and ideas to an audience
- foster understanding of the performance process and enable candidates to evaluate the various stages of that process
- encourage enjoyment of drama. Content overview Through practical and theoretical study, learners develop an understanding and enjoyment of drama, developing group and individual skills and studying ways to communicate ideas and feelings to an audience.

**Candidates work with:**

- extended extracts from published plays
- stimuli (short titles, poems, pictures, songs, historical events, stories) for devising dramatic pieces
- their own choice of dramatic repertoire
- dramatic material of their own devising Learners develop their individual and group performance skills, the demonstration of which forms part of the final assessment.

**There are 3 components to this course:**

Component 1: Understanding drama
<p><b>What's assessed</b></p> <ul style="list-style-type: none"> <li>• Knowledge and understanding of drama and theatre</li> <li>• Study of one set play from a choice of six</li> <li>• Analysis and evaluation of the work of live theatre makers</li> </ul>
<p><b>How it's assessed</b></p> <ul style="list-style-type: none"> <li>• Written exam: 1 hour and 45 minutes</li> <li>• Open book</li> <li>• 80 marks</li> <li>• 40% of GCSE</li> </ul>
<p><b>Questions</b></p> <ul style="list-style-type: none"> <li>• Section A: multiple choice (4 marks)</li> <li>• Section B: four questions on a given extract from the set play chosen (44 marks)</li> <li>• Section C: one question (from a choice) on the work of theatre makers in a single live theatre production (32 marks)</li> </ul>

Component 2: Devising drama (practical)
<p><b>What's assessed</b></p> <ul style="list-style-type: none"> <li>• Process of creating devised drama</li> <li>• Performance of devised drama (students may contribute as performer or designer)</li> <li>• Analysis and evaluation of own work</li> </ul>
<p><b>How it's assessed</b></p> <ul style="list-style-type: none"> <li>• Devising log (60 marks)</li> <li>• Devised performance (20 marks)</li> <li>• 80 marks in total</li> <li>• 40% of GCSE</li> </ul>
<p>This component is marked by teachers and moderated by AQA.</p>

Component 3: Texts in practice (practical)
<p><b>What's assessed</b></p> <ul style="list-style-type: none"> <li>• Performance of two extracts from one play (students may contribute as performer or designer)</li> </ul> <p>Free choice of play but it must contrast with the set play chosen for Component 1</p>
<p><b>How it's assessed</b></p> <ul style="list-style-type: none"> <li>• Performance of Extract 1 (20 marks) and Extract 2 (20 marks)</li> <li>• 40 marks in total</li> <li>• 20% of GCSE</li> </ul>
<p>This component is marked by AQA.</p>

# Sport

## BTEC International – Level 2 Certificate

The P.E. Department are excited to offer this new course - BTEC Sport L2.

The BTEC qualifications will be **equivalent to one GCSE**.

This is an exciting 2-year **practical, work-related course** for students interested in careers in the sporting and health sector.

### **Course Overview**

The course offers a vocational qualification that focuses on particular aspects of employment in the appropriate sector. After completing the course the learners would be able to progress to an appropriate Level 3 programme or take A Level examinations.

### **Syllabus Content**

- Fitness Testing and Training
  - Learners will develop their knowledge about the components of physical and skill related fitness and fitness training methods. They will explore lifestyle and psychological factors and effects these can have on sports training and performance. Learners will also investigate their personal fitness and performance.

### **Specialist Unit** (*Only one will be selected*)

- Practical Sport
  - Learners will improve and develop their own practical performance as well as analysing other athletes. They will develop a greater understanding of game rules, strategies, regulations and officials' roles and responsibilities in various sports.
- Outdoor Adventurous Activities
  - Learners will develop a range of techniques, skills and knowledge in exciting outdoor adventurous activities. They will be encouraged to develop and apply new practical skills and techniques to appropriate challenges. Learners will gain an understanding of wider issues associated with outdoor and adventurous activities.

### **Assessment Details**

Internally assessed through portfolio work. **There are no examinations.**

### **Grading system**

**PASS** Equivalent to grade "C" at GCSE

**MERIT** Equivalent to grade "B" at GCSE

**DISTINCTION** Equivalent to grade "A" at GCSE

# Proposed Subject Timetable

We try to schedule the timetable so that students can take their first choices; however, please note that the timetable may change and we reserve the right to do so. In the event that we need to make changes, students will be given preferences based on a first-come, first-served basis.

- Please look at the 6 options below and choose one subject from each box.
- You must choose at least one Science subject (green) and one Language Subject (blue).
- You must not choose the same subject.

Please submit your choices in the Subject Selection Google Form link:

<https://docs.google.com/forms/d/e/1FAIpQLSdWKf1NittT6VIF4ppNxeg7eij4Dg3rgG2yHeQVRFsRcTtIIA/viewform>

The final deadline for the submission of your choices is **as soon as possible**.

Biology
Media Studies (GCSE)
Business Studies

Chemistry
Economics
Music

Physics
Chemistry
Drama
Travel & Tourism

Geography
Art
Biology
Psychology (GCSE)

History
Sport (BTEC)
Computer Science

Chinese
Spanish

Cambridge ICE	KIS
Humanities	optional
Sciences	compulsory
Creative and Professional	optional
Languages	compulsory