



**YEARS**  
OF STRENGTHENING  
COMMUNITIES

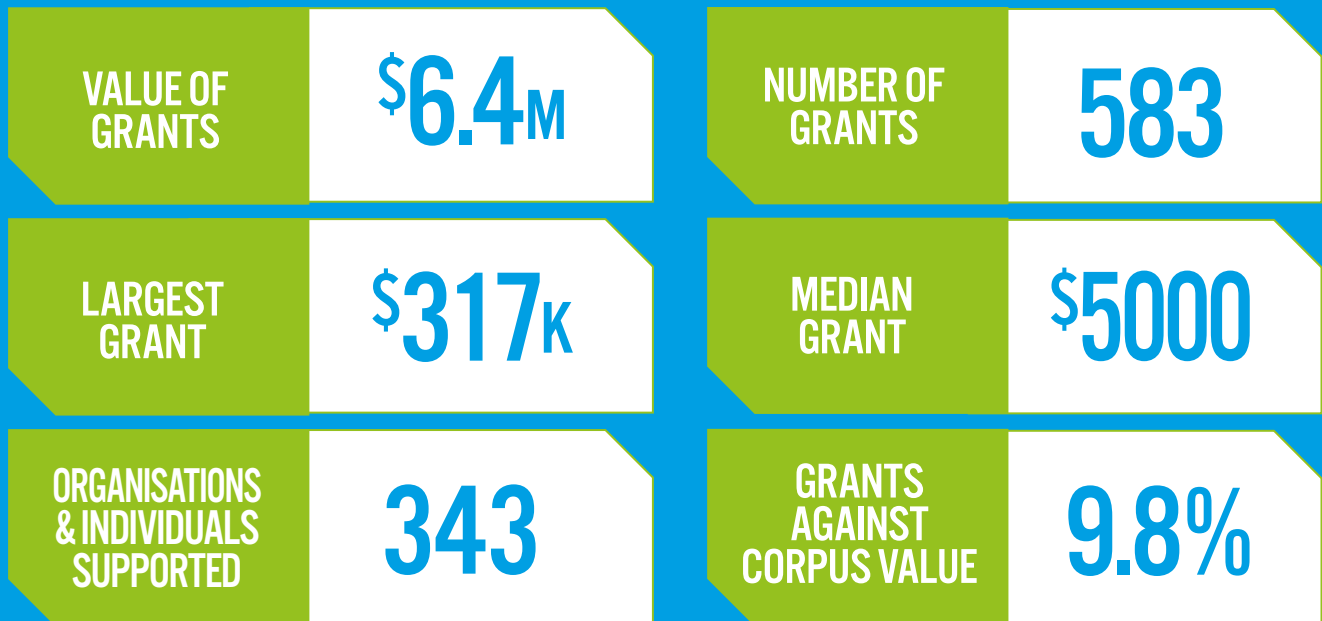


**AUSTRALIAN  
COMMUNITIES**  
FOUNDATION

**GRANTS & FUNDS 2016/17**

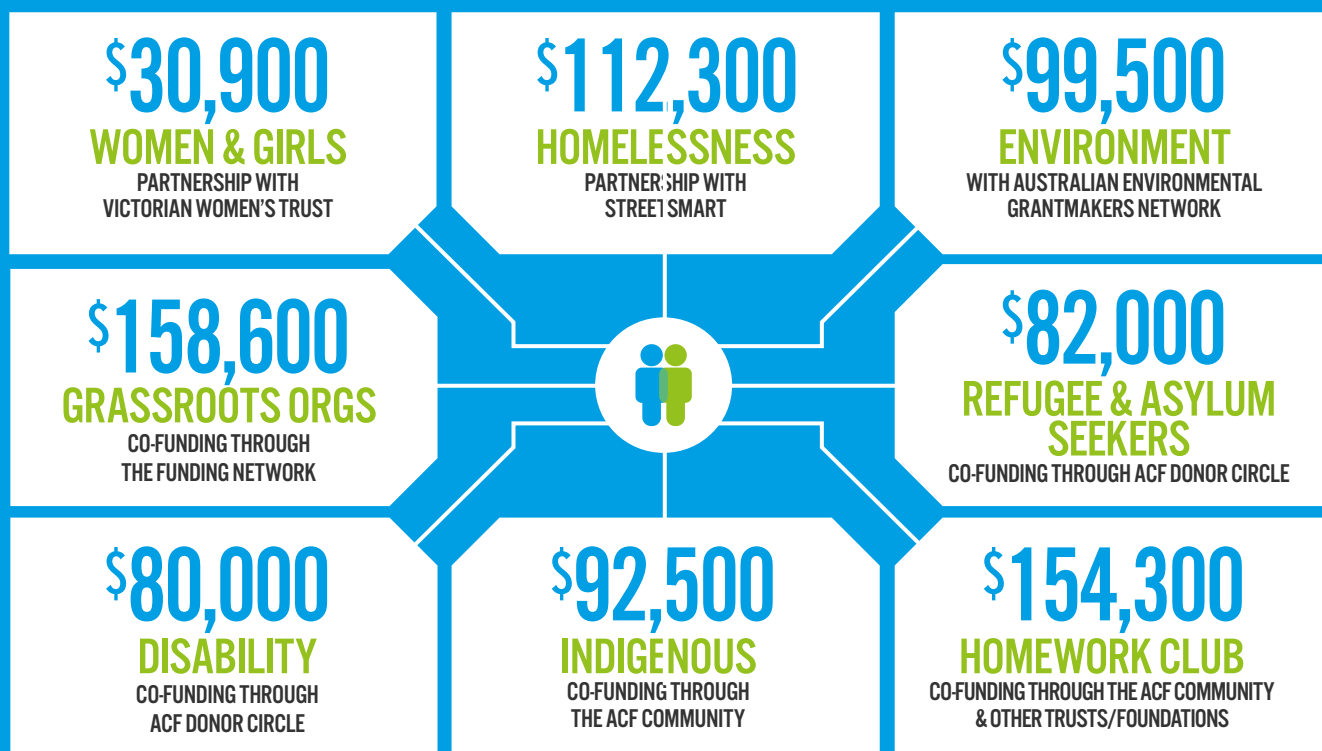
# YEAR IN REVIEW 2016/17

In 2016/17 our donor community gave \$6.4 million across a range of issues, target groups and locations. 95% of giving was within Australia with 33% going to national initiatives.

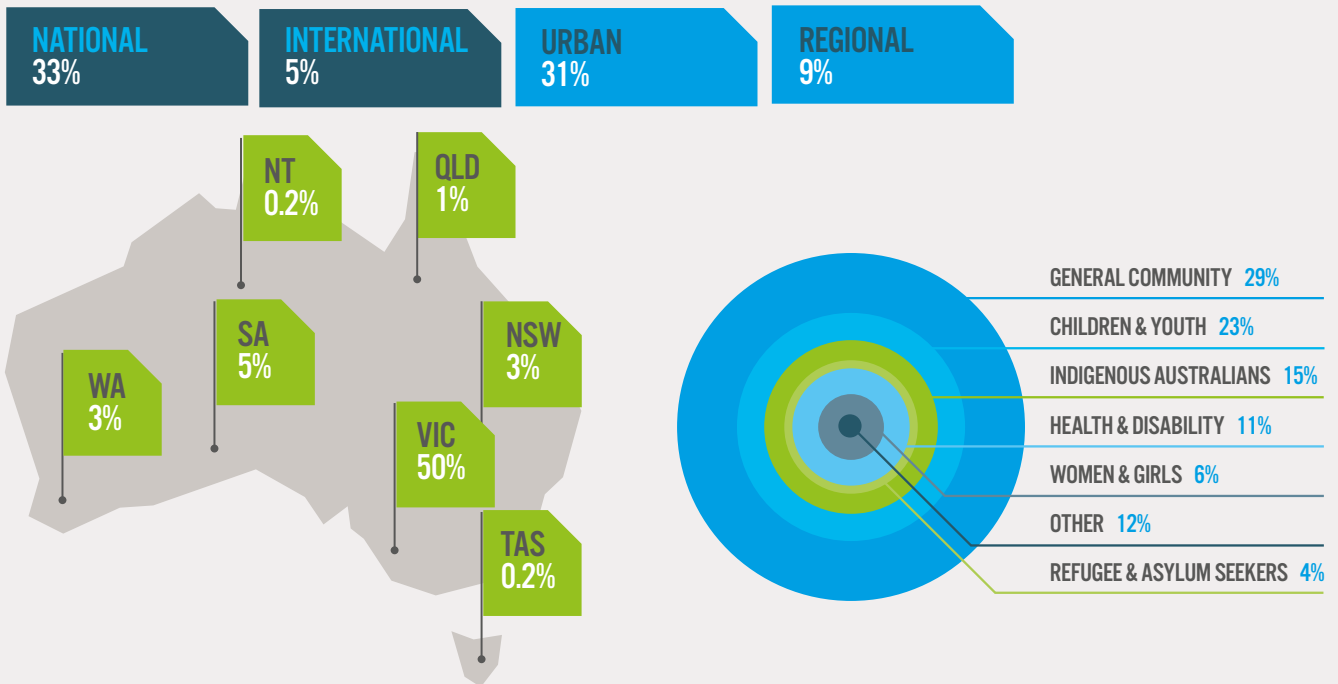


## WORKING COLLECTIVELY

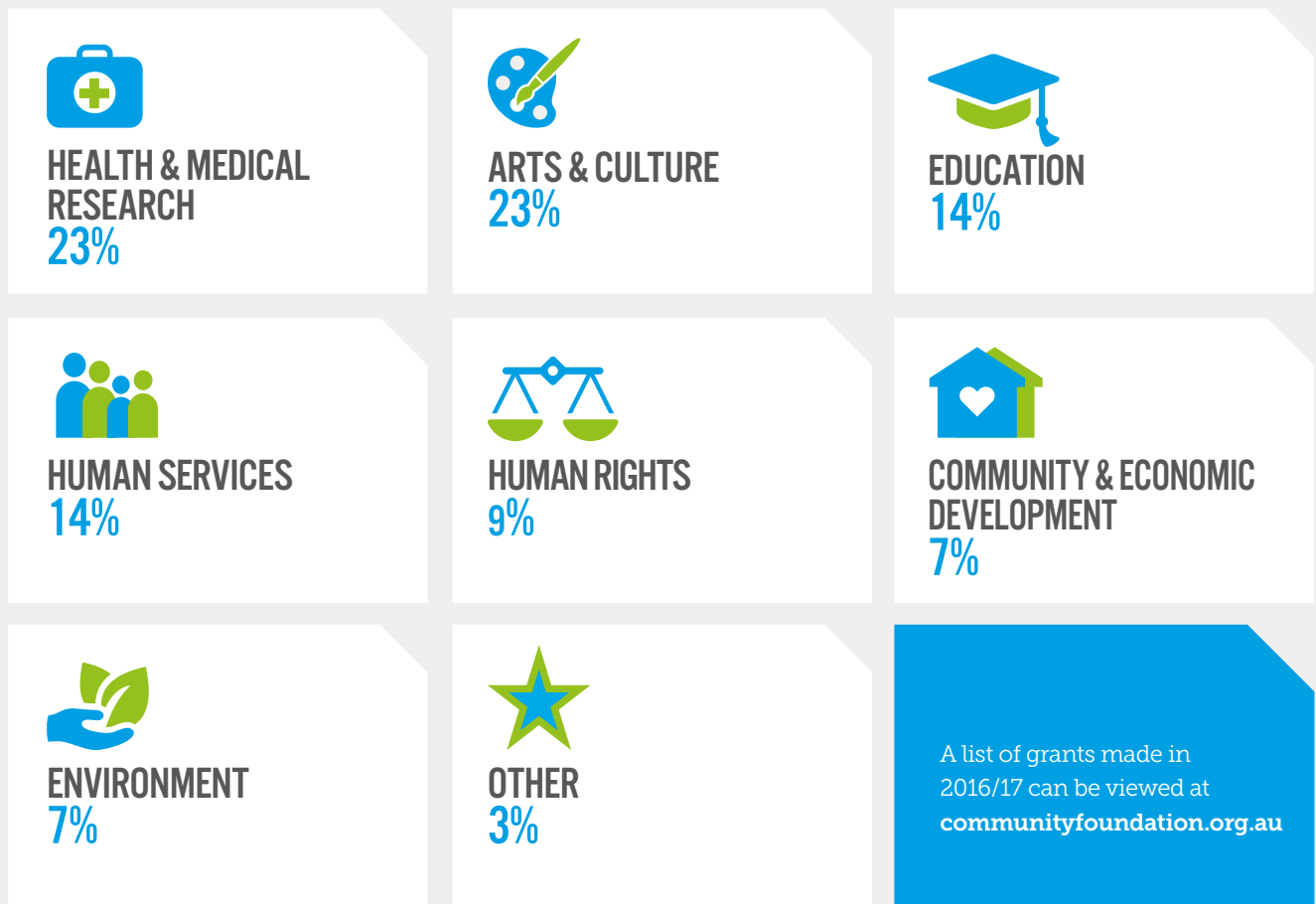
ACF supports collaborative and strategic grantmaking by helping donors connect with causes and facilitating collective action with other ACF donors and philanthropic organisations. Here is a snapshot of some of our collective efforts in 2016/17.



# SUPPORTING COMMUNITIES & TARGET GROUP



# SUPPORTING THE CAUSES AUSTRALIANS CARE ABOUT



# GRANTS

RECIPIENT	PROJECT	FUND
<b>Arts &amp; culture</b>		
3MBS-FM Development Fund	General purposes	Henkell Family Fund
3MBS-FM Development Fund	Mozart Melodies for the Mozart Marathon	Henkell Family Fund
3PBSFM	General support	Miller Fund
3RRR Transmission Fund	General support	Miller Fund
45 Downstairs Inc	General support	Ballandry (Peter Griffin Family) Fund
45 Downstairs Inc	General support	Espero Fund
45 Downstairs Inc	General support	Hart Line Fund
Abbotsford Convent Foundation	General support	Dara Fund No. 2
Abbotsford Convent Foundation	General purposes	Henkell Family Fund
ACT Writers Centre	June Shenfield Poetry Prize	June Shenfield Poetry Award Fund
Australian Centre for Contemporary Art	General purposes	Sally Browne Fund
Australian Centre for Contemporary Art	Education Programs	Willmore Fund
Australian Centre for the Moving Image	ACMI Advocates (Admit +1 Access Program)	Sally Browne Fund
Australian Centre for the Moving Image	General support	Sally Browne Fund
Australian International Opera Award	General purposes	Henkell Family Fund
Australian National Academy of Music	Alchemy	Henkell Family Fund
Australian National Academy of Music	General purposes	Sunning Hill Fund
Australian National Academy of Music	Student Syndicate	Willmore Fund
Australian National Academy of Music	General purposes	Willmore Fund
Australian Youth Orchestra Appeal Trust Fund	General purposes	Henkell Family Fund
B-24 Liberator Memorial Australia	Restoration of B-24 Liberators	Wanless Family Fund
Bangarra Dance Theatre	Bangarra Mental Health Program	Annamila Fund
Black Dog Institute	Kurdiji 1.0	Vilde Family Fund
Canberra Symphony Orchestra Donations	Australian German cultural exchange with the Canberra Symphony Orchestra	Henkell Family Fund
CCN Newport Foundation	Empowering Women with Cooking and Social Inclusion	Hobsons Bay Community Fund
CitiOpera (formerly Melbourne City Opera Fund)	General purposes	Henkell Family Fund
Co Opera Inc	Eugene Onegin Tour 2017	Henkell Family Fund
Co Opera Inc	General purposes	Henkell Family Fund
Creative Partnerships Australia	Australian Cultural Fund: Deborah Cass Prize for Writing	Hart Line Fund
Documentary Australia Foundation	Program development grant	Beecher Family Charitable Fund
Dungala Kaiela Foundation	Dungala Kaiela Writing Awards	Fairer Futures Fund
Flinders Quartet	Cello Chair	Gumnut One
German Lutheran Trinity Church	Piano for the German-Lutheran Trinity Church	Henkell Family Fund

RECIPIENT	PROJECT	FUND
<b>Arts &amp; culture</b>		
Jam Factory Contemporary Craft & Design Inc	General purposes	Carreker Community Fund
Jewish Museum of Australia	Digitizing the Visual Art in the collection	EM Horton Family Fund
Kids Own Publishing	Scarlet's Fund Volunteer Stipends 2016	Scarlet's Fund
King David School Scholarship Fund	King David School Scholarship Fund	Sharman Mitzvah Fund
Koorie Heritage Trust	Exhibition and Indigenous Artist Support	Fairer Futures Fund
Lyric Opera of Melbourne	Coronation of Poppea opera production	Henkell Family Fund
Lyric Opera of Melbourne	Performance of The Japanese Princess	Henkell Family Fund
Lyric Opera of Melbourne	General support	Henkell Family Fund
Malthouse Theatre	General purposes	Sally Browne Fund
Malthouse Theatre	Suitcase Series	Willmore Fund
Mansfield Hospital Auxiliary	Mansfield Hospital Auxiliary's art prizes	Mansfield Community Fund
Melba Opera Fund	Mentor program for scholars	Hamer Family Fund
Melba Opera Fund	General support	Henkell Family Fund
Melbourne Bach Choir Inc	Scholarship	Hamer Family Fund
Melbourne Bach Choir Inc	General purposes	Henkell Family Fund
Melbourne Bach Choir Inc	Scholarship	Henkell Family Fund
Melbourne Chamber Orchestra Donation Fund	Support of Core Concert Season and Victorian Regional Touring program	Hamer Family Fund
Melbourne Festival	Patrons Circle	Sally Browne Fund
Melbourne Fringe Fund	General purposes	Sally Browne Fund
Melbourne Recital Centre Public Fund	General support	Henkell Family Fund
Melbourne Recital Centre Public Fund	Songmakers Australia: Salon Concerts	Henkell Family Fund
Melbourne Symphony Orchestra Fund	General support	Henkell Family Fund
Melbourne Theatre Company	Ambassadors Program	Willmore Fund
Melbourne Writers Festival	MWF's Disability Action / AUSLAN program	B B & A Miller Fund
Melbourne Writers Festival	General purposes	Hart Line Fund
Melbourne Writers Festival	General purposes	Sally Browne Fund
Mietta Foundation Inc	Mietta Song Competition	Henkell Family Fund
More Than Opera	German-Australian Opera Grant	Henkell Family Fund
Musica Viva Development Fund	Regional Schools Music Program (Victoria)	Hamer Family Fund
Opera Australia	Capital Fund	Henkell Family Fund
Opera Foundation Australia Trust Fund	Deutsche Opera Berlin Award	Henkell Family Fund
Penninsula Summer Music Festival Public Fund	2017 festival program	Henkell Family Fund
Port Fairy Spring Music Festival Inc.	Indigenous component to the Port Fairy Spring Music Festival	Annamila Fund
Queensland Braille Writing Association	Dickinson Memorial Literary Competition prizes	Clack Family Memorial Fund

RECIPIENT	PROJECT	FUND
<b>Arts &amp; culture</b>		
Queensland Theatre Company	General support	Davie Family Fund
Rawcus Theatre Company Inc	Rawcus Theatre Company Inc	EM Horton Family Fund
Regional Arts Victoria	Education and Families Program	Clemenger Staff Fund
Royal Melbourne Philharmonic Society	General purposes	Henkell Family Fund
Short Black Opera	General purposes	Annamila Fund
Songlines Music Aboriginal Corporation Public Fund	Songlines Music Aboriginal Corporation	Towards a Just Society Fund
St Mark's Fitzroy	St Marks music development	St Mark's Anglican Church Fitzroy Choral Scholarship Fund
St Paul's Cathedral Melbourne	125 Years Photography Program	Henkell Family Fund
State Orchestra of Victoria	General support	Henkell Family Fund
Stella Prize Inc Public Fund	Stella Forever Fund	Koshland Innovation Fund
Stella Prize Inc Public Fund	General purposes	Orni-Albers Fund
Stephanie Armstrong	Nurturing cross-cultural relationships	Towards a Just Society Fund-Extension Fund
The Arts Centre	Seat Endowment	Henkell Family Fund
The Arts Centre	General purposes	Henkell Family Fund
The Australian Boys' Choir Fund	General support	Henkell Family Fund
The Lieder Society of Victoria	General purposes	Henkell Family Fund
The Melbourne Opera Company Limited	Lohengrin production	Henkell Family Fund
The Melbourne Opera Company Limited	HMS Pinafore support	Henkell Family Fund
The Melbourne Opera Company Limited	Tannhäuser and Anna Bolena	Henkell Family Fund
The Opera Studio Melbourne	General support	Henkell Family Fund
The Push	Push/ Girls Rock programs in Melbourne	Clack Family Memorial Fund
The Richard Wagner Society Special Productions Fund	General support	Henkell Family Fund
The Trustee for Bendigo Art Gallery Foundation	General purposes	Howard Nathan Fund
Trustee for Opera Scholars Australia Trust	General support	Henkell Family Fund
Trustee for Opera Scholars Australia Trust	Scholarship for Miss Shakira Dugan	Sylvia Fisher Fund
Victorian College of the Arts	VCA Access Program	Ashworth Family Fund
Victorian Opera Company Ltd	Leader Circle	Henkell Family Fund
Victorian Opera Company Ltd	Artist Circle	Henkell Family Fund
Western Edge Youth Art Inc	Western Edge Youth Art Inc	EM Horton Family Fund
Writers Victoria	Hazel Rowley Literary Fellowship	Hazel Rowley Literary Fund
Writers Victoria	Highly Commended Award	Hazel Rowley Literary Fund
Zelman Memorial Symphony Orchestra Donations Fund	Shostakovich 13 Babi Yar Commemoration Concert	Henkell Family Fund

RECIPIENT	PROJECT	FUND
<b>Community &amp; economic development</b>		
Alpine Search and Rescue Victoria	General support	Miller Fund
Architects without Frontiers	AWF Supporter Network Contribution 2017	Dina Grollo Community Fund
Asylum Seekers Resource Centre	Supply driving lessons gift vouchers	Espero Fund
Australian Environment Grantmakers Network	Learning from the Appalachian Transition Initiative	Melliodora Fund
Australian Lutheran World Service	Walk My Way	Henkell Family Fund
Australian-German Welfare Society Inc	Australian German Welfare Society	Henkell Family Fund
Barefoot Initiative	Five water carts and an educational scholarship	The Ripple Fund
Befriend Inc	General support	P J & J P Murphy Fund
Brett Gornall	Business development	Towards a Just Society Fund-Extension Fund
Brighton Grammar School Foundation Limited	Sporting pavilion building	James Family Fund
Catherine House Trust	Zero Project in conjunction with the Don Dunstan Foundation	Carreker Community Fund
Creativity Australia	General support	Beecher Family Charitable Fund
Cricket Victoria	Lohy's Little Legends	John Cummins Memorial Fund (Extension)
Dungala Kaiela Foundation	Gift Fund	Fairer Futures Fund
Fitzroy Police	Sudanese basketball competition	Espero Fund
Friends of Floyd Garden	Floyd Lodge Community Gardens Expansion Project	Hobsons Bay Community Fund (Extension)
German Lutheran Trinity Church	General support	Henkell Family Fund
Glenview Community Services	Operational support	Glenorchy Community Fund
Hammond Care	Fulfilling Last Wishes: The Dreams Project	Slater & Gordon Community Fund
Healesville Indigenous Community Services Association	The Belonging Place	Towards a Just Society Fund
Hobart Women's Shelter	Recreational Family Activities	Glenorchy Community Fund
Hope Ink	The Shine Program	Hobsons Bay Community Fund
Jesuit Social Services	Artful Dodgers Studios	Ballandry (Peter Griffin) Family Fund
Jesuit Social Services	Artful Dodgers Studios	Paterson Family Fund
Jesuit Social Services	Artful Dodgers Studios	Sally Oatley Memorial Fund
Jubilee Sailing Trust	General support	David Boykett Tall Ships Voyaging Fund
Kokoda Track Foundation	Teacher training in PNG	Beecher Family Charitable Fund
Lifeskills Plus Inc	Sensory Garden Parasol	Unico Community Fund
Loddon Campaspe Multicultural Services	Cultural Heritage And Documentation Project	EastWeb Fund
Louis Joel Arts and Community Centre	Seniors Stories	Hobsons Bay Community Fund (Extension)
Mansfield Shire Council	Skate Park Development	Mansfield Community Fund
Make a Wish Foundation	General purposes	Baker Watson Fund
Melbourne Myanmar Christian Fellowship	Youth Language and Culture Training Course	Hobsons Bay Community Fund (Extension)
Martin Luther Homes Boronia Inc	General purposes	Henkell Family Fund

RECIPIENT	PROJECT	FUND
<b>Community &amp; economic development</b>		
Per Capita Australia Limited	Per Capita Annual Tax Survey 2017	Social Justice Fund
Reconciliation Australia LTD	Australian Indigenous Governance Institute new partnership agreement	Annamila Fund
Refugee Legal	General purposes	Sunning Hill Fund
Salvation Army Southern Territory Social Work	Red Shield Appeal	Geostudies Fund
SecondBite	General support	Abercrombys Charitable Fund
SecondBite	Improved nutrition, improved health of children and families in Hobsons Bay	Hobsons Bay Community Fund
SNAICC	General purposes	Beecher Family Charitable Fund
Streat	General purposes	Semaphore Fund
StreetSmart Australia	Youth Law: Creating a positive future	Beeton Family Fund
The Australia Institute	In support of Canberra conference (Aug) re Anti-Corruption Commission	Fairer Futures Fund
The Australia Institute	The Australia Institute challenge/matching grant	Social Justice Fund
Tabulam and Templer Homes for the Aged Inc	General purposes	Henkell Family Fund
TAD Disability Services	Freedom Wheels	Unico Community Fund
Testigo Africa	General purposes	Juno Fund
The Foundation for Young Australians	Empower Youth	Mutual Trust Team Charitable Fund
The Funding Network	Matched funding	Fairness Fund
The Funding Network	Matched funding	Johnstone Gumption Fund
The Funding Network	The Funding Network Pledges	Bell Family Fund
The Funding Network	The Funding Network Pledges	Beecher Family Charitable Fund
The Funding Network	The Funding Network Pledges	Clare Murphy Fund
The Funding Network	The Funding Network Pledges	Fairer Futures Fund
The Funding Network	The Funding Network Pledges	Katrina's Sparkle Fund
The Haven Foundation	Building contributions	Ralph & Betty Sims Fund
UNICEF Australia	General support	Dorrie Alcock Memorial Fund
University of Melbourne	Project: Living well – apartments, comfort and resilience given climate change	Green Cities Innovation Fund
Victorian Women's Benevolent Trust	Dugdale Trust for Women and Girls	Fairer Futures Fund
Weenthunga Health Network Inc	Weenthunga Women's Health Day in Bendigo Student Bursaries & operational support	Anna Wearne Fund
Winda Mara Aboriginal Corporation	Aboriginal Family Therapy Program	Alf & Meg Steel Fund
Wonthaggi Neighbourhood Centre	Bass Coast L2P Program	Gerard Patrick Lonergan Scholarship Fund



RECIPIENT	PROJECT	FUND
<b>Education</b>		
100 Story Building	Early Harvest Project	Hart Line Fund
Aboriginal Evangelical Fellowship Family and Youth Services	Community Chaplains program	Ralph & Betty Sims Fund
Aboriginal Literacy Foundation	Western Victoria After School Tutoring Program	EastWeb Fund
Alola Foundation	Alola Foundation	Dorrie Alcock Memorial Fund
Alola Foundation	General purposes	The Ripple Fund
Alola Foundation	Operational support	Claire Murphy Fund
Ann Mitsis	Research Project	Tony Adams Extension Fund
Ardoch Youth Foundation Inc	Education support	FGM Charitable Fund
Ardoch Youth Foundation Inc	Southern Teaching Unit	Holding Redlich Social Justice Fund
Australian Centre for Contemporary Art	Education Programs	Willmore Fund
Australian Youth Climate Coalition Gift Fund	Summit conference and training activities for AYCC and Seed	Fairer Futures Fund
Banyule Community Health Service Inc	Pavilion School laptops	Anna Wearne Fund
Barkuna Incorporated	The Transition Program	Unico Community Fund
Berry Street Victoria	Better Outcomes – Brighter Futures	Alf & Meg Steel Fund
Brave Foundation	Educational resource packs	Glenorchy Community Fund
Breast Cancer Network Australia	Free Information Forums	New Idea Charitable Fund
Brotherhood of St Laurence	HIPPY program	Silver Gold Fund
Caterina Ho	Doctoral Studies – Final instalment	Tony Adams Extension Fund
CatholicCare	Northern Bay Secondary College After Hours Learning Program	Homework Club Partnership Fund (Extension)
Chisholm Institute of Technical and Further Education	General purpose	James Family Fund
Deutsche Schule Melbourne Building Fund	General support	Henkell Family Fund
Disability Resources Centre Inc	Small Education Grants to Indigenous People with Disabilities	Towards a Just Society Fund
Documentary Australia Foundation	Fair Agenda: The Hunting Ground	Omi-Albers Fund
Douglas Proctor	Doctoral Studies – Final instalment	Tony Adams Extension Fund
Fitzroy High School	Dare to Dream Scholarship Program	John Cummins Memorial Fund (Extension)
Footscray City College	Dare to Dream Scholarship Program	John Cummins Memorial Fund (Extension)
Foundation For Rural and Regional Renewal	Daylesford Primary School: MultiLit Literacy Program	Betty Fulton Fund
Foundation For Rural and Regional Renewal	School Voucher Program	Betty Fulton Fund
Ganbina	General purposes	Sunning Hill Fund
Ganbina	Scholarships	Thu Giang Nguyen Fund
Gateway Community Services	Disability Education Sessions	Hobsons Bay Community Fund
Geelong Region Local Learning and Employment Network Inc	Indigenous Learning	Towards a Just Society Fund-Extension Fund

RECIPIENT	PROJECT	FUND
<b>Education</b>		
Geelong Region Local Learning and Employment Network Inc	Implementing The Storyteller game in cultural awareness activities	Towards a Just Society Fund-Extension Fund
Graduate Women Victoria	Graduate Women Victoria scholarships	Graduate Women Victoria Donors Fund
Graduate Women Victoria	Graduate Women Victoria Scholarships online application system	Graduate Women Victoria
GreenInstitute	Women's Environmental Leadership Australia 2017	Melliodora Fund
Griffith University	The Grocon Indigenous Study Scholarship	Dina Grollo Community Fund
Himalayan Development Foundation Australia	General support	Miller Fund
I-Manifest	Creative Apprenticeship Program – The Forge	Clemenger Staff Fund
Indigenous Literacy Foundation	General support	Hart Line Fund
James Brown	International study tour	Southern General Practice Education Fund
Karrkad-Kanjddji Trust	Nawardeken Academy at Kabulwarnamyo	Digger & Shirley Martin Environment Fund
Kay Hartwig	Research Project	Tony Adams Extension Fund
Kids Under Cover	Five Kids Under Cover Scholarships	M & L Attwood Fund
Kirrilee Hughes	Professional Development	Tony Adams Extension Fund
Korumburra Secondary College	Dare to Dream Scholarship Program	John Cummins Memorial Fund (Extension)
Library Board of Victoria	Australian Learning Lecture initiative	Koshland Innovation Fund
Library Board of Victoria	Australian Learning Lecture initiative	Silver Gold Fund
Lung Foundation Australia	Mesothelioma nurse course	Slater & Gordon Asbestos Research Fund
MacKillop Family Services	MacKillop music related activities	The Robison Fund
Malthouse Theatre	Suitcase Series	Willmore Fund
Maribyrnong City Council	Homework Club	Homework Club Partnership Fund (Extension)
Mel Jeffery	Sally Isaac Memorial Scholarship Fund Award	Sally Isaac Memorial Scholarship Fund
Melbourne Girls College	The Giang Nguyen Science Prize	Thu Giang Nguyen Fund
Melbourne Indigenous Transition School	General support	Hilary Dixon And John Dempster
Monash University	The Eric Dubsky Memorial Scholarship	Dubsky Family Fund
Monash University	Yulenj Indigenous Engagement Unit – Elder in residence program	Elizabeth Eggelston Fund
New Hope Foundation Inc	Multicultural Links Program	Hobsons Bay Community Fund
Newcomb Secondary College	Dare to Dream Scholarship Program	John Cummins Memorial Fund (Extension)
North Geelong Secondary College	Dare to Dream Scholarship Program	John Cummins Memorial Fund (Extension)
Northern College of Arts and Technology	Dare to Dream Scholarship Program	John Cummins Memorial Fund (Extension)
Peter Hurley	Doctoral Studies – 2nd instalment	Tony Adams Extension Fund
Princes Hill Secondary College	Dare to Dream Scholarship Program	John Cummins Memorial Fund (Extension)
Reading Out of Poverty	Christmas Gift Giving	Slater & Gordon Community Fund

RECIPIENT	PROJECT	FUND
<b>Education</b>		
RMIT	Bachelor of Nursing Scholarship	Herbert and Inge Littauer Fund
Sensorium Theatre	Sensory Storytime	Impact 100 WA
Solange Uwingeneye	Tuition costs for nurse registration bridging course	B B & A Miller Fund
Solange Uwingeneye	Tuition costs for nurse registration bridging course	Beecher Family Charitable Fund
Solange Uwingeneye	Tuition costs for nurse registration bridging course	Herbert and Inge Littauer Fund
South Australian Museum Foundation Fund	Indigenous Cadetship Program	Carreker Community Fund
Southport Special School	Workplace giving: Southport Special School	Dina Grollo Community Fund
St Albans Secondary College	Dare to Dream Scholarship Program	John Cummins Memorial Fund (Extension)
St Martins Youth Arts Centre	St Albans Project	Clemenger Staff Fund
Stars Foundation	Aboriginal Girls' Education	Social Justice Fund
StreetSmart Australia	Council to Homeless Persons: Peer Education and Support Program	Story Street Fund
Subodhanie Weerakkody	Doctoral Studies – 1st instalment	Tony Adams Extension Fund
Sunshine College	Dare to Dream Scholarship Program	John Cummins Memorial Fund (Extension)
Swinburne University	First in the Family Scholarships	Apollo Fund
The Ivanhoe Grammar School	Annual Aviation Scholarship	Wanless Family Fund
The Smith Family	General support	Geostudies Fund
The Smith Family	Let's Read program	Hart Line Fund
The Trustee for The AMA Indigenous Medical Scholarship	Indigenous Medical Scholarship	Anna Wearne Fund
Trustees of Marist Fathers for the province of Australia	Teacher support: Ranong, Thailand	Greg Larsen Family Fund
University College	Scholarship	Betty Fulton Fund
University College	The University College Scholarship Program	McGregor Family Fund
University College	Jill Williams Annual Scholarship	Williams Fund
Weenthunga Health Network Inc	Scholarship for an Indigenous Occupational Therapist	Anna Wearne Fund
Wellsprings for Women	General support	P J & J P Murphy Fund
Western Chances	General purposes	Annamila Fund
Western Chances	General purposes	McGregor Family Fund
Western English Language School	Homework Club	Homework Club Partnership Fund (Extension)
Western English Language School	Homework Club	Silver Gold Fund
Western Sydney University	Scholarships	Alison Patrick Memorial Fund
Western Sydney University	General support	Hart Line Fund

RECIPIENT	PROJECT	FUND
<b>Education</b>		
Williamstown Community and Education Centre	English Language Classes for Refugees, Asylum Seekers and Migrants	EastWeb Fund
Williamstown Community and Education Centre	Financial Literacy for Positive Living	Hobsons Bay Community Fund
Windeward Bound Trust	Sponsorship for Youth	David Boykett Tall Ships Voyaging Fund
Yalari Ltd	Indigenous scholarships	RO Fund
Yarraville Special Developmental School	iPads for All	Hobsons Bay Community Fund
Youth Opportunities Association (SA)	The YES Project (Youth Empowerment South-East)	Impact 100 South Australia
Zonta House Refuge Association	Positive Pathways to Safety for Women and the Community	Slater & Gordon Community Fund

RECIPIENT	PROJECT	FUND
<b>Environment</b>		
Abbotsford Convent Foundation	Sapling School	Hamer Family Fund
Alternative Technology Association	Bringing Aboriginal Leaders to the Community Energy Congress	Alf & Meg Steel Fund
Australian Conservation Foundation	Murray-Darling Rivers Fellowship	Fairer Futures Fund
Australian Conservation Foundation	Murray-Darling Rivers Fellowship	Melliodora Fund
Australian Environment Grantmakers Network	Just Transitions tour	Hamer Family Fund
Australian Marine Conservation Society	General support	Curlew Fund
Australian Wildlife Conservancy	General support	Ballandry (Peter Griffin Family) Fund
Australian Wildlife Conservancy	General purposes	Davie Family Fund
Australian Wildlife Conservancy	Newhaven Feral Proof Fence	Keith & Jeannette Ince Fund
Australian Wildlife Conservancy	General purposes	Keith & Jeannette Ince Fund
Australian Youth Climate Coalition Gift Fund	Seed Indigenous Youth Climate Network	B B & A Miller Fund
Australian Youth Climate Coalition Gift Fund	Power Shift 2017	B B & A Miller Fund
Australian Youth Climate Coalition Gift Fund	AYCC Youth Summit	Fairer Futures Fund
Australian Youth Climate Coalition Gift Fund	Power Shift 2017	Melliodora Fund
Beyond Zero Emissions Inc	Zero Carbon Communities and Zero Carbon Australia programs	Hamer Family Fund
Beyond Zero Emissions Inc	Zero Carbon Australia	Melliodora Fund
Bush Heritage Australia	General purposes	Geostudies Fund
Bush Heritage Australia	Nardoo Hills	Geostudies Fund
Central Victorian Biolinks Alliance	Central Victorian Biolinks Alliance	Alf & Meg Steel Fund
Centre for Policy Development Ltd	Sustainable Economy program	Digger & Shirley Martin Environment Fund
Centre for Policy Development Ltd	Sustainable Economy program	Fairer Futures Fund
Centre for Policy Development Ltd	Support of policy development	Hamer Family Fund
Change Agency	Community Organising Fellowship	B B & A Miller Fund
Change Agency	Community Organising Fellowship	Fairer Futures Fund
Climate Council	Climate Media Centre – Educational Tools for Rural and Regional Australia	Hamer Family Fund
Climate Institute (Australia) Ltd	Core operational funding	Digger & Shirley Martin Environment Fund
Climate Institute (Australia) Ltd	50 for 5 Program	Fairer Futures Fund
Climate Institute (Australia) Ltd	Analysis, workshops and events to promote progress towards a Zero Carbon Economy	Hamer Family Fund
Conservation Council of Western Australia	Frack Free Future Campaign	rmg Account
Documentary Australia Foundation	Our Power	B B & A Miller Fund
Enova Energy	Enova Energy Education Program	Hamer Family Fund
Environment East Gippsland	Kuark Forest Defence Fund	Vilde Family Fund
Environment Victoria Inc	La Trobe Valley reconstruction program	Hamer Family Fund

RECIPIENT	PROJECT	FUND
<b>Environment</b>		
Environment Victoria Inc	Step Up Victoria campaign	Melliodora Fund
Environmental Defenders Office QLD	Protection of the New Acland court win	Fairer Futures Fund
Environmental Defenders Office QLD	Protection of the New Acland court win	Melliodora Fund
Environmental Defenders Office QLD	Protection of the New Acland court win	rmg Account
Environmental Defenders Office QLD	Protection of the New Acland court win	Vilde Family Fund
Environmental Justice Australia	Matched giving campaign	Fairer Futures Fund
Flinders Local Action Group	Footprint-Decisions	Hamer Family Fund
GreenInstitute	Women's Environmental Leadership Australia 2017	Melliodora Fund
Invasive Species Council	General purposes	Curlew Fund
Kokoda Track Foundation	General support	Beecher Family Charitable Fund
Market Forces	Campaign for divestment in fossil fuels	Fairer Futures Fund
Nature Conservation Council of NSW Environment Gift Fund	Community Organising Fellowship educational program 2017	Digger & Shirley Martin Environment Fund
Nature Conservation Council of NSW Environment Gift Fund	Training program for community organisers in sustainability	Hamer Family Fund
NatureFoundation	Water for Nature	Melliodora Fund
NatureFoundation	Water for Nature	rmg Account
Norman Wettenhall Foundation	Small Environmental Grant Scheme: Sea Turtle Foundation	B B & A Miller Fund
Norman Wettenhall Foundation	General support	Williams Fund
Port Phillip Ecocentre Incorporated	Habitat Action for a Sustainable Future	Hamer Family Fund
Righteous Pups Australia	Training facilities Diabetes Alert Dog Program & Bridging the Gaps	Jared Dunscombe Fund
Solar Citizens Australia	Ending Australia's Clean Energy attacks	Hamer Family Fund
Solar Citizens Australia	Ending Australia's Clean Energy Attacks	rmg Account
Tasmanian Land Conservancy	ALCA Private Land Conservation Conference 2016	Melliodora Fund
The Lost Dogs Home	General support	Henkell Family Fund
The Lost Dogs Home	General purposes	Sunning Hill Fund
Trust For Nature	Brolga Wetland	Hamer Family Fund
University of Melbourne	Positive Legacy Award	Green Cities Innovation Fund
World Wide Fund For Nature Australia	General purposes	Sunning Hill Fund
Yea Community House	Yea Community House & Yea Community Garden: Break it Down	Hamer Family Fund

RECIPIENT	PROJECT	FUND
<b>Health</b>		
Alzheimer's Australia Vic Inc	General purposes	Hopetoun Fund
Angel Flight Australia	General support	Wanless Family Fund
Anti Cancer Council of Victoria (Cancer Council Victoria)	Venture Grants Scheme: further research for year 3	Balandry (Peter Griffin Family) Fund
Arthritis Victoria	General support	Hopetoun Fund
Austin Health	Brain Tumour Support Service	John Cummins Memorial Fund (Extension)
Austin Health	MS Nurse Led Clinic at the Neuro-Immunology, Clinical Research, Education and Support Service	Slater & Gordon Community Fund
Australian Foundation for Peoples of Asia and the Pacific	Bairo Pite Clinic – ventilation system	Spend It Well Fund
Beyond Blue Limited	beyondblue Support Service	Abercrombys Charitable Fund
Beyond Blue Limited	Heads Up Knowledge Sharing Network	Abercrombys Charitable Fund
Black Dog Institute	Kurdiji 1.0	Vilde Family Fund
Breast Cancer Network Australia	Free Information Forums	New Idea Charitable Fund
Burnet Institute	General support	Hopetoun Fund
Cabrini Health	General support	Hopetoun Fund
CanTeen	General support	Henkell Family Fund
Cerebral Palsy Alliance	General purposes	Geostudies Fund
Fiona Stanley Hospital	Natasha Fisher	Slater & Gordon Health Projects and Research Fund
Florey Institute of Neuroscience and Mental Health	The Brains Trust	Hart Line Fund
Florey Institute of Neuroscience and Mental Health	ArrowSTRAIGHT Nitric Oxide Measurement System	Ralph & Betty Sims Fund
Health Issues Centre	Development of a health literacy program to improve health literacy of women from refugee backgrounds	Sally Oatley Memorial Fund
Huntington's WA (Inc.)	Active HEROs	Impact 100 WA
Independence Australia (Parquod Victoria)	General support	Ralph & Betty Sims Fund
Jesuit Social Services	App development	Heather Watkins Memorial Fund
John Fawcett Foundation	Operational support	Clare Murphy Fund
L2R	L2R	Hart Line Fund
Latitude	Wellbeing and mindfulness Workshop	Hobsons Bay Community Fund
LaTrobe University	Transition to Contemporary Parenthood Research Program	Coronella Fund
Little Wings Limited	Flight program	Slater & Gordon Community Fund
Lung Foundation Australia	Mesothelioma nurse course	Slater & Gordon Asbestos Research Fund

RECIPIENT	PROJECT	FUND
<b>Health</b>		
Mansfield Autism Statewide Services	Upgrade of computer systems	Mansfield Community Fund
Mary Potter Foundation Inc	Program support	Carreker Community Fund
McGrath Foundation Limited	General support	Williams Fund
Medecins Sans Frontieres Australia	Children in War Appeal	The Ripple Fund
M'Lop Tapang Organization	Drugs and Harm Reduction Program	Dorrie Alcock Memorial Fund
Monash Oncology Research Institute	Clinical study of individual patients undergoing video-assisted thoracoscopic surgery (VATS) for the management of malignant mesothelioma	Slater & Gordon Health Projects and Research Fund
Monash University	Final phase: screening tool for asylum seeker mental health	B B & A Miller Fund
Monash University	Production of a mouse model of paediatric brain tumours	Isabella and Marcus Paediatric Brainstem Tumour Fund
MOSH Australia Limited	Mobile MOSH	Impact 100 South Australia
Murdoch Childrens Research Institute	General support	Balandry (Peter Griffin Family) Fund
Murdoch Childrens Research Institute	Research into Genetic Conditions Program	N E Renton Bequest
National Stroke Foundation	General purposes	Baker Watson Fund
National Stroke Foundation	General purposes	Hopetoun Fund
Northern Sydney Local Health District	Spinal Cord Research	Slater & Gordon Health Projects and Research Fund
Odyssey House Victoria	General purposes	Hopetoun Fund
Operation Flinders Foundation Inc.	Peer Group Mentor Job Ready Training Program	Impact 100 South Australia
Pelvic Pain Foundation of Australia Limited	General purposes	Henkell Family Fund
Peter MacCallum Cancer Institute	General purposes	Hopetoun Fund
Peter MacCallum Cancer Institute	Clinical Study: Solving Unknown Primary Cancer (SUPER)	Tan Family Fund
Peter MacCallum Cancer Institute	Research into ovarian cancer	Tan Family Fund
Prahran Mission	Hearing Voices Program	Ralph & Betty Sims Fund
Royal Childrens Hospital	General support	Henkell Family Fund
Royal Flying Doctor Service of Australia	General purposes	Hopetoun Fund
Sane Australia	Larundel Psychiatric Hospital Book	Fairer Futures Fund
Sane Australia	Hocking Fellowship	Sally Oatley Memorial Fund
St Vincent's Hospital (Melbourne) Limited	St Vincent's Acute Nursing Service for Richmond's Aboriginal Community	EastWeb Fund
St Vincent's Hospital (Melbourne) Limited	Genetic analysis of mesothelioma	Slater & Gordon Health Projects and Research Fund
Summer Foundation	General purposes	Beecher Family Charitable Fund
Syndromes without a Name (S.W.A.N) Australia	General purposes	N E Renton Family Fund



RECIPIENT	PROJECT	FUND
<b>Health</b>		
Tabulam and Templer Homes for the Aged Inc	General support	Henkell Family Fund
The Alfred Hospital	To improve Cardiac Services. A gift in honour of Cardiologist Archer Broughton for his Birthday	Sally Browne Fund
The Alfred Hospital	Promote Sub Arachnoid Hemorrhage (SAH)	Slater & Gordon Health Projects and Research Fund
The Community Grocer	The Community Grocer Carlton: connecting communities to their food	Harner Family Fund
The Gawler Foundation Inc	Ten day Life and Living Program	Melanie Holden Memorial Sub Fund
Tongala & District Memorial Aged Care Service Inc	Koraleigh Up-grade Building Project	Grummitt Family Fund
University of Melbourne	Translation of research knowledge about infant emotional development	Anonymous
Very Special Kids	General support	Henkell Family Fund
Very Special Kids	General purposes	Hopetoun Fund
Victorian Aids Council	Kunghah Weekend Retreat	Assia Altman Fund
Vision Australia	General support	Hopetoun Fund
Weenthunga Health Network Inc	Bursary for Danika Dale	Anna Wearne Fund
Weenthunga Health Network Inc	Weenthunga Health Day	Towards a Just Society Fund
Women's Health Victoria	BreaCan Service Redevelopment	Breacan Fund
World Vision Australia	Clean Birthing Kits packing event	Clare Murphy Fund

RECIPIENT	PROJECT	FUND
<b>Human rights</b>		
Anglicare Australia	We Care Packs	New Idea Charitable Fund
Asylum Seekers Resource Centre	General support	Williams Fund
Australian Indigenous Governance Institute	Annamila – Australian Indigenous Governance Institute partnership	Annamila Fund
Cambodian Children's Fund	General support	Miller Fund
Children's Protection Society	Children's Centre Scholarship Fund	Beecher Family Charitable Fund
Cool Australia	Expansion support	Williams Fund
Diplomacy Training Program Limited	General purposes	Hart Line Fund
Elizabeth Morgan House Aboriginal Women's Services	Settled and Safe	Maude Hargrave Fund
First Step program ltd	First Step Legal	FGM Charitable Fund
Flemington and Kensington Community Legal Centre	Peer to peer outreach	Assia Altman Fund
Flemington and Kensington Community Legal Centre	Peer to peer outreach	Hart Line Fund
Flemington and Kensington Community Legal Centre	Peer to peer outreach program	Ronald and Mary Henderson Fund
FVPLS Victoria	3 year fundraiser position, 2nd year	B B & A Miller Fund
FVPLS Victoria	3 year fundraiser position, 2nd year	Beecher Family Charitable Fund
FVPLS Victoria	3 year fundraiser position, 2nd year	Towards a Just Society Fund
Gambina	General support	Williams Fund
Geelong One Fire Reconciliation Group	Djillong: Our History, Our Story, Our Future – strengthening local Aboriginal knowledge of history and culture	Towards a Just Society Fund
Human Rights Law Centre	The Refugee Rights Unit	Assia Altman Fund
Human Rights Law Centre	The Refugee Rights Unit	Beecher Family Charitable Fund
Human Rights Law Centre	The Refugee Rights Unit	Espero Fund
Human Rights Law Centre	The Refugee Rights Unit	Fairness Fund
Human Rights Law Centre	General purposes	Sunning Hill Fund
Human Rights Law Centre	General support	Williams Fund
Human Rights Watch Australia	General support	Beecher Family Charitable Fund
Human Rights Watch Australia	General support	Fairness Fund
Human Rights Watch Australia	General support	Hart Line Fund
International Detention Coalition	General support	Williams Fund
Interplast Australia and New Zealand	Eureka Climb Event	Dina Grollo Community Fund
National Children's Youth & Law Centre	TeachLaw for disadvantaged schools and students	Slater & Gordon Community Fund
Refugee Council of Australia	General purposes	Sunning Hill Fund
Refugee Legal	Temporary Protection Visa Clinics	Clack Family Memorial Fund
Refugee Legal	Temporary Protection Visa Clinics	Espero Fund

RECIPIENT	PROJECT	FUND
<b>Human rights</b>		
Refugee Legal	Temporary Protection Visa Clinics	Omi-Albers Fund
Road to Refuge	The Plight For Equality: Seeking Asylum and Being Queer	EastWeb Fund (Extension)
Save the Children Australia	Targeted campaign to resettle refugees on Manus and Nauru	Beecher Family Charitable Fund
SNAICC	Advocacy to secure amendments In the Jobs for Families Child Care Package	B B & A Miller Fund
SNAICC	Advocacy to secure amendments In the Jobs for Families Child Care Package	Beeton Family Fund
SNAICC	Advocacy to secure amendments In the Jobs for Families Child Care Package	Fairer Futures Fund
SNAICC	Advocacy to secure amendments In the Jobs for Families Child Care Package	Fairness Fund
SNAICC	Advocacy to secure amendments In the Jobs for Families Child Care Package	Raettvisa Fund
SNAICC	Advocacy to secure amendments In the Jobs for Families Child Care Package	Sunning Hill Fund
SNAICC	Advocacy to secure amendments In the Jobs for Families Child Care Package	Towards a Just Society Fund
Stand Up: Jewish Commitment to a better world	General purposes	Omi-Albers Fund
StreetSmart Australia	Bright Future Merri Outreach Project	Johnstone Gumption Fund
StreetSmart Australia	General support – Victoria	Paterson Family Fund
StreetSmart Australia	Cots for Tots	Pomegranate Fund
StreetSmart Australia	Justice Connect Homeless Law: Dollar Value	Pomegranate Fund
The Australia Institute	General support	Fairer Futures Fund
Victorian Foundation for Survivors of Torture Inc	Maths tutor for Mohammad Naqvi	Anna Wearne Fund
White Lion Incorporated	Eureka Climb event	Dina Grollo Community Fund
Women With Disabilities Victoria	Measuring our impact project and Women with disabilities as influential advocates project	Paterson Family Fund
Woor-Dungin	Operations Management Position 2017-2018	Alf & Meg Steel Fund
Woor-Dungin	Operations Management Position and associated expenses	B B & A Miller Fund
Woor-Dungin	Operations Management Position 2017-2018	Fairer Futures Fund
Woor-Dungin	General support	Fairer Futures Fund
Woor-Dungin	Criminal Record Discrimination Project	Williams Fund
YGAP	Polished Man	Ashworth Family Fund
YGAP	Polished Man	John and Eileen Clark Family Fund
Zonta House Refuge Association	Positive Pathways to Safety for Women and the Community	Slater & Gordon Community Fund

RECIPIENT	PROJECT	FUND
<b>Human services</b>		
Australian Red Cross Society	Health and Wellbeing of Children -	Mutual Trust Team Charitable Fund
Australian-German Welfare Society Inc	General support	Henkell Family Fund
Berry Street Victoria	Effective engagement with young people	Ballandry (Peter Griffin Family) Fund
Big Brothers-Big Sisters Australia	Start 100, 4 x memberships	Dennoch Fund
Brisbane Youth Service Inc	General purposes	Holding Redlich Social Justice Fund
Camp Lionheart Inc	Camp Lionheart	Slater & Gordon Community Fund
CatholicCare	Rose Gallagher Project: Living Skills Support Worker (wages and ongoing costs)	P J & J P Murphy Fund
Centre for Multicultural Youth	Welcome Football project	B B & A Miller Fund
Global Development Group	Casa Vida Minivan Purchase	Anonymous
HoMie	HoMie	Hart Line Fund
I Can Network	General purposes	Clemenger Staff Fund
Kids Own Publishing	General support	Scarlet's Fund
Kids Under Cover	General purposes	Dina Grollo Community Fund
Kids Under Cover	General support	FGM Charitable Fund
Kids Under Cover	General purposes	Nicholas R Taylor Fund
LaTrobe University	David Jolley Leadership Award	David Jolley Leadership Award
Launch Housing	General purposes	Juno Fund
Launch Housing	Promoting Pathways Program at the Elizabeth St Hub of Common Ground	Zalewski Fund
Lentara UnitingCare	Accommodation and Childcare for Asylum Seeker Women and Families	Wealth Mentoring Group Fund
Lighthouse Foundation	People at Risk	Mutual Trust Team Charitable Fund
Lighthouse Foundation	General support	Wanless Family Fund
Martin Luther Homes Boronia Inc	General support	Henkell Family Fund
Prahran Mission	General purposes	Hopetoun Fund
Road Trauma Support Services Victoria	Website upgrade	Slater & Gordon Community Fund
Rotary Australia Overseas Aid Fund	Batukuseni Medical Clinic, Bali, Indonesia	The Ripple Fund
Salvation Army Southern Territory Social Work	General purposes	Hopetoun Fund
Save the Children Australia	General support	Beecher Family Charitable Fund
Save the Children Australia	Syrian Appeal	Unico Community Fund
Scripture Union Victoria	General support	Ralph & Betty Sims Fund
Seeing Eye Dogs Australia	Contribution to the building of the new dog training complex	Dennoch Fund
SNAICC	General purposes	Nicholas R Taylor Fund
St Vincent De Paul Society Victoria Inc	Hames House Refuge Project	Mansfield Community Fund
StreetSmart Australia	"WISHIN: Making a House a Home	Alf & Meg Steel Fund
StreetSmart Australia	Elizabeth Morgan House: Kids Need to Play	Alf & Meg Steel Fund

RECIPIENT	PROJECT	FUND
<b>Human services</b>		
StreetSmart Australia	ASRC Housing program	B B & A Miller Fund
StreetSmart Australia	Fitted for Work: Female Offenders Ready to Work Program	B B & A Miller Fund
StreetSmart Australia	Housing for the Aged Action Group: Home at Last	Ballandry (Peter Griffin Family) Fund
The Big Issue	Women's Subscription Enterprise	Dina Grollo Community Fund
Travellers Aid Australia	General support	Maude Hargrave Fund
UNICEF Australia	UNICEF Four Famines Appeal	Dorrie Alcock Memorial Fund
West Welcome Wagon	Welcome Warmth Fabric Bags	Hobsons Bay Community Fund
White Lion Incorporated	This is a grant from Sally Browne Fund for general support	Sally Browne Fund
Williamstown Community and Education Centre	'Welcome to Australia' – Helping migrants to engage and reduce their isolation	Slater & Gordon Community Fund
Youth Off The Streets Limited	Don Bosco Youth Refuge	Holding Redlich Social Justice Fund

RECIPIENT	PROJECT	FUND
<b>Other</b>		
Centre for Policy Development Ltd	General purposes	Curlew Fund
Country Fire Authority	Woods Point Fire Brigade: purchase and fitout of a GPS system into their fire truck	Mansfield Community Fund
Football Integration Development Association	Develop and promote a junior football league for children with a disability	Slater & Gordon Community Fund
Gippsland Asbestos Related Diseases Support Inc	Travel grant to attend Asbestos Safety and Eradication Agency International Conference	Slater & Gordon Asbestos Research Fund
Mudgeeraba Special School	Purchase of two interactive LED TV panels	Slater & Gordon Community Fund
Rotary Australia Overseas Aid Fund	LHA Education + Development Program, Siem Reap, Cambodia	John and Eileen Clark Family Fund
Royal Botanic Gardens Melbourne	Directors Circle	Sally Browne Fund
Singing Kites	Singing Kites: General purposes	Davie Family Fund
Wheeler Centre	Conversation Starter	Beecher Family Charitable Fund

# SUB-FUNDS 2016/17

FUND	SPECIAL INTEREST
A Peace of the Pie	Arts & culture, health & medical research, and environment & conservation.
Abbotsford Convent Fund	Arts, cultural and charitable purposes.
Abercromby's Charitable Fund	Community services & support and health & medical research.
Aboriginal Student Bursaries Fund	Indigenous student bursaries.
Agnes Robertson Fund	Aged care, medical research, the arts and education.
Alf & Meg Steel Fund	Health and medical related causes, especially for the aged. Children both in Australia and overseas, gardening, the environment and Indigenous Australians.
Alice Sloan Fund	To provide financial and in-kind support as well as encouragement to enable young people to participate in varied pursuits, including sport, dance, music, art and outdoor education.
Alison Patrick Memorial Fund	To support graduate historical research in the broad area of French revolutionary history and projects which focus on environmental issues.
Allaway Lancashire Fund	Support for social justice, ethical and environmental education and protection of cultural and natural heritage.
AMCS Charitable Fund & Extension Fund	Australian Multicultural Community Services (AMCS) is a not for profit organisation providing help at home and other support services to older people and their carers in Melbourne and Greater Geelong.
Anna Wearne Fund	To create opportunities for young people to reach their potential, where such potential is hampered due to disadvantage. The objectives of the sub-fund concern education, indigenous people, leadership and women's rights.
Antoinette and John Richardson Memorial Fund	Specific organisations, including Swinburne University, Victorian College of the Arts and St Francis Choir.
Apollo Fund	Education and profound hearing loss
APT Conservation And Charitable Fund	To support processes, events and activities that resolve problems to make a positive and measurable difference to selected causes.
Ardoch Future Fund	Making education a reality for young people, including those experiencing homelessness and disadvantage.
Ashworth Family Fund	Medical research
Assia Altman Fund	Focus on International development, LGBT organisations and projects, asylum seekers and refugees, animal rights and social entrepreneurship.
Australian Childrens Education Fund	Children's education.
Australian Disability and Indigenous Peoples' Education Fund (ADIPEF)	To support opportunities for lifelong learning for people with disabilities from Indigenous and non-indigenous backgrounds, from pre-primary to post tertiary.
Australian Indigenous Persons Initiatives Fund	Indigenous issues
Australian Learning Lecture	The Koshland Innovation Fund supports initiatives to contribute to learning, democracy, and ideas.
Avalon Circle	Mental illness, disability (intellectual, physical, sensory), homelessness, drug and alcohol dependency and victims of abuse.
B B & A Miller Fund	Aboriginal education and health, disability, education, environment, medical research, mental health, youth suicide, drugs and addictions, disadvantage, developing countries and humanitarian crises.
Baird Family Fund	Meeting the needs of the intellectually disabled and their families.
Baker Watson Fund	Sane Australia, Guide Dogs and homelessness
Ballandry (Peter Griffin Family) Fund	General charitable purposes.
Beecher Family Charitable Fund	General charitable purposes.
Beeton Family Fund	General charitable purposes.

FUND	SPECIAL INTEREST
Bell Family Fund	Social justice, animal welfare and medical research.
Berry Fund	General charitable purposes.
Betty Fulton Fund	To assist families and individuals to pursue educational opportunities that they may not have had the chance to because of disadvantage. This may include primary, secondary, tertiary and vocational education.
Beyond Me	To support young people to make a difference for others in the community.
BFG Charitable Account	General charitable purposes including the advancement of disadvantaged individuals and communities.
Breacan Fund	Promoting, advocating for and supporting women's health in Victoria.
Bridging Opportunities	General charitable purposes, with a particular passion for projects that work with, support and empower asylum seekers, refugees and women.
Carreker Community Fund	General charitable purposes.
Charles D'Aprano Award Fund	To provide funding for an annual scholarship awarded through Swinburne University of Technology to a student who wishes to extend and further their Italian related studies in Italy.
Charles David Fund	Social equity and holocaust studies.
Chaskett Fund	Support for rare book purchases for Melbourne libraries, especially the State Library of Victoria and support for bibliographical scholarship.
Cherie Millar Education Fund	Education, the arts and health in the LaTrobe Valley region
Clack Family Memorial Fund	General charitable purposes with focus on innovative programs in media and the arts, with particular emphasis on disadvantaged groups and rural and regional communities.
Clare Murphy Fund	Empowering women and children in SE Asia and South Pacific, international emergency relief, refugee support.
Clemenger Staff Fund	Each state office has a different focus for grantmaking, from young people at risk to literacy and capacity development.
Clive St	General charitable purposes.
Connie & Craig Kimberley Fund	General charitable purposes.
Curlew Fund	Conservation and indigenous conservation issues.
Dahkota Fund	General charitable purposes
David Boykett Tall Ships Voyaging Fund	To develop life and leadership skills for Australian youth through the experience of voyages on tall ships.
David Jolley Leadership Award	To acknowledge and promote excellence and leadership in human services with a focus on tertiary social work education at La Trobe University across metropolitan and regional Victoria.
Davie Family Fund	Arts & culture, education, training & employment, disability, environment & conservation
DDJE Fund	General charitable purpose with interest in education.
Demeter Legacy Fund	General charitable purposes.
Dennoch Fund	Empower communities e.g. by supporting social enterprises Bridge potential divides such as religion, culture, distance, age, etc Lead to an improvement in the quality of life for individuals who are impeded from living a contributory life without financial assistance Encourage the development of skills in the arts
Digger & Shirley Martin Environment Fund	Environment & conservation.
Dina Grollo Community Fund	Youth education, employment and homelessness in the areas in which Grocon works.
DISCAL Fund	Disability and community advocacy.



FUND	SPECIAL INTEREST
Dominic & Anne Gallace Family Fund	General charitable purposes.
Dominic Gianni Fund	To enhance the lives of children with a disability.
Dominica Whelan Endowment	Women & social justice.
Dorrie Alcock Memorial Fund	The fund is committed to the welfare and education of young children around the world, especially those who are disadvantaged by the effects of conflict and systemic poverty.
Dubsky Family Fund	Overseas aid, disadvantaged youth, education, the elderly and the arts.
Durrabool Fund	General charitable purposes.
Eastern Health Charitable Fund	General charitable purposes with particular emphasis on the alcohol and drug sector.
EastWeb Fund & Extension Fund	General charitable purposes.
Elizabeth Egelston Fund	Aboriginal law issues.
EM Horton Family Fund	Education and community wellbeing, with a focus on skills development; sustainability and the environment; support for Jewish organisations within Australia.
Enviro Warriors	Environmental projects and education within Australia and in developing countries. Projects focusing on indigenous cultures and their ecological knowledge.
Equal Access Fund	General charitable purposes, in particular improving literacy for Australians as a means of addressing systemic and intergenerational disadvantage.
Espero Fund	To improve society in a small way by supporting a number of charitable causes, in particular programs which focus of community advocacy, overseas development, improving educational opportunities and medical research.
Eve & Bill Chandler Fund	General charitable purposes.
Fairer Futures Fund	Indigenous affairs, disadvantaged women, development in Australia and overseas, environment, education and a good start for disadvantaged groups.
Fairness Fund	Projects supporting education and employment, particularly for indigenous youth and women.
Family Life Futures for Children Fund	To support Family Life programs and activities.
Farrall and Nolan Family Account	General charitable purposes.
Fellowship for Indigenous Leadership Fund	Indigenous leadership and associated areas.
FGM Charitable Fund	General charitable purposes.
Fiona Shields Fund	Community services & welfare, community development & advocacy, environment & conservation, overseas aid & development. Targeting children/young people, women, indigenous, refugees & asylum seekers
Geddes Nairn Development Fund	Capacity building for development partnerships in China, microfinance capacity building, refugee support especially in Australia, Oxfam Australia projects, especially in relation to China.
Geostudies Fund	General charitable purposes, with interest in the environment.
Gerard Patrick Lonergan Scholarship Fund	General charitable purposes.
Global Gardens of Peace	To support the vision of Global Gardens of Peace, to create peaceful, safe and serene environments where children and their families can come together to play, rest, heal and interact.
Global Leadership Fund & Extensions Fund	To develop leadership within communities.
Goulburn Valley Medical Workforce Fund	Health scholarships in the Goulburn Valley area.
Graduate Women Victoria	Scholarship fund for women in tertiary education in Victoria and scholarships for women undertaking masters and doctoral studies.
Graduate Women Victoria Donors Fund	Scholarship fund for women in tertiary education in Victoria and scholarships for women undertaking masters and doctoral studies.

FUND	SPECIAL INTEREST
Greg Larsen Family Fund	Education to the disadvantaged in overseas countries and homelessness in Melbourne.
Grieve Family Fund	Social justice, especially with children, and environmental issues.
Grigg Family Fund	Education, health, the environment and social justice, with a focus on homeless people, refugees, Indigenous Australians, women and families.
Grummitt Family Fund	Cancer, heart disease, aged care and health facilities. Community causes, education facilities and a special interest in needs within the Goulburn Valley.
Guddaa Fund	General charitable purposes.
Harmer Family Fund	Focus on the performing arts, especially music, innovation in care for the environment, opportunities for talented young people and projects that forward good government in Australia.
Hart Line Fund	General charitable purposes, principally in the areas of education, the arts, human rights and the environment.
Hazel Rowley Literary Fund	Biographers, writers, lectures / presenters on writing experiences.
Heather Watkins Memorial Fund	To assist families, especially those with young and teenage children, affected by suicide. In particular, support for the Jesuit Social Services Support after Suicide program.
Henkell Family Fund & Henkell Family Fund 2	Emphasis on the vocal arts, in particular opera, as well as supporting the German-Australian community.
Henry Stein Fund	Projects which increase access to and participation in the community by adults with autism, intellectual or profound disabilities. Priority given to women, Indigenous people and those from a culturally and linguistic diversity background.
Herbert and Inge Littauer Fund	Refugees, aged care, language and resettlement projects, health and cancer research and support, innovation and entrepreneurship, theatre, arts and music, Jewish community support and language and learning.
Hilary Dixon And John Dempster	General charitable purposes.
Hobsons Bay Community Fund & Extension Fund	General charitable purposes within Hobson's Bay municipality.
Holding Redlich Social Justice Fund	General charitable purposes.
Homework Club Partnership Fund & Extension Fund	General charitable purposes.
Hopetoun Fund	General charitable purposes.
Howard McGeary Charitable Fund	Support for adults and children with physical and intellectual disabilities; the homeless and disadvantaged in the community. Care and protection of the environment/conservation and animals.
Impact 100 South Australia	General charitable purposes.
Impact 100 Sydney North	General charitable purposes.
Impact 100 Tasmania	General charitable purposes.
Impact 100 WA	To make high impact grants to charitable causes in WA.
Initiate Action Community Fund & Extension Fund	Education, girls and women in Melbourne's western suburbs.
Isabella and Marcus Paediatric Brainstem Tumour Fund	Research into paediatric brainstem tumours with a focus on Diffuse Intrinsic Pontine Glioma
James Family Fund	Early childhood, youth at risk, homelessness, international poverty and aid.
Jared Dunscombe Fund	Youth and Health
Jean Vincent Fund	General charitable purposes.
John and Eileen Clark Family Fund	General charitable purposes.

FUND	SPECIAL INTEREST
John Cummins Memorial Fund & Extension Fund	Support for people with brain tumour linked to Austin Health, educational opportunities for young people experiencing disadvantage and other related social justice programs.
Johnstone Gumption Fund	Environment, open spaces, regional botanical gardens. Projects that support citizenship and community. Health and quality outcomes for patients.
Joy Mavis Schwartz-Seidler Musical Scholarship	Musical scholarship to students from Glossop High School in South Australia who have 1-2 year formal training and show musical growth potential.
Juliet Allen Fund	Projects that support women and children through health and education, sustain the environment or prevent international poverty or ill-health.
Juno Fund	General charitable purposes.
Kaplan Dascalu Fund	Shaping a just and compassionate society through supporting vulnerable people on the basis of family violence, homelessness, cultural identity, and enabling a more sustainable social services sector.
Katrina's Sparkle Fund	Safety and wellbeing of children and babies, social justice and fairness, family harmony and cohesion, educational opportunities for young people to maximise their potential especially through travel, and health issues.
Keith & Jeannette Ince Fund	Environment and threatened species, education for disadvantaged children, assisting indigenous communities and early childhood development.
Kinder Charitable Fund	General charitable purposes.
Kirkham Family Fund	Music and theatre, with emphasis on young artists and small theatre companies, and the environment and animal welfare.
Kokopelli Knights	To bring joy to children with life threatening diseases who need inspiration and happiness.
Koshland Innovation Fund & Extension Fund	The Koshland Innovation Fund supports initiatives to contribute to learning, democracy, and ideas.
Kristian Fredrikson Scholarship	Scholarship to support career development for arts/theatrical design makers.
KSR Accommodation Scholarship Fund	General charitable purposes.
Leosia	To support grassroots and holistic Indigenous organisations that focus on empowerment and self-determination. The sub-fund aims to support programs that provide meaningful and sustainable training, education and employment pathways for Indigenous peoples.
Lois Bryson	To promote human rights through projects that address injustice and inequity between groups of people. Preference should be given to organizations less likely to be supported by governments and through politically conservative philanthropic initiatives.
M & L Attwood Fund	General charitable purposes.
Macmar Fund	Supporting primary school education opportunities
Malcolm Broomhead	General charitable purposes.
Mansfield Community Fund	For the support and development of the Mansfield Community and surrounds.
Maramingo Fund	General charitable purposes.
Mary Perrottet Fund	General charitable purposes.
Maude Hargrave Fund	Community services and welfare, Health and medical research.
Mayer Morris Family Fund	Aboriginal Australians, refugees living in Australia and residents of Timor Leste.
McGregor Family Fund	General charitable purposes with an emphasis on education for the disadvantaged.
Melanie Holden Memorial Sub Fund	To financially assist a young cancer sufferer's attendance at the Gawler Foundation.
Melbourne Writers Festival Fund	Encouraging all Victorians to read and to participate in the literary arts, through a socially and culturally inclusive festival that includes Australia's biggest literature event for schoolchildren
Melliodora Fund	Ecological sustainability, environmental advocacy and nature conservation.

FUND	SPECIAL INTEREST
Metta Fund	General charitable purposes.
Miette Skiller Scholarship Fund	Research into paediatric brainstem tumours with a focus on Diffuse Intrinsic Pontine Glioma
Miller Fund	General charitable purposes.
Misericordiae	General charitable purposes.
Muna Rahman	General charitable purposes.
N E Renton Bequest	Mental health & children.
N E Renton Family Fund	General charitable purposes.
Nash Family Fund	General charitable purposes.
NICHE	General charitable purposes.
Nicholas R Taylor Fund	Environment and conservation, Community development, indigenous education, disability.
O'Nibbs Gumnut	General charitable purposes.
Omi-Albers Fund	General charitable purposes.
Palliative Care Victoria	General charitable purposes.
Paterson Family Fund	Assistance to small groups without a voice, particularly people with disabilities.
Phyllis Budd Fund	Support for a second and third year apprentice chefs who might be disadvantaged through financial or family circumstances.
Pine Grove	General charitable purposes.
Pitcher Partners Charitable Fund	General Charitable Purposes
Pomegranate Fund	Health, education and community development.
Quercus Fund	To support a variety of community initiatives.
Quinten Curry Tribute	General charitable purposes.
Raettvisa Fund	General charitable purposes.
Ralph & Betty Sims Fund	To support a range of charitable organisations focussing on medical research, mental health, Aboriginal well being and Christian welfare.
Rana and Alan Fund	Overseas aid, especially in helping communities become self sufficient. The environment, Indigenous programs, refugees, health and human rights.
Renner Family Fund	General charitable purposes.
Ridgeway Fund	Overseas aid & development, women and girls and community support.
rmg Account	To support environmental sustainability and environmental education.
RO Fund	General charitable purposes.
Rod and Pamela Wells Community Fund	General charitable purposes.
Ron Castan Education Fund	Aboriginal law issues.
Ronald and Mary Henderson Fund	Socio-economic research to tackle poverty Australia wide, particularly in Melbourne and rural areas. Refugee and asylum seekers, settlement issues and support, social inclusion, co funding and partnerships with other funders.
Running Waters Fund	Urban ecological sustainability, social justice and nature conservation, particularly through advocacy and community development.
Sally Browne Fund	Melbourne's Royal Botanic Gardens, the School of Botany at Melbourne University and motor neurone disease.

FUND	SPECIAL INTEREST
Sally Isaac Memorial Scholarship Fund	To create educational opportunities for young women aged 35 or younger who make a significant contribution to the community in fields of local government, social justice, aboriginal affairs (including reconciliation) arts and music, community health, CALD
Sally Oatley Memorial Fund	To support initiatives in charitable areas, in mental health services, research, education and training, with emphasis on young people and families.
Scarlet's Fund	Creative projects in developing communities, focussing on children and young people
Semaphore Fund	General charitable purposes.
Silver Gold Fund	General charitable purposes, in particular education and the combating of disadvantage with preference for granting to smaller organisations.
Slater & Gordon Community Fund	General charitable purposes, to include social research, advocacy for disenfranchised persons with an emphasis on social justice.
Slater & Gordon Asbestos Research Fund	To fund and support medical research to find a cure for asbestos related disease, particularly mesothelioma. To support the sharing of information amongst health professionals with respect to the prevention, treatment of asbestos related diseases.
Social Justice Fund	To contribute to the promotion of social and economic justice in Australia and in the developing countries of Africa, Asia, Latin America and the Pacific.
South Eastern Primary Care Fund	General charitable purposes.
Southern General Practice Education Fund	General charitable purposes.
Spend It Well Fund	Projects in East Timor such as building schools to assist rebuild the nation's education infrastructure.
St Mark's Anglican Church Fitzroy Choral Scholarship Fund	To encourage and support the practice, performance and development of sacred choral music at St Marks Anglican Church, Fitzroy, through the granting of one or more annual scholarships for St Mark's Anglican Church Fitzroy Choral Scholars.
Steve Lawrence Social Innovation Fund & Extension Fund	To support the creation of new services in Australia that enable citizens and organisations to better solve social problems.
Story Street Fund	The Story Street sub-fund seeks to make a real difference through its giving, by focussing on the effectiveness and impact of the grants it makes to both local and international organisations. Local granting will be directed to causes which have a real impact on community welfare such as homelessness in Melbourne, refugee welfare and school relief for disadvantaged students. At an international level, the focus is on supporting organisations providing emergency relief in crisis situations, as well as organisations working towards improving longer term health and educational outcomes for disadvantaged communities in developing countries.
Stubbs and White Charitable Fund	MS, Cerebral Palsy, Disadvantaged in Melbourne CBD
Sunning Hill Fund	To enhance education and training opportunities for Aboriginal people in the Northern Territory and Kimberley.
Sunshine and Crocodile Fund	General charitable purposes but with particular interest in indigenous communities and capacity building projects in Sri Lanka
Sylvia Fisher Fund	An extended study bursary awarded to a singer for professional development.
Tan Family Fund	Aboriginal issues and advocacy.
Tass Nyungar Fund	General charitable purposes.
Team Miller	General charitable purposes.
The Andrew Plain Memorial Fund	General charitable purposes.
The Clements Fund	To support the Gawler Foundation's "Life for Living" program and the renal cell carcinoma research program at the Austin Hospital.
The Giving Well	General charitable purposes.
The Ngaruk Fund	General charitable purposes.

FUND	SPECIAL INTEREST
The Ripple Fund	Arts & Culture, Community services & welfare, health & medical research, Community development & advocacy, Environment & conservation, Overseas aid & development
The Robison Fund	Charitable purposes and in particular education and combating disadvantage. May include the provision of music programs for the disadvantaged in schools or the general community.
The TAP Fund	Education, training and employment, Disability
THLOW	General charitable purposes.
Thu Giang Nguyen Fund	An annual science prize to a student at Melbourne Girls College and a scholarship to an indigenous student in the Goulburn Valley.
Tony Adams Fund & Tony Adams Extension Fund	To continue the work of Professor Tony Adams in international education by supporting activities in the areas of research, professional development and student mobility.
Towards a Just Society Fund & Towards a Just Society Extension Fund	To assist in the reduction of current injustices affecting particular groups and individuals, currently with emphasis on Indigenous education/capacity building.
Trikojus Education Fund	Scholarships to disadvantaged & gifted children in government schools.
Two Cents Fund	General charitable purposes.
Unico Community Fund	Education, training & employment.
vandm	Education, training & employment.
Vanraay Family Fund	Supporting equality and justice in the community, and projects that assist in initiating change so that people can help themselves. .
Vicki Standish Family Fund	To support the well being of children and young people and to assist them to reach their potential.
Vilde Family Fund	Environment and animal welfare issues
Walker Wayland Australasia Fund	General charitable purposes.
Wanless Family Fund	General charitable purposes.
Wealth Mentoring Group Fund	General charitable purposes
Westgate Health Charitable Fund	Promoting, advocating for and supporting women's health in Victoria.
Will & Lucy Martin Fund	General charitable purposes.
Williams Fund	Programs which promote social justice, Aboriginal reconciliation, and sustainability of the environment, both in Australia and overseas. Focus on education and employment for disadvantaged, affordable housing, environment and breast cancer.
With One Seed	Supporting subsistence communities in Timor Leste to make environments sustainable, to end poverty and hunger, to deliver universal education and to create global partnerships.
Women's Health Victoria Fund	Promoting, advocating for and supporting women's health in Victoria.
Zalewski Fund	Issues of homelessness, mental illness, human rights and post correction support, particularly impacting on women and young people.

# GUMNUT ACCOUNTS 2016/17

Amos Family Account	McMillan Family Fund
Annie's Wish	MOGGS
Barry Prior Humanitarian Fund	Mundy-Westall 'Moment-in-Time' Fund
Better Tomorrow Fund	Parsons and Nathan Gumnut
Brockman-Munn Fund (The)	Pathfinders Research Fund
Century 22 Fund	Reve Fund
Clarence Community Fund	S R Marzano Community Fund
Clay Gardner Charitable Fund	Smith and Carrick Family
Demeter Legacy Fund	Stan Willis Fund
Four Eleven Seven	Stanley Family Fund
Gumnut One	Strachan Clan Seil Fund
Helen Richardson Fund	T.H.F. Fund
Katarina Persic & Dominic Gleeson	Tango
Kimberley Youth Fund	The Freetown Fund
Krils Fund	The Lana Wilson Memorial Fund
Kylee Farrell Lung Fund	The Orchards Fund
League of Social Praxis	Thompson-Lobb Family Fund
M L Jones	Trej Li-Goh
Macston Social Endeavour	Woolley Family Gumnut
Mary & David Fund	



Fitzroy Town Hall  
201 Napier St  
Fitzroy VIC, 3065  
03 9412 0412  
[admin@communityfoundation.org.au](mailto:admin@communityfoundation.org.au)  
[communityfoundation.org.au](http://communityfoundation.org.au)

*This has been printed on recycled paper with CO2 Savings of 276kgs.*