

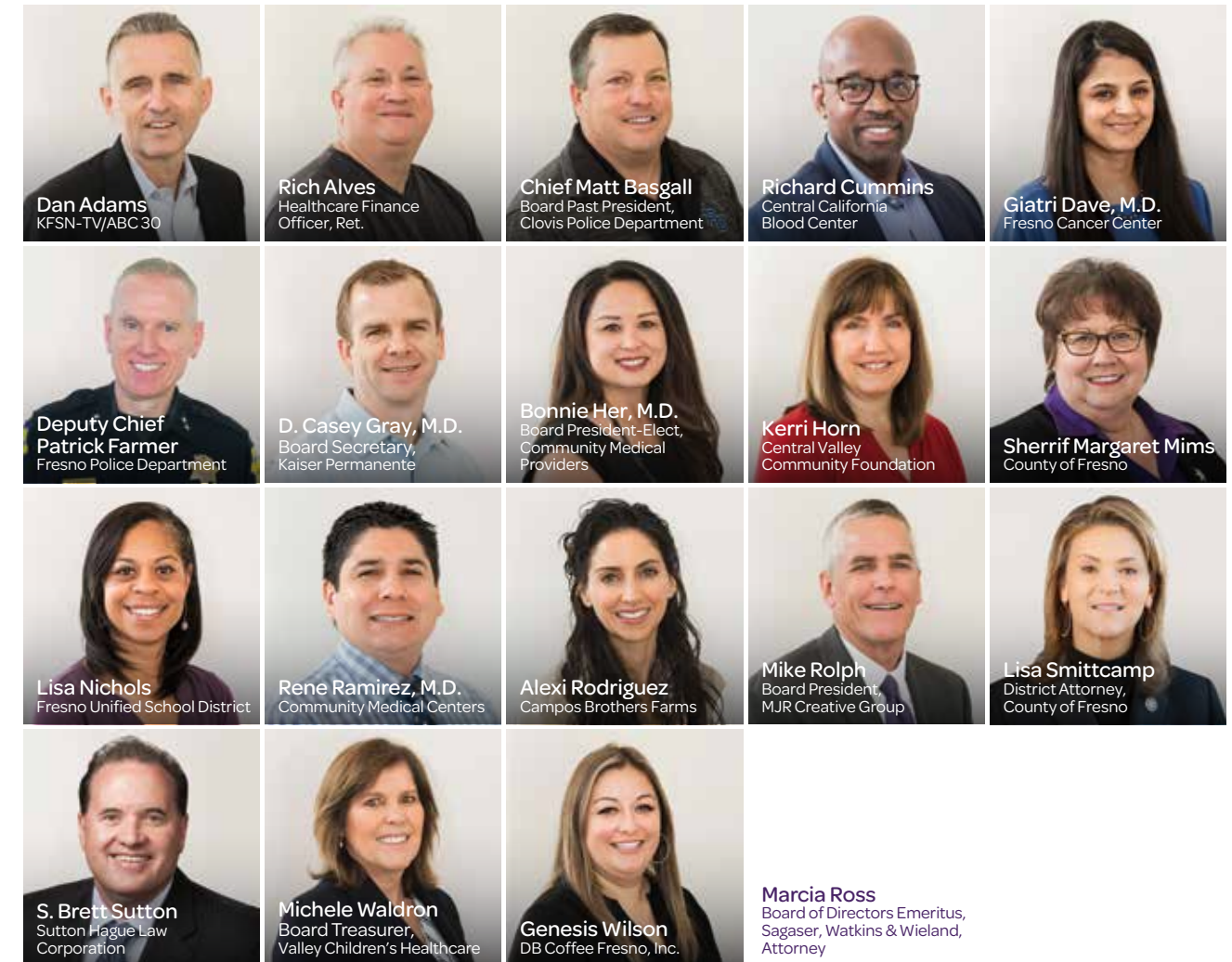


YEARS OF HOPE
AND HEALING

OUR
mission

Marjaree Mason Center supports and empowers adults and children affected by domestic violence, while striving to prevent and end the cycle of abuse through education and advocacy.

BOARD OF DIRECTORS



LEADERSHIP TEAM

- | | |
|------------------------------------------------------|-------------------------------------------------------------------------|
| Nicole Linder
Executive Director | Scott Loewen
Director of Facilities |
| Leticia Campos
Director of Client Services | Marcus Martin
Director of Finance |
| Jeff Esraelian
Director of Human Resources | Mary Shamshoian
Director of Clinical Services |
| Stacy Gomez
Director of Legal Services | Charity Susnick
Director of Development
and Communications |



40 YEARS OF
transformation

When Marjaree Mason Center opened on January 1, 1979 as part of the YWCA, 15 beds were available for women and their children fleeing domestic violence. The average stay was seven days and the annual budget was approximately \$225,000.

While much has changed in 40 years, the need for safe housing and comprehensive services for families fleeing domestic violence unfortunately has not. Today, Marjaree Mason Center has a total of 156 beds in two safe houses and continues to remain at or above capacity. Last year, Marjaree Mason Center provided more than 56,000 nights of safe housing to adults and their children.

Your investment in our programs and services such as legal support, counseling, education and prevention has an extraordinary impact on each man, woman and child who comes in contact with Marjaree Mason Center. Your financial contributions meet the critical needs of the more than 6,000 individuals we serve annually.

It is an incredible honor to share this report in salute of your partnership to help us create a community free of domestic violence. Thank you for your continued generosity!

With a grateful heart,

Nicole
NICOLE LINDER

WORKING
TOGETHER
FOR A COMMUNITY

Free OF DOMESTIC VIOLENCE

GOAL 1



CRISIS INTERVENTION SERVICES

Provide emergency services that effectively meet the crisis intervention and safety needs of adults and children experiencing domestic violence.

OBJECTIVES

- ✓ Strategically increase victims' crisis access and entry points to domestic violence services geographically throughout Fresno County.
- ✓ Develop and execute a plan to provide uninterrupted crisis intervention services 24/7/365.
- ✓ Develop a culturally diverse referral base and culturally appropriate access to emergency services in Fresno County.
- ✓ Enhance services to reduce/eliminate barriers to access.

GOAL 4



ORGANIZATIONAL QUALITY AND IMPACT

Establish and maintain the human, physical and technological infrastructure necessary to promote optimal efficiency and productivity of the agency.

OBJECTIVES

- ✓ Implement a Quality Review Plan incorporating data collection to ensure optimal program operations and evaluate and achieve annual metrics each year after:
 - To meet current and future needs of clients.
 - Implement a comprehensive staff training plan to meet service delivery essentials.
 - Ensure contract compliance and funding accountability.
 - To provide transparency in service goal attainment for stakeholders and clients.
- ✓ Complete a wage/benefits analysis to maintain area competitiveness that will be annually reviewed and adjusted as necessary.
- ✓ Establish a professional development and succession plan that increases staff attraction and retention, and decreases agency risk.
- ✓ Identify and implement a plan of technological infrastructure to promote agency connectivity and safety.
- ✓ Provide a welcoming environment and ensure Marjaree Mason Center facilities are accessible, promote efficiency and staff safety, and reduce agency risk.

GOAL 2



TRANSITIONAL, LONG-TERM AND COLLABORATIVE SERVICES

Promote ongoing safety and stability of adults and children impacted by domestic violence, and reduce occurrences of domestic violence, through direct services and strategic collaborations designed to address multifaceted needs of survivors.

OBJECTIVES

- ✓ Develop a collaborative approach to ensure clients have access to safe housing.
- ✓ Increase culturally responsive care through partnership and linkages, thereby increasing access to the diverse populations in Fresno County.
- ✓ Enhanced community based services to non-residential clients.
- ✓ Implement service interventions designed for whole families.

GOAL 3



COMMUNITY AWARENESS, EDUCATION AND TRAINING

Lead the region in education and training to increase awareness, recognition, and community response to domestic violence, and to strengthen the intervention strategies and capacities of our neighboring and partnering agencies.

OBJECTIVES

- ✓ Incorporate awareness of domestic violence risk, impact, interventions and services into standard mainstream community activities and culturally diverse settings and organizations.
- ✓ Promote early intervention through increased delivery of a healthy lifestyles curriculum.
- ✓ Develop and execute a plan for Marjaree Mason Center to assist partner agencies in building their capacity to assist survivors of domestic violence directly or through referrals.
- ✓ Explore and develop partnerships to increase the delivery of adolescent dating violence prevention education and activities that promote healthy relationships.

GOAL 5



FINANCIAL HEALTH AND STABILITY

Develop and execute a financial plan that supports the long-term financial health and stability of Marjaree Mason Center's ability to sustain its mission and goals.

OBJECTIVES

- ✓ Develop a 5-year operating and capital financial forecast with Board approved and adopted financial metrics and achieve annual metrics each year after.
- ✓ Develop an endowment to provide permanent supportive resources for the agency operations with a minimum balance of \$250,000.
- ✓ Develop and implement a fund development and stewardship plan to meet agency approved financial metrics.



OUR

Programs

-  CRISIS SUPPORT
-  SAFE HOUSING
-  COUNSELING
-  CHILDREN'S ENRICHMENT
-  LEGAL ASSISTANCE
-  EDUCATION & TRAINING

CRISIS SUPPORT

24-Hour Crisis Intake

Victims of domestic violence seeking safe housing and/or services can drop by the Marjaree Mason Center Administration Building, at 1600 M Street, or call the hotline at (559) 233-HELP (4357) 24-hours a day, 7 days a week. All hotline and in-person services are confidential and safe to individuals seeking support, help and information.

Safety Planning

During any crisis hotline call, any crisis walk-in, or interaction with our legal advocates, victims of domestic violence can work with Marjaree Mason Center staff to develop a safety plan. Staff offer tips to clients to help keep them safe during a potentially violent situation.

\$10,700

for a family of 3 to receive crisis services and safe housing for 30 nights.

\$119

average cost per person for one night of shelter and services.



156

beds at two
safe houses.

56,000

nights of safe housing
provided to adults
and their children.

CREATING A

safe
place



SAFE HOUSING

The Marjaree Mason Center operates two confidentially located safe houses in Fresno County. MMC ensures that victims of domestic violence, male or female, are provided a safe place to reside while their safety needs are addressed. During this time, MMC provides the support needed to return to the community safely. Marjaree Mason Center Safe Houses ensure that each family has its own private room so families are not separated during their stay.

All MMC Safe Houses feature large, communal kitchens, living rooms and play areas for children. Families with children receive assistance in school-services coordination, positive play strategies, respite and parenting classes.

Clients are not allowed to bring pets with them, however, MMC has a partnership called S.H.A.R.P. (Safe Haven for At-Risk Pets) with the Central California Animal Disaster Team which provides temporary assistance for pets of clients.

Case Management and Residential Client Advocates

- Assist families in accessing needed "safe" long-term housing, available resources, social and victim services
- Support clients in overcoming barriers in their efforts toward living in a domestic violence free environment
- Offer peer counseling and help clients develop a plan to promote their family's safety once they return to the community
- Transport clients to appointments, including court

Groups and Classes

- Life-skills
- Parenting
- Expressions Through Art group activities
- Enrichment Center activities
- Job search/interview preparedness and educational support
- Yoga and other wellness activities

Non-Residential Housing

For survivors who have experienced significant trauma and those whose lifestyle and financial choices have been controlled by someone else, a 30-90 day stay in our MMC emergency program is not long enough.

Through our rapid rehousing programs, we are able to use government resources to place clients in their own family unit for up to 24 months. These programs pay for a case manager to help them secure outside housing, reimbursement to MMC for rental payments and on-going supportive services.

These programs are a key linkage to help individuals and families gain long-term household health and not just a temporary escape from an unsafe situation.

FOR EVERY FAMILY

REFLECTIONS *Finding Freedom*

“ I am a strong, beautiful, smart, funny, caring, giving and now financially independent woman, thanks to the Marjaree Mason Center.

Eight months ago, I left my abuser of 18 years. I went to my local domestic violence shelter, however, on the seventh day, the case manager asked me if I would consider going to a different shelter called Marjaree Mason Center.

When I arrived at Marjaree Mason Center, I was scared and overwhelmed with everything – the house, the women, all of it was just a lot. However, in the first three months of my stay, I was given support, motivation and genuine emotional support from the other ladies and client advocates.

Marjaree Mason Center has provided self-expression classes, legal aid, counseling and many more services like housing so we can work toward being in our own home.

I have been very fortunate to be at Marjaree Mason Center for the past eight months. I am now currently looking for my new home for my son and myself. I have a job and I have my life back.

When I arrived I was broken emotionally, physically, and without hope. Thanks to Marjaree Mason Center I am no longer that person. Words cannot show the gratitude that I have for the staff and the donors who contribute to Marjaree Mason Center. I am truly appreciative of all that has been given to me.

No longer will I be a victim of domestic violence. I am a SURVIVOR of domestic violence. I am SAFE and FREE. Thank you!

”



I AM A
survivor
OF DOMESTIC VIOLENCE



COUNSELING

Marjaree Mason Center offers individual and group therapy for adults and children affected by domestic violence. Services are offered at all six MMC locations.

Individual Counseling

Marjaree Mason Center has Licensed Marriage and Family Therapists and a Licensed Clinical Social Worker, as well as non-licensed practitioners obtaining hours towards licensure, offering individual therapy to help individuals affected by domestic violence learn to reduce anxiety and achieve optimum mental health. Sessions are offered at all MMC sites and are available to both survivors and their children, as well as those who have harmed another person.

1 THERE IS Hope

Group Therapy

Sessions designed for more than one person allow for collective sharing and processing. MMC runs open and closed groups that are sometimes topic specific but all designed to address the impact the domestic violence has had on survivors and their multifaceted challenges.

Domestic Violence Support Group

This group provides processing and support for survivors of domestic violence.

Kid's Group

Kid's groups support children in identifying feelings and building tools to express themselves appropriately.

Ages separated into 5-7 and 8-12.

S.A.F.E. Group

S.A.F.E. Group, which stands for Survivors of Abuse: Free and Empowered, is a 12-week course covering domestic violence, with topics including (but not limited to) defining domestic violence, understanding healthy relationships and the effects of domestic violence on children. This course meets court requirements to consider modifying a restraining order. It is deployed in most MMC sites and other community based organizations. It can be delivered in groups or 1:1 with an individual.



LEGAL ASSISTANCE

Marjaree Mason Center provides a variety of services including legal advocacy, court accompaniment, education and other services to victims of domestic violence.

Advocacy

The Marjaree Mason Center legal advocates offer clients crisis intervention, support, education on the criminal justice system, safety planning and connects them with community resources. MMC victim advocates co-located at the Fresno Sheriff's Office and the Fresno Police Department contact victims who have reported domestic violence to these agencies.

Legal Options

This class is free and open to the community. It is held every Thursday and begins promptly at 10am at MMC's administration building in downtown Fresno. The first portion of the class is informational and provides an overview of various types of restraining orders, the criminal justice system, safety planning and services available. The second portion of the class walks clients through filling out a request for a Temporary Domestic Violence Restraining Order.

Court Accompaniment

The court process can be overwhelming for those seeking a restraining order. Victim Advocates attend restraining order hearings with clients. For many victims, their abusers control the purse strings and are able to obtain attorneys. Advocates create a more level playing field by keeping victims informed of their legal options.

Child Custody and Divorce

A legal document preparer on staff is available by appointment to assist with divorce and child custody papers.

Project First Step

For clients seeking restraining orders with more complicated legal issues, advocates may refer to a Project First Step attorney. Project First Step is a program where attorneys represent clients pro bono at their restraining order hearings. This service is provided in partnership with Central California Legal Services, Inc.

*new
beginnings*

ARE POSSIBLE



REFLECTIONS

Support for a Bright Future

“ I arrived to Marjaree Mason Center December 15, 2017 with my 3 children as an emergency safe house client. I came from out of the city, new to the area, but needed a change.

When I started doing my classes, which included safe parenting, it taught me so many things. It helped me to understand my trauma along with my kids. My case manager was such a good help along the way. She referred my children for additional services. They are teaching me ways to communicate with my kids and help with their speech delay. I received therapy – which was really helpful – I completed my program successfully and got into the transitional housing program. A job specialist helped enroll me into school to get my GED. I also got a seasonal job at Macy’s while still being at the safe house. I’m so thankful Marjaree Mason was able to help me.

Today I am blessed with a 2 bedroom apartment home that Marjaree Mason Center helped me get. I have a safe place to be with my children and see life in a more positive way. I’ll forever be thankful to all the staff that supported me along the way. Thank you!

”

I’LL FOREVER BE
thankful



A SAFE PLACE WHERE
CHILDREN CAN

*learn,
grow
& play*



CHILDREN'S ENRICHMENT

The Children's Enrichment Center at MMC provides support to residential children and collaborates with multiple agencies in Fresno to offer assistance and resources to children. Support is provided through schools, accessing mental health services and assessing other needs the children may have. In addition to being a positive and safe place where children can learn, grow and play, the Enrichment Center contains books, puzzles, games and fun activities for children of all ages. Adjacent to the Enrichment Center is a large outdoor play area that children can enjoy. Child supervision is provided while moms attend onsite counseling, legal classes or groups. Supervision is provided by highly skilled staff, dedicated volunteers and with the loving and supportive help of our MMC "foster grandparent" volunteers.

Programs and Services

- Appointment based and respite childcare
- Child developmental and enrichment activities
- Developmental assessments (ASQs)
- Parent-child bonding, parent coaching and Family Play Groups
- Identifying and learning to process emotions in Kid's Group
- School district connections (FUSD Project Access)
- Talk Team Speech Therapy consultation services
- Referrals to services for children (CVRC, EPU, CYS)

EDUCATION & TRAINING

The Marjaree Mason Center conducts numerous community training presentations every year. These presentations include general information about domestic violence, as well as what to do if you suspect someone you know is a victim. Many schools, day-care facilities, healthcare providers, faith-based organizations and other agencies have received training.

The largest training programs are the Life Transition Program and Youth Education.



TOOLS FOR

healthy

RELATIONSHIPS

40-Hour Domestic Violence Counselor Training

Meets the requirements set by California Evidence Code 1037. Training provides a basic understanding of domestic violence including resources available to those affected by domestic violence. A certificate of completion is given at the end of the training which allows the individual to work or volunteer for a domestic violence victim service organization.

Domestic Violence (DV) 101

The course outlines the dynamics and complexity of intimate partner violence including the cycle of violence, warning signs of an unhealthy relationship, how to support a friend or family member and resources available for someone experiencing domestic violence.

Life Transitions

Education and training for individuals post-conviction of domestic violence or referred by another agency. Providers are geographically based and our designated zip code is 93710. However, referrals are received from outside our boundaries on a regular basis.

CHANGES: Batterers' Intervention Program

The Batterers' Intervention Program is a 52-week class for people post-conviction or referred by another agency in a domestic violence related situation. Pre-registration is required, self-referrals are not allowed.

CHOICES: Healthy Communication Program

(Adults and teens)

Formerly called the Anger Management Program, this 12-week class develops the tools and skills needed to manage conflict and maintain healthy relationships. Pre-registration is required, self-referrals are allowed.

Nurturing Parent Program

The Nurturing Parenting program is a 12-week class that utilizes a successful Nurturing Parenting curriculum. Pre-registration is required, self-referrals are allowed.

Phoenix Family Violence Intervention Program

A 26-week program that integrates accountability, responsibility, compassion, empathy, self-care, healthy communication, relationship building, anger management skills and parenting without punishment.

Teen Batterers' Intervention Program

A 26 week course for people post-conviction or referred by another agency in a domestic violence related situation. Pre-registration is required, self-referrals are not allowed.

Additional services include:

- Individual counseling for adults and their children
- Domestic Violence Inventory (DVI) assessment
- ACEs evaluation (Adverse Childhood Experiences)
- Child Abuse Intervention Program

KNOW MORE

YOUTH EDUCATION

kNOw MORE

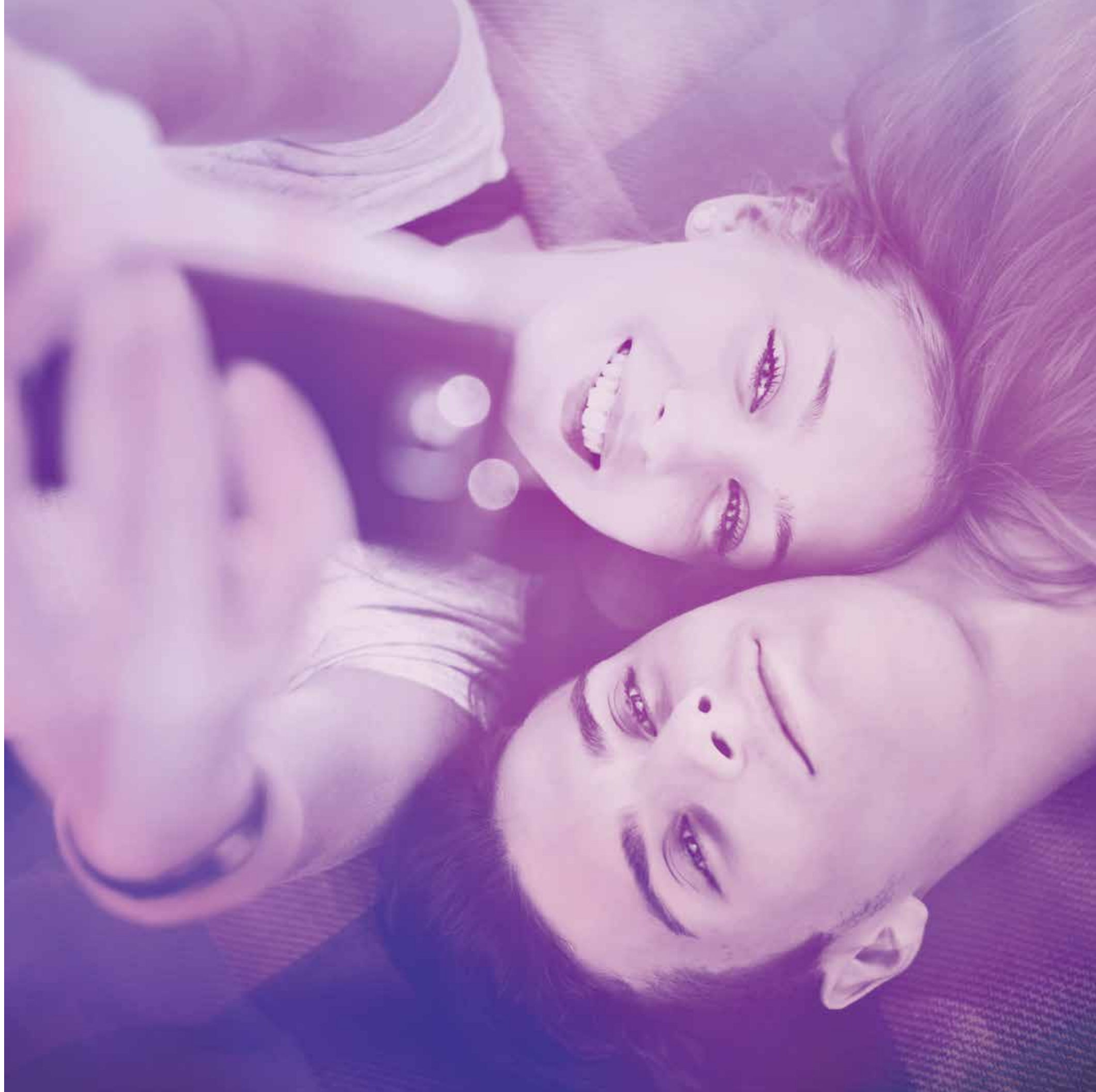
kNOw MORE was created as a forum for teens to speak to other teens utilizing drama, music, real-life situations and statistics of abuse in teen relationships to demonstrate the seriousness of the problem. The primary audience of kNOw MORE presentations are high school-aged youth, however, we also do presentations for teachers, parents and other adults regarding teen dating violence and how to help if a teenager you know is facing this difficult issue.

A partnership with Fresno County school districts, kNOw More provides domestic violence education and intervention to teens with the goal of educating youth on the immediate and long-lasting effects of abuse in teen relationships.

Safe Dates

A curriculum-based program designed for implementation in the school system. It is currently presented in middle schools and to partner agencies such as Boys and Girls Clubs.

MMC has also presented this curriculum at foster homes and other agencies who work with at-risk youth.



REFLECTIONS

Putting a Stop to the Cycle of Violence

“ I believe the violence got out of control the first time my wife found out about my adultery. I know all of our confrontations had everything to do with my wife trying to save our marriage. At the time I was blind. I had tunnel vision. I only cared about what I wanted. I was being selfish. In turn, I started becoming verbally, emotionally, financially and physically abusive. I used these abusive tactics to try and justify the wrong and hurtful things I was doing.

I cheated on my wife and I was drifting apart from her while she struggled to keep us together. I believe I continued the abuse to try and separate from her. All I felt was numb. I couldn't realize the hurt I was causing not only to my wife, but the hurt I was causing my family.

I justified the abuse by telling myself I didn't want to be here anymore. I kept lying to myself by telling myself this would make her want to stay away from me. I was so wrong. My wife loved me so much she kept holding on.

I know that if the abuse continued it would've gotten much worse. I know it would have because my behaviors were getting out of control.

I am ashamed of what I did to my wife and my family. It is embarrassing to know that I let it get out of hand and not care about how it would affect my family. What I want most from this counseling is to learn how to effectively communicate with my beautiful wife. I also want to learn how to follow the steps on how to diffuse a bad situation. I want to recognize red flags and have the ability to talk with my wife and help understand when I need to take a time out. I need to learn how to cool down so that I can calmly talk about what is bothering me.

I've seen patterns in my behavior that all start with me drinking and talking to women on social media. I've learned when I spend time keeping myself busy doing projects, playing with my daughter or going out with my wife, all are healthy things I can do to keep me from falling back into my old ways.

I believe I've come a long way from where I used to be. I have made several changes in my life for the better. I know if any new behaviors come up in my life I can talk to my wife. She can help me figure out how to properly maintain my behaviors. I have learned a lot of step on how to recognize when I am being hurtful so when my red flags come up I will know how to deal with any problems without resorting to violence. ”

I'VE COME A

*long way*FROM WHERE I
USED TO BE.

2017 - 2018

STATISTICS

OUR CLIENTS

6,098

adults and children served in fiscal year 2017-2018.

5,274

adults

824

children

SHELTER

156

beds at two safe houses.

56,000

nights of safe housing provided to adults and their children.

EXPENSES

\$19,146

per day to keep Center operational

\$119

average cost per person for one night of shelter and services

\$10,700

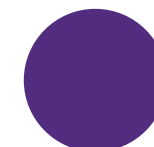
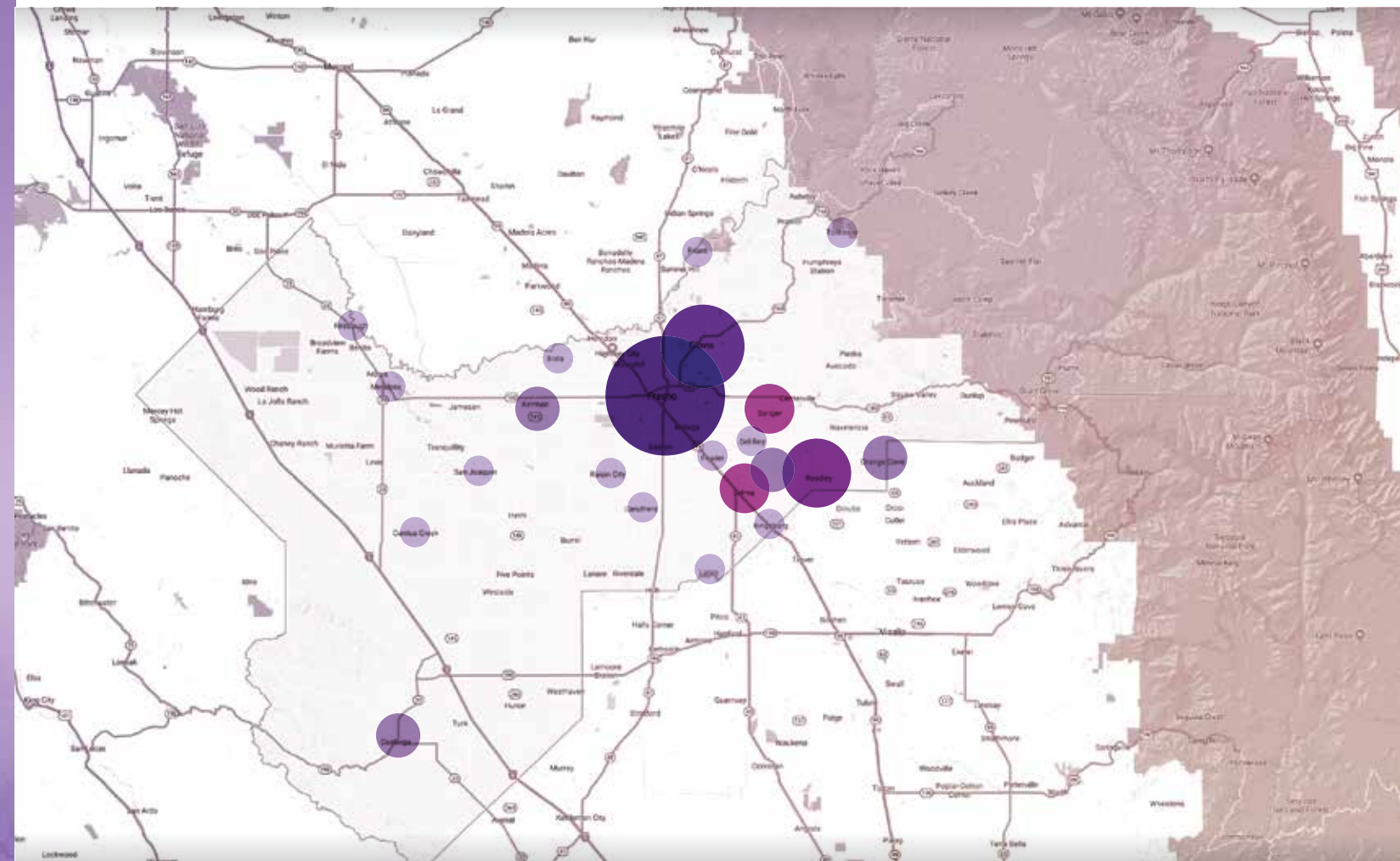
for a family of 3 to receive crisis services and safe housing for 30 nights.

\$51,000

to house emergency clients at motels when shelter was at capacity.

We serve adults and children from

ALL OVER FRESNO COUNTY



1,000+



501-1,000



101-500



51-100



26-50



1-25

2017 - 2018
FINANCIALS

Fiscal year October 1, 2017 - September 30, 2018

ASSETS

Cash and Cash Equivalents	282,290
Short Term Investments	1,742,312
Grants Receivable	932,692
Accounts Receivable	213,967
Other Current Assets	169,722
Long-Term Assets	3,140,734
Total Assets	6,481,717

LIABILITIES & NET ASSETS

Accounts Payable	127,640
Accrued Expenses	375,716
Deferred Revenue	208,880
Forgivable EHAPCD Loan	1,000,000
Net Assets	4,769,481
Total Liabilities and Net Assets	6,481,717

SUPPORT & REVENUE

Grants and Contracts	4,269,349
Contributions	1,320,290
Program Fees	349,077
Special Events	491,193
Donated Services & Supplies	138,076
Investment Income	33,068
Total Revenue	6,601,053

EXPENSES

Program Expenses	5,469,514
Supporting Expenses	823,130
Fundraising Expenses	267,328
Total Expenses	6,559,972

Revenue Over Expenses 41,081

REFLECTIONS
A Donor Story



Vincent Isnardi
 1948-2011

Vincent Tocchini Isnardi was born and raised in Fresno and returned after graduation from the University of California San Francisco School of Pharmacy in 1943 to join the family pharmacy business, International Drug Company.

After a lifetime of caring and giving, Vincent created the Isnardi Foundation in 2006 as a way to continue his support of those in need in the Fresno and surrounding areas. Since the inception of the Foundation, more than 20 organizations have benefited from Vincent's generosity.

Peter Tocchini, Vincent's cousin, recalls how the Isnardi Foundation became acquainted with Marjaree Mason Center:

“ In early 2013, I was invited to become a board member of the Isnardi Foundation. My sister Judith had been a member since its inception. As always, I stay at my sister's home in Visalia when it is board meeting time in Fresno. During the visit for my first board meeting my sister shared with me an article in *The Fresno Bee* about Marjaree Mason Center. It sounded interesting and intriguing to us so my sister contacted

the Marjaree Mason Center to obtain more information. From there, we invited Marjaree Mason Center to submit a grant request. As I recall, the initial grant included two vans to transport clients and security cameras. Since that time, we've made several visits to the Marjaree Mason facility. With each visit, each contact, and each grant request our board has become strong believers in the purpose, programs, safe house facility, and most importantly the people who make Marjaree Mason Center the successful organization it is.

I encourage donors and potential funders to look carefully at Marjaree Mason Center's mission and vision, the programs to serve families recovering from domestic violence and the leadership and staff responsible for making it successful. In addition, look at Marjaree Mason Center's plans, their needs for the future, the facility and meet some of the clients as I have. And, after doing all I have said, jump in feet first and support Marjaree Mason to your full ability!

Support

MARJAREE MASON CENTER
 TO YOUR FULL ABILITY.

”

MAJOR PUBLIC FUNDERS

California Office of Emergency Services

City of Fresno

County of Fresno

- Department of Social Services
- Probation
- Sheriff's Department
- Superior Court

Federal Emergency Management Agency

First 5 of Fresno County

Fresno Unified School District

U.S. Department of Housing and Urban Development

Trina and John Jensen
Richard Johanson
Mason Residential Care Facility
Maxwell Foundation
Michael Cadillac, Inc.
Moore Twining Associates, Inc.
Moss Adams, LLP
Ms. Molly Foundation
Debbie and Ali Nekumanesh
Neurosurgical Associates
Medical Group
New Covenant Community Church
Pacific Service Credit Union
Linda and Don Pickett
Pleasant Mattress Company
Porsche of Fresno Audi Fresno
Progressive Home Club
Rasmus Investment Group, LLC
Deborah and Timothy Riordan
Ruiz Food Products, Inc.
Snowden Enterprises, Inc.
Table Mountain Casino
Terminal Air Brake Supply
Union Bank of California
United Way California Capital Region
Michele and Ted Waldron
Terri and James Walls, Jr.
Wayne H. Towne Family Foundation
Jane Willson and Malcolm MacDonald

\$1,000-\$2,499

Teresa and Dan Adams
Aetna Foundation
Alorica Fresno
Louise and Augusto Altamura
Laurie and Richard Alves
American Ambulance
Teri and Richard Amerine
Cheryl and Don Baker
Teresa and John Barber
Belmont Nursery, Inc.
Dwayne and Rich Berrett
Peggy and Mark Borba
Bruno's Iron & Metal LP
Buford Oil Company
Sally Caglia
California Classic Events
California State University of Fresno
California State University, Fresno -
Health & Human Service
California State University -
Fresno Association

Rick Carsey
Catholic Charities
Carolyn Cave
Central California Legal Services, Inc.
Central California Pistol League
Central Valley Community Bank
Charming Charlie
City of Clovis Police Department
Jenine and Ron Cortopassi
Barbara and Chester Crain
Shelly Crawford
Kristie and Maurice Cyrus
De Young Properties
Dee Lacy and David Hill
Marilyn and Nat DiBuduo
Nora Dobashi
Elizabeth Dooley and Thomas Williams
Diane and Jerry Dyer
Elmore Medical Vein and Laser
Fiat of Fresno
Fig Garden Women's Club
Martha and Max Flaming

Janet and Terry Fletcher
Flux Pilates & Wellness
Jamie and Jeffrey Francis
Laurie and Daniel Freeman
Fresno Acura
Fresno Amenities Day Spa, Inc.
Fresno Cancer Center
Fresno City Employees Assoc
Fresno City College
Fresno County Sheriff's Office
Fresno Deputy Sheriffs Association
Fresno Eastside Foursquare Church
Glenna Gates and Mark Petersen
Gazebo Gardens
Linda and Robert Glassman
Karen and Donald Gregory
Margaret and James Hall
Sara Hamilton
Cheyl and William Hancock
Harris Ranch Beef
Sumera Hayat and Jeffrey Wilkinson
Trudy Hemphill
Dovey and Joe Herzog
Julie and Pete Holmes
Kerri and Bryon Horn
Kathy Horstmann-Huebert
Rodney Horton
Carmen and Sergio Illic
Imperial Dove Court De Fresno/Madera
John Ventresca Company
Yvette and Joseph Jones
Tips and Marvin* Just
Kathy and Randy Keiser
Mary Ann and Richard Keyes
Vivian Kim
Pam and Bruce Lackey
Anita and Richard Malkasian
Jessie and Lawrence* Mason, Sr.
Lisa Massetti
Steven McGee
Milano Restaurants International
Ratan and Emil Milevoj
C. Jill Minar
Deborah Moffett
Barbara and Doug Morgan
Shelley and Donald Myers
Cynthia and Douglas Myovich
North Fresno Lions Club
North Fresno Rotary
Office of the Provost and Vice President
for Academic Affairs
Our Saviour's Lutheran Church
Pinot's Palette - Fresno
Carrie and Ron Pohndorf
Trina and Michael Rolph
Marcia Ross
Frank Salvio
San Joaquin College of Law
Katherine and James Sanchez
Fred Schreiber
Josie Mae Seah
Sebastian & Shyboy, LLC
Kathleen and Alan Shows
Paula Siegel and Jerry Radinoff
Larry Smallie
Esmeralda Soria
Colleen and Bryan Souza
Mary and Bill Stegall
Charlotte Steinert
Colleen Stern
T&M Hazardous Waste Management, LLC
Table Mountain Tribal Government Office
Kay Tolladay Pitts and Don Pitts
Unitarian Universalist Church of Fresno

Dawan and Thomas Utecht
VANS #531
Vonda's
Rosemary and Gerald Waters
The Well
WestAmerica Bank
Leona White
Lynnette and John Zelezny

\$500-\$999

Air Quality Compliance DBA Smart Choice
Alex Hudson Lyme Foundation
All Valley Administrators, LLC
Allstate Giving Campaign
Ampersand Ice Cream
Karen and Brian Anderson
Angels of Grace
Samantha Appleton-Escamilla
and Eric Paul Escamilla
Shirin Assemi
Mary and Joe Avila
Merry Gale Baiz
Bakman Water Company
Danielle Barry
Gwen Blomgren
Jackie and Stephen Bradley
Onedra Bratcher
Terra Brusseau
Carolyn and Willie Burns
California State University, Fresno -
Kinesiology
California State University, Fresno /
Social Sciences
Cher and Doug Cardwell
Central California Asian Pacific Women
Cheryl Chambers
Ann Christensen
Angela Cisneros
Sarah Clem
Robert Croeni
Andrew Cummings
Christine and Peter Cummings
Melinda and Daniel Cunningham
Marc Dabbs
Beth Duncan
EcoWater of Central California
Dolores and Michael Elkins
Tsenia and Ellery Ellis
Exchange Club of Clovis
Exchange Club of Fresno
Charitable Account
Fashion Furniture
Ferguson Bath Kitchen & Lighting Gallery
Matt Folmer
Fresno Center for New Americans
Fresno Crime Stoppers Program, Inc.
Fresno First Bank
The Fresno Grizzlies
Fresno Housing Authority
Fresno Neon Sign Co., Inc
Fresno Police Officers Association
Fresno Rack & Shelving Co., Inc.
The Friday Club
Al Galvez
Andy Garcia
Martha Garcia
The Gastro Grill
Lorna Gill
Carole Goldsmith
Yadira Gonzalez
Great Vacations, Inc. DBA
The Cruise Experts Agency
Emett Grijalva
Meg Hadcock

2018 DONORS

January 1, 2018 - December 31, 2018
*Deceased

\$25,000 AND ABOVE

Terry and Wallace Barthuli
California Healthcare Foundation
CalViva Health
Cook Land Company
Domus Mitis Foundation
Fansler Foundation
Isnardi Foundation
JP Lamborn Co.
Kaiser Permanente
KFSN-TV Channel 30
Living Legacy Foundation
Meathead Movers
MJR Creative Group
O'Keefe's Inc | Safti First
Gary Oliver
Sahm Family Foundation
Darlene and Stanley Spano
Valley Children's Healthcare
The Whitney Foundation

\$10,000-\$24,999

California State University Fresno,
Office of the President
CDC Joint Venture Program
Central Valley Community Foundation
Clovis Unified School District
Dianne and Steve Dalich
Dutch Bros. Coffee
Educational Employees Credit Union
The Grainger Foundation
Ozella Green
JD Food
Johanson Transportation Service
Kohl's National Giving Program
Leon S. Peters Foundation
The Otis Booth Foundation
Outfront Media
Penny Newman Grain Co.

Derrel Ridenour
Rotary Club of Fresno
Serving USA
Sieg and Doris Fischer Foundation
Lisa and Brent Smittcamp
Smittcamp Family Foundation
Mary Lou and C. Ray Steele, Jr.
Bonnie Tanner
VANS #152
Wells Fargo Foundation
Genesis and Brent Wilson
Peggy Wright May and Donald May

\$5,000-\$9,999

Hengameh and Naeem Akhtar
Glenda Allen-Hill and Ronald Hill
Bee Sweet Citrus
Desa Belyea
Janell and Marvin Boldt
Burks, F.L.R. & Adelaide T/UW
California Foundation for
Stronger Communities
California Gastroenterology Associates
Campos Land Company, LLC
Leah Cole
Ralph Cross, Jr.
Amy and Jim Davis
DC4KIDS Fund
Derco Foods International
DiBuduo & DeFendis Insurance Brokers, LLC
Disney Worldwide Services, Inc.
Donaghy Sales
Dyer Family Foundation
East Fresno Rotary Charity Foundation
Eye-Q Vision Care
Laura and Brent Folland
Fresno Clovis Convention and
Visitors Bureau
Gary & Barbara Marsella
Family Foundation
Jim Crawford Construction
Pamela and Gene Kallsen
Terra and Jason Lamborn
Melinda Laval and Khaled Alkotob
Deborah Ledford
Nicole and Colby Linder
Brook Lopez
Robin Lopez
Michele and Theodoros Lykos

Noble Credit Union
Premier Valley Bank
Saint Agnes Medical Center
Soroptimist International of Clovis
Karen and Richard Spencer
Summit Surgical
Sutton Hague Law Corporation
John Toomasian
Valley Wide Beverage
Mary Viancourt
Denise and John Werft
The Wonderful Company Foundation
Zenith Insurance Co.

\$2,500-\$4,999

Access Plus Capital Fresno EOC
Adeline E Ritchie Charitable Trust
Gina and Brooke Ashjian
AT&T
Bank of America
Blair, Church & Flynn
Jonelle and Stephen Borcich
Caglia Environmental, LLC
California Bank and Trust
California Health Sciences University
Central California Women's Conference
Chevron
Community Medical Centers
Community Medical Foundation
Carol and Lee Copeland
Crescent View West Public Charter, Inc.
Darin M. Camarena Health Centers
Der Manuel Insurance Group
Dowling Aaron Incorporated
Peggy and David Dunlap
Donna and Tim Finegan
Kaye Fisher
Helen Fort
Fresno County Prosecutors
Fresno Equipment Company
Gar Tootelian, Inc.
John Giannandrea
Lisa and Michael Gragnani
Grundfos Manufacturing Corporation
GSF Properties, Inc.
Hedieh Arbabzadeh M.D. /
Women's Plastic Surgery Fresno
In-N-Out Burger Foundation

Bonnie Her and Patrick Ramirez
 David Hodge, Sr.
 Kim and Kelly Hohenbrink
 Philip Hyden
 Lois and Gary Ingham
 J.D. Heiskell & Company
 Rick Jimenez
 Carole Johnson
 Janet Johnson
 Jorgensen Company
 Lisa and Charles Keller
 Kerman Covenant Church
 Mary and James Kinter
 Garrett Kolb
 Gwen Leffall
 Daniel Leppo
 Drusilla Malcolm-Zachary
 Manco Abbott, Inc.
 Samantha Marcogliese
 Janice Maroot
 McCormick, Barstow LLP
 Attorneys At Law
 Mediterranean Grill Cafe
 Judith and James Miller
 Diane Milutinovich
 Minarets Medical Group
 Bernadette Muscat and Michael Lukens
 Kathy Omachi
 Opal J Rupe Testamentary Trust
 Cleo and Dominic Papagni
 Doug Papagni
 Theresa and Walter Plachta
 Poverello House
 Promesa Behavioral Health
 Irene and Robert Rankin
 Laurie and Steve Renna
 Heidi Riedle and Pete Gustafson
 Ropamex Wholesale
 Janice Russo
 Joyce Schneider
 Susan and Norman Senzaki
 Marcia and Jack Shafer
 Katayoon Shahinfar
 Courtney and Josh Shapiro
 Joy Sharp
 Davinder and Harbax Sidhu
 Simran and Jugshir Sidhu
 Sierra West Warehouse and Logistics
 South Bay Community Services
 State Center Community College
 Robin and Brad Stevens
 Suddenly Single Wealth Management™
 Sunnyside Bicycles
 Tammy and Todd Suntrapak
 Table Mountain Rancheria
 Carol and James Thaxter
 TJ Maxx
 Tri Counties Bank
 Anastasia Tsyboulia
 United Way Fresno/Madera Counties
 University Brand Strategy and Marketing
 VANS #487
 Monica Veith
 Regina Vukson
 Leigh and John Walth
 Ashley and Jerrell West
 Wiebe Hinton Hambalek, LLP
 Meg Wolfe
 Susan and Michael Woods
 Lisa and Stuart Woolf
 Laurie Young

\$250-\$499
 Vickie and Gid Adkisson
 Allstate
 Anahid and Wilfred Astvasadoorian
 Barbara Avila
 Betzavet Ayala
 Sally Ayer
 George Barnhart
 Barthuli and Associates
 Joni and Matthew Basgall
 Deborah and Keith Bergthold
 Ashley and Ed Besoyan
 Rosemarie Bezerra-Nader
 Lorraine and Hal Bolen
 Denise Brown
 Buckley Financial Group, LLC
 Danielle Campagne and
 Robert Mangano
 Kevin Carano
 Sue and Gary Castro
 Cedar Avenue Recycling and
 Transfer Station
 City of Kingsburg
 Omie and Lawrence Cormier
 Rheya and Tony Cortopassi
 Costco Wholesale
 Kathleen and Gordon Cromwell
 Sara and Tim Curley
 Jody Daly
 Janis and James Devany
 Aurora Diaz and Gary Gomez
 Elizabeth Diehl
 Lee Ann Eager
 Earth Arts Studio, Inc.
 Jeanette Elms
 Analise and Derek Elrod
 Facility Designs
 Family Options
 Norma Ferraiuolo
 Fresno Organization of Retired
 City Employees
 Fresno-Kings County Cattle Women
 Stacey Giguere
 Kelly Gong
 Diane and Sal Gonzalez
 Gail and Bob Gorman
 Michael Habibe
 Sadie Hemsath
 Jeffie Hickman
 Mary Hickox
 Lynn Higdon
 Hope Lutheran Church
 Hopewell Missionary Baptist Church
 Erika and Darryl Horowitz
 Nika Howell
 Edwin Huff
 Immanuel Evangelical Lutheran Church
 Debra and Daniel Jamison
 JC Penney's
 The Jewels Love You, a C+I Boutique
 Victoria and Larry Johnson
 Jean Jordan
 J's Communications, Inc.
 Jo and Philip Kader
 Brenda and Steve Kane
 Karahadian Dental
 Windi Kneeland
 Teresa and Eric Kurtz
 Ivan Lasher
 Kim and William Lee
 Love Song Community Outreach
 Lozano Smith
 Lisa and Jonathan Maher

Malaga Elementary School
 Nader Malakan
 Kiranvir Mangat
 Diana and Eldon Marks
 Jennifer Maslach
 Jill Mason
 Javier Mendoza
 Bob Miller
 Valentina Montez
 Margarita Mora
 Virginia Mott
 National University
 Susan and Conrad Nilmeier
 Hope Nisly and Douglas Kliewer
 Kelly Lee O'Boylan
 Stephanie and Robert Oliver
 Nick Otero
 Stacy and Kenneth Padgett
 Libby and Pat Palacios
 Toby and James Petrucelli
 Valerie and James Price
 Provost & Pritchard
 Gary Quisenberry
 Rabobank- Fresno/Madera Food & Ag
 Veronica and Rene Ramirez
 Hector Ramos
 Rape Counseling Services of Fresno
 Vernon Reynolds
 Sarah Reynoso Gonzalez and
 George Gonzalez
 James Robillard
 Magdalena Rodriguez-Lurig
 Jackie Ryle
 Sagaser, Watkins & Wieland PC
 Diane Salazar
 Salesforce.org
 San Joaquin Valley College
 Lupe Sandoval
 Yvonne Serpa
 Caroline Sharp
 Arminee and Leo Shishmanian
 Bev Shuemaker
 Janelle Smith Ozeran and
 James Ozeran
 Susan Stafford
 Target Corporation c/o Cybergrants
 Univak Fresno
 Ana Van Horst
 Peggi and Randy Vaughn-Dotta
 Angie and Rex Wilcox
 Delilah Williams
 Patricia and Fred Wittwer
 Christina and Mark Yee
 Catherine Yen
 Zinkin Development

Media Sponsors
 ABC 30
 MJR Creative Group

SAVE THE DATE

36TH ANNUAL



PROFESSIONAL
Women
 & LEADING
 BUSINESS
Awards

TUESDAY, OCTOBER 15
 11:00 AM – 1:00 PM
 FRESNO CONVENTION CENTER



2019 KEYNOTE SPEAKER

Rosie Hidalgo

This event pays tribute to ten women who have served as role models and given back to their communities, all while making strides in their professions. One business is also honored as the Leading Business of the Year for its support of women and women's issues. This prestigious awards ceremony will bring almost 1,500 attendees together with the goal of honoring these outstanding individuals in our community while also raising awareness for domestic violence.

TICKETS ON SALE NOW: mmcenter.org/top-ten



1600 'M' Street
Fresno, CA 93721

NON-PROFIT ORG
U.S. POSTAGE
PAID
FRESNO, CA
PERMIT NO. 250