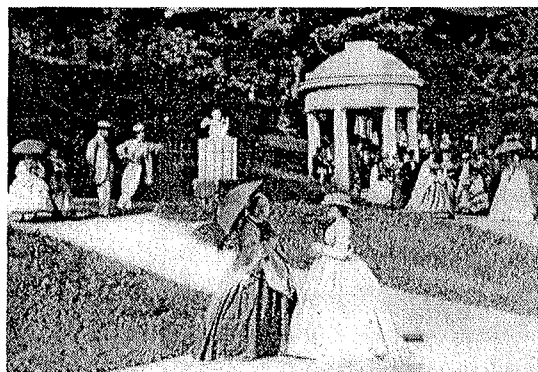


# NYSO New York State- Ontario Chapter Music Library Association

Number 48  
Fall 2003

G. Dale Vargason, Editor  
Eastman School of Music



*(Taking the waters at the Columbian Springs,  
Saratoga Springs, NY, c1880).*

## 2003 Annual Meeting at Skidmore College

Home of famous healing springs, the oldest thoroughbred racetrack in America, and known for its outstanding architecture, Saratoga Springs is a perfect location for any type of gathering. Skidmore College is also located here, the site chosen for this year's annual New York State/Ontario Chapter meeting. Chapter Chair, Edward Komara is putting together a program that is sure to be a success. Included in this newsletter is all the information needed to attend. Please make sure to fill out the registration form inside and send it in by the deadline.

Please see pages 3-4 and inserts for more on the conference. Also, please do not forget to pay your membership dues for the year (see inside) and nominate someone for open positions.

## Message from the Chair

### In this issue:

2003 Annual Meeting...	1,3-4
Message from the chair....	1-2
Call for Nominations.....	4
News around the Chapter....	5
Financial Report .....	6
List of officers .....	6
MLA Application.....	7
NYSO Membership.....	Insert
Registration & Map ...	Inserts

Hello! Who can believe it is September already? For those of us who work on academic campuses, the fall semester is now underway. And on behalf of our members at public libraries and other collections, we are noticing a change among our regular patrons, especially that they are wearing heavier clothes now. It is a time for concert series, the football season, and some of the most glorious weekends any hiker can ask for.

I hope to see you at the fall meeting at Skidmore College at Saratoga Springs, NY. You will find information about the meeting and the registration form in this newsletter. I have enjoyed making new contacts at Skidmore and at the Saratoga Performing Arts Center towards our event, and next week (from this time of writing) I will make an advance trip to Saratoga Springs to finalize the local arrangements. This year's NYSO meeting promises to be a worthwhile and offbeat one.

My year as NYSO chair has been a busy one, partly due to my assistance towards a systems migration to the Aleph library catalog/circulation system at SUNY Potsdam. Eventually the Aleph system will be installed in all of the SUNY campuses. Among the possibilities for the SUNY-wide installation is a greater coordination of interlibrary loan resources, and cooperative collection development programs. By the time these ideas come to practical fruition, I will have finished my term as NYSO chair, but I expect to continue watching and reporting on Aleph developments, and to try to anticipate their impacts on our work in music libraries, not only on SUNY campuses but on others as well.

*(continued on page 2)*

## Message from the Chair

(continued from page 1)

At the Music Library Association national meeting held at Austin, Texas last winter, I attended the chapter chair breakfast. In previous years I have seen this event listed on the meeting program, and I have always wondered what occurs there. This year I attended as the NYSO chapter chair, and so I satisfied my curiosity. Obviously, a lot of eating takes place, since it is a breakfast after all. Then there were reports from the chairs of chapter activities. One aspect that was encouraged by the incoming MLA president Laura Dankner was the chapter grants, especially for new and creative proposals in addition to the standard ones for travel grants. It is something we can remember at our meeting in October. If you think of a professional activity relevant to the chapter, feel welcome to discuss it with me and other members, and perhaps a viable proposal can be developed for MLA consideration.

One of the big issues that developed over last summer in academia at large is digital resources and copyrights, including those for sound recordings. *The Chronicle of Higher Education* and other leading newspapers have reported on the actions of the Recording Industry Association of America on individuals making available copyrighted sound recordings for free, many of them doing on college and university campuses. The pertinence of this issue to music libraries is considerable, especially wherever our libraries have computer labs for student use, such as at the Crane Library at SUNY Potsdam. This topic will not go away soon, and we may have to address it formally at future meetings.

Another topic we should discuss later is the rise of online full-text resources of music periodical and journal titles. Many music collections use the International Index of Music Periodicals with full text. Others have or will soon purchase the JSTOR electronic collection, which this fall will add almost 30 music titles. The use and viability of these new online full-text sites should be assessed, especially when rising paper journal subscription costs and decreasing budgets for some are occurring at many libraries now.

One of the best things about MLA and the NYSO chapter--indeed, perhaps one of the reasons for their existence--is that they gather us to talk about our jobs and our libraries, and that they help us realize that each of us is not alone in the profession. There are problems that occur in every library, and for each of them there are a variety of solutions that have been arrived at by our colleagues. Communication among ourselves is our strongest asset.

I look forward to seeing and renewing contact with you at Saratoga Springs this October.

Cordially,  
Ed Komara  
Crane Library, SUNY Potsdam

---

## A Call for Nominations

Two offices will be open for nomination this year:

**Chair Elect**  
**Newsletter Editor**

If you know of someone whom you would like to nominate, or if you are interested in this position, please e-mail Edward Komara at <[komaraem@potsdam.edu](mailto:komaraem@potsdam.edu)> with nominations. Later in September or early October ballots will be mailed, and hopefully we will have the election results by the Fall meeting.

## Fall Meeting at Saratoga Springs

"Health, History, and Horses" proclaims a sign outside Saratoga Springs. The 2003 NYSO fall chapter meeting will be held at Skidmore College on October 24 and 25, 2003. To my knowledge, the chapter has not met at Skidmore previously, so this eastern NY state location will be new to many members. The Saratoga Performing Arts Center, the National Museum of Dance, and the Yaddo Colony are institutions familiar at least by name to us. Here is our opportunity to take stock of the music and dance activities created and practiced in this region.

The program is still "under construction" as of this writing, but contact has been made with Saratoga Performing Arts Center (SPAC) representatives to come and speak. Invitations to speak will be extended to individual Skidmore College faculty who were recommended by the SPAC contacts. One NYSO member's paper has been accepted; there is room for one or two more – see the Call for Papers in this newsletter if you are interested in contributing.

Accommodations in the Saratoga Springs area are limited, so seek and book a room at a local or regional hotel whenever you can. As of this

writing (September 5), most rooms in the area for October 24 are booked in reserve blocks by larger conferences and Skidmore athletic events, until three weeks before that date. So, on and after October 3<sup>rd</sup>, the unbooked rooms will become available again to the public. So if you cannot book a room now, try again on or very shortly after October 3. A list of local and regional hotels is given in this newsletter for your use.

All sessions will be held at Room PMH 201 in Palamountain Hall on the Skidmore College campus. A map of the campus (included as an insert to this newsletter) may be found on the Skidmore website at <http://www.skidmore.edu/map/>. Directions to the campus (see insert) may also be found on the campus website at [http://www.skidmore.edu/map3/campus\\_directions.htm](http://www.skidmore.edu/map3/campus_directions.htm).

Dinner location at an area restaurant is pending. A \$10.00 conference fee is being charged to cover breaks and Skidmore fees. This is only a small price for two days of sights, sounds, and music library colleagues during the most glorious of fall months.

---

## Call for Proposals for 2003 Conference Presentations

The NYSO chapter welcomes paper proposals from members for the coming fall meeting at Skidmore College on October 24-25, 2003. Topics may include issues relevant to music librarianship, or they may be results of research in librarianship or musicology. Length may be 30 to 45 minutes (or, 12 to 20 pages of typed double-spaced text). Proposals should be sent to Ed Komara by October 1 at [komaraem@potsgdam.edu](mailto:komaraem@potsgdam.edu), or by mail to Ed Komara, Crane Library, Schuette Hall, SUNY Potsdam, 44 Pierrepont Avenue, Potsdam, NY 13676.

# **Tenative Schedule of Program\*** **NYSO Annual Conference 2003 at Skidmore College**

Saratoga Springs, NY

## **Friday October 24, 2003**

1:00-2:00 pm	Registration
2:00-3:30	Welcome; Session I
3:30-4:00	Break
4:00-5:30	Session II
5:30-6:30	Free hour
6:30-8:00?	Dinner

## **Saturday October 25, 2003**

9:00-10:30 am	Session III
10:30-11:00	Break
11:00-12 noon	NYSO Business meeting

\* All sessions will be held at Room PMH 201 in Palamountain Hall on the Skidmore College campus.

---

## **Accommodations**

**Hotels** (selected, as listed in the 2003 AAA guide for New York; NYSO members are welcome to seek other hotels through the World Wide Web or their preferred travel guides)

### **Saratoga Springs**

Hilton Garden Inn-Saratoga Springs, 125 South Broadway, Phone: 518-587-1500. 112 one-bedroom units. Rates range \$109-\$160 for one or two persons.

Holiday Inn, 232 Broadway, Phone: 518-584-4550. 162 one-bedroom units. Rates range \$149-\$189 for one or two persons.

### **Clifton Park**

Comfort Inn, 41 Fire Road, Phone: 518-373-0222. Phone: 518-373-0222. 60 one-bedroom units. Rates range \$89-\$119 for one or two persons.

Comfort Suites, 7 Northside Drive, Phone: 518-373-2255. 72 one-bedroom units, 3 one-bedroom suites. One-bedroom units begin at \$99 nightly.

Hampton Inn, 620 Plank Road, Phone: 518-373-2345. 80 one-bedroom units. Rates begin at \$99 nightly.

### **Glens Falls**

Queensbury Hotel, 88 Ridge St, Phone: 518-792-1121. 114 one-bedroom units, 11 one-bedroom suites. One-bedroom units begin at \$119 nightly.

**Additional lodging may be sought in Albany (north), Troy, or Schenectady.**

## Directions to Skidmore

Saratoga Springs is most conveniently reached by automobile via the New York State Thruway (I-90 and I-87) and the Adirondack Northway (I-87 north of Albany). Amtrak and the Greyhound and Adirondack Trailways bus lines offer daily service to and from New York City and Montreal, and several major airlines have regular flights to Albany International Airport.

### Driving

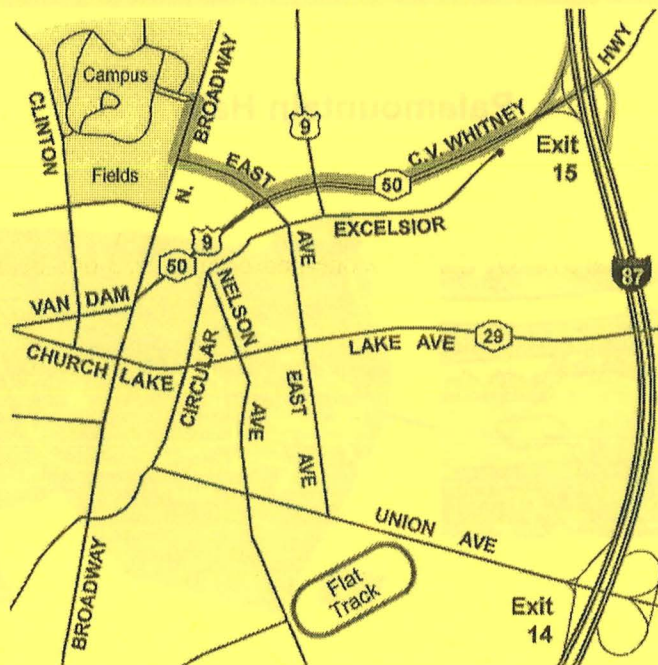
**New York City and points south:** Take the New York State Thruway (I-87) north to Exit 24. From the toll plaza, take Exit 1N to the Adirondack Northway (I-87) north.

**Boston and points east:** Take the Massachusetts Turnpike (I-90) west to Exit B1. Proceed on I-90 to Exit 1N and the Adirondack Northway (I-87) north.

**Buffalo and points west:** Take the New York State Thruway (I-90) east to Exit 24. From the toll plaza, take Exit 1N to the Adirondack Northway (I-87) north.

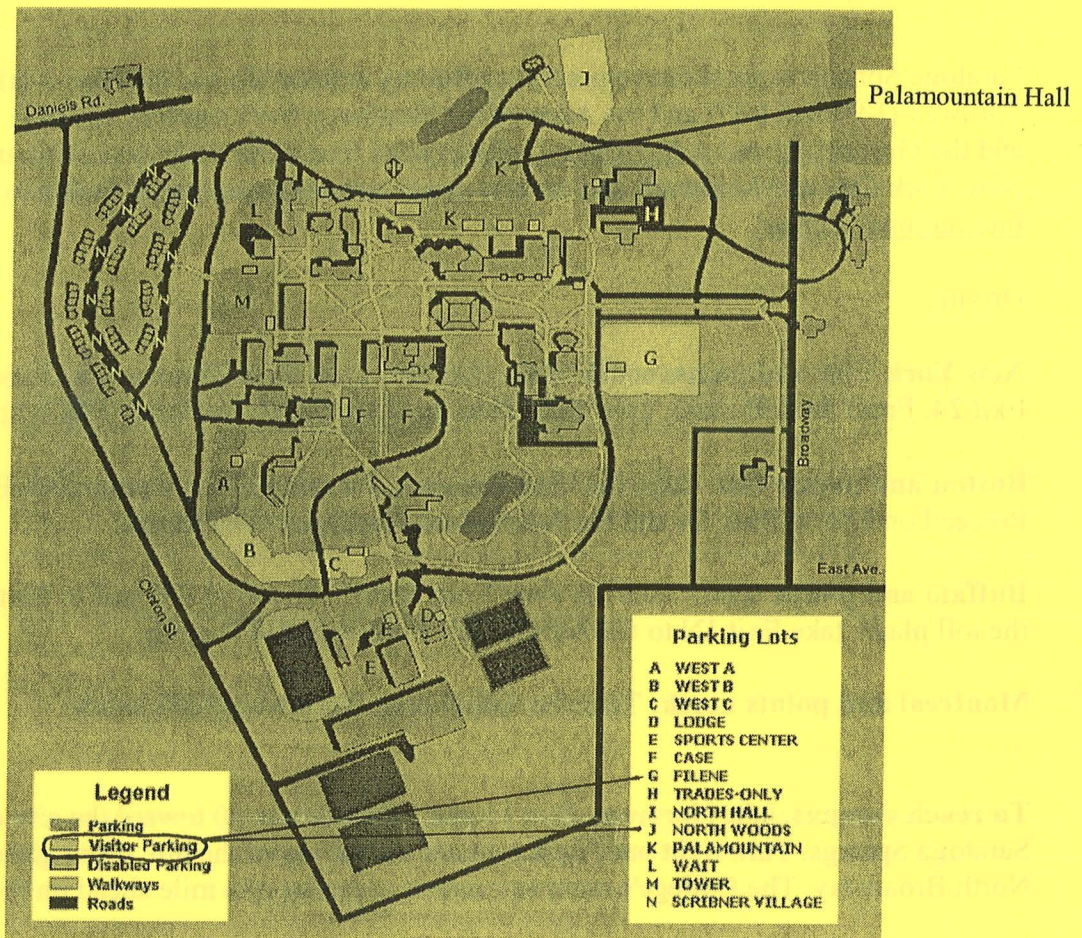
**Montreal and points north:** Take the Adirondack Northway (I-87) south.

**To reach campus,** take Northway Exit 15 and follow Route 50 toward the city of Saratoga Springs. Turn right onto East Avenue. At the top of the hill, turn right onto North Broadway. The College's main entrance is a quarter of a mile ahead on the left.

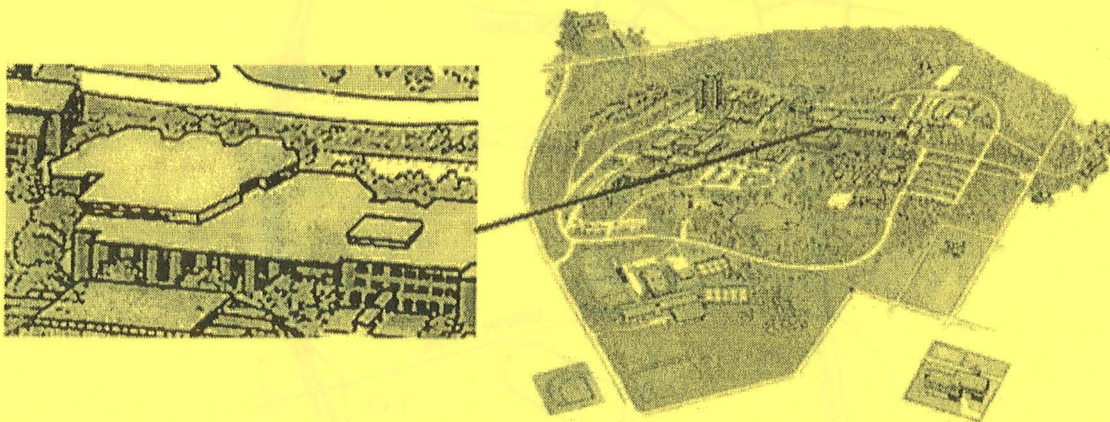




## Campus Parking and Access



## Palamountain Hall



## News from Around the Chapter

**The Cox Library of Music and Dance, Cornell University.** On June 2<sup>nd</sup> of this year, **Jim Alberts** was appointed Assistant Music Librarian. Jim is formerly from the Curtis Institute of Music.

**Sibley Music Library of the Eastman School of Music.** **G. Dale Vargason's** paper *Ernst Bacon: an exploration of his life and archive*, given at the New York State/Ontario Chapter of the Music Library Association in Syracuse, October, 2001, was chosen as one of two papers nationally by the Music Library Association for Best of Chapter 2003/2004. He will present the paper in February, 2004, at the MLA national conference in Washington D.C. This summer, Dale continued research at Syracuse University and the home of Ellen Bacon, widow of Ernst Bacon, compiling information for his upcoming book on the life and works of one of America's most prolific composers of the 20th century.

**SUNY Buffalo.** NYSO student-member **Steve Gerber's** arrangement for chamber orchestra of five movements from Jean Joseph Mouret's "Livre Second" (suites of "fanfares" and "symphonies" from 1729) was performed in April by the University at Buffalo Symphony. Gerber is a violist in the ensemble and serves as its principal librarian. He also handled all graphic production for the UB Music Library's current exhibit, "The Composer's Eye", which explores the connections between five 20th-century composers and the world of modern art.

---

## SUBSCRIBE TO NYSO-L

The Chapter's electronic mail distribution list is NYSO-L; the address is: [nyso-l@listserv.acsu.buffalo.edu](mailto:nyso-l@listserv.acsu.buffalo.edu)

To Subscribe to NYSO-L:

- Send an e-mail message to  
LISTSERV@LISTSERV.ACSU.BUFFALO.EDU
- In the body of the message, type:  
SUB NYSO-L JANE DOE
- You will receive notification that you have been added to the list.

Questions about NYSO-L may be addressed to:

Rick McRae  
Music Library  
University at Buffalo  
[mcrac@acsu.buffalo.edu](mailto:mcrac@acsu.buffalo.edu) (716) 645-2924

## FINANCIAL REPORT

May 20, 2003 through August 31, 2003

Balance in HSBC bank account on September 1, 2002	\$1,356.00
INCOME	
Membership dues	\$ 60.00
Total income	\$ 60.00
	\$ 1,416.00
EXPENSES	
Cheque printing charge (05/23/03)	\$ 16.75
Postal expenses: spring 2003 newsletter (05/29/03)	\$ 21.60
Cancelled cheque return fee (07/31/03)*	\$ 2.00
Mailing labels (08/28/03)	\$ 10.80
Total expenses	\$ 51.15
Resulting balance in HSBC bank account on August 31, 2003	\$1,364.85

\*A newly implemented service charge on the chapter's account.

---

## Chapter Officers

### Chair (through October 2003)

Ed Komara SUNY Potsdam  
[komaraem@potsdam.edu](mailto:komaraem@potsdam.edu)

### Vice-Chair/Chair-Elect

Carole Vidali, Syracuse University  
[cfvidali@mailbox.syr.edu](mailto:cfvidali@mailbox.syr.edu)

### Past Chair

Jane Subrmanian, SUNY Potsdam  
[subramjm@potsdam.edu](mailto:subramjm@potsdam.edu)

### Secretary/Treasurer

David Peter Coppen, Sibley Music Library, Eastman School of Music  
[dcoppen@esm.rochester.edu](mailto:dcoppen@esm.rochester.edu)

### Newsletter Editor (through October, 2003)

G. Dale Vargason, Sibley Music Library, Eastman School of Music  
[dvargason@esm.rochester.edu](mailto:dvargason@esm.rochester.edu)



## ATTENTION MEMBERS OF MLA CHAPTERS

If you are a member of your regional chapter, but do not belong to the national Music Library Association, consider the benefits of national membership:

- personal subscription to *Notes*, the quarterly journal of the Association, which includes book and music reviews, indexes to audio equipment reviews, record and CD reviews, articles on music bibliography and music history, current publication lists, and advertising for new publications and services in music
- subscription to the *MLA Newsletter*
- advance information on the annual conventions
- voting privileges for the Board of Directors and officers of the Association
- discount on MLA publications from the Index Series and Technical Reports
- a copy of the MLA membership directory
- the knowledge that you support a fine professional association, working to increase the visibility of music librarianship

Use the form below to join today!

### Become a Member at the National Level

#### MUSIC LIBRARY ASSOCIATION

#### Application for membership

Category: ☐ Sustaining (\$150)  
☐ Institutions (\$90)  
☐ Individual (\$75)  
☐ Retired (\$45)  
☐ Student (\$35)

Name

Mailing   
 address

Telephone at work:

home:

(Include department, division, etc, or "none" as appropriate)

Email:

Institutional affiliation:

Chapter memberships:

Please make checks payable to Music Library Association, Inc. Remittance must be in US dollars or drawn payable on a US bank. Mail to: Music Library Association, c/o A-R Editions, Inc., 8551 Research Way, Suite 180, Middleton, WI 53562. Allow 6-8 weeks for processing of new memberships. The Music Library Association is a non-profit, tax-exempt professional association.