



Twilight
SERIES®

YOU CAN NEVER HAVE TOO MUCH GOOD

RELAX. IT'S
Master
Spas®





Now is the perfect time for Twilight. Life's stresses punch no time card. The hassles and hurries that dictate your days come and go as they please. But your remedy — your relief — is ready and waiting for you. Slip in. Relax. Recharge. The beauty of owning a Twilight Series® hot tub means that you rule the best part of the day.

You can never have too much good.

Designed for the ultimate in relaxation and comfort, the Twilight Series' exclusive features and indulgent design create an unrivaled spa-like experience. Maintenance and care is minimal thanks to our exclusive Mast3rPur™ Water Management System* that provides clean, clear, fresh smelling water with less work.

Discover more about Twilight Series, because after all, you can never have too many good things in your life.

Twilight
SERIES®
BY MASTER SPAS



* Optional



STRESSRELIEF NECK AND SHOULDER SEAT™

Strategically placed jets and magnets provide the ultimate tension relieving therapy.



MASTER BLASTER® FOOT THERAPY SYSTEM

Treat your feet to soothing, massaging jet action.



HYDROTHERAPY JETS

From the full-body massage, to concentrated neck and shoulder relief, to lounge and cool-down seats, you get the spa experience that's just right for you.

Your whole being will say “Ahh.”

From the full-body massage, to concentrated neck and shoulder relief, to lounge and cool-down seats, you get the spa experience that's just right for you. Our StressRelief Neck and Shoulder Seat™ features a ledge with specially designed jets that are positioned downward—putting your neck and shoulders under the jets for the ultimate tension-relieving massage. Our exclusive Master Blaster® Foot Therapy System uses dual jet clusters with 28 total individual nozzles designed to rejuvenate your body through an encompassing foot massage. When you feel the stress relieving power of all our hydrotherapy jets in each ergonomically designed seat and lounge, you'll wonder how you lived without it.

Master Force™ Bio-Magnetic Therapy System

Used for centuries to help relieve pain, improve circulation, reduce swelling and alleviate stiffness, magnetic therapy is being reborn in the world of modern medicine. More doctors and physical therapists now use

magnetic therapy for the treatment of back problems, arthritis and sports injuries. Many professional athletes use magnetic therapy for pain relief and performance enhancement.

That's why Master Spas, after extensive research and development, chose to combine the proven benefits of hydrotherapy with the pain relieving comfort of bio-magnetic therapy. Our patented Master Force™ Bio-Magnetic Therapy System applies strategically placed magnets to two pressure points behind the neck and eight throughout the shoulders, back and seat areas in our exclusive StressRelief Neck and Shoulder Seat™.





LOUNGE SEATING
Ergonomically designed to fit the contours of your body, our lounge seat will wrap you in ultimate therapeutic comfort.



DUAL-LOUNGE SEATING
The TS 87.3 features seating for five, including two lounges.



STRESSRELIEF NECK AND SHOULDER SEAT™
shown with the optional AFTERGLOW JET PACKAGE



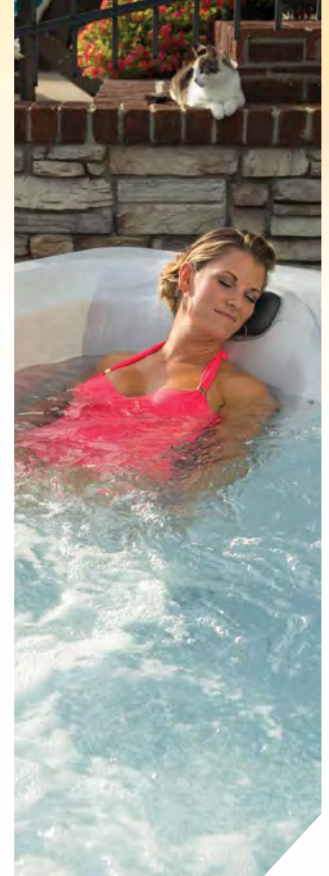
Relax. It's quiet time.

Noise Reduction System

The little things in life make such a big difference for us. It could be the smile of a young child at the end of a long day or maybe it's the fact that you hit all the green lights on your morning commute. One thing that's been more difficult to find in these busy times is a quiet, relaxing place to rejuvenate yourself. At Master Spas, we've been building luxury hot tubs for over 30 years and relaxing hundreds of thousands of happy Master Spas owners. Now the most relaxing hot tubs in the world just got even better with our exclusive Noise Reduction System (NRS).

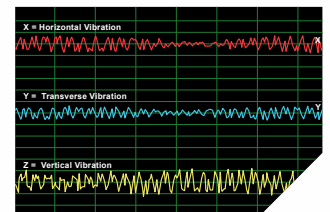
The NRS is the result of advanced engineering innovation that reduces pump and motor vibration significantly as compared to the industry standard mounting system, making it even easier to find your quiet place.

With the exclusive Noise Reduction System from Master Spas, if you listen close enough... you won't hear it.



SAVOR THE RELIEF

Our exclusive Noise Reduction System brings a quieter, calmer and more relaxing spa experience.



The industry standard has 153% more vibration than Master Spas' NRS.



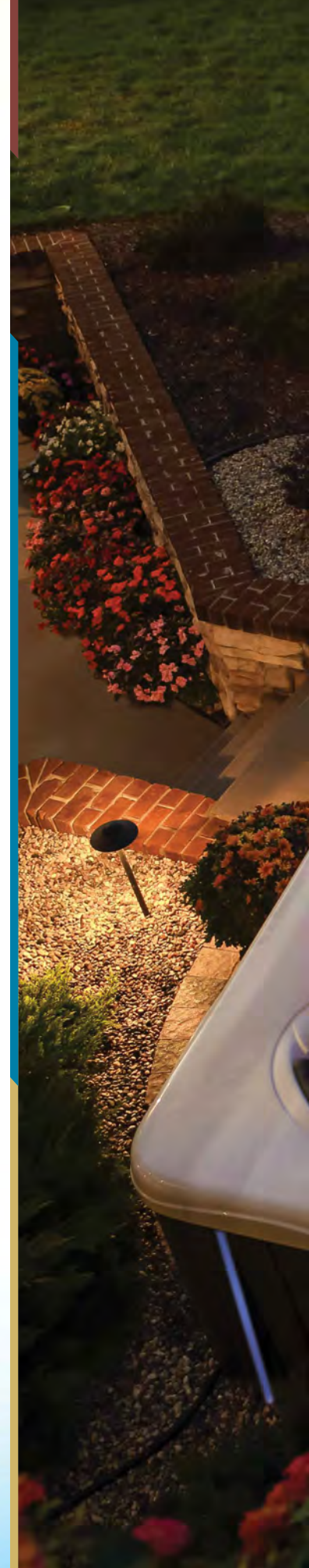
Master Spas' NRS significantly reduces pump and motor noise and vibration. The heart of the NRS is the unique motor mount developed by Master Spas' world-class engineers and our industry-leading suppliers.

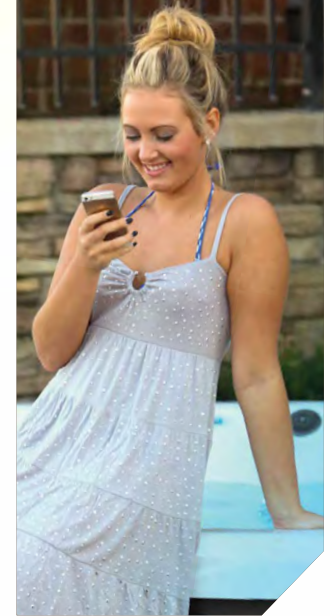


Music, laughter, family and friends

As remarkable as a Twilight Series hot tub is for relaxation and hydrotherapy, it also provides the perfect setting to bring family and friends together. Since everything about this hot tub is delightfully stress-free, you'll have peace of mind when you're entertaining. Controls offer one-touch digital ease and consistency so you can truly relax while the hot tub does all the work. The Afterglow Jet Package* brings a brilliant kaleidoscope of colors through the jets in your hot tub, while the Orion Light System™ beautifully illuminates the cascading waterfall and topside controls. Dream Lighting* adds beautiful soft streams of light to accent the exterior corners of your hot tub at night. The Fusion Air Sound System* provides the music, and brings the perfect atmosphere to your occasion. With a Twilight Series hot tub, you can live in the moment amid quality and good times.

* *Optional*





FUSION AIR SOUND SYSTEM

Two interior water resistant speakers and a subwoofer maximize the sound quality of your music. This optional system comes with a water resistant remote and connects quickly and easily through the Bluetooth of your phone or other device allowing you to stream your favorite station or playlist.



ORION LIGHT SYSTEM™

LED lights beautifully illuminate the water as well as the cascade waterfall and topside controls.



AFTERGLOW JETS

The optional Afterglow Jet Package brings a brilliant kaleidoscope of colors through the jets in your Twilight Series hot tub to further enhance your ambient experience.



Clean pure water



You want to spend your time enjoying your hot tub, not worrying about maintenance. So we created EcoPur® Charge Master Core Technology – a patent-pending exclusive filtration system that takes the work out of maintaining your hot tub. Using the same multi-stage filtration techniques as Mother Nature, EcoPur Charge relies on a unique blend of copper and zinc that naturally creates an electro-chemical reaction to eliminate many microorganisms and remove heavy metals. This dramatically reduces the amount of sanitizer needed. Best of all, it is designed so your hot tub can be ready to use at any time, without the hassles of maintenance so you can simply relax.



Mast3rPur™ Water Management System*

The synergistic blend of three proven natural sanitizers provides water quality and hot tub care not found in any other hot tub, including those with salt systems. Plus, the Mast3rPur Water Management System dramatically reduces consumption of harsh chemicals, like chlorine, while removing many heavy metals and chloramines for water that looks crystal clear, smells fresh, and has a silky feel. This innovative, exclusive benefit is due to the power of three elements:



When absorbed in water, **ozone** kills pathogens and microorganisms, destroys organics, and oxidizes non-organic contaminants.



When germicidal **UV-C light** is exposed to water it inactivates microorganisms and breaks down chloramines.

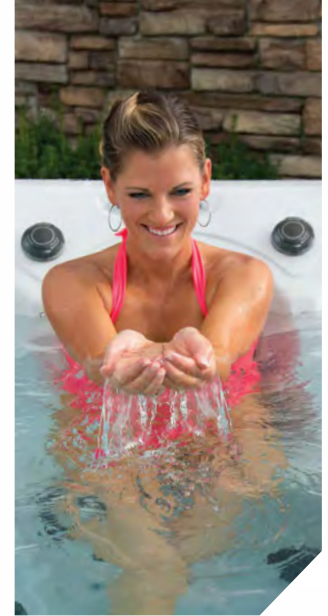


The unique combination of **copper and zinc** in the patent-pending EcoPur Charge filters creates an electro-chemical reaction to eliminate many microorganisms and remove heavy metals such as lead and mercury.

Each of the three elements are proven effective water management tools but when they are combined, their synergy makes them dramatically more effective through a chemical reaction known as Advanced Oxidation Process (AOP). AOP is superior to other systems because it produces powerful hydroxyl radicals that maximize disinfection and reduce chloramines fast and effectively. Clean, clear, fresh smelling and silkier water is available now with less work and less chemicals.**

QuietFlo Water Care System™*

What if you could fill your hot tub with fresh water every time you use it? With the QuietFlo Water Care System, you can. This amazing system moves water through your EcoPur Charge filtration system at 30 gallons per minute, 24/7. This means that a typical 7-foot hot tub will have complete filtration every 10-12 minutes.



MAST3RPUR™

Our water management system is unlike any other system available. The secret lies in a balanced blend of three proven natural sanitizers that work together to provide crystal clear, fresh smelling water that has a silky feel.



ECOPUR®

The unique combination of copper and zinc in the patent-pending EcoPur Charge filter eliminates most contaminants while greatly reducing a wide range of others, including bacteria and algae.

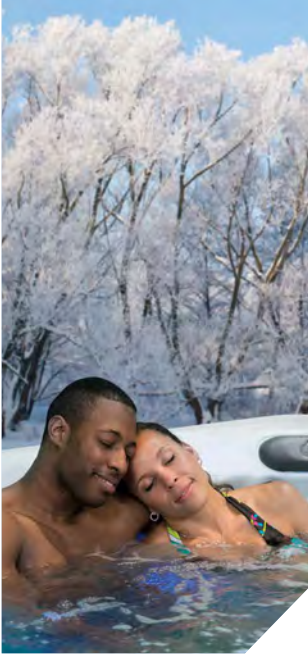


UV-C LIGHT

When germicidal UV-C light is exposed to water it inactivates microorganisms and breaks down chloramines.

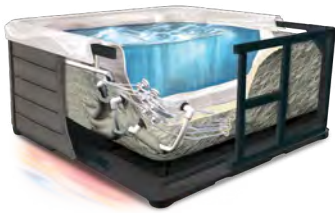
* Optional

** The Mast3rPur option is only available on hot tubs equipped with the QuietFlo Water Care System.



RELAX

Your Twilight is a superior energy-efficient hot tub, and that means savings for you and your monthly utility bill.



A THERMAL BARRIER

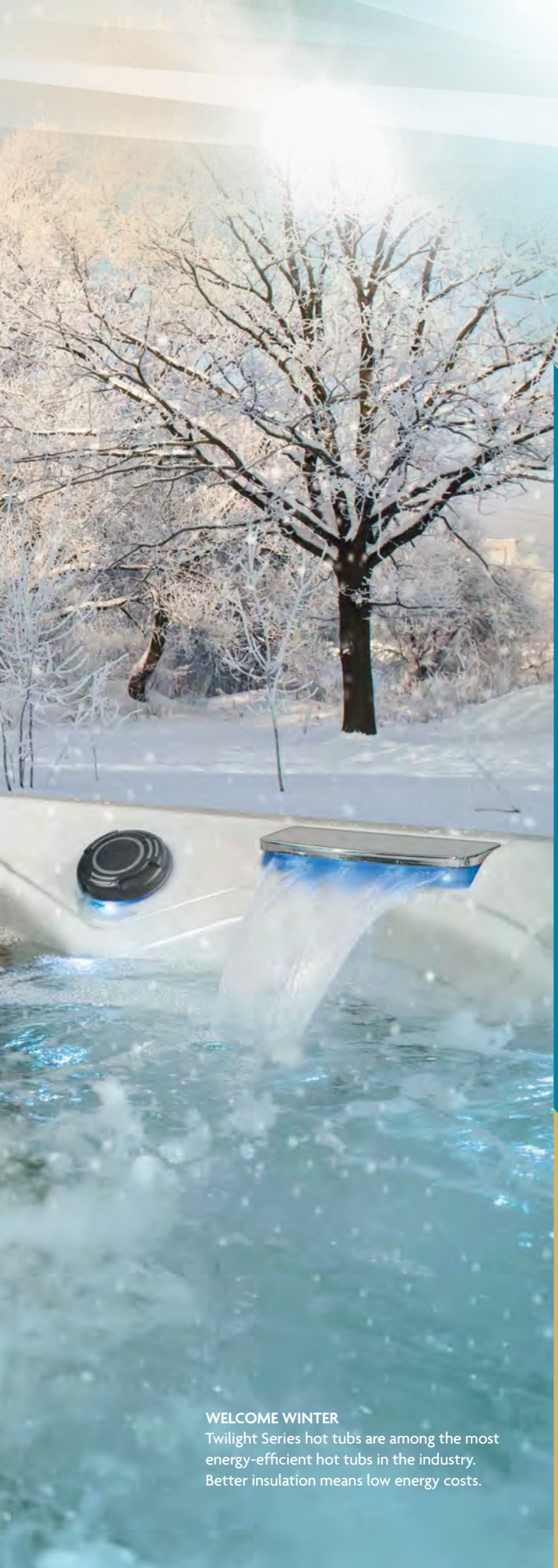
Environmentally-friendly Icynene foam insulation provides consistent, comfortable temperature inside the hot tub, while cold air is kept outside.



EXCEPTIONAL COVERS

Safety, protection and energy efficiency are all key components of our exclusive UL certified covers. Constructed using top grade marine vinyl with UV protection and high density foam, these covers lock heat in and last a long time.





Easy to own, easy to enjoy

Energy Efficient

Environmentally-friendly Icynene foam insulation makes Twilight Series hot tubs among the most energy-efficient hot tubs in the industry. The Icynene Insulation System expands to 100 times its initial volume in seconds to insulate and air-seal the hot tub. The resulting blanket of soft foam insulation forms a continuous thermal barrier that eliminates cold spots and significantly reduces energy costs. A consistent, comfortable temperature is maintained inside the hot tub, while cold air is kept outside; preventing condensation, mold and mildew. Unlike urethane foam-based systems, which lose half their R value in as little as 2 years, Icynene maintains its insulation value for the life of your Twilight.

Every Twilight Series hot tub is built to not only meet but exceed any stringent energy efficiency regulations. All resulting in what really matters – a superior energy-efficient hot tub and savings for you and your monthly utility bill.

WELCOME WINTER

Twilight Series hot tubs are among the most energy-efficient hot tubs in the industry. Better insulation means low energy costs.



Premium Options



FUSION AIR SOUND SYSTEM

Two interior water resistant speakers and a subwoofer maximize the sound quality of your music. The Fusion Air Sound System comes with a water resistant remote and connects quickly and easily

through the Bluetooth of your phone or other device allowing you to stream your favorite station or playlist. With this system, you can even stream shows or movies from the comfort of your hot tub using your tablet in a waterproof case, and our heavy duty suction stand* to mount it on the edge....turning your hot tub into a “cinematic” experience.

WI-FI MODULE The integrated Wi-Fi module works with a spa control app so you can remotely control how your hot tub operates, including the lighting, water temperature and running massage pumps. This enables you to set the mood of your hot tub from the convenience of your Apple® or Android™ device prior to entering.

QUIETFLO WATER CARE SYSTEM™ Our advanced energy-efficient circulation pump moves water through your EcoPur® Charge filtration system at 30 gallons per minute, 24/7.

MAST3RPUR™ WATER MANAGEMENT SYSTEM A synergistic blend of three proven natural water sanitizers combine to be dramatically effective through a chemical reaction known as Advanced Oxidation Process. This results in clean, clear, fresh smelling, and silkier water. The Mast3rPur™ option is only available on hot tubs equipped with the QuietFlo Water Care System.



AFTERGLOW JET PACKAGE Additional LED lighting illuminates the larger crystal-like jets in your hot tub to compliment your ambient experience.

DREAM LIGHTING Beautiful soft streams of light accent the exterior corners of your hot tub at night.**

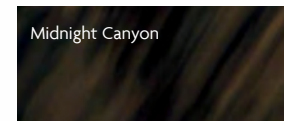
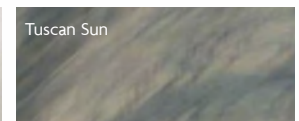
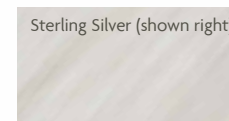
VAC-FORMED ABS PAN BOTTOM The frame enhanced with a vac-formed, high density ABS base helps keep the heat in and unwanted pests out.

Your Colors

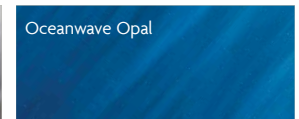
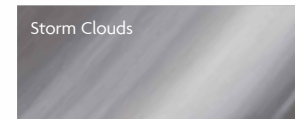
Match the color of your spa with the skirting of your choice for a distinctive combination that's truly your own. DuraMaster Premium™ skirting is made of high-impact, weatherable polymer. This skirting is so durable, that it comes with a **lifetime** warranty. MasterTech™ Deluxe skirting features authentic wood grain patterns for a rich, three-dimensional look. For ultimate luxury, choose the convincing DreamStone™ synthetic skirting, with the look of contemporary stacked stone and chestnut stained barrel wood corners.

SHELL OPTIONS

Standard Shell Colors

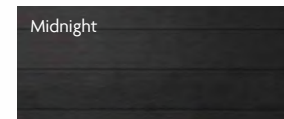
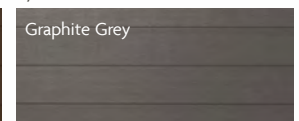
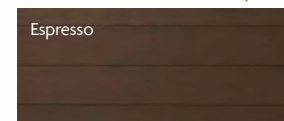


Optional Shell Colors

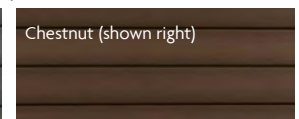
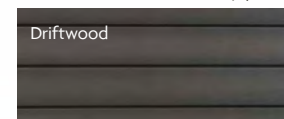


SKIRTING OPTIONS

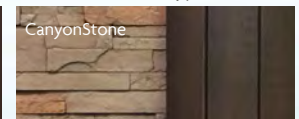
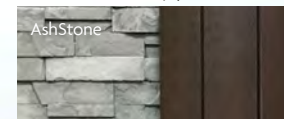
DURAMASTER PREMIUM™ (standard)



MASTERTECH™ DELUXE (optional)



DREAMSTONE™ (optional for 7ft and 8ft hot tubs only)



*Optional **Dream Lighting is not available with DreamStone Skirting.





TWILIGHT SERIES 8.2



Seating Capacity	6
Dimensions	94"x 94"x 38" (239 cm x 239 cm x 97 cm)
Gallons	380 (1 438 L)
Weight (Dry/Full)	1,065 lbs (483 kg) / 5,345 lbs (2 424 kg)
Power Requirement	240 V / 50 Amp
Pumps	2
Number of Jets	44 Jets (2 Master Blasters®)
Water Features	3
Filtration	EcoPur® Charge
LED Lighting	Orion Light System™
Exclusive Features	Master Force™ Bio-Magnetic Therapy System Noise Reduction System
Premium Options	Fusion Air Sound System Wi-Fi Module QuietFlo Water Care System™ Mast3rPur™ Water Management System Afterglow Jet Package Dream Lighting Vac-formed ABS Pan Bottom
Listing Number	5700



TWILIGHT SERIES 8.25



Seating Capacity	7
Dimensions	94"x 94"x 38" (239 cm x 239 cm x 97 cm)
Gallons	395 (1 495 L)
Weight (Dry/Full)	1,100 lbs (499 kg) / 5,690 lbs (2 581 kg)
Power Requirement	240 V / 50 Amp
Pumps	2
Number of Jets	47 Jets (2 Master Blasters®)
Water Features	2
Filtration	EcoPur® Charge
LED Lighting	Orion Light System™
Exclusive Features	Master Force™ Bio-Magnetic Therapy System Noise Reduction System
Premium Options	Fusion Air Sound System Wi-Fi Module QuietFlo Water Care System™ Mast3rPur™ Water Management System Afterglow Jet Package Dream Lighting Vac-formed ABS Pan Bottom
Listing Number	7700





TWILIGHT SERIES 7.2



Seating Capacity	6
Dimensions	84" x 84" x 38" (214 cm x 214 cm x 97 cm)
Gallons	305 (1 155 L)
Weight (Dry/Full)	900 lbs (408 kg) / 4,555 lbs (2 066 kg)
Power Requirement	240 V / 50 Amp
Pumps	2
Number of Jets	36 Jets (2 Master Blasters®)
Water Features	2
Filtration	EcoPur® Charge
LED Lighting	Orion Light System™
Exclusive Features	Master Force™ Bio-Magnetic Therapy System Noise Reduction System
Premium Options	Fusion Air Sound System Wi-Fi Module QuietFlo Water Care System™ Mast3rPur™ Water Management System Afterglow Jet Package Dream Lighting Vac-formed ABS Pan Bottom
Listing Number	5500



TWILIGHT SERIES 7.25



Seating Capacity	7
Dimensions	84" x 84" x 38" (214 cm x 214 cm x 97 cm)
Gallons	305 (1 155 L)
Weight (Dry/Full)	935 lbs (424 kg) / 4,775 lbs (2 166 kg)
Power Requirement	240 V / 50 Amp
Pumps	2
Number of Jets	36 Jets (2 Master Blasters®)
Water Features	1
Filtration	EcoPur® Charge
LED Lighting	Orion Light System™
Exclusive Features	Master Force™ Bio-Magnetic Therapy System Noise Reduction System
Premium Options	Fusion Air Sound System Wi-Fi Module QuietFlo Water Care System™ Mast3rPur™ Water Management System Afterglow Jet Package Dream Lighting Vac-formed ABS Pan Bottom
Listing Number	6400



TWILIGHT SERIES 87.3



Seating Capacity	5
Dimensions	84"x 94"x 38" (214 cm x 239 cm x 97 cm)
Gallons	310 (1 173 L)
Weight (Dry/Full)	1,025 lbs (465 kg) / 4,540 lbs (2 059 kg)
Power Requirement	240 V / 50 Amp
Pumps	3
Number of Jets	49 Jets (2 Master Blasters®)
Water Features	3
Filtration	EcoPur® Charge
LED Lighting	Orion Light System™
Exclusive Features	Master Force™ Bio-Magnetic Therapy System Noise Reduction System
Premium Options	Fusion Air Sound System Wi-Fi Module QuietFlo Water Care System™ Mast3rPur™ Water Management System Afterglow Jet Package Dream Lighting Vac-formed ABS Pan Bottom
Listing Number	1450



TWILIGHT SERIES 6.2



Seating Capacity	5
Dimensions	78"x 78"x 34" (199 cm x 199 cm x 87 cm)
Gallons	250 (946 L)
Weight (Dry/Full)	840 lbs (381 kg) / 3,850 lbs (1 746 kg)
Power Requirement	240 V / 50 Amp
Pumps	2
Number of Jets	30 Jets (1 Master Blaster®)
Water Features	2
Filtration	EcoPur® Charge
LED Lighting	Orion Light System™
Exclusive Features	Master Force™ Bio-Magnetic Therapy System Noise Reduction System
Premium Options	Fusion Air Sound System Wi-Fi Module QuietFlo Water Care System™ Mast3rPur™ Water Management System Afterglow Jet Package Dream Lighting
Listing Number	5300





TWILIGHT SERIES 67.25



Seating Capacity	4-5
Dimensions	70" x 84" x 34" (178 cm x 214 cm x 87 cm)
Gallons	245 (927 L)
Weight (Dry/Full)	760 lbs (345 kg) / 3,730 lbs (1 692 kg)
Power Requirement	240 V / 50 Amp
Pumps	2
Number of Jets	28 Jets (1 Master Blaster®)
Water Features	1
Filtration	EcoPur® Charge
LED Lighting	Orion Light System™
Exclusive Features	Master Force™ Bio-Magnetic Therapy System Noise Reduction System
Premium Options	Fusion Air Sound System Wi-Fi Module QuietFlo Water Care System™ Mast3rPur™ Water Management System Afterglow Jet Package Dream Lighting
Listing Number	8000

TWILIGHT SERIES 240



Seating Capacity	3
Dimensions	78" x 78" x 34" (199 cm x 199 cm x 87 cm)
Gallons	205 (776 L)
Weight (Dry/Full)	715 lbs (324 kg) / 2,980 lbs (1 352 kg)
Power Requirement	240 V / 50 Amp
Pumps	2
Number of Jets	26 Jets (1 Master Blaster®)
Water Features	1
Filtration	EcoPur® Charge
LED Lighting	Orion Light System™
Exclusive Features	Master Force™ Bio-Magnetic Therapy System Noise Reduction System
Premium Options	Fusion Air Sound System Wi-Fi Module QuietFlo Water Care System™ Mast3rPur™ Water Management System Afterglow Jet Package Dream Lighting
Listing Number	6200



MASTER SPAS CARES FOR KIDS

Master Spas and our dealers were part of building a new elementary school in 2013, and a new high school in 2018 for the NAZ Children's Centre in Rose Hall, Jamaica. This specialized Christian school does an outstanding job educating children as well as working with children with developmental problems. With every Master Spas swim spa sold, a donation will be made to the NAZ Children's Centre Scholarship Fund.



In our hometown, we are honored to partner with the Crossing School of Business and Entrepreneurship, a faith-based high school that turns at-risk youth into tomorrow's leaders. Master Spas provides operational space for vocational training and a micro business.



MASTER SPAS CARES FOR CURES

Master Spas is pleased and proud to assist two foundations dedicated to finding and funding the cures for life-hindering diseases.

Along with the Lupus Foundation of America, we have initiated a campaign to help raise awareness and find a cure for this debilitating disease that affects more than 1.5 million Americans. Part of the profit from each "Lights for Lupus" spa will go to the Lupus Foundation. Together, we can fund and find the cure.



Master Spas has joined forces with the Vera Bradley Foundation for Breast Cancer to eradicate breast cancer, a life-threatening disease, by providing financial support for research and research-related projects.



For more information, visit MasterSpas.com/cares



TWILIGHT SERIES HOT TUBS ARE MANUFACTURED BY MASTER SPAS, AN AWARD WINNING COMPANY YOU CAN TRUST.



Master Spas® reserves the right to change product specifications or features without notice. Master Spas is a manufacturer of hot tubs and related products, and we stand behind every product we produce pursuant to those representations which are stated in our written limited warranty. Your dealer is an independent businessperson or company and not an employee or agent of Master Spas, LLC. We cannot and do not accept any responsibility or liability for any other representations, statements or contracts made by any dealer beyond the provisions of our written limited warranty. Master Spas, Twilight Series, Master Blaster, and EcoPur are registered trademarks of Master Spas, LLC. EcoPur Patent US 6,962,660 B2. Master Force Bio-Magnetic Therapy System Patent US 6,575,892 B1.