

Quick Start Guide for Virtual Practice-Labs

Verify system requirements


Please review the Hardware, Operating Systems, Networking, Software and Browser requirements to ensure that the labs will work properly the first time. The system requirements needed to run a lab are outlined on the support page here: <http://www.practice-labs.com/support/#/userguide/system-requirements>

Browse the available help

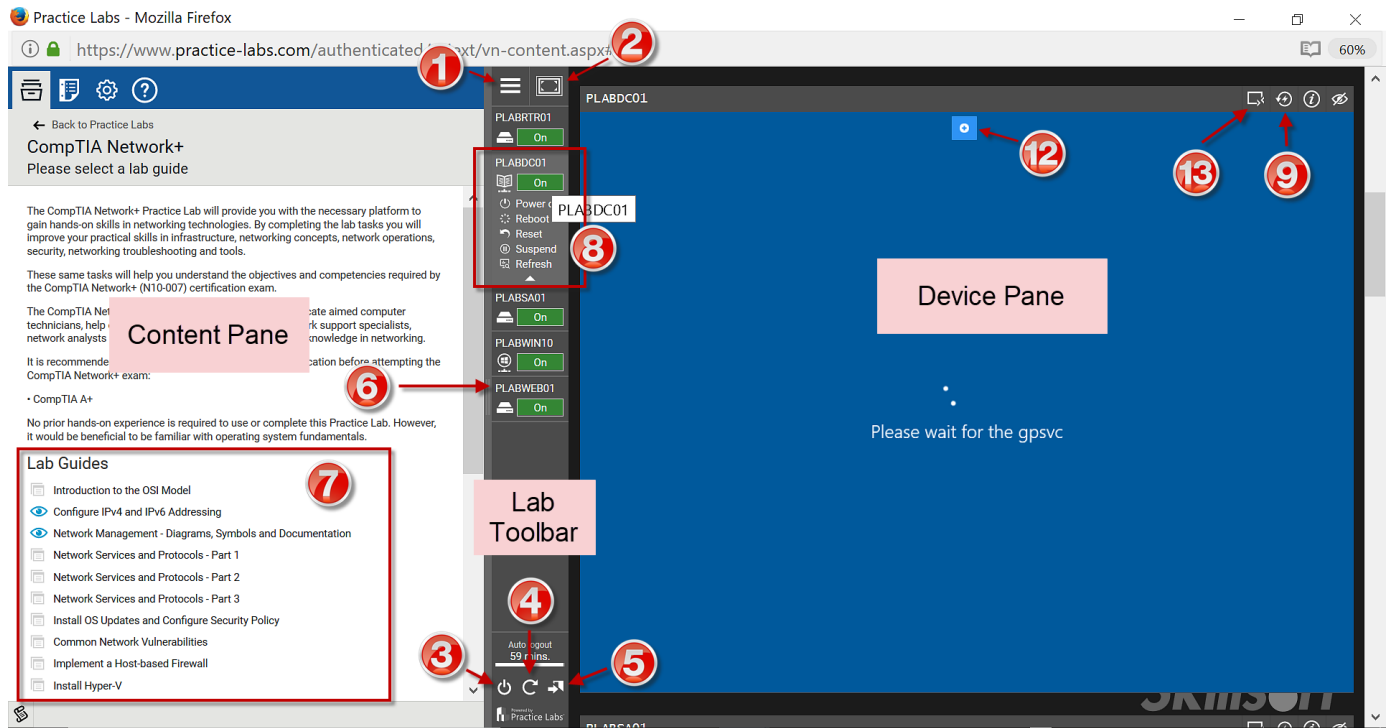
In addition to accessing help from within a lab, Virtual Practice-Labs' provides support videos and online help externally. Below are quick links to the videos and online help. If you are unable to view the support videos hosted on vimeo, check with your learning leader that *vimeo.com is white-listed by your organization. Videos are also best viewed using Firefox.

- Practice Labs User Guide Online Help: <http://www.practice-labs.com/support/#/userguide>
(You may have to copy the URL into your browser if you get a 404 error)
- Skillsoft Virtual Practice Labs Overview Video: <https://vimeo.com/195495004>
- Practice Labs Getting Started Video: <https://vimeo.com/195494894>
- Managing Practice Labs UI Layout Video: <https://vimeo.com/195494874>
- Practice Labs Device Management Video: <https://vimeo.com/195494969>
- Practice Labs Personal Settings Video: <https://vimeo.com/195494987>




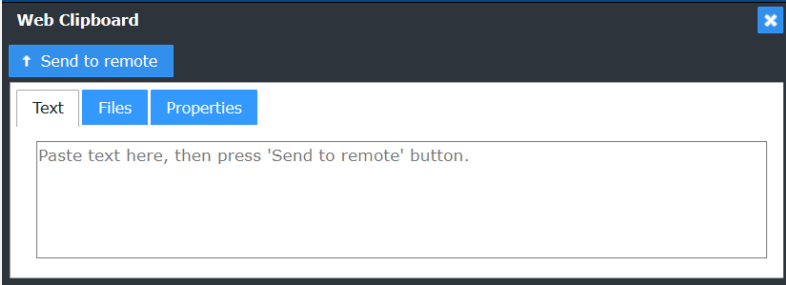


Getting started

1. Once you have launched a lab and accepted any terms and conditions, the basic layout consists of a Content Pane on the left, a Lab Toolbar in the center and a Device Pane on the right.
 - By scrolling up and down in the Device Pane you will see the console/terminal windows for all devices.
 - The Content Pane may display various Lab Guides  that come with the lab.

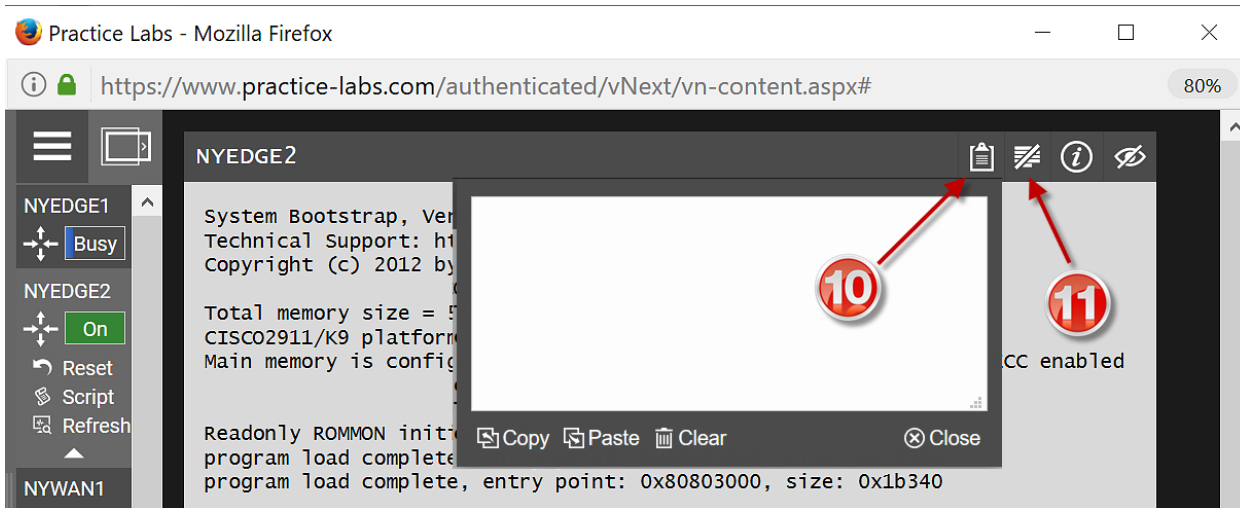
The following graphic depicts a Windows-based setup.



1	Hides the Content Pane.
2	Resizes the Devices Pane to fit your screen better; you must also adjust the Content Pane using the left edge 6 of the Lab Toolbar.
3	Powers on all devices at once.
4	Resets all devices back to their state prior to your login, losing any changes you have made during the session.
5	Logout
8	Clicking on a specific device on the Lab Toolbar will display its console window/terminal in the Device Pane. Placing your cursor over any device on the Lab Toolbar will reveal additional power options, such as power off, rebooting the device, resetting the device back to its original state, suspending or refreshing the device.

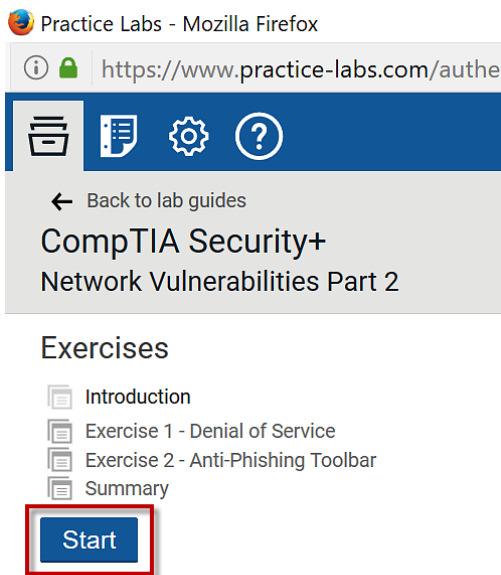
9	<p>“Reconnect to device”  relaunches the session to the remote server and re-establishes a connection to the Device.</p>
12	<p>Expanding the plus toggle icon  reveals additional options:</p>  <ul style="list-style-type: none"> • A Ctrl-Alt-Del button for unlocking a screen • A virtual Keyboard • A Clipboard for sending text pasted from a local machine or files from a local machine to an area you click on and paste into, using Ctrl+v, for the device. 
13	<p>Switches between Console Access  and Remote Desktop .</p> <p>Console Access connects you directly to the Machine Console ID, bypassing the Remote Desktop IP address.</p> <p>Remote Desktop connects you to the Windows device over remote desktop protocol (default connection method).</p>

The following graphic depicts a Cisco-based setup.



10	Cisco clipboard provides access to Copy/Paste functions to/from the Cisco Terminals.
11	Cisco clear terminal button. Clears the terminal of text input (clear screen).

- To get started, select any Lab Guide (shown as **7** in step 1) -- regardless of order. When you click into a Lab Guide, the exercises are presented in sequential order. Click **Start** to begin a Lab Guide. To return back to the list of lab guides, click **← Back to lab guides**.



3. **Before beginning a Lab Guide we recommend powering up all devices before proceeding.** Press the power button (3 in step 1) and wait for all devices on the Tools Bar to turn green and say "On". Since these devices use real equipment in an offsite datacenter, their boot-up delay will mirror real equipment.
4. For certification exam-focused labs, the Exercises in a Lab Guide will walk you through practical, hands-on aspects of any exam objectives. For CodeX programming labs, the Exercises in a Lab Guide will provide an embedded, instructional video that will take you through a coding assignment as well as provide the solution.

Once you have completed and reached the end of an Exercise, select the Next button 1 to move forward to the next Exercise.

You may also self-report the completion of a Lab Guide by selecting the 2 Done button.

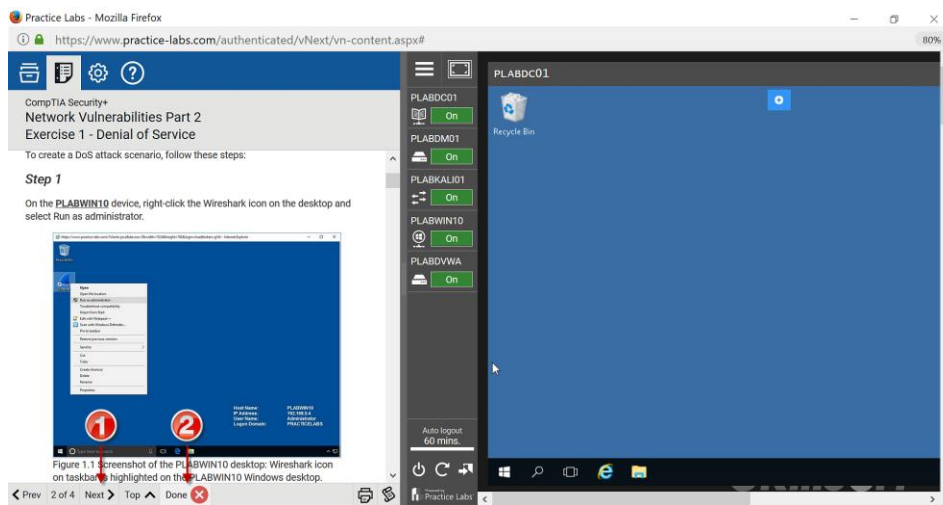
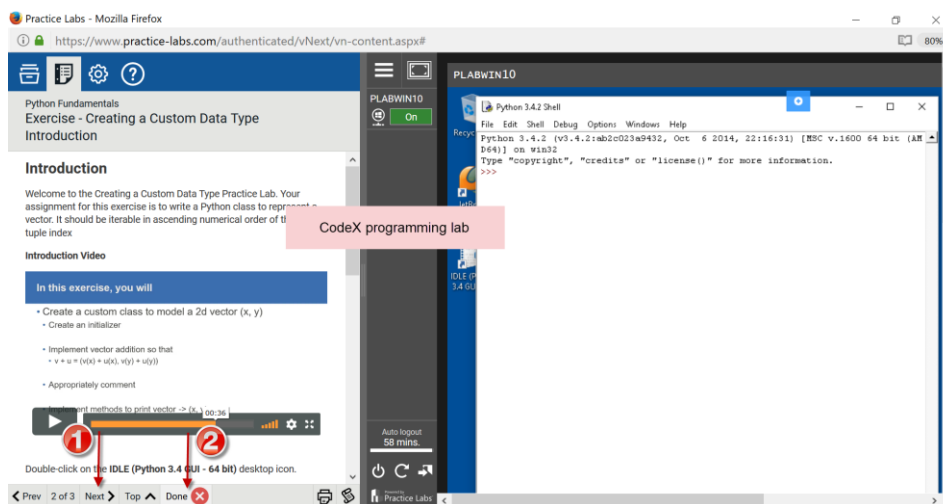

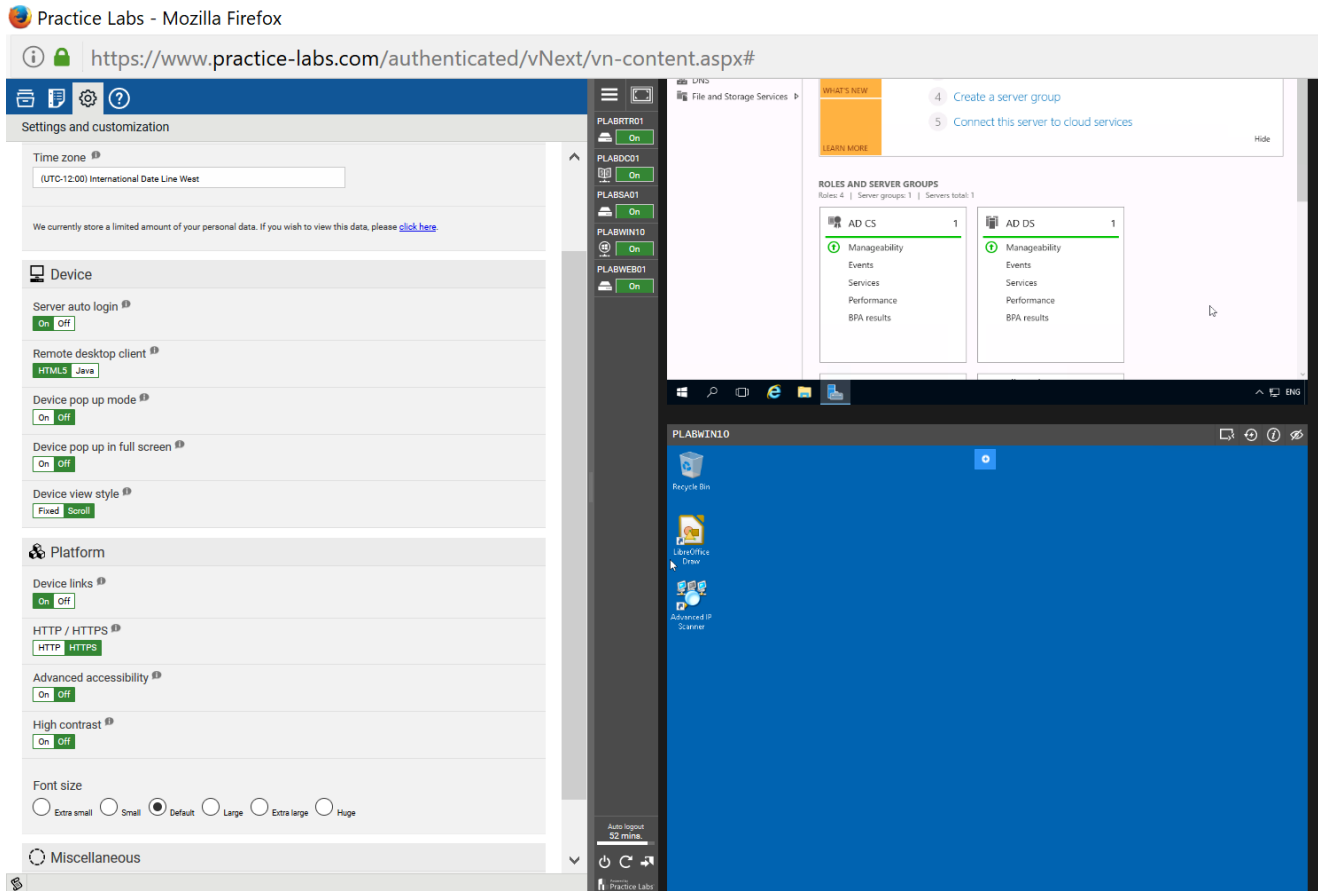



Figure 1.1 Screenshot of the PLABWIN10 desktop: Wireshark icon on taskbar highlighted on the PLABWIN10 Windows desktop.



5. **Settings.** Customize your environment via the Settings button on the top toolbar. The Settings and customization view enables you to change options such as Device Settings (i.e. use HTML or Java, Set Server Auto Login ON) and Platform settings (i.e. font size, accessibility, high contrast).

- Any configurations are saved even after exiting your Skillsoft subscription.
- Select the information icon  besides a setting to learn more about it.



6. **Help.** Additional tutorials and help materials are accessible from within the Virtual Practice-Labs environment. You can view and access them quickly by selecting the question mark  on the top toolbar. This view also contains system requirements, software requirements and legal information.

In addition to Skillsoft support (support@skillsoft.com), you may also contact Skillsoft's Practice IT vendor to address further troubleshooting and technical questions (support@practice-labs.com).