

YOUR COMMUNITY YOUR FUTURE

GUIDE FOR INTERNATIONAL STUDENTS 2020-2021

INTO@OREGON STATE UNIVERSITY

OSU DIRECT ENTRY

OSU is now providing comprehensive support and services to international students at the undergraduate and graduate levels to ensure success in your first terms on campus.



Oregon State
University



INTO OR

START AT OREGON STATE UNIVERSITY

TOP 1%

GLOBAL UNIVERSITY
Center for World University Rankings 2019

#63

BEST PUBLIC UNIVERSITY
Times Higher Education 2019

770 JOBS CREATED
82 COMPANIES LAUNCHED
through the OSU Advantage Business Accelerator since 2013
University Data 2019

TOP 15%

BEST PAID GRADUATES IN THE US
PayScale College Salary Report 2019

#41

TOP RESEARCH UNIVERSITY
Best College Reviews 2019

1 of 94 Public Universities
with Carnegie Foundation's Tier 1 Highest Research Activity
Carnegie Classification of Institutions of Higher Education

#3

MOST POPULAR COMPUTER SCIENCE PROGRAM
College Factual 2019

#1

BEST CITY TO LIVE IN OREGON
Chamber of Commerce 2019



TOP PROGRAMS



UNDERGRADUATE

#23 AGRICULTURAL SCIENCES
QS World University Rankings 2019

#37 EARTH AND MARINE SCIENCES
QS World University Rankings 2019

#67 ENGINEERING
U.S. News & World Report 2019

#108 BUSINESS
U.S. News & World Report 2019

GRADUATE

#5 HUMAN DEVELOPMENT AND FAMILY STUDIES
College Factual 2019

#7 ROBOTICS
Analytics Insight 2019

#8 FORESTRY
College Factual 2019

#11 NUCLEAR ENGINEERING
U.S. News & World Report 2019

#40 ENVIRONMENTAL ENGINEERING
U.S. News & World Report 2019

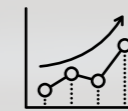
#46 CIVIL ENGINEERING
U.S. News & World Report 2019

#55 ELECTRICAL ENGINEERING
U.S. News & World Report 2019

#61 COMPUTER SCIENCE
U.S. News & World Report 2019

#73 BIOLOGICAL/AGRICULTURAL ENGINEERING
U.S. News & World Report 2019

EMPLOYABILITY



1 in 5

International students gained valuable work experience through internships or practical training
University Data 2018

OSU'S GRADUATES have gained employment with:

Adidas	Deloitte	Oracle
Boeing	H&M	Pixar
Coach	HP	SpaceX
Columbia Sportswear	Intel	Target
Dell Inc.	Nike	

"I did a lot of research before starting my master's. I remember I looked at companies like Mentor Graphics, Intel, Lime Research—I can't even name all of them. I was looking at those companies and what kind of students they [are looking] for. I got in touch with a few student[s] on LinkedIn that went to Oregon State [who later worked] at Intel. I got their input of what it was like going to school [at OSU] and what kind of career opportunities [are available] right after."

KARTHIK, INDIA
MEng in Electrical and Computer Engineering,
Class of 2016
Lead System Install Engineer
at ASML San Diego CA



AT A GLANCE

- Founded: 1868
- Campus: Corvallis, OREGON
- City Population: 56,000
- Campus Size: 400 acres
- Enrollment: 30,986
- International Students: 3,556
- Countries Represented: 112
- Bachelor's: 200+
- Master's/PhD: 80+
- Additional Campus: Bend, OREGON

RESEARCH

\$441M
IN RESEARCH FUNDING
University Data 2019

LAND, SEA, SPACE AND SUN GRANT

As a leader in climate change research, OSU is one of only two (alongside Cornell University) US universities to have Land, Sea, Space and Sun Grant designations. This means OSU is involved with research in all four areas.





Tair, Israel
BS in Computer Science,
Class of 2018
Software Engineer at Aspen
Capital, Beaverton, OR



Ying, China
MEng in Civil (Structural)
Engineering, Class of 2015
Structural Project engineer for
DCI Engineers, Portland, OR



Ananiya, Ethiopia
BS in BioResource Research
with options in biotechnology
and toxicology and a minor in
chemistry, Class of 2018
PhD Candidate in
Pharmaceutical Sciences,
Class of 2023
Undergraduate Research
Assistant at Dr. Taifo
Mahmud's Lab
in the College of Pharmacy
Oregon State University,
Corvallis, OR



Aldi, Indonesia
MEng in Computer Science, Class of 2019
Information Technology Resident
at Google, San Francisco, CA

Seattle

Angela, Colombia
MPP in Public Policy, Class of 2019
Intern for Oregon Department
of State Lands, Salem, OR



Beaverton ■ Portland

■ Salem

CORVALLIS



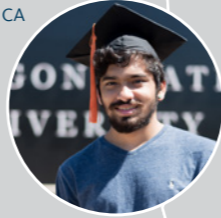
BEND



Alisha, Kazakhstan
BS in Civil Engineering, Class of 2020
Intern at ODOT, Salem, OR

San Francisco

Anand, India
BS in Computer Science, Class of 2016
Test Engineer at HP, San Diego, CA



Los Angeles

San Diego

BUILD YOUR FUTURE ON THE WEST COAST

OSU Students work all over the US and the world. See what you can do on the West Coast.

THE INTO OSU ADVANTAGE

INTO OSU is one of the oldest and most integrated Pathway programs in the US. OSU's commitment to international education is evident in the purpose-built five-story International Living-Learning Center. The center is a vibrant global hub of student life and educational activity which also houses the INTO OSU Center.

INTO OSU provides services such as:

- Personalized academic, language and cultural support
- Targeted tutoring and self-study learning support resources
- Your own academic success and personal advisor
- Comprehensive orientation with free airport pickup
- English Conversation Partner Program
- Social events and trips around Oregon
- 150 INTO OSU and OSU staff and teachers to support students



INTO OSU SUCCESS

84.8% OF ALL PATHWAY STUDENTS WERE ELIGIBLE TO PROGRESS AT OSU IN 2017-18.

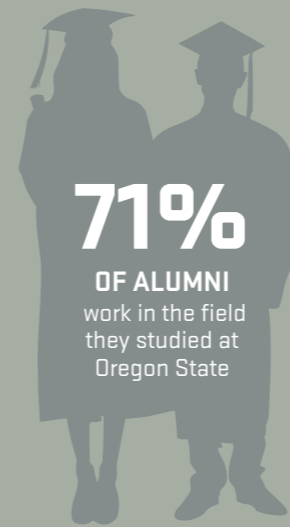
Eligible students are those who successfully completed the Pathway program and qualified for admission as degree-seeking students. Enrolled students are those who enrolled as degree-seeking students in their next term of degree study at Oregon State University.

Undergraduate and Graduate Progression Rate 2017-2018

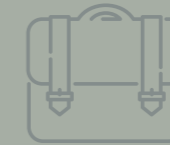
84.8%
ELIGIBLE STUDENTS

96.5%
OF ELIGIBLE STUDENTS
ENROLLED

SUCCEED IN INNOVATION NATION



71%
OF ALUMNI
work in the field
they studied at
Oregon State



518 STUDENTS
PARTICIPATING IN OPT OR CPT IN 2018

University Data 2018



#10 MOST INNOVATIVE
STATE IN THE US

Business Insider 2019



#3
OCEANOGRAPHY PROGRAM
in the World Shanghai Rankings 2018



400+
STUDENT CLUBS

#10

BEST COLLEGE TOWN
IN AMERICA

Best College Review 2019



#10

BEST BIG DATA
degree in the US

College Choice 2018

#4

BEST COLLEGE FOR
STUDYING NATURAL
RESOURCES AND
CONSERVATION
in the US

College Factual 2018



#37

IN EARTH SCIENCES

QS World University Rankings 2019



LIVING IN OREGON

Expand Your Horizons in Corvallis

- #10 Best College Town *Best College Reviews 2019*
- Free public transportation
- 45 minutes to the Pacific Ocean
- 90 minutes to Portland
- 45 minutes to Eugene Airport
- HP campus

- 30+ degrees, minors and options, including two campus-specific majors
- Computer Science with option to specialize in web and mobile software development
- 100% job placement rate
- Energy Systems Engineering

Explore the OSU-Cascades Campus

- Second campus in Bend, OR
- 17 students per class on average
- 1,259 students on campus
- 300 days of sunshine

Experience Oregon

- Silicon Forest: home to high-tech companies
- Nike Headquarters in Beaverton, OR
- No sales tax
- National Basketball Association: Portland Trail Blazers
- Major League Soccer: Timbers
- Outdoor recreation

HOUSING AND DINING

Living in the heart of Beaver Nation

Living on campus places you steps away from all the resources you need to succeed in your first year and beyond. You'll have the most convenient access to your classes, the library, dining halls and the recreation center, while living among American students in a diverse and welcoming community.

Experience a Global Village

There are a variety of affordable, convenient housing options on campus. With dining halls that feature international food and housing options with American roommates, you'll have all the comforts of home while still experiencing American life. The Global Village, a popular housing option, groups international and American undergraduate students who are passionate about cultural exchange and global experiences. Learn more at uhds.oregonstate.edu/globalvillage

LEARN MORE ABOUT OUR HOUSING OPTIONS:
www.intostudy.com/osu/housing



Living On Campus

Program	REQUIRED	NOT REQUIRED
Academic English (AE)		●
International Year One (IYO) / AE + IYO	●*	
International Direct (ID) / AE + ID	●*	
Undergraduate Transfer Program (UTP) / AE + UTP	●*	
Master's International Direct		●
Graduate Pathway (GPW) / AE + GPW		●

*Students more than one year past high school graduation are not required to live on campus.

MEAL PLANS: All on-campus housing options include a meal plan.

Live-on Requirement: All first-year undergraduate students who enroll at OSU within one year of high school graduation must live on campus. Students more than one year past high school graduation are not required to live on campus.

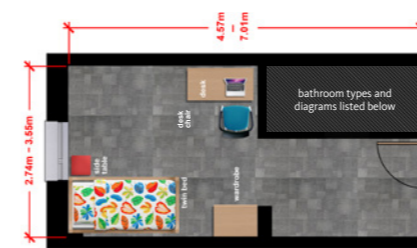
For more information on this policy, including available exemptions, visit studentlife.oregonstate.edu/first-year-experience-live-policy

Students not required to live on campus may choose to do so, but should carefully review contract length and cancellation policies.

Bedroom Types

Single Room

1 student per bedroom



Double Room

2 students per bedroom



Triple Room

3 students per bedroom



Bathroom Types

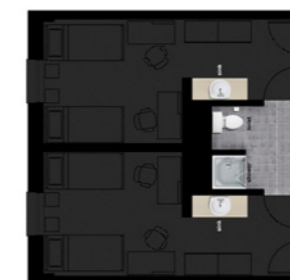
Private

Bathroom for 1 bedroom (1-2 people)



Suite-style

Bathroom for 2-3 bedrooms (2-6 people)



Shared

Bathroom for multiple bedrooms



Note: The floor plans and bathroom types may vary.

RESEARCH EXCELLENCE

For more than 150 years, students, alumni and faculty have made outstanding achievements including developing the artificial heart valve, TRIGA Reactor and wristband samplers that detect environmental chemicals.

GLUCOSE-SENSING CONTACT LENSES

The contact lens is a hypothetical application of a transparent sensor developed at OSU. The goal is to expand contact lens sensors to a range of tear fluid biomarkers, which can be used to identify a range of ocular disorders (dry eye disease, diabetic retinopathy, glaucoma, etc.), cancers (colon, prostate, breast, lung, etc.), multiple sclerosis and many other diseases.

ROBOTIC MOBILITY

Imagine if robots had legs and could walk on the same terrain as people. Agility Robotics, a company first developed at OSU, is making robotic mobility a reality. Advanced mobility could change the future by enabling shipping to be more automated and opening up new possibilities in manufacturing and production.

URSA ENGAGE

Students can apply to pursue a research or creative activity under the guidance of an OSU mentor, with an award of \$750, and mentors receive \$250 for project-related costs.

HANDS-ON BUSINESS RESEARCH

The College of Business Research Suite is outfitted with cutting-edge technology, space and design to conduct innovative research in business, market trends and consumer insights. Apply your research through entrepreneurship programs and access the C2C Marketing Lab. Students can also participate in the Advantage Accelerator, a unique program designed to assist startups in all stages of their growth. You will work directly with innovators and entrepreneurs to explore markets, develop products and obtain customers.

FACULTY SPOTLIGHT: YEONGJIN JANG

Yeongjin is an assistant professor of computer science in the Oregon State University College of Engineering's School of Electrical Engineering and Computer Science. His research focuses on computer systems security, especially for identifying and analyzing emerging attacks to computer systems for building more secure systems. In addition to his academic work, he participates in cybersecurity capture the flag (CTF) contests. He received the Black Badge award from DEFCON, as the winner (team DEFKOR) of DEFCON 23 CTF (2015) and the winner (team DEFKOR00t) of DEFCON 26 CTF (2018). He was also one of the finalists (team Disekt) at the DARPA Cyber Grand Challenge final event in 2016.



Photo by Johanna Carson, College of Engineering

YOUR CAREER STARTS HERE

It pays to be an OSU grad. OSU alumni who graduated with a bachelor's degree are in the top 15% best paid graduates in the US. *PayScale College Salary Report 2019*

GET READY FOR YOUR FUTURE

The top three attributes employers are seeking from recent graduates are*:

1. Communication skills (written)
2. Problem-solving skills
3. Ability to work in a team

Gain these soft skills in all 170 majors, including public health, business and computer science.

INTERNSHIPS DRIVEN BY INDUSTRY

OSU offers several support services to find internship placements, including MECOP which is unique to Oregon. With over 130 different companies participating in the program, MECOP places students in paid internships in the fields of engineering, tech and business with top companies like Boeing, Intel, HP and Oracle.

JOBS ON CAMPUS

There are many opportunities for OSU students with a minimum of 5,000 jobs available daily. International students are eligible to work on campus for up to 20 hours a week, earning an estimated \$8,100 to help offset your educational costs.

*National Association of Colleges and Employers 2019

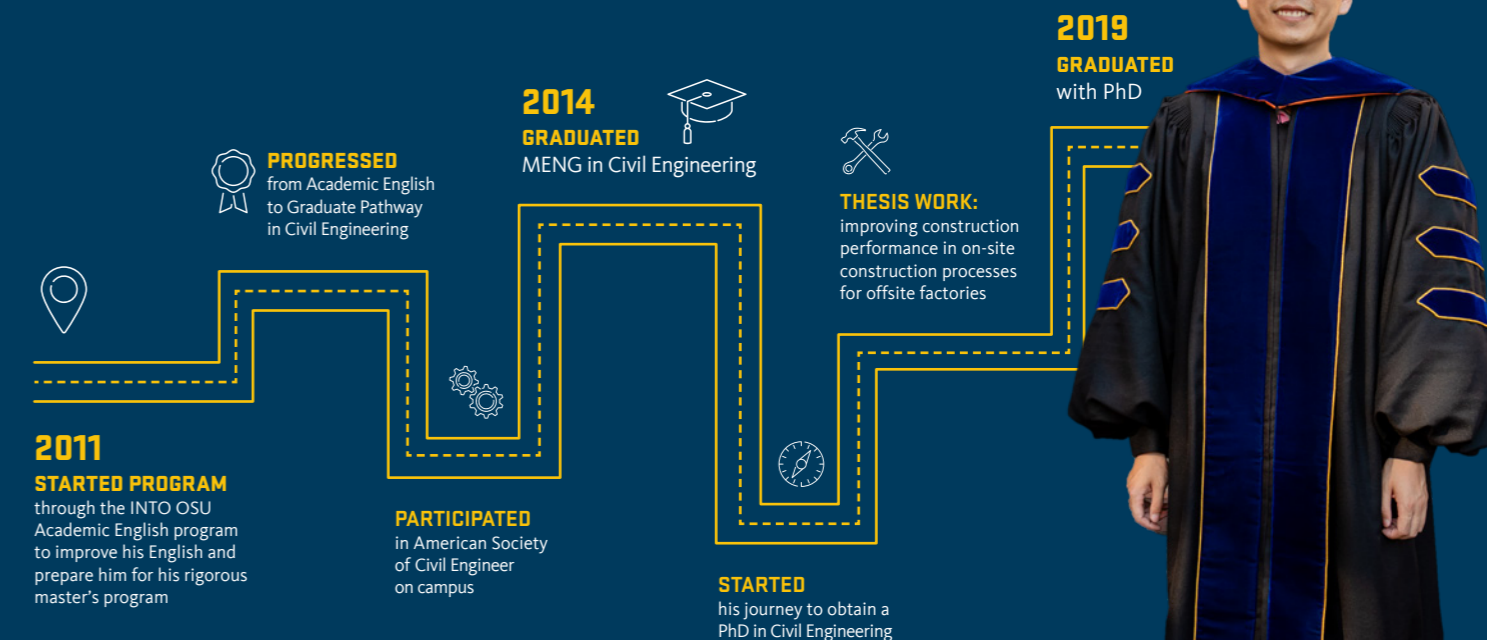


STUDENT JOURNEY

Ding, China

MEng in Civil Engineering, Class of 2014 | PhD in Civil Engineering, Class of 2019

"I got several offers from universities as a faculty position. I haven't decided which one to choose, but I will definitely be a faculty member at a university back home in China."



ACADEMIC PROGRAMS

FIND YOUR DEGREE. With a wide range of subject areas and admissions options, you can find the perfect degree for your chosen career. You can choose to apply for direct entry to the university or for a Pathway program that provides extra academic, language and cultural support. From the day you apply to the day you graduate, we are here to help you succeed every step of the way. Flip to the back cover to learn how to apply.

B = Bachelor's **M = Master's** **D = Doctorate** Indicates degree programs also available at OSU-Cascades ● Indicates an OSU degree program is available

GP Indicates a Graduate Pathway program can lead to this degree. This degree is available through direct admission. ▶ Designated STEM degree by the US Department of Homeland Security

International Year One

Indicates the undergraduate Pathway program that should be taken to progress to an undergraduate academic program. This program is also available through direct admission.

AP All Undergraduate Pathways	EN Engineering	FO Forestry	PP Public Policy
BU Business	ES Exercise and Sport Science	GE General	PS Psychology
CS Computer Science	EV Environmental Economics and Policy	MA Mathematics	SC Science
DA Design, Apparel and Merchandising Management	FS Food Science and Technology	NR Natural Resources and Renewable Materials	WG Women and Gender Studies

New Direct Routes

INTERNATIONAL DIRECT

All direct undergraduate degrees now have customized support and enhanced student experience for first year success.

→ For more information see pages 12-15

MASTER'S INTERNATIONAL DIRECT

MEng Electrical and Computer Engineering and MEng Computer Science now have enhanced first-term support.

→ For more information see page 17

	B	M	D
College of Agricultural Sciences			
Agricultural and Food Business Management	SC		
Agricultural Education		●	
Agricultural Sciences	SC		
Animal Sciences [BS options: Animal Behavior, Animal BioHealth/Pre-Professional, Animal Production, Equine, Rangeland Science]	SC	●	●
Applied Economics		GP	●
▶ Bioresource Research [BS options: Animal Reproduction and Development; Applied Genetics; Bioproducts and Bioenergy; Biotechnology; Climate and Biosystems Modeling; Environmental Chemistry; Food Quality; Genomics/Bioinformatics; Pest Biology and Management; Plant Growth and Development; Sustainable Ecosystems; Toxicology; Water Resources]	SC		
▶ Botany [BS options: Comprehensive Botany; Customizable: Ecology, Evolution, and Conservation; Molecular, Cellular, and Genomic Botany; Plant Pathology]	SC		
▶ Botany and Plant Pathology		●	●
▶ Crop and Soil Science [BS options: Agronomy; Plant Breeding; Genetics; Soil Science]	SC		
▶ Crop Science [MS, PhD options: Entomology; Plant Breeding and Genetics]		●	●
▶ Entomology		●	●
Environmental Economics and Policy [BS options: Environmental Economics, Environmental Policy, General]	EV		
Fisheries and Wildlife Administration		●	
Fisheries and Wildlife Sciences	SC		
Fisheries Sciences		●	●
▶ Food Science and Technology [BS options: Enology and Viticulture; Fermentation Science; Food Science]	FS	●	●
▶ Horticulture [BS options: Ecological Management of Turf, Landscape and Urban Horticulture; General Horticulture; Horticultural Research; Plant Breeding and Genetics; Sustainable Horticultural Production; Therapeutic Horticulture; Viticulture and Enology] [MS, PhD options: Entomology; Plant Breeding and Genetics]	NR	●	●
Rangeland Ecology and Management		●	●

	B	M	D
▶ Rangeland Sciences [BS options: Habitat Management; Pastoral Systems of the World; Sustainable Livestock Ranching; Sustainable Rangeland Ecosystem Stewardship]	NR		
▶ Soil Science [PhD options: Entomology; Plant Breeding and Genetics]		●	●
Sustainability	SC		
▶ Toxicology		●	●
▶ Wildlife Science		●	●

	B	M	D
College of Business			
Accountancy [BS options: Accounting Information Systems; International Business]	BU	●	
Apparel Design	DA		
▶ Business [MSB options: Financial Planning; Marketing Insights and Analytics; Supply Chain Analytics]		GP	
Business Administration/MBA [BA, BS options: Entrepreneurship for Business Majors; Family Business; General Business (also at OSU-Cascades); Hospitality Management (also at OSU-Cascades); International Business (also at OSU-Cascades); Merchandising Management; Supply Chain and Logistics Management] [MBA, PhD options: Accounting (PhD only); Business Analytics; Corporate Finance; Human Resource Management; Innovation Management; Marketing; Organizational Leadership; Research Thesis; Strategy, Entrepreneurship, and Innovation (PhD only); Supply Chain and Logistics Management]	BU	GP	●
Business Information Systems [BA, BS option: International Business]	BU		
Design and Innovation Management	DA		
Finance [BA, BS option: International Business]	BU		
Hospitality Management (OSU-Cascades Only)	BU		
Interior Design	DA		
Management [BA, BS option: International Business]	BU		
Marketing [BA, BS option: International Business]	BU		

	B	M	D
College of Earth, Ocean and Atmospheric Sciences			
▶ Earth Sciences [BS options: Climate Science, Geology, Ocean Science]	SC		
Environmental Sciences [BS options: Alternative Energy; Applied Ecology; Aquatic Biology; Chemistry and the Environment; Conservation, Resources, and Sustainability; Earth Systems; Environmental Agriculture; Environmental Policy and Economics; Environmental Science Education; Environmental Water Resources]	SC		
Geography		●	●
Geography and Geospatial Science	SC		
Geology (MA, MS, PhD)		●	●
▶ Marine Resource Management (MA, MS)		●	
▶ Ocean, Earth and Atmospheric Sciences		●	●

	B	M	D
College of Education			
Adult and Higher Education [EdD, PhD options: Community College Leadership; Leadership in Higher Education]			●
Counseling [MCoUn options: Clinical Mental Health Counseling (OSU-Cascades only); School Counseling (OSU-Cascades only)]		●	
Education [BA, BS options: Advanced Mathematics Teaching; Biology Teaching; Chemistry Teaching; Elementary Teaching; Family and Consumer Sciences Teaching; Foundational Mathematics; Health Teaching; Integrated Science Teaching; Language Arts Teaching; Social Studies Teaching] [MS options: Mathematics Education; Science Education] [EdM options: Advanced Science and Mathematics Education; Free-Choice Learning; PK-12 English to Speakers of Other Languages (ESOL); Social Justice] [PhD options: Agricultural Education; Language Equity and Education Policy; Science/Mathematics Education]	GE	●	●

	B	M	D
Elementary Education (OSU-Cascades Only)	GE		
Teaching (MAT) [MAT options: Elementary (OSU-Cascades only); Language Arts (OSU-Cascades only); Mathematics (OSU-Cascades only); Music; Science (OSU-Cascades only); Social Studies (OSU-Cascades only)]		●	
College of Engineering			
▶ Architectural Engineering	EN		
▶ Bioengineering	EN	GP	●
Biological and Ecological Engineering		●	●
▶ Chemical Engineering	EN	GP	●
▶ Civil Engineering	EN	GP	●
▶ Computer Science BA, BS options: Applied Computer Science; Computer Systems]	CS	GP	●
▶ Construction and Engineering Management	EN		
▶ Ecological Engineering	EN		
▶ Electrical and Computer Engineering	EN	GP	●
▶ Energy Systems Engineering (OSU-Cascades Only)	EN		
▶ Environmental Engineering	EN	GP	●
▶ Industrial Engineering [BS option: Business Engineering] [Graduate options: Advanced Manufacturing, Engineering Management, Human Systems Engineering, Informational Systems Engineering, Manufacturing Systems Engineering]	EN	GP	●
▶ Manufacturing Engineering [BS options: Manufacturing Systems; Product Development]	EN		
Materials Science		●	●
▶ Mechanical Engineering [Grad options: Advanced Manufacturing; Design; Engineering Management; Materials Mechanics; Renewable Energy; Robotics and Thermal Fluid Sciences]	EN	GP	●
▶ Medical Physics		●	●
▶ Nuclear Engineering	EN	●	●
Radiation Health Physics [BS option: Radiation Health Physics Pre-Med]	SC	●	●
▶ Robotics		●	●

	B	M	D
College of Forestry			
Forest Ecosystem and Society		●	●
▶ Forest Engineering	FO		
▶ Forest Engineering/Civil Engineering	EN		
▶ Forestry [BS options: Forest Management, Forest Operations Management, Forest Restoration and Fire]	FO		
Natural Resources [BS options: Ecological Restoration; Fish and Wildlife Conservation; Forest Ecosystems; Human Dimensions in Natural Resources; Individualized Specialty Option; Intergrated Conservation Analyst; Landscape Analysis; Conservation Law Enforcement; Natural Resource Education; Natural Resource Policy and Management; Urban Forest Landscapes; Wildland Fire Ecology]	NR	●	
Renewable Materials [BS options: Advanced Wood Manufacturing; Art and Design; Management and Marketing; Science and Engineering]	NR		
▶ Tourism, Recreation, and Adventure Leadership [BS options: Adventure Leadership Education; Nature, Eco and Adventure Tourism; Outdoor Recreation Management; Sustainable Tourism Management]	FO		
Sustainable Forest Management		●	●
Wood Science		●	●

	B	M	D
College of Liberal Arts			
American Studies (OSU-Cascades Only)	GE		
Anthropology [BA/BS options: Archaeology, Biocultural, Cultural/Linguistics, General Anthropology]	GE		
Applied Anthropology		●	●
Applied Ethics (MA)		●	
Art [BA, BS, BFA options: Art History (BA, BS only); Photography and Digital Studio (BA, BS, BFA); Studio Art (BA, BS, BFA)]	GE		
Arts, Media and Technology (OSU-Cascades Only)	GE		
College Student Services Administration		●	
Creative Writing		●	
▶ Digital Communication Arts	GE		
Economics [BA/BS options: Law, Economics and Policy; General Economics; Managerial Economics; Mathematical Economics]	GE		
English	GE	●	
Environmental Arts and Humanities		●	
Ethnic Studies	GE		
French	GE		
German	GE		
Graphic Design	GE		
History	GE		
History of Science		●	●
Liberal Studies [BA/BS option: Pre-Education]	GE		
Music [BA/BS options: Instrumental Performance, Music Education, Music Production, Piano Performance, Vocal Performance]	GE		

	B	M	D
Philosophy	GE		
Political Science [BA/BS options: Environmental and Energy Politics; International Affairs; Law and Politics]	GE		
Psychology (MS and PhD only available at Corvallis)	PS	●	●
Public Policy	PP	●	●
Religious Studies	GE		
Social Science [BA/BS option: Community Development and Leadership] (OSU-Cascades Only)	GE		
Sociology [BA/BS options: Crime and Justice; Environmental and Natural Resource Sociology]	PP		
Spanish	GE		
Speech Communication [BA/BS options: Communication, Theater Arts]	GE		
Women, Gender, and Sexuality Studies (BA, BS, MA, PhD)	WG	●	●

	B	M	D
College of Pharmacy			
Pharmaceutical Sciences		●	●
Pharmacy, Doctor of Pharmacy (4-year professional program)			●

	B	M	D
College of Public Health and Human Sciences			
Adapted Physical Education		●	
Athletic Training		●	
Human Development and Family Sciences/Studies [BS options: Child Development; Early Childhood; General Human Development and Family Sciences; Human Services]	ES	●	●
Kinesiology [BS options: Pre-Therapy and Allied Health] [MS, PhD option: Adapted Physical Activity]	ES	●	●
Nutrition [BS options: Dietetics; Nutrition and Foodservice Systems; Nutrition and Health Sciences; Pre-Dietetics]	ES	●	●
Public Health [BS options: Health Management and Policy; Health Promotion and Health Behavior] [MPH, PhD options: Biostatistics; Environmental and Occupational Health; Epidemiology; Global Health; Health Promotion and Health Behavior; Health Systems and Policy; Physical Activity; Public Health Practice]	ES	GP	●

	B	M	D
College of Science			
▶ Biochemistry and Biophysics [BS options: Advanced Biophysics; Neuroscience; Pre-Medicine/Biochemistry and Biophysics]	SC	●	●
Biochemistry and Molecular Biology [BS options: Advanced Molecular Biology, Computational Molecular Biology, Pre-Medicine/Biochemistry and Molecular Biology]	SC		
BioHealth Sciences [BS options: Pre-Clinical Laboratory Science, Pre-Dentistry, Pre-Medicine/Pre-Podiatry, Pre-Optometry, Pre-Pharmacy, Pre-Physical Therapy, Pre-Physician Assistant]	SC		
▶ Biology [BS options: Ecology, Genetics, Marine Biology, Physiology and Behavior, Pre-Dentistry Biology, Pre-Education Biology, Pre-Medicine Biology, Pre-Veterinary Medicine]	SC		
▶ Chemistry [BA/BS options: Advanced Biochemistry, Advanced Chemistry, Biochemistry, Business, Chemical Engineering, Chemistry Education, Environmental Chemistry, Forensic Science, Materials Science, Pre-Medicine] [MS concentration options: Analytical Chemistry, Inorganic Chemistry, Materials Chemistry , Nuclear Chemistry, Organic Chemistry, Physical Chemistry]	SC	GP	●
Data Analytics [MS option: Statistics]		●	
Integrative Biology		●	●
▶ Mathematics [BS options: Applied and Computational Mathematics, Mathematical Biology, Secondary Teaching Emphasis, Statistics]	MA	GP	●
▶ Microbiology [BS options: Aquatic Microbiology, Pre-Medicine/Microbiology]	SC	●	●
▶ Physics/Applied Physics [BA/BS options: Applied Physics, Biological Physics, Chemical Physics, Computational Physics, Geophysics, Mathematical Physics, Optical Physics, Physics Teaching/Physics]	SC	●	●
▶ Statistics		●	●
▶ Zoology	SC		

	B	M	D
College of Veterinary Medicine			
Veterinary Medicine - DVM			●

	B	M	D
Graduate School Interdisciplinary Programs			
Comparative Health Sciences [MS, PhD options: Biomedical Sciences, Clinical Sciences]		GP	GP
Environmental Sciences [MA, MS, PSM, PhD: Biogeochemistry, Ecology, Environmental Education, Natural Resources, Quantitative Analysis, Social Science, Water Resources]		GP	●
Interdisciplinary Studies		●	●
Molecular and Cellular Biology		●	●
▶ Water Resources Engineering		●	●
Water Resources Policy and Management		●	
▶ Water Resources Science		●	●

To learn more, look at our course catalog www.intostudy.com/osu/programs

UNDERGRADUATE ADMISSIONS >>

Your customized first-year experience as an international student

At OSU, we've been leading the way for international student support and success in the US. Through the years, we've helped international students grow to become leaders in their social and academic communities on campus as they gather the experiences that build their futures. We are right by your side to help you with the small decisions such as which room type would suit you best to the bigger decisions such as which degree

specializations lead to which internships and jobs. Every undergraduate international student at OSU begins their journey with the standard OSU first-year experience with access to additional support and services for international students from INTO OSU and the Office of International Services (OIS). As an OSU undergraduate, we are here to ensure you start out on a good note.

A New and Improved Undergraduate Experience

We are happy to announce that from September 2020, OSU will launch a simplified and enhanced first-year experience for all international students. With three simple options to enter OSU undergraduate programs as an international student, you will start at OSU with the level of support that you need.

Our three entry routes—International Direct (ID), International Year One (IYO) and Academic English—accommodate students with varying levels of English and academic qualifications. International Direct is designed for international students that are independent and fully qualified but may benefit from some support and assistance in adjusting to university life in the US. International Year One (Pathway) provides more structure and support in the first three or four terms for students whose academic and language qualifications are below International Direct requirements. Finally, for students that are not quite ready to start academic courses, our Academic English program will help you build the language skills to reach the level required to start an ID or IYO program.



98.3%
OVERALL
SATISFACTION
For International Year
One in 2019

INTO Annual Student
Experience Survey 2019

The Power of International Direct

Before you leave home to study at a university in the US, you might not know what it's going to be like. With International Direct at OSU, you don't have to worry about anything. You will receive the information you need predeparture. You will be met on arrival at the airport and taken to your ready-made room on campus. You will receive the orientation information and experiences that you need in a way that makes sense. You will have the full first-year experience of your academic major in the department and college where you are studying. At the same time, you will have peace of mind knowing that you have OSU's international student expertise at your fingertips. **From selecting and registering for the right academic courses to accessing jobs, internships and other opportunities through on-campus support resources—we will be there for you every step of the way.**



COMPREHENSIVE INTERNATIONAL SUPPORT

From your first days we provide pre-arrival advice, arrival support and acclimation orientations after arrival. Once you're on campus, the support doesn't end. You will have access to cultural assistance and community building experiences to help you integrate on campus and build connections with friends and faculty.



INDIVIDUALIZED ADVISING AND GUIDED REGISTRATION

Our dedicated advisors will ensure that you register for the classes you need to feed your intellectual appetite and make sure you graduate on schedule. We will guide you through the registration process, so you don't have to figure it out all on your own until you are ready to be fully independent.



A PERSONALIZED STUDY PLAN

Your study plan will be established by your English level as well as your chosen major. Your priority registration process will include the core courses included in the First-Year Experience for your academic major as well as any language and Study Skills courses that you may need to ensure you are successful.



TERM-LONG ORIENTATION

Starting in 2020, additional orientation will take place in small groups over an entire term as opposed to just one week when you are tired and jet-lagged. This means you will have more time to ask questions, attend seminars to learn university basics and adjust to American life in general. This gives you the best start for your studies and your life here in the US.



ACADEMIC SUPPORT RESOURCES

You have the same full access to all the academic support and tutoring resources provided to OSU undergraduate students. In addition, you have access to the INTO OSU Learning Center where you can take advantage of resources and tutoring specifically created for international students.

UNDERGRADUATE ADMISSIONS

INTERNATIONAL DIRECT (ID) INTERNATIONAL YEAR ONE (IYO)

Entry Requirements	ID	IYO	
		3-TERM	4-TERM
Requirements*	High school diploma	High school diploma	
Minimum GPA Equivalent	3.0	2.5	2.5
TOEFL iBT	70	60	50
IELTS	6.0	5.5	5.0
IELA	169	162	154
Duolingo	N/A	90	75
Academic English	Level 5	Level 4	Level 3

Entry requirements are subject to change and may vary by program. *No SAT required for admissions.

Institutional Code TOEFL: 4586

Dates	
ENTRY ROUTE	ID AND IYO
Start Dates	Fall 2020: Sep 16, 2020 Winter 2020: Dec 28, 2020 Spring 2021: Mar 23, 2021 Summer 2021: Jun 15, 2021

International Year One Programs *Estimated credits remaining after Pathway/Total credit hours needed to complete degree.

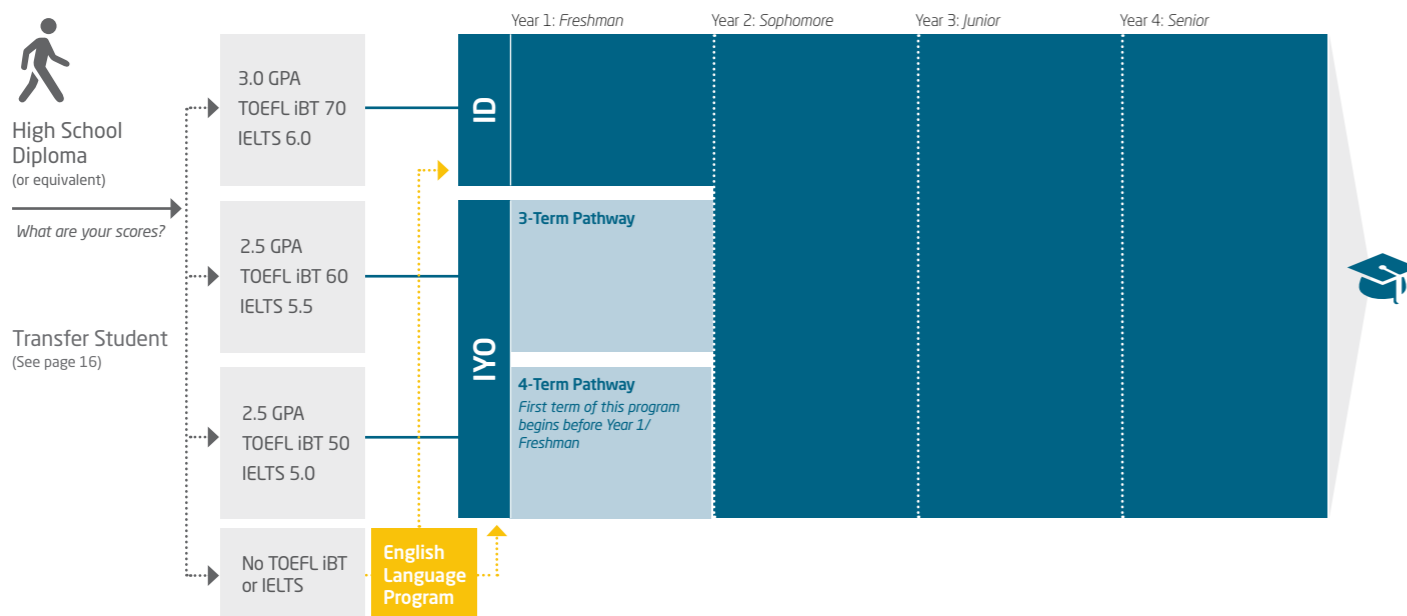
Term	Start Dates				Credits*	Entry Requirements: High School Diploma					Progression Requirements	
	Fall	Winter	Spring	Summer		GPA	TOEFL iBT	IELTS	IELA	Duolingo	GPA	Other
Business												
4-Term	•	•	•	•	125/180	2.5	50	5.0	154	75	2.25	<ul style="list-style-type: none"> Grade of C- or better in Math (MTH 111 or higher), English Composition (WR 121) and Communication (COMM 111) No Satisfactory/Unsatisfactory (S/U) graded courses in OSU academic coursework Minimum number of required credits completed: 36
3-Term	•	•	•	•	132/180		60	5.5	162	90		
Computer Science												
4-Term	•	•	•	•	127/180	2.5	50	5.0	154	75	2.25	<ul style="list-style-type: none"> Grade of C- or better in Math (MTH 111 or higher), English Composition (WR 121) and Communication (COMM 111) No Satisfactory/Unsatisfactory (S/U) graded courses in OSU academic coursework Minimum number of required credits completed: 36
3-Term	•	•	•	•	135/180		60	5.5	162	90		
Design, Apparel and Merchandising Management												
4-Term	•	•	•	•	128/180	2.5	50	5.0	154	75	2.25	<ul style="list-style-type: none"> Grade of C- or better in Math (MTH 111 or higher), English Composition (WR 121) and Communication (COMM 111) No Satisfactory/Unsatisfactory (S/U) graded courses in OSU academic coursework Minimum number of required credits completed: 36
3-Term	•	•	•	•	134/180		60	5.5	162	90		
Engineering												
4-Term	•	•	•	•	123/180	2.5	50	5.0	154	75	2.25	<ul style="list-style-type: none"> Grade of C- or better in Math (MTH 111 or higher), English Composition (WR 121) and Communication (COMM 111) No Satisfactory/Unsatisfactory (S/U) graded courses in OSU academic coursework Minimum number of required credits completed: 36
3-Term	•	•	•	•	133/180		60	5.5	162	90		
Environmental Economics and Policy												
4-Term	•	•	•	•	125/180	2.5	50	5.0	154	75	2.25	<ul style="list-style-type: none"> Grade of C- or better in Math (MTH 111 or higher), English Composition (WR 121) and Communication (COMM 111) No Satisfactory/Unsatisfactory (S/U) graded courses in OSU academic coursework Minimum number of required credits completed: 36
3-Term	•	•	•	•	134/180		60	5.5	162	90		
Exercise and Sport Science												
4-Term	•	•	•	•	124/180	2.5	50	5.0	154	75	2.25	<ul style="list-style-type: none"> Grade of C- or better in Math (MTH 111 or higher), English Composition (WR 121) and Communication (COMM 111) No Satisfactory/Unsatisfactory (S/U) graded courses in OSU academic coursework Minimum number of required credits completed: 36
3-Term	•	•	•	•	132/180		60	5.5	162	90		
Food Science & Technology												
4-Term	•	•	•	•	125/180	2.5	50	5.0	154	75	2.25	<ul style="list-style-type: none"> Grade of C- or better in Math (MTH 111 or higher), English Composition (WR 121) and Communication (COMM 111) No Satisfactory/Unsatisfactory (S/U) graded courses in OSU academic coursework Minimum number of required credits completed: 36
3-Term	•	•	•	•	135/180		60	5.5	162	90		
Forestry												
4-Term	•	•	•	•	127/180	2.5	50	5.0	154	75	2.25	<ul style="list-style-type: none"> Grade of C- or better in Math (MTH 111 or higher), English Composition (WR 121) and Communication (COMM 111) No Satisfactory/Unsatisfactory (S/U) graded courses in OSU academic coursework Minimum number of required credits completed: 36
3-Term	•	•	•	•	135/180		60	5.5	162	90		
General												
4-Term	•	•	•	•	132/180	2.5	50	5.0	154	75	2.25	<ul style="list-style-type: none"> Grade of C- or better in Math (MTH 111 or higher), English Composition (WR 121) and Communication (COMM 111) No Satisfactory/Unsatisfactory (S/U) graded courses in OSU academic coursework Minimum number of required credits completed: 36
3-Term	•	•	•	•	138/180		60	5.5	162	90		
Mathematics												
4-Term	•	•	•	•	127/180	2.5	50	5.0	154	75	2.25	<ul style="list-style-type: none"> Grade of C- or better in Math (MTH 111 or higher), English Composition (WR 121) and Communication (COMM 111) No Satisfactory/Unsatisfactory (S/U) graded courses in OSU academic coursework Minimum number of required credits completed: 36
3-Term	•	•	•	•	135/180		60	5.5	162	90		
Natural Resources and Renewable Materials												
4-Term	•	•	•	•	127/180	2.5	50	5.0	154	75	2.25	<ul style="list-style-type: none"> Grade of C- or better in Math (MTH 111 or higher), English Composition (WR 121) and Communication (COMM 111) No Satisfactory/Unsatisfactory (S/U) graded courses in OSU academic coursework Minimum number of required credits completed: 36
3-Term	•	•	•	•	138/180		60	5.5	162	90		
Psychology												
4-Term	•	•	•	•	129/180	2.5	50	5.0	154	75	2.25	<ul style="list-style-type: none"> Grade of C- or better in Math (MTH 111 or higher), English Composition (WR 121) and Communication (COMM 111) No Satisfactory/Unsatisfactory (S/U) graded courses in OSU academic coursework Minimum number of required credits completed: 36
3-Term	•	•	•	•	135/180		60	5.5	162	90		
Public Policy												
4-Term	•	•	•	•	128/180	2.5	50	5.0	154	75	2.25	<ul style="list-style-type: none"> Grade of C- or better in Math (MTH 111 or higher), English Composition (WR 121) and Communication (COMM 111) No Satisfactory/Unsatisfactory (S/U) graded courses in OSU academic coursework Minimum number of required credits completed: 36
3-Term	•	•	•	•	137/180		60	5.5	162	90		
Science												
4-Term	•	•	•	•	125/180	2.5	50	5.0	154	75	2.25	<ul style="list-style-type: none"> Grade of C- or better in Math (MTH 111 or higher), English Composition (WR 121) and Communication (COMM 111) No Satisfactory/Unsatisfactory (S/U) graded courses in OSU academic coursework Minimum number of required credits completed: 36
3-Term	•	•	•	•	133/180		60	5.5	162	90		
Women and Gender Studies												
4-Term	•	•	•	•	131/180	2.5	50	5.0	154	75	2.25	<ul style="list-style-type: none"> Grade of C- or better in Math (MTH 111 or higher), English Composition (WR 121) and Communication (COMM 111) No Satisfactory/Unsatisfactory (S/U) graded courses in OSU academic coursework Minimum number of required credits completed: 36
3-Term	•	•	•	•	139/180		60	5.5	162	90		

Entry and progression requirements are subject to change and may vary by program.

FOR MORE INFORMATION ABOUT OSU UNDERGRADUATE PROGRAMS, SCAN TO VISIT OUR WEBSITE.




Undergraduate Degree Program



[SAMPLE IYO PROGRAM] Computer Science			Program Information																			
3-Term Pathway Fall: September 16, 2020 Winter: December 28, 2020 Spring: March 23, 2021 Summer: June 15, 2021	Degree Program Components 180 credit hour program 45 credit hours from Pathway apply to degree 135 credit hours remaining toward degree																					
Entry Requirements • High school diploma with 2.5 GPA	Language Requirements • TOEFL iBT 60 or • IELTS 5.5 or • IELA 162 or • Duolingo 90																					
<table border="1"> <thead> <tr> <th>Term 1</th> <th>Course Title</th> <th>Credit Hours</th> </tr> </thead> <tbody> <tr> <td>ALS 150</td> <td>Academic Reading/Writing</td> <td>3</td> </tr> <tr> <td>ALS 151</td> <td>Academic Listening/Speaking</td> <td>3</td> </tr> <tr> <td>MTH</td> <td>Math Course - Variable Level*</td> <td>4</td> </tr> <tr> <td>CS 160</td> <td>Computer Science Orientation</td> <td>3</td> </tr> <tr> <td>ALS 181</td> <td>Computer Science Orientation Bridge</td> <td>2</td> </tr> <tr> <td colspan="2">Total</td> <td>15</td> </tr> </tbody> </table>	Term 1	Course Title	Credit Hours	ALS 150	Academic Reading/Writing	3	ALS 151	Academic Listening/Speaking	3	MTH	Math Course - Variable Level*	4	CS 160	Computer Science Orientation	3	ALS 181	Computer Science Orientation Bridge	2	Total		15	Progression Requirements • 2.25 GPA cumulative in the Pathway program • No Satisfactory/Unsatisfactory (S/U) graded courses in OSU academic coursework • Grade of C- or better in English Composition (WR 121), Math (MTH 111 or higher) and Communication (COMM 111) • Minimum of 36 credits earned during Pathway program
Term 1	Course Title	Credit Hours																				
ALS 150	Academic Reading/Writing	3																				
ALS 151	Academic Listening/Speaking	3																				
MTH	Math Course - Variable Level*	4																				
CS 160	Computer Science Orientation	3																				
ALS 181	Computer Science Orientation Bridge	2																				
Total		15																				
<table border="1"> <thead> <tr> <th>Term 2</th> <th>Course Title</th> <th>Credit Hours</th> </tr> </thead> <tbody> <tr> <td>ALS 162</td> <td>Academic Reading/Writing</td> <td>3</td> </tr> <tr> <td>COMM 111</td> <td>Public Speaking</td> <td>3</td> </tr> <tr> <td>MTH</td> <td>Math Course - Variable Level*</td> <td>4</td> </tr> <tr> <td>CS 161</td> <td>Introduction to Computer Science I</td> <td>4</td> </tr> <tr> <td>PAC</td> <td>Physical Activity Class</td> <td>1</td> </tr> <tr> <td colspan="2">Total</td> <td>15</td> </tr> </tbody> </table>	Term 2	Course Title	Credit Hours	ALS 162	Academic Reading/Writing	3	COMM 111	Public Speaking	3	MTH	Math Course - Variable Level*	4	CS 161	Introduction to Computer Science I	4	PAC	Physical Activity Class	1	Total		15	Notes * Specific course is determined by results of Math placement test and requirements for the major field of study. * The Pathway leads to the second year of the Computer Science major. Starting in your second year, you must maintain at least a 2.5 GPA to be in good academic standing.
Term 2	Course Title	Credit Hours																				
ALS 162	Academic Reading/Writing	3																				
COMM 111	Public Speaking	3																				
MTH	Math Course - Variable Level*	4																				
CS 161	Introduction to Computer Science I	4																				
PAC	Physical Activity Class	1																				
Total		15																				
<table border="1"> <thead> <tr> <th>Term 3</th> <th>Course Title</th> <th>Credit Hours</th> </tr> </thead> <tbody> <tr> <td>WR 121</td> <td>English Composition</td> <td>3</td> </tr> <tr> <td>MTH</td> <td>Math Course - Variable Level*</td> <td>4</td> </tr> <tr> <td>CS 162</td> <td>Introduction to Computer Science II</td> <td>4</td> </tr> <tr> <td>HHS 231</td> <td>Lifetime Fitness for Health</td> <td>2</td> </tr> <tr> <td>ALS 181</td> <td>Lifetime Fitness for Health Bridge</td> <td>2</td> </tr> <tr> <td colspan="2">Total</td> <td>15</td> </tr> </tbody> </table>	Term 3	Course Title	Credit Hours	WR 121	English Composition	3	MTH	Math Course - Variable Level*	4	CS 162	Introduction to Computer Science II	4	HHS 231	Lifetime Fitness for Health	2	ALS 181	Lifetime Fitness for Health Bridge	2	Total		15	Term 4 (Recommended) During the fourth term students will complete the additional classes to ensure that they are well prepared for their second year at OSU. It is recommended that all students, especially those in sciences and engineering, plan to study for four consecutive terms. These courses are generally delivered through the INTO OSU Center and are for Pathway students only.
Term 3	Course Title	Credit Hours																				
WR 121	English Composition	3																				
MTH	Math Course - Variable Level*	4																				
CS 162	Introduction to Computer Science II	4																				
HHS 231	Lifetime Fitness for Health	2																				
ALS 181	Lifetime Fitness for Health Bridge	2																				
Total		15																				
<table border="1"> <thead> <tr> <th>Term 4 (Recommended)</th> <th>Course Title</th> <th>Credit Hours</th> </tr> </thead> <tbody> <tr> <td></td> <td></td> <td></td> </tr> </tbody> </table>	Term 4 (Recommended)	Course Title	Credit Hours																			
Term 4 (Recommended)	Course Title	Credit Hours																				

eccs.oregonstate.edu



UNDERGRADUATE TRANSFER >>

Have you earned credits from another college or university and want to transfer to a US university? You can transfer directly into Oregon State University or choose our Undergraduate Transfer Program (UTP) which is specifically designed to support international students through the process of transferring.

Entry Requirements		
Program	DIRECT TRANSFER	UNDERGRADUATE TRANSFER PROGRAM
Program Length	N/A	1-Term, 2-Term, 3-Term or 4-Term
Start Dates	Fall 2020: Sep 2020 Winter 2020: Dec 2020 Spring 2021: Mar 2021 Summer 2021: Jun 2021	Fall 2020: Sep 16, 2020 Winter 2020: Dec 28, 2020 Spring 2021: Mar 23, 2021 Summer 2021: Jun 15, 2021
GPA	2.25-2.49 college/university GPA (College Math course completed with C-) 2.50+ college/university GPA (College Math course not required) If transferring from a US-accredited college/university, Writing 121 OSU course equivalent completed with C- or better. If transferring from a non-US-accredited college or university then no Writing 121 OSU course equivalent is required	2.25
TOEFL iBT	80 (minimum 16 subscores)	50-75
IELTS	6.5	5.0-6.0
IELA	176	154-169
Other	<ul style="list-style-type: none"> Two English composition courses from a recognized college or university in the US with grades C- or better One English composition and one speech communication course with grades C- or better Level 6 Academic English completion with C/Pass or higher in all classes 	N/A
Duolingo	N/A	75-110
Minimum Transfer Credits	24 per quarter (16 per semester) credits	15 per quarter (12 per semester) credits from a recognized college or university
Maximum Transfer Credits	No limit	No limit

Entry requirements are subject to change and may vary by program.

Why Choose UTP?

Choosing UTP provides a customized path to your bachelor's degree. Before your program starts, Oregon State University will provide you with an estimate of credits that will transfer to the university. Once you arrive on campus, our friendly staff will be available to help you transition into life at a US university. You will also have access to helpful resources including academic, English language and cultural support. If you do not meet the English language entry requirements for the UTP, you can enter our Academic English program before progressing to either the UTP or direct transfer to Oregon State University.

UTP Benefits:

- Transfer of credits from your college or university-level classes
- Receive customized curriculum of university credit-bearing courses
- Quick turnaround time for offer (5-7 business days)
- Unofficial Pre-arrival Credit Evaluation (15 additional business days after receiving offer letter)
- Guaranteed progression to any undergraduate program upon successful completion of your UTP
- Academic advising throughout the program including progression and student success advisors

	Start Dates			
	Fall 2020: Sep 16, 2020	Winter 2020: Dec 28, 2020	Spring 2021: Mar 23, 2021	Summer 2021: Jun 15, 2021
Business	●●	●●	●●	●●
Computer Science	●●	●●	●●	●●
Design, Apparel and Merchandising Management	●●	●●	●●	●●
Engineering	●●	●●	●●	●●
Environmental Economics and Policy	●●	●●	●●	●●
Exercise and Sport Science	●●	●●	●●	●●
Food Science and Technology	●●	●●	●●	●●
Forestry	●●	●●	●●	●●
General	●●●●	●●●●	●●●●	●●●●
Mathematics	●●	●●	●●	●●
Natural Resources and Renewable Materials	●●	●●	●●	●●
Psychology	●●	●●	●●	●●
Public Policy	●●	●●	●●	●●
Science	●●	●●	●●	●●
Women and Gender Studies	●●	●●	●●	●●

● 1-Term ● 2-Term ● 3-Term ● 4-Term

GRADUATE ADMISSIONS >>

OSU offers more than 80 graduate programs, many of which are ranked among the top in the nation. There are several different paths to begin earning your degree.

How you start your program depends on your academic profile and your English level. How you finish your program is exactly how you pictured: graduating with a master's or PhD from OSU.

→ **Direct Entry:** If you meet the academic and English language requirements for your degree program, you can apply directly to OSU.

To apply, you may need the following required documents: declarations, university transcripts, proof of degree, accounting of time, passport and English test score. An application fee may also apply.

The graduate admissions process is competitive, and an extensive review of your application will be done. Please expect a longer turnaround for an admissions decision. For more information, visit gradschool.oregonstate.edu/admissions/after-you-apply

→ **Graduate Pathway:** Our Graduate Pathways allow you to begin earning credits toward your degree even if you do not meet the academic and English requirements for direct entry. The program will help build the academic foundation and essential English language skills you need to succeed in your master's degree. View program specific entry requirements at www.intostudy.com/osu/programs

→ **Academic English Language Program:** If you do not meet the direct or Graduate Pathway program entry language requirements, you can enter our Academic English program to improve your academic and language skills. Once you have achieved the required language level, you can progress to a Graduate Pathway program or enter your degree program directly. Learn more on page 20.

Program	Entry Requirements*		GRADUATE PATHWAY		
	DIRECT ENTRY**	MID*	1-TERM	2-TERM	3-TERM
Program requirements	<ul style="list-style-type: none"> See gradschool.oregonstate.edu/programs for specific program entry requirements Additional requirements may include standardized tests like the GMAT or GRE The degree program you select may have additional requirements 	<ul style="list-style-type: none"> Undergraduate degree in relevant discipline For additional requirements, please see chart below 	Undergraduate degree in relevant discipline		
Minimum GPA Equivalent	3.0	3.0	3.0	2.5	2.5
TOEFL iBT	91 (18 minimum subscores)	80 (18 subscores)	85 (16 subscores)	80 (16 subscores)	70
IELTS	7.0	6.5 (5.5 subscores)	6.5 (6.0 subscores)	6.5 (5.5 subscores)	6.0
IELA	185	176 (162 subscores)	176 (169 subscores)	176 (162 subscores)	169
Duolingo	N/A	110	120	110	95
Academic English	N/A	N/A	N/A	Level 6	Level 5

Notes: *All entry requirements are subject to change and may vary by program. In addition to meeting minimum admission requirements, you may also need to meet specific program requirements.

**These English requirements are for direct entry to graduate degree programs that have a Graduate Pathway option. English requirements for direct entry to all other graduate programs can be found on the Graduate School website: <https://gradschool.oregonstate.edu/admissions/international#english-language>

Institutional Code TOEFL: 4586 GRE: 4586 GMAT: PW4-DR-05

Dates			
Program	DIRECT		GRADUATE PATHWAY
	DIRECT ENTRY	MID	
Start Dates	Fall 2020: Sep 2020 Winter 2020: Dec 2020 Spring 2021: Mar 2021 Summer 2021: Jun 2021	Fall 2020: Sep 14, 2020 Winter 2020: Dec 30, 2020 Spring 2021: Mar 25, 2021	Fall 2020: Sep 16, 2020 Winter 2020: Dec 28, 2020 Spring 2021: Mar 23, 2021 Summer 2021: Jun 15, 2021

MASTER'S INTERNATIONAL DIRECT (MID) >>

Master's International Direct provides comprehensive support and services for students in the first term of the **MEng Electrical and Computer Engineering** and the **MEng Computer Science** programs.

MID students are full degree-seeking students who are issued a Direct Entry I-20 and receive additional support and services alongside graduate academic classes to ensure first-term success as an international student. Services include:

- Program-specific tutoring
- Airport pickup upon arrival
- Comprehensive orientation
- Academic advising

Terms	Start Dates			Credits*	Entry Requirements			TOEFL	IELTS	IELA
	Fall	Winter	Spring		GPA	Additional Requirements				
Computer Science										
1-Term (MID)	•	•	•	35-36/45	3.0	<ul style="list-style-type: none"> Undergraduate degree in relevant discipline 2.0 GPA in 1 year of college level Math Complete 3 out of 6 courses at the upper division level with a grade equivalent to a 3.0 in each individual course: Algorithm Design and Analysis; Computer Architecture; Operating; Automata Theory/Theory of Computation; Programming Language Fundamentals; Compilers 	80 (18 subscores)	6.5 (5.5 subscores)	176 (162 subscores)	
Electrical and Computer Engineering										
1-Term (MID)	•	•	•	35-36/45	3.0	<ul style="list-style-type: none"> Undergraduate degree in relevant discipline 2.0 GPA in 1 year of Calculus 2.0 GPA in 1 year of Physics Complete 3 out of 6 courses with a grade equivalent to a 3.0 in each individual course: AC/DC Circuits/Circuits Analysis; Signals and Systems; Electricity and Magnetism; Power (taken in 3rd or 4th year of UG study); Computer Engineering (taken in 3rd or 4th year of UG study); Materials and Devices (taken in 3rd or 4th year of UG study) 	80 (18 subscores)	6.5 (5.5 subscores)	176 (162 subscores)	

Entry requirements are subject to change and may vary by program. *Estimated credits remaining after MID term/Total credit hours needed to complete degree.

Graduate Pathway Programs

*Estimated credits remaining after Pathway/Total credit hours needed to complete degree.

**For English Language tests subscores, please see entry requirements table on page 17.

Term	Start Dates				Credits*	Entry Requirements**	Progression Requirements				
	Fall	Winter	Spring	Summer			GPA	Undergraduate degree ¹	TOEFL iBT	IELTS	IELA
Applied Economics											
3-Term	•				30/45	2.5 Undergraduate degree in a relevant discipline	70	6.0	169	95	3.0 • B or higher grades in all graduate level classes • B or higher grade in all English language classes OR TOEFL 91 (18 subscores) OR IELTS 7.0
2-Term		•			30/45		80	6.5	176	110	
Bioengineering											
3-Term	•				30/45	2.5 Undergraduate degree in a relevant discipline	70	6.0	169	95	3.0 • B or higher grades in all graduate level classes • B or higher grade in all English language classes OR TOEFL 91 (18 subscores) OR IELTS 7.0
2-Term		•			30/45		80	6.5	176	110	
1-Term	•				35-36/45	3.0	85	6.5	176	120	
Biostatistics											
3-Term	•				44/59	2.5 Undergraduate degree in a relevant discipline	70	6.0	169	95	3.0 • B or higher grades in all graduate level classes • B or higher grade in all English language classes OR TOEFL 91 (18 subscores) OR IELTS 7.0
2-Term		•			44/59		80	6.5	176	110	
Business Administration											
3-Term	•				50-51/60	2.5 Undergraduate degree in a relevant discipline	70	6.0	169	95	3.0 • B or higher grades in all graduate level classes • B or higher grade in all English language classes OR TOEFL 91 (18 subscores) OR IELTS 7.0 • GMAT 500 with minimum 20th percentile in verbal, quantitative and integrated reasoning, and a minimum analytical writing score of 4 OR GRE total score of 304 with verbal and quantitative scores in at least the 30th percentile and an analytical writing score of 3.5
2-Term		•			45/60		80	6.5	176	110	
1-Term	•	•	•		45/60	3.0	85	6.5	176	120	
Chemical Engineering											
3-Term	•				30/45	2.5 Undergraduate degree in a relevant discipline	70	6.0	169	95	3.0 • B or higher grades in all graduate level classes • B or higher grade in all English language classes OR TOEFL 91 (18 subscores) OR IELTS 7.0
2-Term		•			30/45		80	6.5	176	110	
1-Term	•				35-36/45	3.0	85	6.5	176	120	
Civil Engineering											
2-Term	•				30/45	2.5 Undergraduate degree in a relevant discipline	80	6.5	176	110	3.0 • B or higher grades in all graduate level classes • B or higher grade in all English language classes OR TOEFL 91 (18 subscores) OR IELTS 7.0
1-Term	•				35-36/45		3.0	85	6.5	176	
Comparative Health Sciences											
3-Term	•				30/45	2.5 Undergraduate degree in a relevant discipline	70	6.0	169	95	3.0 • B or higher grades in all graduate level classes • B or higher grade in all English language classes OR TOEFL 91 (18 subscores) OR IELTS 7.0
2-Term	•	•			30/45		80	6.5	176	110	
1-Term	•	•	•		35-36/45	3.0	85	6.5	176	120	
Computer Science											
3-Term	•				30/45	2.5 Undergraduate degree in a relevant discipline	70	6.0	169	95	3.0 • B or higher grades in all graduate level classes • B or higher grade in all English language classes OR TOEFL 91 (18 subscores) OR IELTS 7.0
2-Term	•	•			30/45		80	6.5	176	110	
Electrical and Computer Engineering											
3-Term	•				30/45	2.5 Undergraduate degree in a relevant discipline	70	6.0	169	95	3.0 • B or higher grades in all graduate level classes • B or higher grade in all English language classes OR TOEFL 91 (18 subscores) OR IELTS 7.0
2-Term	•	•			30/45		80	6.5	176	110	
Environmental Engineering											
3-Term	•				30/45	2.5 Undergraduate degree in a relevant discipline	70	6.0	169	95	3.0 • B or higher grades in all graduate level classes • B or higher grade in all English language classes OR TOEFL 91 (18 subscores) OR IELTS 7.0
2-Term		•			30/45		80	6.5	176	110	
1-Term	•				35-36/45	3.0	85	6.5	176	120	
Environmental Sciences											
3-Term	•			•	30/45	2.5 Undergraduate degree in a relevant discipline	70	6.0	169	95	3.0 • B or higher grades in all graduate level classes • B or higher grade in all English language classes OR TOEFL 91 (18 subscores) OR IELTS 7.0
2-Term	•	•			30/45		80	6.5	176	110	
1-Term	•	•	•		35-36/45	3.0	85	6.5	176	120	
Global Health											
3-Term	•				50-51/60	2.5 Undergraduate degree in a relevant discipline	70	6.0	169	95	3.0 • B or higher grades in all graduate level classes • B or higher grade in all English language classes OR TOEFL 91 (18 subscores) OR IELTS 7.0
2-Term		•			45/60		80	6.5	176	110	
1-Term			•		45/60	3.0	85	6.5	176	120	
Health Promotion and Health Behavior											
3-Term	•				45/60	2.5 Undergraduate degree in a relevant discipline	70	6.0	169	95	3.0 • B or higher grades in all graduate level classes • B or higher grade in all English language classes OR TOEFL 91 (18 subscores) OR IELTS 7.0
2-Term		•			45/60		80	6.5	176	110	
1-Term				•	45/60	3.0	85	6.5	176	120	
Industrial Engineering											
3-Term	•				30/45	2.5 Undergraduate degree in a relevant discipline	70	6.0	169	95	3.0 • B or higher grades in all graduate level classes • B or higher grade in all English language classes OR TOEFL 91 (18 subscores) OR IELTS 7.0
2-Term	•	•			30/45		80	6.5	176	110	
1-Term	•	•	•		35-36/45	3.0	85	6.5	176	120	
MS Business											
3-Term	•				30/45	2.5 Undergraduate degree in a relevant discipline	70	6.0	169	95	3.0 • B or higher grades in all graduate level classes • B or higher grade in all English language classes OR TOEFL 91 (18 subscores) OR IELTS 7.0
2-Term		•			30/45		80	6.5	176	110	
1-Term			•		35-36/45	2.5	85	6.5	176	120	
Materials Chemistry											
3-Term	•				30/45	2.5 Undergraduate degree in a relevant discipline	70	6.0	169	95	3.0 • B or higher grades in all graduate level classes • B or higher grade in all English language classes OR TOEFL 91 (18 subscores) OR IELTS 7.0
1-Term	•				35-36/45		3.0	85	6.5	176	

Entry and progression requirements are subject to change and may vary by program.

¹ Departments may be looking for specific prerequisite courses in determining relevant Undergraduate degree for admissibility to the Graduate Pathway Program.

Term	Start Dates				Credits*	Entry Requirements**	Progression Requirements				
	Fall	Winter	Spring	Summer			GPA	Undergraduate degree ¹	TOEFL iBT	IELTS	IELA
Mathematics											
3-Term				•	30/45	2.5 Undergraduate degree in a relevant discipline	70	6.0	169	95	3.0 • B or higher grades in all graduate level classes • B or higher grade in all English language classes OR TOEFL 91 (18 subscores) OR IELTS 7.0
2-Term	•				30/45		80	6.5	176	110	
Mechanical Engineering											
3-Term	•				30/45	2.5 Undergraduate degree in a relevant discipline	70	6.0	169	95	3.0 • B or higher grades in all graduate level classes • B or higher grade in all English language classes OR TOEFL 91 (18 subscores) OR IELTS 7.0
2-Term	•	•			30/45		80	6.5	176	110	
1-Term	•	•	•		35-36/45	3.0	85	6.5	176	120	

Entry and progression requirements are subject to change and may vary by program.

¹ Departments may be looking for specific prerequisite courses in determining relevant Undergraduate degree for admissibility to the Graduate Pathway Program.

[SAMPLE GRADUATE PROGRAM] Master's International Direct (MID) in Computer Science			
1-Term MID	Degree Program Components	Program Information	
Fall: September 14, 2020 Winter: December 30, 2020 Spring: March 25, 2021	45 credit hour program		
Entry Requirements	Term 1	Course Title	Credit Hours
• Bachelor's degree	ENGR 520	Intro to Portfolio	1
Language requirements	ALS 145	STEM Graduate Student Success *	2
• TOEFL iBT 80 (18 subscores)	WR 599	Academic Writing for Graduate Students	3
• IELTS 6.0 (5.5 subscores)	CS 5XX	Graduate level CS course option from list*	4
• IELA 176 (162 subscores)	CS 5XX	Graduate level CS course option from list*	4
	Total	14	
			Notes Sample list of course: CS 544: Operating Systems II CS 561: Software Engineering Methods CS 581: Programming Language I
			*Additional Entry Requirements: 2.0 GPA in 1 year of college level Math
			Complete 3 out of 6 courses below at the upper division level with a grade equivalent to a 3.0 in each individual course: Algorithm Design and Analysis Computer Architecture Operating Automata Theory/Theory of Computation Programming Language Fundamentals Compilers





ACADEMIC ENGLISH >>

The Academic English program at OSU prepares you for university study in the US. You will receive high-quality English language instruction and the academic skills to succeed at OSU.

What You Will Learn

- Understand US values in an academic setting
- Present spoken and written ideas accurately and effectively in English
- Write research papers with proper use of citations and references
- Read, understand and critically evaluate academic texts
- Understand and use vocabulary common to academic disciplines
- Take useful and accurate notes in academic lectures and presentations

Estimated Academic English Level Based on Test Scores

The table below shows what your estimated level of AE will be if you submit standardized test scores with your application. Students will be tested during Orientation to determine their final AE level placement.

Estimated AE Level	TOEFL iBT	IELTS	IELA
2	32-44	3.5-4.0	146 or less
3	45-59	4.5-5.0	147-161
4	60	5.5	162
5	70	6.0	169
6	80	6.5	176

Guaranteed Level

If you score lower on the placement test than your estimated level based on standardized tests, you are guaranteed to be placed no more than one level lower than your estimated level. If you score higher than your estimated level, you will be placed according to your placement test score.



Find out more at www.intostudy.com/osu/academic-english

Key Program Facts
Each term is 11 weeks
High school diploma required
No English language requirement; students assessed and placed upon arrival
Minimum age 16
7 levels of instruction from true beginner to advanced
18 hours of instruction per week

Progression Requirements
Must meet academic entry requirements for desired program

Undergraduate 4-Term Pathway/ Undergraduate Transfer Program
Completion of AE Level 3 with C/Pass or higher in all classes

Undergraduate 3-Term Pathway/ Undergraduate Transfer Program
Completion of AE Level 4 with C/Pass or higher in all classes

Undergraduate 2-term Transfer Program
Completion of AE Level 5 with C/Pass or higher in all classes

Undergraduate 1-Term Transfer Program
Completion of AE Level 6 with C/Pass or higher in all classes

Graduate 3-Term Pathway
Completion of AE Level 5 with C/Pass or higher in all classes

Graduate 2-Term Pathway
Completion of AE Level 6 with a C+/Pass or higher in all classes

Undergraduate International Direct Admission
Completion of AE Level 5 with C/Pass or higher in all classes

Direct Transfer Undergraduate Admission
Completion of AE Level 6 with C/Pass or higher in all classes.

Direct Graduate Admission
Completion of AE Level 6 with B/Pass or higher in all classes. Some departments require standardized test scores. Application deadlines vary and additional requirements may be needed depending on program.

STUDY ABROAD WITH ENGLISH

Study Abroad with English combines Academic English and OSU undergraduate classes. You will earn college credits in your field of interest without enrolling in a long-term degree. The program is customized for your English level and academic interest. Courses are available in liberal arts, business, engineering, public policy and the sciences.

Program Overview

Part 1: Academic English

Part 2: Academic English Classes and OSU Classes

Key Program Facts		
Each term is 11 weeks	Minimum age 16	
High school diploma required with 2.5 GPA or completion of at least one year of study at a university overseas with a minimum 2.25 GPA		
Part 1: No English Language Requirement		
Part 2: English language requirements:		
TOEFL iBT 60 or	IELTS 5.5 or	IELA 162 or
Completion of Level 4 with minimum C/Pass grades in Study Abroad with English Part 1 or Academic English		

Find out more at www.intostudy.com/osu/study-abroad-with-english

VISITING INTERNATIONAL STUDENT PROGRAM

Experience life on an American college campus while taking OSU credit-bearing classes as a non-degree student for up to one year. You will have access to OSU courses in liberal arts, business, engineering, public policy and the sciences. Other courses may be available on a case-by-case basis.

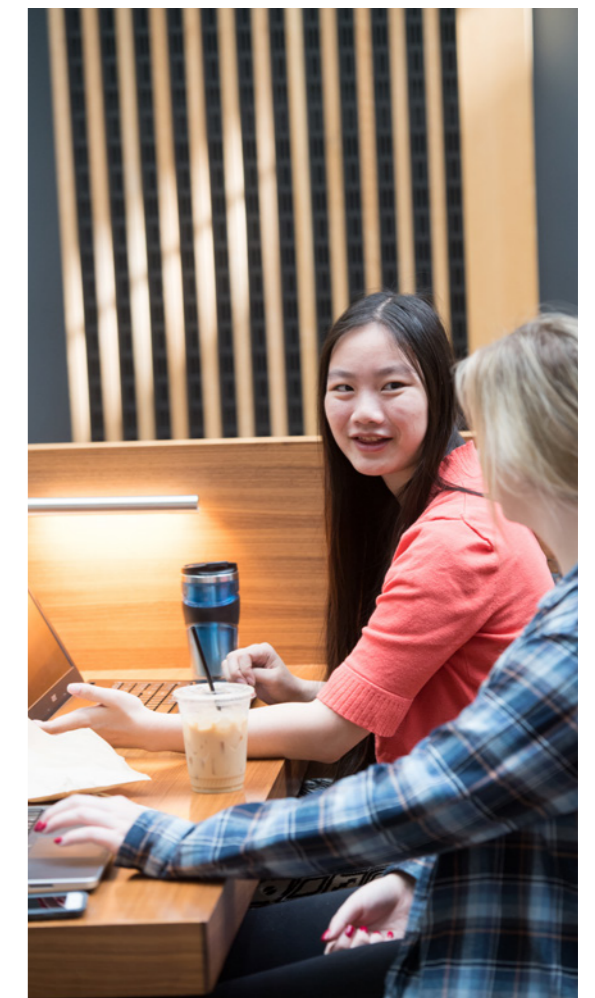
Key Program Facts			
Each term is 11 weeks	Minimum age 16		
High school diploma required with 3.0 GPA or completion of at least one year of study at a university overseas with a minimum 2.25 GPA			
English language requirements:			
TOEFL iBT 80 (minimum 16 subscores) or	IELTS 6.5 or	IELA 176 or	Completion of AE Level 6

Learn more at www.intostudy.com/osu/visiting-international-student-program

SUMMER AND SPECIAL PROGRAMS

INTO OSU offers customized, short-term programs for groups of 10 or more. We offer English teacher training programs and full-time academic programs to improve English and experience US university study. We also offer part-time programs available on a B2 or tourist visa exploring various focus areas.

To learn more about our current programs or to submit a request for a customized program, please visit intoosu.oregonstate.edu/special-programs or email into.specialprograms@oregonstate.edu



Start Dates	Fall 2020	Winter 2021	Spring 2021	Summer 2021
Academic English				
Study Abroad with English Part 1				
Study Abroad with English Part 2	Sep 16, 2020	Dec 29, 2020	Mar 24, 2021	Jun 16, 2021
Visiting International Student Program				



OSU UNDERGRADUATE SCHOLARSHIPS

ENTRY SCHOLARSHIP

Entry Routes: International Direct (ID), International Year One (IYO), Undergraduate Transfer Program (UTP), Transfer

Scholarship	Amount	ID	IYO	UTP	Transfer	Eligibility, How to Apply & Notes
Provost's Scholarship for Excellence	\$6,000/year, up to 4 years	●	●	●	●	<ul style="list-style-type: none"> No application process New students with GPA of 3.5+ qualify for consideration Renewable with a 3.0 GPA No application or action required for renewal
IB or A-Level Scholarship	\$6,000/year, up to 4 years	●	●	●	●	<ul style="list-style-type: none"> No application process New students with the full IB Diploma or three A-levels qualify for consideration UTP or transfer students admitted with full IB Diploma and A-Levels are eligible for consideration. Transfer students admitted with post-graduate transcripts are not eligible IB Diploma score of 30 or higher or A-levels with minimum of two B's and C Renewable with a 3.0 GPA No application or action required for renewal
Regional Scholarship	Variable one-time scholarship	●	●	●	●	<ul style="list-style-type: none"> No application process Based on availability according to region of the world This scholarship is not merit-based To check availability, connect with your local OSU representative or contact intladmit@oregonstate.edu
Honorary Scholarship for Leadership <small>In honor of our former colleagues Ian Sanders, Nancy Heiligman and Mark McCambridge who exhibited leadership and dedication to Higher Education</small>	\$10,000 one-time scholarship	●				<ul style="list-style-type: none"> Application process based on merit and evidence of leadership For students admitted as an International Direct student with a GPA of 3.75+ Applicants should submit an essay of 500-1000 words outlining their leadership experience to intladmit@oregonstate.edu Scholarship recipients will have opportunities for leadership roles during the first year of their program

PLUS UNDERGRADUATE CONTINUED SUCCESS SCHOLARSHIP

Continued Success Scholarship	\$3,000 or \$5,000/year, up to 3 years	●	●	●		<ul style="list-style-type: none"> No application process and based on GPA in last term of ID, IYO or UTP Students who achieve 3.75 – 4.0 overall cumulative GPA will automatically qualify for \$5,000 annual scholarship Students who achieve 3.5 – 3.74 overall cumulative GPA will automatically qualify for \$3,000 annual scholarship Renewable with a 3.5 GPA. No action required.
--------------------------------------	--	---	---	---	--	---

GRADUATE SCHOLARSHIPS

ENTRY SCHOLARSHIP

Entry Routes: Graduate Pathway (GPW), Master's International Direct (MID)

Scholarship	Amount	GPW	MID	Eligibility, How to Apply & Notes
Regional Scholarship	Variable one-time scholarship	●	●	<ul style="list-style-type: none"> No application process Based on availability according to region of the world This scholarship is not merit-based To check availability, connect with your local OSU representative or contact intladmit@oregonstate.edu

PLUS GRADUATE CONTINUED SUCCESS SCHOLARSHIP

Continued Success Scholarship	\$3,000 or \$5,000/year, up to 3 years	●	●	<ul style="list-style-type: none"> No application process and based on GPA in last term of GPW or MID Students who achieve 3.75 – 4.0 overall cumulative GPA will automatically qualify for \$5,000 annual scholarship Students who achieve 3.50-3.74 overall cumulative GPA will automatically qualify for \$3,000 annual scholarship
--------------------------------------	--	---	---	---

Scholarship amounts and availability requirements are subject to change. All OSU scholarships listed above require a non-resident tuition status. You must be accepted to the university first in order to receive a scholarship. Amounts subject to change. Limited awards at maximum value.



OSU offers four terms per year (Fall, Winter, Spring, Summer). Each term is around 11 weeks or three months long.

Undergraduate Programs

Undergraduate Programs include International Year One (IYO), Undergraduate Transfer (UTP) and International Direct (ID)

Program Length	1 Term	2 Terms	3 Terms	4 Terms
	UTP	UTP	ID, IYO, UTP	IYO, UTP
TUITION AND FEES	\$12,390	\$24,780	\$32,310	\$38,990
Housing and Meals*	\$4,080	\$8,160	\$12,240	\$16,320
Books and Supplies	\$670	\$1,300	\$2,000	\$2,500
Insurance	\$1,280	\$2,560	\$3,840	\$5,120
LIVING EXPENSES	\$6,030	\$12,020	\$18,080	\$23,940
TOTAL EXPENSES	\$18,420	\$36,800	\$50,390	\$62,930

Note: prices may differ for Undergraduate transfers direct, please refer to intostudy.com/osu/costs or more information

Graduate Programs

Program Length	Graduate Pathway			Graduate Pathway- MBA and MSB			Master's International Direct ECE and CS	Graduate Direct-Engineering		Graduate Direct-MBA	
	1 Term	2 Terms	3 Terms	1 Term	2 Terms	3 Terms	1 Term	1 Term	3 Terms ¹	1 Term	3 Terms ²
TUITION AND FEES	\$12,200	\$24,400	\$31,830	\$14,920	\$29,840	\$38,910	\$12,200	\$12,200	\$29,750	\$14,920	\$38,550
Housing and Meals*	\$4,080	\$8,160	\$12,240	\$4,080	\$8,160	\$12,240	\$4,080	\$4,080	\$12,240	\$4,080	\$12,240
Books and Supplies	\$670	\$1,300	\$2,000	\$670	\$1,300	\$2,000	\$670	\$670	\$2,000	\$670	\$2,000
Insurance	\$1,280	\$2,560	\$3,840	\$1,280	\$2,560	\$3,840	\$1,280	\$1,280	\$3,840	\$1,280	\$3,840
LIVING EXPENSES	\$6,030	\$12,020	\$18,080	\$6,030	\$12,020	\$18,080	\$6,030	\$6,030	\$18,080	\$6,030	\$18,080
TOTAL EXPENSES	\$18,230	\$36,420	\$49,910	\$20,950	\$41,860	\$56,990	\$18,230	\$18,230	\$47,830	\$20,950	\$56,630

Academic English

Program Length	Academic English/Study Abroad with English Part 1	Visiting International Student Program/Study Abroad with English Part 2
	1 Term	1 Term
TUITION AND FEES	\$5,830	\$10,770
Housing and Meals*	\$4,080	\$4,080
Books and Supplies	\$500	\$670
Insurance	\$1,280	\$1,280
LIVING EXPENSES	\$5,860	\$6,030
TOTAL EXPENSES	\$11,690	\$16,800

All prices are estimated from 2019-20 and are subject to change. Please visit www.intostudy.com/osu/costs for exact pricing.

For details about Terms and Conditions, Country Scales and English Waivers, visit www.intostudy.com/osu/terms

* Housing and meals are based on estimated costs and may vary depending on housing and meal plans selected and personal preference. Living expenses includes \$840 meal plan per term.
¹Based on 9 credits per term
²Based on 12 credits per term

HOW TO APPLY

Choose from two easy ways to apply

1 Apply via your local INTO educational counselor

2 Apply online
Complete our online application form:

INTO OSU Programs:
apply.intostudy.com/osu

International Direct (Undergraduate):
apply.intostudy.com/osu

Direct Graduate:
oregonstate.force.com/GradAppLogin

Master's International Direct:
apply.intostudy.com/osu



INTO Oregon State University

Oregon State University
1701 SW Western Boulevard
Corvallis, OR 97333
USA

T: +1 541 737 2464
F: +1 541 737 4220
E: intladmit@oregonstate.edu

www.intostudy.com/osu

PATHWAY ADMISSION
www.intostudy.com/osu

DIRECT ADMISSION
admissions.oregonstate.edu/international



For more information on International Admissions, scan here:

facebook.com/INTO.oregonstate

twitter.com/INTO_OSU

instagram.com/INTOoregonstate

myin.to/OSU_YouTube



WeChat



YOUVISIT VIRTUAL TOUR
www.youvisit.com/tour/oregonstate

Contact a current student by joining us on Facebook.com/INTO.oregonstate or via WeChat: [INTO_OSU](https://myin.to/INTO_OSU)

INTO

Through innovative partnerships with leading universities, we expand opportunities for higher education, ensuring success and transforming the lives of our students and staff.

INTO GIVING

Working across the globe, INTO Giving supports projects that increase access to education and improve the quality of teaching and learning. For more information, visit www.into-giving.com

Discover more online

For counselors:
partnerportal.intoglobal.com/osu

For students:
www.intostudy.com/osu

Connect with us



Education counselor's stamp