



BUICK ENCLAVE 012



ON YOUR SMARTPHONE,
DOWNLOAD A QR CODE READER
AND SCAN, OR GO TO
ENCLAVEBROCHURE.COM
TO DISCOVER MORE.



ON YOUR SMARTPHONE,
DOWNLOAD A QR CODE READER
AND SCAN, OR GO TO
ENCLAVEBROCHURE.COM
TO DISCOVER MORE.

What matters is what matters to you.

Defined by you. Enjoyed by you.

And that's why we say, "come as you are."
This is not luxury as you have always known it.
It's luxury the way it should be.

YOUR KIND
OF LUXURY.



Information provided by
DEALER
MANAGEMENT SYSTEM

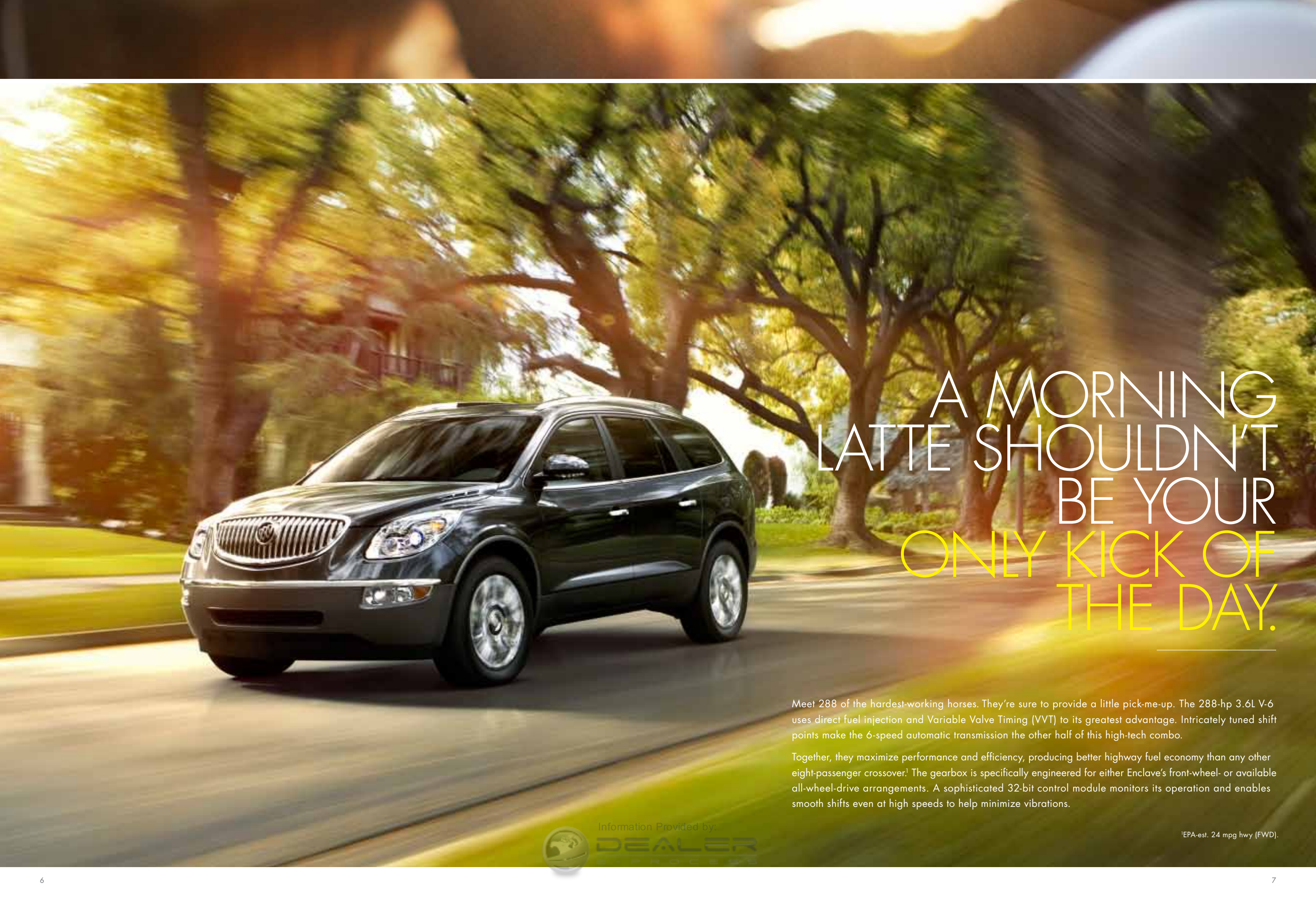
NO DRESS CODE. NO RESERVATIONS REQUIRED.
WELCOME TO ROOM FOR EIGHT AND A KIND
OF LUXURY YOU'LL CALL YOUR OWN.

Sure it's stylish, spacious and well appointed. But what really sets Enclave apart is its open, clean, elegant surroundings. It's smart without taking itself too seriously. An ingenious navigation and entertainment system,¹ an active approach to safety and intelligent all-wheel drive¹ are just a few of the qualities that simply make Enclave, Enclave.

Information Provided by:

DEALER

¹Optional equipment.



A MORNING
LATTE SHOULDN'T
BE YOUR
ONLY KICK OF
THE DAY.

Meet 288 of the hardest-working horses. They're sure to provide a little pick-me-up. The 288-hp 3.6L V-6 uses direct fuel injection and Variable Valve Timing (VVT) to its greatest advantage. Intricately tuned shift points make the 6-speed automatic transmission the other half of this high-tech combo.

Together, they maximize performance and efficiency, producing better highway fuel economy than any other eight-passenger crossover! The gearbox is specifically engineered for either Enclave's front-wheel- or available all-wheel-drive arrangements. A sophisticated 32-bit control module monitors its operation and enables smooth shifts even at high speeds to help minimize vibrations.



¹EPA-est. 24 mpg hwy (FWD).

FIND YOUR TRUE NORTH—SOUTH, EAST & WEST.

We gave Enclave the technologies you need to find whatever you're searching for. To help guide you, the available voice- and touch-screen-activated DVD Navigation System¹ charts over 6 million miles of North American roads.

To negotiate those roads, optional NavTraffic² incorporates real-time road conditions right into your NAV screen, directing you around trouble spots and toward the most efficient route. And while you're on the road, keep your hands on the wheel thanks to Bluetooth^{®3} connectivity. As we like to say, getting there is all the fun.

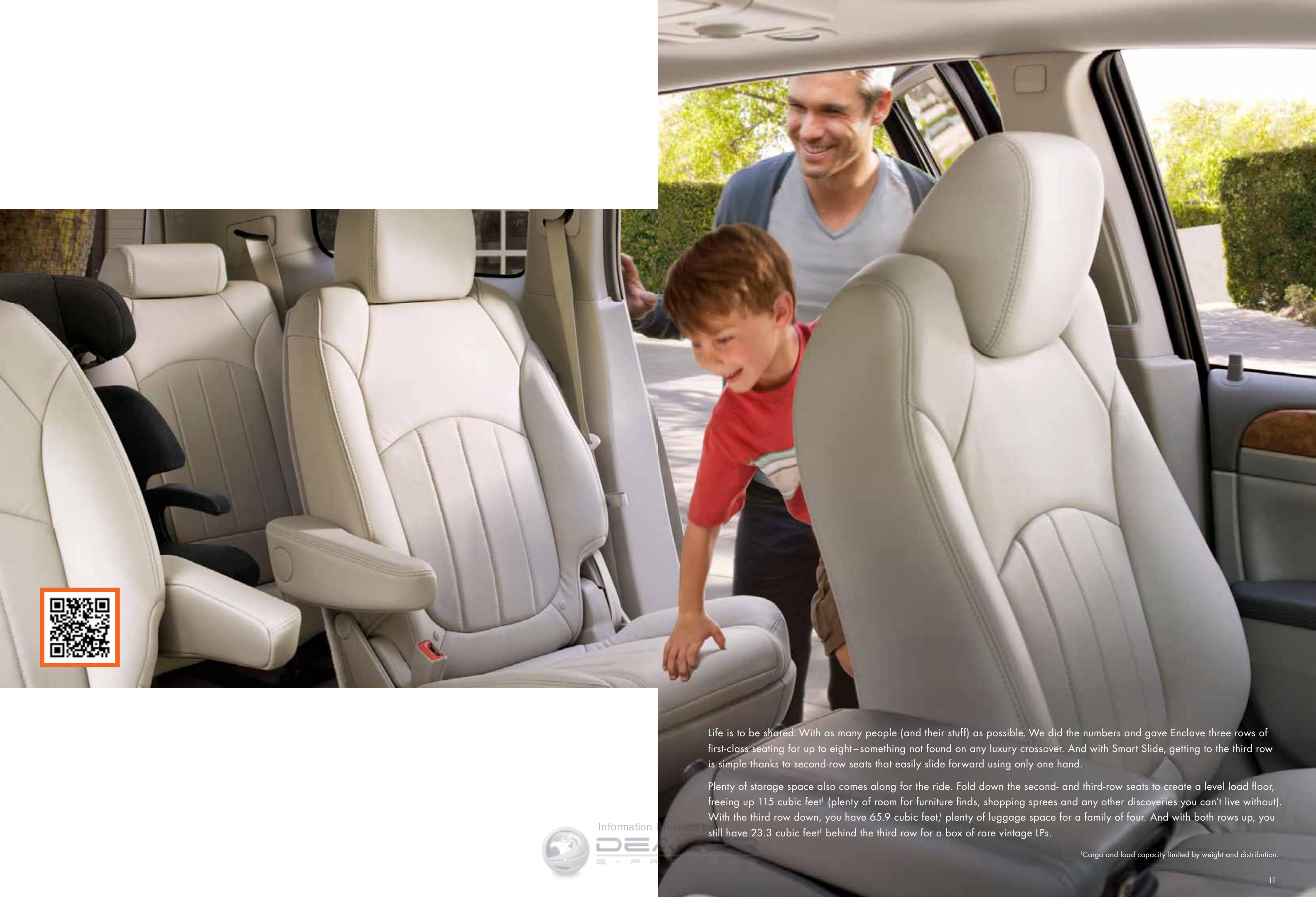
¹Map coverage available in the United States, U.S. Virgin Islands, Puerto Rico and Canada. ²NavTraffic requires a monthly subscription after introductory trial service, sold separately by SiriusXM. NavTraffic only available in select markets. For more information, visit siriusxm.com/navtraffic. ³Go to gm.com/bluetooth to find out which Bluetooth phones are compatible with the vehicle.

Information Provided by

DEALER
E-PROCESS



Information Provided by:
ALER
PROCESS



Life is to be shared. With as many people (and their stuff) as possible. We did the numbers and gave Enclave three rows of first-class seating for up to eight—something not found on any luxury crossover. And with Smart Slide, getting to the third row is simple thanks to second-row seats that easily slide forward using only one hand.

Plenty of storage space also comes along for the ride. Fold down the second- and third-row seats to create a level load floor, freeing up 115 cubic feet¹ (plenty of room for furniture finds, shopping sprees and any other discoveries you can't live without). With the third row down, you have 65.9 cubic feet¹ plenty of luggage space for a family of four. And with both rows up, you still have 23.3 cubic feet¹ behind the third row for a box of rare vintage LPs.

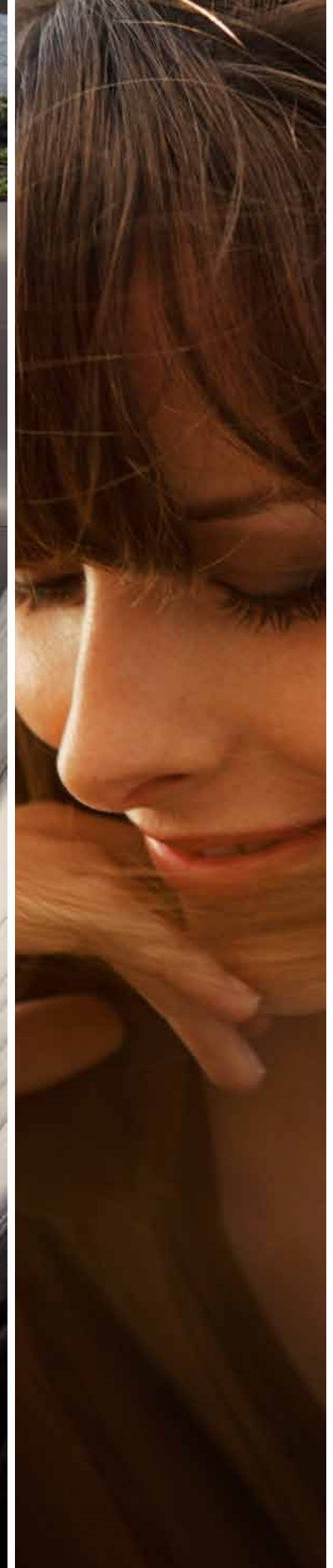


Information provided by

¹Cargo and load capacity limited by weight and distribution.

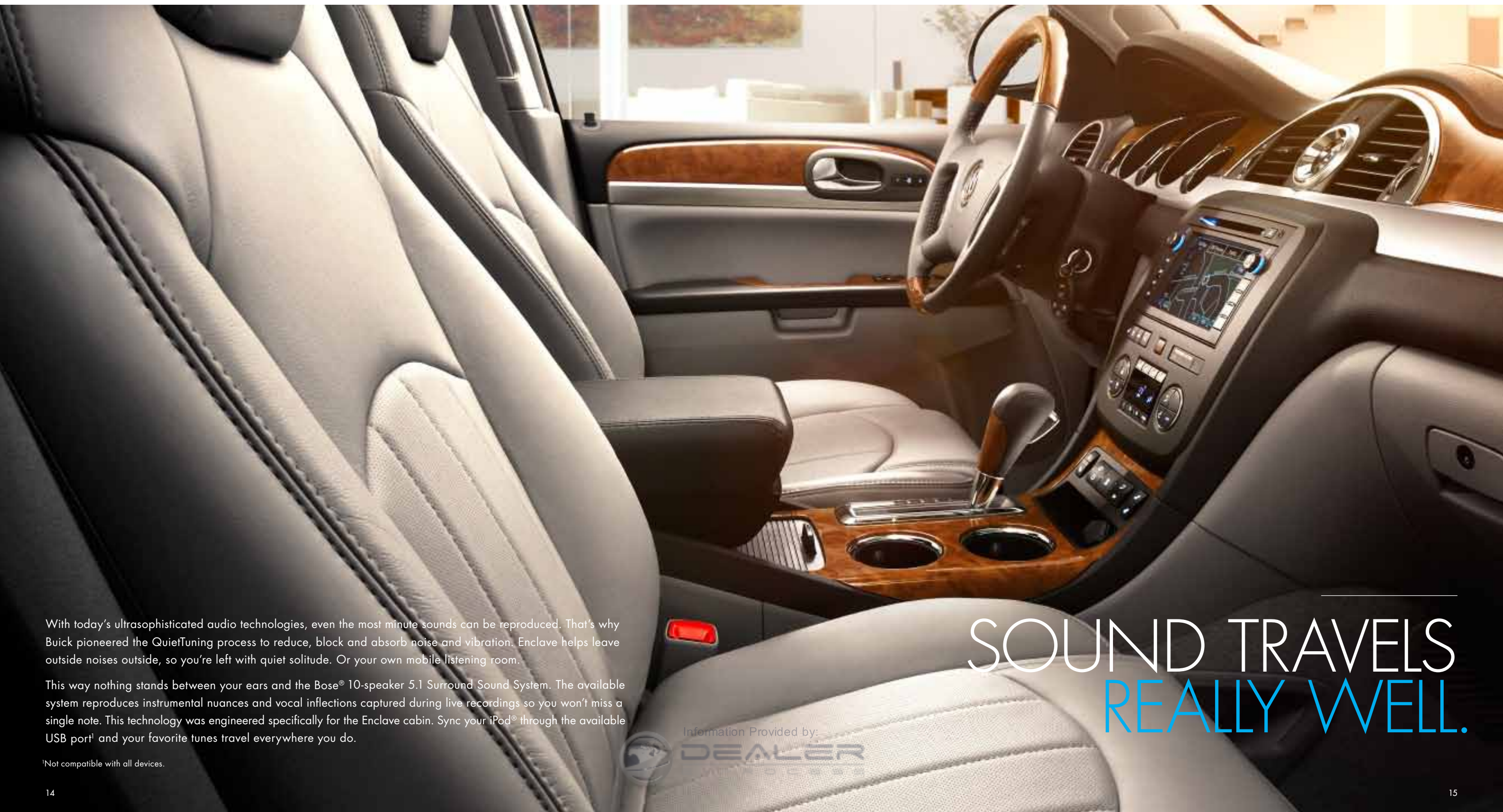


LOVE
ALL THE
ONES
YOU'RE
WITH.



Our design theme is a decidedly relaxed one. Beyond its warm camphor wood tones and brushed aluminum, Enclave is built around comfort for short hops to the store and the longest trips across the country. French-stitched seams highlight available leather seating surfaces infused with silk and perforated for breathing and sound deadening. The driver and front-passenger seats offer optional heating and cooling, while the driver seat is power adjustable up to eight directions, including lumbar. Everyone can enjoy Enclave's seating comfort that results from 1,400 hours of real-world testing and research.





With today's ultrasophisticated audio technologies, even the most minute sounds can be reproduced. That's why Buick pioneered the QuietTuning process to reduce, block and absorb noise and vibration. Enclave helps leave outside noises outside, so you're left with quiet solitude. Or your own mobile listening room.

This way nothing stands between your ears and the Bose® 10-speaker 5.1 Surround Sound System. The available system reproduces instrumental nuances and vocal inflections captured during live recordings so you won't miss a single note. This technology was engineered specifically for the Enclave cabin. Sync your iPod® through the available USB port* and your favorite tunes travel everywhere you do.

*Not compatible with all devices.

SOUND TRAVELS REALLY WELL.

Information Provided by:
DEALER
MANAGER



TWO NICE
ANSWERS TO,
"ARE WE
THERE YET?"

Enclave packs a lot of entertainment value. There are plenty of sights to explore above and straight ahead. Bring the outside in to illuminate all the space with an available power sunroof and a companion 3-foot by 4-foot skylight. The sunroof tilts up or slides open while the skylight offers a sunshade to control all those rays. Thrill to the joy of wide open-air viewing.

Second- and third-row passengers aren't left out; they will enjoy the optional DVD Rear-Seat Entertainment System with an 8-inch LCD flat-screen monitor and two pairs of wireless headphones, plus a remote control. Soon they'll be saying, "We're here already?"



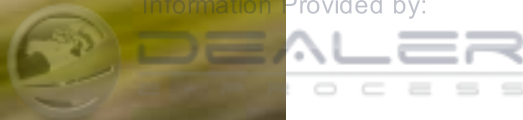
Information Provided by:





WHILE YOU'RE
OUT DRIVING

Information Provided by:





IT'S OUTTHINKING.

It's amazing the places you can safely and confidently go when obstacles seem to vanish. That's where Enclave's available All-Wheel Drive (AWD) comes in. When conditions (weather or otherwise) demand more traction, the intelligent AWD system doesn't ask you to push buttons. It's automatically activated when you need it most. By constantly monitoring traction at all four wheels, whenever it detects slip, power is delivered to the wheels with the best grip.

Unlike passive systems that merely react to wheel spin, Enclave's AWD reads a wide variety of vehicle conditions to continuously monitor and provide optimal power and control between all wheels. This proactive system optimizes both handling and traction independently and simultaneously, providing both slippery-surface traction and dry-road performance benefits. Time to go.

Information Provided by:
DEALER
E-PC

We're daydream believers. At Buick, we spend our days dreaming about tomorrow. Thinking about how to bring luxury to life in personal, thoughtful ways for you.



Sometimes these ideas take the shape of industry-redefining manufacturing processes. Other times they result in an available remote starter that gets Enclave up and running with climate controls going (based on previous settings) from nearly 200 feet away. Then there are flashes of brilliance that create a new way to test-drive cars long before there's an actual car.

BETTER DRIVING THROUGH CLONING. Using technologies that any video gamer would love, Buick engineers created exact digital replicas of some of the world's most challenging roads so they could drive virtual cars on them. An innovative road scanner makes micro-detailed 3-D digital representations of real-world road surfaces. Then equally detailed digital Buick vehicles are subjected to rigorous testing before a physical prototype ever sees the light of day to find and address issues early in the development cycle.

BUILDING A BETTER WORLD. The Lansing Delta Township facility, where Enclave is produced, is an environmental flagship. This Leadership in Energy and Environment Design (LEED) certified facility is quite impressive. It's a large automotive assembly plant that received the gold level of LEED designation.

The Delta Plant is proud of the following innovations: A quarter of its construction materials are made of recycled components. Its roof is made of white polymer that deflects heat, reducing cooling costs. Rainwater is collected from its roof and stored in cisterns, part of the plant's 45 percent reduction in non-manufacturing water use. Lighting is carefully conserved. Ozone-depleting substances were eliminated from its heating, cooling, refrigeration and fire-suppression systems. And that's just the beginning of its initiatives.

ENCLAVE'S ADVANCED SUSPENSION SYSTEM IS THE RESULT OF NEVER SETTLING FOR LESS THAN A SMOOTH RIDE.



Our conscience is your guide. Enclave's approach to safety helps you and your companions feel safe and secure before, during and after your travels.



Its holistically designed structure strategically positions high-strength steel to create a protective safety cage for everyone's protection. Plus, its wide track, long wheelbase and low ride height help provide a stable structure for safe, confident handling.

Once inside, all rows have head curtain side-impact air bags with rollover protection, along with driver and front-passenger side-impact and dual-stage frontal air bags.¹ In addition, highly sophisticated sensors are designed to anticipate rollovers and help protect vehicle occupants before a crash occurs. The sensors predict in a fraction of a second whether a rollover is likely and send a signal to deploy front-seat safety belt pretensioners and head curtain side-impact air bags to protect occupants.

In 2011, Enclave earned the National Highway Traffic Safety Administration's highest possible five-star Overall Vehicle Score for safety;² as well as a Top Safety Pick by the Insurance Institute for Highway Safety.



Enclave also includes available high-intensity discharge articulating xenon headlamps to help you see around curves and beyond corners. A quick glance in the rearview mirror allows you to see objects behind you with the available Rearview Camera System. And with OnStar³—standard for 6 months—Automatic Crash Response can get you help fast even if you can't ask for it. Plus, with the OnStar RemoteLink⁴ smartphone app, you have access to real-time info (fuel level, remaining oil life, tire pressure, etc.) about your Enclave. You're also able to perform commands like starting (if equipped with the Remote Vehicle Starter System) and unlocking its doors from almost anywhere.



Information Provided by
DEALER
E-PROCESS

¹Always use safety belts and the correct restraint for your child's age and size. Even in vehicles equipped with the Passenger Sensing System, children are safer when properly secured in a seat in the appropriate infant, child or booster seat. Never place a rear-facing infant restraint in the front seat of any vehicle equipped with a passenger air bag. See the Owner's Manual and child safety seat instructions for more safety information. ²Government five-star Safety Ratings are part of the National Highway Traffic Safety Administration's (NHTSA's) New Car Assessment Program (www.safercar.gov). ³OnStar acts as a link to existing emergency service providers. Visit onstar.com for coverage map, details and system limitations. ⁴Available on Android™ and iPhone® platforms.

Standard Equipment

Power and Performance

Drivetrain Front-Wheel Drive (FWD)
Engine 3.6L V-6 with VVT and direct injection
Transmission 6-speed automatic
Suspension Premium ride, 4-wheel independent
Steering Power, variable effort
Brakes 4-wheel anti-lock, 4-wheel disc
Traction Control Full range
StabiliTrak Stability control system
Exhaust Dual with bright chrome tips

Comfort and Convenience

Seat Trim Deluxe Cloth
Seating 7-passenger seating, includes second-row captain's chairs, flat-folding and Smart Slide access to the third-row flat-folding 60/40 bench
Driver Seat Adjuster 8-way power with power recline and lumbar control
Front-Passenger Seat Adjuster 2-way power (fore/aft) with manual recline and lumbar
Instrumentation Includes Driver Information Center, tachometer, speedometer, fuel, coolant temperature, battery, gear selector, outside air temperature, compass display and Oil Life Monitor
Steering Wheel Leather-wrapped with mahogany wood accents, tilt and telescopic steering
Steering-Wheel-Mounted Controls For audio and cruise control

Cruise Control
Mirror Inside rearview, auto-dimming
Bluetooth®¹ Cell-phone connectivity to vehicle audio system
Visors Driver and front-passenger illuminated vanity mirrors
Climate Control Air conditioning, tri-zone automatic, with individual climate settings for driver, front passenger and rear-seat occupants
Windows Power with driver express-up and passenger express-down features
QuietTuning Buick-pioneered process to reduce, block and absorb noise and vibration to create a quiet interior cabin

Entertainment Systems

AM/FM Stereo CD player, MP3 playback, speed-compensated volume, Radio Data System (RDS),² TheftLock, audio input and 6 speakers
SiriusXM Satellite Radio³ Includes 3 trial months of service. For more information, visit siriusxm.com.

Safety and Security

Air Bags⁴ Dual-stage frontal and side-impact, driver and front passenger and side curtain for first-, second- and third-row outboard passengers with Passenger Sensing System and rollover protection
Power Door Locks Programmable with rear child security
OnStar⁵ 6 months of Directions & Connections Plan
Theft-Deterrent System PASS-Key III, engine immobilizer and content theft alarm
Tire Pressure Monitor System

Styling and Functionality

Lights High-Intensity Discharge (HID) xenon, projector headlamps, high/low bi-functional with blue-tint lenses and chromed bezels, automatic on/off
Fog Lamps Front halogen with projector technology
Daytime Running Lamps With automatic exterior lamp control
Glass Solar-Ray deep-tinted, rear side, quarter panel and liftgate
Outside Mirrors Heated, power-adjustable, body-color, manual-folding with integrated turn signal indicators
Wipers Front and rear intermittent with washers
Rear Liftgate Power
Luggage Rack Chromed side rails, roof-mounted (P6A)
Wheels 19" 15-spoke machined aluminum
Tires P255/60R19 all-season

Available Options

All-Wheel-Drive System
 8-Passenger Seating
 Trailing Provision Package
 Sunroof
 (PCU) Bose® Sound System AM/FM Stereo CD player, MP3 playback, RDS,² TheftLock, audio input, Bose 10-speaker system, rear audio controls with 2 headphone jacks (headphones not included), 115-volt household-style outlet and USB port⁶

Equipment Groups

Convenience

Includes All Standard Equipment Plus:

Ultrasonic Rear Parking Assist
 Rearview Camera System
 Remote Vehicle Starter System

Available Options for Convenience Group

All-Wheel-Drive System
 8-Passenger Seating
 Trailing Provision Package
 Sunroof
 (PCU) Bose Sound System AM/FM Stereo CD player, MP3 playback, RDS,² TheftLock, audio input, Bose 10-speaker system, rear audio controls with 2 headphone jacks (headphones not included), 115-volt household-style outlet and USB port⁶

Leather

Includes All Standard Equipment Plus:

Ultrasonic Rear Parking Assist
 Rearview Camera System
 Remote Vehicle Starter System

Leather Seating Surfaces
 Driver Seat, Heated With Memory
 Front Passenger Seat, Heated, 4-Way Power and Lumbar

Available Options for Leather Group

All-Wheel-Drive System
 8-Passenger Seating
 Trailing Provision Package
 Sunroof
 Second-Row Console
 (P6A) Wheels, 19" Chrome-Clad Aluminum
 (PCU) Bose Sound System
 (UJ) Audio System with Rear-Seat Entertainment AM/FM Stereo CD player, MP3 playback, RDS,² TheftLock, audio input and Bose 10-speaker 5.1 Surround Sound DVD entertainment system, includes 8" color screen, rear audio controls with 2 headphone jacks and 2 wireless headphones, 115-volt household-style outlet and USB port⁶
 (UUM) Audio System with Navigation⁷ AM/FM Stereo CD player, MP3 playback, RDS,² TheftLock, audio input, 5" color display, navigation, Rearview Camera System, Bose 10-speaker system, rear audio controls with 2 headphone jacks (headphones not included), 115-volt household-style outlet and USB port⁶
 (U4H) Audio System with Rear-Seat Entertainment and Navigation⁷ AM/FM Stereo CD player, MP3 playback, RDS,² TheftLock, audio input, 5" color display, navigation, Rearview Camera System and Bose 10-speaker 5.1 Surround Sound DVD entertainment system, includes 8" color screen, rear audio controls with 2 headphone jacks and 2 wireless headphones, 115-volt household-style outlet and USB port⁶

Premium

Includes All Standard Equipment Plus:

Ultrasonic Rear Parking Assist
 Rearview Camera System
 Remote Vehicle Starter System

Leather Seating Surfaces
 Driver Seat, Heated With Memory
 Front Passenger Seat, Heated, 4-Way Power and Lumbar

(PCU) Bose Sound System
 Headlamps, Articulating
 Power Folding Mirrors
 115-Volt Power Outlet
 Seats, Front Heated and Cooled
 Power Tilt/Telescopic Steering Column
 (P6A) Wheels, 19" Chrome-Clad Aluminum

Available Options for Premium Group

All-Wheel-Drive System
 8-Passenger Seating
 Trailing Provision Package
 Sunroof
 Second-Row Console
 (PPE) Wheels, 20" Chrome-Clad Aluminum⁸
 (UJ) Audio System with Rear-Seat Entertainment
 (UUM) Audio System with Navigation⁷
 (U4H) Audio System with Rear-Seat Entertainment and Navigation⁷

Specifications

Dimensions (inches)

Wheelbase	118.9
Overall length	201.8
Body width	79.0
Overall height, with luggage rack	72.5
Overall height, w/o luggage rack	69.6
Minimum ground clearance, front	8.4
Head room, first row	40.4
Head room, second row, with sunroof	38.7
Head room, second row, w/o sunroof	39.3
Head room, third row	37.2
Shoulder room, first row	62.0
Shoulder room, second row	61.4
Shoulder room, third row	57.4
Hip room, first row	57.4
Hip room, second row	57.0
Hip room, third row	48.3
Leg room, first row	41.3
Leg room, second row	36.9
Leg room, third row	33.2

Specifications and Capacities

Engine Type	3.6L V-6 direct injection
Horsepower	288 @ 6300 rpm
Torque	270 lb-ft @ 3400 rpm
EPA-estimated mpg	17 city/24 hwy FWD 16 city/22 hwy AWD
Cargo Volume (cu. ft.) ⁹	11.5 behind first-row seats with second and third row folded 65.9 behind second-row seat with third row folded 23.3 behind third-row seat
Seating Capacity	2/2/3 or 2/3/3 (front/middle/rear)
Fuel Tank (approx.)	22 gallons
Base Curb Weight	4,780 FWD 4,980 AWD
Max. Trailer Weight ¹⁰	4,500-lb rating with available Trailing Provision Package (2,000 lbs without package)



MAKE IT YOUR OWN.

Make Enclave your own by ordering it with just the standard equipment, or choose one of the additional equipment groups and its available options.

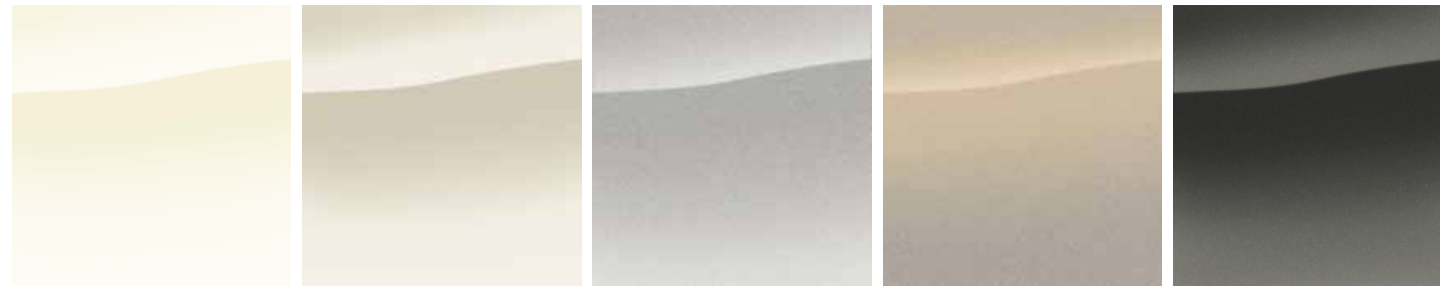
¹Go to gm.com/bluetooth to find out which Bluetooth phones are compatible with the vehicle. ²RDS functions only where stations broadcast RDS information. ³Requires a subscription, sold separately by SiriusXM after trial period. If you decide to continue your SiriusXM Satellite Radio service at the end of your introductory trial, service will automatically renew and bill until you call SiriusXM at 1-866-635-2349 to cancel. See SiriusXM customer agreement for complete terms at siriusxm.com. Available only to those at least 18 years of age in the 48 contiguous United States and the District of Columbia. ⁴Always use safety belts and the correct restraint for your child's age and size. Even in vehicles equipped with the Passenger Sensing System, children are safer when properly secured in a rear seat in the appropriate infant, child or booster seat. Never place a rear-facing infant restraint in the front seat of any vehicle equipped with a passenger air bag. See the Owner's Manual and child safety seat instructions for more safety information. ⁵OnStar services require vehicle electrical system (including battery), wireless service and GPS satellite signals to be available and operating for features to function properly. OnStar acts as a link to existing emergency service providers. Subscription Service Agreement required. Call 1-888-4ONSTAR (466-7827) or visit onstar.com for OnStar's Terms and Conditions, Privacy Policy, details and system limitations. ⁶Not compatible with all devices. ⁷Map coverage available in the United States, U.S. Virgin Islands, Puerto Rico and Canada. ⁸Use only GM-approved tire and wheel combinations. For important tire and wheel information, go to gmaccessorieszone.com or see your dealer for details. ⁹Cargo and load capacity limited by weight and distribution. ¹⁰Maximum trailer weight ratings are calculated assuming a base vehicle, except for any option(s) necessary to achieve the rating, plus driver. The weight of other optional equipment, passengers and cargo will reduce the maximum trailer weight your vehicle can tow. See your dealer for additional details.



Information Provided by
DEALERS
 E-PROCESS

Color and Materials/Wheels

Exterior Colors



White Opal

White Diamond Tricoat¹

Quicksilver Metallic

Gold Mist Metallic

Stone Gray Metallic²



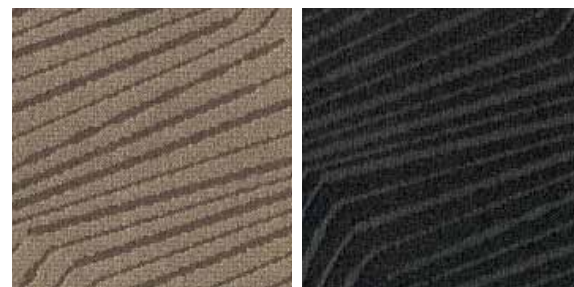
Cocoa Metallic

Crystal Red Tintcoat¹

Ming Blue Metallic

Carbon Black Metallic¹

Interior Colors



Cashmere Cloth

Ebony Cloth



Cashmere leather seating surfaces

Ebony leather seating surfaces

Titanium leather seating surfaces

Wheels



P64 19" 15-spoke machined aluminum

P6A 19" 9-spoke chrome-clad aluminum

PPE 20" chrome-clad aluminum

¹Additional charge, premium paint.

²Late availability.

Important Words about this Catalog

Since some information may have been updated since the time of printing (July 2011), please check with your Buick dealer for complete details. Buick reserves the right to lengthen or shorten the model year for any product for any reason, or to start and end model years at different times.

New-Vehicle Limited Warranty. This warranty is for GM vehicles registered in the U.S.A. See your Buick dealer for terms and conditions.

A 5-year/100,000-mile (whichever comes first) Transferable Powertrain Limited Warranty plus Roadside Assistance and Courtesy Transportation.

Covered for 4 years/50,000 miles (whichever comes first): The complete vehicle | Cosmetic corrosion resulting from defects | Tires | Repairs made to correct any vehicle defect | Towing to your nearest Buick dealership | No charge for most warranty repairs.

Covered for 6 years/100,000 miles (whichever comes first): Rust-through corrosion

An Important Note About Alterations and Warranties. Installations or alterations to the original equipment vehicle (or chassis) as distributed by General Motors are not covered by the General Motors New-Vehicle Limited Warranty. The special body company, assembler, equipment installer or upfitter is solely responsible for warranties on the body or equipment and any alterations (or any effect of the alterations) to any of the parts, components, systems or assemblies installed by GM. General Motors is not responsible for the safety or quality of design features, materials or workmanship of any alterations by such suppliers.

Assembly. Buick vehicles and their components are assembled or produced by different operating units of General Motors, its subsidiaries or suppliers to GM worldwide. We sometimes find it necessary to produce Buick vehicles with different or differently sourced components than originally scheduled. Since some options may be unavailable when your vehicle is assembled, we suggest that you verify that your vehicle includes the equipment you ordered or, if there are changes, that they are acceptable to you.

Engines. Buick products are equipped with engines produced by GM Powertrain or other suppliers to GM worldwide. The engines in Buick products may also be used in other GM makes and models.

Trailing and Off-Road Driving Information.

Please go to buick.com and carefully review the vehicle Owner's Manual for important safety information about trailering or off-road driving in your vehicle.

A Note About Child Safety. Always use safety belts and the correct restraint for your child's age and size. Even in vehicles equipped with the Passenger Sensing System, children are safer when properly secured in a rear seat in the appropriate infant, child or booster seat. Never place a rear-facing infant restraint in the front seat of any vehicle equipped with a passenger air bag. See the Owner's Manual and child safety seat instructions for more safety information.

Fleet Orders. Some standard content may be deleted with fleet orders. See dealer for details.

Enhance Your Ownership Experience. The Owner Center at My GMLink is an online service that helps you make the most of your vehicle ownership.

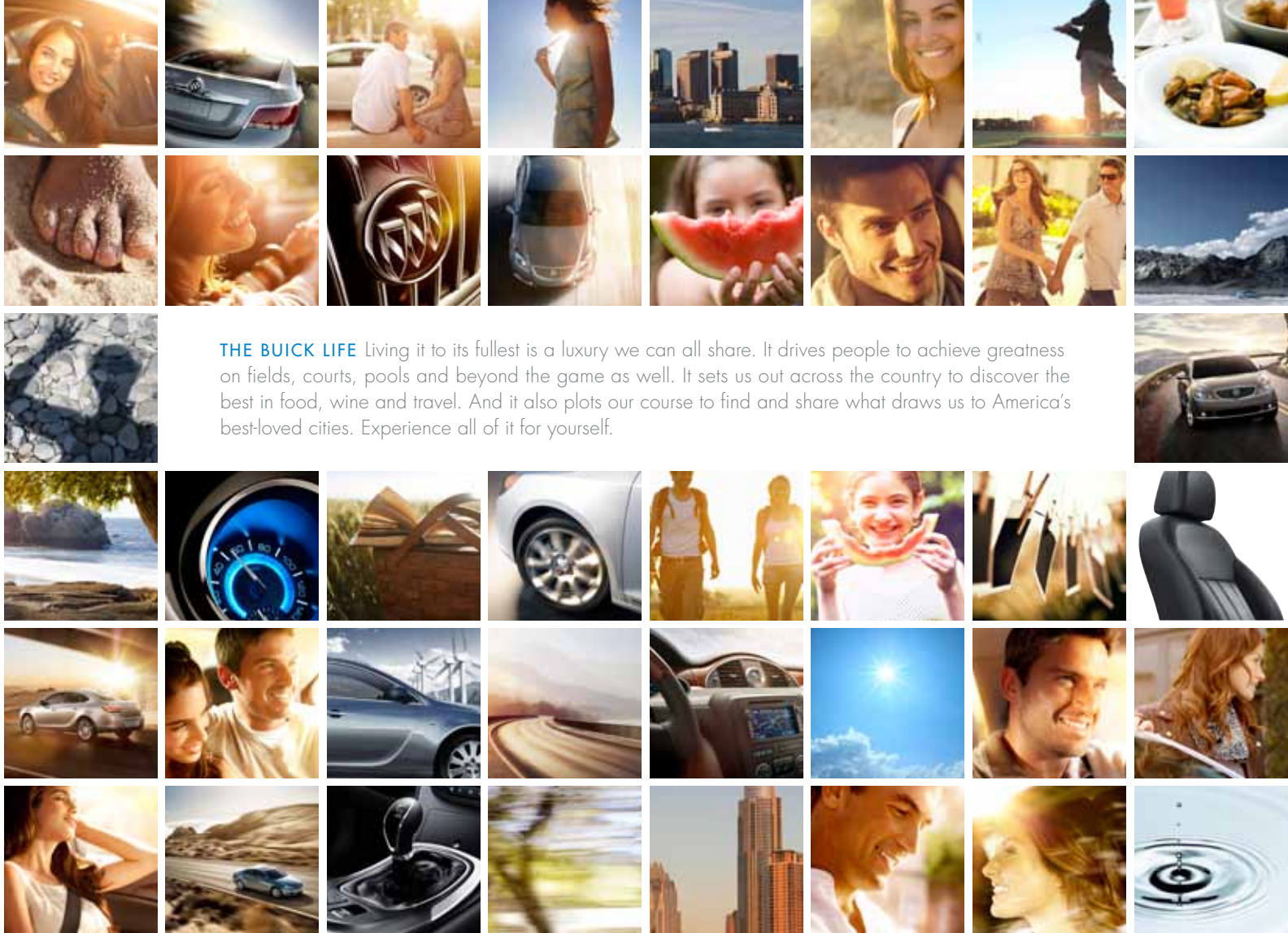
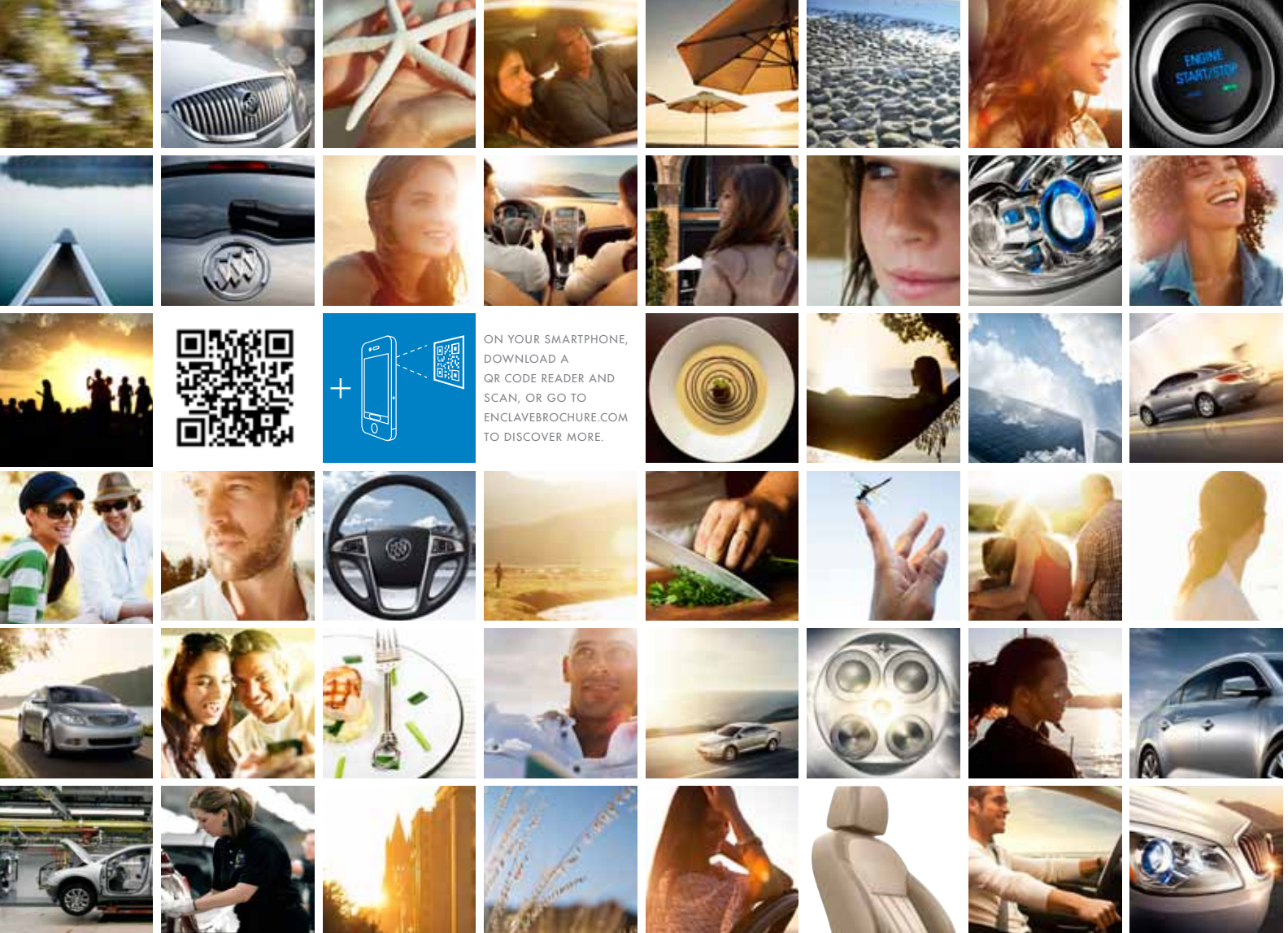
Sign up for e-mail reminders about service visits | Keep an online history of services performed | Read your vehicle Owner's Manual, warranty and more online | Receive the recall notices that apply only to your vehicle | Watch do-it-yourself videos and much more.

Register today at mygmlink.com.

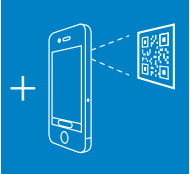
GM, the GM logo, Buick, the Buick emblem, OnStar, the OnStar emblem and the slogans, emblems, vehicle model names, vehicle body designs and other marks appearing in this catalog are the trademarks and/or service marks of General Motors, its subsidiaries, affiliates or licensors. The SiriusXM name and related logos are registered trademarks of SiriusXM Satellite Radio, Inc. Facebook is a registered trademark of Facebook, Inc. iPod is a registered trademark of Apple, Inc. ©2011 General Motors. All rights reserved. Litho in U.S.A., July 2011.

To learn more about why Certified Service is the perfect companion for your Enclave, click on mycertifiedservice.com.





THE BUICK LIFE Living it to its fullest is a luxury we can all share. It drives people to achieve greatness on fields, courts, pools and beyond the game as well. It sets us out across the country to discover the best in food, wine and travel. And it also plots our course to find and share what draws us to America's best-loved cities. Experience all of it for yourself.



ON YOUR SMARTPHONE, DOWNLOAD A QR CODE READER AND SCAN, OR GO TO ENCLAVEBROCHURE.COM TO DISCOVER MORE.



Discover more to like about Buick on Facebook. facebook.com/buick



Provided by:
VALER
PROCESS

