

# YOUR KING COUNTY Residential Recycling Guide

These guidelines are for services by  
Waste Management in King County.

**Please save and post for easy reference.**

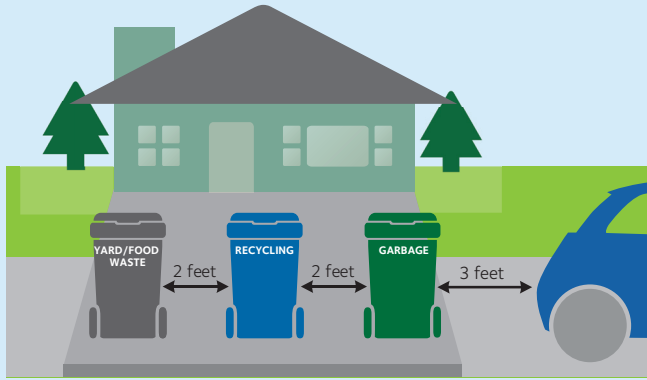
[www.wmnorthwest.com/kingcounty](http://www.wmnorthwest.com/kingcounty)



**King County**



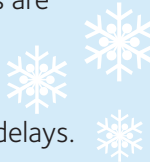
# COLLECTION GUIDELINES



## Weather Delay?

If weather conditions prevent safe collection, up to twice as much material will be collected at no extra charge on your next regular collection day for each container which was not emptied. No credits are issued for collection delays due to weather.

Visit [wmnorthwest.com/weatherboard](http://wmnorthwest.com/weatherboard) for information on weather-related service delays.



## Place containers at curb by 6AM

- Two (2) feet apart with lids opening toward street
- At least three (3) feet from cars, trees and mailboxes, fences and utility boxes
- Please remove containers as soon as possible after collection.

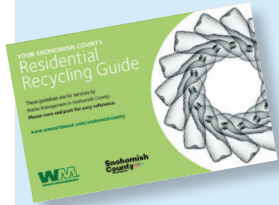
## Waste Management

Monday-Friday 7 a.m. – 5 p.m., Saturday 8 a.m. – 12 p.m.  
Our Customer Service Center is here to help:

- **Missed collection**
- **Missing/damaged containers**
- **Sign up or change collection services**
- **Rates, billing and service information**
- **Bulky item pick-up service**
- **Construction/demolition containers**
- **Disabled service**
- **Información en Español**

# STEPS TO RECYCLING SUCCESS

Recycling is an easy way to keep valuable natural resources out of the landfill, *but recycling only works with your help.*



To keep the recycling system healthy, follow these simple steps:

**1. Is it recyclable??** Check your King County Recycling Guide.

**Yes! It's on the list!**

Proceed to **Step #2**



**Don't see it?**

email [recyclenw@wm.com](mailto:recyclenw@wm.com)

call **1-800-592-9995**

**2. Prepare your recyclables for a new life:**

- Rinse or empty recyclables of all food and liquids
- Separate newspaper from plastic delivery bag  
*Reuse bags, discard in the garbage or bring back to a grocery store for recycling*
- Remove plastic wrap and any packaging foam from cardboard  
*Place plastic wrap and foam packaging in garbage. Visit the Community Recycling Resources pages for foam reuse and recycling options*
- Flatten boxes

**3. Do not put bagged recyclables into cart** — empty out recyclables into cart loose  
*Empty paper bags okay in recycling cart; empty plastic bags go in the garbage or back to a grocery store for recycling*

***Thank you for doing your part to recycle right!***



# WHY CAN'T I RECYCLE EVERYTHING?

Recycling starts when you put the **right** stuff in your recycling cart.

Just because you put something in a recycling bin, it does not mean it can be turned into something new. When the wrong stuff goes in the bin, staff at the recycling center have to remove these items by hand, and throw them in the garbage.

When in doubt,  
check out your  
Recycling Guide!



For a recyclable item to be made into a new product,  
*all of these things must be true:*

- ✓ **Preparation:** Each recyclable item must be clean and empty of all debris, food or liquids.
- ✓ **Separation:** A recycling facility must be able to separate the item into its own material group so each type of item — cardboard, aluminum, tin, steel, paper, glass, plastic containers — can be properly distributed to the correct manufacturers.
- ✓ **Markets:** A manufacturer must be willing to buy this material.
- ✓ **Manufacturing:** A manufacturer must be able to make a new product out of the recycled item.

# RECYCLING MYTH BUSTERS

**MYTH: All plastics can be recycled.**

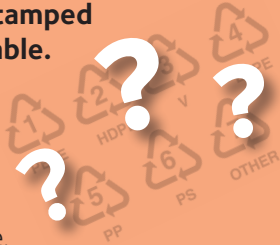
**FACT:** Not all plastics can be successfully recycled. At this time only some plastics can be made into new things. **Recycle plastics by shape - bottles, jugs, dairy tubs and cups.**



**MYTH: A recycling symbol stamped on plastic means it is recyclable.**

**FACT:**

- There are **thousands** of plastic products and packaging, and each one has its own unique chemical recipe.
- The number only tells us what the primary ingredient is in the plastic recipe. Many plastics cannot be made into new products at this time.



**MYTH: It doesn't matter if something belongs in the recycling — the recycling center will sort everything anyway.**

**FACT:** False.

- There is a lot of garbage sent to the recycling center, and each non-recyclable item is removed by hand by trained staff.
- Garbage placed in the recycling increases the cost of the recycling process and will increase the cost of garbage and recycling service.

**Garbage and Other Things We Find in the Recycling**

- loose plastic bags
- hoses
- light bulbs
- needles
- toys
- hangers
- straws
- snack wrappers
- cleaning wipes
- food-soiled containers and paper
- non-recyclable plastic

**We're here to help!**

When in doubt, check your Recycling Guide, call the Waste Management Customer Service Center or email recycling experts at [recyclenw@wm.com](mailto:recyclenw@wm.com).

# Waste Prevention is Even Better Than Recycling

- Buy locally produced items to reduce the amount of natural resources needed for shipping, packaging and transportation.
- Choose reusable items such as water bottles, cloth cleaning rags, shopping bags and rechargeable batteries.
- Use durable dishes, cutlery and napkins, instead of disposable paper or plastic.
- Carry your own travel mug, water bottle and cloth napkin.
- Reuse containers for storage.

- Buy bulk foods and other supplies to use less packaging.
- Shop at, and donate items to secondhand stores.
- Repair furniture and tools, rather than replacing.
- Rent, borrow or share infrequently used items such as trailers, power tools, ladders and lawn equipment.



See [www.wm.com/thinkgreen](http://www.wm.com/thinkgreen) for more ideas.

# RECYCLING

Empty and clean all recyclables. Please do not place in bags - empty loose out of bags and boxes into your blue recycling cart.

## Clean paper

Newspaper, inserts

Mail, envelopes

Cereal and dry food boxes

*Remove liners*

Paperback books

Magazines, catalogs, phone books

Non-foil wrapping paper

Frozen food boxes

Paper cups

Juice boxes, milk, soy milk and broth containers

Ice cream cartons



## Plastic bottles, jugs, tubs and cups

Milk, juice and soda bottles

Yogurt, dairy and margarine tubs  
*No lids*

Shampoo and conditioner bottles

Window, bathroom and kitchen cleaner bottles

Detergent and fabric softener bottles

Pill bottles  
*No prescription vials*

**NEW!** Plastic plant pots and 5-gallon buckets  
*No soil*



Ignore the numbers, recycle plastics by shape!



## Cardboard

Flatten all boxes  
*Do not tie up*



## Glass jars and bottles

Empty of all food or liquid  
*Labels OK*



## Aluminum and tin cans

Beverage cans  
Metal food cans  
*Labels OK*  
*Lids in can, crimp shut*  
Empty aerosol cans



Aerosol cans that are not empty should be taken to a hazardous waste drop-off site. Visit [lhwp.org](http://lhwp.org) or call 206-296-4692 for details.

## Scrap metal and clean foil

Small non-working metal appliances, pots, tools  
*Limit 2 ft. x 2 ft. x 2 ft., 35 lbs.*  
*No sharp or greasy metal*  
*Ball clean foil together*



## Recycling Tips

- Empty and rinse out all food residue. Labels do not need to be removed.
- Empty recyclables out of bags and boxes into the cart so they can be easily sorted at the recycling center.
- **Extra recyclables?** At no extra charge, place extra recyclables in a bin or cardboard box at the curb next to your recycling cart.



NO  
PLASTIC

# COMPOST | FOOD SCRAPS AND YARD DEBRIS

These items go in your compost cart

**No plastic, glass, metal, liquids,  
cooking oil or pet waste**

## Plants, flowers and yard debris

Houseplants

*No pots*

Grass clippings, weeds

*Remove plastic twine, gardening  
tape or twist ties*

Twigs, branches, roots  
from pruning

Leaves, tree branches

*Under 4 feet long,  
4 inches in diameter*

Holiday trees

*Cut trees into 4 foot sections*

Jack-o-lanterns

*Remove candles*



Sign up for compost service by phone or online at  
[wmnorthwest.com/kingcounty](http://wmnorthwest.com/kingcounty) • 1-800-592-9995  
Monday-Friday 7 a.m. – 5 p.m., Saturday 8 a.m. – 12 p.m.

## Food scraps and leftovers

Fruit and vegetable scraps

Leftovers

Bread, pasta, grains  
and beans

Eggshells, nutshells

Coffee filters and grounds

Tea bags and tea leaves

Meat, fish, poultry, bones

Dairy products such as  
yogurt and cheese



# Uncoated paper

- Greasy paper or pizza boxes
- Food-soiled paper towels
- Napkins
- Shredded paper
- Soiled paper containers



- Uncoated *non-shiny* paper plates
- Waxed paper, waxed cardboard
- Paper bags
- Approved compostable packaging  
See [cedar-grove.com/docs/cg\\_food\\_compostables.pdf](http://cedar-grove.com/docs/cg_food_compostables.pdf)



## Be a Foodcycler! It's easy to do!

1



A stylish compost pail.

2



A reusable kitchen container, such as an old pitcher.

3



A paper bag or an approved compostable bag.



Empty collected food scraps into your compost cart. Your compost cart will be picked up on your next collection day. Visit [wmnorthwest.com/kingcounty](http://wmnorthwest.com/kingcounty) for a list of approved compostable bags to use in your kitchen compost pail.

**Extra Yard Waste:** There is a charge for extra yard waste. Put extra yard waste in Kraft paper bags or 32-gallon containers with handles and lids (*65 lb. limit.*); label "yard." Use Kraft bags to store extra yard debris only. Food scraps and uncoated paper must be placed in the compost cart.

### Did you know?

Food scraps and yard debris are processed into compost, sold locally at home and garden stores and used by local farms.



# GARBAGE

Bag all garbage and put in your garbage cart.

## Non-recyclable plastic

Foam take-out containers

Foam packing peanuts

Caps and small lids

Empty motor oil and antifreeze containers

Plastic plates and utensils

Empty prescription vials

Garden hoses

Disposable diapers

Hangers

Straws

Shiny snack wrappers, condiment packets

Bows and ribbons

Ziptop bags



## Non-recyclable glass

Mirrors, window glass

Ceramics, dishes

Incandescent and halogen light bulbs only

*Fluorescent light bulbs and tubes need special disposal - see Hazardous Waste page*



## Non-recyclable paper

Disposable wipes

Hardcover books

**TIP:** Remove pages from the cover and recycle the paper

Foil wrapping paper

Dirty paper and plates

Facial tissue

Shredded paper

**TIP:** Can be placed loose in compost cart



## Other garbage

Cold ashes

Vacuum bags and dust

Broken office supplies

Pet waste, cat litter

Clothing, cleaning wipes

Toys

Blister packaging



**Bag plastic bags and bring them back to the grocery store.**



## Non-recyclable metal

Caps, lids

*Less than 3 inches in diameter*

Empty oil containers

Empty latex paint\* cans

*Remove lids; dried, hardened paint okay*

Sharp or greasy metal

Clothes hangers

Small non-working plastic appliances

*Microwaves, coffee makers, etc.*



**\*Latex paint** is no longer considered hazardous waste. It can be placed in your garbage if it is solidified first. Mix in cat litter, shredded paper, sawdust or paint hardener. Once paint no longer flows, leave the lid off the can, bag it and place it in your garbage container.

## Garbage Guidelines

### Please:

- Bag all garbage.
- Double bag pet waste, pet litter, packing peanuts, vacuum dust, sawdust and cold ashes.

## EXTRA GARBAGE

Garbage charges are based on cart size. There is a charge for extra garbage that doesn't fit in your cart with the lid closed. If your garbage cart lid is open more than 6 inches, there will be a charge for extra garbage.

Bulky items such as mattresses, large appliances and building materials can be picked up by special arrangement for a fee.



# HAZARDOUS WASTE

## Free Hazardous Waste Disposal

Household Hazardous Waste are accepted at four fixed collection sites in Seattle and King County.

The Wastemobile travels to many communities in King County to provide residents with a place to take their household hazardous waste on a periodic basis.

### Accepted items:

- Aerosol Cans (*if not empty*)
- Antifreeze
- Automobile Products (*antifreeze, brake fluid, gasoline, oil filters; do not mix motor oil with other oil or automotive fluids*)
- Automobile Batteries (*Limit 5 car batteries*)
- Furniture Stain
- Gasoline (*30 gallon gasoline limit*)
- Glue, Instant Glue, Rubber Cement
- Household Cleaners
- Hobby Chemicals

## TVs & Computers

TVs, monitors, computers, laptops and e-readers are banned from disposal and can be recycled for free. Visit

[ecyclewashington.org](http://ecyclewashington.org) or call 1-800-RECYCLE for more recycling locations and details.



## Electronics

Electronic equipment such as printers, cell phones, stereos, CD/DVD/VCR players and household electronics should be properly recycled. Visit [takeitbacknetwork.org](http://takeitbacknetwork.org) or call 206.296.4466 for more recycling locations and details.



## Medication

Return unwanted or expired medication to keep your home and environment safer.



## Fluorescent Tubes & Bulbs

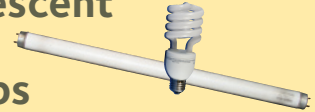
Compact fluorescent lights and tubes can be recycled at a variety of locations.

Visit [thinkgreenfromhome.com](http://thinkgreenfromhome.com) (1-800-592-9995), [takeitbacknetwork.org](http://takeitbacknetwork.org) (206-296-4466) or [pse.com/cfrecycle](http://pse.com/cfrecycle) for locations and details.

Also accepted at the Auburn SuperMall Wastemobile (*limit 10*).

## Batteries & Cell Phones

Recycle rechargeable batteries and cell phones at a variety of electronic, office supply and building supply stores.



- Lawn, Garden, or House Plant Insect Killer
- Mercury-Containing Thermometers,
- Thermostats, Fluorescent Lights (*up to 10 tubes and bulbs*)
- Motor Oil
- Oil-Based Paint
- Pesticides
- Propane Tanks
- Roadside Flares
- Spray Paint
- Swimming Pool & Spa Supplies
- Thinners & Other Solvents

**Not accepted:** latex paint, empty containers, TVs, computers, tires, electronics, explosives, medicine and garbage.

**More information and quantity restrictions:**

[lhwmp.org](http://lhwmp.org) • 206-296-4692  
[hazwastehelp.org](http://hazwastehelp.org)

Visit [takebackyourmeds.org](http://takebackyourmeds.org) for locations and details on the types of medication accepted.

## Needles & Sharps

Used needles and sharps are dangerous in the garbage because they can injure sorters and spread disease.



Free drop-off programs are listed online: [kingcounty.gov/whatdoidowith](http://kingcounty.gov/whatdoidowith). Mail in programs are also available: [thinkgreenfromhome.com/SyringesAndLancets.cfm](http://thinkgreenfromhome.com/SyringesAndLancets.cfm)

## For your safety and that of others:

- Do not mix products
- Keep products in original containers
- Label products not in original containers
- Secure products so they won't leak

Visit [kingcounty.gov/whatdoidowith](http://kingcounty.gov/whatdoidowith), [thinkgreenfromhome.com](http://thinkgreenfromhome.com) (1-800-592-9995) or [call2recycle.org](http://call2recycle.org)

(1-877-723-1297) for locations and details.

## Used Motor Oil

**Auto Parts Stores:** Most auto part stores will accept used motor oil for recycling. Call ahead for quantities and restrictions.



# Caution. Warning. Danger. Poison.

Many items with these words on the label are considered hazardous. These items cannot be placed in the garbage, recycling, yard waste or poured down the drain. Empty containers can be placed in garbage. Please properly dispose of unwanted household hazardous waste.

# COMMUNITY RECYCLING OPTIONS

Many items are recyclable, but don't belong in the curbside recycling cart. Here are some recycling options for a variety of materials. Please contact businesses for current rates, hours and restrictions.

## Plastic Bags

Clean plastic bags, dry cleaning bags and other types of film plastic can be recycled at most grocery stores. Visit [plasticbagrecycling.org](http://plasticbagrecycling.org) for locations and information.



## Used Cooking Oil

Used cooking oil can be recycled into biodiesel. Pour cold oil into containers with tight-fitting lids, and drop-off at cooking oil collection stations.



### ■ General Biodiesel

6333 1st Ave. S,  
Seattle, WA, 98108

206-932-1600

## Clothing & Household Goods

Second hand stores and clothing banks will accept clothing and household goods in reusable condition.



## Online Materials Exchange

Reusable household items can be sold or given away. Try posting a free ad. You will be amazed at what other people might want.

- The Freecycle Network: [freecycle.org](http://freecycle.org)
- Craigslist: [seattle.craigslist.org](http://seattle.craigslist.org)
- 2Good2Toss: [2good2toss.com](http://2good2toss.com)
- Industrial Materials Exchange: [lhwmp.org](http://lhwmp.org)



For additional drop-off locations visit  
[www.generalbiodiesel.com/](http://www.generalbiodiesel.com/)



## Foam Blocks and Packing Materials



Most mailing stores (such as UPS stores) accept clean packing peanuts for reuse.

## Other Items

### COMPREHENSIVE LOCAL RECYCLING DATABASES

#### ■ “What Do I Do With...?” Recycling Database

206-296-4466

[kingcounty.gov/whatdoidowith](http://kingcounty.gov/whatdoidowith)

#### ■ Washington State Recycling Database

1-800-RECYCLE (732-9253)

[1800recycle.wa.gov](http://1800recycle.wa.gov)

## MORE COMMUNITY RESOURCES

### Looking for Reusable Products?

The South Seattle Household Hazardous Waste facility and Wastemobile will provide free products to the public. Household products are made available that other King County residents have turned in, including: oil-based paint, stain and primer oil-based paint, stain and primer; wood care products; cleaning products (e.g., bleach, toilet cleaner); automotive products (e.g., oil, antifreeze, car wax). Residents will need to fill out and sign a release form prior to receiving any materials. For more information: [Hazwastehelp.org](http://Hazwastehelp.org)

# COMMUNITY RECYCLING OPTIONS

## Bulky Materials

Bulky item collection service is available through Waste Management for a fee. Please call **1-800-592-9995** for rates for specific items and to schedule a pick-up.

### Appliances

■ [your.kingcounty.gov/  
solidwaste/wdidw/](http://your.kingcounty.gov/solidwaste/wdidw/)

■ **Pochels Appliance Center**

33029 Pacific Hwy S  
Federal Way  
253-517-3162

■ **A Plus Recycling**

116 Clay St NW #B1  
Auburn  
253-737-4441

■ **Jaco Environmental**

Pick up only  
800-414-5072

[jacoinc.net](http://jacoinc.net)



In general, King County does not accept major appliances for disposal because they can be recycled or reused.

Some appliances, such as refrigerators, freezers and air conditioners, also contain chlorofluorocarbons (CFCs), which are regulated under the federal Clean Air Act. These items cannot be disposed and should be recycled. Recycling these appliances helps ensure that CFCs and other refrigerants are safely removed for recycling or disposal and are not released into the atmosphere.

## Porcelain, Concrete & Brick

Concrete, brick and asphalt can be recycled for a fee. Call ahead for fees and restrictions.

### ■ A Plus Recycling

(porcelain only)

116 Clay St NW #B1

Auburn

253-737-4441

[aplusremovalandrecycling.com](http://aplusremovalandrecycling.com)

### ■ Lloyd Enterprises (no porcelain)

80 5th Ave

Milton

253-874-6692

[lloydenterprisesinc.com](http://lloydenterprisesinc.com)

### ■ Renton Concrete Recyclers

500 Monster Rd SW

Renton

206-772-2278

[rentonconcreterecyclers.com](http://rentonconcreterecyclers.com)

### ■ Stoneway Concrete

510 Monster Rd SW

Renton

425-226-1000

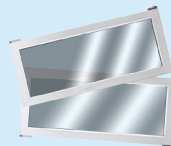
## Window Glass

### ■ CDL Recycle

7201 Marginal Way S

Seattle

206-763-2002



Check out King County's  
Eco-Cool Remodel Tool at  
[ecocoolremodel.com](http://ecocoolremodel.com).

## Scrap Metal

### ■ Schnitzer Steel

1902 Marine View Dr

Tacoma

253-572-4000

[schnitzersteel.com](http://schnitzersteel.com)

### ■ Valley Recycling / Rusty Rack Guys

312 W Valley Hwy S

Pacific

253-833-5431

[rustyrackguys.com](http://rustyrackguys.com)





720 4th Ave., Suite 400  
Kirkland, WA 98033

1-800-592-9995  
Monday-Friday 7 a.m. – 5 p.m.  
Saturday 8 a.m. – 12 p.m.  
Información en Español  
[wmnorthwest.com/kingcounty](http://wmnorthwest.com/kingcounty)  
Online Billing: [www.wm.com/pay-my-bill](http://www.wm.com/pay-my-bill)