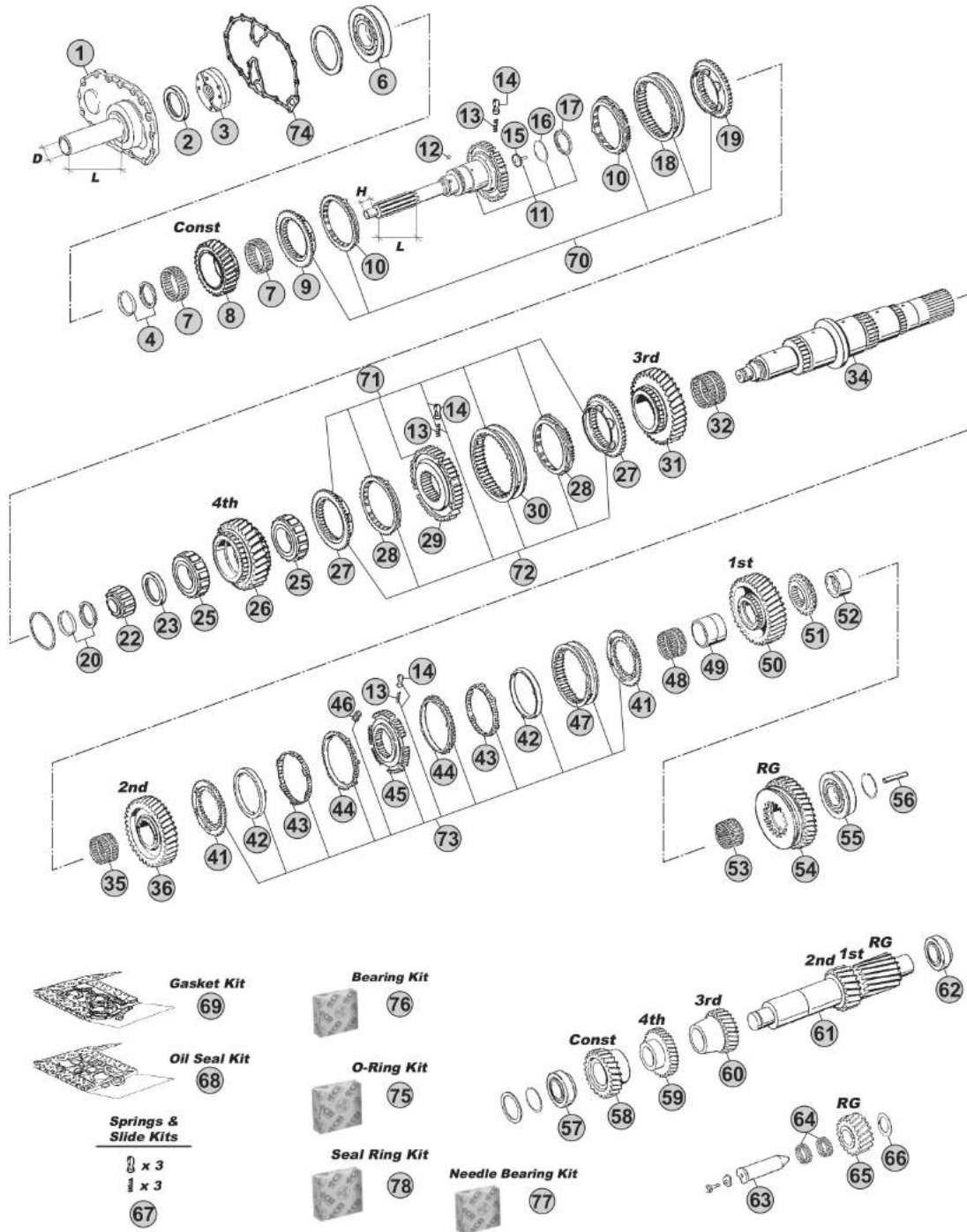


**MODELS:**

- ECOSPLIT I-II

**VERSIONS:**

- 16S220 (1312 xxx xxx)



**Notes**

- (A) R. 10,14-0,72
- (B) R. 13,80-0,84
- (C) R. 16,47-1,00

Our spare parts are not the originals but interchangeable with the originals ones. All original equipment manufacturers' numbers, pictures and models used in this catalogue are for reference only. Our products bear our trade-mark.

Fig.	CEI no.	ZF no.	Description	Q.ty	Notes	16S220				
1	128.353	1312 302 047	Front Cover	1	L=170 - D=60	●				
1	128.354	1312 302 044	Front Cover	1	L=190 - D=62,611	●				
1	128.346	1312 302 036	Front Cover	1		●				
1	128.347	1312 302 096	Front Cover	1		●				
2	139.879	0734 310 387	Oil Seal 55x75x8	1		●				
3	280.348	1295 202 041	Oil Pump	1		●				
4	298.408	1499 298 136	Shims Kit Th. 4,35mm	1		●				
4	298.409	1499 298 135	Shims Kit Th. 4,30mm	1		●				
4	298.410	1499 298 134	Shims Kit Th. 4,25mm	1		●				
4	298.411	1499 298 133	Shims Kit Th. 4,20mm	1		●				
4	298.412	1499 298 132	Shims Kit Th. 4,15mm	1		●				
4	298.413	1499 298 131	Shims Kit Th. 4,10mm	1		●				
4	298.419	1499 298 130	Shims Kit Th. 4,05mm	1		●				
4	298.420	1499 298 129	Shims Kit Th.4,00 mm	1		●				
4	298.421	1499 298 128	Shims Kit Th.3,95 mm	1		●				
4	298.422	1499 298 127	Shims Kit Th.3,90 mm	1		●				
4	298.423	1499 298 126	Shims Kit Th.3,85 mm	1		●				
4	298.424	1499 298 125	Shims Kit Th.3,80 mm	1		●				
6	130.306	0750 117 431	Bearing 75x150x30,50	1		●				
7	137.134	0735 320 950	Needle Cage 93x101x32,50	2		●				
8	244.353	1312 302 077	Constant Gear 28 T	1	A	●				
8	145.491	1312 302 073	Constant Gear 34 T	1	B	●				
8	145.490	1312 302 074	Constant Gear 30 T	1	C	●				
9	109.134	1312 304 027	Synchronizer Cone	1		●				
10	119.119	1297 304 402	Synchronizer Ring	2	Old Type	●				
10	119.167	1297 304 484	Synchronizer Ring	2	New Type	●				
11	102.244	1312 202 037	Input Shaft 57 T	1	L=125 H=32	●				
11	102.238	1312 202 038	Input Shaft	1	L=125 H=32	●				
11	102.243	1312 202 039	Input Shaft	1	L=115 H=32	●				
11	102.568	1312 202 036	Input Shaft	1		●				
11		1312 221 003	Input Shaft	1	NMV130 (Clutch PTO)	●				
12	171.084	0635 470 012	Needle D.7x7	1		●				
13	156.140	0732 040 409	Spring De.6,5x23,50	3	3x3 pcs.	●				
14	160.189	1297 304 436	Pressure Piece	3	3x3 pcs.	●				
15	189.630	1315 302 196	Tube	1		●				
16	189.631	0630 502 027	Ring	1		●				
17	189.632	0501 314 060	Diaphragm	1		●				
18	154.135	1310 304 202	Sliding Sleeve	1		●				
19	109.133	1312 304 056	Synchronizer Cone	1		●				
20	298.392	1499 298 027	Shims Kit Th=5,00mm	1		●				
20	298.393	1499 298 026	Shims Kit Th=4,90mm	1		●				
20	298.394	1499 298 025	Shims Kit Th=4,80mm	1		●				
20	298.395	1499 298 024	Shims Kit Th=4,70mm	1		●				

 ECOSPLIT I-II  
16S220

Date

09/2014

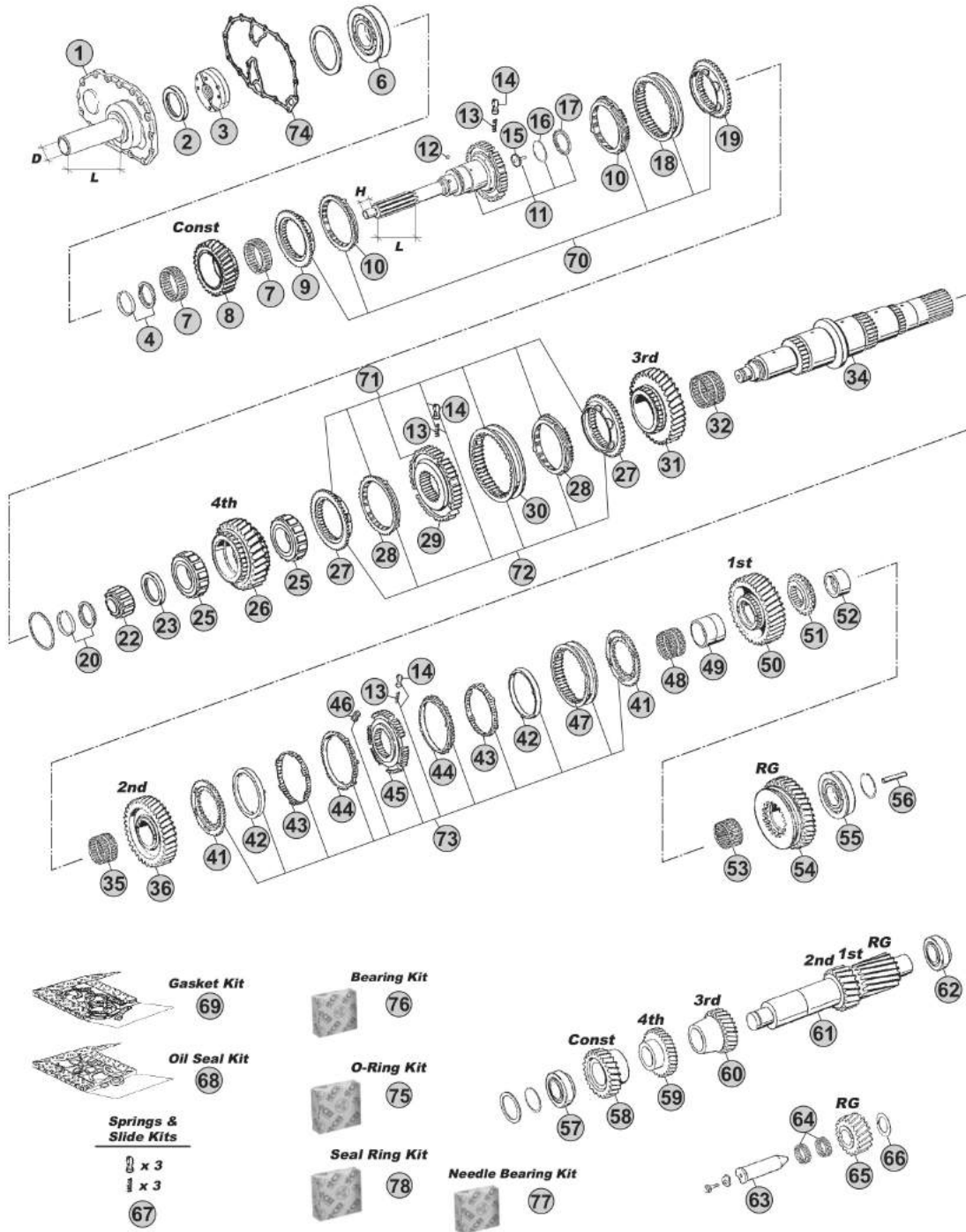
Notes

**MODELS:**

- ECOSPLIT I-II

**VERSIONS:**

- 16S220 (1312 xxx xxx)



Our spare parts are not the originals but interchangeable with the originals ones. All original equipment manufacturers' numbers, pictures and models used in this catalogue are for reference only. Our products bear our trade-mark.

**Notes**

- (A) R. 10,14-0,72
- (B) R. 13,80-0,84
- (C) R. 16,47-1,00

Our spare parts are not the originals but interchangeable with the originals ones. All original equipment manufacturers' numbers, pictures and models used in this catalogue are for reference only. Our products bear our trade-mark.

Fig.	CEI no.	ZF no.	Description	Q.ty	Notes	16S220				
20	298.396	1499 298 023	Shims Kit Th=4,60mm	1		●				
22	137.150	0750 117 232	Roller Bearing 42x40,30	1		●				
23	111.445	1315 304 051	Ring	1	S.8,30 mm	●				
25	130.825	0750 118 258	Roller Cage 67x101x38	2		●				
26	244.349	1312 304 029	Gear 4th Speed 30 T	1	(13) A	●				
26	146.425	1312 304 032	Gear 4th Speed 30 T	1	B	●				
26	146.317	1312 304 031	Gear 4th Speed 34 T	1	C	●				
27	109.134	1312 304 027	Synchronizer Cone	2	(20)	●				
27	109.385	1316 304 159	Synchronizer Cone	2	(21)	●				
27	109.839	1316 304 190	Synchronizer Cone	2	(22)	●				
27	109.208	1356 304 025	Synchronizer Cone	2	(23)	●				
28	119.119	1297 304 402	Synchronizer Ring	2	(20) Old Type	●				
28	119.167	1297 304 484	Synchronizer Ring	2	(20) New Type	●				
28	119.217	1316 304 168	Synchronizer Ring	2	(21)	●				
28	119.308	1316 304 189	Synchronizer Ring	2	(22)	●				
28	119.327	1316 304 196	Synchronizer Ring	2	(23)	●				
29	157.180	1312 304 052	Synchronizer Hub	1	(20)	●				
29	157.227	1316 304 162	Synchronizer Hub	1	(21)	●				
29	155.291	1356 304 019	Synchronizer Hub	1	(22-23)	●				
30	154.135	1310 304 202	Sliding Sleeve	1	(20)	●				
30	154.357	1316 304 167	Sliding Sleeve	1	(21)	●				
30	154.482	1356 304 023	Sliding Sleeve	1	(22-23)	●				
31	244.348	1312 304 075	Gear 3rd Speed 25 T	1	(13) A	●				
31	145.498	1312 304 137	Gear 3rd Speed 32 T	1	B	●				
31	145.497	1312 304 136	Gear 3rd Speed 34 T	1	C	●				
32	137.300	0735 321 451	Needle Cage 58x66x33	1	A	●				
32	137.138	0750 115 303	Needle Cage 92x100x63	1	BC	●				
34	103.323	1312 304 161	Main Shaft	1	A	●				
34	103.128	1316 304 130	Main Shaft 24 T	1	BC	●				
35	137.138	0750 115 303	Needle Cage 92x100x63	1		●				
36	244.352	1312 304 142	Gear 2nd Speed	1	A	●				
36	145.504	1312 304 141	Gear 2nd Speed 37 T	1	B	●				
36	145.503	1312 304 139	Gear 2nd Speed 38 T	1	C	●				
41	109.226	1312 304 092	Synchronizer Cone	2	A	●				
41	109.176	1312 304 106	Synchronizer Cone	2	BC	●				
42	119.152	1268 304 424	Intermediate Synchro Ring	2		●				
43	119.153	1268 304 494	Intermediate Synchro Ring	2		●				
44	119.144	1268 304 525	Synchronizer Ring	2		●				
45	157.181	1312 304 158	Synchronizer Hub	1		●				
46	156.176	1312 304 159	Slide	3		●				
47	154.190	1310 304 175	Sliding Sleeve	1		●				
48	137.413	0750 115 304	Needle Cage D.92x100x72	1	A	●				
48	137.151	0750 115 327	Needle Cage 96x104x72	1	BC	●				

**Date**

09/2014

**Notes**

(13) 16S220 special version - ratio 10,14 - 0,72. For this version to use: 4th speed - synchro cone 1312 304 027 / 3rd speed - synchro cone 1312 304 080

(20) Only for 3rd/4th Speed - First version - Do not mix

(21) Only for 3rd/4th Speed - Second version - Do not mix

(22) Only for 3rd/4th Speed - Latest type - Do not mix

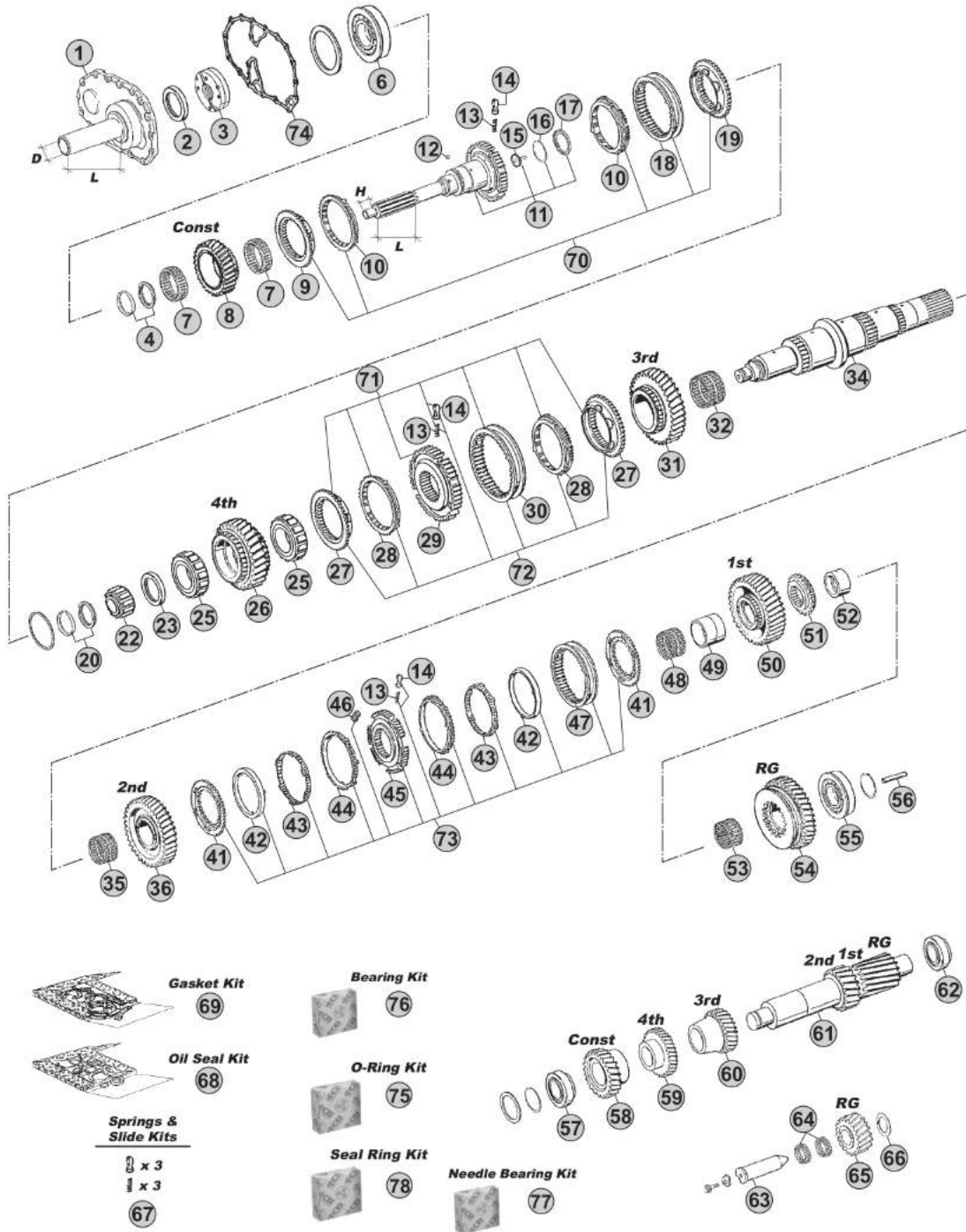
(23) Only for 3rd/4th Speed - Latest type - Do not mix - Carbon version

**MODELS:**

- ECOSPLIT I-II

**VERSIONS:**

- 16S220 (1312 xxx xxx)



**Notes**

- (A) R. 10,14-0,72
- (B) R. 13,80-0,84
- (C) R. 16,47-1,00

Our spare parts are not the originals but interchangeable with the originals ones. All original equipment manufacturers' numbers, pictures and models used in this catalogue are for reference only. Our products bear our trade-mark.

Fig.	CEI no.	ZF no.	Description	Q.ty	Notes	16S220				
49	117.516	1312 304 008	Bush	1	A	●				
49	<b>117.310</b>	1312 304 084	Bush 85x96x72	1	BC	●				
50	244.350	1312 304 077	Gear 1st Speed 34 T	1	A	●				
50	<b>145.509</b>	1312 304 086	Gear 1st Speed 44 T	1	B	●				
50	<b>145.510</b>	1312 304 085	Gear 1st Speed 47 T	1	C	●				
51	109.227	1312 304 037	Engaging Ring	1	A	●				
51	109.181	1312 304 083	Synchronizer cone	1	BC	●				
52	117.517	1312 304 011	Bush	1	A	●				
52	<b>117.311</b>	1316 304 133	Bush 80x90x50	1	BC	●				
53	137.412	0735 321 103	Roller Cage D.77x85x50	1	A	●				
53	<b>137.140</b>	0750 115 326	Roller Cage 90x98x50	1	BC	●				
54	244.351	1312 304 078	Reverse Gear 39 T	1	A	●				
54	<b>147.141</b>	1312 304 088	Reverse Gear 39 T	1	B	●				
54	<b>147.139</b>	1312 304 087	Reverse Gear 38 T	1	C	●				
55	130.454	0750 117 233	Bearing D.65x140x36,5	1	A	●				
55	<b>130.304</b>	0750 117 678	Bearing 80x140x36,50	1	BC	●				
56	<b>188.209</b>	1312 304 150	Oil Tube	1		●				
57	<b>130.308</b>	0750 117 009	Bearing 49,2x103,1x43,6	1		●				
58	146.868	1312 303 003	Constant Gear 34 T	1	A	●				
58	<b>146.411</b>	1312 303 006	Constant Gear 37 T	1	B	●				
58	<b>146.412</b>	1312 303 005	Constant Gear 39 T	1	C	●				
59	146.869	1312 303 014	Gear 4th Speed 31 T	1	A	●				
59	<b>146.417</b>	1312 303 017	Gear 4th Speed 39 T	1	B	●				
59	<b>146.418</b>	1312 303 016	Gear 4th Speed 37 T	1	C	●				
60	146.870	1312 303 036	Gear 3rd Speed 36 T	1	A	●				
60	<b>146.423</b>	1312 303 020	Gear 3rd Speed 28 T	1	B	●				
60	<b>146.424</b>	1312 303 021	Gear 3rd Speed 26 T	1	C	●				
61	105.312	1312 303 037	Countershaft 20-24 T	1	A	●				
61	<b>105.107</b>	1312 303 009	Countershaft 19/23 T	1	B	●				
61	105.108	1312 303 008	Countershaft 17/20 T	1	C	●				
61	105.313	1312 303 043	Countershaft	1	(14) B	●				
61	105.314	1312 303 055	Countershaft	1	(15) C	●				
62	<b>130.308</b>	0750 117 009	Bearing 49,2x103,1x43,6	1		●				
63	107.108	1295 305 056	Reverse Gear Pin	1		●				
64	137.154	0750 115 255	Needle Cage 45x53x25	2		●				
65	147.324	1312 305 003	Reverse Gear 21 T	1	A	●				
65	147.135	1297 305 012	Reverse Gear 21 T	1	B	●				
65	147.134	1297 305 011	Reverse Gear 24 T	1	C	●				
66	169.234	0730 150 064	Thrust Washer	1		●				
67	<b>198.843</b>		Spring Slide kit	1		●				
68	<b>298.881</b>	1312 298 902	Oil Seal Kit	1		●				
69	<b>198.427</b>	1295 298 915	Gasket Kit	1		●				
70	<b>298.319</b>	1297 298 955	Synchro Kit	1		●				

Date

09/2014

Notes

(14) Special version "HD"

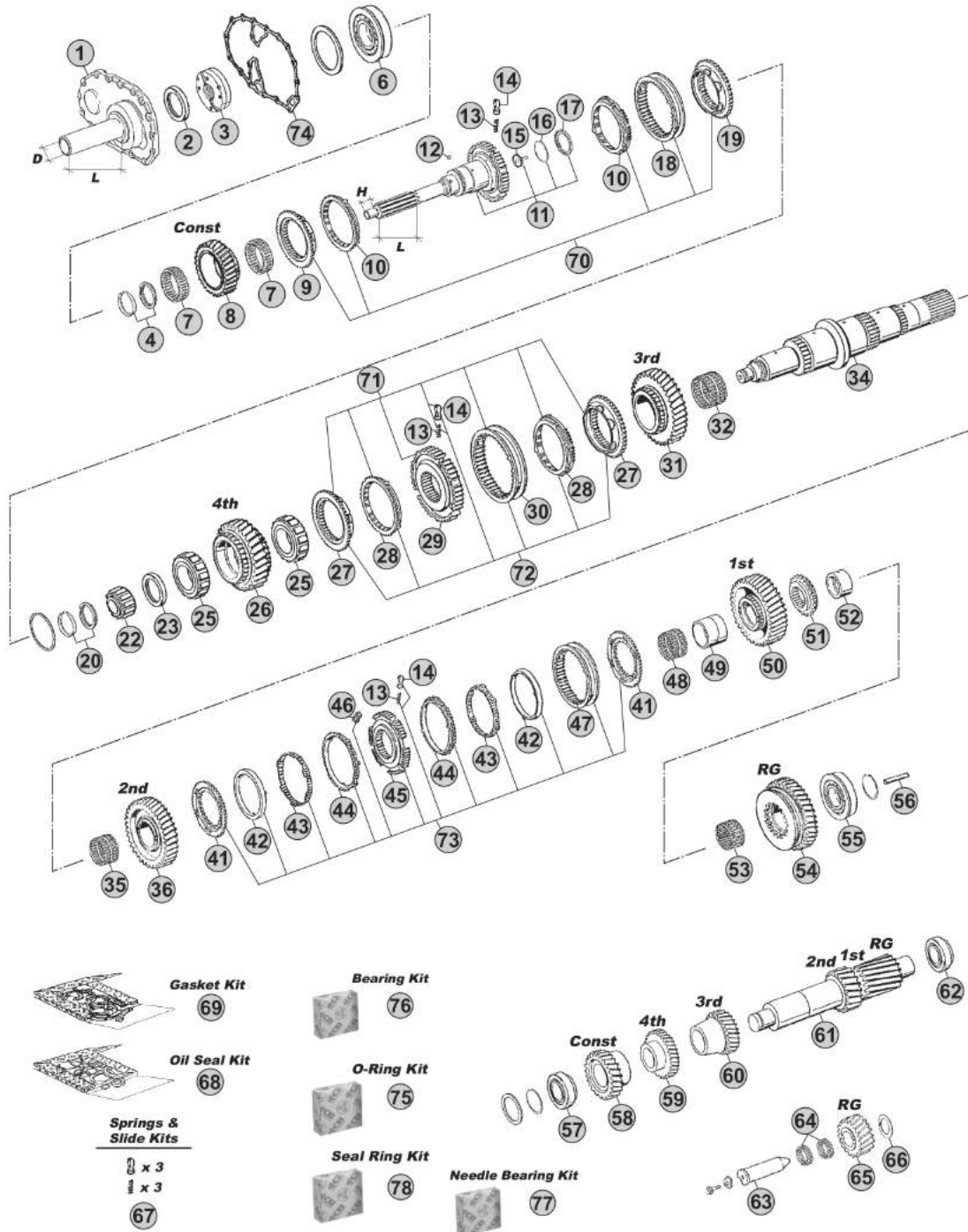
(15) Special version for Kamaz

**MODELS:**

- ECOSPLIT I-II

**VERSIONS:**

- 16S220 (1312 xxx xxx)



**Notes**

- (A) R. 10,14-0,72
- (B) R. 13,80-0,84
- (C) R. 16,47-1,00

16S220

Our spare parts are not the originals but interchangeable with the originals ones. All original equipment manufacturers' numbers, pictures and models used in this catalogue are for reference only. Our products bear our trade-mark.

Fig.	CEI no.	ZF no.	Description	Q.ty		Notes
71	<b>198.812</b>	1315 298 018	Synchro Kit	1	(20)	●
71	<b>298.021</b>	1315 298 061	Synchro Kit	1	(21)	●
72	<b>298.291</b>	1315 298 067	Synchro Kit	1	(21)	●
72	<b>298.288</b>	1325 298 008	Synchro Kit	1	(22)	●
72	<b>196.442</b>	1316 298 037	Synchro Kit	1	(23)	●
73	<b>198.969</b>	1312 298 911	Synchro Kit	1		●
74	<b>139.686</b>	1313 302 014	Gasket	1		●
75	298.405	1295 298 916	O-Ring Kit	1		●
76	298.426	1295 298 943	Bearing kit	1		●
77	298.425	1295 298 947	Needle Cages Kit	1		●
78	298.427	1312 298 901	Seal Ring Kit	1		●

ECOSPLIT I-II  
16S220

Date  
09/2014

Notes

(20) Only for 3rd/4th Speed - First version - Do not mix  
 (21) Only for 3rd/4th Speed - Second version - Do not mix  
 (22) Only for 3rd/4th Speed - Latest type - Do not mix  
 (23) Only for 3rd/4th Speed - Latest type - Do not mix - Carbon version



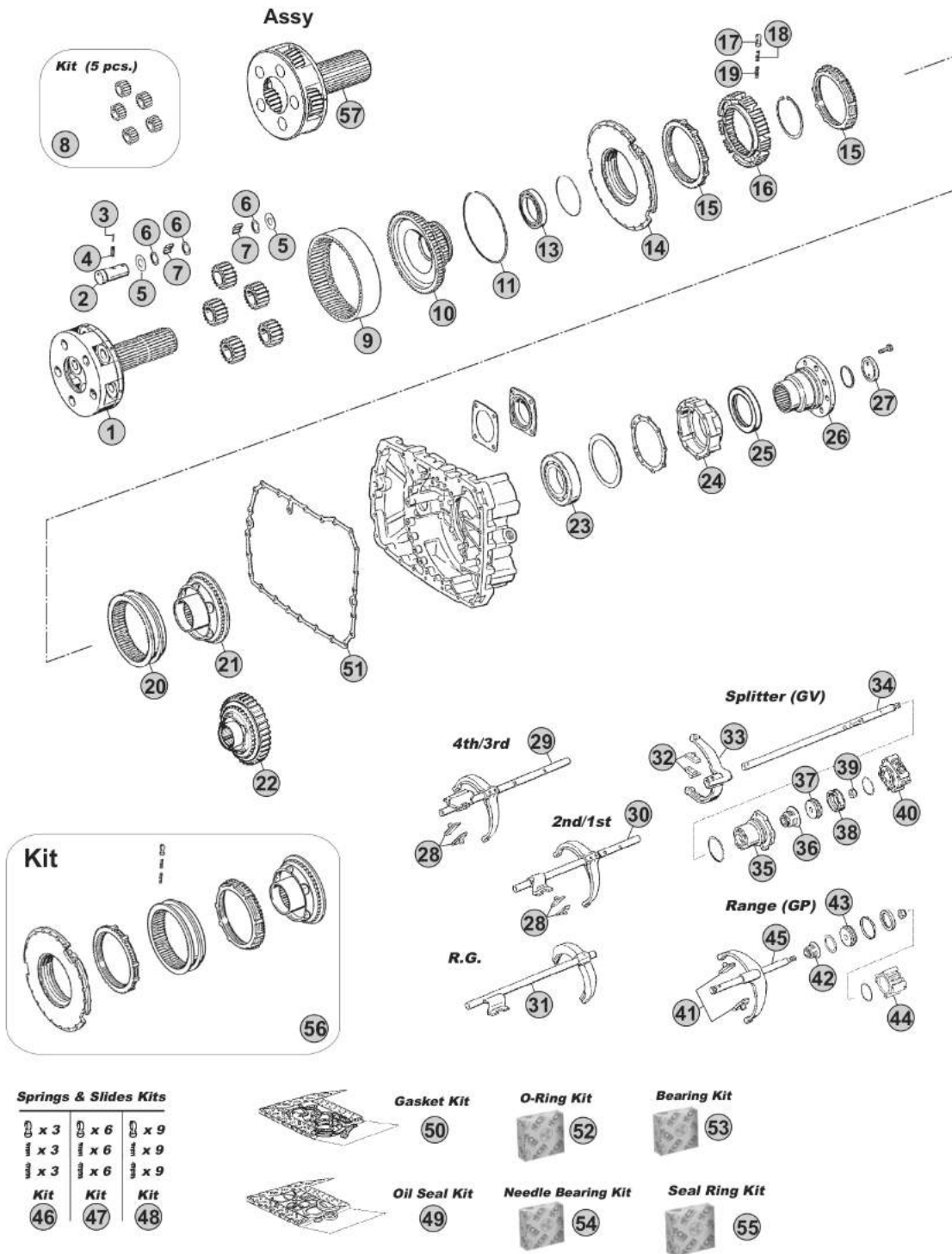


**MODELS:**

- ECOSPLIT I-II

**VERSIONS:**

- 16S220 (1312 xxx xxx)



**Notes**

- (A) R. 10,14-0,72
- (B) R. 13,80-0,84
- (C) R. 16,47-1,00

Our spare parts are not the originals but interchangeable with the originals ones. All original equipment manufacturers' numbers, pictures and models used in this catalogue are for reference only. Our products bear our trade-mark.

Fig.	CEI no.	ZF no.	Description	Q.ty	Notes	16S220				
1	190.575	1312 232 016	Planetary Carrier	1	A	●				
1	190.392	1316 232 006	Planetary Carrier	1	BC	●				
2	107.163	1297 332 109	Planet pin	5	A	●				
2	107.165	1312 332 026	Planetary Pin	5	BC	●				
3	160.195	0631 329 167	Lock Pin 3x26	5		●				
4	160.194	0631 329 051	Lock Pin 5x26	5		●				
5	169.753	0501 306 212	Thrust Washer 29x64x1,5	10	A	●				
5	169.759	0501 308 981	Thrust Washer	10	BC	●				
6	169.410	0730 103 846	Spacer Ring 29x39x1,00	15	A	●				
6	169.744	0730 107 168	Spacer Ring	15	BC	●				
7	171.062	0750 119 116	Needle 10x16,80 (140 pcs)	120	A	●				
7	171.062	0750 119 116	Needle 10x16,80 (140 pcs)	140	BC	●				
8	198.803	1297 232 023	Planetary Gear Set (5 pcs)	1	A	●				
8	198.801	1312 232 014	Planetary Gear Set (5 pcs)	1	BC	●				
9	123.217	1297 332 080	Crown Gear 83 T	1	A	●				
9	123.208	1295 332 086	Crown Gear 86 T	1	BC	●				
10	150.241	1297 332 108	Carrier hub 83 T	1	A	●				
10	150.134	1297 332 120	Carrier Hub 86 T	1	BC	●				
11	111.129	0730 505 055	Locking Wire	1	A	●				
11	111.198	0730 505 056	Locking Wire	1	BC	●				
13	130.311	0635 338 035	Bearing 100x125x13	1		●				
14	198.358	1296 233 006	Synchro Cone	1		●				
15	119.085	1296 333 022	Synchronizer Ring	2	Old Type	●				
15	119.172	1296 333 045	Synchronizer Ring	2	New Type	●				
16	157.183	1297 333 115	Synchronizer Hub	1		●				
17	160.116	1240 304 278	Pressure Piece	9		●				
18	156.036	0732 040 386	Inner Spring De.3x34	9		●				
19	156.037	0732 040 385	Outer Spring De.6x34	9		●				
20	154.098	1296 333 023	Sliding Sleeve	1		●				
21	198.790	1297 233 056	Synchronizer Cone (41 spl.)	1		●				
22	109.215	1312 333 014	Synchronizer Cone (41 Spl.)	1	With Retarder	●				
23	130.245	0750 116 394	Bearing 90x160x30	1		●				
24	128.098	1315 301 220	Cover	1		●				
25	139.878	0750 111 341	Oil Seal 105x130x12	1		●				
26	197.254	1297 333 110	Output Flange D.180 mm	1	D.180-10 H.	●				
27	188.121	1312 332 028	Stop Washer	1		●				
28	141.163	1297 306 120	Slide	2	2x2 pcs.	●				
29		1312 206 025	Fork	1		●				
29		1312 206 026	Fork	1		●				
29		1312 206 045	Fork	1	(10)	●				
30		1312 206 013	Fork	1		●				
30		1312 206 017	Fork	1		●				
30		1312 206 043	Fork	1	(10)	●				

Date

09/2014

Notes

(10) Only pneumatic version

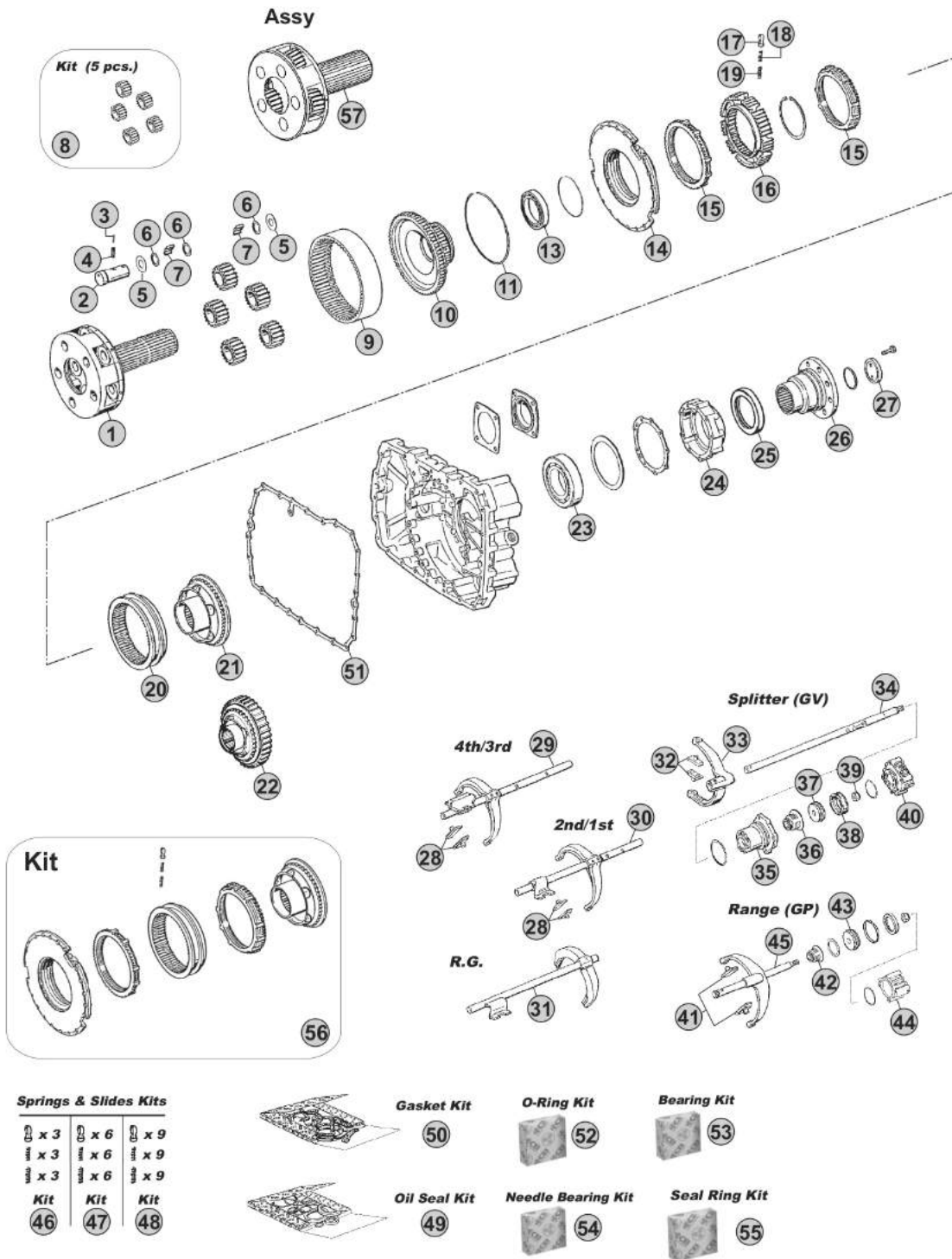
 ECOSPLIT I-II  
16S220

**MODELS:**

- ECOSPLIT I-II

**VERSIONS:**

- 16S220 (1312 xxx xxx)



**Notes**

- (A) R. 10,14-0,72
- (B) R. 13,80-0,84
- (C) R. 16,47-1,00

Our spare parts are not the originals but interchangeable with the originals ones. All original equipment manufacturers' numbers, pictures and models used in this catalogue are for reference only. Our products bear our trade-mark.

Fig.	CEI no.	ZF no.	Description	Q.ty	Notes	16S220				
31		1312 206 027	Fork	1		●				
31		1312 206 028	Fork	1		●				
31		1312 206 033	Complete Fork	1	(10)	●				
32	<b>141.163</b>	1297 306 120	Slide	2		●				
33	<b>141.086</b>	1313 312 002	Shift Yoke	1		●				
34	<b>149.280</b>	1312 312 001	Rod	1		●				
35	<b>132.046</b>	1296 312 042	Cylinder	1		●				
36	<b>139.331</b>	0750 112 034	Cap Collar 25x38x14,2	1		●				
37	<b>188.276</b>	1312 312 003	Piston	1		●				
37	<b>188.277</b>	1312 312 015	Piston	1	(10)	●				
38	<b>139.912</b>	0750 112 089	Ring 53x63x16,2	1		●				
38	<b>111.446</b>	0750 112 048	Ring 53x63x5	1	(10)	●				
39	<b>287.091</b>	0737 300 037	Nut	1		●				
40	<b>132.084</b>	0750 132 032	Cylinder	1		●				
40	<b>280.350</b>	0750 132 033	Cylinder	1		●				
41	<b>141.085</b>	1296 334 004	Bronze Slide	2		●				
42	<b>139.331</b>	0750 112 034	Cap Collar 25x38x14,2	1		●				
43	<b>189.422</b>	1296 334 039	Piston	1	(1)	●				
43	<b>188.278</b>	1297 334 056	Piston	1	(2-10)	●				
44	<b>132.047</b>	1295 334 075	Cylinder	1	(1)	●				
44	<b>132.036</b>	1297 334 055	Cylinder	1	(2-10)	●				
45	<b>149.171</b>	1312 234 002	Fork	1		●				
45		1312 234 004	Fork	1	(10)	●				
46	<b>198.339</b>	1268 298 938	Spring Slide kit	1		●				
47	<b>198.564</b>		Spring Slide kit	1		●				
48	<b>198.842</b>	1295 298 933	Spring Slide kit	1		●				
49	<b>298.881</b>	1312 298 902	Oil Seal Kit	1		●				
50	<b>198.427</b>	1295 298 915	Gasket Kit	1		●				
51	<b>139.685</b>	1313 301 037	Gasket	1		●				
52	<b>298.405</b>	1295 298 916	O-Ring Kit	1		●				
53	<b>298.426</b>	1295 298 943	Bearing kit	1		●				
54	<b>298.425</b>	1295 298 947	Needle Cages Kit	1		●				
55	<b>298.427</b>	1312 298 901	Seal Ring Kit	1		●				
56	<b>298.113</b>		Repair kit	1	W/"New Type" synchro rings	●				
57	<b>298.887</b>		Planetary Carrier	1		●				

ECOSPLIT II  
16S220**Date**

09/2014

**Notes**

(10) Only pneumatic version  
 (1) To be coupled together  
 (2) To be coupled together