

3M Science.
Applied to Life.™

Zirconia Crown Cementation



Made Easy with
3M™ RelyX™ U200
Self-Adhesive Resin Cement

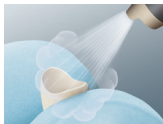


**Prepare
restoration.**



Step 1

Sandblast surfaces to be cemented with 30 or 50 micron aluminum oxide at a pressure of 2 Bar (30 psi) to create a matte surface appearance.



Step 2

Clean with alcohol and air dry with oil-free air.



Tip:

If sandblasting is done in laboratory before try-in, clean saliva contamination with NaOCl (ca. 5%) and rinse with water. Do not use phosphoric acid for cleaning.



**Pretreat
tooth.**



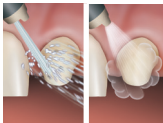
Step 3

Remove provisional restoration. Mechanically clean prepared tooth (e.g. with pumice paste).



Tip:

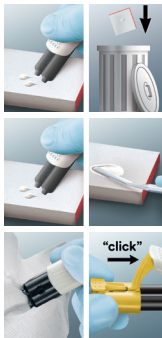
Make sure any residue (temporary cement, desensitizers, astringents, disinfectants, etc.) is completely removed. Do not use H_2O_2 , EDTA or $NaHCO_3$.



Step 4

Rinse and lightly dry. Leave tooth surface moist. Do not over dry the tooth. Over drying can lead to post operative sensitivity.

**Apply
cement
and seat.**



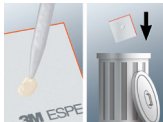
Step 5

For Clicker Delivery:

- Dispense a small amount of cement to ensure even dispensing
- Discard this material
- Apply two clicks of the cement pastes onto a mixpad
- Hand mix with a spatula until a homogeneous mix is obtained
- Wipe the Clicker barrels independently to avoid contamination of the material and premature setting
- Ensure that the cap is put firmly in place (clicking sound)



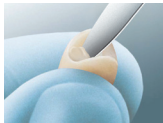
Tip: For a crown, typically two clicks would be needed.



Step 5

For Automix Delivery:

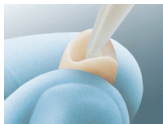
Dispense a small amount of cement onto the mixpad to ensure a perfect mix. Discard this material.



Step 6

For Clicker Delivery:

Use the mixing spatula to apply the cement into the crown.



For Automix Delivery:

Dispense cement directly into the crown.



Step 7

Firmly seat the crown with finger pressure.

Clean up.



Step 8

Tack cure for 1–2 seconds per surface.



Step 9

Remove excess cement with a scaler while holding the crown in place.



Tip:

Do not exceed recommended tack cure time, otherwise clean up will be difficult. For a controlled curing time, use 3M™ Elipar™ S10 LED Curing Light or 3M™ Elipar™ DeepCure-S LED Curing Light tack curing function.



Final cure.



Step 10

Light cure for 20 seconds per surface or wait 6 minutes from start of mix for dark cure. Finish and polish as needed.



Finished crown.

For further reference, please refer to Instructions for Use, Step-by-Step Card and Frequently Asked Questions.



3M Oral Care
2510 Conway Avenue
St. Paul, MN 55144-1000 USA

Phone 1-800-634-2249
3M.com/DentalCements

3M, Clicker, Elipar, ESPE, and RelyX are trademarks of 3M or 3M Deutschland GmbH. Used under license in Canada. © 3M 2018. All rights reserved.
70-2013-0785-0 (REV 7/2018)

3M Science.
Applied to Life.™

Glass Ceramic Crown Cementation



Made easy with
3M™ RelyX™ Ultimate
Adhesive Resin Cement

The background consists of several overlapping, semi-transparent green triangles of various shades, creating a dynamic, abstract geometric pattern. The colors range from a bright lime green to a darker forest green.

**Prepare
restoration.**



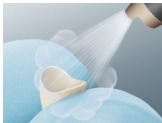
Step 1

Etch with hydrofluoric acid after try-in.



Step 2

Rinse with water.



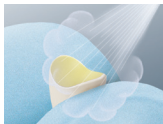
Step 3

Air dry with oil-free air.



Step 4

Apply 3M™ Single Bond Universal Adhesive to the bonding surface and rub it in for 20 seconds.



Step 5

Air thin with oil-free air for 5 seconds until the solvent is evaporated and no more ripples are observed.



Tip:

Cover-up prepared crown with an orange colored daylight screen until it is inserted (to avoid unintentional light curing taking place).

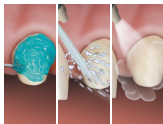
The background consists of several overlapping, semi-transparent green triangles of various shades, creating a complex, abstract geometric pattern. The colors range from a bright lime green to a darker forest green.

**Pretreat
tooth.**



Step 6:

Remove provisional restoration. Mechanically clean prepared tooth (e.g. with pumice paste).



Step 7 (Optional):

(Selective) Etch with phosphoric etching gel, rinse with water and lightly air dry with oil-free air.



Tip:

Make sure any residue (temporary cement, desensitizers, astringents, disinfectants, etc.) is completely removed. Do not use H_2O_2 , EDTA or Na_2CO_3 .



Step 8

Apply 3M™ Single Bond Universal Adhesive to the bonding surface and rub it in for 20 seconds.



Step 9

Air thin with oil-free air for 5 seconds until the solvent is evaporated and no more ripples are observed. Avoid pooling.

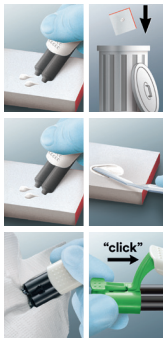


Step 10 (Optional)

Light cure Single Bond Universal Adhesive for 10 seconds.

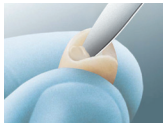
The background consists of several overlapping, semi-transparent green triangles of various shades, creating a dynamic, abstract geometric pattern. The colors range from a light lime green to a darker forest green.

**Apply
cement
and seat.**



Step 11

- Dispense a small amount of cement to ensure even dispensing
- Discard this material
- Apply two clicks of the cement pastes onto a mixpad and hand mix with a spatula until a homogeneous mix is obtained. **NOTE: two to four clicks are needed for a crown depending on tooth size.**
- Wipe the Clicker barrels independently to avoid contamination of the material and premature setting
- Ensure that the cap is put firmly in place (clicking sound)



Step 12

Use the mixing spatula to apply the cement into the crown.



Step 13

Firmly seat the crown with finger pressure.

The background consists of several overlapping, semi-transparent green triangles of various shades, creating a complex, abstract geometric pattern. The colors range from a light lime green to a darker forest green.

Clean up.



Step 14

Tack cure for 1–2 seconds per surface from a distance.



Tip:

Do not exceed recommended tack cure time, otherwise clean up will be difficult. For a controlled curing time, use 3M™ Elipar™ S10 LED Curing Light or 3M™ Elipar™ DeepCure-S LED Curing Light tack curing function.

Alternatively, remove excess in soft stage and apply glycerin gel before final cure to avoid oxygen inhibition layer.



Step 15

Remove excess cement with a scaler while holding the crown in place.



Step 16

Light cure for 20 seconds per surface or wait 6 minutes from start of mix for dark cure. Finish and polish as needed.



Finished crown.

For further reference, please refer to Instructions for Use, Step-by-Step Card and Frequently Asked Questions.